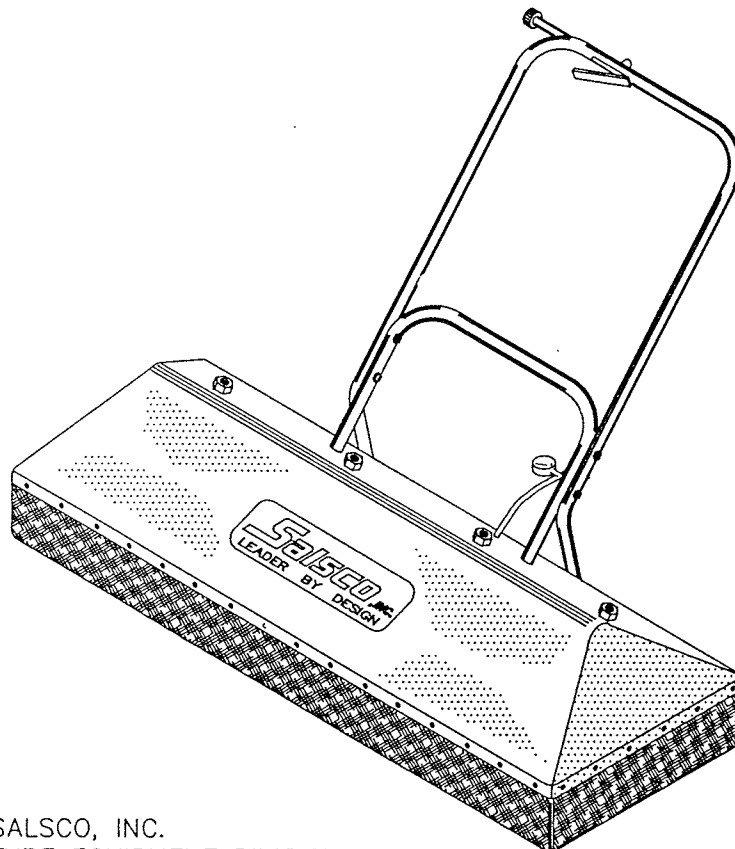


Salsco, INC.

LEADER BY DESIGN

WINDSHIELD. TM

OWNER'S MANUAL
PARTS MANUAL
SERVICE MANUAL



SALSCO, INC.
TURF EQUIPMENT DIVISION
105 SCHOOL HOUSE ROAD
CHESHIRE, CONN. 06410 USA

* NOTE: PLEASE READ "CAUTIONS" IN THIS MANUAL

STATEMENT OF FACT

YOU HAVE JUST PURCHASED THE HIGHEST QUALITY, MOST IDEAL SPRAYING MACHINE ON THE MARKET TODAY. THIS UNIT HAS THE ABILITY TO MEET EXACT STANDARDS AND PERFORM FOR YEARS WITH MINIMUM DOWN TIME. HOWEVER, IT CANNOT READ NOR WILL IT UNDERSTAND THIS MANUAL NO MATTER HOW LONG YOU LEAVE IT ON TOP OF THE MACHINE. IT IS YOUR RESPONSIBILITY TO READ AND UNDERSTAND IT. IT IS ALSO YOUR RESPONSIBILITY TO BE CERTAIN THIS INFORMATION IS PASSED ALONG TO ANYONE WHO IS EXPECTED TO OPERATE THIS EQUIPMENT. SHOULD YOU CHOOSE NOT TO READ, UNDERSTAND AND PASS ALONG THE INFORMATION PROVIDED YOU, PLEASE EXPECT EQUIPMENT FAILURE AND POSSIBLE INJURIES TO PERSONS AROUND THIS EQUIPMENT.

FOR THE SAFETY OF THE OPERATOR, IT IS IMPERATIVE THAT THIS MANUAL IS CAREFULLY READ AND UNDERSTOOD.

HAVING READ THIS MANUAL, IT IS YOUR RESPONSIBILITY TO BE SURE THAT ALL NEW OPERATORS READ AND UNDERSTAND THIS MANUAL ESPECIALLY THE CAUTIONS ON PAGE 6.

AS A MANUFACTURER OF EQUIPMENT WE HAVE A RESPONSIBILITY TO DESIGN A SAFE PIECE OF EQUIPMENT. HOWEVER, ONLY YOU CAN PREVENT ACCIDENTS!!

READ AND UNDERSTAND MANUAL BEFORE OPERATING

DESCRIPTION

With the WINDSHIELDtm Sprayer you can schedule spray jobs regardless of the wind. By effectively controlling drift, this environmentally sound product will avoid damaging nearby plantings, reduce operator exposure, and keep neighbors happy. The all-aluminum frame and fiberglass hood result in a tough unit that weighs only 27 lbs. Drift is controlled by housing the four spray nozzles inside the hood, and surrounding the hood with a rugged nylon curtain. WINDSHIELD...the sprayer that lets you spray where you want, when you want.

READ AND UNDERSTAND MANUAL BEFORE OPERATING

MANUFACTURED BY:

SALSCO, INC.
TURF DIVISION
105 SCHOOL HOUSE ROAD
CHESHIRE, CT 06410
(203) 271-1682
FAX: (203) 271-2596

THIS MANUAL COVERS MODEL: _____

This company reserves the right to discontinue, add improvements to, or change the design of any model or product at any time without obligation to improve existing machines, either by changing the design or adding new parts.

It has been and will continue to be the policy of SALSCO to update existing machines at its own discretion. Whenever possible, new designs will be made in such a way, that they can be "Retro Fit" if so desired.

Record in the space provided below the model and serial number of this unit. Please retain these numbers for future reference.

No parts orders will be accepted without model numbers or part numbers. All part numbers are listed in this manual.

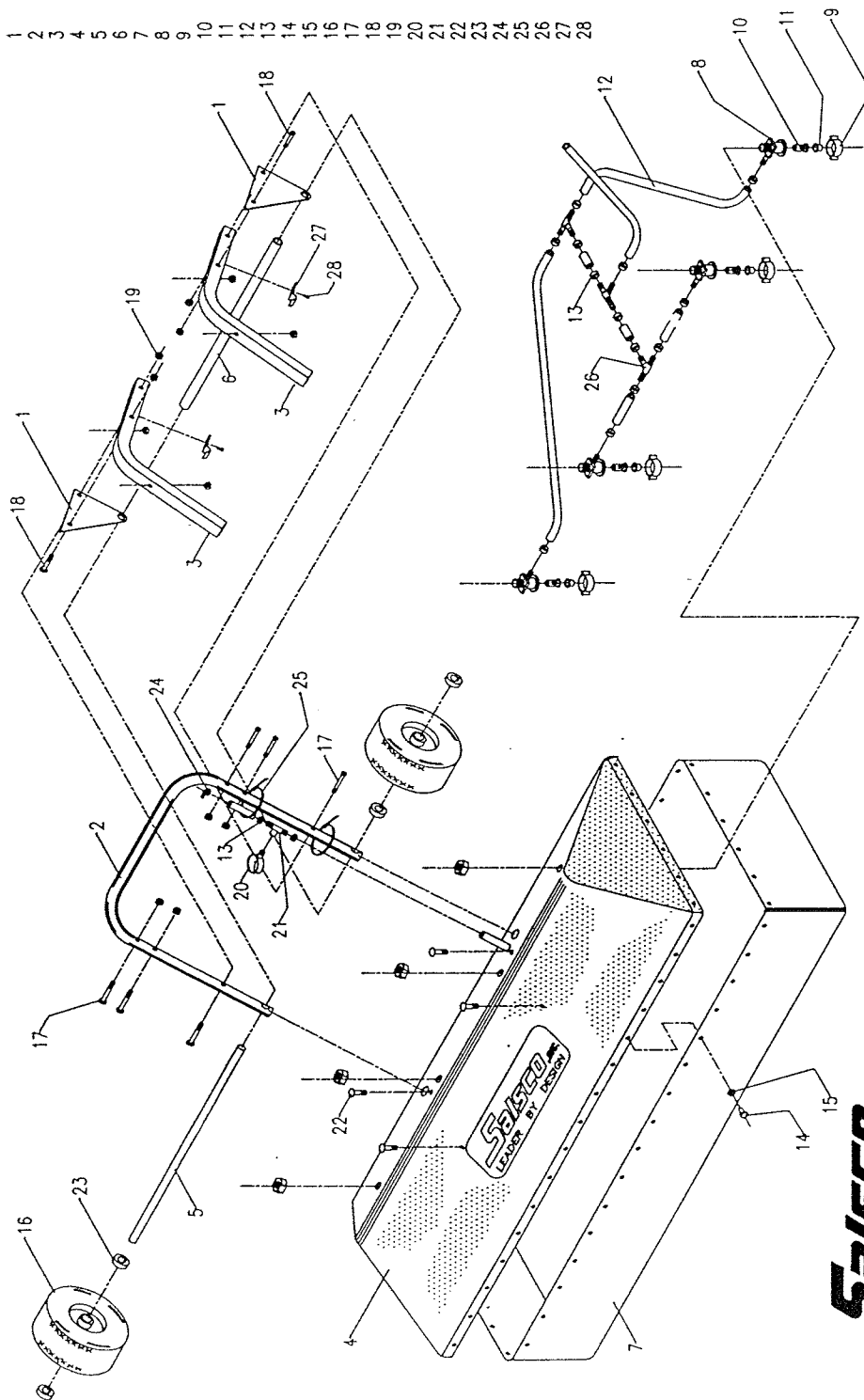
SERIAL NUMBER

MODEL NUMBER & NAME

NOTE: Be sure to complete your warranty card. This will insure immediate processing of any warranty claims.

READ AND UNDERSTAND MANUAL BEFORE OPERATING

ITEM	PART NO	DESCRIPTION	QTY
1	0541061	WHEEL PLATE	2
2	0423009	LOWER HANDLE BAR	1
3	0419007	SHROUD BRACE TUBE	1
4	0528005	SHROUD	2
5	0402002	AXLE	1
6	0455052	TUBE SPACER	1
7	0436023	POLYVINYL CURTAIN	1
8	0317019	NOZZLE MOUNT BODY	4
9	0317020	NOZZLE CAP	4
10	0317021	FLANGED STRAINER	4
11	0317022	NOZZLE TIP	4
12	0327005	3/8 NYLON TUBE	72"
13	0310003	3/8 CLAMP RING	15
14	0344001	POP RIVET	42
15	0344002	RIVET BACKUP	42
16	0354007	WHEEL & RIM	2
17	0346110	HEX SCREW	6
18	0346107	HEX SCREW	2
19	0338101	LOCK NUT	12
20	0317023	PRESSURE GAUGE	1
21	0317024	T-CONNECTOR	1
22	0346132	CARRIAGE BOLT	4
23	0311004	SET COLLAR	4
24	0310004	HOSE CLAMP	1
25	0315021	WIRE TIE	2
26	0317025	3/8 RIBBED TEE	3
27	0310005	TUBING CLAMP	2
28	0346803	SELF TAP SCREW	2



Salsco, INC.
LEADER BY DESIGN

105 SCHOOL HOUSE ROAD
CHESHIRE, CONNECTICUT 06410
PHONE 203-271-1682
FAX 203-271-2596
1-800-8-SALSCO

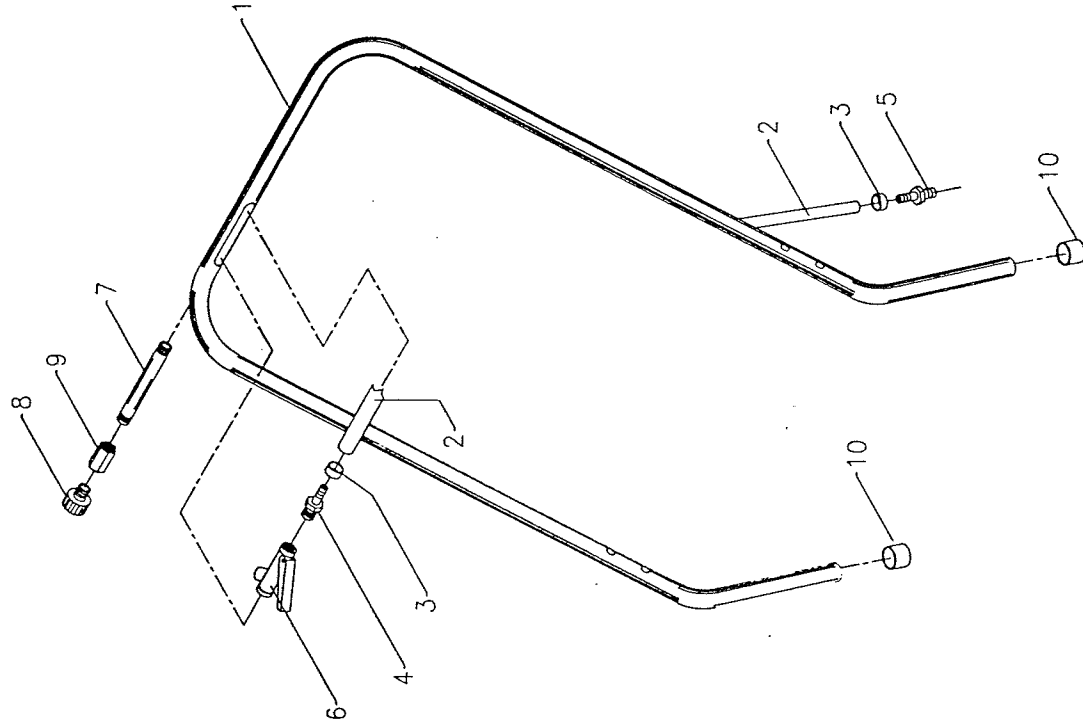
ASSEMBLY NO. 0007001

SUBASSEMBLY NO. 0128004

DWG NAME SHROUD & WHEEL ASSEMBLY

CATALOG DWG NO. 0728004

ITEM	PART NO	DESCRIPTION	QTY
1	0423008	HANDLE BARS	1
2	0327004	NYLON TUBE	1
3	0310002	CLAMP RING	2
4	3017012	TUBE ADAPTER	1
5	0317013	TUBE ADAPTER	1
6	0417015	TRIGGER VALVE	1
7	0317016	PIPE NIPPLE	1
8	0317017	HOSE ADAPTER	1
9	0317018	COUPLING NUT	1
10	0336024	CRUTCH TIP	2



Salsco, Inc.
LEADER BY DESIGN

105 SCHOOL HOUSE ROAD
CHESHIRE, CONNECTICUT 06410
PHONE 203-271-1682
FAX 203-271-2596
1-800-8-SALSCO

WARRANTY POLICY

Your Salsco Commercial or Turf Equipment product is a commercial type product and is normally manufactured and sold for commercial or industrial use. Salsco will, for the original purchaser, for two (2) years from the date of purchase (90 days if used for rental purposes) repair, replace, free of charge, any part or parts found to be defective in material, workmanship or both. Any transportation charges to be borne by the purchaser.

If, during the Warranty Period, the product does not function properly due to defect, simply contact Salsco and follow the warranty procedures on page 10.

SALSCO, INC.
105 School House Road
Cheshire, CT 06410
(203) 271-1682
Fax: (203) 271-2596
1-800-8SALSCO

This warranty does not include incidental or consequential damages and is exclusive of any implied warranties.

This warranty does not include normal maintenance parts, including, but not limited to tires, curtains, etc.

This warranty does not include parts or components which are covered under the original manufacturers warranty, including, but not limited to tires.

READ AND UNDERSTAND MANUAL BEFORE OPERATING

WARRANTY CLAIM

SALSCO, INC. - 105 SCHOOL HOUSE ROAD, CHESHIRE, CT 06410
PHONE: (203) 271-1682 FAX: (203) 271-2596

END-OWNER: _____ PHONE# ()

ADDRESS: 11

PURCHASED FROM: _____ PHONE# () _____

ADDRESS

DATE FAILED:	DATE PURCHASED:	INVOICE #

SERIAL #	MODEL#	HOURS USED:
----------	--------	-------------

PROBABLE CAUSE OF FAILURE OR PROBLEM:(word defective not sufficient)

WORK PERFORMED/COMMENTS ON REPAIR:

PART #	DESCRIPTION	QTY	PRICE EACH	LABOR
--------	-------------	-----	------------	-------

PREVENTIVE MAINTENANCE SUGGESTED AND BY WHOM:

OFFICE USE ONLY

DT APPRVD: DT RJCTD: ENTRD A/R: ENTRD DB:

DEALER D/R: _____ WARRANTY CARD: _____

PART(S) TOTAL: LABOR TOTAL: TOTAL:

APPROVED/REJECTED BY: _____

NAME	TITLE
------	-------

REASON FOR REJECTION: