



MADE IN THE U.S.A

PARTS MANUAL
MODEL 09091/09092 - TRANZ-FORMER ROLLER



Greens - Approaches - Fairways - Sportsfields



Rotary Brush System

MANUFACTURER OF OUTDOOR POWER EQUIPMENT

Products for Turf & Lawncare, Rental, Construction, Tree care, Wood Processing, Nursery & Farm Industries

Other Salsco Equipment

3-1/2" - 18", Gas, Diesel, and P.T.O, Wood/Brush Chippers
Chipper Shredder Vacuums - Tailgate & Truckloader Vacuums
Gas and Electric Greens Rollers

***Quality of Workmanship, Innovative
Design, Built to Last!***

105 School House Road
Cheshire, CT 06410 U.S.A.
800-872-5726, 203-271-1682, 203-271-2596 (Fax)
sales@salsco.com, www.salsco.com

TABLE OF CONTENTS

MODEL 09092 DESCRIPTION

COVER & TABLE OF CONTENTS.....	Pages 1 – 2
STATEMENT OF FACT	Page 3
MACHINE REGISTRATION	Page 4
PARTS DIAGRAMS	Pages 5-34
TORQUE CHARTS	Pages 35
WARRANTY POLICY & PROCEDURE	Page 36
COPY OF WARRANTY CLAIM FORM.....	Page 37-38
DELIVERY REPORT/WARRANTY CARD.....	Page 39
SERVICE RECORD.....	Page 40

NOTE: PLEASE SEE THE CD ENCLOSED IN THE MANUAL PACKAGE FOR THE DIAGRAM OF THE WIRING HARNESS.

SALSCO, INC.

105 School House Road
Cheshire, CT 06410 USA
800-872-5726, 203-271-1682
203-271-2596 (Fax)
www.salsco.com, sales@salsco.com

STATEMENT OF FACT

You have just purchased the highest quality, most dependable, roller on the market today. This unit has the ability to meet exact standards and perform for years with minimum downtime. **HOWEVER**, it cannot read nor will it understand this manual no matter how long you leave it on top of the machine.

It is your responsibility to read and understand this manual; it is also your responsibility to be certain this information is passed along to anyone who is expected to operate this equipment. Should you choose not to read, understand and pass along the information provided you, please expect equipment failure and possible injuries to persons around this equipment.

For the safety of the operator, it is imperative that this manual is carefully read and understood.

Once you have read this manual, it is your responsibility to be sure that all new operators read and understand this manual, especially all cautions stated.

As a manufacturer of equipment, we have a responsibility to design a safe piece of equipment. NOTE: The important safeguards and instructions in this manual are not meant to cover all possible conditions and situations that may occur. It must be understood that common sense, caution, and care are factors, which cannot be built into any product. These factors must be supplied by the person(s) caring for and operating this equipment.

ONLY YOU CAN PREVENT ACCIDENTS!

MACHINE REGISTRATION

MANUFACTURED BY:

SALSCO, INC.
105 School House Rd., Cheshire, CT 06410
800-872-5726, 203-271-1682, 203-271-2596 (Fax)
sales@salsco.com www.salsco.com

THIS MANUAL COVERS MODEL (s): 09092-TRANZ-FORMER ROLLER

This company reserves the right to discontinue, add improvements to, or change the design of any model or product at any time without obligation to improve existing machines, either by changing the design or adding new parts.

It has been and will continue to be the policy of SALSCO to update existing machines at its own discretion. Whenever possible, new designs will be made in such a way that they can be "Retro Fit" if so desired.

Record in the space provided below the model and serial number of this unit. Please retain these numbers for future reference.

NO PARTS ORDERS will be accepted **WITHOUT MODEL NUMBERS OR PART NUMBERS.** Please call our parts department should you have any questions.

Serial Number

Model Number

NOTE: Be sure to complete your warranty card. This will insure immediate processing of any warranty claims.

READ AND UNDERSTAND THIS MANUAL BEFORE STARTING THE MACHINE

1/06

Salsco Tranz-Former Roller Operator Instructions

The Salsco Fairway Roller will be sent via common carrier. It could arrive in a box truck or an open flatbed. Use caution when preparing to take the roller off of the trailer. Make sure the trailer is level. If you do not have a dock, arrange to have a flatbed truck to back up to the trailer. (Do Not Use Ramps!)

First, you want to make sure the roller has gas and oil. The oil filter is accessible from the engine opening on the left side of the roller. The Gas tanks are on top behind the driver's seat.

Second, make sure the wheels are down and the rolls are not touching the floor.

Third, become familiar with the roller controls.

Engine Controls:

1. The master battery shut off switch located on the top right hand side of the instrument panel, (Item 1) should be in the off position when not in use.
2. The transport/roll switch (Item 2) is used to change from power to the wheels or power to the rolls. This switch should be in the Roll position when the unit is not in use.
3. Throttle, (Item 3) NOTE: run at full throttle.
4. Choke (Item 4)
5. Engine key start (Item 5)

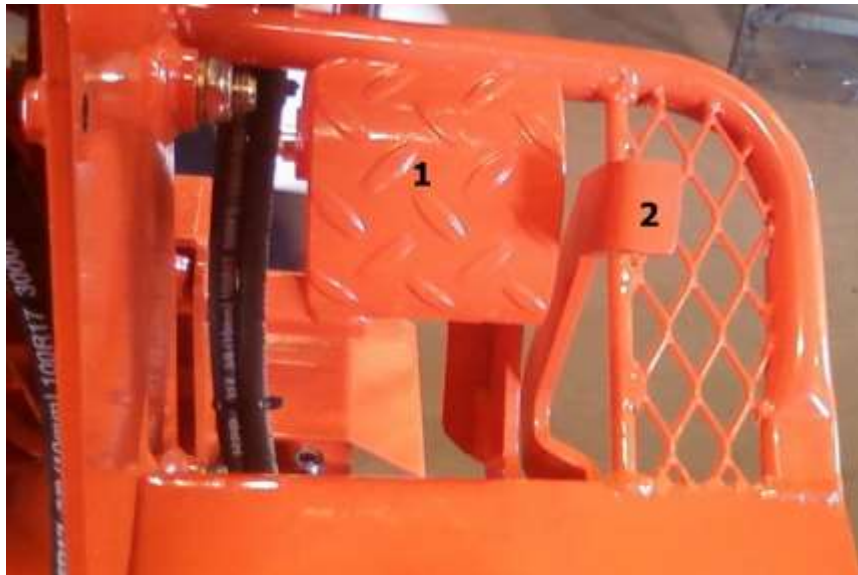


Other controls:

1. Accessory Outlet (Item 6)
2. Light Switch (Item 7) (4 LED lights for early morning rolling)
3. Fan Switch for additional cooling in the engine compartment (Item 8)
4. Hour Meter (Item 9)
5. Cruise Control Lever (Item 10) to activate or de-activate the cruise control.

Pedals:

1. Accelerator Pedal – Forward/Reverse.
2. Cruise Control deactivation pedal.



Before driving the unit off of the trailer disconnect any retainer devices securing the roller to the trailer.

When you are ready to transport: Put the wheels down, bring rolls in, move switch to transport and press the accelerator pedal.

When you are ready to start rolling: Move the rolls out; raise the wheels to the up position, then move the switch to the roll position. You are now ready to roll.

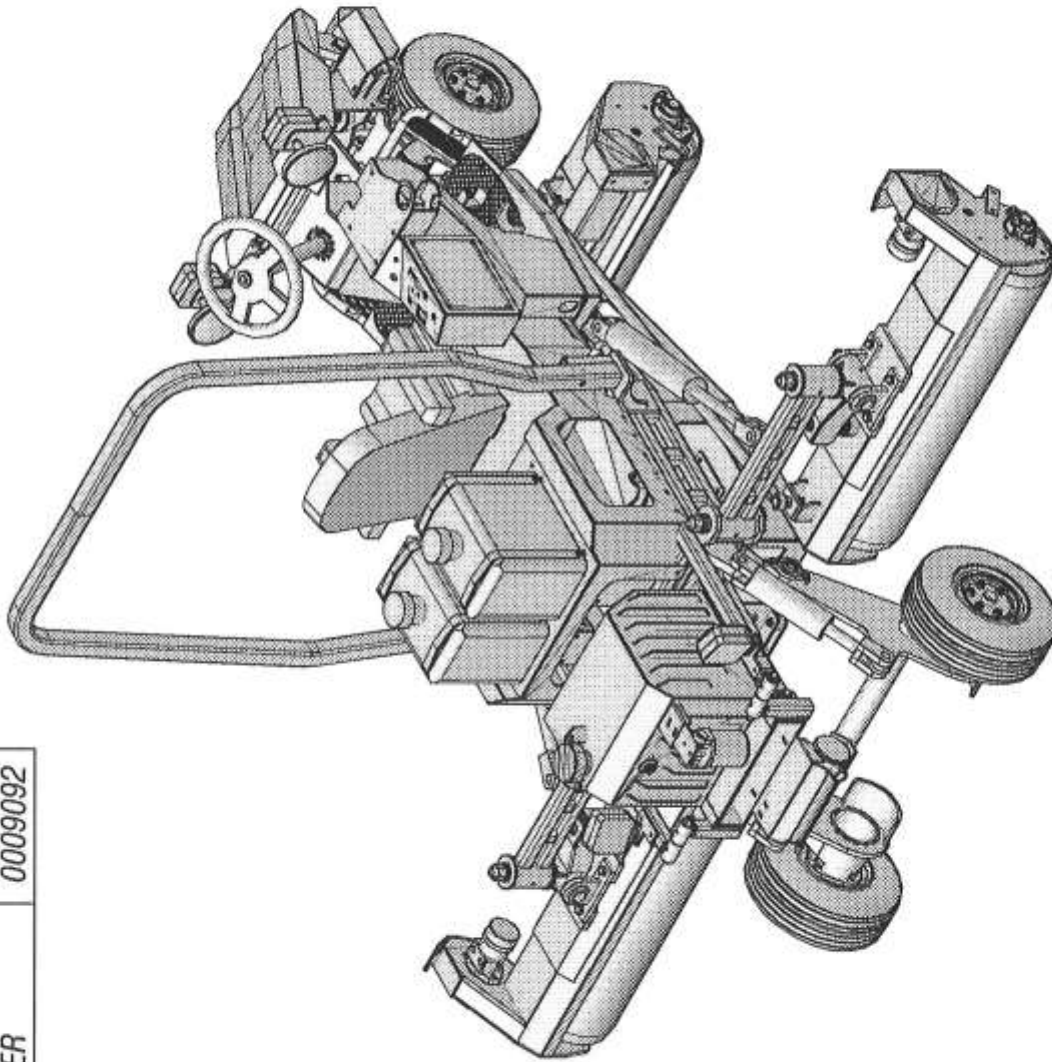
Cruise control operation: To activate, press the speed control pedal to bring the unit to the desired speed then move the lever to the on position the pedal will lock.

To cancel cruise control: Either move the cruise control handle to the off position and tap the speed control pedal Item # 1, or tap Item # 2. Now you will be able to operate the speed pedal and cruise will be off.

If for any reason the cruise doesn't release, press the pedal to the right of the speed control and the lock pin will release

SEE SALSCO FAIRWAY ROLLER INSTRUCTION DVD VIDEO INCLUDED IN THE MANUAL PACKAGE FOR MORE DETAILS

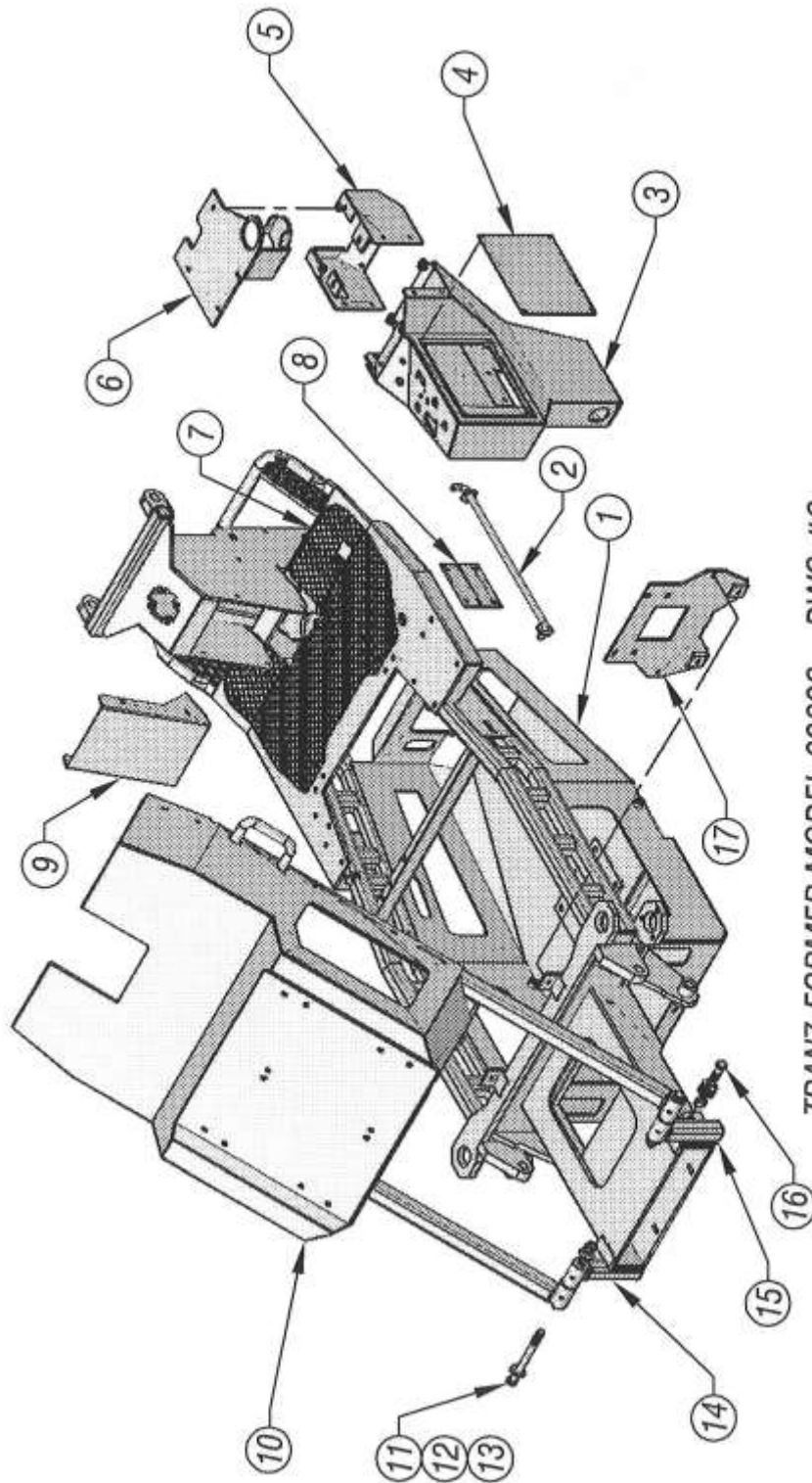
ITEM	DESCRIPTION	PART No
1	TRANZ-FORMER	0009092



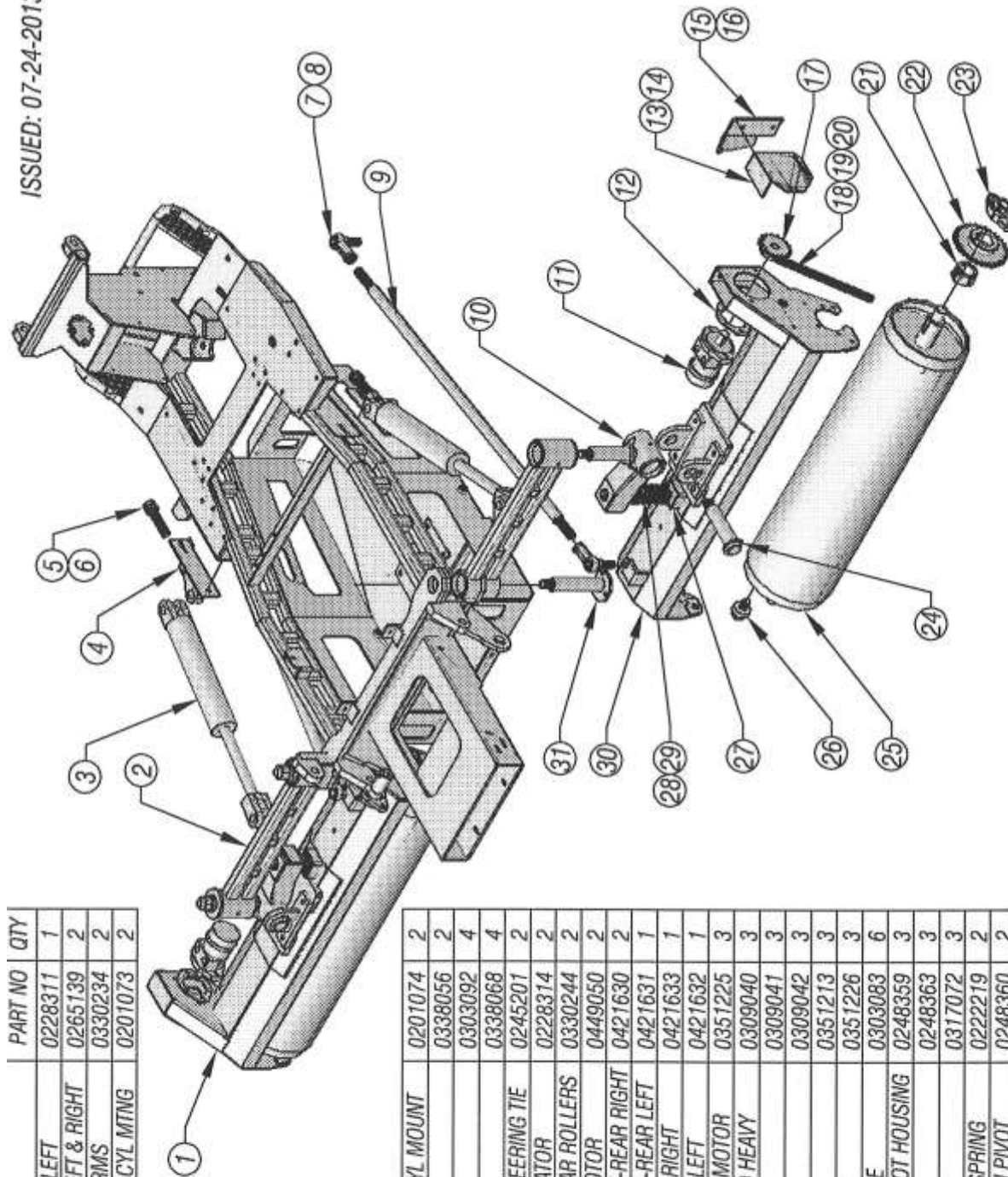
TRANZ-FORMER MODEL 09092 - DWG # 1

ITEM	DESCRIPTION	PART NO	QTY	ITEM	DESCRIPTION	PART NO	QTY
1	FRAME, FAIRWAY ROLLER	0219524	1	10	HOUSING, ENGINE HOOD	0228317	1
2	ROD, ENGINE HOOD PROP	0245198	1	11	BOLT, HEX HEAD	0346456	2
3	HOUSING, OPERATOR CONTROL ENCLOSURE	0228318	1	12	WASHER, FLAT	0353104	20
4	DOOR, OPERATOR CONTROL ENCLOSURE	0460105	1	13	HEX LOCK NUT	0338104	6
5	DOOR, HYDRAULIC VALVE ACCESS	0260106	1	14	MOUNT LEFT ENGINE HOOD PIVOT HINGE	0276825	1
6	PLATE, HYDRAULIC VALVE COVER	0290203	1	15	MOUNT RIGHT ENGINE HOOD PIVOT HINGE	0276826	1
7	PLATE, FAIRWAY ROLLER DECK STEP	0490223	1	16	BOLT, HEX HEAD	0346405	4
8	PLATE, HYDRAULIC VALVE MOUNTING	0490222	1	17	BRACKET, HYD MANIFOLD MOUNTING	0290278	1
9	COVER, STEERING MOTOR MOUNT	0471444	1				

ISSUED: 07-24-2013



TRANZ-FORMER MODEL 09092 - DWG #2



TRANZ-FORMER MODEL 09092 - DWG #3

ITEM	DESCRIPTION	PART NO	QTY
1	HOUSING, ROLL - REAR LEFT	0228311	1
2	ARM, ROLL HOUSING-LEFT & RIGHT	0265139	2
3	HYD CYLINDER - SIDE ARMS	0330234	2
4	ADJUSTER, SIDE ARMS CYL MTING	0201073	2

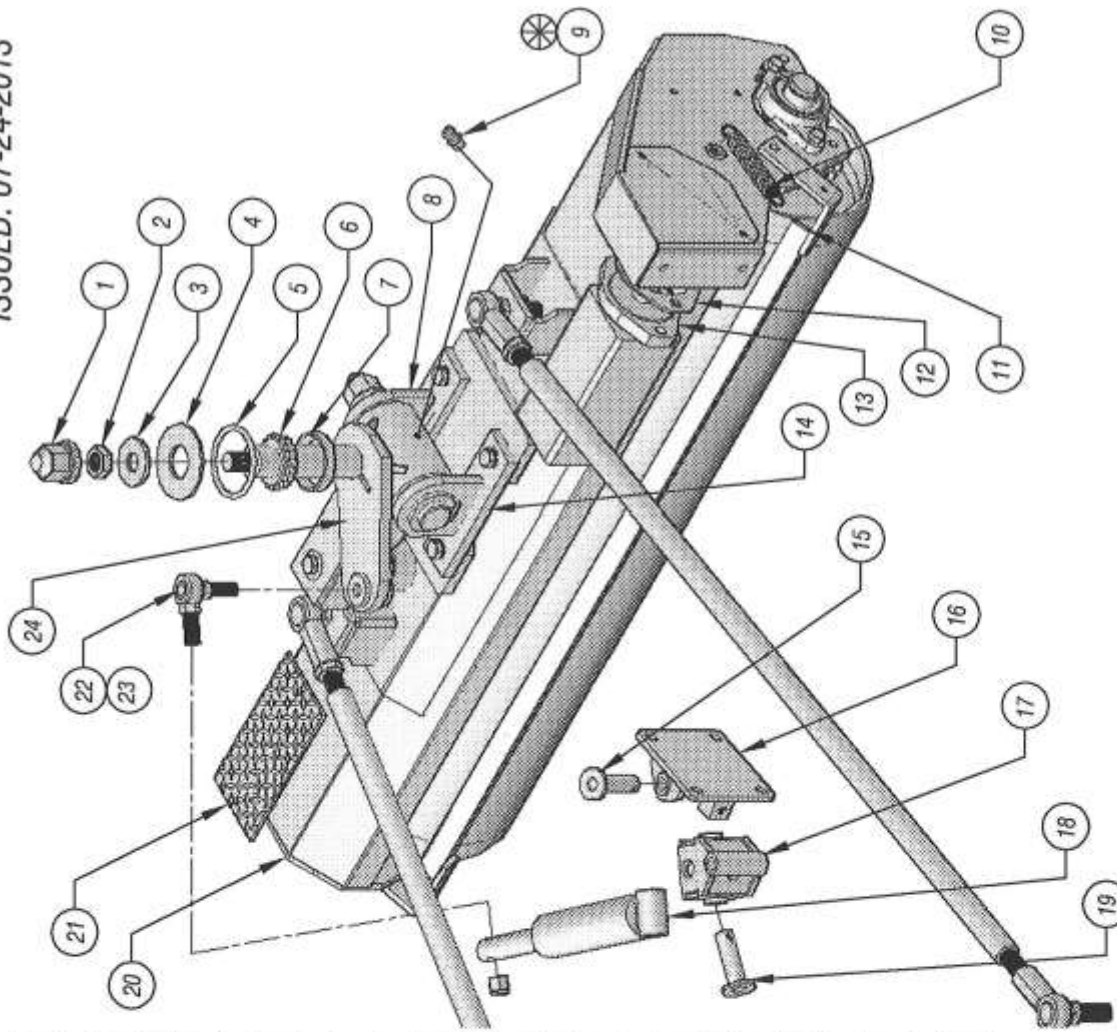
5	ADJUSTER, SIDE ARM CYL MOUNT	0201074	2
6	JAM NUT	0338056	2
7	BALL JOINT ROD END	0303092	4
8	NUT, HEX JAM	0338068	4
9	ROD, ROLL HOUSING STEERING TIE	0245201	2
10	HOUSING, ROLL OSCILLATOR	0228314	2
11	MOTOR, HYDRAULIC-REAR ROLLERS	0330244	2
12	SPACER, HYDRAULIC MOTOR	0449050	2
13	GUARD, ROLL DR. CHAIN-REAR RIGHT	0421630	2
14	GUARD, ROLL DR. CHAIN-REAR LEFT	0421631	1
15	GUARD, REAR ROLLER - RIGHT	0421633	1
16	GUARD, REAR ROLLER - LEFT	0421632	1
17	SPROCKET, ROLL DRIVE MOTOR	0351225	3
18	CHAIN, ROLL DRIVE #60 HEAVY	0309040	3
19	MASTER LINK #60H	0309041	3
20	HALF LINK	0309042	3
21	BUSHING, TAPER LOCK	0351213	3
22	SPROCKET, ROLL SHAFT	0351226	3
23	BEARING, 2 BOLT FLANGE	0303083	6
24	SHAFT, OSCILLATOR PIVOT HOUSING	0248359	3
25	SHAFT / ROLLER	0248363	3
26	PLUG, 3/4 NPT	0317072	3
27	GUIDE, ROLL HOUSING SPRING	0222219	2
28	SHAFT, ARM TRANSITION PIVOT	0248360	2
29	SPRING, COMPRESSION	0350050	2
30	HOUSING, ROLL - REAR RIGHT	0228312	1
31	SHAFT, ARM TRANSITION PIVOT	0248360	2

ISSUED: 07-24-2013

ITEM	DESCRIPTION	PART NO	QTY
1	CAP, LUG NUT	0338405	3
2	JAM NUT	0338060	3
3	FLAT WASHER	0353106	3
4	WASHER	0453117	3
5	O-RING, 3" ID	0343003	6
6	CONE BEARING	0303015	6
7	BEARING CUP	0303016	6
8	OSCIL., PIVOT HSG - FRONT	0276821	3
9	GREASE FITTING	0317001	14
10	SPRING, EXT. - SCRAPER	0350033	6
11	SCRAPER, ROLL	0205168	3
12	SPACER, HYD. MOTOR	0449050	1
13	MOTOR, HYD. (FRONT ROLL)	0330238	1
14	OSCIL., PIVOT HSG - REAR	0276822	3
15	PIN, STEERING CYL MOUNT	0240190	1
16	MOUNT, STEERING CYLINDER	0276835	1
17	MOUNT, ROLL STEERG CYL. PIVOT	0276836	1
18	HYD. CYLINDER	0330176	1
19	PIN, STEERING CYL PIVOT	0240189	1
20	HOUSING, ROLL - FRONT	0228313	1
21	PLATE, DIAMOND - ROLL HSG	0441434	1
22	BALL JOINT ROD END LINKAGE	0303095	1
23	LOCKNUT, NYLON INSERT	0338110	2
24	HSG-ROLL OSCIL CYL MOUNT'G	0228315	1

NOTE:

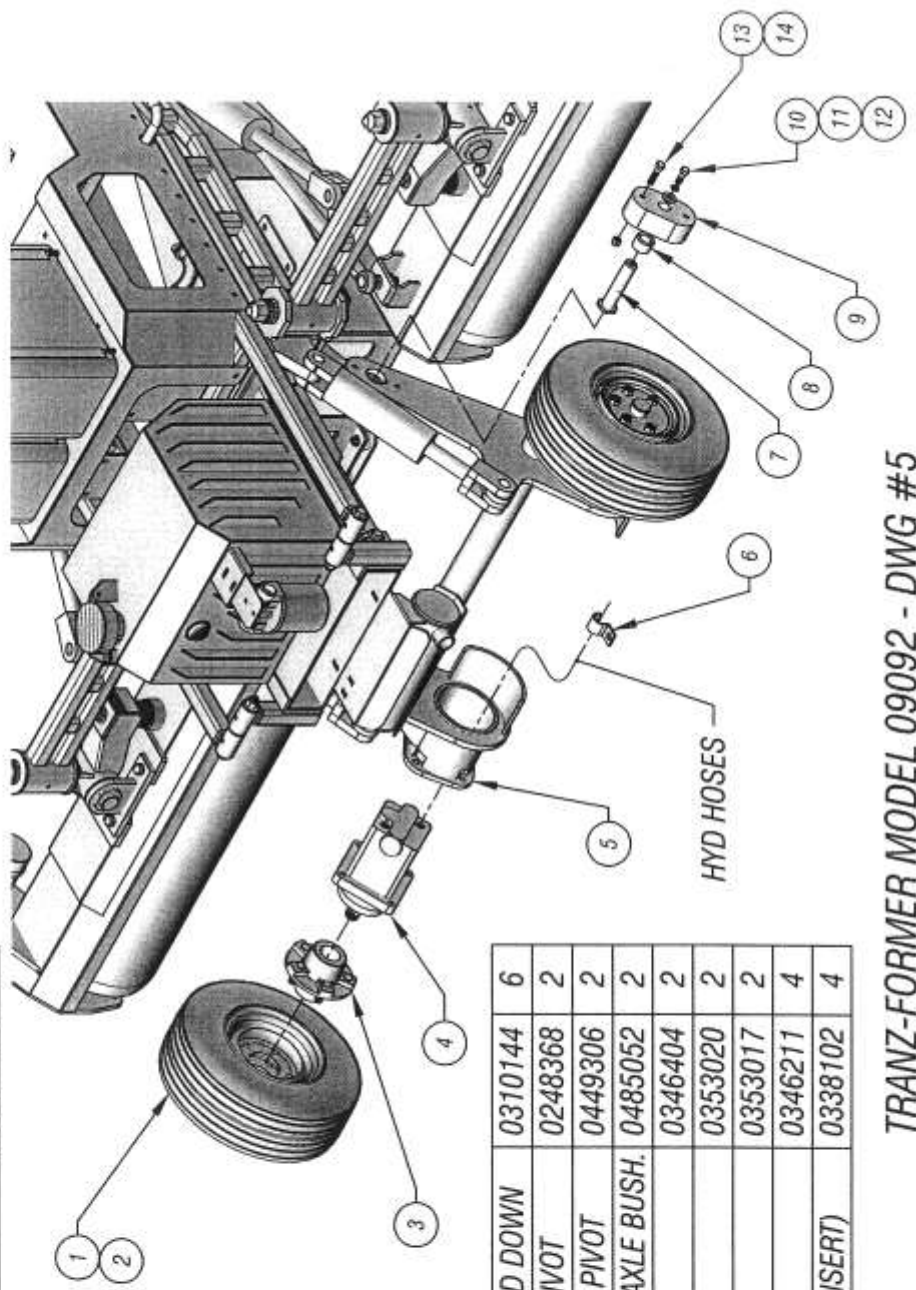
⊗ ALL GREASE POINTS ON THIS ROLLER
ARE IDENTIFIED



TRANZ-FORMER MODEL 09092 - DWG #4

~~ISSUED: 07-24-2013~~
ISSUED: 01-30-2014

ITEM	DESCRIPTION	PART No	QTY
1	TIRE & WHEEL ASSY	0354020	4
2	BRG KIT, LUG KIT, CAP NUTS	0303068	4
3	HUB	0329100	4
4	MOTOR, HYD - REAR WHEEL	0330256	2
5	AXLE - REAR DROP	0202115	1

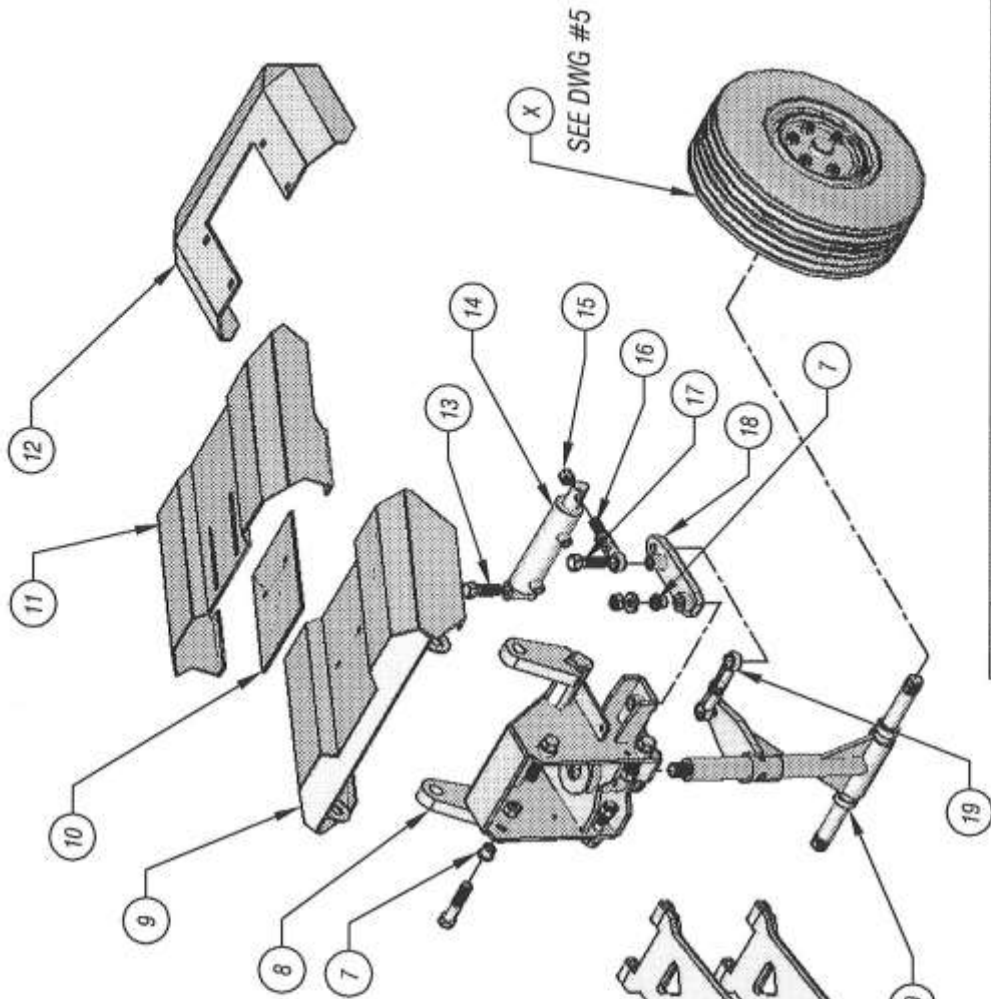


6	CLIP, HYD HOSE HOLD DOWN	0310144	6
7	SHAFT, DROP AXLE PIVOT	0248368	2
8	SPACER, DROP AXLE PIVOT	0449306	2
9	BLOCK, REAR DROP AXLE BUSH.	0485052	2
10	HEX HEAD SCREW	0346404	2
11	FLAT WASHER	0353020	2
12	LOCK WASHER	0353017	2
13	HEX HEAD SCREW	0346211	4
14	LOCK NUT, (NYLON INSERT)	0338102	4

TRANZ-FORMER MODEL 09092 - DWG #5

ISSUED: 07-24-2013

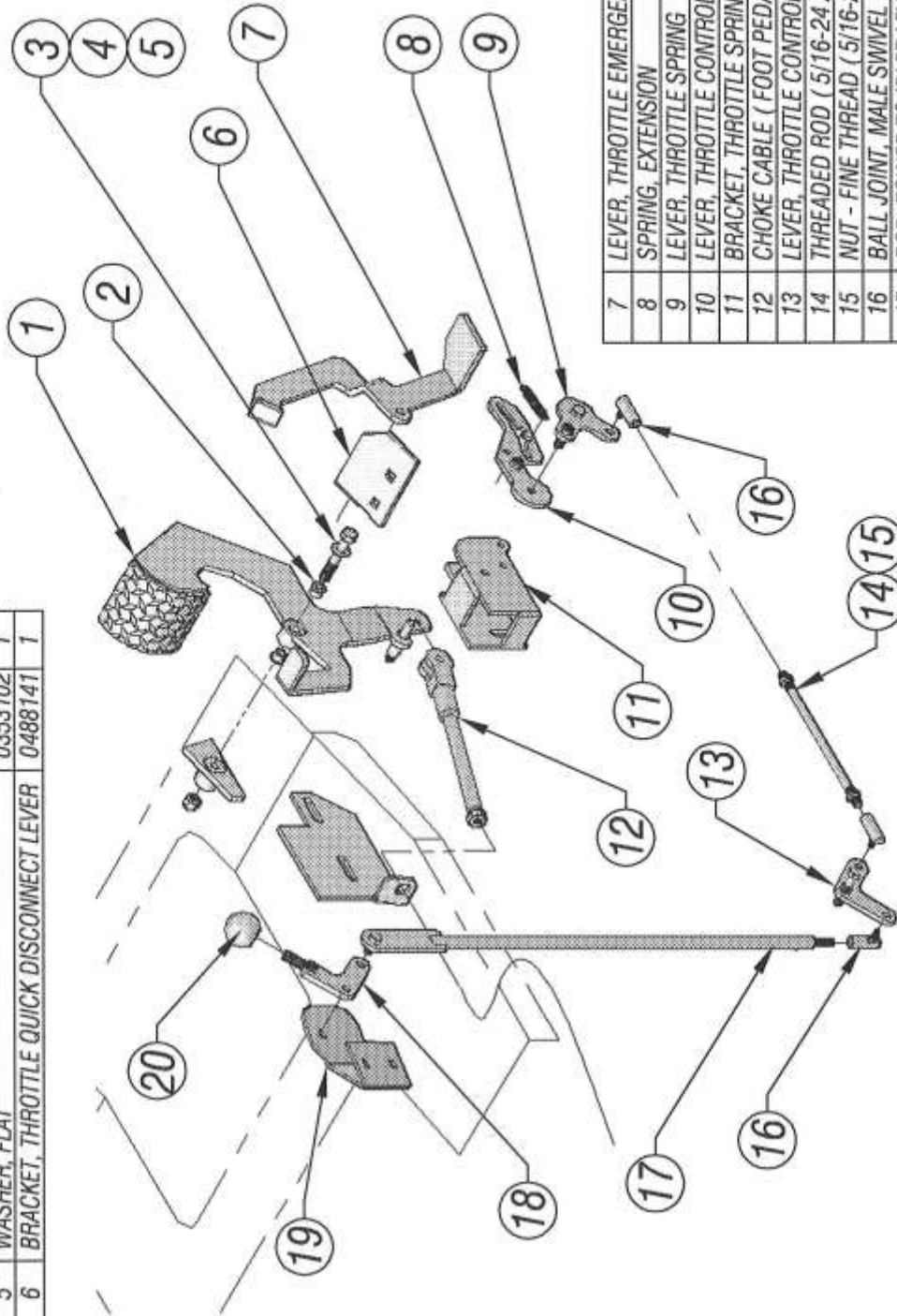
ITEM	DESCRIPTION	PART NO	QTY
1	STEERING COLUMN	0330230	1
2	STEERING WHEEL	0354139	1
3	STEERING WHEEL JAM NUT	0338076	1
4	PIN, DROP STEERING CYL MOUNTING	0240181	4
5	TUBE, DROP STEERING CYL LOCKING	0467654	4
6	MOUNT, DROP STEERING PIVOT	0276829	2
7	OILITE BUSHING	0307050	4
8	BOX, DROP STEERING PIVOT	0280068	1
9	GUARD, DROP STEERING CYL - INNER	0221626	1
10	PAD, DROP STEERG CYL GUARD WEAR	0486915	1
11	GUARD, DROP STEERING CYL - OUTER	0221625	1
12	FENDER, FAIRWAY ROLLER- FRONT	0216058	1
13	HEX HEAD BOLT	0346512	1
14	HYD CYLINDER, FRONT WHEEL	0330176	1
15	LOCK NUT, HYD CYL, FRONT WHEEL	0338110	1
16	BALL JOINT, HYD CYL	0303095	1



17	HEX HEAD BOLT	0346510	1
18	LEVER, DROP STEERING IDLER	0233275	1
19	BALL JOINT, FRONT WHEEL STEERING	0303093	2
20	AXLE, DROP STEERING	0202114	1
21	HYD CYL, FRONT LIFT	0330233	2
22	STEERING UNIT	0330231	1

TRANZ-FORMER MODEL 09092 - DWG # 6

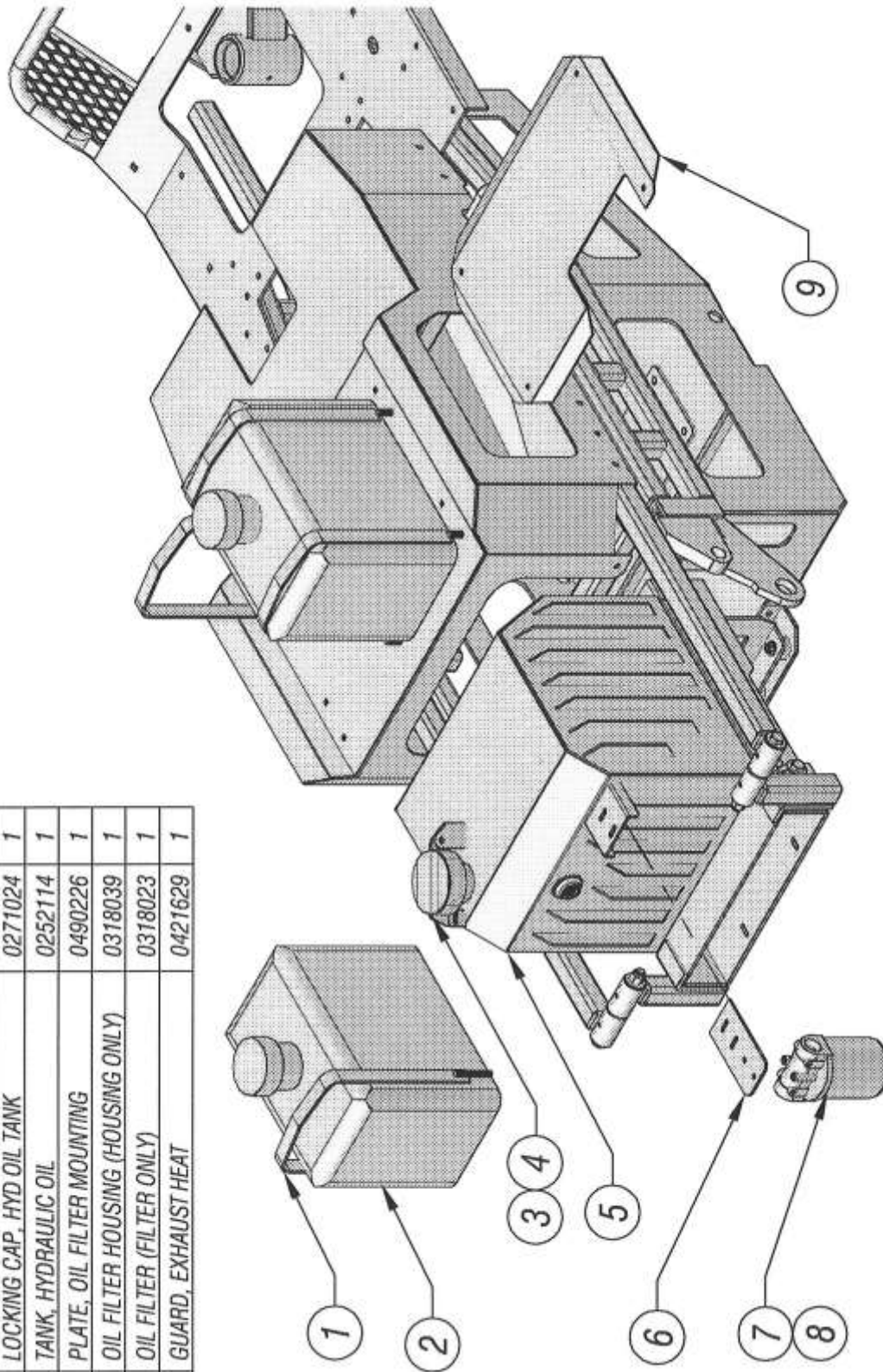
ITEM	DESCRIPTION	PART NO	QTY
1	PEDAL, FOOT	0268033	1
2	BUSHING, FLANGED - OILITE	0303020	3
3	BOLT, HEX HEAD	0346208	1
4	LOCK NUT (NYLON INSERT)	0338102	1
5	WASHER, FLAT	0353102	1
6	BRACKET, THROTTLE QUICK DISCONNECT LEVER	0488141	1



7	LEVER, THROTTLE EMERGENCY RELEASE	0433288	1
8	SPRING, EXTENSION	0350051	1
9	LEVER, THROTTLE SPRING	0233285	1
10	LEVER, THROTTLE CONTROL	0233286	1
11	BRACKET, THROTTLE SPRING	0288136	1
12	CHOKE CABLE (FOOT PEDAL TO PUMP)	0308043	1
13	LEVER, THROTTLE CONTROL - MID	0233287	1
14	THREADED ROD (5/16-24 x 6" LONG)	STOCK	1
15	NUT - FINE THREAD (5/16-24)	0338021	2
16	BALL JOINT, MALE SWIVEL	0336006	3
17	ROD, TOWER TO IDLER LEVER	0245203	1
18	LEVER, THROTTLE THROW	0233283	1
19	PLATE, THROTTLE / LEVER MOUNT	0290231	1
20	HAND KNOB, BLACK	0332005	1

TRANZ-FORMER MODEL 09092 - DWG #7

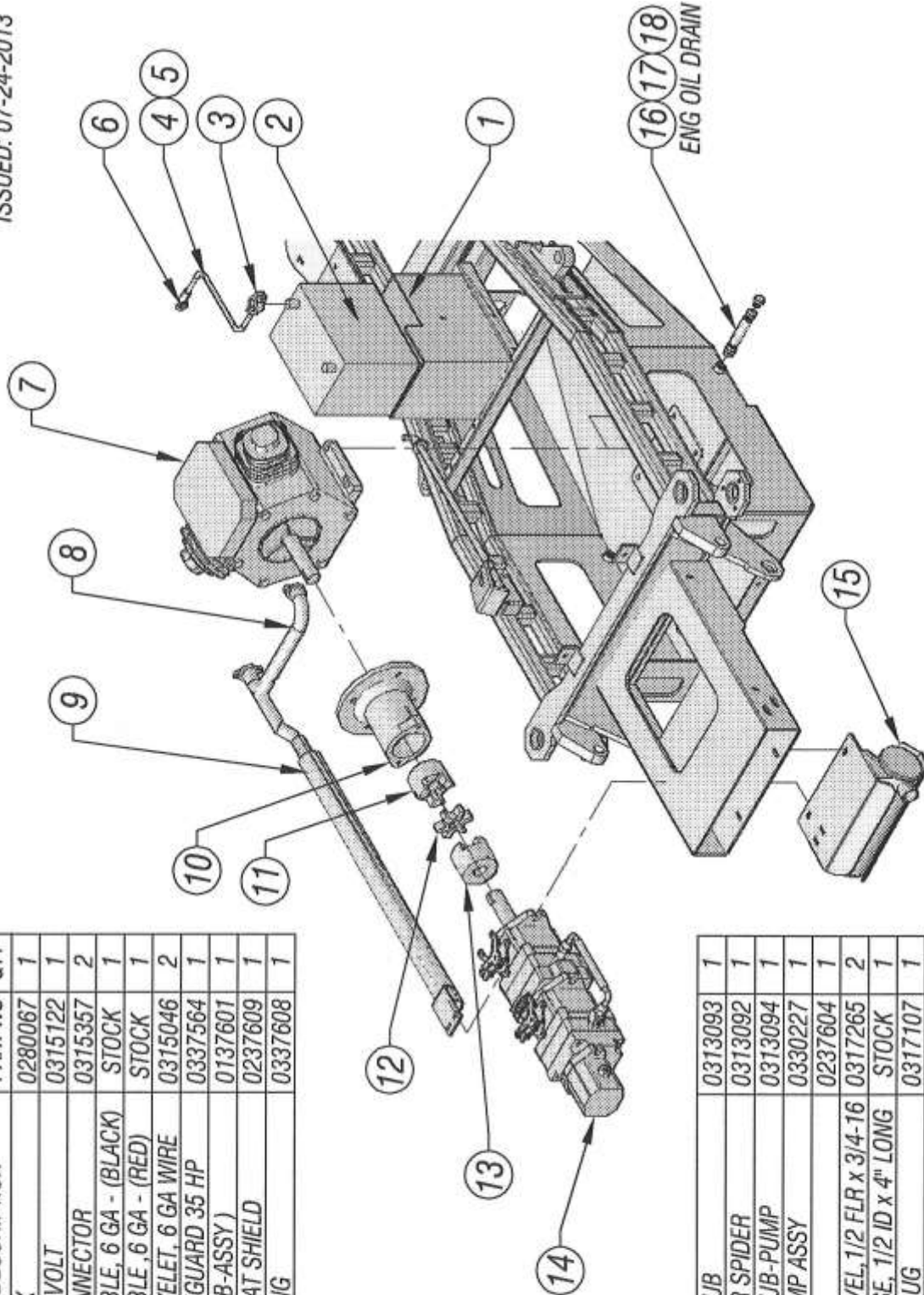
ITEM	DESCRIPTION	PART NO	QTY
1	CLAMP, 6 GAL, GAS TANK	0210187	4
2	TANK, GAS (6 GAL.)	0352111	2
3	CAP, HYD OIL TANK	0371061	1
4	LOCKING CAP, HYD OIL TANK	0271024	1
5	TANK, HYDRAULIC OIL	0252114	1
6	PLATE, OIL FILTER MOUNTING	0490226	1
7	OIL FILTER HOUSING (HOUSING ONLY)	0318039	1
8	OIL FILTER (FILTER ONLY)	0318023	1
9	GUARD, EXHAUST HEAT	0421629	1



TRANZ-FORMER MODEL 09092 - DWG #8

ISSUED: 07-24-2013

ITEM	DESCRIPTION	PART NO	QTY
1	BATTERY BOX	0280067	1
2	BATTERY, 12 VOLT	0315122	1
3	BATTERY CONNECTOR	0315357	2
4	BATTERY CABLE, 6 GA - (BLACK)	STOCK	1
5	BATTERY CABLE, 6 GA - (RED)	STOCK	1
6	TERMINAL EYELET, 6 GA WIRE	0315046	2
7	ENGINE, VANGUARD 35 HP	0337564	1
8	EXHAUST SUB-ASSY	0137601	1
9	EXHAUST HEAT SHIELD	0237609	1
10	BELL HOUSING	0337608	1

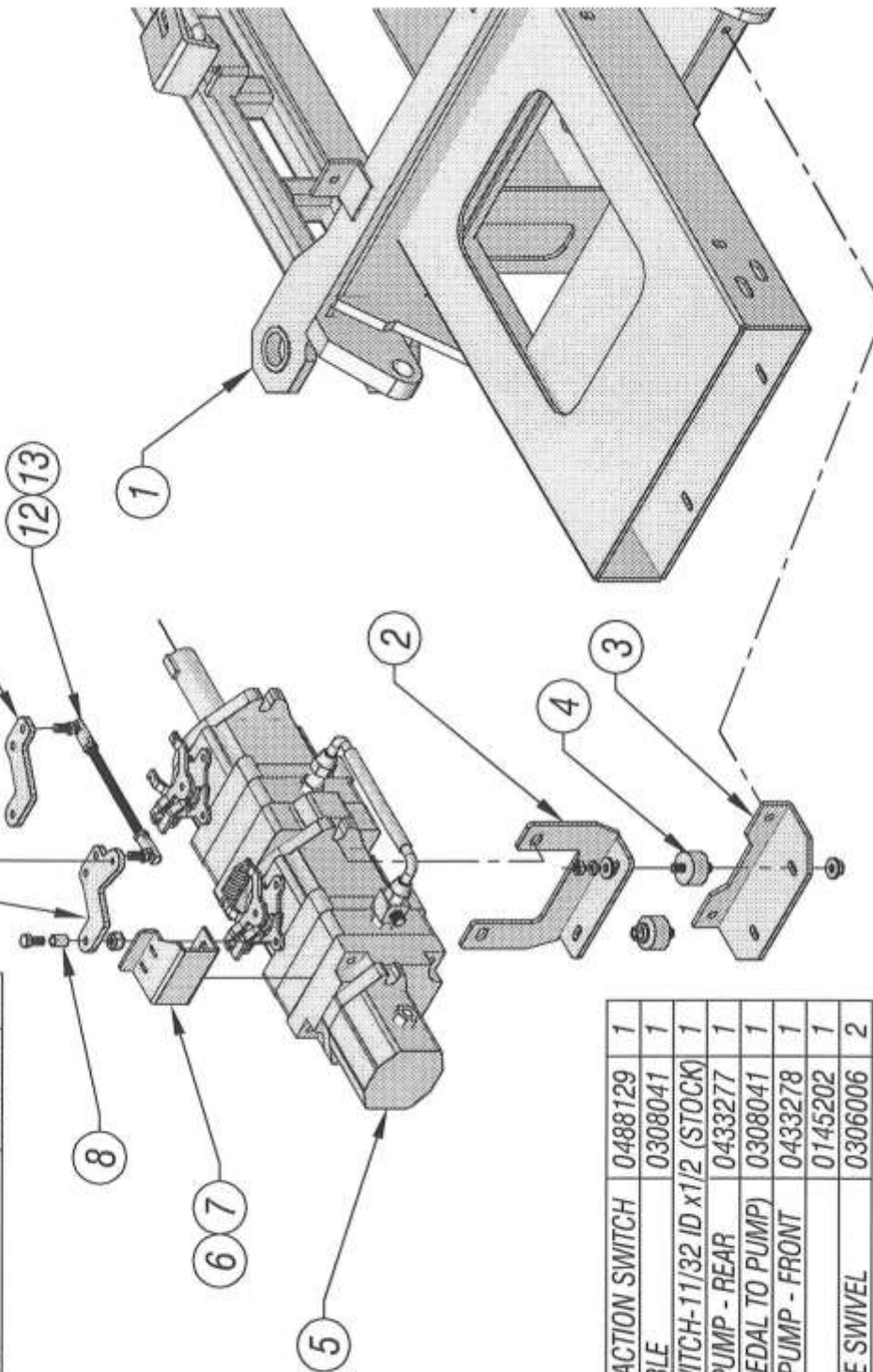


11	COUPLING HUB	0313093	1
12	HUB RUBBER SPIDER	0313092	1
13	COUPLING HUB-PUMP	0313094	1
14	TANDEM PUMP ASSY	0330227	1
15	MUFFLER	0237604	1
16	FEMALE SWIVEL, 1/2 FLR x 3/4-16	0317265	2
17	RUBBER HOSE, 1/2 ID x 4" LONG	STOCK	1
18	HEX HEAD PLUG	0317107	1

TRANZ-FORMER MODEL 09092 - DWG #9

ISSUED: 07-24-2013
ISSUED: 10-22-2013

ITEM	DESCRIPTION	PART NO	QTY
1	FRAME, FAIRWAY ROLLER BASE	0219524	1
2	BRACKET, HYD PUMP MTG - UPPER	0488126	1
3	BRACKET, HYD PUMP MTG - LOWER	0488127	1
4	RUBBER MOUNT	0376250	2
5	TANDEM PUMP ASSY	0330227	1

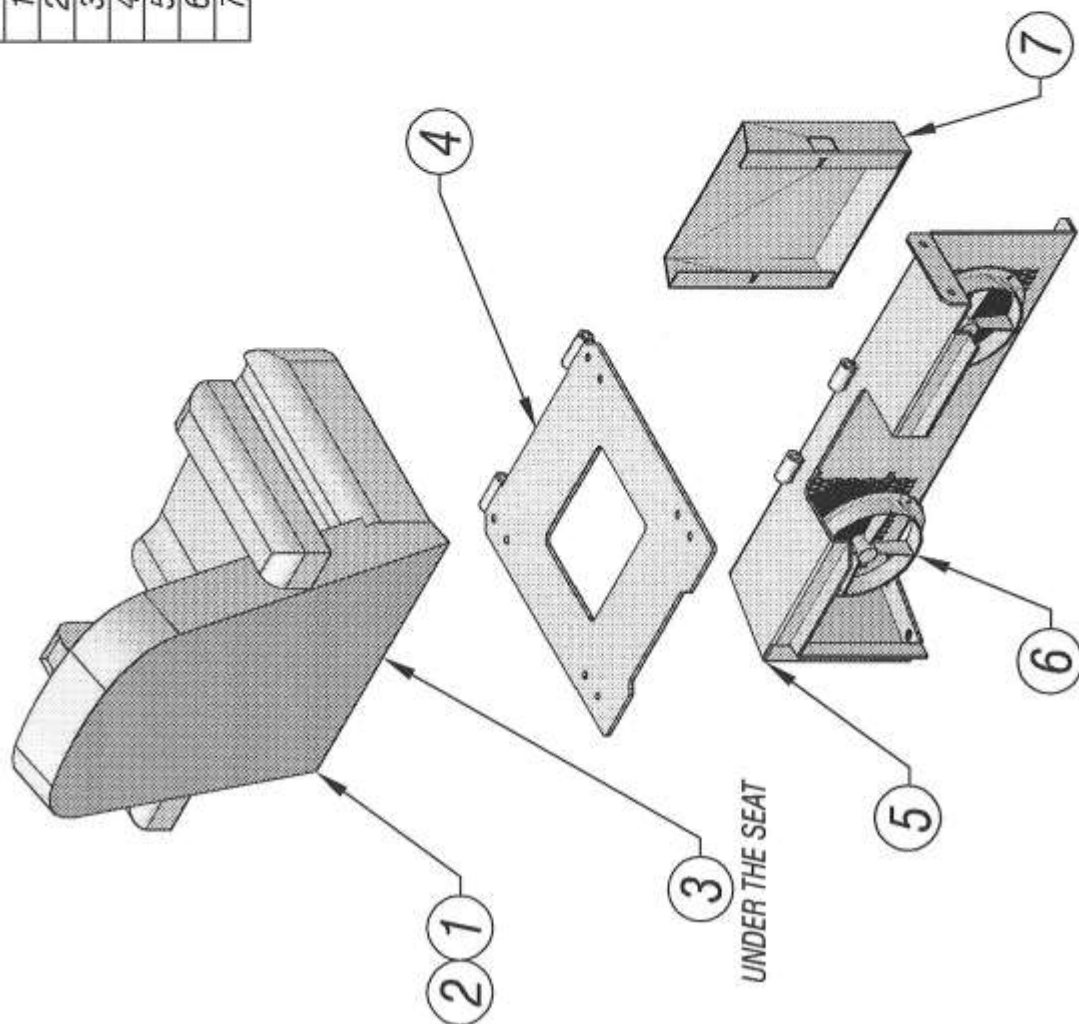


6	BRACKET, SNAP ACTION SWITCH	0488129	1
7	PUSH / PULL CABLE	0308041	1
8	SPACER, ACT.SWITCH-11/32 ID x1/2 (STOCK)		1
9	LEVER, TANDEM PUMP - REAR	0433277	1
10	CHOKE CABLE (PEDAL TO PUMP)	0308041	1
11	LEVER, TANDEM PUMP - FRONT	0433278	1
12	PUMP LINKAGE	0145202	1
13	BALL JOINT, MALE SWIVEL	0306006	2

TRANZ-FORMER MODEL 09092 - DWG #10

ITEM	DESCRIPTION	PART NO	QTY
1	SEAT	0347011	1
2	SEAT BELT	0347012	1
3	SLIDE ASSY KIT (FOR SEAT)	0347005	1
4	PLATE, SEAT MOUNTING	0290218	1
5	HOUSING, ENGINE HOOD	0228319	1
6	COOLING FAN	0315418	3
7	HOLDER, CLIPBOARD	0481056	1

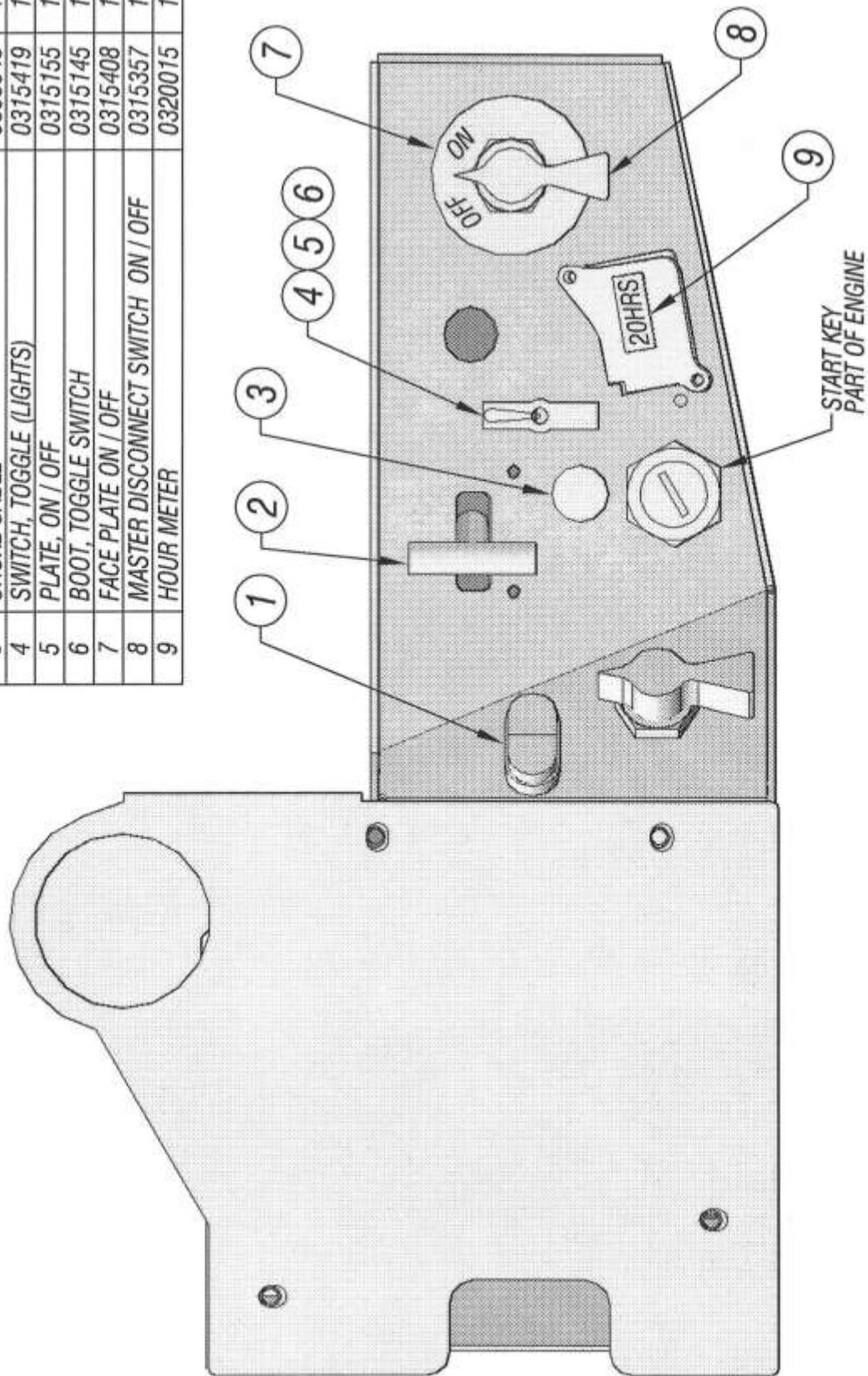
ISSUED: 07-24-2013



TRANZ-FORMER MODEL 09092 - DWG #11

ISSUED: 07-24-2013

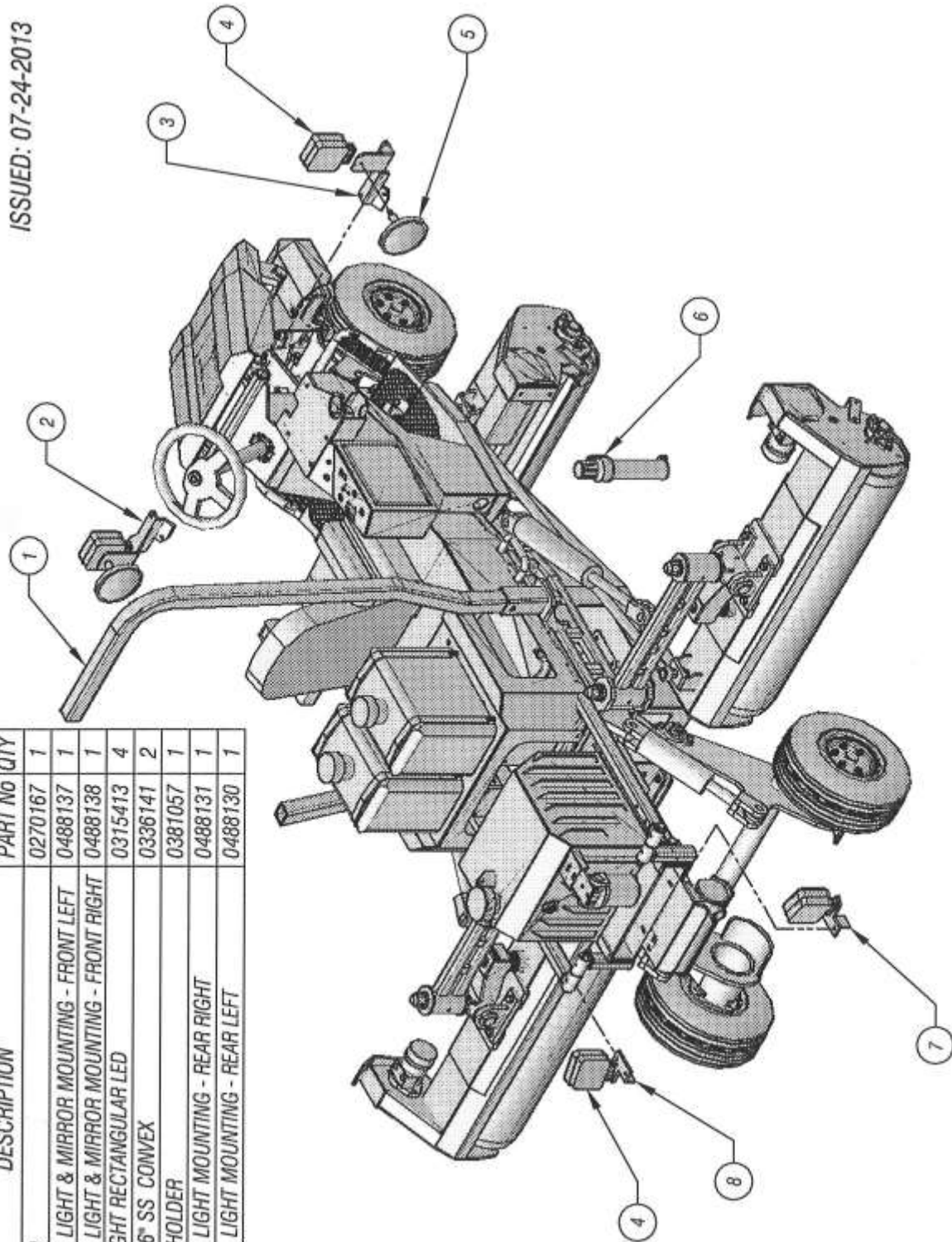
ITEM	DESCRIPTION	PART NO	QTY
1	ROCKER SWITCH (FAN)	0315390	1
2	THROTTLE CABLE	0337583	1
3	CHOKE CABLE	0308043	1
4	SWITCH, TOGGLE (LIGHTS)	0315419	1
5	PLATE, ON / OFF	0315155	1
6	BOOT, TOGGLE SWITCH	0315145	1
7	FACE PLATE ON / OFF	0315408	1
8	MASTER DISCONNECT SWITCH ON / OFF	0315357	1
9	HOUR METER	0320015	1



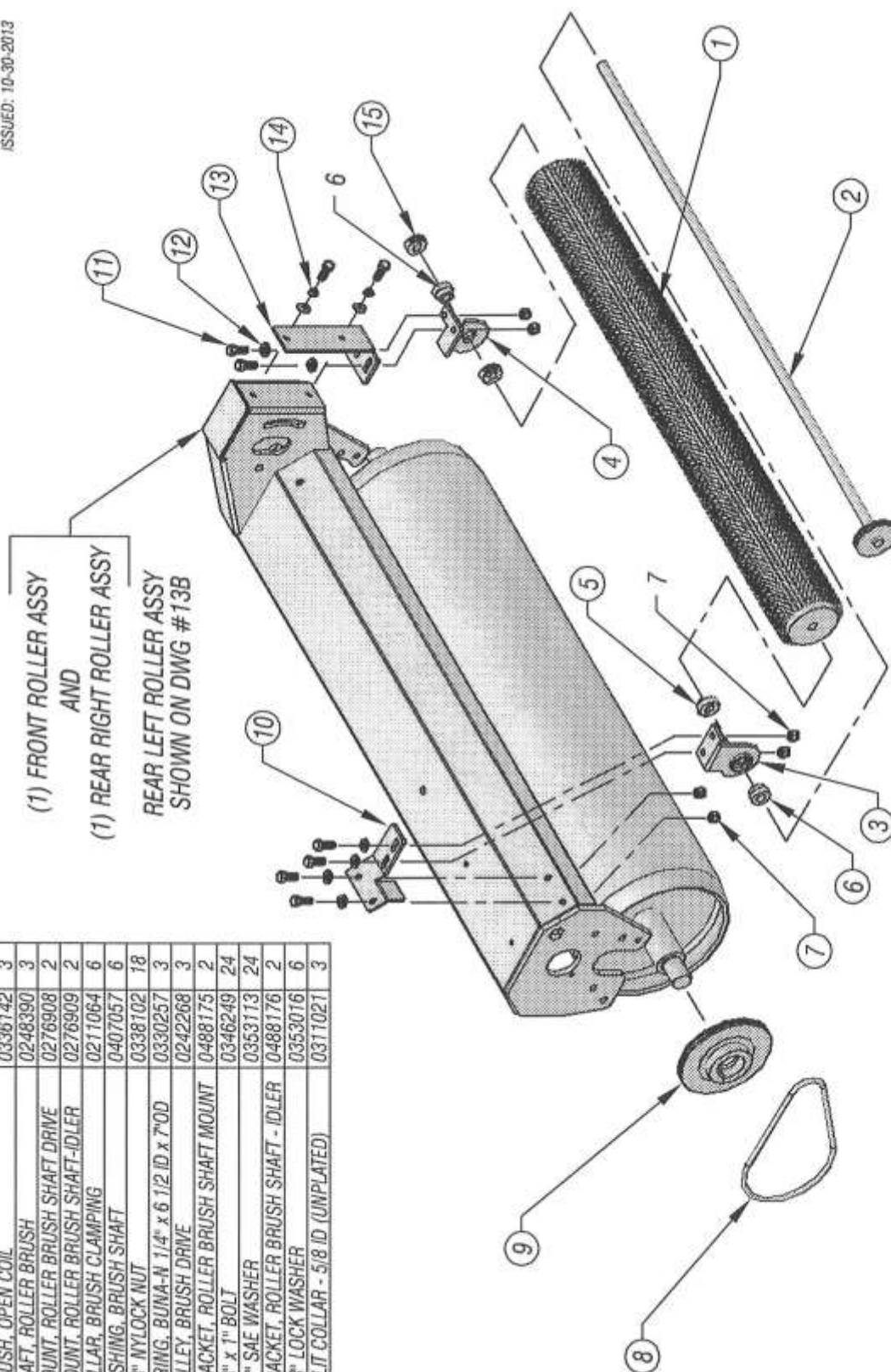
TRANZ-FORMER MODEL 09092 - DWG #12

ISSUED: 07-24-2013

ITEM	DESCRIPTION	PART No	QTY
1	ROLL BAR	0270167	1
2	BRACKET, LIGHT & MIRROR MOUNTING - FRONT LEFT	0488137	1
3	BRACKET, LIGHT & MIRROR MOUNTING - FRONT RIGHT	0488138	1
4	FLOOD LIGHT RECTANGULAR LED	0315413	4
5	MIRROR, 6" SS CONVEX	0336141	2
6	MANUAL HOLDER	0381057	1
7	BRACKET, LIGHT MOUNTING - REAR RIGHT	0488131	1
8	BRACKET, LIGHT MOUNTING - REAR LEFT	0488130	1

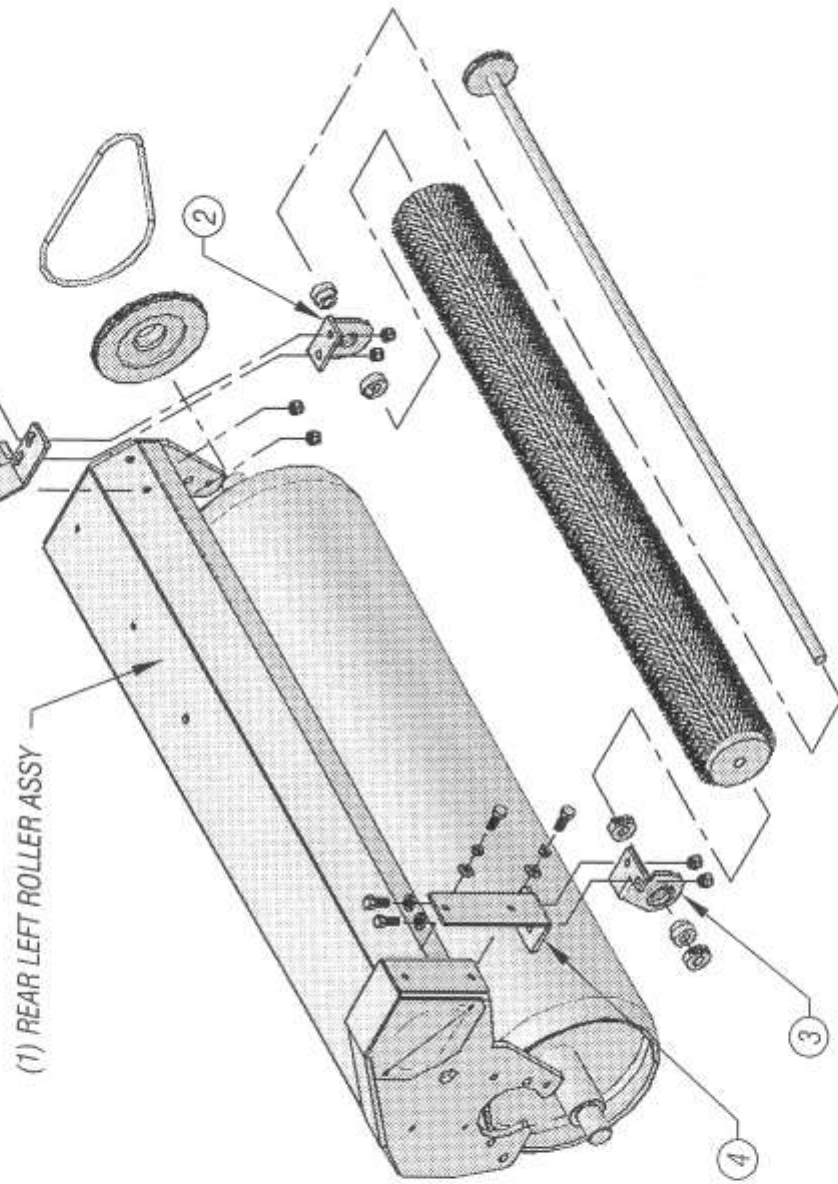


TRANZ-FORMER MODEL 09092 - DWG #13



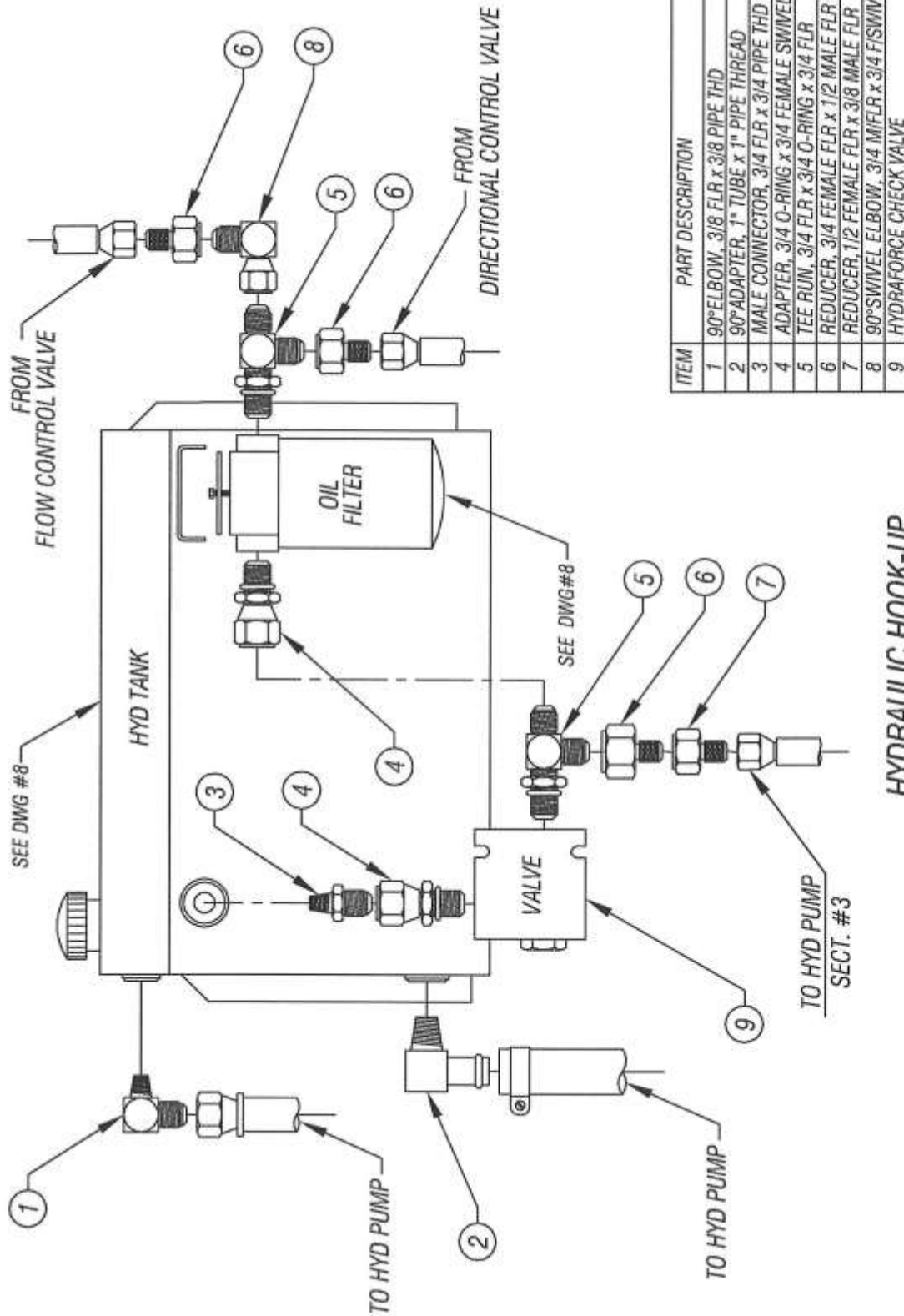
ROTARY BRUSH SYSTEM
OPTION #0161373
TRANZ-FORMER MODEL 09092 - DWG #13A

ITEM	PART DESCRIPTION	PART#	QTY
1	BRACKET, ROLLER BRUSH SHAFT MOUNT	0488173	1
2	MOUNT, ROLLER BRUSH SHAFT DRIVE	0276906	1
3	MOUNT, ROLLER BRUSH SHAFT IDLER	0276907	1
4	BRACKET, ROLLER BRUSH SHAFT IDLER	0488174	1



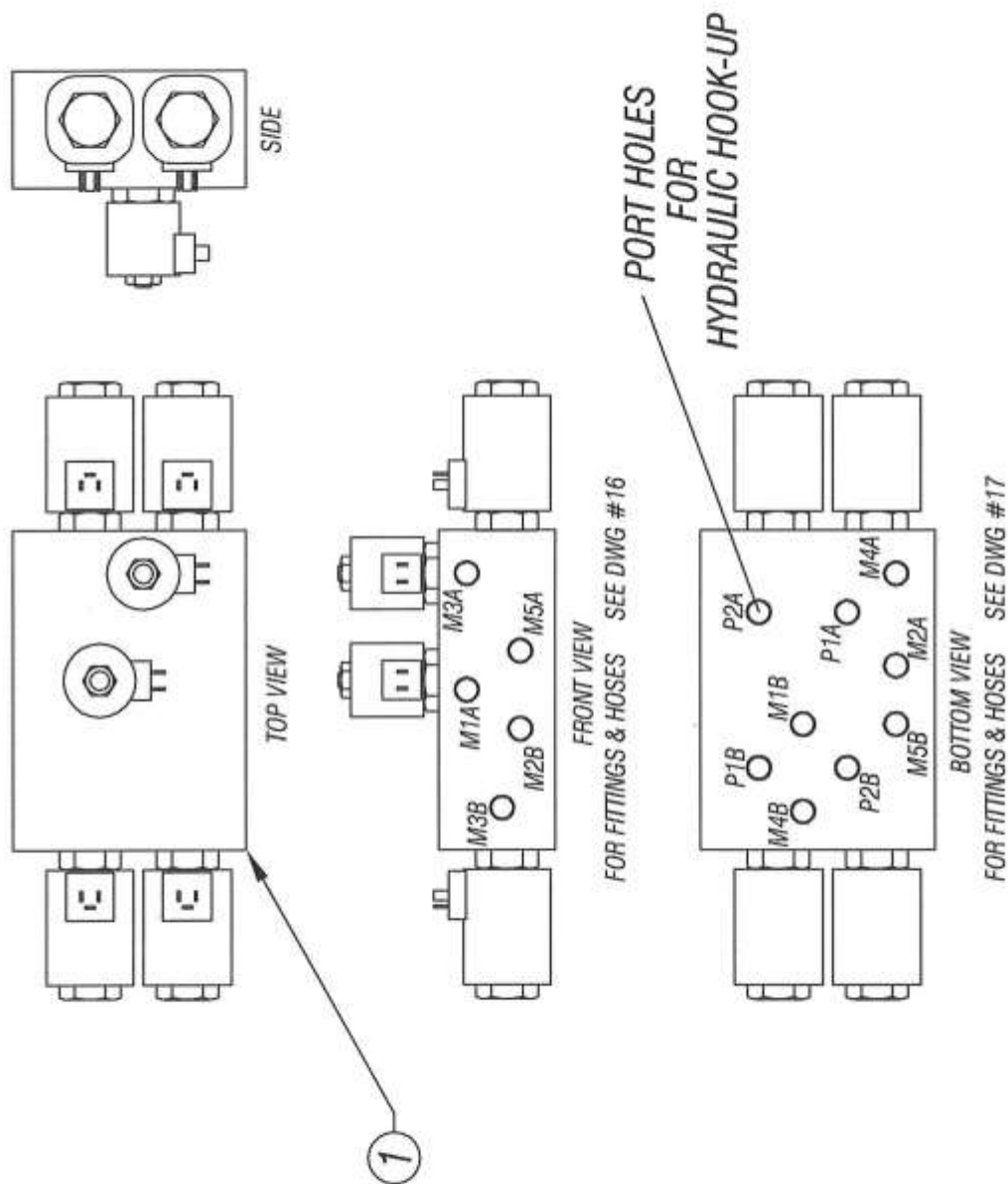
NOTE:
 ROLLER PARTS, NOT CALLED OUT
 ON THIS DRAWING, ARE THE SAME
 FOR ALL (3) ROLLER ASSY'S

ROTARY BRUSH SYSTEM
 OPTION #0161373
 TRANZ-FORMER MODEL 09092 - DWG #13B



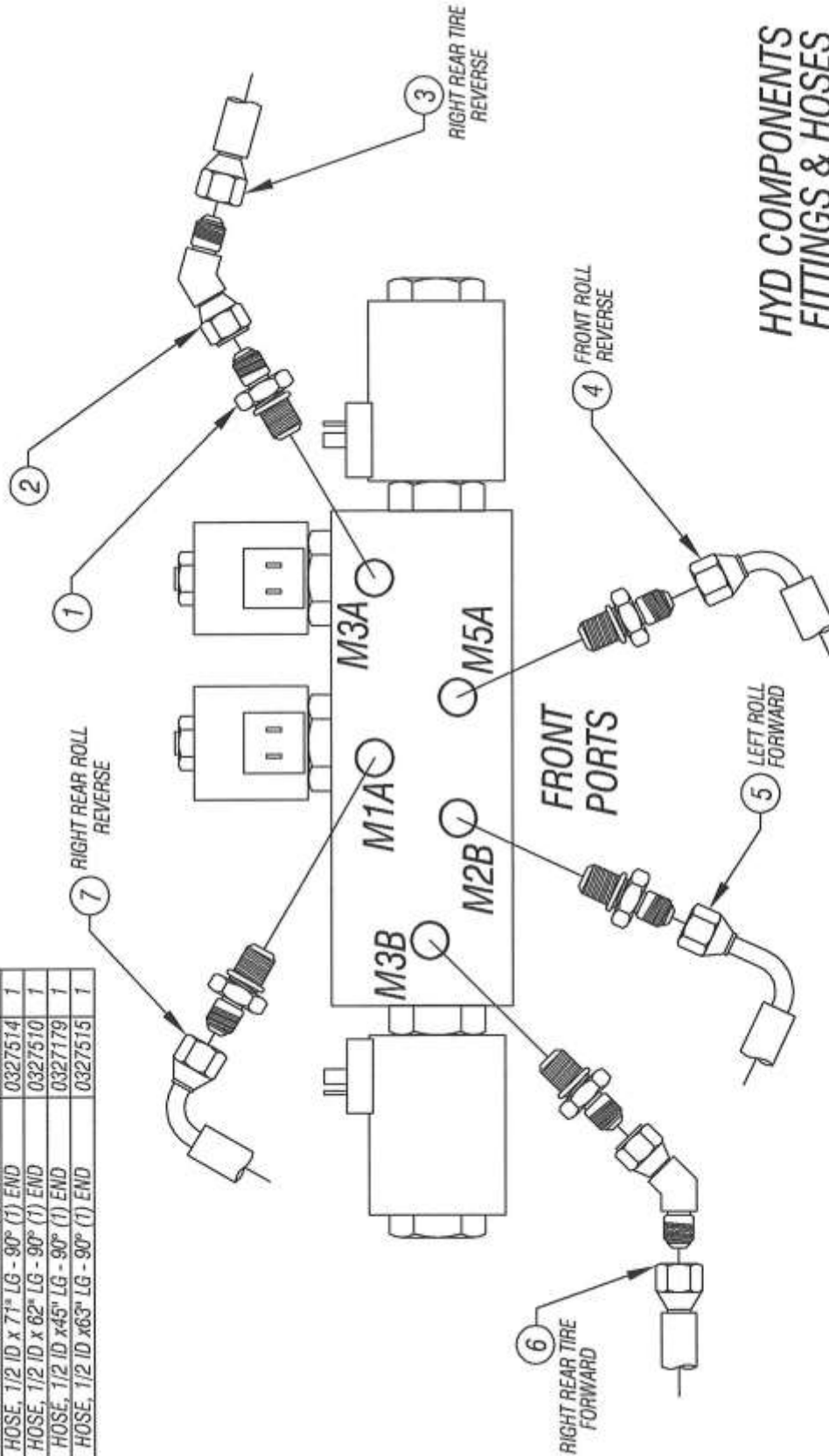
HYDRAULIC HOOK-UP
COMPONENTS & FITTINGS
TRANZ-FORMER MODEL 09092 - DWG #14

ITEM	PART DESCRIPTION	PART#	QTY
1	HYDRAULIC MANIFOLD ASSY	0330247	1



**HYDRAULIC MANIFOLD ASSY
TRANZ-FORMER MODEL - DWG #15**

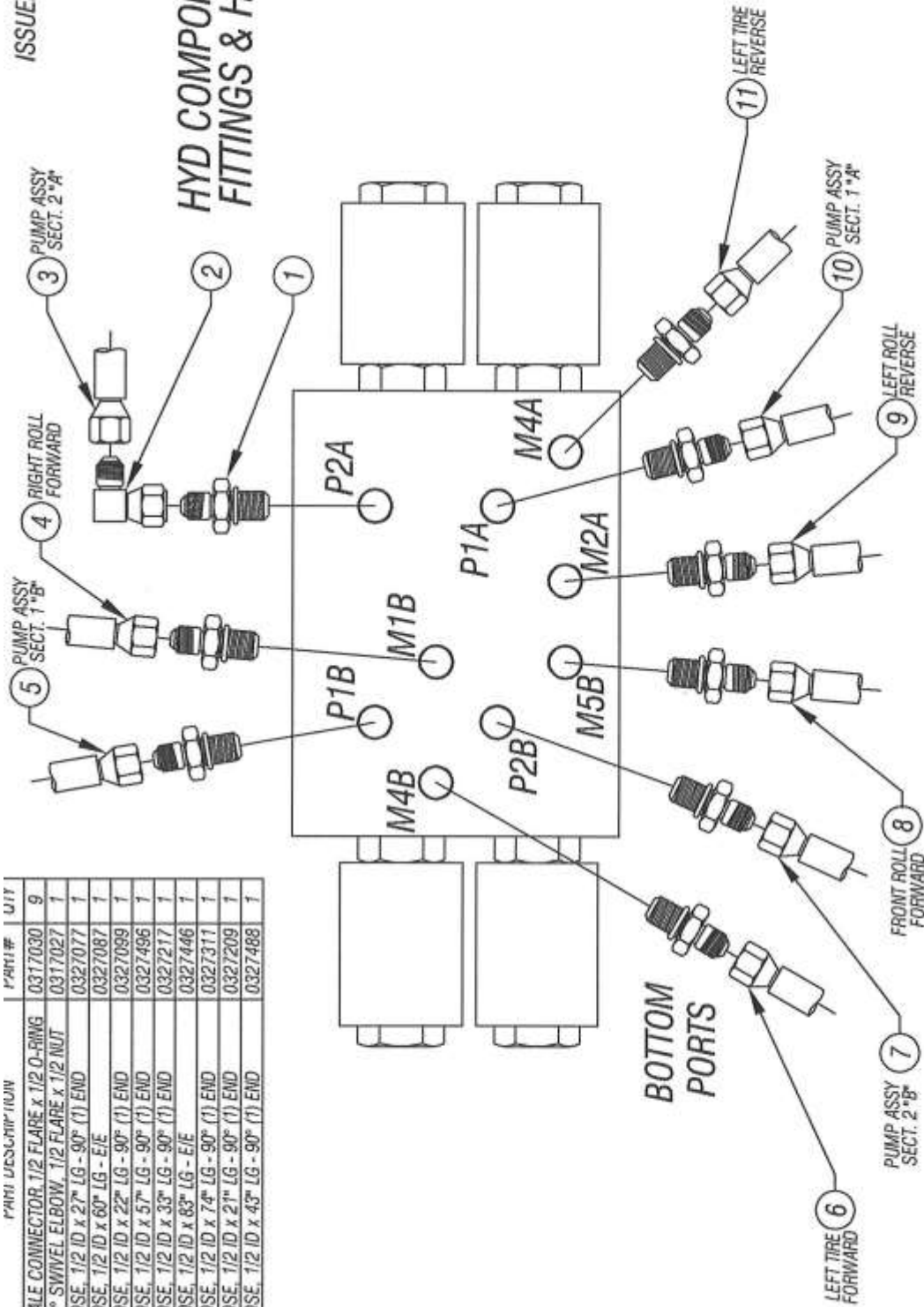
ITEM	PART DESCRIPTION	PART #	QTY
1	MALE CONNECTOR, 1/2 FLARE x 1/2 O-RING	0317030	5
2	45° ELBOW, 1/2 FLARE x 1/2 NUT	0317033	2
3	HOSE, 1/2 ID x 54" LG - 90° (1) END	0327261	1
4	HOSE, 1/2 ID x 71" LG - 90° (1) END	0327514	1
5	HOSE, 1/2 ID x 62" LG - 90° (1) END	0327510	1
6	HOSE, 1/2 ID x 45" LG - 90° (1) END	0327179	1
7	HOSE, 1/2 ID x 63" LG - 90° (1) END	0327515	1



HYDRAULIC HOOK-UP
HYDRAULIC MANIFOLD ASSY FRONT PORT HOLES
TRANZ-FORMER MODEL 09092 - DWG #16

ITEM	PART DESCRIPTION	PART #	QTY
1	MALE CONNECTOR 1/2 FLARE x 1/2 O-RING	0317030	9
2	90° SWIVEL ELBOW 1/2 FLARE x 1/2 NUT	0317027	1
3	HOSE 1/2 ID x 27" LG - 90° (1) END	0327077	1
4	HOSE 1/2 ID x 60" LG - E/E	0327087	1
5	HOSE 1/2 ID x 22" LG - 90° (1) END	0327099	1
6	HOSE 1/2 ID x 57" LG - 90° (1) END	0327496	1
7	HOSE 1/2 ID x 33" LG - 90° (1) END	0327217	1
8	HOSE 1/2 ID x 83" LG - E/E	0327446	1
9	HOSE 1/2 ID x 74" LG - 90° (1) END	0327311	1
10	HOSE 1/2 ID x 21" LG - 90° (1) END	0327209	1
11	HOSE 1/2 ID x 43" LG - 90° (1) END	0327488	1

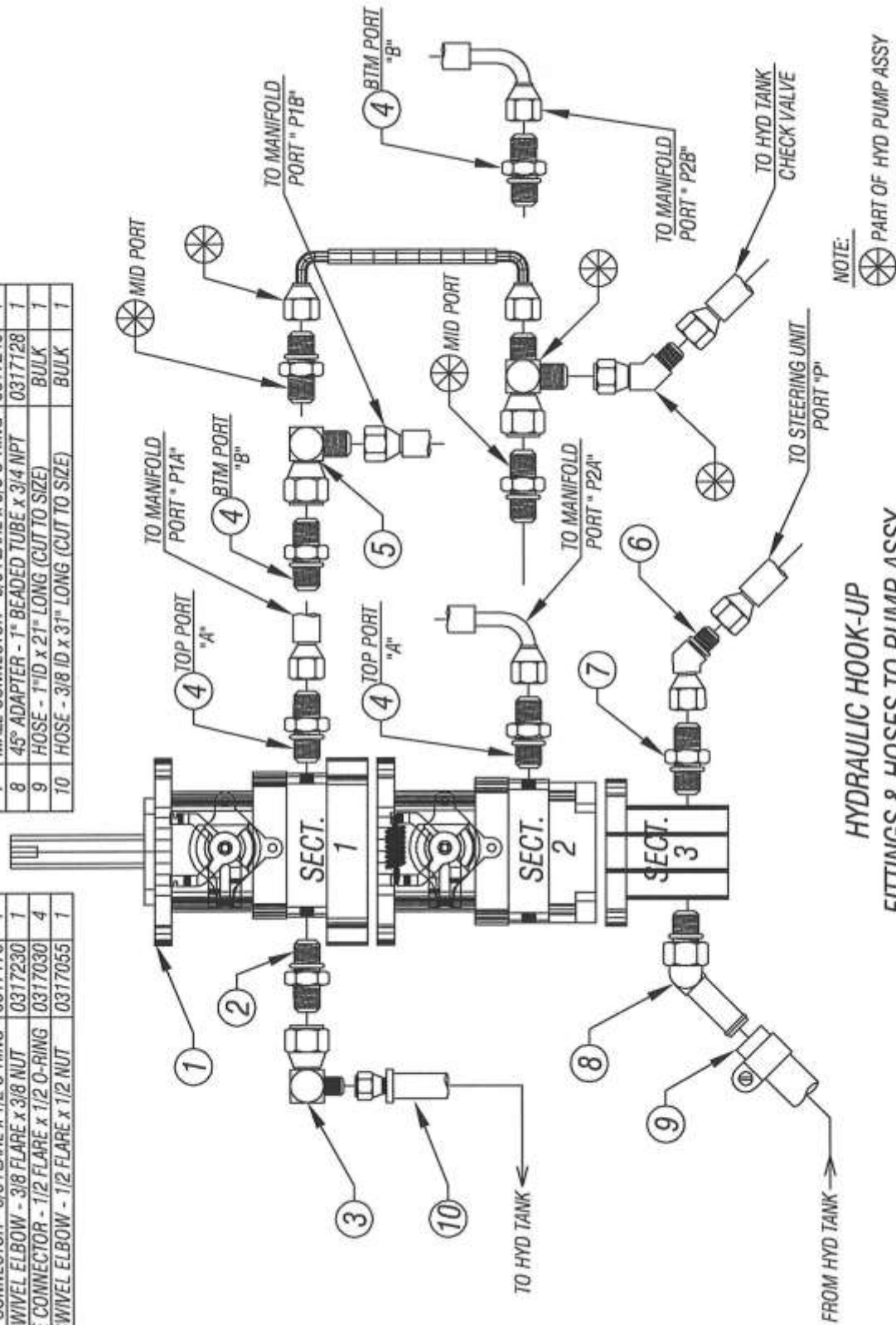
HYD COMPONENTS
FITTINGS & HOSES



HYDRAULIC HOOK-UP
HYDRAULIC MANIFOLD ASSY BOTTOM PORT HOLES
TRANZ-FORMER MODEL 09092 - DWG #17

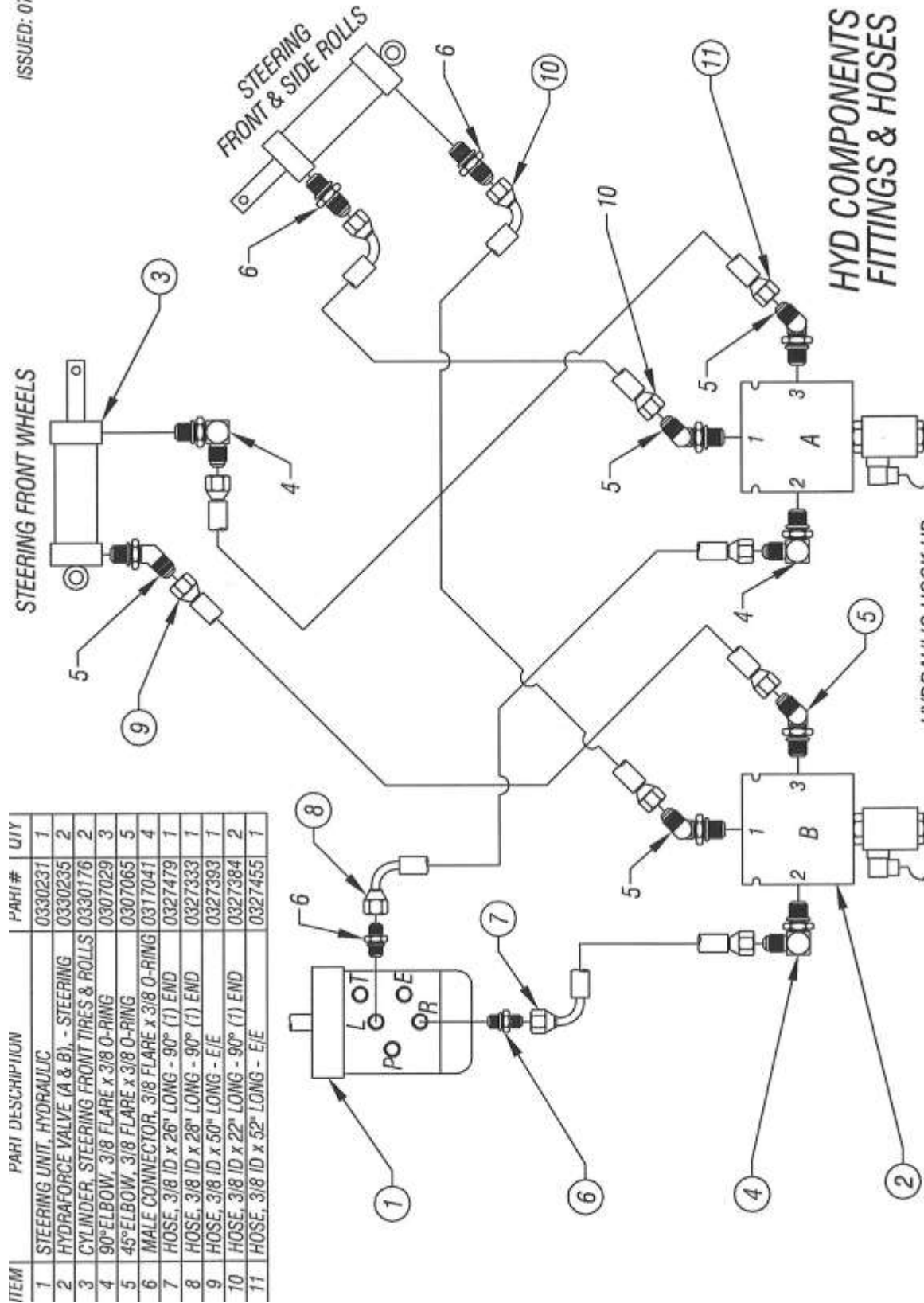
ITEM	PART DESCRIPTION	PART #	QTY
1	HYDROGEAR TANDEM PUMP ASSY	0330227	1
2	MALE CONNECTOR - 3/8 FLARE x 1/2 O-RING	0317173	1
3	90° SWIVEL ELBOW - 3/8 FLARE x 3/8 NUT	0317230	1
4	MALE CONNECTOR - 1/2 FLARE x 1/2 O-RING	0317030	4
5	90° SWIVEL ELBOW - 1/2 FLARE x 1/2 NUT	0317055	1

ITEM	PART DESCRIPTION	PART #	QTY
6	45° SWIVEL ELBOW - 3/8 FLARE x 3/8 NUT	0317032	1
7	MALE CONNECTOR - 3/8 FLARE x 5/8 O-RING	0317248	1
8	45° ADAPTER - 1" BEADED TUBE x 3/4 NPT	0317128	1
9	HOSE - 1" ID x 21" LONG (CUT TO SIZE)	BULK	1
10	HOSE - 3/8 ID x 31" LONG (CUT TO SIZE)	BULK	1



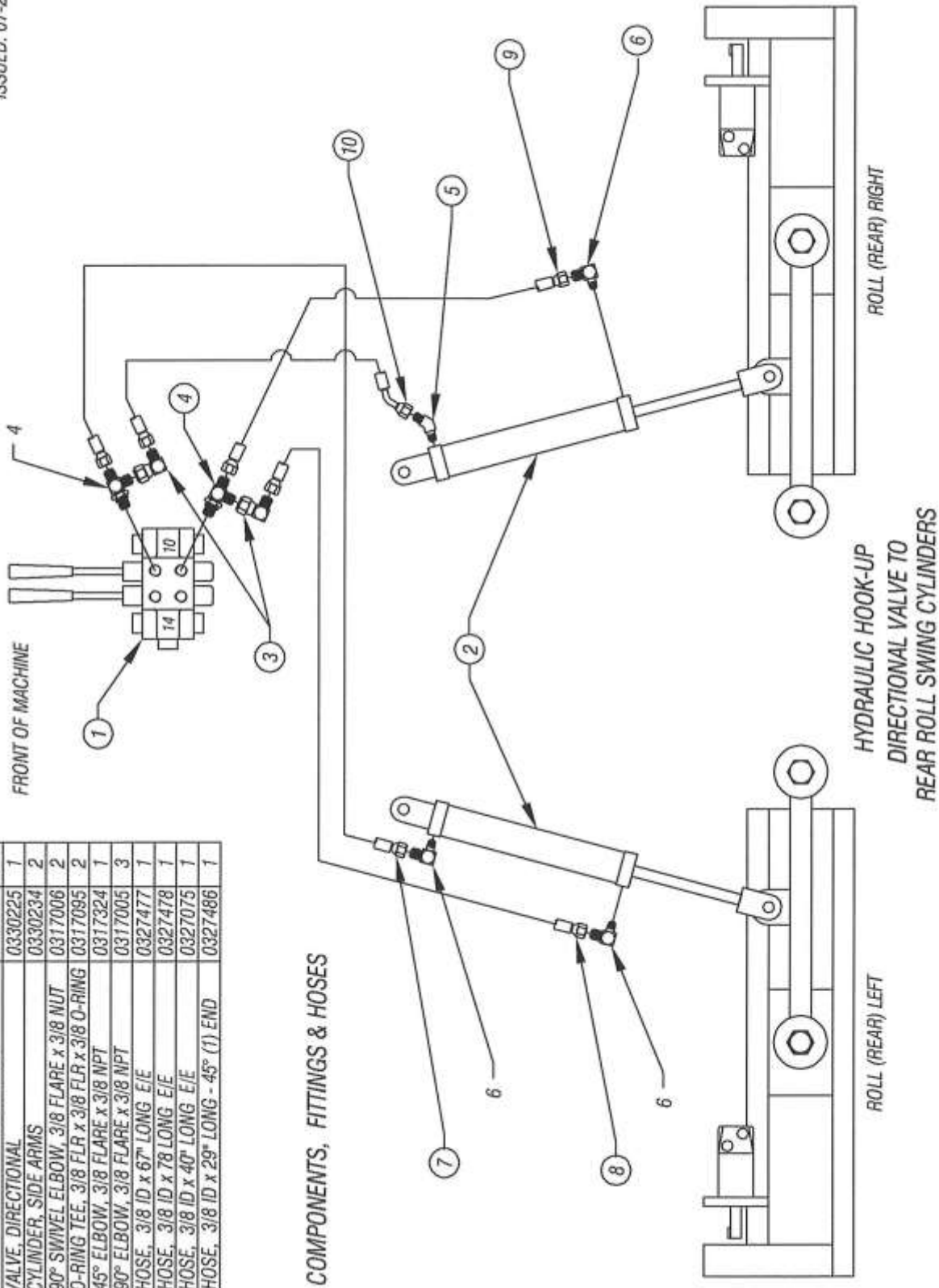
HYDRAULIC HOOK-UP
FITTINGS & HOSES TO PUMP ASSY

TRANZ-FORMER MODEL 09092 - DWG #18



TRANS-FORMER MODEL 09092 - DWG #19

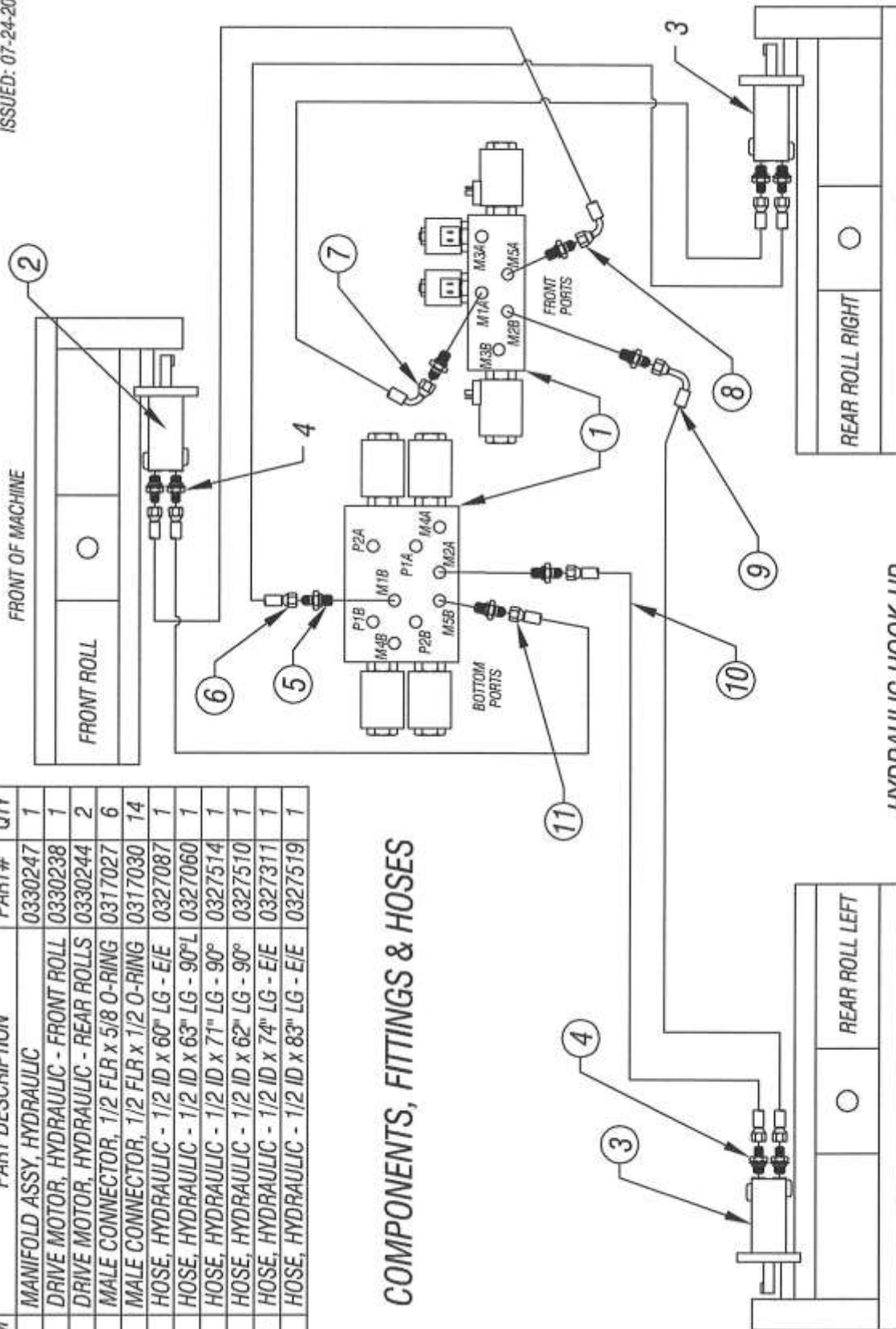
ITEM	PART DESCRIPTION	PART #	QTY
1	VALVE, DIRECTIONAL	0330225	1
2	CYLINDER, SIDE ARMS	0330234	2
3	90° SWIVEL ELBOW, 3/8 FLARE x 3/8 NUT	0317006	2
4	O-RING TEE, 3/8 FLR x 3/8 FLR x 3/8 O-RING	0317095	2
5	45° ELBOW, 3/8 FLARE x 3/8 NPT	0317324	1
6	90° ELBOW, 3/8 FLARE x 3/8 NPT	0317005	3
7	HOSE, 3/8 ID x 67" LONG E/E	0327477	1
8	HOSE, 3/8 ID x 78" LONG E/E	0327478	1
9	HOSE, 3/8 ID x 40" LONG E/E	0327075	1
10	HOSE, 3/8 ID x 29" LONG - 45° (1) END	0327486	1



TRANZ-FORMER MODEL 09092 - DWG #20

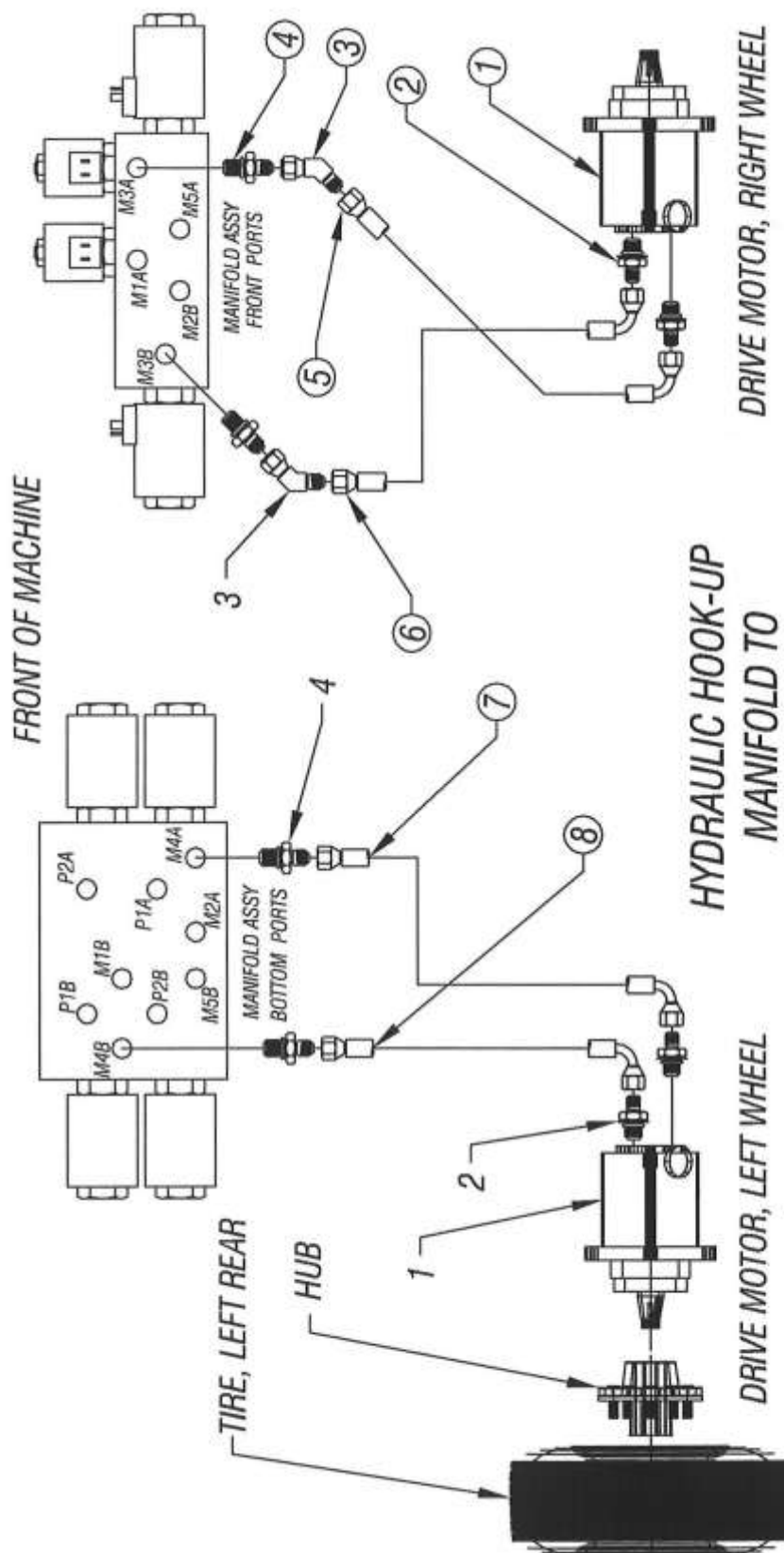
ITEM	PART DESCRIPTION	PART#	QTY
1	MANIFOLD ASSY, HYDRAULIC	0330247	1
2	DRIVE MOTOR, HYDRAULIC - FRONT ROLL	0330238	1
3	DRIVE MOTOR, HYDRAULIC - REAR ROLLS	0330244	2
4	MALE CONNECTOR, 1/2 FLR x 5/8 O-RING	0317027	6
5	MALE CONNECTOR, 1/2 FLR x 1/2 O-RING	0317030	14
6	HOSE, HYDRAULIC - 1/2 ID x 60" LG - E/E	0327087	1
7	HOSE, HYDRAULIC - 1/2 ID x 63" LG - 90°L	0327060	1
8	HOSE, HYDRAULIC - 1/2 ID x 71" LG - 90°	0327514	1
9	HOSE, HYDRAULIC - 1/2 ID x 62" LG - 90°	0327510	1
10	HOSE, HYDRAULIC - 1/2 ID x 74" LG - E/E	0327311	1
11	HOSE, HYDRAULIC - 1/2 ID x 83" LG - E/E	0327519	1

COMPONENTS, FITTINGS & HOSES

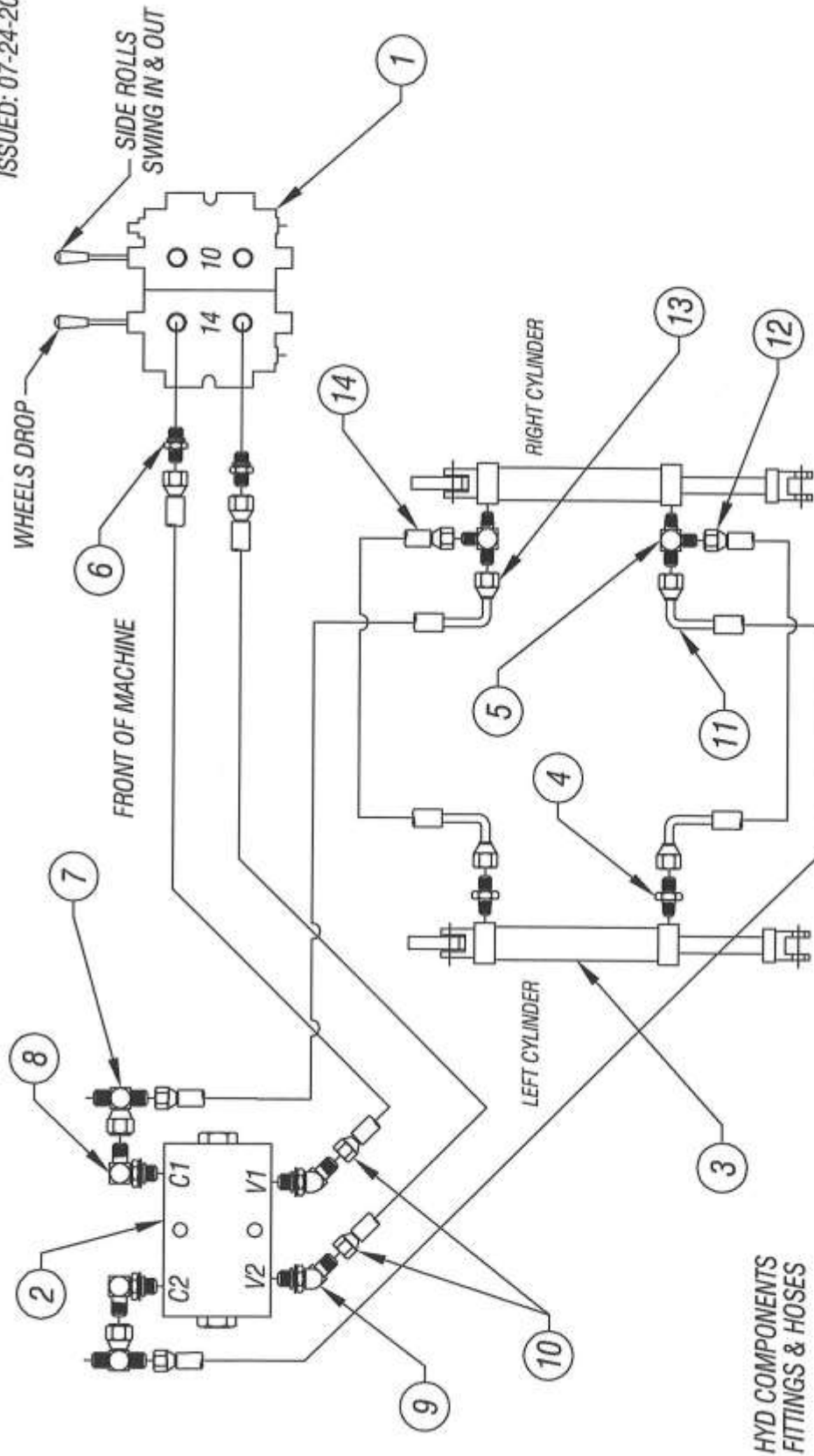


COMPONENTS, FITTINGS & HOSES

ITEM	PART DESCRIPTION	PART#	QTY
1	MOTOR, HYDRAULIC - REAR WHEELS	0330240	2
2	MALE CONNECTOR, 1/2 FLARE x 5/8 O-RING	0317027	4
3	45° SWIVEL ELBOW - 1/2 FLARE x 1/2 NUT	0317033	2
4	MALE CONNECTOR, 1/2 FLARE x 1/2 O-RING	0317030	4
5	HOSE, HYD - 1/2 ID x 54" LONG 90° (1) END	0327261	1
6	HOSE, HYD - 1/2 ID x 45" LONG 90° (1) END	0327179	1
7	HOSE, HYD - 1/2 ID x 43" LONG 90° (1) END	0327488	1
8	HOSE, HYD - 1/2 ID x 57" LONG 90° (1) END	0327496	1



ISSUED: 07-24-2013

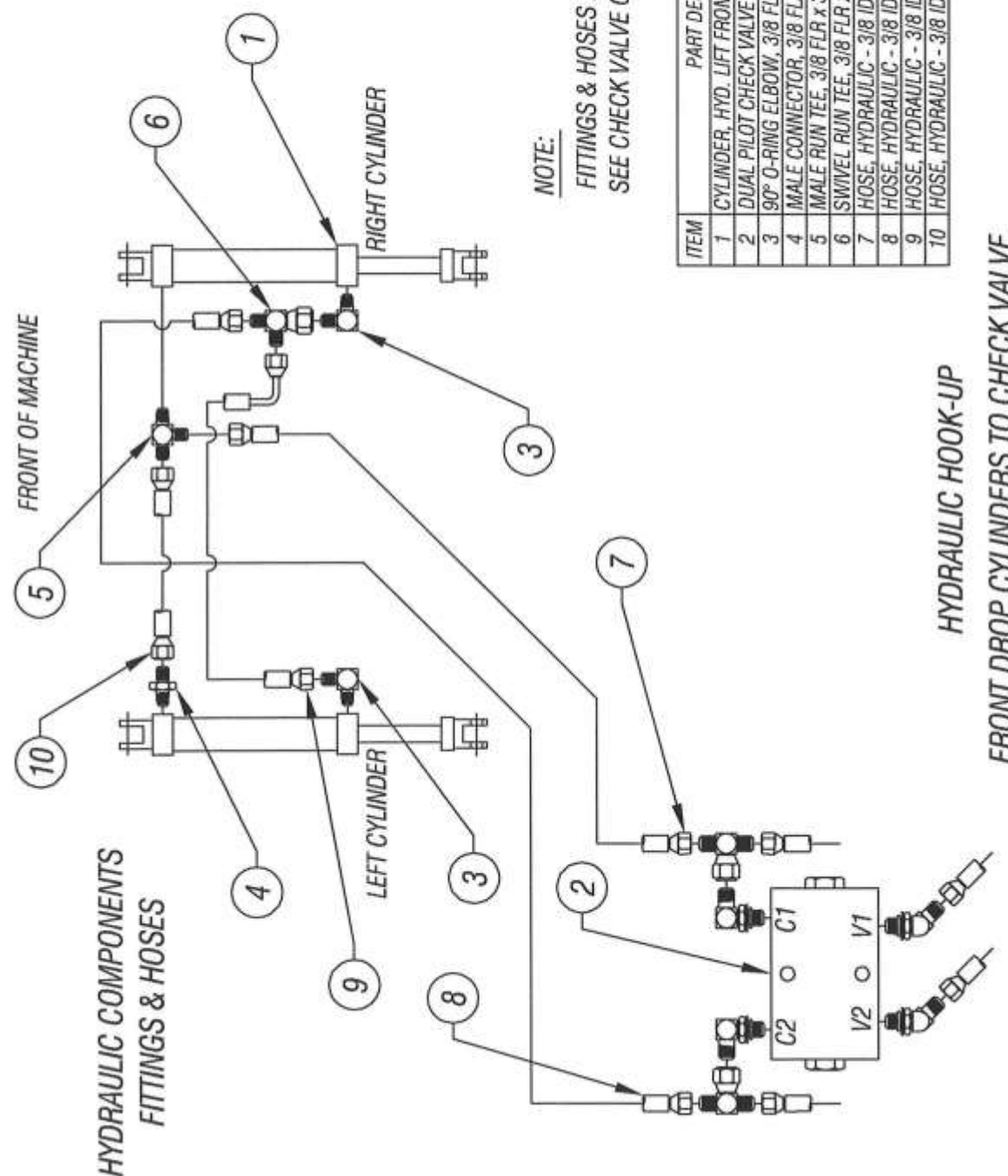


ITEM	PART DESCRIPTION	PART #	QTY
1	VALVE, DIRECTIONAL	0330225	1
2	DUAL PILOT CHECK VALVE	0330236	1
3	CYLINDER, HYD. LIFT REAR WHEELS	0330232	2
4	MALE CONNECTOR, 3/8 FLARE x 3/8 NPT	0317185	2
5	MALE RUN TEE, 3/8 FLR x 3/8 NPT x 3/8 FLR	0307323	3
6	MALE CONNECTOR, 3/8 FLR x 3/8 O-RING	0317041	2
7	SWIVEL *TH 3/8 FLR x 3/8 NUT x 3/8 FLR	0317258	2

ITEM	PART DESCRIPTION	PART #	QTY
8	90° O-RING ELBOW, 3/8 FLR x 1/2 O-RING	0317044	2
9	45° O-RING ELBOW, 3/8 FLR x 1/2 O-RING	0317280	2
10	HOSE, HYDRAULIC - 3/8 ID x 46" LONG	0327418	2
11	HOSE, HYDRAULIC - 3/8 ID x 78" LONG - 90°	0327484	1
12	HOSE, HYDRAULIC - 3/8 ID x 63" LONG - 90°	0327482	1
13	HOSE, HYDRAULIC - 3/8 ID x 73" LONG - 90°	0327483	1
14	HOSE, HYDRAULIC - 3/8 ID x 55" LONG - 90°	0327480	1

HYDRAULIC HOOK-UP
DIRECT. VALVE, CHECK VALVE &
REAR DROP CYLINDERS

TRANZ-FORMER MODEL 09092 - DWG #23

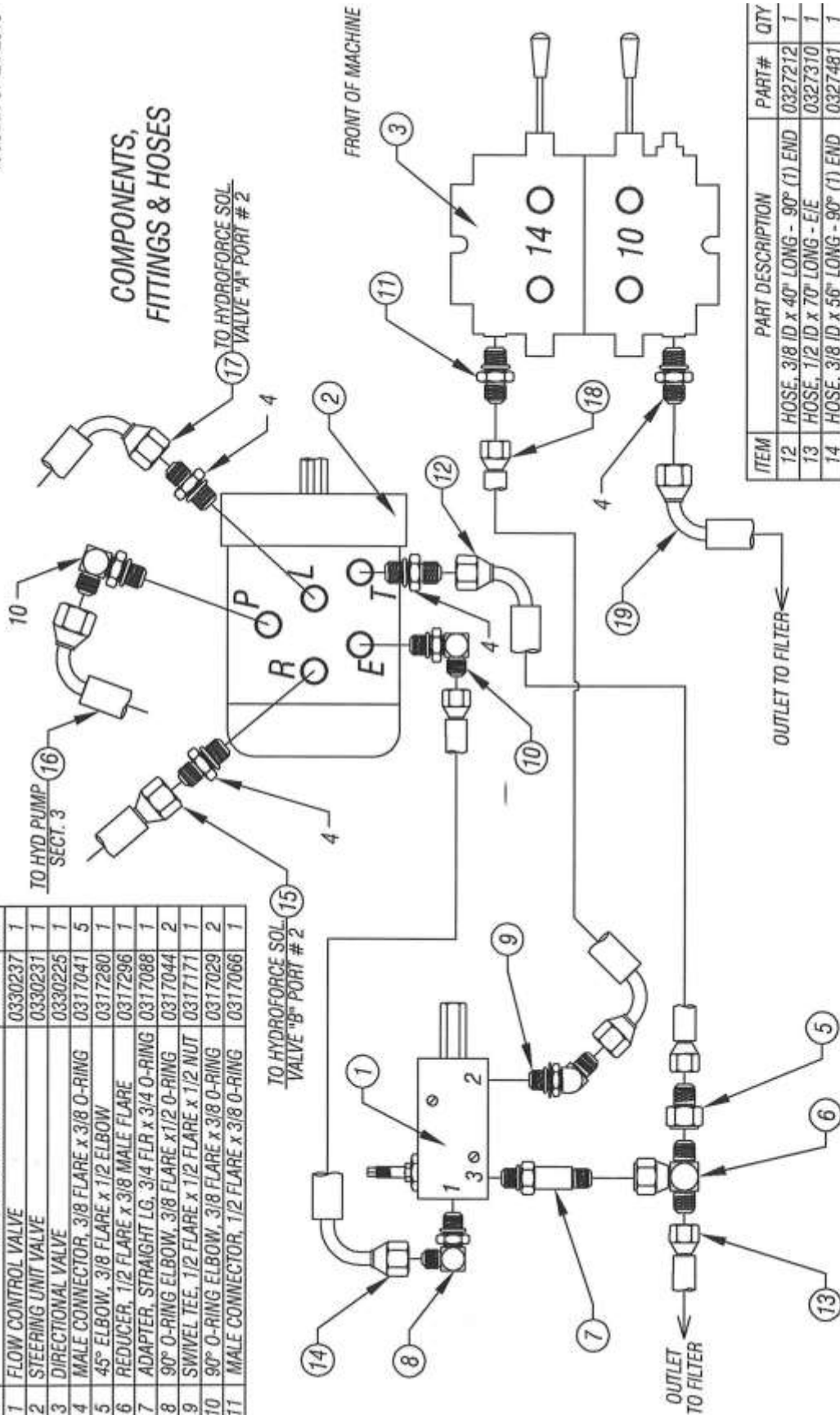


NOTE:
FITTINGS & HOSES NOT IDENTIFIED,
SEE CHECK VALVE ON DWG #23

ITEM	PART DESCRIPTION	PART#	QTY
1	CYLINDER, HYD. LIFT FRONT WHEELS	0330233	2
2	DUAL PILOT CHECK VALVE	0330236	1
3	90° O-RING ELBOW, 3/8 FLR x 3/8 NPT	0317005	2
4	MALE CONNECTOR, 3/8 FLARE x 3/8 NPT	0317185	1
5	MALE RUN TEE, 3/8 FLR x 3/8 NPT x 3/8 FLR	0317323	1
6	SWIVEL RUN TEE, 3/8 FLR x 3/8 FLR x 3/8 NUT	0317257	1
7	HOSE, HYDRAULIC - 3/8 ID x 49" LONG E/E	0327475	1
8	HOSE, HYDRAULIC - 3/8 ID x 52" LONG E/E	0327476	1
9	HOSE, HYDRAULIC - 3/8 ID x 17" LONG x 90°	0327489	1
10	HOSE, HYDRAULIC - 3/8 ID x 8.75" LONG E/E	0327470	1

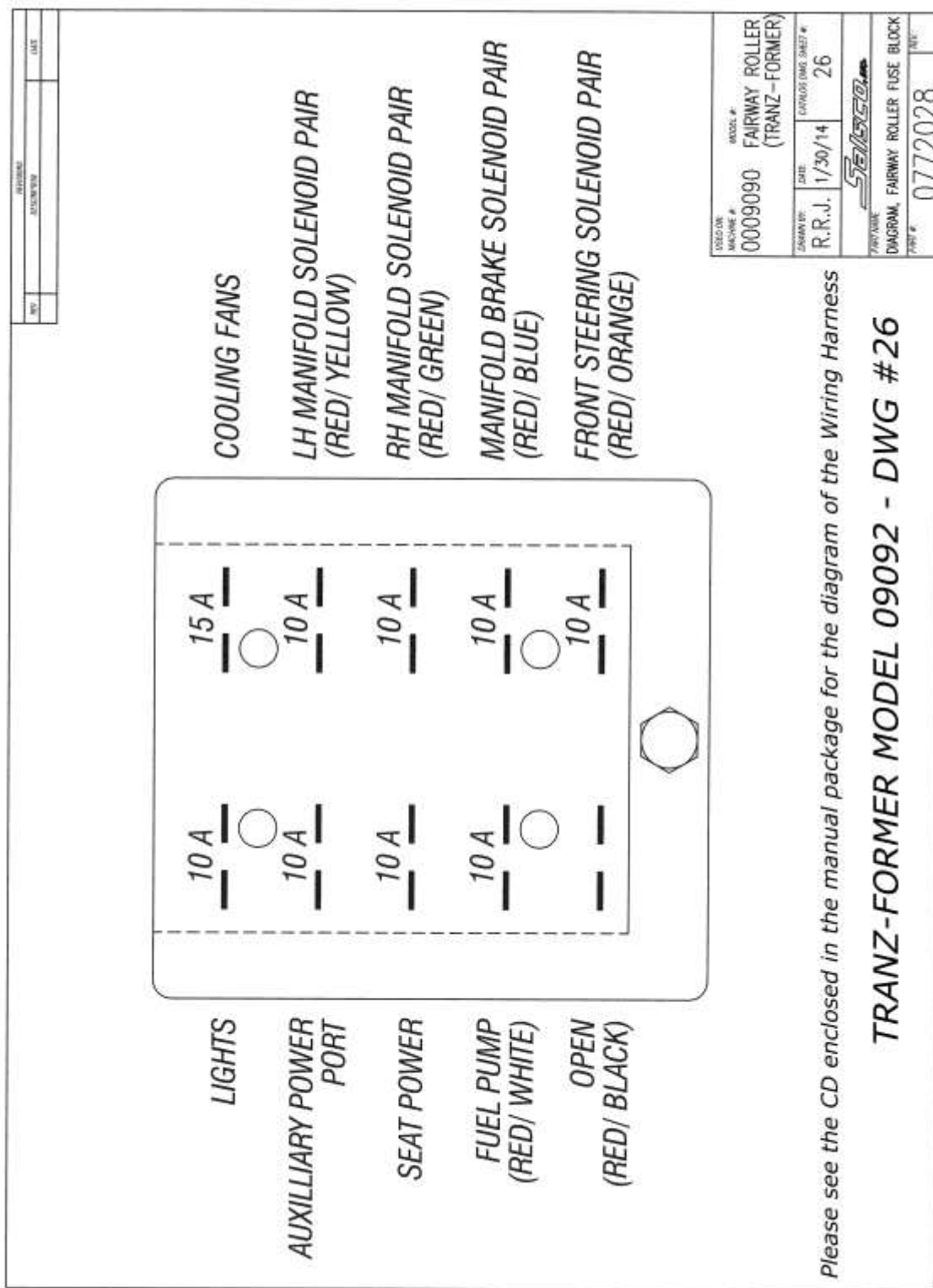
TRANZ-FORMER MODEL 09092 - DWG #24

ITEM	PART DESCRIPTION	PART #	QTY
1	FLOW CONTROL VALVE	0330237	1
2	STEERING UNIT VALVE	0330231	1
3	DIRECTIONAL VALVE	0330225	1
4	MALE CONNECTOR, 3/8 FLARE x 3/8 O-RING	0317041	5
5	45° ELBOW, 3/8 FLARE x 1/2 ELBOW	0317280	1
6	REDUCER, 1/2 FLARE x 3/8 MALE FLARE	0317296	1
7	ADAPTER, STRAIGHT LG. 3/4 FLR x 3/4 O-RING	0317088	1
8	90° O-RING ELBOW, 3/8 FLARE x 1/2 O-RING	0317044	2
9	SWIVEL TEE, 1/2 FLARE x 1/2 FLARE x 1/2 NUT	0317171	1
10	90° O-RING ELBOW, 3/8 FLARE x 3/8 O-RING	0317029	2
11	MALE CONNECTOR, 1/2 FLARE x 3/8 O-RING	0317066	1



ITEM	PART DESCRIPTION	PART #	QTY
12	HOSE, 3/8 ID x 40" LONG - 90° (1) END	0327212	1
13	HOSE, 1/2 ID x 70" LONG - E/E	0327310	1
14	HOSE, 3/8 ID x 56" LONG - 90° (1) END	0327481	1
15	HOSE, 3/8 ID x 26" LONG - 90° (1) END	0327479	1
16	HOSE, 3/8 ID x 81" LONG - 90° (1) END	0327485	1
17	HOSE, 3/8 ID x 26" LONG - 90° (1) END	0327333	1
18	HOSE, 3/8 ID x 34" LONG - 90° (1) END	0327102	1
19	HOSE, 1/2 ID x 110" LONG - 90° (1) END	0327473	1

HYDRAULIC HOOK-UP
AT FLOW CONTROL, STEERING UNIT
AND DIRECTIONAL VALVE
TRANZ-FORMER MODEL 09092 - DWG #25

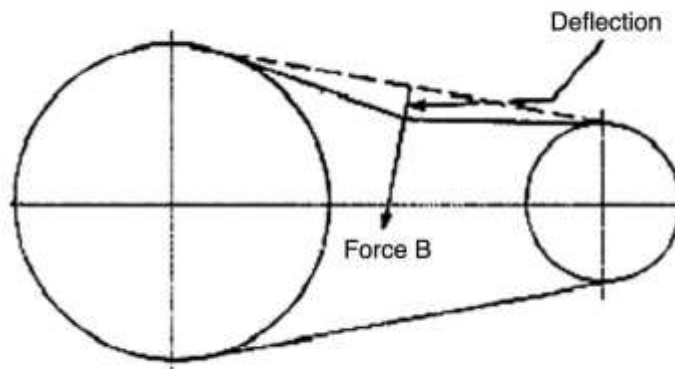


Below is a quick reference chart for various “Flat Head Cap Screws” and the torque recommendations.

VALUES ARE STATED IN FOOT POUNDS

BOLT SIZE	Thds Per Inch	SAE Grade 5	SAE Grade 8
1/4	20	10	14
	28	---	---
5/16	18	19	29
	24	---	---
3/8	16	33	47
	24	---	---
7/16	14	54	78
	20	---	---
1/2	13	78	119
	20	---	---
9/16	12	114	169
	18	---	---
5/8	11	154	230
	11	---	---
3/4	10	257	380
	10	---	---
7/8	9	382	600
	9	---	---
1	8	587	700
	8	---	---

Drive Belt Tension Measurement by Deflection



Deflection should be 3/8" when 8-12 lbs. push is applied at "B"

WARRANTY POLICY-GREENS ROLLERS

Please remember to complete and return your Warranty Card and Dealer Delivery Report. Warranty Claims will not be considered if your Warranty Card and Dealer Delivery Report has not been returned to Salsco.

Your Salsco Commercial or Turf Equipment product is a commercial type product and is normally manufactured and sold for commercial or industrial use. **Salsco will, for the original purchaser, for (5) years from the date of purchase (90 days if used for rental purposes) repair or replace, free of charge, any SALSCO part or parts found to be defective in material, workmanship or both.** Any transportation or shipping charges will be borne by the purchaser. If, during the warranty period stated above, the product does not function properly due to defect, simply contact Salsco and follow the Warranty Procedures included in this manual.

This warranty **does not** include:

- Incidental or consequential damages and is exclusive of any implied warranties.
- Normal maintenance parts, including, but not limited to hoses, chains, belts, filters, lubricants, etc.
- Parts or components, which are covered under the original manufacturer warranty, including, but not limited to engines, pumps, and motors.

WARRANTY PROCEDURE

In order for Salsco to consider your warranty claims in a timely manner you must follow the simple procedures listed below:

MACHINE OR PART FAILURE

- Call our service department for helpful instruction on how to correct or repair the problem. Preventive maintenance will also be suggested.
- When ordering parts for Warranty issues, you **MUST** retain possession of the old parts in question until notified with respect to returning the parts to Salsco or other disposition.
- Warranty Claims **MUST** be filed within 30-days from completion of the work performed. Contact our office for an electronic warranty claim form.
- Fill in all information requested on warranty claim form, a copy of which is included in this manual, (date of purchase, company name, address, etc.). List all parts used. Make sure part numbers are correct. You can obtain these from your manual. (include good description of problem; i.e. "leaking from spool" rather than "leaking").
- It is our goal to consider and reach a disposition on each Warranty Claim within 30-days from the date that it is received. Therefore it is important that you respond promptly to any request for further information. Claims with no response to inquiries will be closed as **"denied for lack of response"** 90-days from the date of request.
- Email, Fax or Send Warranty Claim form to our Warranty Department. – **Warranty on parts most often requires return of the parts that were replaced.** DO NOT DISCARD OLD PARTS UNTIL YOU HAVE RECEIVED A DETERMINATION AS TO WHETHER THESE PARTS MUST BE RETURNED.
- Our Warranty Department will contact and instruct you on how to return the Parts to Salsco on an RA #. Returns **MUST** be made within 30-Days from issuance of RA #. **FREIGHT CHARGES ON RETURN OF PARTS IS THE RESPONSIBILITY OF THE CUSTOMER.** Normal pre-delivery adjustments are not covered under warranty. Labor Warranties are based on reasonable time allowances as determined by Salsco, Inc. **TRAVEL TIME IS NOT REIMBURSED UNDER THE WARRANTY POLICY.**
- Be sure to put the RA form inside the box that you are shipping back; also be sure to put on the outside of the box "Return of Goods" and the RA #.
- Ship returns via a traceable method such as UPS Ground Service. Be sure that the shipment is insured for the appropriate value. If uninsured parts are lost, we cannot issue a credit.

PLEASE NOTE: ***Warranty forms should be filled out completely.***

PREVENTIVE MAINTENANCE IS YOUR BEST INSURANCE AGAINST EQUIPMENT FAILURE. BE SURE TO READ THE MANUAL, ESPECIALLY THE MAINTENANCE, OPERATING AND CAUTION SECTIONS.

**SALSCO, INC., 105 School House Rd.
Cheshire, CT 06410
800-872-5726, 203-271-1682
203-271-2596 (Fax)
sales@salsco.com, www.salsco.com**

SALSCO WARRANTY CLAIM FORM

SALSCO, INC. 105 SCHOOL HOUSE RD. CHESHIRE, CT 06410		PHONE: 203-271-1682, 800-872-5726 FAX: 203-271-2596 EMAIL: s.clark@salsco.com WEB: www.salsco.com
END OWNER		PHONE:
NAME:		FAX:
EMAIL:		
ADDRESS:		
PURCHASED FROM:		PHONE:
NAME:		FAX:
EMAIL:		
ADDRESS:		
EQUIP/WARRANTY INFO: (MUST BE COMPLETE)		
PURCHASE DATE:	INV #:	DATE FAILED:
MODEL #:	SERIAL #	REPAIR DATE:
HRS USED:		
WARRANTY CLAIM/WORK ORDER #:		
WAS A SALSCO RETURN AUTH. # ISSUED FOR REPAIRS OR RETURN OF PARTS:		<input type="checkbox"/> YES <input type="checkbox"/> NO
IF YES, RA #:		
PROBABLE CAUSE OF FAILURE:		
SALSCO WARRANTY CLAIM FORM - Continued		

WORK PERFORMED/COMMENTS ON REPAIR:					
SHOP LABOR RATE:			SUBMITTED BY:		
TOTAL LABOR HRS TO REPAIR:			PRINTED NAME:		
SALSCO PART #: DESCRIPTION:	QTY	PRICE EACH	TOTAL	INVOICE #:	
<p>FILL IN ALL INFORMATION REQUESTED ON WARRANTY CLAIM FORM. INCOMPLETE FORMS CANNOT BE PROCESSED & WILL BE RETURNED. LIST ALL PARTS USED. MAKE SURE PART NUMBERS ARE CORRECT. ANY PARTS THAT YOU BELIEVE TO BE DEFECTIVE OR ANY PARTS THAT BREAK SHOULD BE RETAINED FOR POSSIBLE INSPECTION UNTIL AFTER THE WARRANTY HAS BEEN PAID OR PART HAS BEEN RETURNED. INV. # NEEDS TO BE INCLUDED ON WARRANTY CLAIM.</p>					
OFFICE USE ONLY					
DATE REC'D:		DLR. DEL REPORT ON FILE:		YES	NO
CUST ID:		WARRANTY CLAIM ON FILE:		YES	NO
SALSCO WC:		PARTS TOTAL:			
SALSCO RA:		LABOR TOTAL:			
DATE APPROVED:		TOTAL APPROVED:			
DATE REJECTED:		REJECTED DATE:			
PROCESSED BY:		REASON:			

Salsco, Inc.

105 School House Rd.
Cheshire, CT 06410
203-271-1682

sales@salsco.com
www.salsco.com

800-872-5726
203-271-2596 (Fax)

DEALER DELIVERY REPORT

MODEL			SERIAL NO			
DEALER		CITY	STATE		ZIP	
PURCHASER (Last Name or Company)	(First Name)	(Middle Name)	ADDRESS	CITY	STATE	ZIP

The undersigned dealer warrants that the above-described machine was carefully inspected, adjusted and prepared for delivery before delivery to the purchaser; that both the operation and maintenance of the machine were explained to the purchaser; and that a copy of the Owner's Instruction Manual were given to the purchaser and his attention called to Our Warranty and any operating instructions included in the manual and caution notes.

Date

Dealer

Sign By

Phone

The undersigned purchaser certifies that the operation and maintenance of the above-described machine have been explained to him; acknowledges receipt of a copy of the Owners's Instruction Manual and Our Warranty Policy printed in said Instruction Manual and Caution Notes. I also understand that it is my responsibility to explain and make Salsco manuals available to new operators.

Date

Purchaser

Sign By

Phone

Email

FACTORY COPY WHITE - DEALER'S COPY YELLOW - OWNER'S COPY PINK

SERIAL #

MODEL NO.

SALSCO LIMITED WARRANTY CARD

1. DATE PURCHASED: _____
2. PURCHASER: _____
3. PURCHASER ADDRESS: _____

4. EMAIL ADDRESS: _____
5. DEALER: _____
6. DEALER ADDRESS: _____
7. WILL THIS EQUIPMENT BE USED COMMERCIALY? ☐ YES ☐ NO
8. DID DEALER SERVICE THIS EQUIPMENT AND INSTRUCT YOU IN ITS CARE AND SAFE OPERATION ? ☐ YES ☐ NO
9. DID YOU RECEIVE AN "OPERATION & SERVICE MANUAL" AND SAFETY PAMPHLET? ☐ YES ☐ NO

NOTICE

SIGNED _____

Purchaser

IMPORTANT: THIS CARD MUST BE FILLED OUT COMPLETELY AND MAILED TO THE FACTORY WITHIN 10 DAYS OF PURCHASE DATE, OR YOUR LIMITED WARRANTY WILL BE VOIDED.

WHITE - DEALER**YELLOW - OWNER****CARD - FACTORY**

SERVICE RECORD

If kept properly, this schedule will help track problems in the future.

[illegible]

MODEL # _____ S/N _____

DATE PURCHASED: _____



105 School House Road
Cheshire, CT 06410 U.S.A.
800-872-5726, 203-271-1682, 203-271-2596 (Fax)
sales@salsco.com, www.salsco.com