

**Quality of Workmanship
Innovative Design
Built to Last!**



TRANZ-FORMER EHA, 5-G - Model 09127 Operators And Parts Manual



MANUFACTURER OF OUTDOOR POWER EQUIPMENT

Products for Turf & Lawncare, Rental, Construction, Tree Care, Wood Processing, Nursery & Farm Industries

3-1/2" - 18" Capacity, Gas, Diesel, & PTO Wood/Brush Chippers - Slab Chippers
Gas, Electric & Tow Behind Rollers - Tranz-Former Roller - CRV Core Recovery Vehicle
Mini-Paver - Mini-Track Paver - Cobra Curbers - Scorpion Router - Concrete Paver
Chipper Shredder Vacuums - Tailgate & Truckloader Vacuums
9 cu. yds. - 50 cu. yds. Per Hour, Electric, PTO & Diesel Powered Shaving Mills



105 Schoolhouse Road
Cheshire, CT 06410 U.S.A.
800-872-5726 (Toll Free), 203-271-1682, 203-271-2596 (Fax)
www.salsco.com, sales@salsco.com

TABLE OF CONTENTS

TRANZ-FORMER, EHA 5G, MODEL 09127-N (37HP B&S, E.F.I. ENGINE PACKAGE)

COVER & TABLE OF CONTENTS.....	Pages 1-2
STATEMENT OF FACT	Page 3
FEATURES & SPECIFICATIONS	Page 4
READ BEFORE OPERATING/OPERATOR SAFETY.....	Page 5
OPERATOR INSTRUCTIONS	Page 6
SERVICE/MAINTENANCE.....	Page 7
SAFETY DECALS	Page 8
PARTS DIAGRAMS	Pages 9-32
CROSS CONTAMINATION PREVENTION KIT OPTION.....	Pages 13 - 14
WIRING DIAGRAM	Pages 33-34
TORQUE CHART.	Page 35
SERVICE INTERVAL SCHEDULE	Page 36
SERVICE RECORD.....	Page 39

SALSCO, INC.

105 Schoolhouse Road
Cheshire, CT 06410 USA
800-872-5726, 203-271-1682
203-271-2596 (fax)
www.salsco.com, sales@salsco.com

STATEMENT OF FACT

You have just purchased the highest quality, most dependable, roller on the market today. This unit has the ability to meet exact standards and perform for years with minimum downtime. **HOWEVER**, it cannot read nor will it understand this manual no matter how long you leave it on top of the machine.

It is your responsibility to read and understand this manual; it is also your responsibility to be certain this information is passed along to anyone who is expected to operate this equipment. Should you choose not to read, understand and pass along the information provided you, please expect equipment failure and possible injuries to persons around this equipment.

For the safety of the operator, it is imperative that this manual is carefully read and understood.

Once you have read this manual, it is your responsibility to be sure that all new operators read and understand this manual, especially all cautions stated.

As a manufacturer of equipment, we have a responsibility to design a safe piece of equipment. **NOTE:** The important safeguards and instructions in this manual are not meant to cover all possible conditions and situations that may occur. It must be understood that common sense, caution, and care are factors, which cannot be built into any product. These factors must be supplied by the person(s) caring for and operating this equipment.

TRANZ-FORMER, EHA 5-G - SPECIFICATIONS	
ENGINE:	37HP Briggs & Stratton, E.F.I. Electric Start, Gas Engine.
FUEL TANK:	Two (2) - 6 gallon CARB approved canister fuel tanks.
CONTROLS:	Forward/Reverse, Transport and Rolling.
HOUR METER:	Standard.
BATTERY	12 Volt, 850CCA automotive type.
SEAT	Air-ride forward/reverse slide adjustable seat with armrests.
STEERING SYSTEM:	Hydrostatic.
CRUISE CONTROL	0 - Full MPH, adjustable by operator.
STEERING WHEEL:	14" tilt adjustable steering wheel.
LIGHT PACKAGE:	Four (4) LED flood lights. 2-front mounted, 2-rear mounted.
ROTARY BRUSH SYSTEM:	Standard on all three rolls.
MIRRORS:	Two (2) rear view mirrors.
MAIN FRAME:	Square tubing over steel plate. Full watertight belly pan.
DRIVE ROLLS:	Three (3), 10-3/4" diameter x 40" long, beveled. Can be filled with water for extra weight. Machined to within two thousandths of an inch concentricity.
TRACTION DRIVE:	Hydraulic pump to three (3) hydrostats - 1 to each roll. Chain drive from hydraulic motors to rolls. #60HD chain & sprockets.
CLIMBING TRACTION:	All rolls are driven.
BRAKES:	Hydraulic & mechanical.
HYDRAULIC COMPONENTS:	<u>Hoses:</u> SAE JIC hose ends & fittings. 3,000 P.S.I. working, 12,000 P.S.I. burst. <u>Motors:</u> Five (5) Eaton Motors. <u>Pump:</u> One (1) three section tandem Hydro-Gear pump.
HYDRAULIC TANK:	15 gallon steel hydraulic tank, with cooling fins.
ELECTRIC HYDRAULIC CYLINDERS:	Six (6) double action. Two (2) 4" stroke, two (2) 6" stroke, two (2) 8" stroke.
ROLLING SWATH:	10'.
TURNING RADIUS:	Approximately 35".
SPEED:	0 - 10 MPH.
GROUND PRESSURE:	10 P.S.I. without water, 11.8 P.S.I. with water.
TIRE/WHEEL ASSEMBLIES:	Spindle axle, 18.5 x 8.5-8, 6-Ply tubeless tires.
GUARDS/DECALS:	All moving parts guarded. Full set of safety decals.
PAINT:	Orange, polyester powder coat paint provides excellent outdoor weatherability and offers protection against ultraviolet discoloration. All parts painted separately.
OPTIONS:	Rear Wheel Extender Kit; Cool Top With Fan; Cool Top Without Fan.
TRANSPORT DIMENSIONS:	10' long X 5'3" Wide X 7'11" High - 2400 lbs.
ROLLING DIMENSIONS:	10' long X 10' Wide X 7'2" High - 2400 lbs.

All Specifications & Options Subject to Change Without Notice.

READ BEFORE OPERATING THIS UNIT! OPERATOR SAFETY!

Understand the intended use of this equipment. It is designed to smooth grass playing surfaces. It is not an all-terrain vehicle and should not be used as such!

1. Walk around the machine looking for damage or leaks. If there are no hydraulic leaks, do not open the hydraulic tank cap. If it hasn't leaked, the level will be fine.
2. Check engine oil & fuel level.
3. Climb on the seat, adjust the seat, and **FASTEN THE SEAT BELT**
4. **BE SURE** the roll/transport switch is in the roll position.
5. Quick look around to be sure no one is near the machine.
6. Start the engine. This machine has a **FUEL INJECTED ENGINE**, so **THERE IS NO CHOKE**.
7. Once the engine starts, raise the throttle to about ½ throttle.
8. Look at the rolls. They should be oriented as if the machine was going straight. This can be achieved by turning the steering wheel until the front roll appears to be straight.
9. Now press the lower button to lower the front and rear wheels.
 - a. WITH ROLLS DOWN & WHEELS UP, THE UNIT WILL ROLL & SMOOTH GRASS PLAYING SURFACES
 - b. WITH ROLLS UP & WHEELS DOWN, THE UNIT CAN BE TRANSPORTED ON WHEELS TO THE NEXT PLAYING SURFACE TO BE ROLLED.
 - c. **ALWAYS** COME TO A COMPLETE STOP BEFORE TRANSFORMING FROM TRANSPORT TO ROLL OR VICE VERSA.
10. **NOTE:** The raise/lower wheels and wings in and out buttons should be pressed one at a time and not in a jogging way. Just press the button until the function is complete. Jogging these buttons will cause a safety circuit breaker to trip. Should this happen, relax for two minutes and try again.
11. Once the wheels are lowered and the machine is in the transport position, press the wings "in" button to retract the roller wing into a travel position. **NOTE: BE SURE** no one is standing near the wings.
12. Now put the Roll/Transport switch into the transport position.
13. By pressing the foot pedal forward, the machine will move forward. **NOTE:** The further you press the pedal, the faster the machine will go.
14. To stop or reverse travel of the machine, simply depress the pedal next to the forward pedal. This will slow, stop and reverse the machine.
15. **IT IS IMPORTANT TO NOTE** when operating this machine that the engine should be run at full RPM and the machine speed should be controlled by depressing travel pedals.
16. **ONCE YOU ARRIVE AT THE LOCATION TO BE ROLLED**, press the Wings Out Button until wings are both fully extended. Again, be sure no one is standing near the machine.
17. Press the raise wheels button. **BE SURE** the wheels are raised fully.
18. Put the Roll/Transport switch to roll position.
19. You are ready to roll.
20. **CRUISE CONTROL:**
 - a. Should only be used by an experienced operator.
 - b. **NEVER** use cruise control when rolling the greens. Only use on an open area such as fairways.
 - c. Moving forward in roll or transport, move the cruise control lever to the "on" position.
 - d. Press the pedal forward and you should feel the cruise control engage.
 - e. **NOTE:** There is a safety release pedal on the left side of the forward pedal and must be pulled towards the operator for the cruise control to work. **PRESS THE CRUISE DEACTIVATION PEDAL TO RELEASE THE CRUISE CONTROL.** (See the picture of the pedals on page 7 of this manual for the location of the pedal.)

BE AWARE of terrain & surroundings! Potholes or steep hills could become a danger. **ALWAYS** traverse hills "up & down" **NEVER** across hills.

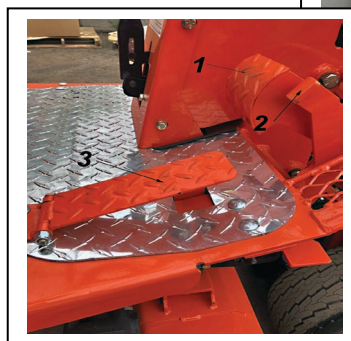
OPERATOR INSTRUCTIONS - Continued

The Salsco Tranz-Former Roller will be sent via common carrier. It could arrive in a box truck or an open flatbed. **Use caution when preparing to take the roller off of the trailer.** Make sure the trailer is level. If you do not have a dock, arrange to have a flatbed truck to back up to the trailer. **(DO NOT USE RAMPS!)** Before driving the unit off of the trailer, **disconnect any retainer devices** securing the roller to the trailer.

- A. **MAKE SURE** the roller has gas and oil. The oil filter is accessible from the engine opening on the left side of the roller. The gas tanks are on top behind the driver's seat.
- B. **MAKE SURE** the wheels are down and the rolls are not touching the floor.
- C. **BECOME FAMILIAR** with the roller controls.

Engine Control Panel:

1. The Transport/Roll switch is used to change from power to the wheels or power to the rolls. This switch should be in the Roll position when the unit is not in use.
2. Throttle - **NOTE:** Run at full throttle
3. Engine Key - Starting
4. Accessory Outlet
5. Light Switch (4 LED lights for early morning rolling)
6. Hour Meter
7. Top Control Panel is used to Raise/Lower Rolls and Wheels.



Pedals:

1. Accelerator Pedal-Forward
2. Cruise Control Deactivation Pedal
3. Reverse Pedal

When you are ready to transport: Put the wheels down, bring rolls in, move switch to transport, and press the accelerator pedal.

When you are ready to start rolling...Move the rolls out: Raise the wheels to the up position, then move the switch to the roll position. You are now ready to roll.

Cruise control operation: To activate, press the speed control pedal to bring the unit to the desired speed then move the lever to the on position the pedal will lock.

To cancel cruise control: Either move the cruise control handle to the off position and tap the Accelerator Pedal (#1) or tap the Cruise Control Deactivation Pedal (#2). Now you will be able to operate the Accelerator Pedal and cruise will be off.

NOTE: IF FOR ANY REASON THE CRUISE DOESN'T RELEASE, PRESS THE PEDAL TO THE RIGHT OF THE SPEED CONTROL, AND THE LOCK PIN WILL RELEASE.

SERVICE & MAINTENANCE INSTRUCTIONS

1. Check all hydraulic hoses **DAILY**, or before each scheduled use, for wear and any signs of chaffing. **REMINDER:** Drive motor hoses should be treated as wear items and should be replaced on a yearly basis.
2. Check all fittings for any signs of leaking **DAILY**, or before each scheduled use.
3. Check all grease fittings as listed below on a **WEEKLY** basis, and grease as necessary. Add grease until grease leaks slightly from fitting.
 - a. Bearings on roll housings – qty. 6
 - b. Pivot bearing on main housing – qty. 6
4. Check the engine manufacturer's manual for service and maintenance instructions.
5. Fill hydraulic tank to 4-6" below filler cap. Be sure to tighten cap until cap seals.
6. After approximately 1 WEEK of use, and then every 2 WEEKS thereafter, check drive chains...one on each side on roller drive motor. Pivot motor to tighten chain. **NOTE:** Check and adjust the tension of all drive motor chains on a regular basis.
 - a. There is a pusher bolt to aid in adjusting and must be adjusted along with the motor.
 - b. The chain should have $\frac{3}{8}$ " play. **NEVER** adjust the chain tight with no play.
7. Wash machine. Keep it clean. Should rust form on rolls, simply drive the unit on a rough area until rolls are clean.
8. **Oil & Filter Type** – It has been determined that your Salsco Tranz-Former will perform better by using a 25 micron filter. Salsco recommends using non-detergent hydraulic oil or 10W-40 equivalent. The oil should have a viscosity rating of at least 122 SSU. While this is not a necessity, it will improve the overall performance of your machine. Salsco is now using this filter and hydraulic oil on all of our machines using hydraulics. Hydraulic oil should be changed after the first 150 hours, and every 500 hours thereafter.
9. There is a belly pan with three drain plugs. One plug allows you to drain the wash water out of the pan. Another is for engine oil; and the third is for hydraulic oil. **NOTE:** Be careful to remove the connected drain plug as the engine and hydraulic drains have plugs in the same area.
10. Check the rotary brushes to be sure they are in proper adjustment.
11. Check the roller chains to be sure they are in proper adjustment.

SAFETY IS A PRIME CONCERN AT SALSCO. THE SAFETY DECALS ON YOUR MACHINE ARE HIGHLY VISABLE AND A CONSTANT REMINDER TO ALL OPERATORS. REPLACEMENT SAFETY DECALS MAY BE OBTAINED BY CALLING SALSCO @ 1-800-872-5726, OR THE DEALER IN YOUR AREA.

CAUTION/DANGER DECALS



DANGER - HOT EXHAUST: Use extreme caution around this area. Hot parts can cause severe burns. Do not touch engine while operating or just after stopping.



CAUTION: Never operate without covers in place.



DANGER: Rotating parts can cause severe injury. Stay away from moving parts while in operation.



DANGER: Keep away.



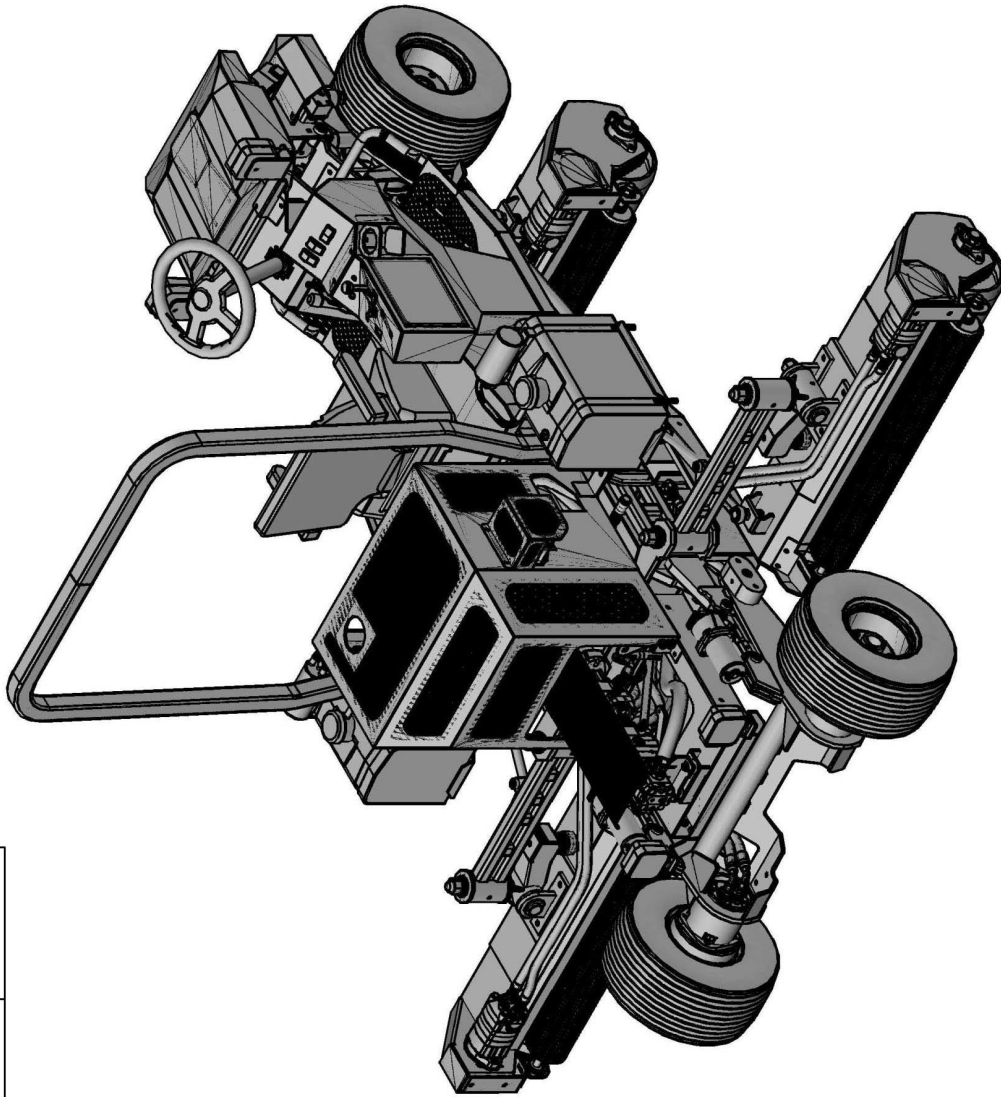
WARNING: Chain drive must be maintained daily.



WARNING: Hydraulic Oil Requirements.

REV	DESCRIPTION	DATE

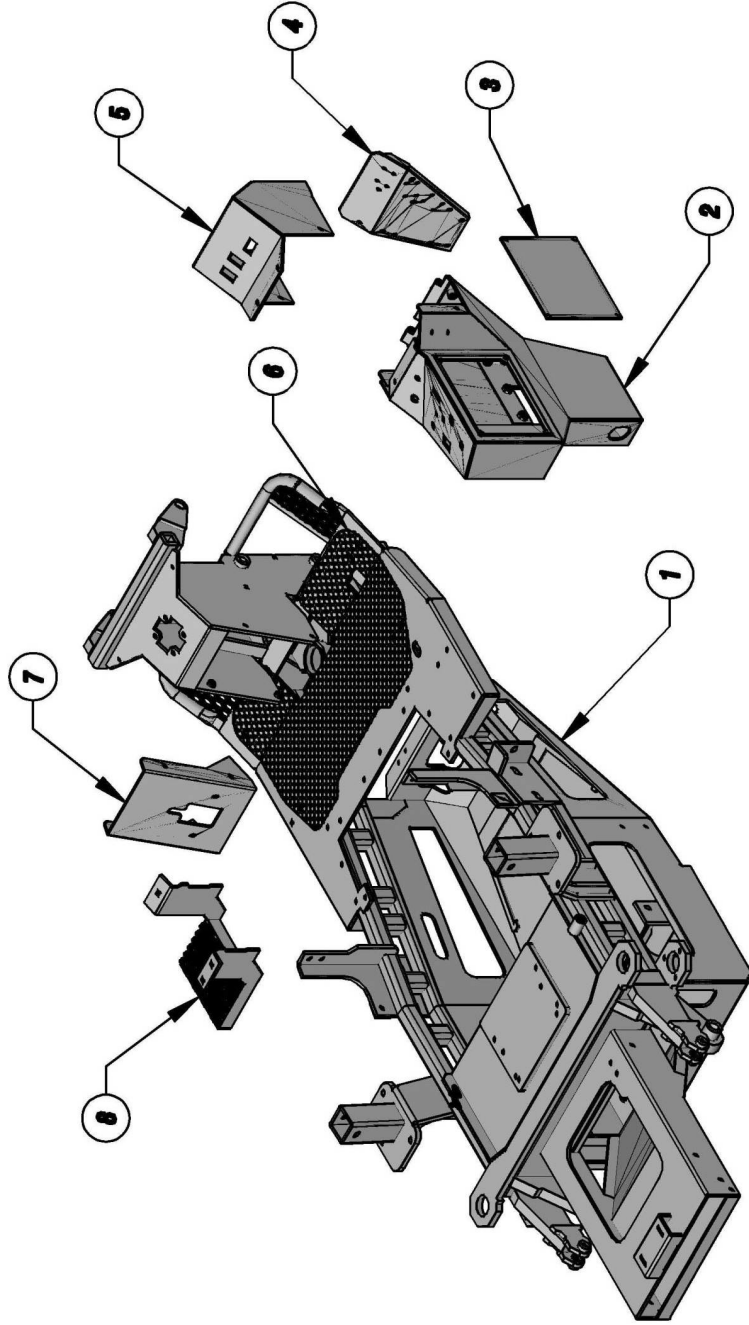
ITEM	DESCRIPTION	PART No
1	TRANZ-FORMER-EHA 5G	0009125



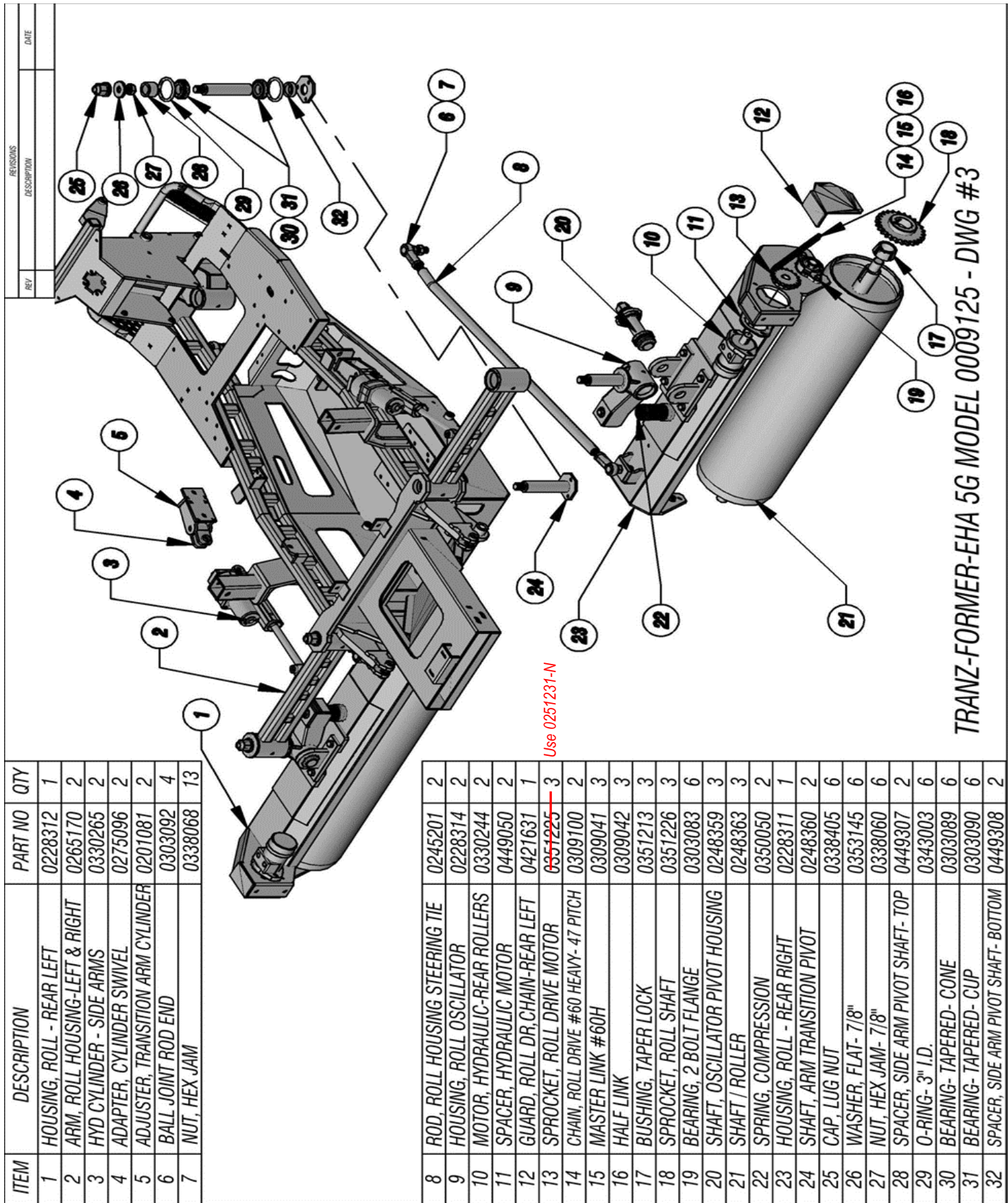
TRANZ-FORMER-EHA 5G MODEL 0009125 - DWG # 1
ISSUED: 04-24-2018

REVISIONS		DATE
REV	DESCRIPTION	

ITEM	DESCRIPTION	PART NO	QTY
1	FRAME, FAIRWAY ROLLER	0219576	1
2	HOUSING, OPERATOR CONTROL ENCLOSURE	0228345	1
3	DOOR, OPERATOR CONTROL ENCLOSURE	0460105	1
4	PANEL, ELECTRICAL COMPONENT MOUNTING	0489041	1
5	DOOR, ACCESS	0260108	1
6	PLATE, FAIRWAY ROLLER DECK STEP	0490223	1
7	COVER, STEERING MOTOR MOUNT	0471458	1
8	STEP, FAIRWAY ROLLER	0273041	1



TRANZ-FORMER-EHA 5G MODEL 0009125 - DWG #2



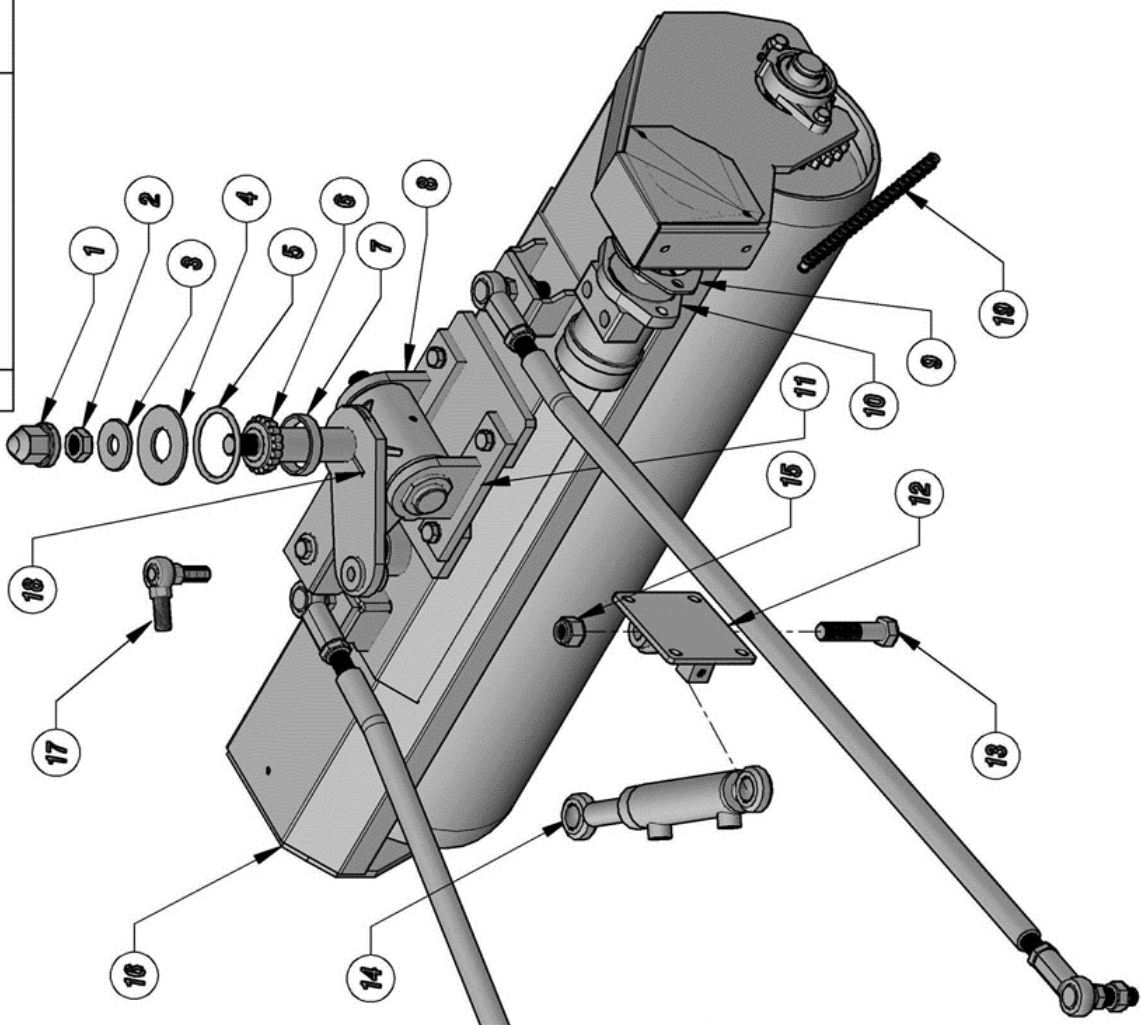
TRANZ-FORMER-EHA 5G MODEL 0009125 - DWG #3

ITEM	DESCRIPTION	PART NO	QTY
1	HOUSING, ROLL - REAR LEFT	0228312	1
2	ARM, ROLL HOUSING-LEFT & RIGHT	0265170	2
3	HYD CYLINDER - SIDE ARMS	0330265	2
4	ADAPTER, CYLINDER SWIVEL	0275096	2
5	ADJUSTER, TRANSITION ARM CYLINDER	0201081	2
6	BALL JOINT ROD END	0303092	4
7	NUT, HEX JAM	0338068	13

8	ROD, ROLL HOUSING STEERING TIE	0245201	2
9	HOUSING, ROLL OSCILLATOR	0228314	2
10	MOTOR, HYDRAULIC-REAR ROLLERS	0330244	2
11	SPACER, HYDRAULIC MOTOR	0449050	2
12	GUARD, ROLL DR,CHAIN-REAR LEFT	0421631	1
13	SPROCKET, ROLL DRIVE MOTOR	0351225 0351225-N	3
14	CHAIN, ROLL DRIVE #60 HEAVY- 47 PITCH	0309100	2
15	MASTER LINK #60H	0309041	3
16	HALF LINK	0309042	3
17	BUSHING, TAPER LOCK	0351213	3
18	SPROCKET, ROLL SHAFT	0351226	3
19	BEARING, 2 BOLT FLANGE	0303083	6
20	SHAFT, OSCILLATOR PIVOT HOUSING	0248359	3
21	SHAFT / ROLLER	0248363	3
22	SPRING, COMPRESSION	0350050	2
23	HOUSING, ROLL - REAR RIGHT	0228311	1
24	SHAFT, ARM TRANSITION PIVOT	0248360	2
25	CAP. LUG NUT	0338405	6
26	WASHER, FLAT- 7/8"	0353145	6
27	NUT, HEX JAM- 7/8"	0338060	6
28	SPACER, SIDE ARM PIVOT SHAFT- TOP	0449307	2
29	O-RING- 3" I.D.	0343003	6
30	BEARING- TAPERED- CONE	0303089	6
31	BEARING- TAPERED- CUP	0303090	6
32	SPACER, SIDE ARM PIVOT SHAFT- BOTTOM	0449308	2

Use 0251231-N

REV	DESCRIPTION	DATE



ITEM	DESCRIPTION	PART NO	QTY
1	CAP, LUG NUT	0338405	3
2	JAM NUT	0338060	3
3	FLAT WASHER	0353145	3
4	WASHER	0453117	3
5	O-RING, 3" ID	0343003	6
6	CONE BEARING	0303089	6
7	BEARING CUP	0303090	6
8	OSCIL., PIVOT HSG - FRONT	0276821	3
9	SPACER, HYD. MOTOR	0449050	1
10	MOTOR, HYD. (FRONT ROLL)	0330238	1
11	OSCIL., PIVOT HSG - REAR	0276822	3
12	MOUNT, STEERING CYLINDER	0291074	1
13	HEX HEAD CAP SCREW- 3/4-10	0346609	1
14	HYD. CYLINDER	0330279	1
15	NUT, LOCK- 3/4-10	0338106	1
16	HOUSING, ROLL - FRONT	0228313	1
17	BALL JOINT ROD END LINKAGE	0303092	2
18	HSG-ROLL OSCIL CYL MOUNTG	0228360	1
19	CHAIN, ROLL DRIVE #60 HEAVY- 45 PITCH	0309101	1

0330267-N: Seal kit for hydraulic motor (0330238-N), front roll

TRANZ-FORMER-EHA 5G MODEL 0009125 - DWG #4

ITEM	DESCRIPTION	DWG NO	QTY
1	COLLAR, BRUSH CLAMPING	0211064	4
2	PULLEY, BRUSH DRIVE	0242276	2
3	SHAFT, ROLLER BRUSH	0248421	2
5	MOUNT, ROLLER BRUSH SHAFT DRIVE- RIGHT & FRONT	0276928	2
7	MOUNT, ROLLER BRUSH SHAFT OLDER- RIGHT & FRONT	0490366	2
9	MOUNT, ROLLER BRUSH DRIVE- RIGHT & FRONT	0276932	2
10	BEARING INCRP- 80P- 80P- (INCLUDES LOCKING COLLAR)	0303053	4
11	BEARING FLANGETTE- FOR 0510" BEARING	0303054	8
13	SPACER, ROLL BRUSH SHAFT OLDER- FRONT & RIGHT REAR	0488176	2
14	BRUSH, OPEN COIL	0336142	2
15	SCREW, HEX HEAD CAP- 3/8-16 x 1" LONG	0346249	16
16	NUT, LOCK- 3/8-16 NYLOCK	0338102	12
17	WASHER, FLAT- 3/8" SAE	0353113	16
18	WASHER, SPLIT LOCK- 3/8"	0353016	4
19	V-BELT- SINGLE- 28" LG. *	0304200	2

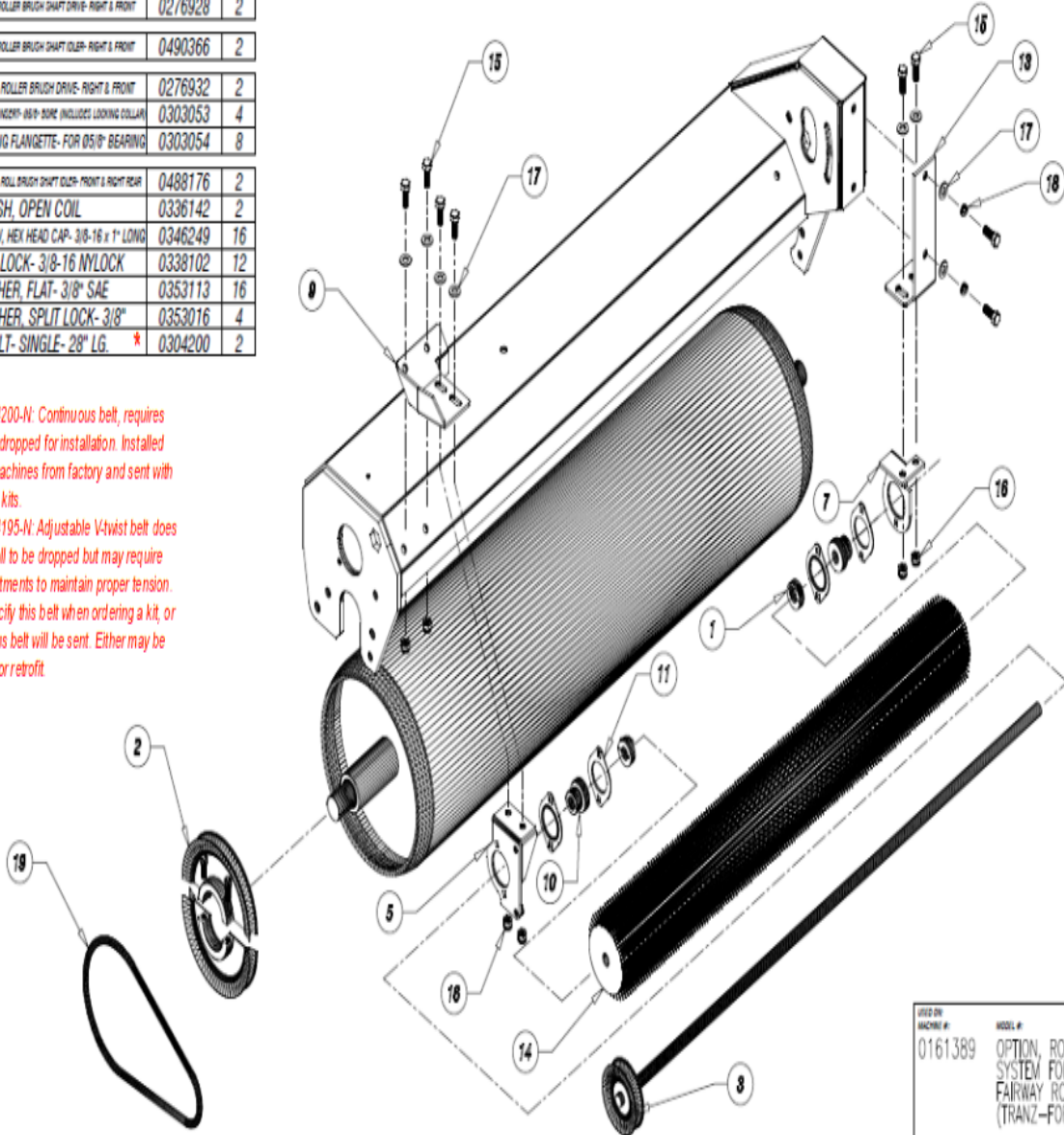
Correction 7-5-2022

REVISIONS		
REV	DESCRIPTION	DATE
A	CHANGED MOUNTING BRACKETS TO USE FLANGETTE STYLE BEARINGS.	11/16/16 R.R.J.
B	PULLEYS CHANGED TO NOVA SPLIT STEEL TYPE.	3/4/20 R.R.J.

***NOTE:**

Belt 0304200-N: Continuous belt, requires roll to be dropped for installation. Installed with all machines from factory and sent with all retrofit kits.

Belt 0404195-N: Adjustable V-twist belt does require roll to be dropped but may require link adjustments to maintain proper tension. Must specify this belt when ordering a kit, or continuous belt will be sent. Either may be ordered for retrofit.



NOTES:

-RIGHT REAR AND FRONT ROLL

PART OF VENDOR:		PART OF SUB-ASSY:		DRAWN BY:	DATE:	USED BY:	MODEL #:
---		---		SALSCO	3/9/15	0161389	OPTION, ROTARY BRUSH SYSTEM FOR 0009090 FAIRWAY ROLLER (TRANZ-FORMER)
MATERIAL SIZE:				DPA:		PART NAME:	
SEE ITEM DESCRIPTIONS				2		ROTARY BRUSH SYSTEM	
PART #:						REV.:	
0161389						SHEET 1 OF 2 B	

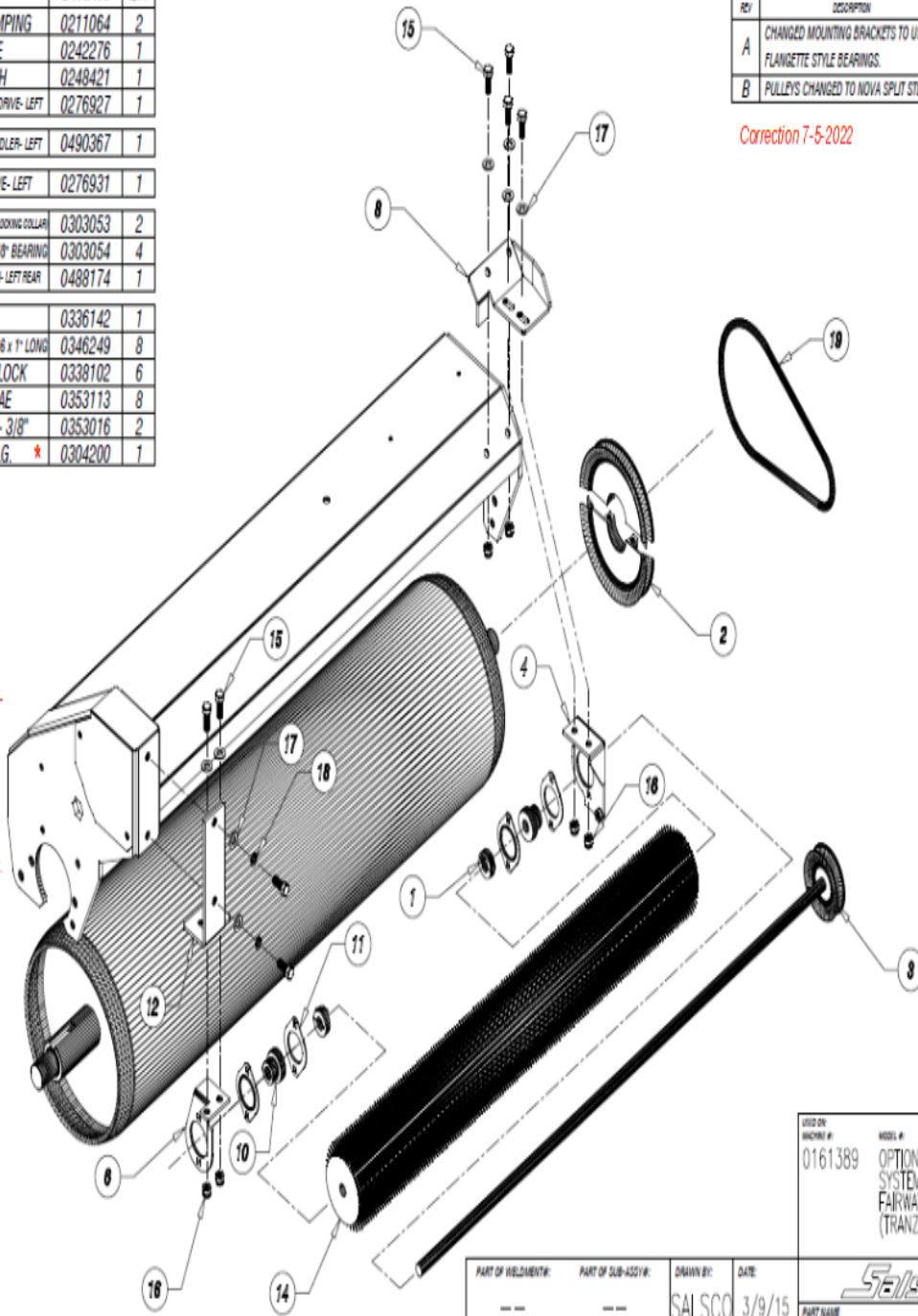
ITEM	DESCRIPTION	DWG NO	QTY
1	COLLAR, BRUSH CLAMPING	0211064	2
2	PULLEY, BRUSH DRIVE	0242276	1
3	SHAFT, ROLLER BRUSH	0248421	1
4	MOUNT, ROLLER BRUSH SHAFT DRIVE- LEFT	0276927	1
6	MOUNT, ROLLER BRUSH SHAFT IDLER- LEFT	0490367	1
8	MOUNT, ROLLER BRUSH DRIVE- LEFT	0276931	1
10	BEARING INCRP- 06P- BORE (INCLUDES LOCKING COLLAR)	0303053	2
11	BEARING FLANGETTE- FOR 05/0" BEARING	0303054	4
12	BRACKET, ROLL BRUSH SHAFT IDLER- LEFT REAR	0488174	1
14	BRUSH, OPEN COIL	0336142	1
15	SCREW, HEX HEAD CAP- 3/8-16 x 1" LONG	0346249	8
16	NUT, LOCK- 3/8-16 NYLOCK	0338102	6
17	WASHER, FLAT- 3/8" SAE	0353113	8
18	WASHER, SPLIT LOCK- 3/8"	0353016	2
19	V-BELT- SINGLE- 28" LG. *	0304200	1

*** NOTE:**

Belt 0304200-N Continuous belt, requires roll to be dropped for installation.

Installed with all machines from factory and sent with all retrofit kits.

Belt 0404195-N Adjustable V-twist belt does require roll to be dropped but may require link adjustments to maintain proper tension. Must specify this belt when ordering a kit, or continuous belt will be sent. Either may be ordered for retrofit.



REVISIONS		
REV	DESCRIPTION	DATE
A	CHANGED MOUNTING BRACKETS TO USE FLANGETTE STYLE BEARINGS.	11/16/16 R.R.J.
B	PULLEYS CHANGED TO NOVA SPLIT STEEL TYPE.	3/4/20 R.R.J.

Correction 7-5-2022

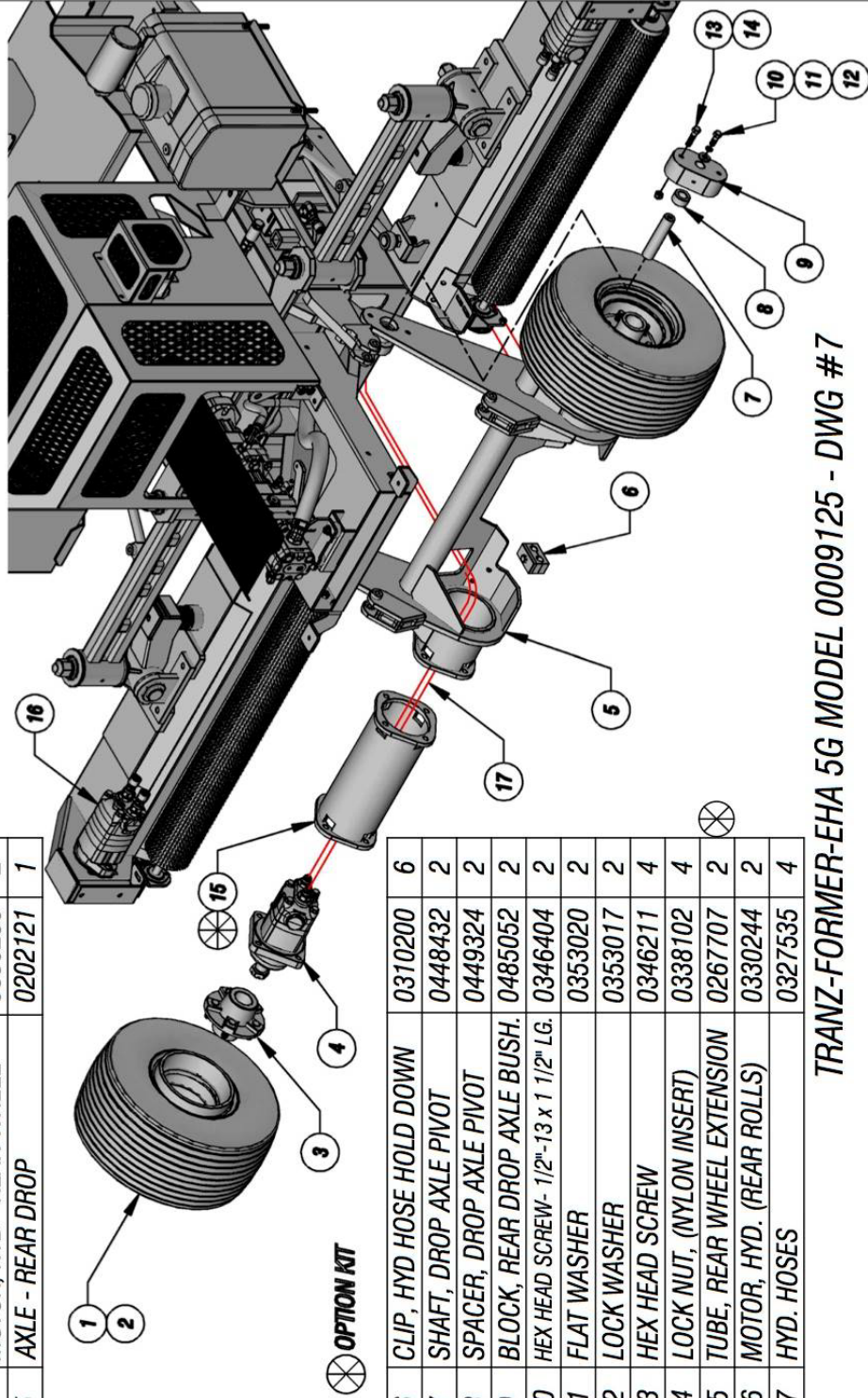
NOTES:
-LEFT REAR ROLL

USED ON MACHINE #	MODEL #
0161389	OPTION, ROTARY BRUSH SYSTEM FOR 0009090 FAIRWAY ROLLER (TRANZ-FORMER)

PART OF WELDMENT:	PART OF SUB-ASSY:	DRAWN BY:	DATE:
--	--	SALSCO	3/9/15
MATERIAL SIZE		PART NAME	
SEE ITEM DESCRIPTIONS		ROTARY BRUSH SYSTEM	
PART #			REV:
0161389 SHEET 2 OF 2			B

REV.	DESCRIPTION	DATE

ITEM	DESCRIPTION	PART No	QTY
1	TIRE & WHEEL ASSY - MODIFIED	0154153	4
2	BRG KIT, LUG KIT, CAP NUTS	0303068	4
3	HUB	0329100	4
4	MOTOR, HYD - REAR WHEEL	0330256	2
5	AXLE - REAR DROP	0202121	1



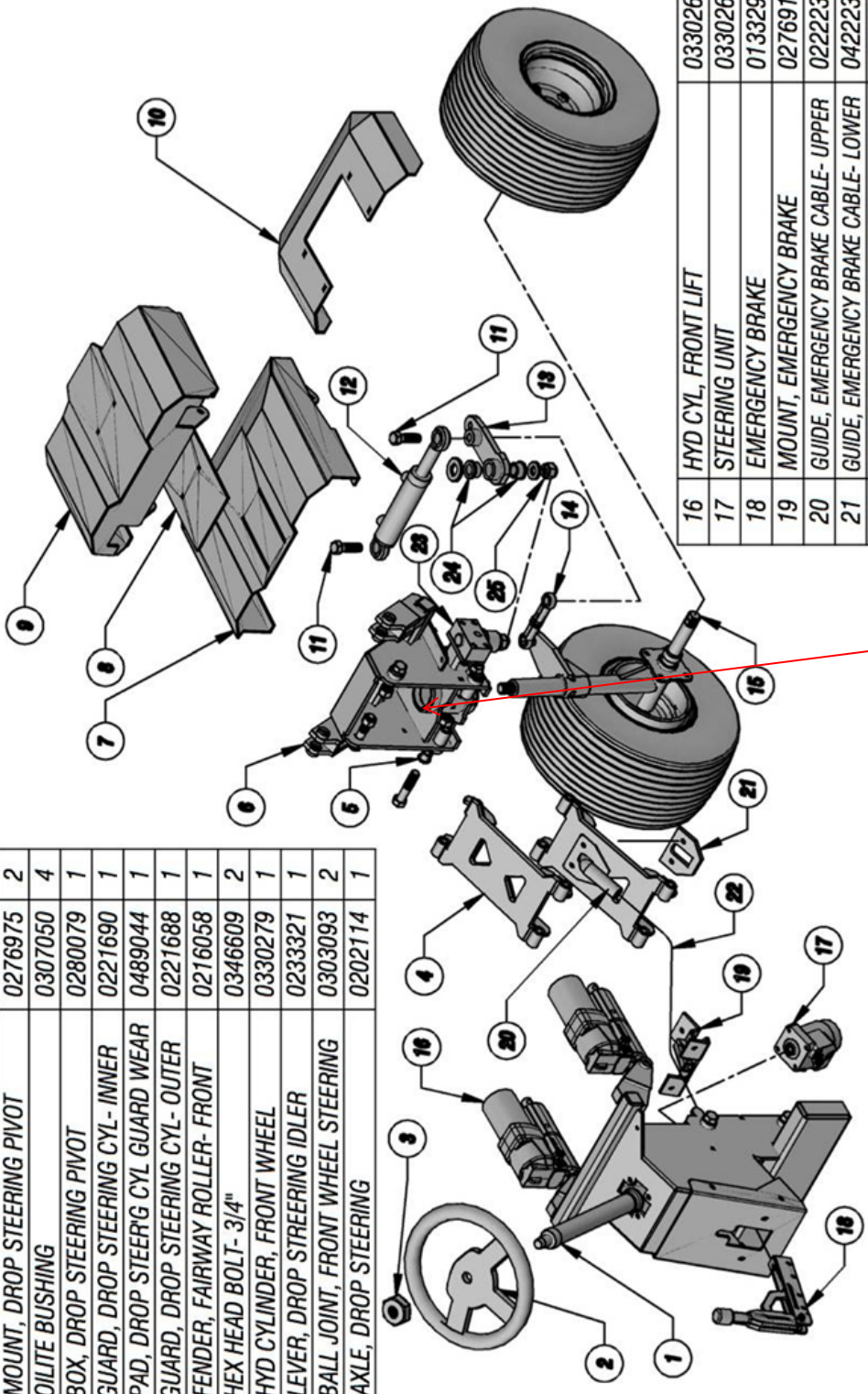
⊗ **OPTION KIT**

6	CLIP, HYD HOSE HOLD DOWN	0310200	6
7	SHAFT, DROP AXLE PIVOT	0448432	2
8	SPACER, DROP AXLE PIVOT	0449324	2
9	BLOCK, REAR DROP AXLE BUSH.	0485052	2
10	HEX HEAD SCREW - 1/2" - 13 x 1 1/2" LG.	0346404	2
11	FLAT WASHER	0353020	2
12	LOCK WASHER	0353017	2
13	HEX HEAD SCREW	0346211	4
14	LOCK NUT, (NYLON INSERT)	0338102	4
15	TUBE, REAR WHEEL EXTENSION	0267707	2
16	MOTOR, HYD. (REAR ROLLS)	0330244	2
17	HYD. HOSES	0327535	4

TRANZ-FORMER-EHA 5G MODEL 0009125 - DWG #7

REV	DESCRIPTION	DATE

ITEM	DESCRIPTION	PART NO	QTY
1	STEERING COLUMN	0330230	1
2	STEERING WHEEL	0354139	1
3	STEERING WHEEL JAM NUT	0338076	1
4	MOUNT, DROP STEERING PIVOT	0276975	2
5	OILITE BUSHING	0307050	4
6	BOX, DROP STEERING PIVOT	0280079	1
7	GUARD, DROP STEERING CYL- INNER	0221690	1
8	PAD, DROP STEERG CYL GUARD WEAR	0489044	1
9	GUARD, DROP STEERING CYL- OUTER	0221688	1
10	FENDER, FAIRWAY ROLLER- FRONT	0216058	1
11	HEX HEAD BOLT- 3/4"	0346609	2
12	HYD CYLINDER, FRONT WHEEL	0330279	1
13	LEVER, DROP STEERING IDLER	0233321	1
14	BALL JOINT, FRONT WHEEL STEERING	0303093	2
15	AXLE, DROP STEERING	0202114	1



16	HYD CYL, FRONT LIFT	0330264	2
17	STEERING UNIT	0330261	1
18	EMERGENCY BRAKE	0133299	1
19	MOUNT, EMERGENCY BRAKE	0276914	1
20	GUIDE, EMERGENCY BRAKE CABLE- UPPER	0222236	1
21	GUIDE, EMERGENCY BRAKE CABLE- LOWER	0422238	1
22	CABLE, EMERGENCY BRAKE	0408045	1
23	BLOCK, DROP STEERING IDLER PIN	0285062	1
24	BUSHING, FLANGE OILITE	0307066	2
25	NUT, NYLON LOCK- 3/4"-10	0338106	1

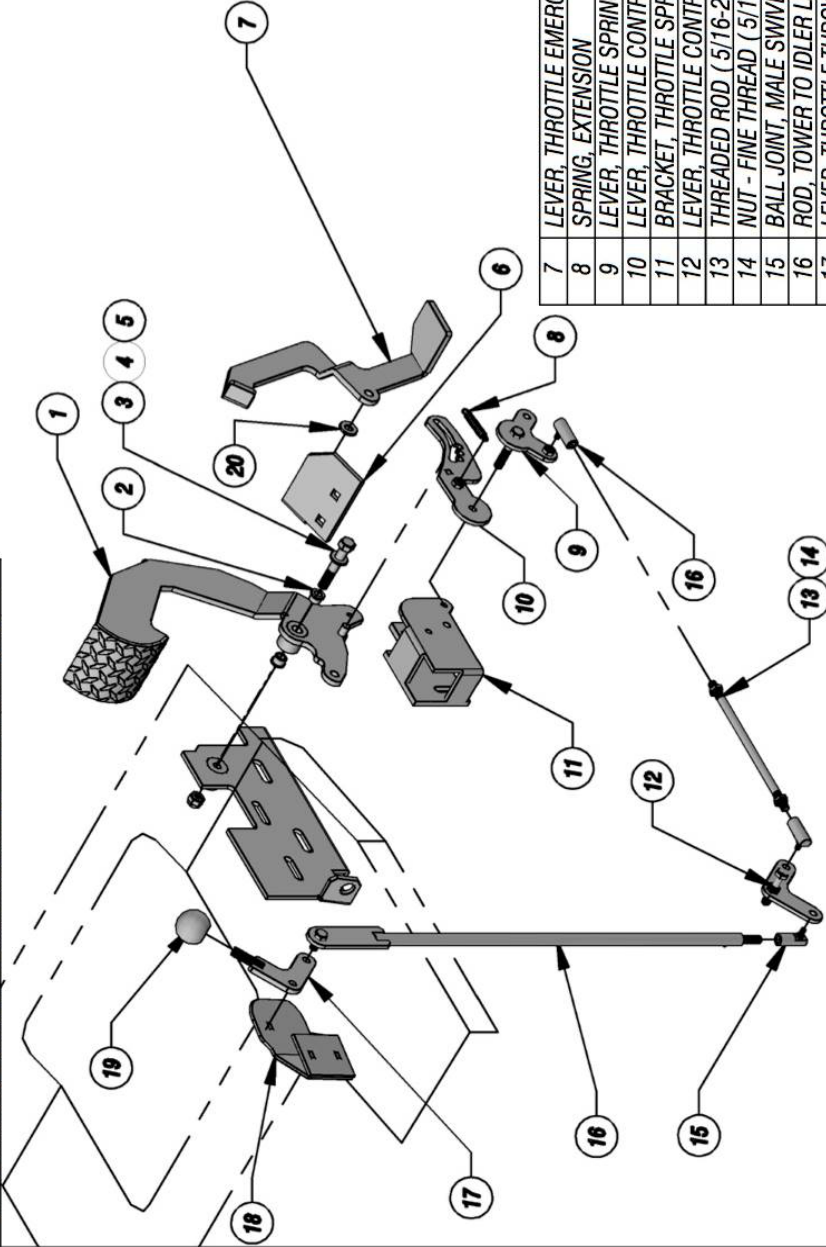
TRANZ-FORMER-EHA 5G MODEL 0009125 - DWG # 8

- (1) 0453117-N: Washer, Flat Punched 1-9/16" Id X 3-1/2" Od X 1/8"
- (1) 0353106-N: 3/4" USS Flat Washer Gr 8
- (1) 0338060-N: 7/8-14" Jam Nut
- (1) 0338405-N: Lug Nut Cap, Chrome

- (2) 0303089-N: Roller Bearing, GGR, HP11, Tranz-Formers & Roll-N-Go's
- (2) 0303090-N: Roller Bearing Cup, GGR, HP11, Tranz-Formers & Roll-N-Go's
- (2) 0343003-N: O-Ring 3" ID X 3-3/8" OD X 3/16"

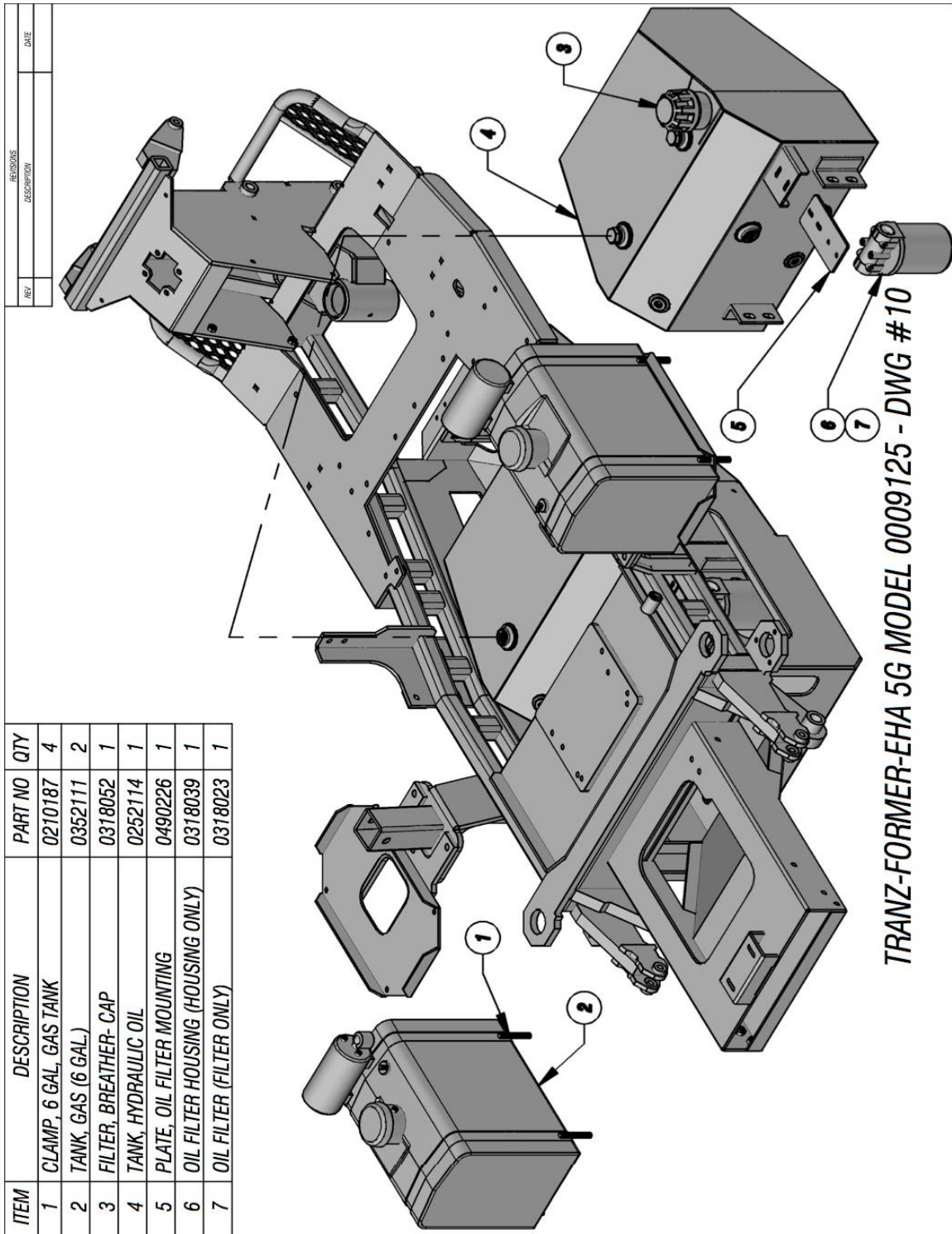
REV	DESCRIPTION	DATE

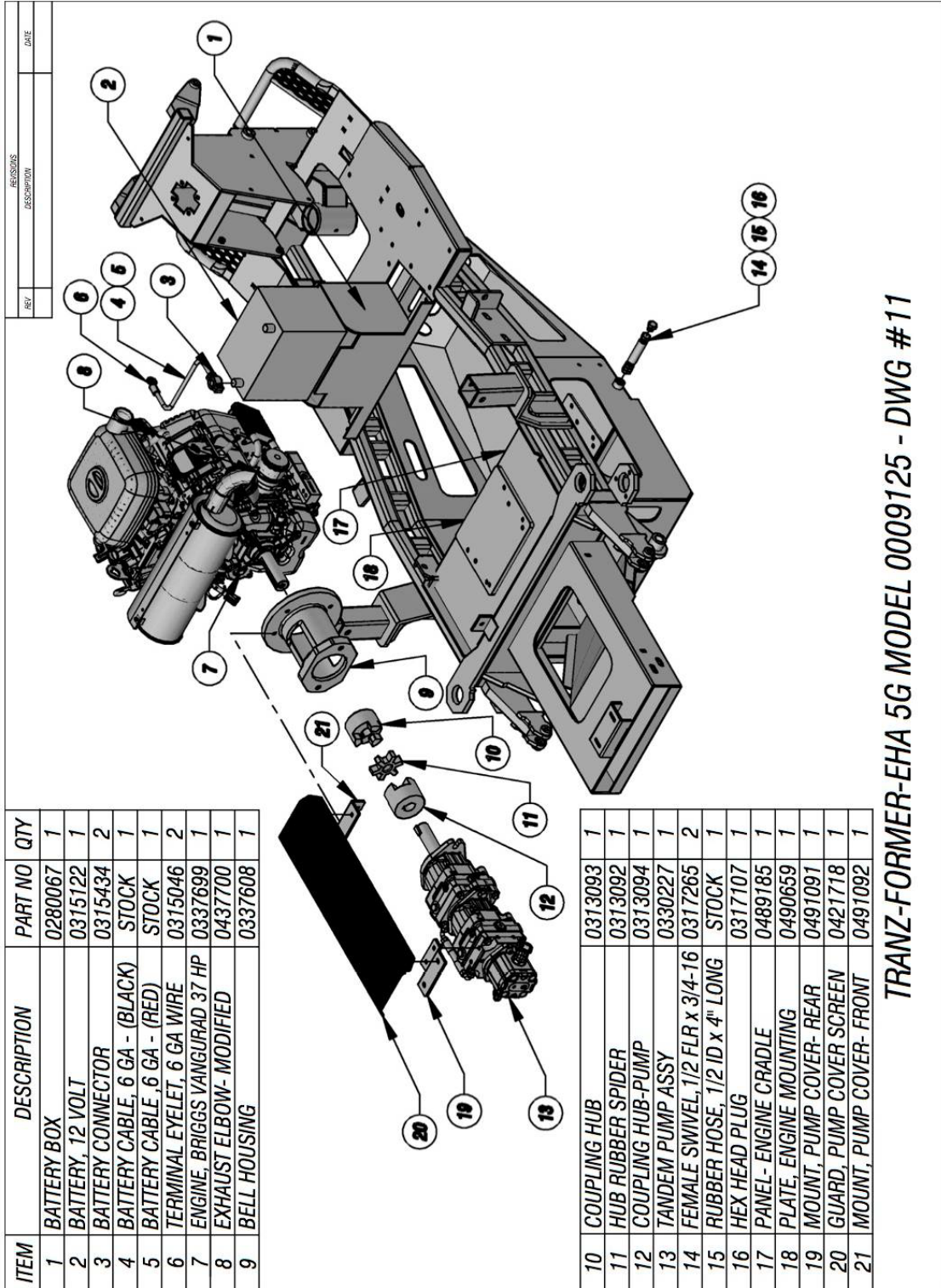
ITEM	DESCRIPTION	PART NO	QTY
1	PEDAL FOOT	0268035	1
2	BUSHING, FLANGED - OILITE	0303020	3
3	BOLT, HEX HEAD- 3/8"	0346208	1
4	LOCK NUT (NYLON INSERT) - 3/8"-16	0338102	1
5	WASHER, FLAT	0353102	1
6	BRACKET, THROTTLE QUICK DISCONNECT LEVER	0488141	1



7	LEVER, THROTTLE EMERGENCY RELEASE	0433288	1
8	SPRING, EXTENSION	0350057	1
9	LEVER, THROTTLE SPRING	0233285	1
10	LEVER, THROTTLE CONTROL	0233309	1
11	BRACKET, THROTTLE SPRING	0288136	1
12	LEVER, THROTTLE CONTROL - MID	0233287	1
13	THREADED ROD (5/16-24 x 6 5/8" L.G.)	STOCK	1
14	NUT - FINE THREAD (5/16-24)	0338021	2
15	BALL JOINT, MALE SWIVEL	0336006	3
16	ROD, TOWER TO IDLER LEVER	0245203	1
17	LEVER, THROTTLE THROW	0233283	1
18	PLATE, THROTTLE / LEVER MOUNT	0290231	1
19	HAND KNOB, BLACK	0332005	1
20	WASHER, FLAT- 3/8"	0353102	1

TRANZ-FORMER-EHA 5G MODEL 0009125 - DWG #9

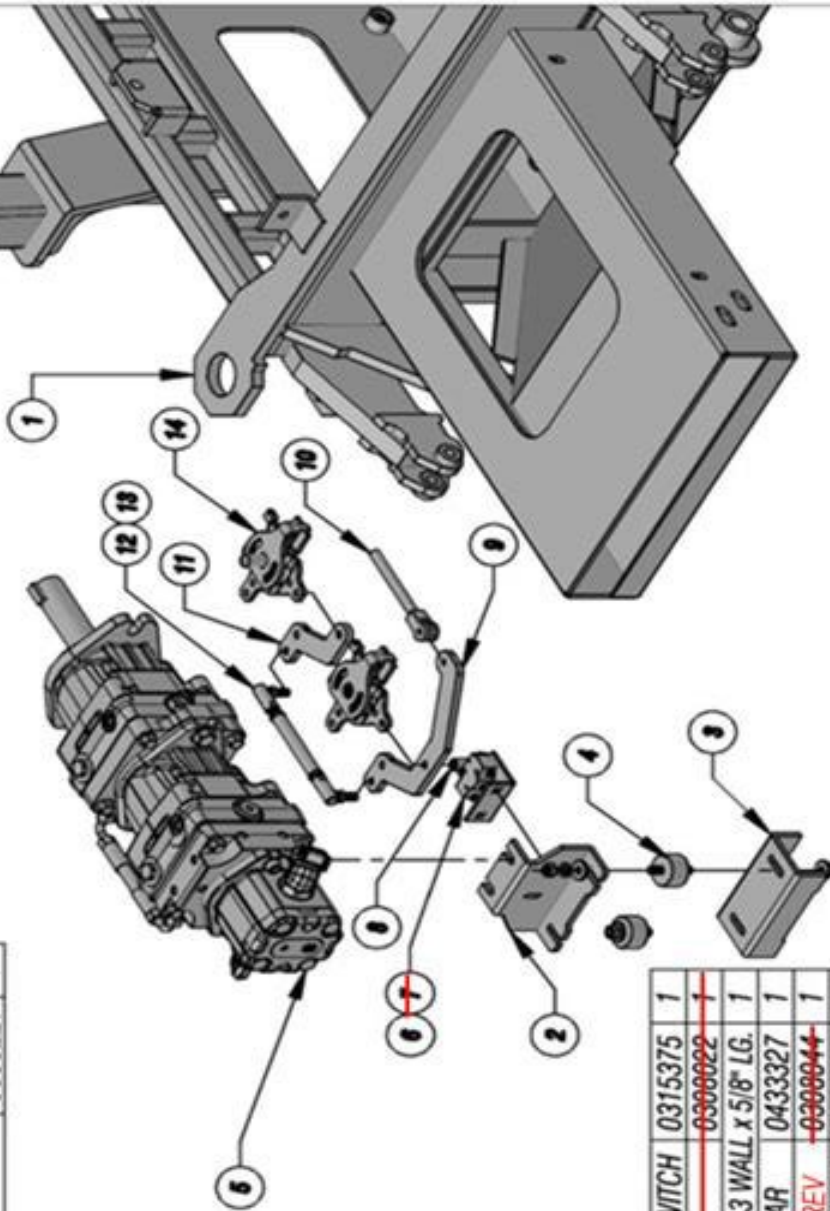




TRANZ-FORMER-EHA 5G MODEL 0009125 - DWG #11

REV.	DATE

ITEM	DESCRIPTION	PART NO	QTY
1	FRAME, FAIRWAY ROLLER BASE	0219576	1
2	BRACKET, HYD PUMP MTG - UPPER	0488275	1
3	BRACKET, HYD PUMP MTG - REAR	0488276	1
4	RUBBER MOUNT	0376250	2
5	TANDEM PUMP ASSY	0330227	1



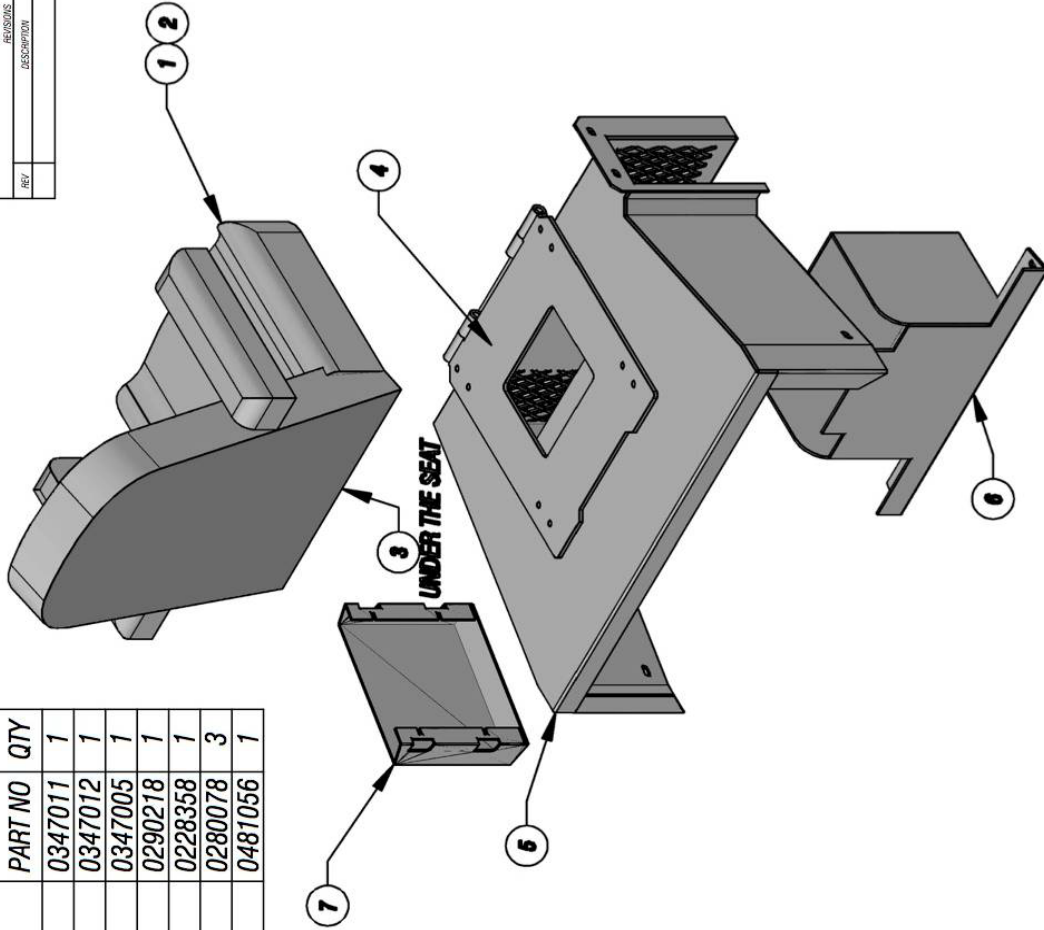
6	BRACKET, SNAP ACTION SWITCH	0315375	1
7	PUSH/PULL CABLE	0300022	1
8	D.O.M. TUBE- 1/2" O.D. x .083 WALL x 5/8" LG.	1	1
9	LEVER, TANDEM PUMP - REAR	0433327	1
10	CABLE PUSH-PULL / FWD-REV	0300044	1
11	LEVER, TANDEM PUMP - FRONT	0433278	1
12	PUMP LINKAGE	0145202	1
13	BALL JOINT, MALE SWIVEL	0336006	2
14	HYDRAULIC PUMP- TANDEM- HYDRO- GEAR	0330227	2

Use 0303022-N

TRANZ-FORMER-EHA 5G MODEL 0009125 - DWG #12

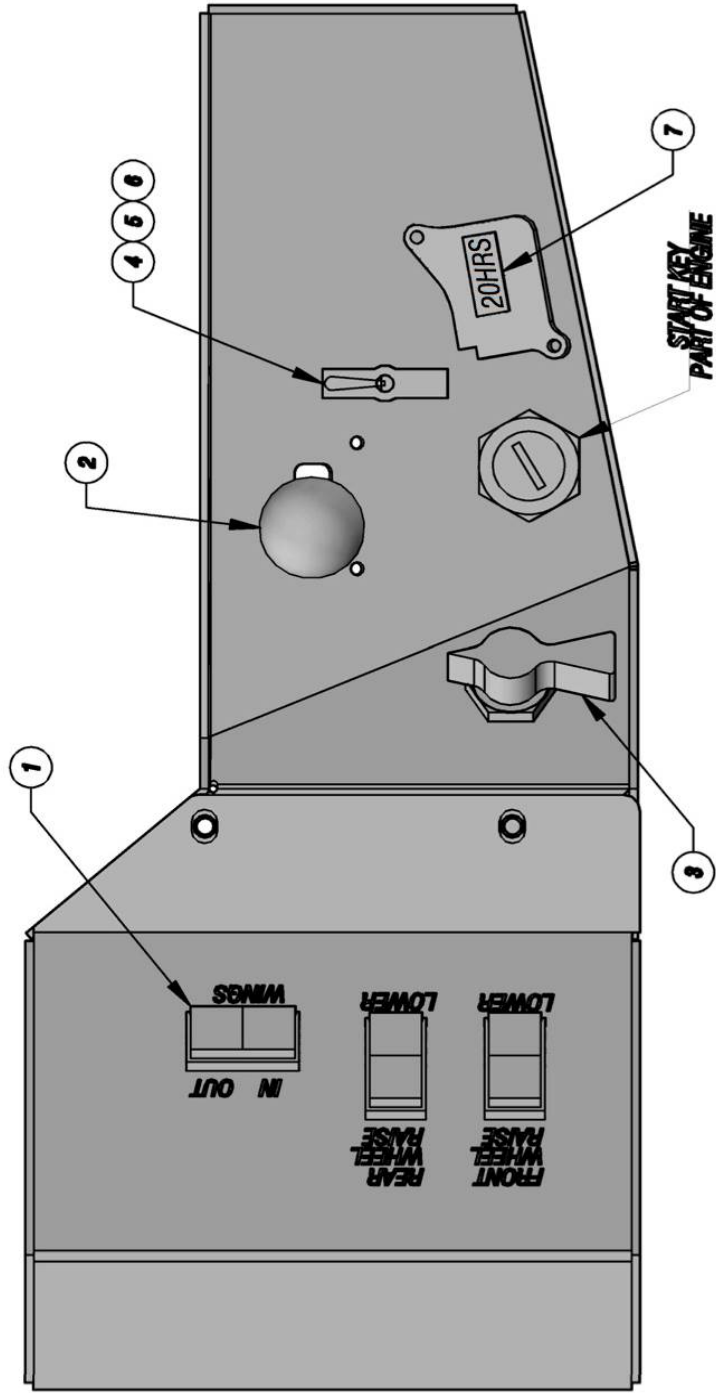
REV	DESCRIPTION	DATE

ITEM	DESCRIPTION	PART NO	QTY
1	SEAT	0347011	1
2	SEAT BELT	0347012	1
3	SLIDE ASSY KIT (FOR SEAT)	0347005	1
4	PLATE, SEAT MOUNTING	0290218	1
5	HOUSING, SEAT	0228358	1
6	BOX, BATTERY	0280078	3
7	HOLDER, CLIPBOARD	0481056	1



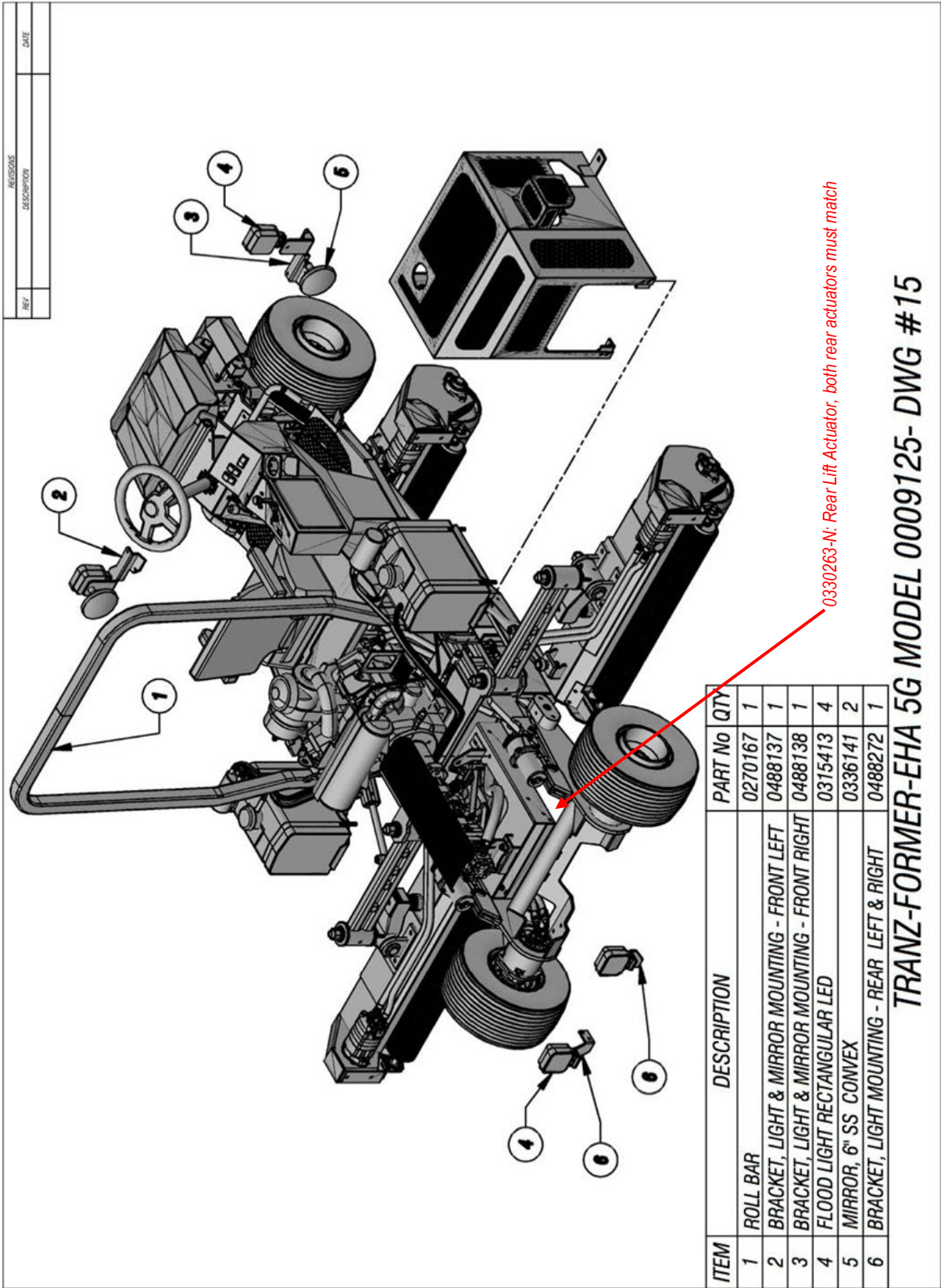
TRANZ-FORMER-EHA 5G MODEL 0009125 - DWG #13

ITEM	DESCRIPTION	PART NO	QTY
1	FRONT/REAR WHEELS AND WINGS	0314181	1
2	THROTTLE CABLE	0308047	1
3	ROLL TRANSPORT SWITCH	0315357	1
4	SWITCH, TOGGLE (LIGHTS)	0315419	1
5	PLATE, ON / OFF	0315155	1
6	BOOT, TOGGLE SWITCH	0315145	1
7	HOUR METER	0320015	1



TRANZ-FORMER-EHA 5G MODEL 0009125 - DWG #14

REV	DESCRIPTION	DATE

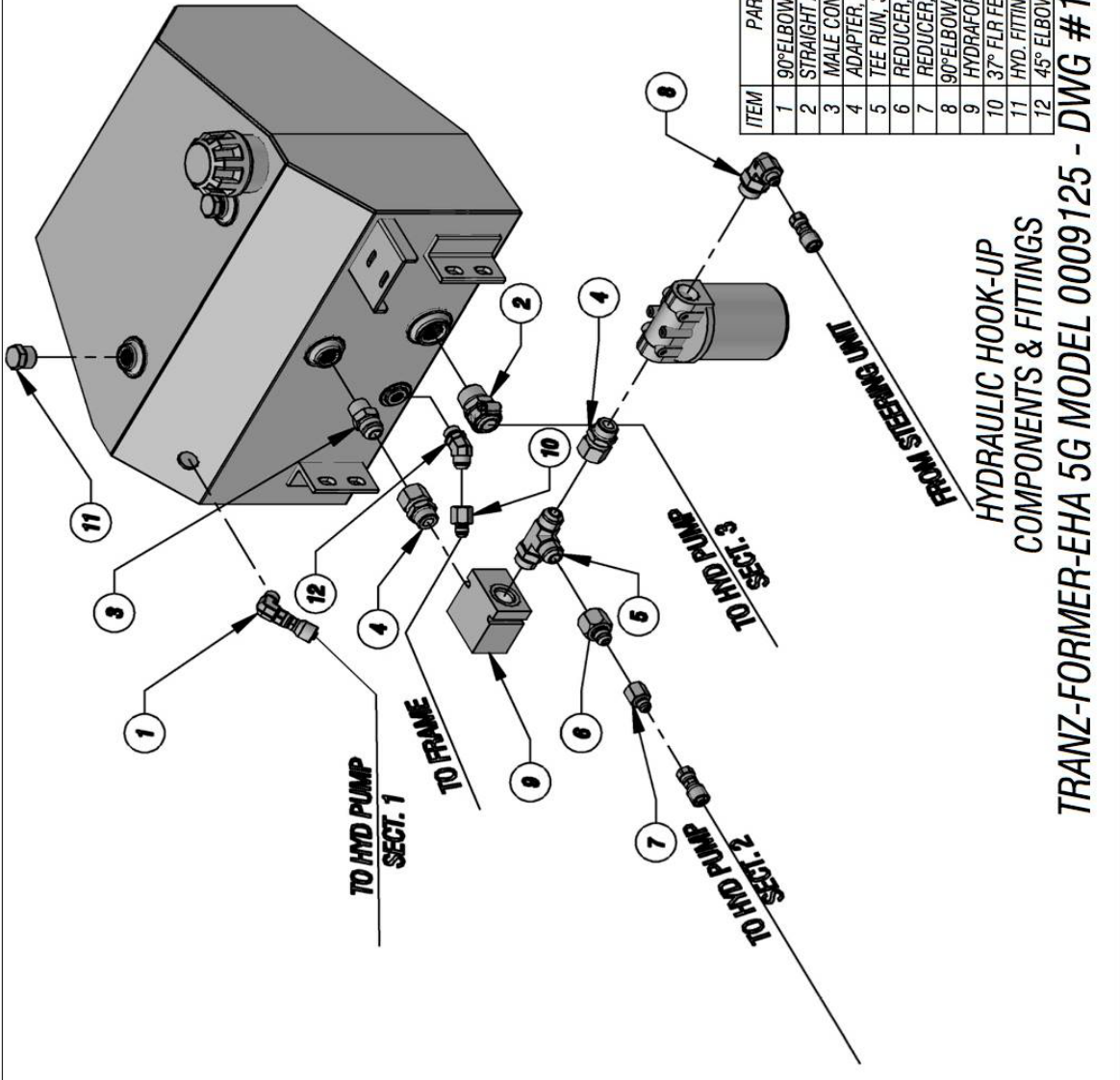


REV	DESCRIPTION	DATE

ITEM	DESCRIPTION	PART No	QTY
1	ROLL BAR	0270167	1
2	BRACKET, LIGHT & MIRROR MOUNTING - FRONT LEFT	0488137	1
3	BRACKET, LIGHT & MIRROR MOUNTING - FRONT RIGHT	0488138	1
4	FLOOD LIGHT RECTANGULAR LED	0315413	4
5	MIRROR, 6" SS CONVEX	0336141	2
6	BRACKET, LIGHT MOUNTING - REAR LEFT & RIGHT	0488272	1

TRANZ-FORMER-EHA 5G MODEL 0009125- DWG #15

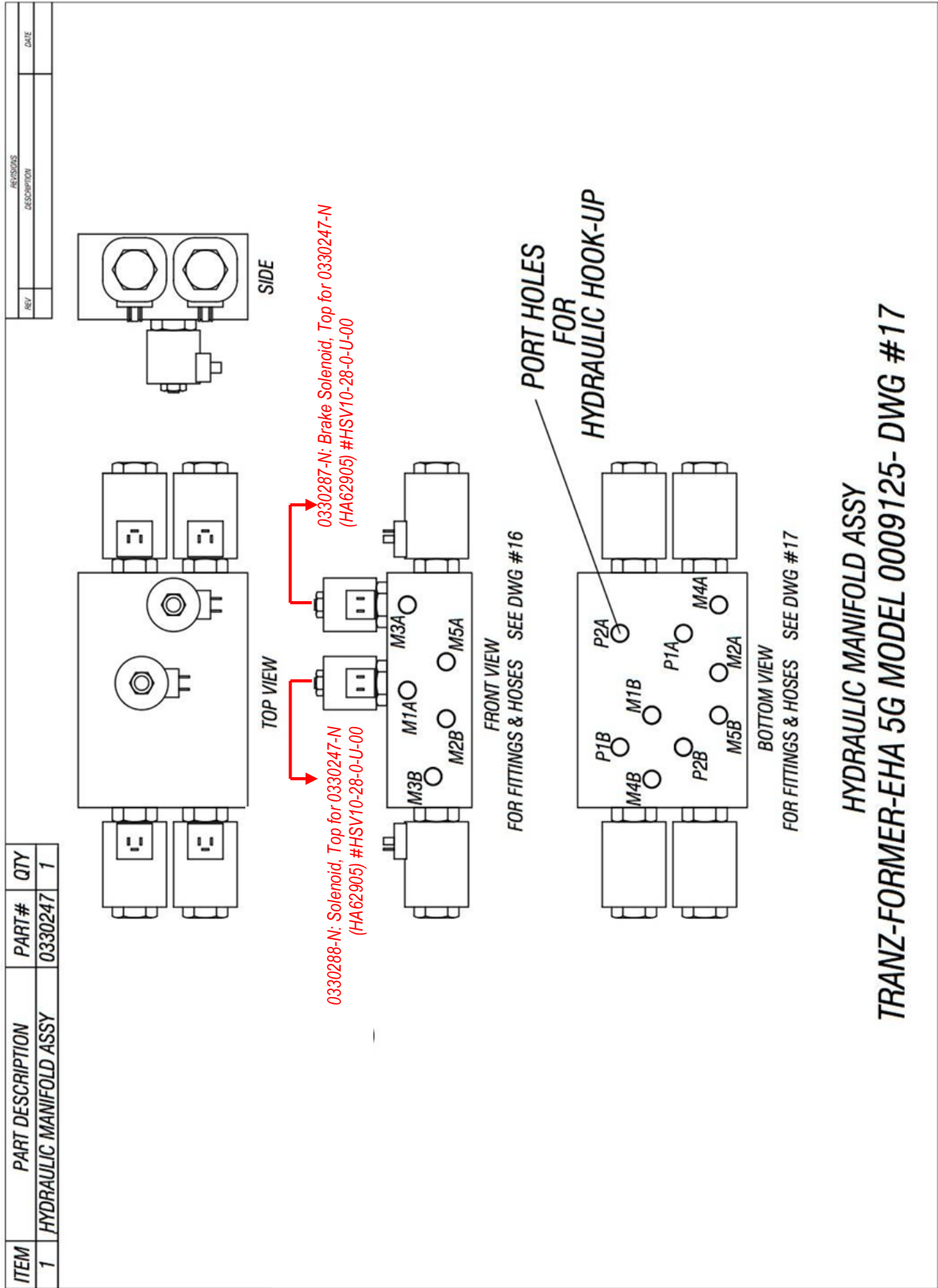
REV	DESCRIPTION	DATE

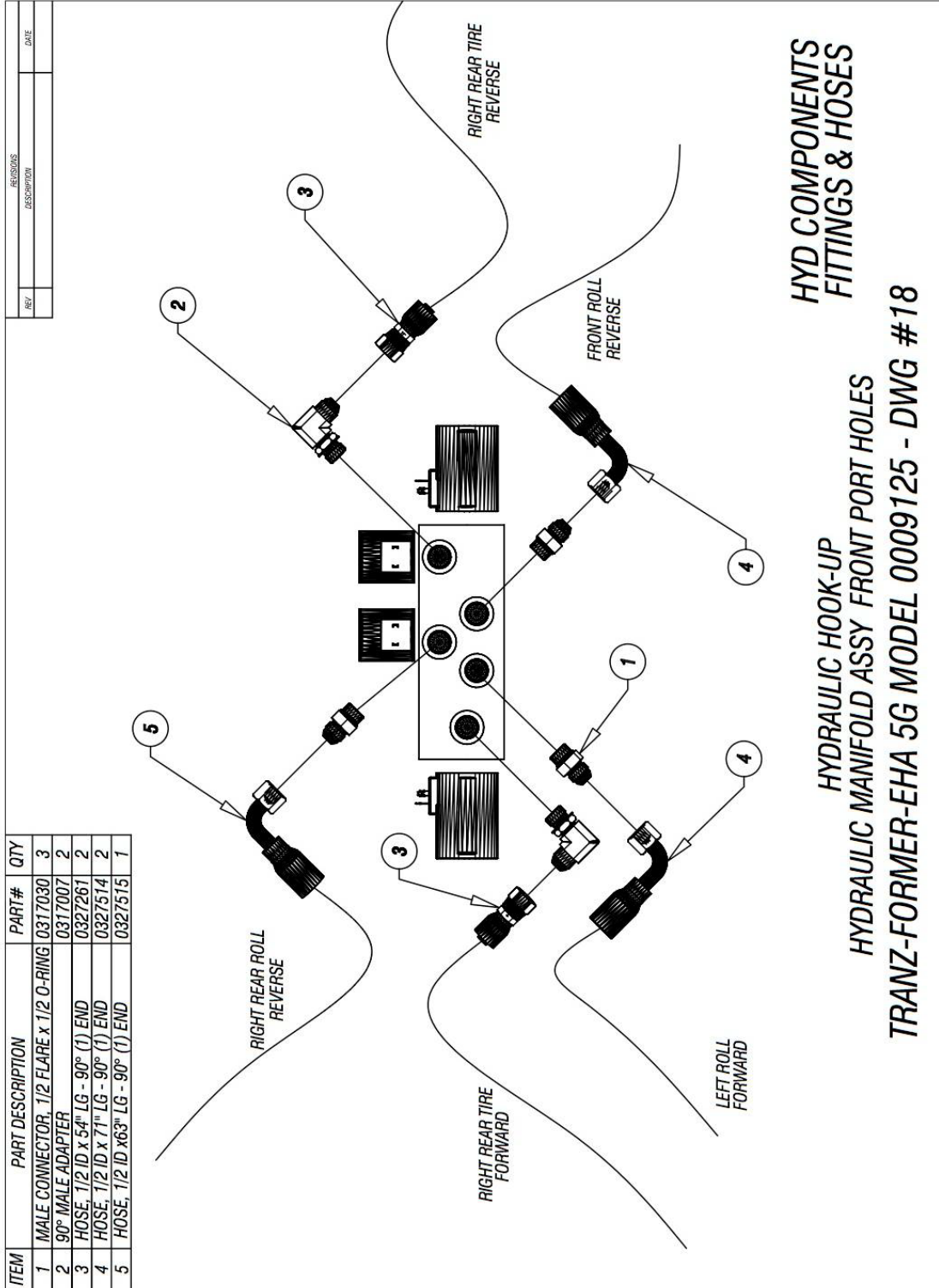


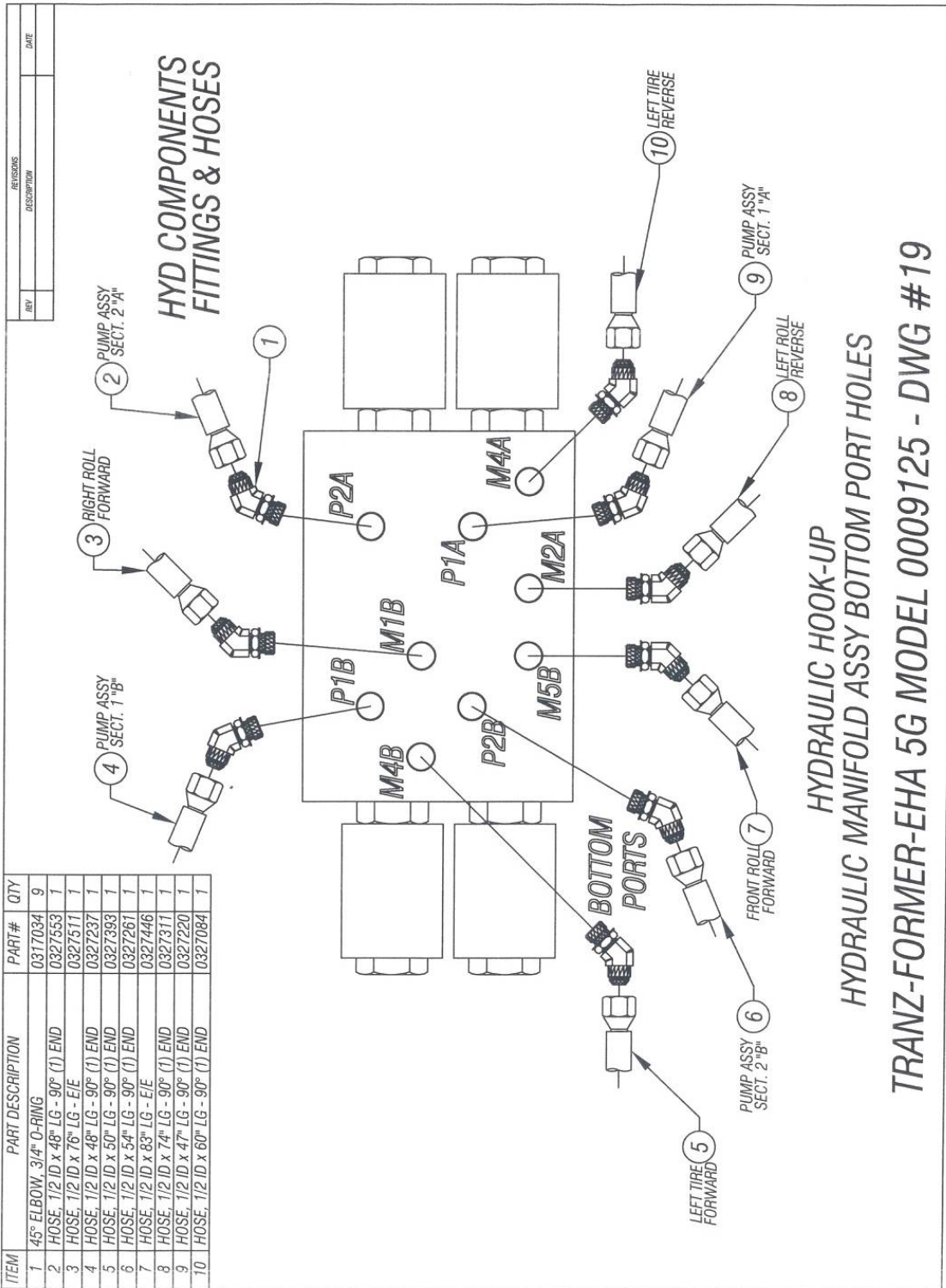
ITEM	PART DESCRIPTION	PART #	QTY
1	90° ELBOW, 3/8 FLR x 3/8 PIPE THD	0317005	1
2	STRAIGHT ADAPTER, 1" TUBE MALE	0317187	1
3	MALE CONNECTOR, 3/4 FLR x 3/4 PIPE THD	0317203	1
4	ADAPTER, 3/4 O-RING x 3/4 FEMALE SWIVEL	0317317	2
5	TEE RUN, 3/4 FLR x 3/4 O-RING x 3/4 FLR	0317307	1
6	REDUCER, 3/4 FEMALE FLR x 1/2 MALE FLR	0317219	2
7	REDUCER, 1/2 FEMALE FLR x 3/8 MALE FLR	0317296	1
8	90° ELBOW, 9/16-18 FLR x 1 1/16-12 O-RING	0317329	1
9	HYDRAFORCE CHECK VALVE	0330217	1
10	37° FLR FEMALE SWIVEL	0317265	1
11	HYD. FITTING- HEX HEAD PLUG- 3/4" NPT MALE	0317071	2
12	45° ELBOW, 3/4" O-RING	0317034	1

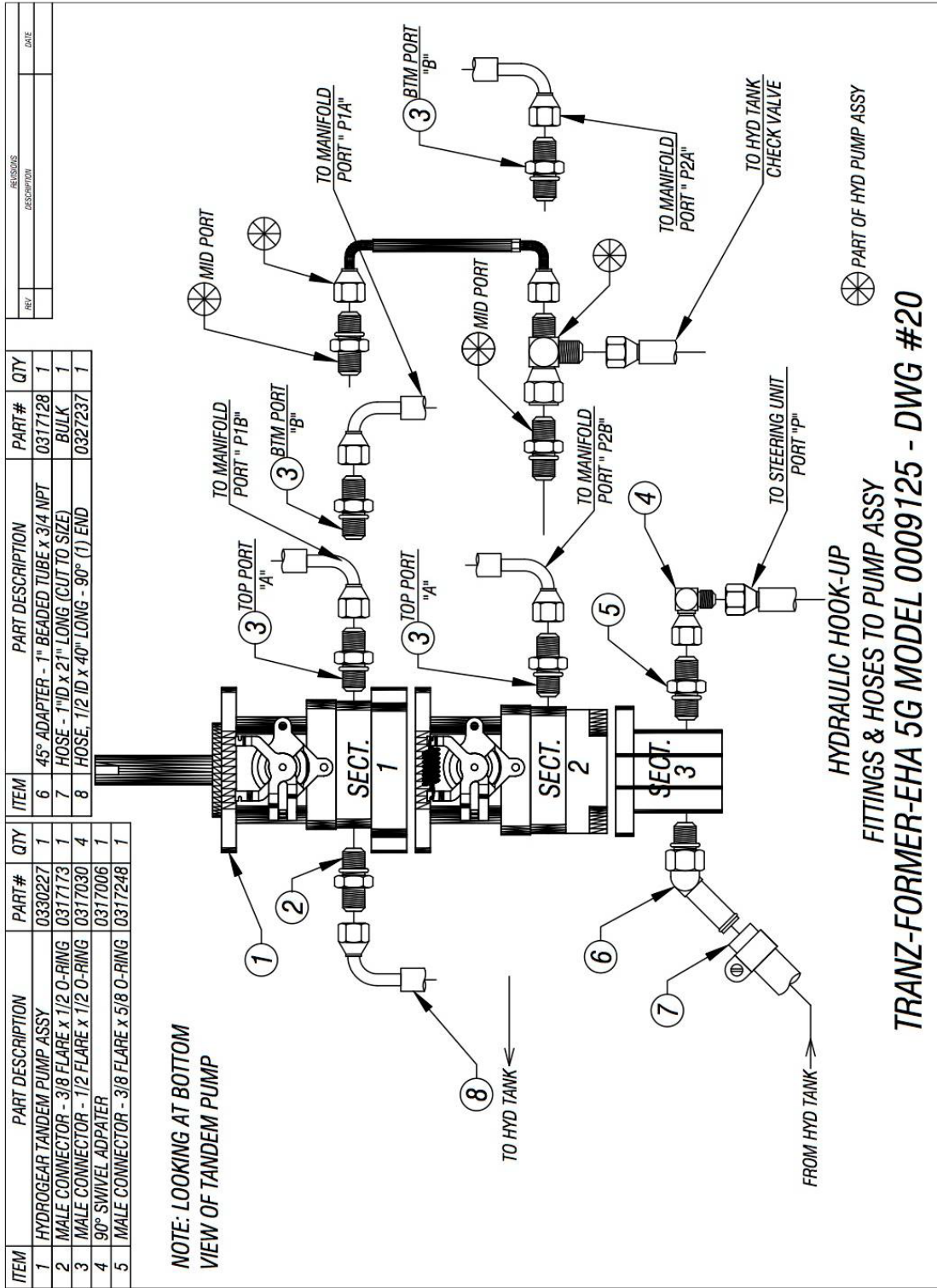
HYDRAULIC HOOK-UP
COMPONENTS & FITTINGS

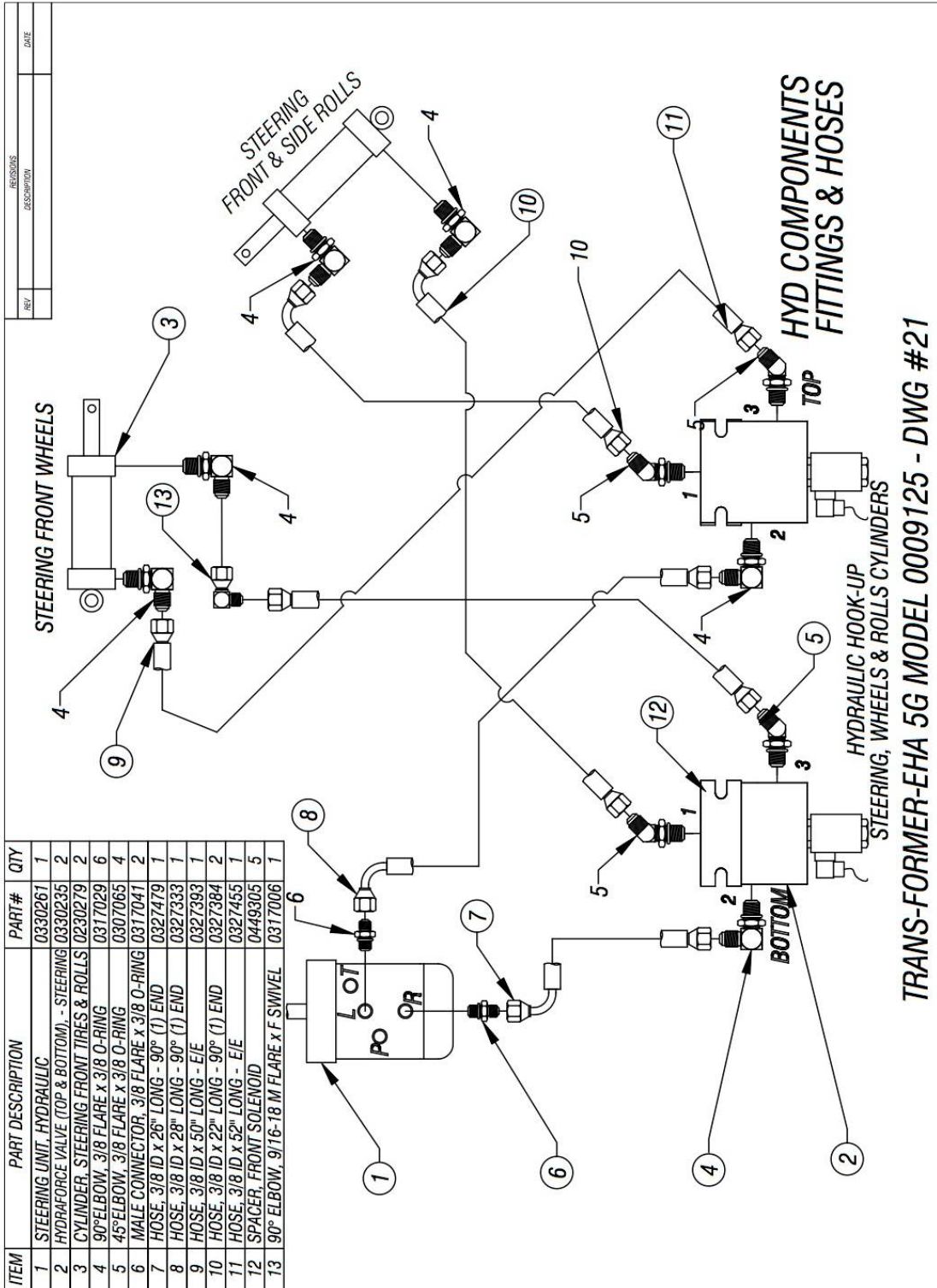
TRANZ-FORMER-EHA 5G MODEL 0009125 - DWG #16



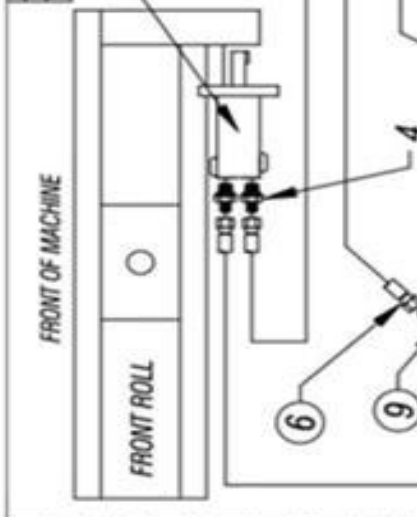








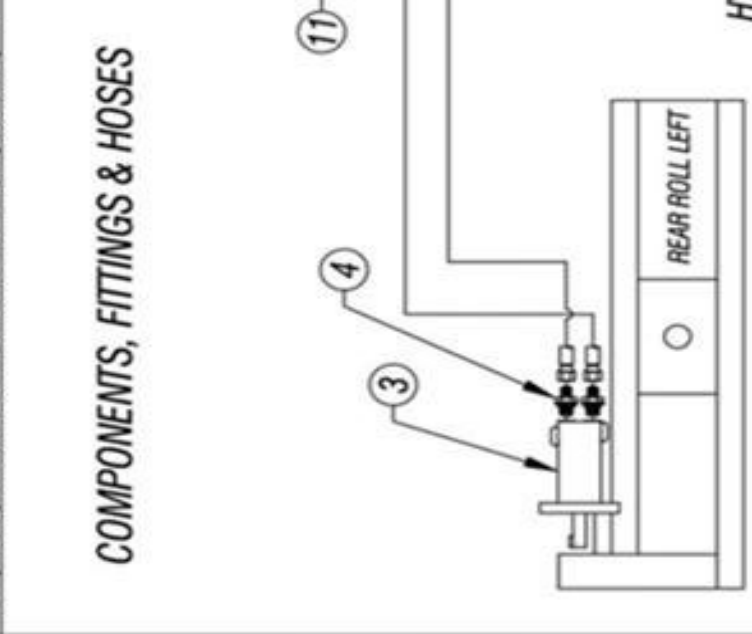
REV	DESCRIPTION	DATE



ITEM	PART DESCRIPTION	PART#	QTY
1	MANIFOLD ASSY, HYDRAULIC	0330247	1
2	DRIVE MOTOR, HYDRAULIC - FRONT ROLL	0330238	1
3	DRIVE MOTOR, HYDRAULIC - REAR ROLLS	0330244	2
4	MALE CONNECTOR, 1/2 FLR x 5/8 O-RING	0317027	6
5	MALE CONNECTOR, 1/2 FLR x 1/2 O-RING	0317030	3
6	HOSE, HYDRAULIC - 1/2 ID x 76" LG - E/E	0327511	1
7	HOSE, HYDRAULIC - 1/2 ID x 72" LG - 90°L	0327515	1
8	HOSE, HYDRAULIC - 1/2 ID x 71" LG - 90°	0327514	2
9	45° ELBOW ADAPTER, 3/4" O-RING	0317034	3
10	HOSE, HYDRAULIC - 1/2 ID x 74" LG - E/E	0327511	1
11	HOSE, HYDRAULIC - 1/2 ID x 83" LG - E/E	0327519	1

Use 0303022-N

COMPONENTS, FITTINGS & HOSES



HYDRAULIC HOOK-UP

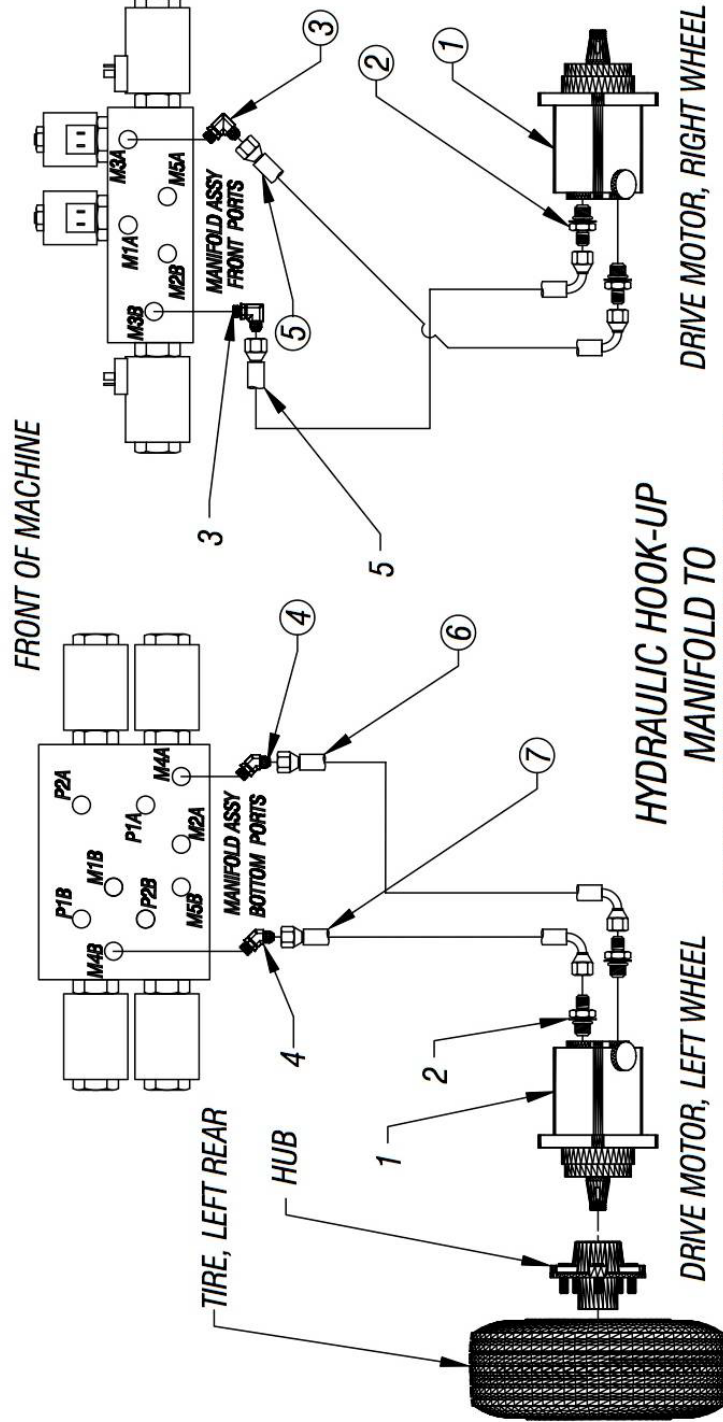
MANIFOLD TO FRONT AND REAR ROLL

TRANZ-FORMER-EHA 5G MODEL 0009125 - DWG # 22

REV	DESCRIPTION	DATE

ITEM	PART DESCRIPTION	PART #	QTY
1	MOTOR, HYDRAULIC - REAR WHEELS	0330256	2
2	MALE CONNECTOR, 1/2 FLARE x 5/8 O-RING	0317027	4
3	90° MALE ADAPTER	0317007	2
4	45° ELBOW ADAPTER, 3/4" O-RING	0317034	2
5	HOSE, HYD - 1/2 ID x 54" LONG 90° (1) END	0327261	1
6	HOSE, HYD - 1/2 ID x 60" LONG 90° (1) END	0327084	1
7	HOSE, HYD - 1/2 ID x 50" LONG 90° (1) END	0327556	1

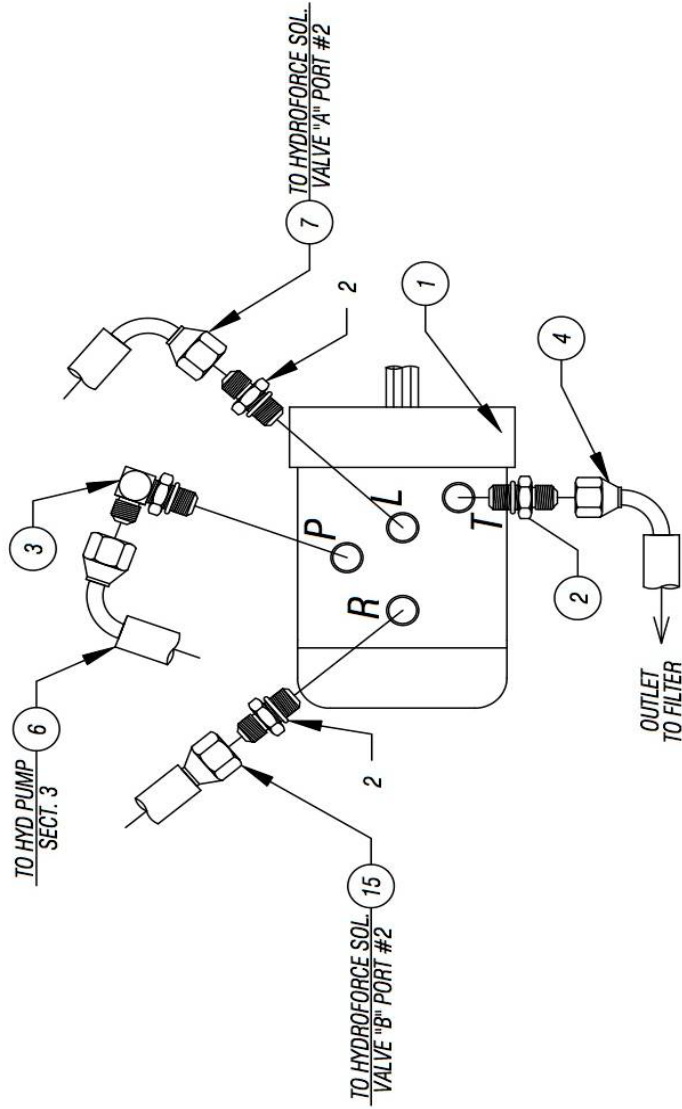
COMPONENTS, FITTINGS & HOSES



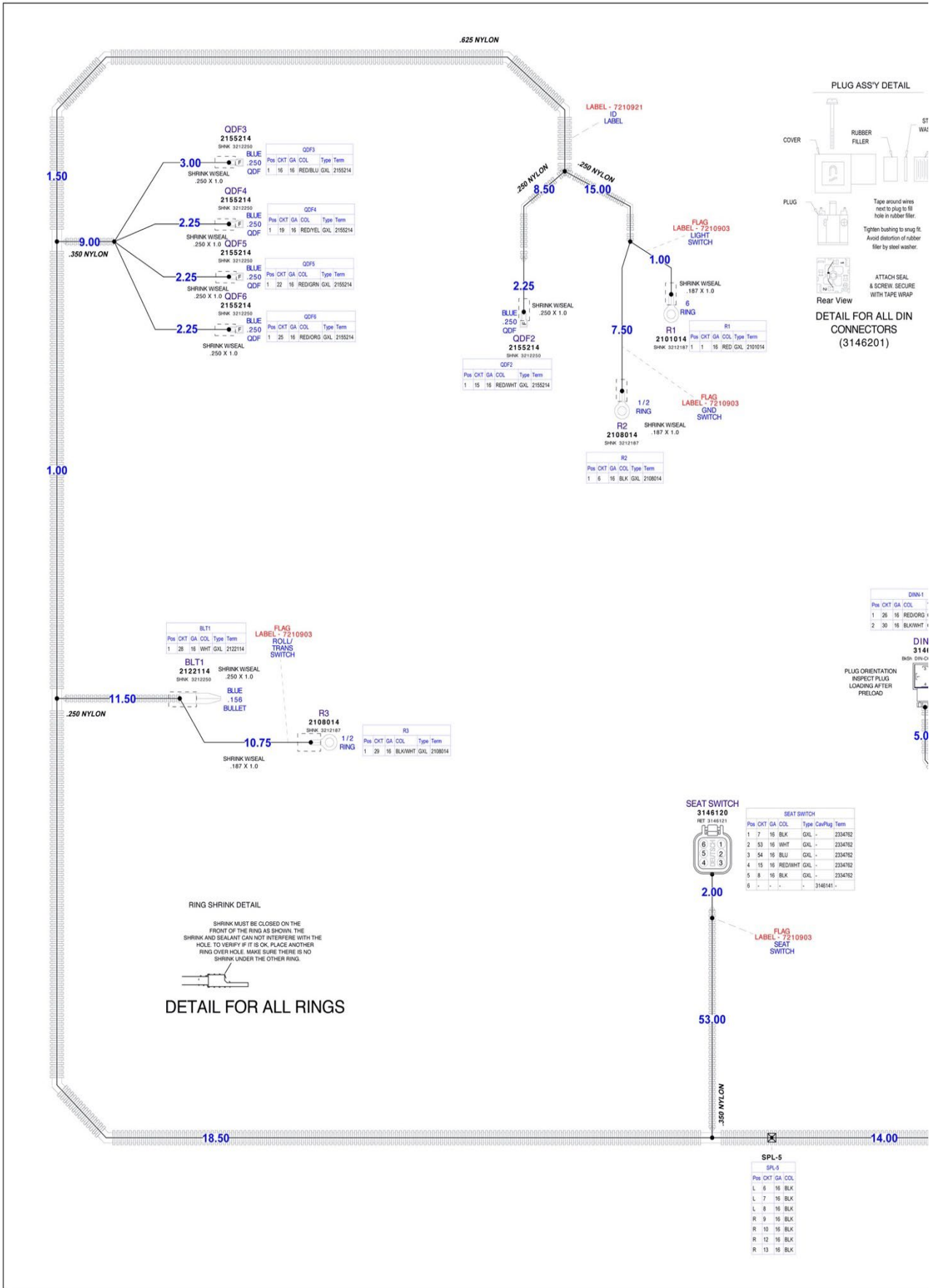
TRANZ-FORMER-EHA 5G MODEL 0009125 - DWG #23

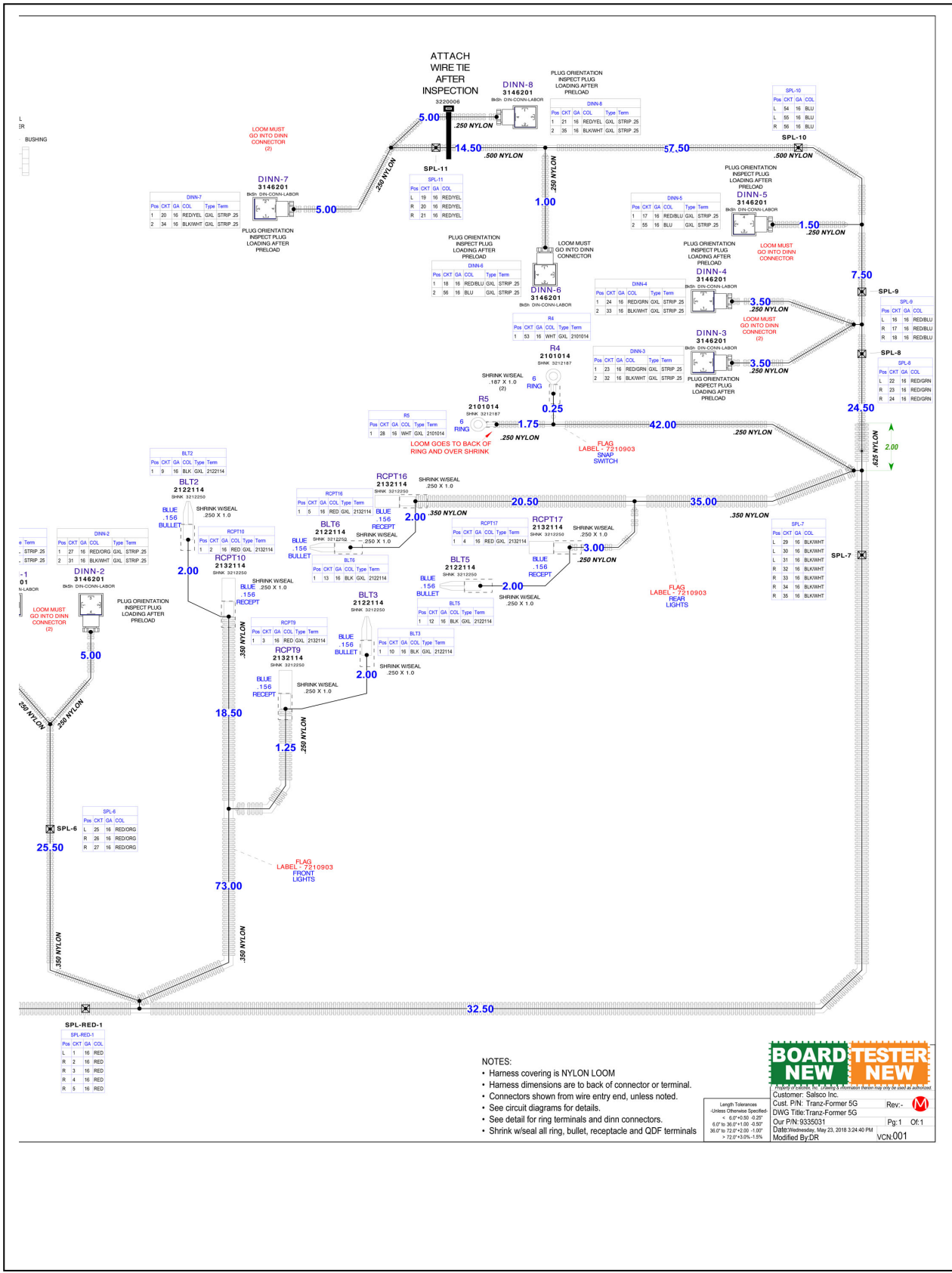
REV	REVISIONS DESCRIPTION	DATE

ITEM	PART DESCRIPTION	PART#	QTY
1	STEERING UNIT VALVE	0330261	1
2	MALE CONNECTOR, 3/8 FLARE x 3/8 O-RING	0317041	3
3	90° O-RING ELBOW, 3/8 FLARE x 3/8 O-RING	0317029	1
4	HOSE, 3/8 ID x 84" LONG - 90° (1) END	0327539	1
5	HOSE, 3/8 ID x 26" LONG - 90° (1) END	0327479	1
6	HOSE, 3/8 ID x 81" LONG - 90° (1) END	0327545	1
7	HOSE, 3/8 ID x 26" LONG - 90° (1) END	0327333	1



**HYDRAULIC HOOK-UP
STEERING UNIT
TRANZ-FORMER-EHA 5G MODEL 0009125 - DWG #24**





- NOTES:
- Harness covering is NYLON LOOM
 - Harness dimensions are to back of connector or terminal.
 - Connectors shown from wire entry end, unless noted.
 - See circuit diagrams for details.
 - See detail for ring terminals and dinn connectors.
 - Shrink w/seal all ring, bullet, receptacle and QDF terminals

BOARD TESTER NEW

Customer: Salsco Inc.
 Cust. P/N: Tranz-Former 5G
 DWG Title: Tranz-Former 5G
 Our P/N: 9335031
 Date: Wednesday, May 23, 2018 3:24:40 PM
 Modified By: DR

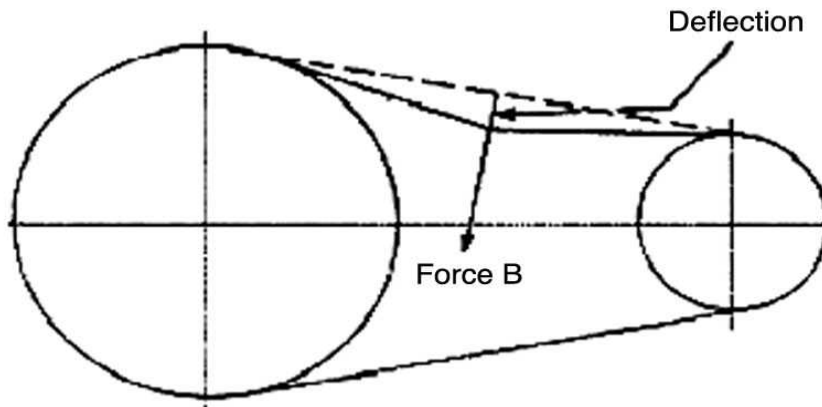
Rev: **M**
 Pg. 1 of 1
 VCN001

Below is a quick reference chart for various
 "Flat Head Cap Screws" and the torque recommendations.

VALUES ARE STATED IN FOOT POUNDS

BOLT SIZE	Thds Per Inch	SAE Grade 5	SAE Grade 8
1/4	20	10	14
	28	---	---
5/16	18	19	29
	24	---	---
3/8	16	33	47
	24	---	---
7/16	14	54	78
	20	---	---
1/2	13	78	119
	20	---	---
9/16	12	114	169
	18	---	---
5/8	11	154	230
	11	---	---
3/4	10	257	380
	10	---	---
7/8	9	382	600
	9	---	---
1	8	587	700
	8	---	---

Drive Belt Tension Measurement by Deflection



Deflection should be 3/8" when
 8-12 lbs. push is applied at "B"

GAS GREENS ROLLER SERVICE INTERVAL SCHEDULE

After ___ hours / Daily / Weekly / Yearly / See vendor manual

ENGINE - Check Honda service manual for recommended service intervals.

	H	D	W	Y	MANUAL
Check oil level		X			
Change oil	500				
Change oil filter	500				
Change fuel filter	500				
Check all for leaks		X			

HYDRAULIC SYSTEM

	H	D	W	Y	MANUAL
Grease hydraulic cylinders, pins, etc. where applicable			X		
Check for leaks (all hoses and fittings at both hose ends)		X			
Check hydraulic oil level ... <i>only if you see leaks</i>					
Change hydraulic oil First 500	1000				
Change hydraulic oil filter First 500	1000				
Inspect hoses for chafing, cracks, etc. and assure nothing impedes		X			

ADJUSTMENTS & DRIVES

	H	D	W	Y	MANUAL
Check all nuts, bolts, other fasteners for tightness			X		
Check chains for proper lubrication, wear, and tension			X		
Check belts for proper wear and tension (is belt dressing recommended?)			X		
Grease bearings, cylinders, steering shaft (is this a sealed bearing?)			X		

TRAILER

	H	D	W	Y	MANUAL
Check tire pressure (recommended pressure)			X		
Inspect tires for dry rot, tread wear, damage, etc.		X			
Grease axle and wheel hubs				X	

RECOMMENDED OIL - Fill within 6" of the top to avoid overflow when it gets hot.

Models 09065 / 09067	AW68 Hydraulic Oil
HP11	AW68 Hydraulic Oil
HP5.5	AW68 Hydraulic Oil
HP11-III	15-50 Motor Oil
Roll-n-Go, EHA	15-50 Motor Oil
Tranz-Former, EHA 5-G	10-40 Motor Oil

CUSTOMER SUPPORT

Contact Customer Support

SALSCO

105 Schoolhouse Road

Cheshire, CT 06410 USA

800-872-5726, 203-271-1682

203-271-2596 (Fax)

www.salsco.com

Registration and Warranty Information

www.salsco.com/register