

Salsco, INC.
LEADER BY DESIGN

MADE IN THE U.S.A

OPERATORS AND PARTS MANUAL TRACK PAVER, MODEL TP44-TD



MANUFACTURER OF OUTDOOR POWER EQUIPMENT

Products for Turf & Lawn care, Rental, Construction, Tree care, Wood Processing, Nursery & Farm Industries

Other Salsco Equipment

**Cobra Curber - Scorpion Router - Side Dump Bucket
3-1/2" - 18", Gas, Diesel, and P.T.O, Wood/Brush Chippers
Chipper Shredder Vacuum - Tailgate & Truckloader Vacuums
Gas and Electric Greens Rollers**

***Quality of Workmanship, Innovative
Design, Built to Last!***

105 School House Road
Cheshire, CT 06410 U.S.A.
800-872-5726, 203-271-1682, 203-271-2596 (Fax)
sales@salsco.com, www.salsco.com

TABLE OF CONTENTS

MODEL TP44-TD 0005029 DESCRIPTION

COVER & TABLE OF CONTENTS.....Pages 1 – 2

STATEMENT OF FACT Page 3

TRACK PAVER OPERATION.....Page 5-6

PARTS DIAGRAM.....Pages 7-25

TORQUE CHART.....Page 26

SERVICE SCHEDULE LOGPage 30

STATEMENT OF FACT

You have just purchased the highest quality, most dependable, Track Paver on the market today. This unit has the ability to meet exact standards and perform for years with minimum downtime. HOWEVER, it cannot read nor will it understand this manual no matter how long you leave it on top of the machine.

It is your responsibility to read and understand this manual; it is also your responsibility to be certain this information is passed along to anyone who is expected to operate this equipment. Should you choose not to read, understand and pass along the information provided you, please expect equipment failure and possible injuries to persons around this equipment.

For the safety of the operator, it is **imperative** that this manual is carefully read and understood.

Once you have read this manual, it is your responsibility to be sure that all new operators read and understand this manual, especially all cautions stated.

As a manufacturer of equipment, we have a responsibility to design a safe piece of equipment. NOTE: The important safeguards and instructions in this manual are not meant to cover all possible conditions and situations that may occur. It must be understood that common sense, caution, and care are factors, which cannot be built into any product. These factors must be supplied by the person(s) caring for and operating this equipment.

TRACK PAVER TP44-TD OPERATION

IT IS HIGHLY RECOMMENDED TO USE ONLY SUPER GUARD 20W-50 HYD. OIL

Read this manual before starting. Never let anyone not properly trained operate this machine. Be sure no one that is not familiar with the operation is in the vicinity when ready to start the unit.

Prior to Starting

- Drive controls **MUST** be in neutral and locked.
- **REMOVE** all packaging and shipping materials.
- **ALL** fluid levels are filled to manufacturer's specifications. (Check engine manual for proper levels.)
- **CAUTION: TO STOP ENGINE PUSH THE THROTTLE IN!**

First Get to Know the Machine

- After checking all oil and fuel levels...
- Start the engine with the forward/reverse in neutral with the locks in place.
- Go to the hydraulic control valve over the screed.
- First move the screed lever, raise then lower the screed. When you push or pull the lever it will lock in. This will be the float position, which will allow the screed to float.
- Try each of the other levers so you can become familiar with the machine.

Screed and End Gates

- Raise the screed and block it up to prevent it from falling when you have your arm under the machine.
- Extend the end gates and turn the engine off.
- Now reach under the end gate and turn the wing nut on top of the end gate. You will feel the butterfly under the end gate moving.
- By adjusting the butterflies on the end gates, you will achieve a more even texture so when rolled, it will blend much better.
- At this time, adjust the goal post on the ends of the screed. You will see how this adjustment will move the screed which will allow it to climb or dive while paving.
- Lastly in the center of the screed, you will see a crown invert adjustment. This is used to keep the screed flat, or to put an invert to carry water runoff, or a crown to allow water to run off the sides of the mat.

Test with Sand

- The first test will be with sand.
- You will need a small dump truck of wet sand, and two pieces of 2" x 4" x 20" wood.
- Lay the 2x4s under the screed long ways.
- Raise the screed and turn the goal post till you find what feels like neutral.
- From this point, you can turn the goal post together and watch the screed pitch either climb or dive.
- Adjust the screed so it is flat on the 2x4s, then change the adjustment so the edge closest to the hopper is off the 2x4s by maybe ¼".

Run the Test

- Leave the screed on the 2x4s.
- Be sure the screed raise/lower handle is in the float position.
- Fill the hopper with sand.
- Move the track controls slowly causing the machine to move away from the screed.

TRACK PAVER TP44-TD OPERATION (Continued)

- Let the machine move slow, keep a constant speed, keep filling the machine without stopping the machine.
- After 10 or so feet while the machine is still moving, check the mat.
- If you want it thicker, adjust the goal post so it climbs, go a little at a time and recheck.

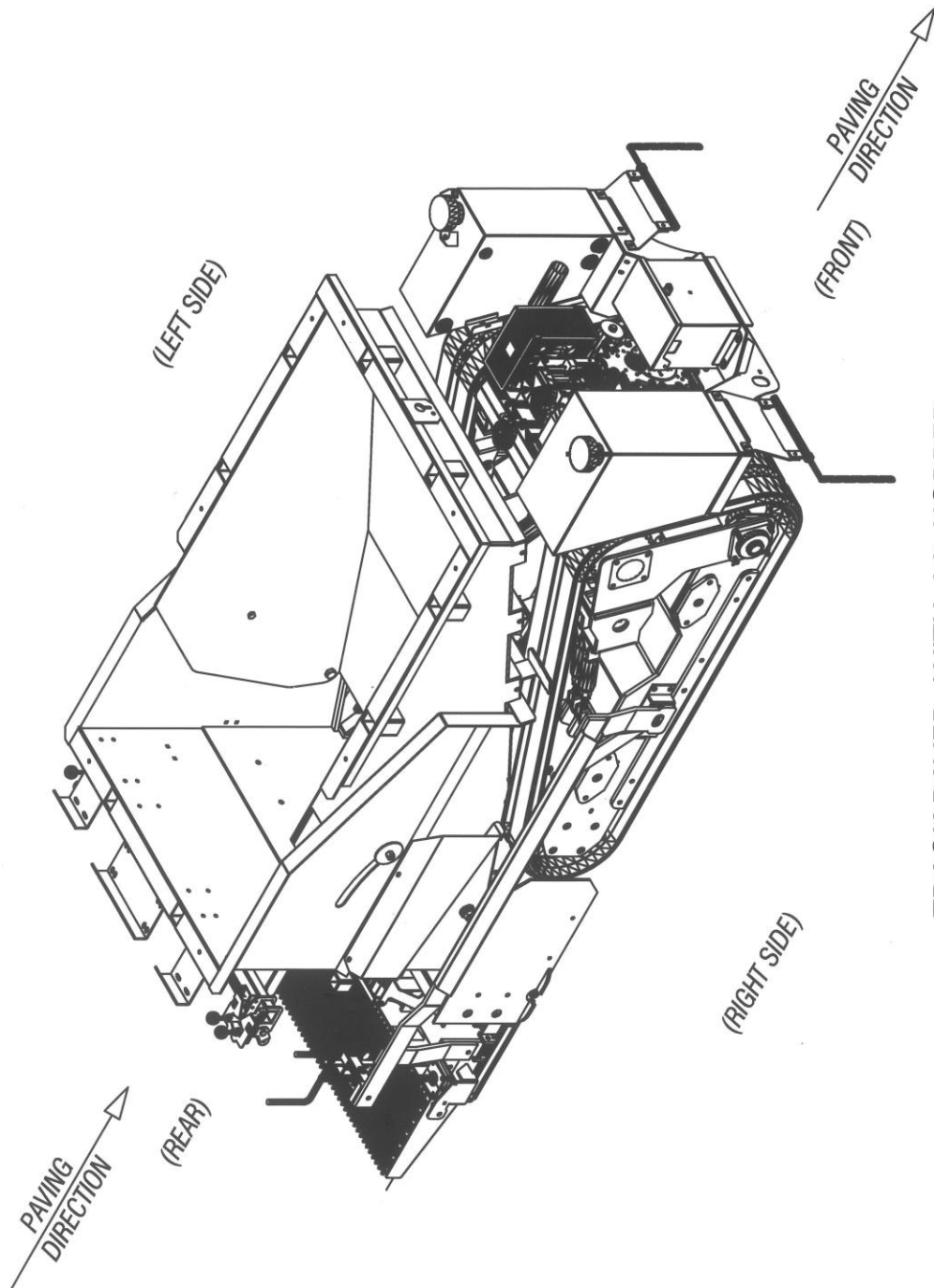
Things to Remember

- The float position of the control lever.
- How to adjust the screed.
- Keep the machine moving.
- Slower is better.
- **The trick is to keep a slow ground speed and keep the hopper $\frac{3}{4}$ full!**

Now You are Ready for Asphalt

- Be sure to oil the machine.
- Use the 2x4s.
- Put material in the machine and drive it a couple feet till the material comes out from the screed and stop the machine.
- Wait a few minutes for the machine to warm up from the material.
- Put the machine in drive and pave.

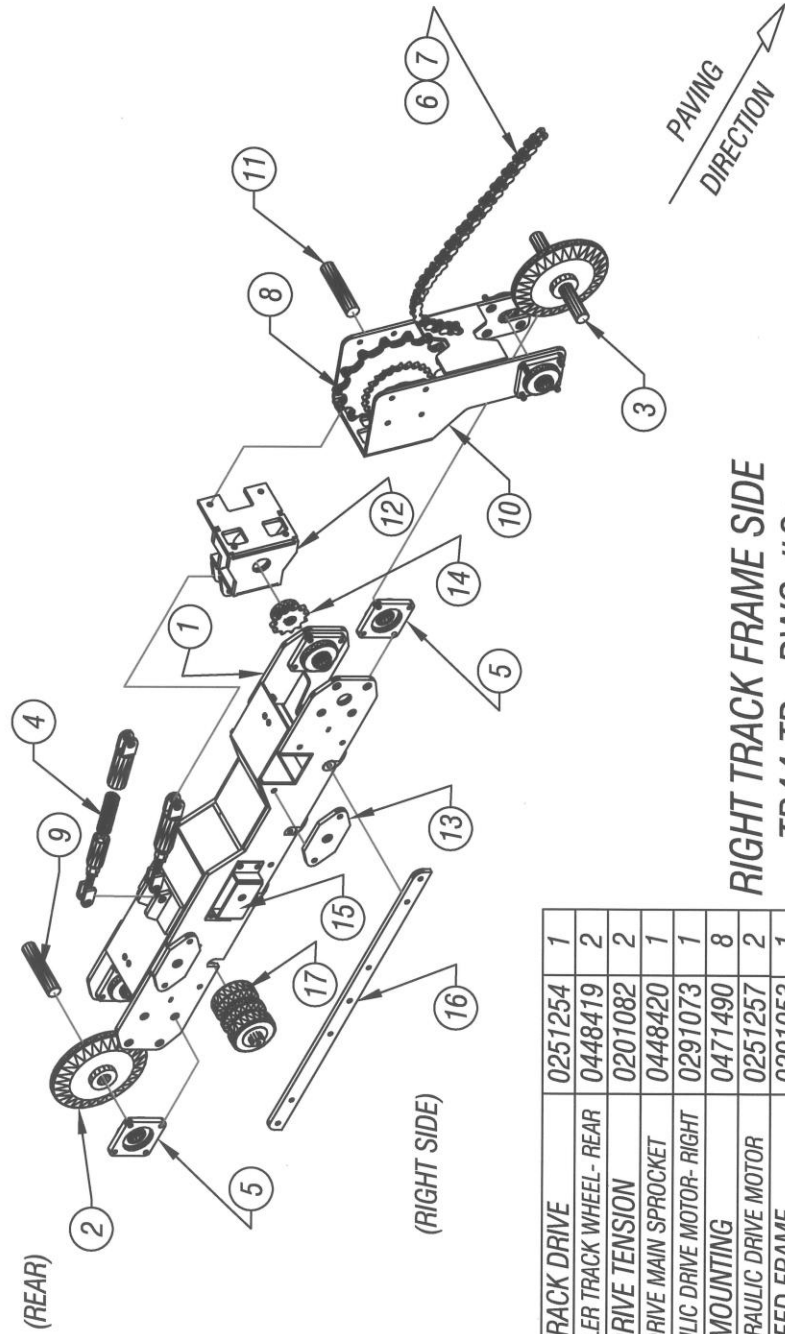
REV	DESCRIPTION	DATE



TRACK PAVER WITH 44" HOPPER
 TP44-TD - DWG #1

REV	DESCRIPTION	DATE

ITEM	DESCRIPTION	PART NO	QTY
1	FRAME, TRACK DRIVE	0219578	1
2	WHEEL, TRACK IDLER - MAIN	0254148	2
3	SHAFT, MAIN IDLER TRACK WHEEL- FRONT	0448418	1
4	SPRING, COMPR.- (13 COIL)	0350044	2
5	BEARING, 4-BOLT FLANGED	0303002	8
6	DRIVE CHAIN, #80 x 33 PITCHES	0309079	1
7	MASTER LINK, #80 CHAIN	0309038	1

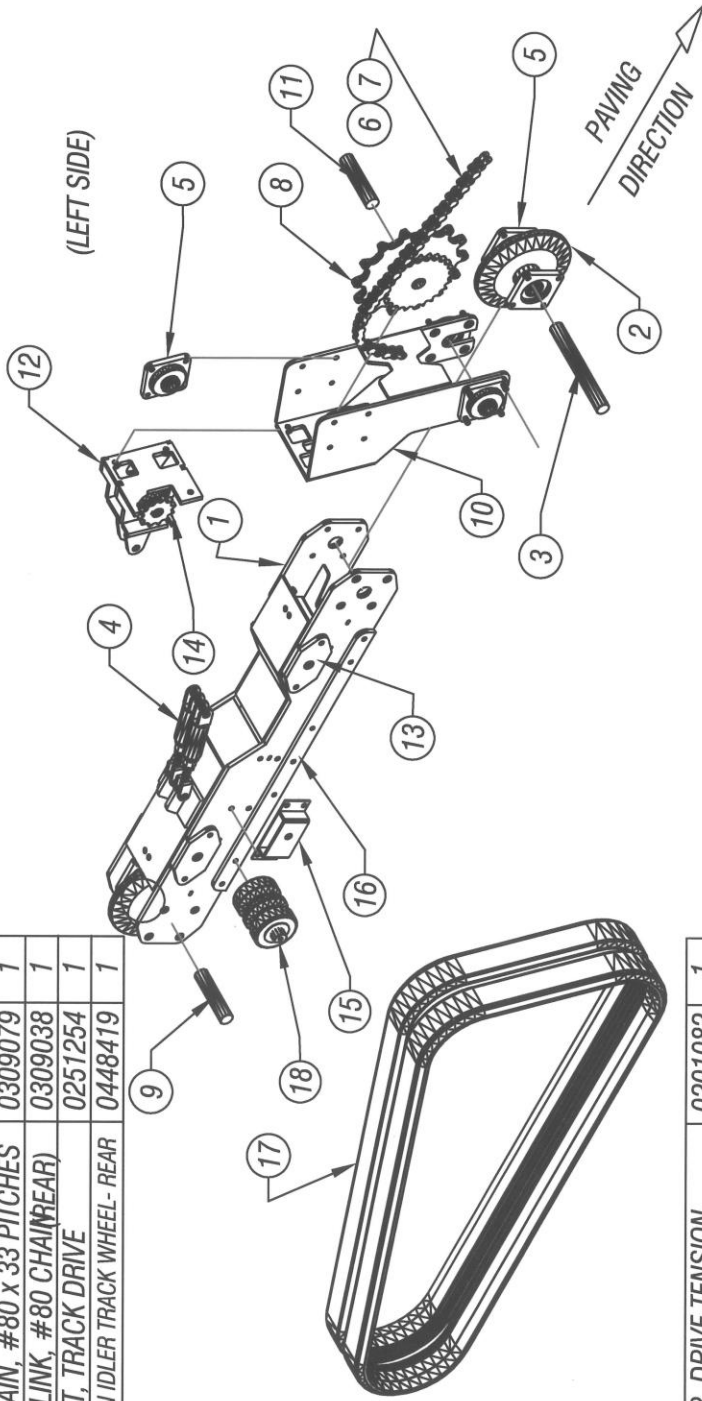


**RIGHT TRACK FRAME SIDE
TP44-TD - DWG #2**

8	SPROCKET, TRACK DRIVE	0251254	1
9	SHAFT, MAIN IDLER TRACK WHEEL- REAR	0448419	2
10	ADJUSTER, DRIVE TENSION	0201082	2
11	SHAFT, TRACK DRIVE MAIN SPROCKET	0448420	1
12	MOUNT, HYDRAULIC DRIVE MOTOR- RIGHT	0291073	1
13	CAP, TRACK MOUNTING	0471490	8
14	SPROCKET, HYDRAULIC DRIVE MOTOR	0251257	2
15	MOUNT, SCREED FRAME	0291053	1
16	PLATE, TRACK IDLER GUIDE WHEEL BOLT RETAINER	0490529	2
17	WHEEL, IDLER	0354151	4

REV	REVISIONS DESCRIPTION	DATE

ITEM	DESCRIPTION	PART NO	QTY
1	FRAME, TRACK DRIVE	0219548	2
2	WHEEL, TRACK IDLER - MAIN	0254148	2
3	SHAFT, MAIN IDLER TRACK WHEEL- FRONT	0448418	1
4	SPRING, COMPR.- (13 COIL)	0350044	2
5	BEARING, 4-BOLT FLANGED	0303002	8
6	DRIVE CHAIN, #80 x 33 PITCHES	0309079	1
7	MASTER LINK, #80 CHAIN(REAR)	0309038	1
8	SPROCKET, TRACK DRIVE	0251254	1
9	SHAFT, MAIN IDLER TRACK WHEEL- REAR	0448419	1



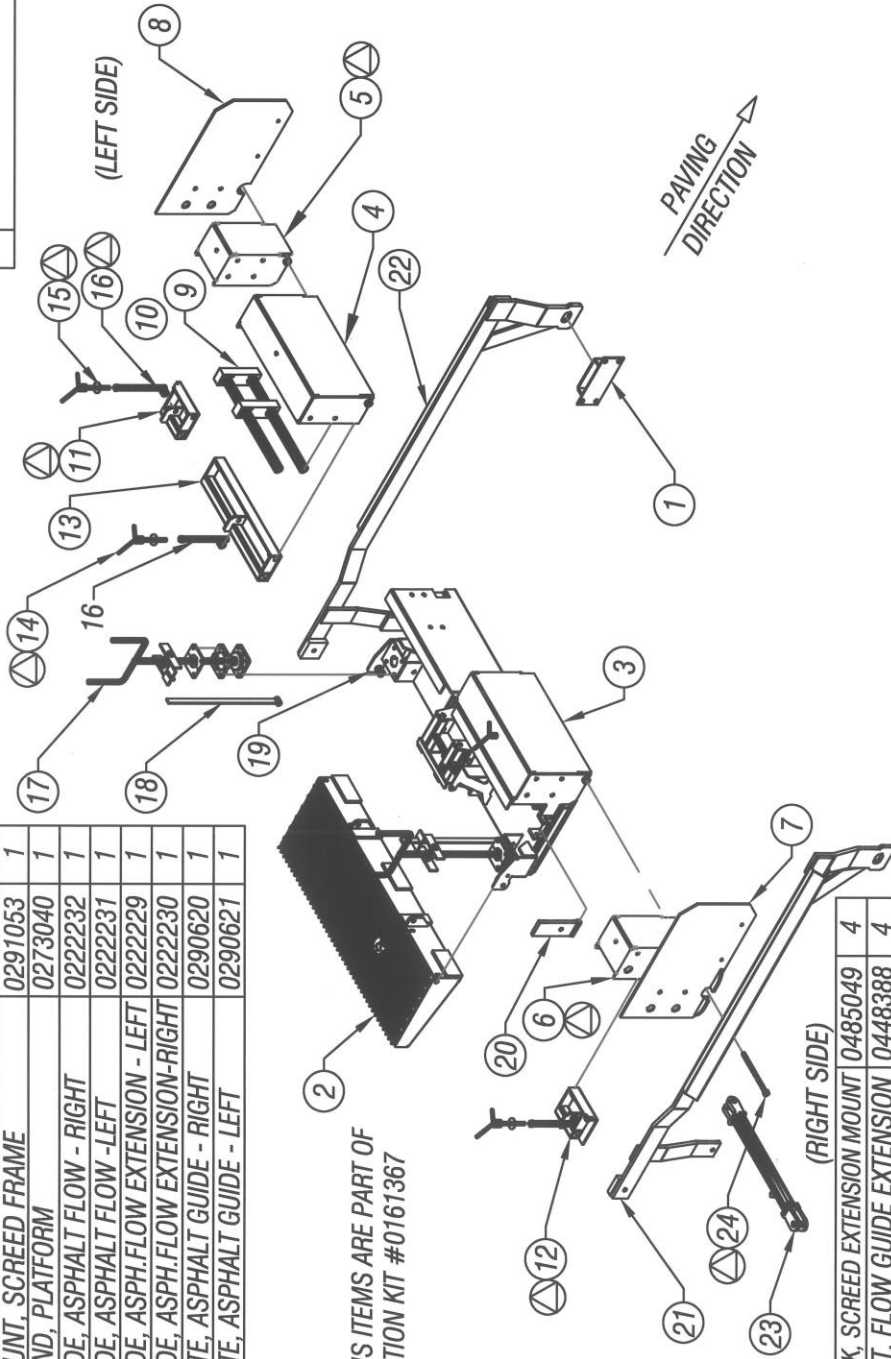
LEFT TRACK FRAME SIDE
TP44-TD - DWG #3

10	ADJUSTER, DRIVE TENSION	0201082	1
11	SHAFT, TRACK DRIVE MAIN SPROCKET	0448420	1
12	MOUNT, HYDRAULIC DRIVE MOTOR- LEFT	0291072	1
13	CAP, TRACK MOUNTING	0471490	4
14	SPROCKET, HYDRAULIC DRIVE MOTOR	0251257	2
15	MOUNT, SCREED FRAME	0291053	1
16	PLATE, TRACK IDLER GUIDE WHEEL BOLT RETAINER	0490529	2
17	DRIVE TREAD, RUBBER TRACK	0354102	1
18	WHEEL, IDLER	0354151	4

REV	DESCRIPTION	DATE

ITEM	DESCRIPTION	PART NO	QTY
1	MOUNT, SCREED FRAME	0291053	1
2	STAND, PLATFORM	0273040	1
3	GUIDE, ASPHALT FLOW - RIGHT	0222232	1
4	GUIDE, ASPHALT FLOW - LEFT	0222231	1
5	GUIDE, ASPH.FLOW EXTENSION - LEFT	0222229	1
6	GUIDE, ASPH.FLOW EXTENSION-RIGHT	0222230	1
7	PLATE, ASPHALT GUIDE - RIGHT	0290620	1
8	PLATE, ASPHALT GUIDE - LEFT	0290621	1

⊗ THIS ITEMS ARE PART OF
OPTION KIT #0161367



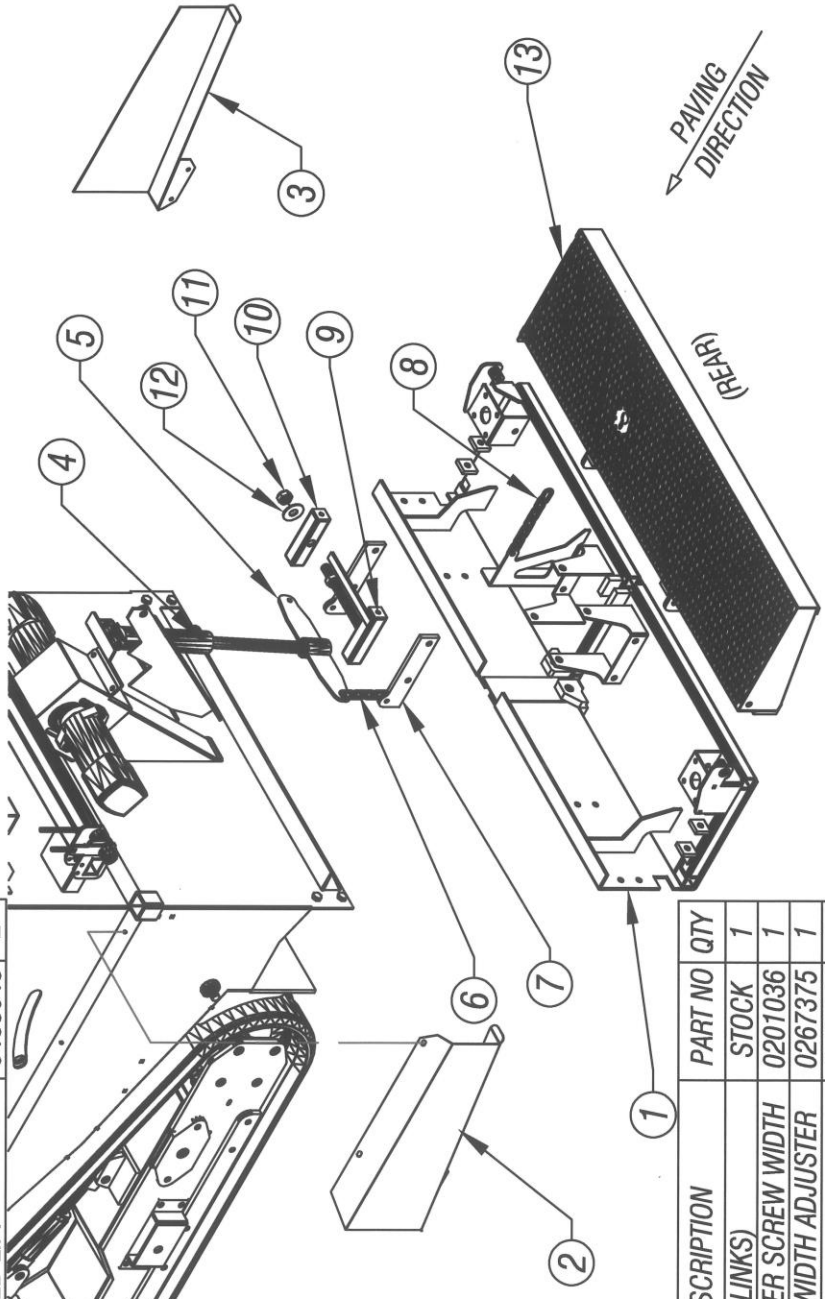
9	BLOCK, SCREED EXTENSION MOUNT	0485049	4
10	SHAFT, FLOW GUIDE EXTENSION	0448388	4
11	FRAME, 6" SCREED EXTEN. - LEFT	0219528	1
12	FRAME, 6" SCREED EXTEN. - RIGHT	0219529	1
13	FRAME, TRACK PAVER SCREED	0219530	2
14	ADJUSTER, SCREED EXTENSION	0201069	4
15	WASHER, FENDER - 1/2 ID	0353204	4
16	ROD, EXTEN. SCREED ADJUSTMT	0245189	4
17	JACK, SCREED HEIGHT ASSY	0169054	2

18	BAR, HEIGHT GAUGE	0270166	2
19	FRAME, SCREED	0219531	1
20	LINK, SCREED HEIGHT ADJUSTMT	0234061	2
21	ARM, SCREED EXT. LIFT - RIGHT	0265160	1
22	ARM, SCREED EXT. LIFT - LEFT	0265159	1
23	HYD CYLINDER (SCREED EXTENT)	0330254	2
24	BOLT, SCREED EXTENSION PIVOT	0246911	2

TP44-TD - DWG #4

REV	DESCRIPTION	DATE

ITEM	DESCRIPTION	PART NO	QTY
1	FRAME, SCREED	0219531	1
2	GUARD, REAR CONTROL CABLE-LEFT	0421599	1
3	GUARD, REAR CONTROL CABLE-RIGHT	0421598	1
4	HYD CYLINDER, SCREED-UP/DOWN	0330157	1
5	ARM, SCREED LIFT HYD CYLINDER	0265120	1
6	CHAIN, - 3/8 x (4 LINKS)	STOCK	2
7	BRACKET, SCREED LIFT	0488048	2

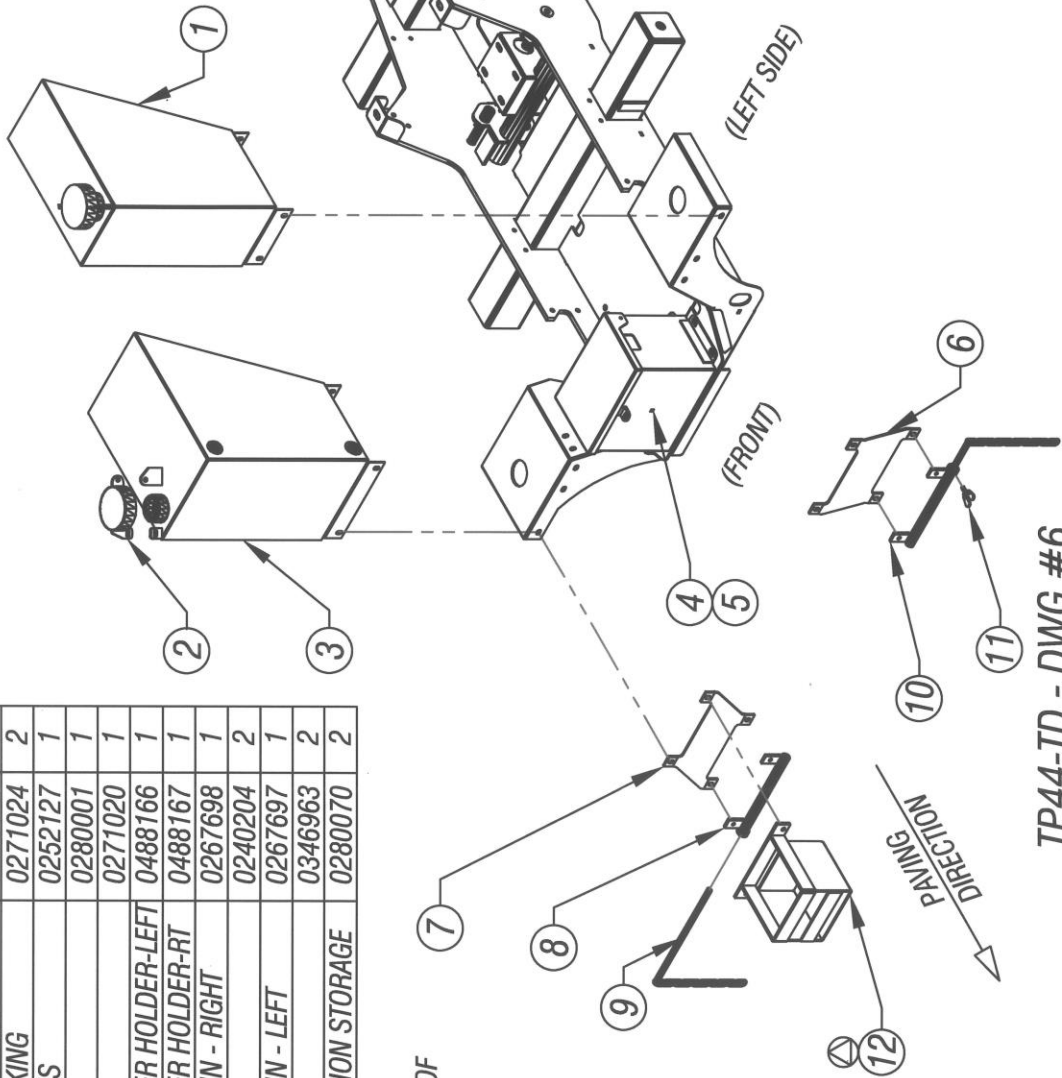


TP44-TD - DWG #5

ITEM	DESCRIPTION	PART NO	QTY
8	CHAIN, 3/8 x (8 LINKS)	STOCK	1
9	ADJUSTER, PAVER SCREW WIDTH	0201036	1
10	TUBE, SCREED WIDTH ADJUSTER	0267375	1
11	HEX NUT, 3/4-10	0338014	2
12	WASHER, 3/4 FLAT	0353139	3
13	STAND, PLATFORM	0273040	1

REV	DESCRIPTION	DATE

ITEM	DESCRIPTION	PART NO	QTY
1	TANK, HYDRAULIC- 8 GALLONS	0252126	1
2	CAP, GAS / OIL FILL LOCKING	0271024	2
3	TANK, FUEL - 11 GALLONS	0252127	1
4	BOX, BATTERY	0280001	1
5	COVER, BATTERY BOX	0271020	1
6	BRACKET, WIDTH MARKER HOLDER-LEFT	0488166	1
7	BRACKET, WIDTH MARKER HOLDER-RT	0488167	1
8	TUBE, WIDTH MARKER PIN - RIGHT	0267698	1
9	PIN, WIDTH MARKER	0240204	2
10	TUBE, WIDTH MARKER PIN - LEFT	0267697	1
11	WING SCREW	0346963	2
12	BOX, 6" SCREED EXTENSION STORAGE	0280070	2



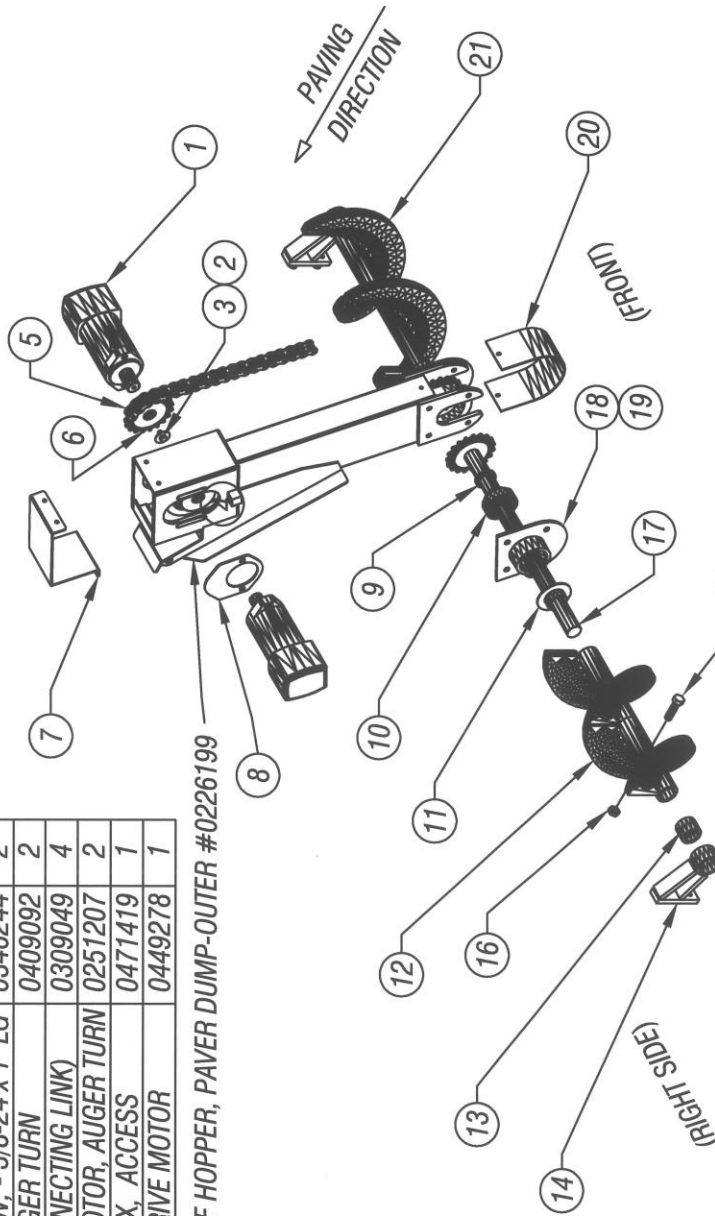
⊕ THIS (2) ITEMS ARE PART OF
OPTION KIT #0161367

TP44-TD - DWG #6

REV	DESCRIPTION	DATE

ITEM	DESCRIPTION	PART NO	QTY
1	HYD MOTOR, AUGER TURN	0330209	2
2	WASHER, FENDER - 3/8 ID	0353203	2
3	SOC HD CAP SCREW, - 3/8-24 x 1" LG	0346244	2
4	ROLLER CHAIN, AUGER TURN	0409092	2
5	MASTER LINK (CONNECTING LINK)	0309049	4
6	SPROCKET, HYD MOTOR, AUGER TURN	0251207	2
7	COVER, AUGER BOX, ACCESS	0471419	1
8	SPACER, AUGER DRIVE MOTOR	0449278	1

PART OF HOPPER, PAVER DUMP-OUTER #0226199



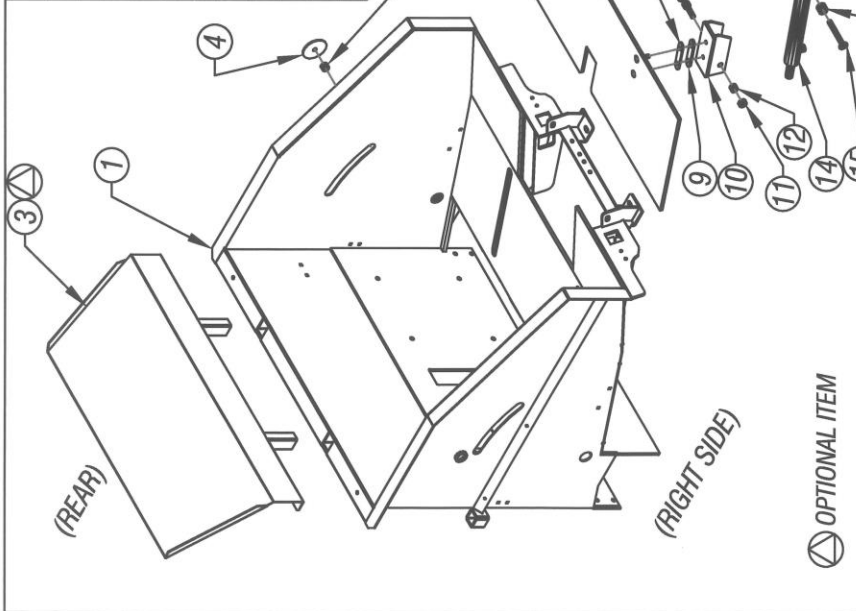
ITEM	DESCRIPTION	PART NO	QTY
9	SPACER, 2 OD x .243 W x .375	STOCK	2
10	BEARING	0303086	2
11	SPACER, AUGER SHAFT DRIVE	0249277	2
12	AUGER, RIGHT	0336137	1
13	BUSHING, BRONZE - OILIGHT	0307031	2
14	MOUNT, AUGER SHAFT	0276759	2
15	BOLT, HEX HEAD	0346522	2
16	NUT, CASTLE	0338204	2

ITEM	DESCRIPTION	PART NO	QTY
17	SHAFT, AUGER DRIVE	0248384	2
18	HOUSING, AUGER BEARING (RIGHT)	0228284	1
19	HOUSING, AUGER BEARING (LEFT)	0228286	1
20	GUARD, AUGER CHAIN DRIVE	0421600	2
21	AUGER LEFT	0336138	1

TP44-TD - DWG #7

REV.	DESCRIPTION	DATE

ITEM	DESCRIPTION	PART NO	QTY
10	ADJUSTER, MAT'L CUT OFF PL.	0201068	2
11	SET COLLAR, -.625 ID	0311004	8
12	SPACER, 1.25 ODx.312 Wx.937	STOCK	2
13	PIN, HYD CYL FLOW CONTR.	0240164	2
14	HYD CYLINDER - FLOW CONTR.	0330278	2
15	PIN, FLOW CONTROL PLT	0240165	2
16	SPACER, TUBE-.687 IDx .625 LG	STOCK	6
17	WASHER, FLAT - .625 ID	0353105	6
18	HYD CYLINDER, DUMP INNER	0330158	1
19	PIN, DUMP HYD CYLINDER	0240166	2
20	SET COLLAR, .750 ID	0311006	2

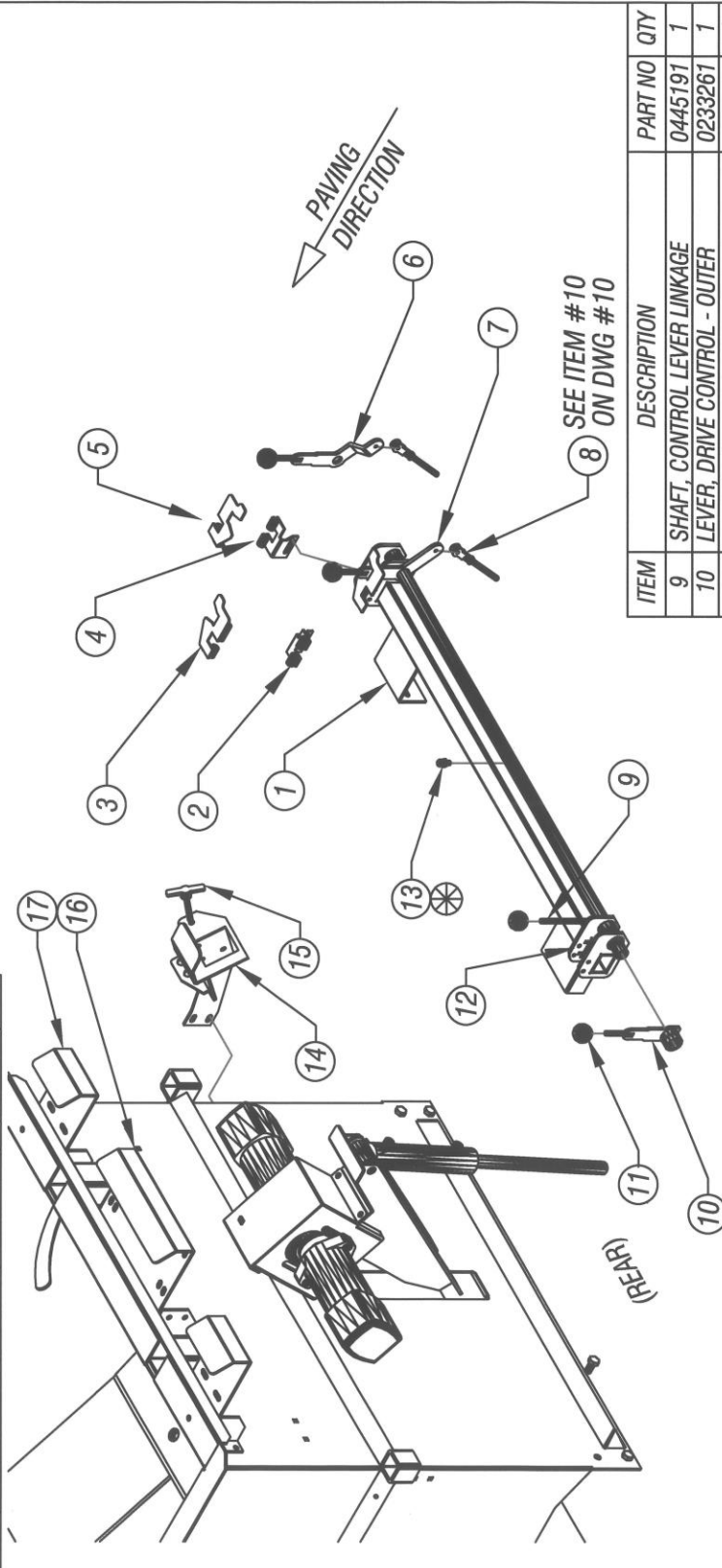


ITEM	DESCRIPTION	PART NO	QTY
1	HOPPER, PAVER DUMP-OUTER	0226199	1
2	HOPPER, PAVER DUMP-INNER	0226198	1
3	PANEL, HOPPER EXTENSION	0261368	4
4	WASHER, .562 ID	0353214	2
5	TUBE, -1"OD x.240 W x.697 LG	STOCK	2
6	PLATE, MAT'L FLOW CONTROL	0290316	1
7	HEX LOCK NUT	0338104	4
8	SPACER, (.179 THICK)	0449279	2
9	SPACER, (.250 THICK)	0449280	2

TP44-TD - DWG #8

REV	DESCRIPTION	DATE

ITEM	DESCRIPTION	PART NO	QTY
1	MOUNT, CONTROL LEVER LINKAGE (RIGHT)	0276897	1
2	BRACKET, NEUT. SAFE LATCH MTG- LEFT	0276558	1
3	LATCH, NEUTRAL SAFETY - LEFT	0233205	1
4	BRACKET, NEUT. SAFE LATCH MTG-RIGHT	0276559	1
5	LAYCH, NEUTRAL SAFETY - RIGHT	0233206	1
6	SHAFT, DRIVE CONTROL LEVER - 44" REAR	0248386	1
7	TUBE, DRIVE CONTROL LEVER SHAFT	0267694	1
8	PUSH / PULL CABLE ASSY (TRACK DRIVE)	0308036	2



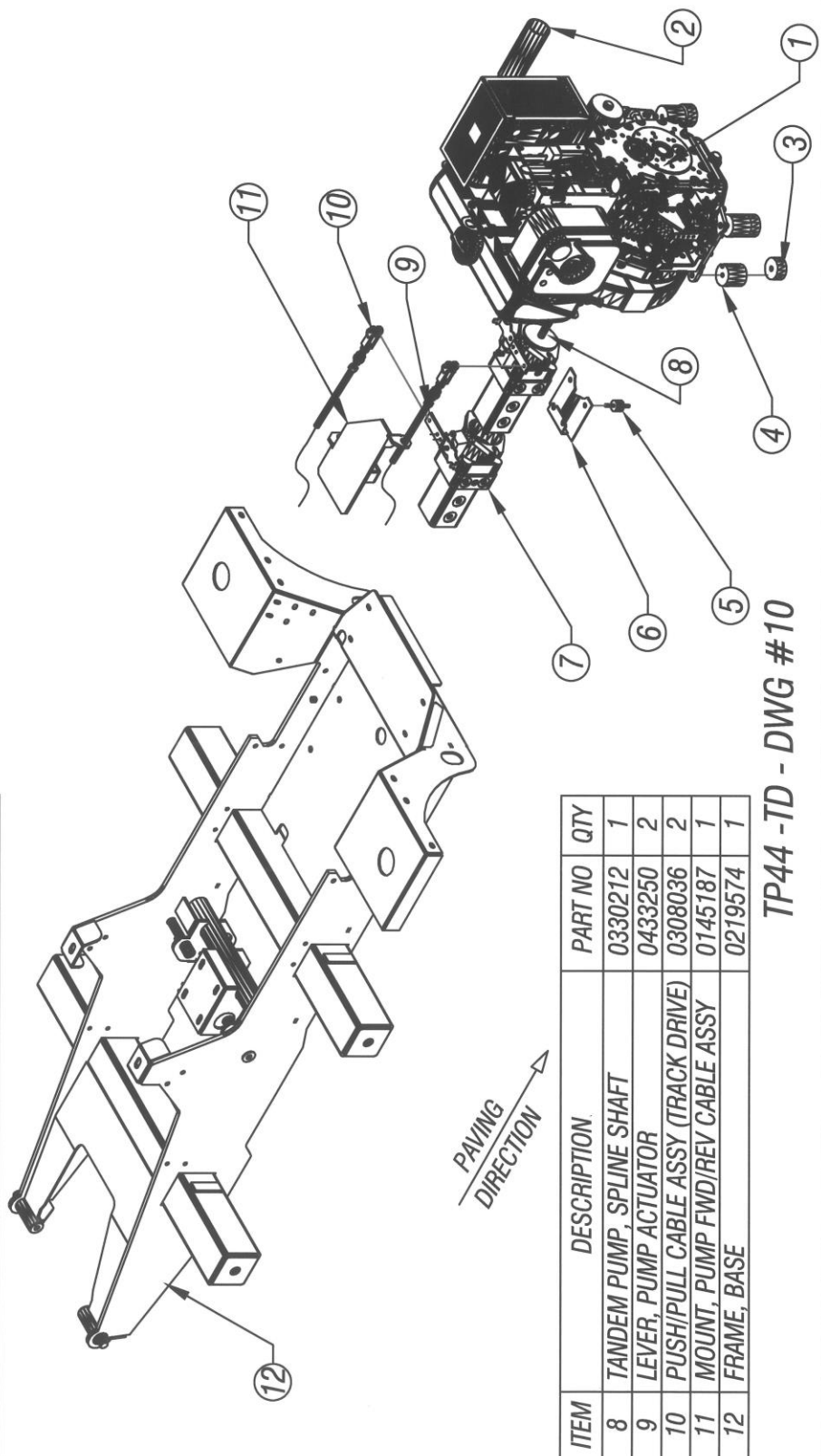
ITEM	DESCRIPTION	PART NO	QTY
9	SHAFT, CONTROL LEVER LINKAGE	0445191	1
10	LEVER, DRIVE CONTROL - OUTER	0233261	1
11	HAND KNOB, BLACK	0332005	4
12	MOUNT, CONTROL LEVER LINKAGE - RIGHT	0276787	1
13	GREASE FITTINGS	0317355	26
14	BRKT, ENG. IGNITION BOX & CONTR. CABLE	0288044	1
15	THROTTLE CABLE, T-HANDLE LOCKING	0308040	1
16	BRACKET, 5-SECTION VALVE MOUNTING	0488023	1
17	BRACKET, AUGER CONTR. VALVE MOUNTG	0488022	2

TP44-TD - DWG #9

⊗ ALL GREASE POINTS ON THE PAVER ARE IDENTIFIED
 GREASE →

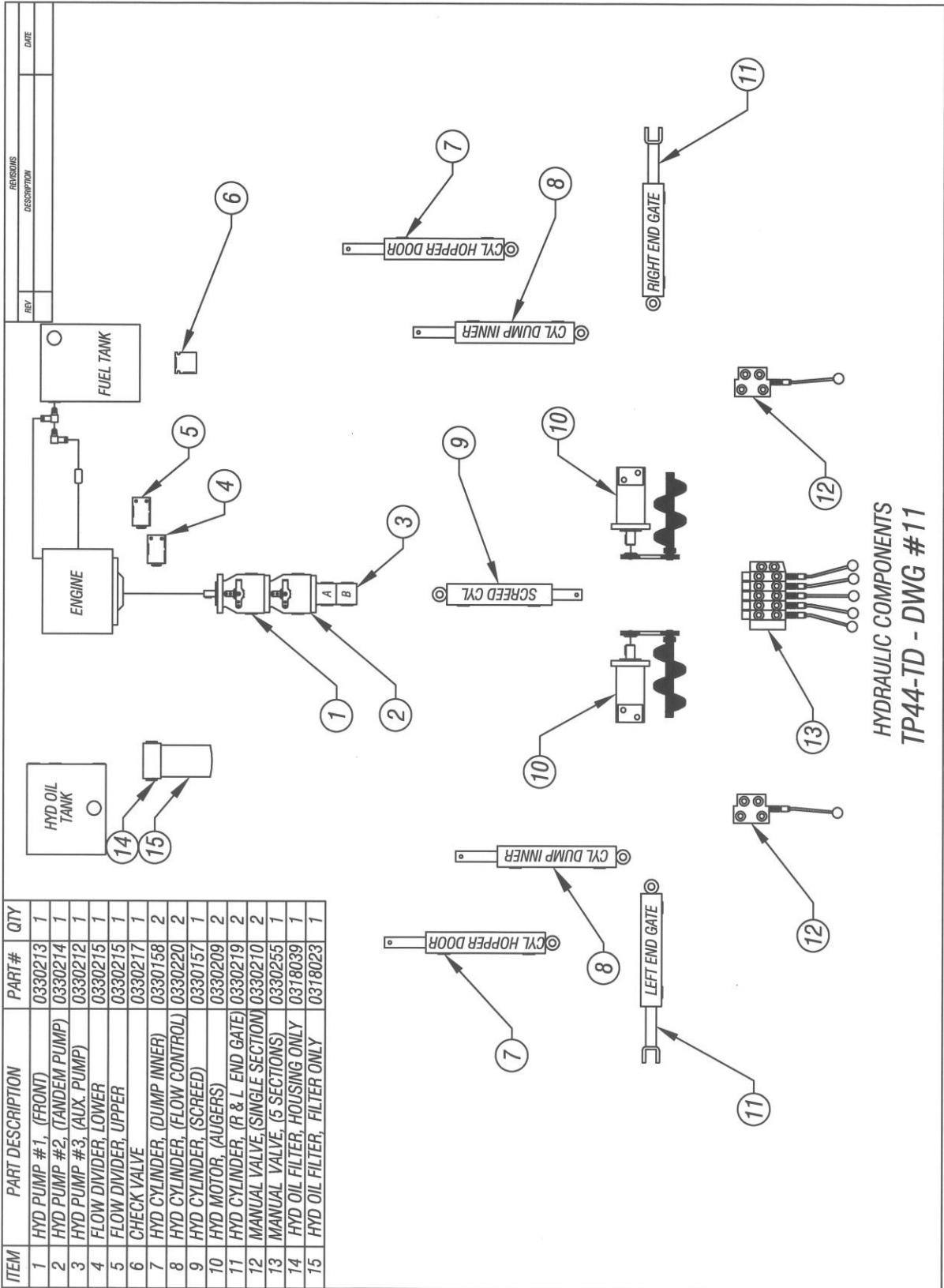
REV	DESCRIPTION	DATE

ITEM	DESCRIPTION	PART NO	QTY
1	ENGINE, HATZ - 14HP (SUPRA DIESEL)	0337550	1
2	EXHAUST PIPE	0237558	1
3	RUBBER MOUNT- (2 DIA x 1" THICK)	STOCK	4
4	SPACER, ENGINE MOUNT (STEEL)	0449281	4
5	RUBBER MOUNT	0376250	2
6	BRACKET, DUAL PUMP MOUNTING-REAR	0288026	1
7	DUAL PUMP, SPLINE SHAFT	0330213	1

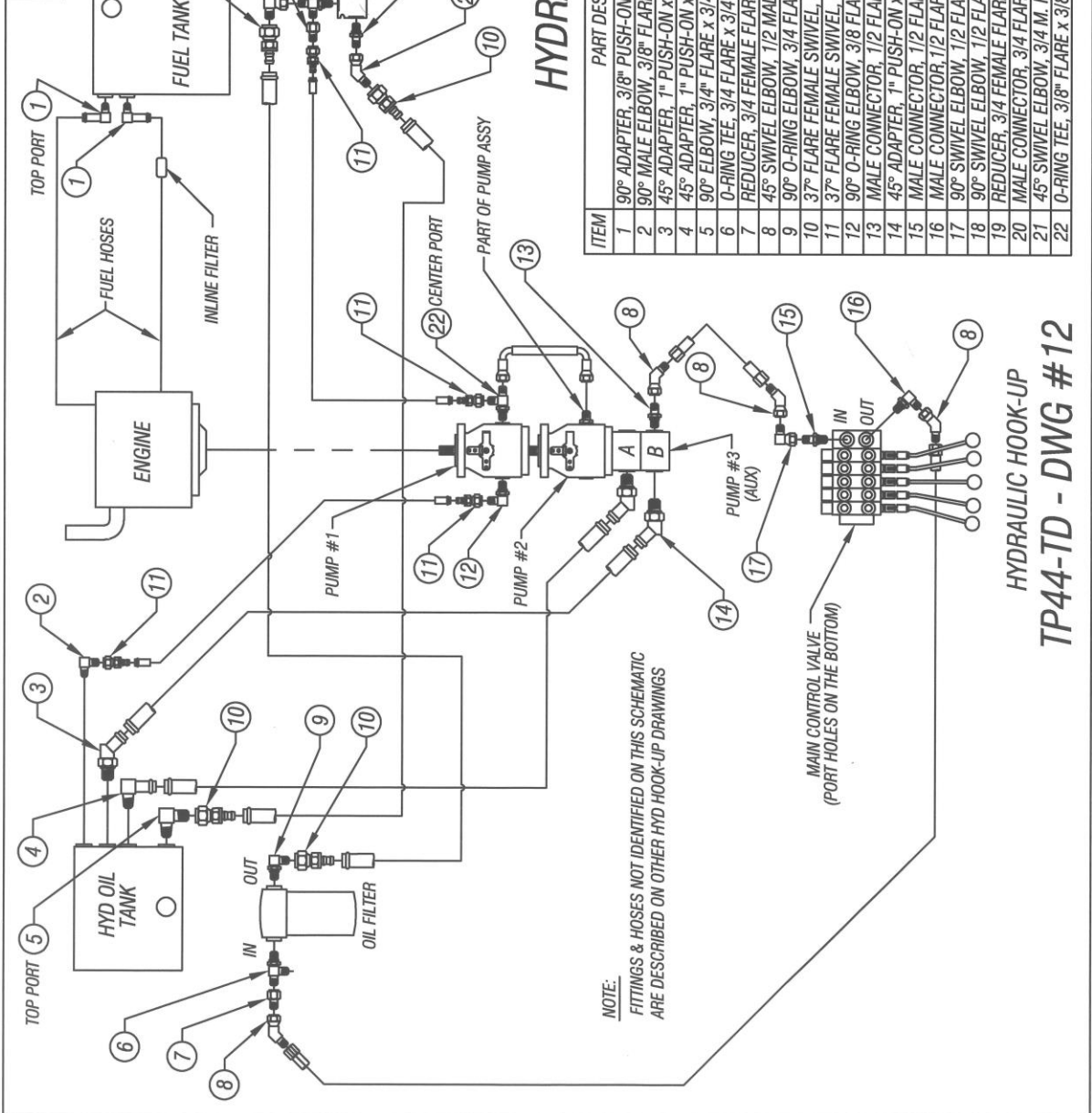


ITEM	DESCRIPTION	PART NO	QTY
8	TANDEM PUMP, SPLINE SHAFT	0330212	1
9	LEVER, PUMP ACTUATOR	0433250	2
10	PUSH/PULL CABLE ASSY (TRACK DRIVE)	0308036	2
11	MOUNT, PUMP FWD/REV CABLE ASSY	0145187	1
12	FRAME, BASE	0219574	1

TP44 -TD - DWG #10



REV	DESCRIPTION	DATE

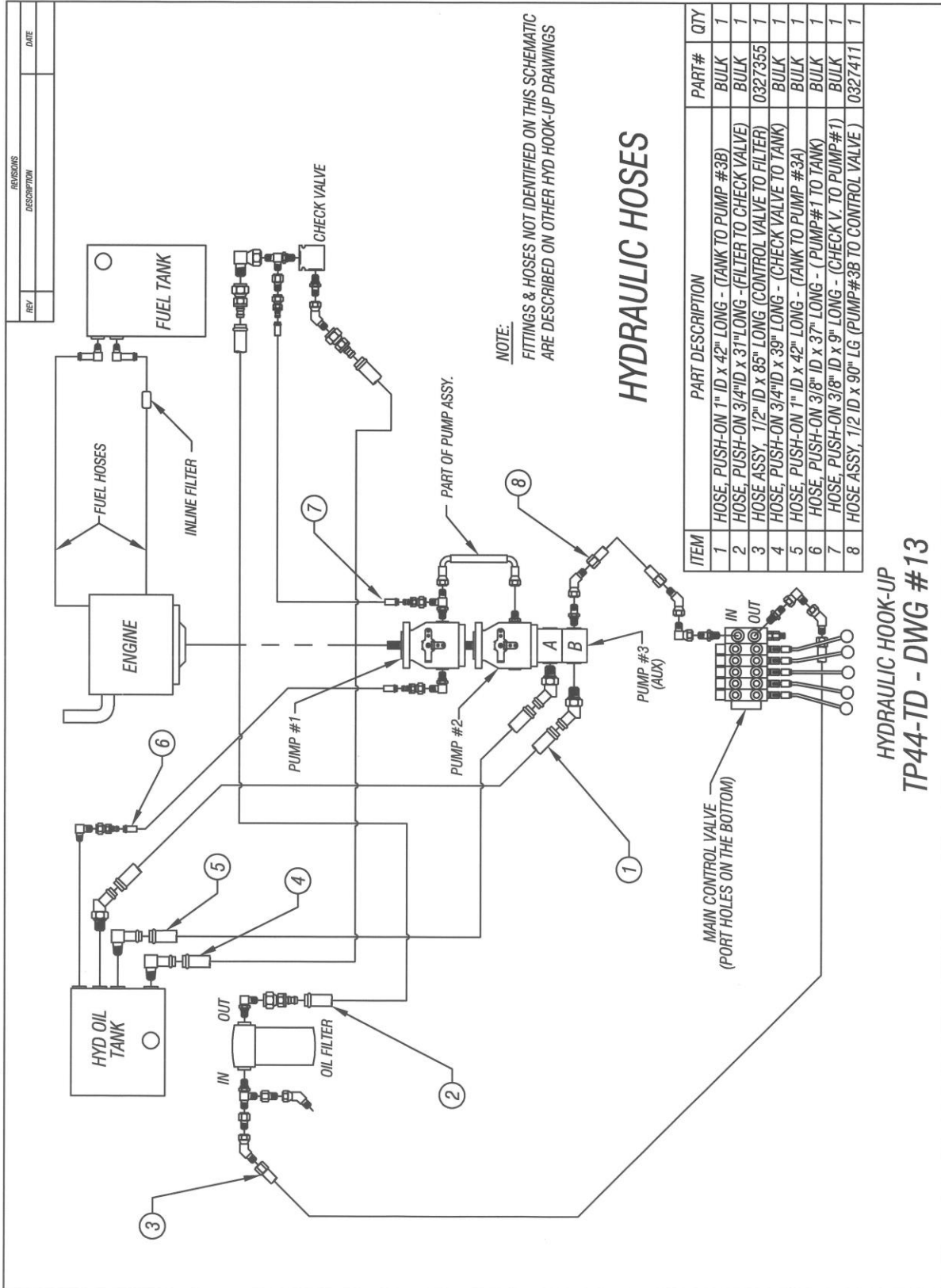


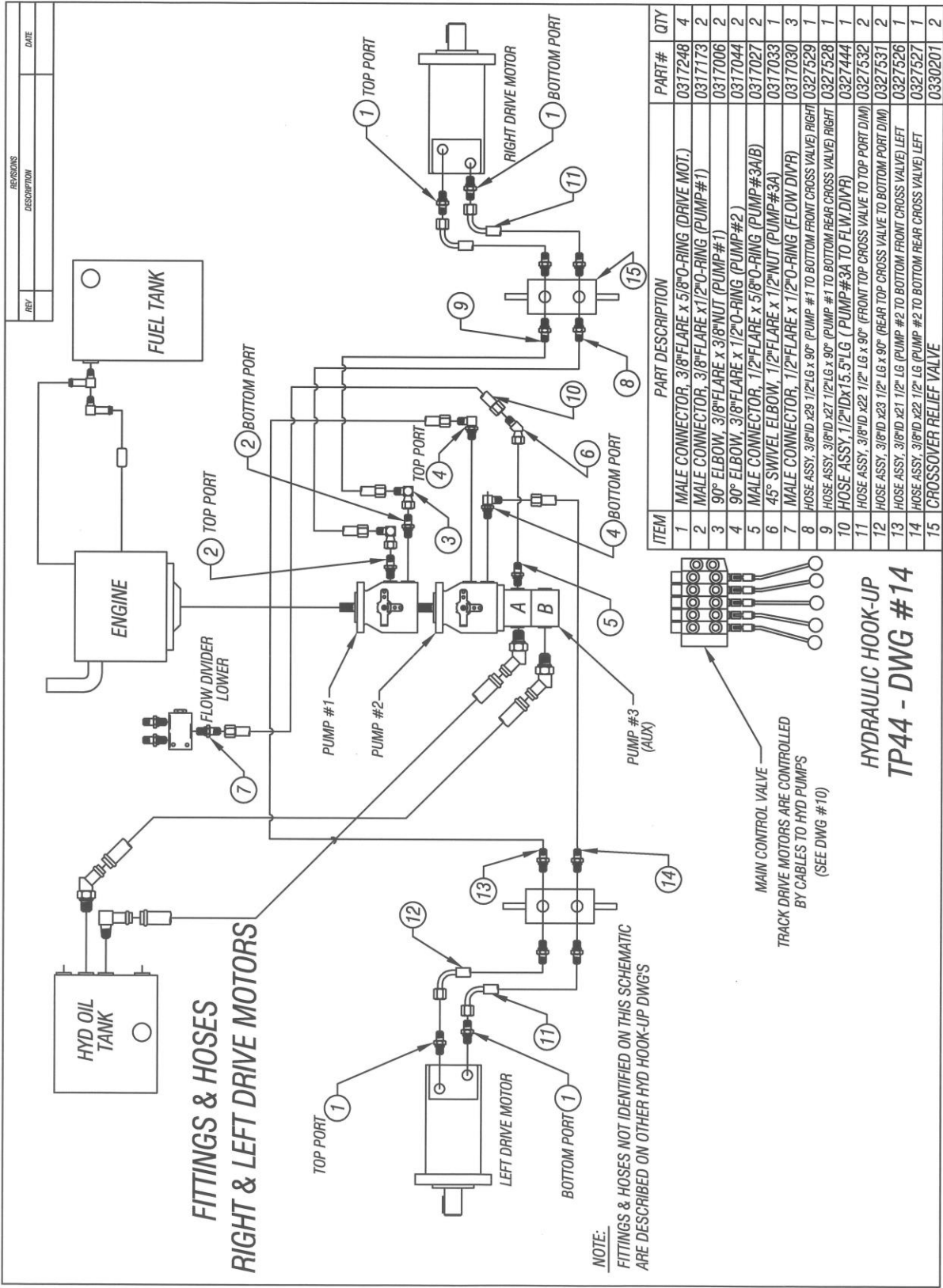
HYDRAULIC FITTINGS

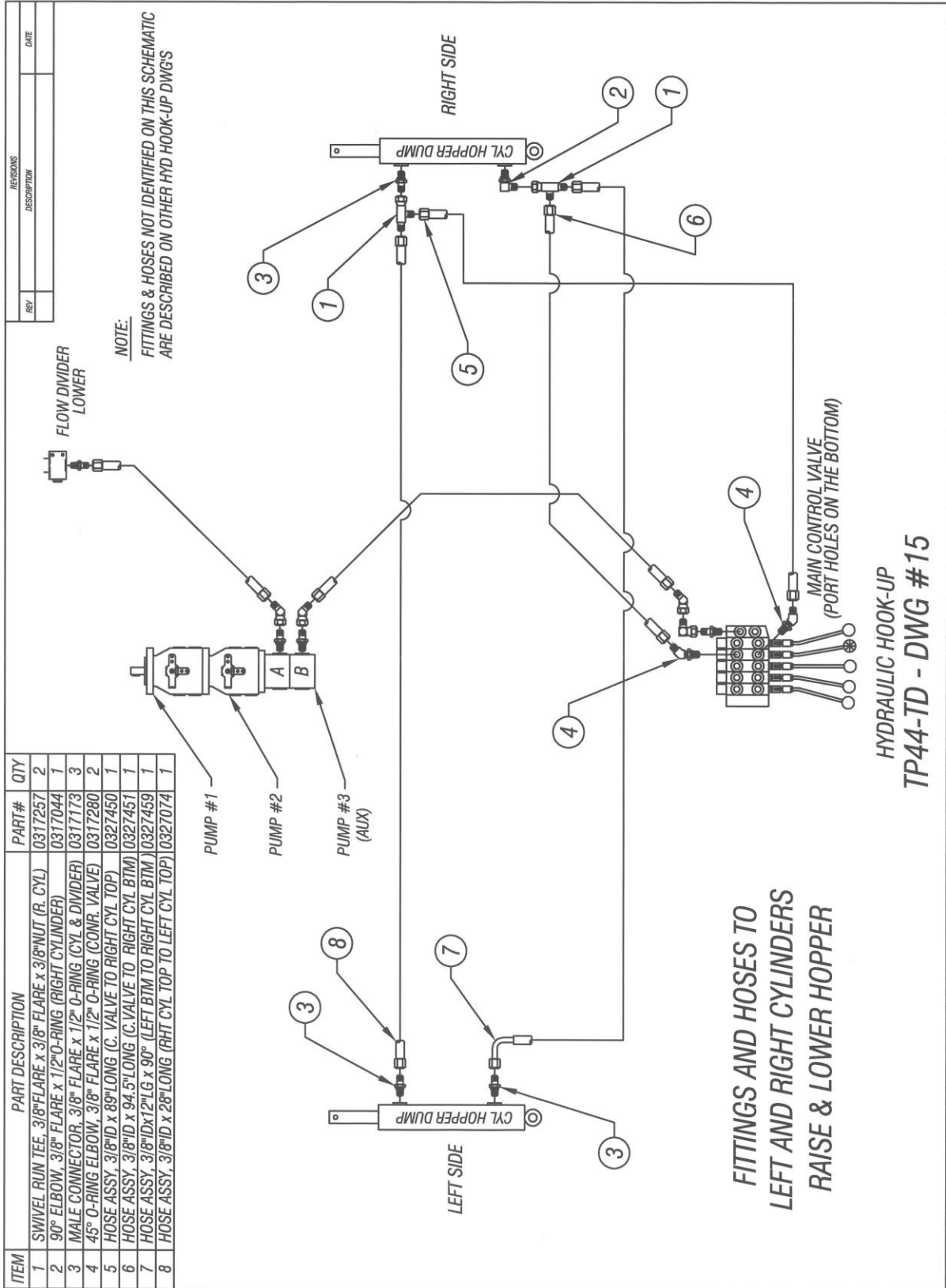
ITEM	PART DESCRIPTION	PART #	QTY
1	90° ADAPTER, 3/8" PUSH-ON x 1/4" MPT - (FUEL TANK)	0317289	2
2	90° MALE ELBOW, 3/8" FLARE x 1/4" MPT - (HYD OIL TANK)	0317046	2
3	45° ADAPTER, 1" PUSH-ON x 3/4" MPT - (HYD OIL TANK)	0317308	1
4	45° ADAPTER, 1" PUSH-ON x 3/4" MPT - (HYD OIL TANK)	0317168	1
5	90° ELBOW, 3/4" FLARE x 3/4" MPT - (HYD OIL TANK)	0317183	1
6	O-RING TEE, 3/4 FLARE x 3/4 O-RING (FILTER & CHECK VALVE)	0317307	2
7	REDUCER, 3/4 FEMALE FLARE x 1/2 MALE FLARE (FILTER)	0317219	1
8	45° SWIVEL ELBOW, 1/2 MALE FLARE x 1/2 FEMALE (FILTER/VALV)	0317033	4
9	90° O-RING ELBOW, 3/4 FLARE x 3/4 O-RING (FILTER)	0317289	1
10	37° FLARE FEMALE SWIVEL, 3/4 FLARE x 3/4 PUSH-ON	0317313	4
11	37° FLARE FEMALE SWIVEL, 3/8 FLARE x 3/8 PUSH-ON	0317295	4
12	90° O-RING ELBOW, 3/8 FLARE x 1/2 O-RING (PUMP#1)	0317044	1
13	MALE CONNECTOR, 1/2 FLARE x 5/8 O-RING (PUMP#3B)	0317027	1
14	45° ADAPTER, 1" PUSH-ON x 3/4" MPT - (PUMP#3A & #3B)	0317308	2
15	MALE CONNECTOR, 1/2 FLARE x 5/8 O-RING (CONTR. VALVE-IN)	0317027	1
16	MALE CONNECTOR, 1/2 FLARE x 5/8 O-RING (CONTR. VALVE-OUT)	0317027	1
17	90° SWIVEL ELBOW, 1/2 FLARE x 1/2 NUT (CHECK VALVE)	0317055	2
18	90° SWIVEL ELBOW, 1/2 FLARE x 1/2 NUT (CHECK VALVE-IN)	0317237	1
19	REDUCER, 3/4 FEMALE FLARE x 3/8 MALE FLARE (CONTR. VALVE)	0317310	1
20	MALE CONNECTOR, 3/4 FLARE x 3/4 O-RING (CHECK VALVE)	0317309	1
21	45° SWIVEL ELBOW, 3/4 M. FLARE x 3/4 FEMALE (CHECK VALVE)	0317246	1
22	O-RING TEE, 3/8" FLARE x 3/8" O-RING (PUMP#1)	0317095	1

NOTE:
FITTINGS & HOSES NOT IDENTIFIED ON THIS SCHEMATIC
ARE DESCRIBED ON OTHER HYD HOOK-UP DRAWINGS

HYDRAULIC HOOK-UP TP44-TD - DWG #12

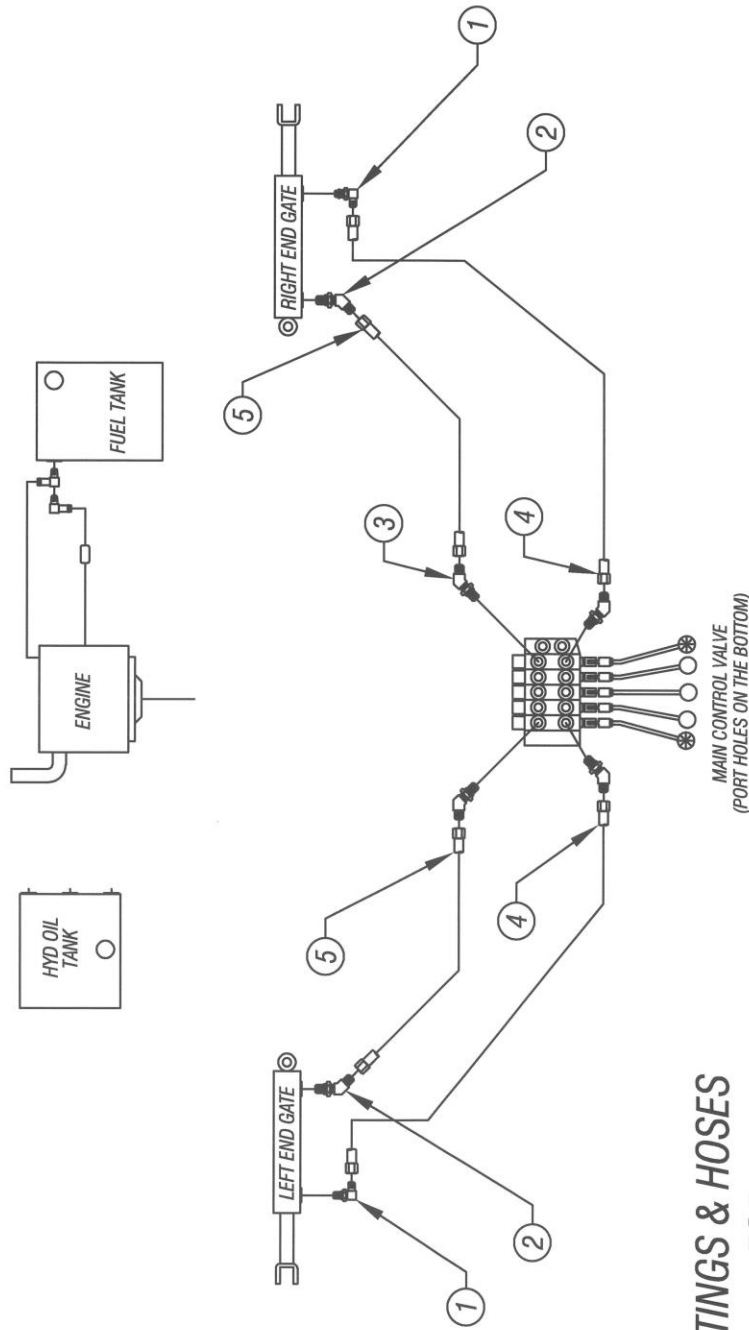






REV	DESCRIPTION	DATE

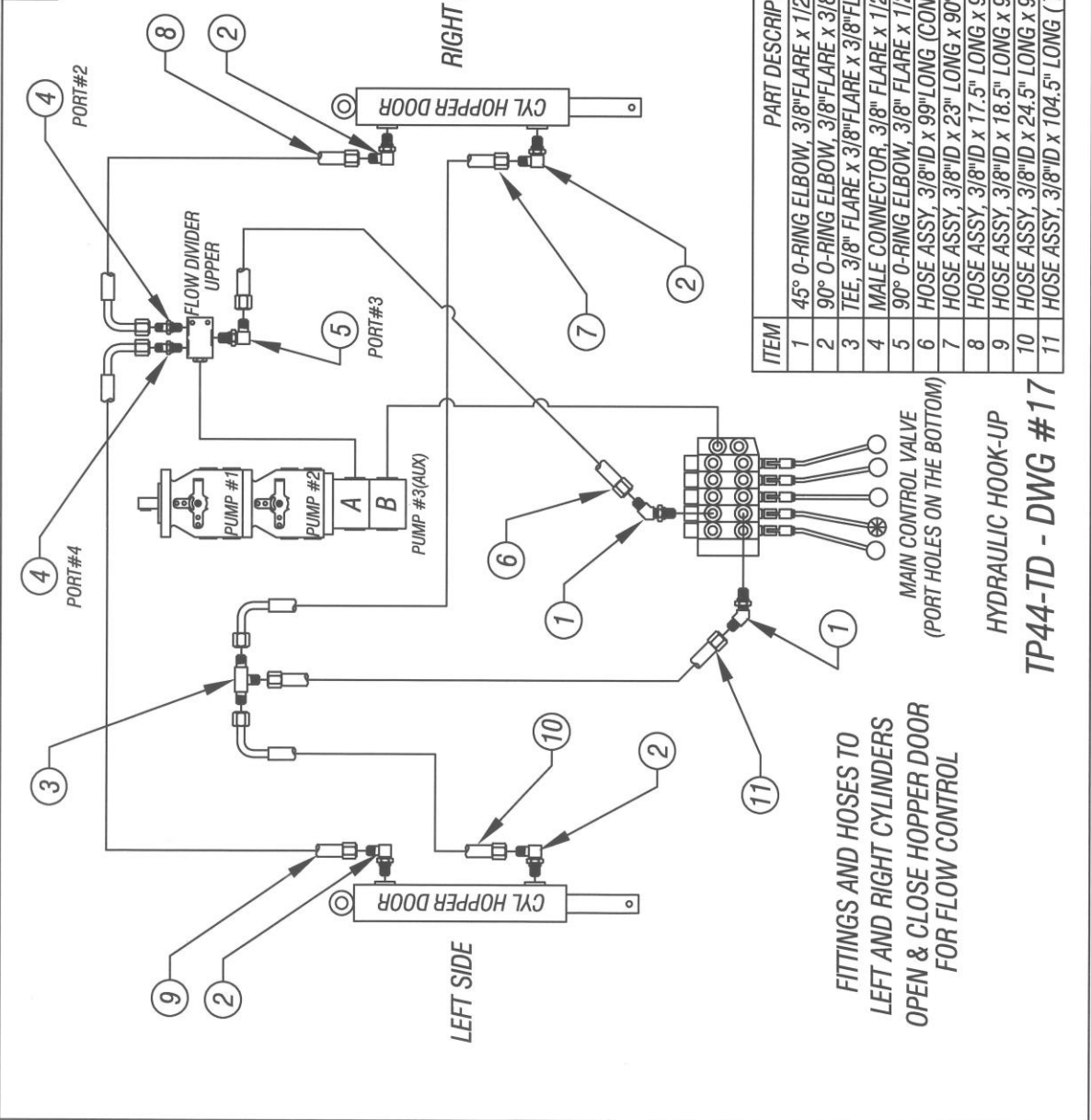
ITEM	PART DESCRIPTION	PART #	QTY
1	90° ELBOW, 3/8" FLARE x 3/8" O-RING (LEFT & RIGHT GATE CYL)	0317029	2
2	45° ELBOW, 3/8" FLARE x 3/8" O-RING (LEFT & RIGHT GATE CYL)	0317065	2
3	45° ELBOW, 3/8" FLARE x 1/2" O-RING (MAIN CONTROL VALVE)	0317280	4
4	HOSE ASSY, 3/8" ID x 53" LONG (CONTR. VALVE TO TRACK WIDTH CYL)	0327455	2
5	HOSE ASSY, 3/8" ID x 40" LONG (CONTR. VALVE TO TRACK WIDTH CYL)	0327075	2



**FITTINGS & HOSES
FOR
LEFT & RIGHT END GATES**

HYDRAULIC HOOK-UP
TP44-TD - DWG #16

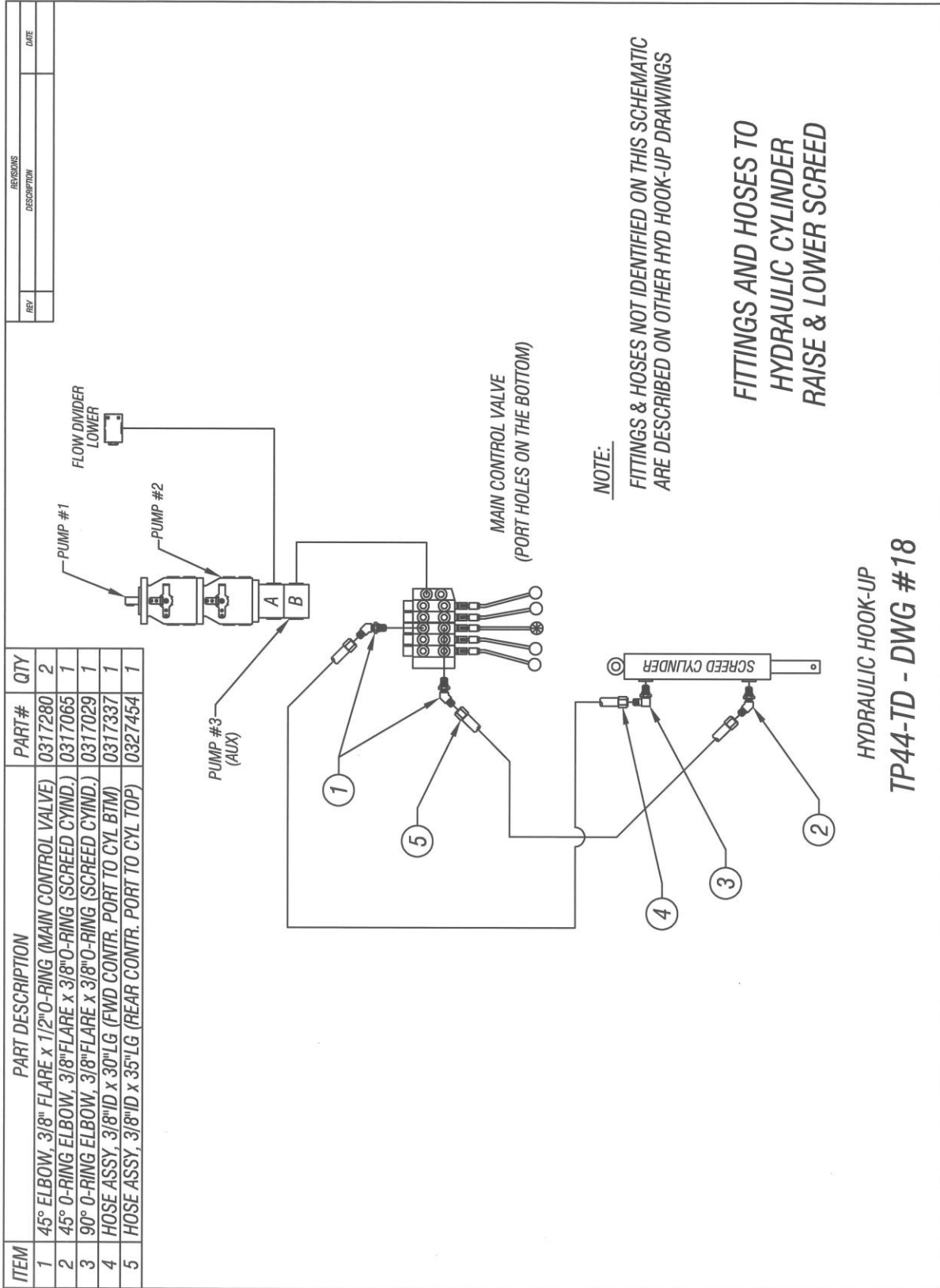
REV	DESCRIPTION	DATE



ITEM	PART DESCRIPTION	PART #	QTY
1	45° O-RING ELBOW, 3/8" FLARE x 1/2" O-RING (CONTR. VALVE)	0317280	2
2	90° O-RING ELBOW, 3/8" FLARE x 3/8" O-RING (CYL H. DOOR)	0317029	4
3	TEE, 3/8" FLARE x 3/8" FLARE x 3/8" FLARE (RETURN HOSES)	0317119	1
4	MALE CONNECTOR, 3/8" FLARE x 1/2" O-RING (FLOW DIVIDER)	0317173	2
5	90° O-RING ELBOW, 3/8" FLARE x 1/2" O-RING (FLOW DIVIDER)	0317044	1
6	HOSE ASSY, 3/8" ID x 99" LONG (CONTR. VAL. TO FLOW DIVIDER)	0327450	1
7	HOSE ASSY, 3/8" ID x 23" LONG x 90° (TEE TO RIGHT SIDE CYL)	0327453	1
8	HOSE ASSY, 3/8" ID x 17.5" LONG x 90° (FLOW DIV. TO RT CYL)	0327459	1
9	HOSE ASSY, 3/8" ID x 18.5" LONG x 90° (FLOW DIV. TO LFT CYL)	0327530	1
10	HOSE ASSY, 3/8" ID x 24.5" LONG x 90° (TEE TO LEFT SIDE CYL)	0327452	1
11	HOSE ASSY, 3/8" ID x 104.5" LONG (TEE TO CONTROL VALVE)	0327451	1

FITTINGS AND HOSES TO LEFT AND RIGHT CYLINDERS OPEN & CLOSE HOPPER DOOR FOR FLOW CONTROL

MAIN CONTROL VALVE (PORT HOLES ON THE BOTTOM)
HYDRAULIC HOOK-UP TP44-TD - DWG # 17

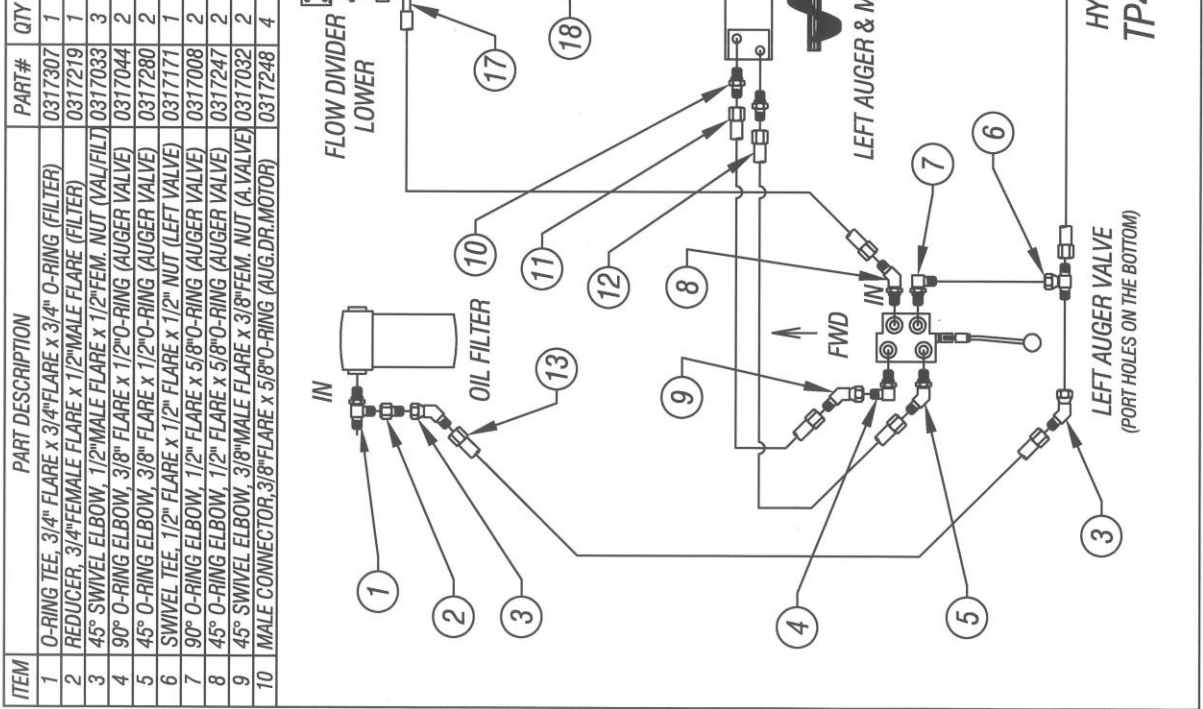


REV	DESCRIPTION	DATE

ITEM	PART DESCRIPTION	PART #	QTY
11	HOSE ASSY, 3/8"ID x 12.5"LONG (LEFT VALVE TO LEFT MOTOR)	0327456	1
12	HOSE ASSY, 3/8"ID x 13.5"LONG (LIV REAR PORT TO L.MOTOR)	0327457	1
13	HOSE ASSY, 1/2"ID x 73"LONG (LEFT AUGER VALVE TO FILTER)	0327446	1
14	HOSE ASSY, 3/8"ID x 13.5"LONG (FWD RT VALVE TO RT MOTOR)	0327457	1
15	HOSE ASSY, 3/8"ID x 12.5"LONG (FWD RT VALVE TO RT MOTOR)	0327456	1
16	HOSE ASSY, 1/2"ID x 31"LONG (RT AUGIVAL TO LEFT AV TEE)	0327445	1
17	HOSE ASSY, 1/2"ID x 94"LONG 90° (FLOW DIVD TO LEFT VALVE)	0327254	1
18	HOSE ASSY, 1/2"ID x 89"LONG 90° (FLOW DIVD TO RT VALVE)	0327447	1

ITEM	PART DESCRIPTION	PART #	QTY
1	O-RING TEE, 3/4" FLARE x 3/4" O-RING (FILTER)	0317307	1
2	REDUCER, 3/4" FEMALE FLARE x 1/2" MALE FLARE (FILTER)	0317219	1
3	45° SWIVEL ELBOW, 1/2" MALE FLARE x 1/2" FEM. NUT (VAL/FILT)	0317033	3
4	90° O-RING ELBOW, 3/8" FLARE x 1/2" O-RING (AUGER VALVE)	0317044	2
5	45° O-RING ELBOW, 3/8" FLARE x 1/2" O-RING (AUGER VALVE)	0317280	1
6	SWIVEL TEE, 1/2" FLARE x 1/2" NUT (LEFT VALVE)	0317171	1
7	90° O-RING ELBOW, 1/2" FLARE x 5/8" O-RING (AUGER VALVE)	0317008	2
8	45° O-RING ELBOW, 1/2" FLARE x 5/8" O-RING (AUGER VALVE)	0317247	2
9	45° SWIVEL ELBOW, 3/8" MALE FLARE x 3/8" FEM. NUT (A. VALVE)	0317032	2
10	MALE CONNECTOR, 3/8" FLARE x 5/8" O-RING (AUG.DR.MOTOR)	0317248	4

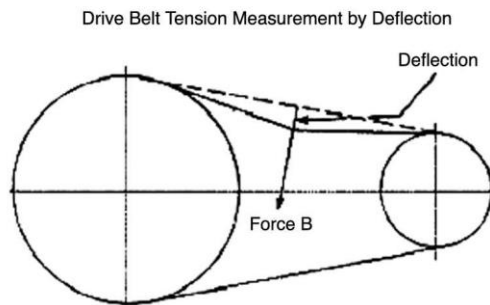
NOTE:
FITTINGS & HOSES NOT IDENTIFIED ON THIS SCHEMATIC
ARE DESCRIBED ON OTHER HYD HOOK-UP DRAWINGS



HYDRAULIC COMPONENTS
TP44-TD - DWG #19

BOLT SIZE	Thds Per Inch	SAE Grade 5	SAE Grade 8
1/4	20 28	10 ---	14 ---
5/16	18 24	19 ---	29 ---
3/8	16 24	33 ---	47 ---
7/16	14 20	54 ---	78 ---
1/2	13 20	78 ---	119 ---
9/16	12 18	114 ---	169 ---
5/8	11 11	154 ---	230 ---
3/4	10 10	257 ---	380 ---
7/8	9 9	382 ---	600 ---
1	8 8	587 ---	700 ---

Below is a quick reference chart for various “Flat Head Cap Screws” and the torque recommendations.



Deflection should be 3/8" when
8-12 lbs. push is applied at "B"

