



MADE IN THE U.S.A

OPERATORS AND PARTS MANUAL MODEL(S) 0005012 & 0005013 TRACK PAVER



MANUFACTURER OF OUTDOOR POWER EQUIPMENT

Products for Turf & Lawncare, Rental Construction, Tree Care, Wood Processing, Nursery & Farm Industries

Other Salsco Equipment:

3-1/2" - 18", Gas, Diesel, and P.T.O. Wood/Brush Chippers

Chipper Shredder Vacuum - Tailgate & Truckloader Vacuums, Strawblowers, Slicer Seeders

Shaving Mills - Gas & Electric Greens Rollers

***Quality of Workmanship, Innovative
Design, Built to Last!***

105 School House Road
Cheshire, CT 06410 U.S.A.
800-872-5726, 203-271-1682, 203-271-2596 (Fax)
sales@salsco.com, www.salsco.com

TABLE OF CONTENTS

MODELS 0005012 & 0005013 TRACK PAVER

COVER & TABLE OF CONTENTS.....	Pages 1 – 2
STATEMENT OF FACT	Page 3
MACHINE REGISTRATION	Page 4
TORQUE CHART	Page 5
OPERATING INSTRUCTIONS	Page 6
PARTS DIAGRAMS	Pages 7 - 13
WARRANTY POLICY/PROCEDURE	Page 14
COPYOF WARRANTY CLAIM FORM.....	Page 15
SERVICE SCHEDULE LOG	Page 16

SALSCO, INC.
105 School House Road
Cheshire, CT 06410
800-872-5726, 203-271-1682
203-271-2596 (Fax)
www.salsco.com, sales@salsco.com

REV. 04.30.10

STATEMENT OF FACT

You have just purchased the highest quality, most dependable, Track Paver on the market today. This unit has the ability to meet exact standards and perform for years with minimum downtime. HOWEVER, it cannot read nor will it understand this manual no matter how long you leave it on top of the machine.

It is your responsibility to read and understand this manual; it is also your responsibility to be certain this information is passed along to anyone who is expected to operate this equipment. Should you choose not to read, understand and pass along the information provided you, please expect equipment failure and possible injuries to persons around this equipment.

For the safety of the operator, it is **imperative** that this manual is carefully read and understood.

Once you have read this manual, it is your responsibility to be sure that all new operators read and understand this manual, especially all cautions stated.

As a manufacturer of equipment, we have a responsibility to design a safe piece of equipment. NOTE: The important safeguards and instructions in this manual are not meant to cover all possible conditions and situations that may occur. It must be understood that common sense, caution, and care are factors, which cannot be built into any product. These factors must be supplied by the person(s) caring for and operating this equipment.

ONLY YOU CAN PREVENT ACCIDENTS!!

MACHINE REGISTRATION

MANUFACTURED BY:

SALSCO, INC.

105 School House Rd., Cheshire, CT 06410

800-872-5726, 203-271-1682, 203-271-2596 (Fax)

sales@salsco.com www.salsco.com

THIS MANUAL COVERS MODEL (s): 0005012 & 0005013 Track Pavers

This company reserves the right to discontinue, add improvements to, or change the design of any model or product at any time without obligation to improve existing machines, either by changing the design or adding new parts.

It has been and will continue to be the policy of SALSCO to update existing machines at its own discretion. Whenever possible, new designs will be made in such a way that they can be "Retro Fit" if so desired.

Record in the space provided below the model and serial number of this unit. Please retain these numbers for future reference.

No parts orders will be accepted **WITHOUT MODEL NUMBERS OR PART NUMBERS**. All part numbers are listed in this manual.

Serial Number

Model Number

NOTE: Be sure to complete your warranty card. This will insure immediate processing of any warranty claims.

READ AND UNDERSTAND THIS MANUAL BEFORE STARTING THE MACHINE

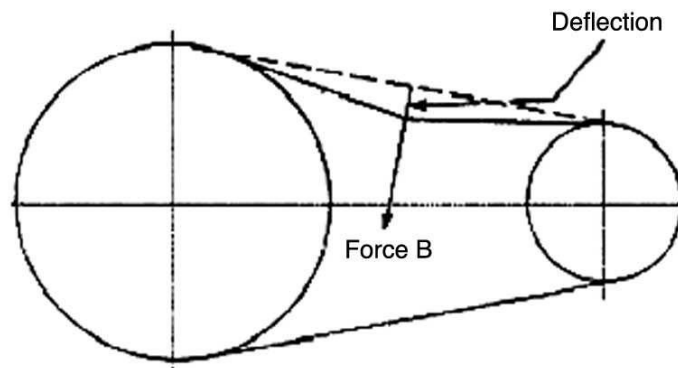
1/06

Below is a quick reference chart for various “Flat Head Cap Screws” and the torque recommendations.

VALUES ARE STATED IN FOOT POUNDS

BOLT SIZE	Thds Per Inch	SAE Grade 5	SAE Grade 8
1/4	20	10	14
	28	---	---
5/16	18	19	29
	24	---	---
3/8	16	33	47
	24	---	---
7/16	14	54	78
	20	---	---
1/2	13	78	119
	20	---	---
9/16	12	114	169
	18	---	---
5/8	11	154	230
	11	---	---
3/4	10	257	380
	10	---	---
7/8	9	382	600
	9	---	---
1	8	587	700
	8	---	---

Drive Belt Tension Measurement by Deflection



Deflection should be 3/8" when 8-12 lbs. push is applied at "B"

TRACK PAVER OPERATION

IT IS HIGHLY RECOMMENDED TO USE ONLY SUPER GUARD 20W-50 HYD. OIL

READ THIS MANUAL BEFORE STARTING. NEVER LET ANYONE NOT PROPERLY TRAINED OPERATE THIS MACHINE. BE SURE NO ONE THAT IS NOT FAMILIAR WITH THE OPERATION OF THIS MACHINE IS IN THE VICINITY WHEN READY TO START UP THE UNIT.

Prior to Starting:

Drive controls **MUST** be in neutral and locked.

ALL packaging & shipping materials are removed.

ALL fluid levels are filled to manufacturers specifications. (Check engine manual for proper levels)

CAUTION: TO STOP ENGINE PUSH THE THROTTLE IN!

Start Engine – Check Controls

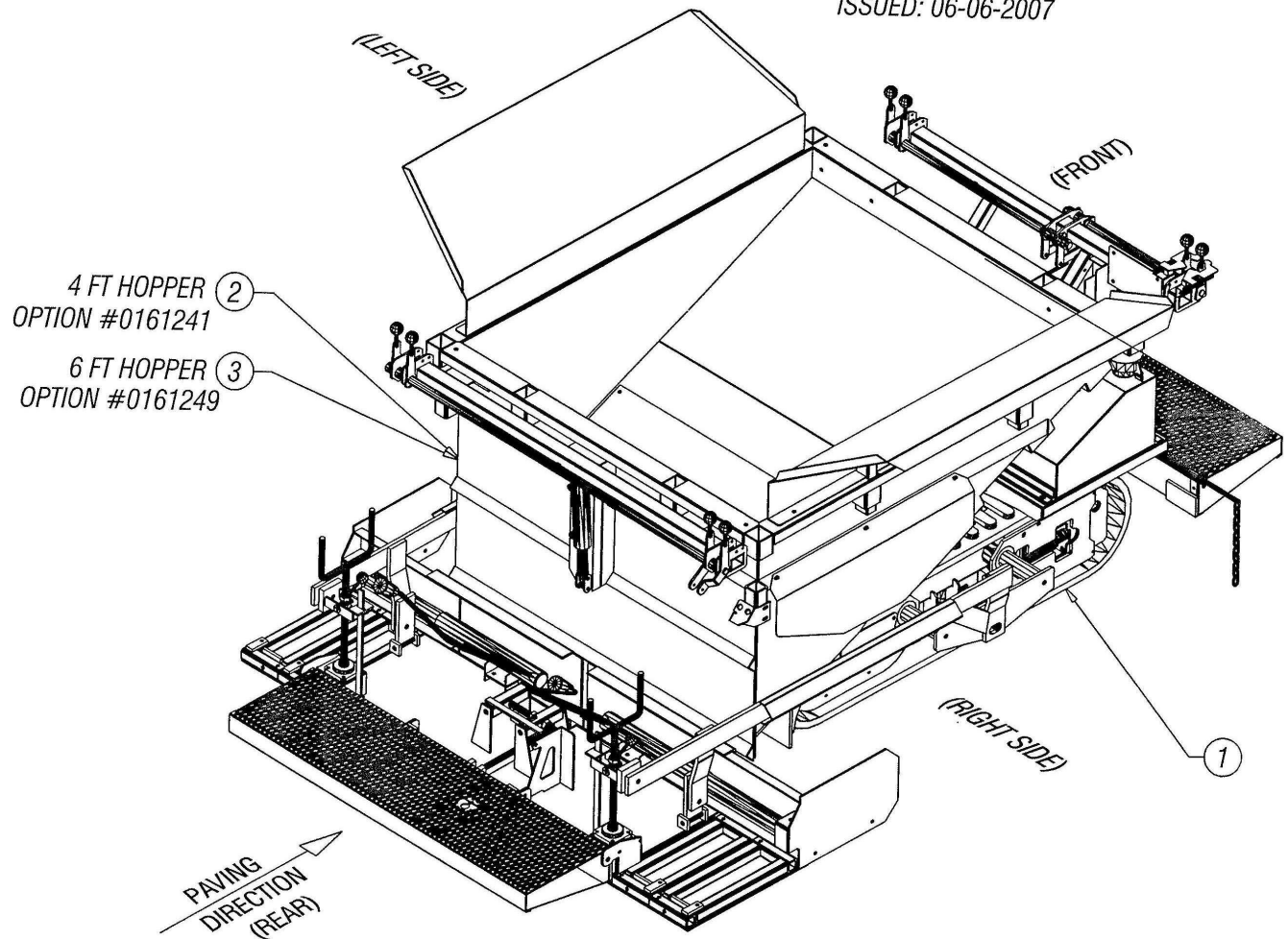
- 1) Turn the throttle to unlock and pull to $\frac{3}{4}$ full.
- 2) Turn key to preheat and then to the start position.
- 3) Once the engine starts, turn and push the throttle in to just above idle.
- 4) Move the hopper raise/lower handle.
- 5) Move the screed raise/lower handle.
- 6) Move the hopper door, open/close.
- 7) Unlock the forward-reverse locks.
- 8) Move the travel levers a little to get the feel of the machine. Let the unit creep along slow walk to another control position and try to control the machine from different positions.
- 9) Move the tracks, open/close. **NOTE: THIS SHOULD ONLY BE MOVED WHILE THE UNIT IS TRAVELING.**
- 10) Raise the throttle and get used to driving and steering the machine.

Getting Ready to Pave

- 1) Oil the machine with environmentally friendly oil.
- 2) Assume you wish to pave to a depth of 2".
- 3) Lay 2" x 4" board under the screed and lower the screed cylinder till the chain is loose.
- 4) Adjust the screed screws till the screed is flat on the 2" x 4" then adjust it a little more so as to make it climb towards the hopper.
- 5) Adjust the end gates to the proper width. Attach the screed extensions if needed.
- 6) Open the cut off door in the hopper.
- 7) Fill the hopper with hot asphalt.
- 8) Move the machine forward a couple of feet. Let the hot material set under the screed.
- 9) After approximately 4-5 minutes you are ready to pave.
- 10) Only use the Hydraulic Cylinder to raise the screed when you are moving the machine without paving. If you are paving, the cylinder should be in free float position.
- 11) Adjust to a slow paving speed. Only move as fast as you can to keep the hopper filled.
- 12) Adjust the screed screws as needed to get the proper thickness.
- 13) Maintain ground speed!

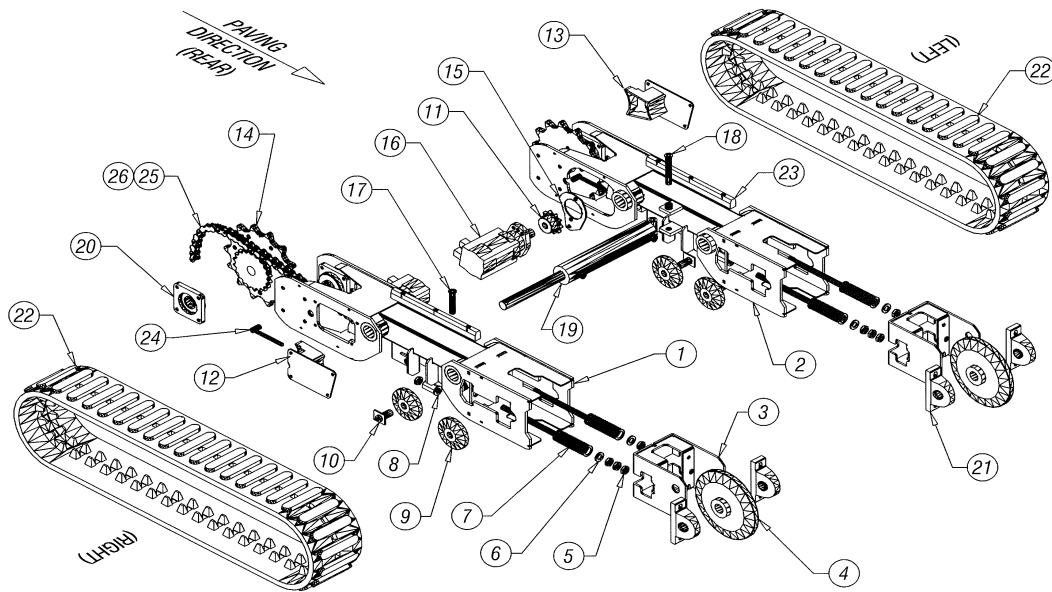
NOTE: THE TRICK TO THIS MACHINE IS TO KEEP A SLOW GROUND SPEED AND KEEP THE HOPPER $\frac{3}{4}$ FULL.

ISSUED: 06-06-2007



TRACK PAVER
BASIC MACHINE WITH ENGINES & HOPPER OPTIONS
DWG #1

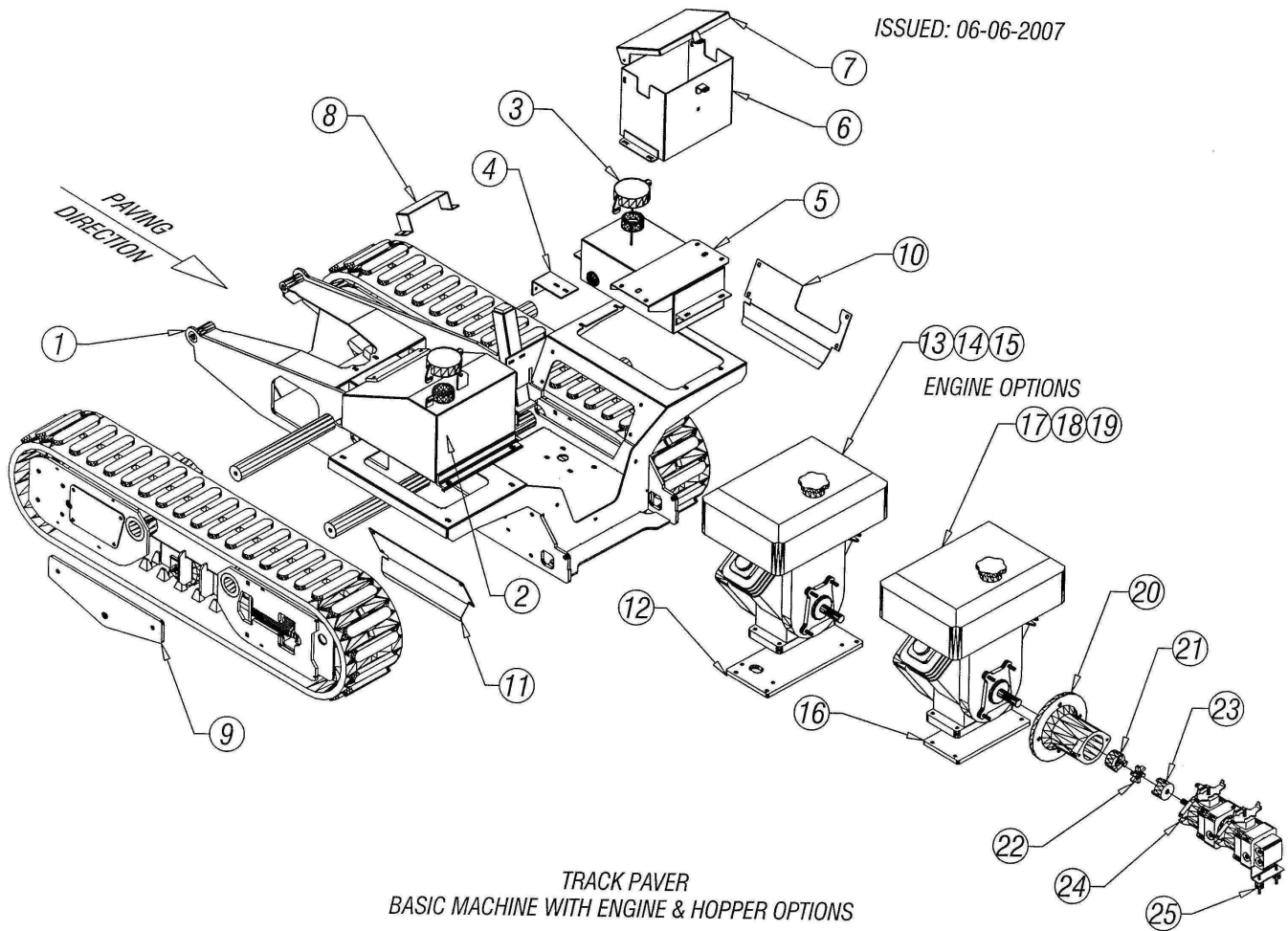
DRAWING # 1			
ITEM #	DESCRIPTION	PART #	QTY.
1	Track Paver, Basic Machine	0009057	1
2	4' Hopper, Option	0161241	1
3	6' Hopper, Option	0161249	1



TRACK PAVER
BASIC MACHINE WITH ENGINE & HOPPER OPTIONS
DWG. #2

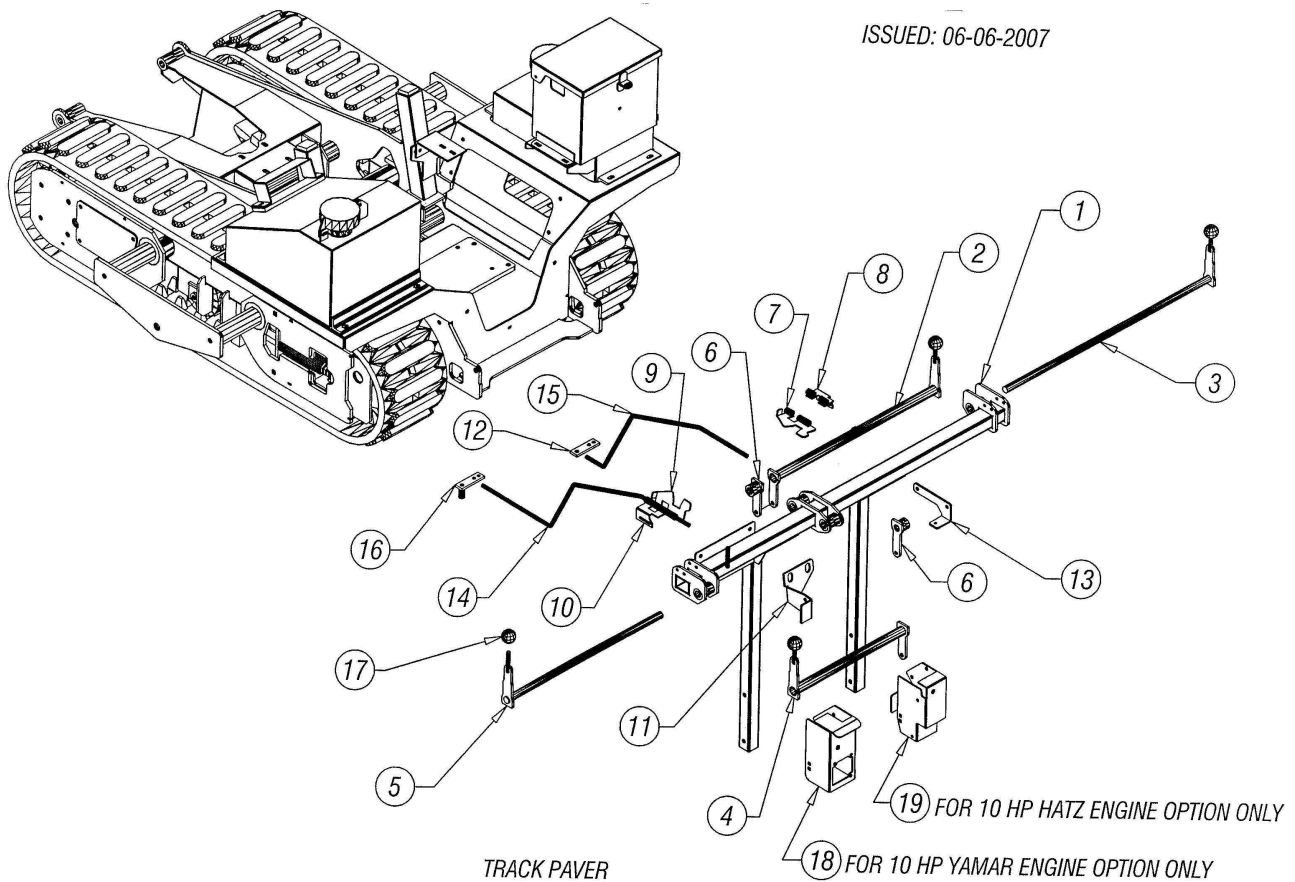
DRAWING # 2			
ITEM #	DESCRIPTION	PART #	QTY.
1	Frame, Track Drive, Right	0219383	1
2	Frame, Track Drive, Left	0219384	1
3	Adjuster, Idler Tension	0201029	2
4	Wheel, Track Idler, Main	0254104	2
5	Nut, Hex Jam - 3/4-10	0338056	16
6	Flat Washer, 3/4" S.A.E.	0353149	4
7	Spring, Compression-13 Coil	0350044	4
8	Nut, Track Adjuster Coupling	0238506	4
9	Wheel, Track Idler, Center	0454110	4
10	Tube, Idler Mounting	0267429	4
11	Sprocket, Hyd Drive Motor	0251177	2
12	Cover, Chain Access, Right	0271303	1
13	Cover, Chain Access, Left	0271302	1
14	Sprocket, Track Drive	0251171	2
15	Spacer, Hydraulic Drive Motor	0449210	2
16	Hydraulic Drive Motor	0330169	2
17	Pin, Track Width Cylinder, Right	0240133	1
18	Pin, Track Width Cylinder, Left	0240131	1
19	Hydraulic Cylinder, 12" Stroke	0330159	1
20	Bearing, 4-Bolt Flanged	0303002	4
21	Bearing, Pillow Block	0303057	4
22	Drive Tread	0354102	2
23	Guide, Track Drive, Upper	0422162	2
24	Adjuster, Track Drive Motor	0201034	2
25	Drive Chain, #80 x 33 Pitches	0309079	2
26	#80 Master Link	0309038	2

ISSUED: 06-06-2007



TRACK PAVER
BASIC MACHINE WITH ENGINE & HOPPER OPTIONS
DWG. #3

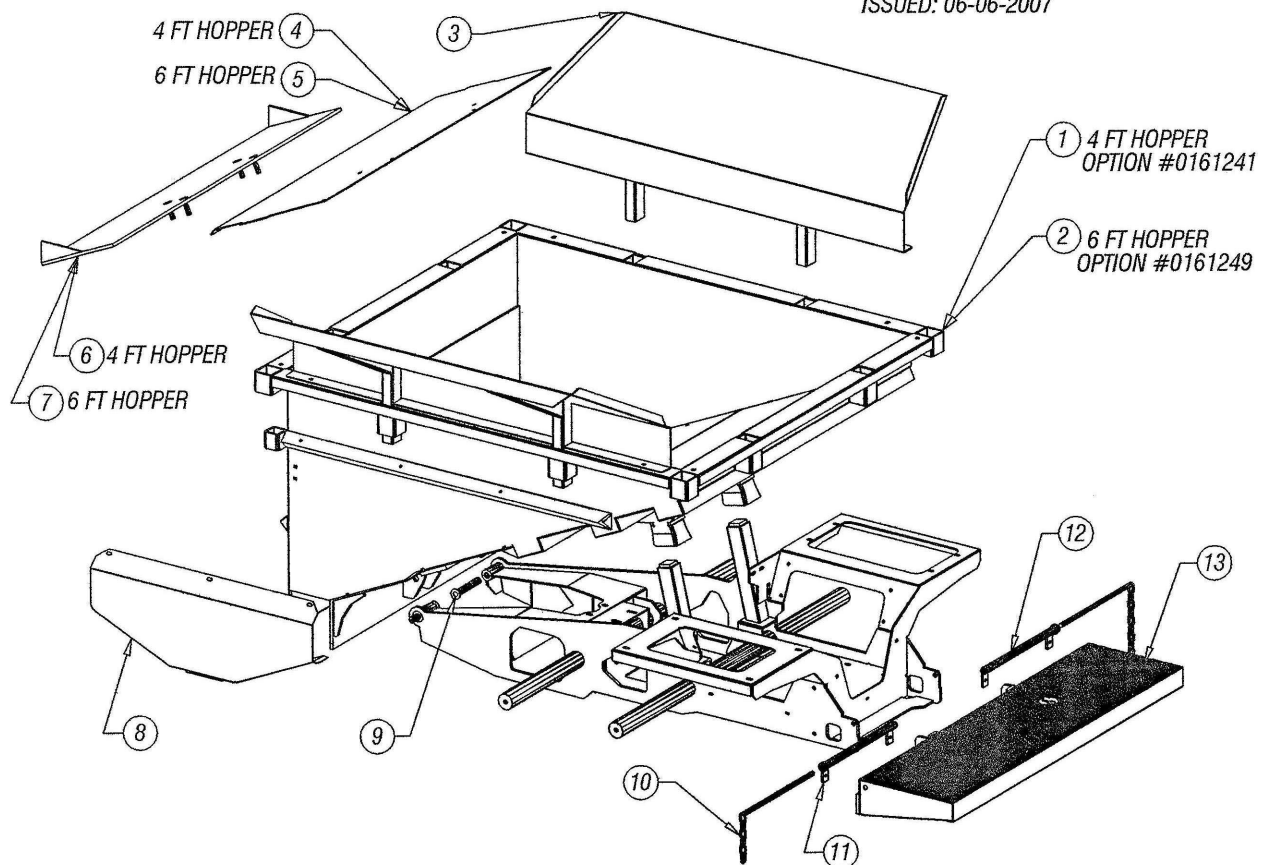
DRAWING # 3							
ITEM #	DESCRIPTION	PART #	QTY.	ITEM #	DESCRIPTION	PART #	QTY.
1	Frame, Base	0219352	1	14	Exhaust Pipe, Modified, Hatz	0237414	1
2	Tank, Fuel, 6.3 Gallons	0252094	1	15	Box, Throttle Control, Hatz	0280048	1
3	Cap, Gas/Oil Fill Locking	0271024	2	16	Plate, Engine Mounting, Yanmar 10HP	0462309	1
4	Bracket, Oil Filter Mounting	0406823	1	17	Engine, Yanmar 10HP (Option)	0137443	1
5	Tank, Hydraulic	0252093	1	18	Exhaust Pipe, Modified, Yanmar	0237401	1
6	Box, Battery	0280001	1	19	Box, Throttle Control, Yanmar	0280047	1
7	Cover, Battery Box	0271020	1	20	Bell Housing	0328059	1
8	Bracket, Hydraulic Hose Fastening	0406868	1	21	Hub, L-Type, 1" Bore	0329094	1
9	Bracket, Screed Lift Arm	0406805	2	22	Sox (Spider), Open Center	0329095	1
10	Cover, Frame Side, Left	0471291	1	23	Hub, L-Type, 7/8" Bore	0329093	1
11	Cover, Frame Side, Right	0471292	1	24	Pump, Tandem Hydro Gear	0330154	1
12	Plate, Engine Mounting, Hatz 10HP	0462441	1	25	Rubber Mount	0376319	2
13	Engine, Hatz 10HP (Option)	0137444	1				



TRACK PAVER
BASIC MACHINE WITH ENGINE & HOPPER OPTIONS
DWG. #4

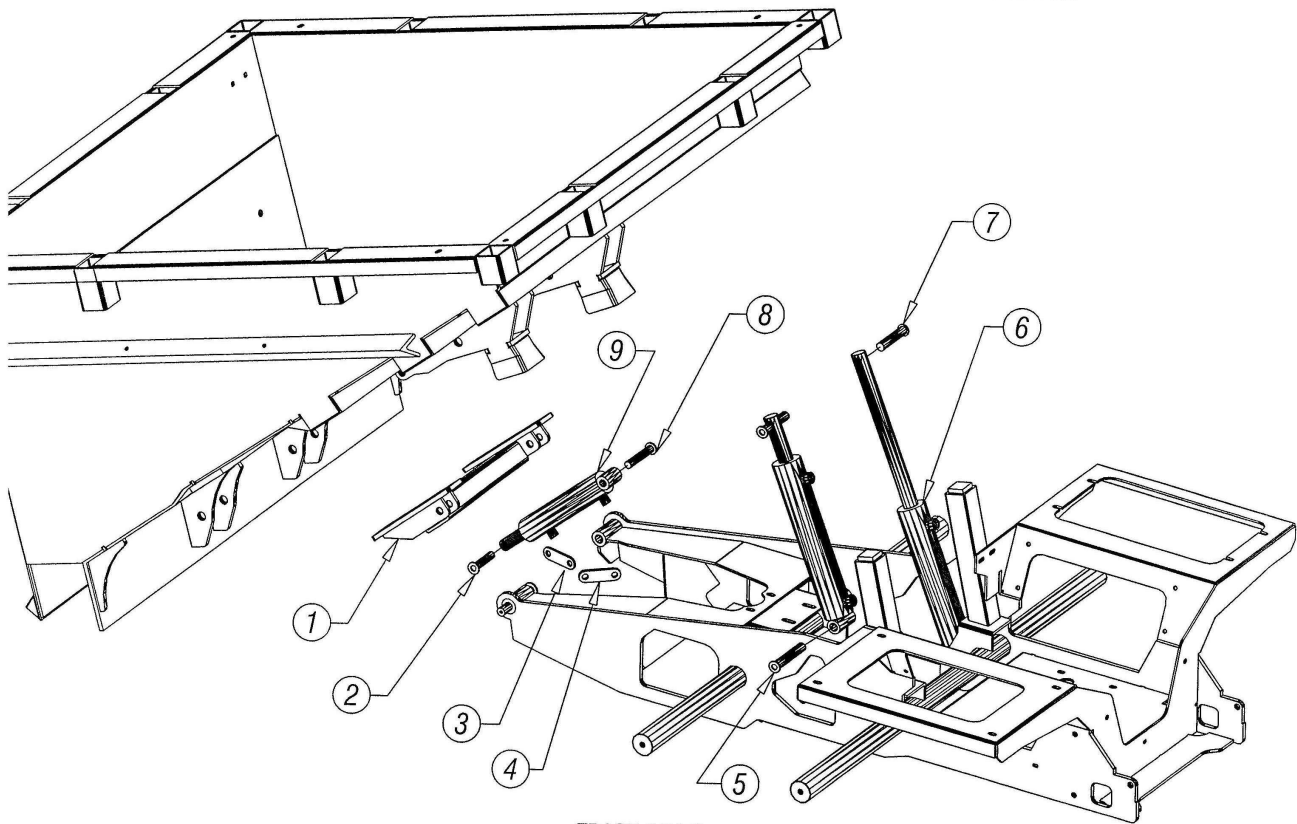
DRAWING # 4			
ITEM #	DESCRIPTION	PART #	QTY.
1	Mount, Control Lever Linkage	0276555	1
2	Tube, Drive Control Lever-Long	0267381	1
3	Shaft, Drive Control Lever-Long	0248260	1
4	Tube, Drive Control Lever-Short	0267382	1
5	Shaft, Drive Control Lever-Short	0248261	1
6	Lever, Drive Control Rod Link	0233189	2
7	Latch, Neutral Safety-Left	0233205	1
8	Bracket, Neutral Safety Latch Mounting, Left	0276558	1
9	Latch Neutral Safety-Right	0233206	1
10	Bracket, Neutral Safety Latch Mounting, Right	0276559	1
11	Mount, Rear Forward/Reverse Cable	0476575	1
12	Lever, Hydraulic Pump	0433200	1
13	Link, Track Paver-Lower	0434067	2
14	Rod, Hydraulic Pump-Rear	0445170	1
15	Rod, Hydraulic Pump-Front	0445169	1
16	Lever, Hydraulic Pump-Front	0233199	1
17	Hand Knob, Black	0332005	10
18	Box, Throttle Control-Yanmar	0280047	1
19	Box, Throttle Control-Hatz	0280048	1

ISSUED: 06-06-2007



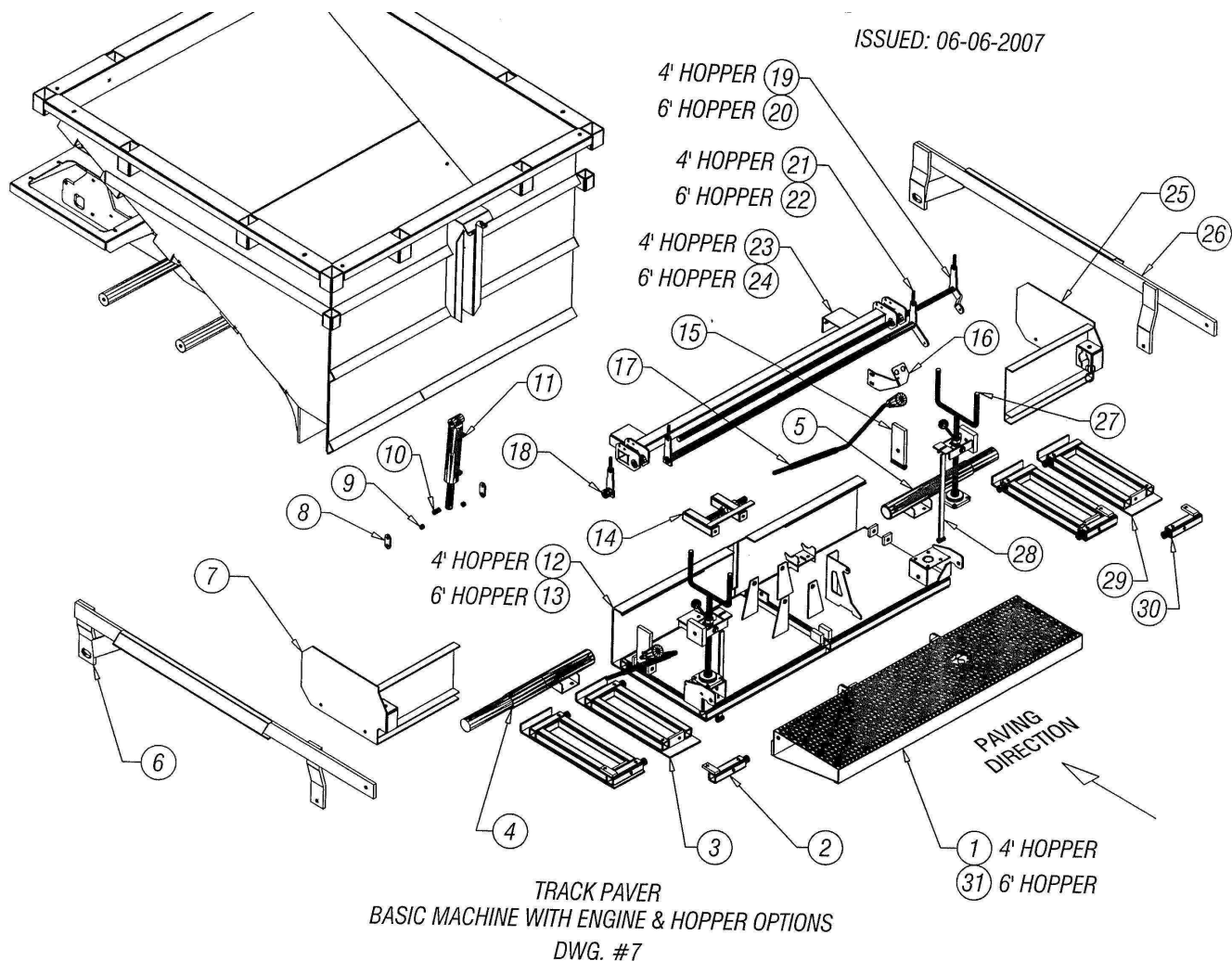
TRACK PAVER
BASIC MACHINE WITH ENGINES & HOPPER OPTIONS
DWG. #5

DRAWING #5			
ITEM #	DESCRIPTION	PART #	QTY.
1	4' Hopper-Option #0161241	0226149	1
2	6' Hopper-Option #0161249	0226153	1
3	Panel, Paver Hopper Extension	0239990	2
4	Plate, Asphalt Flow Control Scraper	0462346	1
5	Plate, Asphalt Flow Control Scraper	0462407	1
6	Plate, Asphalt Flow Control Scraper	0262345	1
7	Plate, Asphalt Flow Control Scraper	0262404	1
8	Guard, Rear Control Cable	0421467	1
9	Pin, Hopper Pivot	0240127	2
10	Pin, Width Marker	0240136	2
11	Tube, Width Marker Pin-Left	0267383	1
12	Tube, Width Marker Pin-Right	0267384	1
13	Stand, Platform	0273028	1



TRACK PAVER
BASIC MACHINE WITH ENGINE & HOPPER OPTIONS
DWG. #6

DRAWING # 6			
ITEM #	DESCRIPTION	PART #	QTY.
1	Bracket, Slide Door Cylinder	0206803	1
2	Pin, Hopper Slide Door Cylinder, Lower	0240124	2
3	Spacer, Hopper Slide Door	0449211	2
4	Spacer, Hopper Slide Door	0449222	2
5	Pin, Hopper Slide Door Cylinder, Lower	0240126	2
6	Hydraulic Cylinder - 10" Stroke	0330158	2
7	Pin, Hopper Dump Cylinder, Upper	024125	2
8	Pin, Hopper Slide Door Cylinder, Upper	0240123	2
9	Hydraulic Cylinder - 6" Stroke	0330156	2



DRAWING # 7

ITEM #	DESCRIPTION	PART #	QTY.	ITEM #	DESCRIPTION	PART #	QTY.
1	Stand, Platform - 4' Hopper	0273028	2	17	Handle, Flow Guide Crank Ext.	0223129	2
2	Tube, Screed Extension - Left	0267371	2	18	Lever, Rear Drive Control Outer	0233217	1
3	Frame, Screed Extension - Left	0219385	2	19	Shaft, Dr. Control Lever	0248253	1
4	Jack, Flow Guide - Left	0269045	1	20	Shaft, Dr. Control Lever	0248255	1
5	Jack, Flow Guide - Right	0269046	1	21	Tube, Dr. Control Lever	0267417	1
6	Arm, Screed Extension Lift-Left	0265108	1	22	Tube, Dr. Contr. Lever	0267420	1
7	Guide, Asphalt Flow-Left	0222170	1	23	Mount, Control Lever Link	0276594	1
8	Link, Screed Lift Cylinder	0434062	2	24	Mount, Control Lever Link	0276596	1
9	D.O.M.-05/8"O.D. x .406"I.D. x 3/8" Lg.		2	25	Guide, Asphalt Flow-Right	0222169	1
10	D.O.M.-05/8"O.D. x .406"I.D. x 1-1/16" Lg.		1	26	Arm, Screed Extension Lift-Right	0265107	1
11	Hydraulic Cylinder - 8" Stroke	0330157	1	27	Jack, Screed Height Assembly	0169042	2
12	Frame, Screed-4' Paver Hopper	0219387	1	28	Bar, Height Gauge	0270145	2
13	Frame, Screed-6' Paver Hopper	0219388	1	29	Frame, Screed Extension-Right	0219386	2
14	Adjuster, Paver Screed Width	0101035	1	30	Tube, Screed Extension-Right	0267370	2
15	Link, Screed Height Adjustment	0234061	2	31	Stand, Platform - 6' Hopper	0273029	1
16	Link, Rear Control Cable	0476581	1				

WARRANTY POLICY

Please remember to complete and return your Warranty Card and Dealer Delivery Report. Warranty Claims will not be considered if the Warranty Card and Dealer Delivery Report have not been returned to Salsco.

Your Salsco Commercial or Turf Equipment product is a commercial type product and is normally manufactured and sold for commercial or industrial use. **Salsco will, for the original purchaser, for one (1) year from the date of purchase (90 days if used for rental purposes) repair or replace, free of charge, any SALSCO part or parts found to be defective in material, workmanship or both.** Any transportation or shipping charges will be borne by the purchaser. If, during the warranty period stated above, the product does not function properly due to defect, simply contact Salsco and follow the Warranty Procedures included in this manual.

This warranty **does not** include:

- Incidental or consequential damages and is exclusive of any implied warranties.
- Normal maintenance parts, including, but not limited to hoses, chains, belts, filters, lubricants, etc.
- Parts or components, which are covered under the original manufacturer warranty, including, but not limited to engines, pumps, and motors.

WARRANTY PROCEDURE

In order for Salsco to consider your warranty claims in a timely manner you must follow the simple procedures listed below:

MACHINE OR PART FAILURE

- Call our service department for helpful instruction on how to correct or repair the problem. Preventive maintenance will also be suggested.
- When ordering parts for Warranty issues, you **MUST** retain possession of the old parts in question until notified with respect to returning the parts to Salsco or other disposition.
- Warranty Claims **MUST** be filed within 30-days from completion of the work performed. Contact our office for an electronic warranty claim form.
- Fill in all information requested on warranty claim form, a copy of which is included in this manual, (date of purchase, company name, address, etc.). List all parts used. Make sure part numbers are correct. You can obtain these from your manual. (include good description of problem; i.e. "leaking from spool" rather than "leaking").
- It is our goal to consider and reach a disposition on each Warranty Claim within 30-days from the date that it is received. Therefore it is important that you respond promptly to any request for further information. Claims with no response to inquiries will be closed as **"denied for lack of response"** 90-days from the date of request.
- Email, Fax or Send Warranty Claim form to our Warranty Department. – **Warranty on parts most often requires return of the parts that were replaced.** DO NOT DISCARD OLD PARTS UNTIL YOU HAVE RECEIVED A DETERMINATION AS TO WHETHER THESE PARTS MUST BE RETURNED.
- Our Warranty Department will contact and instruct you on how to return the Parts to Salsco on an RA #. Returns **MUST** be made within 30-Days from issuance of RA #. **FREIGHT CHARGES ON RETURN OF PARTS IS THE RESPONSIBILITY OF THE CUSTOMER.** Normal pre-delivery adjustments are not covered under warranty. Labor Warranties are based on reasonable time allowances as determined by Salsco, Inc. and paid at 75% of posted labor rate. **TRAVEL TIME IS NOT REIMBURSED UNDER THE WARRANTY POLICY.**
- Be sure to put the RA form inside the box that you are shipping back, also be sure to put on the outside of the box "Return of Goods" and the RA #.
- Ship returns via a traceable method such as UPS Ground Service. Be sure that the shipment is insured for the appropriate value. If uninsured parts are lost, we cannot issue a credit.

PLEASE NOTE: *Warranty forms should be filled out completely.*

PREVENTIVE MAINTENANCE IS YOUR BEST INSURANCE AGAINST EQUIPMENT FAILURE. BE SURE TO READ THIS MANUAL, ESPECIALLY THE MAINTENANCE, OPERATING AND CAUTION SECTIONS.

**SALSCO, INC., 105 School House Rd.
Cheshire, CT 06410
800-872-5726, 203-271-1682
203-271-2596 (Fax)
sales@salsco.com, www.salsco.com**

WARRANTY CLAIM FORM

SALSCO, INC.
105 School House Rd.
Cheshire, CT 06410

Phone: (203) 271-1682, (800) 872-5726
Fax: (203) 271-2596
Email: s.clark@salsco.com
Website: www.salsco.com

END OWNER**Date Submitted:**

Name:	Phone:	Work Order #:
Email:	Fax:	Office Use Only
Address:		Date Rec'd
		Cust ID:
		Salsco WC
		Salsco RA

PURCHASED FROM

Name:	Phone:	Date Approved:
Email:	Fax:	Date Rejected:
Address:		Processed By:
		Dir. Del Report on File: YES NO
		Warranty Card on File: YES NO
		Part(s) Total:

Equipment/Warranty Information (Must be complete)

Purchase Date:	Invoice #	Date Failed:	Labor Total:
			Total Approved:
Model #:	Serial #:	Repair Date:	Approved/Rejected:
			Name:
Hrs Used:	Primary Use:		Reason for Rejection:
Warranty Claim/Work Order#:			
Was a Salsco Return Authorization # issued for repairs or			
Return of Parts? YES NO			Suggested Preventative Maint:
Probable Cause of Failure:			

Work Performed/Comments on Repair:

Shop Labor Rate:						Submitted By:			
Total Labor Hours to Repair:						Printed Name:			
Parts Required for repair									
Salsco Part #: Description:						Qty.	Price Each	Total	Inv #
								\$	
								\$	
								\$	
								\$	

Fill in all information requested on warranty claim form.

INCOMPLETE FORMS CANNOT BE PROCESSED & WILL BE RETURNED

List all parts used. Make sure part numbers are correct. Any parts that you believe to be defective or any parts that break should be retained for possible inspection until after the warranty has been paid or part has been replaced.

SERVICE RECORD

If kept properly, this schedule will help track problems in the future.

[illegible]

MODEL # _____ S/N _____

DATE PURCHASED: _____