

Salsco, INC.

LEADER BY DESIGN

STALLION

OWNER'S MANUAL
PARTS MANUAL
SERVICE MANUAL

CHIPPER/SHREDDER



SALSCO, INC.
TURF EQUIPMENT DIVISION
105 SCHOOL HOUSE ROAD
CHESHIRE, CONN. 06410 USA

* NOTE: PLEASE READ "CAUTIONS" IN THIS MANUAL

4-1-91

STATEMENT OF FACT

YOU HAVE JUST PURCHASED THE HIGHEST QUALITY, MOST DURABLE CHIPPER/SHREDDER ON THE MARKET TODAY. THIS UNIT HAS THE ABILITY TO MEET EXACT STANDARDS AND PERFORM FOR YEARS WITH MINIMUM DOWN TIME. HOWEVER, IT CANNOT READ NOR WILL IT UNDERSTAND THIS MANUAL NO MATTER HOW LONG YOU LEAVE IT ON TOP OF THE MACHINE. IT IS YOUR RESPONSIBILITY TO READ AND UNDERSTAND IT. IT IS ALSO YOUR RESPONSIBILITY TO BE CERTAIN THIS INFORMATION IS PASSED ALONG TO ANYONE WHO IS EXPECTED TO OPERATE THIS EQUIPMENT. SHOULD YOU CHOOSE NOT TO READ, UNDERSTAND AND PASS ALONG THE INFORMATION PROVIDED YOU, PLEASE EXPECT EQUIPMENT FAILURE AND POSSIBLE INJURIES TO PERSONS AROUND THIS EQUIPMENT.

FOR THE SAFETY OF THE OPERATOR, IT IS IMPERATIVE THAT THIS MANUAL IS CAREFULLY READ AND UNDERSTOOD.

HAVING READ THIS MANUAL, IT IS YOUR RESPONSIBILITY TO BE SURE THAT ALL NEW OPERATORS READ AND UNDERSTAND THIS MANUAL ESPECIALLY THE CAUTIONS ON PAGE 4.

AS A MANUFACTURER OF EQUIPMENT WE HAVE A RESPONSIBILITY TO DESIGN A SAFE PIECE OF EQUIPMENT. HOWEVER, ONLY YOU CAN PREVENT ACCIDENTS!!

READ AND UNDERSTAND MANUAL BEFORE OPERATING

DESCRIPTION

STALLION CHIPPER/SHREDDER

Once in a while a product comes along that is so far above the competition even the name must say it == STALLION ==. After months of testing, we have produced a line of CHIPPER/SHREDDERS, which we believe, are so advanced that they must be seen to be believed. We've made four models to introduce the line; 5 h.p. Briggs Consumer Model, 5 h.p. Briggs, 7.9 h.p. OHV Kawasaki, and a 8 h.p. Briggs Commercial Models. Our units will handle, with ease, 3 1/2" logs and brush up to 3/4" thick in the shredder side. We have several options, such as electric start, 12' hose kit, transport wheel, over the road tires, and a light package. Most important is the way the STALLION pulls in material and the speed at which it does it.

READ AND UNDERSTAND MANUAL BEFORE OPERATING

MANUFACTURED BY:

SALSCO, INC.
105 SCHOOL HOUSE ROAD
CHESHIRE, CT 06410
(203) 271-1682
FAX: (203) 271-2596

THIS MANUAL COVERS MODELS: 10007 5 hp Briggs (Consumer)
10001 5 hp Briggs (Commercial)
10003 7.9 hp Kawasaki (Commercial)
10005 8 hp Briggs (Commercial)

This company reserves the right to discontinue, add improvements to, or change the design of any model or product at any time without obligation to improve existing machines, either by changing the design or adding new parts.

It has been and will continue to be the policy of SALSCO to update existing machines at its own discretion. Whenever possible, new designs will be made in such a way, that they can be "Retro Fit" if so desired.

Record in the space provided below the model and serial number of this unit. Please retain these numbers for future reference.

No parts orders will be accepted without model numbers or part numbers. All part numbers are listed in this manual.

SERIAL NUMBER

MODEL NUMBER & NAME

NOTE: Be sure to complete your warranty card. This will insure immediate processing of any warranty claims.

READ AND UNDERSTAND THIS MANUAL BEFORE STARTING MACHINE

CAUTIONS

SALSCO CHIPPER/SHREDDER

- 1) ALWAYS use protective eyewear when machine is in operation
- 2) ALWAYS use gloves and wear ear protection when machine is in operation
- 3) NEVER put hands into or near Chipper/Shredder intake or discharge openings
- 4) NEVER run with guards removed.
- 5) ALWAYS allow machine to cool off and have spark plug removed before attempting any maintenance on the Stallion.
- 6) DO NOT operate with loose clothing or long unrestrained hair.
- 7) DO NOT operate on ice or any other slippery surface. Be sure area around machine is clear and clean. You don't want to trip into the machine.
- 8) NEVER leave machine running unattended, especially around youngsters or persons not instructed in the safe operation of this machine.

NEVER PUT HANDS, OR ANY PART OF YOUR BODY IN INTAKE OR
DISCHARGE OPENINGS WHILE MACHINE IS RUNNING

OPERATING INSTRUCTIONS

SALSCO CHIPPER/SHREDDER

- 1) Be sure all guards are in place.
- 2) Check both chambers to be sure they are free and clear of debris.
- 3) Check engine oil and fuel levels, as per engine manufacturers specifications.
- 4) Set engine throttle just above idle, and set choke.
- 5) Start engine and let idle for a few minutes to warm up.

***CAUTION:** Never look into either chute. Never reach, for any reason, into any part of this machine.

- 6) Set engine to full R.P.M. Machine is ready to use.
- 7) In chipper side, machine will take a maximum of 3 1/2" branches.
- 8) In shredder side, machine will take a maximum of 1/2" and smaller.

HINTS

- 1) When putting brush in shredder side, put it in and let it go. If it gets stuck, leave it. The next branch will pull it in. DO NOT REACH INTO HOPPER.
- 2) When using the chipper side and you have a short piece of wood bouncing around in the hopper, leave it. The next branch will push it in. DO NOT REACH IN HOPPER FOR ANY REASON.
- 3) When at low idle, you may hear a loud clanking noise. This is most likely the flail blades. Noise should go away with a higher R.P.M.
- 4) When feeding leaves into the shredder side, feed them slowly. A large volume of wet leaves at once, can clog the machine.

READ AND UNDERSTAND THIS MANUAL BEFORE STARTING MACHINE

SERVICE SCHEDULE

SALSCO CHIPPER/SHREDDER

- 1) Follow service schedule set forth by engine manufacturer.
- 2) Grease main bearings once a day or as needed. DO NOT OVER GREASE. Wipe extra grease off bearings.
- 3) Be sure to clean entire machine, especially around engine box.
- 4) Check all nuts and bolts daily to be sure they are tight.
- 5) When blades need to be sharpened, you must first remove spark plug, shut fuel off and then remove chipper chute. Apply heat with Oxy-Acetylene torch at about 180 . This will loosen the Loctite and allow the bolt to be removed. When you reassemble, be sure to use Loctite on all bolts.
- 6) To replace flail blades, remove spark plug wire and shut fuel off. Remove chipper chute. (This may be a good time to sharpen blades.) Remove clutch guard. Loosen clutch set screws and set screws on bearing. Unbolt Chipper/Blower housing and slide housing off impeller shaft. Now you can slide impeller shaft off machine and flail assembly off impeller shaft.
- 7) Be sure when replacing flail blades to put biting edge on leading side into rotation.
- 8) At this time, inspect all other parts for wear.
- 9) Be sure when ever machine is disassembled and clutch must be removed, you take care to line it up during reassembly. You'll want to be sure that clutch half on engine is in center of clutch hub. This adjustment is made by eye. A simple way to check is to bring engine to full R.P.M. after unit is fully assembled then shut engine down. Impeller should continue to rotate long after engine is off. This would mean clutch shoes have released and most likely are in center of hub.

NEVER PERFORM ANY SERVICE, MAINTENANCE OR REPAIR WHILE MACHINE IS RUNNING

CHIPPER/SHREDDER

WARRANTY

Your Salsco Commercial or Turf Equipment product is a commercial type product and is normally manufactured and sold for commercial or industrial use. Salsco will warranty new equipment, for the original purchaser, as follows for the purchaser categories as listed below:

Consumer Model:

Consumer.	6 Months
Commercial.	None
Rental.	None

Commercial Models:

Consumer.	1 Year
Commercial.	6 Months
Rental.	90 Days

Warranty: Repair or replace (at Salsco's option) free of charge, any part or parts found to be defective in material or workmanship or both. Any transportation charges to be borne by the purchaser.

If, during the Warranty Period, the product does not function properly due to defect, simply contact your Salsco Dealer and provide the unit or part for inspection. Or contact Salsco directly at: SALSCO, INC., Service Department, 105 Schoolhouse Road, Cheshire, CT 06410, 203/271-1682.

This warranty does not include incidental or consequential damages and is exclusive of any implied warranties.

This warranty does not include normal maintenance parts, including, but not limited to spark plugs, filters, lubricants, springs, blades, rubber products, etc.

This warranty does not include parts or components which are covered under the original manufacturers warranty, including, but not limited to engine and differential.

4/91

SHREDDER/GRINDERS

ANSI/OPEI B71.6-1990

American National Standard of Powered Shredders/Grinders Safety Specifications

12 Operator Safety Instructions

12.1 General

The manufacturer shall supply with the equipment pertinent instructions for safe operation. Examples of appropriate content and language are shown in 12.2 through 12.7.

12.2 Training

12.2.1 Become familiar with the owner's manual before attempting to operate this equipment.

12.2.2 Children shall not be allowed to operate this equipment.

12.2.3 This equipment shall not be operated in the vicinity of bystanders.

12.2.4 Carbon Monoxide can be extremely dangerous in enclosed areas; operators shall not run the machine in an enclosed area since the exhaust from the engine contains carbon monoxide, which is colorless, odorless, and tasteless.

12.2.5 Operators shall not allow hands or any other part of the body or clothing inside the feeding chamber, discharge chute, or near any moving part.

12.2.6 Before inspecting or servicing any part of the machine, the operator shall shut off the power source, disconnect the spark plug wire from the spark plug, and make sure that all moving parts have come to a complete stop.

12.3 Preparation

12.3.1 Operators shall obtain and wear safety glasses at all times while operating the machine.

12.3.2 Operators shall avoid wearing loose fitting clothing.

12.3.3 Operators shall operate the machine only on a level surface.

12.4.7 All guards and deflectors shall be kept in place and in good working condition.

12.4.8 Operators shall stand clear of the discharge area when operating this machine.

12.4.9 Operators shall keep their faces and bodies back from the feeding opening.

12.4.10 Operators shall not overreach. They shall keep proper balance and footing at all times.

12.4.11 Operators shall not tamper with the engine-governor settings on the machine; the governor controls the maximum safe operating speed and protects the engine and all moving parts from damage caused by overspeed. Authorized service shall be sought if a problem exists.

12.4.12 This machine shall not be transported while the engine is running.

12.4.13 If the machine becomes clogged, operators shall shut off the engine (or motor) and disconnect the spark plug wire (electric unit unplug) before clearing debris.

12.5 Maintenance and Storage

12.5.1 When this equipment is stopped for service, inspection, or storage, or to change an accessory, operators shall make sure the spark plug wire is disconnected from the spark plug. Operators shall allow the machine to cool before making any inspections, adjustments, etc. The machine shall be maintained with care and kept clean.

12.5.2 Store the machine out of the reach of children and where gasoline vapors will not reach an open flame or spark. For extended storage periods, run the unit dry of gas. Always allow the machine to cool before storing.

12.3.4 Operators shall not operate the machine on a paved or gravel surface.

12.3.5 Before starting the machine, operators shall check that all screws, nuts, bolts, and other fasteners are properly secured. Damaged or unreadable warning and operating decals shall be replaced.

12.3.6 Operators shall use extra care in handling gasoline and other fuels. These fuels are flammable, and their vapors are explosive.

- Only an approved container shall be used;
- Gas cap shall never be removed or fuel added with the engine running. Engine shall be allowed to cool before refueling. Operators shall not smoke;
- The machine shall not be refueled indoors;
- The machine or fuel container shall not be stored inside where there is an open flame, such as a water heater.

12.4 Operation

12.4.1 Before starting the machine, operators shall make certain that the cutting chamber is empty.

12.4.2 When feeding shreddable material into the equipment, operators shall be extremely careful that pieces of metal, rocks, bottles, can, or other foreign objects are not included.

12.4.3 If the cutting mechanism strikes any foreign objects or if the machine should start making any unusual noise or vibration, operators shall shut off the engine immediately and allow the machine to stop. Operators shall disconnect the spark plug wire from the spark plug and take the following steps:

- A) Inspect for damage;
- B) Replace or repair any damaged parts;
- C) Check for and tighten any loose parts.

12.4.4 The engine shall be kept clean of debris and other accumulations.

12.4.5 Processed material shall not be allowed to build up in the discharge area; this can prevent proper discharge and result in kickback of material through the feed opening.

12.4.6 Do not allow hands or any other part of the body or clothing inside the feeding chamber or discharge chute, or near any moving part. (This repetition of 12.2.5 is deliberate.)

CAUTION

**DO NOT OPERATE
THIS MACHINE WITHOUT
COVERS IN PLACE**

! DANGER !

**KEEP HANDS AND
FEET AWAY**

CAUTION

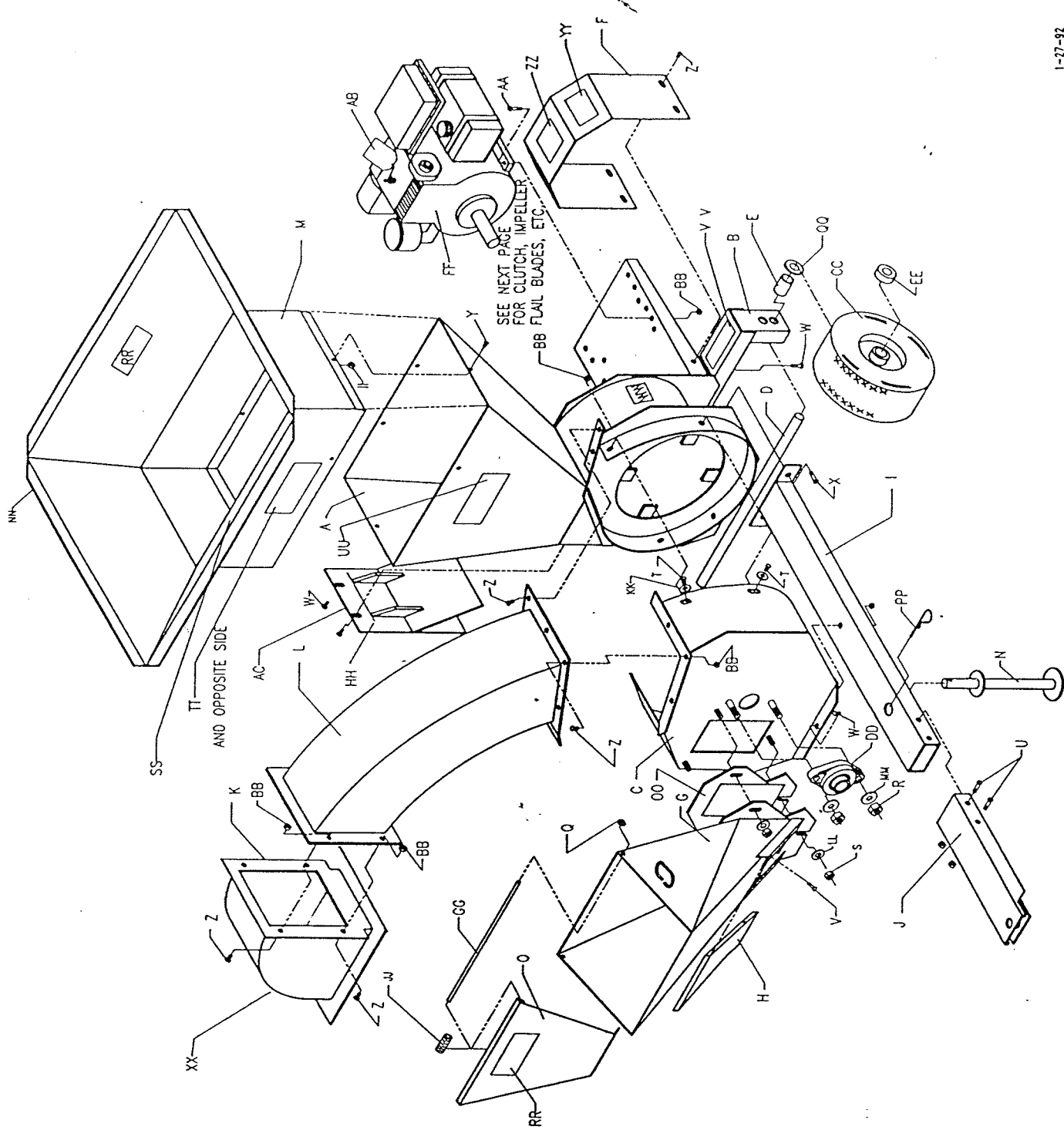
**ROTARY MOVING PARTS
KEEP ALL BODY PARTS CLEAR
WEAR PROPER EYE PROTECTION**

SAFETY RULES

1. DO NOT OPERATE WITH COVERS OFF.
2. KEEP HANDS & FEET AWAY!
3. DO NOT REFILL FUEL WHILE ENGINE IS HOT OR IS RUNNING!
4. READ MANUAL BEFORE OPERATING.
5. DO NOT OPERATE AROUND ANIMALS OR PEOPLE.
6. CAUTION - MACHINE CAN TURN DEBRIS INTO FLYING OBJECTS!



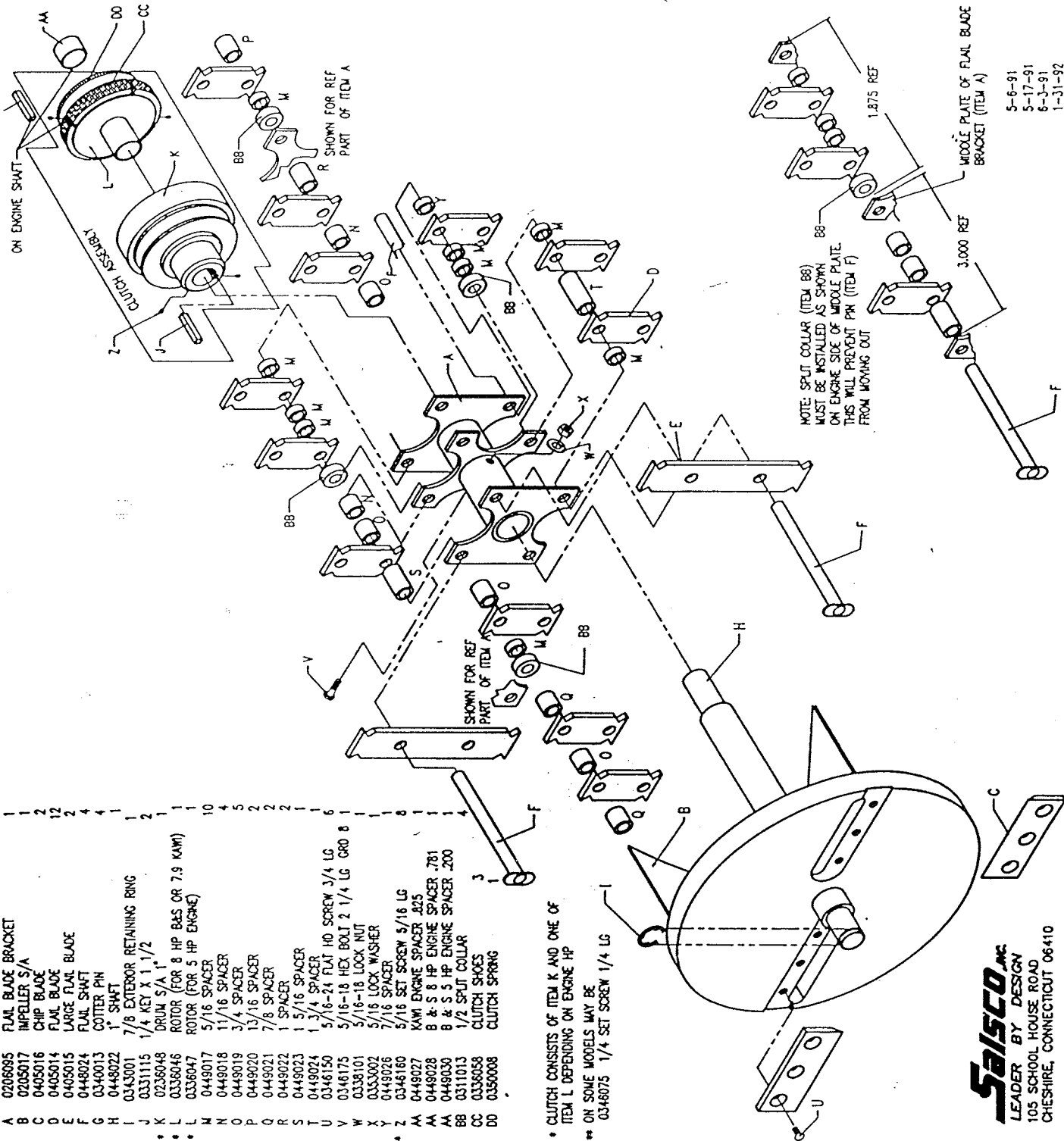
ITEM	PART NO	DESCRIPTION	QTY
A	0228043	SHREDDER HOUSING	1
B	0206089	AXLE BRACKET	1
C	0228041	CHIPPER HOUSING	1
D	0402008	AXLE	1
E	0449016	SPACER	2
F	0421020	GUARD WRAP	1
G	0228040	INLET CHUTE HOUSING	1
H	0441353	CHUTE BASE PLATE	1
I	0206092	BOTTOM BRACKET	1
J	0225003	HITCH	1
K	0228039	OUTLET CHUTE HOUSING	1
L	0228044	MAIN CHUTE	1
M	0226003	SHREDDER HOPPER	1
N	0206093	FOOT BRACKET	1
O	0226004	HOPPER DOOR	1
P	0241376	MOUNTING PLATE	1
Q	0338251	1/4 PUSHNUT	2
R	0338104	1/2 LOCK NUT	4
S	0338102	3/8 HEX BOLT X 3/4"	7
T	0346201	5/16 HEX BOLT X 1"	5
U	0346115	5/16 CAR BOLT X 1"	2
V	0346129	3/8 HEX BOLT X 1 1/2"	3
W	0346200	3/8 HEX BOLT X 1 1/2"	4
X	0346003	1/4 HEX BOLT X 3/4"	4
Y	0346102	5/16-18 HEX BOLT X 3/4"	10
Z	0346109	5/16 HEX NUT	18
AA	0338101	WHEEL BEARING	2
BB	0354013	3/4 SET COLLAR	2
CC	0303006	ENGINE & HP BAS	1
DD	0337009	DOOR ROD	1
EE	0445006	VACUUM COVER PLATE	1
FF	0241365	1/4 HEX NUT	4
GG	0338100	SPRING	1
HH	0353002	5/16 LOCKWASHER	6
II	0353102	3/8 FLATWASHER	3
JJ	0353115	HARD FLAT WASHER	2
KK	0336051	HOPPER TRIM	1
LL	0549025	CHUTE SPACER	3
MM	0340006	HITCH PIN	1
NN	0353106	3/4 FLAT WASHER	2
OO	0314029	DECAL FINGERS	2
PP	0314047	DECAL SHRD 1/2 MAT	1
QQ	0314012	DECAL SALSICO BLK	2
RR	0314048	DECAL STALLION	1
SS	0314006	ID TAG	1
TT	0314019	DECAL FLAG	1
UU	0314049	DECAL COVERS	1
VV	0314005	DECAL SAFETY	1
WW	0314016	DECAL CAUTION ROTARY	1
XX	0314044	TAG SHIP W/O OIL	1
YY	0314045	DECAL VAC DOOR CAUTION	1



ITEM	PART NO.	DESCRIPTION	QTY
A	0206095	FLAIL BLADE BRACKET	1
B	0205017	IMPELLER S/A	1
C	0405016	CHIP BLADE	2
D	0405014	FLAIL BLADE	12
E	0405015	LARGE FLAIL BLADE	2
F	0448024	FLAIL SHAFT	4
G	0340013	COTTER PIN	4
H	0448022	1" SHAFT	1
I	0343001	7/8 EXTERIOR RETAINING RING	1
J	0333115	1/4 KEY X 1 1/2"	2
K	0236048	DRUM S/A 1"	1
L	0336046	ROTOR (FOR 8 HP B&S OR 7.9 KAWI)	1
M	0336047	ROTOR (FOR 5 HP ENGINE)	1
N	0449017	5/16 SPACER	10
O	0449018	11/16 SPACER	4
P	0449019	3/4 SPACER	5
Q	0449020	13/16 SPACER	2
R	0449021	7/8 SPACER	2
S	0449022	1 SPACER	1
T	0449023	1 5/16 SPACER	1
U	0449024	1 3/4 SPACER	1
V	0346150	5/16-24 FLAT HD SCREW 3/4 LG	6
W	0346175	5/16-18 HEX BOLT 2 1/4 LG GRD 8	1
X	0338101	5/16-18 LOCK NUT	1
Y	0333002	5/16 LOCK WASHER	1
Z	0449026	7/16 SPACER	1
AA	0346160	5/16 SET SCREW 5/16 LG	8
BB	0449027	KAWI ENGINE SPACER .825	1
CC	0449028	B & S 8 HP ENGINE SPACER .781	1
DD	0449030	B & S 5 HP ENGINE SPACER .200	1
	0311013	1/2 SPLIT COLLAR	1
	0336058	CLUTCH SHOES	4
	0336008	CLUTCH SPRING	1

* CLUTCH CONSISTS OF ITEM K AND ONE OF ITEM L DEPENDING ON ENGINE HP

** ON SOME MODELS MAY BE 0348075 1/4 SET SCREW 1/4 LG



Salsco, Inc.
LEADER BY DESIGN
105 SCHOOL HOUSE ROAD
CHESHIRE, CONNECTICUT 06810

SALSCO'S WARRANTY PROCEDURE

In order for Salsco to process your warranty claims in a timely manner you must follow the simple procedures listed below:

1) MACHINE OR PART FAILURE

- a) Call our service department before you try to fix the problem, for instruction on how to correct or repair the problem. Preventive maintenance will also be suggested.
- b) Fill in all information requested on warranty claim form (date of purchase, company name, address, etc.)
- c) List all parts used. Make sure part numbers are correct. You can obtain these from your manual. Any parts that you believe to be defective or any parts that break should be retained for possible inspection until after the warranty has been paid or part has been replaced.

For most engine problems it will be easier for you to contact your local engine dealer. Should you have any problem, please call Salsco.

If you have any questions, please do not hesitate to call us. Our toll free number is 1-800-BSALSCO.

READ AND UNDERSTAND THIS MANUAL BEFORE OPERATING

WARRANTY CLAIM

SALSCO, INC.- 105 SCHOOL HOUSE ROAD, CHESHIRE, CT 06410

PHONE: (203) 271-1682

FAX: (203) 271-2596

END-OWNER:

PHONE# ()

ADDRESS:

PURCHASED FROM:

PHONE# ()

ADDRESS:

DATE FAILED:

DATE PURCHASED:

INVOICE #

SERIAL #

MODEL#

HOURS USED:

PROBABLE CAUSE OF FAILURE OR PROBLEM:(word defective not sufficient)

WORK PERFORMED/COMMENTS ON REPAIR:

PART #	DESCRIPTION	QTY	PRICE EACH	LABOR
--------	-------------	-----	------------	-------

PREVENTIVE MAINTENANCE SUGGESTED AND BY WHOM:

OFFICE USE ONLY

DT APPRVD:_____DT RJCTD:_____ENTRD A/R:_____ENTRD DB:_____

DEALER D/R: _____ WARRANTY CARD: _____

PART(S) TOTAL: _____ LABOR TOTAL: _____ TOTAL: _____

APPROVED/REJECTED BY: _____

NAME	TITLE
------	-------

REASON FOR REJECTION:

SERVICE RECORD

THIS SCHEDULE IF KEPT PROPERLY WILL HELP TRACK PROBLEMS IN THE FUTURE

[illegible]