

**SPEED SENSING
CALIBRATION & PARTS/WIRING DIAGRAM**



MANUFACTURER OF OUTDOOR POWER EQUIPMENT
Products for Turf & Lawn care, Rental, Construction, Tree care, Wood Processing, Nursery & Farm Industries
Other Salsco Equipment

**3-1/2" - 18", Gas, Diesel, and P.T.O, Wood/Brush Chippers
Chipper Shredder Vacuums - Tailgate & Truckloader Vacuums
Shaving Mills - Gas and Electric Greens Rollers**

***Quality of Workmanship, Innovative
Design, Built to Last!***

105 School House Road
Cheshire, CT 06410 U.S.A.
800-872-5726, 203-271-1682, 203-271-2596 (Fax)
sales@salsco.com, www.salsco.com

REV. 4.21.2010

SPEED SENSING CALIBRATION

CAL #	MODEL #	
2	627XT	
	6210XT	
	824	
	8416/8425	
	8635K, 8635C, 8640Y	
30	826	
	8625	
	810	} "Small" Hydraulic Lift Cylinders – 0330052-N (Before S/N 1519) If unit is equipped with Hydraulic Lift Option
	810M	
	810XT	
	810PTO	
22	810	} "Large" Hydraulic Lift Cylinders – 0330053-N (After S/N 1520) If unit is equipped with Hydraulic Lift Option
	810M	
	810XT	
	810PTO	
40	813	
	813XT	
	818	
	818XT	

SETTING SPEED SENSING

1. Set the Calibration – Find the Mag Pick-Up. It is either on the bell housing or on the impeller shaft.
 - a. If the Mag Pick-Up is on the bell housing, call the factory with engine model number, and ask for the number of teeth on the flywheel. That number must be set as the calibration number.
 - b. If the Mag Pick-Up is on the impeller shaft return to the chart above and plug the calibration number into the meter.

2. Turn on the power to the dial (key switch if engine driven, toggle for PTO units) and the meter will light up. You should see a zero with a dot in the lower right side of the meter. The dot means the feed sensing is on.

- a. Press and hold the left button until the meter gets dark then release the button. You will see the meter read “auto feed off” and the dot will disappear.
 - b. Press and hold the right button until the meter gets dark then release the button “auto feed on” and the dot will appear again.
3. Now hold both buttons in together until the screen is dark and let them go. You will see CAL (and a #). At this time, press the left button to lower the number or the right to raise the number until the number of choice appears. Now press both buttons. Keep pressing both buttons until you get back to the zero with a dot.
 - a. You have just told the machine each time you count the number in the Calibration window that equals one R.P.M.
4. Setting the Hi & Low
 - a. Start the machine and raise to full R.P.M. (be sure to engage the clutch so that the impeller is turning)
 - b. Make a note of the number you see in the meter at full R.P.M. This is “No Load R.P.M”
 - c. Shut the machine down.
 - d. Press and Hold both buttons until the meter gets dark and change the Hi & Lo to the following numbers.
 - e. Change the Hi to be 100 less than the “No Load R.P.M.”
 - f. Change the Lo to be 100 less than the Hi.
 - g. All the other settings are set to zero.

EXCEPTIONS:

- 1. Units with Auto Reverse Speed Sensing, set the back to .250.**
- 2. 540 RPM @ the PTO - Hi = 520 Lo = 500**

Auto-Feed Gold™

For ALL applications Including Kohler

OPERATING INSTRUCTIONS

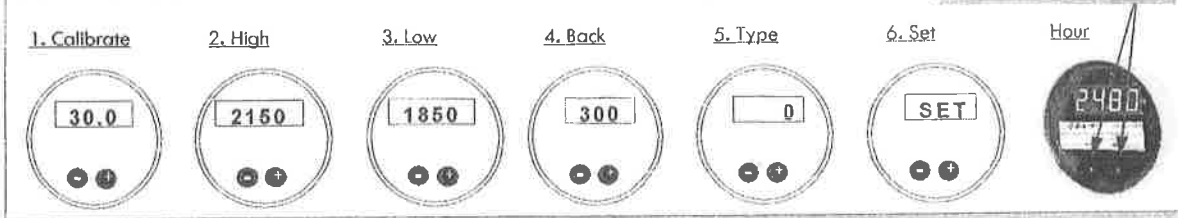
PLEASE READ BEFORE OPERATING

Every effort had been made to make this manual and instructions as easy to read as possible. Please contact your dealer if you have any questions. This device is preset at the factory with John Deere settings. Below is a sample of the menu options covered in this manual.

MENU—SIX STEPS & Hour

All Functions May Be Programmed While Engine is RUNNING!

To check the hours, simply press and release either button.



- To protect against accidental entry, the user must go through all SIX steps or program will not set.
- If, after starting to set the unit, no entries are made after 7 seconds, the unit will go back to the last program setting.
- So, if you make a mistake, not to worry, it will just go back to the last set program. If you need help, just call!



Step One—Calibration

- Press and hold **BOTH** push buttons until you see "HOUR," the amount of hours, then a blank display (about 4 seconds).
- Now **release** the buttons. You will see "CAL" displayed then a CAL number.

Enter the Calibration Number (1-200)



- After step one, press the **RIGHT** button to **increase** the number, press the **LEFT** button to decrease the number shown in the read-out.
- For the **Kohler** engine, "CAL" is 9.1.
- Check engine guide on back when programming



Step Two—Setting the HI Limit

- Press and release **both** buttons again.
- You will now see **HI** displayed.
- Enter the **HI** or **Feed On RPM** number by:
- Pressing the **RIGHT** button to **increase** the number in the read-out, OR
- Press the **LEFT** button to **decrease** the number.



Step Three—Setting the Lo Limit

- Press and release **both** buttons again.
- You will now see **Lo** displayed.
- Enter the **Lo** or **Feed Off RPM** number by:
- Pressing the **RIGHT** button to **increase** the number in the read-out, OR
- Press the **LEFT** button to **decrease** the number.



Revised March 17, 2004



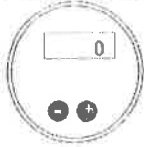
Step Four—Setting the Reverse Time

- Press and release **both** buttons again.
- You will now see **back** displayed.

Entering the Reverse Time



- Enter the desired reverse time or **0** (zero) if reverse is not used.* If your machine does **not** have reverse, it **must** be set to **0** (zero).
- Reverse time guidelines:
 - 250 = 1/4 of a second
 - 500 = 1/2 of a second



Step Five—Setting TYPE (Reversing or Non-Reversing)

- Press and release **both** buttons again.
- You will now see "TYPE" displayed.
- Enter TYPE 0 or 1
- **Use TYPE 0 for standard Auto-feed.**
- Use TYPE 1 for new style reverse.



Step Six—Exit Program Mode

- Press both buttons again, now display will read SET! Unit is now programmed

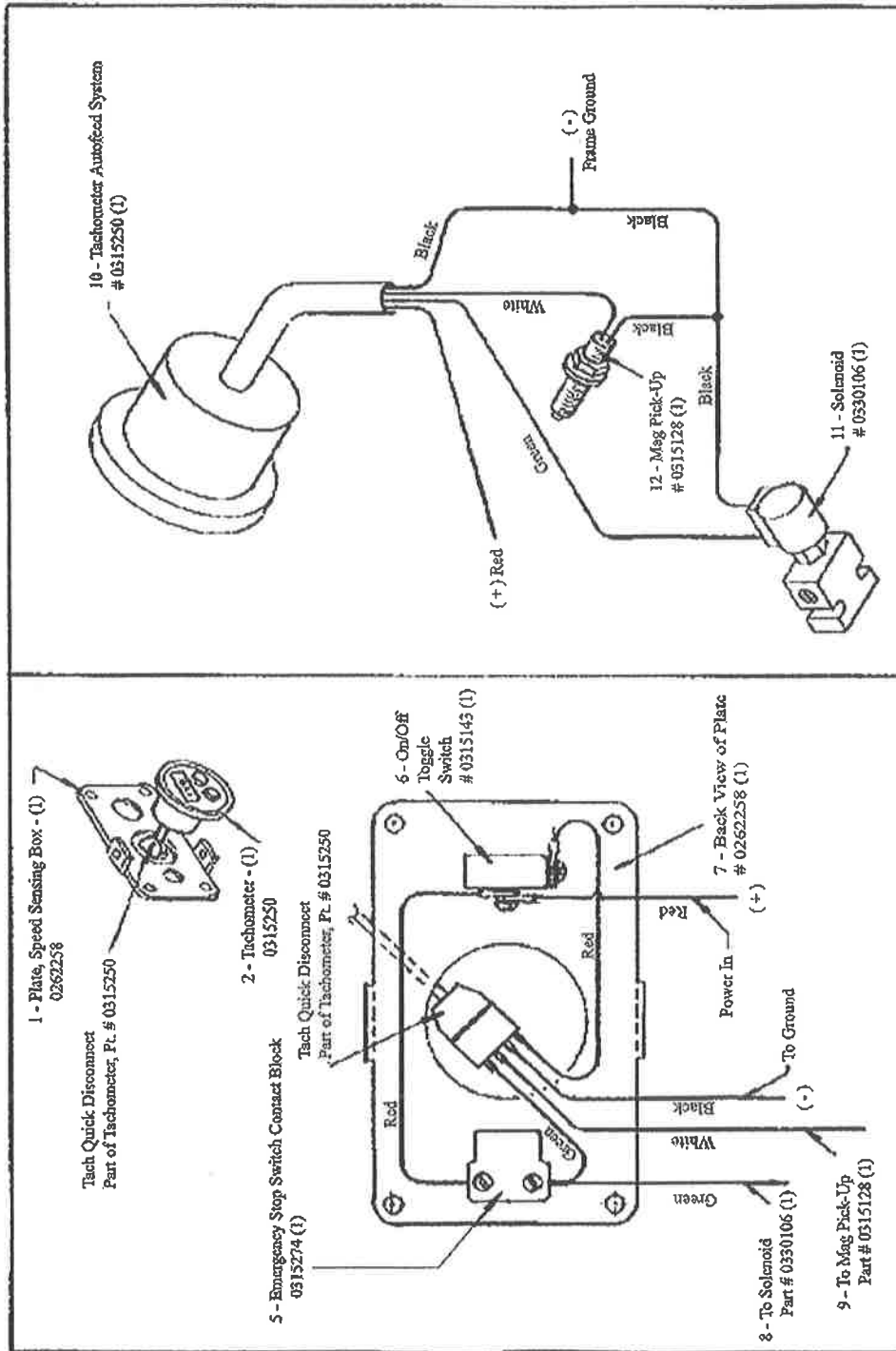


Turning your Auto-Feed On or Off

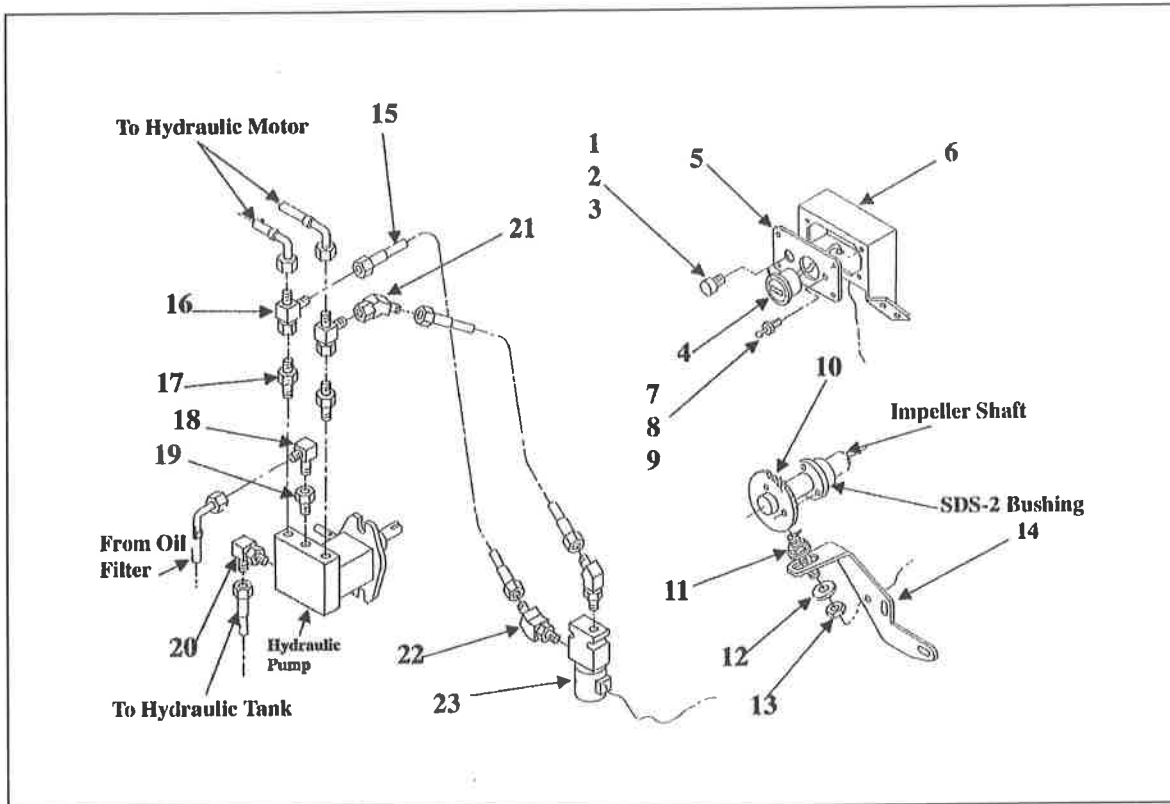
- If you need to turn your auto feed off, simply press and hold the left button for 4 seconds, then release.
- To turn it back on, press and hold the right button for 4 seconds.



© 2003 Electronic Solutions Of Harrison, LLC

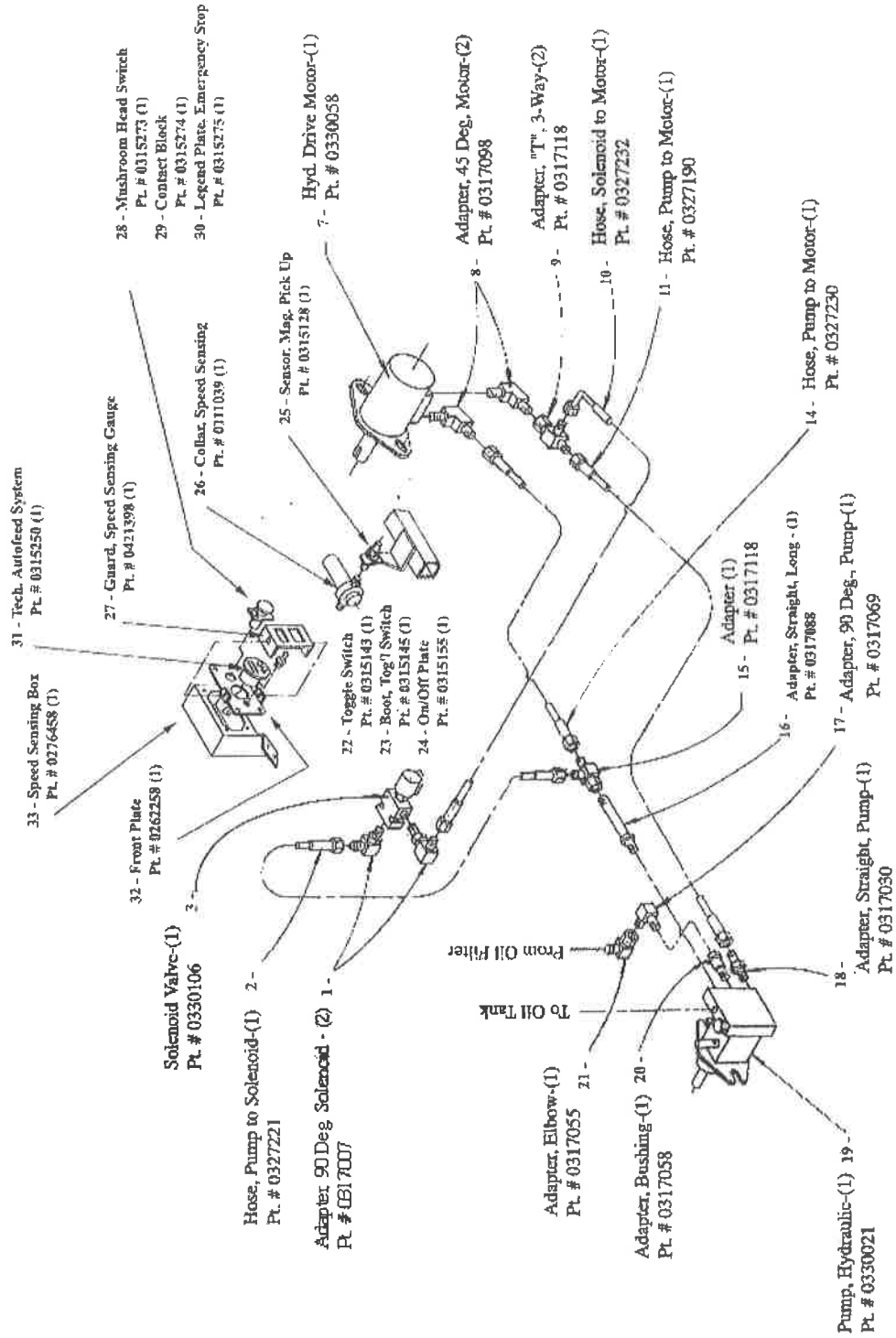


NOTE: FTO CHIPPEES UTILIZE TRACTOR POWER. ENGINE POWERED UNITS ARE SELF CONTAINED.



ITEM #	DESCRIPTION	PART #	QTY
1	Legend Plate, Emergency Stop	0315275	1
2	Contact Block	0315274	1
3	Mushroom Head Switch	0315273	1
4	Auto Feed System	0315250	1
5	Front Plate, Speed Sensing Box	0262258	1
6	Speed Sensing Box	0276458	1
7	Toggle Switch	0315143	1
8	Boot, Toggle Switch	0315145	1
9	On/Off Plate	0315155	1
10	Sprocket, Speed Sensing	0451153	1
11	Sensor, Magnetic Pick-Up	0315128	1
12	Flat Washer	0353110	2
13	Hex Jam Nut	0338061	2
14	Bracket, Magnetic Pick-Up Mtg.	0406669	1
15	Hose, Pump to S. Valve (18")	0327078	2
16	"T" Swivel Run	0317118	2
17	Adapter, Straight	0317030	2
18	Elbow 90°	0317069	1
19	Adapter Bushing	0317058	1
20	Elbow 90°, "O" Ring	0317064	1
21	Elbow 45° Swivel	0317033	1
22	Elbow 45° "O" Ring	0317034	2
23	Solenoid Valve	0330106	1

HYDRAULIC SYSTEM WITH OPTIONAL FEED SENSING (OLD STYLE)



REV 01/04