

**Salsco, INC.**  
LEADER BY DESIGN

MADE IN THE U.S.A

## OPERATORS AND PARTS MANUAL TRACK PAVER, MODEL TP44-TD



---

### MANUFACTURER OF OUTDOOR POWER EQUIPMENT

Products for Turf & Lawncare, Rental, Construction, Tree care, Wood Processing, Nursery & Farm Industries

*Other Salsco Equipment*

**Cobra Curber - Scorpion Router - Side Dump Bucket  
3-1/2" - 18", Gas, Diesel, and P.T.O, Wood/Brush Chippers  
Chipper Shredder Vacuum - Tailgate & Truckloader Vacuums  
Gas and Electric Greens Rollers**

***Quality of Workmanship, Innovative  
Design, Built to Last!***

105 School House Road  
Cheshire, CT 06410 U.S.A.  
800-872-5726, 203-271-1682, 203-271-2596 (Fax)  
sales@salsco.com, www.salsco.com

## **TABLE OF CONTENTS**

### **MODEL TP44-TD 0005029 DESCRIPTION**

COVER & TABLE OF CONTENTS.....	Pages 1 – 2
STATEMENT OF FACT .....	Page 3
MACHINE REGISTRATION .....	Page 4
TRACK PAVER OPERATION.....	Page 5-6
PARTS DIAGRAM.....	Pages 7-25
TORQUE CHART.....	Page 26
WARRANTY POLICY & PROCEDURE .....	Page 27
COPY OF WARRANTY CLAIM FORM.....	Page 28
COPY OF DEALER DELIVERY REPORT & WARRANTY CARD.....	Page 29
SERVICE SCHEDULE LOG .....	Page 30

## **STATEMENT OF FACT**

You have just purchased the highest quality, most dependable, Track Paver on the market today. This unit has the ability to meet exact standards and perform for years with minimum downtime. HOWEVER, it cannot read nor will it understand this manual no matter how long you leave it on top of the machine.

**It is your responsibility** to read and understand this manual; it is also your responsibility to be certain this information is passed along to anyone who is expected to operate this equipment. Should you choose not to read, understand and pass along the information provided you, please expect equipment failure and possible injuries to persons around this equipment.

For the safety of the operator, it is **imperative** that this manual is carefully read and understood.

Once you have read this manual, it is your responsibility to be sure that all new operators read and understand this manual, especially all cautions stated.

As a manufacturer of equipment, we have a responsibility to design a safe piece of equipment. NOTE: The important safeguards and instructions in this manual are not meant to cover all possible conditions and situations that may occur. It must be understood that common sense, caution, and care are factors, which cannot be built into any product. These factors must be supplied by the person(s) caring for and operating this equipment.

## **MACHINE REGISTRATION**

MANUFACTURED BY:

SALSCO, INC.

105 School House Rd., Cheshire, CT 06410

800-872-5726, 203-271-1682, 203-271-2596 (Fax)

[sales@salsco.com](mailto:sales@salsco.com) [www.salsco.com](http://www.salsco.com)

THIS MANUAL COVERS MODEL (s): 0005029– TRACK PAVER TP44-TD

This company reserves the right to discontinue, add improvements to, or change the design of any model or product at any time without obligation to improve existing machines, either by changing the design or adding new parts.

It has been and will continue to be the policy of SALSCO to update existing machines at its own discretion. Whenever possible, new designs will be made in such a way that they can be "Retro Fit" if so desired.

Record in the space provided below the model and serial number of this unit. Please retain these numbers for future reference.

No parts orders will be accepted **WITHOUT MODEL NUMBERS OR PART NUMBERS**. All part numbers are listed in this manual.

---

Serial Number

---

Model Number

NOTE: Be sure to complete your warranty card. This will insure immediate processing of any warranty claims.

## **READ AND UNDERSTAND THIS MANUAL BEFORE STARTING THE MACHINE**

3/2011

## **TRACK PAVER TP44-TD OPERATION**

**IT IS HIGHLY RECOMMENDED TO USE ONLY SUPER GUARD 20W-50 HYD. OIL**

**Read this manual before starting. Never let anyone not properly trained operate this machine. Be sure no one that is not familiar with the operation is in the vicinity when ready to start the unit.**

### **Prior to Starting**

- Drive controls **MUST** be in neutral and locked.
- **REMOVE** all packaging and shipping materials.
- **ALL** fluid levels are filled to manufacturer's specifications. (Check engine manual for proper levels.)
- **CAUTION: TO STOP ENGINE PUSH THE THROTTLE IN!**

### **First Get to Know the Machine**

- After checking all oil and fuel levels...
- Start the engine with the forward/reverse in neutral with the locks in place.
- Go to the hydraulic control valve over the screed.
- First move the screed lever, raise then lower the screed. When you push or pull the lever it will lock in. This will be the float position, which will allow the screed to float.
- Try each of the other levers so you can become familiar with the machine.

### **Screed and End Gates**

- Raise the screed and block it up to prevent it from falling when you have your arm under the machine.
- Extend the end gates and turn the engine off.
- Now reach under the end gate and turn the wing nut on top of the end gate. You will feel the butterfly under the end gate moving.
- By adjusting the butterflies on the end gates, you will achieve a more even texture so when rolled, it will blend much better.
- At this time, adjust the goal post on the ends of the screed. You will see how this adjustment will move the screed which will allow it to climb or dive while paving.
- Lastly in the center of the screed, you will see a crown invert adjustment. This is used to keep the screed flat, or to put an invert to carry water runoff, or a crown to allow water to run off the sides of the mat.

### **Test with Sand**

- The first test will be with sand.
- You will need a small dump truck of wet sand, and two pieces of 2" x 4" x 20" wood.
- Lay the 2x4s under the screed long ways.
- Raise the screed and turn the goal post till you find what feels like neutral.
- From this point, you can turn the goal post together and watch the screed pitch either climb or dive.
- Adjust the screed so it is flat on the 2x4s, then change the adjustment so the edge closest to the hopper is off the 2x4s by maybe ¼".

### **Run the Test**

- Leave the screed on the 2x4s.
- Be sure the screed raise/lower handle is in the float position.
- Fill the hopper with sand.
- Move the track controls slowly causing the machine to move away from the screed.

## **TRACK PAVER TP44-TD OPERATION (Continued)**

- Let the machine move slow, keep a constant speed, keep filling the machine without stopping the machine.
- After 10 or so feet while the machine is still moving, check the mat.
- If you want it thicker, adjust the gauge post so it climbs, go a little at a time and recheck.

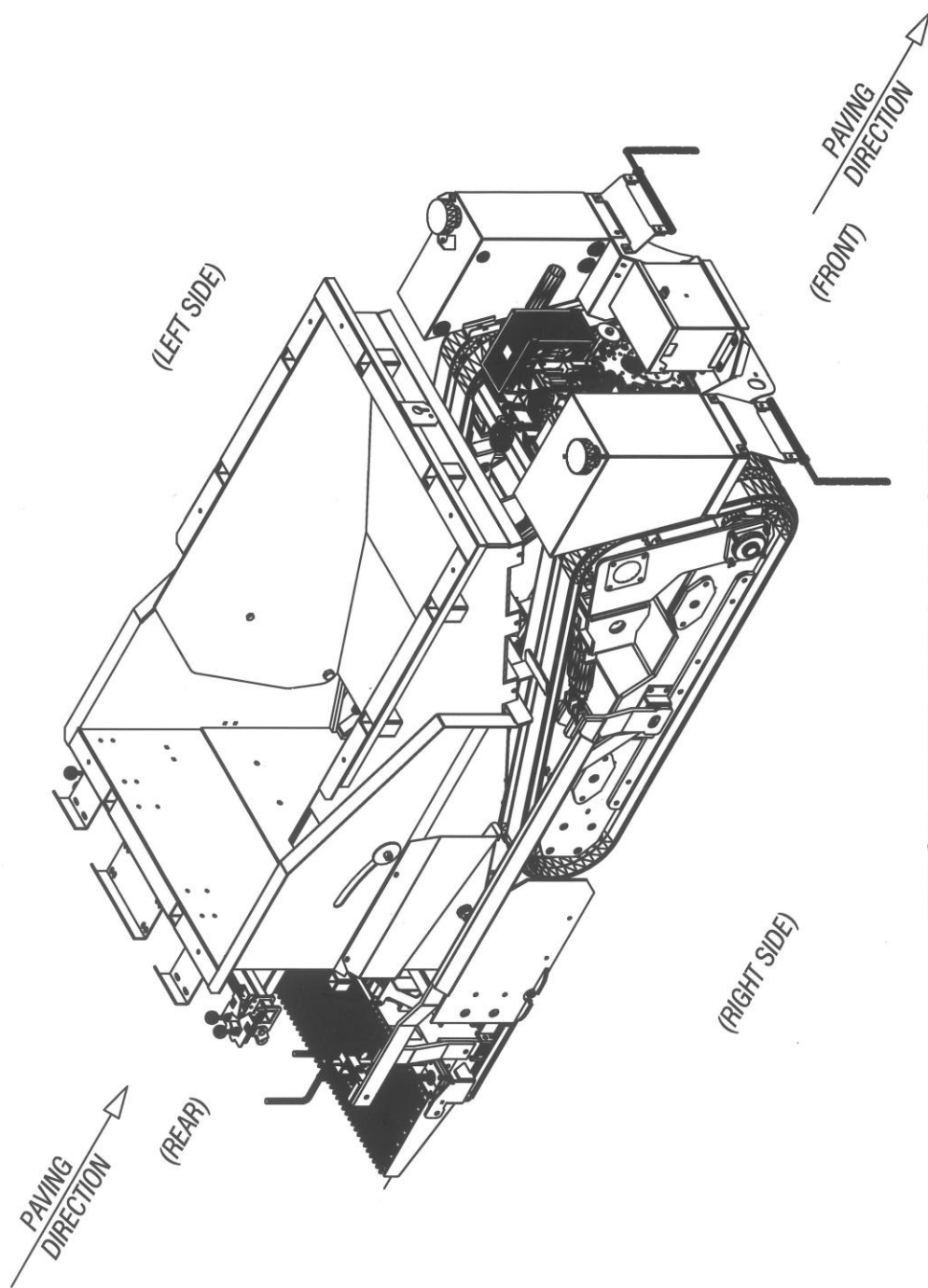
### **Things to Remember**

- The float position of the control lever.
- How to adjust the screed.
- Keep the machine moving.
- Slower is better.
- **The trick is to keep a slow ground speed and keep the hopper  $\frac{3}{4}$  full!**

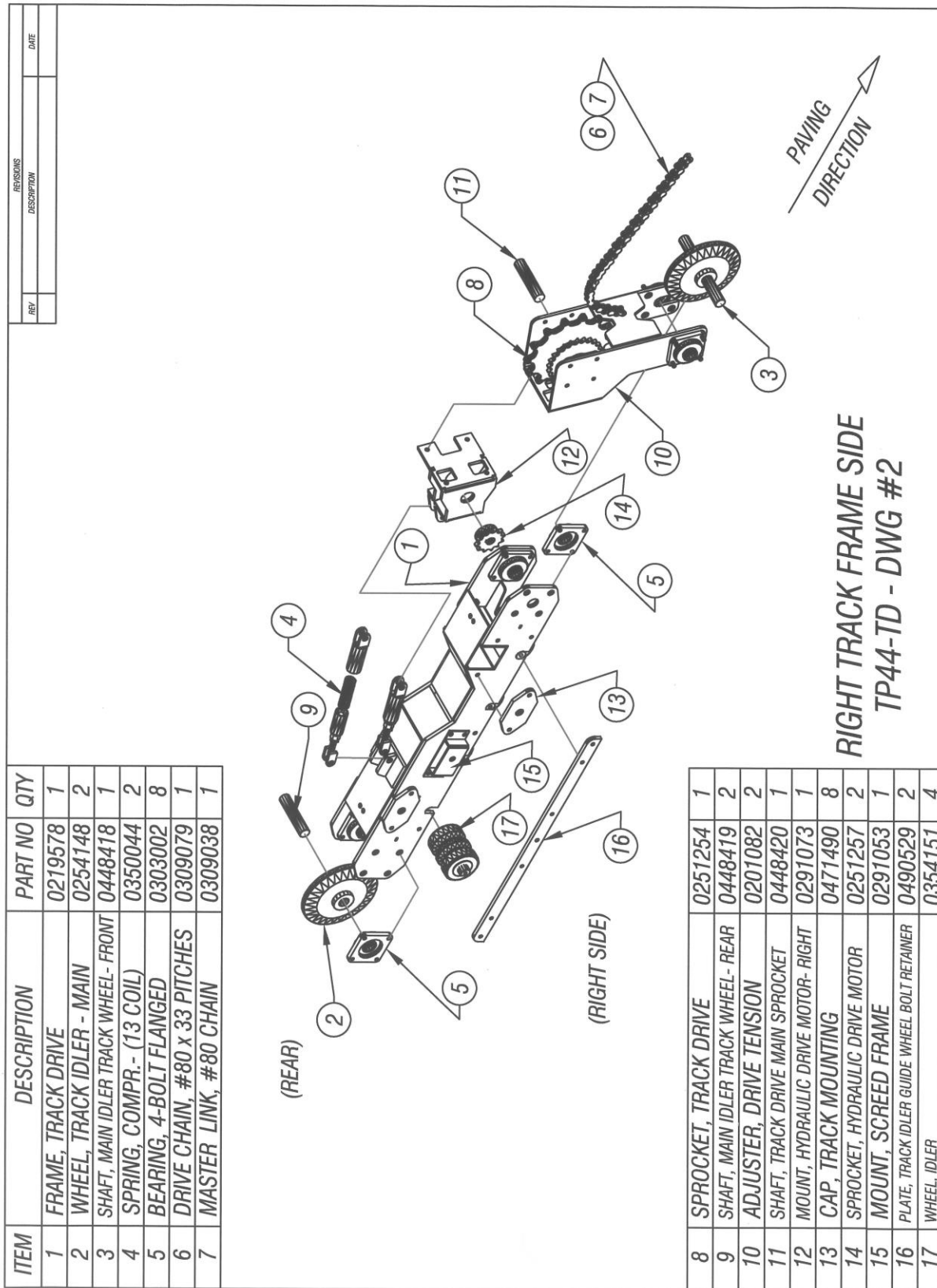
### **Now You are Ready for Asphalt**

- Be sure to oil the machine.
- Use the 2x4s.
- Put material in the machine and drive it a couple feet till the material comes out from the screed and stop the machine.
- Wait a few minutes for the machine to warm up from the material.
- Put the machine in drive and pave.

REVISIONS		DATE
REV	DESCRIPTION	



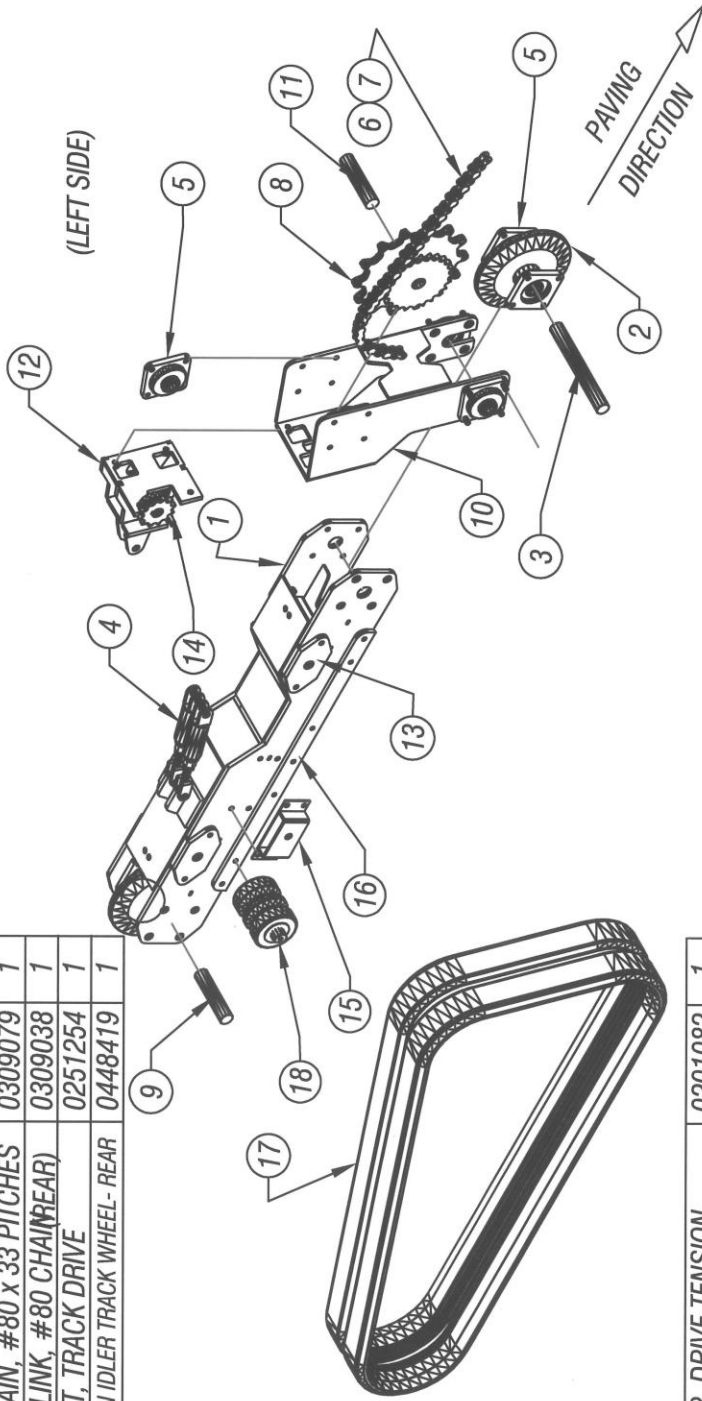
TRACK PAVER WITH 44" HOPPER  
TP44-TD - DWG #1





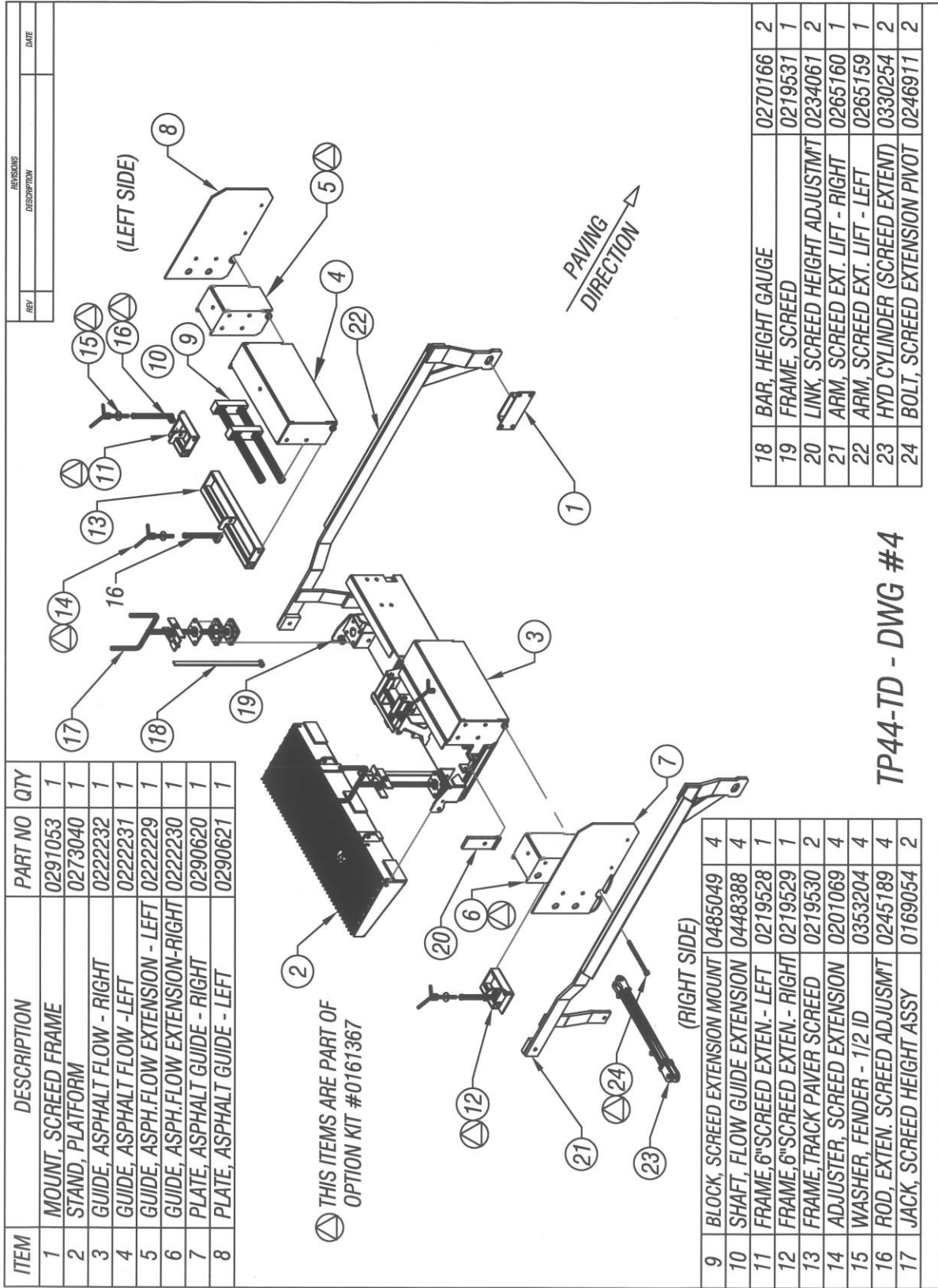
REV	REVISIONS DESCRIPTION	DATE

ITEM	DESCRIPTION	PART NO	QTY
1	FRAME, TRACK DRIVE	0219548	2
2	WHEEL, TRACK IDLER - MAIN	0254148	2
3	SHAFT, MAIN IDLER TRACK WHEEL- FRONT	0448418	1
4	SPRING, COMPR. - (13 COIL)	0350044	2
5	BEARING, 4-BOLT FLANGED	0303002	8
6	DRIVE CHAIN, #80 x 33 PITCHES	0309079	1
7	MASTER LINK, #80 CHAIN(REAR)	0309038	1
8	SPROCKET, TRACK DRIVE	0251254	1
9	SHAFT, MAIN IDLER TRACK WHEEL- REAR	0448419	1

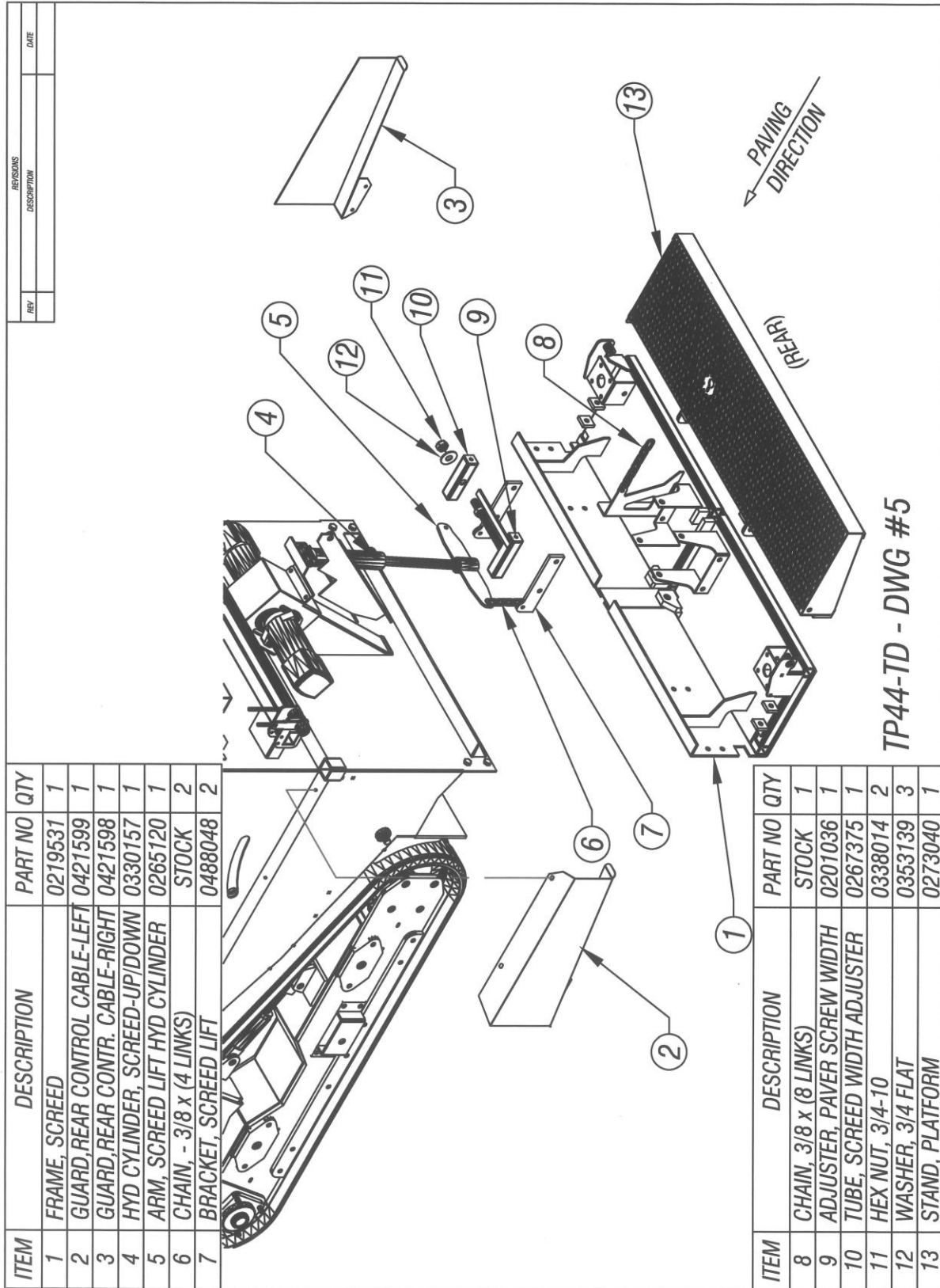


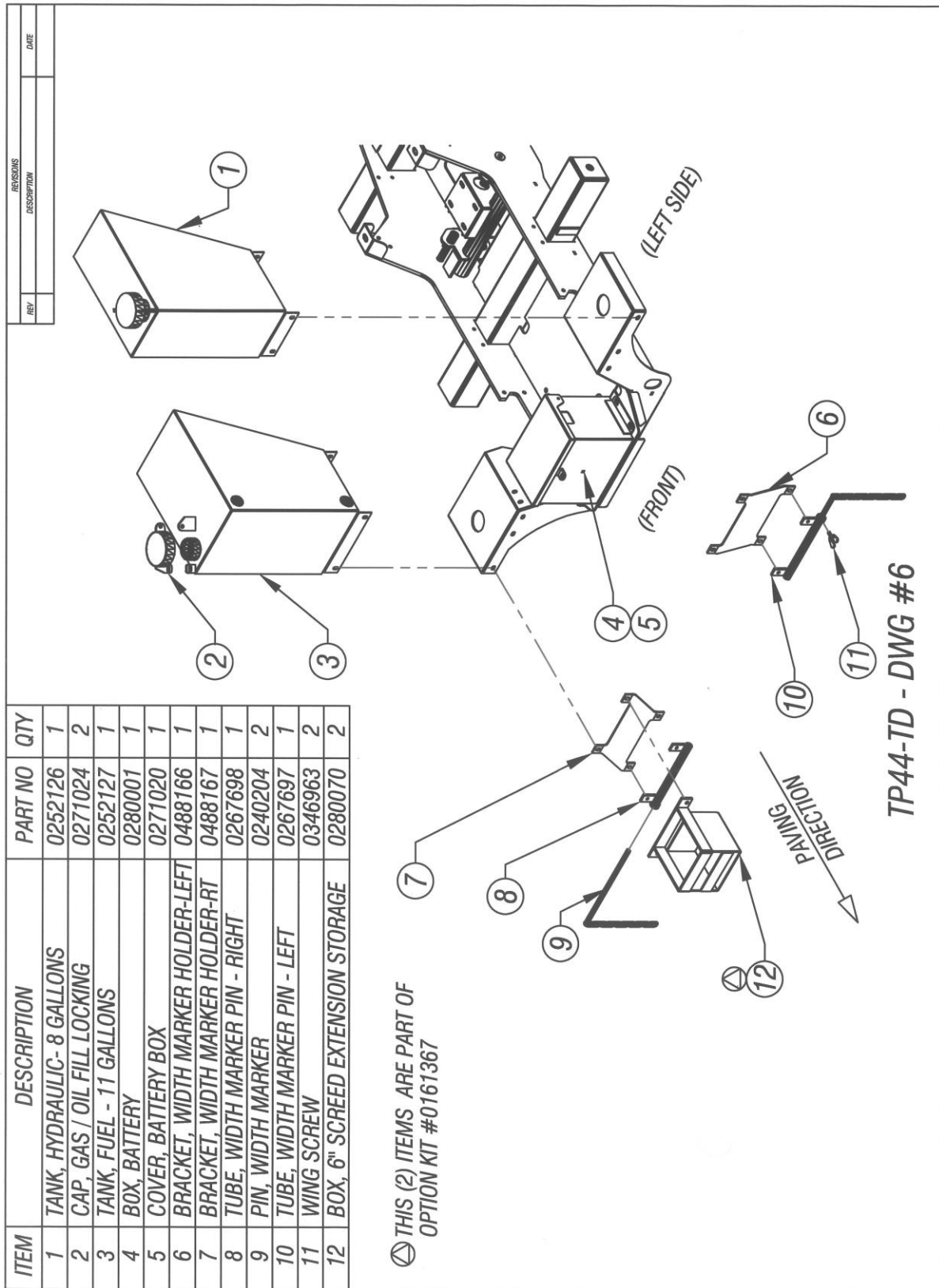
LEFT TRACK FRAME SIDE  
TP44-TD - DWG #3

10	ADJUSTER, DRIVE TENSION	0201082	1
11	SHAFT, TRACK DRIVE MAIN SPROCKET	0448420	1
12	MOUNT, HYDRAULIC DRIVE MOTOR- LEFT	0291072	1
13	CAP, TRACK MOUNTING	0471490	4
14	SPROCKET, HYDRAULIC DRIVE MOTOR	0251257	2
15	MOUNT, SCREED FRAME	0291053	1
16	PLATE, TRACK IDLER GUIDE WHEEL BOLT RETAINER	0490529	2
17	DRIVE TREAD, RUBBER TRACK	0354102	1
18	WHEEL, IDLER	0354151	4



**TP44-TD - DWG #4**

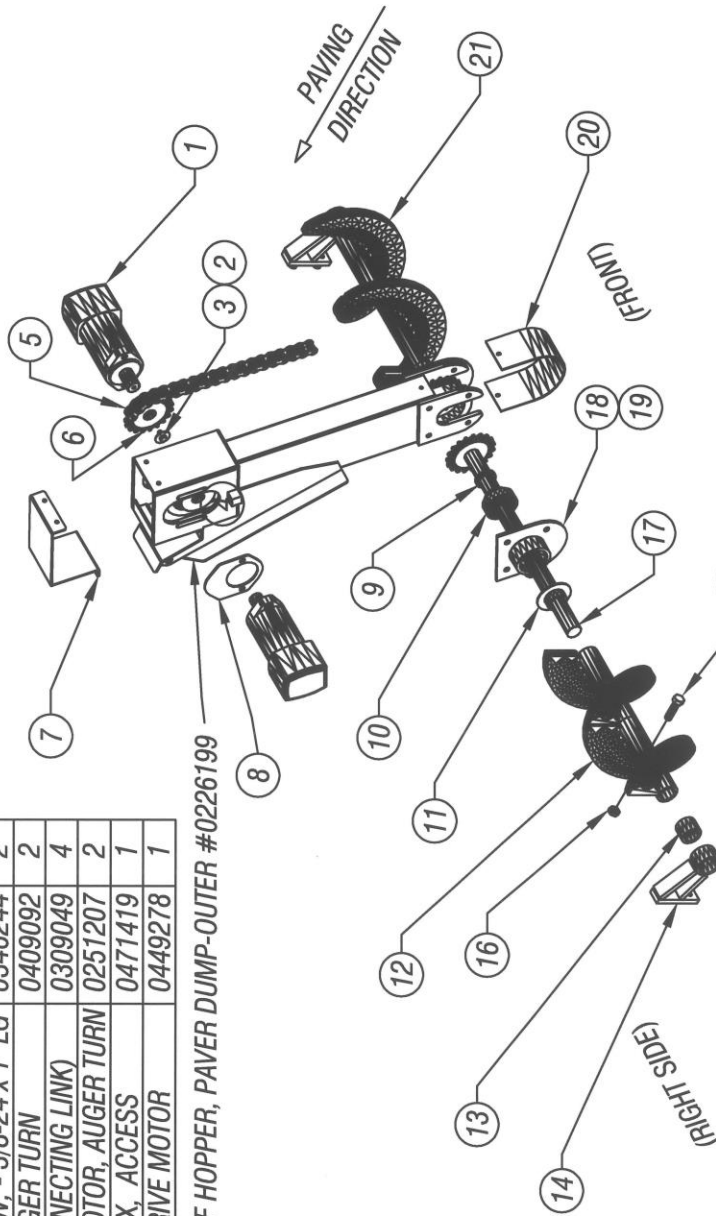




REV	DESCRIPTION	DATE

ITEM	DESCRIPTION	PART NO	QTY
1	HYD MOTOR, AUGER TURN	0330209	2
2	WASHER, FENDER - 3/8 ID	0353203	2
3	SOC HD CAP SCREW, - 3/8-24 x 1" LG	0346244	2
4	ROLLER CHAIN, AUGER TURN	0409092	2
5	MASTER LINK (CONNECTING LINK)	0309049	4
6	SPROCKET, HYD MOTOR, AUGER TURN	0251207	2
7	COVER, AUGER BOX, ACCESS	0471419	1
8	SPACER, AUGER DRIVE MOTOR	0449278	1

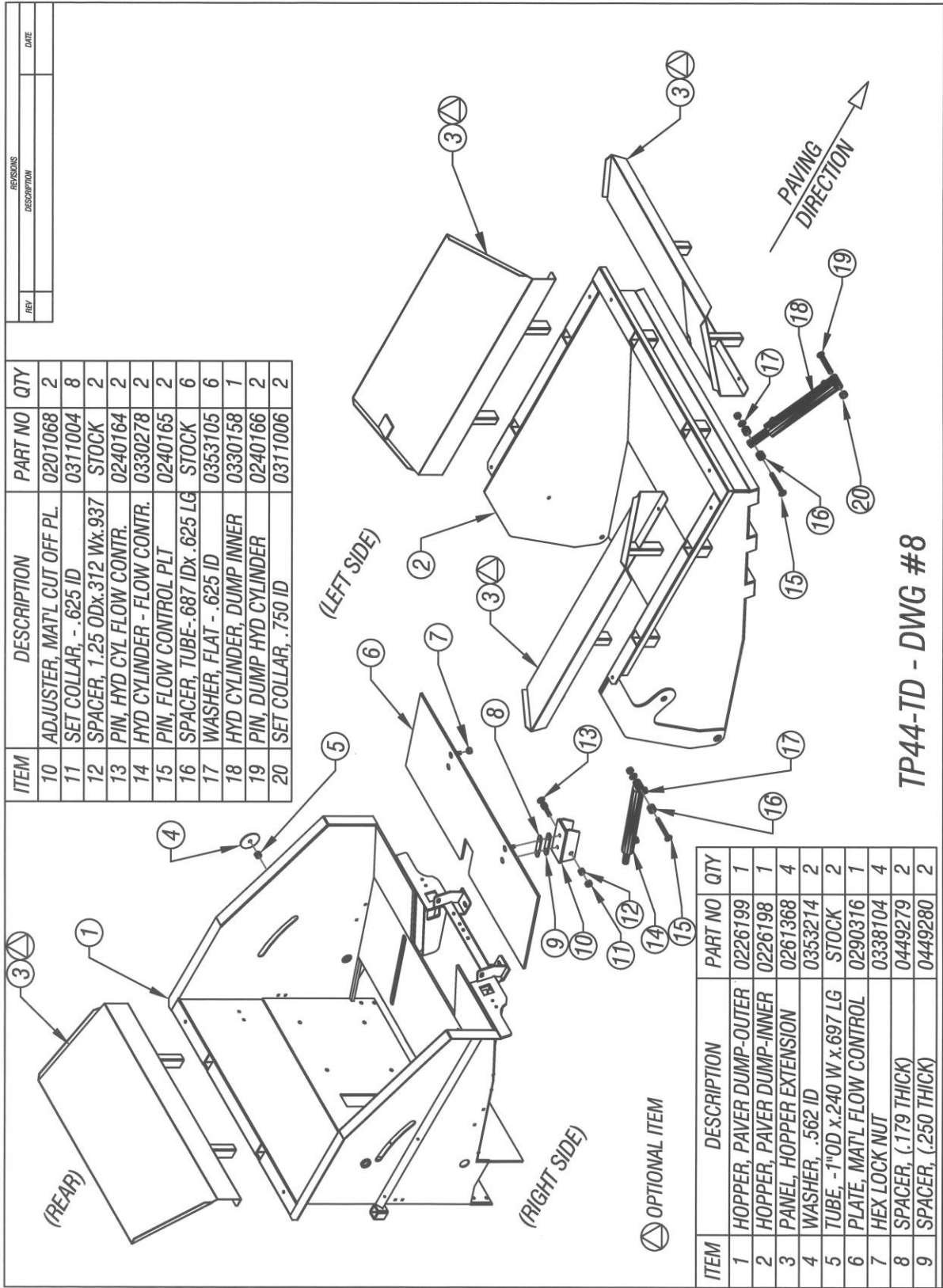
PART OF HOPPER, PAVER DUMP-OUTER #0226199



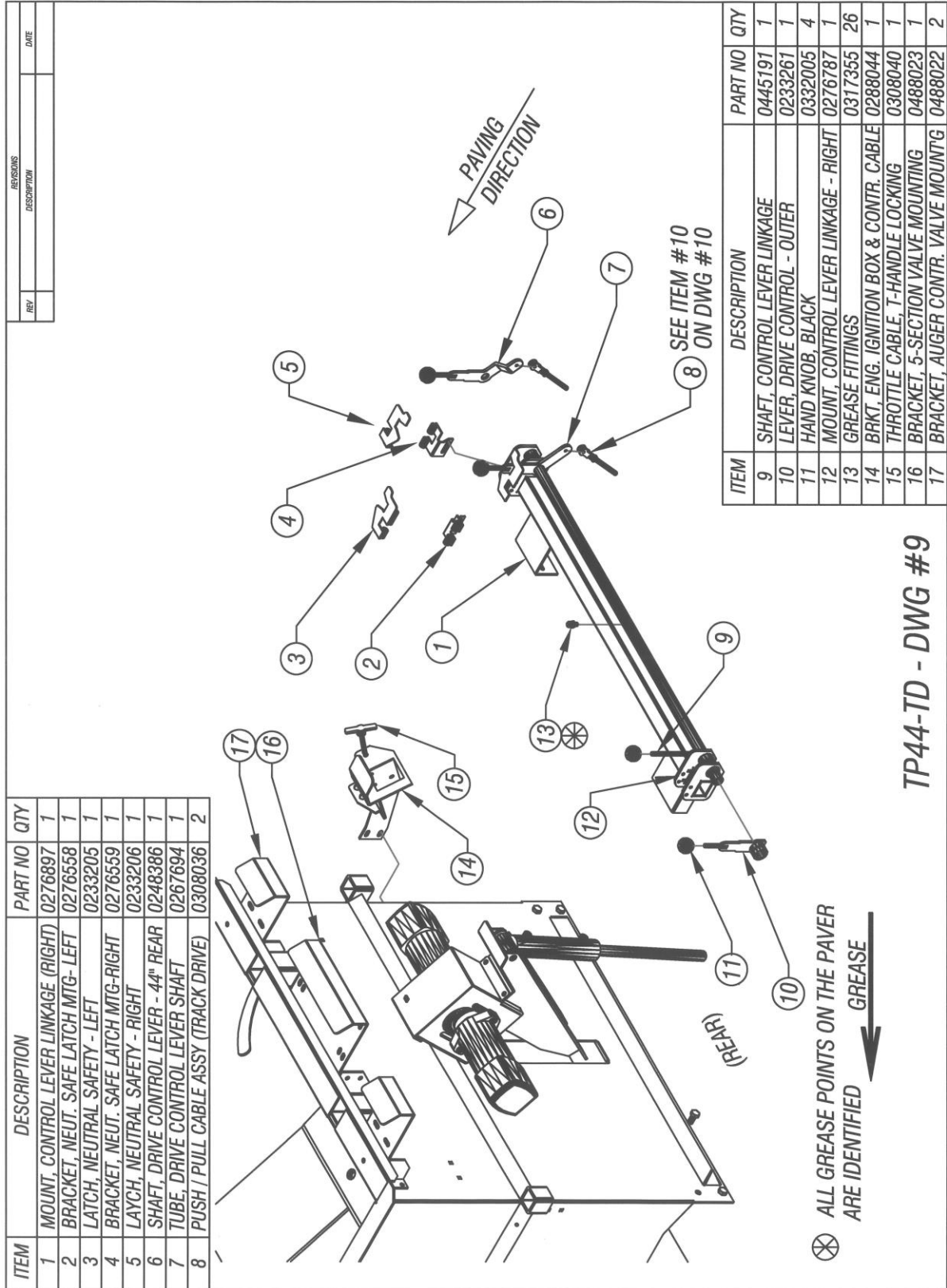
ITEM	DESCRIPTION	PART NO	QTY
9	SPACER, 2 OD x .243 W x .375	STOCK	2
10	BEARING	0303086	2
11	SPACER, AUGER SHAFT DRIVE	0249277	2
12	AUGER, RIGHT	0336137	1
13	BUSHING, BRONZE - OILIGHT	0307031	2
14	MOUNT, AUGER SHAFT	0276759	2
15	BOLT, HEX HEAD	0346522	2
16	NUT, CASTLE	0338204	2

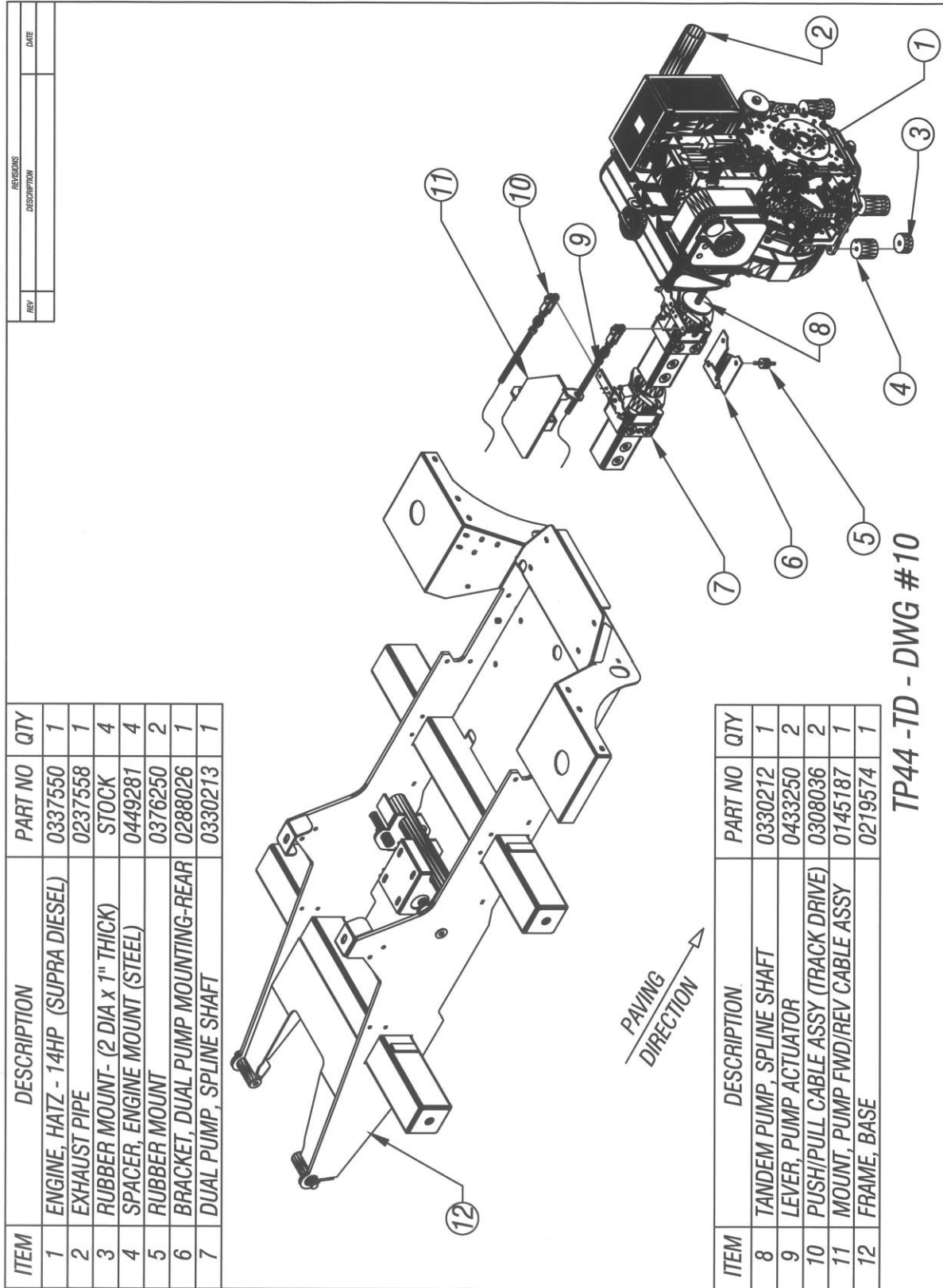
ITEM	DESCRIPTION	PART NO	QTY
17	SHAFT, AUGER DRIVE	0248384	2
18	HOUSING, AUGER BEARING (RIGHT)	0228284	1
19	HOUSING, AUGER BEARING (LEFT)	0228286	1
20	GUARD, AUGER CHAIN DRIVE	0421600	2
21	AUGER LEFT	0336138	1

TP44-TD - DWG #7



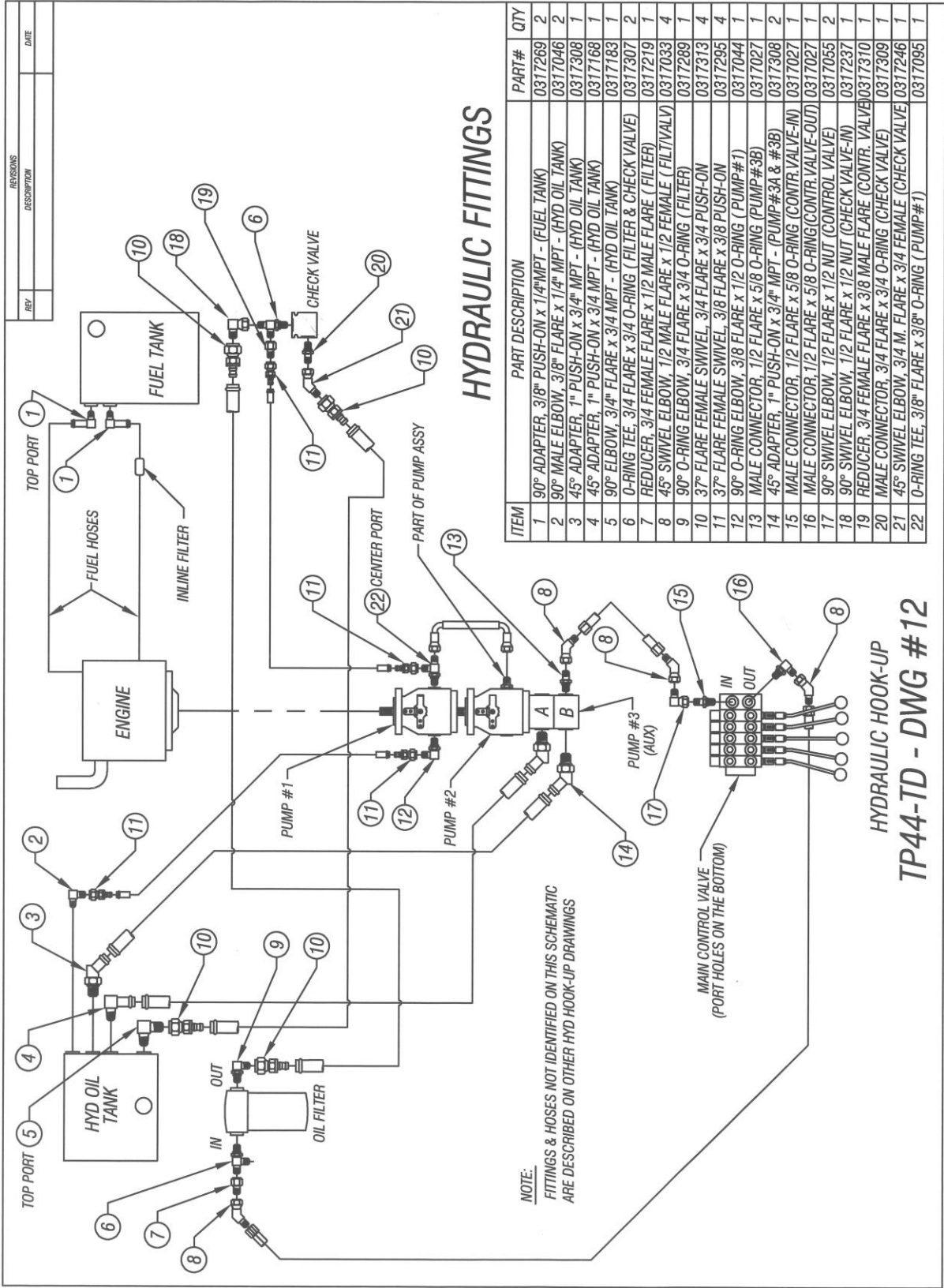
TP44-TD - DWG #8

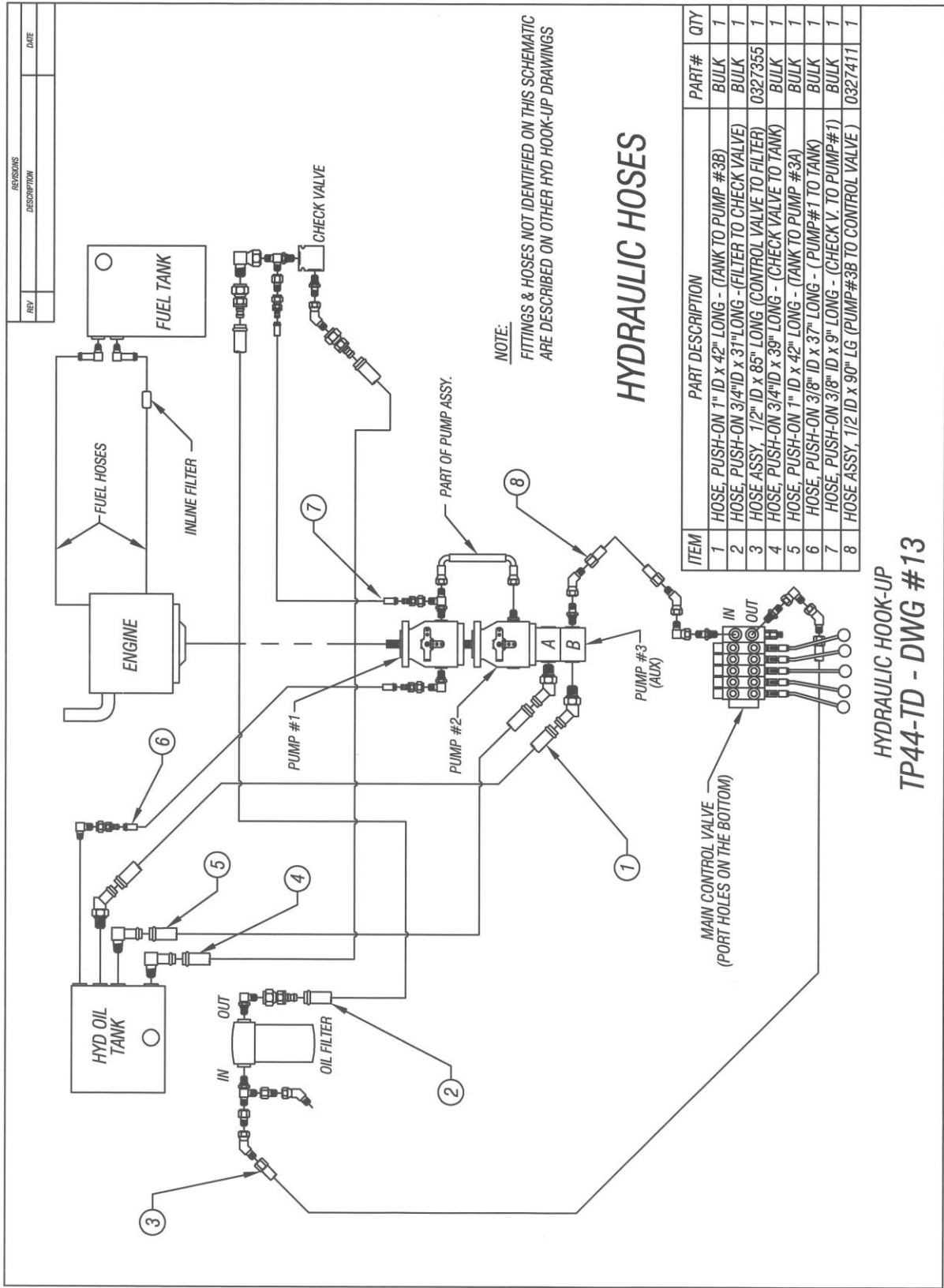


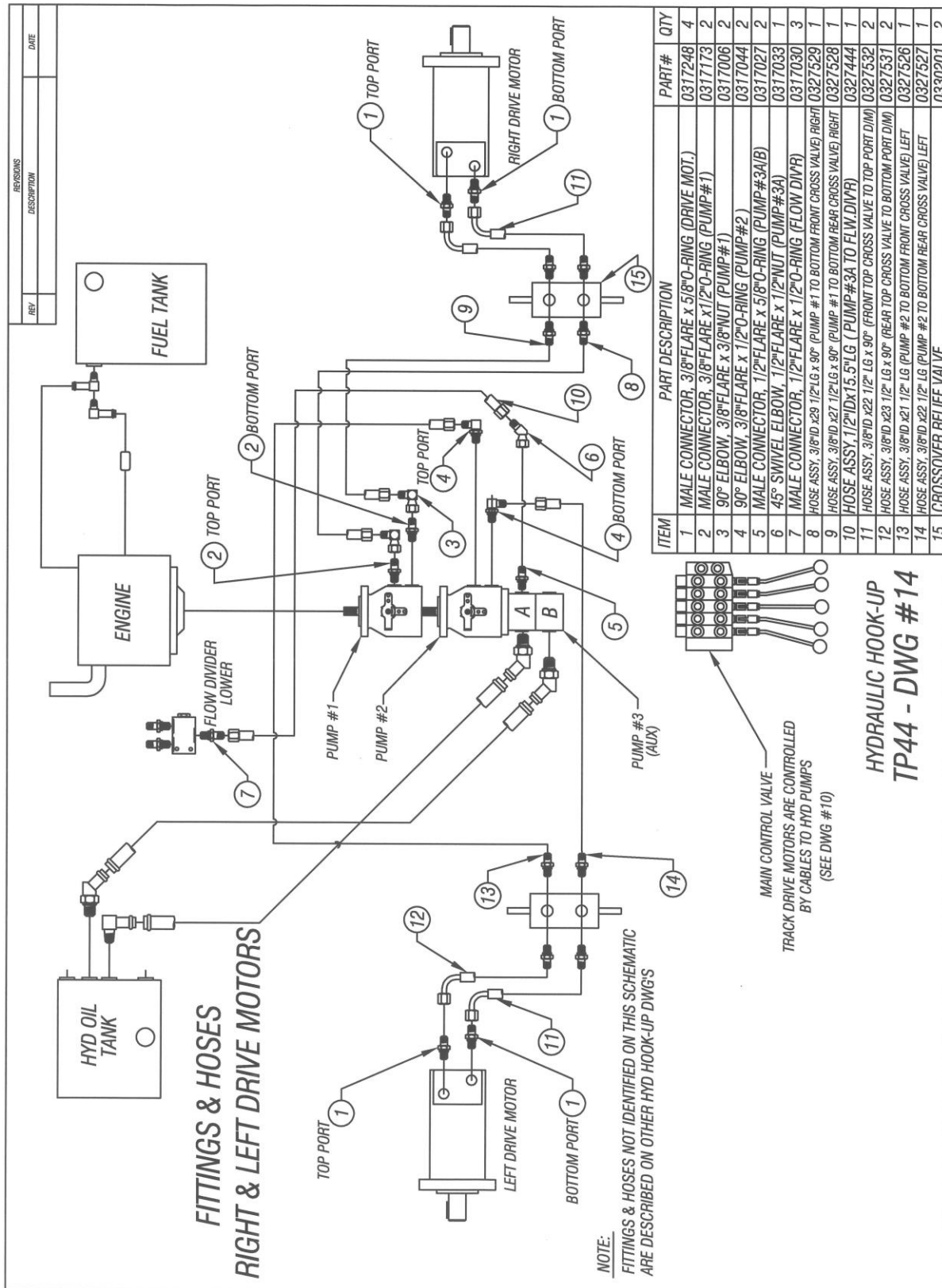




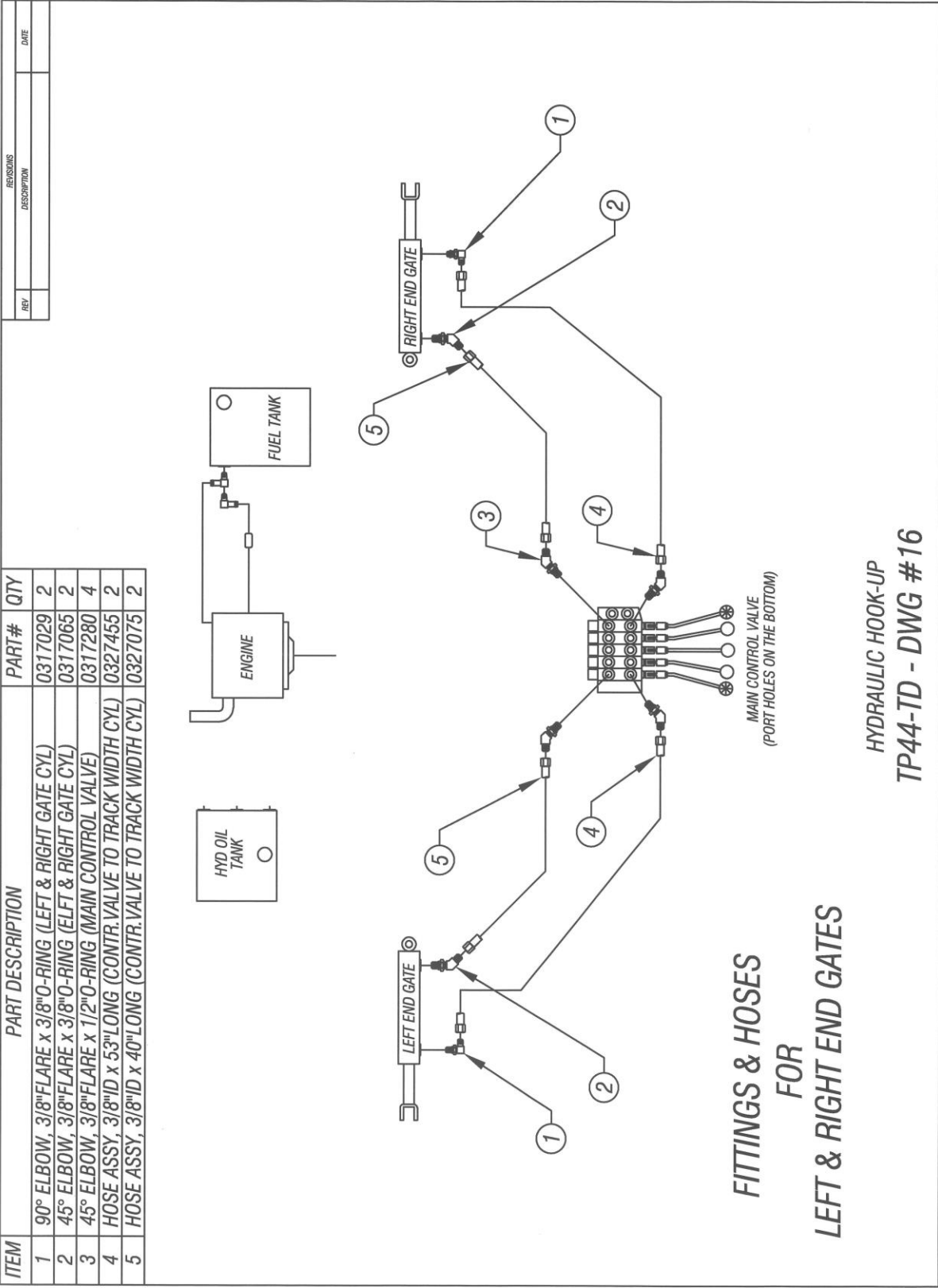


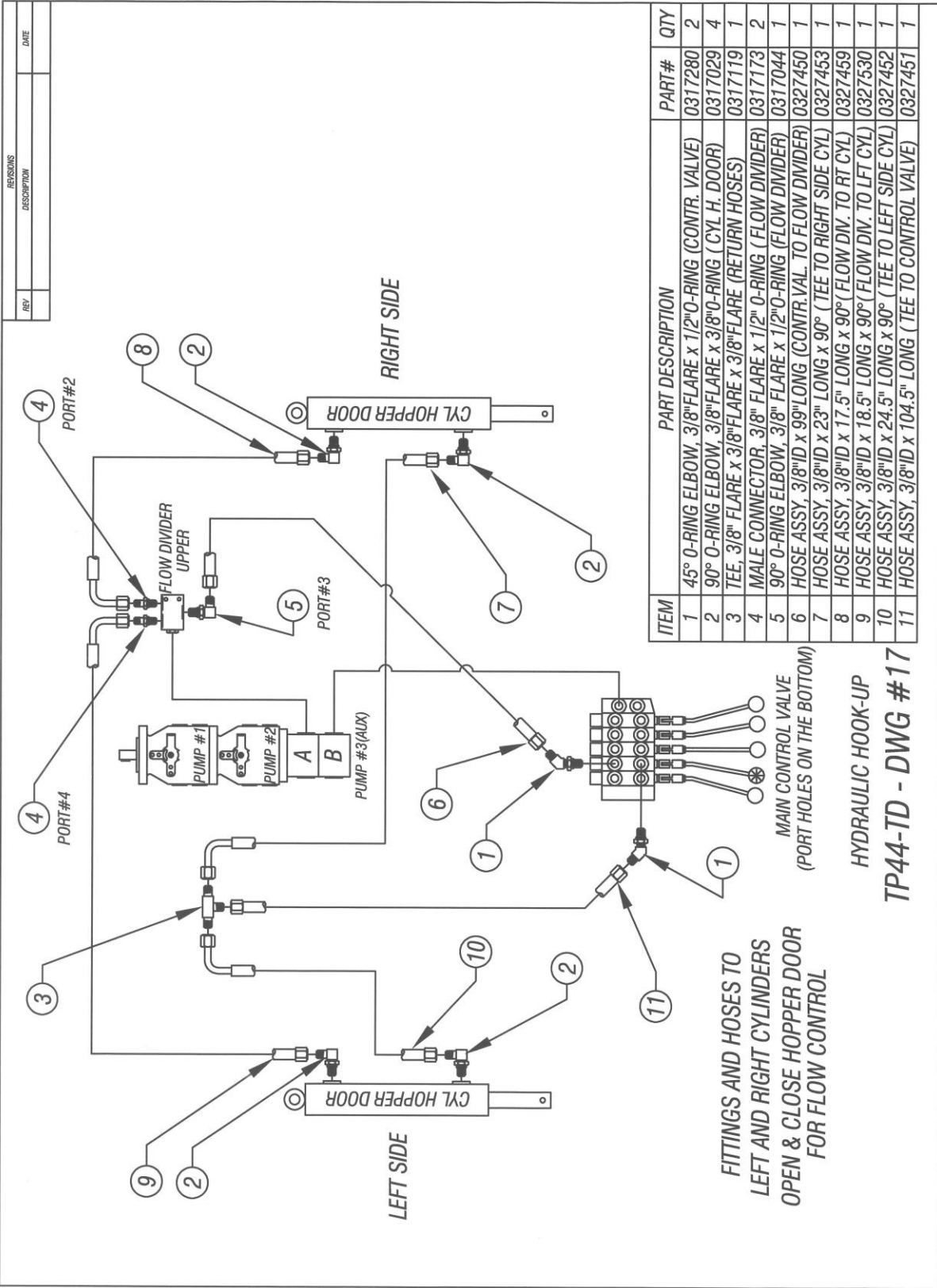


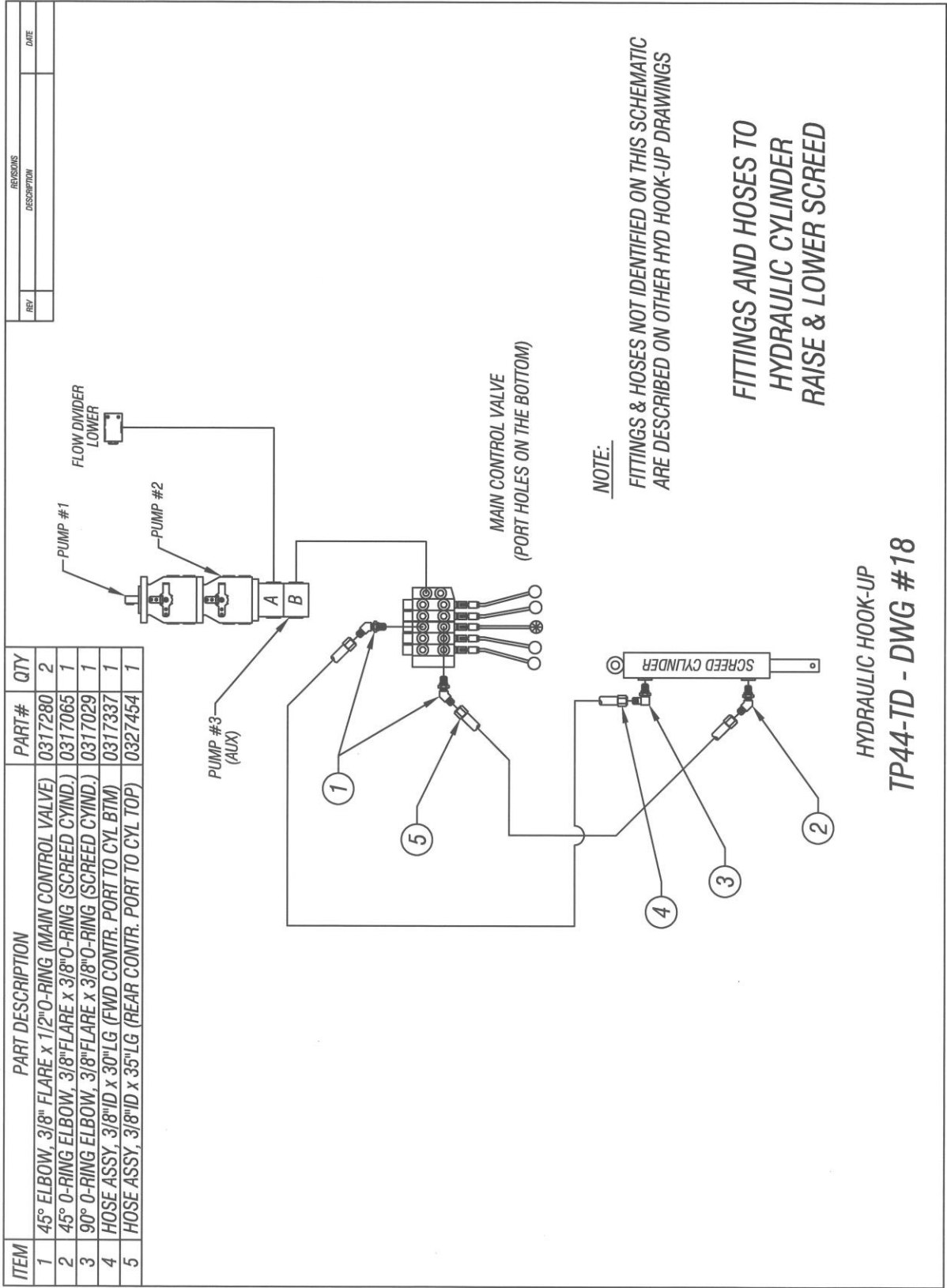




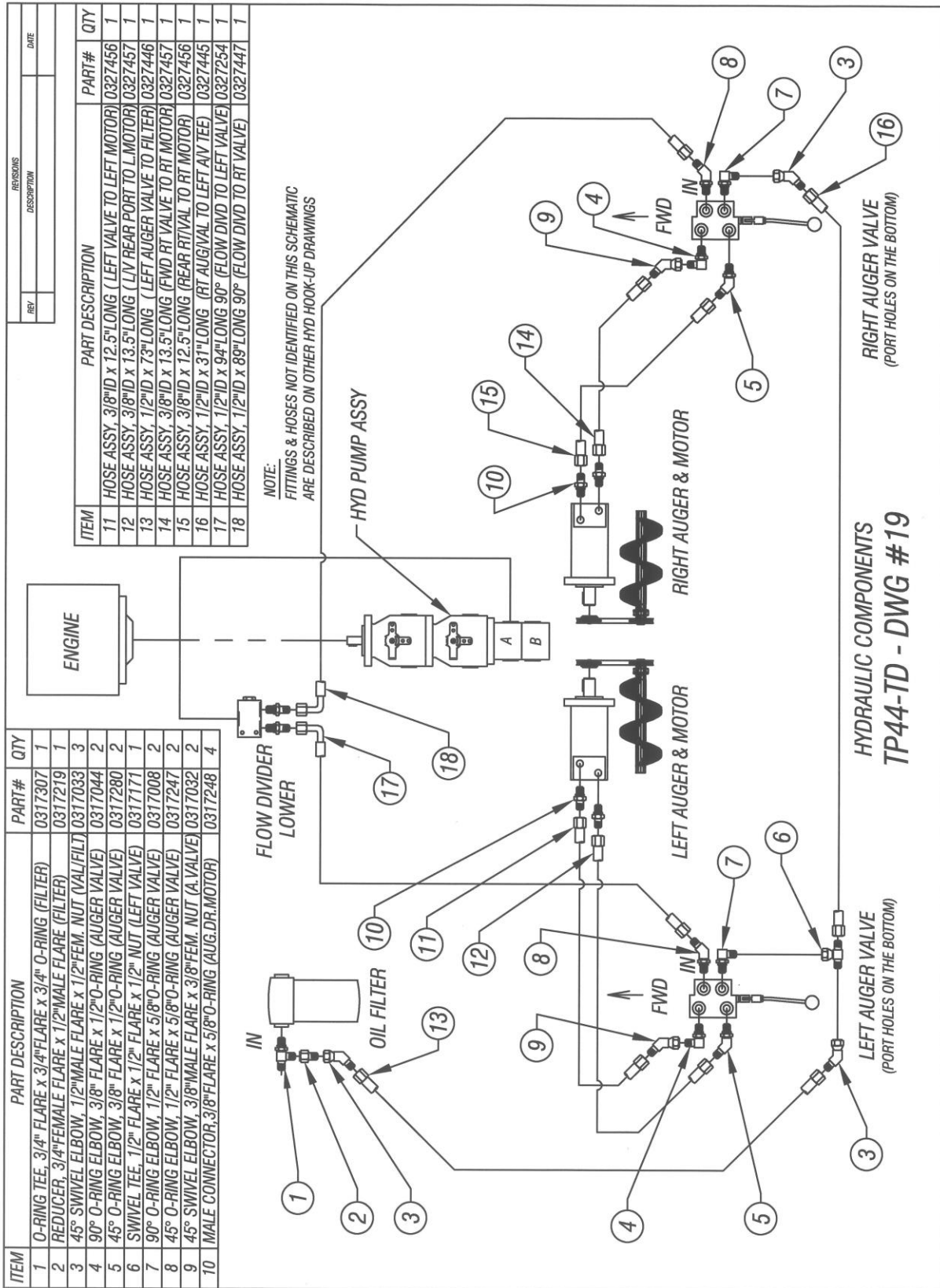






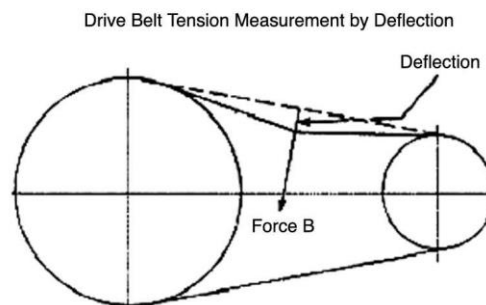






BOLT SIZE	Thds Per Inch	SAE Grade 5	SAE Grade 8
1/4	20 28	10 ---	14 ---
5/16	18 24	19 ---	29 ---
3/8	16 24	33 ---	47 ---
7/16	14 20	54 ---	78 ---
1/2	13 20	78 ---	119 ---
9/16	12 18	114 ---	169 ---
5/8	11 11	154 ---	230 ---
3/4	10 10	257 ---	380 ---
7/8	9 9	382 ---	600 ---
1	8 8	587 ---	700 ---

Below is a quick reference chart for various “Flat Head Cap Screws” and the torque recommendations.



Deflection should be 3/8" when  
8-12 lbs. push is applied at "B"

## WARRANTY POLICY

Please remember to complete and return your Warranty Card and Dealer Delivery Report. Warranty Claims will not be considered if the Warranty Card and Dealer Delivery Report have not been returned to Salsco.

Your Salsco Commercial or Turf Equipment product is a commercial type product and is normally manufactured and sold for commercial or industrial use. **Salsco will, for the original purchaser, for one (1) year from the date of purchase (90 days if used for rental purposes) repair or replace, free of charge, any SALSco part or parts found to be defective in material, workmanship or both.** Any transportation or shipping charges will be borne by the purchaser. If, during the warranty period stated above, the product does not function properly due to defect, simply contact Salsco and follow the Warranty Procedures included in this manual.

This warranty **does not** include:

- Incidental or consequential damages and is exclusive of any implied warranties.
- Normal maintenance parts, including, but not limited to hoses, chains, belts, filters, lubricants, etc.
- Parts or components, which are covered under the original manufacturer warranty, including, but not limited to engines, pumps, and motors.

### WARRANTY PROCEDURE

In order for Salsco to consider your warranty claims in a timely manner you must follow the simple procedures listed below:

#### MACHINE OR PART FAILURE

- Call our service department for helpful instruction on how to correct or repair the problem. Preventive maintenance will also be suggested.
- When ordering parts for Warranty issues, you **MUST** retain possession of the old parts in question until notified with respect to returning the parts to Salsco or other disposition.
- Warranty Claims **MUST** be filed within 30-days from completion of the work performed. Contact our office for an electronic warranty claim form.
- Fill in all information requested on the warranty claim form, a copy of which is included in this manual, (date of purchase, company name, address, etc.). List all parts used. Make sure part numbers are correct. You can obtain these from your manual. (include good description of problem; i.e. "leaking from spool" rather than "leaking").
- It is our goal to consider and reach a disposition on each Warranty Claim within 30-days from the date that it is received. Therefore it is important that you respond promptly to any request for further information. Claims with no response to inquiries will be closed as **"denied for lack of response"** 90-days from the date of request.
- Email, Fax or Send Warranty Claim form to our Warranty Department. – **Warranty on parts most often requires return of the parts that were replaced.** **DO NOT DISCARD OLD PARTS UNTIL YOU HAVE RECEIVED A DETERMINATION AS TO WHETHER THESE PARTS MUST BE RETURNED.**
- Our Warranty Department will contact and instruct you on how to return the Parts to Salsco on an RA #. Returns **MUST** be made within 30-Days from issuance of RA #. **FREIGHT CHARGES ON RETURN OF PARTS IS THE RESPONSIBILITY OF THE CUSTOMER.** Normal pre-delivery adjustments are not covered under warranty. Labor Warranties are based on reasonable time allowances as determined by Salsco, Inc. and paid at 75% of posted labor rate. **TRAVEL TIME IS NOT REIMBURSED UNDER THE WARRANTY POLICY.**
- Be sure to put the RA form inside the box that you are shipping back, also be sure to put on the outside of the box "Return of Goods" and the RA #.
- Ship returns via a traceable method such as UPS Ground Service. Be sure that the shipment is insured for the appropriate value. If uninsured parts are lost, we cannot issue a credit.

**PLEASE NOTE:** *Warranty forms should be filled out completely.*

**PREVENTIVE MAINTENANCE IS YOUR BEST INSURANCE AGAINST EQUIPMENT FAILURE. BE SURE TO READ THIS MANUAL, ESPECIALLY THE MAINTENANCE, OPERATING AND CAUTION SECTIONS.**

SALSCO, INC., 105 School House Rd.  
Cheshire, CT 06410  
800-872-5726, 203-271-1682  
203-271-2596 (Fax)  
sales@salsco.com, [www.salsco.com](http://www.salsco.com)

**WARRANTY CLAIM FORM**

SALSCO, INC.  
105 School House Rd.  
Cheshire, CT 06410

Phone: (203) 271-1682, (800) 872-5726  
Fax: (203) 271-2596  
Email: s.clark@salsco.com  
Website: www.salsco.com

**END OWNER****Date Submitted:**

Name:	Phone:	Work Order #:
Email:	Fax:	Office Use Only
Address:		Date Rec'd
		Cust ID:
		Salsco WC
		Salsco RA

**PURCHASED FROM**

Name:	Phone:	Date Approved:
Email:	Fax:	Date Rejected:
Address:		Processed By:
		Dir. Del Report on File: YES NO
		Warranty Card on File: YES NO
		Part(s) Total:

**Equipment/Warranty Information (Must be complete)**

Purchase Date:	Invoice #	Date Failed:	Total Approved:
Model #:	Serial #:	Repair Date:	Approved/Rejected:
			Name:
Hrs Used:	Primary Use:		Reason for Rejection:
Warranty Claim/Work Order#:			
Was a Salsco Return Authorization # issued for repairs or			
Return of Parts? YES NO			Suggested Preventative Maint:
Probable Cause of Failure:			

**Work Performed/Comments on Repair:**


Shop Labor Rate:						Submitted By:
Total Labor Hours to Repair:						Printed Name:
Parts Required for repair						
Salsco Part #: Description:						Qty. Price Each Total Inv #
						\$
						\$
						\$
						\$

Fill in all information requested on warranty claim form.

**INCOMPLETE FORMS CANNOT BE PROCESSED & WILL BE RETURNED**

List all parts used. Make sure part numbers are correct. Any parts that you believe to be defective or any parts that break should be retained for possible inspection until after the warranty has been paid or part has been replaced.

SALESMAN ID # \_\_\_\_\_

SALES MANAGER'S NAME \_\_\_\_\_

800-872-5726, 203-271-1682  
203-271-2596 (Fax)**SALSCO, INC.**  
105 School House Road  
Cheshire, CT 06410**www.salsco.com**  
sales@salsco.com**DEALER DELIVERY REPORT**

MODEL:		SERIAL NO:		
DEALER:		CITY:	STATE:	ZIP:
PURCHASER:	ADDRESS:	CITY:	ST:	ZIP:
<p>The undersigned dealer warrants that the above-described machine was carefully inspected, adjusted and prepared for delivery before delivery to the purchaser; that both the operation and maintenance of the machine were explained to the purchaser; and that a copy of the Owner's Instruction Manual were given to the purchaser and his attention called to Our Warranty and any operating instructions included in the manual and caution notes.</p>		<p>The undersigned purchaser certifies that the operation and maintenance of the above-described machine have been explained to him; acknowledges receipt of a copy of the Owner's Instruction Manual and Our Warranty Policy printed in said Instruction Manual and Caution Notes. I also understand that it is my responsibility to explain and make Salsco manuals available to new operators.</p>		
DATE:		DATE:		
SIGN BY:		PURCHASER:		
PHONE:		PHONE:		
FAX:		FAX:		
E-Mail:		E-Mail:		

MODEL:		SERIAL NO:		
<b><u>SALSCO LIMITED WARRANTY CARD</u></b>				
DATE PURCHASED:				
PURCHASER:	ADDRESS:	CITY:	ST:	ZIP:
EMAIL:		PHONE:		
DEALER:		STATE: CT		
Will this equipment be used commercially?		Yes	No	
Did Dealer service this equipment and instruct you in its care and safe operation?		Yes	No	
Did you receive an "Operation & Service Manual" and safety pamphlet?		Yes	No	
Signed		Purchaser		
<b><u>NOTICE:</u></b> IMPORTANT: THIS CARD MUST BE FILLED OUT COMPLETELY AND MAILED TO THE FACTORY WITHIN 10 DAYS OF PURCHASE DATE, OR YOUR LIMITED WARRANTY WILL BE VOIDED.				

## SERVICE RECORD

If kept properly, this schedule will help track problems in the future.

[illegible]

MODEL # \_\_\_\_\_ S/N \_\_\_\_\_

DATE PURCHASED:\_\_\_\_\_