

**Quality of Workmanship
Innovative Design
Built to Last!**



ROLL-N-GO, EHA - 09105 Operators And Parts Manual



MANUFACTURER OF OUTDOOR POWER EQUIPMENT

Products for Turf & Lawncare, Rental, Construction, Tree Care, Wood Processing, Nursery & Farm Industries

**3-1/2" - 18" Capacity, Gas, Diesel, & PTO Wood/Brush Chippers - Slab Chippers
Gas, Electric & Tow Behind Rollers - Tranz-Former Roller - CRV Core Recovery Vehicle
Mini-Paver - Mini-Track Paver - Cobra Curbers - Scorpion Router - Concrete Paver
Chipper Shredder Vacuums - Tailgate & Truckloader Vacuums
9 cu. yds. - 50 cu. yds. Per Hour, Electric, PTO & Diesel Powered Shaving Mills**



105 Schoolhouse Road
Cheshire, CT 06410 U.S.A.
800-872-5726 (Toll Free), 203-271-1682, 203-271-2596 (Fax)
www.salsco.com, sales@salsco.com

TABLE OF CONTENTS

MODEL 0009105 – ROLL-N-GO, EHA

COVER & TABLE OF CONTENTS.....	Pages 1-2
STATEMENT OF FACT	Page 3
SPECIFICATIONS & FEATURES	Page 4
MACHINE REGISTRATION	Page 5
HYDRAULIC OIL, MOBIL 1-15W-50 SYNTHETIC ENGINE OIL (MSDS SHEET).....	Pages 6-7
PARTS DIAGRAMS	Pages 8-21
SWITCH & CYLINDERS WIRING DIAGRAM.....	Page 22
SEAT SWITCH WIRING & SCRAPER KIT DIAGRAMS.....	Pages 23-24
HYDRAULIC DRAWINGS.....	Pages 25-27
CROSS CONTAMINATION PREVENTION KIT, OPTION.....	Page 28
TORQUE CHARTS	Page 29
WARRANTY POLICY & PROCEDURE	Pages 30
COPY OF WARRANTY CLAIM FORM.....	Pages 31-32
COPY OF DEALER DELIVERY REPORT & WARRANTY CARD.....	Page 33
SERVICE INTERVAL SCHEDULE	Page 34
SERVICE SCHEDULE LOG	Page 35

SALSCO, INC.

105 Schoolhouse Road
Cheshire, CT 06410 USA
800-872-5726, 203-271-1682
203-271-2596 (Fax)
www.salsco.com, sales@salsco.com

STATEMENT OF FACT

You have just purchased the highest quality, most dependable, GREENS ROLLER on the market today. This unit has the ability to meet exact standards and perform for years with minimum downtime. **HOWEVER**, it cannot read nor will it understand this manual no matter how long you leave it on top of the machine.

It is your responsibility to read and understand this manual; it is also your responsibility to be certain this information is passed along to anyone who is expected to operate this equipment. Should you choose not to read, understand and pass along the information provided you, please expect equipment failure and possible injuries to persons around this equipment.

For the safety of the operator, it is imperative that this manual is carefully read and understood.

Once you have read this manual, it is your responsibility to be sure that all new operators read and understand this manual, especially all cautions stated.

As a manufacturer of equipment, we have a responsibility to design a safe piece of equipment. NOTE: The important safeguards and instructions in this manual are not meant to cover all possible conditions and situations that may occur. It must be understood that common sense, caution, and care are factors, which cannot be built into any product. These factors must be supplied by the person(s) caring for and operating this equipment.

ONLY YOU CAN PREVENT ACCIDENTS!

ROLL-N-GO, EHA - SPECIFICATIONS AND STANDARD FEATURES

WARRANTY:	5 Year Limited Warranty
ENGINE:	13HP Honda, electric start, rubber mounted to reduce vibration.
FUEL TANK:	6 gallon, CARB approved canister fuel tank.
CONTROLS:	On/Off switch, choke & fuel. Raise lower rocker switch for wheels.
HOUR METER:	Standard.
BATTERY:	12 Volt, 300 CCA, automotive type.
ENGINE COOLING FAN:	Cooling fan - Standard
SEAT:	Molded cushion, arm rest with protective edge trim. Neutral safety switch & forward/reverse slide adjustment, rubber mounted to reduce vibration.
STEERING SYSTEM:	Both rolls articulate and oscillate to smooth the surface without changing the undulations designed into the green.
STEERING WHEEL:	13-1/4" diameter, automotive type tilt steering wheel. 13-1 ratio.
MAIN FRAME:	2-1/2" x 2-1/2" x 1/8" steel square tube. Fully gusseted and continuous welds.
DRIVE ROLLS:	Two (2) oscillating steel rolls, both driven for positive traction. 1-1/4" roll mounting bearing. 10-3/4" diameter, 36" long with with beveled ends. Rolls are machined to within two thousandths of an inch concentricity.
TRACTION DRIVE:	Hydraulic pump to 2 hydrostats - 1 to each roll. Chain drive from hydraulic motors to rolls. #50 Chain & Sprockets.
CLIMBING TRACTION:	Up to 40°.
BRAKES:	Parking brake.
HYDRAULIC COMPONENTS:	Hoses: SAE JIC hose ends & fittings. 3,000 P.S.I. working, 12,000 P.S.I. burst. Motors: Two (2) Char-Lynn 7.3 cubic inch displacement Pump: One (1) Hydro-Gear, 0.97 cubic inch displacement.
ELECTRIC HYDRAULIC CYLINDERS:	Four (4) double action, 6" stroke.
ROLLING SWATH:	36"
SPEED:	0 - 11 MPH
GROUND PRESSURE:	10.2 P.S.I. without water, 11.6 P.S.I. with water.
TIRE/WHEEL ASSYS.	Four (4) 8.5 x 8.5-8, 6 ply, turf tires hydraulically operated. Two are drive wheels.
GUARDS/DECALS:	All moving parts guarded. Full set of safety decals.
PAINT:	Orange, polyester powder coat paint provides excellent outdoor weatherability and offers protection against ultraviolet discoloration. All parts painted separately.
ROLLER OPTIONS:	Rotary Brush System, LED Light Kit, Topdressing Brush Kit, Spike-Air Kit.
TRANSPORT DIMENSIONS	80" long x 68" Wide x 59" High- 1480 lbs.
ROLLING DIMENSIONS	68" long x 36" Wide x 59" High - 1480 lbs.

Rev. 3/27/2020

Specifications & Options Subject to Change Without Notice.

MACHINE REGISTRATION

MANUFACTURED BY:

SALSCO, INC.
105 Schoolhouse Rd., Cheshire, CT 06410
800-872-5726, 203-271-1682, 203-271-2596 (Fax)
sales@salsco.com www.salsco.com

THIS MANUAL COVERS MODEL(s): _____, _____

This company reserves the right to discontinue, add improvements to, or change the design of any model or product at any time without obligation to improve existing machines, either by changing the design or adding new parts.

It has been and will continue to be the policy of SALSCO to update existing machines at its own discretion. Whenever possible, new designs will be made in such a way that they can be "Retro Fit" if so desired.

Record in the space provided below the model and serial number of this unit. Please retain these numbers for future reference.

NO PARTS ORDERS will be accepted **WITHOUT A SERIAL NUMBER, MODEL NUMBER AND PART NUMBERS**. All part numbers are listed in this manual.

Serial Number

Model Number

NOTE: Be sure to complete your warranty card. This will ensure immediate processing of any warranty claims.

READ AND UNDERSTAND THIS MANUAL BEFORE STARTING THE MACHINE

Mobil

Mobil 1™ 15W-50

Advanced Full Synthetic Engine Oil

Product Description

Mobil 1™ 15W-50 is an advanced full synthetic engine oil designed to help provide exceptional wear protection for a smooth driving experience. Mobil 1 15W-50 meets or exceeds the requirements of the industry and car manufacturers' standards required for high-performance turbo-charged, supercharged gasoline and diesel multi-valve fuel injected engines. Mobil 1 15W-50 is a winning, race-proven technology. It is especially suited for a wide variety of motorsports applications, towing, and other severe service situations. Mobil 1 15W-50 helps to provide outstanding engine oil performance and protection for the winning edge. Mobil 1 is the official motor oil of NASCAR.

Features and Potential Benefits

Mobil 1 15W-50 is made with a proprietary blend of ultra high performance synthetic basestocks fortified with a precisely balanced component system. Mobil 1 15W-50's heavier viscosity together with this high-performance component system helps to provide the ultimate in dynamic lubricant protection. This feature is supported, not only by meeting or exceeding the toughest industry performance standards, but also it is proven in gruelling racing applications. Key features and potential benefits include:

Features	Advantages and Potential Benefits
Advanced Full synthetic formula	Helps prevent deposits and sludge build-up to enable long engine life Excellent overall lubrication and wear protection performance for many driving styles
Outstanding thermal and oxidation stability	Outstanding performance during the maximum oil change interval recommended in a vehicle's owners manual
Extra anti-wear additive	Extra protection for severe service

Applications

Mobil 1 15W-50 is recommended for all types of vehicles, suitable for use in high-performance turbo-charged, supercharged gasoline and diesel multi-valve fuel injected engines found in passenger cars, light vans and trucks.

- Mobil 1 15W-50 is suitable extreme engine stress conditions, where conventional oil often may not perform.
- Mobil 1 15W-50 is not recommended for 2-Cycle or aviation engines, unless specifically approved by the manufacturer.

Specifications and Approvals

Mobil 1 15W-50 meets or exceeds the requirements of:	
API	SN, SM, SL, SJ
ACEA	A3/B3

According to ExxonMobil, Mobil 1 15W-50 is of the following quality level:

API	CF
-----	----

Typical Properties

Mobil 1 15W-50	
SAE Grade	15W-50
Viscosity @ 100°C, cSt (ASTM D445)	18
Viscosity, @ 40°C, cSt (ASTM D445)	125
Viscosity Index	160
Sulfated Ash, wt% (ASTM D874)	1.21
HTHS Viscosity, mPa•s @ 150°C (ASTM D4683)	4.5
Pour Point, °C (ASTM D97)	-39
Flash Point, °C (ASTM D92)	232
Density @15.6° C g/ml ASTM D4052)	0.87

Health and Safety

Based on available information, this product is not expected to produce adverse effects on health when used for the intended application and the recommendations provided in the Material Safety Data Sheet (MSDS) are followed. MSDS's are available upon request through your sales contract office, or via the Internet. This product should not be used for purposes other than its intended use. If disposing of used product, take care to protect the environment.

Mobil , Mobil 1 and the Pegasus design are trademarks of Exxon Mobil Corporation, or one of its subsidiaries.

1-2013

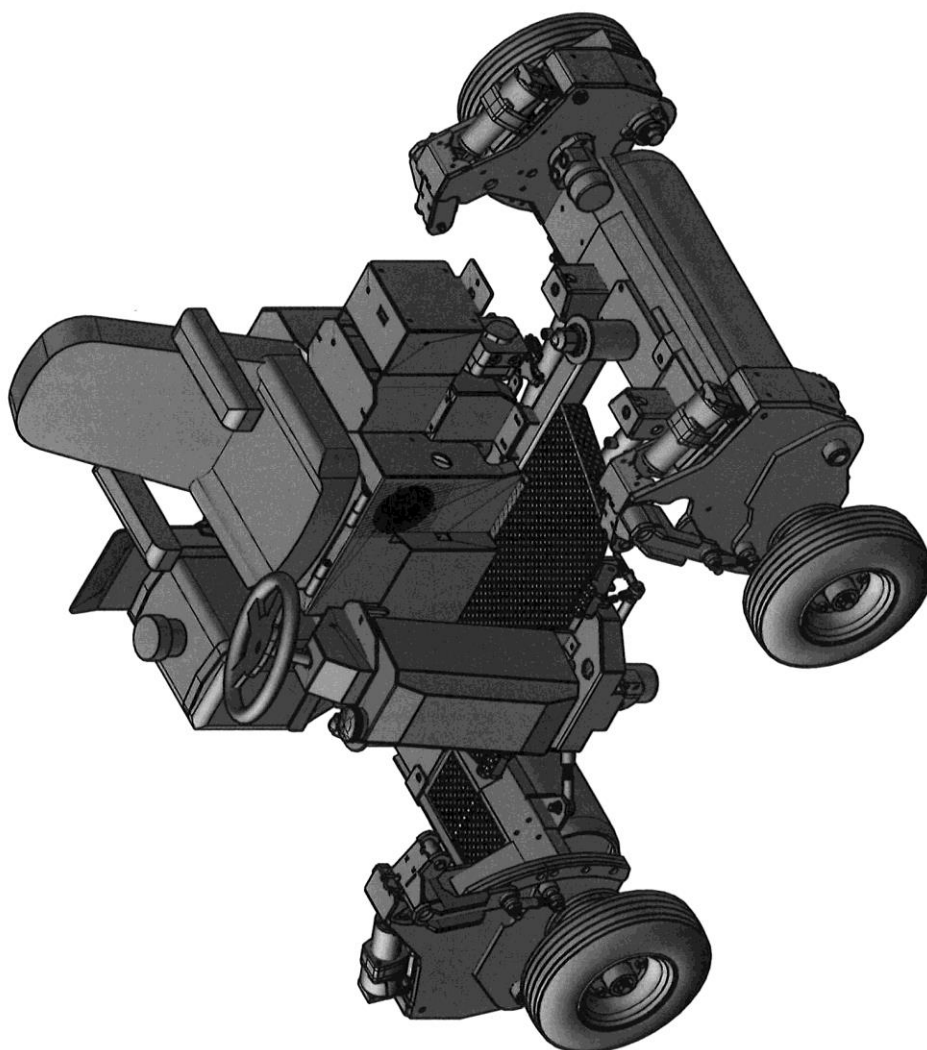
Exxon Mobil Corporation
3225 Gallows Road
Fairfax, VA 22037

1-800-ASK MOBIL (275-6624)

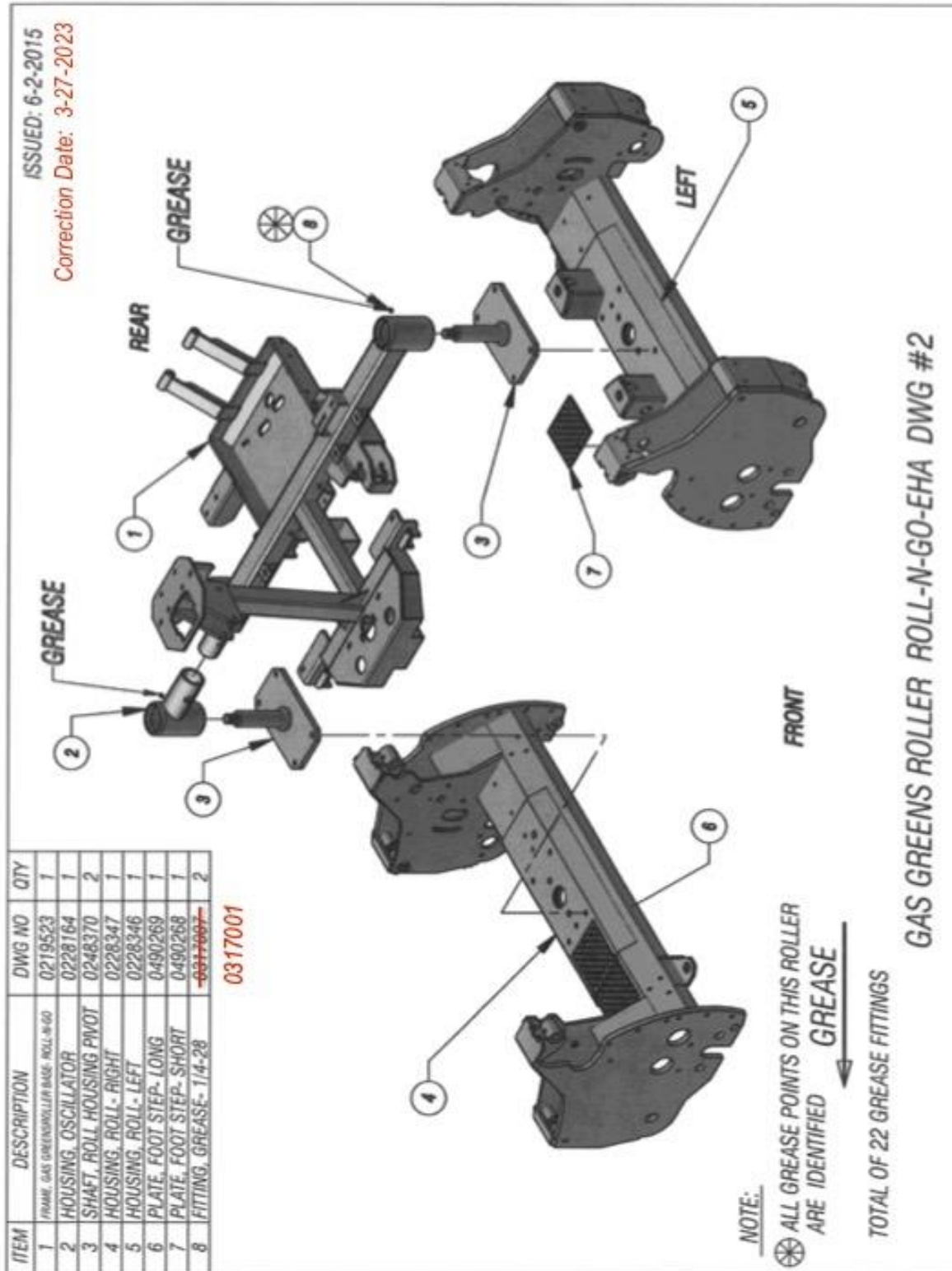
Typical Properties are typical of those obtained with normal production tolerance and do not constitute a specification. Variations that do not affect product performance are to be expected during normal manufacture and at different blending locations. The information contained herein is subject to change without notice. All products may not be available locally. For more information, contact your local ExxonMobil contact or visit www.exxonmobil.com
ExxonMobil is comprised of numerous affiliates and subsidiaries, many with names that include Esso, Mobil, or ExxonMobil. Nothing in this document is intended to override or supersede the corporate separateness of local entities. Responsibility for local action and accountability remains with the local ExxonMobil-affiliate entities.

Copyright © 2001-2013 Exxon Mobil Corporation. All rights reserved..

ISSUED: 6-16-2015



GAS GREENS ROLLER ROLL-N-GO-EHA DWG #1



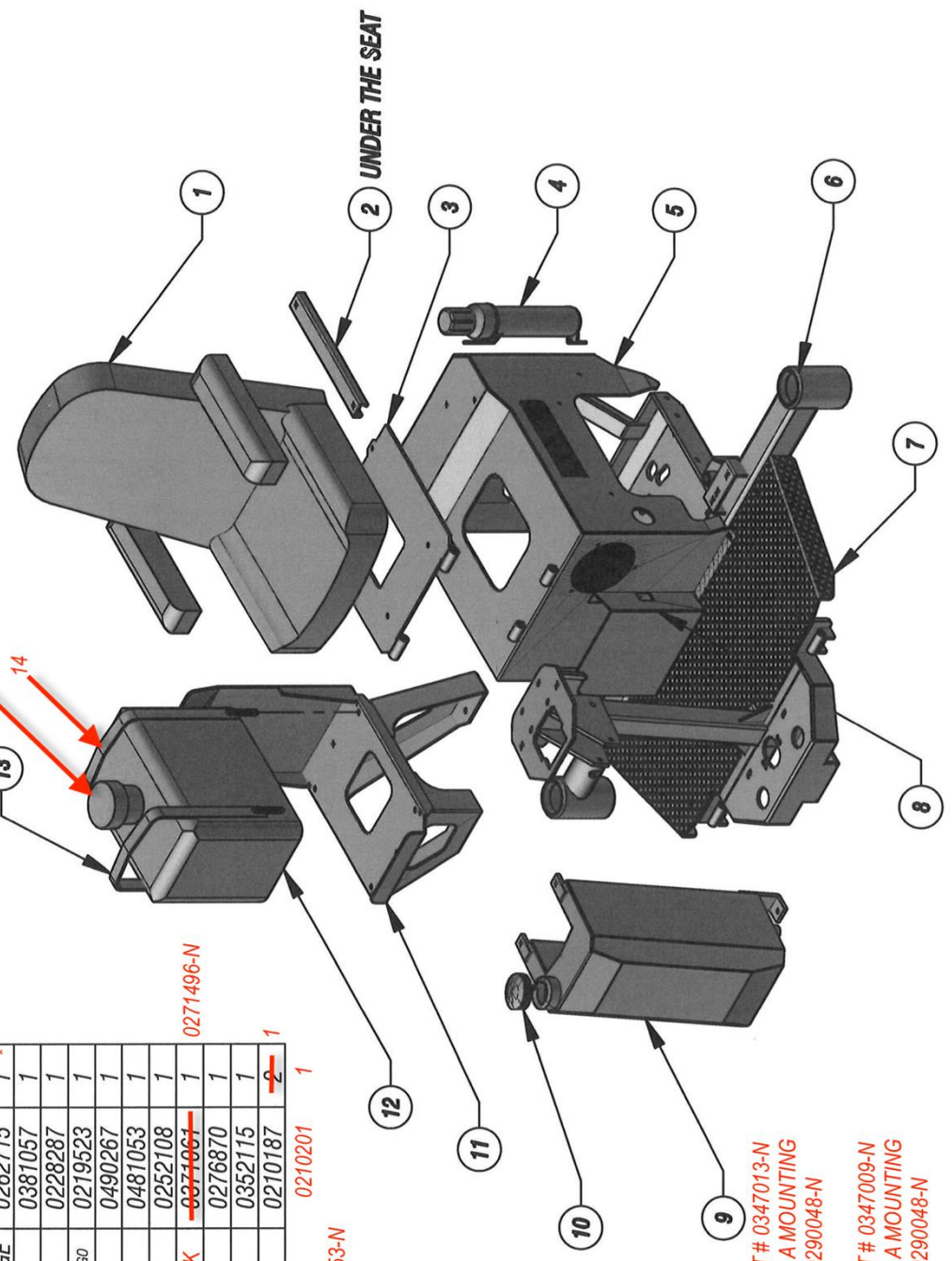
ITEM	DESCRIPTION	DWG NO	QTY
1	SEAT WITH ARM REST	0347010	1 *
2	SLIDE ASSY KIT (FOR SEAT)	0347005	1 *
3	PLATE, SEAT MOUNT & HINGE	0262715	1 *
4	HOLDER, MANUAL	0381057	1
5	HOUSING, ENGINE	0228287	1
6	FRAME, GAS GREENSROLLER BASE- ROLL-N-GO	0219523	1
7	PLATE, FLOOR	0490267	1
8	HOLDER, CLIPBOARD	0481053	1
9	TANK, HYD OIL	0252108	1
10	CAP, FILLER WITH DIPSTICK	0371061	1
11	MOUNT, FUEL TANK	0276870	1
12	FUEL TANK	0352115	1
13	CLAMP, 6 GAL. FUEL TANK	0210187	2 1
14	CLAMP, 6 GAL. FUEL TANK	0210201	1

***CARBON CANISTER - 0318053-N

ISSUED: 6-2-2015
CORRECTION DATE 3-1-2023

FUEL CAP - PART # 0371468-N

* See notes below



ITEM 1 – REPLACED WITH PART # 0347013-N
NOTE: SN'S 5175 AND BELOW, A MOUNTING PLATE IS REQUIRED – PART # 02900048-N

ITEM 2 – REPLACED WITH PART # 0347009-N
NOTE: SN'S 5175 AND BELOW, A MOUNTING PLATE IS REQUIRED – PART # 02900048-N

ITEM 3 – FOR UNITS WITH THE ABOVE LISTED SEATS ONLY. SN'S 5175 AND BELOW

GAS GREENS ROLLER ROLL-N-GO-EHA DWG #3

ISSUED: 6-2-2015

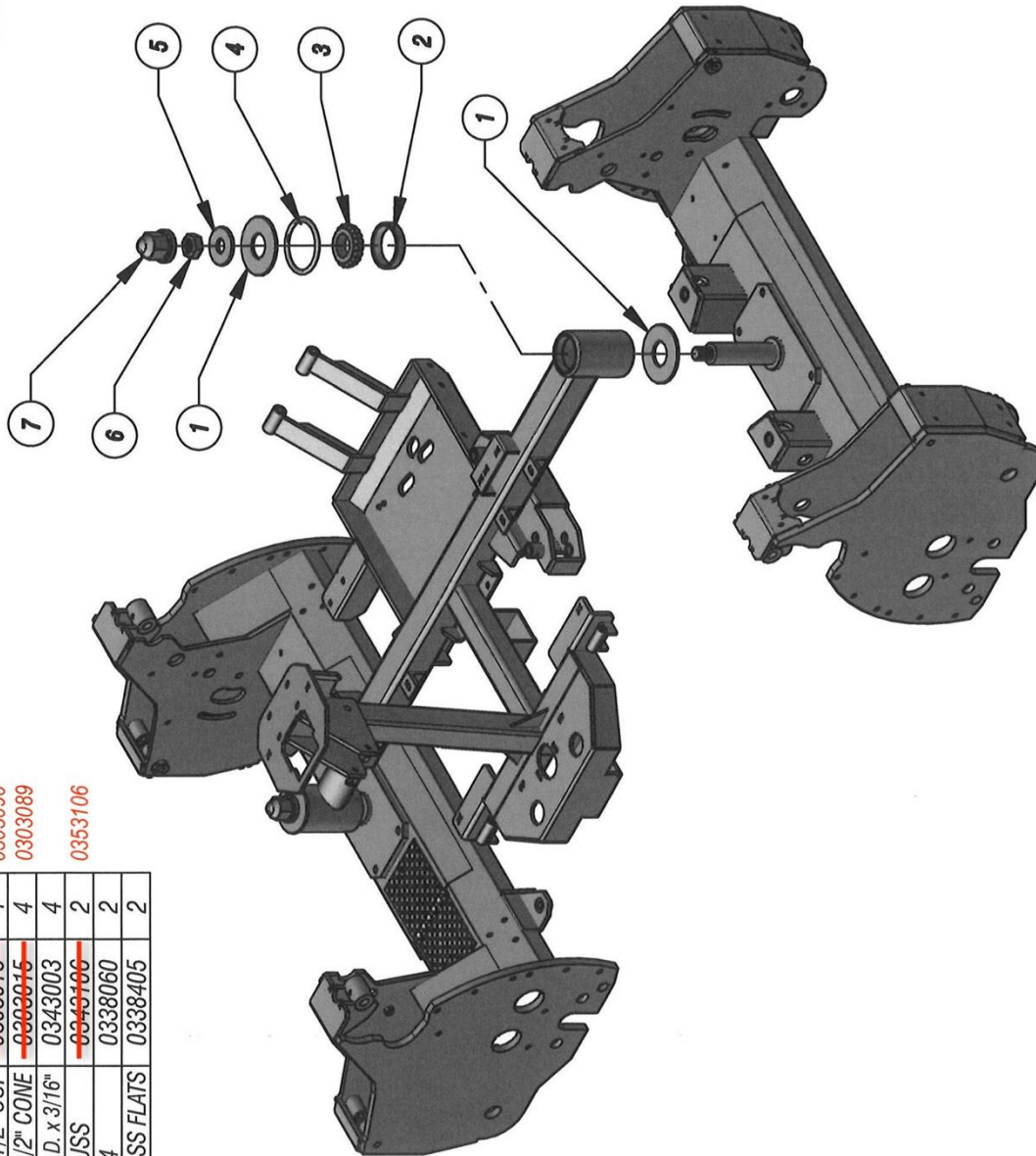
CORRECTION DATE 3-1-2023

ITEM	DESCRIPTION	DWG NO	QTY
1	WASHER, FLAT PUNCHED- 1 9/16" I.D. x 3 1/2" O.D. x 1/8"	0453117	4
2	BEARING, ROLLER- 1 1/2" CUP	0303016	4
3	BEARING, ROLLER- 1 1/2" CONE	0303015	4
4	O-RING, 3" I.D. x 3 3/8" O.D. x 3/16"	0343003	4
5	WASHER, FLAT- 3/4" USS	0343106	2
6	NUT, HEX JAM- 7/8-14	0338060	2
7	CAP, NUT- 5/16" ACROSS FLATS	0338405	2

0303090

0303089

0353106

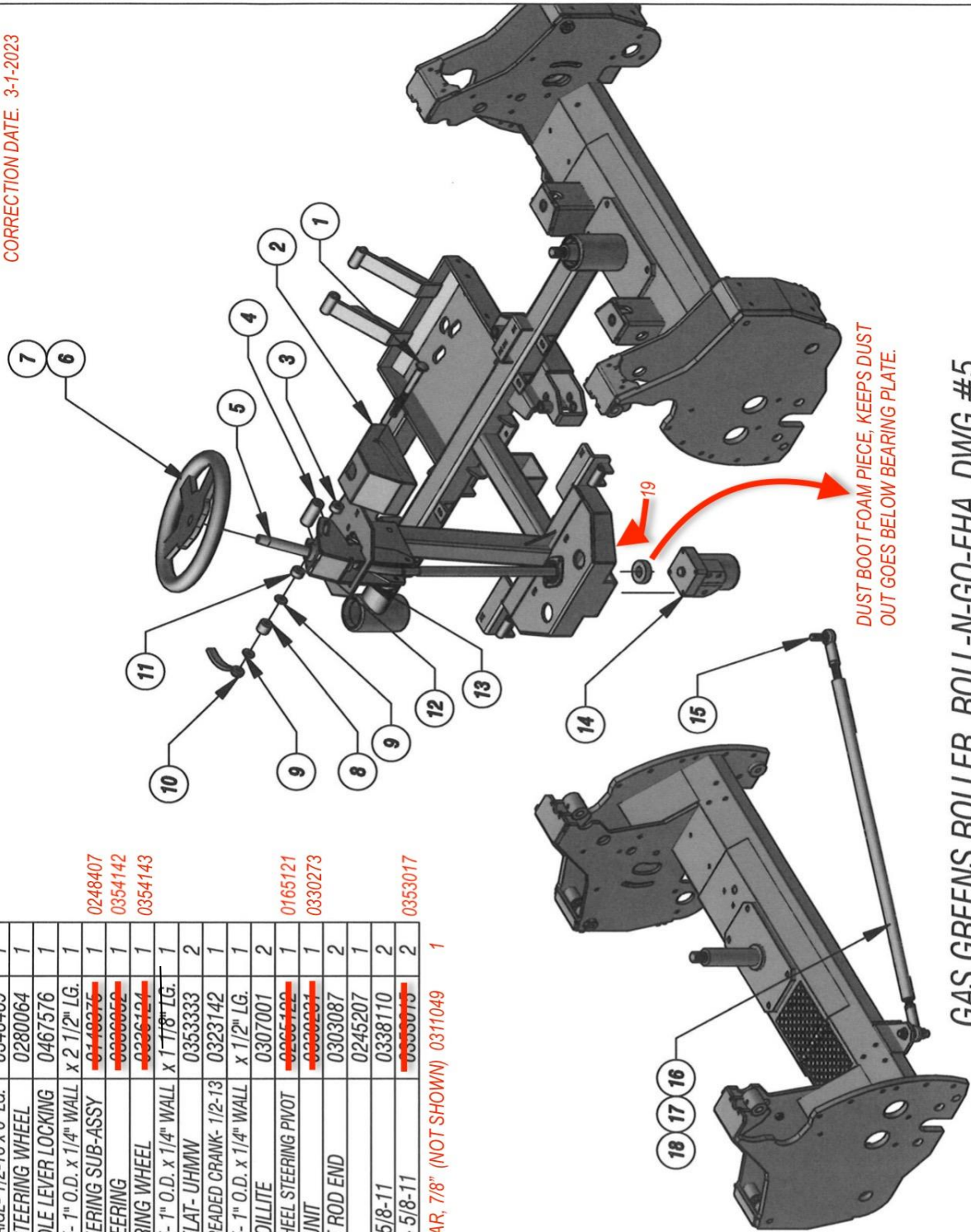


GAS GREENS ROLLER ROLL-N-GO-EHA DWG #4

ISSUED: 6-3-2015

CORRECTION DATE: 3-1-2023

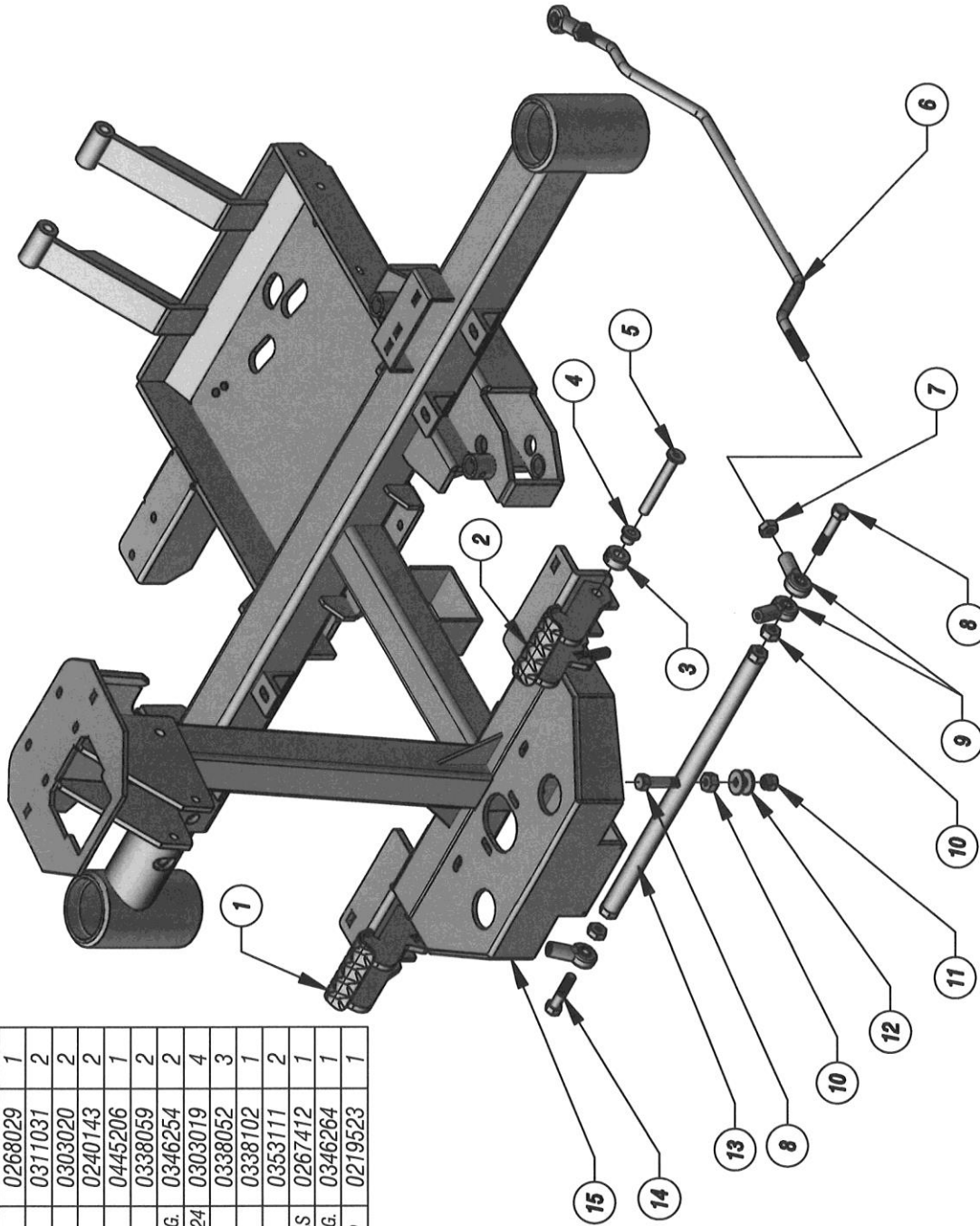
ITEM	DESCRIPTION	DWG NO	QTY
1	BOLT, CARBAGE- 1/2-13 x 6" LG.	0346469	1
2	BOX, TILT STEERING WHEEL	0280064	1
3	TUBE, HANDLE LEVER LOCKING	0467576	1
4	D.O.M. TUBE- 1" O.D. x 1/4" WALL x 2 1/2" LG.	0140375	1
5	SHAFT, STEERING SUB-ASSY	0248407	1
6	WHEEL, STEERING	0354142	1
7	CAP, STEERING WHEEL	0354143	1
8	D.O.M. TUBE- 1" O.D. x 1/4" WALL x 1 1/8" LG.		1
9	WASHER, FLAT- UHMW	0353333	2
10	HANDLE- THREADED CRANK- 1/2-13	0323142	1
11	D.O.M. TUBE- 1" O.D. x 1/4" WALL x 1 1/2" LG.		1
12	BUSHING, OILLITE	0307001	2
13	ARM, TILT WHEEL STEERING PIVOT	0165121	1
14	STEERING UNIT	0330273	1
15	BALL JOINT ROD END	0303087	2
16	TIE ROD	0245207	1
17	NUT, JAM- 5/8-11	0338110	2
18	NUT, LOCK- 5/8-11	0353017	2
19	SPLIT COLLAR, 7/8" (NOT SHOWN)	0311049	1



GAS GREENS ROLLER ROLL-N-GO-EHA DWG #5

ISSUED: 6-3-2015

ITEM	DESCRIPTION	DWG NO	QTY
1	PEDAL, FOOT- RIGHT	0268028	1
2	PEDAL, FOOT- LEFT	0268029	1
3	COLLAR, SET	0311031	2
4	BUSHING, FLANGED OILITE	0303020	2
5	PIN, FOOT PEDAL PIVOT	0240143	2
6	ROD, FORWARD REVERSE	0445206	1
7	NUT, HEX JAM- 3/8-24	0338059	2
8	BOLT, HEAVY HEX- 3/8-16 x 2 1/4" LG.	0346254	2
9	BEARING, SWIVEL ROD END- 3/8-24	0303019	4
10	NUT, HEX JAM- 3/8-16	0338052	3
11	NUT, HEX- NYLOCK 3/8-16	0338102	1
12	WASHER, FLAT- 3/8 U.S.S.	0353111	2
13	TUBE, FORWARD REVERSE PEDALS	0267412	1
14	BOLT, HEAVY HEX- 3/8-16 x 1 3/4" LG.	0346264	1
15	FRAME, GAS GREENSROLLER BASE- ROLL-N-GO	0219523	1

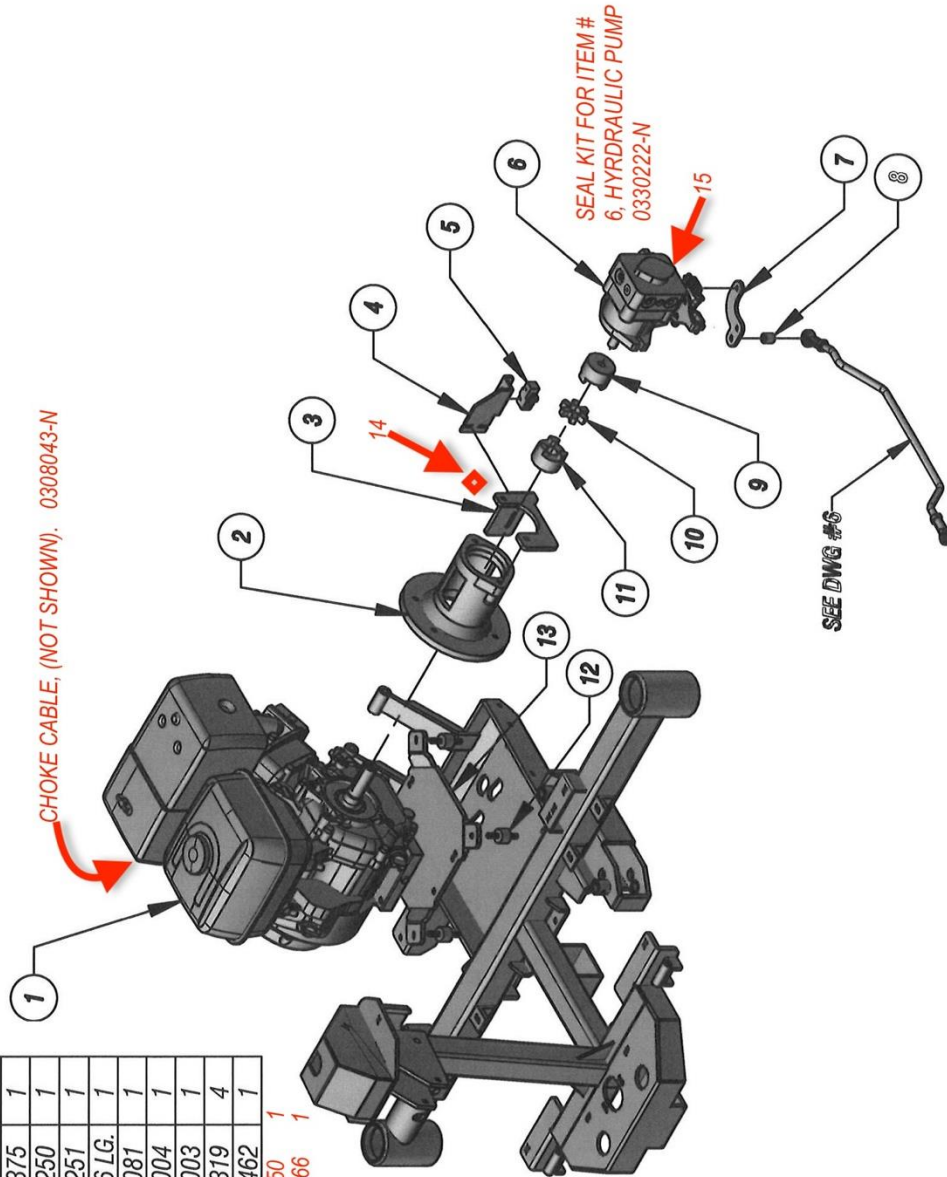


GAS GREENS ROLLER ROLL-N-GO-EHA DWG #6

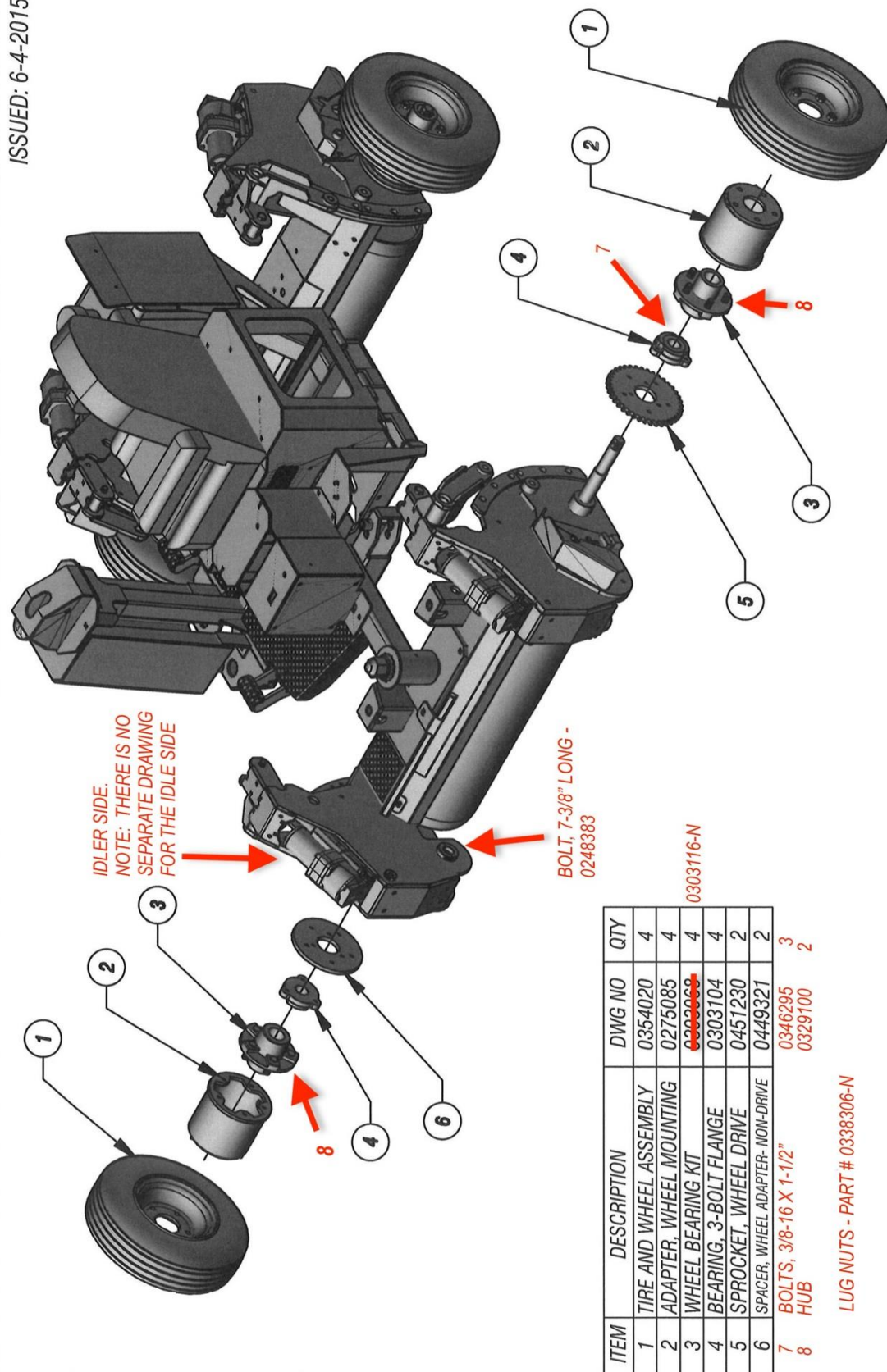
ISSUED: 6-3-2015

CORRECTION DATE 3-1-2023

ITEM	DESCRIPTION	DWG NO	QTY
1	ENGINE, 13HP HONDA	0337033	1
2	HOUSING, BELL CAST PUMP MOUNTING	0328059	1
3	SUPPORT, HYDRAULIC PUMP	0477231	1
4	BRACKET, NEUTRAL SWITCH MOUNTING	0488046	1
5	SWITCH, SNAP ACTION- 15 AMP	0315375	1
6	PUMP, HYDRAULIC- w/ AUXILIARY PUMP	0330250	1
7	LEVER, HYDRAULIC PUMP- REAR DRIVE	0433251	1
8	D.O.M. TUBE- 3/8" I.D. x 5/8 O.D. x 11/16 LG.	0313081	1
9	COUPLING, HUB 17mm BORE	0313081	1
10	COUPLING, SPIDER	0313004	1
11	COUPLING, HUB 1" BORE	0313003	1
12	MOUNT, VIBRATION CONTROL	0376319	4
13	PLATE, ENGINE MOUNT	0462462	1
14	RUBBER SANDWICH MOUNT	0376250	1
15	AUXILIARY PUMP ONLY	0330266	1



GAS GREENS ROLLER ROLL-N-GO-EHA DWG #7



GAS GREENS ROLLER ROLL-N-GO-EHA DWG #8

ITEM	DESCRIPTION	DWG NO	QTY
1	TIRE AND WHEEL ASSEMBLY	0354020	4
2	ADAPTER, WHEEL MOUNTING	0275085	4
3	WHEEL BEARING KIT	0303069	4
4	BEARING, 3-BOLT FLANGE	0303104	4
5	SPROCKET, WHEEL DRIVE	0451230	2
6	SPACER, WHEEL ADAPTER-NON-DRIVE	0449321	2
7	BOLTS, 3/8-16 X 1-1/2"	0346295	3
8	HUB	0329100	2

LUG NUTS - PART # 0338306-N

ITEM	DESCRIPTION	DWG NO	QTY
1	ARM, WHEEL PIVOT MOUNTING- LEFT REAR	0265157	1
2	ARM, WHEEL PIVOT MOUNTING- RIGHT REAR	0265155	1
3	ADJUSTER, IDLER TENSION	0201077	2
4	HEX HEAD CAP SCREW- 5/8-11 x 2 1/2" LG.	0346518	2
5	SPROCKET- #50BB17H	0351107	2
6	WASHER, FLAT- 5/8" SAE	0353110	2
7	NUT, HEX NYLOCK- THIN- 5/8-11	0338113	2
8	SPROCKET, WHEEL DRIVE	0451230	2

ITEM	DESCRIPTION	DWG NO	QTY
9	ROLLER CHAIN- #50H61 PITCHES	0309024	2
10	MASTERLINK- #50HCHAIN	0309033	2
11	SPROCKET- #50BS16	0251245	2
12	BEARING, 3-BOLT FLANGE	0303104	4
13	SHAFT, IDLER- DRIVE SIDE	0448377	2
14	GUARD, CHAIN- LEFT	0221642	1
15	GUARD, CHAIN- RIGHT	0221640	1

ISSUED: 6-4-2015

CORRECTION

DATE: 3-1-2023

0309033

DRIVE SIDE

1/2 LINK, #50H
0309034

GAS GREENS ROLLER ROLL-N-GO-EHA DWG #9

NOTES:

- LEFT REAR AS SHOWN
- PARTS #2 AND #15 ARE MIRRORED VERSIONS OF
- PARTS #1 AND #14 AND ARE LOCATED ON RIGHT REAR

ISSUED: 6-5-2015
CORRECTION
DATE 3-1-2023

S/N 3377 & HIGHER
0346070
0353011

NOTE: ITEM # 9, BUSHING REQUIRED PART # 0351213

NOTE: ITEM # 8, S/N 3377 & UP, S/N 3376 & BELOW USE 0251186

** KEY FOR #7 SPROCKET -
033112 (SQUARE 1/4" X 1")

*** KEY FOR #8 SPROCKET -
0331506 (1/4" WOODRUFF)

DRIVE SIDE

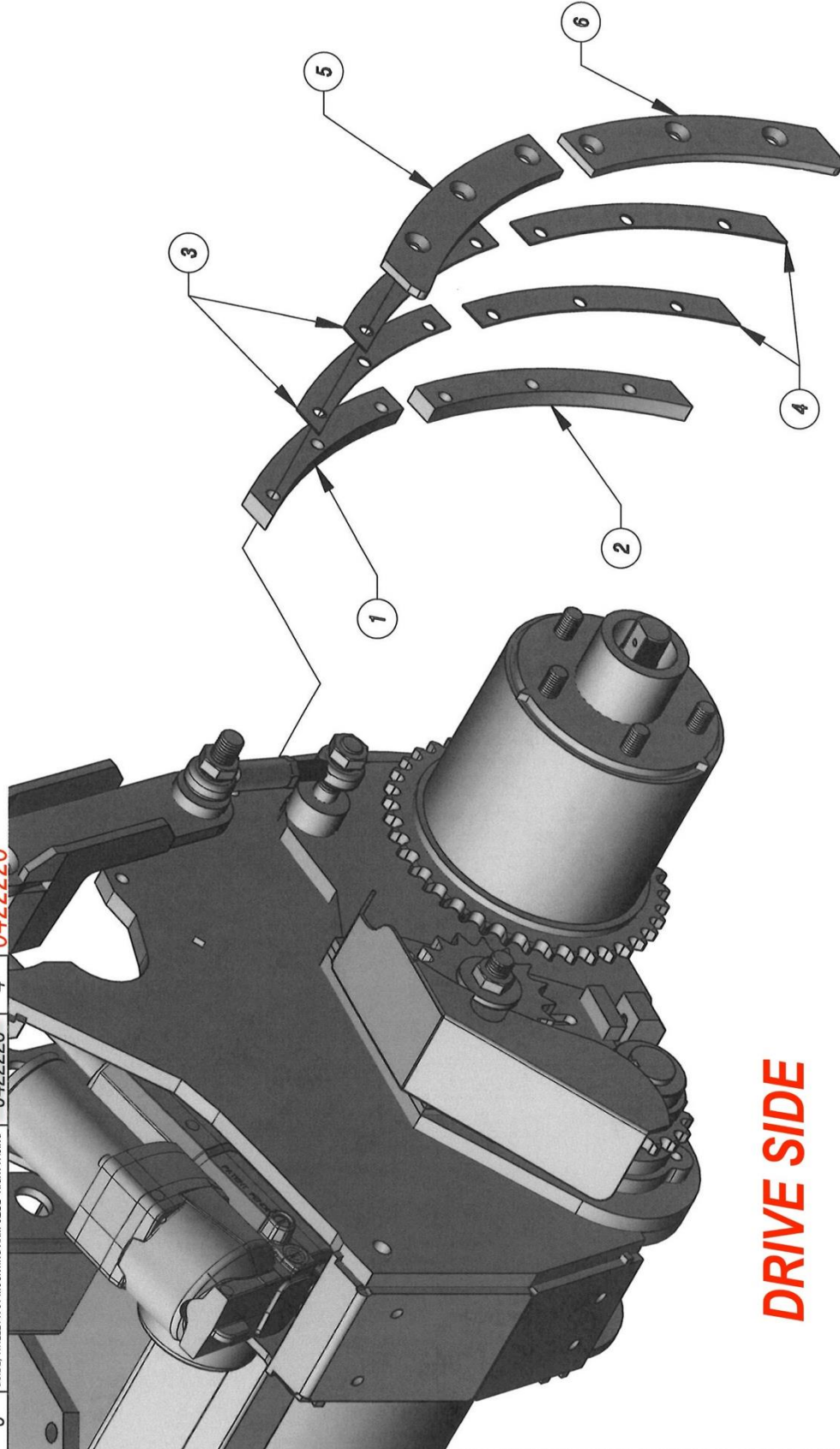
NOT SHOWN: 2-BOLT FLANGE BEARING ON SHAFT
PART # 0303083, QTY. 4

ITEM	DESCRIPTION	DWG NO	QTY	ITEM	DESCRIPTION	DWG NO	QTY
* 1	MOTOR, HYDRAULIC	0330139	2	9	SPROCKET- #50BTB32	0351212	2
2	COLLAR, SPLIT- 1 1/4" I.D.	0311020	2	10	HHCS- 1/4-20 x 1 1/2" LG.	0346004	2
3	SHAFT, IDLER- DRIVE SIDE	0448377	2	11	WASHER, LOCK- 1/4" B146 SPLIT	0353001	2
4	BEARING, 3-BOLT FLANGE	0303104	4				
5	ROLLER CHAIN- #50 165 PITCHES	0309095	2				
6	MASTER LINK- #50 CHAIN	0309000	2				
** 7	SPROCKET- #50BS20 x 1 1/4" BORE	0251227	2				
*** 8	SPROCKET- #50BS20 x 1" BORE	0251194	2				

ISSUED: 6-8-2015

CORRECTION DATE: 3-1-2023

ITEM	DESCRIPTION	DWG NO	QTY
1	SPACER, WHEEL PIVOT MOUNTING ARM- 1/2" UPPER	0449317	4
2	SPACER, WHEEL PIVOT MOUNTING ARM- 1/2" LOWER	0449319	4
3	SPACER, WHEEL PIVOT MOUNTING ARM- 203A, UPPER	0449316	8
4	SPACER, WHEEL PIVOT MOUNTING ARM- 203A, LOWER	0449318	8
5	GUIDE, WHEEL PIVOT MOUNTING ARM SLIDE- LEFT FACING	0422227	4
6	GUIDE, WHEEL PIVOT MOUNTING ARM SLIDE- RIGHT FACING	0422228 0422226	4



DRIVE SIDE

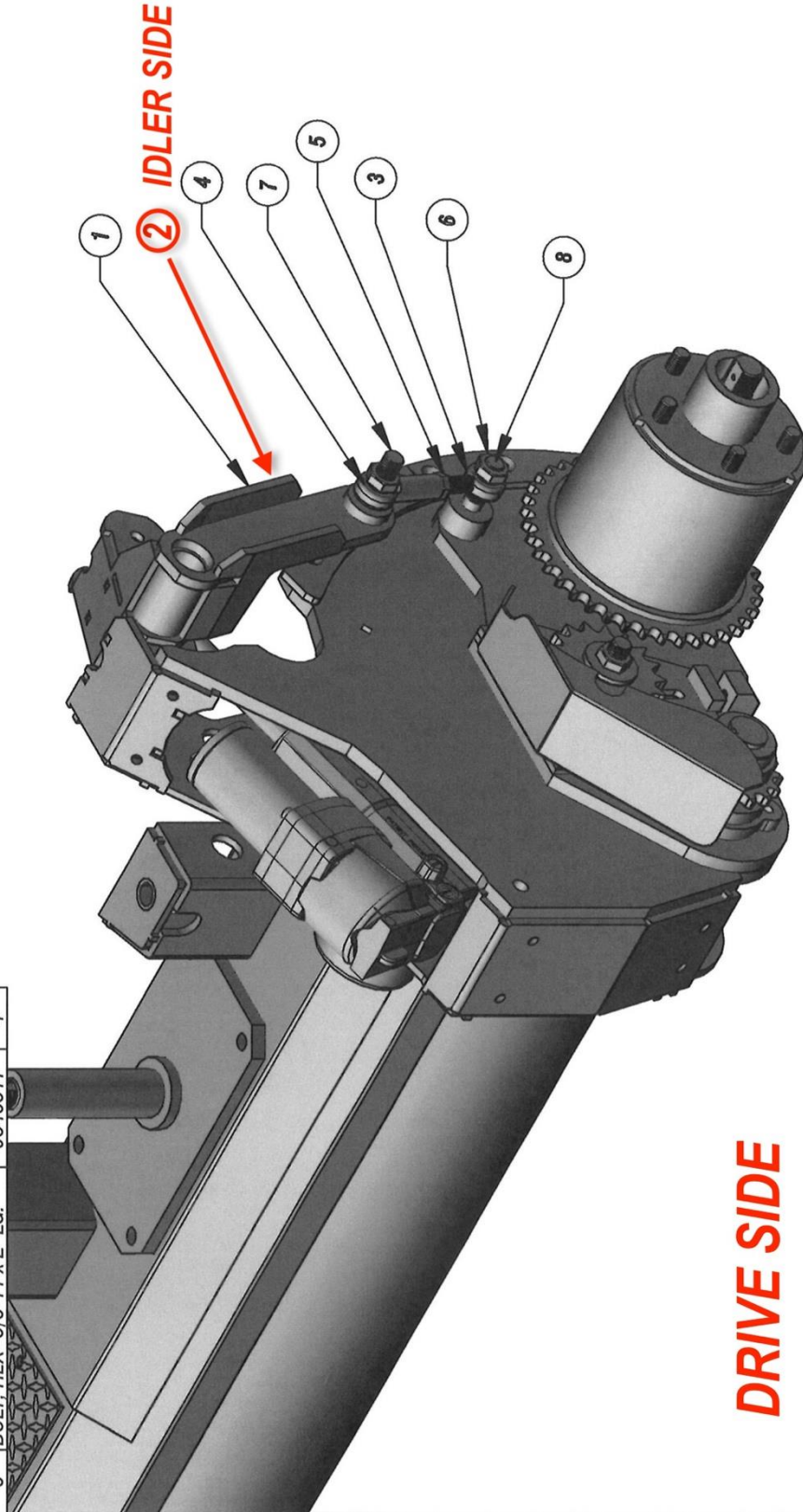
GAS GREENS ROLLER ROLL-N-GO-EHA DWG #11

ISSUED: 6-8-2015

CORRECTION DATE: 3-1-2023

ITEM	DESCRIPTION	DWG NO	QTY
1	LEVER, CYLINDER LIFT- RF & LR	0233308	2
2	LEVER, CYLINDER LIFT- LF & RR	0233307	2
3	BALL JOINT ROD END- 5/8-18 MALE	0303091	4
4	BALL JOINT ROD END- 5/8-18 FEMALE	0303093	4
5	NUT, HEX JAM- 5/8-18	0338061	4
6	NUT, HEX NYLOCK- THIN- 5/8-11	0338113	8
7	BOLT, HEX- 5/8-11 x 2 1/4" LG.	0346521	4
8	BOLT, HEX- 5/8-11 x 2" LG.	0346517	4

→ DRIVE SIDE
→ IDLER SIDE



NOTES:

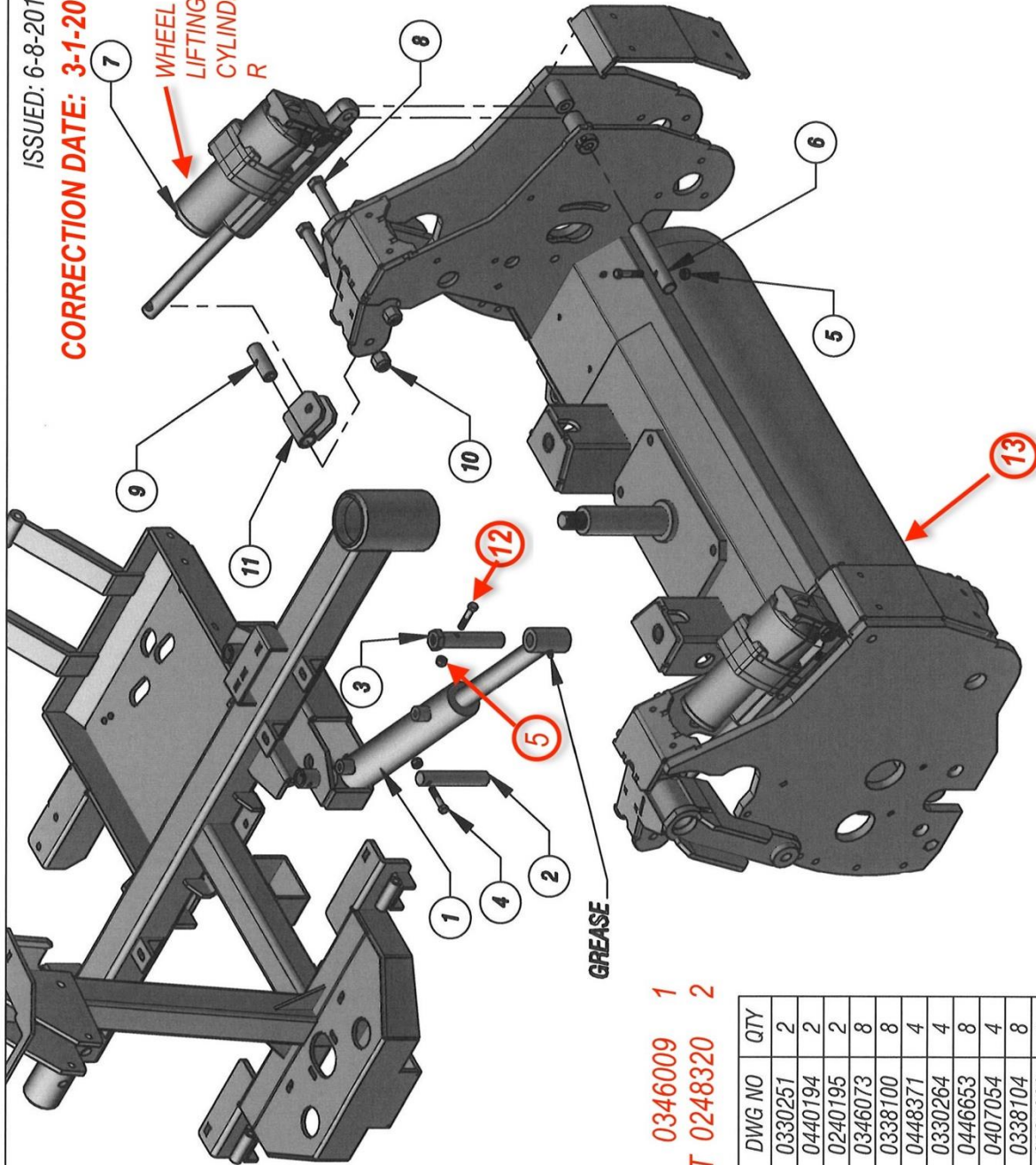
-LEFT REAR AS SHOWN

-PART #2 IS A MIRRORRED VERSION OF PART #1
AND IS LOCATED ON RIGHT REAR AND FRONT LEFT

GAS GREENS ROLLER ROLL-N-GO-EHA DWG #12

ISSUED: 6-8-2015

CORRECTION DATE: 3-1-2023



12 BOLT 0346009 1
13 ROLL REPLACEMENT 0248320 2

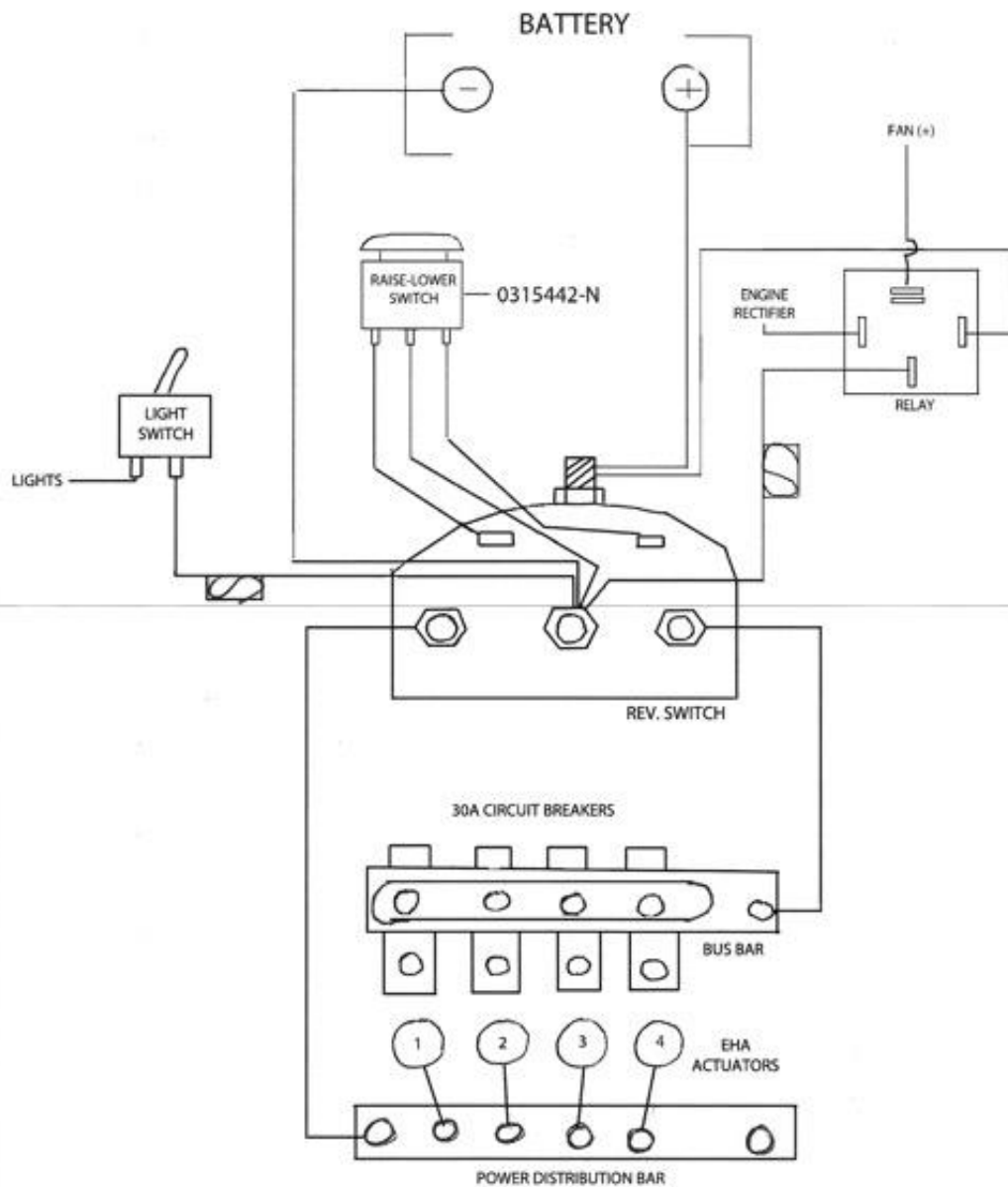
ITEM	DESCRIPTION	DWG NO	QTY
1	HYDRAULIC CYLINDER- STEERING	0330251	2
2	PIN, STEERING CYLINDER MOUNT	0440194	2
3	PIN, ROLL HOUSING STEERING CYLINDER MOUNT	0240195	2
4	HEX HEAD CAP SCREW- 1/4-20 x 1 1/2" LG.	0346073	8
5	NUT, HEX- 1/4-20	0338100	8
6	SHAFT, WHEEL LIFTING CYLINDER PIVOT- LOWER	0448371	4
7	HYDRAULIC CYLINDER- ELECTRIC ACTUATED	0330264	4
8	BOLT, CYLINDER LIFT LEVER	0446653	8
9	BUSHING- CYLINDER LIFT LEVER PIVOT	0407054	4
10	NUT, HEX- 1/2-13	0338104	8
11	LINK, UPPER CYLINDER CLEVIS	0234080	4

GAS GREENS ROLLER ROLL-N-GO-EHA DWG #13

ISSUED: 6-9-2015
CORRECTION DATE: 3-1-2023

ITEM	DESCRIPTION	DWG NO	QTY	ITEM	DESCRIPTION	DWG NO	QTY
1	MOUNT, BATTERY BOX & OIL FILTER	0276985	1	13	RELAY, 12 VOLT	0315409	1
2	FILTER HOUSING, HYDRAULIC OIL	0318039	1	14	SWITCH, TOGGLE	0315143	1
3	FILTER, ELEMENT	0318023	1	15	FUSE, IN LINE	0315168	1
4	BOX, BATTERY	0280074	1	16	HOLDER, FUSE	0315167	1
5	BOX, CONTROL	0280075	1	17	FLOOD LIGHT, LED- RECTANGULAR	0315413	2
6	BATTERY, 12 VOLT	0336008	1	18	BRACKET, FLOOD LIGHT MOUNTING	0488153	1
7	TERMINAL, EYELET- 6 GA.	0315297	4	19	HARNESS, WIRE	0315414	1
8	BATTERY CABLE, 6 GA. RED (BULK)	0315399	2	20	HEADLIGHT, 90° BULB	0315376	1
9	BATTERY CABLE, 6 GA. BLACK (BULK)	0315006	2	21	COVER, ENCLOSURE	0471467	1
10	COVER, BATTERY BOX	0450012	1	22	DC ELECTRIC FAN	0315370	1
11	BOOT, TOGGLE	0315145	1				
12	PLATE, ON / OFF	0315155	1				

SWITCH & CYLINDERS - WIRE DIAGRAM ROLL-N-GO, EHA

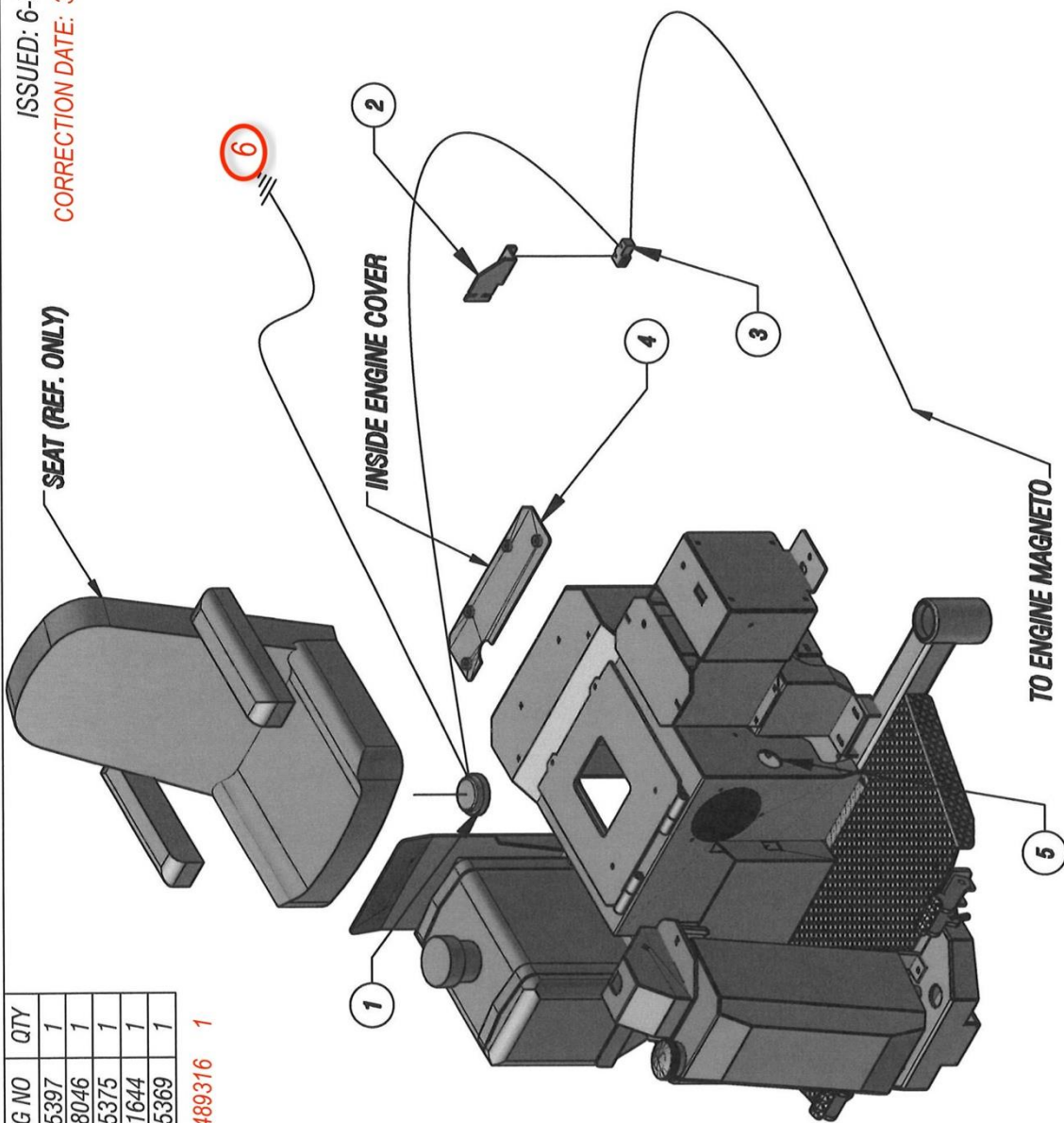


M.M. CONF.
6/2018

8/12/15

ITEM	DESCRIPTION	DWG NO	QTY
1	SWITCH, SEAT	0315397	1
2	BRACKET, NEUTRAL SWITCH MOUNTING	0488046	1
3	SWITCH, SNAP ACTION	0315375	1
4	GUARD, ENGINE HEAT SHIELD	0221644	1
5	METER, HOUR	0315369	1

6 PAD, SEAT PRESSURE SENSOR 0489316 1



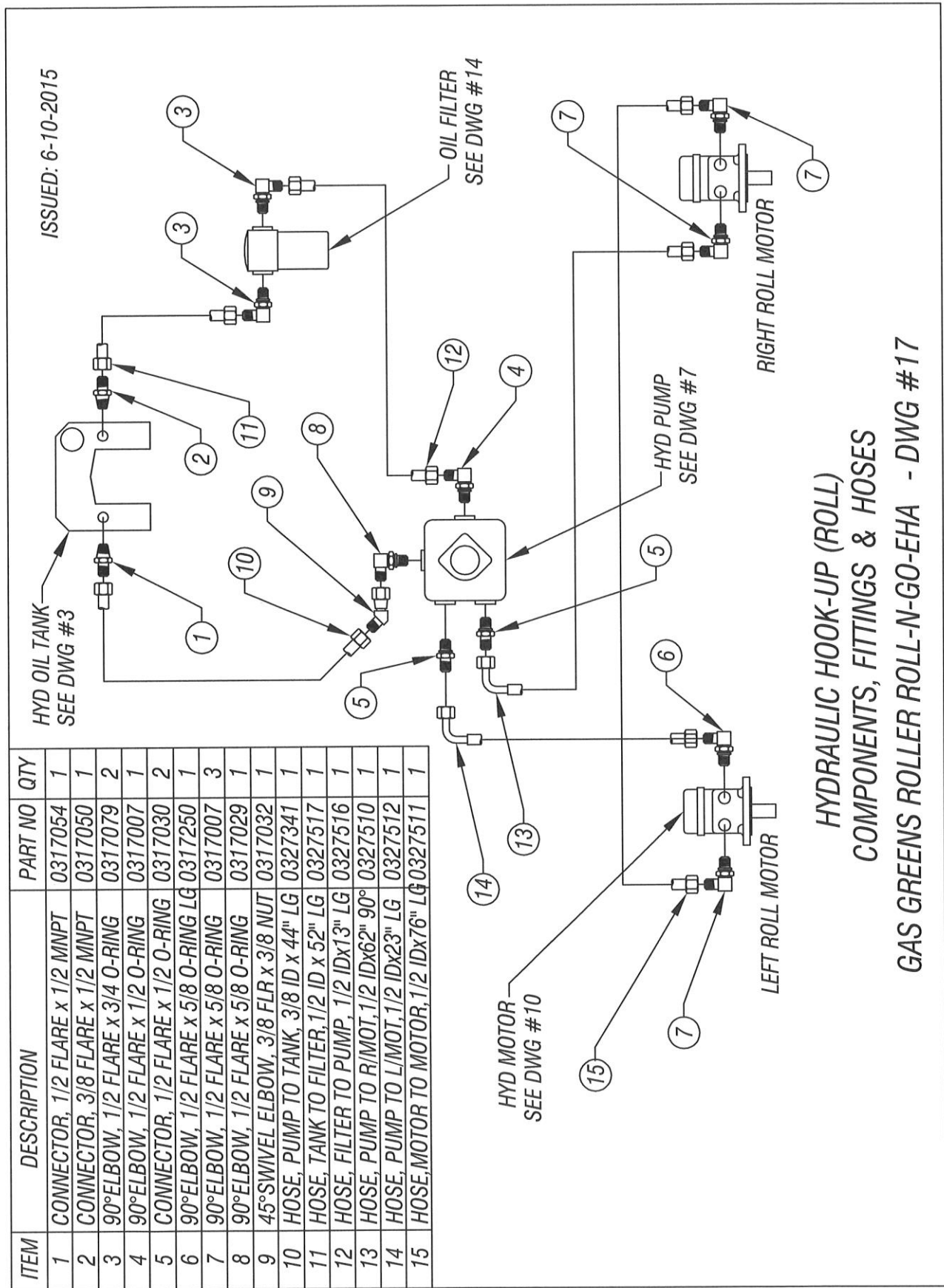
GAS GREENS ROLLER ROLL-N-GO-EHA DWG #15

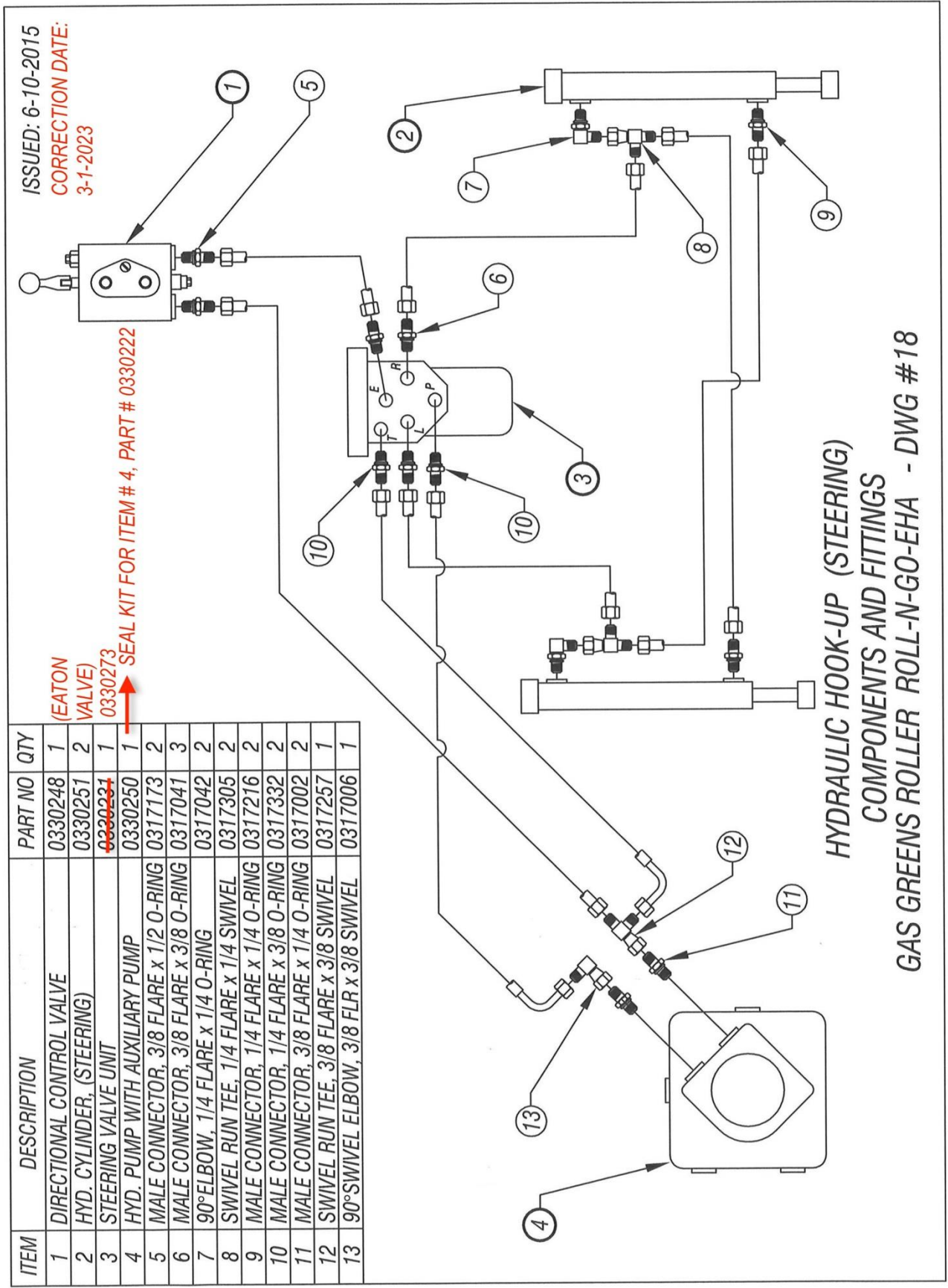
ISSUED: 6-10-2015

CORRECTION DATE: 3-1-2023

GAS GREENS ROLLER ROLL-N-GO-EHA DWG #16

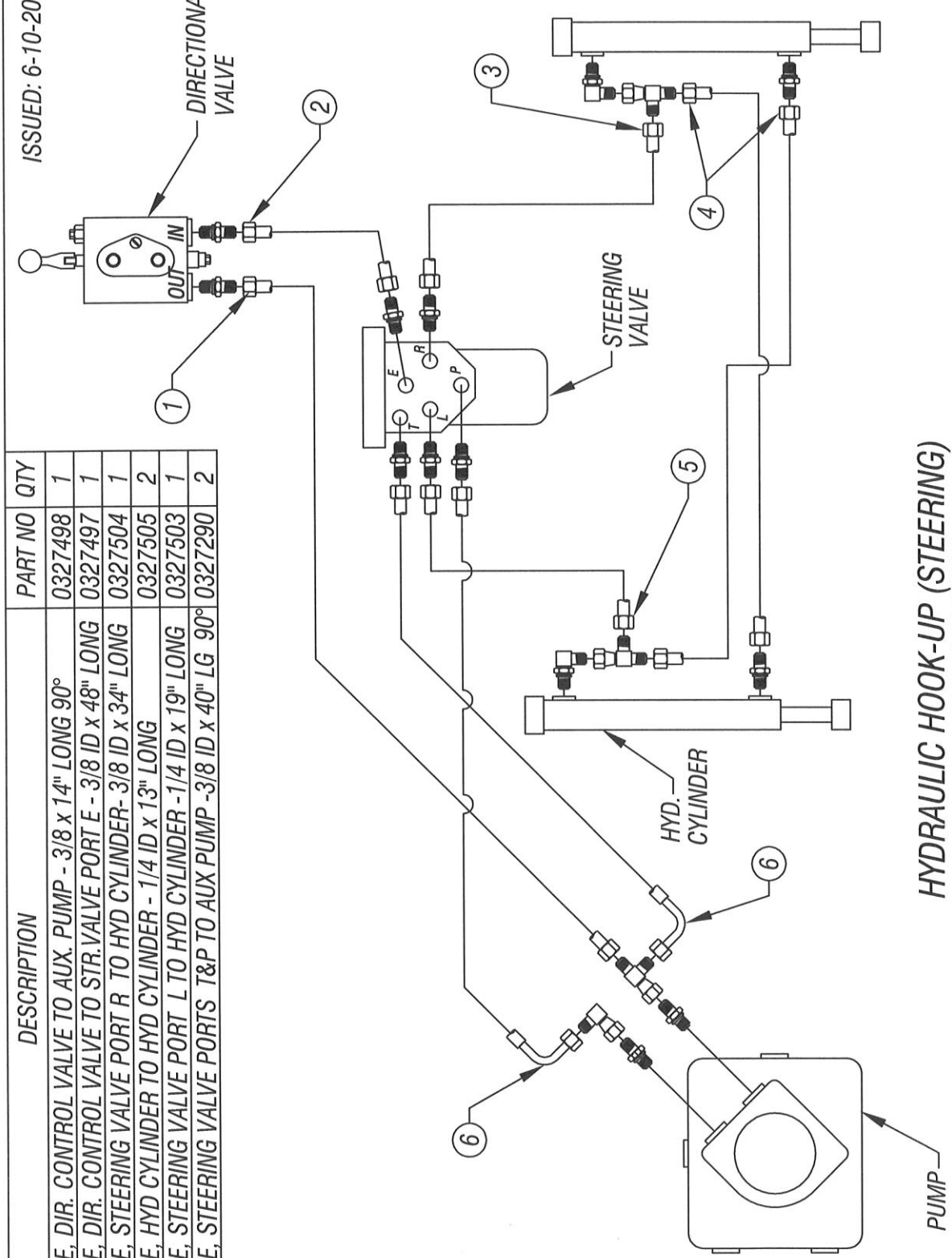
ITEM	DESCRIPTION	DWG NO	QTY
1	SCRAPER, ROLLER	0205169	2
2	SPRING, EXTENSION	0350033	4
3	HEX HEAD CAP SCREW- 5/16-18 x 1 1/2"	0346106	4
4	NUT, HEX NYLOCK- 5/16-18	0338101	4
5	NUT, HEX JAM- 5/16-18	0338051	4
6	HEX HEAD CAP SCREW- 3/8-16 x 1 1/4"	0346229	4
7	NUT, HEX- 3/8-16	0338003	4
8	BUSHING, BRONZE OILITE	0307055	2



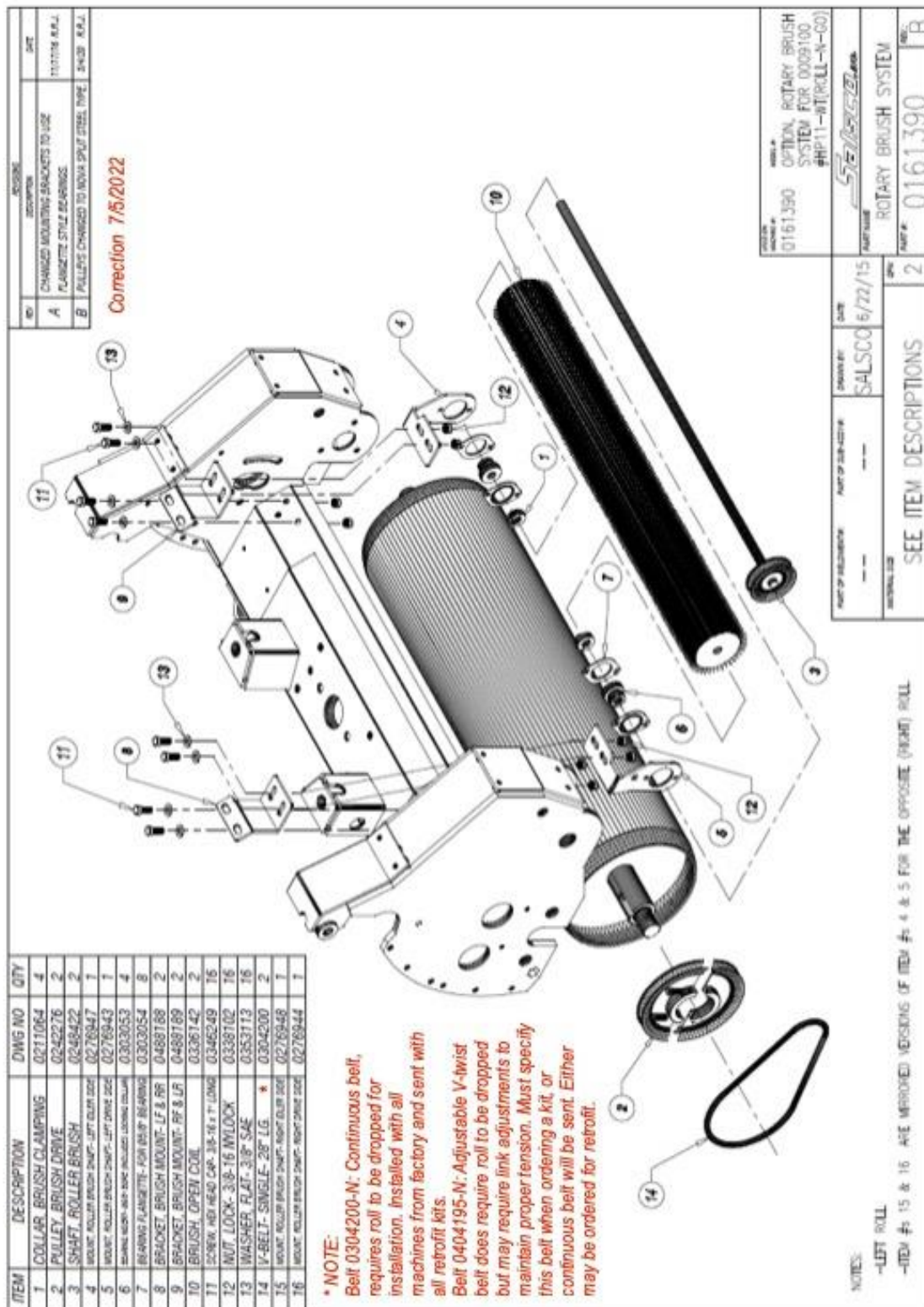


ISSUED: 6-10-2015

ITEM	DESCRIPTION	PART NO	QTY
1	HOSE, DIR. CONTROL VALVE TO AUX. PUMP - 3/8 x 14" LONG 90°	0327498	1
2	HOSE, DIR. CONTROL VALVE TO STR. VALVE PORT E - 3/8 ID x 48" LONG	0327497	1
3	HOSE, STEERING VALVE PORT R TO HYD CYLINDER- 3/8 ID x 34" LONG	0327504	1
4	HOSE, HYD CYLINDER TO HYD CYLINDER - 1/4 ID x 13" LONG	0327505	2
5	HOSE, STEERING VALVE PORT L TO HYD CYLINDER - 1/4 ID x 19" LONG	0327503	1
6	HOSE, STEERING VALVE PORTS T&P TO AUX PUMP - 3/8 ID x 40" LG 90°	0327290	2



HYDRAULIC HOOK-UP (STEERING)
HYDRAULIC HOSES
GAS GREENS ROLLER ROLL-N-GO-EHA - DWG #19

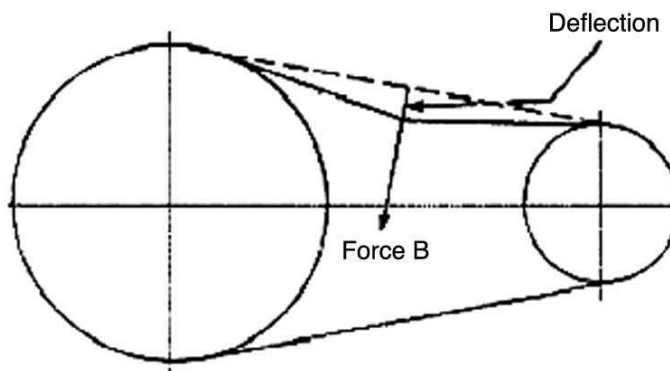


Below is a quick reference chart for various “Flat Head Cap Screws” and the torque recommendations.

VALUES ARE STATED IN FOOT POUNDS

BOLT SIZE	Thds Per Inch	SAE Grade 5	SAE Grade 8
1/4	20	10	14
	28	---	---
5/16	18	19	29
	24	---	---
3/8	16	33	47
	24	---	---
7/16	14	54	78
	20	---	---
1/2	13	78	119
	20	---	---
9/16	12	114	169
	18	---	---
5/8	11	154	230
	11	---	---
3/4	10	257	380
	10	---	---
7/8	9	382	600
	9	---	---
1	8	587	700
	8	---	---

Drive Belt Tension Measurement by Deflection



Deflection should be 3/8" when 8-12 lbs. push is applied at "B"

WARRANTY POLICY-GREENS ROLLERS

Please remember to complete and return your Warranty Card and Dealer Delivery Report. Warranty Claims will not be considered if your Warranty Card and Dealer Delivery Report has not been returned to Salsco.

Your Salsco Commercial or Turf Equipment product is a commercial type product and is normally manufactured and sold for commercial or industrial use. **Salsco will, for the original purchaser, for (5) years from the date of purchase (90 days if used for rental purposes) repair or replace, free of charge, any SALSCO part or parts manufactured by Salsco found to be defective in material, workmanship or both.** Any transportation or shipping charges will be borne by the purchaser. If, during the warranty period stated above, the product does not function properly due to defect, simply contact Salsco and follow the Warranty Procedures included in this manual.

This warranty **does not** include:

- Incidental or consequential damages and is exclusive of any implied warranties.
- Normal maintenance parts, including, but not limited to hoses, chains, belts, filters, lubricants, etc.
- Parts or components, which are covered under the original manufacturer warranty, including, but not limited to engines, pumps, and motors.

WARRANTY PROCEDURE

In order for Salsco to consider your warranty claims in a timely manner you must follow the simple procedures listed below:

MACHINE OR PART FAILURE

- Call our service department for helpful instruction on how to correct or repair the problem. Preventive maintenance will also be suggested.
- When ordering parts for Warranty issues, you MUST retain possession of the old parts in question until notified with respect to returning the parts to Salsco or other disposition.
- Warranty Claims MUST be filed within 30-days from completion of the work performed. Contact our office for an electronic warranty claim form.
- Fill in all information requested on warranty claim form, a copy of which is included in this manual, (date of purchase, company name, address, etc.). List all parts used. Make sure part numbers are correct. You can obtain these from your manual. (include good description of problem; i.e. "leaking from spool" rather than "leaking").
- It is our goal to consider and reach a disposition on each Warranty Claim within 30-days from the date that it is received. Therefore it is important that you respond promptly to any request for further information. Claims with no response to inquiries will be closed as **"denied for lack of response"** 90-days from the date of request.
- Email, Fax or Send Warranty Claim form to our Warranty Department. – **Warranty on parts most often requires return of the parts that were replaced.** DO NOT DISCARD OLD PARTS UNTIL YOU HAVE RECEIVED A DETERMINATION AS TO WHETHER THESE PARTS MUST BE RETURNED.
- Our Warranty Department will contact and instruct you on how to return the Parts to Salsco on an RA #. Returns MUST be made within 30-Days from issuance of RA #. **FREIGHT CHARGES ON RETURN OF PARTS IS THE RESPONSIBILITY OF THE CUSTOMER.** Normal pre-delivery adjustments are not covered under warranty. Labor Warranties are based on reasonable time allowances as determined by Salsco, Inc. **TRAVEL TIME IS NOT REIMBURSED UNDER THE WARRANTY POLICY.**
- Be sure to put the RA form inside the box that you are shipping back; also be sure to put on the outside of the box "Return of Goods" and the RA #.
- Ship returns via a traceable method such as UPS Ground Service. Be sure that the shipment is insured for the appropriate value. If uninsured parts are lost, we cannot issue a credit.

PLEASE NOTE: ***Warranty forms should be filled out completely.***

PREVENTIVE MAINTENANCE IS YOUR BEST INSURANCE AGAINST EQUIPMENT FAILURE. BE SURE TO READ THE MANUAL, ESPECIALLY THE MAINTENANCE, OPERATING AND CAUTION SECTIONS.

*warranty policies, forms and procedures are subject to change without notice

Revision Date 10/12/12

SALSCO WARRANTY CLAIM FORM

SALSCO, INC. 105 SCHOOLHOUSE RD. CHESHIRE, CT 06410		PHONE: 203-271-1682, 800-872-5726 FAX: 203-271-2596 EMAIL: a.fowler@salsco.com WEB: www.salsco.com	
END OWNER		PHONE:	
NAME:		FAX:	
EMAIL:			
ADDRESS:			
PURCHASED FROM:		PHONE:	
NAME:		FAX:	
EMAIL:			
ADDRESS:			
EQUIP/WARRANTY INFO: (MUST BE COMPLETE)			
PURCHASE DATE:		INV #:	DATE FAILED:
MODEL #:		SERIAL #	REPAIR DATE:
HRS USED:			
WARRANTY CLAIM/WORK ORDER #			
WAS A SALSCO RETURN AUTH. # ISSUED FOR REPAIRS OR RETURN OF PARTS: YES NO			
IF YES, RA #:			
PROBABLE CAUSE OF FAILURE:			

SALSCO WARRANTY CLAIM FORM - Continued

WORK PERFORMED/COMMENTS ON REPAIR:				
SHOP LABOR RATE:				
SUBMITTED BY:				
TOTAL LABOR HRS TO REPAIR:				
PRINTED NAME:				
SALSCO PART #:	QTY	PRICE EACH	TOTAL	INVOICE #:
DESCRIPTION:				
FILL IN ALL INFORMATION REQUESTED ON WARRANTY CLAIM FORM. INCOMPLETE FORMS CANNOT BE PROCESSED & WILL BE RETURNED. LIST ALL PARTS USED. MAKE SURE PART NUMBERS ARE CORRECT. ANY PARTS THAT YOU BELIEVE TO BE DEFECTIVE OR ANY PARTS THAT BREAK SHOULD BE RETAINED FOR POSSIBLE INSPECTION UNTIL AFTER THE WARRANTY HAS BEEN PAID OR PART HAS BEEN RETURNED. INV. # NEEDS TO BE INCLUDED ON WARRANTY CLAIM.				
OFFICE USE ONLY				
DATE REC'D:	DLR. DEL REPORT ON FILE: YES NO			
CUST ID:	WARRANTY CLAIM ON FILE: YES NO			
SALSCO WC:	PARTS TOTAL:			
SALSCO RA:	LABOR TOTAL:			
DATE APPROVED:	TOTAL APPROVED:			
DATE REJECTED:	REJECTED DATE:			
PROCESSED BY:	REASON:			

Salsco, Inc. 105 School House Rd. Cheshire, CT 06410 203-271-1682		sales@salsco.com www.salsco.com
DEALER DELIVERY REPORT		
MODEL _____		SERIAL NO _____
DEALER _____	CITY _____	STATE _____ ZIP _____
PURCHASER (Last Name or Company) _____ (First Name) _____ (Middle Name) _____	ADDRESS _____	CITY _____ STATE _____ ZIP _____
The undersigned dealer warrants that the above-described machine was carefully inspected, adjusted and prepared for delivery before delivery to the purchaser; that both the operation and maintenance of the machine were explained to the purchaser; and that a copy of the Owner's Instruction Manual were given to the purchaser and his attention called to Our Warranty and any operating instructions included in the manual and caution notes.		The undersigned purchaser certifies that the operation and maintenance of the above-described machine have been explained to him; acknowledges receipt of a copy of the Owners's Instruction Manual and Our Warranty Policy printed in said Instruction Manual and Caution Notes. I also understand that it is my responsibility to explain and make Salsco manuals available to new operators.
Date _____ Dealer _____ Sign By _____ Phone _____		Date _____ Purchaser _____ Sign By _____ Phone _____

SERIAL # _____	MODEL NO. _____
SALSCO LIMITED WARRANTY CARD	
1. DATE PURCHASED: _____	
2. PURCHASER: _____	
3. PURCHASER ADDRESS: _____	
Email: _____	
4. DEALER: _____	
5. DEALER ADDRESS: _____	
6. WILL THIS EQUIPMENT BE USED COMMERCIALY? <input type="checkbox"/> YES <input type="checkbox"/> NO	
7. DID DEALER SERVICE THIS EQUIPMENT AND INSTRUCT YOU IN ITS CARE AND SAFE OPERATION? <input type="checkbox"/> YES <input type="checkbox"/> NO	
8. DID YOU RECEIVE AN "OPERATION & SERVICE MANUAL" AND SAFETY PAMPHLET? <input type="checkbox"/> YES <input type="checkbox"/> NO	
NOTICE IMPORTANT: THIS CARD MUST BE FILLED OUT COMPLETELY AND MAILED TO THE FACTORY WITHIN 10 DAYS OF PURCHASE DATE, OR YOUR LIMITED WARRANTY WILL BE VOIDED.	
SIGNED _____ Purchaser	

GAS GREENS ROLLER SERVICE INTERVAL SCHEDULE

After ____ hours / Daily / Weekly / Yearly / See vendor manual

ENGINE - Check Honda service manual for recommended service intervals.

	H	D	W	Y	MANUAL
Check oil level		X			
Change oil	500				
Change oil filter	500				
Change fuel filter	500				
Check all for leaks		X			

HYDRAULIC SYSTEM

	H	D	W	Y	MANUAL
Grease hydraulic cylinders, pins, etc. where applicable			X		
Check for leaks (all hoses and fittings at both hose ends)		X			
Check hydraulic oil level ... <i>only if you see leaks</i>					
Change hydraulic oil First 500	1000				
Change hydraulic oil filter First 500	1000				
Inspect hoses for chafing, cracks, etc. and assure nothing impedes		X			

ADJUSTMENTS & DRIVES

	H	D	W	Y	MANUAL
Check all nuts, bolts, other fasteners for tightness			X		
Check chains for proper lubrication, wear, and tension			X		
Check belts for proper wear and tension (is belt dressing recommended?)			X		
Grease bearings, cylinders, steering shaft (is this a sealed bearing?)			X		

TRAILER

	H	D	W	Y	MANUAL
Check tire pressure (recommended pressure)			X		
Inspect tires for dry rot, tread wear, damage, etc.		X			
Grease axle and wheel hubs				X	

RECOMMENDED OIL - Fill within 6" of the top to avoid overflow when it gets hot.

Models 09065 / 09067	AW68 Hydraulic Oil
HP11	AW68 Hydraulic Oil
HP5.5	AW68 Hydraulic Oil
HP11-III	15-50 Motor Oil
Roll-n-Go, EHA	15-50 Motor Oil
Tranz-Former, EHA 5-G	10-40 Motor Oil

SERVICE RECORD

If kept properly, this schedule will help track problems in the future.

[illegible]

MODEL # _____ S/N _____

DATE PURCHASED: _____