

**Quality of Workmanship
Innovative Design
Built to Last!**

Salsco, INC.
LEADER BY DESIGN



**MADE IN
THE U.S.A.**

HP11 ROLLER - 09071 Operators And Parts Manual



MANUFACTURER OF OUTDOOR POWER EQUIPMENT

Products for Turf & Lawncare, Rental, Construction, Tree Care, Wood Processing, Nursery & Farm Industries

3-1/2" - 18" Capacity, Gas, Diesel, & PTO Wood/Brush Chippers - Slab Chippers
Gas, Electric & Tow Behind Rollers - Tranz-Former Roller - CRV Core Recovery Vehicle
Mini-Paver - Mini-Track Paver - Cobra Curbers - Scorpion Router - Concrete Paver
Chipper Shredder Vacuums - Tailgate & Truckloader Vacuums
9 cu. yds. - 50 cu. yds. Per Hour, Electric, PTO & Diesel Powered Shaving Mills

Salsco, INC.
LEADER BY DESIGN

105 Schoolhouse Road
Cheshire, CT 06410 U.S.A.
800-872-5726 (Toll Free), 203-271-1682, 203-271-2596 (Fax)
www.salsco.com, sales@salsco.com

TABLE OF CONTENTS

MODEL HP11, GAS GREENS ROLLER

COVER & TABLE OF CONTENTS.....	Pages 1–2
STATEMENT OF FACT.....	Page 3
SPECIFICATIONS & FEATURES.....	Page 4
MACHINE REGISTRATION.....	Page 5
SAFETY & OPERATING INSTRUCTIONS.....	Page 6
SERVICE & MAINTENANCE INSTRUCTIONS.....	Page 7
PARTS DIAGRAMS.....	Pages 8–26
CROSS CONTAMINATION PREVENTION KIT OPTION.....	Pages 23-24
WIRING DIAGRAM.....	Page 26
TORQUE CHART.....	Page 27
WARRANTY POLICY/PROCEDURE.....	Page 28
WARRANTY CLAIM FORM.....	Pages 29-30
DEALER DELIVERY REPORT & WARRANTY CARD.....	Page 31
SERVICE INTERVAL SCHEDULE.....	Page 32
SERVICE SCHEDULE LOG.....	Page 33

SALSCO, INC.
105 Schoolhouse Road
Cheshire, CT 06410
800-873-5726, 203-271-1682
203-271-2596 (Fax)
www.salsco.com, sales@salsco.com

STATEMENT OF FACT

You have just purchased the highest quality, most maneuverable, dependable, **GREENS ROLLER** on the market today. This unit has the ability to meet exact standards and perform for years with minimum downtime. HOWEVER, it cannot read nor will it understand this manual no matter how long you leave it on top of the machine.

It is your responsibility to read and understand this manual; it is also your responsibility to be certain this information is passed along to anyone who is expected to operate this equipment. Should you choose not to read, understand and pass along the information provided you, please expect equipment failure and possible injuries to persons around this equipment.

For the safety of the operator, it is **imperative** that this manual is carefully read and understood.

Once you have read this manual, it is your responsibility to be sure that all new operators read and understand this manual, especially all cautions stated.

As a manufacturer of equipment, we have a responsibility to design a safe piece of equipment. NOTE: The important safeguards and instructions in this manual are not meant to cover all possible conditions and situations that may occur. It must be understood that common sense, caution, and care are factors, which cannot be built into any product. These factors must be supplied by the person(s) caring for and operating this equipment.

ONLY YOU CAN PREVENT ACCIDENTS!!

SPECIFICATIONS AND FEATURES

GAS GREENS ROLLER – MODEL HP11

The Salsco Greens Roller is actually a multi-purpose tool, which, in a short time, has become a must-have for many golf courses. Our unit can be used on GREENS, WET OR DRY, and will increase speed an average of 1-2 feet. However, that's only part of the story. We can ROLL SOD, CLAY TENNIS COURTS, CART PATHS, SUB BASE FOR NEW GREENS CONSTRUCTION, WET GREENS, WET SPOTS ON FAIRWAYS, etc., etc. Because of traction and maneuverability this machine is ready and able when you are.

Drive System

A 13HP Honda Engine, electric start, powers this unit. Power is delivered to a Hydrostatic Pump through a love-joy coupling. Fluid power is then transmitted through 2,500 P.S.I. (10,000-lb. burst) hoses to drive motors. Drive motors change fluid power to mechanical power and transmit it through #50 chain to the rolls. We drive both 10-3/4" diameter rolls. This gives us the best traction in the roller business. Compaction is not an issue at 5.4 P.S.I. (a 200 lb. person = 12.5 P.S.I.)

Compaction is Never a Problem

5.4 P.S.I. puts compaction at the lowest possible level. We want to smooth out the surface, not change it or compact it. Both rollers can be filled with water which will add approximately 128 lbs. and 1.4 P.S.I. to the already 5.4 P.S.I. = 6.8 P.S.I. for rolling out frost heaves, tees or after verti-draining.

The Salsco Roller is very user friendly, with automotive type steering and smooth pedal controls. Operators spend very little time getting comfortable with this machine, usually before the first green is done.

The Salsco Greens Roller comes standard with its own trailer. When not in use with the Greens Roller, it can be used for many other tasks. An example would be for transporting greens mowers from green to green.

03/2011

MACHINE REGISTRATION

MANUFACTURED BY: SALSCO, INC.
105 Schoolhouse Rd., Cheshire, CT 06410
800-872-5726, 203-271-1682, 203-271-2596 (Fax)
sales@salsco.com www.salsco.com

THIS MANUAL COVERS MODEL (s): MODEL HP11 - GAS GREENS ROLLER

This company reserves the right to discontinue, add improvements to, or change the design of any model or product at any time without obligation to improve existing machines, either by changing the design or adding new parts.

It has been and will continue to be the policy of SALSCO to update existing machines at its own discretion. Whenever possible, new designs will be made in such a way that they can be "Retro Fit" if so desired.

Record in the space provided below the model and serial number of this unit. Please retain these numbers for future reference.

No parts orders will be accepted **WITHOUT MODEL NUMBERS OR PART NUMBERS**. All part numbers are listed in this manual.

Serial Number _____ Model Number _____

NOTE: Be sure to complete your warranty card. This will insure immediate processing of any warranty claims.

READ AND UNDERSTAND THIS MANUAL BEFORE STARTING MACHINE

03/2011

SAFETY INSTRUCTIONS

1. **NEVER** leave unit running while unattended.
2. **NEVER** park on a green for any reason.
3. **NEVER** go down steep hills sideways. **ALWAYS** approach hills straight on.
4. **NEVER** change your mind mid-way down a steep incline. Once you've started down a steep incline, change direction only with the greatest of care and gentlest touch.
5. Allow engine to cool for several minutes before filling with fuel, since fuel tank is over the engine.

NOTE: HONDA ENGINES - ALWAYS TURN OFF THE FUEL SHUTOFF, WHEN THE ENGINE IS NOT RUNNING, i.e. WHEN IN TRANSPORT, STORAGE, ETC.

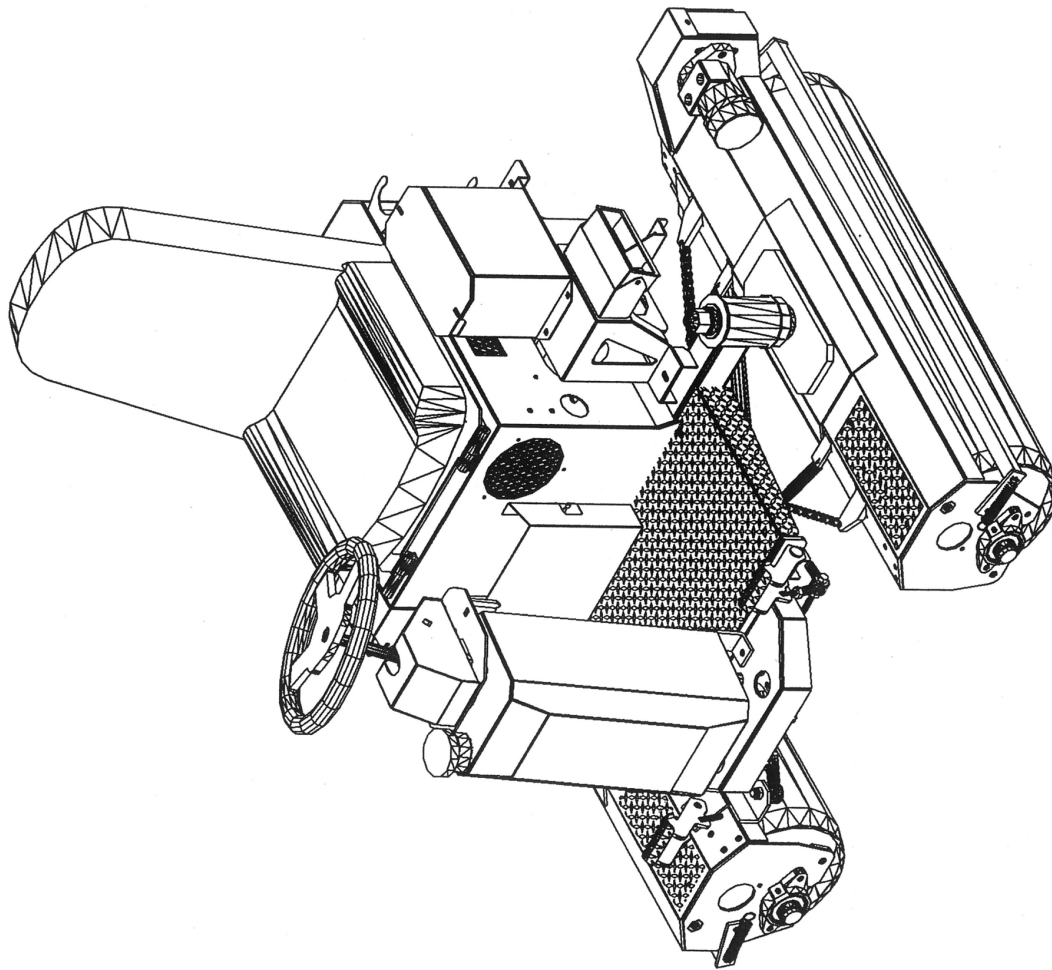
OPERATING INSTRUCTIONS

1. Check that the unit has been serviced and all fluids are checked and topped off.
2. Check all hydraulic hose fittings.
3. Push fuel shut off switch to on position.
4. Push choke to full on position
5. Push throttle to just above idle.
6. Turn on/off switch to on position.
7. You should start engine from seat position. Just reach down to engine controls. Keep feet off pedals. Hydrostatic drive should come to neutral when engine starts.
8. Pull rope and engine will come to life. Hydrostatic transmission should come to neutral when engine is started. **REMEMBER: RIGHT PEDAL TO GO RIGHT, LEFT PEDAL TO GO LEFT.**
9. Slide choke to full off position.
10. Once unit is running at just above idle, push pedal down slowly. Unit will begin to move. Drive it out of trailer on to grass area.
11. Since the unit is hydrostatic, engine should run at full R.P.M. and speed should be controlled by pressure on the pedal.

SERVICE & MAINTENANCE INSTRUCTIONS

1. Check all hydraulic hoses **DAILY, or before each scheduled use**, for wear and any signs of chaffing. **REMINDER:** Drive motor hoses should be treated as wear items and should be replaced on a yearly basis.
2. Check all fittings for any signs of leaking **DAILY, or before each scheduled use**.
3. Check all grease fittings as listed below on a **WEEKLY** basis, and grease as necessary. (Add grease till grease leaks slightly from fitting.)
 - ◆ Bearings on roll housings - Quantity 4
 - ◆ Pivot bearing on main housing - Quantity 2
 - ◆ U-Joint on steering shaft - Quantity 1
4. Check engine to manufacturers specifications and maintenance. **THIS ENGINE HAS AN OIL SHUT OFF SWITCH. CHECK OIL LEVEL FREQUENTLY AS THE UNIT WILL STALL ON INCLINES IF OIL LEVEL IS LOW.**
5. Fill hydraulic tank to 4-6" below filler cap. Be sure to tighten cap till cap seals.
6. After approximately **1 WEEK** of use, **and then every 2 WEEKS thereafter**, check drive chains - one on each side on roller drive motor. Pivot motor to tighten chain. **NOTE:** Check and adjust the tension of both drive motor chains on a regular basis. If chains are not tight, this could cause severe sprocket wear and possible breakage.
7. After approximately **1 WEEK** of use, **and then every 2 WEEKS thereafter**, check chains on steering. Adjust as needed.
8. Pivot for articulating steering should be tight, **with no play**, much the same as wheel bearings on cars.
9. **Keep unit clean.** Should rust form on rolls, simply drive the unit on a rough area till rolls are clean.
10. **Oil & Filter Type** - It has been determined that your Salsco machine will perform better by using a 25 micron filter. Salsco recommends using Mobil DTE 26 or Citgo HYD 68, non-detergent hydraulic oil, or their equivalents. The oil should have a viscosity rating of at least 100 SSU. While this is not a necessity, it will improve the overall performance of your machine. Salsco is now using this filter and hydraulic oil on all our machines using hydraulics.

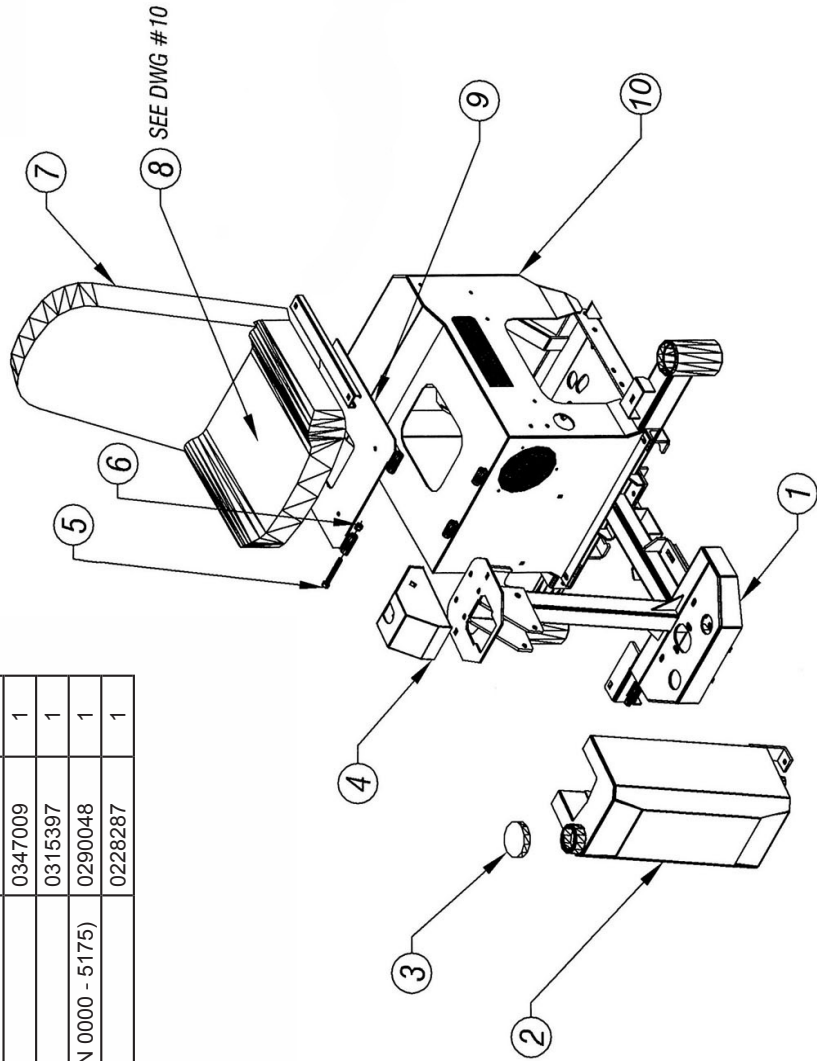
SAFETY IS A PRIME CONCERN AT SALSCO AND THE SAFETY DECALS ON YOUR MACHINE ARE A HIGHLY VISIBLE AND CONSTANT REMINDER TO ALL OPERATORS. REPLACEMENT SAFETY DECALS MAY BE OBTAINED BY CALLING SALSCO @ 1-800-872-5726, OR THE DEALER IN YOUR AREA.



GAS GREENS ROLLER HP 11 - DWG #1

ITEM	DESCRIPTION	PART NO.	QTY.
1	FRAME, BASE	0219488	1
2	HYDRAULIC TANK	0252108	1
3	HYDRAULIC TANK CAP WITH DIPSTICK	0371061	1
4	BOX, TILT STEERING	0280064	1
5	HEX CAP SCREW (3/8-16 X 4-3/4" LONG)	0346628	2
6	NYLON LOCK NUT (3/8-16)	0338102	2
7	SEAT	0347009	1
8	SEAT SWITCH (ENGINE KILL)	0315397	1
9	MOUNTING PLATE (Required for S/N 0000 - 5175)	0290048	1
10	HOUSING, ENGINE	0228287	1

ISSUED:	02-24-2011
	10-25-2013
	09-18-2020
	06-01-2023



GAS GREENS ROLLER HP 11 - DWG #2

ITEM	DESCRIPTION	PART NO.	QTY.	ITEM	DESCRIPTION	PART NO.	QTY.
1	FRAME	0219488	1	13	MASTER LINK #50	0309008	2
2	HOUSING, LEFT ROLL W/PIN	SEE NOTES	1	14	SPROCKET, ROLL DRIVE MOTOR	0251194	2
3	HOUSING, RIGHT ROLL W/PIN	SEE NOTES	1	15	GUARD, ROLL DRIVE CHAIN - LT	0421620	1
4	HOUSING, OSCILLATOR	0228164	1	16	SPACER, HYDRAULIC MOTOR	0449050	4
5	PLUG, 3/4 NPT	0317072	2	17	MOTOR, HYDRAULIC (ROLL DRIVE)	0330139	2
6	SHAFT/ROLL (1-1/4" SHAFT)	0248320	2	18	CONE BEARING	0303089	4
7	GUARD, ROLL DRIVE CHAIN - RT	0421645	1	19	WASHER, FLAT 1-9/16" X 3-1/2" X 1/8"	0453117	4
8	SPROCKET, ROLL 32 TOOTH - S/N 3377 & UP (1-1/4" SHAFT)	0351212	2	20	JAM NUT 7/8"-14	0338060	2
	SPROCKET, ROLL S/N 0000-3376 (1" SHAFT)	0251203	2	21	CAP, LUG NUT	0338405	2
9	BUSHING, TAPER LOCK	0351213	2	22	WASHER, FLAT 3/4" USS GR 8	0353106	2
10	SPACER, 2-BOLT BEARING FLANGE	0449310	4	23	O-RING, 3" ID X 3-3/8" X 3/16"	0343003	4
11	BEARING, 2-BOLT FLANGE	0303083	4	24	BEARING CUP	0303090	4
12	CHAIN, ROLL DRIVE #50, 55 PITCH	0309027	2				

NOTES:

ITEM #2 - HOUSING, LEFT ROLL

- USE PART# 0228289 ON UNITS BUILT BEFORE 3/30/2014
- USE PART# 0228330 ON UNITS BUILT AFTER 3/20/2014 UP TO S/N 7562
- USE PART# 0228375 ON UNITS WITH S/N 7562 AND UP

ITEM #3 - HOUSING, RIGHT ROLL

- USE PART# 0228268 ON UNITS BUILT BEFORE 3/30/2014
- USE PART# 0228329 ON UNITS BUILT AFTER 3/30/2014 UP TO S/N 7562
- USE PART# 0228378 O UNITS WITH S/N 7562 AND UP

ITEM #17 - HARDWARE TO MOUNT MOTOR

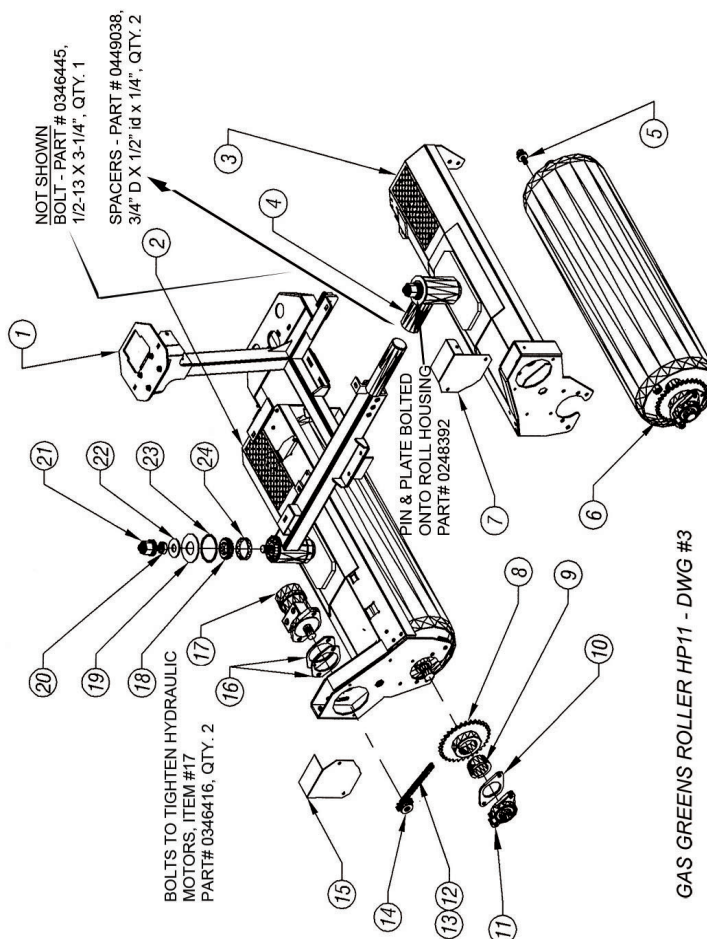
- BOLT, PART# 0346436, 1/2"-13 X 2", QTY. 2
- SAE 1/2" FLAT WASHER, PART# 0353115, QTY. 2
- NYLON NUT 1/2"-13, PART# 0338104, QTY. 2

ITEM #15 - HARDWARE TO MOUNT GUARD

- HEX CAP SCREW, 1/4-20 X 3/4", PART# 0346070, QTY. 2
- LOCK WASHER, 1/4", PART# 0353011, QTY. 2
- SAE 1/4" FLAT WASHER, PART # 0353121, QTY. 2

ITEMS #7 AND #15 ARE ONLY USED ON ROLLERS WITHOUT THE OPTIONAL INNER SPIKE-AIR KIT, PART# 0161333

ISSUED:	02-21-2014
	02-07-2012
	05-03-2012
	01-11-2013
	09-18-2020
	06-01-2023



GAS GREENS ROLLER HP11 - DWG #3

ITEM	DESCRIPTION	PART NO.	QTY.
1	SHAFT/ROLL, 1-1/4"	0248320	2
2	HOUSING, ROLL-LEFT	SEE NOTES	1
3	ROD END (5/8-18)	0303087	2
4	TIE ROD (5/8-18)	0245190	2
5	JAM NUT, (5/8-18)	0338061	2
6	NYLON LOCK NUT (5/8-18)	0338110	2
7	ROLLER CHAIN, #50, 61 PITCH (CROSSOVER CHAIN)	0309087	1
8	MASTER LINK #50	0309008	4
9	HALF LINK #50	0309022	1
10	BRACKET, STEERING SPROCKET	0288042	1
11	HOUSING, ROLL-RIGHT	SEE NOTES	1
12	CARRIAGE BOLT, 1/2"-13 X 6"	0346469	1
13	TUBE, HANDLE LEVER LOCKING	0467576	1
14	DOM TUBE-1" OD X 1/4" WALL X 2-1/2" LONG	STOCK	1
15	STEERING WHEEL	0354142	1
16	CAP, STEERING WHEEL	0354143	1
17	DOM TUBE-1" OD X 1/4" WALL X 1/2" LONG	STOCK	1
18	DOM TUBE-1" OD X 1/4" WALL X 1-1/4" LONG	STOCK	1
19	WASHER, FLAT - UHMW	0353333	2
20	EASY GRIP HANDLE - (1/2 -13)	0323142	1
21	ARM, TILT WHEEL STEERING PIVOT	0165121	1
22	SHAFT, MAIN FRAME STEERING	0248404	1
23	BOX, STEERING REDUCTION	0280065	1
24	ROLLER CHAIN, #40, 77 PITCH "STEERING CHAIN, 1 of 2"	0309088 SEE NOTES	1
25	MASTER LINK #40	0309006	1
26	HALF LINK, #40	0309019	1
27	SPROCKET & SHAFT	0251060	1
28	BEARING INSERT - 3/4" ID	0303023	2
29	FLANGETTE PILLOW BLOCK	0303024	2
30	EXTENSION SPRING	0350009	2
31	KEY -3/16 X 3/16 X 7/8 LONG	0431003	1

NOTES:

ITEM #2 - HOUSING, LEFT ROLL

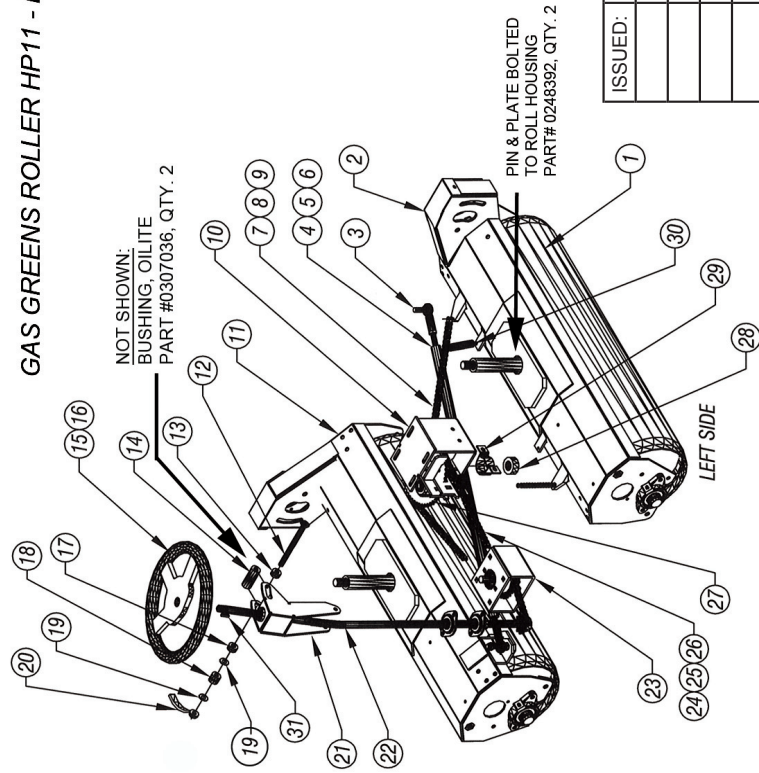
- USE PART# 0228289 ON UNITS BUILT BEFORE 3/30/2014
- USE PART# 0228330 ON UNITS BUILT AFTER 3/20/2014 UP TO S/N 7562
- USE PART# 0228375 ON UNITS WITH S/N 7562 AND UP

ITEM #11 - HOUSING, RIGHT ROLL

- USE PART# 0228268 ON UNITS BUILT BEFORE 3/30/2014
- USE PART# 0228329 ON UNITS BUILT AFTER 3/30/2014 UP TO S/N 7562
- USE PART# 0228378 ON UNITS WITH S/N 7562 AND UP

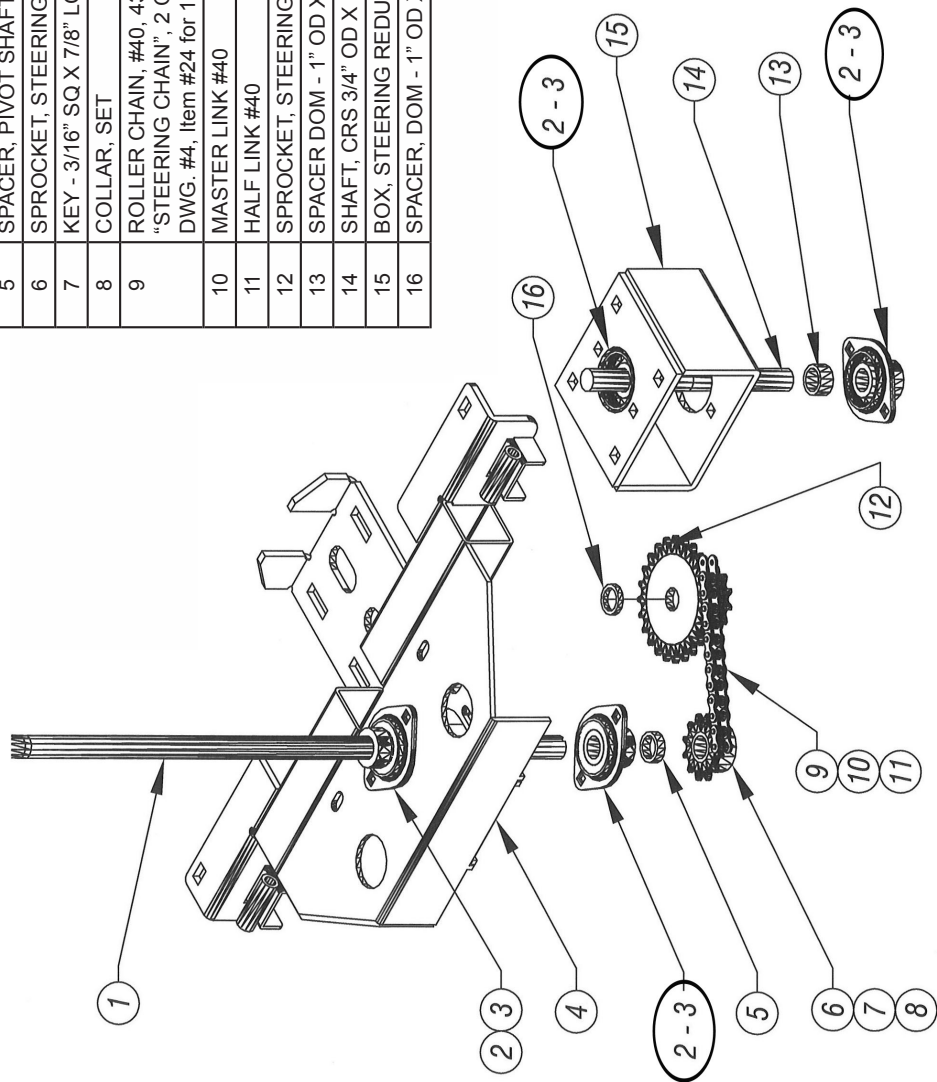
ITEM # 24 - STEERING CHAIN 1 of 2. SEE DWG.#5, ITEM #9 FOR STEERING CHAIN 2 of 2.

GAS GREENS ROLLER HP11 - DWG #4



ISSUED:	02-21-2014
	04-14-2014
	01-11-2013
	10-17-2013
	09-18-2020
	06-01-2023

ITEM	DESCRIPTION	PART NO.	QTY.
1	SHAFT, MAIN FRAME STEERING	0248404	1
2	BEARING INSERT	0303023	4
3	FLANGETTE	0303005	4
4	FRAME	0219488	1
5	SPACER, PIVOT SHAFT	0449286	1
6	SPROCKET, STEERING SHAFT	0351003	1
7	KEY - 3/16" SQ X 7/8" LONG	0431003	1
8	COLLAR, SET	0311006	1
9	ROLLER CHAIN, #40, 43 PITCH "STEERING CHAIN", 2 OF 2 (Note: See DWG. #4, Item #24 for 1 of 2)	0309089	1
10	MASTER LINK #40	0309006	1
11	HALF LINK #40	0309019	1
12	SPROCKET, STEERING REDUCTION	0251215	1
13	SPACER DOM - 1" OD X .12 WALL X 1/2	STOCK	1
14	SHAFT, CRS 3/4" OD X 4-5/8" LONG	STOCK	1
15	BOX, STEERING REDUCTION	0280065	1
16	SPACER, DOM - 1" OD X .12 WALL X 3/16	STOCK	1

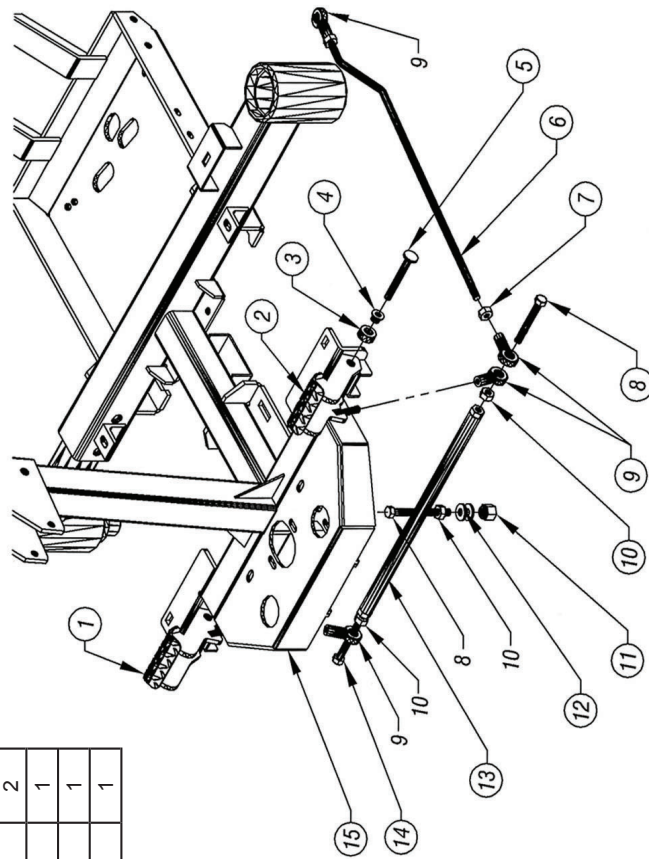


ISSUED:	02-21-2011
	04-14-2011
	12-09-2011
	11-07-2019
	09-18-2020
	06-01-2023

GAS GREENS ROLLER HP 11 - DWG #5

ISSUED:	02-24-2014
	11-07-2013
	09-18-2020
	06-01-2023

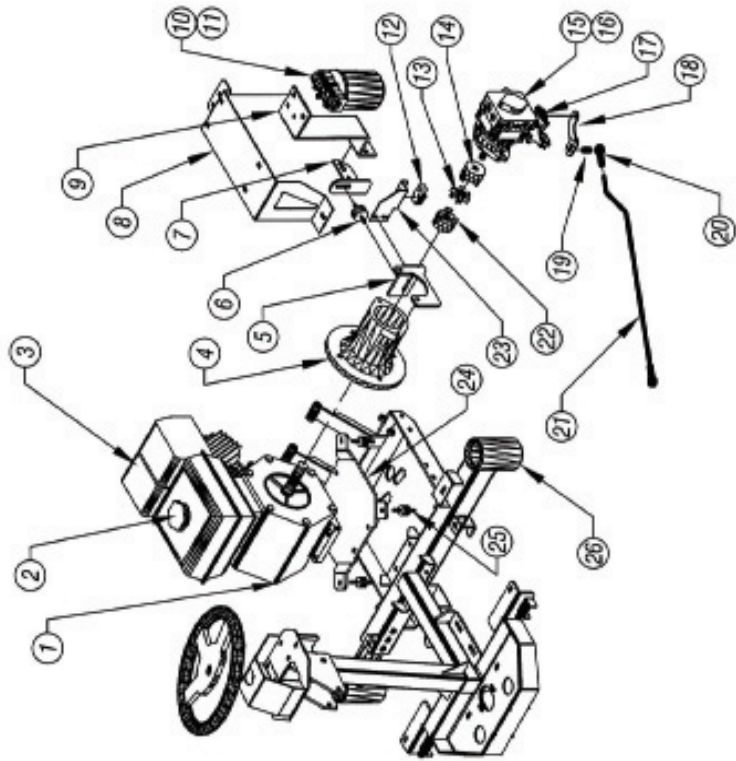
ITEM	DESCRIPTION	PART NO.	QTY.
1	PEDAL, FOOT-RIGHT	0268028	1
2	PEDAL, FOOT-LEFT	0268029	1
3	COLLAR, SET	0311031	2
4	BUSHING, FLANGED, OILITE	0303020	4
5	PIN, FOOT PEDAL PIVOT	0240143	2
6	ROD, FORWARD/REVERSE	0445172	1
7	JAM NUT, 3/8-24	0338059	2
8	SCREW, HEX HEAD	0346254	2
9	ROD END	0303019	4
10	JAM NUT, 3/8-16	0338052	3
11	LOCK NUT, NYLON INSERT	0338102	1
12	FLAT WASHER	0353111	2
13	TUBE, STEERING	0267412	1
14	SCREW, HEX HEAD	0346264	1
15	FRAME, BASE	0219439	1



GAS GREENS ROLLER HP 11 - DWG #6

ISSUED:	02-21-2011
	02-26-2013
	11-07-2013
	09-18-2020
	06-01-2023

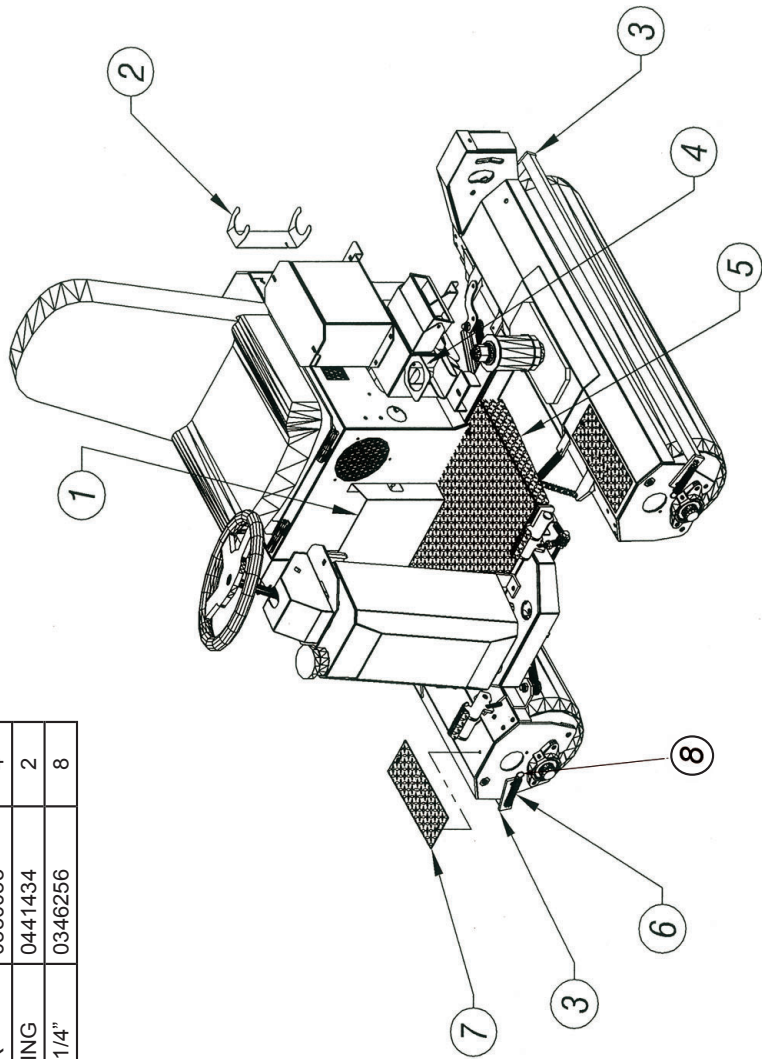
ITEM	DESCRIPTION	PART NO.	QTY.
1	ENGINE, 13HP HONDA	0337033	1
2	GAS CAP, HONDA	0371495	1
3	FUEL SCREEN FILTER	0318048	1
4	BELL HOUSING	0328059	1
5	SUPPORT, HYDRAULIC PUMP	0477231	1
6	RUBBER MOUNT, VIBRATION DAMPING	0376250	1
7	BRACKET, VIBRATION DAMPING	0406877	1
8	MOUNT, BATTERY BOX	0276771	1
9	BRACKET, OIL FILTER	0288045	1
10	HYDRAULIC FILTER & HOUSING	0318022	1
11	HYDRAULIC FILTER, ELEMENT ONLY	0318023	1
12	SWITCH, SNAP ACTION (NEUTRAL)	0315375	1
13	SPIDER COUPLING	0313004	1
14	HUB, 17mm BORE	0313081	1
15	HYDRAULIC PUMP	0330218	1
16	SEAL KIT, HYDRAULIC PUMP	0330222	1
17	LINKAGE, RETURN TO NEUTRAL	0330223	1
18	LEVER, HYDRAULIC PUMP EXTENDED (S/N 1589 AND UP)	0433209	1
18	LEVER, HYDRAULIC PUMP EXTENDED (S/N 0000 - 1588)	0233018	1
19	SPACER, STEEL, 3/8 ID X 5/8 OD X 11/16	STOCK	1
20	ROD END	0303019	2
21	ROD, FORWARD/REVERSE	0445172	1
22	HUB, 1" BORE - LOVEJOY COUPLER	313003	1
23	BRACKET, SWITCH MOUNTING (NEUTRAL)	0480446	1
24	PLATE, ENGINE MOUNT	0462462	1
25	RUBBER MOUNT	0376319	4
26	FRAME, BASE	0219488	1



GAS GREENS ROLLER HP11 - DWG #7

ITEM	DESCRIPTION	PART NO.	QTY.
1	HOLDER, CLIPBOARD	0481053	1
2	HOLDER, MANUAL TUBE	0381057	1
3	SCRAPER, ROLL	0255154	2
4	HOLDER, CAN	0481046	1
5	PLATE, DIAMOND-FLOOR	0441448	1
6	SPRINT, EXTENSION-SCRAPER	0350033	4
7	PLATE, DIAMOND-ROLL HOUSING	0441434	2
8	BOLT, BUTTON HEAD, 3/8" X 1-1/4"	0346256	8

ISSUED:	02-21-2011
	09-18-2020
	06-01-2023



GAS GREENS ROLLER HP 11 - DWG #8

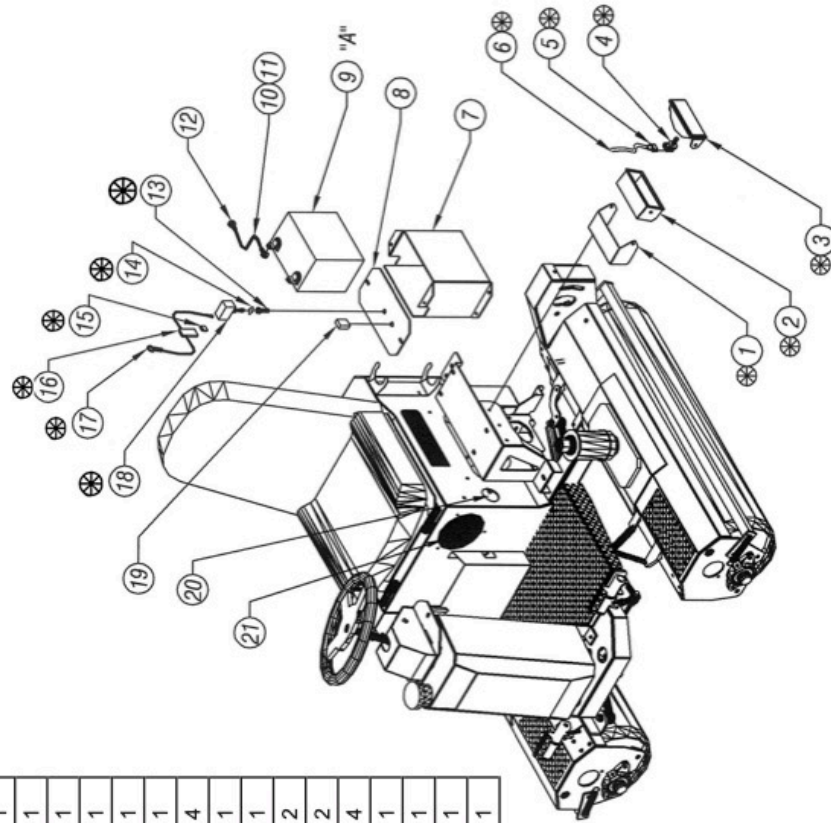
ITEM	DESCRIPTION	PART NO.	QTY.
1	BRACKET, HEADLIGHT BOX PIVOT (Not LED)	0488048	2
1	BRACKET, HEADLIGHT BOX PIVOT, (LED)	0488153	2
2	HEADLIGHT BOX	0280066	2
3	HEADLIGHT/LENS	0315413	2
4	BUB HEADLIGHT (STRAIGHT)	0315138	2
5	PIGTAIL, HEADLIGHT FOR 90° BULB	0315137	2
	90° BULB	0315316	2
6	LOOM, SPLIT - 3/8" DIAMETER	STOCK	1
7	BATTERY BOX	0280053	1
8	COVER, BATTERY BOX	0280053	1
9 "A"	BATTERY 12V (Not Available After Market)	0336008	1
10	BATTERY CABLE - 6GA. BLACK (Bulk)	0315066	1
11	BATTERY CABLE - 6GA. RED (Bulk)	0315121	1
12	CONNECTOR, BATTERY WIRE	0315083	4
13	BOOT, TOGGLE	0315145	1
14	PLATE, ON/OFF	0315155	1
15	FUSE, (IN LINE)	0315168	2
16	HOLDER, FUSE	0315167	2
17	TERMINAL RING	0315260	4
18	SWITCH TOGGLE - HEADLIGHTS	0315143	1
19	RELAY	0315409	1
20	HOUR METER	0315369	1
21	DC ELECTIR FAN (See Note)	0315370	1



ITEMS #1 THROUGH #6 AND ITEMS #13
THROUGH #18 ARE PARTS OF OPTIONAL
LIGHT KIT #0161335

NOTE, ITEM 21:

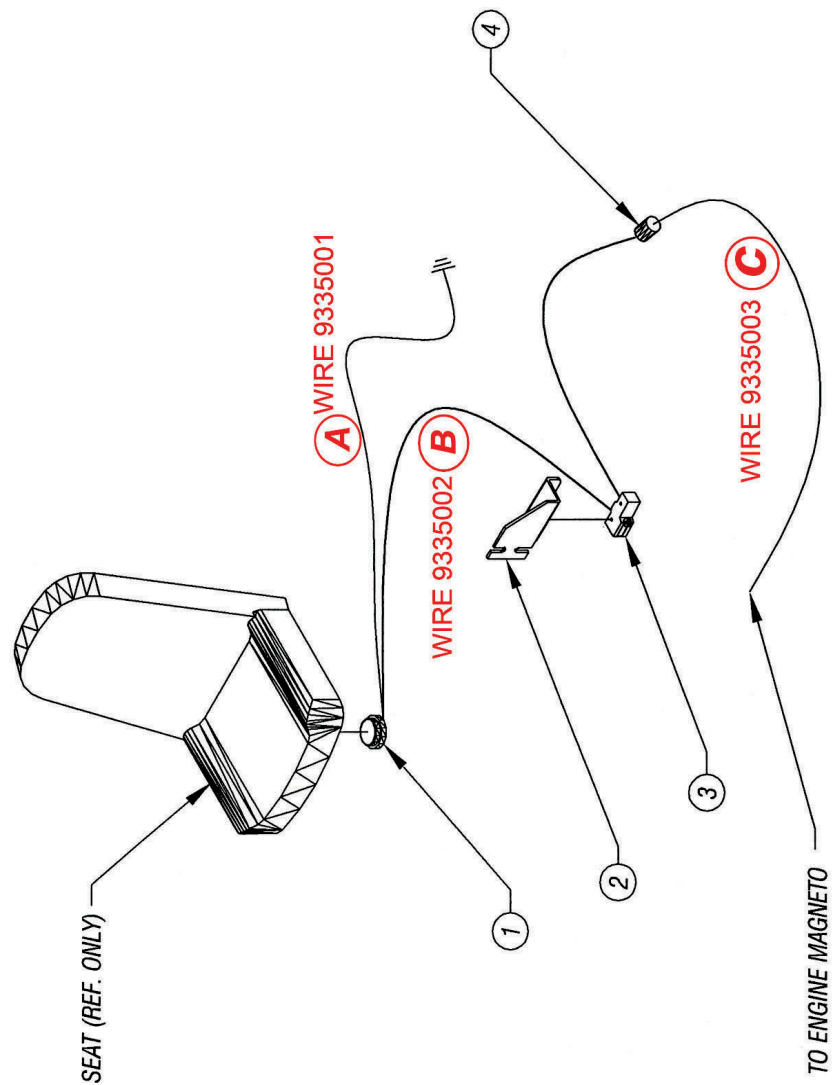
When ordering Cooling Fan, part # 0315370,
must upgrade the Rocker Switch part #
0315390, to the Relay part # 0315409.



GAS GREENS ROLLER HP 11 - DWG #9

ISSUED:	02-21-2011
REVISED:	4-27-2011
	01-26-2012
	06-17-2012
	11-07-2013
	09-18-2020
	06-01-2023

ITEM	DESCRIPTION	PART NO.	QTY.
1	SEAT SWITCH (ENGINE KILL)	0315397	1
2	BRACKET, SWITCH MOUNTING (NEUTRAL)	048046	1
3	SWITCH, SNAP ACTION (NEUTRAL)	0315375	1
4	DISCONNECT, TERMINAL	0315354	1

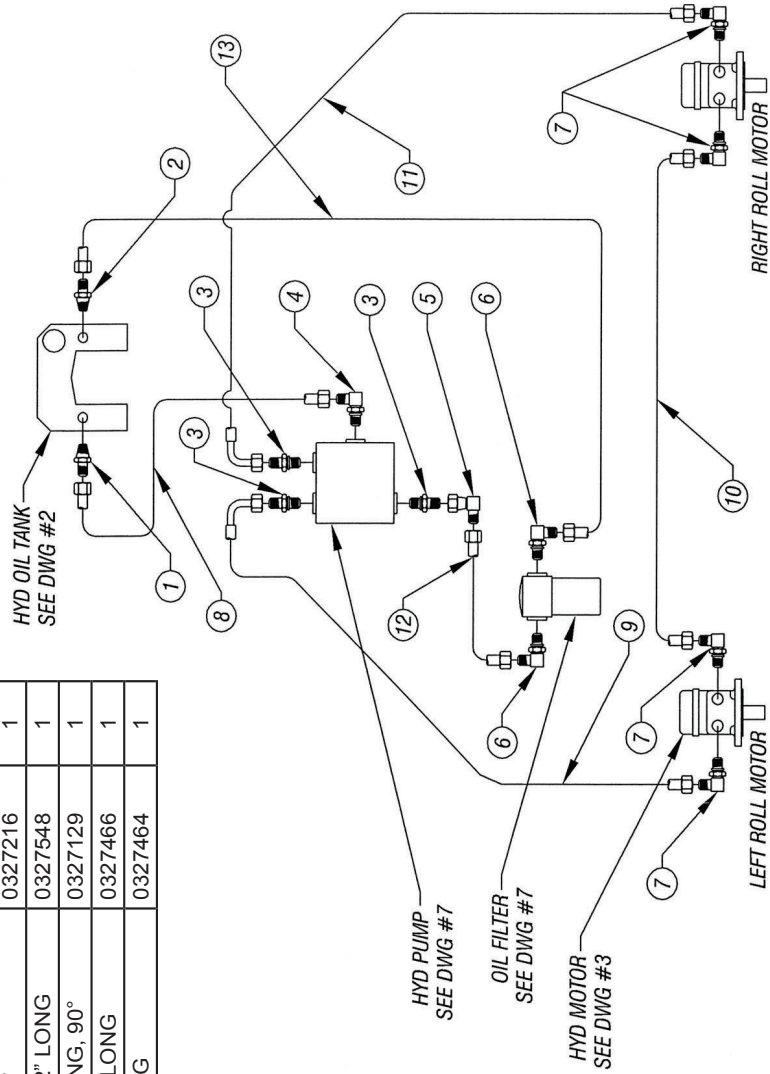


COMPLETE - NEUTRAL SAFETY SWITCH ASSEMBLY
GAS GREENS ROLLER HP 11 - DWG #10

ISSUED:	02-21-2011
	09-18-2020
	06-01-2023

ISSUED:	02-21-2014
	09-18-2020
	06-01-2023

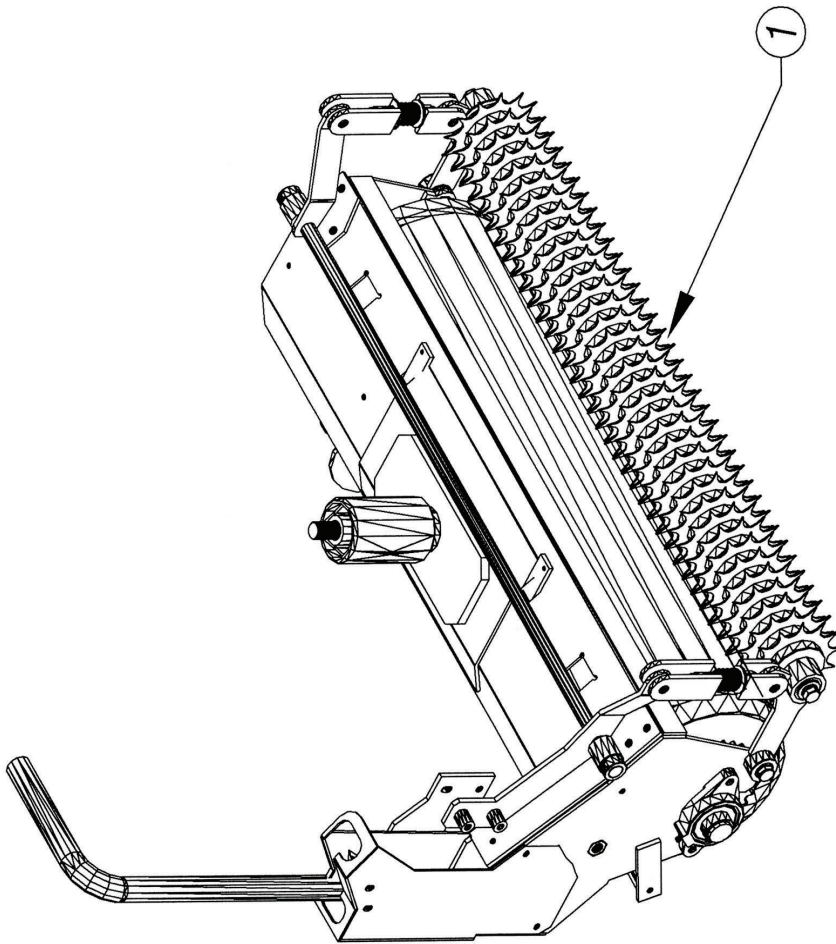
ITEM	DESCRIPTION	PART NO.	QTY.
1	CONNECTOR, 3/8 FLARE X 1/2 MNPT	0317050	1
2	CONNECTOR, 1/2 FLARE X 1/2 MNPT	0317054	1
3	CONNECTOR, 1/2 FLARE X 1/2 O-RING	0317030	3
4	90° ELBOW, 3/8 FLARE X 3/8 O-RING	0317029	1
5	SWIVEL ELBOW, 1/2 FLARE X 1/2 NUT	0317055	1
6	90° ELBOW, 1/2 FLARE X 3/4 O-RING	0317184	2
7	90° ELBOW, 1/2 FLARE X 5/8 O-RING	0317008	4
8	HOSE, TANK TO PUMP, 3/8" ID X 62-1/2" LONG	0327376	1
9	HOSE, PUMP TO MOTOR, 1/2" ID X 18"-90°	0327216	1
10	HOSE, MOTOR TO MOTOR, 1/2 ID X 62-1/2" LONG	0327548	1
11	HOSE, MOTOR TO PUMP, 1/2" ID X 53" LONG, 90°	0327129	1
12	HOSE, PUMP TO FILTER, 1/2" ID X 8" LONG	0327466	1
13	HOSE, FILTER TO TANK, 1/2" ID X 56" LONG	0327464	1



HYDRAULIC COMPONENTS, FITTINGS & HOSES
GAS GREENS ROLLER HP 11 - DWG #11

ITEM	DESCRIPTION	PART NO.	QTY.
1	KIT, INNER SPIKE-AIR - (LEFT)	0161333	1

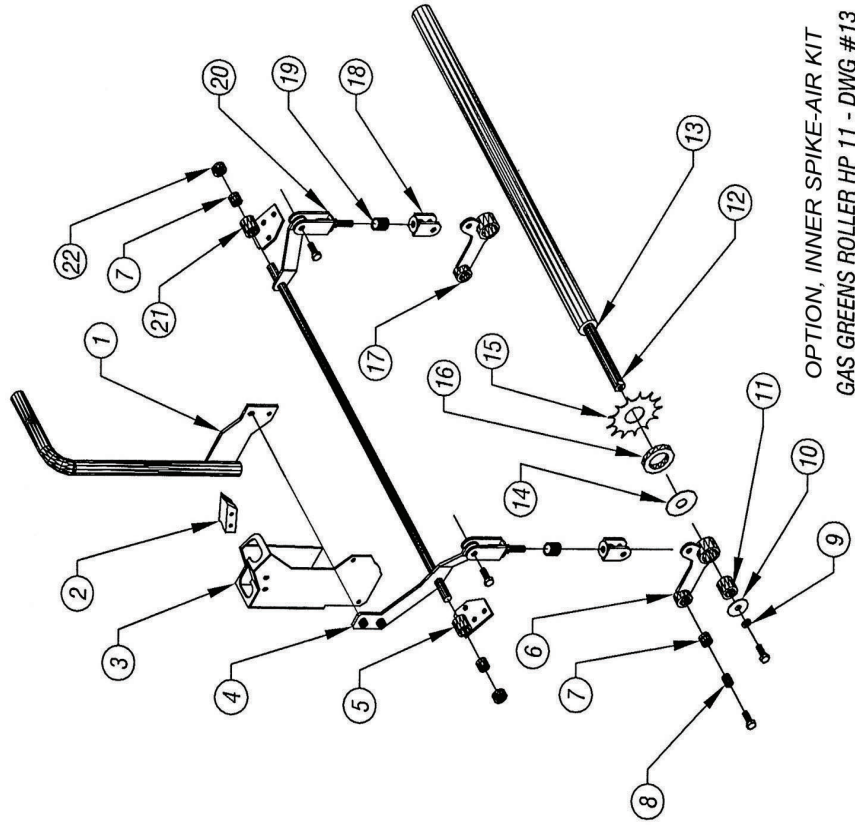
ISSUED:	02-24-2011
	09-18-2020
	06-01-2023



OPTION KIT - INNER SPIKE-AIR (LEFT)
GAS GREENS ROLLER - DWG #12

ITEM	DESCRIPTION	PART NO.	QTY.
1	HANDLE, SPIKE-AIR LEVER - LIFT	0223153	1
2	STOP, SPIKE-AIR LEVER - LIFT	0282084	1
3	BRACKET, SPIKE-AIR LIFT LEVER MOUNTING - (LEFT)	0288049	1
4	ARM, SPIKE-AIR LIFT - (LEFT)	0265131	1
5	MOUNT, SPIKE-AIR LIFT BRACKET - (REAR)	0276769	1
6	ARM, SPIKE-AIR PIVOT - (REAR)	0265123	1
7	BUSHING, OILITE	0307044	2
8	BUSHING, SPIKE-AIR PIVOT ARM	0407043	2
9	LOCK WASHER, SPLIT	0353017	2
10	WASHER, 2" OD	0453335	2
11	BUSHING, UHMW	0407045	2
12	SHAFT, SPIKE-AIR KIT	0448328	1
13	TUBE, SPIKE-AIR STACK	0467577	1
14	SPACER, SPIKE AIR SHAFT (FRONT)	0449334	1
	SPACER, SPIKE AIR SHAFT (REAR)	0449335	1
15	BLADE, SPIKE-AIR	0405162	33
16	SPACER, SPIKE-AIR, SPONGE RUBBER	0449282	68
17	ARM, SPIKE-AIR PIVOT - (FRONT)	0265124	1
18	LINK, SPIKE-AIR SPRING - (BOTTOM)	0234073	2
19	SPRING COMPRESSION	0350049	2
20	LINK, SPIKE-AIR SPRING - (TOP)	0234072	2
21	MOUNT, SPIKE-AIR LIFT BRACKET - (FRONT)	0276770	1
22	SET COLLAR, 3/4 ID	0311006	2

ISSUED:	02-21-2011
	09-24-2012
	06-05-2013
	09-18-2020
	06-01-2023



ITEM	DESCRIPTION	PART NO.	QTY.	ITEM	DESCRIPTION	PART NO.	QTY.
1*	TIRE & WHEEL ASSEMBLY (TREADED)	0354020	2	13	HEX SCREW	0346217	2
2	HUB ASSEMBLY	0329100	2	14	HEX NUT	0338012	2
3*	BEARING KIT	0303111	2	15	CAP, PLASTIC	0371001	4
4	AXLE	0202110	1	16	RUBBER MAT, TRAILER 43" X 45"	0356039	1
5	HEX HEAD SCREW	0346204	12	17	TRAILER FRAME	0219491	1
6	LOCK NUT	0338102	12	18	TONGUE	0225011	1
7	TAIL GATE	0219492	1	19	HEX HEAD SCREW	0346204	8
8	RUBBER MAT, TAILGATE, 43" X 48"	0356043	1	20	LOCK NUT, NYLON INSERT	0338102	8
9	LOCK NUT, NYLON INSERT	0338101	12	21	JACK, SWIVEL - WITH CASTER	0369047	1
10	FLAT WASHER	0353101	12	22	SPRING, EXTENSION	0350009	2
11	PLATE, HOLD DOWN GUIDES	0462585	10	23	BOLT, HEX HEAD - 1/4-20 X 1-14" LONG	0346072	2
12	CARRIAGE BOLT	0346130	12	24	JAM NUT, 1/4-20	0338039	2

***NOTES:**

ITEM #1 - TIRE AND WHEEL ASSEMBLY
HORIZONTAL TREAD OPTION - PART #
0354156

ITEM #3 - BEARING KIT (INCLUDES,
INNER AND OUTER BEARINGS, SEAL,
CAP & LUG NUTS.

TRAILER LATCH ADAPTERS

RIGHT

PART #0275098 - QTY. 1

LEFT

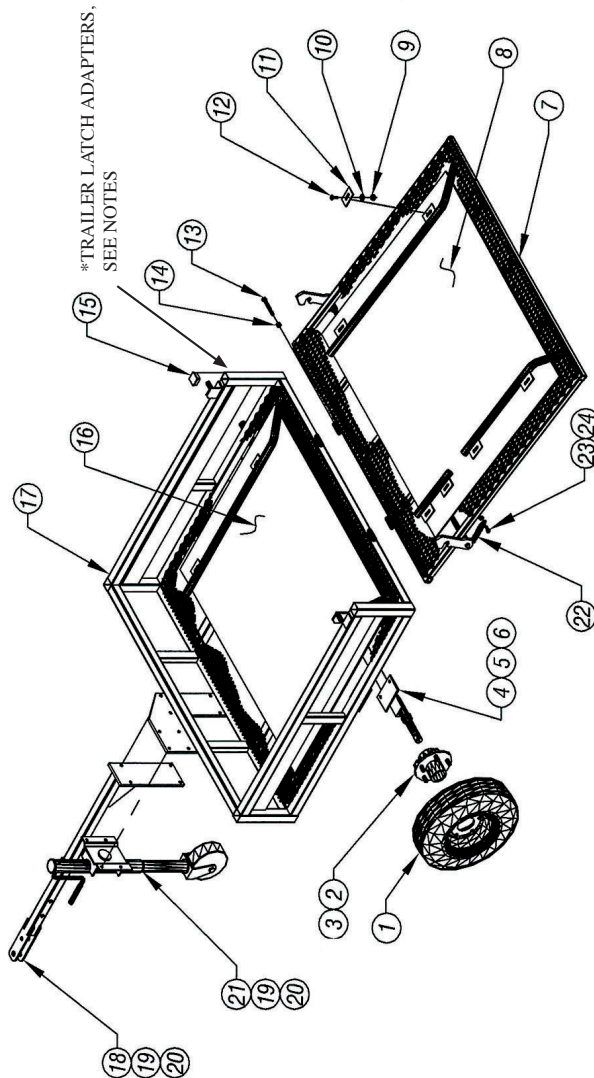
PART #0275099 - QTY. 1

HEX HEAD CAP SCREW, 1/2"-13 X 1-1/4"

PART #0346464- QTY. 2

STOVER NUT, 1/2-13

PART # 0338154 - QTY. 2

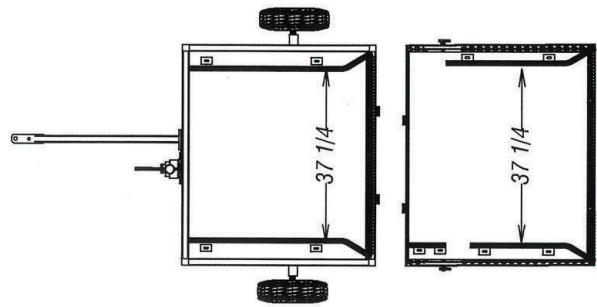


GAS GREENS ROLLER HP11 - DWG #14
0009075 TRANSPORT TRAILER (1 OF 2)

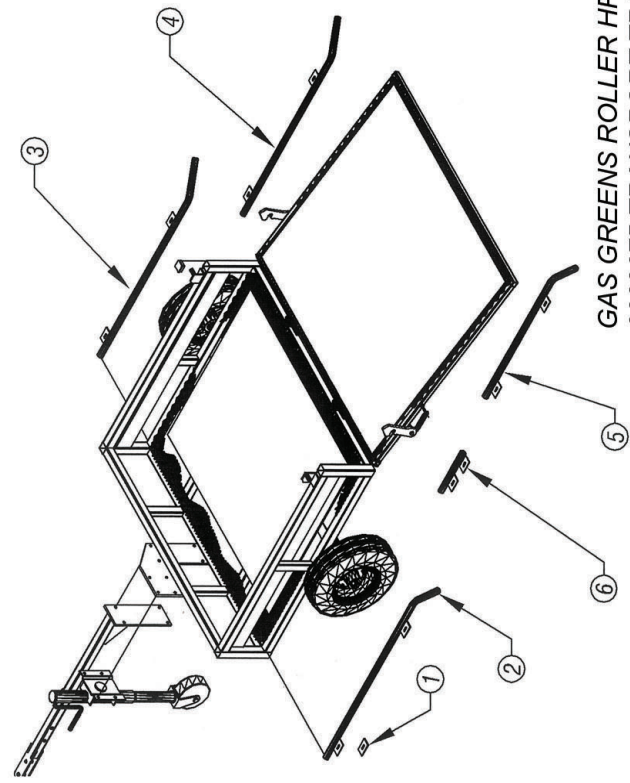
ISSUED:	05-09-2012
	06-12-2013
	09-18-2020
	06-01-2023

ITEM	DESCRIPTION	PART NO.	QTY.
1	GUIDE, TRAILER ROLL - (LEFT)	0222207	1
2	GUIDE, TRAILER ROLL - (RIGHT)	0222208	1
3	GUIDE, TRAILER ROLL - (RIGHT)	0222209	1
4	GUIDE, TRAILER ROLL - (LEFT)	0222210	1
5	GUIDE, TAILGATE ROLL EXTENSION	0222211	1

ISSUED:	05-09-2012
	09-18-2020
	06-01-2023



LOCATION OF
ROLLER GUIDES



GAS GREENS ROLLER HP11 - DWG #15
0009075 TRANSPORT TRAILER (2 of 2)

ITEM	DESCRIPTION	PART NO.	QTY.
1	COLLAR, BRUSH CLAMPING	0211064	2
2	PULLEY, BRUSH DRIVE	0242276	1
3	SHAFT, ROLL BRUSH	0248424	1
4	MOUNT, ROLL BRUSH SHAFT, LEFT IDLER SIDE	0490372	1
5	MOUNT, ROLL BRUSH SHAFT, DRIVE SIDE	0276938	1
6	BEARING INSERT, 5/8" BORE W/LOCKING COLLAR	0303053	2
7	BEARING FLANGETTE, FOR 5/8" BEARING	0303054	4
8	BRUSH, OPEN COIL	0336142	1

ITEM	DESCRIPTION	PART NO.	QTY.
9	V-BELT CONTINUOUS, SINGLE 28" LONG (SEE NOTES)	0304200	1
10	BRACKET, ROLL BRUSH SHAFT MOUNT, LEFT REAR	0288177	1
11	BRACKET, ROLL BRUSH SHAFT MOUNT, LEFT FRONT	0488232	1
12	SCREW, HEX HEAD CAP, 3/8"-16 X 1" LONG	0346249	8
13	NUT, LOCK, 3/8-16 NYLOCK	0338102	8
14	WASHER, FLAT, 3/8" SAE	0253113	8
15	CARRIAGE BOLT, 1/4"-10 X 3/4	0346028	4
16	NYLON LOCK NUT, 1/4"-10 X 3/4	0338100	4

NOTES:

ITEM #9 - BELT, CONTINUOUS 0304200 IS FACTORY INSTALLED DURING PRODUCTION.

REPLACEMENT ORDERS:

* 0304200 V-BELT CONTINUOUS REQUIRES ROLL TO BE DROPPED

FOR INSTALLATION.

* 0404195, ADJUSTABLE V-TWIST BELT, DOES NOT REQUIRE ROLL

TO BE DROPPED, BUT MAY REQUIRE LINK ADJUSTMENTS TO

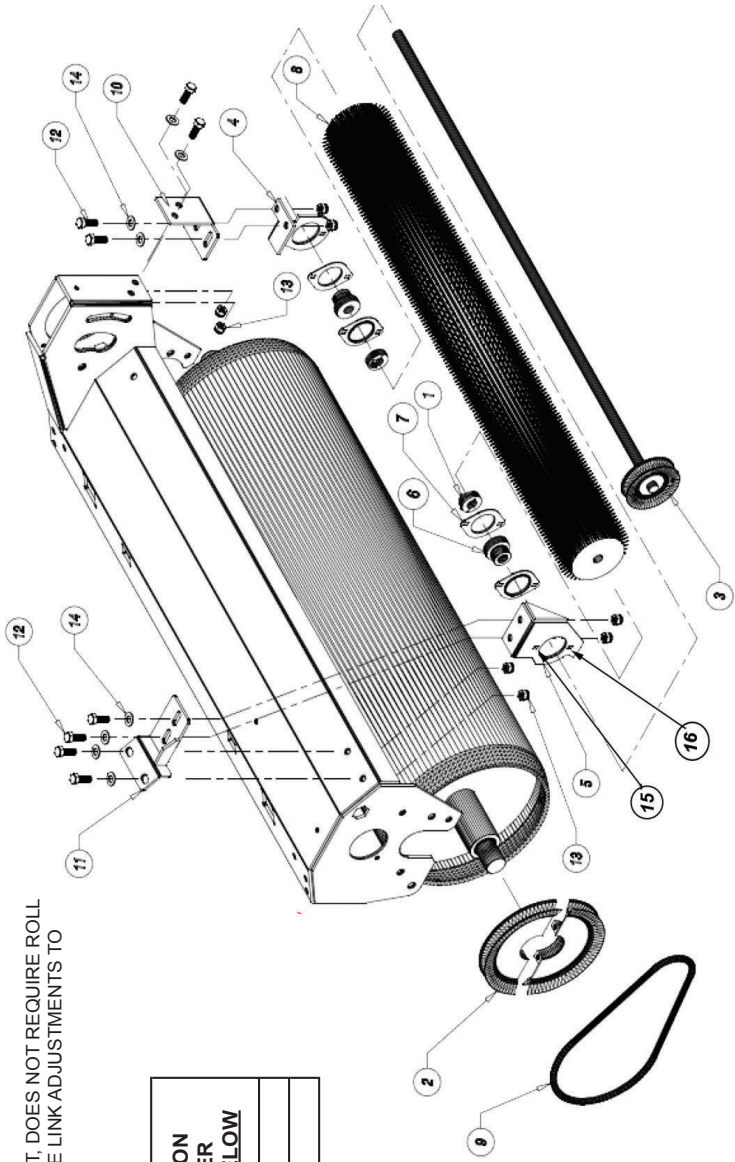
MAINTAIN PROPER TENSION.

**ROTARY BRUSH CROSS CONTAMINATION
PREVENTION KIT - MODEL HP11 ROLLER
INSTALL ON UNITS WITH S/N 7561 & BELOW**

OPTION: 0161370 - REV. D

DWG. 2 of 2

LEFT ROLL



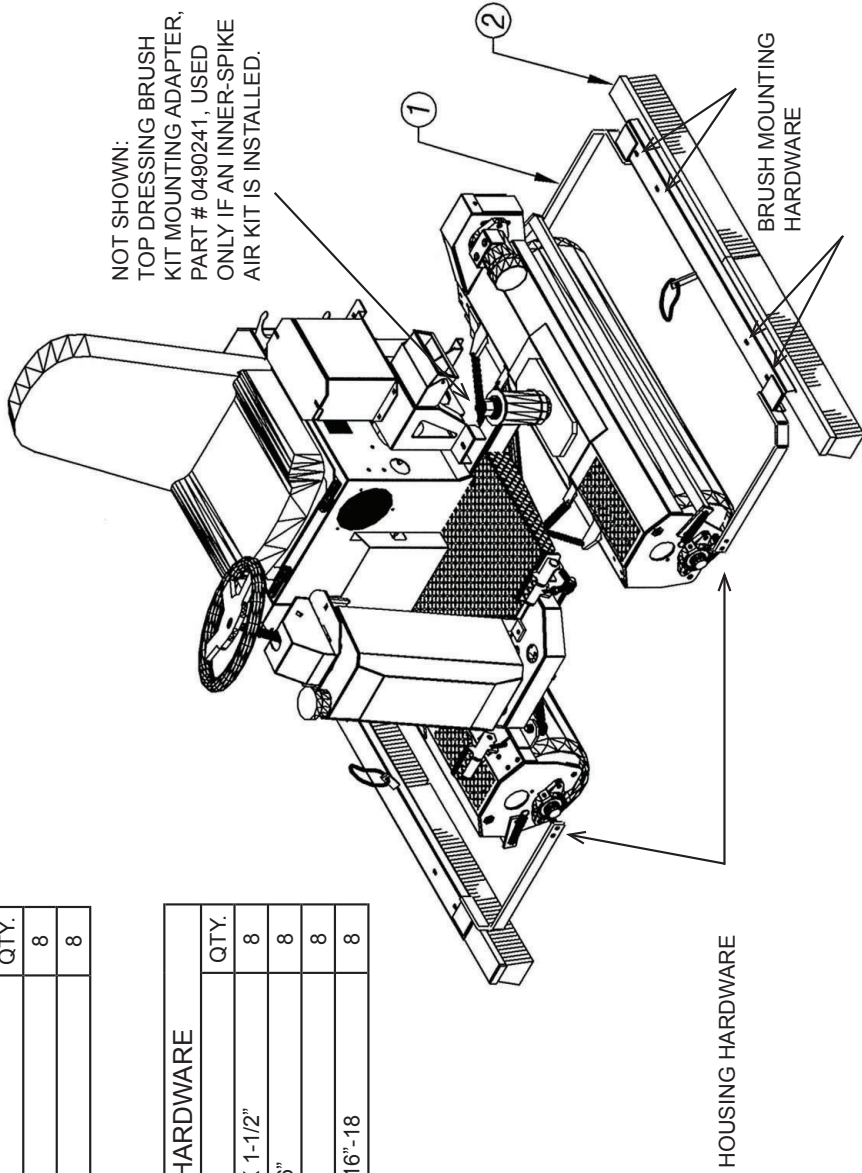
ISSUED:	06-21-2016
	07-05-2022
	03-30-2023
	06-01-2023

ITEM	DESCRIPTION	PART NO.	QTY.
1	HOUSING, BRUSH KIT	0228294	2
2	BRUSHES	0336060	4

ISSUED:	44-43-2043
	9-18-2020
	06-01-2023

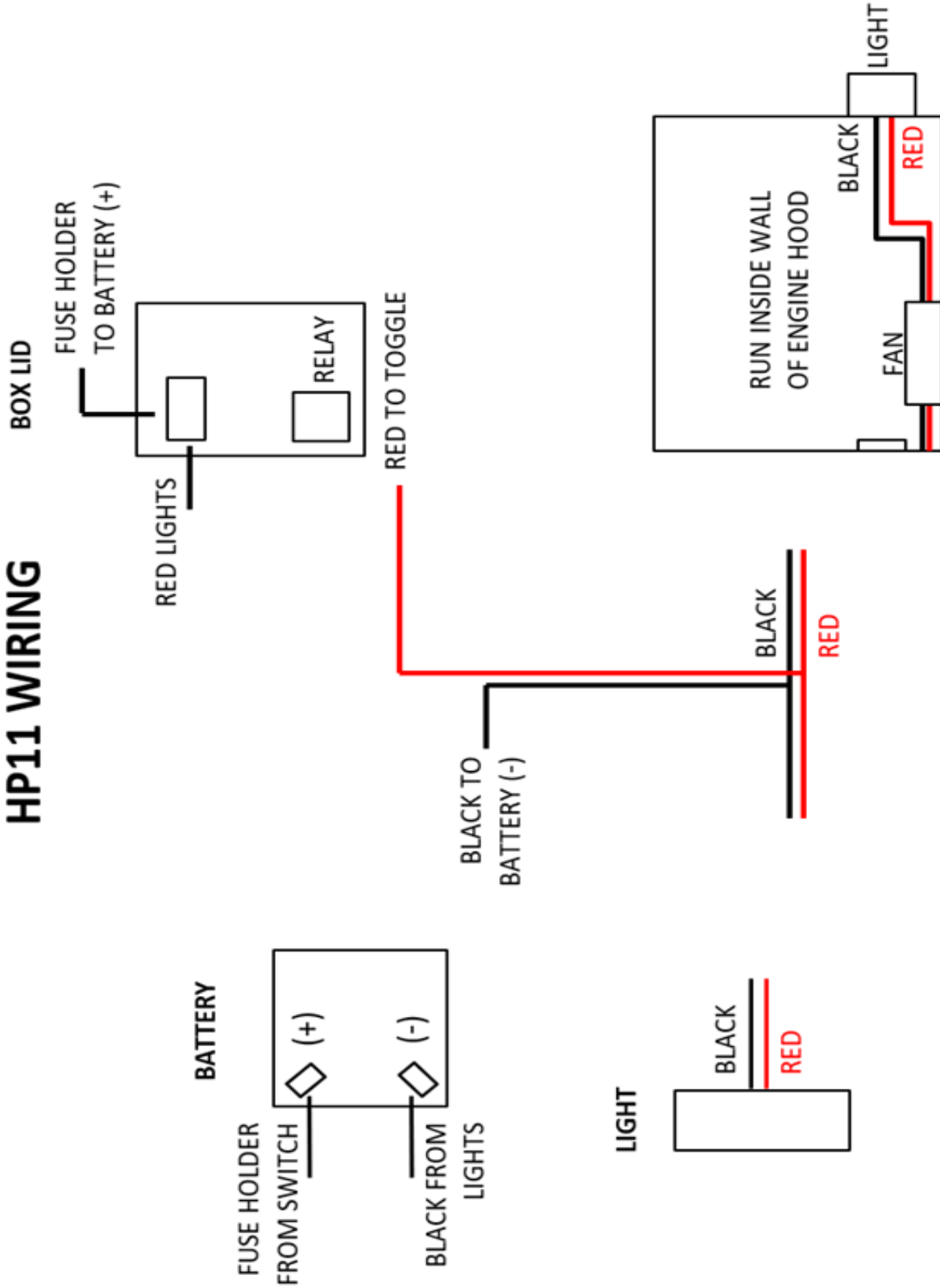
HOUSING HARDWARE		
PART NO.	DESCRIPTION	QTY.
0346265	BOLT, 3/8" X 2-1/2"	8
0338102	NUT, NYLOCK	8

BRUSH MOUNTING HARDWARE		
PART NO.	DESCRIPTION	QTY.
0346131	CARRIAGE BOLT, 5/16" X 1-1/2"	8
0353144	SAE FLAT WASHER, 5/16"	8
0353012	LOCK WASHER, 5/16"	8
0338041	FLAT HEAD HEX NUT, 5/16"-18	8



OPTION - TOP DRESSING BRUSH KIT #0161341
GAS GREENS ROLLER HP11 - DWG #18

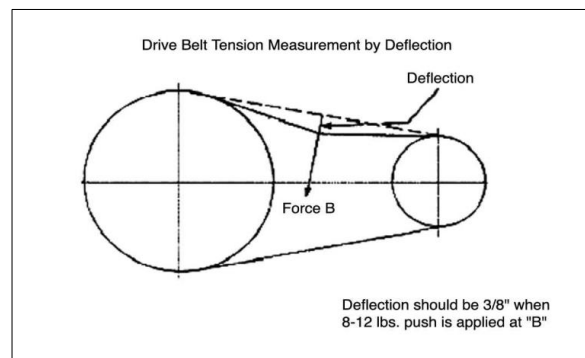
HP11 WIRING



Below is a quick reference chart for various
"Flat Head Cap Screws" and the torque recommendations.

VALUES ARE STATED IN FOOT POUNDS

BOLT SIZE	Thds Per Inch	SAE Grade 5	SAE Grade 8
1/4	20	10	14
	28	---	---
5/16	18	19	29
	24	---	---
3/8	16	33	47
	24	---	---
7/16	14	54	78
	20	---	---
1/2	13	78	119
	20	---	---
9/16	12	114	169
	18	---	---
5/8	11	154	230
	11	---	---
3/4	10	257	380
	10	---	---
7/8	9	382	600
	9	---	---
1	8	587	700
	8	---	---



WARRANTY POLICY

Please remember to complete and return your Warranty Card and Dealer Delivery Report. Warranty Claims will not be considered if the Warranty Card and Dealer Delivery Report have not been returned to Salsco.

Your Salsco Commercial or Turf Equipment product is a commercial type product and is normally manufactured and sold for commercial or industrial use. **Salsco will, for the original purchaser, for (5) years from the date of purchase (90 days if used for rental purposes) repair or replace, free of charge, any part or parts found to be defective in material, workmanship or both.** Any transportation or shipping charges will be borne by the purchaser. If, during the warranty period stated above, the product does not function properly due to defect, simply contact Salsco and follow the Warranty Procedures included in this manual.

This warranty **does not** include:

- Incidental or consequential damages and is exclusive of any implied warranties.
- Normal maintenance parts, including, but not limited to hoses, chains, belts, filters, lubricants, etc.
- Parts or components, which are covered under the original manufacturer warranty, including, but not limited to engines, pumps, and motors.

WARRANTY PROCEDURE

In order for Salsco to consider your warranty claims in a timely manner you must follow the simple procedures listed below:

MACHINE OR PART FAILURE

- a) Call our service department for helpful instruction on how to correct or repair the problem. Preventive maintenance will also be suggested.
- b) When ordering parts for Warranty issues, you **MUST** retain possession of the old parts in question until notified with respect to returning the parts to Salsco or other disposition.
- c) Warranty Claims **MUST** be filed within 30-days from completion of the work performed. Contact our office for an electronic warranty claim form.
- d) Fill in all information requested on warranty claim form, a copy of which is included in this manual, (date of purchase, company name, address, etc.). List all parts used. Make sure part numbers are correct. You can obtain these from your manual. (include good description of problem; i.e. "leaking from spool" rather than "leaking").
- e) It is our goal to consider and reach a disposition on each Warranty Claim within 30-days from the date that it is received. Therefore it is important that you respond promptly to any request for further information. Claims with no response to inquiries will be closed as **"denied for lack of response"** 90-days from the date of request.
- f) Email, Fax or Send Warranty Claim form to our Warranty Department. – **Warranty on parts most often requires return of the parts that were replaced.** DO NOT DISCARD OLD PARTS UNTIL YOU HAVE RECEIVED A DETERMINATION AS TO WHETHER THESE PARTS MUST BE RETURNED.
- g) Our Warranty Department will contact and instruct you on how to return the Parts to Salsco on an RA #. Returns **MUST** be made within 30-Days from issuance of RA #. **FREIGHT CHARGES ON RETURN OF PARTS IS THE RESPONSIBILITY OF THE CUSTOMER.** Normal pre-delivery adjustments are not covered under warranty. Labor Warranties are based on reasonable time allowances as determined by Salsco, Inc. and paid at 75% of posted labor rate. **TRAVEL TIME IS NOT REIMBURSED UNDER THE WARRANTY POLICY.**
- h) Be sure to put the RA form inside the box that you are shipping back, also be sure to put on the outside of the box "Return of Goods" and the RA #.
- i) Ship returns via a traceable method such as UPS Ground Service. Be sure that the shipment is insured for the appropriate value. If uninsured parts are lost, we cannot issue a credit.

PLEASE NOTE: ***Warranty forms should be filled out completely.***

PREVENTIVE MAINTENANCE IS YOUR BEST INSURANCE AGAINST EQUIPMENT FAILURE. BE SURE TO READ THIS MANUAL, ESPECIALLY THE MAINTENANCE, OPERATING AND CAUTION SECTIONS.

**SALSCO, INC., 105 Schoolhouse Rd.
Cheshire, CT 06410
800-872-5726, 203-271-1682
203-271-2596 (Fax) sales@salsco.com, www.salsco.com**

SALSCO WARRANTY CLAIM FORM

SALSCO, INC. 105 SCHOOLHOUSE RD. CHESHIRE, CT 06410		PHONE: 203-271-1682, 800-872-5726 FAX: 203-271-2596 EMAIL: a.fowler@salsco.com WEB: www.salsco.com	
END OWNER		PHONE:	
NAME:		FAX:	
EMAIL:			
ADDRESS:			
PURCHASED FROM:		PHONE:	
NAME:		FAX:	
EMAIL:			
ADDRESS:			
EQUIP/WARRANTY INFO: (MUST BE COMPLETE)			
PURCHASE DATE:		INV #:	DATE FAILED:
MODEL #:		SERIAL #	REPAIR DATE:
HRS USED:			
WARRANTY CLAIM/WORK ORDER #			
WAS A SALSCO RETURN AUTH. # ISSUED FOR REPAIRS OR RETURN OF PARTS: YES NO			
IF YES, RA #:			
PROBABLE CAUSE OF FAILURE:			

SALSCO WARRANTY CLAIM FORM - Continued

WORK PERFORMED/COMMENTS ON REPAIR:				
SHOP LABOR RATE:		SUBMITTED BY:		
TOTAL LABOR HRS TO REPAIR:		PRINTED NAME:		
SALSCO PART #: DESCRIPTION:	QTY	PRICE EACH	TOTAL	INVOICE #:
<p>FILL IN ALL INFORMATION REQUESTED ON WARRANTY CLAIM FORM. INCOMPLETE FORMS CANNOT BE PROCESSED & WILL BE RETURNED. LIST ALL PARTS USED. MAKE SURE PART NUMBERS ARE CORRECT. ANY PARTS THAT YOU BELIEVE TO BE DEFECTIVE OR ANY PARTS THAT BREAK SHOULD BE RETAINED FOR POSSIBLE INSPECTION UNTIL AFTER THE WARRANTY HAS BEEN PAID OR PART HAS BEEN RETURNED. INV. # NEEDS TO BE INCLUDED ON WARRANTY CLAIM.</p>				
OFFICE USE ONLY				
DATE REC'D:		DLR. DEL REPORT ON FILE: YES NO		
CUST ID:		WARRANTY CLAIM ON FILE: YES NO		
SALSCO WC:		PARTS TOTAL:		
SALSCO RA:		LABOR TOTAL:		
DATE APPROVED:		TOTAL APPROVED:		
DATE REJECTED:		REJECTED DATE:		
PROCESSED BY:		REASON:		

SALESMAN ID # _____

SALES MANAGER'S NAME _____

800-872-5726, 203-271-1682 203-271-2596 (Fax)		SALSCO, INC. 105 School House Road Cheshire, CT 06410		www.salsco.com sales@salsco.com	
DEALER DELIVERY REPORT					
MODEL:		SERIAL NO:			
DEALER:		CITY:		STATE: ZIP:	
PURCHASER:		ADDRESS:		CITY: ST: ZIP:	
The undersigned dealer warrants that the above-described machine was carefully inspected, adjusted and prepared for delivery before delivery to the purchaser; that both the operation and maintenance of the machine were explained to the purchaser; and that a copy of the Owner's Instruction Manual were given to the purchaser and his attention called to Our Warranty and any operating instructions included in the manual and caution notes.			The undersigned purchaser certifies that the operation and maintenance of the above-described machine have been explained to him; acknowledges receipt of a copy of the Owner's Instruction Manual and Our Warranty Policy printed in said Instruction Manual and Caution Notes. I also understand that it is my responsibility to explain and make Salsco manuals available to new operators.		
DATE:		DATE: PURCHASER:			
SIGN BY:		SIGN BY:			
PHONE:		FAX:		PHONE:	
E-Mail		EMAIL:			

MODEL:		SERIAL NO:			
<u>SALSCO LIMITED WARRANTY CARD</u>					
DATE PURCHASED:					
PURCHASER:		ADDRESS:		CITY: ST: ZIP:	
EMAIL:			PHONE:		
DEALER:			STATE: CT		
Will this equipment be used commercially?			Yes	No	
Did Dealer service this equipment and instruct you in its care and safe operation?			Yes	No	
Did you receive an "Operation & Service Manual" and safety pamphlet?			Yes	No	
Signed			Purchaser		
<u>NOTICE:</u> IMPORTANT: THIS CARD MUST BE FILLED OUT COMPLETELY AND MAILED TO THE FACTORY WITHIN 10 DAYS OF PURCHASE DATE, OR YOUR LIMITED WARRANTY WILL BE VOIDED.					

GAS GREENS ROLLER SERVICE INTERVAL SCHEDULE

After ___ hours / Daily / Weekly / Yearly / See vendor manual

ENGINE - Check Honda service manual for recommended service intervals.

	H	D	W	Y	MANUAL
Check oil level		X			
Change oil	500				
Change oil filter	500				
Change fuel filter	500				
Check all for leaks		X			

HYDRAULIC SYSTEM

	H	D	W	Y	MANUAL
Grease hydraulic cylinders, pins, etc. where applicable			X		
Check for leaks (all hoses and fittings at both hose ends)		X			
Check hydraulic oil level ... <i>only if you see leaks</i>					
Change hydraulic oil First 500	1000				
Change hydraulic oil filter First 500	1000				
Inspect hoses for chafing, cracks, etc. and assure nothing impedes		X			

ADJUSTMENTS & DRIVES

	H	D	W	Y	MANUAL
Check all nuts, bolts, other fasteners for tightness			X		
Check chains for proper lubrication, wear, and tension			X		
Check belts for proper wear and tension (is belt dressing recommended?)			X		
Grease bearings, cylinders, steering shaft (is this a sealed bearing?)			X		

TRAILER

	H	D	W	Y	MANUAL
Check tire pressure (recommended pressure)			X		
Inspect tires for dry rot, tread wear, damage, etc.		X			
Grease axle and wheel hubs				X	

RECOMMENDED OIL - Fill within 6" of the top to avoid overflow when it gets hot.

Models 09065 / 09067	AW68 Hydraulic Oil
HP11	AW68 Hydraulic Oil
HP5.5	AW68 Hydraulic Oil
HP11-III	15-50 Motor Oil
Roll-n-Go, EHA	15-50 Motor Oil
Tranz-Former, EHA 5-G	10-40 Motor Oil

SERVICE RECORD

If kept properly, this schedule will help track problems in the future.

[illegible]

MODEL # _____ S/N _____

DATE PURCHASED: _____