

## OPERATORS AND PARTS MANUAL SCORPION ROUTER



---

**MANUFACTURER OF OUTDOOR POWER EQUIPMENT**

Products for Turf & Lawncare, Rental, Construction, Tree care, Wood Processing, Nursery & Farm Industries

*Other Salsco Equipment*

**3-1/2" - 18", Gas, Diesel, and P.T.O, Wood/Brush Chippers**

**Chipper Shredder Vacuum - Tailgate & Truckloader Vacuums up to 65 HP**

**Shaving Mills - Gas and Electric Greens Rollers**

*Quality of Workmanship, Innovative  
Design, Built to Last!*

105 School House Road  
Cheshire, CT 06410 U.S.A.  
800-872-5726, 203-271-1682, 203-271-2596 (Fax)  
sales@salsco.com, www.salsco.com

**TABLE OF CONTENTS**  
**SCORPION PAVEMENT ROUTER**

COVER & TABLE OF CONTENTS.....Pages 1 – 2

STATEMENT OF FACT ..... Page 3

SPECIFICATIONS & FEATURES .....Page 4

SAFETY & OPERATING INSTRUCTIONS .....Pages 6 - 7

SERVICE & MAINTENANCE INSTRUCTIONS .....Page 7

PARTS DIAGRAMS .....Pages 8 - 9

TORQUE CHARTS .....Page 10

SERVICE SCHEDULE LOG .....Page 14

**SALSCO, INC.**  
105 School House Road  
Cheshire, CT 06410 USA  
800-872-5726, 203-271-1682  
203-271-2596 (Fax)  
[www.salsco.com](http://www.salsco.com), [sales@salsco.com](mailto:sales@salsco.com)

## **STATEMENT OF FACT**

You have just purchased the highest quality, most dependable, crack router on the market today. This unit has the ability to meet exact standards and perform for years with minimum downtime. **HOWEVER**, it cannot read nor will it understand this manual no matter how long you leave it on top of the machine.

**It is your responsibility** to read and understand this manual; it is also your responsibility to be certain this information is passed along to anyone who is expected to operate this equipment. Should you choose not to read, understand and pass along the information provided you, please expect equipment failure and possible injuries to persons around this equipment.

For the safety of the operator, it is **imperative** that this manual is carefully read and understood.

Once you have read this manual, it is your responsibility to be sure that all new operators read and understand this manual, especially all cautions stated.

As a manufacturer of equipment, we have a responsibility to design a safe piece of equipment. **NOTE:** The important safeguards and instructions in this manual are not meant to cover all possible conditions and situations that may occur. It must be understood that common sense, caution, and care are factors, which cannot be built into any product. These factors must be supplied by the person(s) caring for and operating this equipment.

**ONLY YOU CAN PREVENT ACCIDENTS!**

## **SPECIFICATIONS AND FEATURES**

The Salsco Pavement Router, like all of Salsco products, is ruggedly built to withstand high volume usage by the golf course, farmer, homeowner and tree care industries.

Standard equipment includes:

- Two casters at rear providing smoother maneuvering over rough terrain.
- Controls located on one convenient panel.
- Large pneumatic tires providing greater shock absorption.
- One piece tool shaft.
- Six sizes of bits available for a wider range of applications.
- Routing tool is easily installed and removed.

Engine Options include: 10.5 HP BRIGGS & STRATTON

### **DIMENSIONS:**

Length - 44"

Width - 22"

Height - 39 1/2"

Shipping Weight Approximately 130 LBS.

<b>Router Bits</b>						
Part #	0205076	0205075	0205074	0205073	0205072	0205071
Size	1/4"	3/8"	1/2"	5/8"	3/4"	1"
Length	1 1/2"	1 1/2"	1 1/2"	1 1/2"	1 1/2"	1 1/2"

Bits are sized to fit joint or crack, resulting in excellent anchor points for sealant material adhesion. Depending upon aggregate, depth and width of cut required, production is estimated at 100-200 feet per hour.

**SIMPLE AND SAFE OPERATION, EASY TO MAINTAIN AND BUILT TO LAST;  
SALSCO, SCORPION PAVEMENT ROUTER**

## **SAFETY PRECAUTIONS**

### **THE FOLLOWING SAFETY PRECAUTIONS ARE SUGGESTED TO HELP PREVENT ACCIDENTS**

A CAREFUL OPERATOR IS THE BEST OPERATOR. MOST ACCIDENTS CAN BE AVOIDED BY OBSERVING CERTAIN PRECAUTIONS. READ AND TAKE THE FOLLOWING PRECAUTIONS BEFORE OPERATING THIS ROUTER TO HELP PREVENT ACCIDENTS. EQUIPMENT SHOULD BE OPERATED ONLY BY THOSE WHO ARE RESPONSIBLE AND INSTRUCTED TO DO SO.

**READ** engine manual for proper fuel/oil levels, **BEFORE** starting engine!

**READ** operator's manual before operating this router.

**ALWAYS** use protective eyewear when machine is in operation.

**ALL** shields and guards **MUST** be in place before operating router.

**DO NOT** allow adults to operate the router without proper instructions. **KNOW** the controls and their functions prior to operation. **KNOW** how to shut off quickly.

**DO NOT** modify, alter or permit anyone else to alter or modify this router or any of its components or any function.

**DO NOT** allow children to operate the router.

**DO NOT** use unless the area of operation is clear of all persons, especially small children.

**REPLACE** safety warning and operating instruction decals when they become damaged.

**DO NOT** start router with bit or attachment touching ground.

**NEVER** leave the operator's position with the engine running.

**DO NOT** operate on severe slopes, hills or embankments.

**DO NOT** operate with faulty or missing muffler.

**DO NOT** operate gasoline engine indoors. Exhaust fumes can cause death.

**ALWAYS** keep people and pets a safe distance **AWAY** from machine.

**ALWAYS** shut engine off and disconnect spark plug wire before performing any maintenance.

**CLEAN** work area before using router.

**HANDLE** gasoline with **CARE**. It's highly flammable. Use only approved gasoline container.

**DO NOT** attempt to fill gas tank from fuel container unless the spout or funnel fits inside the fuel tank.

**NEVER** fill gas tanks indoors.

**NEVER** take the cap off or refuel while the engine is running or hot. Allow engine to cool for several minutes before refueling.

**DO NOT** fill tank to capacity. To avoid spillage when filling fuel tank, allow room for expansion. Wipe up any spills immediately.

**DON'T** smoke while refueling or anywhere near fuel.

**DO NOT** store, spill, or use gas near open flame.

**ALWAYS** replace missing fuel cap with approved replacement.

**NEVER** use gasoline to clean parts.

## **OPERATING INSTRUCTIONS**

Portland or asphaltic cement concrete – Use a sharp tool at all times! A dull tool means lost production.

For routing of random cracks, it is necessary for the operator to pull the machine toward him/her, traveling in a backward direction, along the crack. This permits the operator to guide the bit through the most erratic path the crack may take. Any crack, no matter the width, is still the line of least resistance and the bit will follow it if allowed to do so.

In all operations, it is **MANDATORY** that the operator keep the machine in constant motion. If not kept in motion, the bit will drill a hole, making routing impossible.

Working in sections of about 4 ft., extend your arms on the router handle. While pulling the machine toward you, lower the bit slightly. Repeat in same location until desired depth is reached then move backward and repeat. **DO NOT** try to reach full depth in one pass. Once having opened up the crack, increase the depth and width by constant movement of the router back and forth.

## **MAINTENANCE**

The SCORPION PAVEMENT ROUTER is designed to give the utmost in service with a minimum of breakdowns, but to do this, an inspection schedule by the operator must be used.

### **ENGINE – Daily**

Check crankcase oil. Use and change in accordance with manufacturer instructions.

- Check fuel. Use a clean dry container and fresh fuel.
- Check and clean air filter.
- Check engine, exhaust, carburetor, etc. for secure attachment.

### **LUBRICATION**

There are four (4) lubrication points on your Scorpion Router. One on each of the large wheels, and one on each of the bearings. Be sure that they are accepting grease and grease them every 25 hours.

### **BELTS**

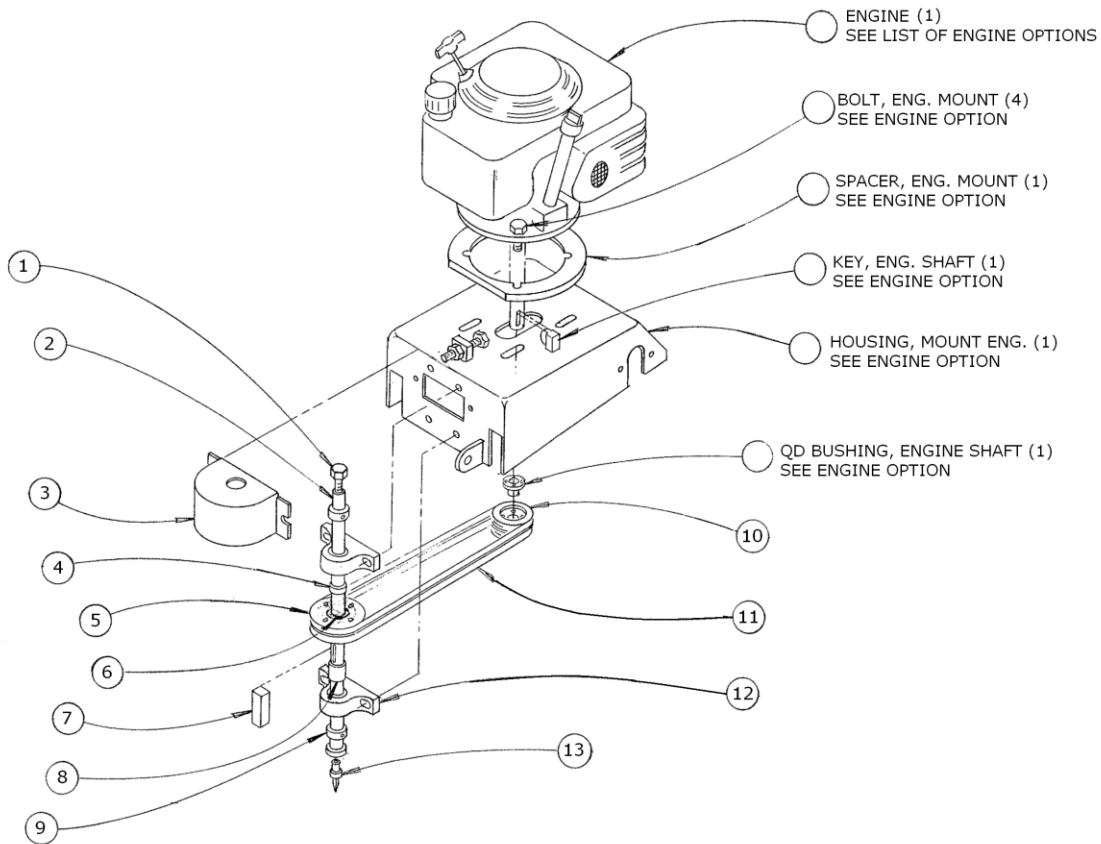
After three to four hours, or as conditions warrant from initial operation, check belts for proper adjustment and tension. Repeat same procedure again after every 25-hour interval.

The following steps are to be taken when adjusting belts:

1. Loosen motor mounting bolts.
2. Slide engine forward to desired belt tension.
3. Tighten motor mounting bolts.

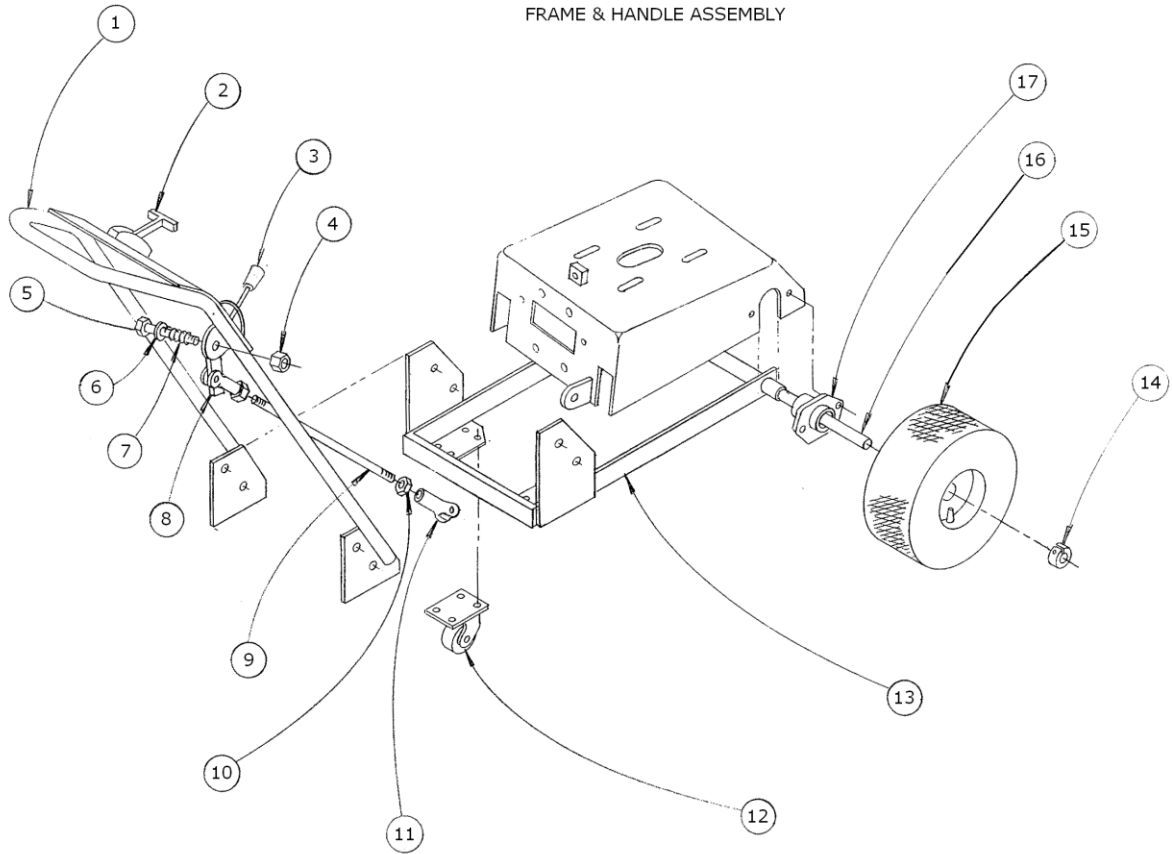
## **A LOOSE BELT CAN GREATLY REDUCE PRODUCTION**

**PAVEMENT ROUTER**  
SHAFT & ENGINE FRAME ASSEMBLY



<b><u>SHAFT &amp; ENGINE FRAME ASSEMBLY</u></b>			
<b>Item #</b>	<b>Description</b>	<b>Part #</b>	<b>Qty.</b>
1	Tool Bolt	0346221	1
2	Tool Shaft	0448116	1
3	Guard, Pulley	0221203	1
4	Spacer, Upper	0449104	1
5	Pulley, Tool Shaft	0342098	1
6	QD Bushing, Tool Shaft	0342099	1
7	Key, Tool Shaft	0331112	1
8	Spacer, Lower	0449103	1
9	Collar, Set	0311008	2
10	Pulley, Engine	0342096	1
11	"V" Belt	0304065	2
12	Pillow Block	0303046	2
13	1/4" x 1-1/2" Carbide Tipped Router Bit	0205076	1
	3/8" x 1-1/2" Carbide Tipped Router Bit	0205075	1
	1/2" x 1-1/2" Carbide Tipped Router Bit	0205074	1
	5/8" x 1-1/2" Carbide Tipped Router Bit	0205073	1
	3/4" x 1-1/2" Carbide Tipped Router Bit	0205072	1
	1" x 1-1/2" Carbide Tipped Router Bit	0205071	1

**PAVEMENT ROUTER**  
FRAME & HANDLE ASSEMBLY



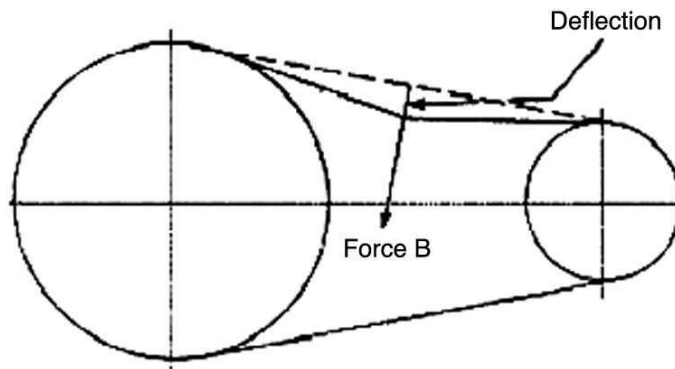
<b><u>FRAME &amp; HANDLE ASSEMBLY</u></b>			
<b>Item #</b>	<b>Description</b>	<b>Part #</b>	<b>Qty.</b>
1	Handle Bar	0223062	1
2	Throttle Cable	0337174	1
3	Knob	0332018	1
4	Nut, Hex	0338101	1
5	Bolt	0346108	1
6	Washer, Flat	0353101	1
7	Spring, Compression	0350005	1
8	Handle, Height Adjuster	0223066	1
9	Rod, Height Adjuster	0445100	1
10	Jam Nut, Hex	0338059	2
11	Yoke, Adjustable	0374019	2
12	Caster Wheel	0354050	2
13	Frame, Engine/Axle	0219225	1
14	Collar, Split	0311021	2
15	Tire/Wheel Assembly	0354049	2
16	Axle, Wheels	0402057	1
17	Bracket, Axle	0206459	2

**Below is a quick reference chart for various “Flat Head Cap Screws” and the torque recommendations.**

**VALUES ARE STATED IN FOOT POUNDS**

<b>BOLT SIZE</b>	<b>Thds Per Inch</b>	<b>SAE Grade 5</b>	<b>SAE Grade 8</b>
1/4	20	10	14
	28	---	---
5/16	18	19	29
	24	---	---
3/8	16	33	47
	24	---	---
7/16	14	54	78
	20	---	---
1/2	13	78	119
	20	---	---
9/16	12	114	169
	18	---	---
5/8	11	154	230
	11	---	---
3/4	10	257	380
	10	---	---
7/8	9	382	600
	9	---	---
1	8	587	700
	8	---	---

Drive Belt Tension Measurement by Deflection



Deflection should be 3/8" when 8-12 lbs. push is applied at "B"

