

**Salsco, INC.**  
LEADER BY DESIGN

**MADE IN THE U.S.A**

**OPERATORS AND PARTS MANUAL**  
MODEL 0009101 - ROLL-N-GO



**MANUFACTURER OF OUTDOOR POWER EQUIPMENT**

Products for Turf & Lawn care, Rental, Construction, Tree care, Wood Processing, Nursery & Farm Industries

*Other Salsco Equipment*

**3-1/2" - 18", Gas, Diesel, and P.T.O, Wood/Brush Chippers**  
**Chipper Shredder Vacuums - Tailgate & Truckloader Vacuums**  
**Shaving Mills - Gas and Electric Greens Rollers**

---

***Quality of Workmanship, Innovative  
Design, Built to Last!***

105 School House Road  
Cheshire, CT 06410 U.S.A.  
800-872-5726, 203-271-1682, 203-271-2596 (Fax)  
sales@salsco.com, www.salsco.com

**TABLE OF CONTENTS**

**MODEL 0009101 DESCRIPTION**

COVER & TABLE OF CONTENTS.....Pages 1 – 2

STATEMENT OF FACT ..... Page 3

SPECIFICATIONS & FEATURES .....Page 4

MACHINE REGISTRATION .....Page 5

HYDRAULIC OIL RECOMMENDATIONS (MSDS SHEET).....Page 6-7

OPERATING INSTRUCTIONS.....Page 8

PARTS DIAGRAMS .....Pages 9-28

ROTARY BRUSH SYSTEM OPTION.....Page 29

TORQUE CHARTS .....Page 30

WARRANTY POLICY & PROCEDURE .....Page 31-32

COPY OF WARRANTY CLAIM FORM.....Page 33-34

COPY OF DEALER DELIVERY REPORT & WARRANTY CARD.....Page 35

SERVICE SCHEDULE LOG .....Page 36

**SALSCO, INC.**

105 School House Road  
Cheshire, CT 06410 USA  
800-872-5726, 203-271-1682  
203-271-2596 (Fax)  
[www.salsco.com](http://www.salsco.com), sales@salsco.com

## **STATEMENT OF FACT**

You have just purchased the highest quality, most dependable, GREENS ROLLER on the market today. This unit has the ability to meet exact standards and perform for years with minimum downtime. **HOWEVER**, it cannot read nor will it understand this manual no matter how long you leave it on top of the machine.

It is your responsibility to read and understand this manual; it is also your responsibility to be certain this information is passed along to anyone who is expected to operate this equipment. Should you choose not to read, understand and pass along the information provided you, please expect equipment failure and possible injuries to persons around this equipment.

For the safety of the operator, it is imperative that this manual is carefully read and understood.

Once you have read this manual, it is your responsibility to be sure that all new operators read and understand this manual, especially all cautions stated.

As a manufacturer of equipment, we have a responsibility to design a safe piece of equipment. NOTE: The important safeguards and instructions in this manual are not meant to cover all possible conditions and situations that may occur. It must be understood that common sense, caution, and care are factors, which cannot be built into any product. These factors must be supplied by the person(s) caring for and operating this equipment.

**ONLY YOU CAN PREVENT ACCIDENTS!**

## ROLL-N-GO SPECIFICATIONS AND STANDARD FEATURES

<b>WARRANTY</b>	5 Years Limited Warranty
<b>ENGINE HP</b>	13HP Honda, Electric Start
<b>FUEL TANK</b>	6-Gallon
<b>BATTERY</b>	12 Volt
<b>COOLING</b>	Cooling Fan - Std.
<b>DRIVE ROLLERS</b>	2 - Oscillating steel rollers, both driven for positive traction. 1-1/4" roll mounting bearing. Diameter 10-3/4", 36" long with beveled ends & scrapers.
<b>STEERING</b>	13-1/4" Diameter, automotive type tilt steering wheel. 13-1 ratio. Both rolls articulate and oscillate to smooth the surface without changing the undulations designed into the green.
<b>SEAT</b>	Molded cushion with protective edge trim, neutral safety switch & forward/reverse adjustment.
<b>VIBRATION</b>	Reduced through rubber mounts on engine and seat.
<b>SPEED</b>	11 MPH, Approximately
<b>GROUND PRESSURE</b>	Without water, 10 lbs. P.S.I., with water, add 200 lbs., or 1.4 P.S.I.
<b>TIRE/WHEEL ASSYS.</b>	8.5 x 8.5-8, 6 Ply, Turf Tires (2)
<b>SWATH</b>	36"
<b>OPTIONS</b>	Light Kit, Brush Kit, Inner Spike Air Kit, Rotary Brush System
Specifications & Options Subject to Change Without Notice	
REV. 6/2015	

## MACHINE REGISTRATION

MANUFACTURED BY:

SALSCO, INC.  
105 School House Rd., Cheshire, CT 06410  
800-872-5726, 203-271-1682, 203-271-2596 (Fax)  
[sales@salsco.com](mailto:sales@salsco.com) [www.salsco.com](http://www.salsco.com)

THIS MANUAL COVERS MODEL (s): 0009101

This company reserves the right to discontinue, add improvements to, or change the design of any model or product at any time without obligation to improve existing machines, either by changing the design or adding new parts.

It has been and will continue to be the policy of SALSCO to update existing machines at its own discretion. Whenever possible, new designs will be made in such a way that they can be "Retro Fit" if so desired.

Record in the space provided below the model and serial number of this unit. Please retain these numbers for future reference.

**NO PARTS ORDERS** will be accepted **WITHOUT MODEL NUMBERS OR PART NUMBERS.** All part numbers are listed in this manual.

\_\_\_\_\_

Serial Number

\_\_\_\_\_

Model Number

NOTE: Be sure to complete your warranty card. This will insure immediate processing of any warranty claims.

**READ AND UNDERSTAND THIS MANUAL BEFORE STARTING THE MACHINE**

1/06

# Mobil

## Mobil 1™ 15W-50

### Advanced Full Synthetic Engine Oil

#### Product Description

Mobil 1™ 15W-50 is an advanced full synthetic engine oil designed to help provide exceptional wear protection for a smooth driving experience. Mobil 1 15W-50 meets or exceeds the requirements of the industry and car manufacturers' standards required for high-performance turbo-charged, supercharged gasoline and diesel multi-valve fuel injected engines. Mobil 1 15W-50 is a winning, race-proven technology. It is especially suited for a wide variety of motorsports applications, towing, and other severe service situations. Mobil 1 15W-50 helps to provide outstanding engine oil performance and protection for the winning edge. Mobil 1 is the official motor oil of NASCAR.

#### Features and Potential Benefits

Mobil 1 15W-50 is made with a proprietary blend of ultra high performance synthetic basestocks fortified with a precisely balanced component system. Mobil 1 15W-50's heavier viscosity together with this high-performance component system helps to provide the ultimate in dynamic lubricant protection. This feature is supported, not only by meeting or exceeding the toughest industry performance standards, but also it is proven in gruelling racing applications. Key features and potential benefits include:

Features	Advantages and Potential Benefits
Advanced Full synthetic formula	Helps prevent deposits and sludge build-up to enable long engine life Excellent overall lubrication and wear protection performance for many driving styles
Outstanding thermal and oxidation stability	Outstanding performance during the maximum oil change interval recommended in a vehicle's owners manual
Extra anti-wear additive	Extra protection for severe service

#### Applications

Mobil 1 15W-50 is recommended for all types of vehicles, suitable for use in high-performance turbo-charged, supercharged gasoline and diesel multi-valve fuel injected engines found in passenger cars, light vans and trucks.

- Mobil 1 15W-50 is suitable extreme engine stress conditions, where conventional oil often may not perform.
- Mobil 1 15W-50 is not recommended for 2-Cycle or aviation engines, unless specifically approved by the manufacturer.

#### Specifications and Approvals

Mobil 1 15W-50 meets or exceeds the requirements of:	
API	SN, SM, SL, SJ
ACEA	A3/B3

---

According to ExxonMobil, Mobil 1 15W-50 is of the following quality level:

---

API CF

---

### Typical Properties

Mobil 1 15W-50	
SAE Grade	15W-50
Viscosity @ 100°C, cSt (ASTM D445)	18
Viscosity @ 40°C, cSt (ASTM D445)	125
Viscosity Index	160
Sulfated Ash, wt% (ASTM D874)	1.21
HTHS Viscosity, mPa·s @ 150°C (ASTM D4683)	4.5
Pour Point, °C (ASTM D97)	-39
Flash Point, °C (ASTM D92)	232
Density @15.6° C g/ml ASTM D4052)	0.87

### Health and Safety

Based on available information, this product is not expected to produce adverse effects on health when used for the intended application and the recommendations provided in the Material Safety Data Sheet (MSDS) are followed. MSDS's are available upon request through your sales contract office, or via the Internet. This product should not be used for purposes other than its intended use. If disposing of used product, take care to protect the environment.

Mobil, Mobil 1 and the Pegasus design are trademarks of Exxon Mobil Corporation, or one of its subsidiaries.

1-2013

Exxon Mobil Corporation  
3225 Gallows Road  
Fairfax, VA 22037

1-800-ASK MOBIL (275-6624)

Typical Properties are typical of those obtained with normal production tolerance and do not constitute a specification. Variations that do not affect product performance are to be expected during normal manufacture and at different blending locations. The information contained herein is subject to change without notice. All products may not be available locally. For more information, contact your local ExxonMobil contact or visit [www.exxonmobil.com](http://www.exxonmobil.com). ExxonMobil is comprised of numerous affiliates and subsidiaries, many with names that include Esso, Mobil, or ExxonMobil. Nothing in this document is intended to override or supersede the corporate separateness of local entities. Responsibility for local action and accountability remains with the local ExxonMobil-affiliate entities.

Copyright © 2001-2013 Exxon Mobil Corporation. All rights reserved.

## OPERATING INSTRUCTIONS

### 1. BEFORE STARTING ENGINE:

- a. Look Over the machine
  - i. Make sure it is free of any outside objects, and nothing is in the way of it moving when it is running.
- b. Look over all hydraulic hoses
  - i. Make sure **no hoses are rubbing or in a position to rub.**
  - ii. Carefully inspect to be sure there are no hydraulic leaks.
- c. Check the chain slack
  - i. Reach under the machine to feel the free play in the drive chains. **Proper chain slack should be 1/4" – 3/8".**
  - ii. Should the chains need adjusting, use the following **chain adjustment procedure:**
    1. Loosen the motor mounting bolts.
    2. Adjust the pusher bolt under the hydraulic motor which will cause the motor to move and tighten the chain.
    3. Keep in mind proper chain slack should be 1/4" to 3/8".
    4. Once proper slack is achieved, tighten the two motor mounting bolts and tighten the jam nut on the adjusting bolt.

### 2. CHECK THE FUEL LEVEL: (Caution: **NEVER** put fuel in a hot motor.)

- a. Remember to only fill the fuel tank to the bottom of the fuel screen inside the tank.

### 3. BE SURE THE FUEL ON-OFF IS IN THE FUEL ON POSITION:

- a. Be sure the choke slide is in the "Choke on Position".
- b. Put the "On-Off" switch to the On position.
- c. Turn the key and start the engine.
- d. Move the choke to the "Choke Off Position".
- e. Move the throttle to just above an idle.

### 4. CLIMB ON THE MACHINE:

- a. **Adjust the seat slide** so that both feet can be **heel on floor, toe on pedal.**
- b. Adjust tilt steering wheel to operator comfort.

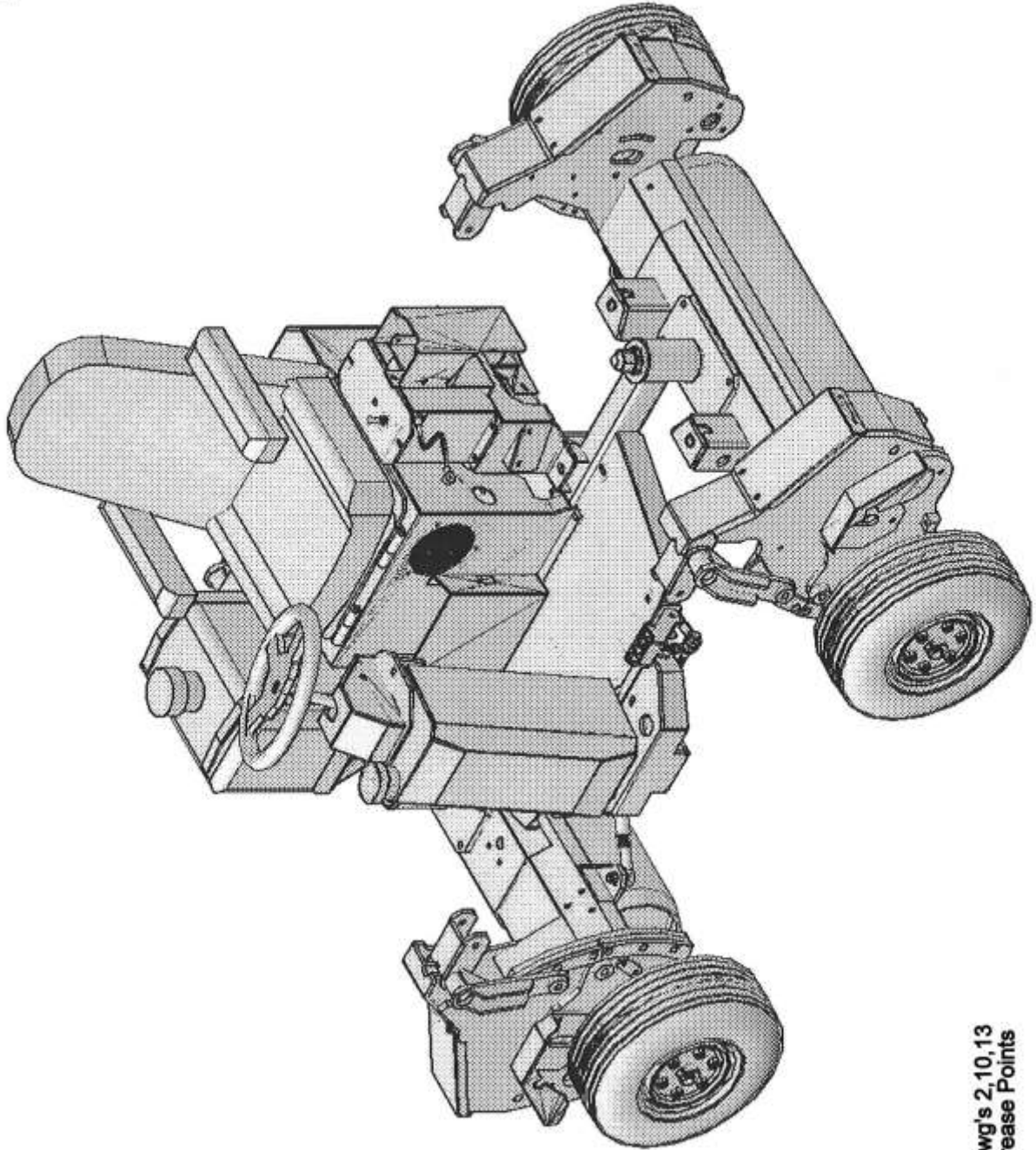
### 5. RAISE-LOWER THE MACHINE:

- a. **For the Roll-N-Go, Hydraulic** unit Raise/Lower by moving the handle on the control valve.
- b. **For the Roll-N-Go, EHA,** electric over hydraulic unit, press and hold the switch till the machine either raises or lowers fully.

### 6. MOVE THE MACHINE:

- a. When you depress the **right pedal** the machine will **move right.** When you press the **left pedal** the machine will **move left.**
- b. These **pedals** not only cause the machine to move, they **also hydraulically stop the machine.**

ISSUED: 03-25-2013

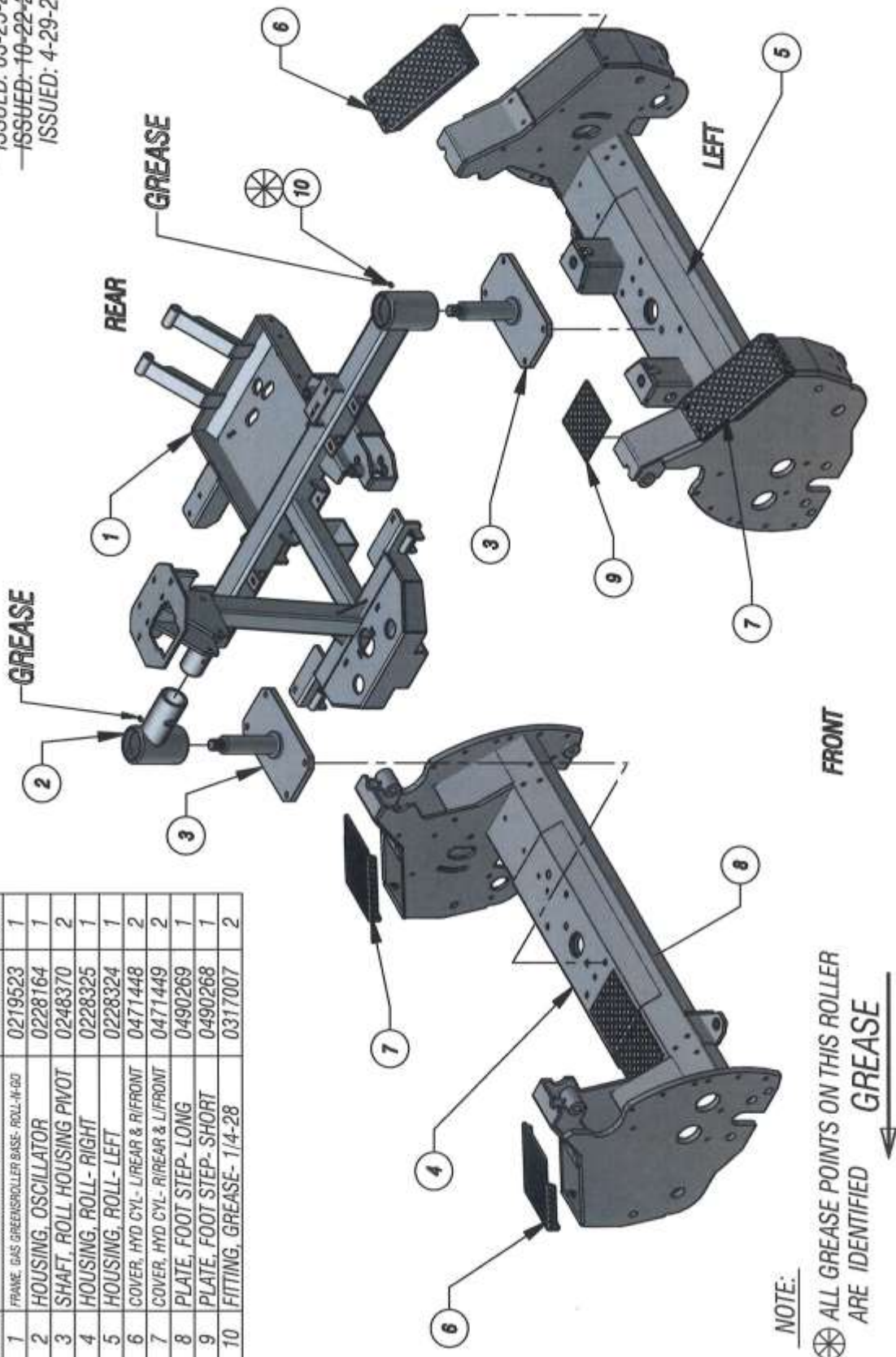


See Dwg's 2,10,13  
For Grease Points

GAS GREENS ROLLER ROLL-N-GO DWG #1

ISSUED: 03-25-2013  
 ISSUED: 10-22-2013  
 ISSUED: 4-29-2015

ITEM	DESCRIPTION	DWG NO	QTY
1	FRAME, GAS GREENSROLLER BASE, ROLL-N-GO	0219523	1
2	HOUSING, OSCILLATOR	0228164	1
3	SHAFT, ROLL HOUSING PIVOT	0248370	2
4	HOUSING, ROLL - RIGHT	0228325	1
5	HOUSING, ROLL - LEFT	0228324	1
6	COVER, HYD CYL- L/REAR & R/FRONT	0471448	2
7	COVER, HYD CYL- R/REAR & L/FRONT	0471449	2
8	PLATE, FOOT STEP- LONG	0490269	1
9	PLATE, FOOT STEP- SHORT	0490268	1
10	FITTING, GREASE- 1/4-28	0317007	2

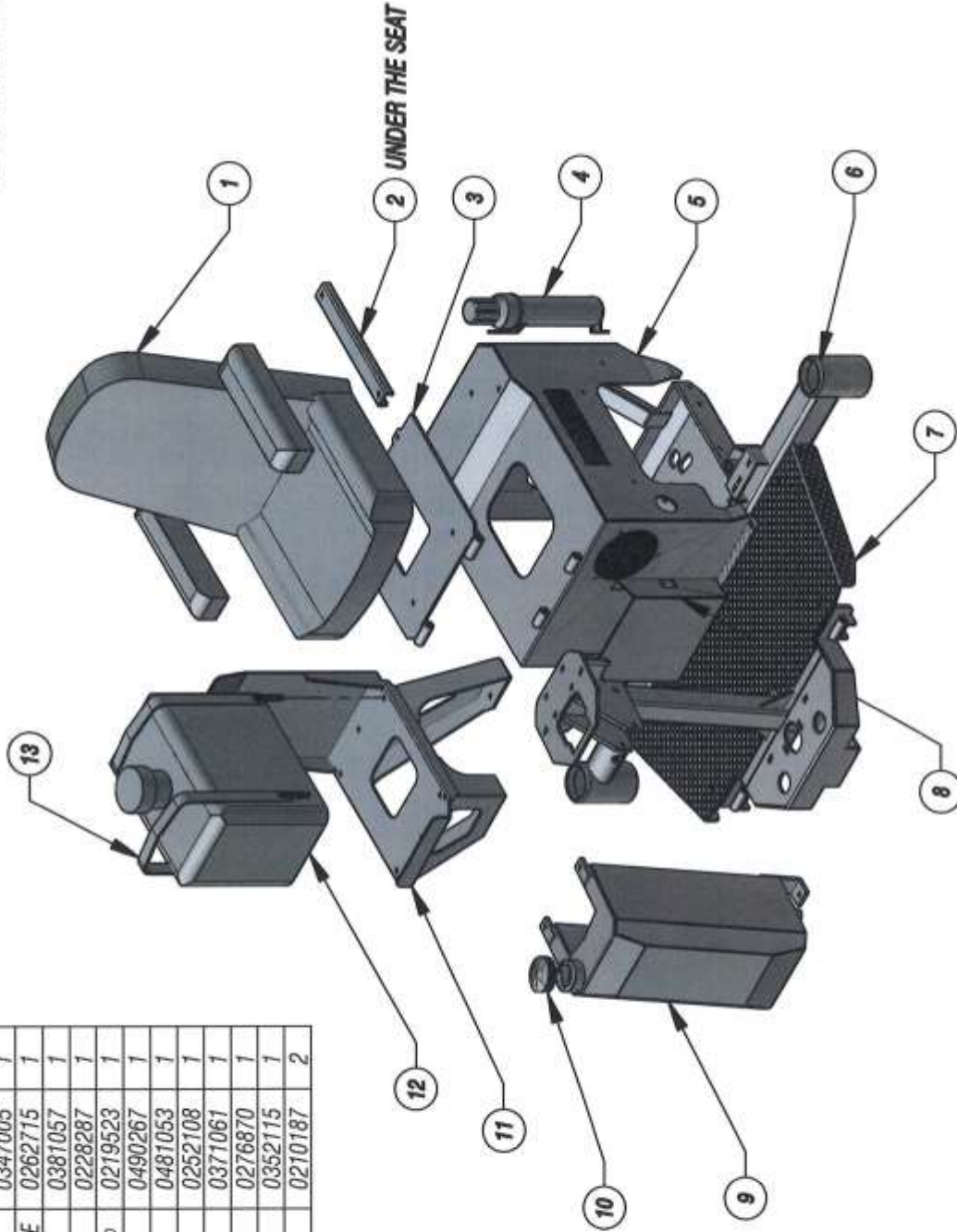


GAS GREENS ROLLER ROLL-N-GO DWG #2

NOTE:  
 ALL GREASE POINTS ON THIS ROLLER  
 ARE IDENTIFIED BY GREASE  
 FITTINGS  
 TOTAL OF 22 GREASE FITTINGS

ISSUED: 03-25-2013  
 ISSUED: 4-29-2015

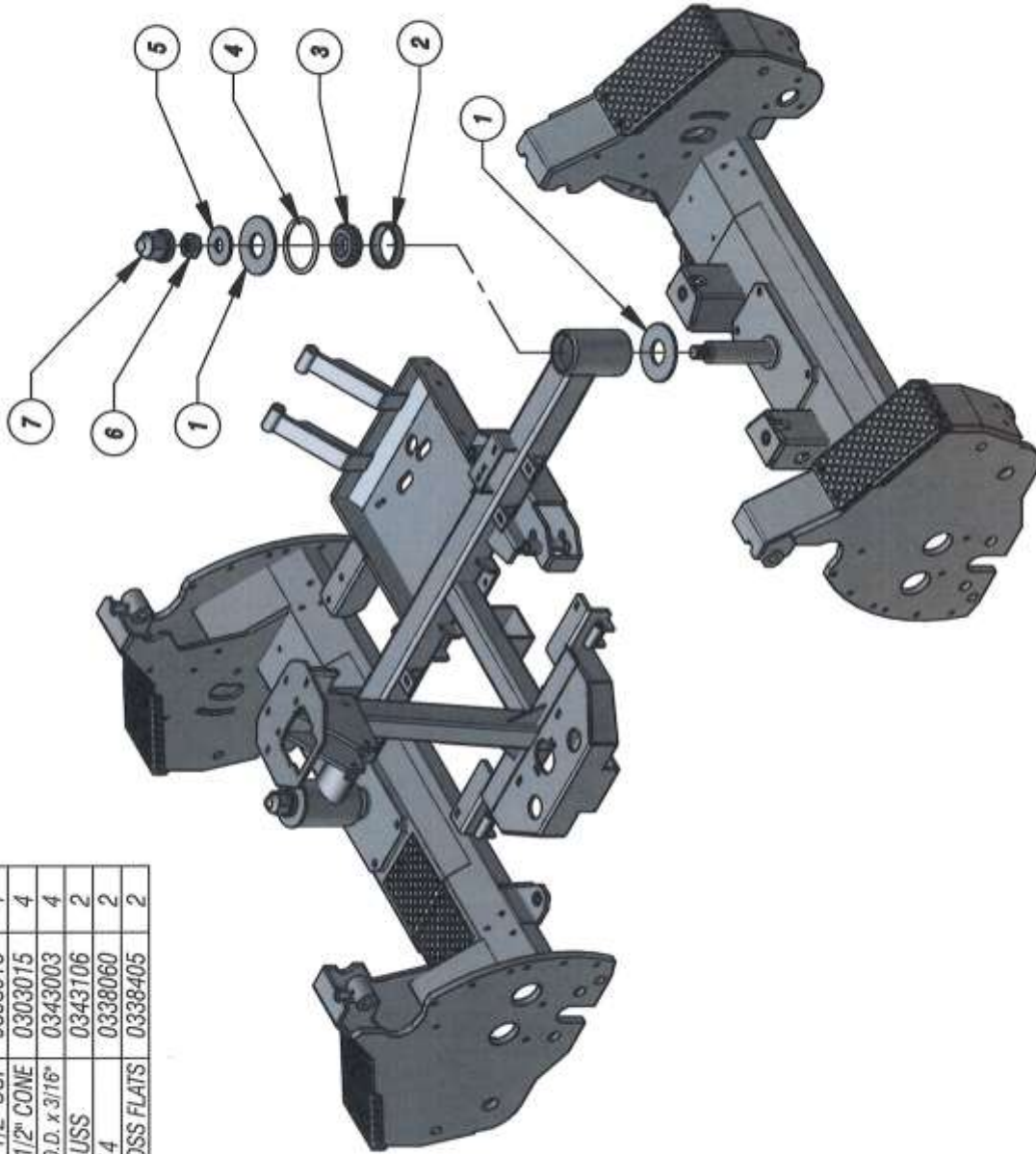
ITEM	DESCRIPTION	DWG NO	QTY
1	SEAT WITH ARM REST	0347010	1
2	SLIDE ASSY KIT (FOR SEAT)	0347005	1
3	PLATE, SEAT MOUNT & HINGE	0262715	1
4	HOLDER, MANUAL	0381057	1
5	HOUSING, ENGINE	0228287	1
6	FRAME, GAS GREENSROLLER BASE, ROLL-IN-50	0219523	1
7	PLATE, FLOOR	0490267	1
8	HOLDER, CLIPBOARD	0481053	1
9	TANK, HYD OIL	0252108	1
10	CAP, FILLER	0371061	1
11	MOUNT, FUEL TANK	0276870	1
12	FUEL TANK	0352115	1
13	CLAMP, 6 GAL. FUEL TANK	0210187	2



GAS GREENS ROLLER ROLL-N-GO DWG #3

ISSUED: 03-25-2013  
 ISSUED: 4-29-2015

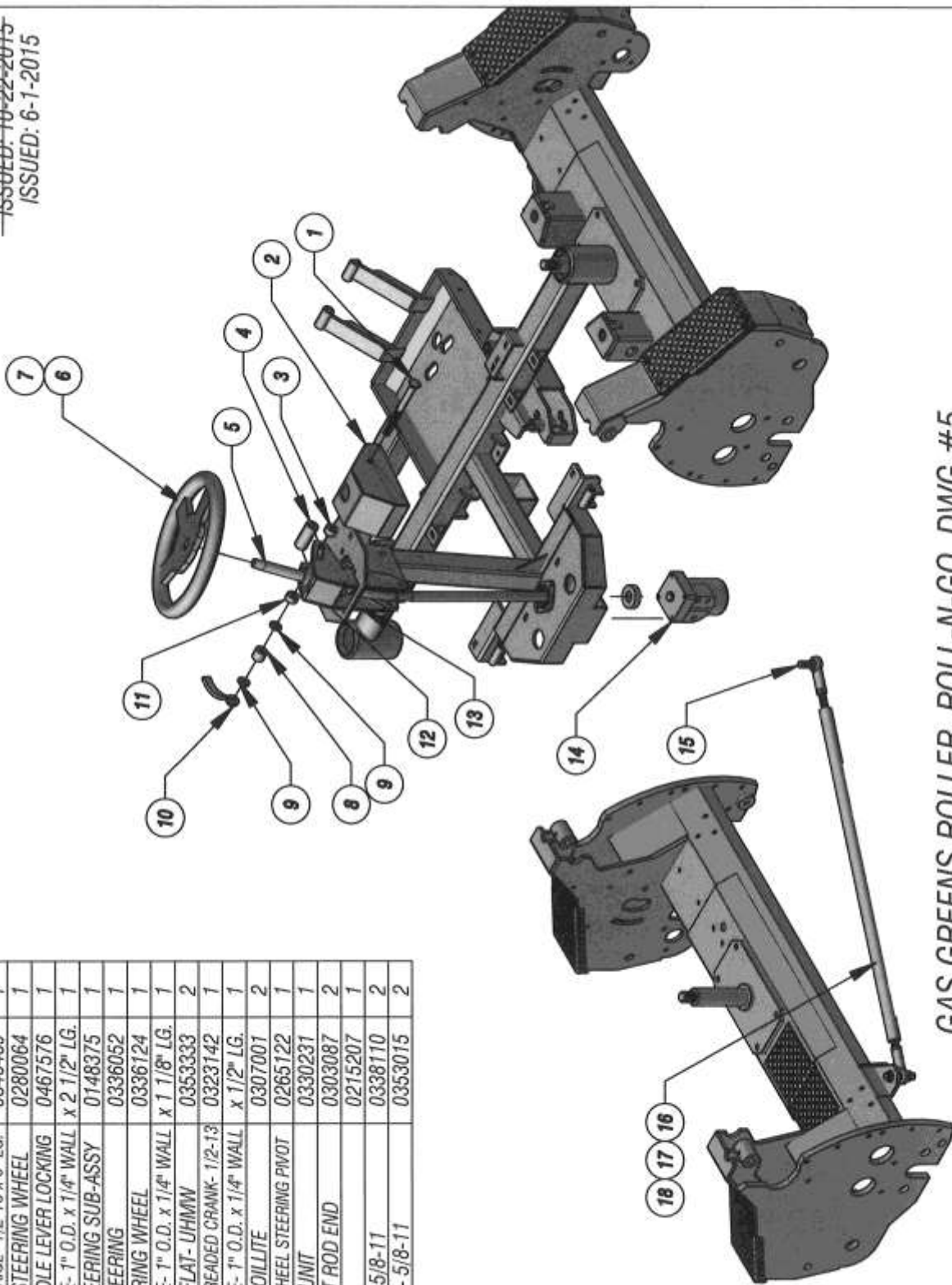
ITEM	DESCRIPTION	DWG NO	QTY
1	WASHER, FLAT PUNCHED- 1.8125" O.D. x 3.1125" O.D. x .118"	0453117	4
2	BEARING, ROLLER- 1 1/2" CUP	0303016	4
3	BEARING, ROLLER- 1 1/2" CONE	0303015	4
4	O-RING, 3" I.D. x 3.318" O.D. x 3/16"	0343003	4
5	WASHER, FLAT- 3/4" USS	0343106	2
6	NUT, HEX JAM- 7/8-14	0338060	2
7	CAP, NUT- 5/16" ACROSS FLATS	0338405	2



GAS GREENS ROLLER ROLL-N-GO DWG #4

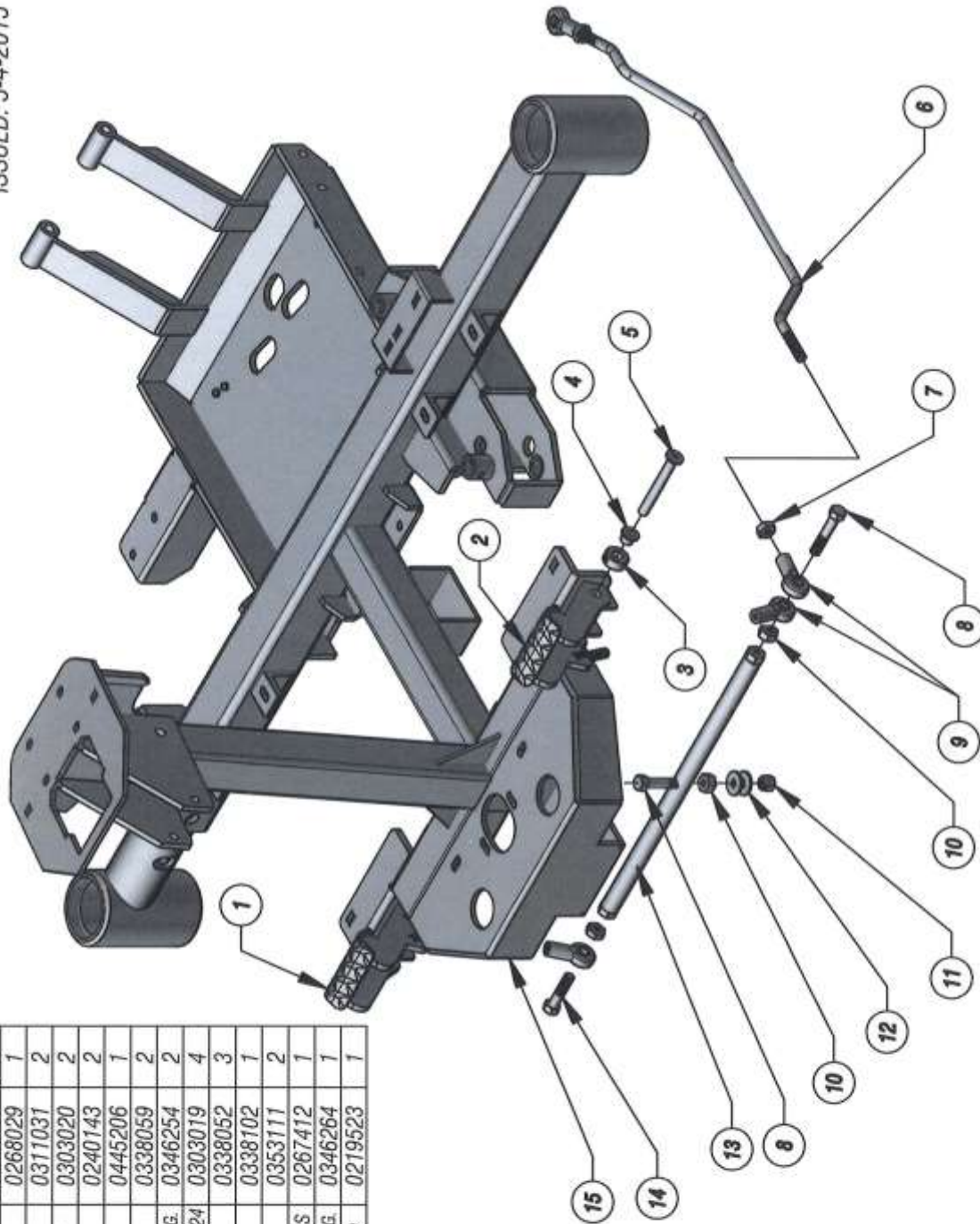
ISSUED: 03-25-2013  
 ISSUED: 10-22-2015  
 ISSUED: 6-1-2015

ITEM	DESCRIPTION	DWG NO	QTY
1	BOLT, CARRIAGE- 1/2-13 x 6" LG.	0346469	1
2	BOX, TILT STEERING WHEEL	0280064	1
3	TUBE, HANDLE LEVER LOCKING	0467576	1
4	D.O.M. TUBE- 1" O.D. x 1/4" WALL x 2 1/2" LG.		1
5	SHAFT, STEERING SUB-ASSY	0148375	1
6	WHEEL, STEERING	0336052	1
7	CAP, STEERING WHEEL	0336124	1
8	D.O.M. TUBE- 1" O.D. x 1/4" WALL x 1 1/8" LG.		1
9	WASHER, FLAT- UHMW	0353333	2
10	HANDLE- THREADED CRANK- 1/2-13	0323142	1
11	D.O.M. TUBE- 1" O.D. x 1/4" WALL x 1/2" LG.		1
12	BUSHING, OILLITE	0307001	2
13	ARM, TILT WHEEL STEERING PIVOT	0265122	1
14	STEERING UNIT	0330231	1
15	BALL JOINT ROD END	0303087	2
16	TIE ROD	0215207	1
17	NUT, JAM- 5/8-11	0338110	2
18	NUT, LOCK- 5/8-11	0353015	2



GAS GREENS ROLLER ROLL-N-GO DWG #5

ISSUED: 03-25-2013  
 ISSUED: 5-4-2015

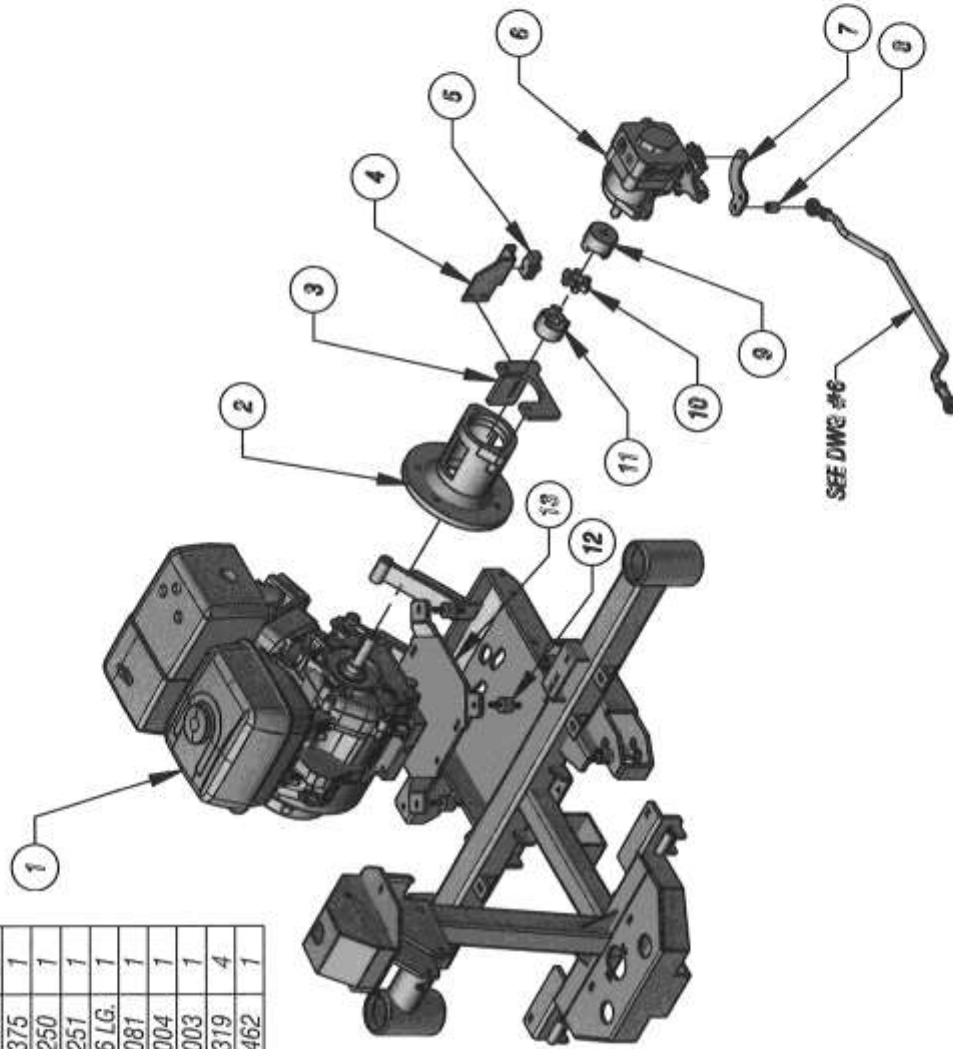


ITEM	DESCRIPTION	DWG NO	QTY
1	PEDAL, FOOT- RIGHT	0268028	1
2	PEDAL, FOOT- LEFT	0268029	1
3	COLLAR, SET	0311031	2
4	BUSHING, FLANGED OILITE	0303020	2
5	PIN, FOOT PEDAL PIVOT	0240143	2
6	ROD, FORWARD REVERSE	0445206	1
7	NUT, HEX JAM- 3/8-24	0338059	2
8	BOLT, HEAVY HEX- 3/8-16 x 2 1/4" LG.	0346254	2
9	BEARING, SWIVEL ROD END- 3/8-24	0303019	4
10	NUT, HEX JAM- 3/8-16	0338052	3
11	NUT, HEX- NYLOCK 3/8-16	0338102	1
12	WASHER, FLAT- 3/8 U.S.S.	0353111	2
13	TUBE, FORWARD REVERSE PEDALS	0267412	1
14	BOLT, HEAVY HEX- 3/8-16 x 1 3/4" LG.	0346264	1
15	FRAME, GAS GREENROLLER BASE- ROLL-N-GO	0219523	1

GAS GREENS ROLLER ROLL-N-GO DWG #6

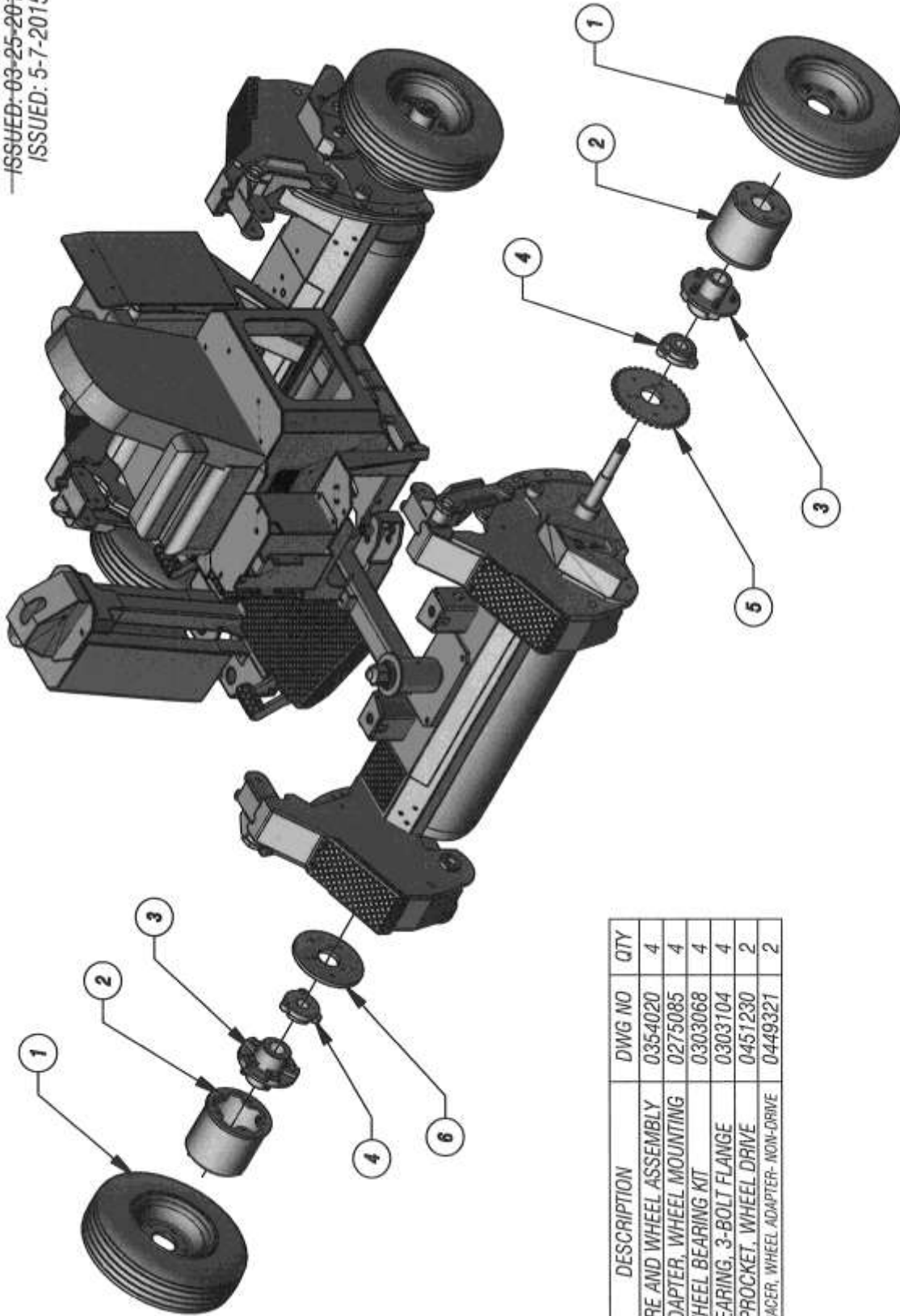
ISSUED: 03-25-2013  
 ISSUED: 10-16-2013  
 ISSUED: 5-5-2015

ITEM	DESCRIPTION	DWG NO	QTY
1	ENGINE, 13HP HONDA	0337033	1
2	HOUSING, BELL CAST PUMP MOUNTING	0328059	1
3	SUPPORT, HYDRAULIC PUMP	0477231	1
4	BRACKET, NEUTRAL SWITCH MOUNTING	0488046	1
5	SWITCH, SNAP ACTION- 15 AMP	0315375	1
6	PUMP, HYDRAULIC- w/ AUXILIARY PUMP	0330250	1
7	LEVER, HYDRAULIC PUMP- BEAR DRIVE	0433251	1
8	D.O.M. TUBE- 3/8" I.D. x 5/8 O.D. x 11/16 LG.	0313081	1
9	COUPLING, HUB 17mm BORE	0313081	1
10	COUPLING, SPIDER	0313004	1
11	COUPLING, HUB 1" BORE	0313003	1
12	MOUNT, VIBRATION CONTROL	0376319	4
13	PLATE, ENGINE MOUNT	0462462	1



GAS GREENS ROLLER ROLL-N-GO DWG #7

ISSUED: 03-25-2013  
 ISSUED: 5-7-2015



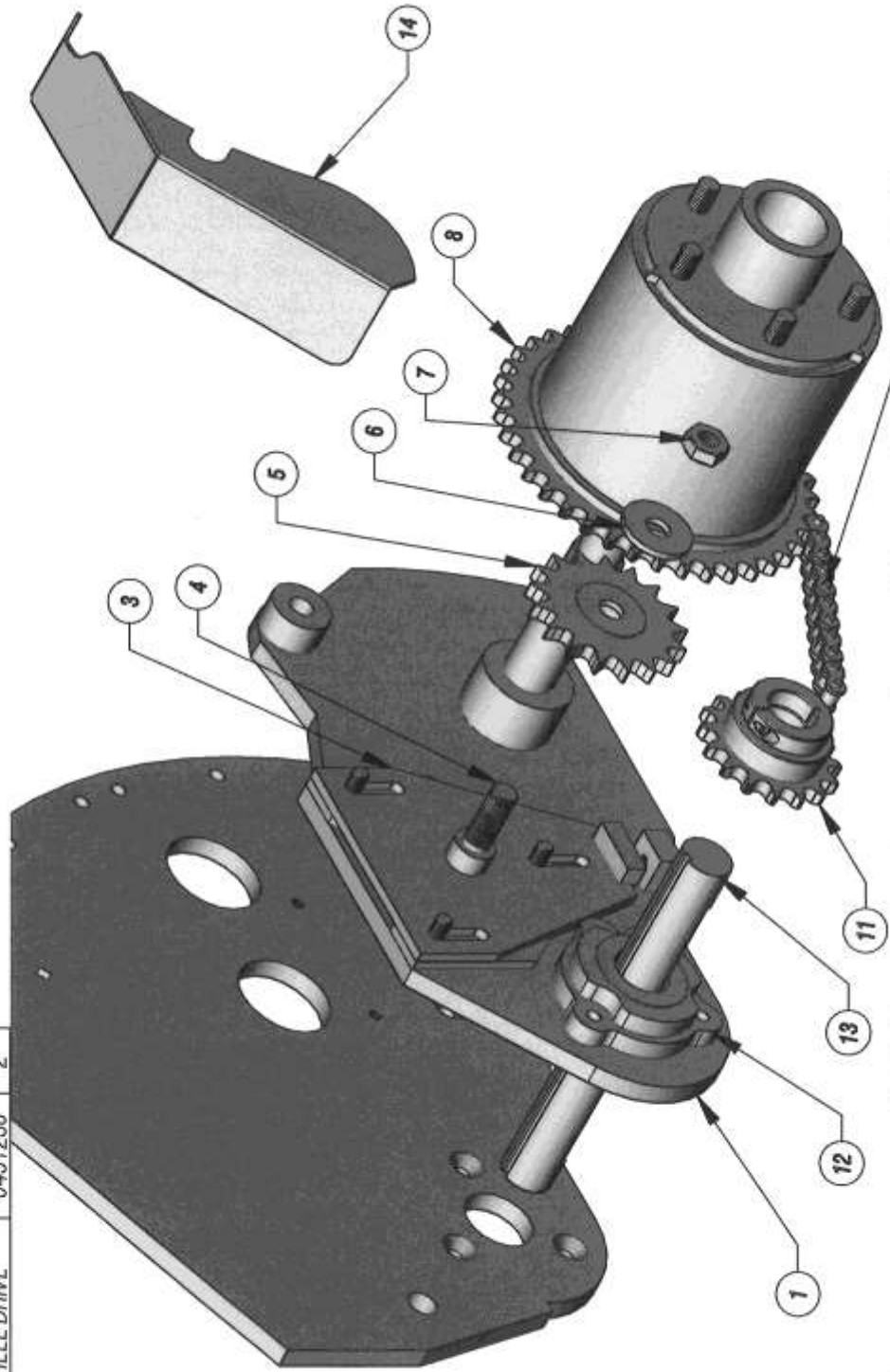
ITEM	DESCRIPTION	DWG NO	QTY
1	TIRE AND WHEEL ASSEMBLY	0354020	4
2	ADAPTER, WHEEL MOUNTING	0275085	4
3	WHEEL BEARING KIT	0303068	4
4	BEARING, 3-BOLT FLANGE	0303104	4
5	SPROCKET, WHEEL DRIVE	0451230	2
6	SPACER, WHEEL ADAPTER- NON-DRIVE	0449321	2

GAS GREENS ROLLER ROLL-N-GO DWG #8

~~ISSUED: 03-25-2013~~  
~~ISSUED: 8-13-2013~~  
ISSUED: 5-12-2015

ITEM	DESCRIPTION	DWG NO	QTY
9	ROLLER CHAIN- #50- 61 PITCHES	0309024	2
10	MASTERLINK- #50 CHAIN	0309008	2
11	SPROCKET- #50BS16	0251245	2
12	BEARING, 3-BOLT FLANGE	0303104	4
13	SHAFT, IDLER- DRIVE SIDE	0448377	2
14	GUARD, CHAIN- LEFT	0221642	1
15	GUARD, CHAIN- RIGHT	0221640	1

ITEM	DESCRIPTION	DWG NO	QTY
1	ARM, WHEEL PIVOT MOUNTING- LEFT REAR	0265157	1
2	ARM, WHEEL PIVOT MOUNTING- RIGHT REAR	0265155	1
3	ADJUSTER, IDLER TENSION	0201077	2
4	HEX HEAD CAP SCREW- 5/8-11 x 2 1/2" LG.	0346518	2
5	SPROCKET- #50BB17H	0351107	2
6	WASHER, FLAT- 5/8" SAE	0353110	2
7	NUT, HEX NYLOCK- THIN- 5/8-11	0338113	2
8	SPROCKET, WHEEL DRIVE	0451230	2



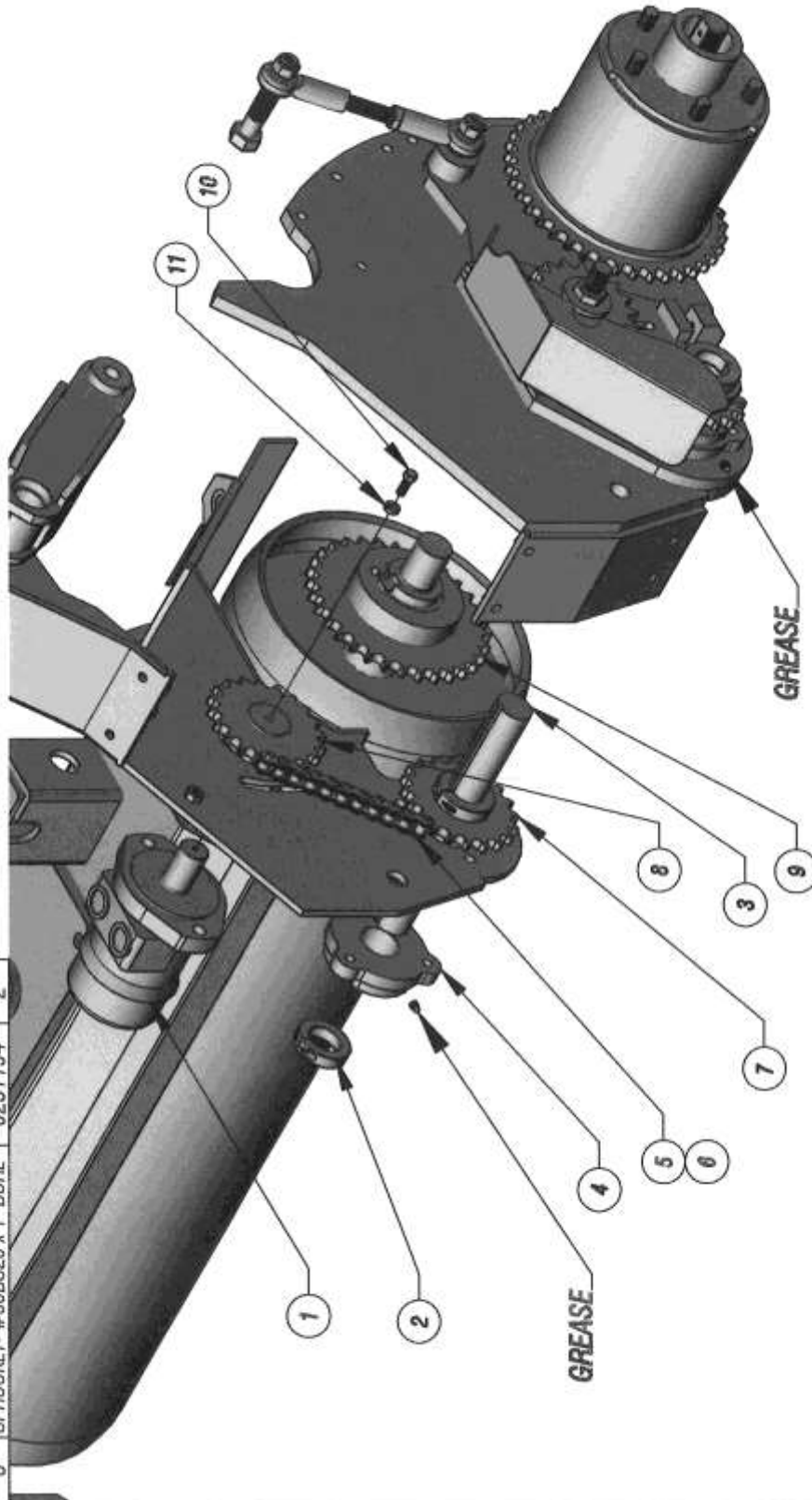
**GAS GREENS ROLLER ROLL-N-GO DWG #9**

NOTES:  
-LEFT REAR AS SHOWN  
-PARTS #2 AND #15 ARE MIRROR VERSIONS OF  
PARTS #1 AND #14 AND ARE LOCATED ON RIGHT REAR

ISSUED: 03-25-2013  
 ISSUED: 10-22-2013  
 ISSUED: 5-13-2015

ITEM	DESCRIPTION	DWG NO	QTY
9	SPROCKET- #50BTB32	0351212	2
10	HHCS- 1/4-20 x 1/2" LG.	0346004	2
11	WASHER, LOCK- 1/4" B146 SPLIT	0353001	2

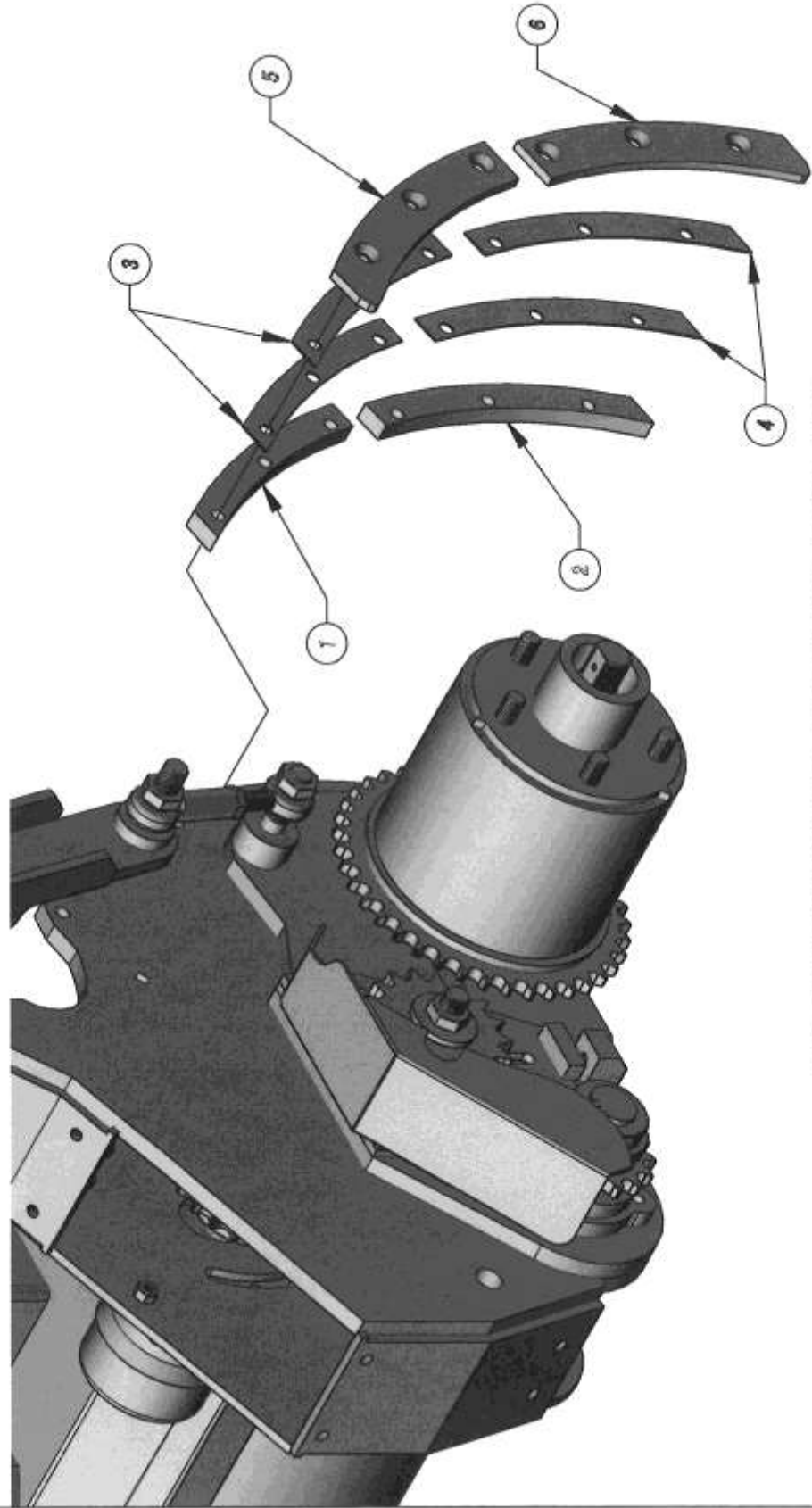
ITEM	DESCRIPTION	DWG NO	QTY
1	MOTOR, HYDRAULIC	0330139	2
2	COLLAR, SPLIT- 1 1/4" I.D.	0311020	2
3	SHAFT, IDLER- DRIVE SIDE	0448377	2
4	BEARING, 3-BOLT FLANGE	0303104	4
5	ROLLER CHAIN- #50 x 65 PITCHES	0309095	2
6	MASTER LINK- #50 CHAIN	0309008	2
7	SPROCKET- #50BS20 x 1 1/4" BORE	0251227	2
8	SPROCKET- #50BS20 x 1" BORE	0251194	2



GAS GREENS ROLLER ROLL-N-GO DWG #10

ISSUED: 03-25-2013  
 ISSUED: 5-13-2015

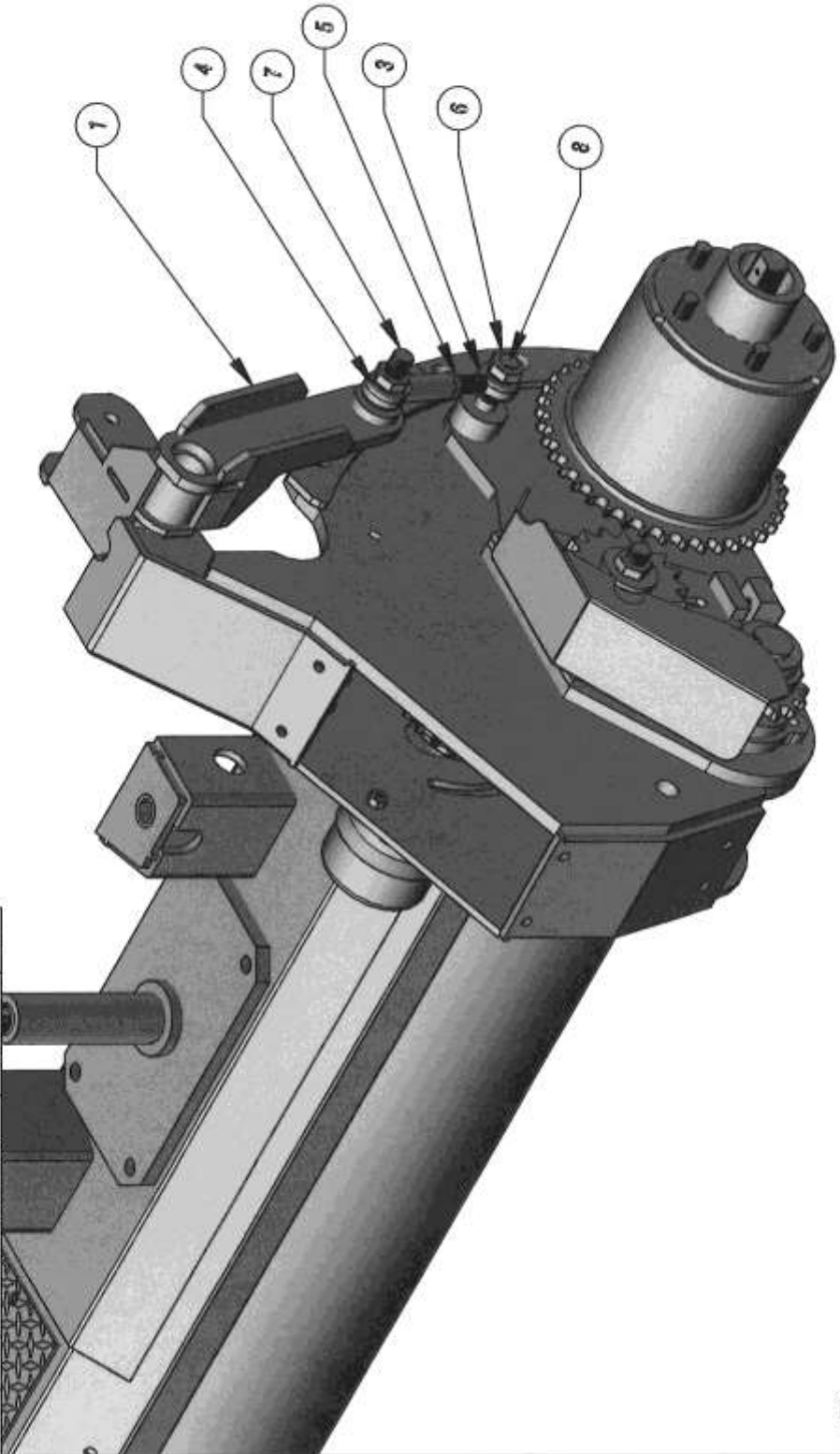
ITEM	DESCRIPTION	DWG NO	QTY
1	SPACER, WHEEL PIVOT MOUNTING ARM- TIP- UPPER	0449317	4
2	SPACER, WHEEL PIVOT MOUNTING ARM- TIP- LOWER	0449319	4
3	SPACER, WHEEL PIVOT MOUNTING ARM- 20GA. UPPER	0449316	8
4	SPACER, WHEEL PIVOT MOUNTING ARM- 20GA. LOWER	0449318	8
5	GUIDE, WHEEL PIVOT MOUNTING ARM SLIDE- LEFT FACING	0422227	4
6	GUIDE, WHEEL PIVOT MOUNTING ARM SLIDE- RIGHT FACING	0422228	4



GAS GREENS ROLLER ROLL-N-GO DWG #11

ISSUED: 03-25-2013  
 ISSUED: 5-14-2015

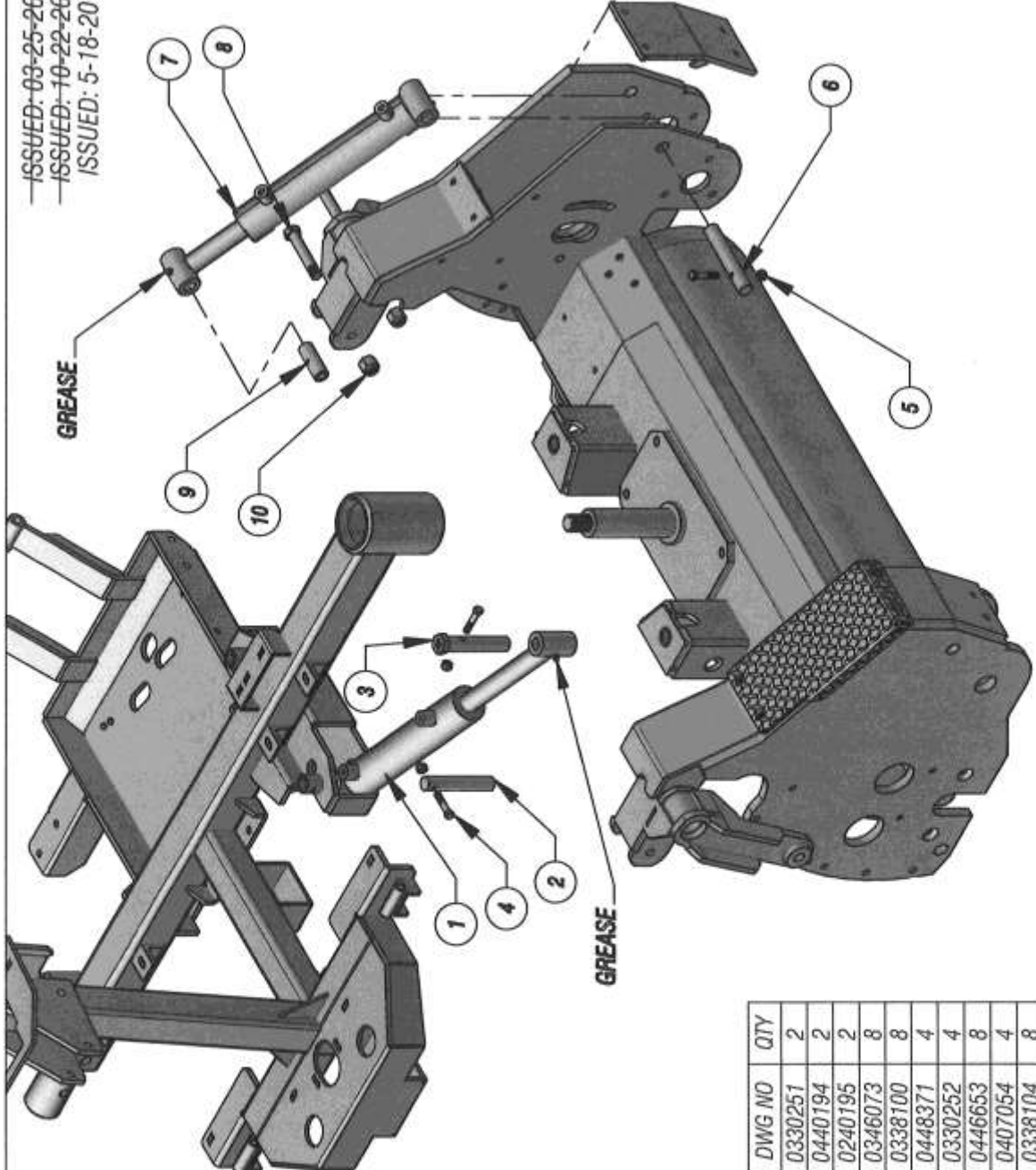
ITEM	DESCRIPTION	DWG NO	QTY
1	LEVER, CYLINDER LIFT- RF & LR	0233292	2
2	LEVER, CYLINDER LIFT- LF & RR	0233290	2
3	BALL JOINT ROD END- 5/8-18 MALE	0303091	4
4	BALL JOINT ROD END- 5/8-18 FEMALE	0303093	4
5	NUT, HEX JAM- 5/8-18	0338061	4
6	NUT, HEX NYLOCK- THIN- 5/8-11	0338113	8
7	BOLT, HEX- 5/8-11 X 2 1/4" LG.	0346521	4
8	BOLT, HEX- 5/8-11 X 2" LG.	0346517	4



GAS GREENS ROLLER ROLL-N-GO DWG #12

NOTES:  
 -LEFT REAR AS SHOWN  
 -PART #2 IS A MIRRORRED VERSION OF PART #1  
 AND IS LOCATED ON RIGHT REAR AND FRONT LEFT

ISSUED: 03-25-2013  
 ISSUED: 10-22-2013  
 ISSUED: 5-18-2015

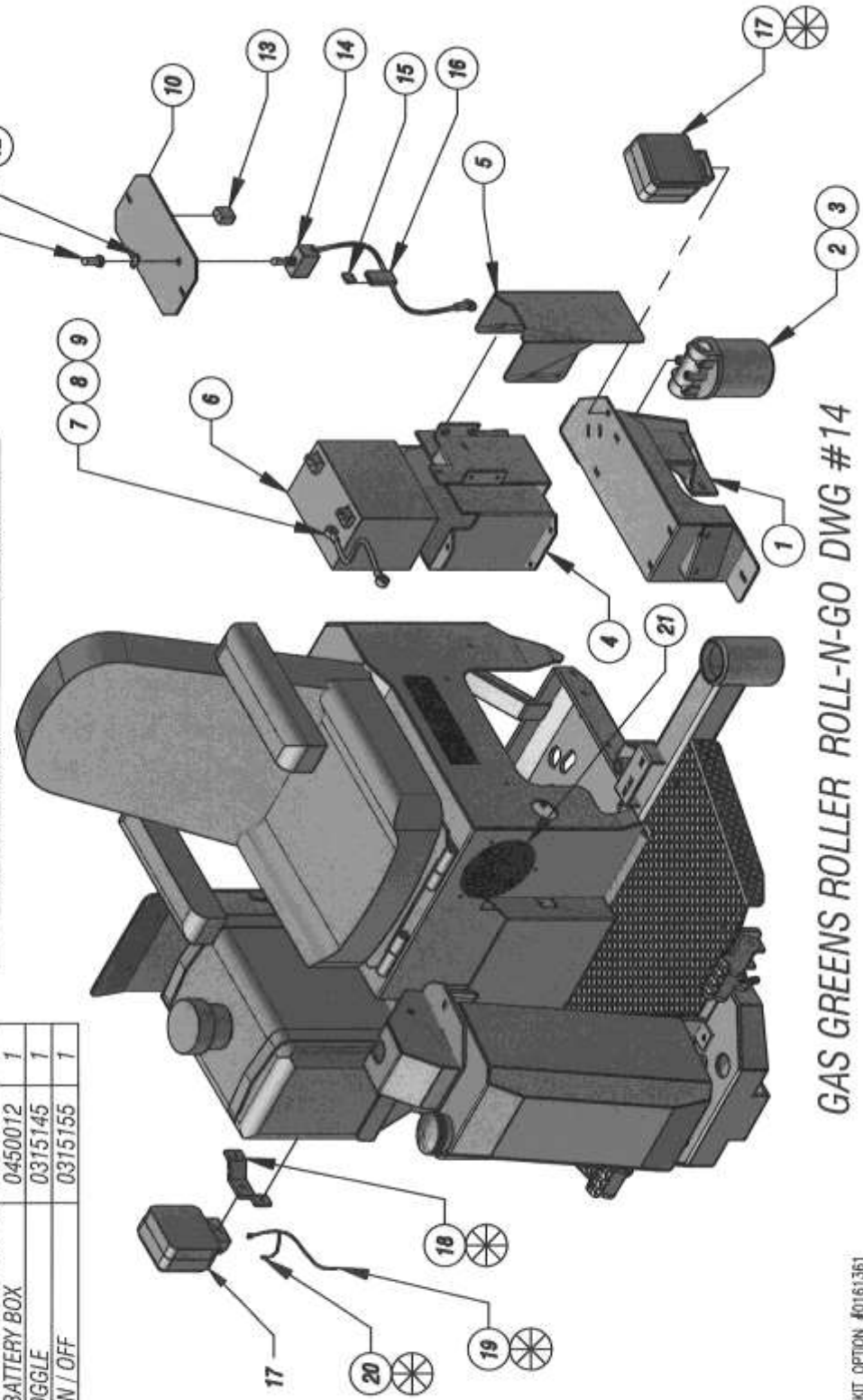


ITEM	DESCRIPTION	DWG NO	QTY
1	HYDRAULIC CYLINDER- STEERING	0330251	2
2	PIN, STEERING CYLINDER MOUNT	0440194	2
3	PIN, ROLL HOUSING STEERING CYLINDER MOUNT	0240195	2
4	HEX HEAD CAP SCREW- 1/4-20 x 1 1/2" LG.	0346073	8
5	NUT, HEX- 1/4-20	0338100	8
6	SHAFT, WHEEL LIFTING CYLINDER PIVOT- LOWER	0448371	4
7	HYDRAULIC CYLINDER- WHEEL LIFTING	0330252	4
8	BOLT, CYLINDER LIFT LEVER	0446653	8
9	BUSHING- CYLINDER LIFT LEVER PIVOT	0407054	4
10	NUT, HEX- 1/2-13	0338104	8

GAS GREENS ROLLER ROLL-N-GO DWG #13

ISSUED: 03-25-2013  
 ISSUED: 10-28-2013  
 ISSUED: 5-20-2015

ITEM	DESCRIPTION	DWG NO	QTY	ITEM	DESCRIPTION	DWG NO	QTY
1	MOUNT, BATTERY BOX & OIL FILTER	0276867	1	13	RELAY, 12 VOLT	0315409	1
2	FILTER HOUSING, HYDRAULIC OIL	0318039	1	14	SWITCH, TOGGLE	0315143	1
3	FILTER, ELEMENT	0318023	1	15	FUSE, IN LINE	0315168	1
4	BOX, BATTERY	0280069	1	16	HOLDER, FUSE	0315167	1
5	COVER, HYDRAULIC VALVE	0471450	1	17	FLOOD LIGHT, LED- RECTANGULAR	0315413	2
6	BATTERY, 12 VOLT	0336008	1	18	BRACKET, FLOOD LIGHT MOUNTING	0488153	1
7	TERMINAL, EYELET- 6 GA.	0315297	4	19	HARNES, WIRE	0315414	1
8	BATTERY CABLE, 6 GA. RED (BULK)	0315399	2	20	HEADLIGHT, PIG TAIL	0315137	1
9	BATTERY CABLE, 6 GA. BLACK (BULK)	0315006	2	21	DC ELECTRIC FAN	0315370	1
10	COVER, BATTERY BOX	0450012	1				
11	BOOT, TOGGLE	0315145	1				
12	PLATE, ON / OFF	0315155	1				



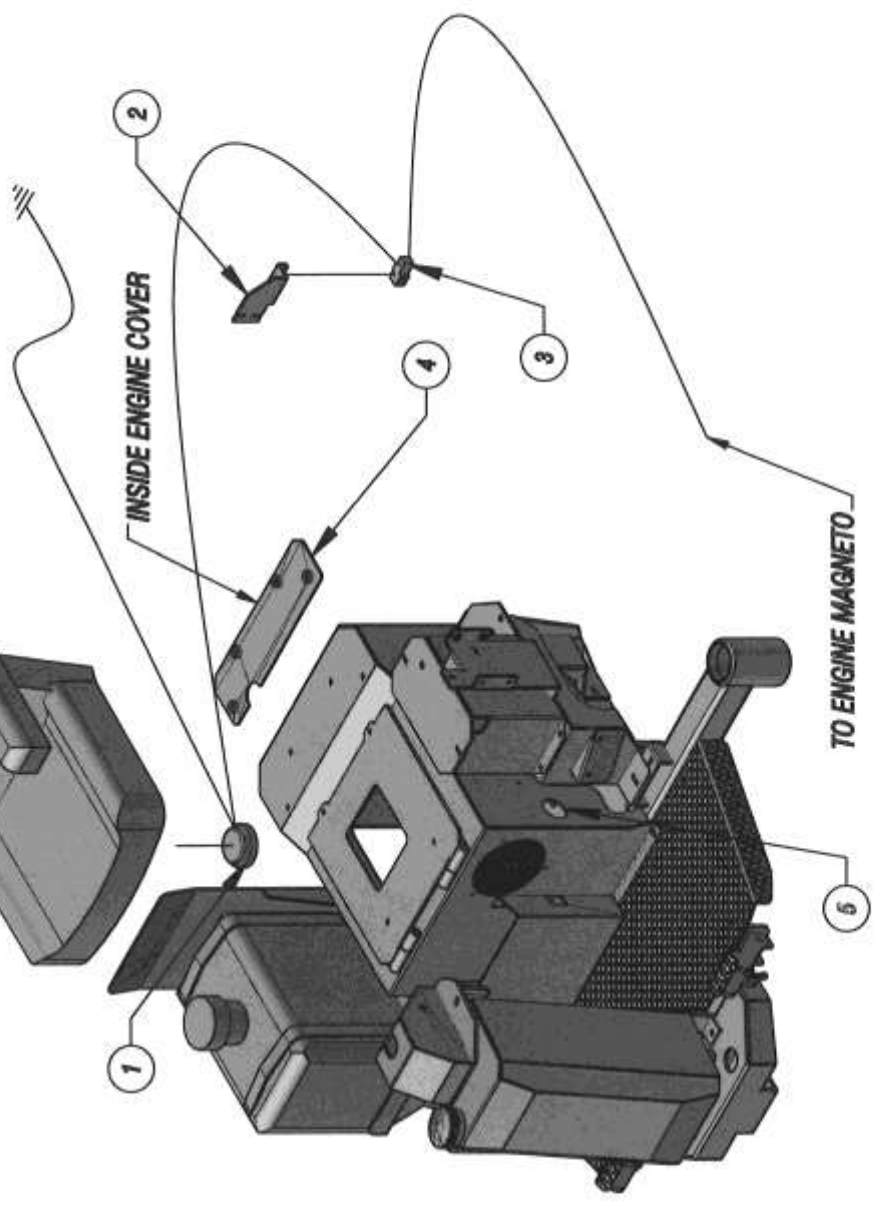
GAS GREENS ROLLER ROLL-N-GO DWG #14

NOTES:  
 PARTS OF LIGHT KIT OPTION #0161361

ISSUED: 03-25-2013  
 ISSUED: 10-20-2015  
 ISSUED: 5-26-2015

SEAT (REF. ONLY)

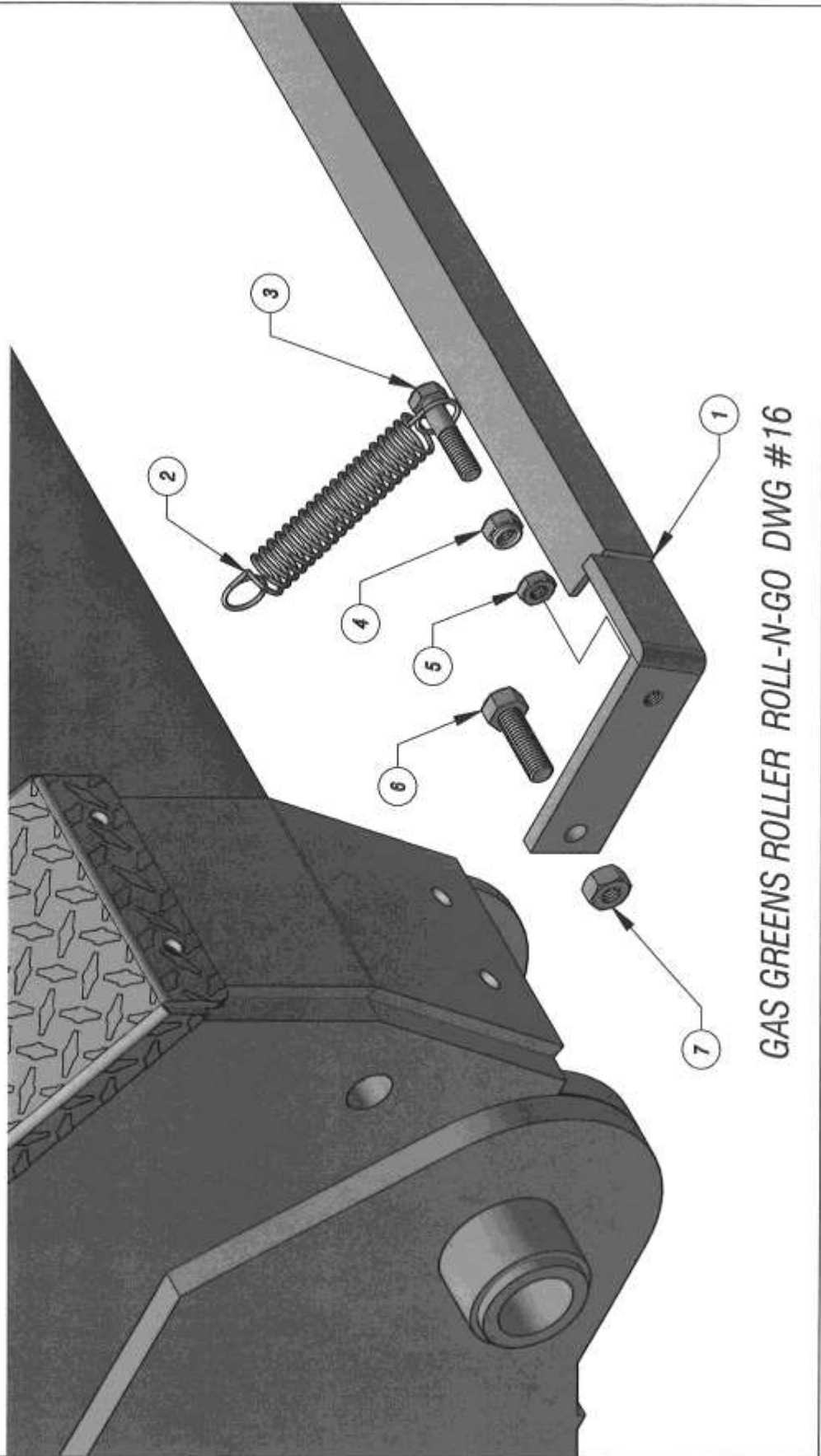
ITEM	DESCRIPTION	DWG NO	QTY
1	SWITCH, SEAT	0315397	1
2	BRACKET, NEUTRAL SWITCH MOUNTING	0488046	1
3	SWITCH, SNAP ACTION	0315375	1
4	GUARD, ENGINE HEAT SHIELD	0221644	1
5	METER, HOUR	0315369	1



GAS GREENS ROLLER ROLL-N-GO DWG #15

ISSUED: 03-25-2013  
 ISSUED: 5-27-2015

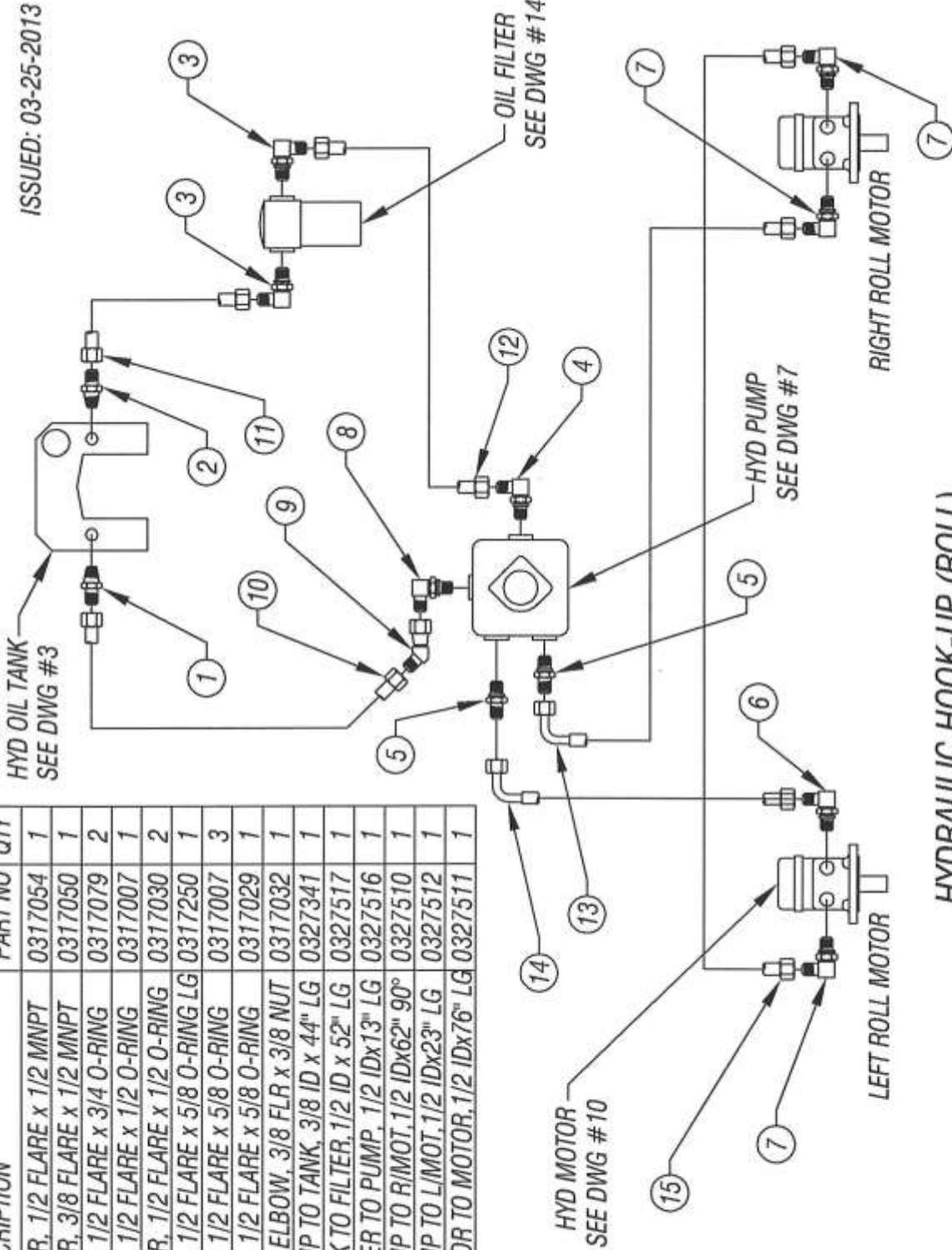
ITEM	DESCRIPTION	DWG NO	QTY
1	SCRAPER, ROLLER	0205169	2
2	SPRING, EXTENSION	0350033	4
3	HEX HEAD CAP SCREW- 5/16-18 x 1 1/2"	0346106	4
4	NUT, HEX NYLOCK- 5/16-18	0338101	4
5	NUT, HEX JAM- 5/16-18	0338051	4
6	HEX HEAD CAP SCREW- 3/8-16 x 1 1/4"	0346229	4
7	NUT, HEX- 3/8-16	0338003	4



GAS GREENS ROLLER ROLL-N-GO DWG #16

ISSUED: 03-25-2013

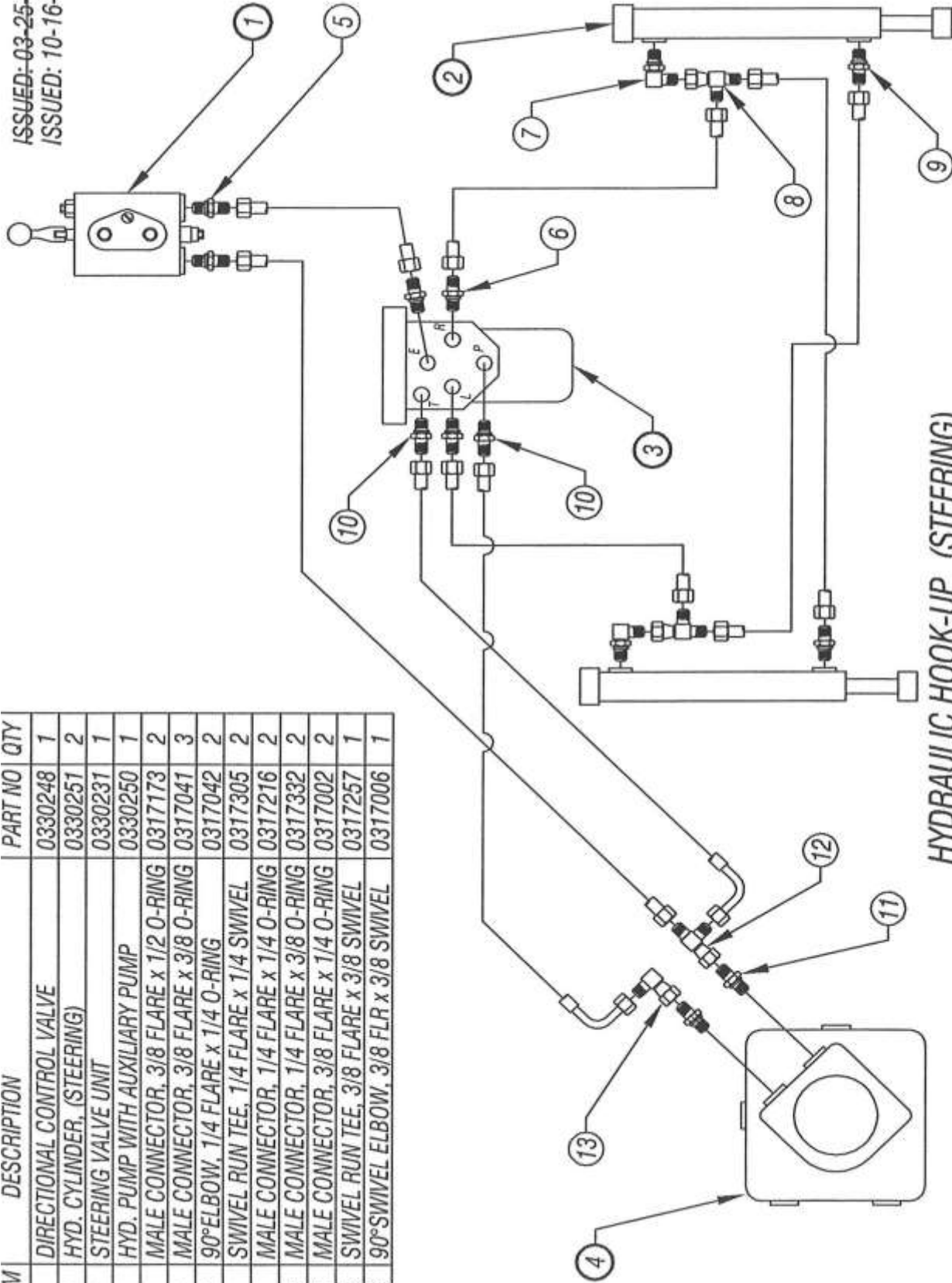
ITEM	DESCRIPTION	PART NO	QTY
1	CONNECTOR, 1/2 FLARE x 1/2 MNPT	0317054	1
2	CONNECTOR, 3/8 FLARE x 1/2 MNPT	0317050	1
3	90° ELBOW, 1/2 FLARE x 3/4 O-RING	0317079	2
4	90° ELBOW, 1/2 FLARE x 1/2 O-RING	0317007	1
5	CONNECTOR, 1/2 FLARE x 1/2 O-RING	0317030	2
6	90° ELBOW, 1/2 FLARE x 5/8 O-RING LG	0317250	1
7	90° ELBOW, 1/2 FLARE x 5/8 O-RING	0317007	3
8	90° ELBOW, 1/2 FLARE x 5/8 O-RING	0317029	1
9	45° SWIVEL ELBOW, 3/8 FLR x 3/8 NUT	0317032	1
10	HOSE, PUMP TO TANK, 3/8 ID x 44" LG	0327341	1
11	HOSE, TANK TO FILTER, 1/2 ID x 52" LG	0327517	1
12	HOSE, FILTER TO PUMP, 1/2 ID x 13" LG	0327516	1
13	HOSE, PUMP TO R/MOT, 1/2 ID x 62" 90°	0327510	1
14	HOSE, PUMP TO L/MOT, 1/2 ID x 23" LG	0327512	1
15	HOSE, MOTOR TO MOTOR, 1/2 ID x 76" LG	0327511	1



HYDRAULIC HOOK-UP (ROLL)  
 COMPONENTS, FITTINGS & HOSES  
 GAS GREENS ROLLER ROLL-N-GO - DWG #17

ISSUED: 03-25-2013  
ISSUED: 10-16-2013

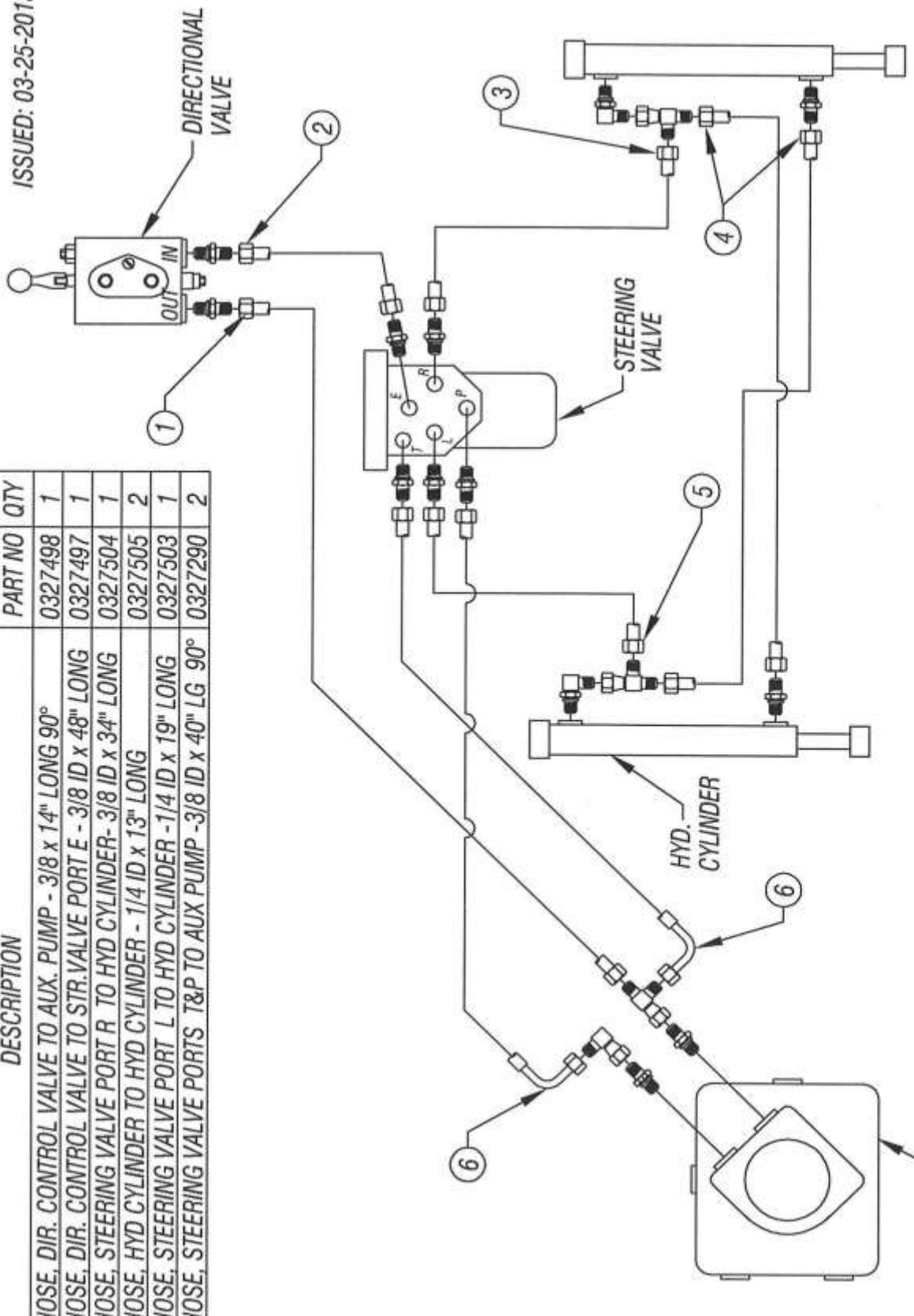
ITEM	DESCRIPTION	PART NO	QTY
1	DIRECTIONAL CONTROL VALVE	0330248	1
2	HYD. CYLINDER, (STEERING)	0330251	2
3	STEERING VALVE UNIT	0330231	1
4	HYD. PUMP WITH AUXILIARY PUMP	0330250	1
5	MALE CONNECTOR, 3/8 FLARE x 1/2 O-RING	0317173	2
6	MALE CONNECTOR, 3/8 FLARE x 3/8 O-RING	0317041	3
7	90° ELBOW, 1/4 FLARE x 1/4 O-RING	0317042	2
8	SWIVEL RUN TEE, 1/4 FLARE x 1/4 SWIVEL	0317305	2
9	MALE CONNECTOR, 1/4 FLARE x 1/4 O-RING	0317216	2
10	MALE CONNECTOR, 1/4 FLARE x 3/8 O-RING	0317332	2
11	MALE CONNECTOR, 3/8 FLARE x 1/4 O-RING	0317002	2
12	SWIVEL RUN TEE, 3/8 FLARE x 3/8 SWIVEL	0317257	1
13	90° SWIVEL ELBOW, 3/8 FLR x 3/8 SWIVEL	0317006	1



HYDRAULIC HOOK-UP (STEERING)  
COMPONENTS AND FITTINGS  
GAS GREENS ROLLER ROLL-N-GO - DWG #18

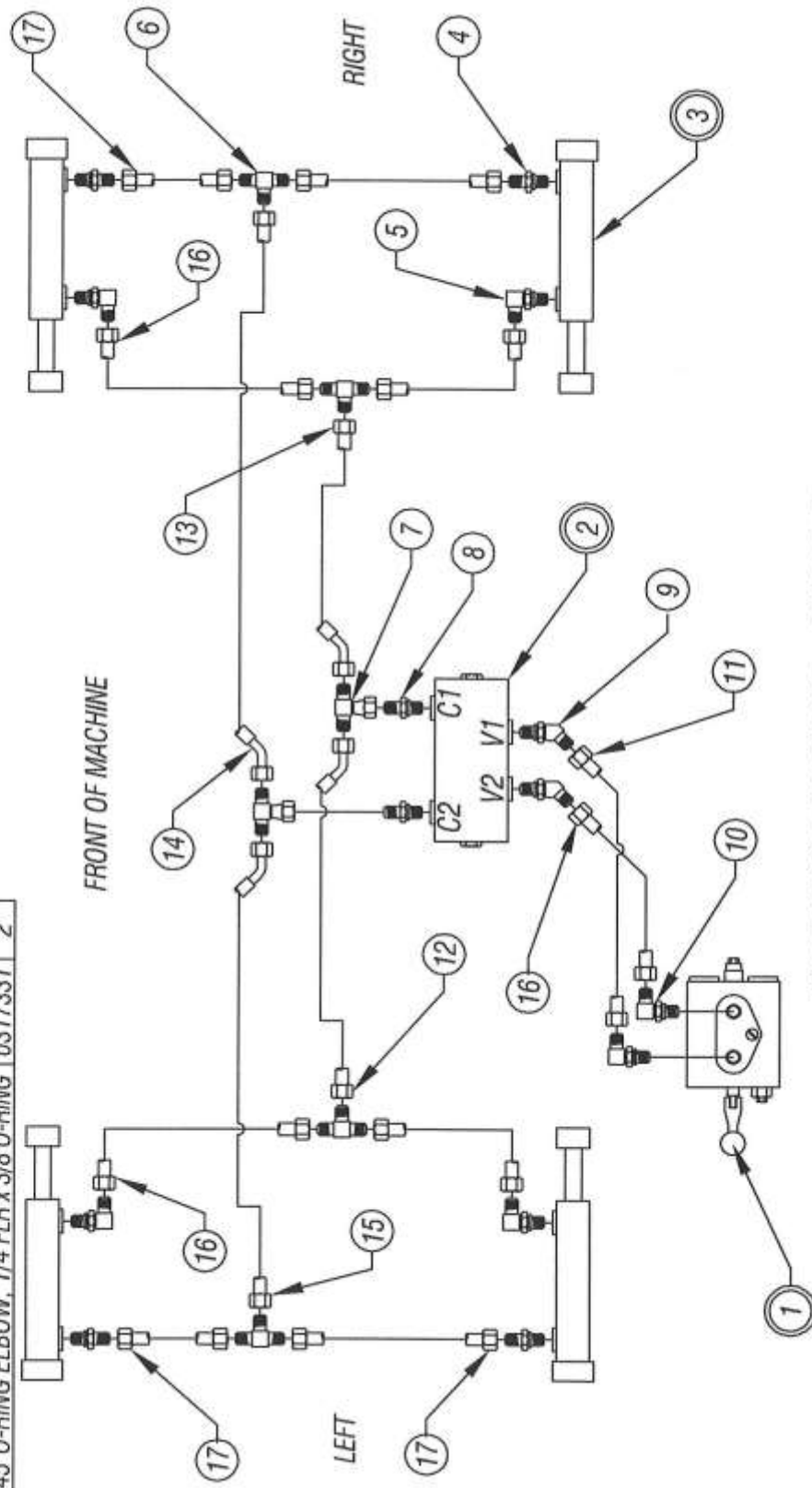
ISSUED: 03-25-2013

ITEM	DESCRIPTION	PART NO	QTY
1	HOSE, DIR. CONTROL VALVE TO AUX. PUMP - 3/8 x 14" LONG 90°	0327498	1
2	HOSE, DIR. CONTROL VALVE TO STR. VALVE PORT E - 3/8 ID x 48" LONG	0327497	1
3	HOSE, STEERING VALVE PORT R TO HYD CYLINDER- 3/8 ID x 34" LONG	0327504	1
4	HOSE, HYD CYLINDER TO HYD CYLINDER - 1/4 ID x 13" LONG	0327505	2
5	HOSE, STEERING VALVE PORT L TO HYD CYLINDER - 1/4 ID x 19" LONG	0327503	1
6	HOSE, STEERING VALVE PORTS T&P TO AUX PUMP - 3/8 ID x 40" LG 90°	0327290	2

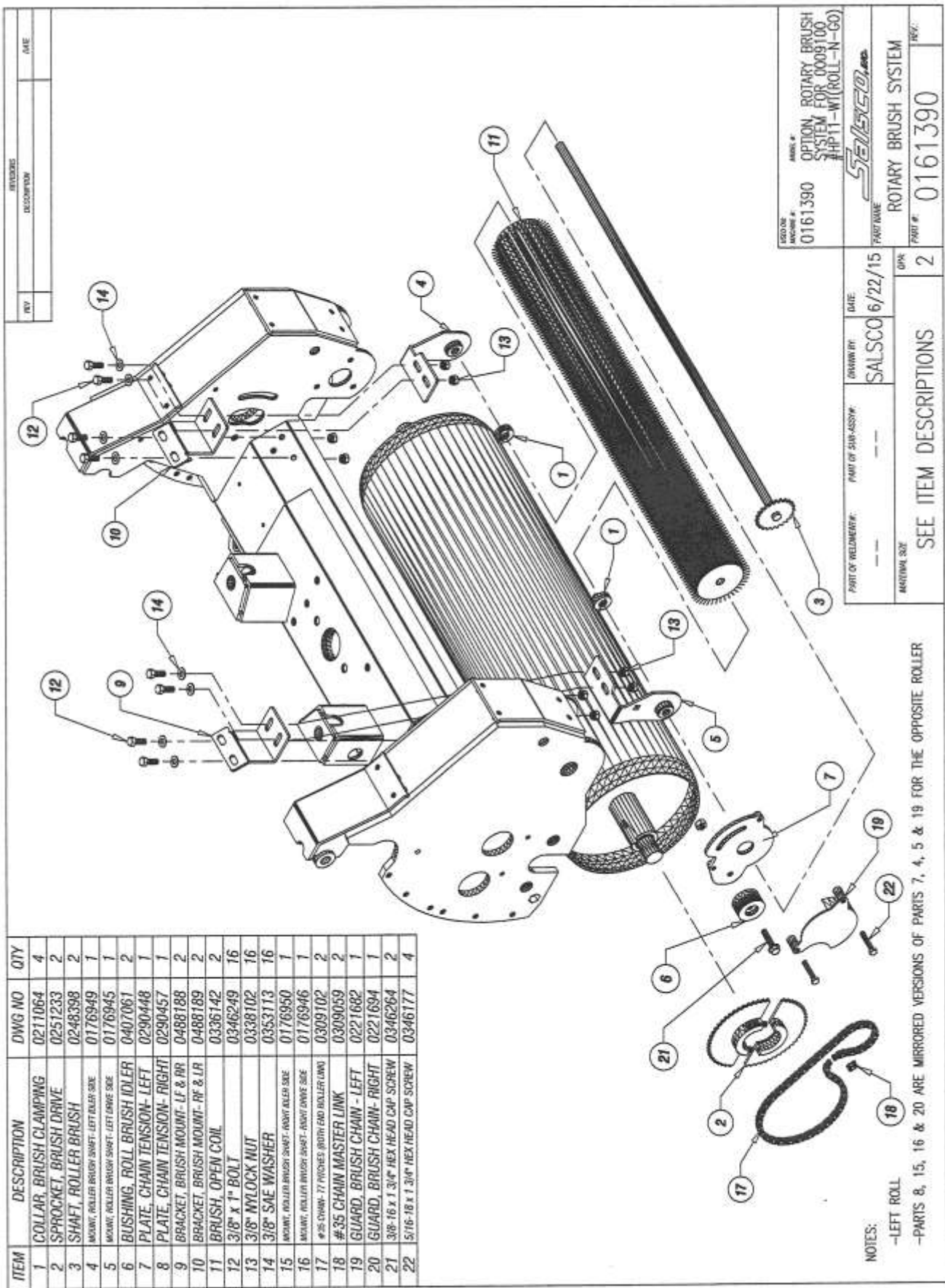


HYDRAULIC HOOK-UP (STEERING)  
 HYDRAULIC HOSES  
 GAS GREENS ROLLER ROLL-N-GO - DWG #19

ITEM	DESCRIPTION	PART NO	QTY	ITEM	DESCRIPTION	PART NO	QTY
1	DIRECTIONAL CONTROL VALVE	0330248	1	10	90° O-RING ELBOW, 1/4 FLR x 3/8 O-RING	0317334	2
2	CHECK VALVE, DUAL PILOT	0330249	1	11	HOSE, 1/4 ID x 14" LONG	0327502	1
3	HYD CYLINDER, (WHEELS)	0330252	4	12	HOSE, 1/4 ID x 15.5" LONG - 45° (1) END	0327271	1
4	MALE CONNECTOR, 1/4 FLR x 1/4 O-RING	0317216	4	13	HOSE, 1/4 ID x 34" LONG - 45° (1) END	0327504	1
5	90° O-RING ELBOW, 1/4 FLR x 1/4 O-RING	0317042	4	14	HOSE, 1/4 ID x 31" LONG - 45° (1) END	0327513	1
6	TEE, 1/4 FLARE x 1/4 FLARE x 1/4 FLARE	0317218	4	15	HOSE, 1/4 ID x 13" LONG - 45° (1) END	0327211	1
7	SWIVEL TEE, 1/4 FLR x 1/4 FLR x 1/4 NUT	0317333	2	16	HOSE, 1/4 ID x 29" LONG	0327501	5
8	MALE CONNECTOR, 1/4 FLR x 3/8 O-RING	0317332	2	17	HOSE, 1/4 ID x 36" LONG	0327306	4
9	45° O-RING ELBOW, 1/4 FLR x 3/8 O-RING	0317331	2				



HYDRAULIC HOOK-UP (WHEELS)  
 COMPONENTS, FITTINGS AND HOSES  
 GAS GREENS ROLLER ROLL-N-GO - DWG #20



ITEM	DESCRIPTION	DWG NO	QTY
1	COLLAR, BRUSH CLAMPING	0211064	4
2	SPROCKET, BRUSH DRIVE	0251233	2
3	SHAFT, ROLLER BRUSH	0248398	2
4	MOUNT, ROLLER BRUSH SHAF- LEFT ALLEN SIDE	0176949	1
5	MOUNT, ROLLER BRUSH SHAF- LEFT DRIVE SIDE	0176945	1
6	BUSHING, ROLL BRUSH IDLER	0407061	2
7	PLATE, CHAIN TENSION- LEFT	0290448	1
8	PLATE, CHAIN TENSION- RIGHT	0290457	1
9	BRACKET, BRUSH MOUNT- LF & RR	0488188	2
10	BRACKET, BRUSH MOUNT- RF & LR	0488189	2
11	BRUSH, OPEN COIL	0336142	2
12	3/8" x 1" BOLT	0346249	16
13	3/8" NYLOCK NUT	0338102	16
14	3/8" SAE WASHER	0353113	16
15	MOUNT, ROLLER BRUSH SHAF- RIGHT ALLEN SIDE	0176950	1
16	MOUNT, ROLLER BRUSH SHAF- RIGHT DRIVE SIDE	0176946	1
17	#25 CHAIN- 17 PITCHES, BOTH END ROLLER LINK	0309102	2
18	#35 CHAIN MASTER LINK	0309059	2
19	GUARD, BRUSH CHAIN- LEFT	0221682	1
20	GUARD, BRUSH CHAIN- RIGHT	0221694	1
21	3/8-16 x 1 3/4" HEX HEAD CAP SCREW	0346264	2
22	5/16-18 x 1 3/4" HEX HEAD CAP SCREW	0346177	4

NOTES:  
 -LEFT ROLL  
 -PARTS 8, 15, 16 & 20 ARE MIRRORED VERSIONS OF PARTS 7, 4, 5 & 19 FOR THE OPPOSITE ROLLER

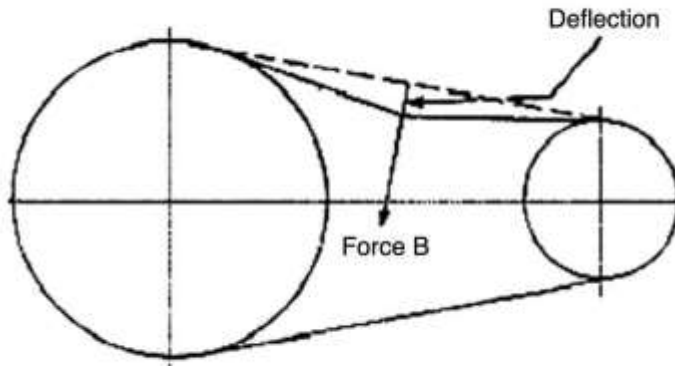
ECO CODE  
 MACHINE # 0161390  
 MODEL # OPTION, ROTARY BRUSH SYSTEM FOR 0009100  
 PART NAME HP11-WT(ROLL-N-GO)  
 STEELSCO, INC.  
 DATE 6/22/15  
 DRAWN BY SALSCO  
 PART OF WELDMENT: ---  
 PART OF SUB-ASSY: ---  
 ADDITIONAL QTY: ---  
 QTY 2  
 SEE ITEM DESCRIPTIONS  
 PART # 0161390  
 REV: ---

Below is a quick reference chart for various “Flat Head Cap Screws” and the torque recommendations.

**VALUES ARE STATED IN FOOT POUNDS**

BOLT SIZE	Thds Per Inch	SAE Grade 5	SAE Grade 8
1/4	20	10	14
	28	---	---
5/16	18	19	29
	24	---	---
3/8	16	33	47
	24	---	---
7/16	14	54	78
	20	---	---
1/2	13	78	119
	20	---	---
9/16	12	114	169
	18	---	---
5/8	11	154	230
	11	---	---
3/4	10	257	380
	10	---	---
7/8	9	382	600
	9	---	---
1	8	587	700
	8	---	---

Drive Belt Tension Measurement by Deflection



Deflection should be 3/8" when 8-12 lbs. push is applied at "B"

## **WARRANTY POLICY-GREENS ROLLERS**

***Please remember to complete and return your Warranty Card and Dealer Delivery Report. Warranty Claims will not be considered if your Warranty Card and Dealer Delivery Report has not been returned to Salsco.***

Your Salsco Commercial or Turf Equipment product is a commercial type product and is normally manufactured and sold for commercial or industrial use. **Salsco will, for the original purchaser, for (5) years from the date of purchase (90 days if used for rental purposes) repair or replace, free of charge, any SALSCO part or parts manufactured by Salsco found to be defective in material, workmanship or both.** Any transportation or shipping charges will be borne by the purchaser. If, during the warranty period stated above, the product does not function properly due to defect, simply contact Salsco and follow the Warranty Procedures included in this manual.

This warranty **does not** include:

- Incidental or consequential damages and is exclusive of any implied warranties.
- Normal maintenance parts, including, but not limited to hoses, chains, belts, filters, lubricants, etc.
- Parts or components, which are covered under the original manufacturer warranty, including, but not limited to engines, pumps, and motors.

## **WARRANTY PROCEDURE**

In order for Salsco to consider your warranty claims in a timely manner you must follow the simple procedures listed below:

### **MACHINE OR PART FAILURE**

- a) Call our service department for helpful instruction on how to correct or repair the problem. Preventive maintenance will also be suggested.
- b) When ordering parts for Warranty issues, you MUST retain possession of the old parts in question until notified with respect to returning the parts to Salsco or other disposition.
- c) Warranty Claims MUST be filed within 30-days from completion of the work performed. Contact our office for an electronic warranty claim form.
- d) Fill in all information requested on warranty claim form, a copy of which is included in this manual, (date of purchase, company name, address, etc.). List all parts used. Make sure part numbers are correct. You can obtain these from your manual. (include good description of problem; i.e. "leaking from spool" rather than "leaking").
- e) It is our goal to consider and reach a disposition on each Warranty Claim within 30-days from the date that it is received. Therefore it is important that you respond promptly to any request for further information. Claims with no response to inquiries will be closed as "**denied for lack of response**" 90-days from the date of request.
- f) Email, Fax or Send Warranty Claim form to our Warranty Department. – **Warranty on parts most often requires return of the parts that were replaced.** DO NOT DISCARD OLD PARTS UNTIL YOU HAVE RECEIVED A DETERMINATION AS TO WHETHER THESE PARTS MUST BE RETURNED.
- g) Our Warranty Department will contact and instruct you on how to return the Parts to Salsco on an RA #. Returns MUST be made within 30-Days from issuance of RA #. **FREIGHT CHARGES ON RETURN OF PARTS IS THE RESPONSIBILITY OF THE CUSTOMER.** Normal pre-delivery adjustments are not covered under warranty. Labor Warranties are based on reasonable time allowances as determined by Salsco, Inc. **TRAVEL TIME IS NOT REIMBURSED UNDER THE WARRANTY POLICY.**
- h) Be sure to put the RA form inside the box that you are shipping back; also be sure to put on the outside of the box "Return of Goods" and the RA #.
- i) Ship returns via a traceable method such as UPS Ground Service. Be sure that the shipment is insured for the appropriate value. If uninsured parts are lost, we cannot issue a credit.

**PLEASE NOTE: *Warranty forms should be filled out completely.***

**PREVENTIVE MAINTENANCE IS YOUR BEST INSURANCE AGAINST EQUIPMENT FAILURE. BE SURE TO READ THE MANUAL, ESPECIALLY THE MAINTENANCE, OPERATING AND CAUTION SECTIONS.**

\*warranty policies, forms and procedures are subject to change without notice

Revision Date 10/12/12

800-872-5726  
203-271-2596 (Fax)

**Salsco, Inc.**  
105 School House Rd.  
Cheshire, CT 06410  
203-271-1682

sales@salsco.com  
www.salsco.com

### DEALER DELIVERY REPORT

MODEL		SERIAL NO			
DEALER		CITY	STATE	ZIP	
PURCHASER (Last Name or Company)	(First Name)	(Middle Name)	ADDRESS	CITY	STATE ZIP

The undersigned dealer warrants that the above-described machine was carefully inspected, adjusted and prepared for delivery before delivery to the purchaser; that both the operation and maintenance of the machine were explained to the purchaser; and that a copy of the Owner's Instruction Manual were given to the purchaser and his attention called to Our Warranty and any operating instructions included in the manual and caution notes.

The undersigned purchaser certifies that the operation and maintenance of the above-described machine have been explained to him; acknowledges receipt of a copy of the Owner's Instruction Manual and Our Warranty Policy printed in said Instruction Manual and Caution Notes. I also understand that it is my responsibility to explain and make Salsco manuals available to new operators.

Date \_\_\_\_\_ Dealer \_\_\_\_\_  
Sign By \_\_\_\_\_  
Phone \_\_\_\_\_

Date \_\_\_\_\_ Purchaser \_\_\_\_\_  
Sign By \_\_\_\_\_  
Phone \_\_\_\_\_  
Email \_\_\_\_\_

FACTORY COPY WHITE - DEALER'S COPY YELLOW - OWNER'S COPY PINK

| SERIAL # | MODEL NO. |

### SALSCO LIMITED WARRANTY CARD

1. DATE PURCHASED: \_\_\_\_\_
2. PURCHASER: \_\_\_\_\_
3. PURCHASER ADDRESS: \_\_\_\_\_
4. EMAIL ADDRESS: \_\_\_\_\_
5. DEALER: \_\_\_\_\_
6. DEALER ADDRESS: \_\_\_\_\_
7. WILL THIS EQUIPMENT BE USED COMMERCIALY?  YES  NO
8. DID DEALER SERVICE THIS EQUIPMENT AND INSTRUCT YOU IN ITS CARE AND SAFE OPERATION ?  YES  NO
9. DID YOU RECEIVE AN "OPERATION & SERVICE MANUAL AND SAFETY PAMPHLET? "  YES  NO

## NOTICE

SIGNED \_\_\_\_\_  
Purchaser

IMPORTANT: THIS CARD MUST BE FILLED OUT COMPLETELY AND MAILED TO THE FACTORY WITHIN 10 DAYS OF PURCHASE DATE, OR YOUR LIMITED WARRANTY WILL BE VOIDED.

WHITE - DEALER

YELLOW - OWNER

CARD - FACTORY

## SALSCO WARRANTY CLAIM FORM

SALSCO, INC.  105 SCHOOL HOUSE RD. CHESHIRE, CT 06410	PHONE: 203-271-1682, 800-872-5726  FAX: 203-271-2596  EMAIL: s.clark@salsco.com  WEB: www.salsco.com	
END OWNER	PHONE:	
NAME:	FAX:	
EMAIL:		
ADDRESS:		
PURCHASED FROM:	PHONE:	
NAME:	FAX:	
EMAIL:		
ADDRESS:		
EQUIP/WARRANTY INFO: (MUST BE COMPLETE)		
PURCHASE DATE:	INV #:	DATE FAILED:
MODEL #:	SERIAL #	REPAIR DATE:
HRS USED:		
WARRANTY CLAIM/WORK ORDER #:		
WAS A SALSCO RETURN AUTH. # ISSUED FOR REPAIRS OR RETURN OF PARTS:      YES      NO		
IF YES, RA #:		
PROBABLE CAUSE OF FAILURE:		

**SALSCO WARRANTY CLAIM FORM - Continued**

WORK PERFORMED/COMMENTS ON REPAIR:


SHOP LABOR RATE:

SUBMITTED BY:

TOTAL LABOR HRS TO REPAIR:

PRINTED NAME:

SALSCO PART #: DESCRIPTION:	QTY	PRICE EACH	TOTAL	INVOICE #:	

FILL IN ALL INFORMATION REQUESTED ON WARRANTY CLAIM FORM. **INCOMPLETE FORMS CANNOT BE PROCESSED & WILL BE RETURNED.** LIST ALL PARTS USED. MAKE SURE PART NUMBERS ARE CORRECT. ANY PARTS THAT YOU BELIEVE TO BE DEFECTIVE OR ANY PARTS THAT BREAK SHOULD BE RETAINED FOR POSSIBLE INSPECTION UNTIL AFTER THE WARRANTY HAS BEEN PAID OR PART HAS BEEN RETURNED. **INV. # NEEDS TO BE INCLUDED ON WARRANTY CLAIM.**

**OFFICE USE ONLY**

DATE REC'D:	DLR. DEL REPORT ON FILE:	YES	NO
CUST ID:	WARRANTY CLAIM ON FILE:	YES	NO
SALSCO WC:	PARTS TOTAL:		
SALSCO RA:	LABOR TOTAL:		
DATE APPROVED:	TOTAL APPROVED:		
DATE REJECTED:	REJECTED DATE:		
PROCESSED BY:	REASON:		





105 School House Road  
Cheshire, CT 06410 U.S.A.  
800-872-5726, 203-271-1682, 203-271-2596 (Fax)  
sales@salsco.com, www.salsco.com