

**Quality of Workmanship
Innovative Design
Built to Last!**

Salsco, INC.
LEADER BY DESIGN



ROLL-N-GO, EHA - 09105 Operators And Parts Manual



MANUFACTURER OF OUTDOOR POWER EQUIPMENT

Products for Turf & Lawncare, Rental, Construction, Tree Care, Wood Processing, Nursery & Farm Industries

**3-1/2" - 18" Capacity, Gas, Diesel, & PTO Wood/Brush Chippers - Slab Chippers
Gas, Electric & Tow Behind Rollers - Tranz-Former Roller - CRV Core Recovery Vehicle
Mini-Paver - Mini-Track Paver - Cobra Curbers - Scorpion Router - Concrete Paver
Chipper Shredder Vacuums - Tailgate & Truckloader Vacuums
9 cu. yds. - 50 cu. yds. Per Hour, Electric, PTO & Diesel Powered Shaving Mills**

Salsco, INC.
LEADER BY DESIGN

105 Schoolhouse Road
Cheshire, CT 06410 U.S.A.
800-872-5726 (Toll Free), 203-271-1682, 203-271-2596 (Fax)
www.salsco.com, sales@salsco.com

TABLE OF CONTENTS

MODEL 0009105 – ROLL-N-GO, EHA

COVER & TABLE OF CONTENTS.....Pages 1-2

STATEMENT OF FACTPage 3

SPECIFICATIONS & FEATURESPage 4

HYDRAULIC OIL, MOBIL 1-15W-50 SYNTHETIC ENGINE OIL (MSDS SHEET).... Pages 5-6

PARTS DIAGRAMSPages 7-20

SWITCH & CYLINDERS WIRING DIAGRAM.....Page 21

SEAT SWITCH WIRING & SCRAPER KIT DIAGRAMS.....Pages 22-23

HYDRAULIC DRAWINGS.....Pages 24-26

CROSS CONTAMINATION PREVENTION KIT, OPTION.....Page 27

TORQUE CHARTSPage 28

SERVICE INTERVAL SCHEDULE Page 29

SERVICE SCHEDULE LOGPage 30

SALSCO, INC.

105 Schoolhouse Road
Cheshire, CT 06410 USA
800-872-5726, 203-271-1682
203-271-2596 (Fax)
www.salsco.com, sales@salsco.com

STATEMENT OF FACT

You have just purchased the highest quality, most dependable, GREENS ROLLER on the market today. This unit has the ability to meet exact standards and perform for years with minimum downtime. **HOWEVER**, it cannot read nor will it understand this manual no matter how long you leave it on top of the machine.

It is your responsibility to read and understand this manual; it is also your responsibility to be certain this information is passed along to anyone who is expected to operate this equipment. Should you choose not to read, understand and pass along the information provided you, please expect equipment failure and possible injuries to persons around this equipment.

For the safety of the operator, it is imperative that this manual is carefully read and understood.

Once you have read this manual, it is your responsibility to be sure that all new operators read and understand this manual, especially all cautions stated.

As a manufacturer of equipment, we have a responsibility to design a safe piece of equipment. NOTE: The important safeguards and instructions in this manual are not meant to cover all possible conditions and situations that may occur. It must be understood that common sense, caution, and care are factors, which cannot be built into any product. These factors must be supplied by the person(s) caring for and operating this equipment.

ONLY YOU CAN PREVENT ACCIDENTS!

ROLL-N-GO, EHA - SPECIFICATIONS AND STANDARD FEATURES

ENGINE:	13HP Honda, electric start, rubber mounted to reduce vibration.
FUEL TANK:	6 gallon, CARB approved canister fuel tank.
CONTROLS:	On/Off switch, choke & fuel. Raise lower rocker switch for wheels.
HOUR METER:	Standard.
BATTERY:	12 Volt, 300 CCA, automotive type.
ENGINE COOLING FAN:	Cooling fan - Standard
SEAT:	Molded cushion, arm rest with protective edge trim. Neutral safety switch & forward/reverse slide adjustment, rubber mounted to reduce vibration.
STEERING SYSTEM:	Both rolls articulate and oscillate to smooth the surface without changing the undulations designed into the green.
STEERING WHEEL:	13-1/4" diameter, automotive type tilt steering wheel. 13-1 ratio.
MAIN FRAME:	2-1/2" x 2-1/2" x 1/8" steel square tube. Fully gusseted and continuous welds.
DRIVE ROLLS:	Two (2) oscillating steel rolls, both driven for positive traction. 1-1/4" roll mounting bearing. 10-3/4" diameter, 36" long with with beveled ends. Rolls are machined to within two thousandths of an inch concentricity.
TRACTION DRIVE:	Hydraulic pump to 2 hydrostats - 1 to each roll. Chain drive from hydraulic motors to rolls. #50 Chain & Sprockets.
CLIMBING TRACTION:	Up to 40°.
BRAKES:	Parking brake.
HYDRAULIC COMPONENTS:	Hoses: SAE JIC hose ends & fittings. 3,000 P.S.I. working, 12,000 P.S.I. burst. Motors: Two (2) Char-Lynn 7.3 cubic inch displacement Pump: One (1) Hydro-Gear, 0.97 cubic inch displacement.
ELECTRIC HYDRAULIC CYLINDERS;	Four (4) double action, 6" stroke.
ROLLING SWATH:	36"
SPEED:	0 - 11 MPH
GROUND PRESSURE:	10.2 P.S.I. without water, 11.6 P.S.I. with water.
TIRE/WHEEL ASSYS.	Four (4) 8.5 x 8.5-8, 6 ply, turf tires hydraulically operated. Two are drive wheels.
GUARDS/DECALS:	All moving parts guarded. Full set of safety decals.
PAINT:	Orange, polyester powder coat paint provides excellent outdoor weatherability and offers protection against ultraviolet discoloration. All parts painted separately.
ROLLER OPTIONS:	Rotary Brush System, LED Light Kit, Topdressing Brush Kit, Spike-Air Kit.
TRANSPORT DIMENSIONS	80" long x 68" Wide x 59" High- 1480 lbs.
ROLLING DIMENSIONS	68" long x 36" Wide x 59" High - 1480 lbs.

Rev. 3/27/2020

Specifications & Options Subject to Change Without Notice.

Mobil

Mobil 1™ 15W-50

Advanced Full Synthetic Engine Oil

Product Description

Mobil 1™ 15W-50 is an advanced full synthetic engine oil designed to help provide exceptional wear protection for a smooth driving experience. Mobil 1 15W-50 meets or exceeds the requirements of the industry and car manufacturers' standards required for high-performance turbo-charged, supercharged gasoline and diesel multi-valve fuel injected engines. Mobil 1 15W-50 is a winning, race-proven technology. It is especially suited for a wide variety of motorsports applications, towing, and other severe service situations. Mobil 1 15W-50 helps to provide outstanding engine oil performance and protection for the winning edge. Mobil 1 is the official motor oil of NASCAR.

Features and Potential Benefits

Mobil 1 15W-50 is made with a proprietary blend of ultra high performance synthetic basestocks fortified with a precisely balanced component system. Mobil 1 15W-50's heavier viscosity together with this high-performance component system helps to provide the ultimate in dynamic lubricant protection. This feature is supported, not only by meeting or exceeding the toughest industry performance standards, but also it is proven in gruelling racing applications. Key features and potential benefits include:

Features	Advantages and Potential Benefits
Advanced Full synthetic formula	Helps prevent deposits and sludge build-up to enable long engine life Excellent overall lubrication and wear protection performance for many driving styles
Outstanding thermal and oxidation stability	Outstanding performance during the maximum oil change interval recommended in a vehicle's owners manual
Extra anti-wear additive	Extra protection for severe service

Applications

Mobil 1 15W-50 is recommended for all types of vehicles, suitable for use in high-performance turbo-charged, supercharged gasoline and diesel multi-valve fuel injected engines found in passenger cars, light vans and trucks.

- Mobil 1 15W-50 is suitable extreme engine stress conditions, where conventional oil often may not perform.
- Mobil 1 15W-50 is not recommended for 2-Cycle or aviation engines, unless specifically approved by the manufacturer.

Specifications and Approvals

Mobil 1 15W-50 meets or exceeds the requirements of:	
API	SN, SM, SL, SJ
ACEA	A3/B3

According to ExxonMobil, Mobil 1 15W-50 is of the following quality level:

API

CF

Typical Properties

Mobil 1 15W-50	
SAE Grade	15W-50
Viscosity @ 100°C, cSt (ASTM D445)	18
Viscosity, @ 40°C, cSt (ASTM D445)	125
Viscosity Index	160
Sulfated Ash, wt% (ASTM D874)	1.21
HTHS Viscosity, mPa*s @ 150°C (ASTM D4683)	4.5
Pour Point, °C (ASTM D97)	-39
Flash Point, °C (ASTM D92)	232
Density @15.6° C g/ml ASTM D4052)	0.87

Health and Safety

Based on available information, this product is not expected to produce adverse effects on health when used for the intended application and the recommendations provided in the Material Safety Data Sheet (MSDS) are followed. MSDS's are available upon request through your sales contract office, or via the Internet. This product should not be used for purposes other than its intended use. If disposing of used product, take care to protect the environment.

Mobil , Mobil 1 and the Pegasus design are trademarks of Exxon Mobil Corporation, or one of its subsidiaries.

1-2013

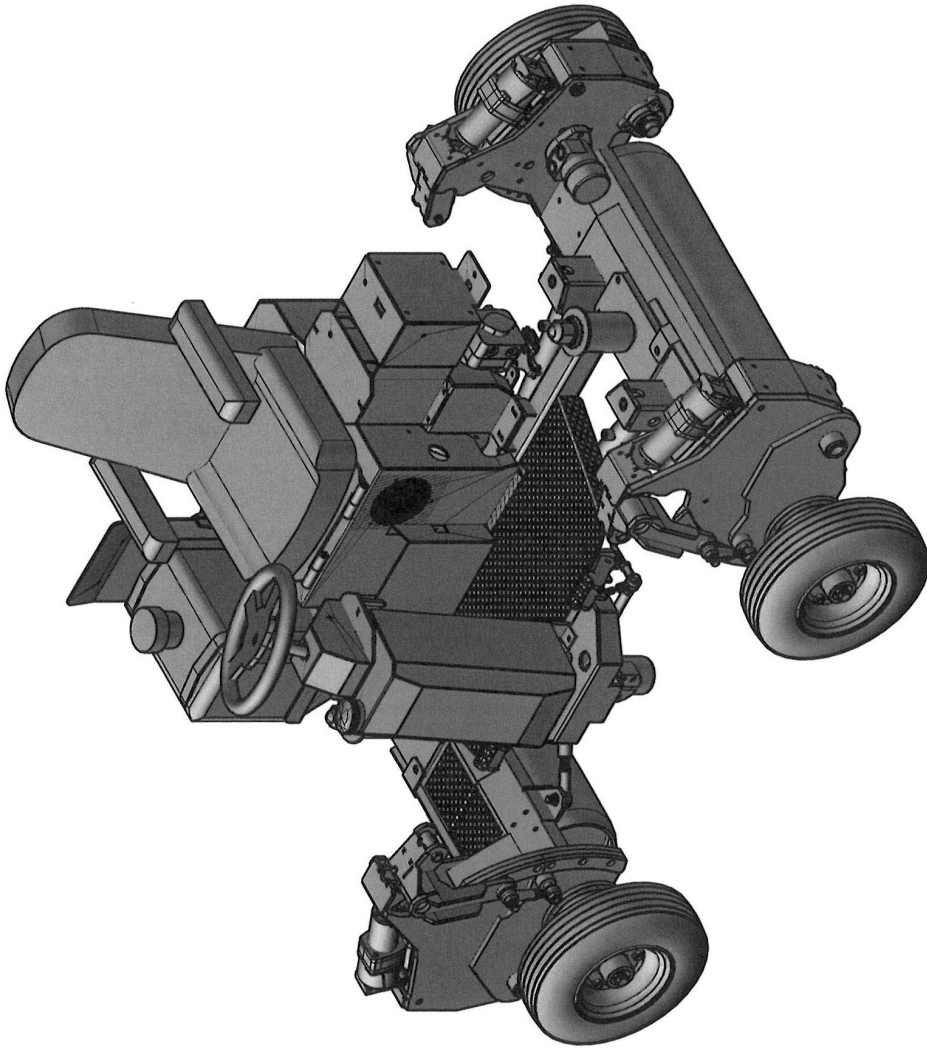
Exxon Mobil Corporation
3225 Gallows Road
Fairfax, VA 22037

1-800-ASK MOBIL (275-6624)

Typical Properties are typical of those obtained with normal production tolerance and do not constitute a specification. Variations that do not affect product performance are to be expected during normal manufacture and at different blending locations. The information contained herein is subject to change without notice. All products may not be available locally. For more information, contact your local ExxonMobil contact or visit www.exxonmobil.com
ExxonMobil is comprised of numerous affiliates and subsidiaries, many with names that include Esso, Mobil, or ExxonMobil. Nothing in this document is intended to override or supersede the corporate separateness of local entities. Responsibility for local action and accountability remains with the local ExxonMobil-affiliate entities.

Copyright © 2001-2013 Exxon Mobil Corporation. All rights reserved..

ISSUED: 6-16-2015

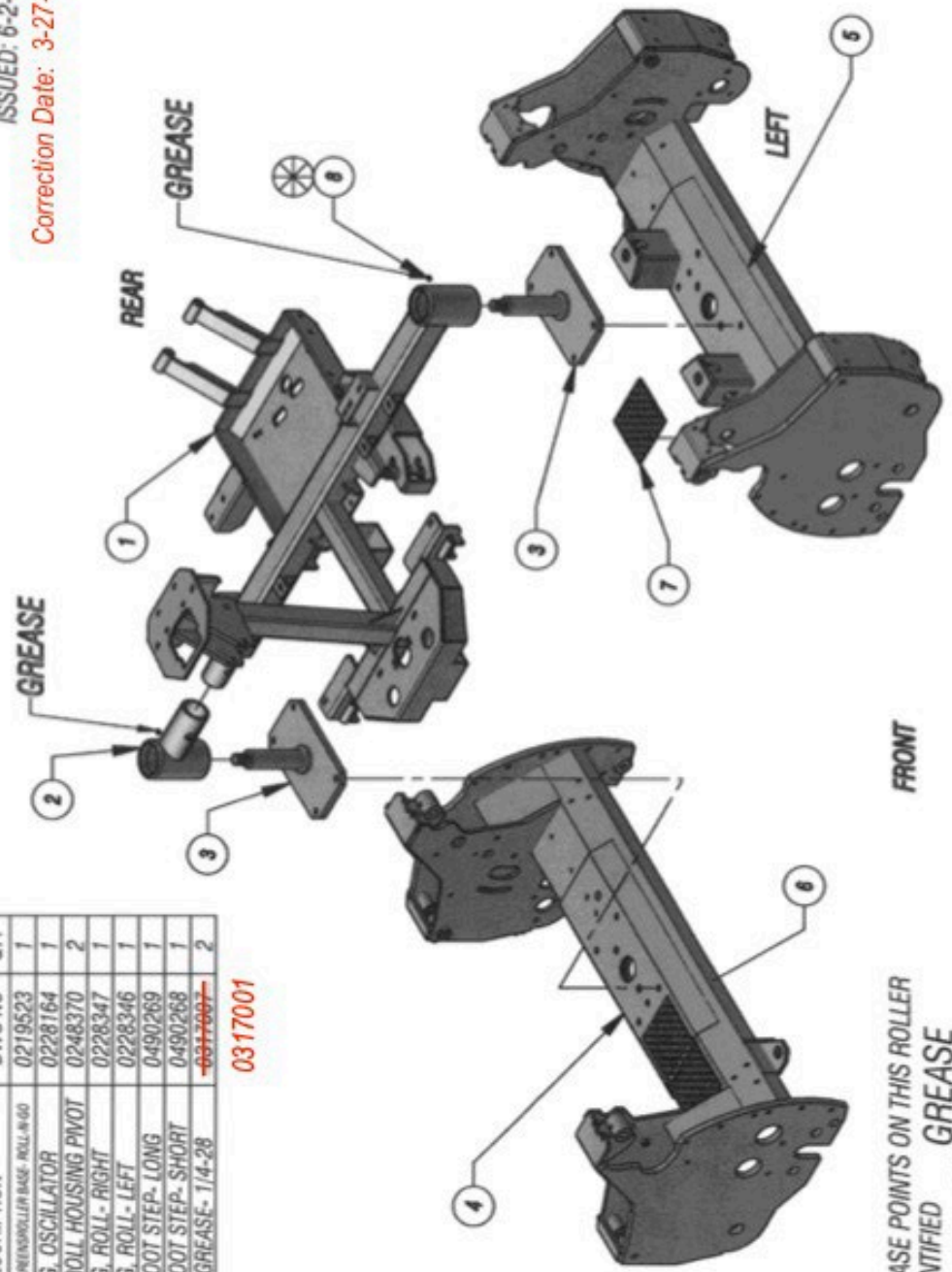


GAS GREENS ROLLER ROLL-N-GO-EHA DWG #1

ISSUED: 6-2-2015
 Correction Date: 3-27-2023

ITEM	DESCRIPTION	DWG NO	QTY
1	FRAME, GAS GREENSROLLER BASE- ROLL-N-GO	0219523	1
2	HOUSING, OSCILLATOR	0228164	1
3	SHAFT, ROLL HOUSING PIVOT	0248370	2
4	HOUSING, ROLL- RIGHT	0228347	1
5	HOUSING, ROLL- LEFT	0228346	1
6	PLATE, FOOT STEP- LONG	0490269	1
7	PLATE, FOOT STEP- SHORT	0490268	1
8	FITTING, GREASE- 1/4-28	0317007	2

0317001



NOTE:

⊗ ALL GREASE POINTS ON THIS ROLLER ARE IDENTIFIED
 GREASE

TOTAL OF 22 GREASE FITTINGS

GAS GREENS ROLLER ROLL-N-GO-EHA DWG #2

ISSUED: 6-2-2015

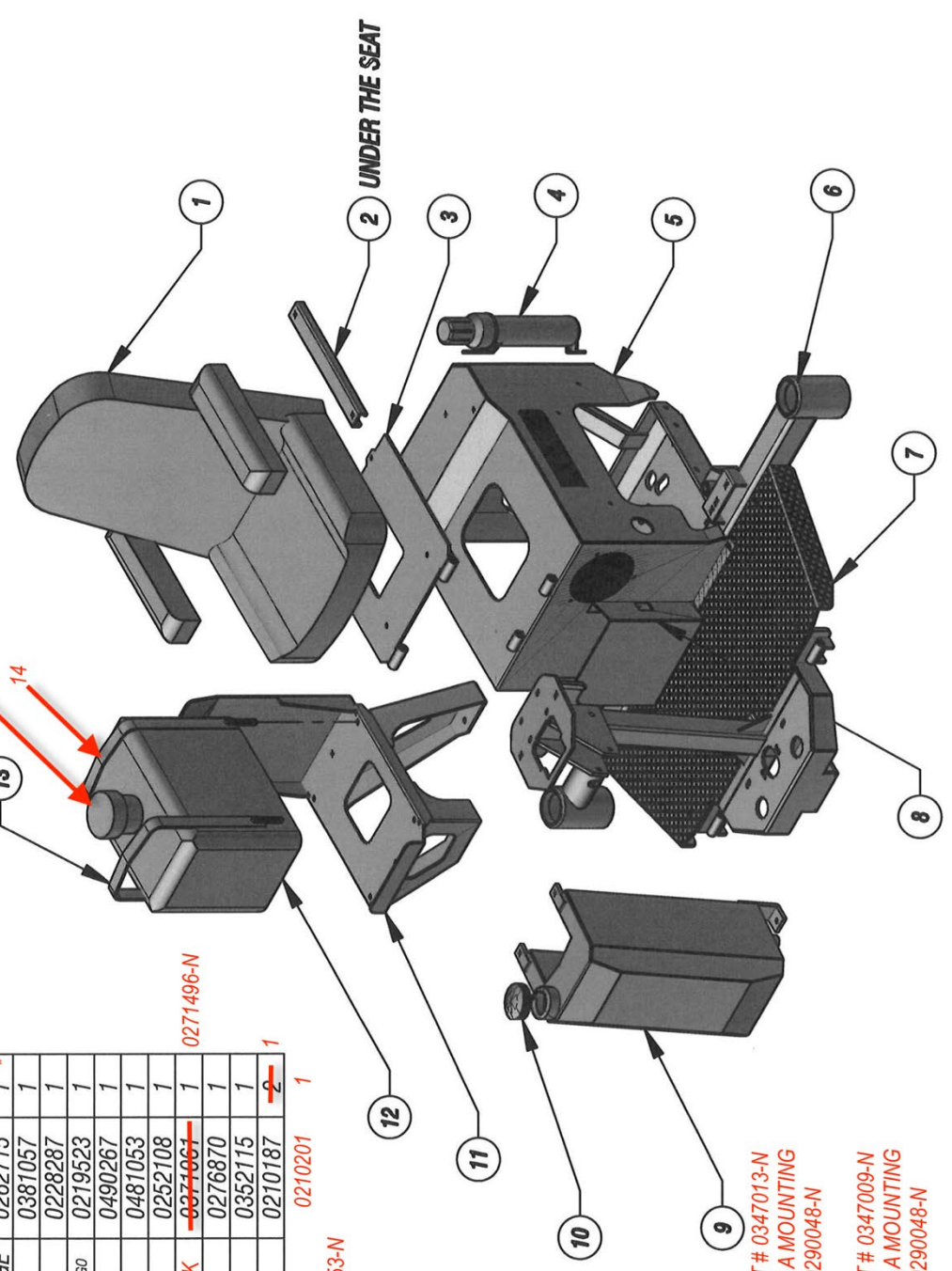
CORRECTION DATE 3-1-2023

ITEM	DESCRIPTION	DWG NO	QTY
1	SEAT WITH ARM REST	0347010	1 *
2	SLIDE ASSY KIT (FOR SEAT)	0347005	1 *
3	PLATE, SEAT MOUNT & HINGE	0262715	1 *
4	HOLDER, MANUAL	0381057	1
5	HOUSING, ENGINE	0228287	1
6	FRAME, GAS GREENROLLER BASE- ROLL-N-GO	0219523	1
7	PLATE, FLOOR	0490267	1
8	HOLDER, CLIPBOARD	0481053	1
9	TANK, HYD OIL	0252108	1
10	CAP, FILLER WITH DIPSTICK	0374061	1
11	MOUNT, FUEL TANK	0276870	1
12	FUEL, TANK	0352115	1
13	CLAMP, 6 GAL. FUEL TANK	0210187	2 1
14	CLAMP, 6 GAL. FUEL TANK	0210201	1

***CARBON CANISTER - 0318053-N

FUEL CAP - PART # 0371468-N

* See notes below



ITEM 1 – REPLACED WITH PART # 0347013-N
NOTE: S/N'S 5175 AND BELOW, A MOUNTING PLATE IS REQUIRED – PART # 02900048-N

ITEM 2 – REPLACED WITH PART # 0347009-N
NOTE: S/N'S 5175 AND BELOW, A MOUNTING PLATE IS REQUIRED – PART # 02900048-N

ITEM 3 – FOR UNITS WITH THE ABOVE LISTED SEATS ONLY. S/N'S 5175 AND BELOW

GAS GREENS ROLLER ROLL-N-GO-EHA DWG #3

ISSUED: 6-2-2015

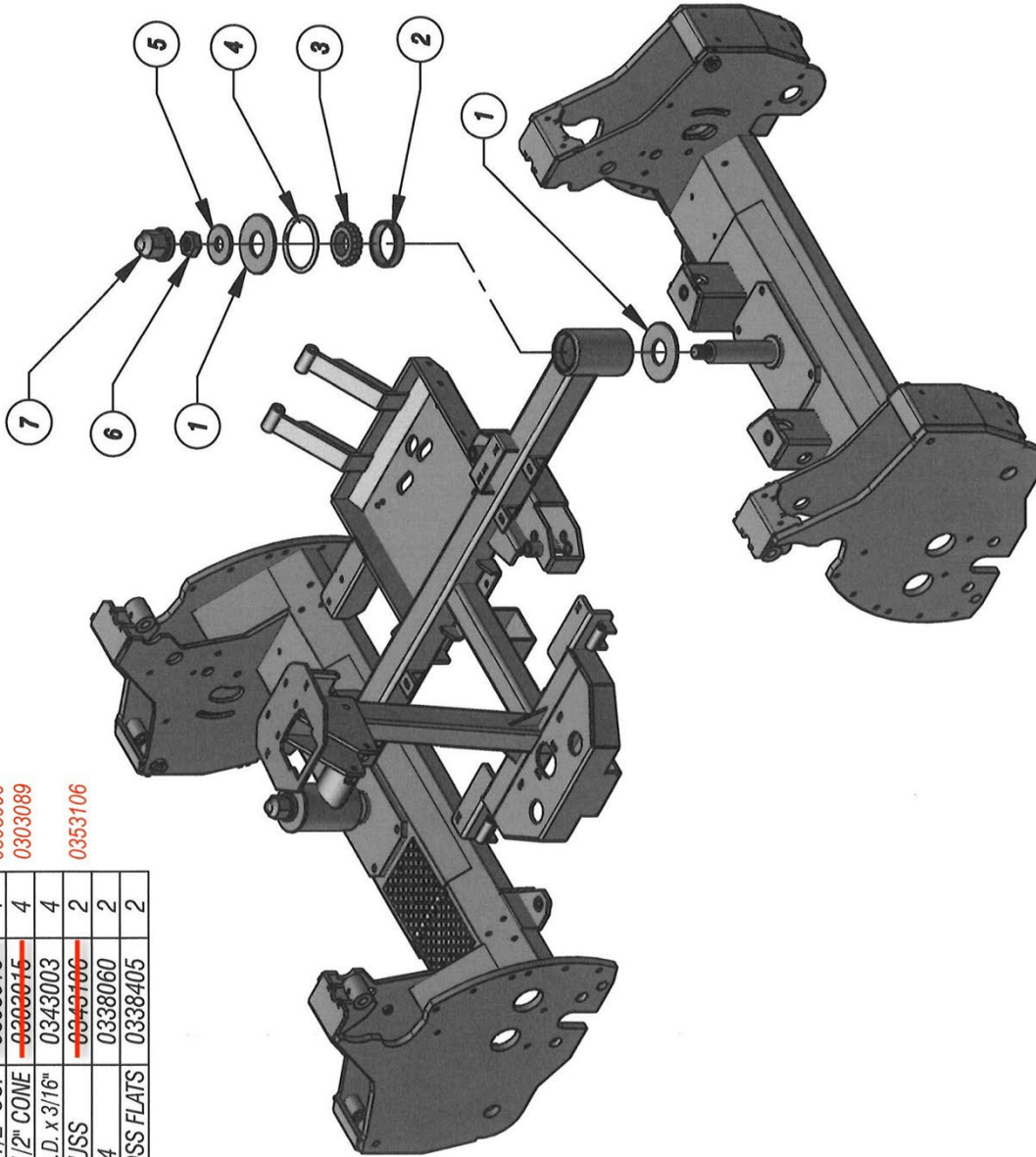
CORRECTION DATE 3-1-2023

ITEM	DESCRIPTION	DWG NO	QTY
1	WASHER, FLAT PUNCHED- 1 9/16" I.D. x 3 1/2" O.D. x 1/8"	0453117	4
2	BEARING, ROLLER- 1 1/2" CUP	0303016	4
3	BEARING, ROLLER- 1 1/2" CONE	0303015	4
4	O-RING, 3" I.D. x 3 3/8" O.D. x 3/16"	0343003	4
5	WASHER, FLAT- 3/4" USS	0343106	2
6	NUT, HEX JAM- 7/8-14	0338060	2
7	CAP, NUT- 5/16" ACROSS FLATS	0338405	2

0303090

0303089

0353106

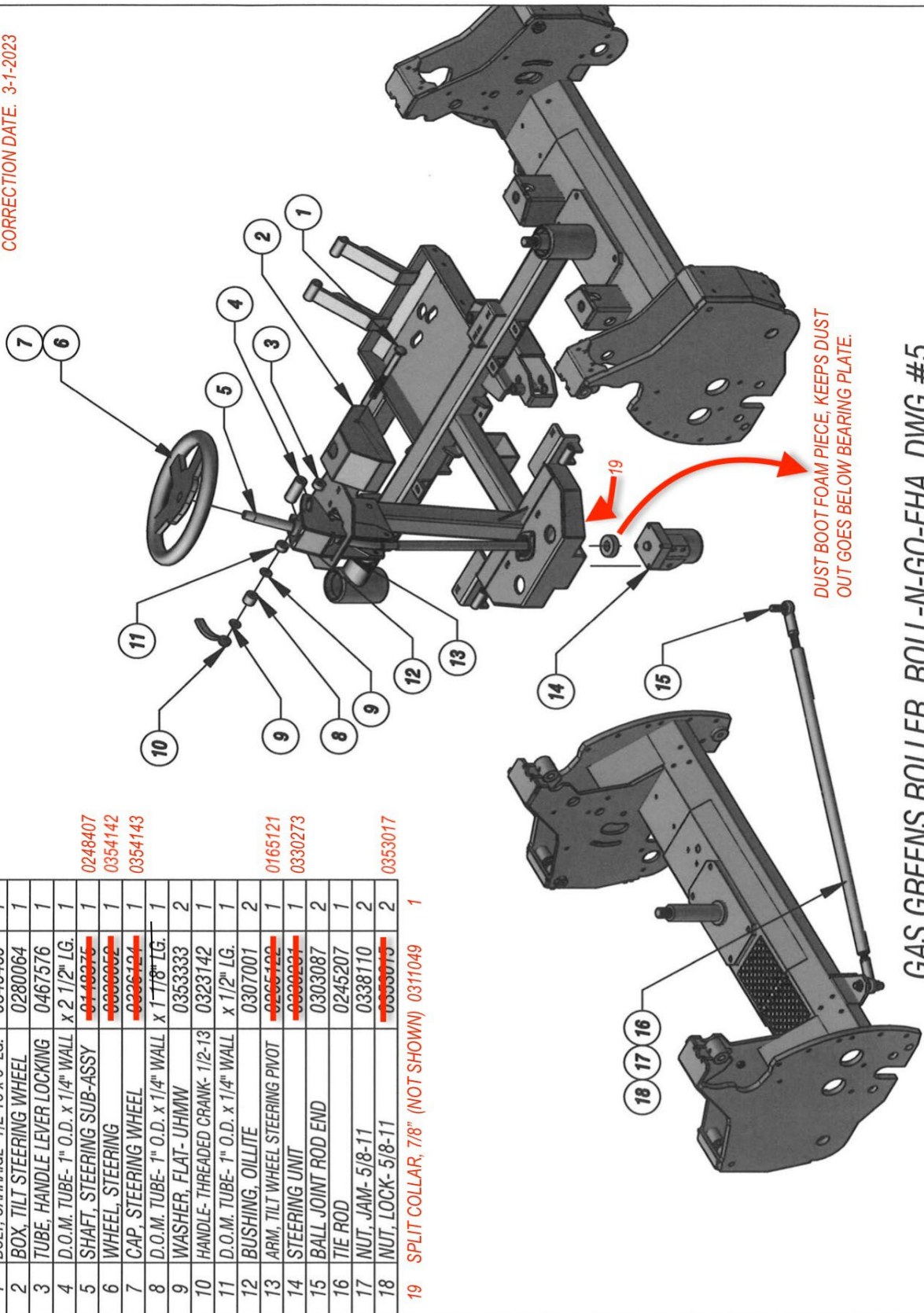


GAS GREENS ROLLER ROLL-N-GO-EHA DWG #4

ISSUED: 6-3-2015

CORRECTION DATE: 3-1-2023

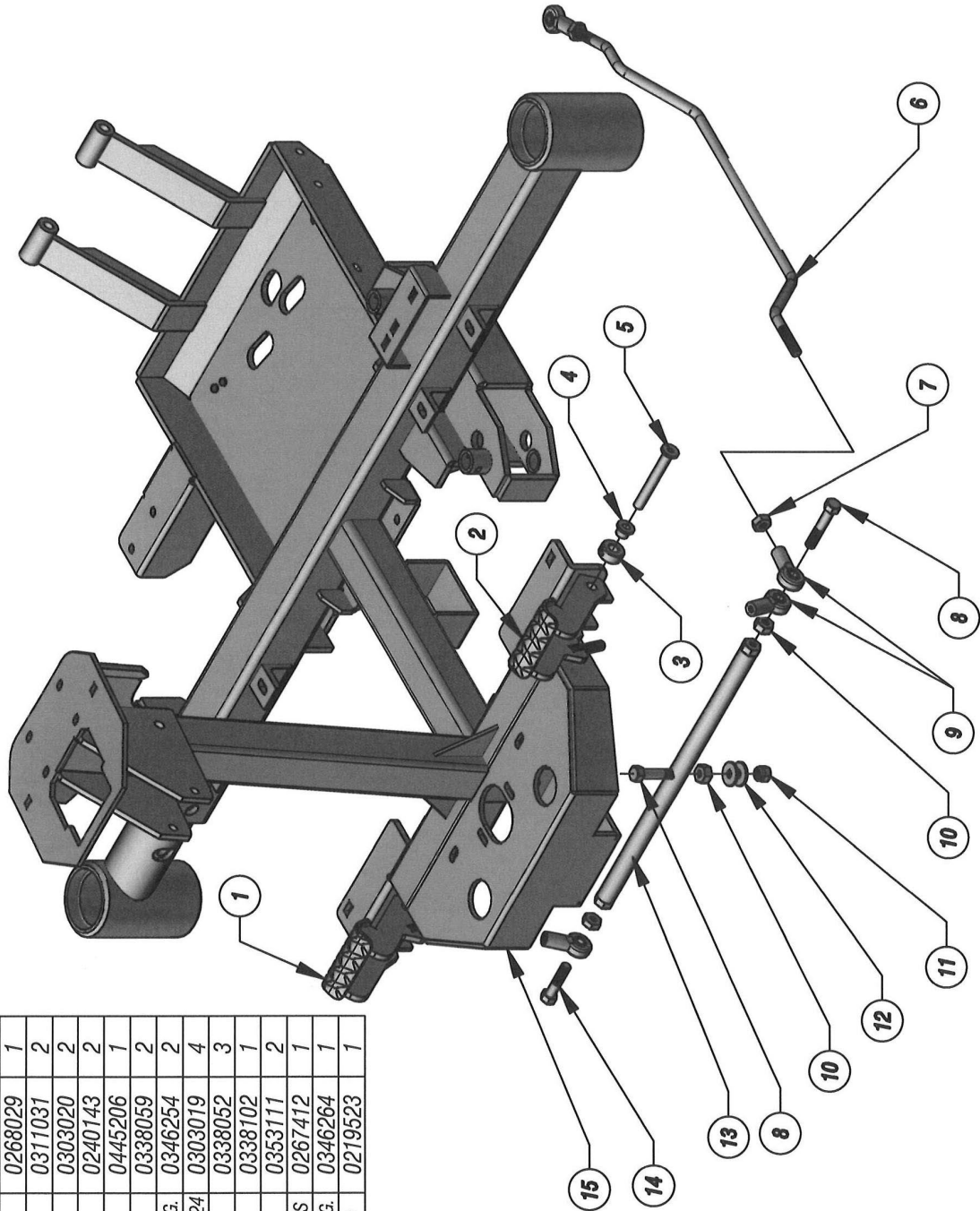
ITEM	DESCRIPTION	DWG NO	QTY
1	BOLT, CARBAGE- 1/2-13 x 6" LG.	0346469	1
2	BOX, TILT STEERING WHEEL	0280064	1
3	TUBE, HANDLE LEVER LOCKING	0467576	1
4	D.O.M. TUBE- 1" O.D. x 1/4" WALL x 2 1/2" LG.	0140075	1
5	SHAFT, STEERING SUB-ASSY	0000052	1
6	WHEEL, STEERING	0326124	1
7	CAP, STEERING WHEEL	0326124	1
8	D.O.M. TUBE- 1" O.D. x 1/4" WALL x 1 7/8" LG.	0353333	2
9	WASHER, FLAT- UHMW	0323142	1
10	HANDLE- THREADED CRANK- 1/2-13 x 1 1/2" LG.	0307001	2
11	D.O.M. TUBE- 1" O.D. x 1/4" WALL	0205102	1
12	BUSHING, OILLITE	0300234	1
13	ARM, TILT WHEEL STEERING PIVOT	0303087	2
14	STEERING UNIT	0245207	1
15	BALL JOINT ROD END	0338110	2
16	TIE ROD	0353017	2
17	NUT, JAM- 5/8-11		
18	NUT, LOCK- 5/8-11		
19	SPLIT COLLAR, 7/8" (NOT SHOWN)	0311049	1



GAS GREENS ROLLER ROLL-N-GO-EHA DWG #5

ISSUED: 6-3-2015

ITEM	DESCRIPTION	DWG NO	QTY
1	PEDAL, FOOT- RIGHT	0268028	1
2	PEDAL, FOOT- LEFT	0268029	1
3	COLLAR, SET	0311031	2
4	BUSHING, FLANGED OILLITE	0303020	2
5	PIN, FOOT PEDAL PIVOT	0240143	2
6	ROD, FORWARD REVERSE	0445206	1
7	NUT, HEX JAM- 3/8-24	0338059	2
8	BOLT, HEAVY HEX- 3/8-16 x 2 1/4" LG.	0346254	2
9	BEARING, SWIVEL ROD END- 3/8-24	0303019	4
10	NUT, HEX JAM- 3/8-16	0338052	3
11	NUT, HEX- NYLOCK 3/8-16	0338102	1
12	WASHER, FLAT- 3/8 U.S.S.	0353111	2
13	TUBE, FORWARD REVERSE PEDALS	0267412	1
14	BOLT, HEAVY HEX- 3/8-16 x 1 3/4" LG.	0346264	1
15	FRAME, GAS GREENSROLLER BASE- ROLL-N-GO	0219523	1

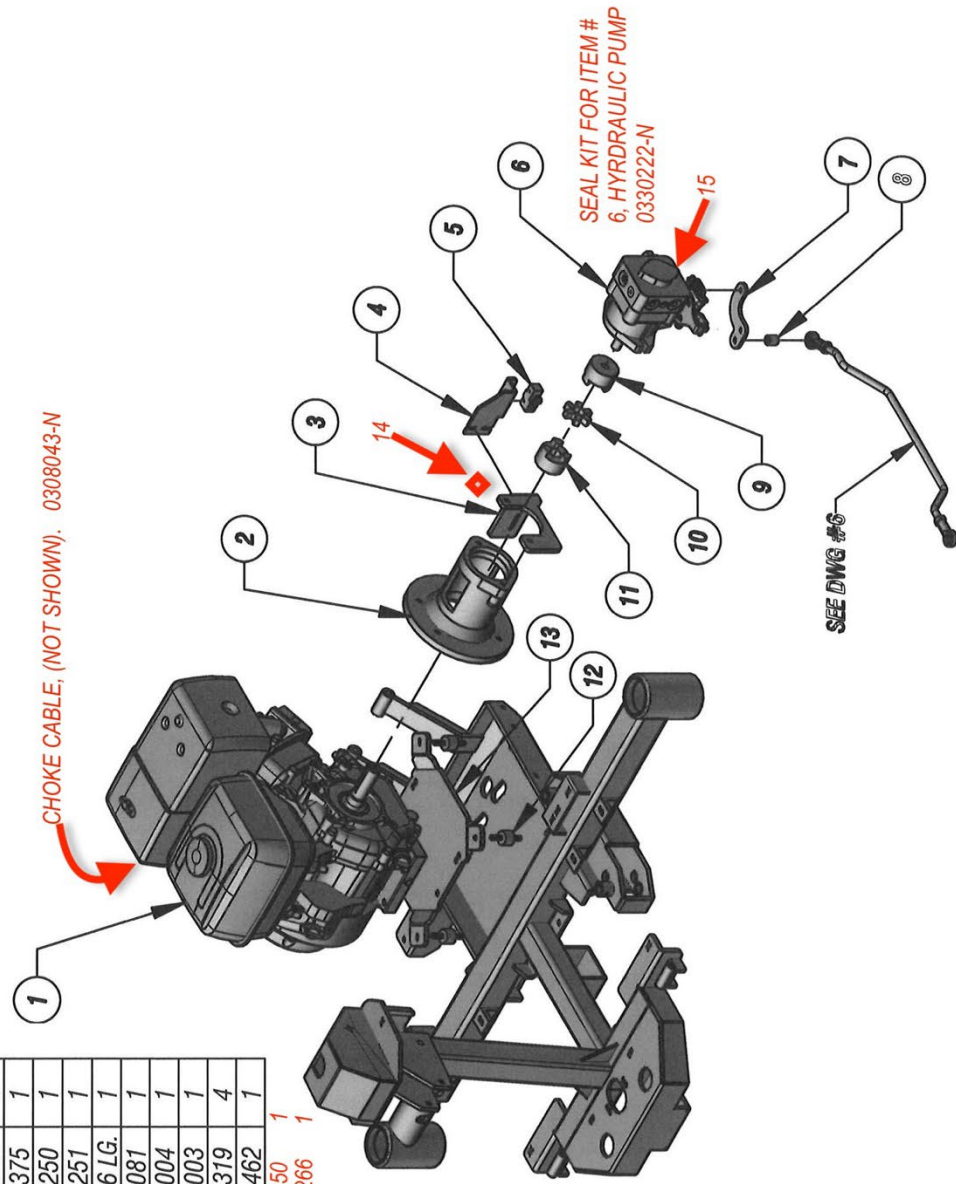


GAS GREENS ROLLER ROLL-N-GO-EHA DWG #6

ISSUED: 6-3-2015

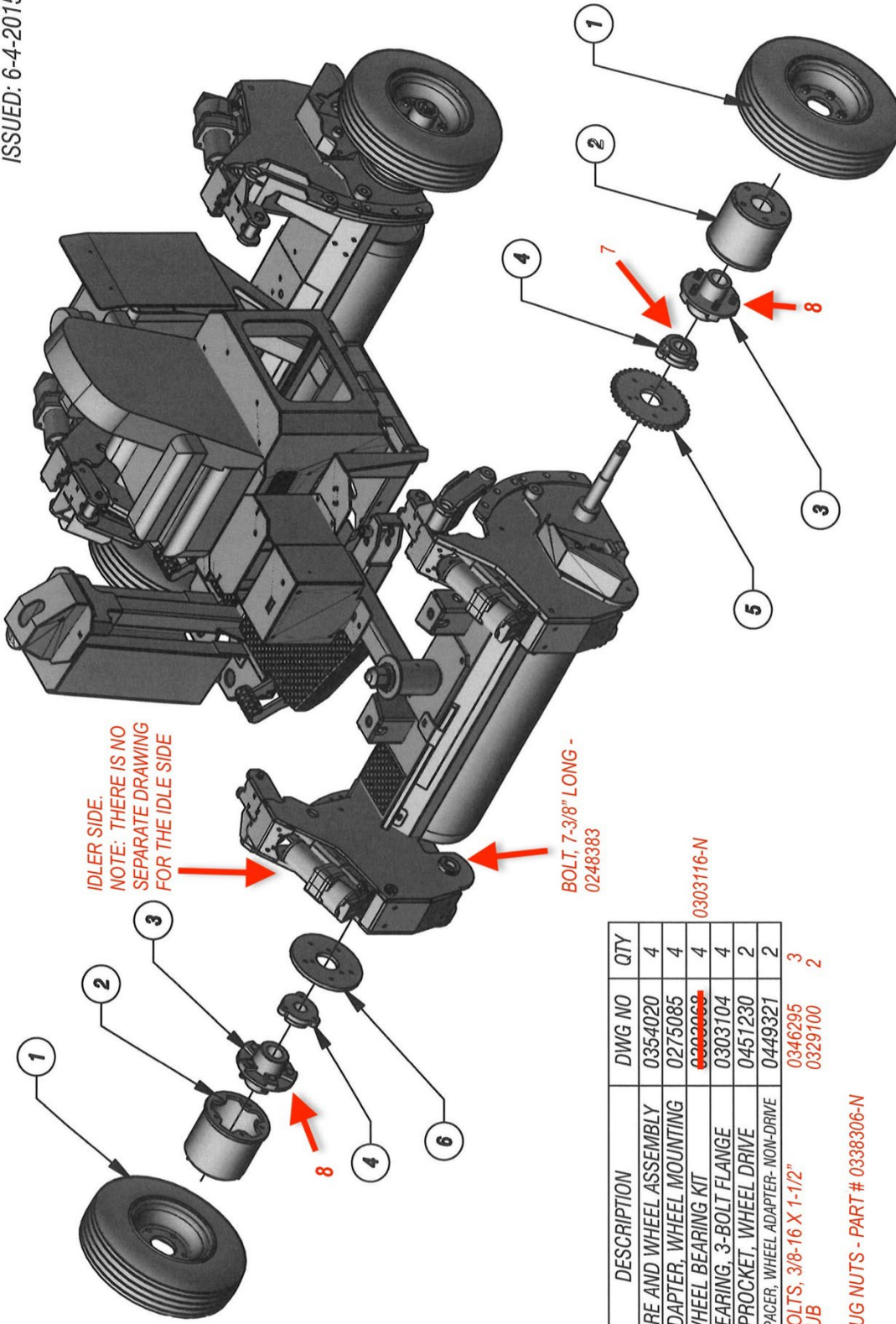
CORRECTION DATE 3-1-2023

ITEM	DESCRIPTION	DWG NO	QTY
1	ENGINE, 13HP HONDA	0337033	1
2	HOUSING, BELL CAST PUMP MOUNTING	0328059	1
3	SUPPORT, HYDRAULIC PUMP	0477231	1
4	BRACKET, NEUTRAL SWITCH MOUNTING	0488046	1
5	SWITCH, SNAP ACTION- 15 AMP	0315375	1
6	PUMP, HYDRAULIC- w/ AUXILIARY PUMP	0330250	1
7	LEVER, HYDRAULIC PUMP- REAR DRIVE	0433251	1
8	D.O.M. TUBE- 3/8" I.D. x 5/8 O.D. x 11/16 LG.	0313081	1
9	COUPLING, HUB 17mm BORE	0313081	1
10	COUPLING, SPIDER	0313004	1
11	COUPLING, HUB 1" BORE	0313003	1
12	MOUNT, VIBRATION CONTROL	0376319	4
13	PLATE, ENGINE MOUNT	0462462	1
14	RUBBER SANDWICH MOUNT	0376250	1
15	AUXILLIARY PUMP ONLY	0330266	1



GAS GREENS ROLLER ROLL-N-GO-EHA DWG #7

ISSUED: 6-4-2015



IDLER SIDE.
NOTE: THERE IS NO
SEPARATE DRAWING
FOR THE IDLER SIDE

BOLT, 7-3/8" LONG -
0248383

0303116-N

ITEM	DESCRIPTION	DWG NO	QTY
1	TIRE AND WHEEL ASSEMBLY	0354020	4
2	ADAPTER, WHEEL MOUNTING	0275085	4
3	WHEEL BEARING KIT	0303069	4
4	BEARING, 3-BOLT FLANGE	0303104	4
5	SPROCKET, WHEEL DRIVE	0451230	2
6	SPACER, WHEEL ADAPTER-NON-DRIVE	0449321	2
7	BOLTS, 3/8-16 X 1-1/2"	0346295	3
8	HUB	0329100	2

LUG NUTS - PART # 0338306-N

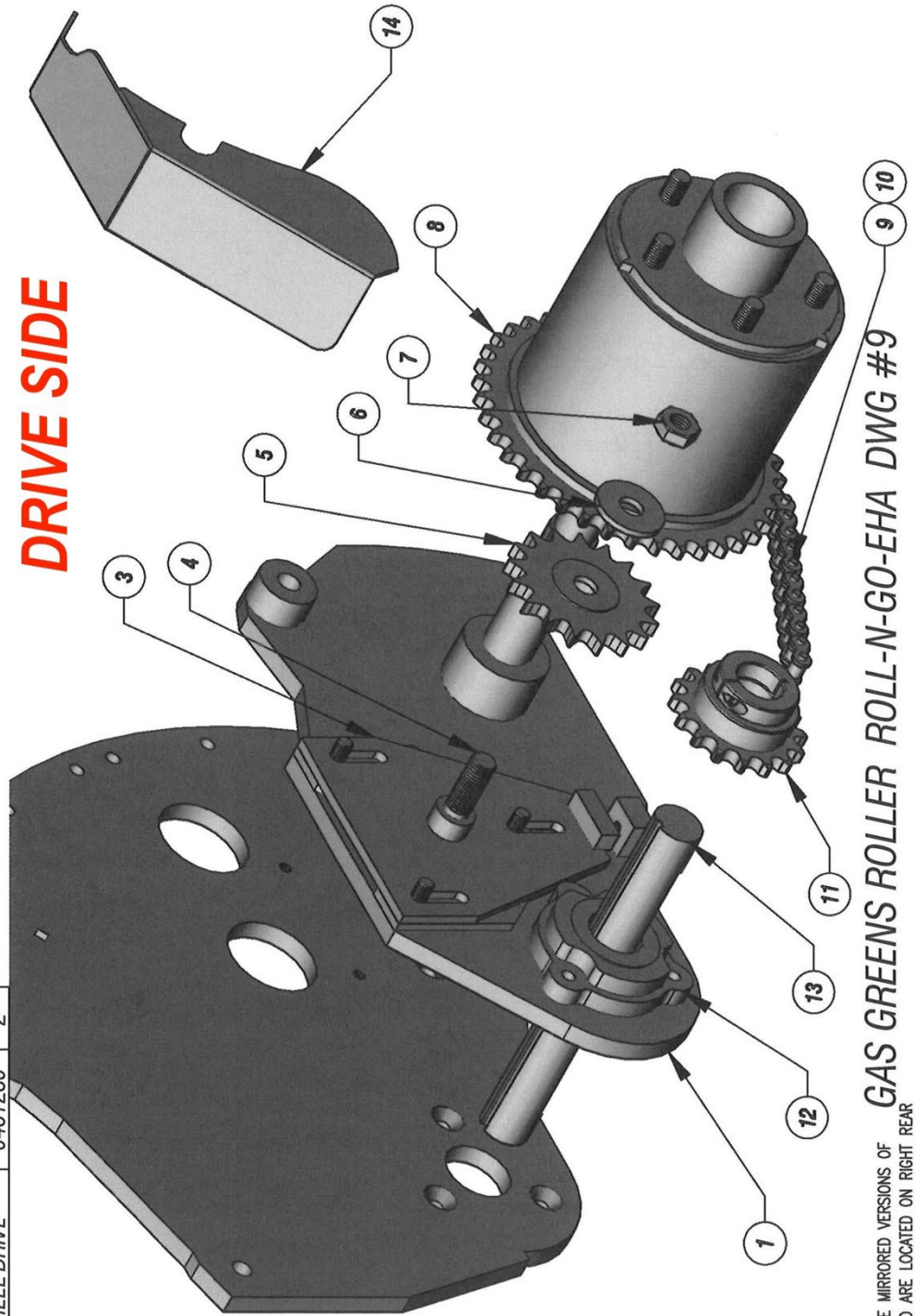
GAS GREENS ROLLER ROLL-N-GO-EHA DWG #8

ISSUED: 6-4-2015
 CORRECTION
 DATE: 3-1-2023

ITEM	DESCRIPTION	DWG NO	QTY
9	ROLLER CHAIN- #50H6T PITCHES	0309024	2
10	MASTERLINK- #50HCHAIN	0309033	2
11	SPROCKET- #50BS16	0251245	2
12	BEARING, 3-BOLT FLANGE	0303104	4
13	SHAFT, IDLER- DRIVE SIDE	0448377	2
14	GUARD, CHAIN- LEFT	0221642	1
15	GUARD, CHAIN- RIGHT	0221640	1

1/2 LINK, #50H
 0309034

DRIVE SIDE



NOTES:

-LEFT REAR AS SHOWN

-PARTS #2 AND #15 ARE MIRRORED VERSIONS OF

PARTS #1 AND #14 AND ARE LOCATED ON RIGHT REAR

GAS GREENS ROLLER ROLL-N-GO-EHA DWG #9

ITEM	DESCRIPTION	DWG NO	QTY	ITEM	DESCRIPTION	DWG NO	QTY
*1	MOTOR, HYDRAULIC	0330139	2	9	SPROCKET- #50BTB32	0351212	2
2	COLLAR, SPLIT- 1 1/4" I.D.	0311020	2	10	HHCS- 1/4-20 x 1/2" LG.	0346004	2
3	SHAFT, IDLER- DRIVE SIDE	0448377	2	11	WASHER, LOCK- 1/4" B146 SPLIT	0353001	2
4	BEARING, 3-BOLT FLANGE	0303104	4				
5	ROLLER CHAIN- #50 M65 PITCHES	0309095	2				
6	MASTER LINK- #50 CH CHAIN	0309000	2				
**7	SPROCKET- #50BS20 x 1 1/4" BORE	0251227	2				
***8	SPROCKET- #50BS20 x 1" BORE	0251194	2				

ISSUED: 6-5-2015
CORRECTION
DATE 3-1-2023

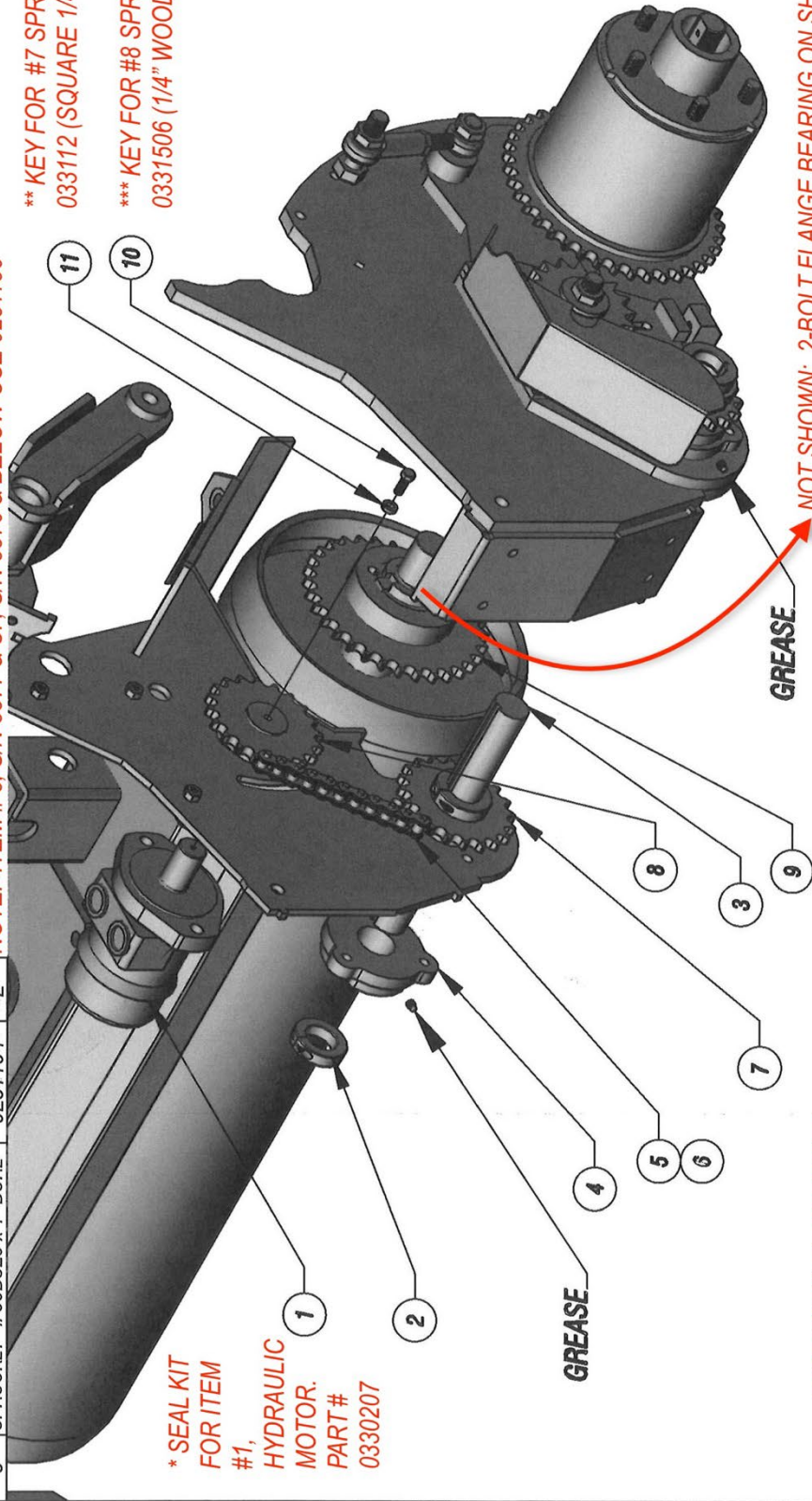
S/N 3377 & HIGHER
0346070
0353011

NOTE: ITEM #9, BUSHING REQUIRED PART # 0351213

0309033

NOTE: ITEM #8, S/N 3377 & UP S/N 3376 & BELOW USE 0251186

** KEY FOR #7 SPROCKET -
033112 (SQUARE 1/4" X 1")
*** KEY FOR #8 SPROCKET -
0331506 (1/4" WOODRUFF)



* SEAL KIT
FOR ITEM
#1,
HYDRAULIC
MOTOR.
PART #
0330207

GREASE

GREASE

NOT SHOWN: 2-BOLT FLANGE BEARING ON SHAFT
PART # 0303083, QTY. 4

DRIVE SIDE

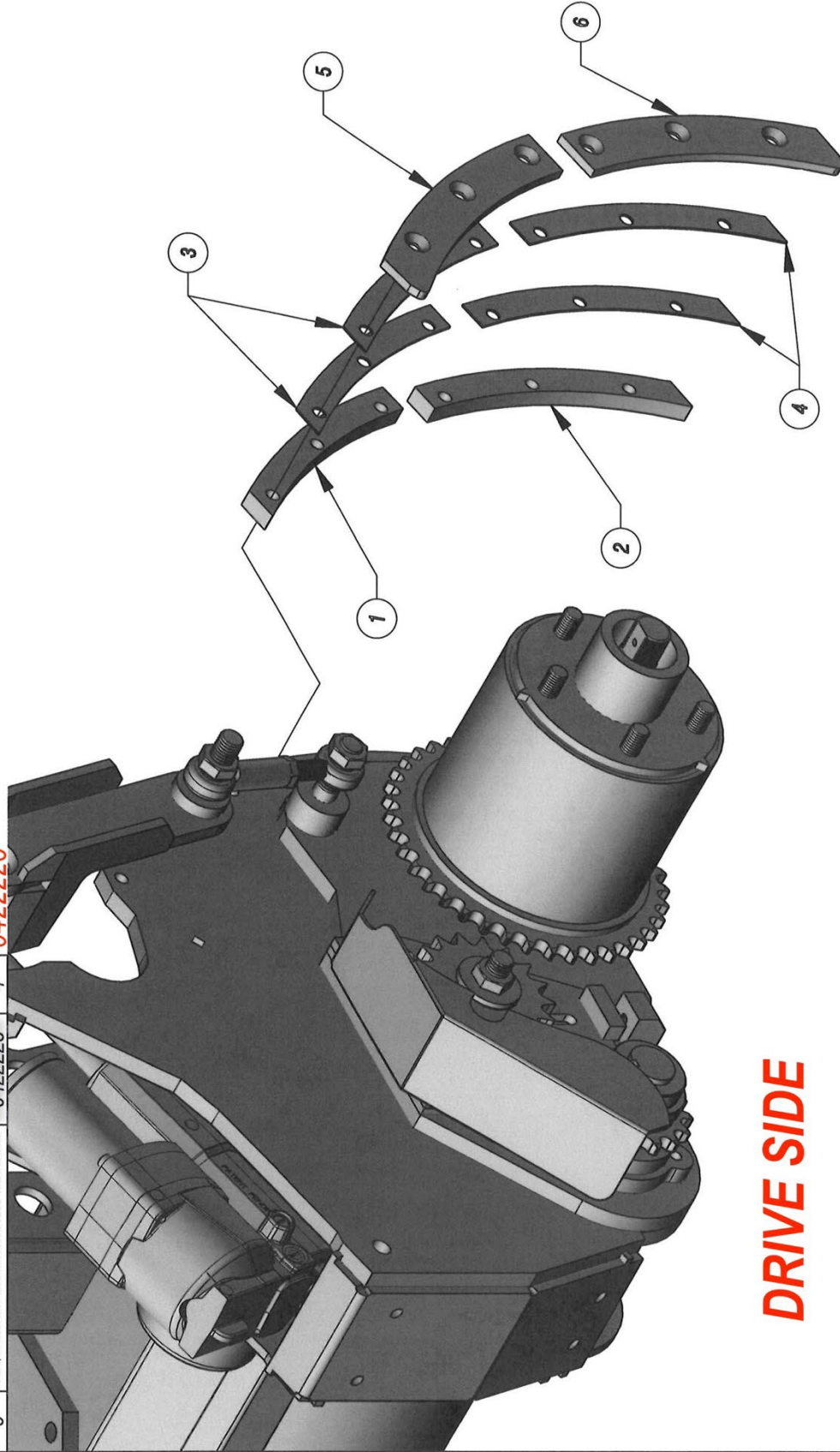
GAS GREENS ROLLER ROLL-N-GO-EHA DWG #10

ISSUED: 6-8-2015

CORRECTION DATE: 3-1-2023

ITEM	DESCRIPTION	DWG NO	QTY
1	SPACER, WHEEL PIVOT MOUNTING ARM- 1/2" UPPER	0449317	4
2	SPACER, WHEEL PIVOT MOUNTING ARM- 1/2" LOWER	0449319	4
3	SPACER, WHEEL PIVOT MOUNTING ARM-20GA. UPPER	0449316	8
4	SPACER, WHEEL PIVOT MOUNTING ARM- 20GA. LOWER	0449318	8
5	GUIDE, WHEEL PIVOT MOUNTING ARM SLIDE- LEFT FACING	0422227	4
6	GUIDE, WHEEL PIVOT MOUNTING ARM SLIDE- RIGHT FACING	0422228	4

0422226



DRIVE SIDE

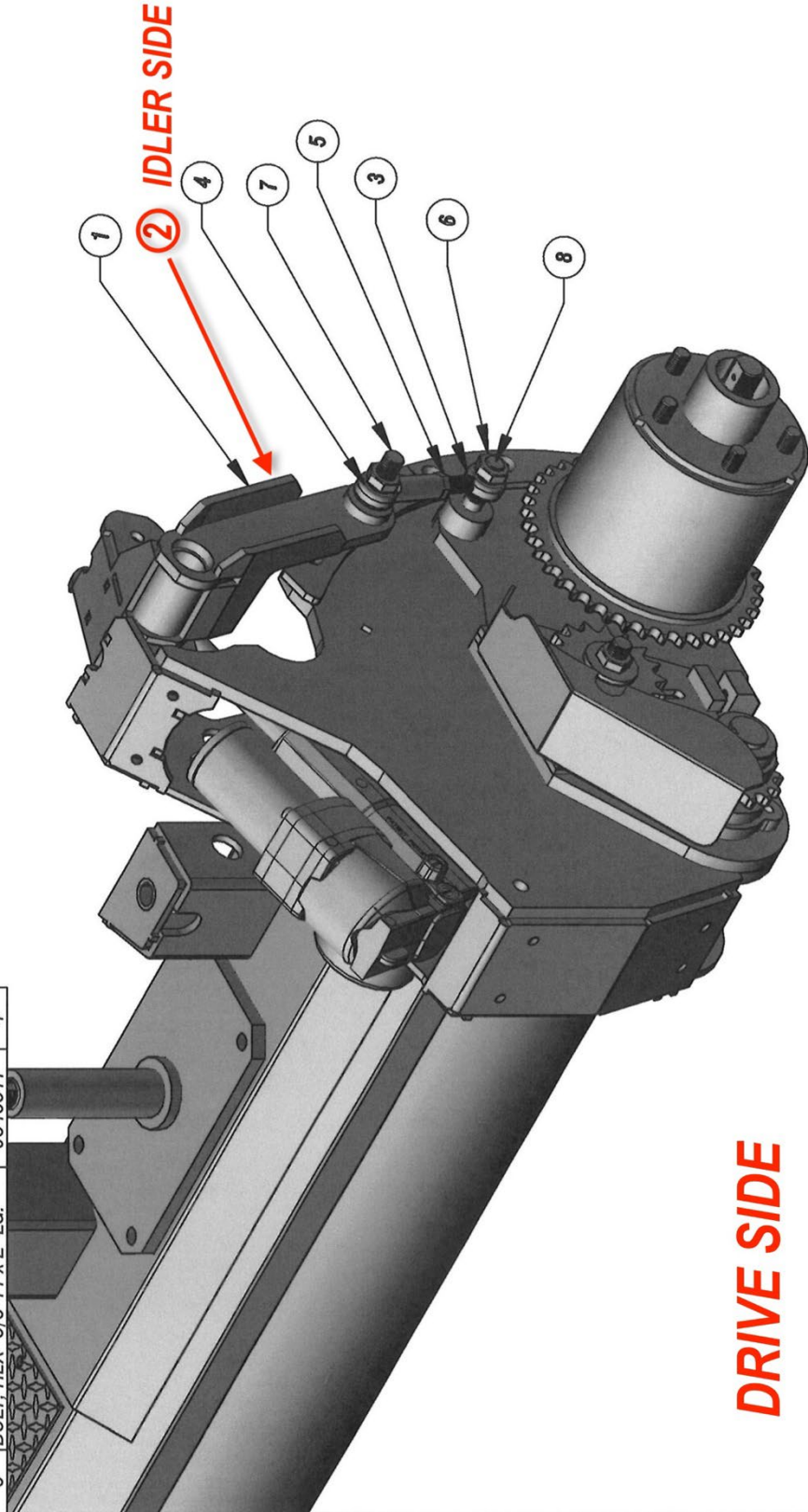
GAS GREENS ROLLER ROLL-N-GO-EHA DWG #11

ISSUED: 6-8-2015

CORRECTION DATE: 3-1-2023

ITEM	DESCRIPTION	DWG NO	QTY
1	LEVER, CYLINDER LIFT- RF & LR	0233308	2
2	LEVER, CYLINDER LIFT- LF & RR	0233307	2
3	BALL JOINT ROD END- 5/8-18 MALE	0303091	4
4	BALL JOINT ROD END- 5/8-18 FEMALE	0303093	4
5	NUT, HEX JAM- 5/8-18	0338061	4
6	NUT, HEX NYLOCK- THIN- 5/8-11	0338113	8
7	BOLT, HEX- 5/8-11 x 2 1/4" LG.	0346521	4
8	BOLT, HEX- 5/8-11 x 2" LG.	0346517	4

↑ DRIVE SIDE
↑ IDLER SIDE



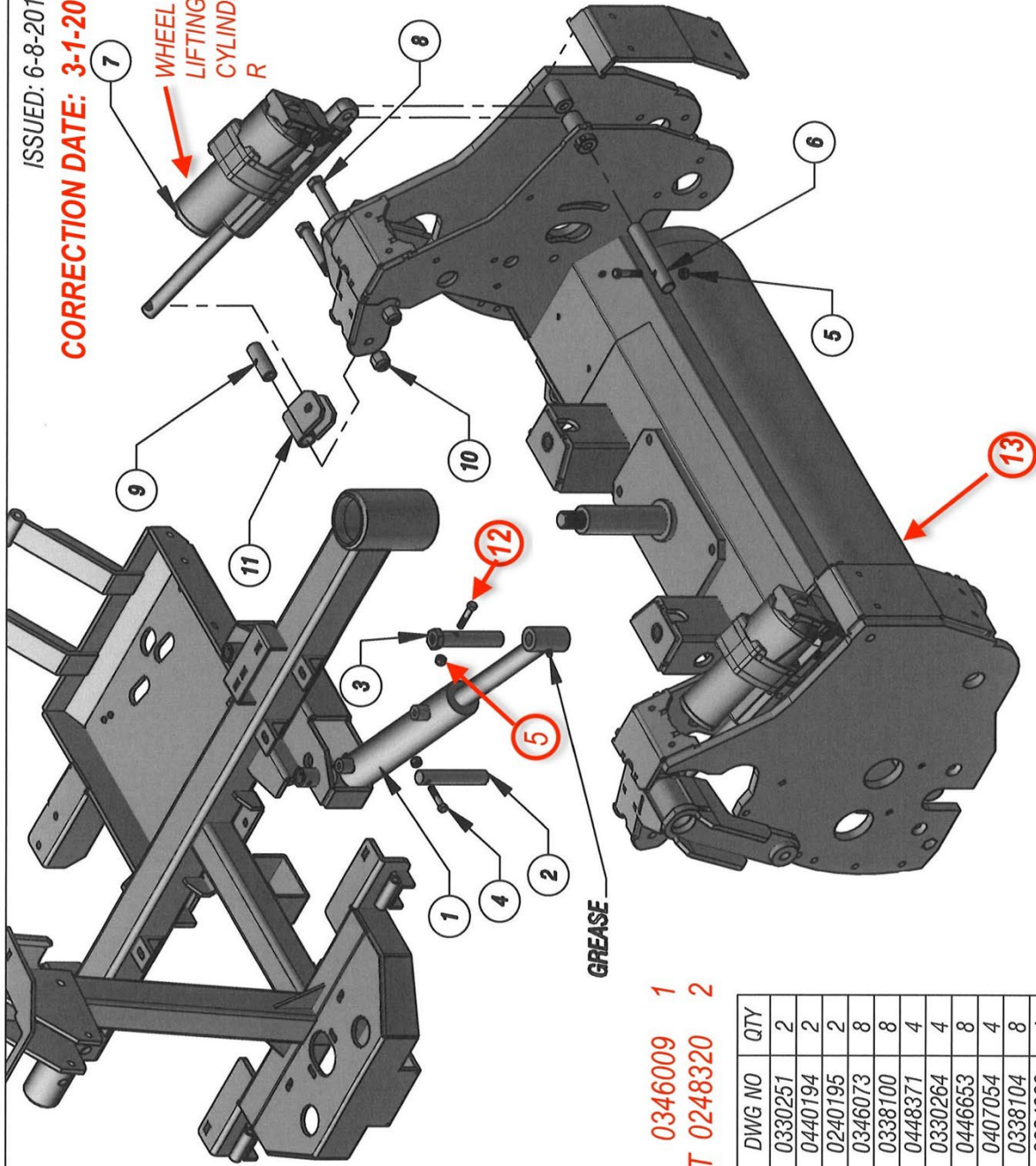
DRIVE SIDE

GAS GREENS ROLLER ROLL-N-GO-EHA DWG #12

NOTES:
-LEFT REAR AS SHOWN
-PART #2 IS A MIRRORED VERSION OF PART #1
AND IS LOCATED ON RIGHT REAR AND FRONT LEFT

ISSUED: 6-8-2015

CORRECTION DATE: 3-1-2023



- 12 BOLT 0346009 1**
- 13 ROLL REPLACEMENT 0248320 2**

ITEM	DESCRIPTION	DWG NO	QTY
1	HYDRAULIC CYLINDER- STEERING	0330251	2
2	PIN, STEERING CYLINDER MOUNT	0440194	2
3	PIN, ROLL HOUSING STEERING CYLINDER MOUNT	0240195	2
4	HEX HEAD CAP SCREW- 1/4-20 x 1 1/2" LG.	0346073	8
5	NUT, HEX- 1/4-20	0338100	8
6	SHAFT, WHEEL LIFTING CYLINDER PIVOT- LOWER	0448371	4
7	HYDRAULIC CYLINDER- ELECTRIC ACTUATED	0330264	4
8	BOLT, CYLINDER LIFT LEVER	0446653	8
9	BUSHING- CYLINDER LIFT LEVER PIVOT	0407054	4
10	NUT, HEX- 1/2-13	0338104	8
11	LINK, UPPER CYLINDER CLEVIS	0234080	4

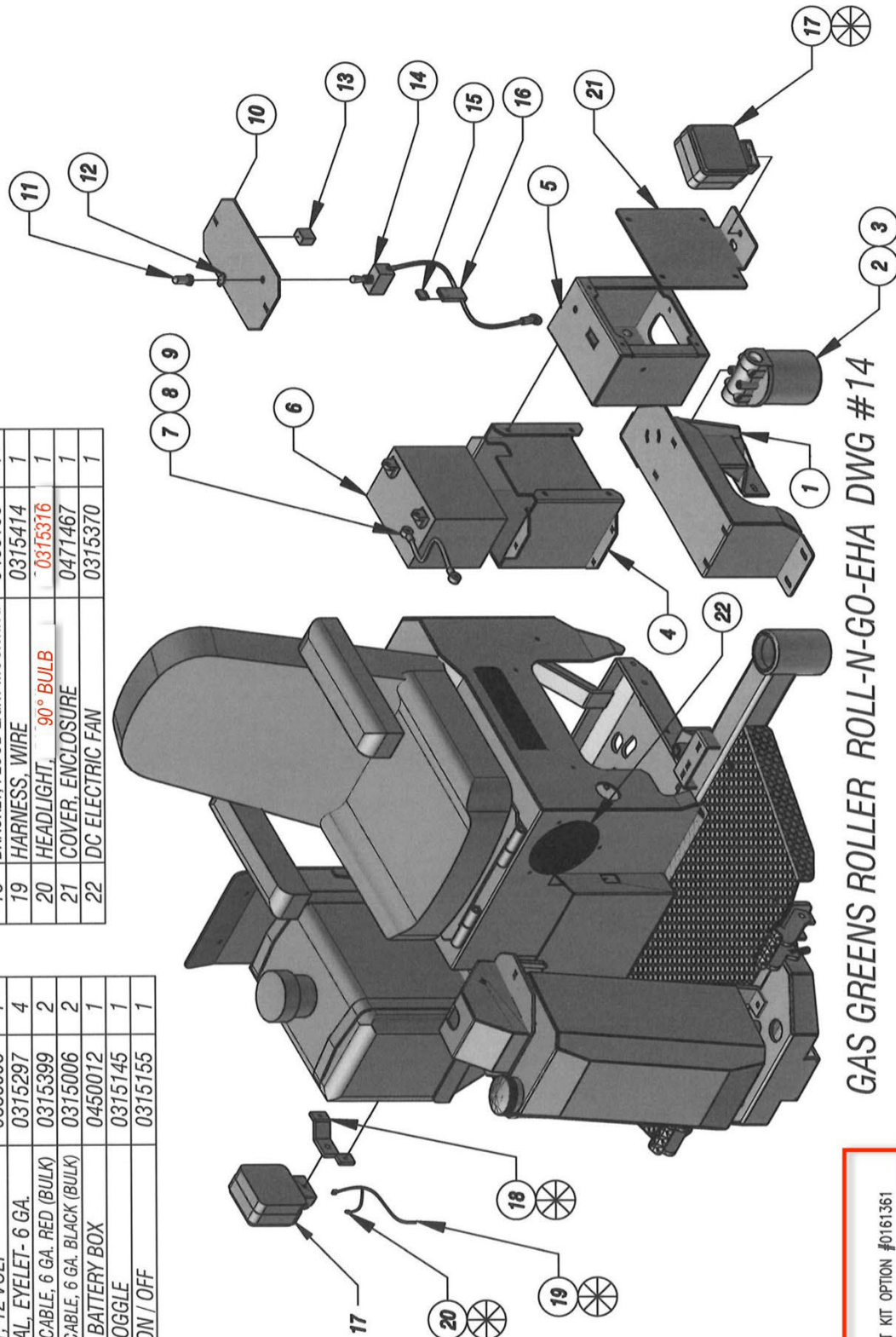
GAS GREENS ROLLER ROLL-N-GO-EHA DWG #13

ISSUED: 6-9-2015

CORRECTION DATE: 3-1-2023

ITEM	DESCRIPTION	DWG NO	QTY
13	RELAY, 12 VOLT	0315409	1
14	SWITCH, TOGGLE	0315143	1
15	FUSE, IN LINE	0315168	1
16	HOLDER, FUSE	0315167	1
17	FLOOD LIGHT, LED- RECTANGULAR	0315413	2
18	BRACKET, FLOOD LIGHT MOUNTING	0488153	1
19	HARNES, WIRE	0315414	1
20	HEADLIGHT, 90° BULB	0315376	1
21	COVER, ENCLOSURE	0471467	1
22	DC ELECTRIC FAN	0315370	1

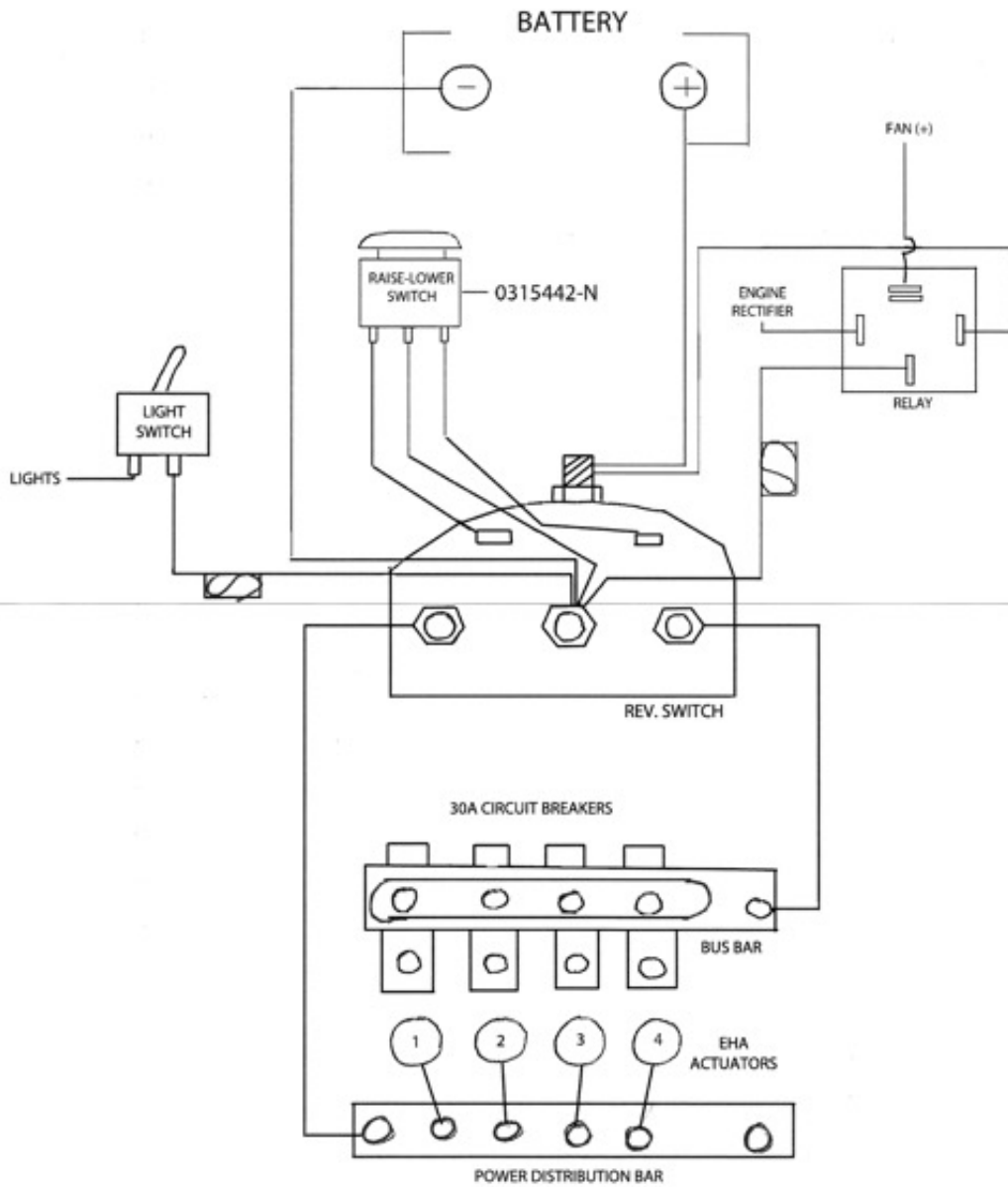
ITEM	DESCRIPTION	DWG NO	QTY
1	MOUNT, BATTERY BOX & OIL FILTER	0276985	1
2	FILTER HOUSING, HYDRAULIC OIL	0318039	1
3	FILTER, ELEMENT	0318023	1
4	BOX, BATTERY	0280074	1
5	BOX, CONTROL	0280075	1
6	BATTERY, 12 VOLT	0336008	1
7	TERMINAL, EYELET- 6 GA.	0315297	4
8	BATTERY CABLE, 6 GA. RED (BULK)	0315399	2
9	BATTERY CABLE, 6 GA. BLACK (BULK)	0315006	2
10	COVER, BATTERY BOX	0450012	1
11	BOOT, TOGGLE	0315145	1
12	PLATE, ON / OFF	0315155	1



GAS GREENS ROLLER ROLL-N-GO-EHA DWG #14

NOTES:
 PARTS OF LIGHT KIT OPTION #0161361

SWITCH & CYLINDERS - WIRE DIAGRAM ROLL-N-GO, EHA



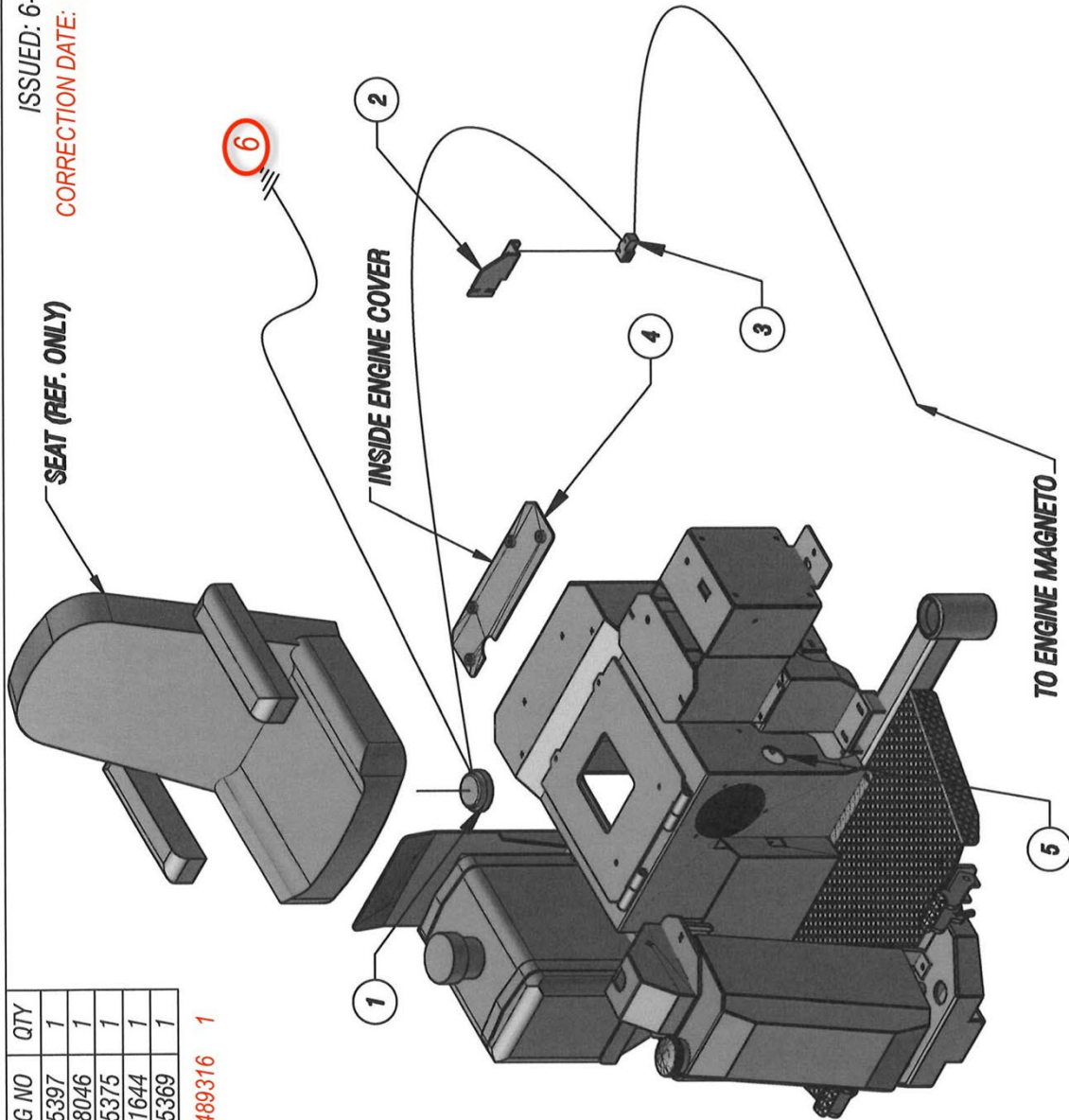
M.M. CONF.
6/2018

[Signature]

ISSUED: 6-9-2015
 CORRECTION DATE: 3-1-2023

ITEM	DESCRIPTION	DWG NO	QTY
1	SWITCH, SEAT	0315397	1
2	BRACKET, NEUTRAL SWITCH MOUNTING	0488046	1
3	SWITCH, SNAP ACTION	0315375	1
4	GUARD, ENGINE HEAT SHIELD	0221644	1
5	METER, HOUR	0315369	1

6 PAD, SEAT PRESSURE SENSOR 0489316 1

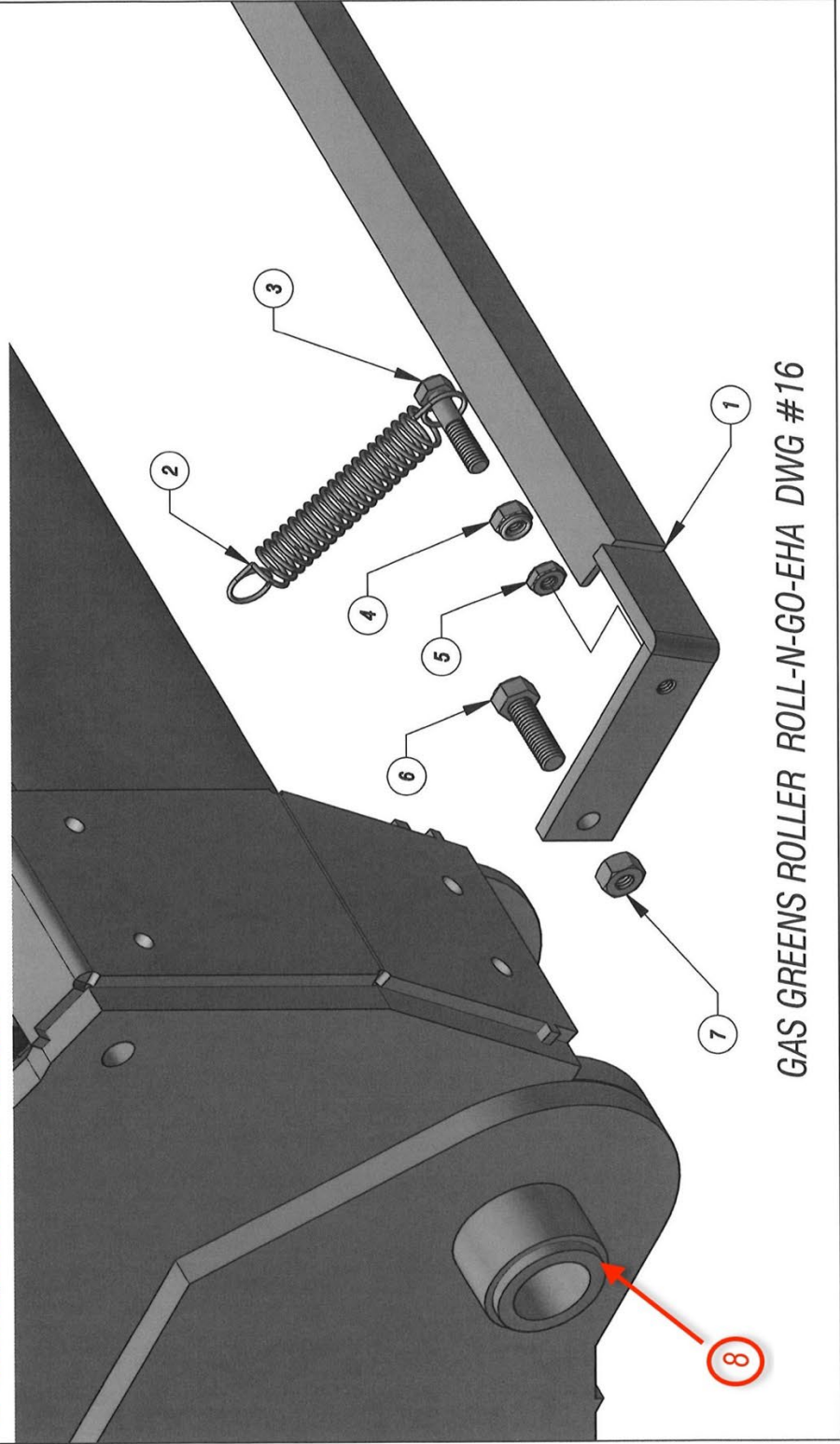


GAS GREENS ROLLER ROLL-N-GO-EHA DWG #15

ISSUED: 6-10-2015
CORRECTION DATE: 3-1-2023

ITEM	DESCRIPTION	DWG NO	QTY
1	SCRAPER ROLLER	0205169	2
2	SPRING, EXTENSION	0350033	4
3	HEX HEAD CAP SCREW- 5/16-18 x 1 1/2"	0346106	4
4	NUT, HEX NYLOCK- 5/16-18	0338101	4
5	NUT, HEX JAM- 5/16-18	0338051	4
6	HEX HEAD CAP SCREW- 3/8-16 x 1 1/4"	0346229	4
7	NUT, HEX- 3/8-16	0338003	4

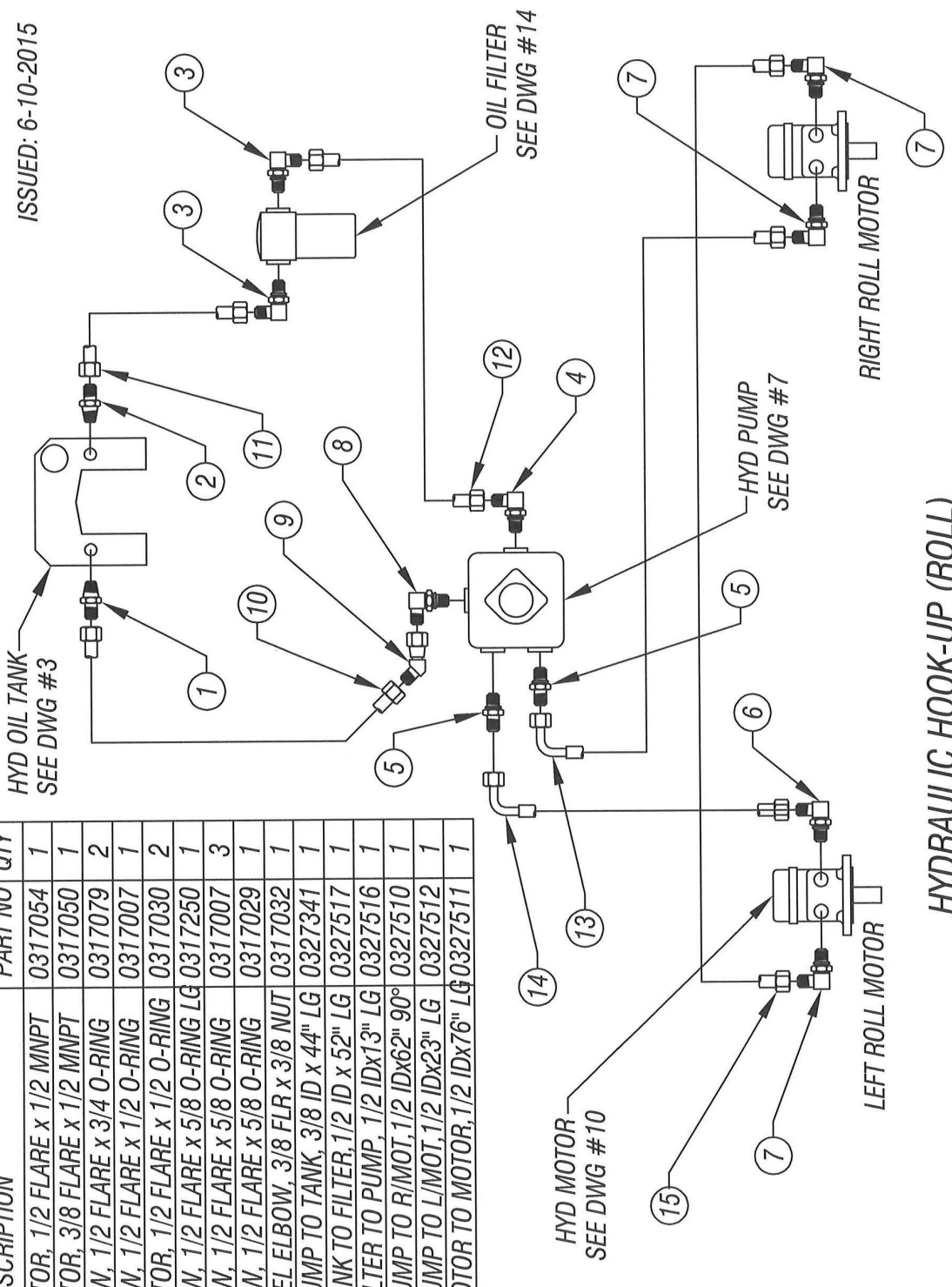
8 BUSHING, BRONZE OILITE 0307055 2



GAS GREENS ROLLER ROLL-N-GO-EHA DWG #16

ISSUED: 6-10-2015

ITEM	DESCRIPTION	PART NO	QTY
1	CONNECTOR, 1/2 FLARE x 1/2 MNPT	0317054	1
2	CONNECTOR, 3/8 FLARE x 1/2 MNPT	0317050	1
3	90° ELBOW, 1/2 FLARE x 3/4 O-RING	0317079	2
4	90° ELBOW, 1/2 FLARE x 1/2 O-RING	0317007	1
5	CONNECTOR, 1/2 FLARE x 1/2 O-RING	0317030	2
6	90° ELBOW, 1/2 FLARE x 5/8 O-RING LG	0317250	1
7	90° ELBOW, 1/2 FLARE x 5/8 O-RING	0317007	3
8	90° ELBOW, 1/2 FLARE x 5/8 O-RING	0317029	1
9	45° SWIVEL ELBOW, 3/8 FLR x 3/8 NUT	0317032	1
10	HOSE, PUMP TO TANK, 3/8 ID x 44" LG	0327341	1
11	HOSE, TANK TO FILTER, 1/2 ID x 52" LG	0327517	1
12	HOSE, FILTER TO PUMP, 1/2 ID x 13" LG	0327516	1
13	HOSE, PUMP TO R/MOT, 1/2 ID x 62" 90°	0327510	1
14	HOSE, PUMP TO L/MOT, 1/2 ID x 23" LG	0327512	1
15	HOSE, MOTOR TO MOTOR, 1/2 ID x 76" LG	0327511	1

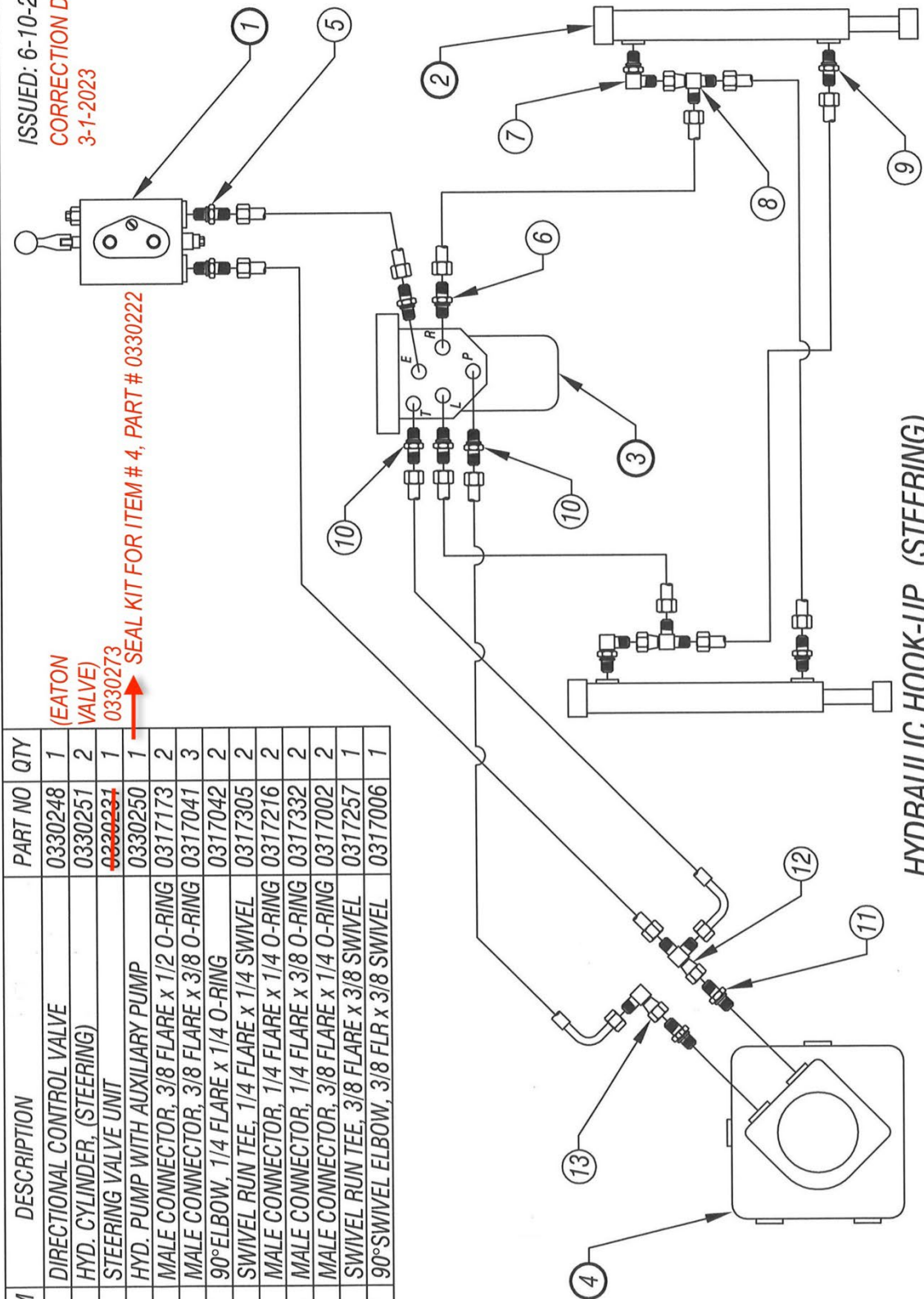


**HYDRAULIC HOOK-UP (ROLL)
COMPONENTS, FITTINGS & HOSES
GAS GREENS ROLLER ROLL-N-GO-EHA - DWG #17**

ISSUED: 6-10-2015
CORRECTION DATE:
3-1-2023

ITEM	DESCRIPTION	PART NO	QTY
1	DIRECTIONAL CONTROL VALVE	0330248	1
2	HYD. CYLINDER, (STEERING)	0330251	2
3	STEERING VALVE UNIT	0330231 0330273	1
4	HYD. PUMP WITH AUXILIARY PUMP	0330250	1
5	MALE CONNECTOR, 3/8 FLARE x 1/2 O-RING	0317173	2
6	MALE CONNECTOR, 3/8 FLARE x 3/8 O-RING	0317041	3
7	90° ELBOW, 1/4 FLARE x 1/4 O-RING	0317042	2
8	SWIVEL RUN TEE, 1/4 FLARE x 1/4 SWIVEL	0317305	2
9	MALE CONNECTOR, 1/4 FLARE x 1/4 O-RING	0317216	2
10	MALE CONNECTOR, 1/4 FLARE x 3/8 O-RING	0317332	2
11	MALE CONNECTOR, 3/8 FLARE x 1/4 O-RING	0317002	2
12	SWIVEL RUN TEE, 3/8 FLARE x 3/8 SWIVEL	0317257	1
13	90° SWIVEL ELBOW, 3/8 FLR x 3/8 SWIVEL	0317006	1

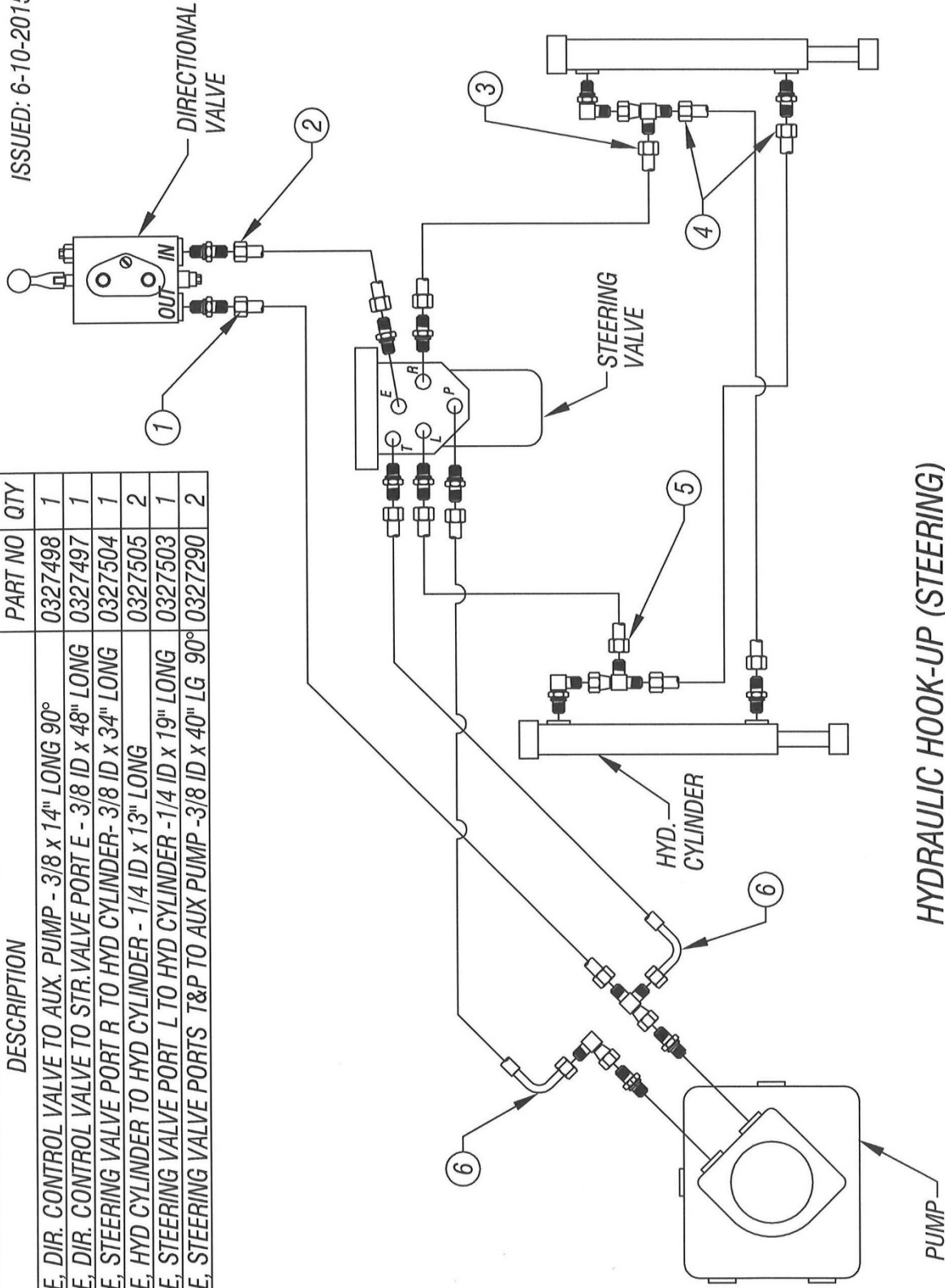
(EATON VALVE)
SEAL KIT FOR ITEM # 4, PART # 0330222



HYDRAULIC HOOK-UP (STEERING)
COMPONENTS AND FITTINGS
GAS GREENS ROLLER ROLL-N-GO-EHA - DWG #18

ISSUED: 6-10-2015

ITEM	DESCRIPTION	PART NO	QTY
1	HOSE, DIR. CONTROL VALVE TO AUX. PUMP - 3/8 x 14" LONG 90°	0327498	1
2	HOSE, DIR. CONTROL VALVE TO STR. VALVE PORT E - 3/8 ID x 48" LONG	0327497	1
3	HOSE, STEERING VALVE PORT R TO HYD CYLINDER- 3/8 ID x 34" LONG	0327504	1
4	HOSE, HYD CYLINDER TO HYD CYLINDER - 1/4 ID x 13" LONG	0327505	2
5	HOSE, STEERING VALVE PORT L TO HYD CYLINDER - 1/4 ID x 19" LONG	0327503	1
6	HOSE, STEERING VALVE PORTS T&P TO AUX PUMP - 3/8 ID x 40" LG 90°	0327290	2



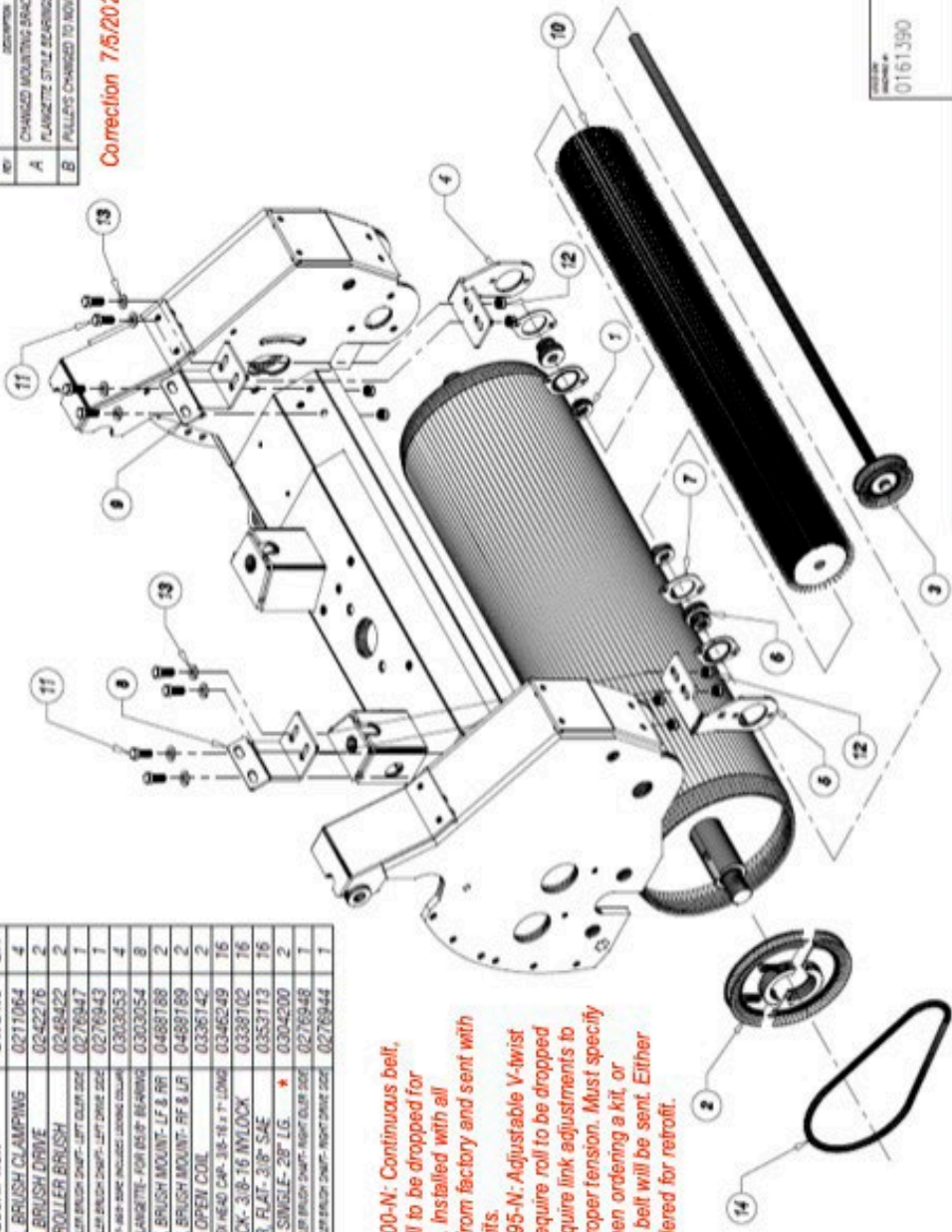
HYDRAULIC HOOK-UP (STEERING)
 HYDRAULIC HOSES
 GAS GREENS ROLLER ROLL-N-GO-EHA - DWG #19

REV	DESCRIPTION	DATE
A	CHANGED MOUNTING BRACKETS TO USE FLANGETTE STYLE BEARINGS	11/17/16 R.A.J.
B	PULLERS CHANGED TO 10014 SPRT STEEL TYPE BRUSH R.A.J.	

Correction 7/5/2022

ITEM	DESCRIPTION	DWG NO	QTY
1	COLLAR, BRUSH CLAMPING	0211064	4
2	PULLEY, BRUSH DRIVE	0242276	2
3	SHAFT, ROLLER BRUSH	0245822	2
4	MOUNT, ROLLER BRUSH SHAF- LEFT DRIVE SIDE	0276947	1
5	MOUNT, ROLLER BRUSH SHAF- LEFT DRIVE SIDE	0276943	1
6	WASHER, HEAD SHAF INCLUDES LOCKING COLLAR	0303053	4
7	BEARING FLANGETTE- FOR 65/8" BEARING	0303054	8
8	BRACKET, BRUSH MOUNT- LF & RR	0468168	2
9	BRACKET, BRUSH MOUNT- RF & LR	0468169	2
10	BRUSH, OPEN COIL	0336142	2
11	SCREW, HDX HEAD CAP- 3/8-16 x 1" LONG	0346249	16
12	NUT, LOCK- 3/8-16 IN LOCK	0338102	16
13	WASHER, FLAT- 3/8" SAE	0353113	16
14	V-BELT- SINGLE- 28" LG. ★	0304200	2
15	MOUNT, ROLLER BRUSH SHAF- RIGHT DRIVE SIDE	0276948	1
16	MOUNT, ROLLER BRUSH SHAF- RIGHT DRIVE SIDE	0276944	1

*** NOTE:**
 Belt 0304200-N: Continuous belt, requires roll to be dropped for installation. Installed with all machines from factory and sent with all retrofit kits.
 Belt 0404195-N: Adjustable V-twist belt does require roll to be dropped but may require link adjustments to maintain proper tension. Must specify this belt when ordering a kit, or continuous belt will be sent. Either may be ordered for retrofit.



MODEL # 0161390 OPTION, ROTARY BRUSH SYSTEM FOR 0009100 #RP11-WT(ROLL-N-00)	PART # 0161390
DATE 6/22/15	PART NAME ROTARY BRUSH SYSTEM
DRAWN BY SALSCO	QTY 2
PART OF EQUIPMENT SEE ITEM DESCRIPTIONS	REV B

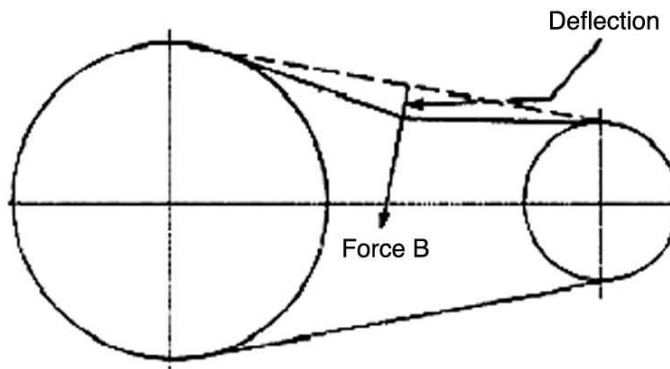
NOTES:
 -LEFT ROLL
 -ITEM #s 15 & 16 ARE REVERSED VERSIONS OF ITEM #s 4 & 5 FOR THE OPPOSITE (RIGHT) ROLL

Below is a quick reference chart for various “Flat Head Cap Screws” and the torque recommendations.

VALUES ARE STATED IN FOOT POUNDS

BOLT SIZE	Thds Per Inch	SAE Grade 5	SAE Grade 8
1/4	20	10	14
	28	---	---
5/16	18	19	29
	24	---	---
3/8	16	33	47
	24	---	---
7/16	14	54	78
	20	---	---
1/2	13	78	119
	20	---	---
9/16	12	114	169
	18	---	---
5/8	11	154	230
	11	---	---
3/4	10	257	380
	10	---	---
7/8	9	382	600
	9	---	---
1	8	587	700
	8	---	---

Drive Belt Tension Measurement by Deflection



Deflection should be 3/8" when 8-12 lbs. push is applied at "B"

GAS GREENS ROLLER SERVICE INTERVAL SCHEDULE

After ___ hours / Daily / Weekly / Yearly / See vendor manual

ENGINE - Check Honda service manual for recommended service intervals.

	H	D	W	Y	MANUAL
Check oil level		X			
Change oil	500				
Change oil filter	500				
Change fuel filter	500				
Check all for leaks		X			

HYDRAULIC SYSTEM

	H	D	W	Y	MANUAL
Grease hydraulic cylinders, pins, etc. where applicable			X		
Check for leaks (all hoses and fittings at both hose ends)		X			
Check hydraulic oil level ... <i>only if you see leaks</i>					
Change hydraulic oil First 500	1000				
Change hydraulic oil filter First 500	1000				
Inspect hoses for chafing, cracks, etc. and assure nothing impedes		X			

ADJUSTMENTS & DRIVES

	H	D	W	Y	MANUAL
Check all nuts, bolts, other fasteners for tightness			X		
Check chains for proper lubrication, wear, and tension			X		
Check belts for proper wear and tension (is belt dressing recommended?)			X		
Grease bearings, cylinders, steering shaft (is this a sealed bearing?)			X		

TRAILER

	H	D	W	Y	MANUAL
Check tire pressure (recommended pressure)			X		
Inspect tires for dry rot, tread wear, damage, etc.		X			
Grease axle and wheel hubs				X	

RECOMMENDED OIL - Fill within 6" of the top to avoid overflow when it gets hot.

Models 09065 / 09067	AW68 Hydraulic Oil
HP11	AW68 Hydraulic Oil
HP5.5	AW68 Hydraulic Oil
HP11-III	15-50 Motor Oil
Roll-n-Go, EHA	15-50 Motor Oil
Tranz-Former, EHA 5-G	10-40 Motor Oil

CUSTOMER SUPPORT

Contact Customer Support

SALSCO

105 Schoolhouse Road

Cheshire, CT 06410 USA

800-872-5726, 203-271-1682

203-271-2596 (Fax)

www.salsco.com

Registration and Warranty Information

www.salsco.com/register