

**Quality of Workmanship  
Innovative Design  
Built to Last!**



## MODEL HP11-III ROLLER Operators And Parts Manual



---

### MANUFACTURER OF OUTDOOR POWER EQUIPMENT

Products for Turf & Lawncare, Rental, Construction, Tree Care, Wood Processing, Nursery & Farm Industries

**3-1/2" - 18" Capacity, Gas, Diesel, & PTO Wood/Brush Chippers - Slab Chippers**

**Gas, Electric & Tow Behind Rollers - Tranz-Former Roller - CRV Core Recovery Vehicle**

**Mini-Paver - Mini-Track Paver - Cobra Curbers - Scorpion Router - Concrete Paver**

**Chipper Shredder Vacuums - Tailgate & Truckloader Vacuums**

**9 cu. yds. - 50 cu. yds. Per Hour, Electric, PTO & Diesel Powered Shaving Mills**



105 Schoolhouse Road  
Cheshire, CT 06410 U.S.A.  
800-872-5726 (Toll Free), 203-271-1682, 203-271-2596 (Fax)  
[www.salsco.com](http://www.salsco.com), [sales@salsco.com](mailto:sales@salsco.com)

**TABLE OF CONTENTS**

**GAS GREENS ROLLER, MODEL HP11-III, 09107**

COVER & TABLE OF CONTENTS.....	Pages 1 – 2
STATEMENT OF FACT.....	Page 3
SPECIFICATIONS & OPTIONS.....	Page 4
SAFETY & OPERATING INSTRUCTIONS.....	Page 5
SERVICE & MAINTENANCE INSTRUCTIONS.....	Page 6
ROLLER PARTS DIAGRAMS.....	Pages 7 – 17
LIGHT KIT OPTION PARTS & WIRING DIAGRAM	Pages 8 - 9
HYDRAULIC COMPONENTS, DRIVE.....	Page 18
HYDRAULIC COMPONENTS, STEERING.....	Page 19
TRANSPORT TRAILER PARTS DIAGRAMS.....	Page 20 – 23
TOP DRESSING BRUSH KIT OPTION.....	Page 24
CROSS CONTAMINATION PREVENTION KIT OPTION.....	Pages 25 - 26
TORQUE CHARTS.....	Page 27
SERVICE SCHEDULE LOG.....	Page 28
CUSTOMER SUPPORT.....	Page 29

**SALSCO, INC.**

105 Schoolhouse Road  
Cheshire, CT 06410 USA  
800-872-5726, 203-271-1682  
203-271-2596 (Fax)  
[www.salsco.com](http://www.salsco.com), [sales@salsco.com](mailto:sales@salsco.com)

## **STATEMENT OF FACT**

You have just purchased the highest quality, most dependable, Gas Roller on the market today. This unit has the ability to meet exact standards and perform for years with minimum downtime. **HOWEVER**, it cannot read nor will it understand this manual no matter how long you leave it on top of the machine.

It is your responsibility to read and understand this manual; it is also your responsibility to be certain this information is passed along to anyone who is expected to operate this equipment. Should you choose not to read, understand and pass along the information provided you, please expect equipment failure and possible injuries to persons around this equipment.

For the safety of the operator, it is imperative that this manual is carefully read and understood.

Once you have read this manual, it is your responsibility to be sure that all new operators read and understand this manual, especially all cautions stated.

As a manufacturer of equipment, we have a responsibility to design a safe piece of equipment. NOTE: The important safeguards and instructions in this manual are not meant to cover all possible conditions and situations that may occur. It must be understood that common sense, caution, and care are factors, which cannot be built into any product. These factors must be supplied by the person(s) caring for and operating this equipment.

**ONLY YOU CAN PREVENT ACCIDENTS!**

## SPECIFICATIONS & OPTIONS

<b>ENGINE:</b>	13 HP Honda, electric start, rubber mounted to reduce vibration
<b>FUEL TANK:</b>	6 gallon CARB approved fuel tank
<b>CONTROLS:</b>	On/Off switch, choke & fuel
<b>HOURLY METER:</b>	Standard.
<b>BATTERY:</b>	12 Volt, 300 CCA, automotive type
<b>ENGINE COOLING FAN:</b>	Standard
<b>SEAT:</b>	Molded cushion with protective edge trim, neutral safety switch & forward/reverse slide adjustment.
<b>STEERING SYSTEM:</b>	All three roll housings articulate at different degrees of travel, which allows turning without bruising.
<b>STEERING WHEEL:</b>	13-1/4" diameter, automotive type, tilt steering wheel. Hydraulic.
<b>MAIN FRAME:</b>	2-1/2" x 2-1/2" x 1/8" steel square tube. Fully gusseted with continuous welds.
<b>DRIVE ROLLS:</b>	Three (3) oscillating steel rollers, driven for positive traction. One (1) - 10-3/4" diameter x 36" long, Two (2) - 10-3/4" diameter x 24" long with beveled ends. All rolls machined to within two thousandths of an inch concentricity guarantees a perfect roll.
<b>TRACTION DRIVE:</b>	Traction drive is accomplished by having all three rolls drive and float independently which allows for 100% roll to ground contact.
<b>CLIMBING TRACTION:</b>	Up to 40°
<b>BRAKES:</b>	Hydrostatic drive.
<b>HYDRAULIC COMPONENTS:</b>	One (1) heavy duty variable speed piston pump delivers oil to three (3) hydraulic motors that drive the rolls. <b>Hoses:</b> SAE JIC hose ends & fittings. 3,000 P.S.I. working, 12,000 P.S.I. burst. <b>Motors:</b> Three (3), one on each roll. <b>Pump:</b> One (1) Hydro-Gear 0.97 cubic inch displacement.
<b>ROLLING SWATH:</b>	73"
<b>SPEED:</b>	Variable, 0–11 MPH
<b>GROUND PRESSURE:</b>	7.0 P.S.I. without water, 9.2 P.S.I. with water
<b>TRANSPORT TRAILER:</b>	Dual lock latch split tailgate ramp with a full 1/4" thick traction mat on both the trailer box and tailgate with loading guides. <b>Axle:</b> Spindle type, with hub assemblies. <b>Tire/wheel assemblies:</b> Two (2) 18.5 x 8.5-8, 6 ply. <b>Hitch:</b> Farm type pin coupler, height adjustable. <b>Jack:</b> Bolt on, swivel jack stand with caster wheel.
<b>TRANSPORT TRAILER OPTION:</b>	Deflector Step helps prevent damage to the tires when the operator accidentally runs into an obstacle while towing the trailer
<b>GUARDS/DECALS:</b>	All moving parts guarded. Full set of safety decals.
<b>PAINT:</b>	Orange, polyester powder coat paint provides excellent outdoor weatherability and offers protection against ultraviolet discoloration. All parts painted separately.
<b>ROLLER OPTIONS:</b>	Rotary Brush System, Top Dressing Brush Kit, Light Kit, Arm Rest Seat
<b>ROLLER WEIGHT:</b>	1180 lbs.
<b>TRAILER WEIGHT:</b>	510 lbs.

Specifications & Options Subject with Change Without Notice - Rev. 9/28/2020

## **SAFETY INSTRUCTIONS**

1. **NEVER** leave unit running while unattended.
2. **NEVER** park on a green for any reason.
3. **NEVER** go down steep hills sideways. **ALWAYS** approach hills straight on.
4. **NEVER** change your mind mid-way down a steep incline. Once you've started down a steep incline, change direction only with the greatest of care and gentlest touch.
5. Allow engine to cool for several minutes before filling with fuel, since fuel tank is over the engine.

NOTE: HONDA ENGINES - ALWAYS TURN OFF THE FUEL SHUTOFF, WHEN THE ENGINE IS NOT RUNNING, i.e. WHEN IN TRANSPORT, STORAGE, ETC.

## **OPERATING INSTRUCTIONS**

1. Check that the unit has been serviced and all fluids are checked and topped off.
2. Check all hydraulic hose fittings.
3. Push fuel shut off switch to on position.
4. Push choke to full on position
5. Push throttle to just above idle.
6. Turn on/off switch to on position.
7. You should start engine while seated. Just reach down to engine controls. Keep feet off pedals. Hydrostatic drive should come to neutral when engine starts.
8. Pull rope and the engine will start. Hydrostatic transmission should come to neutral when engine is started. **REMEMBER: RIGHT PEDAL TO GO RIGHT, LEFT PEDAL TO GO LEFT.**
9. Slide choke to full off position.
10. Once unit is running at just above idle, push pedal down slowly. Unit will begin to move. Drive it out of trailer on to grass area.
11. Since the unit is hydrostatic, engine should run at full R.P.M. and speed should be controlled by pressure on the pedal.

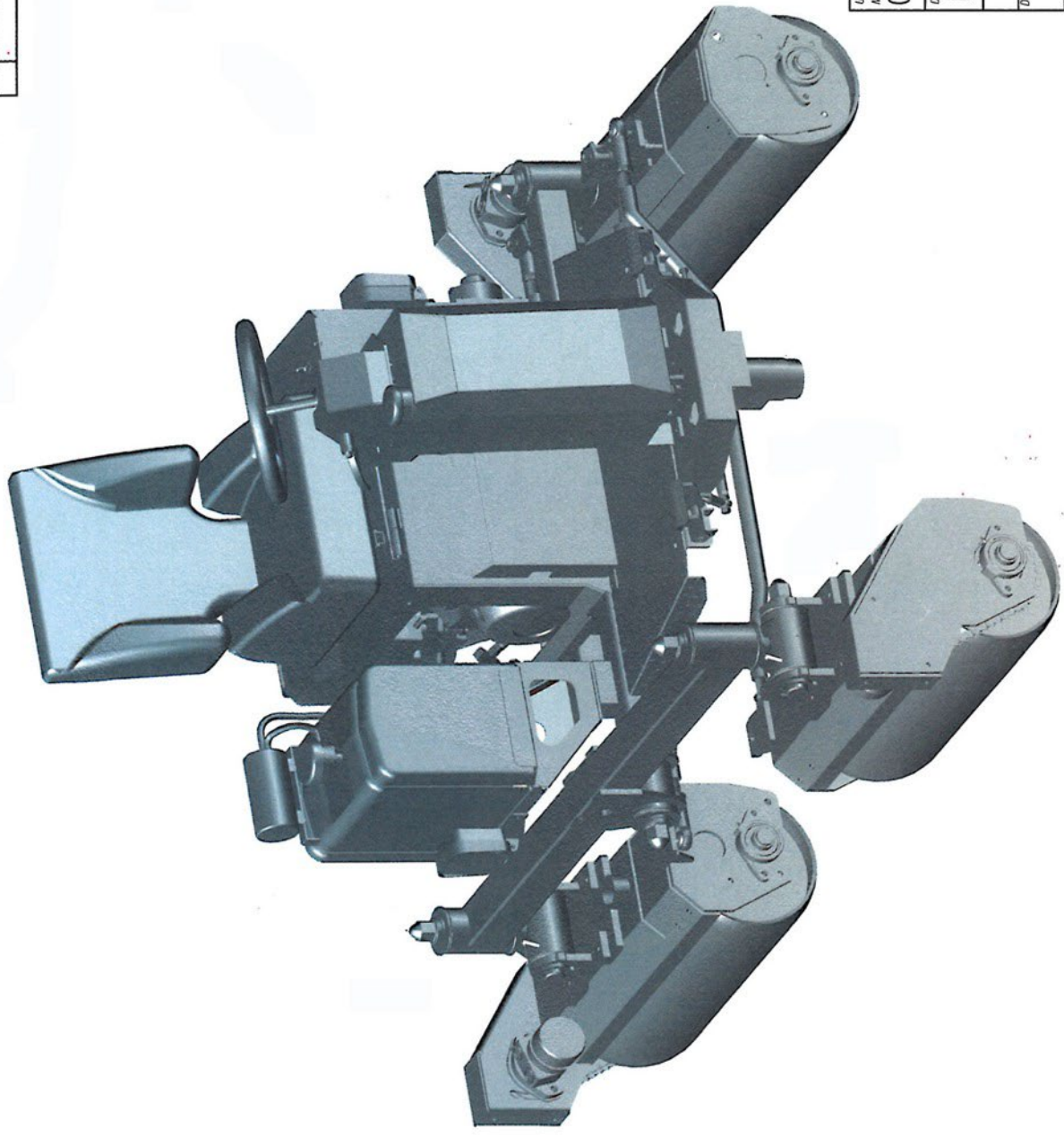
## **SERVICE & MAINTENANCE INSTRUCTIONS**

1. Check all hydraulic hoses **DAILY, or before each scheduled use**, for wear and any signs of chaffing. **REMINDER:** Drive motor hoses should be treated as wear items and should be replaced on a yearly basis.
2. Check all fittings for any signs of leaking **DAILY, or before each scheduled use**.
3. Check all grease fittings as listed below on a **WEEKLY** basis, and grease as necessary. (Add grease till grease leaks slightly from fitting.)
  - ◆ Bearings on roll housings
  - ◆ Pivot bearing on main housing
  - ◆ U-Joint on steering shaft
4. Check engine to manufacturers specifications and maintenance. **THIS ENGINE HAS AN OIL SHUT OFF SWITCH. CHECK OIL LEVEL FREQUENTLY AS THE UNIT WILL STALL ON INCLINES IF OIL LEVEL IS LOW.**
5. Fill hydraulic tank to 4-6" below filler cap. Be sure to tighten cap till cap seals.
6. After approximately **1 WEEK** of use, **and then every 2 WEEKS thereafter**, check drive chains - one on each side on roller drive motor. Pivot motor to tighten chain. **NOTE: Check and adjust the tension of drive motor chains on a regular basis. If chains are not tight, this could cause severe sprocket wear and possible breakage.**
7. After approximately **1 WEEK** of use, **and then every 2 WEEKS thereafter**, check chains on steering. Adjust as needed.
8. Pivot for articulating steering should be tight, **with no play**, much the same as wheel bearings on cars.
9. **Keep unit clean.** Should rust form on rolls, simply drive the unit on a rough area till rolls are clean.

**Oil & Filter Type** - It has been determined that your Salsco machine will perform better by using a 25 micron filter. See drawing #2 for part numbers. Hydraulic oil recommendation: MOBIL 1, 15W-50, FULL SYNTHETIC MOTOR OIL

**SAFETY IS A PRIME CONCERN AT SALSCO AND THE SAFETY DECALS ON YOUR MACHINE ARE A HIGHLY VISIBLE AND CONSTANT REMINDER TO ALL OPERATORS. REPLACEMENT SAFETY DECALS MAY BE OBTAINED BY CALLING SALSCO @ 1-800-872-5726, OR THE DEALER IN YOUR AREA.**

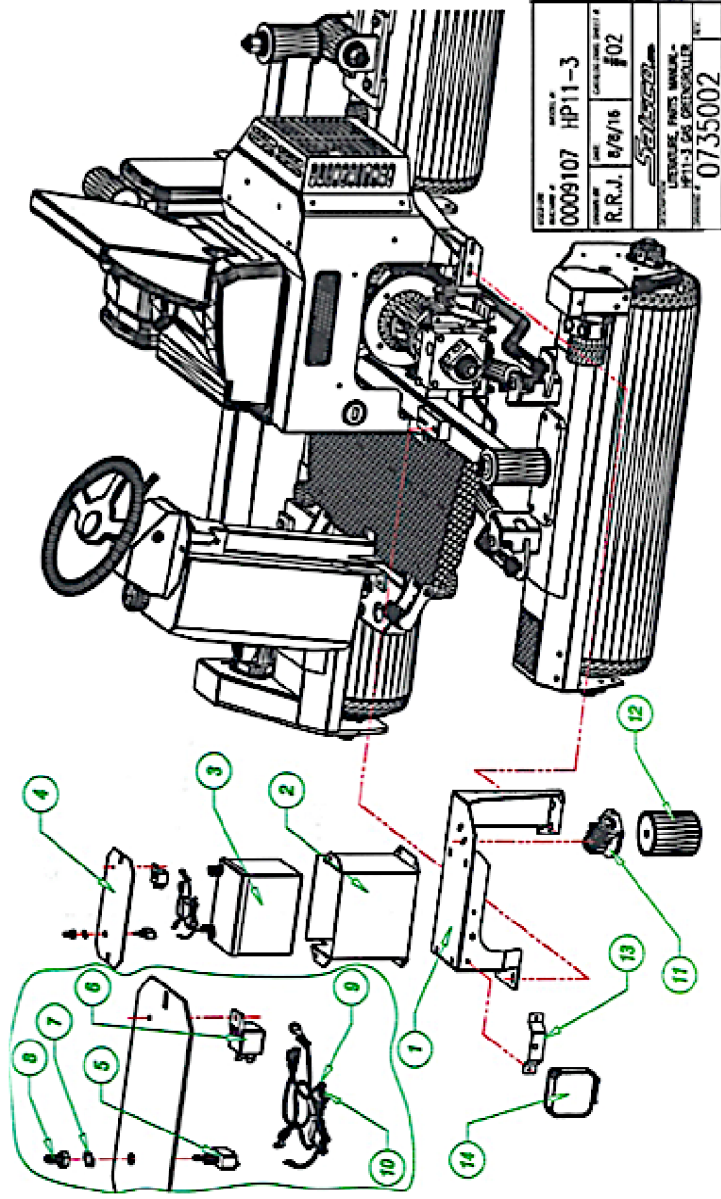
REVISIONS		DATE
REV	DESCRIPTION	



USED ON:	MODEL #:	
MACHINE #:	0009107	HP11-3
DRAWN BY:	DATE:	CATALOG DWG. SHEET #:
R.R.J.	8/3/16	#01
<b>SEISECO</b>		
DESCRIPTION:		
LITERATURE, PARTS MANUAL -		
HP11-3 GAS GREENROLLER		
DRAWING #:	REV:	
0735002		

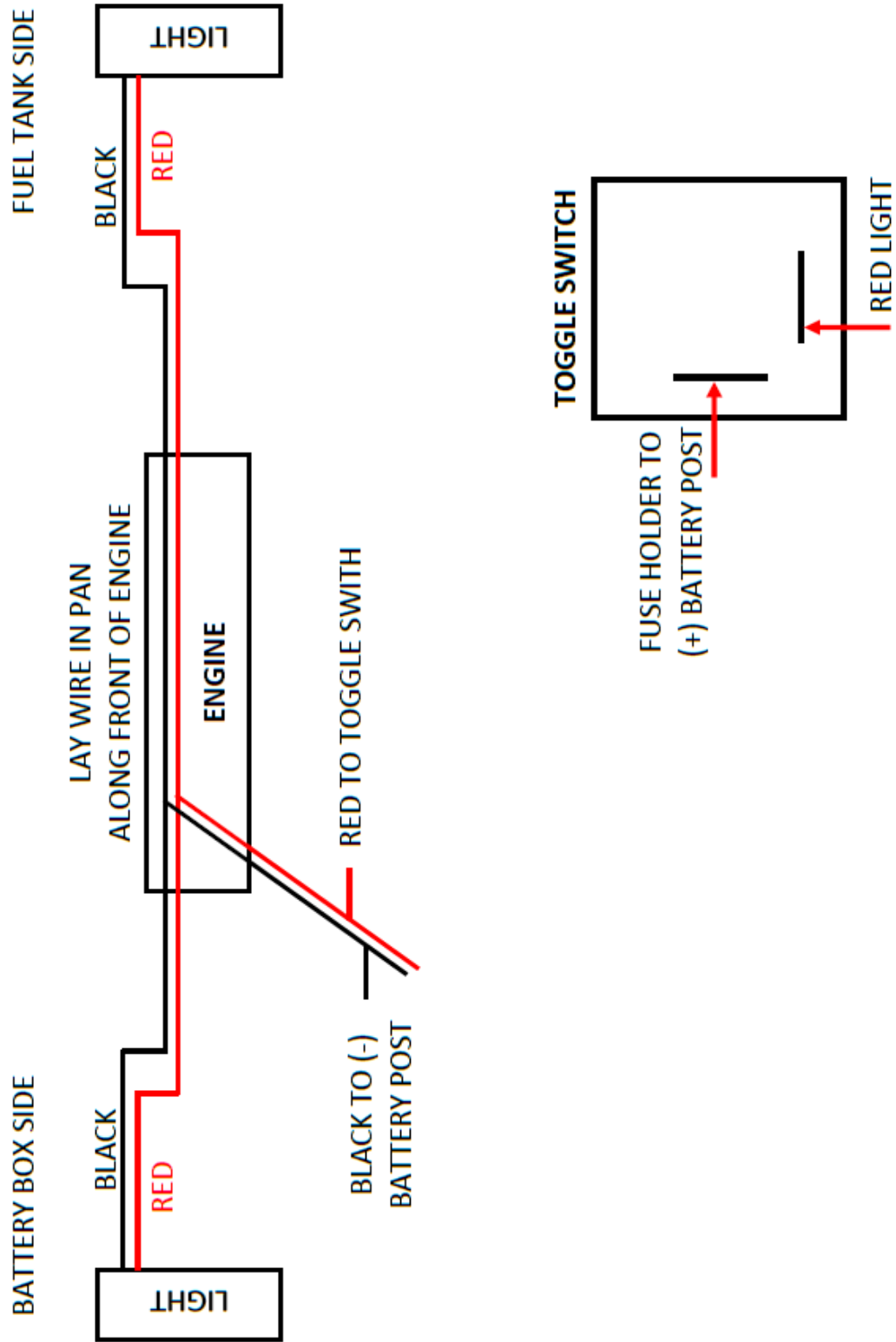
ITEM	DESCRIPTION	PART NO.	QTY	ITEM	DESCRIPTION	PART NO.	QTY
1	MOUNT, BATTERY BOX & OIL FILTER	0276985	1	8	TOGGLE SWITCH BOOT	0315145	1
2	BOX, BATTERY	0280053	1	9	FUSE HOLDER, IN-LINE AUTOMOTIVE TYPE	0315167	1
3	BATTERY	0336008	1	10	FUSE, IN-LINE AUTOMOTIVE TYPE	0315168	1
4	BOX, COVER BATTERY	0480012	1	11	OIL FILTER HOUSING ONLY	0318039	1
5	SWITCH, TOGGLE LIGHT	0315143	1	12	OIL FILTER	0318023	1
6	RELAY, STANDARD 12V	0315408	1	13	BRACKET, SQUARE LED LIGHT MOUNTING	0448153	2
7	PLATE, ON/OFF TOGGLE SWITCH	0315155	1	14	FLOOD LIGHT, LED RECTANGULAR	0315413	2

\*\*\* (1) IS ON OPPOSITE SIDE OF MACHINE



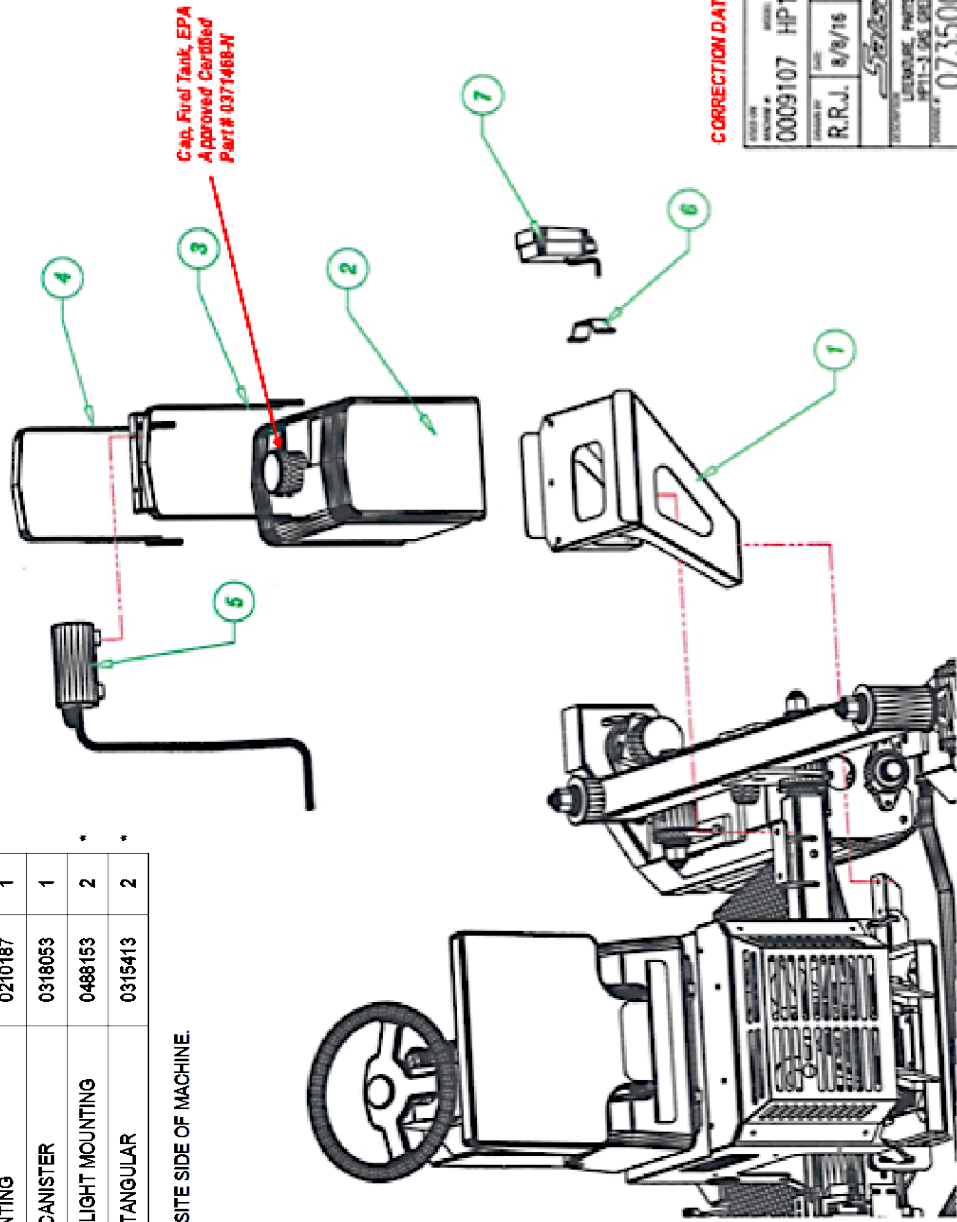
**LIGHT KIT 0161361-N PARTS DIAGRAM. (NOTE: WIRING DIAGRAM ON NEXT PAGE)**

# HP11-III



ITEM	DESCRIPTION	PART NO.	QTY
1	MOUNT, FUEL TANK	0281008	1
2	TANK, FUEL- 6 GALLON	0352115	1
3	CLAMP, GAS TANK MOUNTING w/FUEL FILTER CANISTER MOUNT	0210201	1
4	CLAMP, GAS TANK MOUNTING	0210187	1
5	FUEL FILTER - CARBON CANISTER	0318053	1
6	BRACKET, SQUARE LED LIGHT MOUNTING	0488153	2
7	FLOOD LIGHT - LED RECTANGULAR	0315413	2

\* (1) OF ITEM #s 6 & 7 IS ON OPPOSITE SIDE OF MACHINE.

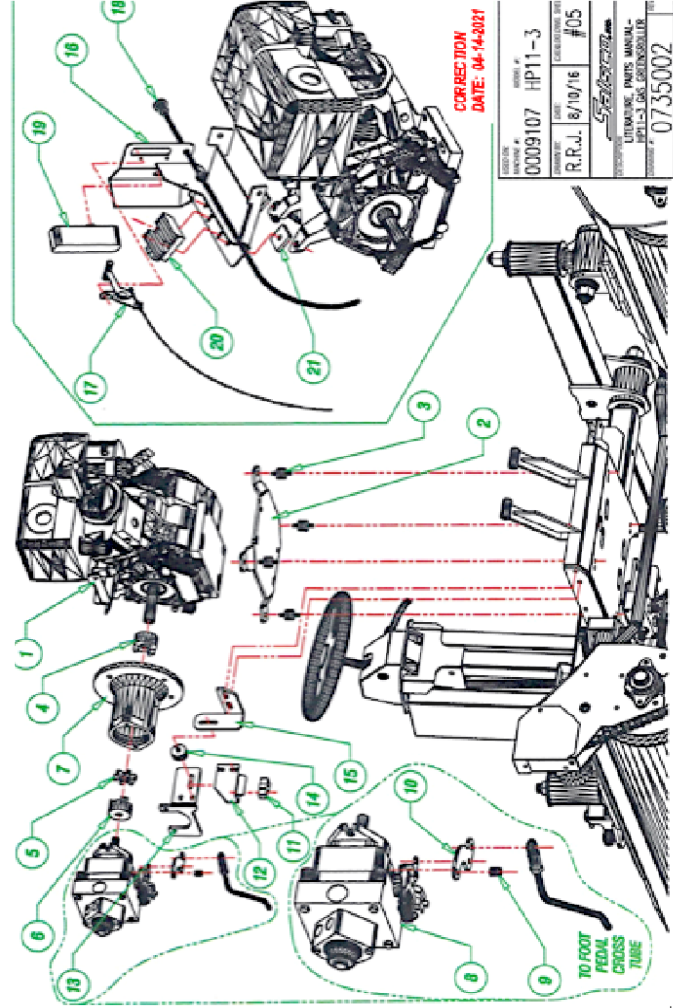


CORRECTION DATE: 04-14-2021

MODEL #	0009107	HP11-3
DATE	R.R.J. 8/9/16	#03
TECHNICIAN	S. J. ...	
LICENSE #	... 0735002	



ITEM	DESCRIPTION	PART NO.	QTY	ITEM	DESCRIPTION	PART NO.	QTY
1	ENGINE, HONDA 13HP	0337033	1	12	BRACKET, NEUTRAL SWITCH MOUNTING	0488046	1
2	PLATE, ENGINE VIBRATION DAMPING	0462462	1	13	SUPPORT, HYDRAULIC PUMP	0477231	1
3	MOUNT, VIBRATION DAMPING SANDWICH 1/4-20	0376319	4	14	MOUNT, VIBRATION DAMPING SANDWICH, 5/16-18	0376250	1
4	COUPLING, HUB-1" BORE	0313003	1	15	BRACKET, VIBRATION DAMPING MOUNTING	0406877	1
5	COUPLING, SPIDER SOX, RUBBER	0313004	1	16	BRACKET, IGNITION, CHOKE & THROTTLE MOUNTING	0288246	1
6	COUPLING, HUB 17MM BORE	0313081	1		<b>*NO LONGER USED. STILL AVAILABLE ON OLDER MACHINES</b>		
7	HOUSING, ALUMINUM WITH PLASTIC CAP	0328059	1	17	THROTTLE CONTROL CABLE	0337563	1
8	HYDRAULIC PUMP	0330250	1	18	CABLE, HAND CHOKE	0308043	1
9	D.O.M. TUBE-1/2" O.D. X .083" WALLX 5/8" LONG	STOCK	1	19	IGNITION CONTROL BOX (SUPPLIED WITH ENGINE)	NO #	1
10	LEVER, HYDRAULIC PUMP, REAR DRIVE	0433251	1	20	REGULATOR (SUPPLIED WITH ENGINE)	NO #	1
11	SWITCH, SNAP ACTION	0315375	1	21	PAD, IGNITION, CHOKE & THROTTLE BRACKET, VIBRATION	0488074	2



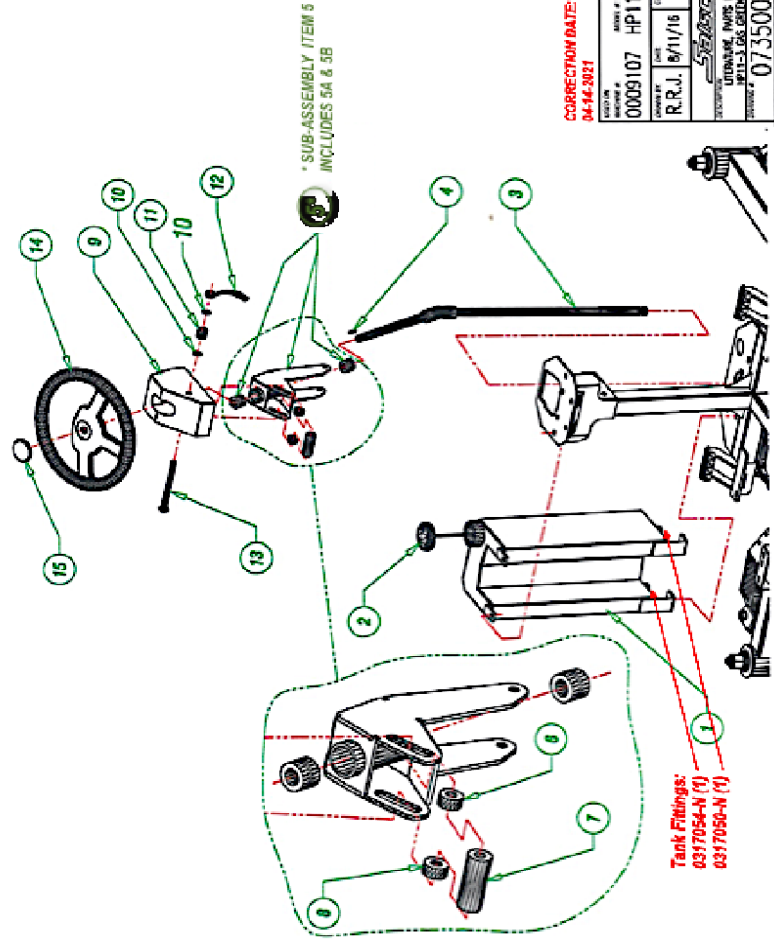
\* HARDWARE TO HOLD ITEM # 11,  
SNAP ACTION SWITCH IN PLACE.  
SCREW, 0346882 - QTY. 2  
WASHER, 0353010 - QTY. 2  
NUT, 0333010 - QTY. 2  
WASHER, 0353009 - QTY. 4

**CORRECTION**  
**DATE: 04-14-2021**

WORK ORDER # 0009107 HP11-3  
DATE: 8/10/16  
R.P.J. #05  
0735002

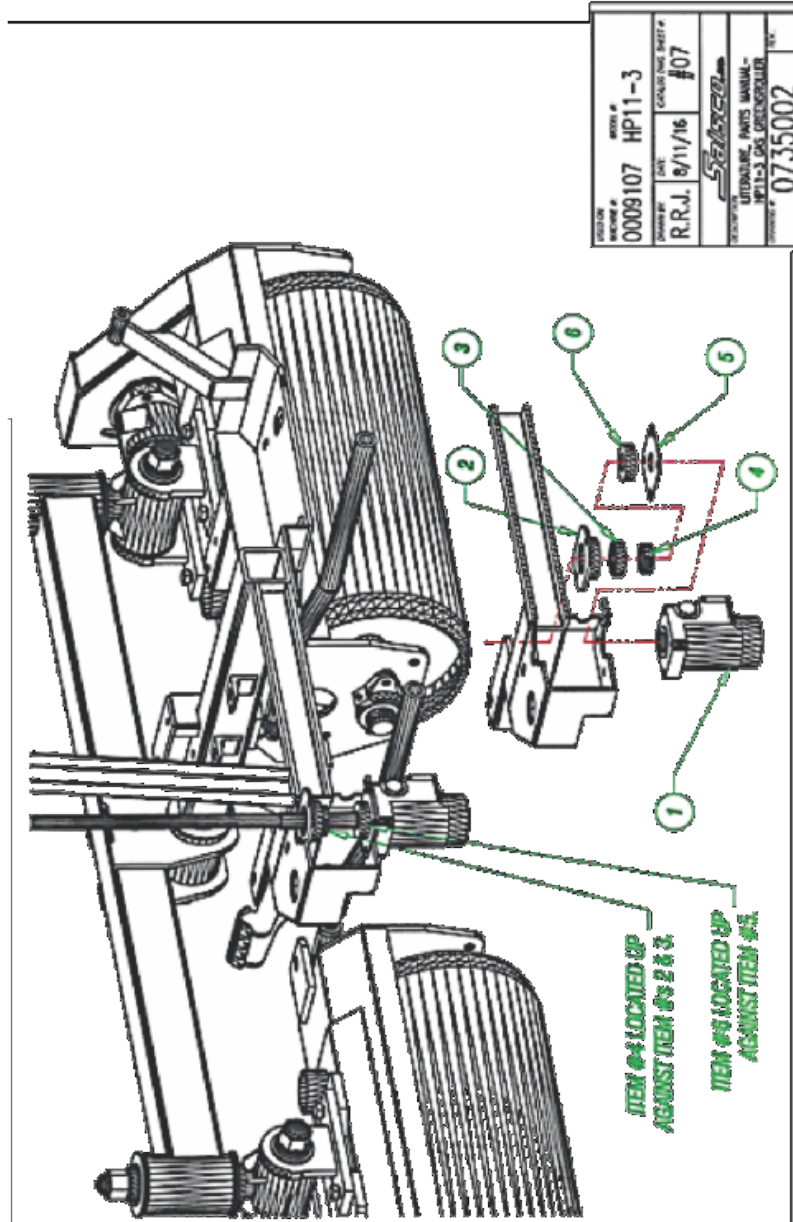
ITEM	DESCRIPTION	PART NO.	QTY
1	TANK, HYDRAULIC OIL	0252108	1
2	CAP, TANK	0271496	1
3	SHAFT, TILT WHEEL STEERING	0248407	1
4	KEY, STEERING SHAFT	0431003	1
5	ARM, TILT WHEEL STEERING PIVOT (SUB-ASSEMBLY)	0265121	1
5A	ARM, TILT WHEEL STEERING PIVOT	0265122	1
5B	BUSHING, SLEEVE-OILITE	0307001	2
6	D.O.M. TUBE 1" O.D. X 1/4" WALL X 1/2' LG.	STOCK	1
7	D.O.M. TUBE 1" O.D. X 1/4" WALL X 2-1/2' LG.	STOCK	1

ITEM	DESCRIPTION	PART NO.	QTY
8	TUBE, HANDLE LEVER LOCKING	0467576	1
9	BOX, TILT WHEEL STEERING	0280064	1
10	WASHER, FLAT U.H.M.W. POLYETHELENE	0353333	1
11	D.O.M. TUBE-1" O.D. X 1/4" WALL X 1-1/8" LG.	STOCK	1
12	HANDLE, EASY GRIP	0323142	1
13	BOLT, CARRIAGE	0346489	1
14	WHEEL STEERING	0354142	1
15	WHEEL CENTER CAP-BLACK	0354143	1



ITEM	DESCRIPTION	PART NO.	QTY
1	STEERING UNIT (WITHOUT POWER BEYOND)	0330261	1
2	HOUSING, STEERING SHAFT BEARING	0226349	1
3	BEARING, STEEL BALL 7/8" BORE	0303109	1
4	COLLAR, SPLIT ONE PIECE 7/8"	0311049	1
5	PLATE, DERRIS SEAL	0490481	1
6	RING, STEERING SHAFT DUST SEAL	0443073	1

SEAL KIT FOR STEERING UNIT, ITEM# 1 - 0330275 - QTY 1



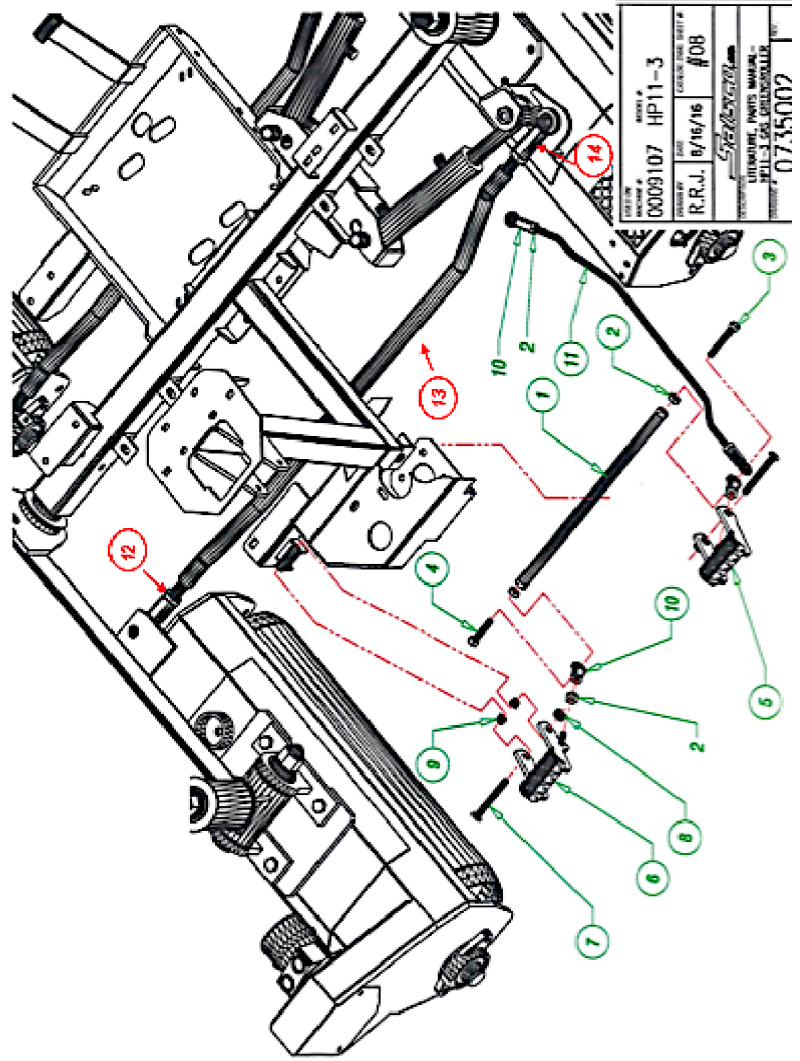
MODEL	0009107	REV	HP11-3
DATE	8/11/16	CREATED BY	R.R.J.
SAATCHI		UTIMATING PARTS MANUAL	
PARTS DEPARTMENT		#0735002	

ISSUED: 8-11-2016  
CORRECTION: 04-14-2021  
CORRECTION: 08-17-2023

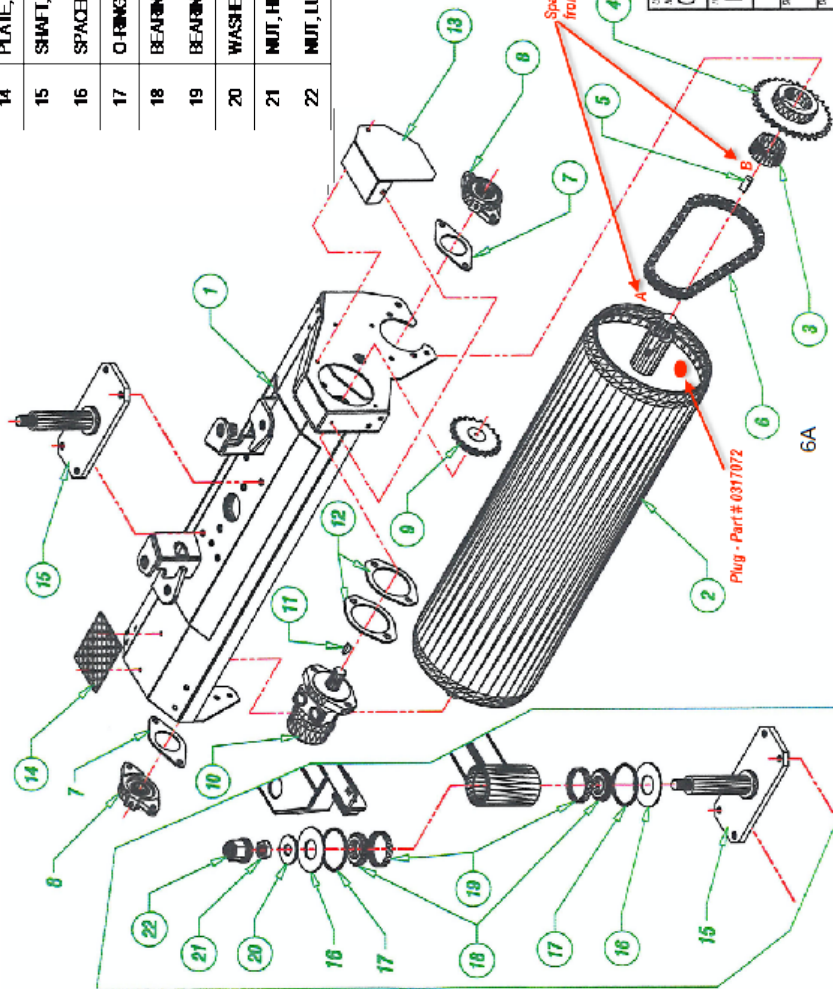
ITEM	DESCRIPTION	PART NO.	QTY
8	COLLAR, SET 3/8"	0311031	2
9	BUSHING, FLANGED OILITE	0303020	4
10	BALL JOINT ROD END-THREADED FEMALE SHANK	0303019	4
11	ROD, FORWARD/REVERSE	0445206	1
12	NUT, HEX JAM	0303098	1
13	ROD, STEERING	0245224	1
14	BALL JOINT END	0303110	1

ITEM	DESCRIPTION	PART NO.	QTY
1	TUBE, FORWARD/REVERSE PEDALS	0287412	1
2	NUT, HEX JAM 3/8-24	0306059	6
3	SCREW, HEX HEAD CAP 3/8-24 X 2-1/2" LG.	0346280	1
4	SCREW, HEX HEAD CAP 3/8-24 X 1-3/4" LG.	0346296	1
5	PEDAL, FOOT-LEFT	0288028	1
6	PEDAL, FOOT-RIGHT	0288028	1
7	PIN, FOOT PEDAL PIVOT	0240143	2

CORRECTION DATE: 04-14-2021



ITEM	DESCRIPTION	PART NO.	QTY
1	HOUSING, ROLLER LEFT	0228350	1
2	SHAFT, ROLLER	0248320	1
3	TAPER LOCK SPROCKET BUSHING	0351213	3
4	SPROCKET, #58B132 TAPER LOCK	0351212	3
5	KEY, SQUARE (SUPPLIED WITH TAPER LOCK (BUSHING))	NO #	3
6	CHAIN #50 X 55 PITCHES	0309027	3
6A	MASTER LINK	0309008	3



ITEM	DESCRIPTION	PART NO.	QTY
7	SPACER, 2-BOLT BEARING FLANGE 1-1/4\"/>		
8	BEARING, 2-BOLT FLANGE STYLE 1-1/4\"/>		
9	SPROCKET, ROLLER SHAFT DRIVE MOTOR	0251194	3
10	HYDRAULIC DRIVE MOTOR (LEFT SIDE ONLY)	0330139	1
11	KEY, WOODRUFF	0331506	3
12	SPACER, HYDRAULIC MOTOR	0449050	6
13	GUARD, ROLLER SHAFT DRIVE CHAIN LEFT	0421620	1
14	PLATE, FOOT STEP	0490534	1
15	SHAFT, ROLL HOUSING PIVOT	0248392	1
16	SPACER, 11GA. X 1-9/16\"/>		
17	O-RING, 3\"/>		
18	BEARING, BEARING CONE (TAPERED) 1-1/2\"/>		
19	BEARING, BEARING CUP (TAPERED) 1-1/2\"/>		
20	WASHER, FLAT 7/8\"/>		
21	NUT, HEX JAW 7/8-14	0338060	6
22	NUT, LUG CAP	0338405	6

\*\*\*NOTE ITEM# 2  
Cannot purchase shaft or roll separately. Must  
be purchased complete.

\*\*\* ITEM# 1 - 0228350 SN 7561 & Under.  
0228376 SN 7562 & Up

Spacing of bushing is .532\"/>

CORRECTION DATE:  
10-17-2023

CORRECTION DATE: 04-14-2021

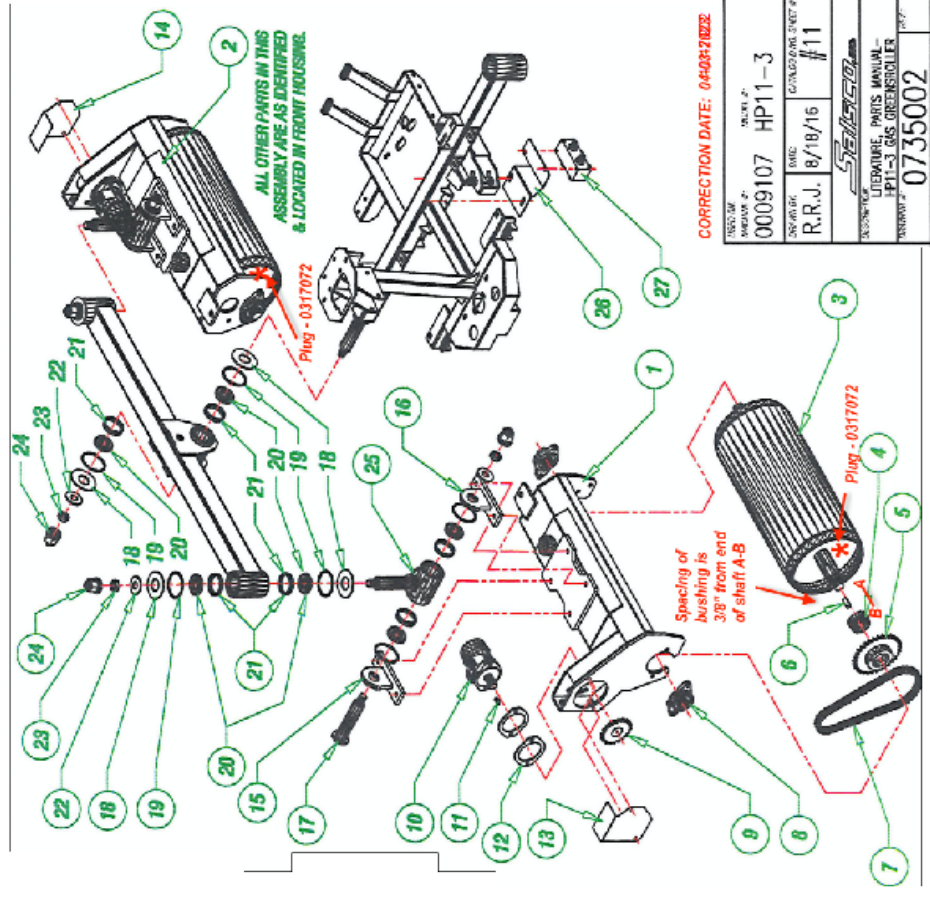
STOCK NO.	0009107	MODEL #	HP11-3
WORKING NO.	R.R.J.	DATE	8/17/16
ISSUED BY	R.R.J.		
STANDARD SHEET #	#10		
<b>SEARS</b>			
LITERATURE, PARTS MANUAL - HP11-3 GAS GENERATOR			
TRANSFORMER #	0735002		

\* PARTIAL QUANTITY OF  
THESE ITEMS ARE USED ON

\* PARTIAL QUANTITY OF  
THESE ITEMS ARE USED ON  
OPPOSITE SIDE OF MACHINE.

ITEM	DESCRIPTION	PART NO.	QTY
1	HOUSING, ROLLER/RIGHT FRONT	0228351	1 ***
2	HOUSING, ROLLER/RIGHT REAR	0228352	1 ***
3	SHAFT, ROLLER/SHORT	0248113	2 ***
4	TAPER LOCK SUPPORT/BUSHING	0351213	3 *
5	SPOCKET, #60B1B32 TAPER LOCK	0351212	3 *
6	KEY, SQUARE (SUPPLIED WITH TAPER LOCK BUSHING)	NO #	3 *
7	CHAIN, #60 X 55 PITCHES (INCLUDES MASTER LINK) <b>Master Link Order Separately - 0303008</b>	0309027	3 *
8	BEARING, 2-BOLT FLANGE STYLE-01 1/4" BORE	0303083	6 *
9	SPOCKET, ROLLER SHAFT DRIVE MOTOR	0251194	3 *
10	HYDRAULIC DRIVE MOTOR (RIGHT SIDE ONLY)	0300271	2 *
11	KEY, WOODRUFF	0301506	3 *
12	SPACER, HYDRAULIC MOTOR	0449050	6 *
13	GUARD, ROLLER SHAFT DRIVE CHAIN-FRONT	0421631	1 *
14	GUARD, ROLLER SHAFT DRIVE CHAIN-REAR	0421630	1 *
15	MOUNT, OSCILLATOR PIVOT FRONT	0276821	2 *
16	MOUNT, OSCILLATOR PIVOT REAR	0276822	2 *
17	SHAFT, OSCILLATOR PIVOT HOUSING	0248359	2 *
18	SPACER - 1 1/8" X 1 3/16" I.D. X 3-1/2" O.D.	0453117	8 *
19	O-RING - 3" I.D. X 3-3/8" O.D. X 3/16"	0343003	12 *
20	BEARING, BEARING-CONE (TAPERED) 1-1/2" BORE	0303089	12 *
21	BEARING, BEARING-CUP (TAPERED) 1-1/2" BORE	0303090	12 *
22	WASHER - FLAT - 7/8" U.S.S.	0353145	6 *
23	NUT, HEX JAM - 7/8-14	0308060	6 *
24	NUT, LUG C/P	0308105	6 *
25	HOUSING, ROLL OSCILLATOR W/O SPRING BRACKET	0228353	2 *
26	BRACKET, HOSE BLOCK MOUNTING	0488249	1 *
27	HYDRAULIC TEE MANIFOLD/BLOCK	0300272	1 *

\* PARTIAL QUANTITY OF THESE ITEMS ARE USED ON OPPOSITE SIDE OF MACHINE

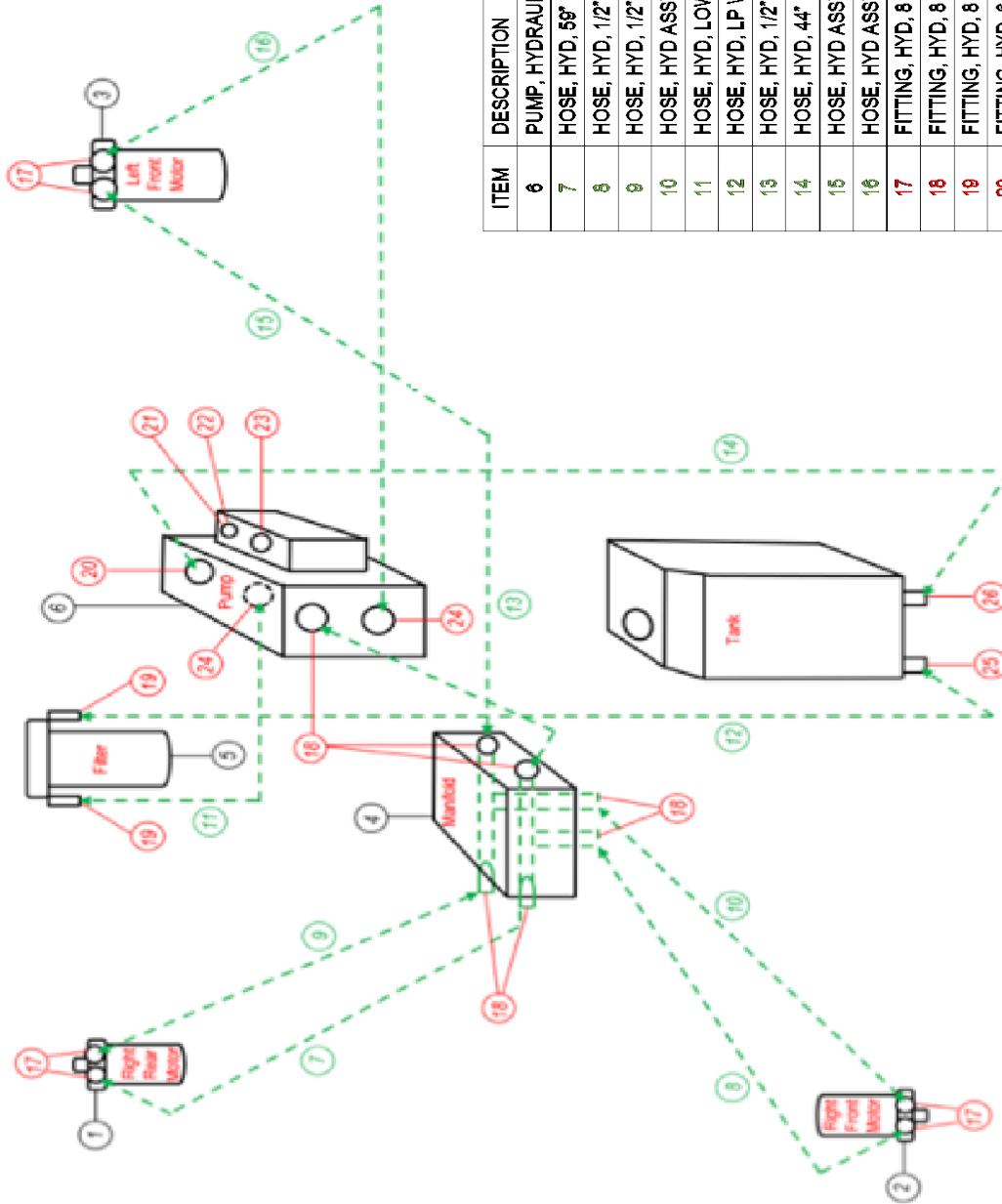


**CORRECTION DATE: 04-08-2022**

REV. NO.	0009107	REV. D.	HP11-3
DATE	R.R.J. 8/18/16	CHANGING SHEET #	#11
<b>STEREOPAC</b>			
LITERATURE, PARTS MANUAL - HP11-3 GAS GREENROLLER			
ISSUE NO.	0735002		

- \*\*\*NOTE: ITEM# 3 Cannot purchase shaft or roll separately. Must be purchased complete.
- \*\*\*ITEM# 1 - 0228351 SN 7561 & Under. 0228379 SN 7562 & Up.
- \*\*\*ITEM# 2 - 0228352 SN 7561 & Under. 0228380 SN 7562 & Up.

**HYDRAULIC COMPONENTS, HOSES & FITTINGS: DRIVE**

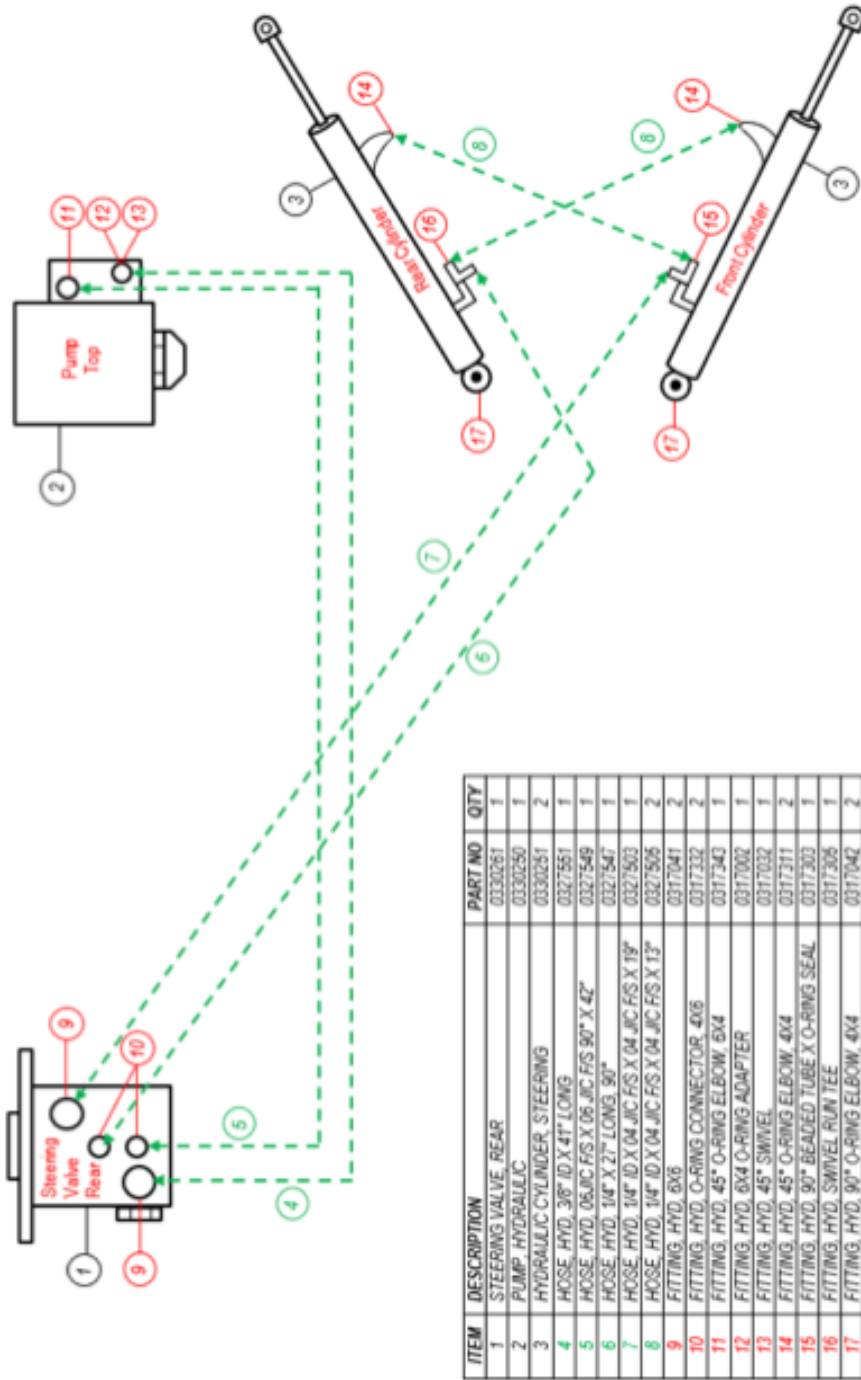


ITEM	DESCRIPTION	PART NO.	QTY
6	PUMP, HYDRAULIC	0330250	1
7	HOSE, HYD, 58"	0327189	1
8	HOSE, HYD, 1/2" X 59"	0327537	1
9	HOSE, HYD, 1/2" X 58"	0327257	1
10	HOSE, HYD ASSY, 60"	0327084	1
11	HOSE, HYD, LOW PRESSURE	0327516	1
12	HOSE, HYD, LP W/PUSH ON ENDS	0327550	1
13	HOSE, HYD, 1/2" X 16"	0327248	1
14	HOSE, HYD, 44"	0327341	1
15	HOSE, HYD ASSY, 32"	0327061	1
16	HOSE, HYD ASSY, 23"	0327039	1
17	FITTING, HYD, 8 X 10	0317008	6
18	FITTING, HYD, 8 X 8	0317030	7
19	FITTING, HYD, 8 X 12	0317184	2
20	FITTING, HYD, 6 X 6, 90°	0317029	1
21	FITTING, HYD, 6 X 4, STRAIGHT	0317002	1
22	FITTING, HYD, 6 X 6, 45° SWIVEL	0317032	1
23	FITTING, HYD, 6 X 6, 45°	0317343	1
24	FITTING, HYD, 8 X 6, 9°	0317007	2
25	FITTING, HYD, 8 X 8, NPT	0317054	1
26	FITTING, HYD, 6 X 6, NPT	0317050	1

ITEM	DESCRIPTION	PART NO.	QTY
1	MOTOR, HYD, DRIVE, RIGHT FRONT	0330271	1
2	MOTOR, HYD, DRIVE, LEFT FRONT	0330271	1
3	MOTOR, HYD, DRIVE RIGHT MOTOR	0330139	1
4	MANIFOLD, TEE	0330272	1
5	FILTER, HYDRAULIC	0318023	1

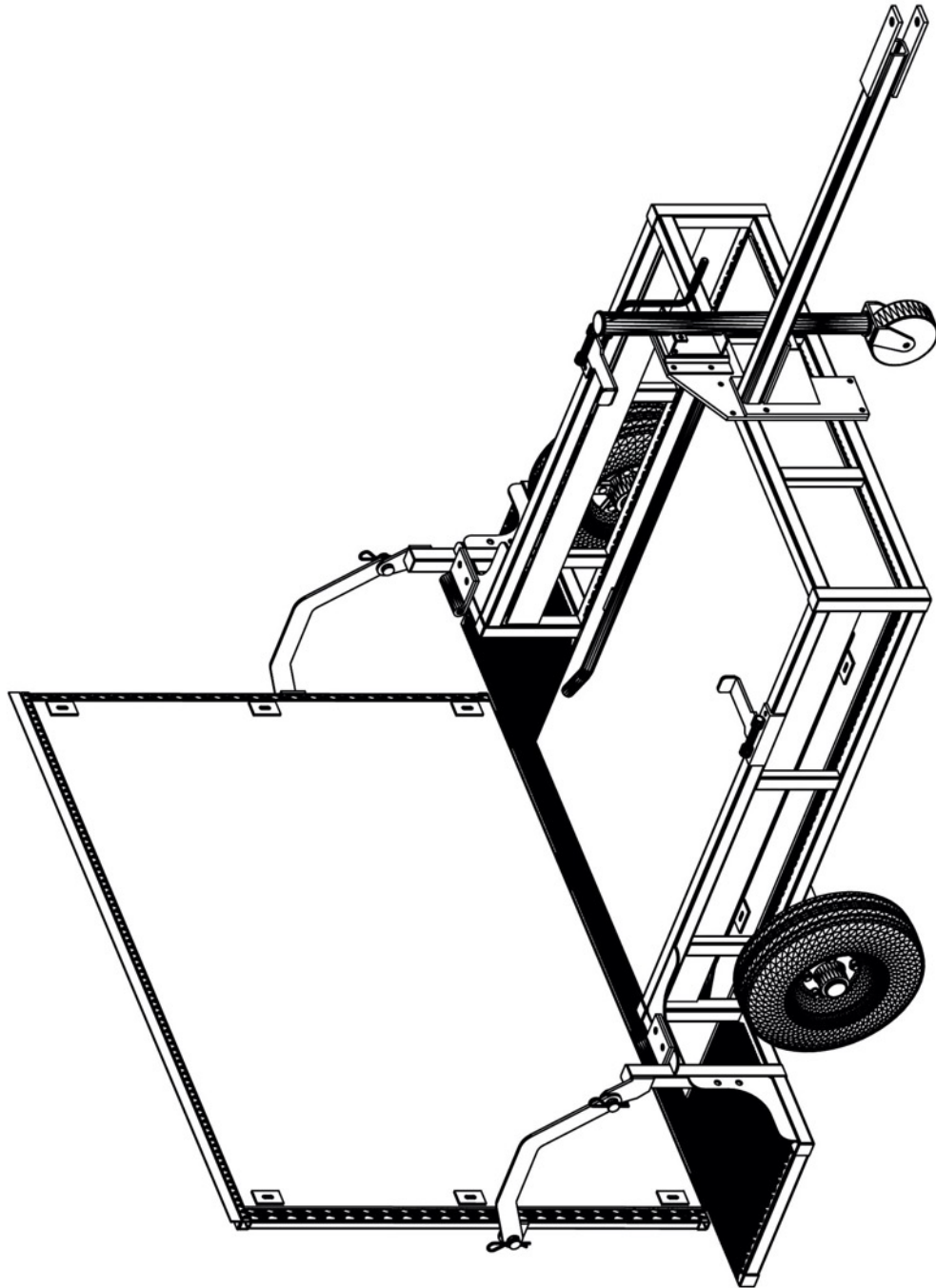
REV. 02-27-2023

**HYDRAULIC COMPONENTS, HOSES & FITTINGS: STEERING**



ITEM	DESCRIPTION	PART NO	QTY
1	STEERING VALVE REAR	0330261	1
2	PUMP HYDRAULIC	0330250	1
3	HYDRAULIC CYLINDER, STEERING	0330251	2
4	HOSE, HYD. 3/8" ID X 41' LONG	0327551	1
5	HOSE, HYD. 06/JIC F/S X 06 JIC F/S 90° X 42"	0327549	1
6	HOSE, HYD. 1/4" X 27' LONG, 90°	0327547	1
7	HOSE, HYD. 1/4" ID X 04 JIC F/S X 04 JIC F/S X 19"	0327503	1
8	HOSE, HYD. 1/4" ID X 04 JIC F/S X 04 JIC F/S X 13"	0327505	2
9	FITTING, HYD. 6X6	0317041	2
10	FITTING, HYD. O-RING CONNECTOR, 4X6	0317332	2
11	FITTING, HYD. 45° O-RING ELBOW, 6X4	0317343	1
12	FITTING, HYD. 6X4 O-RING ADAPTER	0317002	1
13	FITTING, HYD. 45° SWIVEL	0317032	1
14	FITTING, HYD. 45° O-RING ELBOW, 4X4	0317311	2
15	FITTING, HYD. 90° BEADED TUBE X O-RING SEAL	0317303	1
16	FITTING, HYD. SWIVEL RUN TEE	0317306	1
17	FITTING, HYD. 90° O-RING ELBOW, 4X4	0317042	2

REV	REVISIONS DESCRIPTION	DATE

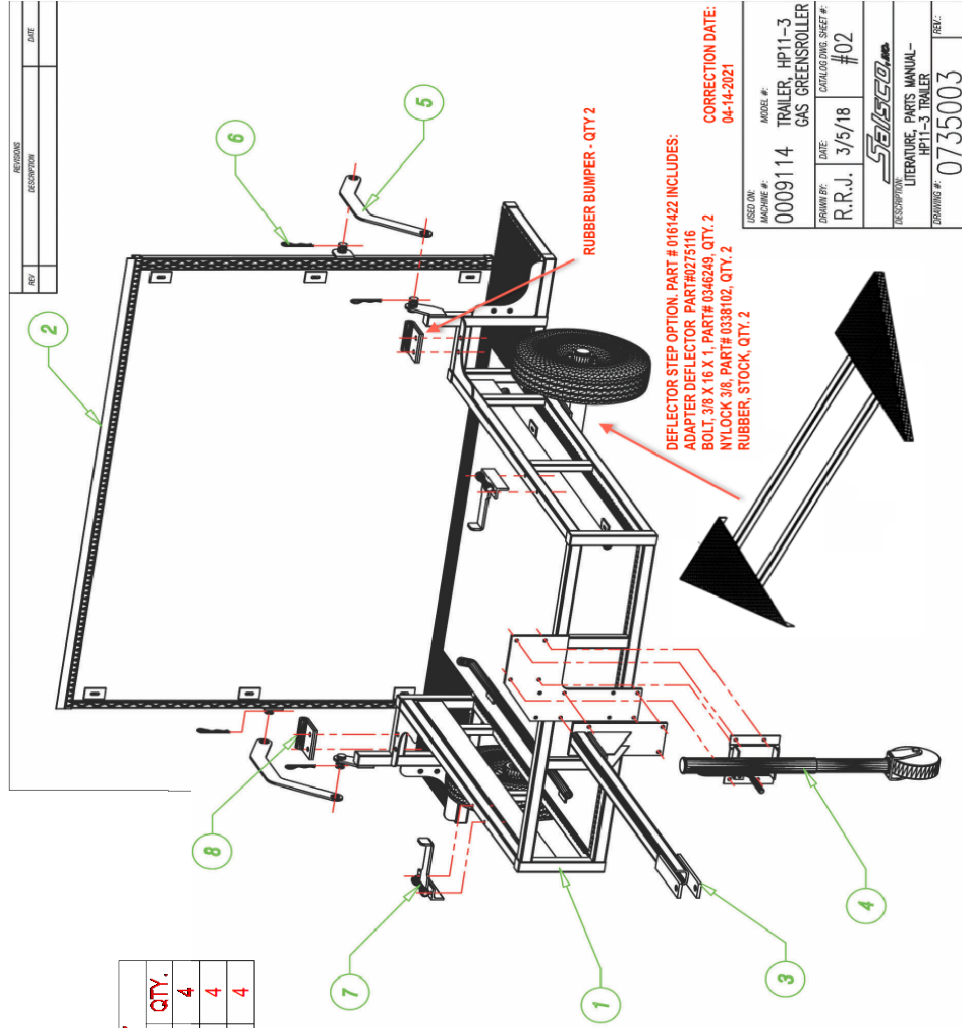


USED ON: MACHINE #:	MODEL #:	TRAILER, HP11-3 GAS GREENS ROLLER	
0009114		CATALOG DWG SHEET #:	#01
DRAWN BY: R.R.J.	DATE: 3/5/18	STEINER	
		DESCRIPTION:	LITERATURE, PARTS MANUAL- HP11-3 TRAILER
		DRAWING #:	0735003
		REV.:	

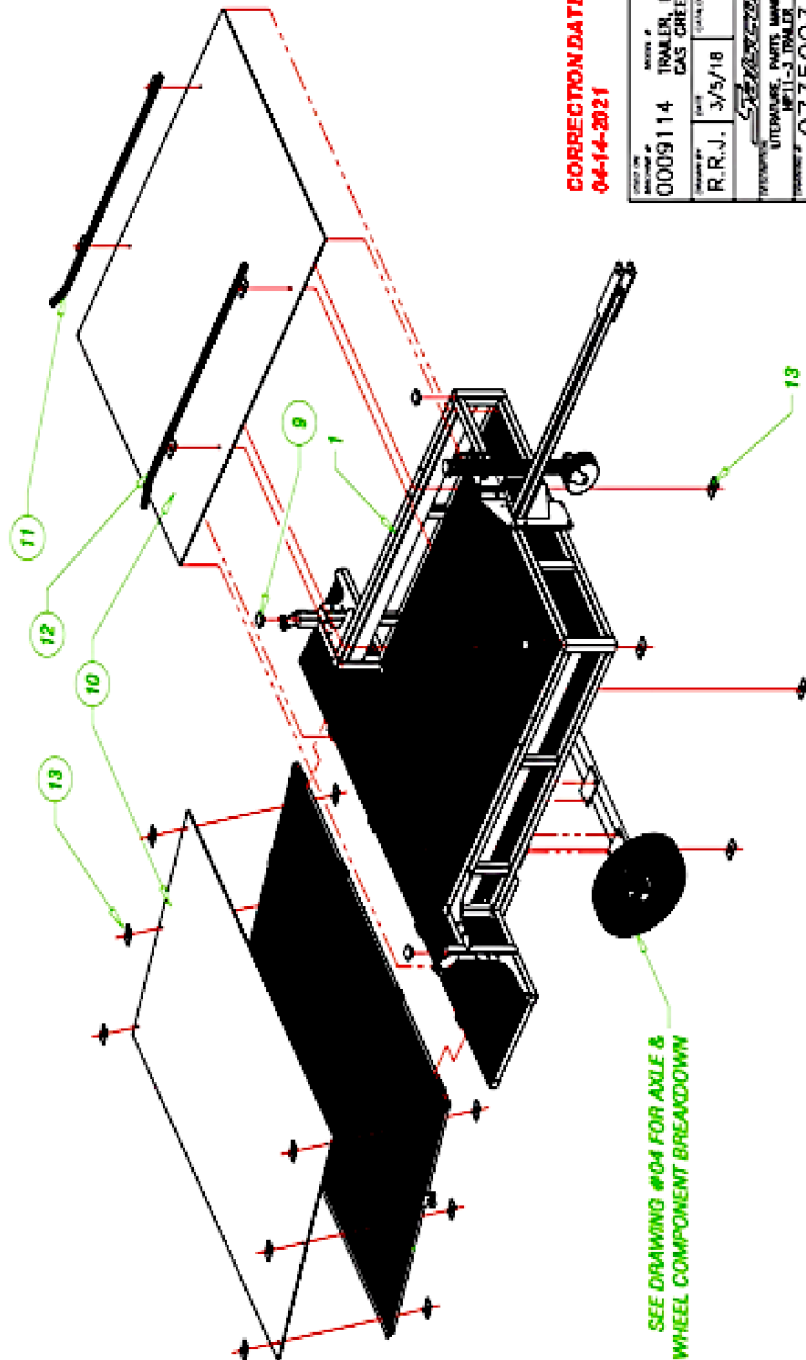
ITEM	DESCRIPTION	PART NO.	QTY
5	LEVER, TRAILER TAILGATE	0433311	2
6	PIN, COTTER - "R"-STYLE (HAIRPIN)	0340230	4
7	LATCH, HP11-III TRAILER LOCKING	0233345	2
8	GUARD, TRAILER SIDE	0421716	2

ITEM	DESCRIPTION	PART NO.	QTY
1	FRAME, HP11-III TRAILER	0219545	1
2	FRAME, HP11-III TRAILER TAILGATE	0219546	1
3	TONGUE, GOLF COURSE TRAILER	0225011	1
4	JACK WITH CASTER	0369047	1

HARDWARE FOR LATCH, ITEM #7		
DESCRIPTION	PART #	QTY.
5/16 WASHER	0353114	4
NYLOCK NUT	0338103	4
BOLT, 5/16 X 2-1/4	0346175	4



ITEM	DESCRIPTION	PART NO.	QTY
9	CAP, PLASTIC - SQUARE TUBE	0371001	4
10	MAT, RUBBER - 1/4" X 43" X 61" LONG (ONE PIECE TAILGATE & BOX MAT)	0356040	2
10	<b>MAT, RUBBER (SPLIT TAILGATE)</b>	<b>0356034</b>	<b>2</b>
11	GUIDE, TRAILER ROLL - LEFT	0222207	1
12	GUIDE, TRAILER ROLL - RIGHT	0222208	1
13	PLATE, GUIDE MOUNTING	0462585	16



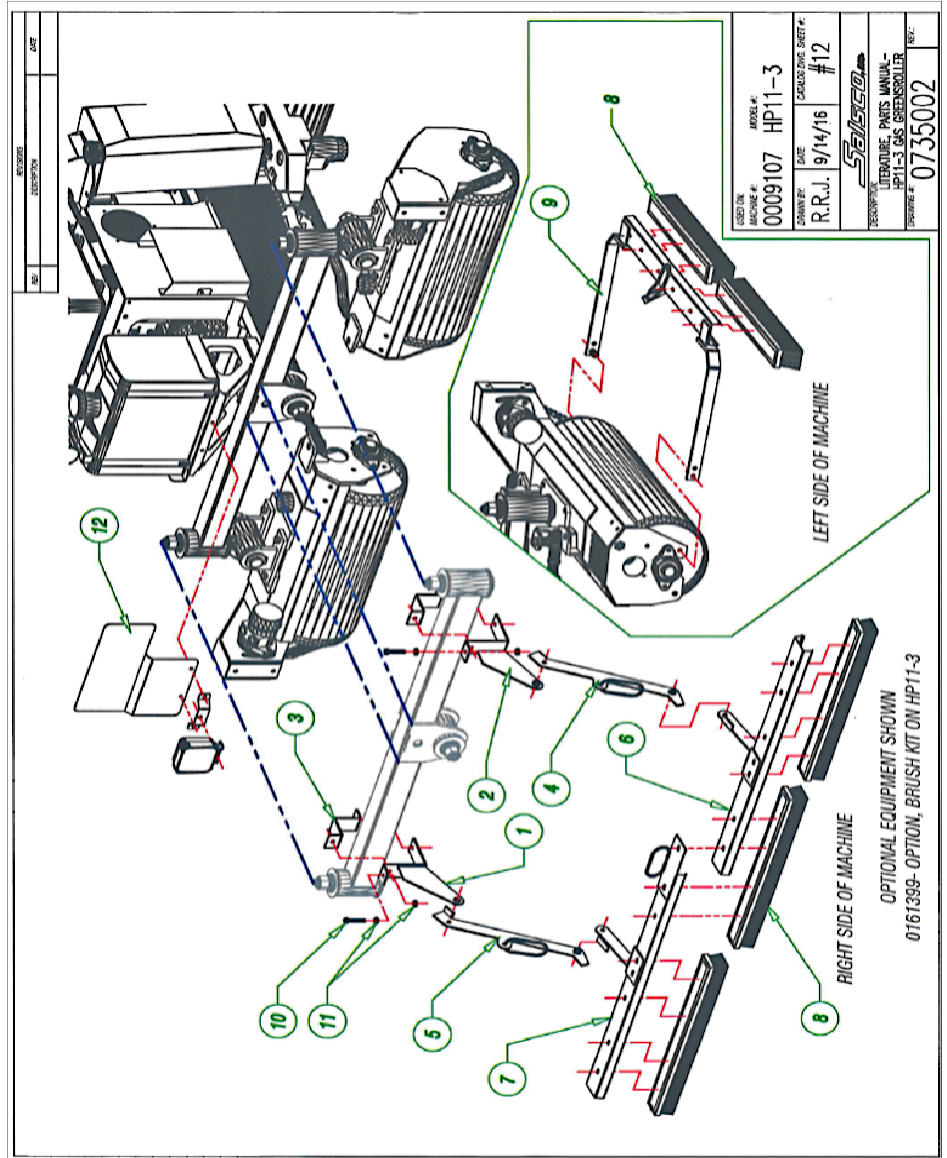
**CORRECTION DATE:**  
**04-14-2021**

REVISED BY	REVISED DATE	REVISED BY	REVISED DATE
0009114	3/5/18	R.R.J.	3/5/18
PROJECT #		PROJECT #	
0735003		0735003	
DESCRIPTION			
TRAILER, HP11-3			
GAS GREENROLLER			
LITERATURE, PARTS MANUAL -			
HP11-3 TRAILER			



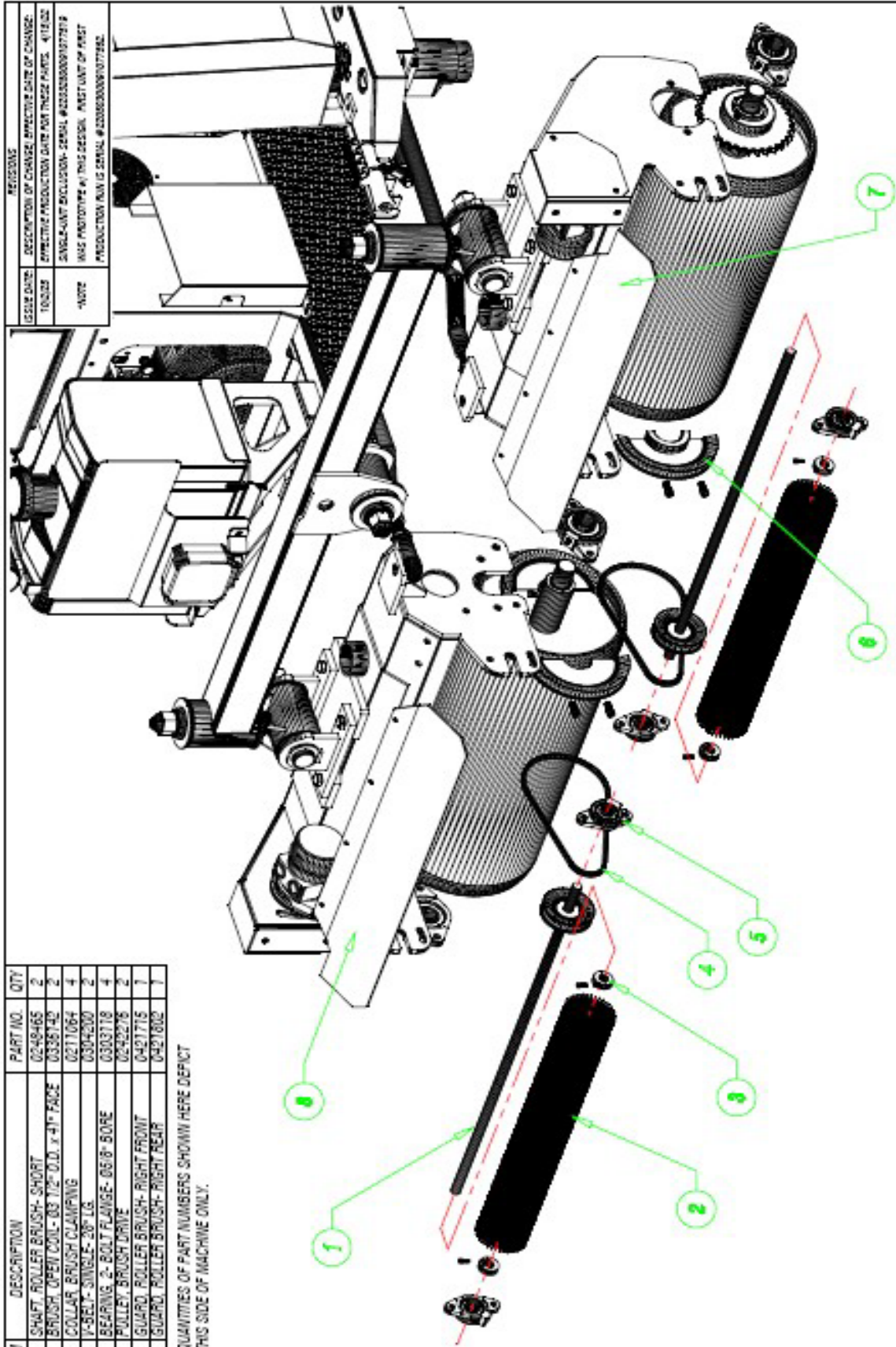
ITEM	DESCRIPTION	PART NO.	QTY
7	HOUSING, DUAL BRUSH MTG.-REAR	0228357	1
8	BRUSH, REPLACEMENT	0338060	5
9	HOUSING, BRUSH KIT	0228294	1
10	SCREW, HEX HEAD CAP-3/8-16 X 2" LONG	0346207	2
11	NUT HEX JAM - 3/8-16	0338052	4
12	GUARD, FUEL TANK	0421704	1

ITEM	DESCRIPTION	PART NO.	QTY
1	BRACKET, DUAL BRUSH HOUSING MTG.-REAR	0288251	1
2	BRACKET, DUAL BRUSH HOUSING MTG.-FRONT	0288252	1
3	CLAMP, DUAL BRUSH HOUSING MTG.-BRACKET	0410202	2
4	LEVER, DUAL BRUSH-FRONT	0233315	1
5	LEVER, DUAL BRUSH-REAR	0233316	1
6	HOUSING, DUAL BRUSH MTG. FRONT	0228356	1



ITEM	DESCRIPTION	PART NO.	QTY.
1	SHAFT, ROLLER BRUSH- SHORT	0248465	2
2	BRUSH, OPEN COIL- 03 1/2" O.D. x 41" FACE	0335742	2
3	COLLAR, BRUSH CLAMPING	0211064	4
4	V-BELT- SINGLE- 28" LG.	0304200	2
5	BEARING, 2- BOLT FLANGE- 05/8" BORE	0303718	4
6	PULLEY, BRUSH DRIVE	0249276	2
7	GUARD, ROLLER BRUSH- RIGHT FRONT	0421715	7
8	GUARD, ROLLER BRUSH- RIGHT REAR	0421802	7

\*QUANTITIES OF PART NUMBERS SHOWN HERE DEPICT THIS SIDE OF MACHINE ONLY.



ISSUE DATE	DESCRIPTION OF CHANGE	EFFECTIVE DATE OF CHANGE
10/20/22	EFFECTIVE PRODUCTION DATE FOR THESE PARTS - 4/18/22	4/18/22
SINGLE-UNIT EXCLUSION- SERIAL #2202000001077979		
BASE PROTOTYPE AT THIS SERIAL. FIRST UNIT OF FIRST PRODUCTION RUN IS SERIAL #2202000001077982.		

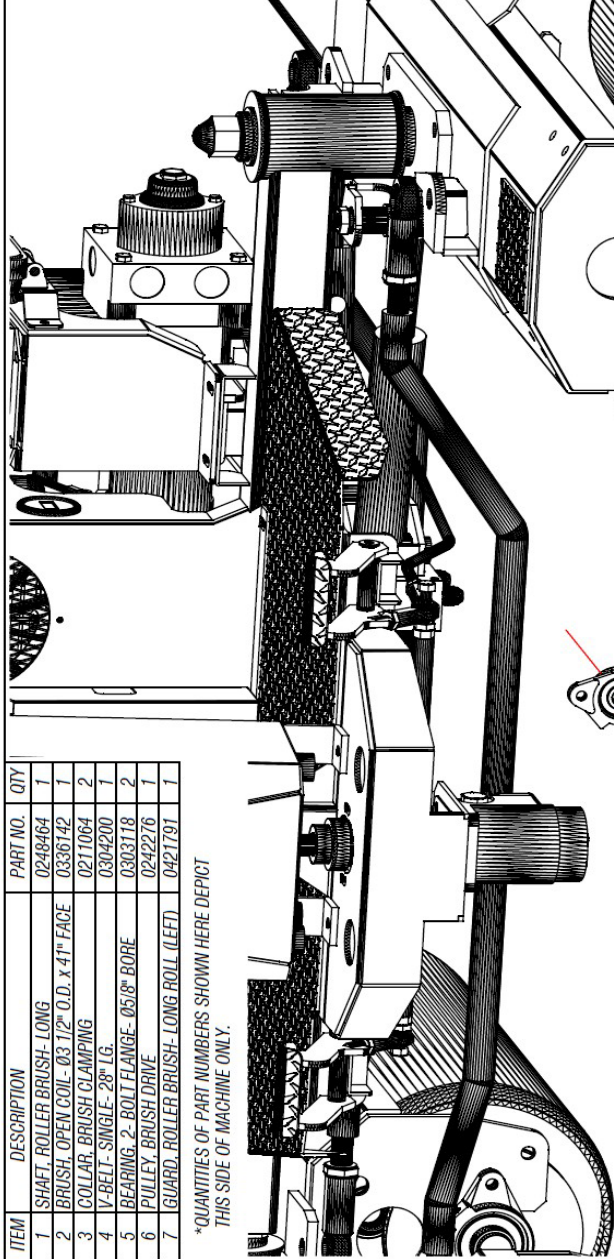
REVISIONS

OPTIONAL EQUIPMENT SHOWN  
0161433- KIT, GROSS CONTAMINATION PREVENTION FOR HP11-3

0009107- GAS GREENROLLER w/ 3 ROLLS- MODEL #HP11-3 DWG. #14



REVISIONS	
ISSUE DATE	DESCRIPTION OF CHANGE/EFFECTIVE DATE OF CHANGE
10/2/25	EFFECTIVE PRODUCTION DATE FOR THESE PARTS. 4/15/22
	SINGLE-UNIT EXCLUSION-SERIAL #22032800091077519
*NOTE	WAS PROTOTYPE w/ THIS DESIGN. FIRST UNIT OF FIRST PRODUCTION RUN IS SERIAL #22030300091077562.



ITEM	DESCRIPTION	PART NO.	QTY
1	SHAFT, ROLLER BRUSH- LONG	0248464	1
2	BRUSH, OPEN COIL- .03-1/2" O.D. x 41" FACE	0336142	1
3	COLLAR, BRUSH CLAMPING	0211064	2
4	V-BELT- SINGLE- 28" LG.	0304200	1
5	BEARING- 2- BOLT FLANGE- .0518" BORE	0303118	2
6	PULLEY, BRUSH DRIVE	0242276	1
7	GUARD, ROLLER BRUSH- LONG ROLL (LEFT)	0421791	1

\*QUANTITIES OF PART NUMBERS SHOWN HERE DEPICT THIS SIDE OF MACHINE ONLY.

OPTIONAL EQUIPMENT SHOWN  
0161433- KIT, CROSS CONTAMINATION PREVENTION FOR HP11-3

DWG. # 15

0009107- GAS GREENROLLER w/ 3 ROLLS- MODEL #HP11-3

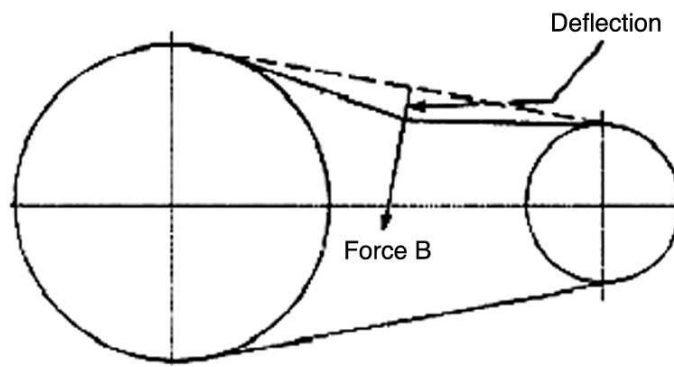


Below is a quick reference chart for various “Flat Head Cap Screws” and the torque recommendations.

**VALUES ARE STATED IN FOOT POUNDS**

BOLT SIZE	Thds Per Inch	SAE Grade 5	SAE Grade 8
1/4	20	10	14
	28	---	---
5/16	18	19	29
	24	---	---
3/8	16	33	47
	24	---	---
7/16	14	54	78
	20	---	---
1/2	13	78	119
	20	---	---
9/16	12	114	169
	18	---	---
5/8	11	154	230
	11	---	---
3/4	10	257	380
	10	---	---
7/8	9	382	600
	9	---	---
1	8	587	700
	8	---	---

Drive Belt Tension Measurement by Deflection



Deflection should be 3/8" when 8-12 lbs. push is applied at "B"



# **CUSTOMER SUPPORT**

## **Contact Customer Support**

SALSCO

105 Schoolhouse Road

Cheshire, CT 06410 USA

800-872-5726, 203-271-1682

203-271-2596 (Fax)

[www.salsco.com](http://www.salsco.com)

## **Registration and Warranty Information**

[www.salsco.com/register](http://www.salsco.com/register)