

**Quality of Workmanship**  
**Innovative Design**  
**Built to Last!**



## GAS ROLLERS, 09065, 09066, 09067 Operators And Parts Manual



---

### MANUFACTURER OF OUTDOOR POWER EQUIPMENT

Products for Turf & Lawncare, Rental, Construction, Tree Care, Wood Processing, Nursery & Farm Industries

3-1/2" - 18" Capacity, Gas, Diesel, & PTO Wood/Brush Chippers - Slab Chippers  
Gas, Electric & Tow Behind Rollers - Tranz-Former Roller - CRV Core Recovery Vehicle  
Mini-Paver - Mini-Track Paver - Cobra Curbers - Scorpion Router - Concrete Paver  
Chipper Shredder Vacuums - Tailgate & Truckloader Vacuums  
9 cu. yds. - 50 cu. yds. Per Hour, Electric, PTO & Diesel Powered Shaving Mills

**Salsco, INC.**  
LEADER BY DESIGN

105 Schoolhouse Road  
Cheshire, CT 06410 U.S.A.  
800-872-5726 (Toll Free), 203-271-1682, 203-271-2596 (Fax)  
[www.salsco.com](http://www.salsco.com), [sales@salsco.com](mailto:sales@salsco.com)

TABLE OF CONTENTS.....	Page 1
STATEMENT OF FACT.....	Page 2
SPECIFICATIONS & FEATURES.....	Page 3
MACHINE REGISTRATION.....	Page 4
SAFETY & OPERATING INSTRUCTIONS.....	Pages 5-6
SERVICE & MAINTENANCE INSTRUCTIONS.....	Page 7
SERVICE INTERVAL SCHEDULE.....	Page 8
PARTS DIAGRAMS.....	Pages 9-23
CROSS CONTAMINATION PREVENTION KIT.....	Page 24
HYDRAULIC MOTORS & SEAL KITS.....	Page 25
TORQUE CHARTS.....	Page 26
WARRANTY POLICY/PROCEDURE.....	Pages 27-28
WARRANTY CLAIM FORM.....	Pages 29-30
DEALER DELIVERY REPORT / WARRANTY CARD.....	Page 31
SERVICE RECORD.....	Page 32

### **STATEMENT OF FACT**

You have just purchased the highest quality, most maneuverable, dependable, **GREENS ROLLER** on the market today. This unit meets exact standards and will perform for years with minimum downtime. HOWEVER, it cannot read, nor will it understand this manual no matter how long you leave it on top of the machine.

**It is your responsibility** to read and understand this manual; it is also your responsibility to be certain this information is passed along to anyone who is expected to operate this equipment. Should you choose not to read, understand, and pass along the information provided you, please expect equipment failure and possible injuries to persons around this equipment.

For the safety of the operator, it is **imperative** that this manual is carefully read and understood.

Once you have read this manual, it is your responsibility to be sure that all new operators read and understand this manual, especially all cautions stated.

As a manufacturer of equipment, we have a responsibility to design a safe piece of equipment. NOTE: The important safeguards and instructions in this manual are not meant to cover all possible conditions and situations that may occur. It must be understood that common sense, caution, and care are factors, which cannot be built into any product. These factors must be supplied by the person(s) caring for and operating this equipment.

### **ONLY YOU CAN PREVENT ACCIDENTS**

**SPECIFICATIONS AND FEATURES**  
**MODELS 09065, 09066, 09067 - GAS GREENS ROLLER**

The Salsco Greens Roller is a multi-purpose tool, which, in a short time, has become a must-have for many golf courses. Our unit can be used on GREENS, WET OR DRY, and will increase ball speed an average of 1-2 feet. However, that's only part of the story. We can ROLL SOD, CLAY TENNIS COURTS, CART PATHS, SUBBASE FOR NEW GREENS CONSTRUCTION, WET GREENS, WET SPOTS ON FAIRWAYS, etc., etc. Because of traction and maneuverability this machine is ready and able when you are.

**Drive System**

An 13HP Honda, gasoline, pull start engine powers our unit. Power is delivered to a Hydrostatic Pump through a love-joy coupling. Fluid power is then transmitted through 3,000 P.S.I. (12,000-lb. burst) hoses to drive motors. Drive motors change fluid power to mechanical power and transmit it through #50 chain to the rolls. We drive both 10" diameter rolls. This gives us not only the best traction in the roller business, but only 4.2 lbs. per square inch of weight. Compaction is not an issue at 4.2 P.S.I. (a 200 lb. person = 12.5 P.S.I.)

**Compaction is Never a Problem**

4.2 P.S.I. puts compaction at the lowest possible level. We want to smooth out the surface, not change it or compact it. Both rolls can be filled with water which will add approximately 128 lbs. and 1.4 P.S.I. to the already 4.2 P.S.I. = 5.6 P.S.I. for rolling out frost heaves, tees or after verti-draining.

The Salsco Roller is very user friendly, with automotive type steering and smooth pedal controls. Operators need very little time to get comfortable with this machine, usually before the first green is done.

The Salsco Roller comes standard with its own trailer. When not in use with the roller, it can be used for many other tasks. An example would be for transporting greens mowers from green to green.

## **MACHINE REGISTRATION**

MANUFACTURED BY: SALSCO, INC.  
105 Schoolhouse Rd., Cheshire, CT 06410  
800-872-5726, 203-271-1682, 203-271-2596 (Fax)  
[receptionist@salsco.com](mailto:receptionist@salsco.com); [www.salsco.com](http://www.salsco.com)

THIS MANUAL COVERS MODEL(s): MODELS 09065, 09066, 09067 GAS ROLLERS

This company reserves the right to discontinue, add improvements to, or change the design of any model or product at any time without obligation to improve existing machines, either by changing the design or adding new parts.

It has been and will continue to be the policy of SALSCO to update existing machines at its own discretion. Whenever possible, new designs will be made in such a way that they can be "Retro Fit" if so desired.

Record in the space provided below the model and serial number of this unit. Please retain these numbers for future reference.

No parts orders will be accepted **WITHOUT SERIAL NUMBERS AND PART NUMBERS**. All part numbers are listed in this manual.

Serial Number \_\_\_\_\_ Model Number \_\_\_\_\_

NOTE: Be sure to complete your warranty card. This will ensure immediate processing of any warranty claims.

## **READ AND UNDERSTAND THIS MANUAL BEFORE STARTING MACHINE**

### **SAFETY INSTRUCTIONS**

1. **NEVER** leave unit running while unattended.
2. **NEVER** park on a green for any reason.
3. **NEVER** go down steep hills sideways. **ALWAYS** approach hills straight on.
4. **NEVER** change your mind mid-way down a steep incline. Once you have started down a steep incline, change direction only with the greatest of care and gentlest touch.
5. Allow engine to cool for several minutes before filling with fuel, since fuel tank is over the engine.

**NOTE: HONDA ENGINES - ALWAYS TURN OFF THE FUEL SHUTOFF, WHEN THE ENGINE IS NOT RUNNING, i.e., WHEN IN TRANSPORT, STORAGE, ETC.**

### **OPERATING INSTRUCTIONS**

1. Check that the unit has been serviced and all fluids are checked and topped off.
2. Check all hydraulic hose fittings.
3. Push fuel shut off switch to on position.
4. Push choke to full on position
5. Push throttle to just above idle.
6. Turn on/off switch to on position.
7. You should start engine from seat position. Just reach down to engine controls. Keep feet off pedals. Hydrostatic drive should come to neutral when engine starts.
8. Pull rope and engine will come to life. Hydrostatic transmission should come to neutral when engine is started. **REMEMBER: RIGHT PEDAL TO GO RIGHT, LEFT PEDAL TO GO LEFT.**
9. Slide choke to full off position.
10. Once unit is running at just above idle, push pedal down slowly. Unit will begin to move. Drive it out of trailer on to grass area.
11. Since the unit is hydrostatic, engine should run at full R.P.M. and speed should be controlled by pressure on the pedal.

## HINTS

1. **KEEP BOTH FEET ON PEDALS AT ALL TIMES.** By keeping your heels planted and moving your toes to change direction, you have smooth control - left to right.
2. If you roll the same direction as green was mowed, it is easy to follow the lines. This helps a new operator do a fine job sooner.
3. To ensure longer life to your unit, when changing direction do so smoothly.

## **SERVICE & MAINTENANCE INSTRUCTIONS**

1. Check all hydraulic hoses **DAILY, or before each scheduled use**, for wear and any signs of chaffing. **REMINDER:** Drive motor hoses should be treated as wear items and should be replaced on a yearly basis.
2. Check all fittings for any signs of leaking **DAILY, or before each scheduled use**.
3. Check all grease fittings as listed below on a **WEEKLY** basis, and grease as necessary. (Add grease till grease leaks slightly from fitting.)
  - ♦ Bearings on roll housings - Quantity 4
  - ♦ Pivot bearing on main housing - Quantity 2
  - ♦ U-Joint on steering shaft - Quantity 1
4. Check engine to manufacturers specifications and maintenance. **THIS ENGINE HAS AN OIL SHUT OFF SWITCH. CHECK OIL LEVEL FREQUENTLY AS THE UNIT WILL STALL ON INCLINES IF OIL LEVEL IS LOW.**
5. Fill hydraulic tank to 4-6" below filler cap. Be sure to tighten cap till cap seals.
6. After approximately **1 WEEK** of use, **and then every 2 WEEKS thereafter**, check drive chains - one on each side on roller drive motor. Pivot motor to tighten chain. **NOTE:** Check and adjust the tension of both drive motor chains on a regular basis. If chains are not tight, this could cause severe sprocket wear and possible breakage.
7. Pivot for articulating steering should be tight, **with no play**, much the same as wheel bearings on cars.
8. **Keep unit clean.** Should rust form on rolls, simply drive the unit on a rough area till rolls are clean.
9. **Oil & Filter Type** - It has been determined that your Salsco machine will perform better by using a 25-micron filter. Salsco recommends using Mobil DTE 26 or Citgo HYD 68, non-detergent hydraulic oil, or their equivalents. The oil should have a viscosity rating of at least 100 SSU. While this is not a necessity, it will improve the overall performance of your machine. Salsco is now using this filter and hydraulic oil on all our machines using hydraulics.

**SAFETY IS A PRIME CONCERN AT SALSCO AND THE SAFETY DECALS ON YOUR MACHINE ARE A HIGHLY VISIBLE AND CONSTANT REMINDER TO ALL OPERATORS. REPLACEMENT SAFETY DECALS MAY BE OBTAINED BY CALLING SALSCO @ 1-800-872-5726, OR THE DEALER IN YOUR AREA.**



## GAS GREENS ROLLER SERVICE INTERVAL SCHEDULE

After \_\_\_ hours / Daily / Weekly / Yearly / See vendor manual

### ENGINE - Check Honda service manual for recommended service intervals.

	H	D	W	Y	MANUAL
Check oil level		X			
Change oil	500				
Change oil filter	500				
Change fuel filter	500				
Check all for leaks		X			

### HYDRAULIC SYSTEM

	H	D	W	Y	MANUAL
Grease hydraulic cylinders, pins, etc. where applicable			X		
Check for leaks (all hoses and fittings at both hose ends)		X			
Check hydraulic oil level ... <i>only if you see leaks</i>					
Change hydraulic oil First 500	1000				
Change hydraulic oil filter First 500	1000				
Inspect hoses for chafing, cracks, etc. and assure nothing impedes		X			

### ADJUSTMENTS & DRIVES

	H	D	W	Y	MANUAL
Check all nuts, bolts, other fasteners for tightness			X		
Check chains for proper lubrication, wear, and tension			X		
Check belts for proper wear and tension (is belt dressing recommended?)			X		
Grease bearings, cylinders, steering shaft (is this a sealed bearing?)			X		

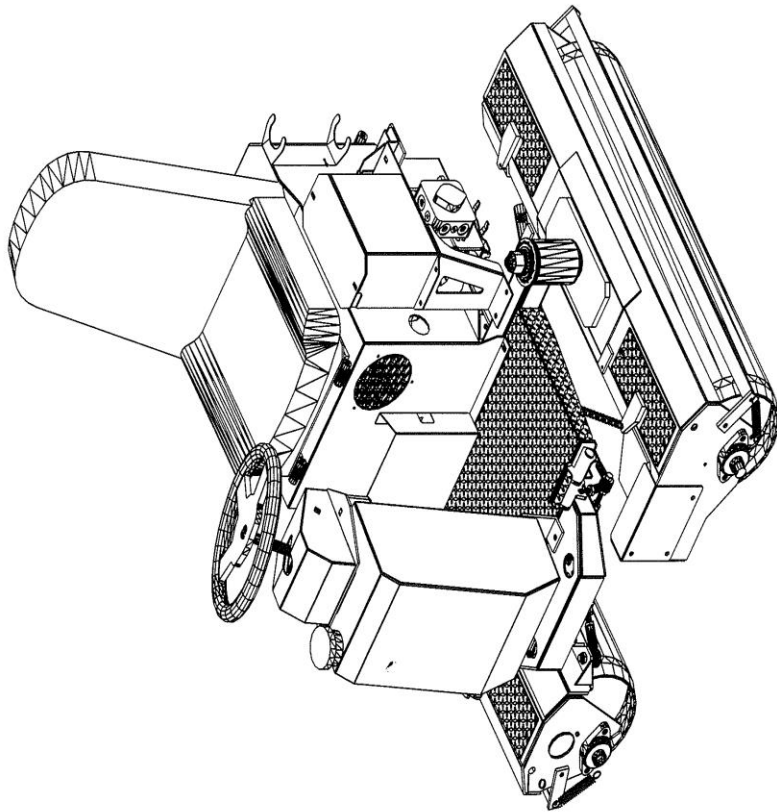
### TRAILER

	H	D	W	Y	MANUAL
Check tire pressure (recommended pressure)			X		
Inspect tires for dry rot, tread wear, damage, etc.		X			
Grease axle and wheel hubs				X	

### RECOMMENDED OIL - Fill within 6" of the top to avoid overflow when it gets hot.

Models 09065 / 09067	AW68 Hydraulic Oil
HP11	AW68 Hydraulic Oil
HP5.5	AW68 Hydraulic Oil
HP11-III	15-50 Motor Oil
Roll-n-Go, EHA	15-50 Motor Oil
Tranz-Former, EHA 5-G	10-40 Motor Oil

ISSUED: 07-15-2008



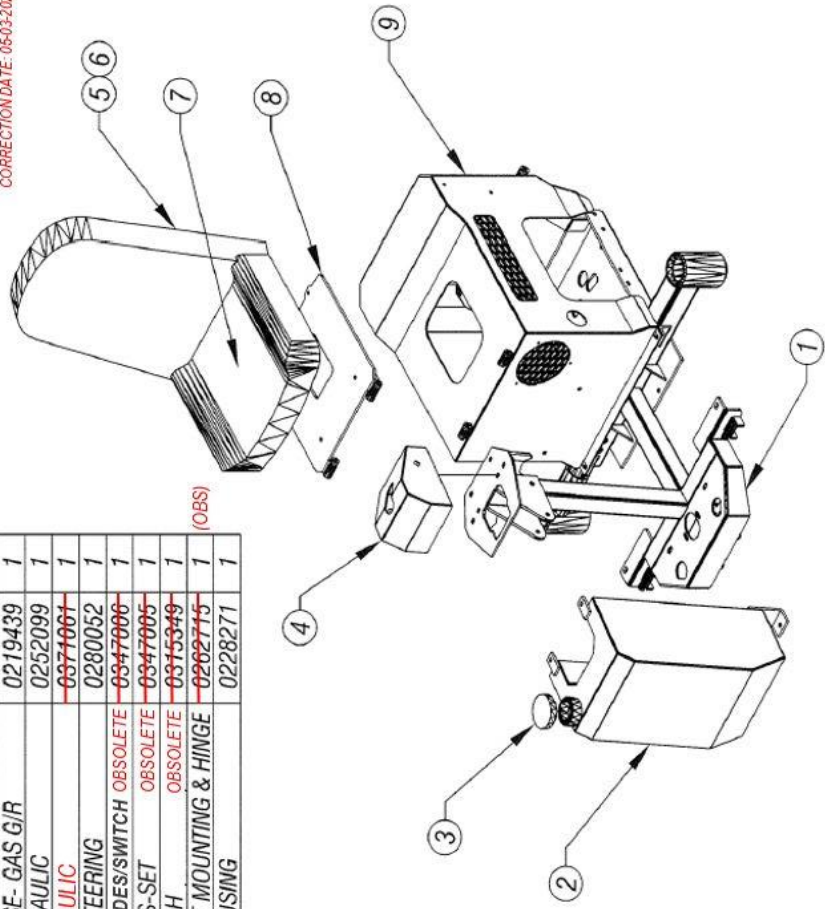
COMPLETE GAS GREENS ROLLER - DWG #1

ISSUED: 07-15-2008  
CORRECTION DATE: 05-03-2022

ITEM	DESCRIPTION	PART NO	QTY
1	FRAME, BASE- GAS G/R	0219439	1
2	TANK, HYDRAULIC	0252099	1
3	CAP, HYDRAULIC	<del>0371061</del>	1
4	BOX, TILT STEERING	0280052	1
5	SEATING SLIDES/SWITCH	<del>0347006</del>	1
6	SEAT SLIDES-SET	<del>0347005</del>	1
7	SEAT SWITCH	<del>0315349</del>	1
8	PLATE, SEAT MOUNTING & HINGE	<del>0262715</del>	1
9	ENGINE HOUSING	0228271	1

Replaced with 0271496-N  
Replaced with 0347009-N  
Replaced with 0315397-N  
Replaced with 0290048-N  
for SN 5175 and below.

(OBS)

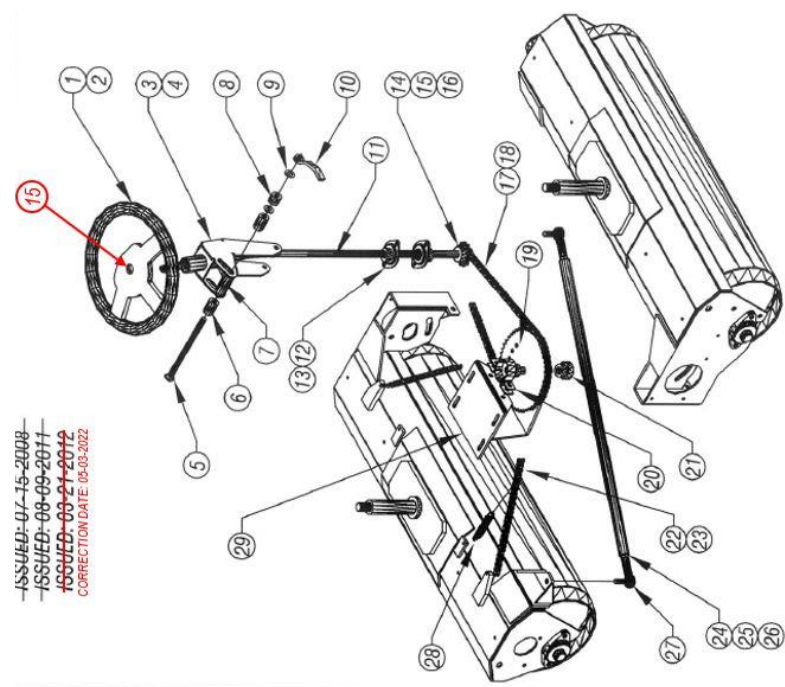


GAS GREENS ROLLER - DWG #2

ITEM	DESCRIPTION	PART NO	QTY
1	STEERING WHEEL	0306052	1
2	CAP. STEERING WHEEL	0306124	1
3	ARM, TILT WHEEL STEERG PIVOT	0265113	1
4	BUSHING, OILLITE	0307038	2
5	CARRIAGE BOLT	0346458	1
6	DOM TUBE - 1" OD x 1/4 WALL x 1.515 LG		2
7	DOM TUBE - 1" OD x 1/4 WALL x 2.500 LG		1
8	DOM TUBE - 1" OD x 1/4 WALL x .875		1
9	WASHER, FLAT - UHMW	0353333	2
10	EASY GRIP HANDLE - (1/2 - 13)	0323142	1
11	FLEXIBLE SHAFT	0449329	1
12	FLANGETTE, (2) BOLT	0303005	4
13	BEARING INSERT - 3/4 ID	0303023	2
14	SPROCKET, STEERING 40B12X34	0351003	1
15	KEY - 3/16 SQ x 1" LONG	0431004	1
16	COLLAR, SET LOCKING, 3/4"	0311006	1
17	ROLLER CHAIN, 101 PITCH 0	0309012	1
18	CONNECTING LINK #40	0309006	1
19	SPROCKET & SHAFT ASSY	0251014	1
20	PILLOW BLOCK FLANGETTE	0303024	2
21	BEARING INSERT 3/4" ID	0303023	2
22	ROLLER CHAIN #50 67 PITCH	0309013	1
23	CONNECTING LINK #50	0309008	2
24	TIE ROD	0245008	1
25	JAM NUT, 1/2 - 20	0338058	2
26	LOCK WASHER 1/2", GR 8	0353015	2
27	ROD END 1/2" - 20 X 1/2"	0303017	2
28	EXTENSION SPRING	0350009	2
29	BRACKET, STEERING SPROCKET	0206120	1

Replaced w/ 0354142-N  
Replaced w/ 0354143-N  
Use part 0449394-N  
Use part 0449395-N  
Use part 0449396-N  
Replaced w/ 0248404-N

ISSUED: 07-15-2008  
ISSUED: 08-09-2011  
ISSUED: 03-21-2012  
CORRECTION DATE: 03-03-2022



GAS GREENS ROLLER - DWG #3

THIS PAGE, DRAWING #4, REFERS TO SN 3376 AND LOWER, ROLLER SHAFT 4"

ISSUED: 04-15-2008  
~~ISSUED: 05-09-2011~~  
CORRECTION DATE: 05-03-2022

ITEM	DESCRIPTION	PART NO	QTY
1	FRAME, BASE	0219375	1
2	HOUSING, OSCILLATOR	0228164	1
3	HOUSING, ROLLER-OSCILLATING	0228260	1
4	BEARING, 2-BOLT FLANGE	0303006	4
5	SHAFT/ROLLER 1" SHAFT	0248065	2
6	PLUG, 3/4 NPT	0317072	2
7	SPROCKET, ROLL	<del>0051012</del>	2
8	CHAIN, #50, 51 PITCH	0309011	2
9	CONNECTING LINK #50	0309008	2
10	GUARD, HYD MOTOR DRIVE	0421029	2
11	SPACER, HYDRAULIC MOTOR	0449233	2
12	HYDRAULIC MOTOR	0330139	2
13	SPROCKET, HYD MOTOR	<del>0051013</del>	2
14	YOKE KIT	0374020	2

Requires spacer 0449309-N when ordering

Superseded by 0251203-N  
50832X1, units 3376 and lower  
Also requires 0300022-N  
#50 half-link, Qty 2

Superseded by 0251186-N  
units 3376 and lower

Includes threaded rod with nut and bolt.

NOTE:  
AFTER MACHINE SN 3377  
SEE MANUAL DWG #44  
FOR NEW PART NUMBERS

15	ADJUSTER MOTOR CHAIN YOKE	0201043	2
16	HOUSING, ROLLER-STEERING	0228259	1
17	BEARING CUP	<del>0000016</del>	4
18	CONE BEARING	<del>0000016</del>	4
19	FLAT WASHER	0353106	2
20	CAP, LUG NUT OBSOLETE	<del>0000016</del>	2
21	JAM NUT	0338060	2
22	WASHER	0453117	4
23	O-RING-3" ID	0343003	4
24	SPACER, STL-1 1/4 ODx 12WALLx1.25	<del>STOCK</del>	2
25	COLLAR, SINGLE SPLIT	0311010	6
26	SPACER, STL-1 1/4 ODx 12WALLx.550	<del>STOCK</del>	2
27	WASHER, FLAT - 1 1/4 ID	0353122	2

Superseded by 0303090-N

Superseded by 0303089-N

Use part 0449397-N

Use part 0449271-N

SEE NOTE

NOTE:  
USING OPTION KIT ATTACHMENT  
(SEE DWG # 10)  
REPLACE ITEM #22 WITH  
ITEMS #21, SHOWN ON DWG #10

0346344: Bolt

0331112-N: Keyway

GAS GREENS ROLLER - DWG #4

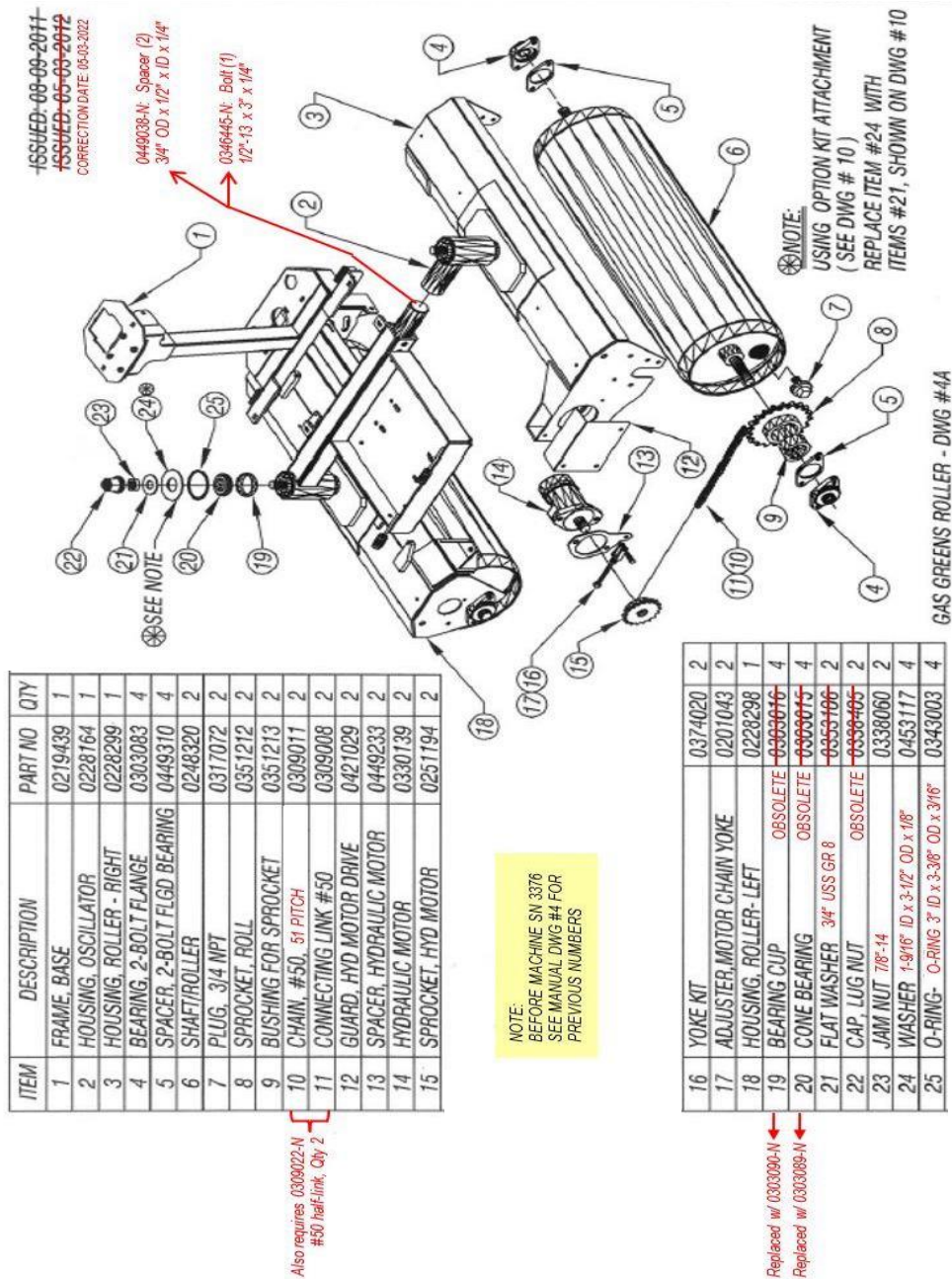
0331506-N: Woodruff Key

0346069-N: Bolt on end of 0251186-N (hyd motor sprocket)

Gas Roller Models 09065, 09066, 09067 Manual Rev. 03-24-2023

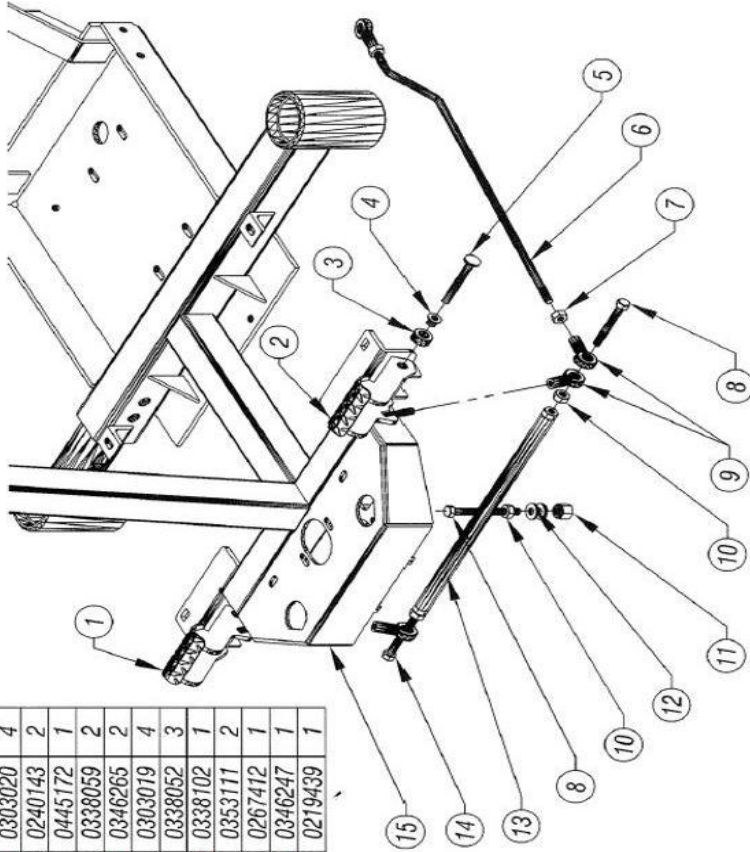
- 12 -





ISSUED: 07-15-2008  
CORRECTION DATE: 03-03-2022

ITEM	DESCRIPTION	PART NO	QTY
1	PEDAL, FOOT- RIGHT	0268028	1
2	PEDAL, FOOT- LEFT	0268029	1
3	COLLAR, SET SPLIT, 3/8"	0311031	2
4	BUSHING, FLGD- OILITE 3/8" ID	0303020	4
5	PIN, FOOT PEDAL PIVOT	0240143	2
6	ROD, FORWARD/REVERSE	0445172	1
7	JAM NUT, 3/8-24	0338059	2
8	SCREW, HEX HEAD 3/8"-16 X 2-1/2"	0346265	2
9	ROD END 3/8"-24	0303019	4
10	JAM NUT, 3/8-16	0338052	3
11	LOCK NUT, NYLON INSERT 3/8"-16	0338102	1
12	FLAT WASHER 3/8" USS GR 8	0353111	2
13	TUBE, STEERING	0267412	1
14	SCREW, HEX HEAD 3/8"-16 X 1-1/2"	0346247	1
15	FRAME, BASE	0219439	1



GAS GREENS ROLLER - DWG #5

ISSUED: 12-22-2008  
~~ISSUED: 02-26-2013~~  
 CORRECTION DATE: 05-03-2022

ITEM	DESCRIPTION	PART NO	QTY
1	ENGINE, 8HP HONDA <del>DISCONTINUED</del>	<del>0337021</del>	1
2	ENGINE, 9HP HONDA-ELEC. START	0337336	1
3	ENGINE, 13HP HONDA-ELEC. START	0337033	1
4	GAS CAP W/ CHARCOAL FILTER	<del>0371411</del>	1
5	FUEL SCREEN FILTER	<del>0346048</del>	1
6	BELL HOUSING	0328059	1
7	PUMP SUPPORT BRACKET	0477231	1
8	RUBBER MOUNT, VIBRT DAMPG	0376250	1
9	BRACKET, VIBRATION DAMPING	0406877	1
10	FILTER BRACKET	0206131	1

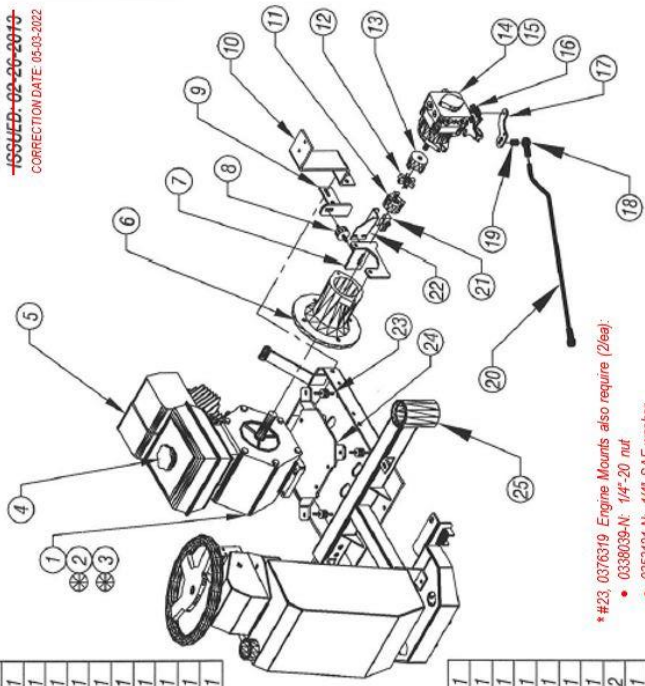
Replaced w/ 0337742-N, 9-HP  
 Replaced w/ 0371495-N  
 Sold as part of assy with 0371495-N  
 Thread 5/16"-18

⊗ OPTION (SEE NOTE)

NOTE:  
 9HP & 13HP HONDA - ELECTRIC START,  
 INCLUDES BATTERY COMPONENTS  
 SHOWN ON DWG #8

11	HUB, LOVEJOY COUPLER 1" x 1/4" KW	0313003	1
12	SPIDER COUPLING	0313004	1
13	HUB, 15mm BORE 5 X 2.3MM KW	0313005	1
14	HYDRAULIC PUMP	0330146	1
15	SEAL KIT - HYDRAULIC PUMP	0330173	1
16	LINKAGE - RETURN TO NEUTRAL	0330175	1
17	LEVER, HYD PUMP- EXTENDED	0433209	1
18	ROD END 3/8"-24	0303019	2
19	SPACER STL - 3/8" ID X 5/8" OD X 11/16"	<del>0370004</del>	1
20	ROD, FORWARD / REVERSE	0445172	1
21	SWITCH, SNAP ACTION (NEUTRAL)	0315375	1
22	BRKT. SWITCH MOUNTG (NEUTR.)	0406978	1
*23	RUBBER MOUNT 1/4"-20	0376319	4
24	PLATE, ENGINE MOUNT	0462462	1
25	FRAME, BASE	0219439	1

For SN 1588 and  
 lower use 0233018-N  
 Use part 0449386-N



\*#23, 0376319 Engine Mounts also require (2ea):  
 • 0338039-N: 1/4"-20 nut  
 • 0353121-N: 1/4" SAE washer  
 • 0353119-N: 1/4" USS washer  
 • 0353201-N: 1/4" fender washer

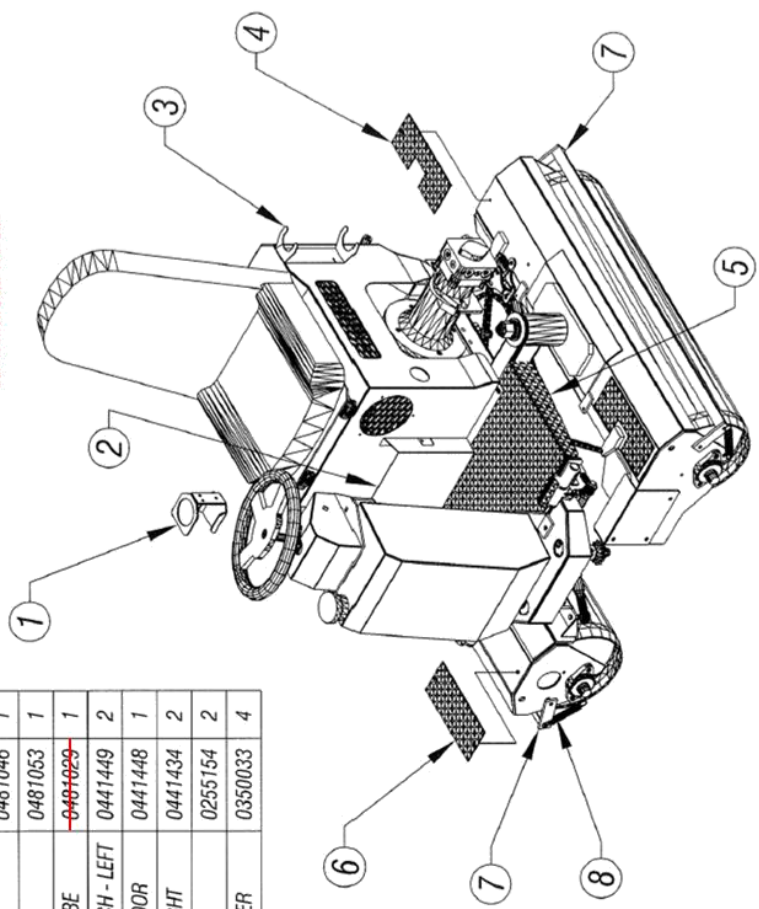
GAS GREENS ROLLER - DWG #6



ITEM	DESCRIPTION	PART NO	QTY
1	CAN HOLDER	0481046	1
2	HOLDER, CLIPBOARD	0481053	1
3	HOLDER, MANUAL TUBE	<del>0481029</del>	1
4	PLATE, DIAM. W/NOTCH - LEFT	0441449	2
5	PLATE, DIAMOND- FLOOR	0441448	1
6	PLATE, DIAMOND- RIGHT	0441434	2
7	SCRAPER, ROLL	0255154	2
8	SPRING, EXT.- SCRAPER	0350033	4

Replaced w/ 0381057-N

~~ISSUED: 07-15-2008~~  
CORRECTION DATE: 05-03-2022



GAS GREENS ROLLER - DWG #7

ISSUED-05-18-2010  
 ISSUED-05-17-2012  
 ISSUED-01-11-2013  
 CORRECTION DATE: 05-03-2022

ITEM	DESCRIPTION	PART NO	QTY
1	BOX, HEADLIGHT	0280014	2
2	HEADLIGHT LENS DISCONTINUED	<del>0315136</del>	2
3	BULB, HEADLIGHT-90°	0315343	2
4	PIGTAIL, HEADLIGHT FOR 90° BULB	0315137	2
5	LOOM, SPLIT, 3/8 DIA	STOCK	1
6	MOUNT, BATTERY BOX	0276679	1
7	BATTERY BOX	0280053	1
8	COVER, BATTERY BOX	0480012	1
9	BATTERY, 12 VOLT	0336008	1
10	CONNECTOR, BATTERY WIRE	0315083	4
11	WIRE, 14 GAUGE (BLACK)	STOCK	1

0315316-N: 90° bulb only

Replaced w/ 0315413-N  
 Can also use 0315138-N

For light kit 0061102-N  
 Cannot ship, must purchase local  
 16-14 GA, 5/16" eyelet ring

NOTE "A": 1/2 DIA DRILL THRU  
 FOR TOGGLE SWITCH  
 LOCATE AS SHOWN.

NOTE "B": 9/32 DRILL THRU  
 (2) HOLES IN BOTH ROLL HSGS  
 LOCATE FROM HEADLIGHT BOX.

"C": NOT INCLUDED- AFTER MARKET

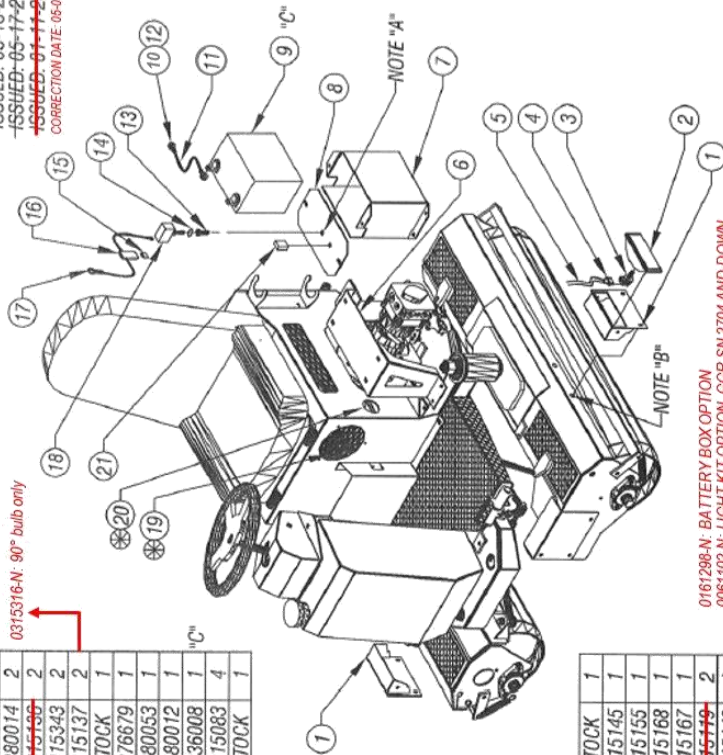
⊗ THIS ITEMS ARE STANDARD ON  
 13HP HONDA ENGINE ONLY

12	WIRE, 14 GAUGE (RED)	STOCK	1
13	BOOT, TOGGLE	0315145	1
14	PLATE, ON / OFF	0315155	1
15	FUSE, (IN LINE)	0315168	1
16	HOLDER, FUSE	0315167	1
17	CONNECTOR, SWITCH	<del>0315119</del>	2
18	SWITCH, TOGGLE	0315143	1
19	DC ELECTRIC FAN	0315370	1
20	HOUR METER	0315369	1
21	RELAY, STANDARD 12V SPDT	0315409	1

Light wire harness  
 (not shown)

Replaced w/ 0315305-N

If ordering fan to replace to  
 to replace older model, may  
 may need to upgrade rocker-  
 switch (0315390-N) to relay  
 switch (0315409-N)



0161288-N: BATTERY BOX OPTION  
 0061102-N: LIGHT KIT OPTION, GGR SN 2704 AND DOWN  
 0161323-N: LIGHT KIT OPTION, GGR SN 2705 AND UP

GAS GREENS ROLLER - DWG #8

► Replaced w/ 0315397-N

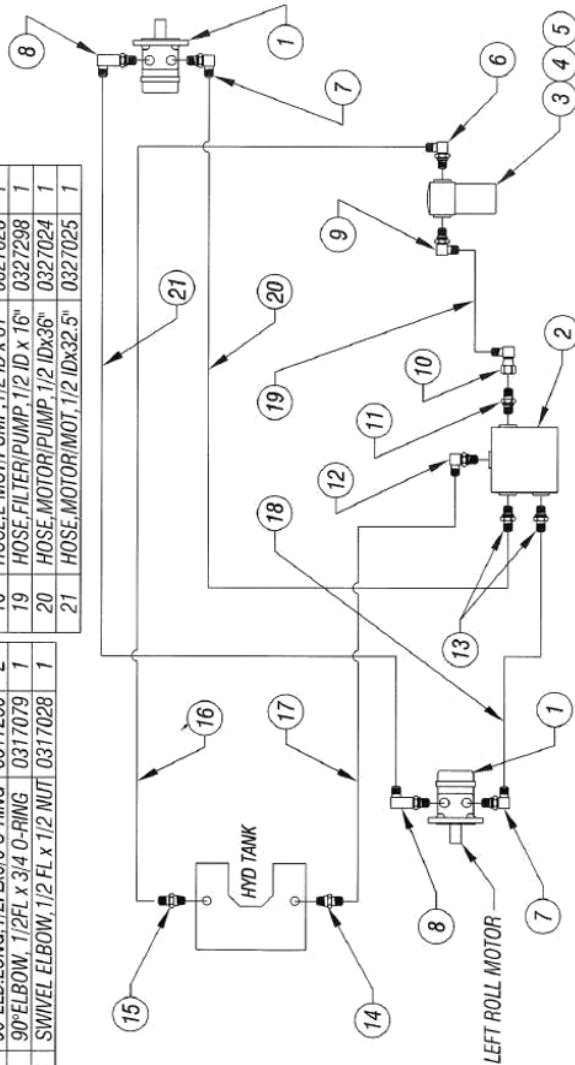
SEAT (REF. ONLY)

- 18 -

ISSUED-07-15-2008  
CORRECTION DATE 09-03-2022

ITEM	DESCRIPTION	PART NO	QTY	ITEM	DESCRIPTION	PART NO	QTY
1	HYD DRIVE MOTOR	0330139	2	11	CONNECTOR, 1/2 FL x 3/8 O-RING	0317066	1
2	HYD PUMP	0330146	1	12	90° ELBOW, 3/8 FL x 3/8 O-RING	0317029	1
3	HYD FILTER HOUSING ONLY	0318039	1	13	CONNECTOR, 1/2 FL x 1/2 O-RING	0317030	2
4	HYD FILTER & HOUSING	0318022	1	14	CONNECTOR, 3/8 FL x 1/2 MNPT	0317050	1
5	OIL FILTER ELEMENT ONLY	0318023	1	15	CONNECTOR, 5/8 FL x 1/2 MNPT	0317062	1
6	90° ELBOW, 5/8 FL x 3/4 O-RING	0317214	1	16	HOSE, TANK/FILTER, 5/8 ID x 52"	0327026	1
7	90° ELBOW, 1/2 FL x 5/8 O-RING	0317008	2	17	HOSE, TANK/PUMP, 3/8 ID x 39"	0327313	1
8	90° ELB LONG, 1/2 FL x 5/8 O-RING	0317250	2	18	HOSE, L-MOT/PUMP, 1/2 ID x 31"	0327028	1
9	90° ELBOW, 1/2 FL x 3/4 O-RING	0317079	1	19	HOSE, FILTER/PUMP, 1/2 ID x 16"	0327298	1
10	SWIVEL ELBOW, 1/2 FL x 1/2 NUT	0317028	1	20	HOSE, MOTOR/PUMP, 1/2 ID x 36"	0327024	1
				21	HOSE, MOTOR/MOT, 1/2 ID x 32.5"	0327025	1

Replaced w/ 0317055-N



HYDRAULIC COMPONENTS, FITTINGS & HOSES  
GAS GREENS ROLLER - DWG #10

ITEM	DESCRIPTION	PART NO	QTY	ITEM	DESCRIPTION	PART NO	QTY
1	KIT- ATTACHMENT FRAME, LEFT	0161223	1	12	BEARING, ROD END	0303019	2
2	KIT- ATTACHMENT FRAME, RIGHT	0161235	1	13	ROD, ARM LIFTING	0245158	1
3	SHAFT, TOURNAMENT ROLL	0248229	1	14	BRKT, LIFTING ARM SWIVEL	0206783	1
4	AIR SPIKE ASSEMBLY	0161225	1	15	ARM, TOURNAMENT ROLL & SPIKE	0265102	2
5	BRUSH ASSEMBLY	0161041	1	16	BEARING, 2-BOLT FLANGE	0303006	2
6	BRUSHES	0336060	2	17	BRKT, TRMT ROLL&SPIKE- RIGHT	0206789	1
7	FRAME, BRUSH KIT	0228067	1	18	LEVER, RIGHT	0433179	1
8	SHAFT, C.R.S. ROD-1"DIAx39"LG	0448226	1	19	BRKT, TRMT ROLL&SPIKE- LEFT	0206791	1
9	WASHER, FLAT USS - 1" ID	0353150	2	20	LEVER, LEFT	0433176	1
10	BLADE, AIR SPIKE	0405113	32	21	SPACER, ROLL HOUSING-UPPER	0449208	2
11	SPACER, AIR SPIKE BLADES	0449207	64				

NOTE: THIS ASSY IS ON THE LEFT HAND SIDE SITTING ON THE ROLLER

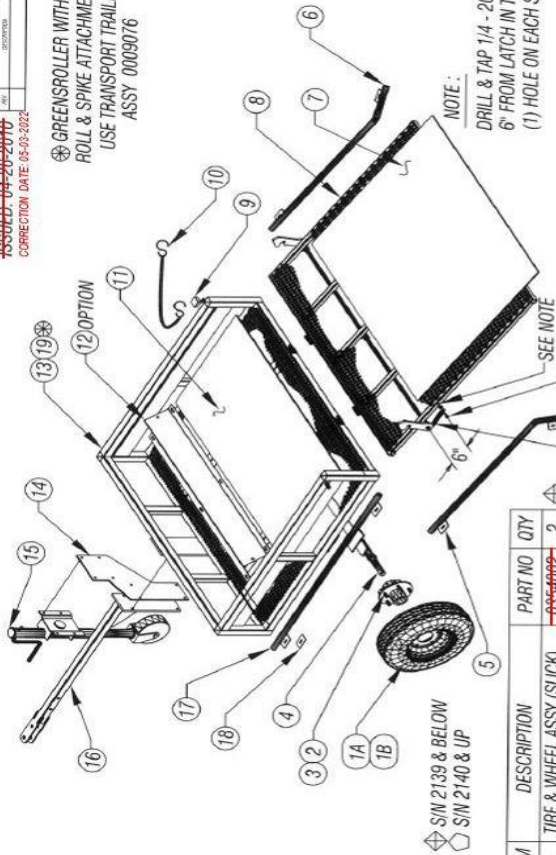
TOURNAMENT OPTION KITS  
GAS GREENS ROLLER - DWG #11



ISSUED: 04-20-2010  
 CORRECTION DATE: 03-05-2022

REV	DESCRIPTION	DATE

GREENROLLER WITH  
 ROLL & SPIKE ATTACHMENTS,  
 USE TRANSPORT TRAILER  
 ASSY 0009076



0354020-N: Vertical tread  
 0354156-N: Horizontal tread  
 also available

ITEM	DESCRIPTION	PART NO	QTY
1A	TIRE & WHEEL ASSY (SLICK)	<del>0354002</del>	2
1B	TIRE & WHEEL ASSY (TREADED)	0354020	2
2	HUB 5.4" Ø SCROLLER 12" STD - 8"	<del>0359002</del>	2
3	LUG NUT 1/2" - 20	0338306	10
4	AXLE 48" L	0202074	1
5	GUIDE, TAILGATE ROLL - LEFT	<del>0222172</del>	1
6	GUIDE, TAILGATE ROLL - RIGHT	<del>0222173</del>	1
7	RUBBER MAT, (TAILGATE)	0356043	1
8	TAILGATE	0219371	1
9	CAP (PLASTIC)	0371001	4
10	BUNGEE CORD	0308013	1
11	RUBBER MAT, (BOX)	0356041	1

OBSOLETE

Replaced w/ 0329100-N  
 (Includes bearing kit)

Replaced w/ 022212-N

Replaced w/ 022209-N

DISCONTINUED

Replaced w/ the following:

- Rubber stops (2)
- 029143-N (2) bracket
- 0338102-N (2) 3/8" nylock
- 0346249-N (2) 3/8" x 1" bolt

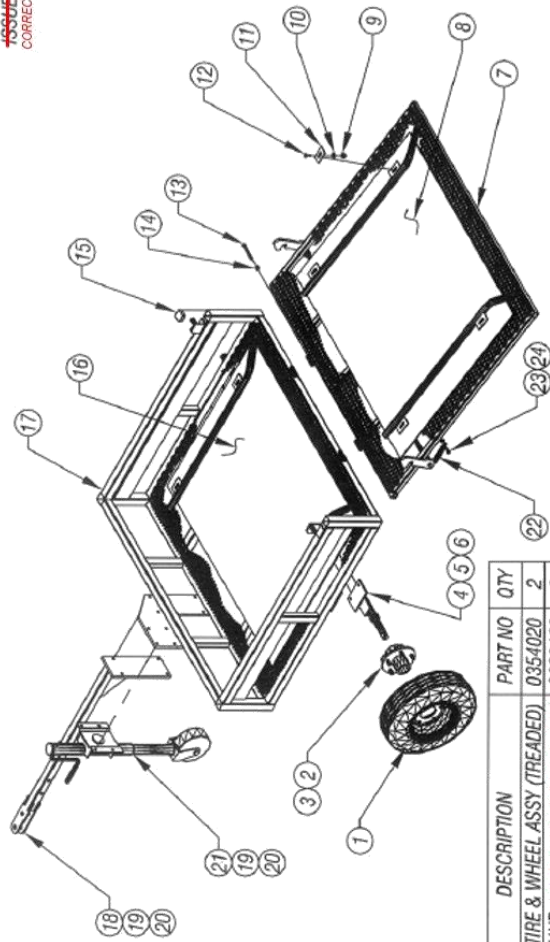
12	STOP ROLLER MOVEMENT	<del>0462006</del>	1
13	TRAILER FRAME	0219372	1
14	PLATE JACK MOUNTING	0462410	1
15	JACK, SWIVEL- WITH CASTER	0369047	1
16	TONGUE	0225011	1
17	GUIDE, TRAILER ROLL	0222171	2
18	CLAMP PLATE	0462585	8
19	TRAILER FRAME	0219447	1
20	SPRING, EXTENSION	0350009	2
21	BOLT, HEX HD (1/4-20x1 1/4 LG)	0346072	2
22	JAM NUT (1/4 - 20)	0338039	2

TRANSPORT TRAILER ASSY  
 0009014

AND

TRANSPORT TRAILER ASSY  
 0009076

GAS GREENS ROLLER  
 DWG #12



0354020-N: Vertical tread  
also available  
0354156-N: Horizontal tread

Replaced w/ 0303116-N  
Replaced w/ 0202074-N

ITEM	DESCRIPTION	PART NO	QTY
1	TIRE & WHEEL ASSY (TREADED)	0354020	2
2	HUB 6-4.5" BC IDLER 1/2" STUD, 8" WHEEL	0329100	2
3	WHEEL BEARING KIT	<del>0906066</del>	2
4	AXLE	<del>0906116</del>	1
5	HEX HEAD SCREW	0346204	12
6	LOCK NUT	0338102	12
7	TAIL GATE	0219492	1
8	RUBBER MAT, (TAILGATE)	0356043	1
9	LOCK NUT, (NYLON INSERT)	0338101	12
10	FLAT WASHER	0353101	12
11	PLATE, HOLD DOWN GUIDES	0462585	10
12	CARRIAGE BOLT	0346130	12
13	HEX SCREW	0346217	2

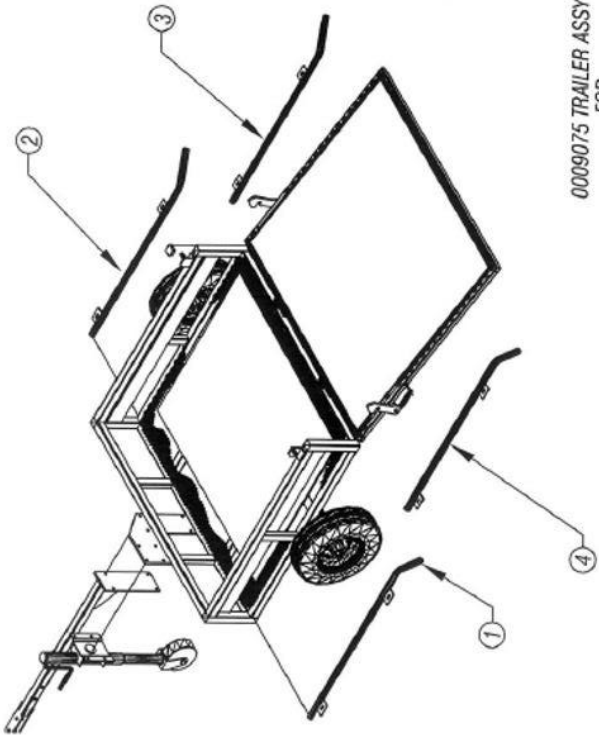
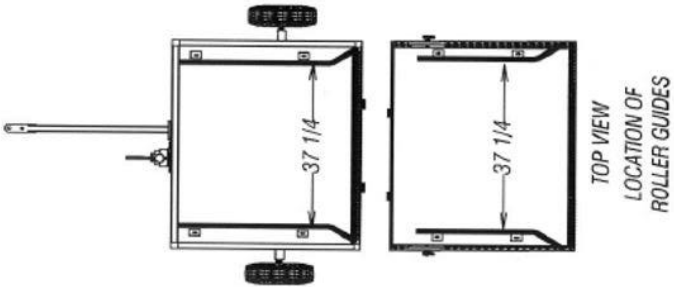
14	HEX NUT	0338102	2
15	CAP (PLASTIC)	0371001	4
16	RUBBER MAT, (TRAILER)	0356041	1
17	TRAILER FRAME	0219491	1
18	TONGUE	0225011	1
19	HEX HEAD SCREW	0346204	8
20	LOCK NUT, (NYLON INSERT)	0338102	8
21	JACK, SWIVEL- WITH CASTER	0369047	1
22	SPRING, EXTENSION	0350009	2
23	BOLT, HEX HD - 1/4 - 20x1 1/4 LG	0346072	2
24	JAW NUT - 1/4 - 20	0338039	2

0009075 TRAILER ASSY  
FOR  
GAS GREENS ROLLER

GAS GREENS ROLLER  
DWG #13

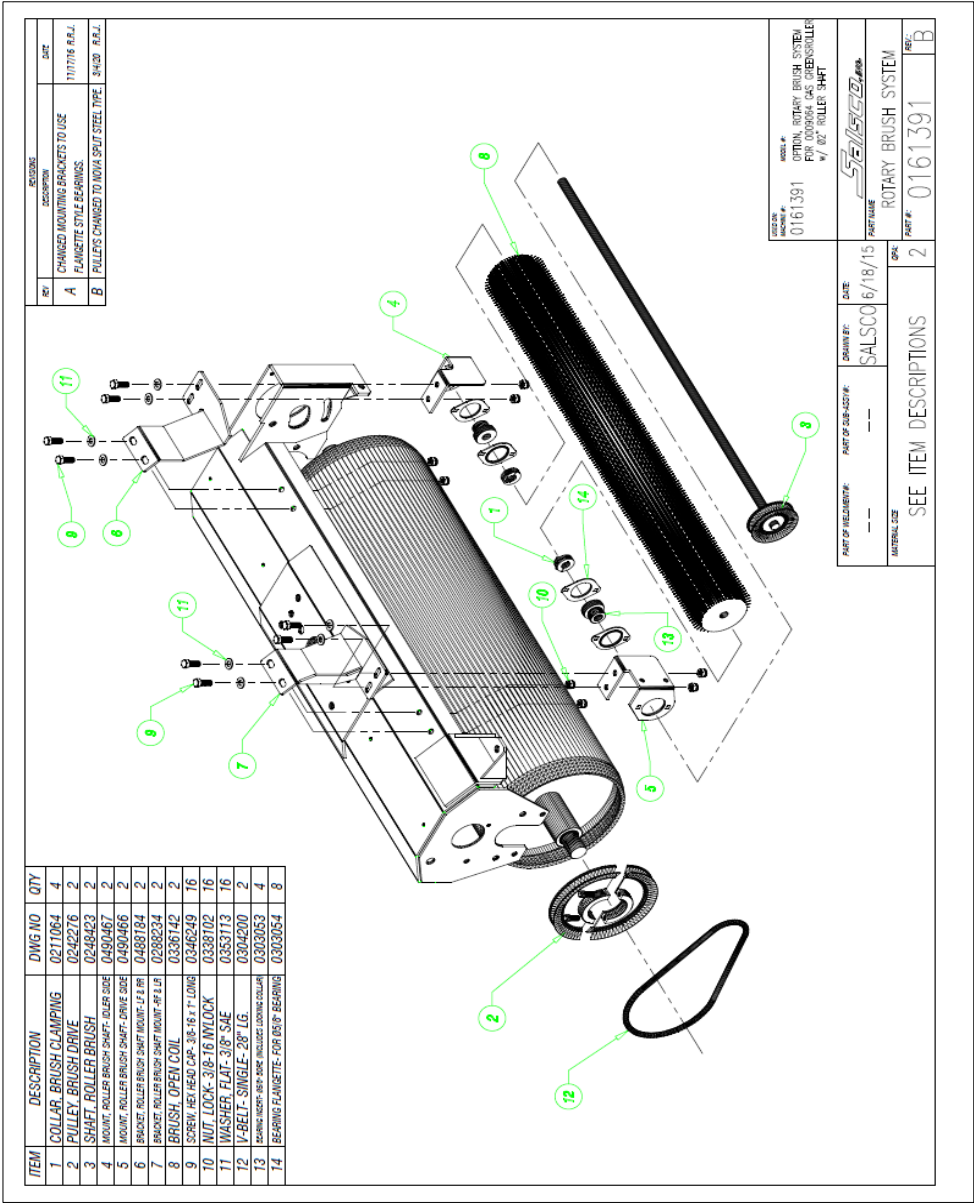
ITEM	DESCRIPTION	PART NO	QTY
1	GUIDE, TRAILER ROLL - LEFT	0222172	1
2	GUIDE, TRAILER ROLL - RIGHT	0222173	1
3	GUIDE, TAILGATE ROLL - RIGHT	0222173	1
4	GUIDE, TAILGATE ROLL - LEFT	0222172	1

~~ISSUED: 05-09-2012~~  
CORRECTION DATE: 05-03-2022



GAS GREENS ROLLER - DWG #14





**SALSCO, INC.**  
**HYDRAULIC MOTORS AND SEAL KITS FOR GREENS ROLLERS**

**IT IS IMPERATIVE THAT YOU KNOW WHAT BRAND OF MOTOR YOU HAVE WHEN  
ORDERING SEAL KITS**

<u>SALSCO P/N</u>	<u>DESCRIPTION</u>	<u>SEAL KIT P/N</u>
0330022-N (OBSOLETE)	CHARLYNN OR EATON	0330038-N
0330022-N (OBSOLETE)	RR-TCI-M&S, MLHP 125C5B	0330096-N
0330022-N (OBSOLETE)	SAUER DANFOSS 151-2084	0330138-N
0330139-N (CURRENT)	SAUER DANFOSS 151-2004	0330138-N

**(Hydraulic motor 0330139-N is factory installed on all Salsco Gas Rollers beginning with  
serial number 04032200090101589 JOB #1391)**

**\*\*\*Order fittings P/N 0317008-N & 0317250-N when replacing  
obsolete motors as listed above\*\*\***

**SALSCO, INC.**  
**HYDRAULIC PUMPS FOR GREENS ROLLERS**

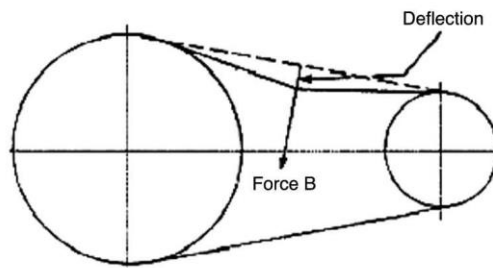
**\*\*\*Order fitting 0317064-N and hose 0327313-N when ordering pump 0330146-N on  
machines with SN's before 1589.\*\*\***

**(Hydraulic pump 0330146-N is factory installed on all Salsco Gas Rollers beginning with  
serial number 04032200090101589 JOB #1391)**

Below is a quick reference chart for various "Flat Head  
Cap Screws" and the torque recommendations.  
**VALUES ARE STATED IN FOOT POUNDS**

BOLT SIZE	Thds Per Inch	SAE Grade 5	SAE Grade 8
$\frac{1}{4}$	20	10	14
	28	---	---
5/16	18	19	29
	24	---	---
3/8	16	33	47
	24	---	---
7/16	14	54	78
	20	---	---
$\frac{1}{2}$	13	78	119
	20	---	---
9/16	12	114	169
	18	---	---
5/8	11	154	230
	11	---	---
$\frac{3}{4}$	10	257	380
	10	---	---
7/8	9	382	600
	9	---	---
1	8	587	700
	8	---	---

Drive Belt Tension Measurement by Deflection



Deflection should be 3/8" when  
8-12 lbs. push is applied at "B"

## **WARRANTY POLICY**

***Please remember to complete and return your Warranty Card and Dealer Delivery Report. Warranty Claims will not be considered if the Warranty Card and Dealer Delivery Report have not been returned to Salsco.***

Your Salsco Commercial or Turf Equipment product is a commercial-type product and is normally manufactured and sold for commercial or industrial use. **Salsco will, for the original purchaser, for (5) years from the date of purchase (90 days if used for rental purposes) repair or replace, free of charge, any part or parts found to be defective in material, workmanship or both.** Any transportation or shipping charges will be borne by the purchaser. If, during the warranty period stated above, the product does not function properly due to defect, simply contact Salsco and follow the Warranty Procedures included in this manual.

This warranty **does not** include:

- Incidental or consequential damages and is exclusive of any implied warranties.
- Normal maintenance parts, including, but not limited to hoses, chains, belts, filters, lubricants, etc.
- Parts or components, which are covered under the original manufacturer warranty, including, but not limited to engines, pumps, and motors.

## **WARRANTY PROCEDURE**

For warranty claims to be considered in a timely manner, please follow these simple procedures:

### **MACHINE OR PART FAILURE**

- a) Call our service department for helpful instruction on how to correct or repair the problem. Our service department may suggest preventive maintenance.
- b) When ordering parts for Warranty issues, you **MUST** retain possession of the old parts in question until notified with respect to returning the parts to Salsco or other disposition.
- c) Warranty Claims **MUST** be filed within 30-days from completion of the work performed. Contact our office for an electronic warranty claim form.
- d) Fill in all information requested on the warranty claim form, a copy of which is included in this manual, (date of purchase, company name, address, etc.). List all parts used. Make sure part numbers are correct. You can obtain these from your manual. (Include description of problem, i.e., "leaking from spool" rather than "leaking").
- e) It is our goal to consider and reach a disposition on each Warranty Claim within 30-days from the date the claim was submitted. Therefore, it is important that you respond promptly to any request for further information. Claims with no response to inquiries will be closed per **"denied for lack of response"** 90-days from the date of request.
- f) You may email or fax Warranty Claim form to our Warranty Department. **Warranty on parts most often requires return of the parts that were originally installed.**

#### **WARRANTY POLICY (cont'd)**

- g) DO NOT DISCARD OLD PARTS UNTIL YOU HAVE RECEIVED A DETERMINATION AS TO WHETHER THESE PARTS MUST BE RETURNED.
- h) Our Warranty Department will contact and instruct you on how to return the Parts to Salsco on an RA #. Returns MUST be made within 30-Days from issuance of RA #. **FREIGHT CHARGES ON RETURN OF PARTS IS THE RESPONSIBILITY OF THE CUSTOMER.** Normal pre-delivery adjustments are not covered under warranty. Labor Warranties are based on reasonable time allowances as determined by Salsco, Inc. and paid at 75% of posted labor rate. **TRAVEL TIME IS NOT REIMBURSED UNDER THE WARRANTY POLICY.**
- i) Be sure to put the RA form inside the box that you are shipping back, also be sure to put on the outside of the box "Return of Goods" and the RA #.
- j) Ship returns via a traceable method such as UPS Ground Service. Be sure that the shipment is insured for the appropriate value. If uninsured parts are lost, we cannot issue a credit.

**PLEASE NOTE:**    *Warranty forms should be filled out completely.*

**PREVENTIVE MAINTENANCE IS YOUR BEST INSURANCE AGAINST EQUIPMENT FAILURE. BE SURE TO READ THIS MANUAL, ESPECIALLY THE MAINTENANCE, OPERATING AND CAUTION SECTIONS.**

**SALSCO, INC., 105 Schoolhouse Rd.  
Cheshire, CT 06410  
800-872-5726, 203-271-1682  
203-271-2596 (Fax)  
[a.fowler@salsco.com](mailto:a.fowler@salsco.com); [www.salsco.com](http://www.salsco.com)**

<b>SALSCO, INC.</b> <b>105 SCHOOLHOUSE RD</b> <b>CHESHIRE, CT 06410</b>		<b>PHONE: 203-271-1682, 800-872-5726</b> <b>FAX: 203-271-2596</b> <b>EMAIL: a.fowler@salsco.com</b> <b>www.salsco.com</b>
END OWNER		PHONE:
NAME:		FAX:
EMAIL:		
ADDRESS:		
PURCHASED FROM:		PHONE:
NAME:		FAX:
EMAIL:		
ADDRESS:		
PURCHASE DATE:		INV #:
MODEL #:	SERIAL #	
HRS USED:		
IF YES, RA #:		
DATE FAILED:		
REPAIR DATE:		
PROBABLE CAUSE OF FAILURE:		

SALSCO WARRANTY CLAIM FORM – (cont'd)					
WORK PERFORMED/COMMENTS ON REPAIR:					
SHOP LABOR RATE:			SUBMITTED BY:		
TOTAL LABOR HRS TO REPAIR:			PRINTED NAME:		
PART #	DESCRIPTION	QTY	PRICE EACH	TOTAL	INVOICE #
FILL IN ALL INFORMATION REQUESTED ON WARRANTY CLAIM FORM. <b>INCOMPLETE FORMS CANNOT BE PROCESSED &amp; WILL BE RETURNED.</b> LIST ALL PARTS USED. MAKE SURE PART NUMBERS ARE CORRECT. ANY PARTS THAT YOU BELIEVE TO BE DEFECTIVE OR ANY PARTS THAT BREAK SHOULD BE RETAINED FOR POSSIBLE INSPECTION UNTIL AFTER THE WARRANTY HAS BEEN PAID OR PART HAS BEEN RETURNED. <b>INV. # NEEDS TO BE INCLUDED ON WARRANTY CLAIM.</b>					
<b>OFFICE USE ONLY</b>					
DATE REC'D:			DLR. DEL REPORT ON FILE:    YES    NO		
CUST ID:			WARRANTY CLAIM ON FILE:    YES    NO		
SALSCO WC:			PARTS TOTAL:		
SALSCO RA:			LABOR TOTAL:		
DATE APPROVED:			TOTAL APPROVED:		
DATE REJECTED:			REJECTED DATE:		
PROCESSED BY:			REASON:		

SALESMAN ID # \_\_\_\_\_

SALES MANAGER'S NAME \_\_\_\_\_

800-872-5726, 203-271-1682  
203-271-2596 (Fax)**SALSCO, INC.**  
105 School House Road  
Cheshire, CT 06410**www.salsco.com**  
sales@salsco.com**DEALER DELIVERY REPORT**

MODEL: _____		SERIAL NO: _____	
DEALER: _____	CITY: _____	STATE: _____	ZIP: _____
PURCHASER: _____	ADDRESS: _____	CITY: _____	ST: _____ ZIP: _____
The undersigned dealer warrants that the above-described machine was carefully inspected, adjusted and prepared for delivery before delivery to the purchaser; that both the operation and maintenance of the machine were explained to the purchaser; and that a copy of the Owner's Instruction Manual were given to the purchaser and his attention called to Our Warranty and any operating instructions included in the manual and caution notes.		The undersigned purchaser certifies that the operation and maintenance of the above-described machine have been explained to him; acknowledges receipt of a copy of the Owner's Instruction Manual and Our Warranty Policy printed in said Instruction Manual and Caution Notes. I also understand that it is my responsibility to explain and make Salsco manuals available to new operators.	
DATE: _____		DATE: _____ PURCHASER: _____	
SIGN BY: _____		SIGN BY: _____	
PHONE: _____ FAX: _____		PHONE: _____	
E-Mail: _____		EMAIL: _____	

MODEL: _____		SERIAL NO: _____	
<b><u>SALSCO LIMITED WARRANTY CARD</u></b>			
DATE PURCHASED: _____			
PURCHASER: _____	ADDRESS: _____	CITY: _____	ST: _____ ZIP: _____
EMAIL: _____		PHONE: _____	
DEALER: _____		STATE: CT	
Will this equipment be used commercially?		Yes <input type="checkbox"/>	No <input type="checkbox"/>
Did Dealer service this equipment and instruct you in its care and safe operation?		Yes <input type="checkbox"/>	No <input type="checkbox"/>
Did you receive an "Operation & Service Manual" and safety pamphlet?		Yes <input type="checkbox"/>	No <input type="checkbox"/>
Signed _____		Purchaser _____	
<b>NOTICE:</b> IMPORTANT: THIS CARD MUST BE FILLED OUT COMPLETELY AND MAILED TO THE FACTORY WITHIN 10 DAYS OF PURCHASE DATE, OR YOUR LIMITED WARRANTY WILL BE VOIDED.			



## SERVICE RECORD

If kept properly, this schedule will help track problems in the future.

[illegible]

MODEL # \_\_\_\_\_ S/N \_\_\_\_\_

DATE PURCHASED:\_\_\_\_\_