

**Quality of Workmanship  
Innovative Design  
Built to Last!**



## EGR, QC - 09074 Operators And Parts Manual



---

### MANUFACTURER OF OUTDOOR POWER EQUIPMENT

Products for Turf & Lawncare, Rental, Construction, Tree Care, Wood Processing, Nursery & Farm Industries

**3-1/2" - 18" Capacity, Gas, Diesel, & PTO Wood/Brush Chippers - Slab Chippers  
Gas, Electric & Tow Behind Rollers - Tranz-Former Roller - CRV Core Recovery Vehicle  
Mini-Paver - Mini-Track Paver - Cobra Curbers - Scorpion Router - Concrete Paver  
Chipper Shredder Vacuums - Tailgate & Truckloader Vacuums  
9 cu. yds. - 50 cu. yds. Per Hour, Electric, PTO & Diesel Powered Shaving Mills**



105 Schoolhouse Road  
Cheshire, CT 06410 U.S.A.  
800-872-5726 (Toll Free), 203-271-1682, 203-271-2596 (Fax)  
[www.salsco.com](http://www.salsco.com), [sales@salsco.com](mailto:sales@salsco.com)

## TABLE OF CONTENTS

### MODEL 0009074 – ELECTRIC GREENS ROLLER QC

COVER .....	Page 1
TABLE OF CONTENTS.....	Page 2
STATEMENT OF FACT .....	Page 3
MACHINE REGISTRATION .....	Page 4
SAFETY & OPERATING INSTRUCTIONS .....	Page 5
SERVICE & MAINTENANCE INSTRUCTIONS .....	Page 6
PARTS DIAGRAMS .....	Pages 7 – 26
WIRING DIAGRAMS .....	Pages 27 – 28
LED DIAGNOSTICS .....	Page 29
CONTROLLER TROUBLE SHOOTING CHART.....	Page 30
FAULT OUTPUT DRIVERS .....	Page 31
MAINTENANCE .....	Page 32
HOW TO INSTALL MOTOR & GEAR BOX.....	Page 33
TORQUE CHART.....	Page 34
WARRANTY POLICY/PROCEDURE .....	Page 35
COPY OF WARRANTY CLAIM FORM.....	Page 36 - 37
COPY OF DEALER DELIVERY REPORT & WARRANTY CARD.....	Pages 38
SERVICE SCHEDULE LOG .....	Page 39

SALSCO, INC.  
105 Schoolhouse Rd., Cheshire, CT 06410  
800-872-5726, 203-271-1682, 203-271-2596(Fax)  
sales@salsco.com, www.salsco.com

## **STATEMENT OF FACT**

You have just purchased the highest quality, most dependable, Greens Roller, on the market today. This unit has the ability to meet exact standards and perform for years with minimum downtime. HOWEVER, it cannot read nor will it understand this manual no matter how long you leave it on top of the machine.

**It is your responsibility** to read and understand this manual; it is also your responsibility to be certain this information is passed along to anyone who is expected to operate this equipment. Should you choose not to read, understand and pass along the information provided you, please expect equipment failure and possible injuries to persons around this equipment.

For the safety of the operator, it is **imperative** that this manual is carefully read and understood.

Once you have read this manual, it is your responsibility to be sure that all new operators read and understand this manual, especially all cautions stated.

As a manufacturer of equipment, we have a responsibility to design a safe piece of equipment. NOTE: The important safeguards and instructions in this manual are not meant to cover all possible conditions and situations that may occur. It must be understood that common sense, caution, and care are factors, which cannot be built into any product. These factors must be supplied by the person(s) caring for and operating this equipment.

**ONLY YOU CAN PREVENT ACCIDENTS!!**

## **MACHINE REGISTRATION**

MANUFACTURED BY: SALSCO, INC.  
105 Schoolhouse Rd., Cheshire, CT 06410  
800-872-5726, 203-271-1682, 203-271-2596 (Fax)  
[sales@salsco.com](mailto:sales@salsco.com) [www.salsco.com](http://www.salsco.com)

THIS MANUAL COVERS MODEL(s): \_\_\_\_\_, \_\_\_\_\_

This company reserves the right to discontinue, add improvements to, or change the design of any model or product at any time without obligation to improve existing machines, either by changing the design or adding new parts.

It has been and will continue to be the policy of SALSCO to update existing machines at its own discretion. Whenever possible, new designs will be made in such a way that they can be "Retro Fit" if so desired.

Record in the space provided below the model and serial number of this unit. Please retain these numbers for future reference.

**NO PARTS ORDERS** will be accepted **WITHOUT A SERIAL NUMBER, MODEL NUMBER AND PART NUMBERS.** All part numbers are listed in this manual.

\_\_\_\_\_  
Serial Number

\_\_\_\_\_  
Model Number

NOTE: Be sure to complete your warranty card. This will ensure immediate processing of any warranty claims.

**READ AND UNDERSTAND THIS MANUAL BEFORE STARTING THE  
MACHINE**

## **SAFETY INSTRUCTIONS**

1. **NEVER** leave unit running while unattended.
2. **NEVER** park on a green for any reason.
3. **NEVER** go down steep hills sideways. **ALWAYS** approach hills straight on.
4. **NEVER** change your mind mid-way down a steep incline. Once you've started down a steep incline, change direction only with the greatest of care and gentlest touch.

## **OPERATING INSTRUCTIONS**

1. Check that the unit has been serviced.
2. You should start unit from seated position. Just reach down to On/Off switch and turn unit on. Keep feet off pedals.
3. **REMEMBER: RIGHT PEDAL TO GO RIGHT, LEFT PEDAL TO GO LEFT.**
4. Once unit is running, push pedal down slowly. Unit will begin to move. Drive it out of trailer on to a grassy area.
5. Speed is controlled by pressure on the pedal.

### **HINTS:**

1. **KEEP BOTH FEET ON PEDALS AT ALL TIMES.** By keeping your heels planted and moving your toes to change direction, you have smooth control - left to right.
2. If you roll the same direction as green was mowed, it's easy to follow the lines. This helps a new operator do a fine job sooner.
3. To ensure longer life to your unit, when changing direction do so smoothly.
4. **REMEMBER TO TURN UNIT OFF BEFORE GETTING OFF.**

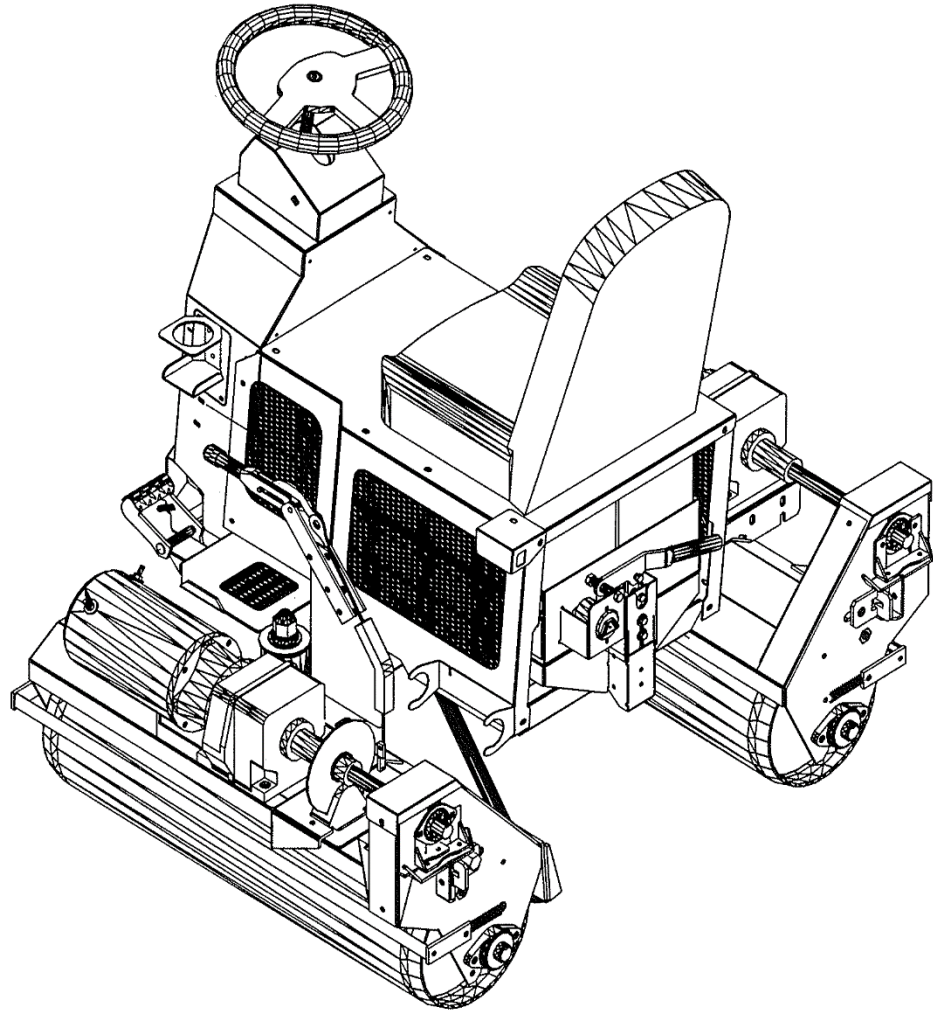
## **SERVICE & MAINTENANCE INSTRUCTIONS**

1. Check all grease fittings as listed below on a **WEEKLY** basis, and grease as necessary. (Add grease till grease leaks slightly from fitting.)
  - Bearings on roll housings - Quantity 4
  - Pivot bearing on main housing - Quantity 2
  - U-Joint on steering shaft - Quantity 1
2. After approximately **1 WEEK** of use, **and then every 2 WEEKS thereafter**, check drive chains. Adjust chain using the idler sprocket shown on drawing #6 page 14. Reference "How to Install Electric Motor, Gearbox, and Final Drive" page 33 items #16 & #17.
3. After approximately **1 WEEK** of use, **and then every 2 WEEKS thereafter**, check chains on steering. Adjust as needed.
4. Pivot for articulating steering should be tight, **with no play**, much the same as wheel bearings on cars.
5. **Keep unit clean.** Should rust form on rolls, simply drive the unit on a rough area till rolls are clean.
6. **Battery Maintenance/Charging. SEE MATERIALS/MANUAL PROVIDED BY TROJAN, ENCLOSED IN THE MANUAL PACKAGE YOU RECEIVED WITH THE ROLLER.**

SAFETY IS A PRIME CONCERN AT SALSCO AND THE SAFETY DECALS ON YOUR MACHINE ARE A HIGHLY VISIBLE AND CONSTANT REMINDER TO ALL OPERATORS. REPLACEMENT SAFETY DECALS MAY BE OBTAINED BY CALLING SALSCO @ 1-800-872-5726, OR THE DEALER IN YOUR AREA.

ITEM	DESCRIPTION	PART NO
	ELECTRIC GREENS ROLLER QC ASSY	0009074

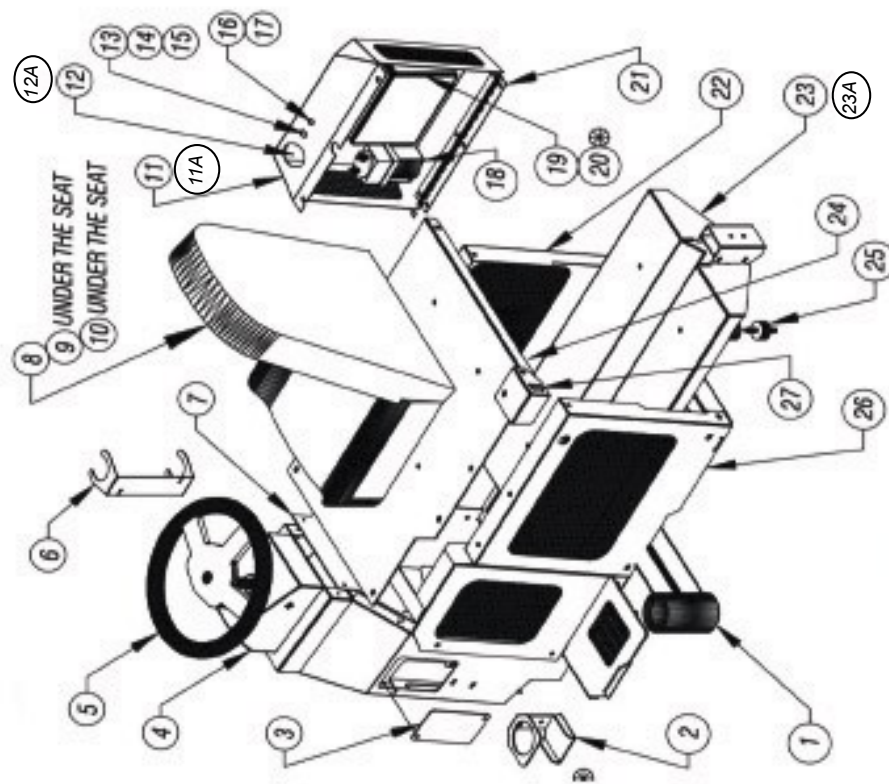
ISSUED: 03-25-2009



ELECTRIC GREENS ROLLER QC - DWG #1

ITEM	DESCRIPTION	PART NO	QTY
1	FRAME, BASE	0219446	1
2	CAN HOLDER	0481046	1
3	DOOR, FWD/REV SWITCH ACCESS	0460090	1
4	BOX, TILT WHEEL STEERING	0280052	1
5	STEERING WHEEL	0336052	1
6	HOLDER, MANUAL TUBE	0381057	1
7	COVER, STEERING COLUMN, REAR	0471373	1
8	SEAT ASSEMBLY	0347009	1
9	SEAT SWITCH	0315389	1
10	PAD, SEAT PRESSURE SENSOR	0489316	1
11	DOOR, CONTROL BOX (Lead Acid Battery Pack)	0260086	1
11A	DOOR, CONTROL BO (Lithium Battery Pack)	0260127	1
12	LEAD ACID BATTERY DISCHARGE GAUGE	0315135	1
12A	FUEL METER, LITHIUM BATTERY	0315477?	1
13	IGNITION SWITCH	0315135	1
14	IGNITION KEY	0315142	1
15	FLANGE NUT - IGNITION SWITCH	0315141	1
16	TOGGLE SWITCH, HEAD LIGHTS	0315143	1
17	BOOT FOR TOGGLE SWITCH	0315145	1
18	MAIN CONTACTOR COIL	0315172	1
19	CONTROLLER	0315282	1
20	WIRING HARNESS	0315387	1
21	HINGE, CONTROL BOX DOOR	0424042	1
22	PANEL, BATTERY BOX HOUSING-RIGHT	0286442	1
23	SHELF, BATTERY BOX SLIDE TRAY, (For Lead Acid Battery Pack)	0283068	1
23A	BOX, BATTERY (For Lithium Battery Pack)	0280089	1
24	PLATE, SEAT MONTING	0462757	1
25	MOUNT, RUBBER SANDWICH	0376250	4
26	PANEL, BATTERY BOX HOUSING-LEFT	0286440	1
27	BRACKET, LIGHT PLUG ATTACHMENT	0406991	1

ISSUED:	07-07-2009
	01-14-2011
	01-26-2021
	03-12-2021
	07-01-2023



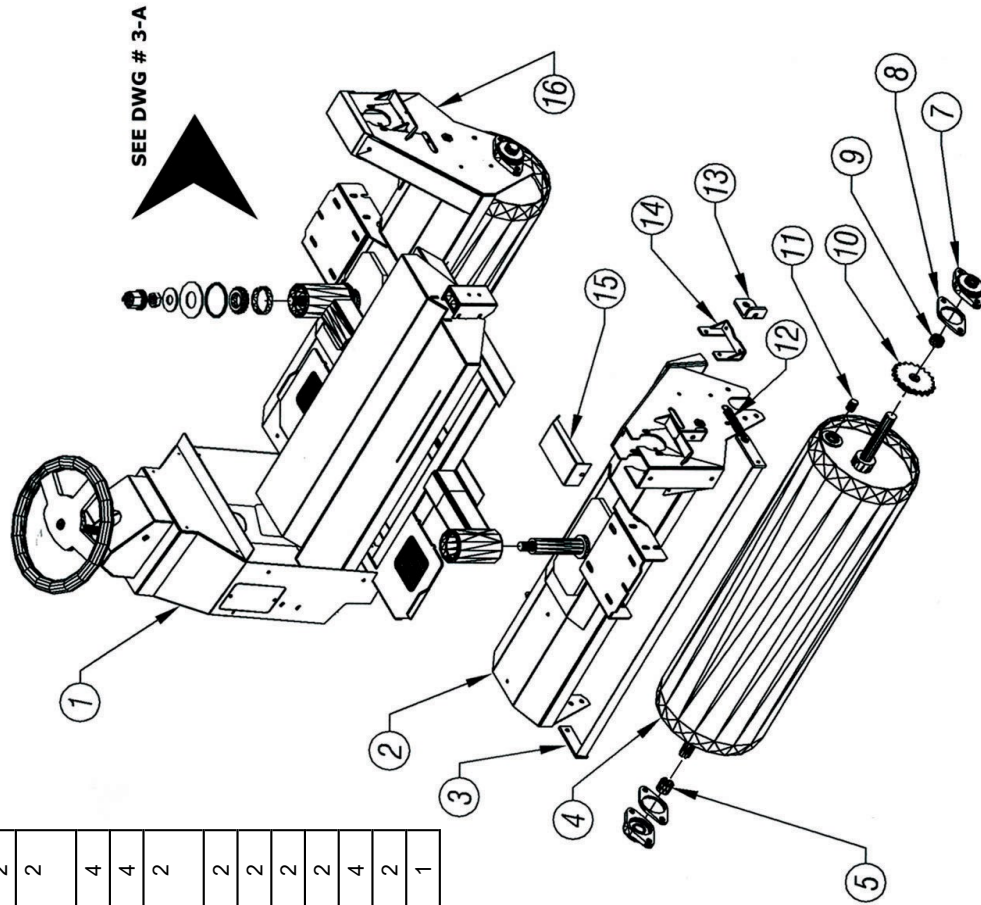
⊗ ITEM 19 - SEE WIRING DIAGRAM

ELECTRIC GREENS ROLLER DC - DWG #2



ITEM	DESCRIPTION	PART NO	QTY
1	BASE FRAME	0219446	1
2	HOUSING, ROLL - LEFT	0228281	1
3	SCRAPER, ROLL	0255154	2
4	SHAFT, ROLL	0248320	2
5	SPACER, STEEL - 1-1/2" OD X .12 WALL X 1.25	0449397	2
7	BEARING, 2-BOLT FLANGED	0303083	4
8	SPACER, 2-BOLT FLANGETTE BEARING	0449310	4
9	SPACER, STEEL 1-1/4" OD X .12 WALL X .550	0449271	2
10	SPROCKET, ROLLS, 2" ID	0451220	2
11	PLUG, PIPE (3/4-10)	0317072	2
12	SPRING, EXTENSION	0350033	2
13	ADJUSTER	0401032	2
14	BRACKET, PUSHER (Chain Tension)	0206448	4
15	COVER, ROLL HOUSING	0471241	2
16	HOUSING, ROLL - RIGHT	0228282	1

ISSUED:	05-18-2010
	05-02-2012
	03-12-2021
	07-01-2023



NOTE:

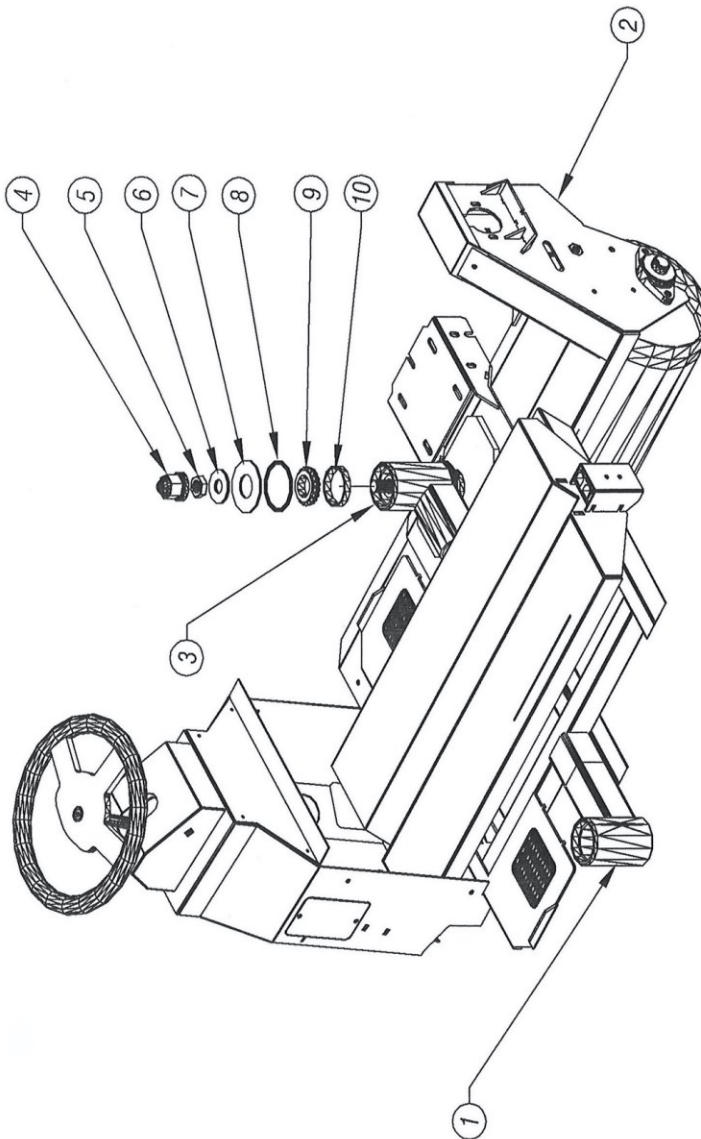
THIS DRAWING PERTAINS TO UNITS WITH S/N 0383 AND UP. FOR UNITS WITH S/N 0382 AND PREVIOUS, REFER TO THE MANUAL WITH THE REVISION DATE OF 10/6/2010

ELECTRIC GREENS ROLLER QC - DWG #3

~~ISSUED: 05-19-2010~~  
~~ISSUED: 05-02-2012~~  
~~ISSUED: 08-15-2012~~  
**CORRECTION DATE: 03-12-2021**

**0303089-N**  
**0303090-N**

ITEM	DESCRIPTION	PART NO	QTY	ITEM	DESCRIPTION	PART NO	QTY
1	BASE FRAME	0219446	1	6	FLAT WASHER	0353106	2
2	HOUSING, ROLL - RIGHT	0228282	1	7	WASHER	0453117	4
3	HOUSING, OSCILLATOR BEARING	0228164	1	8	O-RING	0343003	4
4	NUT CAP	0338405	2	9	CONE BEARING	0303015	4
5	JAM NUT	0338060	2	10	BEARING CUP	0303016	4



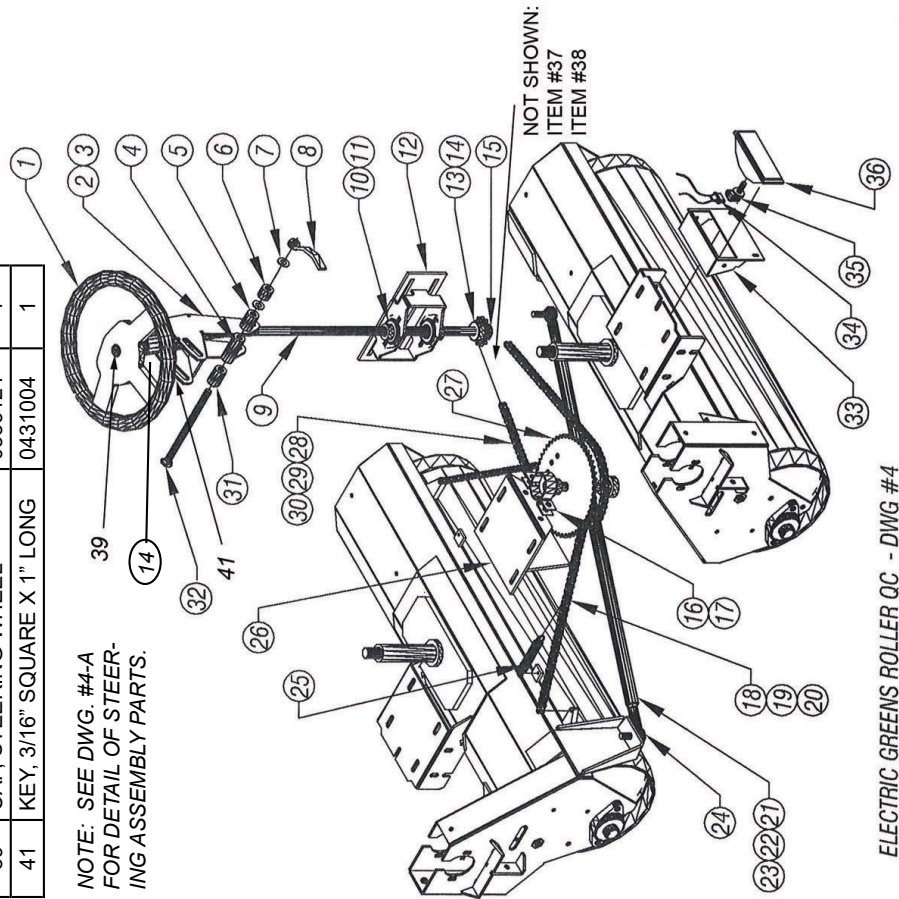
ELECTRIC GREENS ROLLER QC - DWG #3A

ITEM	DESCRIPTION	PART NO	QTY
1	STEERING WHEEL	0354142	1
2	ARM, TILT WHEEL STEERING PIVOT	0265113	1
3	BUSHING, OILITE	0307038	2
4	DOM TUBE - 1" OD X 1/4 WALL X 2.000" LONG		1
5	DOM TUBE - 1" OD X 1/4 WALL X 1.515" LONG		1
6	DOM TUBE - 1" OD X 1/4" WALL X .875" LONG		1
7	WASHER, FLAT - UHMW	0353333	2
8	EASY GRIP HANDLE - 1/2-13	0323142	1
9	FLEXIBLE SHAFT (Includes Pinion Universal Joint)	0248411	1
10	FLANGETTE, 2-BOLT	0303005	4
11	BEARING INSERT	0303023	2
12	BRACKET, SUPPORT STEERING SHAFT	0206982	1
13	SPROCKET, STEERING SHAFT	0351003	2
14	KEY - 3/16" SQUARE X 1" LONG	0431004	2
15	SET COLLAR, 3/4" ID	0311046	1
16	FLANGETTE, PILLOW BLOCK	0303024	2
17	BEARING INSERT 3/4" ID	0303023	2
18	ROLLER CHAIN, #50, 63 PITCH	0309051	1
19	MASTER LINK, #50	0309008	1
20	HALF LINK, #50	0309022	2
21	TIE ROD, STEERING	0245182	1
22	LOCK WASHER	0353015	2
23	JAM NUT	0338058	2
24	BALL JOINT ROD END, 1/2"-20 X 1/2"	0303017	2
25	SPRING, EXTENSION, STEERING CHAIN	0350009	2
26	BRACKET, STEERING SPROCKET	0206120	1
27	SPROCKETS, (2 ON SHAFT)	0251060	1
28	ROLLER CHAIN, #40, 79 PITCH (Steering Chain 1 of 1)	0309012	1
29	MASTER LINK, #40	0309006	1
30	HALF LINK, #40	0309019	1

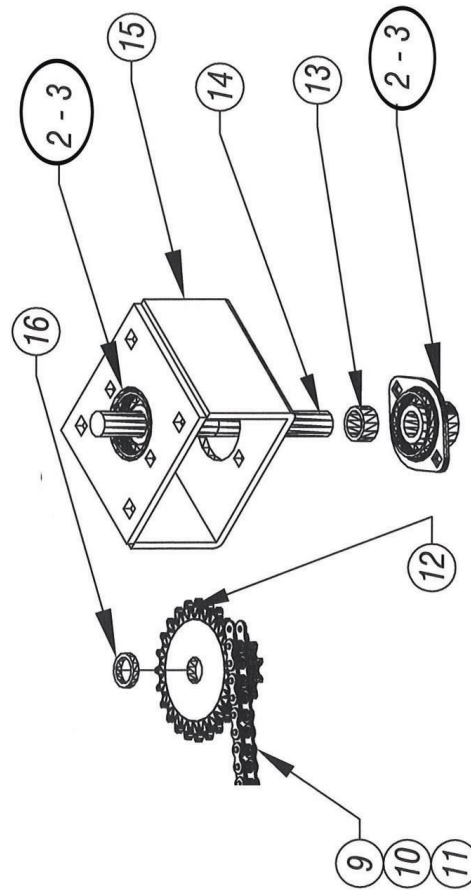
ISSUED:	03-25-2009
	03-24-2012
	01-11-2013
	03-12-2021
	07-01-2023

ITEM	DESCRIPTION	PART NO	QTY.
31	TUBE, HANDLE LEVER LOCKING	0467491	1
32	CARRIAGE BOLT	0346458	1
33	HEADLIGHT BOX	0280014	2
34	BULB PIGTAIL	0315137	2
35	HEADLIGHT BULB 90° (Bulb Only)	0315343	2
36	BULB COVER/LENS	0315136	2
37	SPROCKET, 40BS24 X 3/4" ID	0351187	1
38	ROLLER CHAIN, #40, 41 PITCH	0309086	1
39	CAP, STEERING WHEEL	0336124	1
41	KEY, 3/16" SQUARE X 1" LONG	0431004	1

NOTE: SEE DWG. #4-A  
FOR DETAIL OF STEERING ASSEMBLY PARTS.



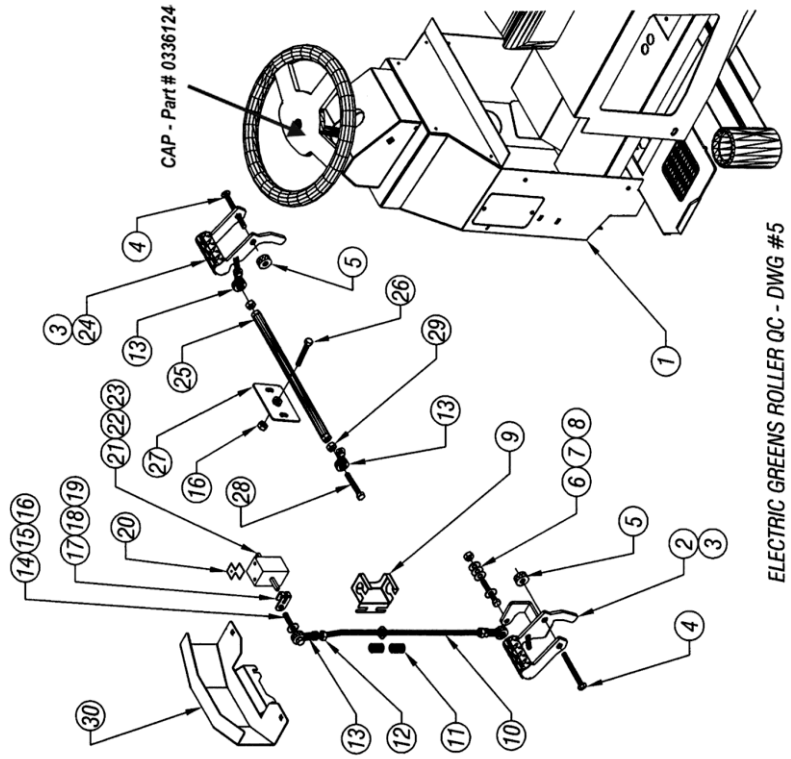
ITEM	DESCRIPTION	PART NO	QTY
2	BEARING INSERT	0303023	2
3	FLANGETTE	0303005	4
9	ROLLER CHAIN, #40 43 PITCH ("STEERING CHAIN 2 of 2" - See DWG. #4 for 1 of 2, Item #28)	0309089	1
10	MASTER LINK, #40	0309006	1
11	HALF LINK, #40	0309019	1
12	SPROCKET, STEERING REDUCTION	0251215	1
13	SPACER, DOM - 1" OD X .12 WALL X 1/2	0449401	1
14	SHAFT, CRS 3/4" OD X 4-5/8" LONG	0448466	1
15	BOX, STEERING REDUCTION	0280065	1
16	SPACER, DOM - 1" OD X .12 WALL X 3/16	STOCK	1



**ELECTRIC GREENS ROLLER - DWG #4-A**

ISSUED:	03-25-2009
	03-12-2024
	07-01-2023

ITEM	DESCRIPTION	PART NO	QTY
1	FRAME, BASE	0219446	1
2	PEDAL, FOOT - LEFT	0268032	1
3	BUSHING, FLANGED, BRONZE	0303020	4
4	PIN, FORWARD/REVERSE FOOT PEDAL	0240068	2
5	COLLAR SET	0311031	2
6	BOLT, HEX HEAD 3/8-16 X 2" LONG	0346207	1
7	WASHER, FLAT	0353102	5
8	LOCK NUT, NYLON INSERT	0338102	1
9	BRACKET, FORWARD/REVERSE SPRINGS	0206907	1
10	RON, THROTTLE	0245180	1
11	SPRINGS, COMPRESSION	0350031	2
12	JAM NUT, 3/8-24 FINE THREADS	0338018	2
13	BEARING, ROD END, BALL JOINT	0303019	4
14	BOLT, HEX HEAD 3/8-16 X 1-1/2" LONG	0346205	1
15	WASHER, FLAT	0353102	1
16	LOCK NUT, STOVER 3/8-16	0338152	2
19	LOCK NUT, NYLON INSERT	0338100	1
20	BASE SPACER, ELECTRIC THROTTLE	0484108	1
21	ELECTRONIC THROTTLE	0315328	1
22	SPLIT LOCK WASHER #10	0353009	2
23	SCREW, #10-32 X 3/8" LONG	0346812	2
24	PEDAL, FOOT - RIGHT	0268031	1
25	TUBE, F/R FOOT PEDAL CROSS	0267500	1
26	BOLT, HEX HEAD 3/8-16 X 2" LONG	0346252	1
27	BRACKET, FORWARD/REVERSE PIVOT	0206908	1
28	BOLT, HEX HEAD 3/8-16 X 2" LONG	0346252	1
29	JAM NUT, HEX HEAD 3/8-16	0338052	2
30	COVER, STEERING COLUMN BUMPER	0271375	1



ELECTRIC GREENS ROLLER QC - DWG #5

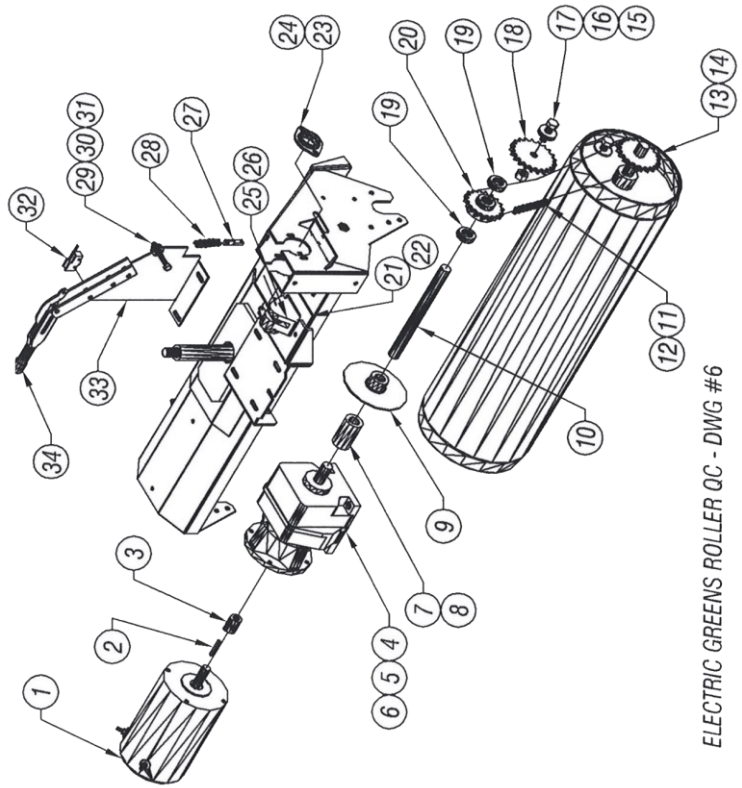


ITEM	DESCRIPTION	PART NO	QTY
1	MOTOR, ELECTRIC, DC	0337345	2
2	KEY, (6mm)	0431025	2
3	BUSHING, GEARBOX/MOTOR	0307037	2
4	GEARBOX (SEE NOTES)	0363018	2
5	GEARBOX SEAL - HIGH SPEED	0363015	2
6	GEARBOX SEAL - LOW SPEED	0363016	2
7	COUPLER, SPLIT	0313080	2
8	KEY, STEEL - 1/4" X 1/4" X 3" LONG	0431122	2
9	DISC & HUB	0329086	2
10	SHAFT, DRIVE	0448220	2
11	ROLLER CHAIN	0309090	2
12	MASTER LINK	0309008	2
13	SPROCKET, ROLLS, 2" ID TAPERED BORE	0451220	2
14	BUSHING	0351213	2
15	BOLT, HEX HEAD, 5/8-11 X 2" LONG	0346517	2
16	WASHER, FLAT 5/8" ID	0353110	6
17	LOCK NUT, 5/8-11	0338105	2
18	SPROCKET, IDLER	0351107	2
19	COLLAR, SINGLE SPLIT 1" ID	0311010	4
20	SPROCKET, DRIVE SHAFT	0351217	2
21	MOUNT, BRAKE CALIPER	0276544	1
22	PLATE, BRAKE CALIPER CLAMP	0462342	1
23	FLANGETTE	0366002	8
24	BEARING INSERT (1" ID)	0303007	4
25	DISCO CALIPER BRAKE ASSEMBLY	0336126	1
26	PUCK KIT, (REPLACEMENT)	0336128	1
27	BRAKE, CHAIN LINK	0434060	1
28	BRAKE CHAIN, 27 PITCH	0309078	1
29	BOLT, BRAKE CHAIN GUIDE	0346205	1
30	FLAT WASHER	0353111	2
31	JAM NUT	0338052	2
32	SNAP SWITCH - HAND BRAKE	0315072	1
33	BRACKET, EMERGENCY BRAKE LEVER	0406711	1
34	LEVER, PARKING BRAKE	0333004	1

**NOTES:**

ITEM #4 - MUST BUY 2 AS THEY NEED TO BE IDENTICAL.

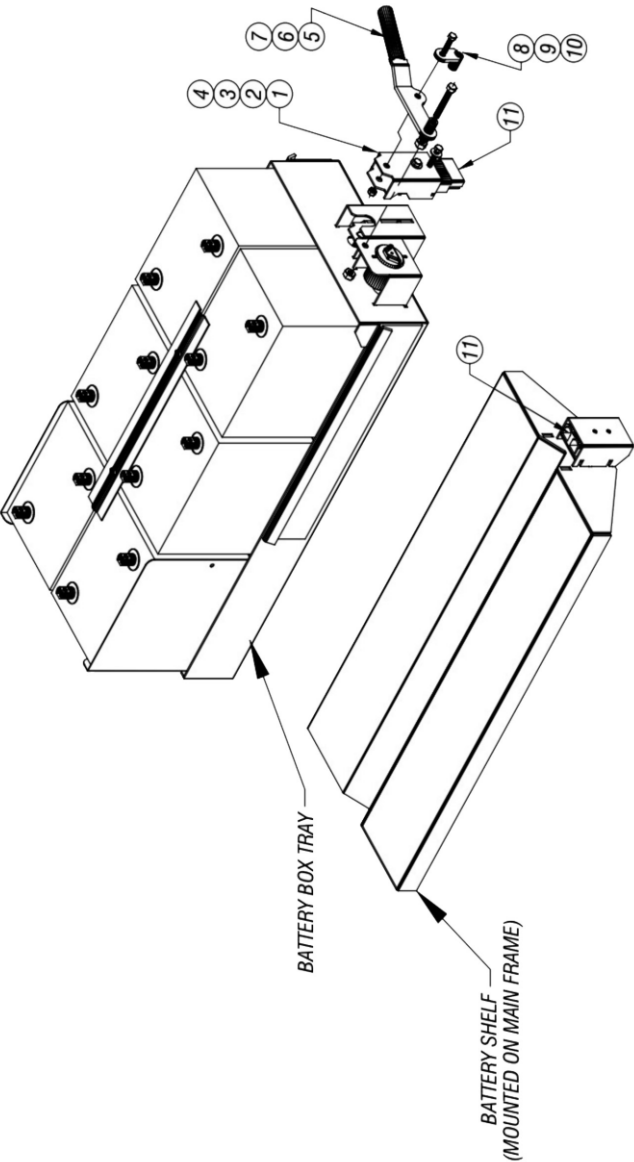
THIS DRAWING PERTAINS TO UNITS WITH S/N 0383 AND UP. FOR UNITS WITH S/N 0382 AND PREVIOUS, REFER TO THE MANUAL WITH THE REVISION DATE OF 10/6/2010.



ELECTRIC GREENS ROLLER QC - DWG #6

ITEM	DESCRIPTION	PART NO	QTY
1	BOX, ELECTRIC CONNECTOR SLIDE	0280055	1
2	BOLT, HEX HEAD	0346106	2
3	FLAT WASHER	0353101	2
4	LOCK NUT	0346106	2
5	LEVER, BATTERY BOX RELEASE	0233227	1
6	BOLT, HEX HEAD	0346127	1
7	LOCK NUT	0338101	1
8	LINK, BATTERY BOX LEVER	0234068	1
9	BOLT, HEX HEAD	0346106	1
10	LOCK NUT	0338101	1
11	BATTERY CONNECTORS	0315376	2

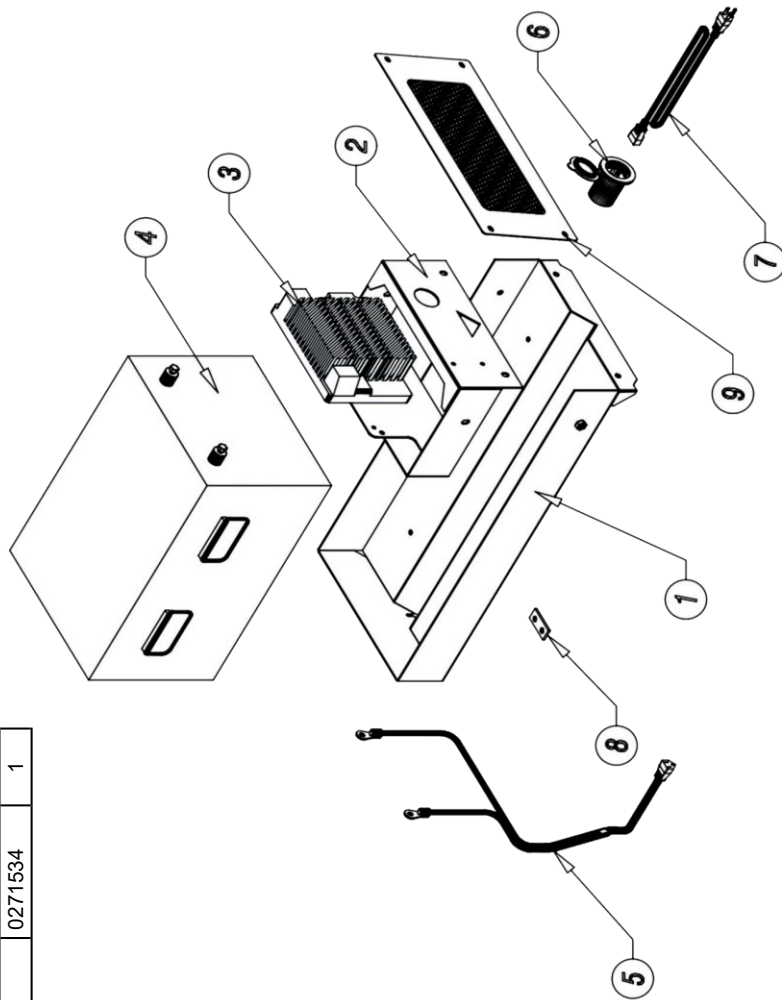
ISSUED:	03-25-2009
	05-02-2012
	01-20-2021
	07-01-2023



ELECTRIC GREENS ROLLER QC - DWG #7  
(THESE ITEMS USED ONLY WITH LEAD ACID BATTERY PACK)

ITEM	DESCRIPTION	PART NO	QTY
1	BOX, BATTERY	0280089	1
2	MOUNT, BATTERY CHARGER	0291183	1
3	BATTERY CHARGER - 36V LITHIUM	0315475	1
4	BATTERY - 36V LITHIUM	0315474	1
5	DC CORD WITH RING TERMINALS	0315477	1
6	AC PORT PLUG	0314478	1
7	AC POWER CORD	0315476	1
8	LINK, BUSS BAR	0434092	1
9	COVER, BATTERY ACCESS - REAR	0271534	1

ISSUED:	03-28-2023
	07-01-2023



ELECTRIC GREENS ROLLER QC - DWG #7A  
(THESE ITEMS USED ONLY w/ LITHIUM BATTERY PACK) OPTION #0161428



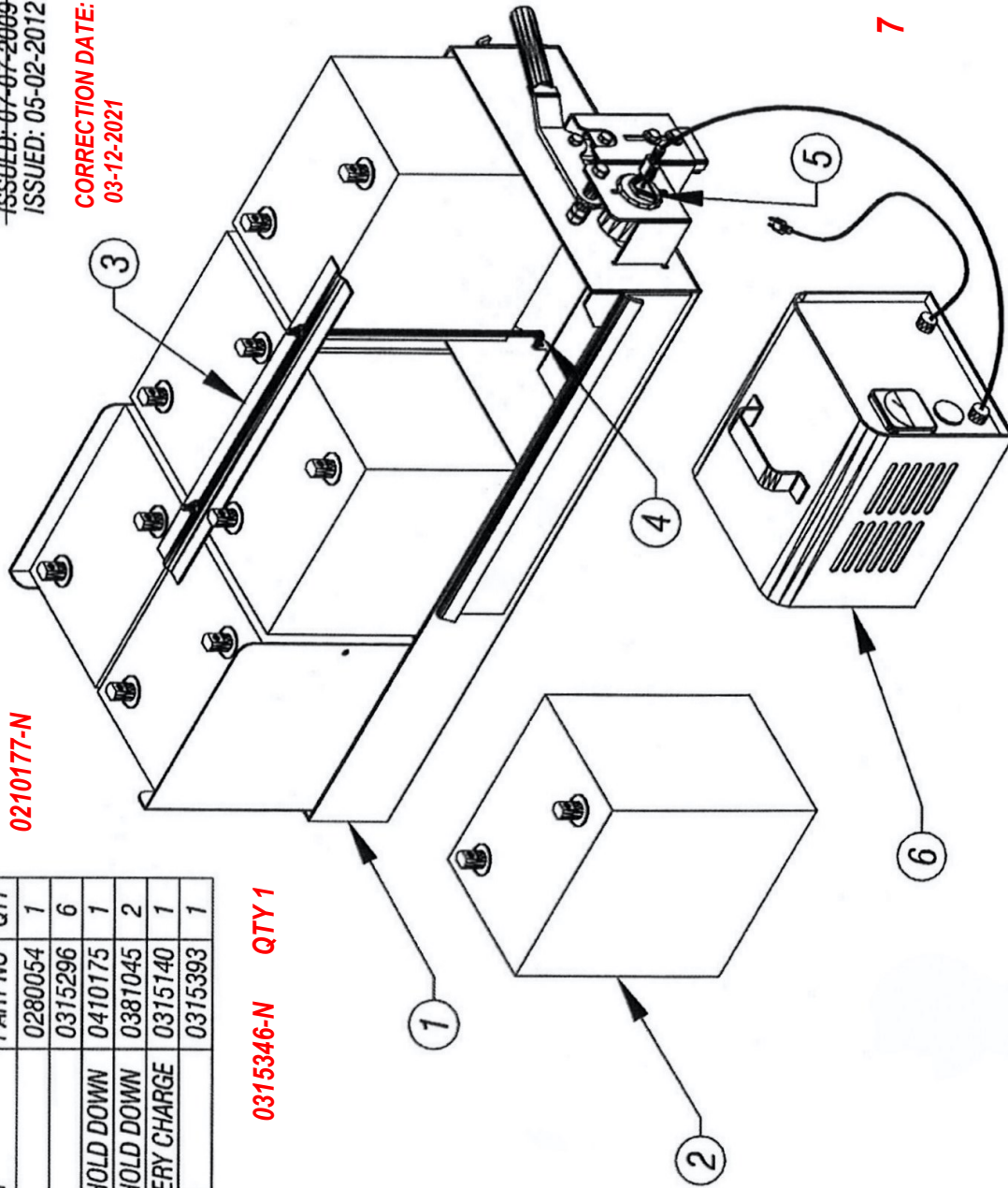
ITEM	DESCRIPTION	PART NO	QTY
1	BATTERY TRAY	0280054	1
2	BATTERY, 6 VOLT	0315296	6
3	CLAMP, BATTERY HOLD DOWN	0410175	1
4	J-HOOK, BATTERY HOLD DOWN	0381045	2
5	RECEPTACLE, BATTERY CHARGE	0315140	1
6	BATTERY CHARGER	0315393	1

0210177-N

ISSUED: 07-07-2009  
ISSUED: 05-02-2012

CORRECTION DATE:  
03-12-2021

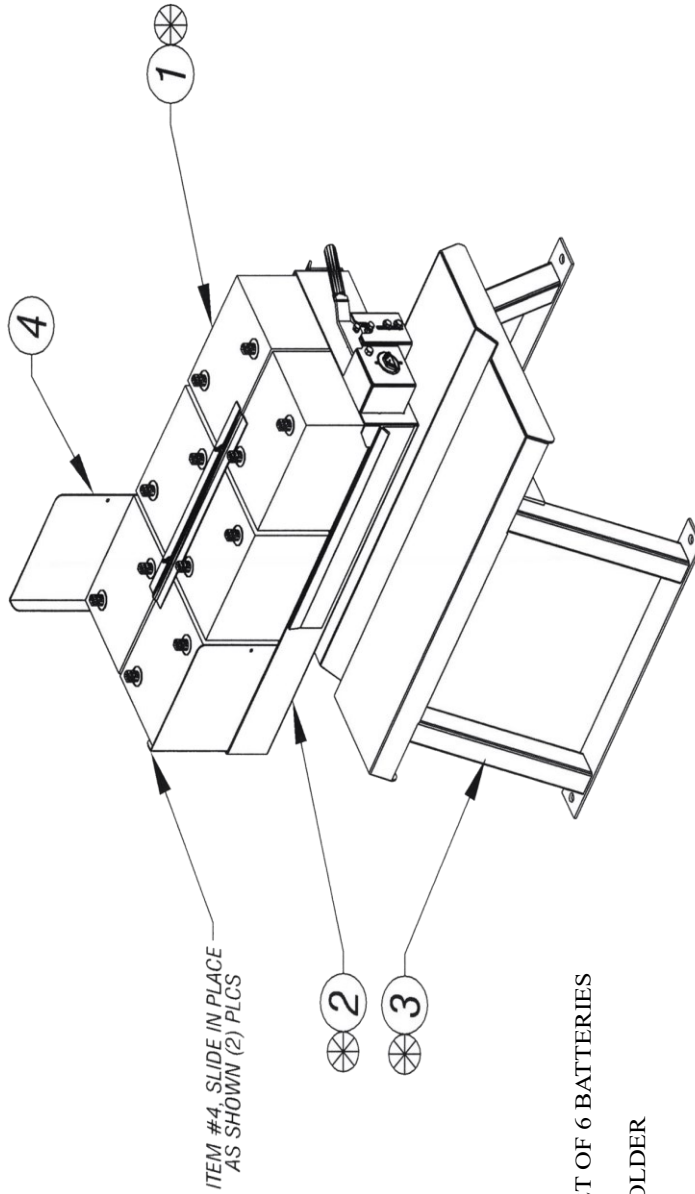
ITEM 7 – CORD ONLY 0315346-N QTY 1



ELECTRIC GREENS ROLLER QC - DWG #8

ITEM	DESCRIPTION	PART NO	QTY
1	BATTERY, 6 VOLT	0315296	6
2	BATTERY TRAY	0280054	1
3	BATTERY STORAGE RACK	0261308	1
4	COVER, G/R BATTERY	0471445	2

ISSUED:	03-25-2009
	05-02-2012
	07-01-2023



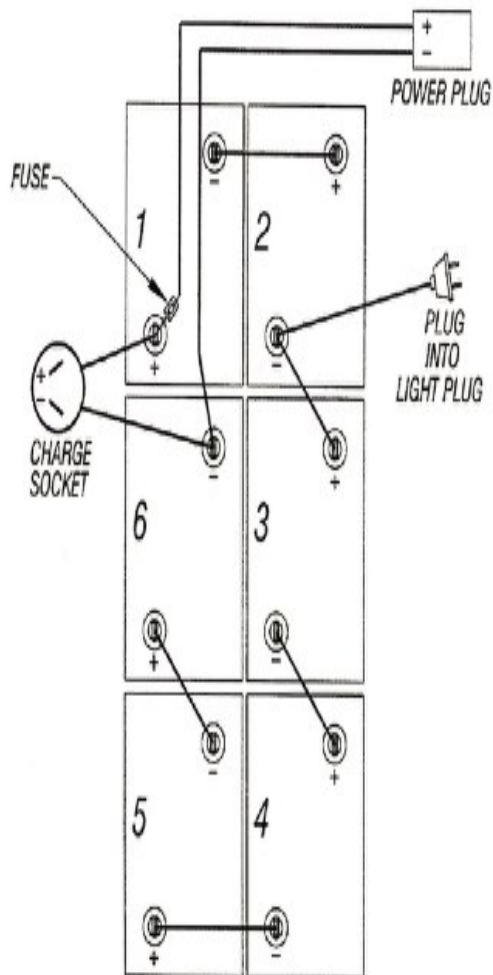
- OPTIONAL ACCESSORIES:
- ITEM #1 - BATTERY PACK, SET OF 6 BATTERIES
  - ITEM #2 - BATTERY TRAY
  - ITEM #3 - BATTERY TRAY HOLDER

OPTIONAL ITEMS  
ELECTRIC GREENS ROLLER QC - DWG #9



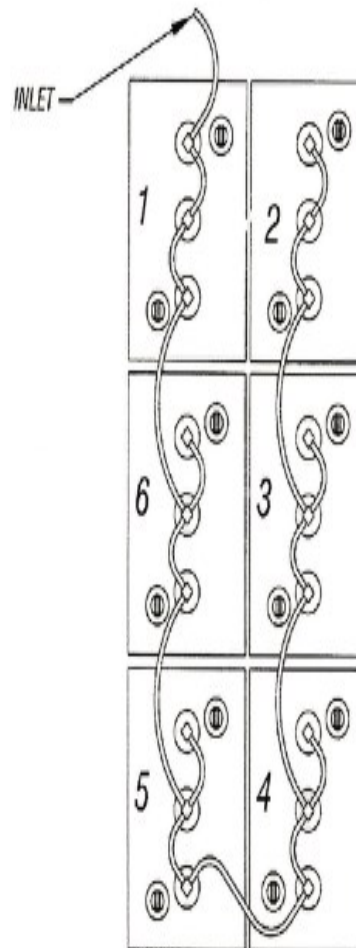
ISSUED: 03-23-2010

## BATTERY CABLES



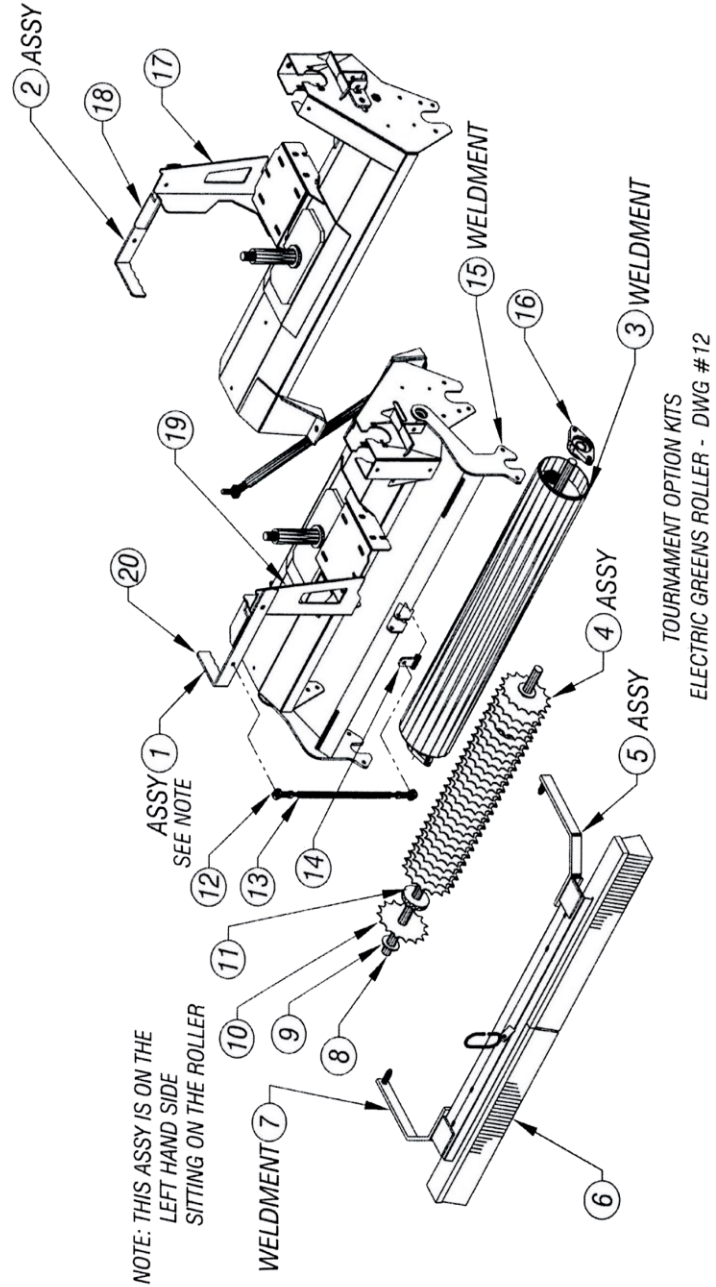
## BATTERY FILL SYSTEM

P/N 0315378 - FLEXIBLE MANIFOLD (RUBBER TUBING & CAPS)



BATTERY CABLES HOOK-UP & BATTERY FILL SYSTEM  
ELECTRIC GREENS ROLLER QC - DWG #11

ITEM	DESCRIPTION	PART NO	QTY	ITEM	DESCRIPTION	PART NO	QTY
1	KIT - ATTACHMENT FRAME, LEFT	0161237	1	11	SPACER, SPIKE-AIR BLADES	0449207	64
2	KIT - ATTACHMENT FRAME, RIGHT	0161238	1	12	BEARING, ROD END	0303019	2
3	SHAFT, TOURNAMENT ROLL	0248229	1	13	ROD, ARM LIFTING	0245158	1
4	SPIKE-AIR ASSEMBLY	0161225	1	14	BRACKET, LIFTING ARM SWIVEL	0206783	1
5	BRUSH ASSEMBLY	0161395	1	15	ARM, TOURNAMENT ROLL & SPIKE-AIR	0265102	1
6	BRUSHES	0336060	2	16	BEARING, 2-BOLT FLANGE	0303006	2
7	FRAME, BRUSH KIT	0219542	1	17	BRACKET, TOURNAMENT ROLL & SPIKE-AIR, RIGHT	0406710	1
8	SHAFT, CRS ROD - 1" DIA. X 39" LONG	0448226	1	18	LEVER, RIGHT	0433179	1
9	WASHER, FLAT USS - 1"ID	0353150	2	19	BRACKET, TOURNAMENT ROLL & SPIKE AIR, LEFT	0406801	1
10	BLADE, SPIKE-AIR	0405113	32	20	LEVER, LEFT	0433176	1



ISSUED:	09-16-2009
	08-16-2010
	07-01-2023



REV	DESCRIPTION	DATE
A	CHANGED MOUNTING BRACKETS TO USE FLANGETTE STYLE BEARINGS.	11/18/18 RAL
B	PULLEYS CHANGED TO NOVA BRUSH STEEL TYPE. SAE 316.	

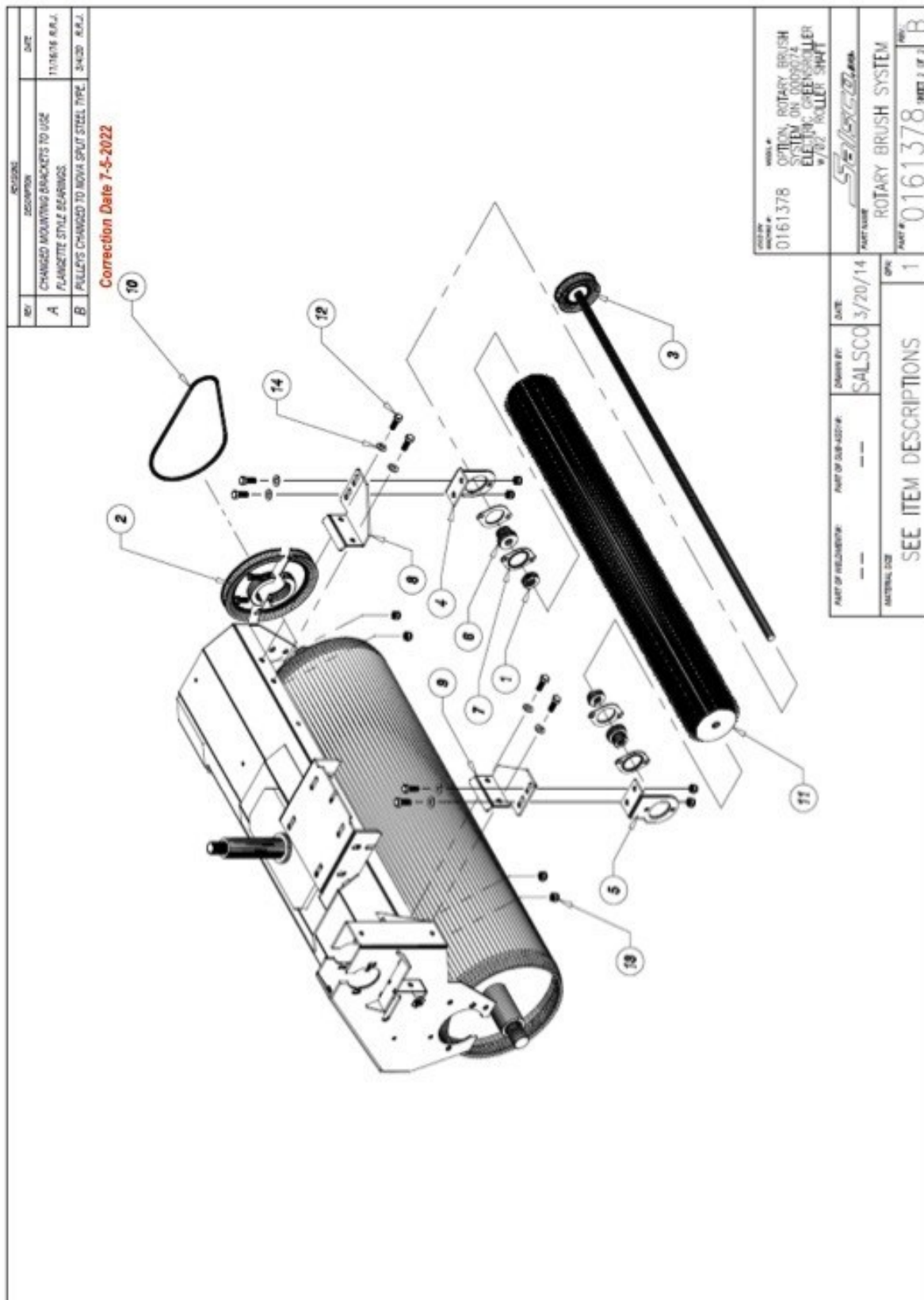
Correction Date 7-5-2022

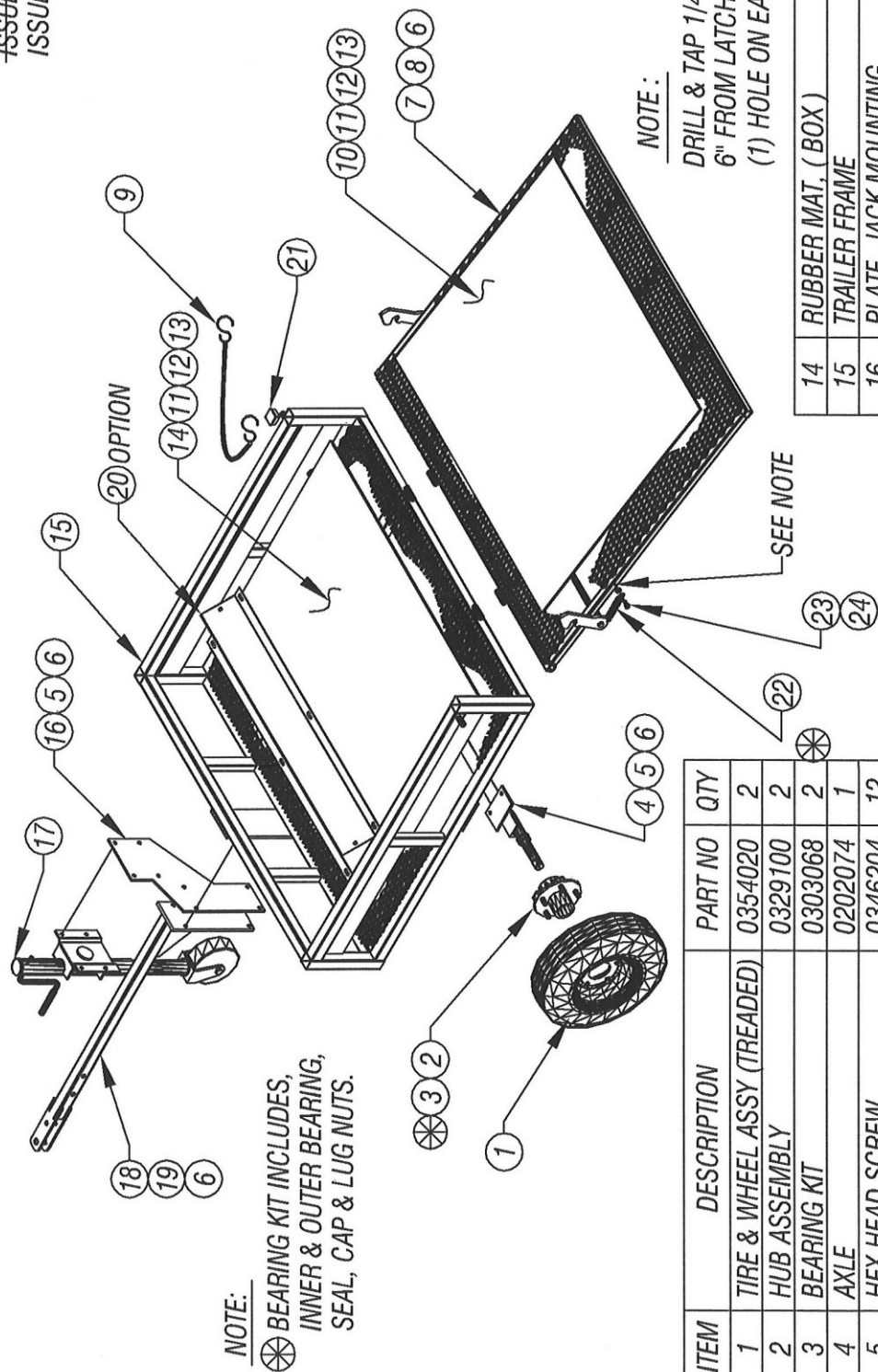
ITEM	DESCRIPTION	DWG NO	QTY
1	COLLAR, BRUSH CLAMPING	0211064	4
2	PULLEY, BRUSH DRIVE	0242268	2
3	SHAFT, ROLLER BRUSH	0248424	2
4	MOUNT, ROLLER BRUSH SHAFT DRIVE-A	0480329	2
5	MOUNT, ROLLER BRUSH SHAFT DRIVE-B	0490331	2
6	BEARING, ROLLER BRUSH SHAFT DRIVE-A	0303053	4
7	BEARING, ROLLER BRUSH SHAFT DRIVE-B	0303054	8
8	BRACKET, ROLLER BRUSH SHAFT MOUNT-A	0488195	2
9	BRACKET, ROLLER BRUSH SHAFT MOUNT-B	0488196	2
10	V-BELT- SINGLE- 28" LG.	*0304200	2
11	BRUSH, OPEN COIL	0336142	2
12	SCREW, HEX HEAD CAP, 3/8-16 x 1" LONG	0346249	16
13	NUT, LOCK- 3/8-16 NYLOCK	0338102	16
14	WASHER, FLAT- 3/8" SAE	0353113	16

\*ITEMS & QUANTITIES SHOWN ARE FOR ROLLS ON BOTH SIDES.

\* NOTE: Belt 0304200-N is factory-installed during production. Replacement orders: Continuous belt 0304200-N requires roll to be dropped for installation. Adjustable V-twist belt 0404195-N does not require roll to be dropped but may require link adjustments to maintain proper tension.

PART OF PRELIMINARY		DATE	DESIGNED BY	DATE
		3/20/14	SALSCO	3/20/14
PART OF SUB-ASSEMBLY		PART NAME		
		ROTARY BRUSH SYSTEM		
DRAWING NO.		REV		
0161378		0161378		
OPTIONAL ROTARY BRUSH SYSTEM ON 0009074 ELECTRIC OPERATOR 1/2" ROLLER SHAFT				
SHEET 1 OF 2				





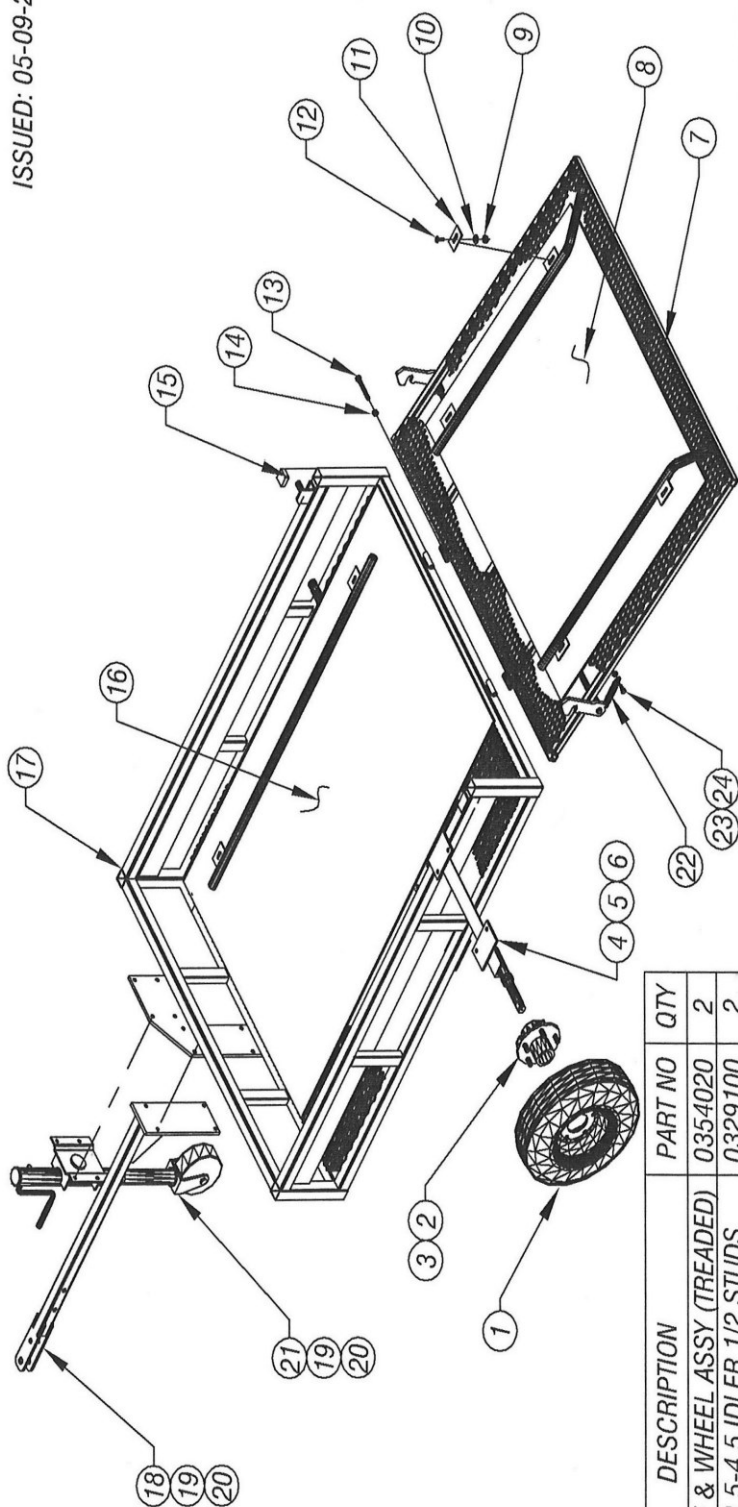
ITEM	DESCRIPTION	PART NO	QTY
1	TIRE & WHEEL ASSY (TREADED)	0354020	2
2	HUB ASSEMBLY	0329100	2
3	BEARING KIT	0303068	2
4	AXLE	0202074	1
5	HEX HEAD SCREW	0346204	12
6	LOCK NUT	0338102	18
7	TAIL GATE	0219371	1
8	HEX SCREW	0346217	2
9	BUNGEE CORD	0308013	1
10	RUBBER MAT, ( TAILGATE )	0356043	1
11	CARRIAGE BOLT	0346129	8
12	LOCK WASHER	0353002	8
13	HEX NUT	0338002	8

TRANSPORT TRAILER ASSY  
0009076

ELECTRIC GREENS ROLLER QC  
DWG #13

14	RUBBER MAT, ( BOX )	0356040	1
15	TRAILER FRAME	0219313	1
16	PLATE, JACK MOUNTING	0462410	1
17	JACK, SWIVEL- WITH CASTER	0369047	1
18	TONGUE	0225011	1
19	HEX HEAD SCREW	0346205	4
20	STOP, ROLLER MOVEMENT	0482066	1
21	CAP (PLASTIC)	0371001	4
22	SPRING, EXTENSION	0350009	2
23	BOLT, HEX HD -1/4 -20x1 1/4 LG	0346072	2
24	JAM NUT - 1/4 - 20	0338039	2





ITEM	DESCRIPTION	PART NO	QTY
1	TIRE & WHEEL ASSY (TREADED)	0354020	2
2	HUB 5-4.5 IDLER 1/2 STUDS	0329100	2
3	5 LUG KIT & NUTS	0303068	2
4	AXLE	0202110	1
5	HEX HEAD SCREW	0346204	12
6	LOCK NUT	0338102	12
7	TAIL GATE	0219492	1
8	RUBBER MAT, (TAILGATE) 43x48	0356043	1
9	LOCK NUT, (NYLON INSERT)	0338101	12
10	FLAT WASHER	0353101	12
11	PLATE, HOLD DOWN GUIDES	0462585	8
12	CARRIAGE BOLT	0346130	12
13	HEX SCREW	0346217	2

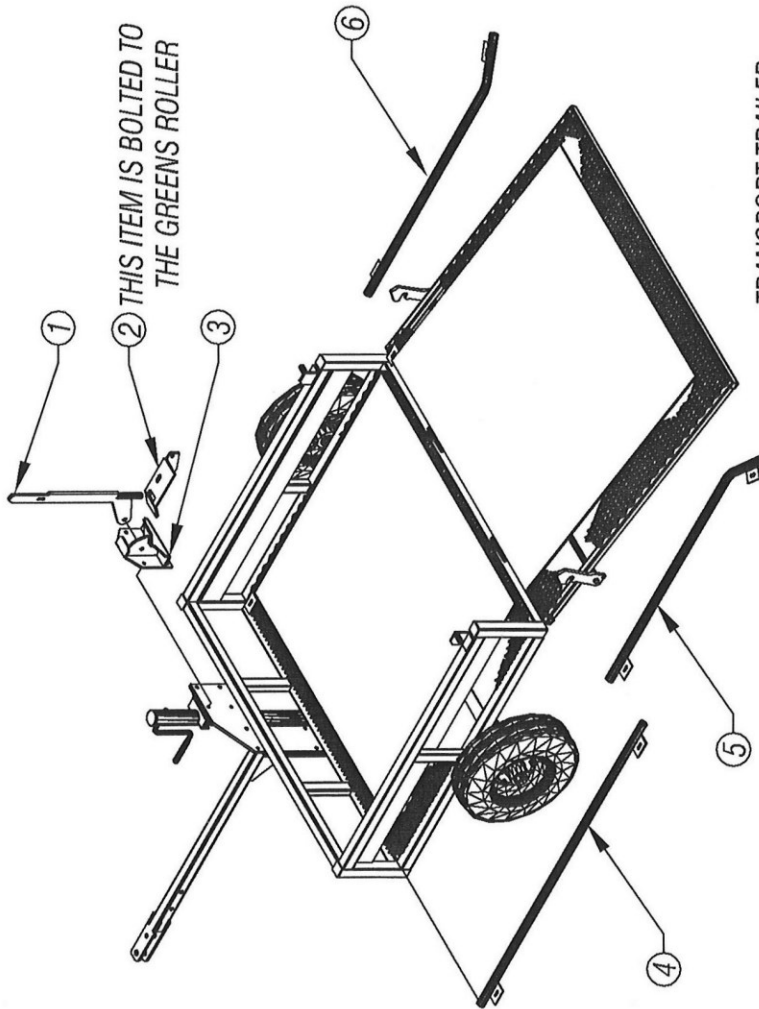
14	HEX NUT	0338012	2
15	CAP (PLASTIC)	0371001	4
16	RUBBER MAT, (TRAILER) 43x61	0356040	1
17	TRAILER FRAME	0219447	1
18	TONGUE	0225011	1
19	HEX HEAD SCREW	0346204	8
20	LOCK NUT, (NYLON INSERT)	0338102	8
21	JACK, SWIVEL- WITH CASTER	0369047	1
22	SPRING, EXTENSION	0350009	2
23	BOLT, HEX HD -1/4 -20x1 1/4 LG	0346072	2
24	JAM NUT - 1/4 - 20	0338039	2

0009076 TRAILER ASSY  
FOR  
QC ELECTRIC GREENS ROLLER

ELECTRIC GREENS ROLLER  
DWG #17

### LATCH & LOCK

ITEM	DESCRIPTION	PART NO	QTY
1	LEVER, TRANSPORT LATCH	0233224	1
2	PLATE, TRANSPORT LATCH	0462583	1
3	LATCH, TRANSPORT	0233226	1



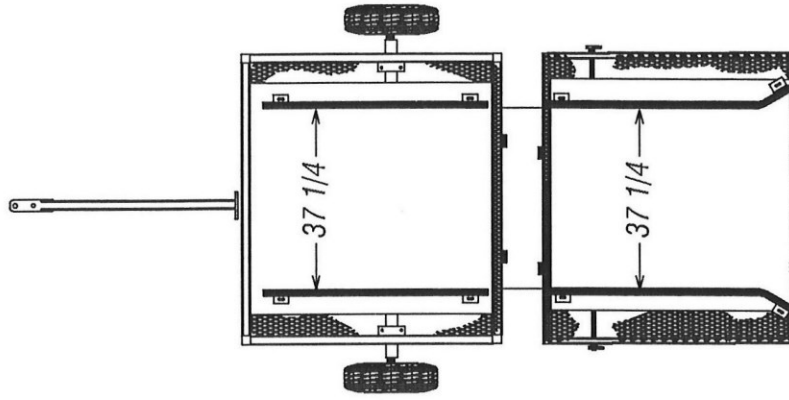
TRANSPORT TRAILER  
FOR  
QC ELECTRIC GREENS ROLLER

ELECTRIC GREENS ROLLER

DWG #18

### LOAD & GO

ITEM	DESCRIPTION	PART NO	QTY
4	GUIDE, TRAILER ROLL	0222171	2
5	GUIDE, TAILGATE ROLL - LEFT	0222172	1
6	GUIDE, TAILGATE ROLL - RIGHT	0222173	1

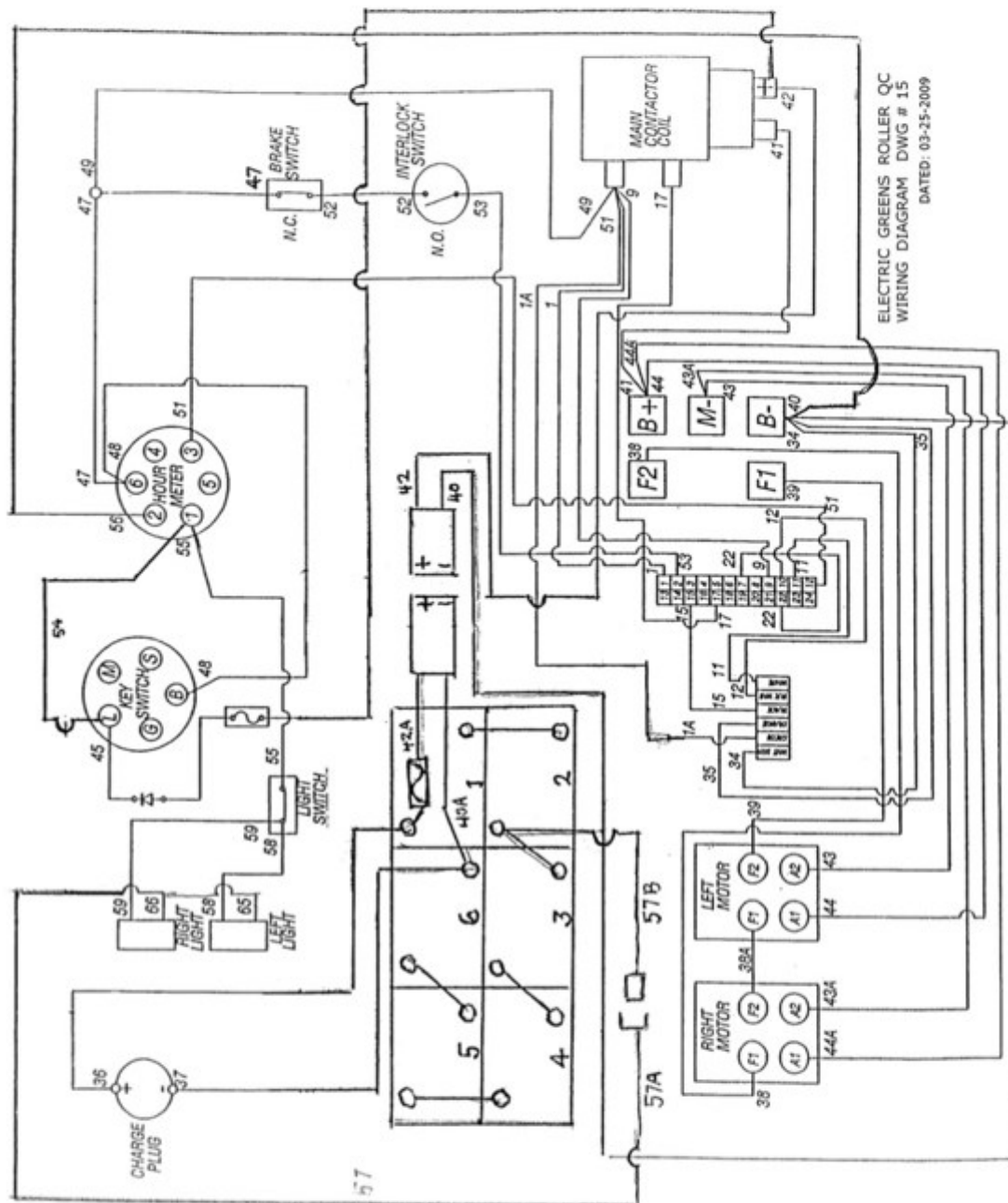


TOP VIEW  
LOCATION OF  
ROLLER GUIDES

DATED: 03-25-2009

ITEM	LOCATION	COLOR	GA.	LG.	TERMINALS
44	CONT. (B+) TO MOTOR (L) A1	RED	4	61	5/16" T/L - E/E
44A	CONT. (B+) TO MOTOR (R) A1	RED	4	43	5/16" T/L - E/E
43	CONT. (M-) TO MOTOR (L) A2	BLK	4	59	5/16" T/L - E/E
43A	CONT. (M-) TO MOTOR (R) A2	BLK	4	41	5/16" T/L - E/E
41	MCC TO CONT. (B+)	RED	4	17	5/16" T/L - 3/8" T/L
42	MCC TO BATT POWER PLUG	RED	4	40 1/2	3/8" T/L - O/E
40	CONT. (B-) TO POWER PLUG (-)	BLK	4	46	5/16" T/L - O/E
40A	POWER PLUG TO BATTERY #6 (-)	BLK	4	25	Q.D. LUG - 5/16 T/L
42A	POWER PLUG TO BATTERY #1 (+)	RED	4	20	Q.D. LUG - 5/16 T/L
60	BATTERY #1(-) TO BATTERY #2 (+)	RED	4	6 1/2	5/16" T/L - E/E
61	BATTERY #2(-) TO BATTERY #3 (+)	RED	4	6	5/16" T/L - E/E
62	BATTERY #3(-) TO BATTERY #4 (+)	RED	4	6	5/16" T/L - E/E
63	BATTERY #4(-) TO BATTERY #5 (+)	RED	4	6 1/2	5/16" T/L - E/E
64	BATTERY #5(-) TO BATTERY #6 (+)	RED	4	6	5/16" T/L - E/E
38	CONT. (F2) TO MOTOR (R) (F1)	RED	10	43	1/4" R/T - E/E
38A	MOTOR (R) (F2) TO MOTOR (L) (F1)	RED	10	40	1/4" R/T - E/E
39	CONT. (F1) TO MOTOR (L) (F2)	BLK	10	55	1/4" R/T - E/E
36	CHG. PLUG TO POWER FUSE	RED	10	18 1/2	B/S - #10 R/T
37	CHG. PLUG TO BATT. #6 (-)	BLK	10	26	B/S - #10 R/T
34	6 PIN WHT/BRN TO CONT. (B-)	WHT	20	74	9 PIN - 5/16" R/T
35	6 PIN ORANGE TO CONT. (B-)	WHT	20	74	9 PIN - 5/16" R/T
65	BATTERY B/S#57 (-) TO LIGHT (L) (-)	BLK	14	41	5/16" R/T - O/E
66	BATTERY B/S#57 (-) TO LIGHT (R) (-)	BLK	14	6 1/2	5/16" R/T - O/E
57	QUICK DISCONNECT TO B/S #S 65 & 66	BLK	12	71	1/4 Q.D.x B/S
57A	#57 QUICK DISCONNECT	BLK	10	12	3 PR SOCKET x Q.D.
57B	#57A SOCKET TO BATT#2 (12V-)	BLK	10	36	3 PR PLUG x 5/16 R/T
45	(FUSE & DIODE IN LINE) K/S (L) TO MCC+	RED	14	3 1/2	1/4" F/S - 3/8" R/T
15	6 PIN BLK TO 24 PIN (#15)	WHT	20	65 1/2	9 PIN - MOLEX
11	6 PIN WHT TO 24 PIN (#11)	WHT	20	65 1/2	9 PIN - MOLEX
12	6 PIN BLK/WHT TO 24 PIN (#10)	WHT	20	65 1/2	9 PIN - MOLEX
17	24 PIN (#17) TO MCC	WHT	20	15	MOLEX - 1/4" F/S
1	24 PIN (#1) TO MCC	WHT	20	17 1/2	MOLEX - 1/4" F/S
9	24 PIN (#9) TO MCC	WHT	20	17 1/2	MOLEX - 1/4" F/S
1A	6 PIN (GRN) TO MCC	WHT	20	68	9 PIN - 1/4" F/S
51	24-PIN #12 TO H/M #3	WHT	20	16	MOLEX-1/4" F/S
49	#47 B/S TO BRAKE SWITCH	RED	14	17	B/S - #8 R/T
47	H/M (#6) #48 MATE TO B/S TO BRK SW	RED	14	68	1/4" F/S - B/S
48	K/S B TO HM (#6) #47 MATE	RED	14	6	1/4" F/S - E/E
52	BRAKE SWITCH TO SEAT SWITCH	WHT	20	105	1/4" F/S - #8 R/T
53	24 PIN (#2) TO SEAT SWITCH	WHT	20	53 1/2	MOLEX - 1/4" F/S
54	H/M (#1) TO K/S (L) #45MATE	RED	14	5	1/4" F/S - 1/4" F/S
55	LIGHT SWITCH TO H/M (#1) #54 MATE	RED	14	7	#8 R/T - 1/4" F/S
58	LIGHT SWITCH TO LIGHT (L)(+)	RED	14	52	#8 R/T - O/E
59	LIGHT SWITCH TO LIGHT (R) (+)	RED	14	36	#8 R/T - O/E
56	H/M (#2) TO CONTROLLER (B-)	BLK	14	24	1/4" F/S - 5/16" R/T
22	24 PIN LOOP (#7) TO (#22) LOOP	WHT	20	3 1/2	MOLEX - MOLEX

0315387 REVISIONS PER J FUSCO 12MAR09




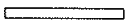
ELECTRIC GREENS ROLLER QC  
WIRING DIAGRAM DWG # 15  
DATED: 03-25-2009

## LED DIAGNOSTICS

A Status LED is built into the 1244 controller. It is visible through a window in the label on top of the controller. This Status LED displays fault codes when there is a problem with the controller or with the inputs to the controller. During normal operation, with no faults present, the Status LED flashes steadily on and off. If the controller detects a fault, a 2-digit fault identification code is flashed continuously until the fault is corrected. For example, code “3,2”—welded main contactor—appears as:

□ □ □ □ □	□ □ □ □ □	□ □ □ □ □
( 3 , 2 )	( 3 , 2 )	( 3 , 2 )

The codes are listed in Table 6.

Table 6 STATUS LED FAULT CODES		
LED CODES		EXPLANATION
<i>LED off</i>		no power or defective controller
<i>solid on</i>		controller or microprocessor fault
0,1	■ □	controller operational; no faults
1,1	□ □	[not used]
1,2	□ □ □	hardware failsafe fault
1,3	□ □ □ □	M-, current sensor, or motor fault
1,4	□ □ □ □ □	[not used]
2,1	□ □ □	throttle fault
2,2	□ □ □ □	static return to off (SRO) fault
2,3	□ □ □ □ □	high pedal disable (HPD) fault
2,4	□ □ □ □ □ □	emergency reverse circuit check fault
3,1	□ □ □ □ □	contactor driver overcurrent
3,2	□ □ □ □ □ □	welded main contactor
3,3	□ □ □ □ □ □ □	precharge fault
3,4	□ □ □ □ □ □ □ □	missing contactor, or main cont. did not close
4,1	□ □ □ □ □ □	low battery voltage
4,2	□ □ □ □ □ □ □	overvoltage
4,3	□ □ □ □ □ □ □ □	thermal cutback, due to over/under temp.
4,4	□ □ □ □ □ □ □ □ □	anti-tiedown fault

NOTE: Only one fault is indicated at a time, and faults are not queued up. Refer to the troubleshooting chart (Table 5) for suggestions about possible causes of the various faults.

**Table 5 TROUBLESHOOTING CHART**

LED CODE	PROGRAMMER LCD DISPLAY	FAULT CATEGORY	EXPLANATION	POSSIBLE CAUSE
1,2	HW FAILSAFE 1 - 2 - 3	1	self-test or watchdog fault	1. Controller defective.
1,3	M- SHORTED	1	internal M- short to B-	1. Controller defective.
	FIELD OPEN	1	field winding fault	1. Motor field wiring loose. 2. Motor field winding open.
	ARM SENSOR	1	armature current sensor fault	1. Controller defective.
	FLD SENSOR	1	field current sensor fault	1. Controller defective.
2,1	THROTTLE FAULT 1	1	wiper signal out of range	1. Throttle input wire open. 2. Throttle input wire shorted to B+ or B-.
	THROTTLE FAULT 2	1	pot low fault	1. Throttle pot defective. 2. Wrong throttle type selected.
2,2	SRO	3	SRO fault	1. Improper sequence of KSI, interlock, and direction inputs. 2. Wrong SRO type selected. 3. Interlock or direction switch circuit open. 4. Sequencing delay too short.
2,3	HPD	3	HPD fault	1. Improper seq. of direction and throttle inputs. 2. Wrong HPD type selected. 3. Misadjusted throttle pot. 4. Sequencing delay too short.
2,4	BB WIRING CHECK	1	emergency reverse wiring fault	1. Emergency reverse wire open. 2. Emergency reverse check wire open.
3,1	CONT DRVR OC	1	cont. driver output overcurrent	1. Contactor coil shorted.
3,2	MAIN CONT WELDED	1	welded main contactor	1. Main contactor stuck closed. 2. Main contactor driver shorted.
3,3	PRECHARGE FAULT	1	internal voltage too low at startup	1. Controller defective. 2. External short, or leakage path to B- on external B+ connection.
3,4	MISSING CONTACTOR	1	missing contactor	1. Any contactor coil open or not connected.
	MAIN CONT DNC	1	main contactor did not close	1. Main contactor missing or wire to coil open.
4,1	LOW BATTERY VOLTAGE	2	low battery voltage	1. Battery voltage < undervoltage cutback limit. 2. Corroded battery terminal. 3. Loose battery or controller terminal.
4,2	OVERVOLTAGE	2	overvoltage	1. Battery voltage > overvoltage shutdown limit. 2. Vehicle operating with charger attached. 3. Battery disconnected during regen braking.
4,3	THERMAL CUTBACK	2	over-/under-temp. cutback	1. Temperature >85°C or < -25°C. 2. Excessive load on vehicle. 3. Improper mounting of controller. 4. Operation in extreme environments.
4,4	ANTI-TIEDOWN	3	Mode 2 or Mode 4 selected at startup	1. Mode switches shorted to B+. 2. Mode switches "tied down" to select Mode 2 or Mode 4 permanently.

## FAULT OUTPUT DRIVERS

The 1244 controller provides two fault output drivers designed for use with a display to provide fault information to the operator. The fault output drivers, Fault 1 (Pin 5) and Fault 2 (Pin 6), are open collector drivers rated at 10 mA maximum current at the nominal battery voltage. They are intended to drive display LEDs but can be used to drive anything that operates within the drivers' limits. These outputs can be configured to display faults in Fault Code format or Fault Category format—see Section 3, page 42.

In Fault Code format, the two fault outputs operate independently. The Fault 1 line flashes the same codes, at the same time, as the controller's built-in Status LED (see Table 6). This line can therefore be used to drive an LED located on the display panel in order to provide fault code information directly to the operator. The Fault 2 line pulls to ground (B-) when a fault is present; it can be used to drive a remote LED that simply indicates whether or not there is a fault. When no faults are present, both of the fault lines are in their normal state (high).

In Fault Category format, the two fault outputs together define one of four fault categories, as listed in Table 7. When a fault occurs, the Fault 1 and Fault 2 lines (Pins 5 and 6) go to the state indicating the category of the particular fault: **LOW/HIGH**, **HIGH/LOW**, or **LOW/LOW**. When the fault is cleared, the fault outputs return to their normal state (i.e., HIGH/HIGH).

Table 7 FAULT CATEGORY CODES			
FAULT 1 DRIVER	FAULT 2 DRIVER	FAULT CATEGORY	POSSIBLE FAULT
HIGH	HIGH	0	(no known faults)
<b>LOW</b>	HIGH	1	Hardware failsafe fault M-, current sensor, or motor fault Throttle fault Emergency reverse wiring fault Contactor or output driver fault Precharge fault
HIGH	<b>LOW</b>	2	Low battery voltage Overvoltage Thermal cutback, due to over/under temp
<b>LOW</b>	<b>LOW</b>	3	Static return to off (SRO) fault High pedal disable (HPD) fault Anti-tiedown fault

## MAINTENANCE

There are no user serviceable parts in the Curtis PMC 1244 controller. **No attempt should be made to open, repair, or otherwise modify the controller.** Doing so may damage the controller and will void the warranty.

It is recommended that the controller be kept **clean and dry** that its diagnostics history file be checked and cleared periodically.

### CLEANING

Periodically cleaning the controller exterior will help protect it against corrosion and possible electrical control problems created by dirt, grime, and chemicals that are part of the operating environment and that normally exist in battery powered systems.



**When working around any battery powered vehicle, proper safety precautions should be taken.** These include, but are not limited to: proper training, wearing eye protection, and avoiding loose clothing and jewelry.

Use the following cleaning procedure for routine maintenance. Never use a high pressure washer to clean the controller.

1. Remove power by disconnecting the battery.
2. Discharge the capacitors in the controller by connecting a load (such as a contactor coil or a horn) across the controller's B+ and B- terminals.
3. Remove any dirt or corrosion from the power and signal connector areas. The controller should be wiped clean with a moist rag. Dry it before reconnecting the battery.
4. Make sure the connections are tight. Refer to Section 2, page 7, for maximum tightening torque specifications for the battery and motor connections.

### DIAGNOSTIC HISTORY

The handheld programmer can be used to access the controller's diagnostic history file. Connect the programmer, press the **[MORE INFO]** key, and then—while continuing to hold the **[MORE INFO]** key—press the **[DIAGNOSTICS]** key. The programmer will read out all the faults that the controller has experienced since the last time the diagnostic history file was cleared. The faults may be intermittent faults, faults caused by loose wires, or faults caused by operator errors. Faults such as contactor faults may be the result of loose wires; contactor wiring should be carefully checked. Faults such as HPD or overtemperature may be caused by operator habits or by overloading.

After a problem has been diagnosed and corrected, it is a good idea to clear the diagnostic history file. This allows the controller to accumulate a new file of faults. By checking the new diagnostic history file at a later date, you can readily determine whether the problem was indeed fixed.

To clear the diagnostic history file, go to the Special Program Menu by pressing and holding the **[MORE INFO]** key, and then pressing the **[PROGRAM]** key. Scroll through the menu until "Clear Diagnostic History" is the top line in the display, and then press **[MORE INFO]** again. The programmer will prompt you to acknowledge or cancel. See Section 7 of this manual for more detail on programmer operation.



### **How to install Electric Motor, Gearbox, and Final Drive**

These instructions must be followed EXACTLY. USE LOC-TITE, Blue

- 1) Install the flange bearings to the roller frame. The flanges should be to the outside of the frame and the bearings should have the exocentric collars towards the outside of the frame also. Install the bolts so they will hold the bearings in place but the bearings will slide if needed.
- 2) Slide the drive shaft through the bearings, installing the sprocket and key.
- 3) Install the shaft keepers outside the flanges at this time keeping the locking bolts loose and not touching anything.
- 4) Set the gearbox on the gearbox-mounting pad.
- 5) Install the four bolts and only tighten to a snug fit. You must be able to slide the box by hand and it must sit flat on the mounting pad.
- 6) Now slide the drive shaft so the end of the drive shaft and the output shaft of the gear box touch. Line up the keyways.
- 7) Install a full key and a split shaft collar over both shafts keeping the ends of both shafts touching and in the center of the shaft collar.
- 8) Tighten this split collar watching the bearings and flanges; they should not be forced left or right but may move up or down within the slots. Move the gearbox if needed to keep the bearings and flanges in a free state.
- 9) Next tighten the flanges watching that the bearings don't move in any direction.
- 10) Now tighten the four gearbox mounting bolts.
- 11) At this time, turn the lock bolts on the shaft keeper so they touch the lock pad. Tighten the jam nuts so as to hold the shaft keeper and bearing in place.
- 12) Set the exocentric collars and tighten the setscrews. With a punch, turn the exocentric collar in a clockwise direction, and then tighten the setscrew.
- 13) Set the sprocket the same distance from the inside wall of the roller frame as the roller sprocket. Tighten the setscrews and shaft collars on both sides of the sprocket.
- 14) The Electric motor comes with a plastic bushing over the shaft. Check the key between the plastic bushing and the motor shaft. It is very important the key is as long as the slot.
- 15) Some motors have a spacer between the motor and gearbox; it must be installed if it was there when disassembled.
- 16) Install the chain between the drive shaft and the roller. This chain should be installed with as little slack as possible. Avoid the use of ½ links.
- 17) Install the idler-adjusting sprocket. Shim the idler sprocket so it fits in the center of the chain, as closely as possible.

Below is a quick reference chart for various “Flat Head Cap Screws” and the torque recommendations.

**VALUES ARE STATED IN FOOT POUNDS**

BOLT SIZE	Thds Per Inch	SAE Grade 5	SAE Grade 8
$\frac{1}{4}$	20	10	14
	28	---	---
5/16	18	19	29
	24	---	---
3/8	16	33	47
	24	---	---
7/16	14	54	78
	20	---	---
$\frac{1}{2}$	13	78	119
	20	---	---
9/16	12	114	169
	18	---	---
5/8	11	154	230
	11	---	---
$\frac{3}{4}$	10	257	380
	10	---	---
7/8	9	382	600
	9	---	---
1	8	587	700
	8	---	---

## **WARRANTY POLICY**

***Please remember to complete and return your Warranty Card and Dealer Delivery Report. Warranty Claims will not be considered if the Warranty Card and Dealer Delivery Report have not been returned to Salsco.***

Your Salsco Commercial or Turf Equipment product is a commercial type product and is normally manufactured and sold for commercial or industrial use. **Salsco will, for the original purchaser, for (5) years from the date of purchase (90 days if used for rental purposes) repair or replace, free of charge, any part or parts found to be defective in material, workmanship or both.** Any transportation or shipping charges will be borne by the purchaser. If, during the warranty period stated above, the product does not function properly due to defect, simply contact Salsco and follow the Warranty Procedures included in this manual.

This warranty **does not** include:

- Incidental or consequential damages and is exclusive of any implied warranties.
- Normal maintenance parts, including, but not limited to hoses, chains, belts, filters, lubricants, etc.
- Parts or components, which are covered under the original manufacturer warranty, including, but not limited to engines, pumps, and motors.

## **WARRANTY PROCEDURE**

In order for Salsco to consider your warranty claims in a timely manner you must follow the simple procedures listed below:

### **MACHINE OR PART FAILURE**

- a) Call our service department for helpful instruction on how to correct or repair the problem. Preventive maintenance will also be suggested.
- b) When ordering parts for Warranty issues, you **MUST** retain possession of the old parts in question until notified with respect to returning the parts to Salsco or other disposition.
- c) Warranty Claims **MUST** be filed within 30-days from completion of the work performed. Contact our office for an electronic warranty claim form.
- d) Fill in all information requested on warranty claim form, a copy of which is included in this manual, (date of purchase, company name, address, etc.). List all parts used. Make sure part numbers are correct. You can obtain these from your manual. (include good description of problem; i.e. "leaking from spool" rather than "leaking").
- e) It is our goal to consider and reach a disposition on each Warranty Claim within 30-days from the date that it is received. Therefore it is important that you respond promptly to any request for further information. Claims with no response to inquiries will be closed as "**denied for lack of response**" 90-days from the date of request.
- f) Email, Fax or Send Warranty Claim form to our Warranty Department. – **Warranty on parts most often requires return of the parts that were replaced. DO NOT DISCARD OLD PARTS UNTIL YOU HAVE RECEIVED A DETERMINATION AS TO WHETHER THESE PARTS MUST BE RETURNED.**
- g) Our Warranty Department will contact and instruct you on how to return the Parts to Salsco on an RA #. Returns **MUST** be made within 30-Days from issuance of RA #. **FREIGHT CHARGES ON RETURN OF PARTS IS THE RESPONSIBILITY OF THE CUSTOMER.** Normal pre-delivery adjustments are not covered under warranty. Labor Warranties are based on reasonable time allowances as determined by Salsco, Inc. and paid at 75% of posted labor rate. **TRAVEL TIME IS NOT REIMBURSED UNDER THE WARRANTY POLICY.**
- h) Be sure to put the RA form inside the box that you are shipping back, also be sure to put on the outside of the box "Return of Goods" and the RA #.
- i) Ship returns via a traceable method such as UPS Ground Service. Be sure that the shipment is insured for the appropriate value. If uninsured parts are lost, we cannot issue a credit.

**PLEASE NOTE:** ***Warranty forms should be filled out completely.***

**PREVENTIVE MAINTENANCE IS YOUR BEST INSURANCE AGAINST EQUIPMENT FAILURE. BE SURE TO READ THIS MANUAL, ESPECIALLY THE MAINTENANCE, OPERATING AND CAUTION SECTIONS.**

**SALSCO, INC., 105 Schoolhouse Rd.  
Cheshire, CT 06410**

**TOLL FREE: 800-872-5726, 203-271-1682, FAX: 203-271-2596 EMAIL: [sales@salsco.com](mailto:sales@salsco.com), [www.salsco.com](http://www.salsco.com)**

## SALSCO WARRANTY CLAIM FORM

<b>SALSCO, INC.</b> <b>105 SCHOOLHOUSE RD.</b> <b>CHESHIRE, CT 06410</b>		<b>PHONE: 203-271-1682, 800-872-5726</b> <b>FAX: 203-271-2596</b> <b>EMAIL: A.Fowler@salsco.com</b> <b>WEB: www.salsco.com</b>
END OWNER	PHONE:	
NAME:	FAX:	
EMAIL:		
ADDRESS:		
PURCHASED FROM:	PHONE:	
NAME:	FAX:	
EMAIL:		
ADDRESS:		
EQUIP/WARRANTY INFO: (MUST BE COMPLETE)		
PURCHASE DATE:	INV #:	DATE FAILED:
MODEL #:	SERIAL #	REPAIR DATE:
HRS USED:		
WARRANTY CLAIM/WORK ORDER #		
WAS A SALSCO RETURN AUTH. # ISSUED FOR REPAIRS OR RETURN OF PARTS:   YES   NO		
IF YES, RA #:		
PROBABLE CAUSE OF FAILURE:		

## SALSCO WARRANTY CLAIM FORM - Continued

WORK PERFORMED/COMMENTS ON REPAIR:				
SHOP LABOR RATE:		SUBMITTED BY:		
TOTAL LABOR HRS TO REPAIR:		PRINTED NAME:		
SALSCO PART #: DESCRIPTION:	QTY	PRICE EACH	TOTAL	INVOICE #:
<p>FILL IN ALL INFORMATION REQUESTED ON WARRANTY CLAIM FORM. <b>INCOMPLETE FORMS CANNOT BE PROCESSED &amp; WILL BE RETURNED.</b> LIST ALL PARTS USED. MAKE SURE PART NUMBERS ARE CORRECT. ANY PARTS THAT YOU BELIEVE TO BE DEFECTIVE OR ANY PARTS THAT BREAK SHOULD BE RETAINED FOR POSSIBLE INSPECTION UNTIL AFTER THE WARRANTY HAS BEEN PAID OR PART HAS BEEN RETURNED. <b>INV. # NEEDS TO BE INCLUDED ON WARRANTY CLAIM.</b></p>				
<b>OFFICE USE ONLY</b>				
DATE REC'D:		DLR. DEL REPORT ON FILE:      YES      NO		
CUST ID:		WARRANTY CLAIM ON FILE:      YES      NO		
SALSCO WC:		PARTS TOTAL:		
SALSCO RA:		LABOR TOTAL:		
DATE APPROVED:		TOTAL APPROVED:		
DATE REJECTED:		REJECTED DATE:		
PROCESSED BY:		REASON:		



## SERVICE RECORD

If kept properly, this schedule will help track problems in the future.

[illegible]

MODEL # \_\_\_\_\_ S/N \_\_\_\_\_

DATE PURCHASED: \_\_\_\_\_