

Salsco, INC.
LEADER BY DESIGN

MADE IN THE U.S.A

OPERATORS AND PARTS MANUAL COBRA CURBER



MANUFACTURER OF OUTDOOR POWER EQUIPMENT

Products for Turf & Lawncare, Rental, Construction, Tree care, Wood Processing, Nursery & Farm Industries

Other Salsco Equipment

3-1/2" - 18", Gas, Diesel, and P.T.O, Wood/Brush Chippers

Chipper Shredder Vacuum - Tailgate & Truckloader Vacuums up to 65 HP

Shaving Mills - Gas and Electric Greens Rollers

***Quality of Workmanship, Innovative
Design, Built to Last!***

105 School House Road

Cheshire, CT 06410 U.S.A.

800-872-5726, 203-271-1682, 203-271-2596 (Fax)

sales@salsco.com, www.salsco.com

TABLE OF CONTENTS
MODEL COBRA CURBER DESCRIPTION

COVER & TABLE OF CONTENTS.....Pages 1 – 2

STANDARD MOLD SAMPLESPage 3

STATEMENT OF FACT Page 4

SAFETY & OPERATING INSTRUCTIONSPage 6 - 7

SERVICE & MAINTENANCE INSTRUCTIONSPage 8

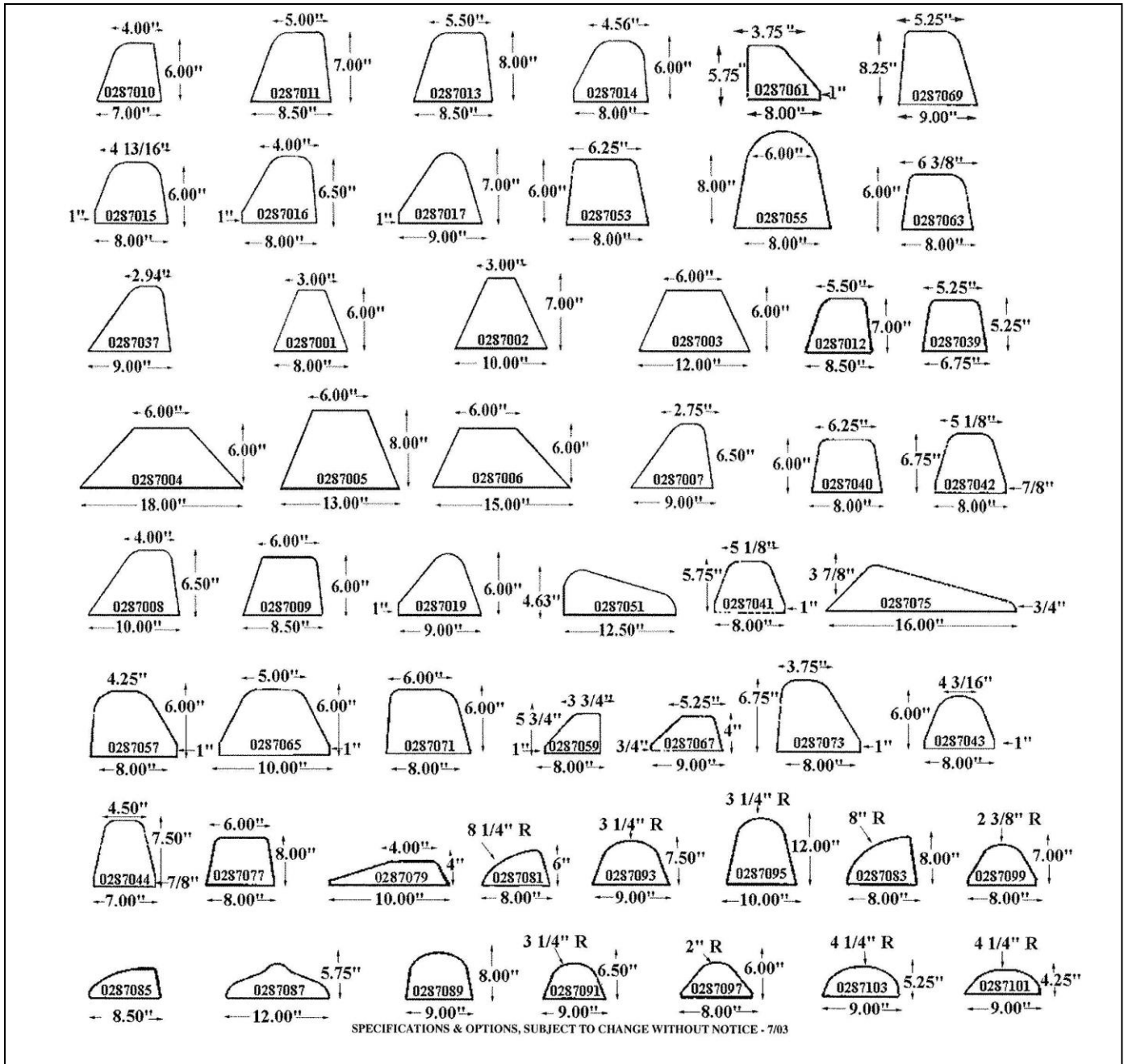
PARTS DIAGRAMSPages 9 - 13

TORQUE CHARTSPage 14

SERVICE SCHEDULE LOGPage 18

SALSCO, INC.
105 School House Road
Cheshire, CT 06410
800-872-5726, 203-271-1682
203-271-2596 (Fax)
www.salsco.com sales@salsco.com

Pictured below are most of the Standard Molds that are available. Should you require something that is not listed below, Special Order Molds can be manufactured by Salsco.



STATEMENT OF FACT

You have just purchased the highest quality, most dependable, Curber, on the market today. This unit has the ability to meet exact standards and perform for years with minimum downtime. **HOWEVER**, it cannot read nor will it understand this manual no matter how long you leave it on top of the machine.

It is your responsibility to read and understand this manual; it is also your responsibility to be certain this information is passed along to anyone who is expected to operate this equipment. Should you choose not to read, understand and pass along the information provided you, please expect equipment failure and possible injuries to persons around this equipment.

For the safety of the operator, it is **imperative** that this manual is carefully read and understood.

Once you have read this manual, it is your responsibility to be sure that all new operators read and understand this manual, especially all cautions stated.

As a manufacturer of equipment, we have a responsibility to design a safe piece of equipment. **NOTE:** The important safeguards and instructions in this manual are not meant to cover all possible conditions and situations that may occur. It must be understood that common sense, caution, and care are factors, which cannot be built into any product. These factors must be supplied by the person(s) caring for and operating this equipment.

ONLY YOU CAN PREVENT ACCIDENTS!!

SAFETY PRECAUTIONS

The following safety precautions are suggested to help prevent accidents

A careful operator is the best operator. Most Accidents can be avoided by observing certain precautions. Read and take the following precautions before operating this machine to help prevent accidents. Equipment should be operated only by those who are responsible and instructed to do so.

1. Read the owner's manual **BEFORE** operating this machine.
2. Know the controls and their functions prior to operation.
3. Know how to shut it off quickly.
4. **DO NOT** modify/alter or allow anyone else to modify/alter this machine or any of its components or any functions.
5. **DO NOT** allow children, or anyone not trained in the operation of this machine, operate this machine.
6. **DO NOT** allow adults to operate this machine without proper instruction.
7. **DO NOT** use this machine unless the area of operation is clear of all persons, especially small children.
8. **ALL** shields and guards **MUST** be in place prior to operation.
9. Replace safety warning and operation decals when they become damaged.
10. **DO NOT** leave operator's position while engine is running.
11. **DO NOT** Operate on severe slopes, hills or embankments.
12. **DO NOT** use gasoline to clean parts.
13. **NEVER** replace missing fuel caps with approved replacements.
14. **DO NOT** operate with air filter or cover missing.
15. **DO NOT** operate with faulty or missing muffler.
16. **DO NOT** operate gasoline engines indoors.
17. Keep people and pets a safe distance from machine.
18. **ALWAYS** shut engine off and disconnect spark plug wire before servicing this and all machines.
19. Handle gasoline with care. It is highly flammable.
20. Use only approved gasoline storage containers.
21. **DO NOT** attempt to fill gas tank from fuel container unless the spout or funnel fits inside the fuel tank.
22. **NEVER** fill gas tanks indoors.
23. **NEVER** take the cap off or refuel while the engine is running or hot: allow the engine to cool for several minutes.
24. **DO NOT** smoke while refueling or anywhere near fuel.
25. **DO NOT** store, spill or use gas near open flame.
26. Wipe up any spills immediately.
27. **DO NOT** fill tank to capacity; allow room for expansion.

NEVER OPERATE THIS UNIT WITHOUT GUARDS PROPERLY INSTALLED

OPERATING INSTRUCTIONS

1. Spray inside of Hopper, Compaction Tube and Mold with No. 2 fuel oil or kerosene.
2. Measure and strike a chalk line on pavement in relation to the inside edge of the curb. Depending on the mold style you choose this could be 4" - 8".
3. Put your Cobra Curber in place over the line.
4. Align the pointer so it is even with the inside edge of your mold, and directly over the chalk line.
5. Adjust the front wheel assembly to avoid driving in tack coat. (if used)
6. Adjust all wheels so both edges of your mold are even, and resting on the base course.
7. Apply a light tack coat ahead of the curber, in the path of the curb mold.
8. Start your engine and allow it to warm up. When the engine is warm increase throttle speed, this engages the clutch to start the auger rotating.
9. Fill the hopper slowly and allow the mold to fill and pack with asphalt. It may be necessary to block the opening of the mold to compact material.
10. At this point the force of extruded asphalt will start the curber in a forward motion.
11. Fill the hopper steadily and steer it directly over the line.
12. At the end of the run, throttle engine down to stop extruding and cut and shape with shovel.

NOTES: It's advisable to use tack coat on base coarse, binder, and topcoat. (Not always needed on new bituminous pavement.)

You should start a run 12" or so before the desired area and cut off at desired point with shovel.

Pavement jobs should be planned so you use up all materials at end of curb laying.

The COBRA CURBER is designed for optimum compaction of asphalt. Greater compaction may be obtained on uphill and down grade by raising the rear wheels. This transfers the weight to the curb form.

DO NOT allow material to remain in hopper when not in operation.

NEVER OPERATE THIS UNIT WITHOUT GUARDS INSTALLED

MAINTENANCE

The COBRA CURBER is designed to give the utmost in service with a minimum of breakdowns, but to do this, an inspection schedule by the operator must be used.

DAILY:

1. Check crankcase oil level. (Use and change in accord with engine manufacturer's instructions)
2. Check fuel. Use a clean dry container and fresh fuel.
3. Check and clean air filter.
4. Check engine, exhaust, carburetor, etc. for secure attachment.

LUBRICATION:

1. There are 9-grease fittings on your Cobra Curber; one on each of the wheels, on the tie rod ends, on each of the auger shaft bearings, and on the rear height adjuster. These should be greased regularly.
2. A spray lubricant should be applied to the throttle and choke cable.
3. Apply Grease to the front height adjuster gears; they are located under the plastic caps.

GENERAL MAINTANCE:

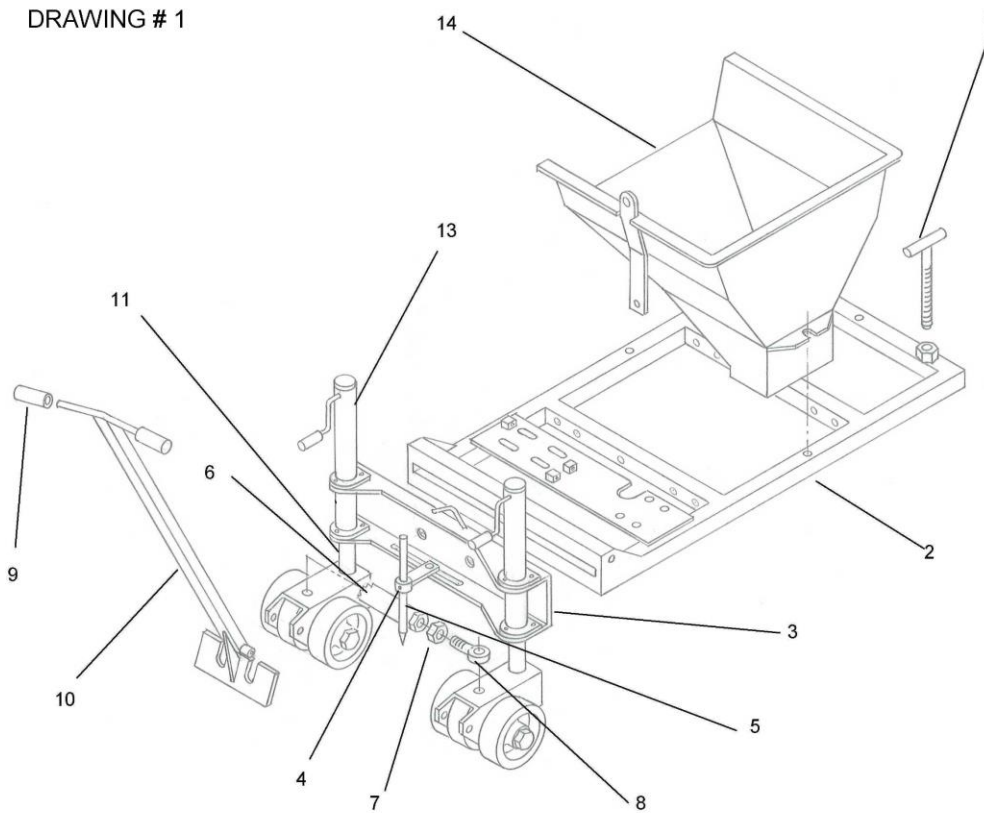
1. Always remove all asphalt/concrete from hopper at the end of every workday. Be sure to get all deposits in auger area, and compaction tube.
2. Gearbox lubricant should be changed every 25-hours. Replace fluid with approved 90-weight gear oil.
3. The air filter located on the engine should be replaced after every 20-hours of use, or as conditions warrant. Use only approved replacement parts at all times.
4. Belts should be check periodically and adjusted as needed. Tension is obtained by loosening the engine and tightening the adjuster bolt provided.

ALWAYS SHUT OFF ENGINE, REMOVE KEY, AND DISCONNECT SPARK PLUG WIRE BEFORE SERVICING. BE SAFE – NOT SORRY!

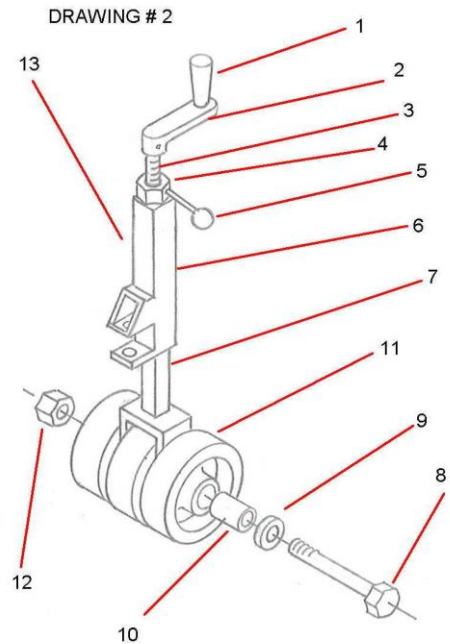
DRAWING # 1			
ITEM #	DESCRIPTION	PART #	QTY.
1	Adjuster, Mold Tension	0201007	1
2	Frame, Main	0219228	1
3	Frame, Pivot - Front	0219351	1
4	Support, Pointer	0277093	1
5	Rod, Pointer	0445097	1
6	Rod, Tie, Front	0245098	1
7	Jam Nut	0338051	2
8	Rod End	0303044	2
9	Handle, Rubber	0332009	2
10	Handle, Steering	0223057	1
11	Jack, Front, Inner Pivot	0269049	2
13	Jack, Front, Outer Tube	0269013	2
14	Hopper	0226069	1

NOTE: SEE DWG. # 5 FOR WHEEL ASSEMBLY

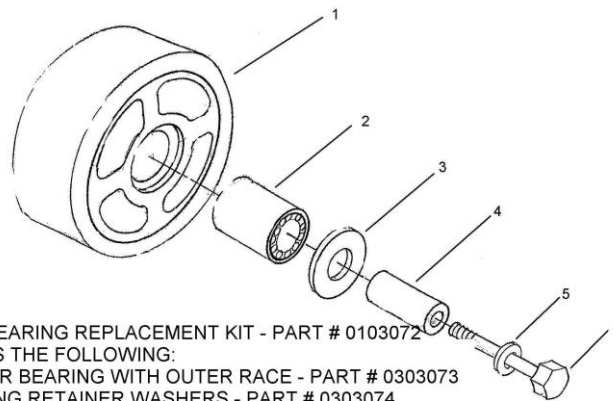
Rev. 11/23/2011



DRAWING # 2 – REAR JACK ASSEMBLY			
ITEM #	DESCRIPTION	PART #	QTY.
1	Handle, Alum	0323065	1
2	Handle, Crank	0223063	1
3	Jack, Rear, Screw	0269016	1
4	Lever, Locking	0233089	1
5	Knob	0332005	1
6	Jack, Rear, Outer WDMT.	0269011	1
7	Jack, Rear, Inner WDMT.	0269012	1
8	Axle, Wheels	0202056	3
9	Washer, Flat	0353110	6
10	Bushing, Wheels	0407024	9
11	Wheel	0354048	9
12	Lock Nut	0338105	3
13	Jack, Rear, Sub-Assembly	0169010	1



DRAWING #5



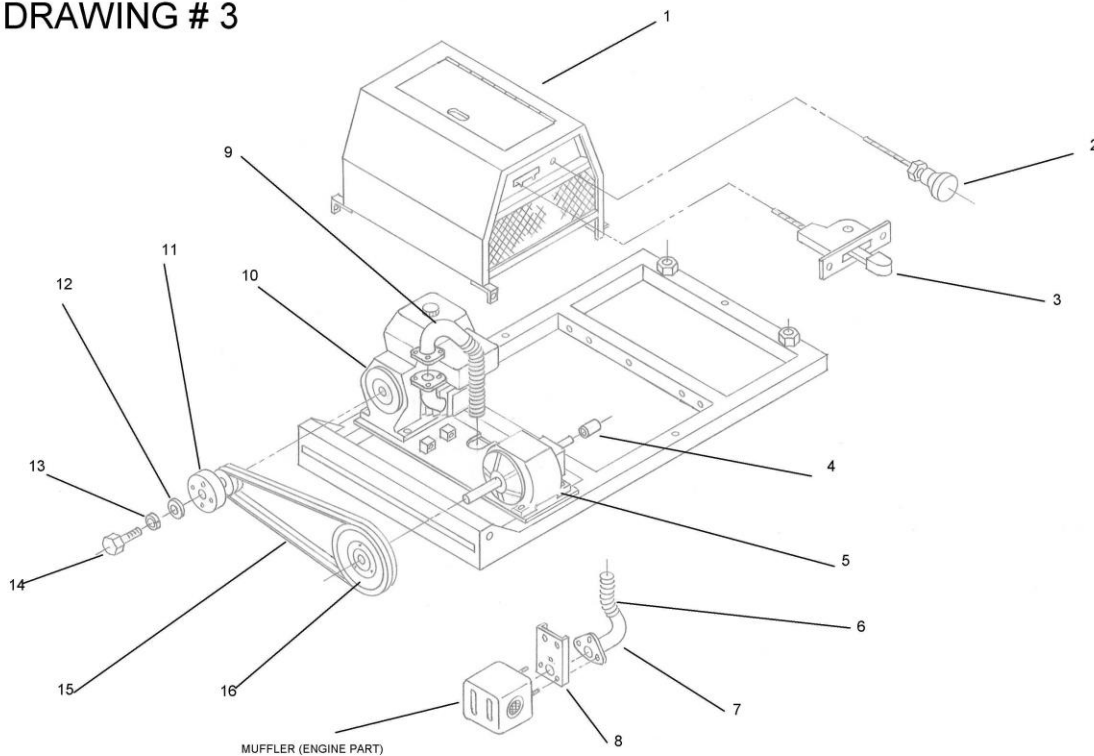
WHEEL BEARING REPLACEMENT KIT - PART # 0103072
 INCLUDES THE FOLLOWING:
 1 - ROLLER BEARING WITH OUTER RACE - PART # 0303073
 2 - BEARING RETAINER WASHERS - PART # 0303074
 1 - BUSHING - PART # 0407024

DRAWING # 5 – FRONT & REAR WHEEL ASSEMBLY			
ITEM #	DESCRIPTION	PART #	QTY.
1	8" Wheel Assy. (Complete with Bearing Installed)	0354048	1
2	Roller Bearing with Outer Race	0303073	1
3	Bearing Retainer Washer	0303074	1
4	Bushing	0407024	1
5	Washer	0353110	1
6	Wheel Axle Bolt	0202056	1

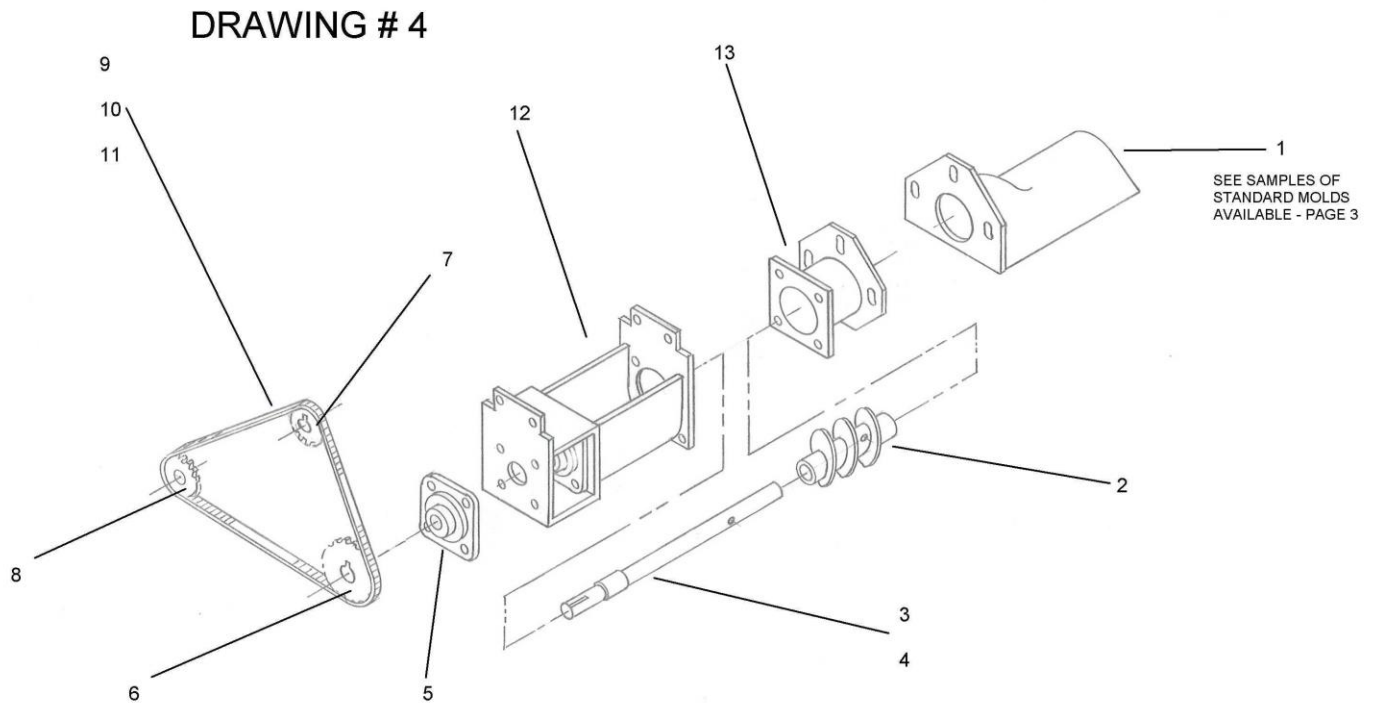
DRAWING # 3			
ITEM #	DESCRIPTION	PART #	QTY.
1	Enclosure, Engine	0237166	1
2	Choke, Cable Assembly	0337154	1
3	Throttle, Cable Assembly	0308035	1
4	Bushing	0307025	1
5	Gear Reducer	0337169	1
6	Exhaust Metal Hose	0337173	1
7	Exhaust Elbow, Muffler	0237172	1
8	Bracket, Muffler	0406456	1 </td
9	Exhaust Elbow, Eng.	0237171	1
10	Engine, 13HP Honda	0337023	1
11	Clutch, Assembly	0337167	1
12	Washer, Flat	0353102	1
13	Washer, Lock	0353103	1
14	Bolt, Hex HD	0346243	1
15	"V" Belt, Single	0304044	2
16	Pulley	0342095	1

NOTE: Should you have the old style Throttle Cable (which is no longer available), and you are replacing it with the new style Throttle Cable, please see page 13 for hole placement to upgrade to the new style Throttle Cable.

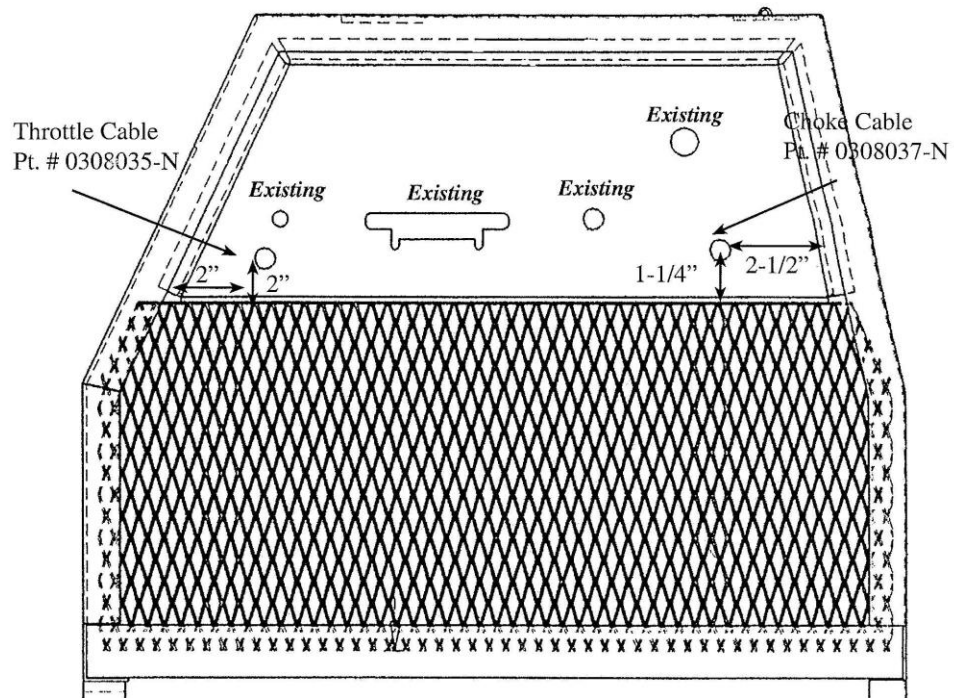
DRAWING # 3



DRAWING # 4			
ITEM #	DESCRIPTION	PART #	QTY.
1	Mold	See Page 3	1
2	Auger, Cast - 2 Piece	0336102	1
3	Shaft, Auger - Single Hole	0248115	1
4	Shaft, Auger - Double Hole	0248165	1
5	Bearing	0303045	2
6	Sprocket, Auger Shaft	0351070	1
7	Sprocket, Gear Reducer	0351071	1
8	Sprocket, Idler	0351072	1
9	Chain, Roller	0309048	1
10	Master Link	0309049	1
11	Half Link	0309050	1
12	Auger Hsg	0236090	1
13	Auger Tube	0236089	1



**HOLE PLACEMENT TO UPGRADE FOR
NEW STYLE THROTTLE CABLE & CHOKE**

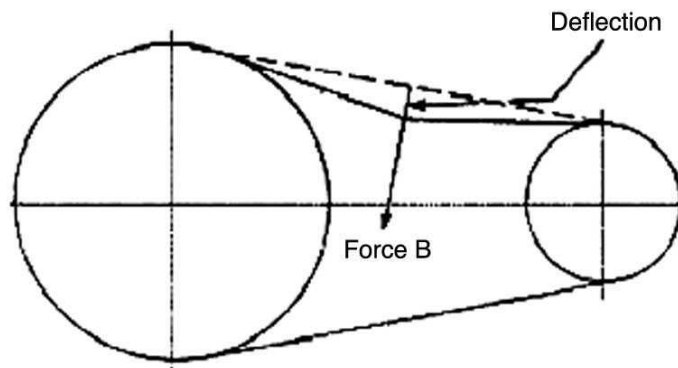


Below is a quick reference chart for various “Flat Head Cap Screws” and the torque recommendations.

VALUES ARE STATED IN FOOT POUNDS

BOLT SIZE	Thds Per Inch	SAE Grade 5	SAE Grade 8
1/4	20	10	14
	28	---	---
5/16	18	19	29
	24	---	---
3/8	16	33	47
	24	---	---
7/16	14	54	78
	20	---	---
1/2	13	78	119
	20	---	---
9/16	12	114	169
	18	---	---
5/8	11	154	230
	11	---	---
3/4	10	257	380
	10	---	---
7/8	9	382	600
	9	---	---
1	8	587	700
	8	---	---

Drive Belt Tension Measurement by Deflection



Deflection should be 3/8" when 8-12 lbs. push is applied at "B"

