

**Quality of Workmanship
Innovative Design
Built to Last!**

Salsco, INC.
LEADER BY DESIGN



**MADE IN
THE U.S.A.**

Track Chippers Models 8635TK & 8637TK



MANUFACTURER OF OUTDOOR POWER EQUIPMENT

Products for Turf & Lawncare, Rental, Construction, Tree Care, Wood Processing, Nursery & Farm Industries

3-1/2" - 18" Capacity, Gas, Diesel, & PTO Wood/Brush Chippers - Slab Chippers
Gas, Electric & Tow Behind Rollers - Tranz-Former Roller - CRV Core Recovery Vehicle
Mini-Paver - Mini-Track Paver - Cobra Curbers - Scorpion Router - Concrete Paver
Chipper Shredder Vacuums - Tailgate & Truckloader Vacuums
9 cu. yds. - 50 cu. yds. Per Hour, Electric, PTO & Diesel Powered Shaving Mills

Salsco, INC.
LEADER BY DESIGN

105 Schoolhouse Road
Cheshire, CT 06410 U.S.A.
800-872-5726 (Toll Free), 203-271-1682, 203-271-2596 (Fax)
www.salsco.com, sales@salsco.com

TABLE OF CONTENTS

TRACK CHIPPER, Models 8635TK & 8637TK

COVER & TABLE OF CONTENTS.....	Pages 1 – 2
STATEMENT OF FACT	Page 3
SPECIFICATIONS & FEATURES	Page 4
MACHINE REGISTRATION	Page 5
SAFETY & OPERATING INSTRUCTIONS	Pages 6 – 7
TORQUE CHART	Page 8
PARTS DIAGRAMS	Pages 9 - 26
WARRANTY POLICY & PROCEDURE	Page 27
COPY OF WARRANTY CLAIM FORM.....	Pages 28 – 29
COPY OF WARRANTY CARD & DEALER DELIVERY REPORT.....	Page 30
SERVICE SCHEDULE LOG	Page 31

SALSCO, INC.

105 Schoolhouse Road
Cheshire, CT 06410 USA
800-872-5726, 203-271-1682
203-271-2596 (Fax)
www.salsco.com, sales@salsco.com

STATEMENT OF FACT

You have just purchased the highest quality, most dependable, chipper on the market today. This unit has the ability to meet exact standards and perform for years with minimum downtime. **HOWEVER**, it cannot read nor will it understand this manual no matter how long you leave it on top of the machine.

It is your responsibility to read and understand this manual; it is also your responsibility to be certain this information is passed along to anyone who is expected to operate this equipment. Should you choose not to read, understand and pass along the information provided you, please expect equipment failure and possible injuries to persons around this equipment.

For the safety of the operator, it is imperative that this manual is carefully read and understood.

Once you have read this manual, it is your responsibility to be sure that all new operators read and understand this manual, especially all cautions stated.

As a manufacturer of equipment, we have a responsibility to design a safe piece of equipment. NOTE: The important safeguards and instructions in this manual are not meant to cover all possible conditions and situations that may occur. It must be understood that common sense, caution, and care are factors, which cannot be built into any product. These factors must be supplied by the person(s) caring for and operating this equipment.

ONLY YOU CAN PREVENT ACCIDENTS!

SPECIFICATIONS & FEATURES

ENGINE OPTION:	37HP Briggs & Stratton, E.F.I. gas, electric start.
FUEL TANK:	7" x 31-7/8" x 22" steel tank. 20.5 gallon capacity, with lockable filler cap with dip stick.
BATTERY:	12 volt, CCA 650, automotive type, lockable box.
CLUTCH:	Centrifugal clutch, size 6 type P
EXHAUST CHUTE:	360° hand crank, height adjustable exhaust chute with easy adjust exhaust directional flap.
INFEED OPENING:	6" high x 12" wide opening at the infeed.
INFEED TRAY:	Extra wide, 57" wide x 33" high, 1/4" thick steel plate sides, with fold down infeed tray. Control bar positioned at top of infeed tray to control movement of the feed roll. High speed, low speed, neutral & reverse.
FEED ROLL:	One (1), 7" long x 12" diameter, weighted, replaceable blades, fully welded.
IMPELLER HOUSING:	1/4" thick steel, impeller housing is vented to provide more air flow for chip exhaust. Electric safety lock.
IMPELLER:	Fully balanced, 1" thick x 26" diameter steel impeller with four (4) welded and gusseted exhaust paddles. 200 lbs. (Approximately)
CHIP BLADES:	Four (4), 1/2" thick x 5" long x 4" wide, double-sided.
BED KNIVES:	Two (2), one horizontal, one vertical. Both are 1" thick steel, replaceable, sharpenable & adjustable
BEARINGS:	4-bolt, heavy duty, cast iron, greaseable & self-centering.
HYDRAULIC COMPONENTS	Hoses: SAE JIC hose ends & fittings. 3,000 P.S.I. working, 12,000 P.S.I. burst. Motors - Two (2), Char-Lynn 29.4 displacement, one (1) Char-Lynn 17.9 displacement. Pump - Hydro-Gear, variable speed piston type tandem pump.
HYDRAULIC TANK	7" x 18" x 10-7/8" steel tank. 4.6 gallon capacity, with lockable filler cap with dip stick.
FRAME:	Single piece welded box construction, 3/8" plate.
TRACKS:	Two (2), Bridgestone rubber tracks.
OPTIONS:	Speed sensing.
PAINT:	Orange, polyester powder coat paint provides excellent outdoor weatherability and offers protection against ultraviolet discoloration. All parts painted separately.
GUARDS/DECALS:	All moving parts guarded. Full set of safety decals.
DIMENSIONS:	Width: 2' 9", Height: 7' 6", Weight: 3,960 lbs. (Approximately)

SPECIFICATIONS - Transport Trailer

AXLE:	3,500 lb. Torflex axle, features an independent suspension, cushioned with rubber, providing a smooth, quiet ride with no transfer of road shock from one wheel to the other.
TIRE/WHEEL ASSEMBLIES:	Two (2), ST225/80R16 LR "E", 10 Ply.
TONGUE:	2" x 3" x 1/4" wall, rectangular steel tube. Bolt on tongue bracket is 1/2" steel plate bracket with 1/4" gussets.
HITCH:	Adjustable height hitch. 2-5/16" ball or 3" pintle coupler.
JACK:	Side-wind swivel snap ring mount jack. 2,000lb. lift capacity.
LOCKING PIN:	Locking pin to accommodate 3" pintle coupler, welded to the chipper.
FENDERS/LIGHTS:	Extra heavy duty 1/4" thick diamond plate fenders with safety light guards. LED light package, D.O.T. approved.
FRAME:	Welded structural steel. 3" x 2" x 1/4" wall rectangular steel tube, continuous welds for strength and gusseted where needed.
PAINT:	Black, polyester powder coat paint provides excellent outdoor weatherability and offers protection against ultraviolet discoloration. All parts painted separately.
DIMENSIONS:	Width: 5' 9" Length: 10' Weight: 800 lbs. (Approximately) GVWR - 5,200 lbs.
REV. 3/27/2020	All Specifications and Options Subject to Change Without Notice

MACHINE REGISTRATION

MANUFACTURED BY:

SALSCO, INC.
105 Schoolhouse Rd., Cheshire, CT 06410
800-872-5726, 203-271-1682, 203-271-2596 (Fax)
sales@salsco.com www.salsco.com

THIS MANUAL COVERS MODEL(s): _____, _____

This company reserves the right to discontinue, add improvements to, or change the design of any model or product at any time without obligation to improve existing machines, either by changing the design or adding new parts.

It has been and will continue to be the policy of SALSCO to update existing machines at its own discretion. Whenever possible, new designs will be made in such a way that they can be "Retro Fit" if so desired.

Record in the space provided below the model and serial number of this unit. Please retain these numbers for future reference.

NO PARTS ORDERS will be accepted **WITHOUT A SERIAL NUMBER, MODEL NUMBER AND PART NUMBERS**. All part numbers are listed in this manual.

Serial Number

Model Number

NOTE: Be sure to complete your warranty card. This will ensure immediate processing of any warranty claims.

READ AND UNDERSTAND THIS MANUAL BEFORE STARTING THE MACHINE

BRUSH CHIPPERS
ANSI Z133.1-2006
American National Standard for Arboricultural Operations
Safety Requirements

5.3 Brush Chippers

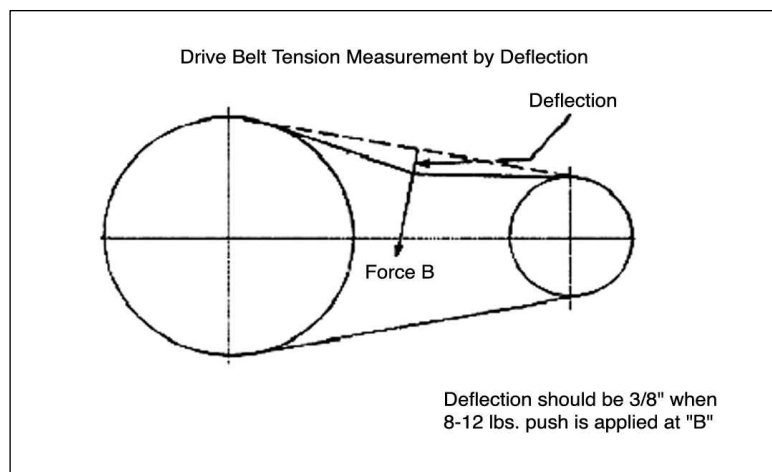
- 5.3.1 The items contained in section 5.1 shall always be included in the review of this section.
- 5.3.2 Access panels (for example, guards) for maintenance and adjustment, including discharge chute and cutter housing, shall be closed and secured prior to starting the engine of brush chippers. These access panels shall not be opened or unsecured until the engine and all moving parts have come to a complete stop (see Annex C, General Safety Procedures That Apply to All Tree Work).
- 5.3.3 Rotary drum or disc brush chippers not equipped with a mechanical infeed system shall be equipped with an infeed hopper not less than 85 inches (2.15 m) measured from the blades or knives to ground level over the center line of the hopper. Side members of the infeed hopper shall have sufficient height so as to prevent workers from contacting the blades or knives during operations.
- 5.3.4 Rotary drum or disc brush chippers not equipped with a mechanical infeed system shall have a flexible anti-kickback device installed in the infeed hopper to reduce the risk of injury from flying chips and debris.
- 5.3.5 Chippers equipped with a mechanical infeed system shall have a quick-stop and reversing device on the infeed system. The activating mechanism for the quick-stop and reversing device shall be located across the top, along each side, and close to the feed end of the infeed hopper within easy reach of the worker.
- 5.3.6 Vision, hearing, and/or other appropriate personal protective equipment shall be worn when in the immediate area of a brush chipper in accordance with section 3.4, Personal Protective Equipment.
- 5.3.7 Arborists, mechanics, and other workers shall not, under any circumstances, reach into the infeed hopper when the cutter disc, rotary drum, or feed rollers are moving.
- 5.3.8 When trailer chippers are detached from the vehicles, they shall be chocked or otherwise secured in place.
- 5.3.9 When in a towing position, chipper safety chains shall be crossed under the tongue of the chipper and properly affixed to the towing vehicle.
- 5.3.10 See section 8.6, Brush Removal and Chipping, for additional requirements.

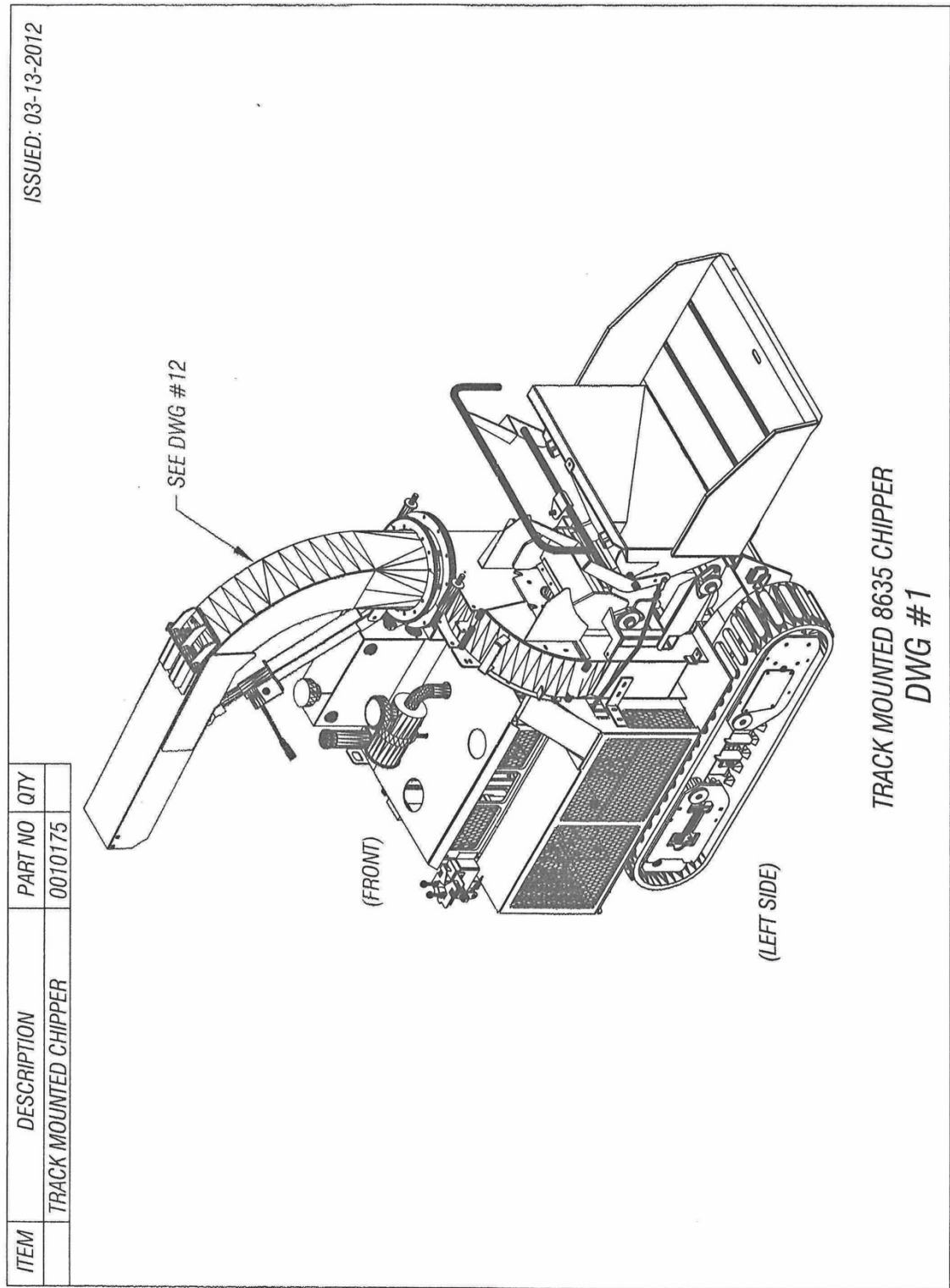
BRUSH REMOVAL AND CHIPPING
ANSI Z133.1-2006
American National Standard for Arboricultural Operations
Safety Requirements

8.6 Brush Removal and Chipping

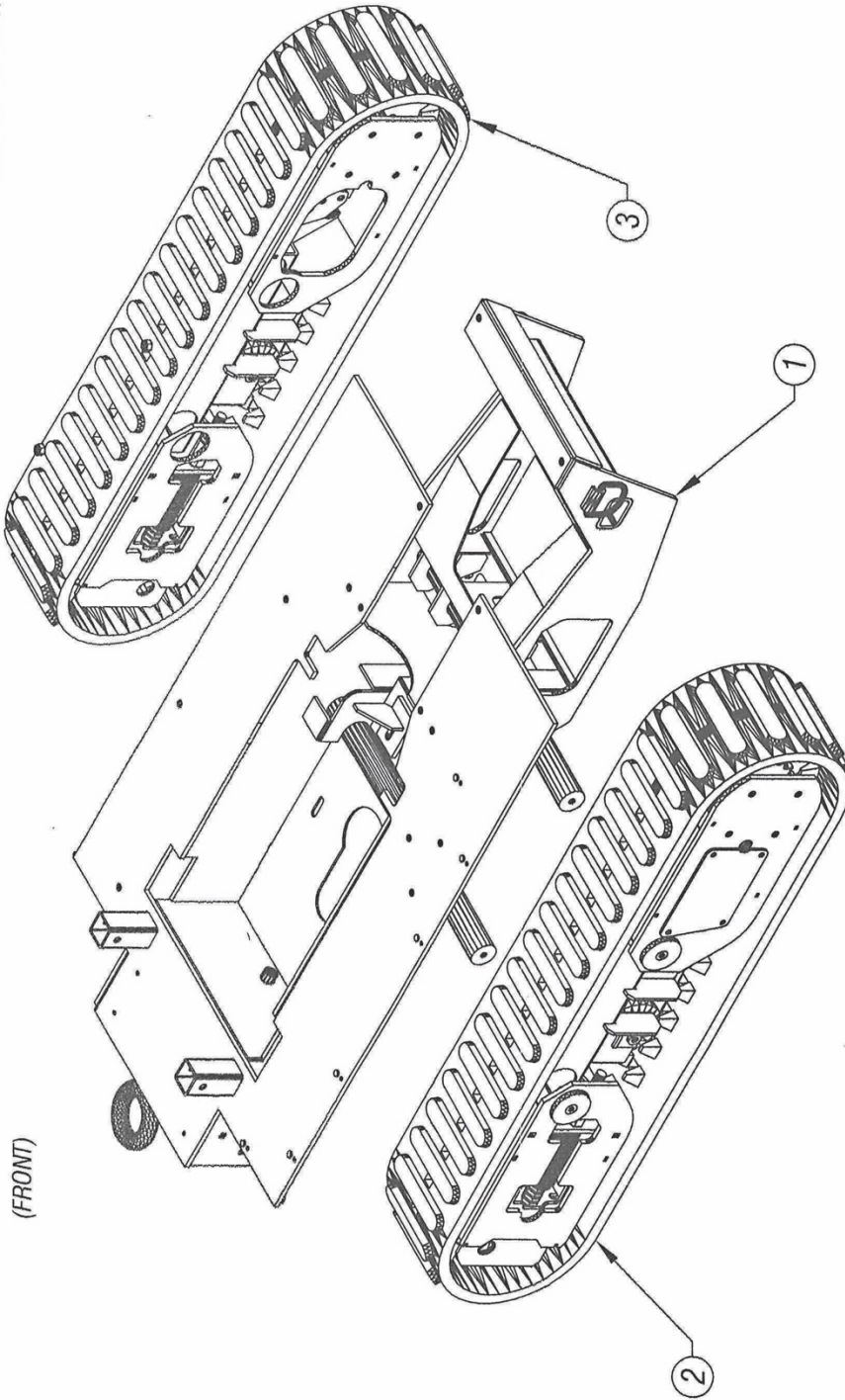
- 8.6.1 Traffic control around the jobsite shall be established prior to the start of chipping operations along roads and highways (see section 3.2, Traffic Control Around the Jobsite).
- 8.6.2 Brush and logs shall not be allowed to create hazards in the work areas.
- 8.6.3 To prevent an entanglement hazard, loose clothing, climbing equipment, body belts, harnesses, lanyards, or gauntlet-type gloves (for example, long-cuffed lineman's or welder's gloves) shall not be worn while operating chippers.
- 8.6.4 Personal protective equipment shall be worn when in the immediate area of chipping operations in accordance with section 3.4, Personal Protective Equipment, of this standard.
- 8.6.5 Training shall be provided in the proper operation, feeding, starting, and shutdown procedures for the chipper being used.
- 8.6.6 Maintenance shall be performed only by those persons authorized by the employer and trained to perform such operations.
- 8.6.7 Brush and logs shall be fed into chippers, butt or cut end first, from the side of the feed table center line, and the operator shall immediately turn away from the feed table when the brush is taken into the rotor or feed rollers. Chippers should be fed from the curb-side whenever practical.
- 8.6.8 The brush chipper discharge chute or cutter housing cover shall not be raised or removed while any part of the chipper is turning or moving. Chippers shall not be used unless a discharge chute of sufficient length or design is provided that prevents personal contact with the blades (see Annex C, General Safety Procedures That Apply to All Tree Work).
- 8.6.9 Foreign material, such as stones, nails, sweepings, and rakings, shall not be fed into chippers.
- 8.6.10 Small branches shall be fed into chippers with longer branches or by being pushed with a long stick.
- 8.6.11 Hands or other parts of the body shall not be placed into the infeed hopper. Leaning into or pushing material into infeed hoppers with feet is prohibited.
- 8.6.12 While material is being fed into the chipper infeed hopper chute, pinch points continually develop within the material being chipped and between the material and machine. The operator shall be aware of this situation and respond accordingly.
- 8.6.13 When feeding a chipper during roadside operations, the operator shall do so in a manner that prevents him or her from stepping into traffic or being pushed into traffic by the material that is being fed into the chipper.
- 8.6.14 When using a winch in chipper operations, the operator shall ensure that the winch cable is properly stored before initiating chipper operations.
- 8.6.15 Refer to section 5.3, Brush Chippers, for additional information.

BOLT SIZE	Thds Per Inch	SAE Grade 5	SAE Grade 8
$\frac{1}{4}$	20 28	10 ---	14 ---
$\frac{5}{16}$	18 24	19 ---	29 ---
$\frac{3}{8}$	16 24	33 ---	47 ---
$\frac{7}{16}$	14 20	54 ---	78 ---
$\frac{1}{2}$	13 20	78 ---	119 ---
$\frac{9}{16}$	12 18	114 ---	169 ---
$\frac{5}{8}$	11 11	154 ---	230 ---
$\frac{3}{4}$	10 10	257 ---	380 ---
$\frac{7}{8}$	9 9	382 ---	600 ---
1	8 8	587 ---	700 ---



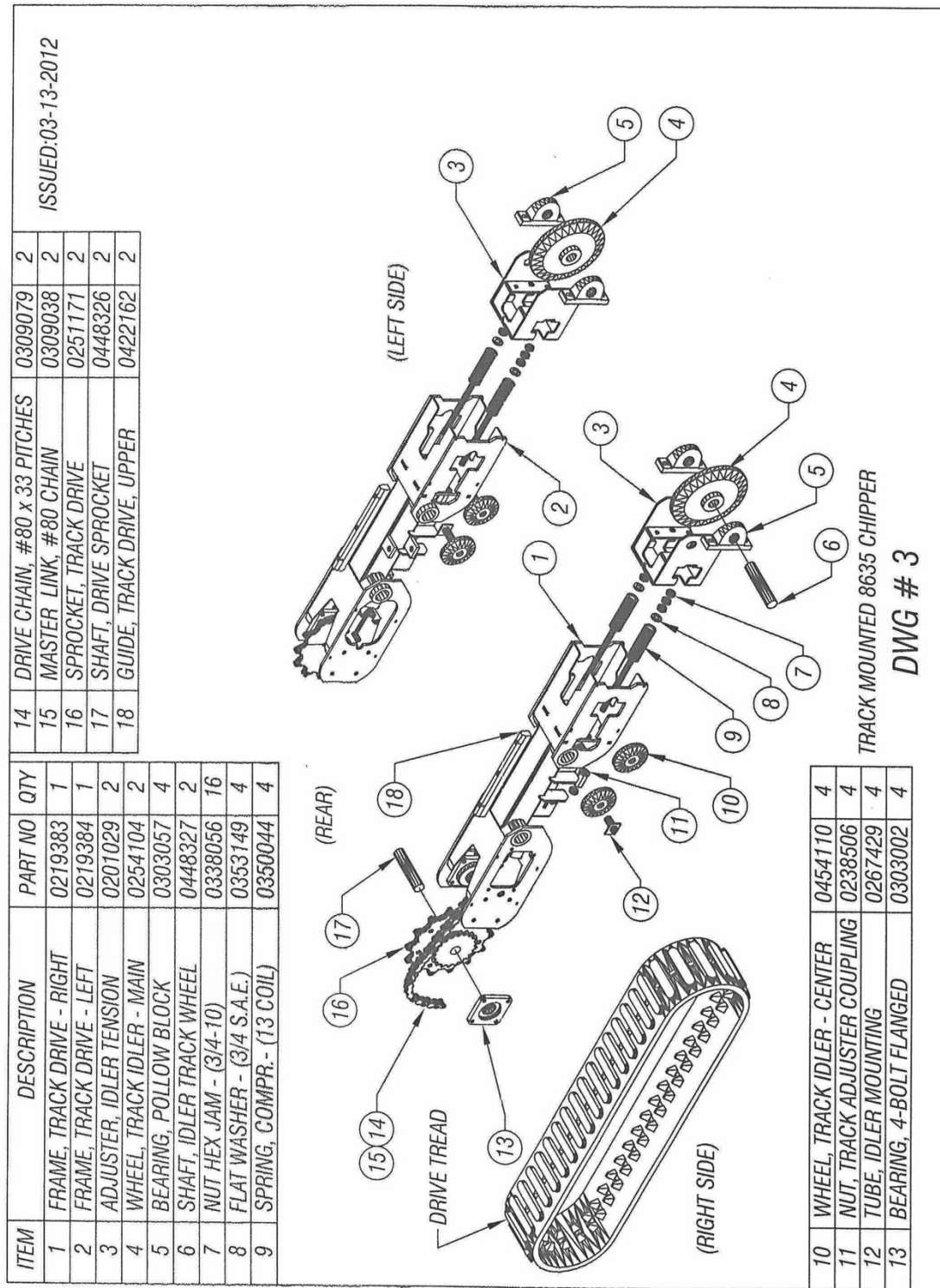


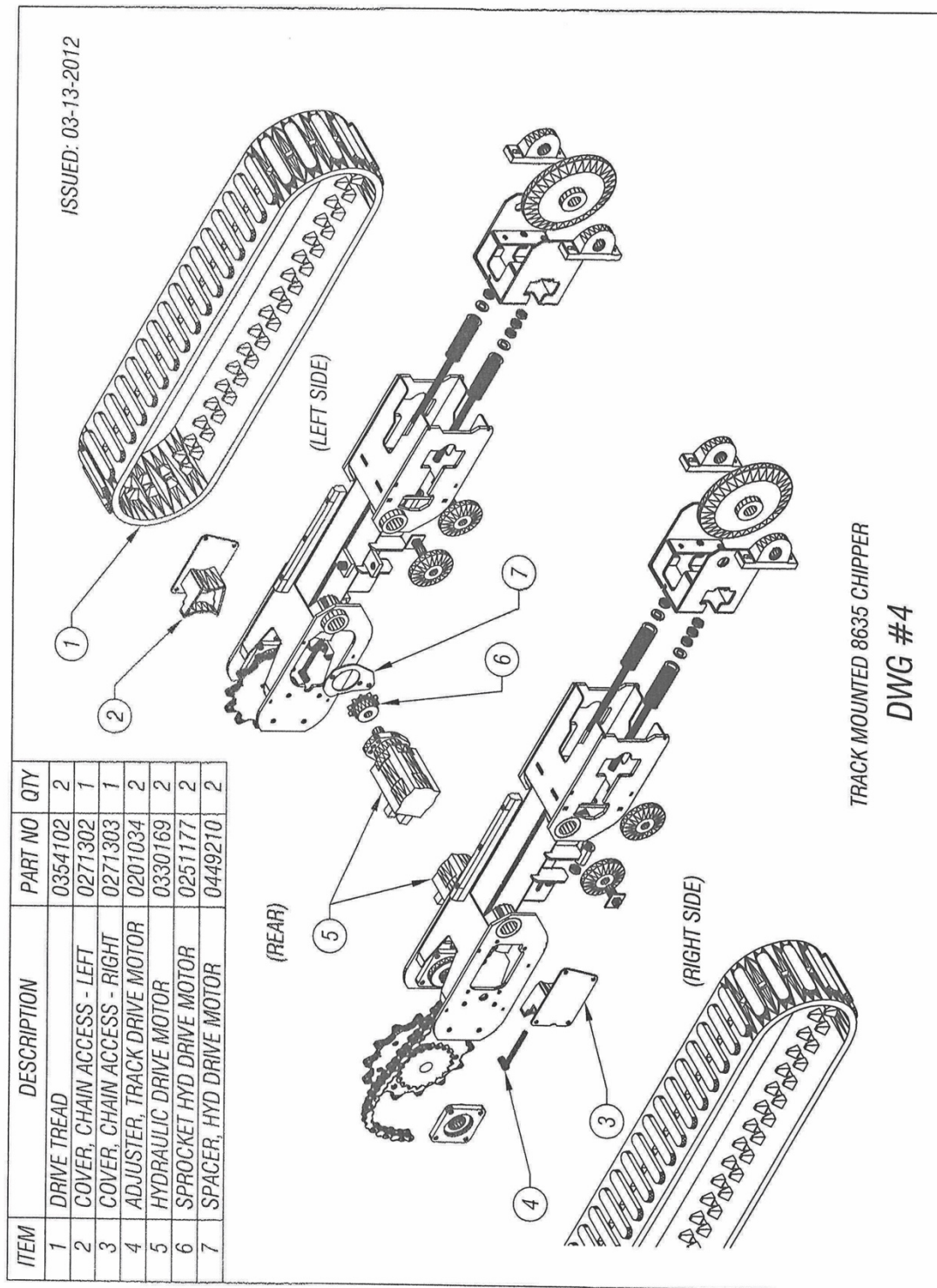
ISSUED: 03-13-2012



TRACK MOUNTED 8635 CHIPPER
DWG #2

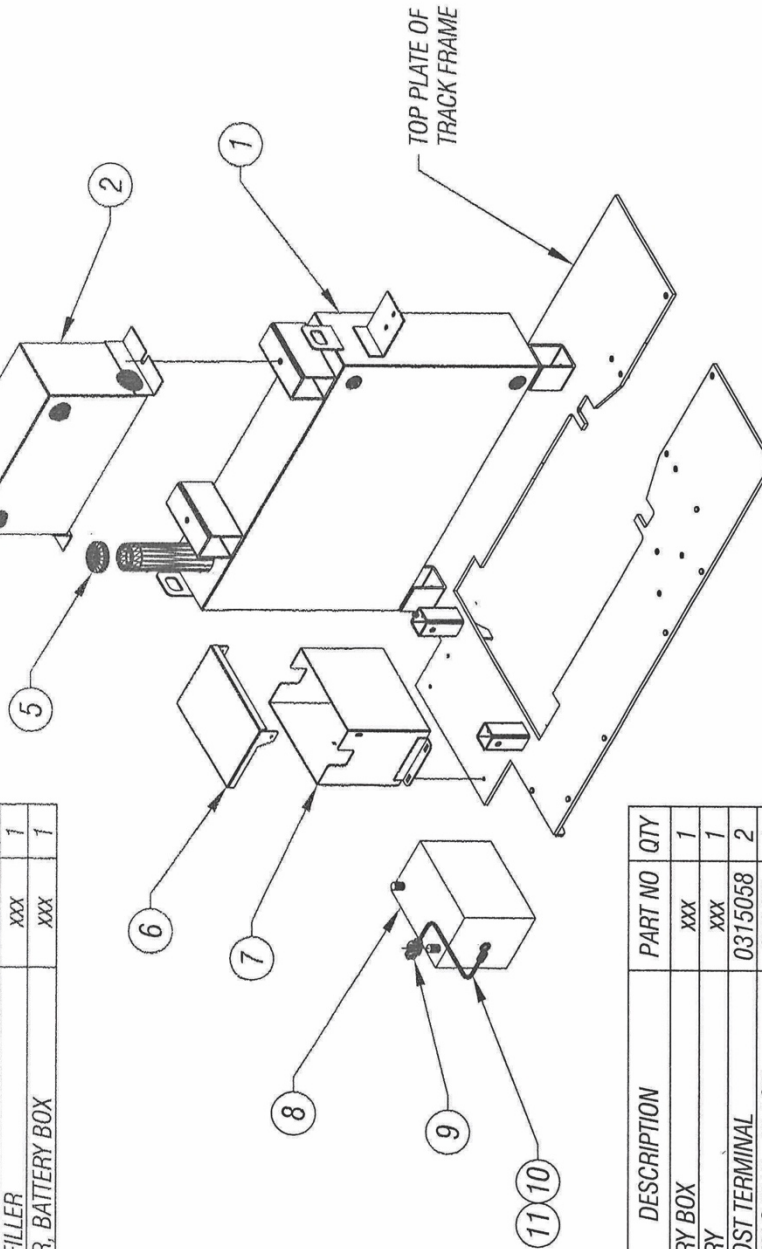
ITEM	DESCRIPTION	PART NO	ITEM
1	TRACK FRAME	0219513	1
2	LEFT SIDE TRACK ASSY	SEE DWG #3 & DWG #4	
3	RIGHT SIDE TRACK ASSY	SEE DWG #3 & DWG #4	





ISSUED: 03-13-2012

ITEM	DESCRIPTION	PART NO	QTY
1	GAS TANK	xxx	1
2	HYDRAULIC TANK	xxx	1
3	CAP, FILLER	xxx	1
4	CAP, FILL LOCKING	0271024	1
5	CAP, FILLER	xxx	1
6	COVER, BATTERY BOX	xxx	1

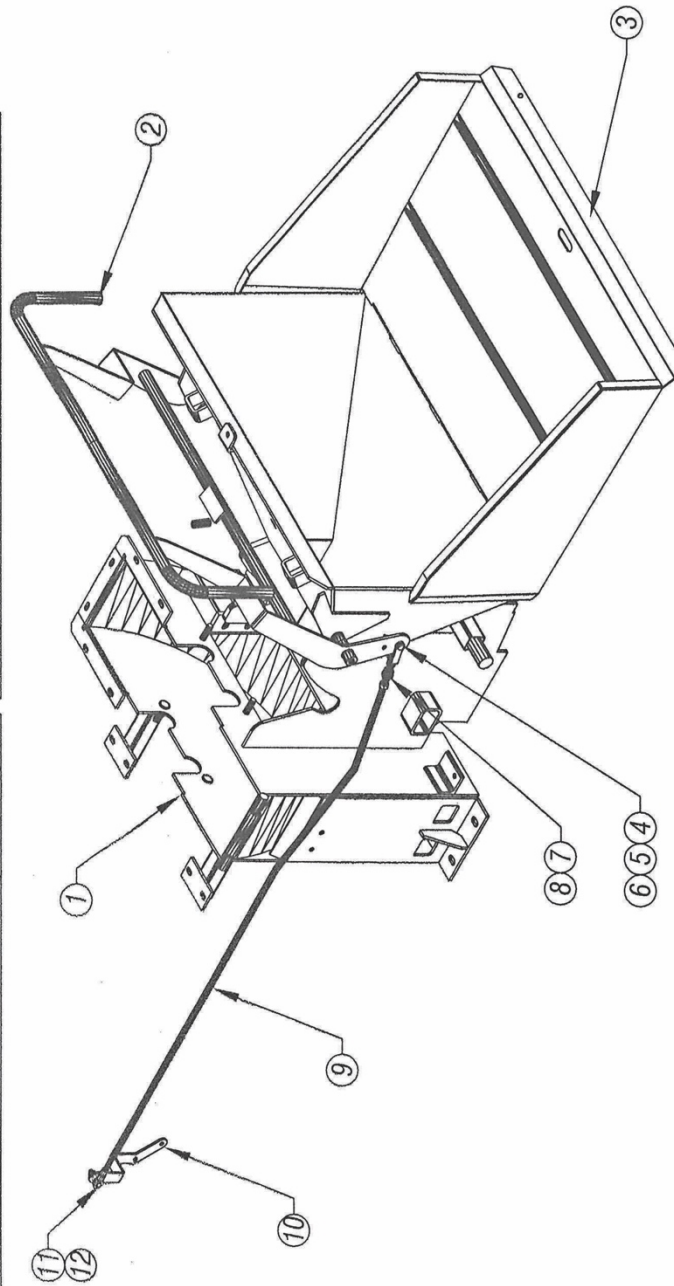


TRACK MOUNTED 8635 CHIPPER
DWG #5

ITEM	DESCRIPTION	PART NO	QTY
7	BATTERY BOX	xxx	1
8	BATTERY	xxx	1
9	TOP POST TERMINAL	0315058	2
10	BATTERY CABLE - BLACK	STOCK	1
11	BATTERY CABLE - RED	STOCK	1

ITEM	DESCRIPTION	PART NO	QTY	ITEM	DESCRIPTION	PART NO	QTY
1	HOUSING, IMPELLER - LOWER	xxx	1	7	HOUSING, IMPELLER - LOWER	xxx	1
2	HOUSING, IMPELLER - LOWER	xxx	1	8	HOUSING, IMPELLER - LOWER	xxx	1
3	HOUSING, IMPELLER - LOWER	xxx	1	9	HOUSING, IMPELLER - LOWER	xxx	1
4	HOUSING, IMPELLER - LOWER	xxx	1	10	HOUSING, IMPELLER - LOWER	xxx	1
5	HOUSING, IMPELLER - LOWER	xxx	1	11	HOUSING, IMPELLER - LOWER	xxx	1
6	HOUSING, IMPELLER - LOWER	xxx	1	12	HOUSING, IMPELLER - LOWER	xxx	1

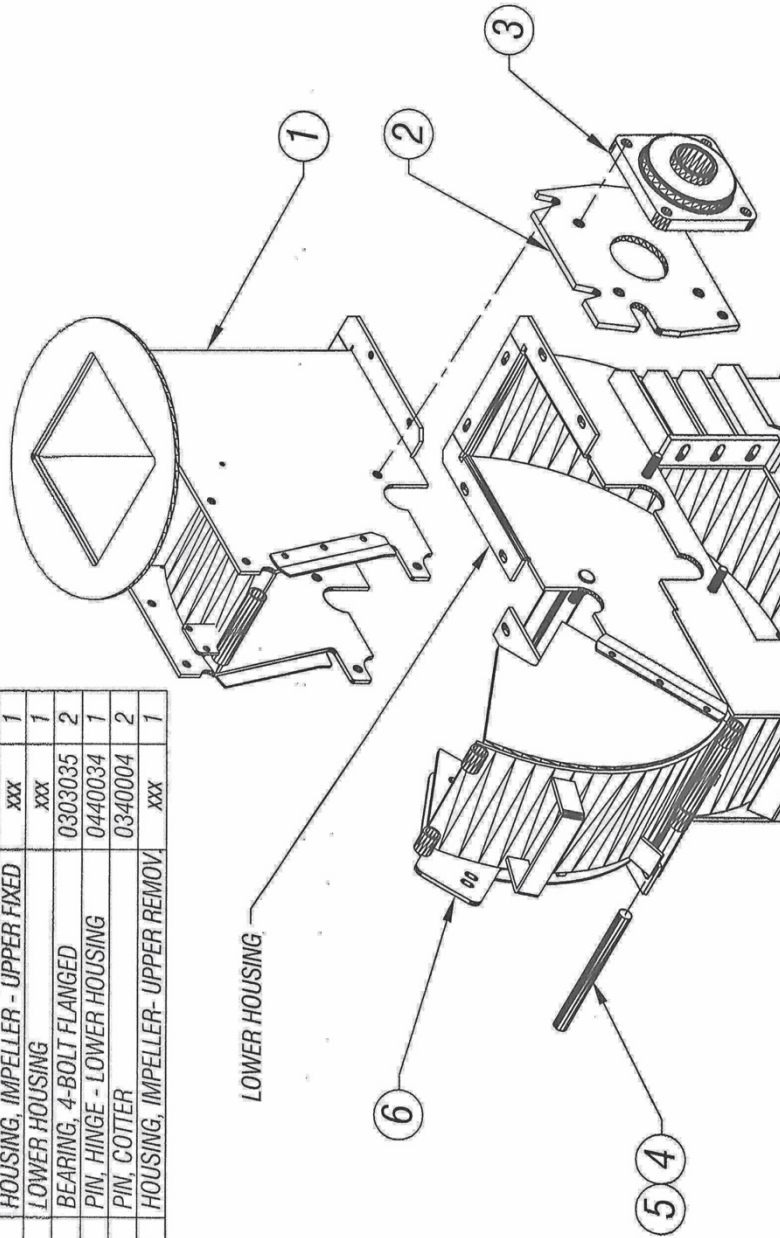
ISSUED: 03-13-2012



TRACK MOUNTED 8635 CHIPPER
DWG #6

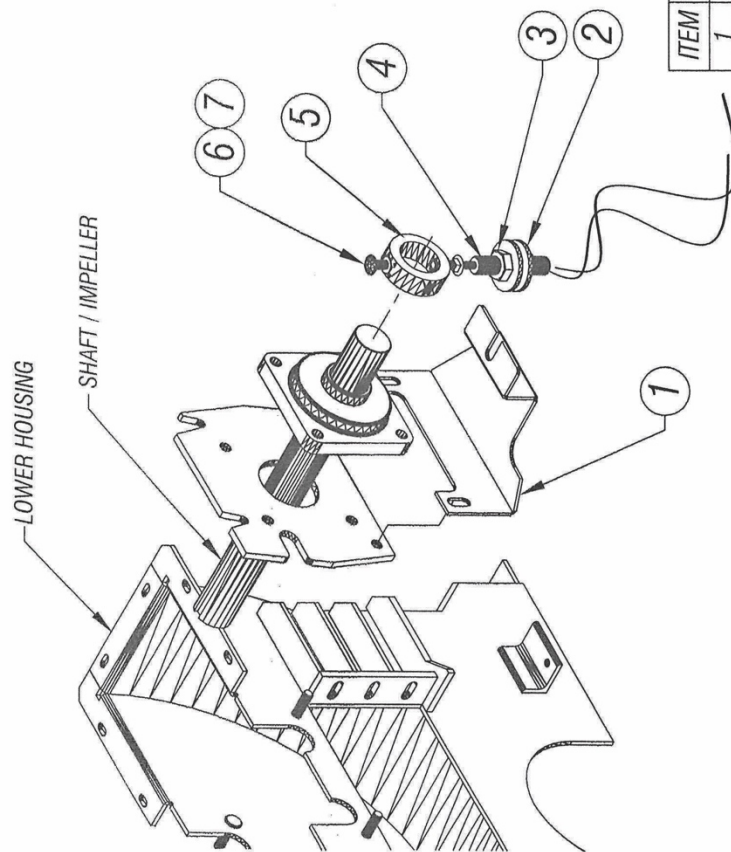
ISSUED: 03-13-2012

ITEM	DESCRIPTION	PART NO	QTY
1	HOUSING, IMPELLER - UPPER FIXED	xxx	1
2	LOWER HOUSING	xxx	1
3	BEARING, 4-BOLT FLANGED	0303035	2
4	PIN, HINGE - LOWER HOUSING	0440034	1
5	PIN, COTTER	0340004	2
6	HOUSING, IMPELLER- UPPER REMOV	xxx	1



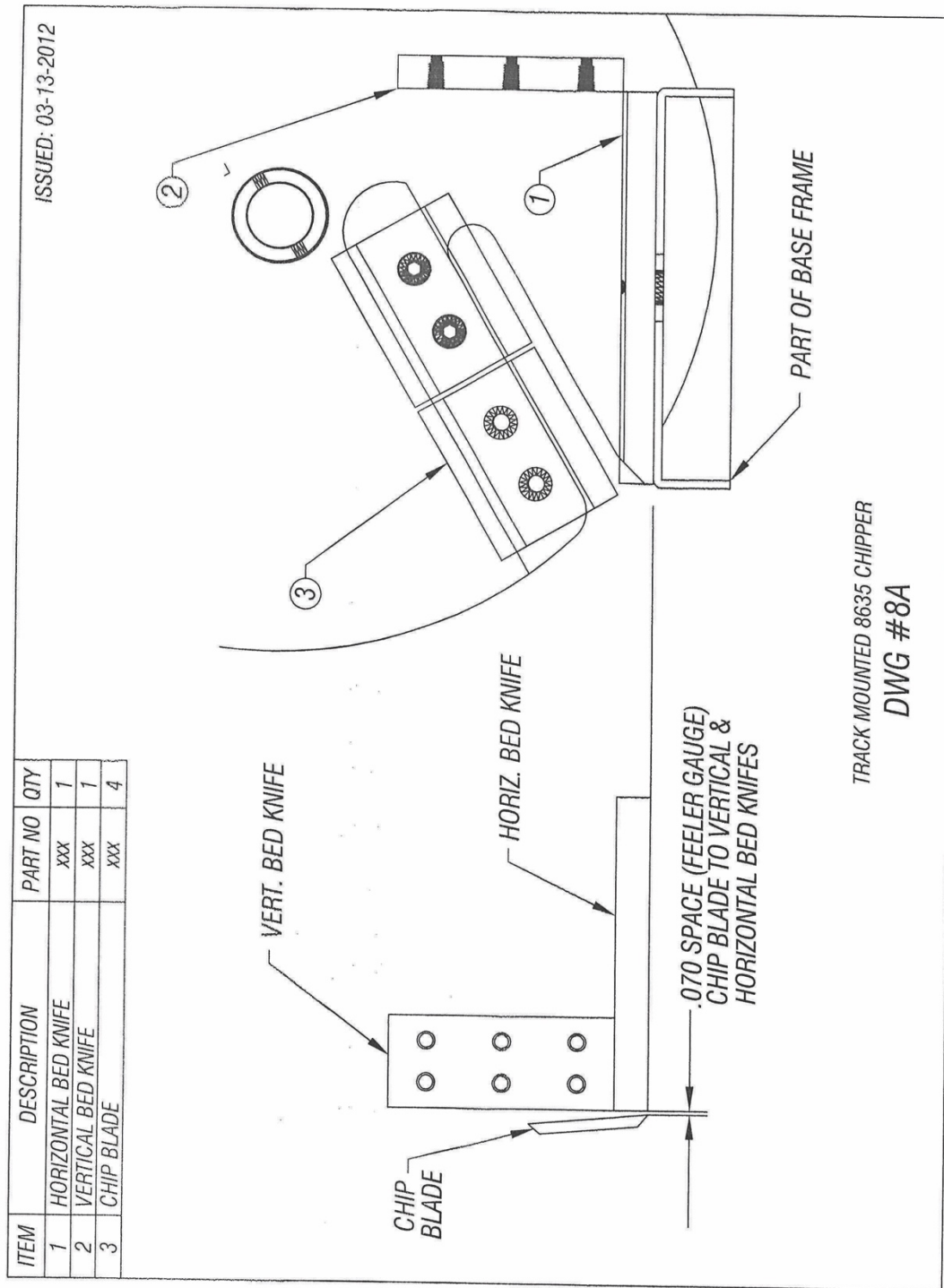
TRACK MOUNTED 8635 CHIPPER
DWG #7

ISSUED: 12-18-2013

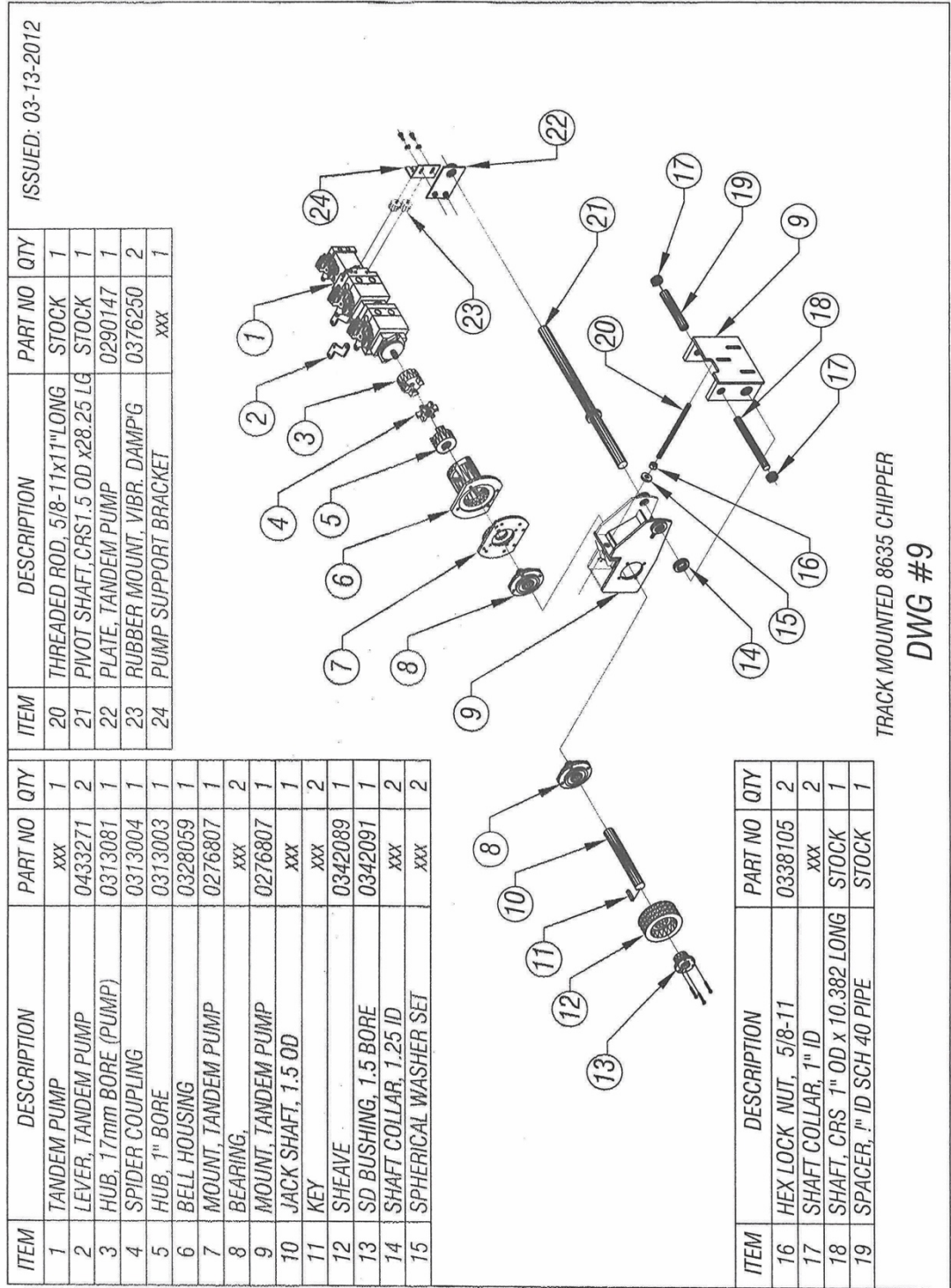


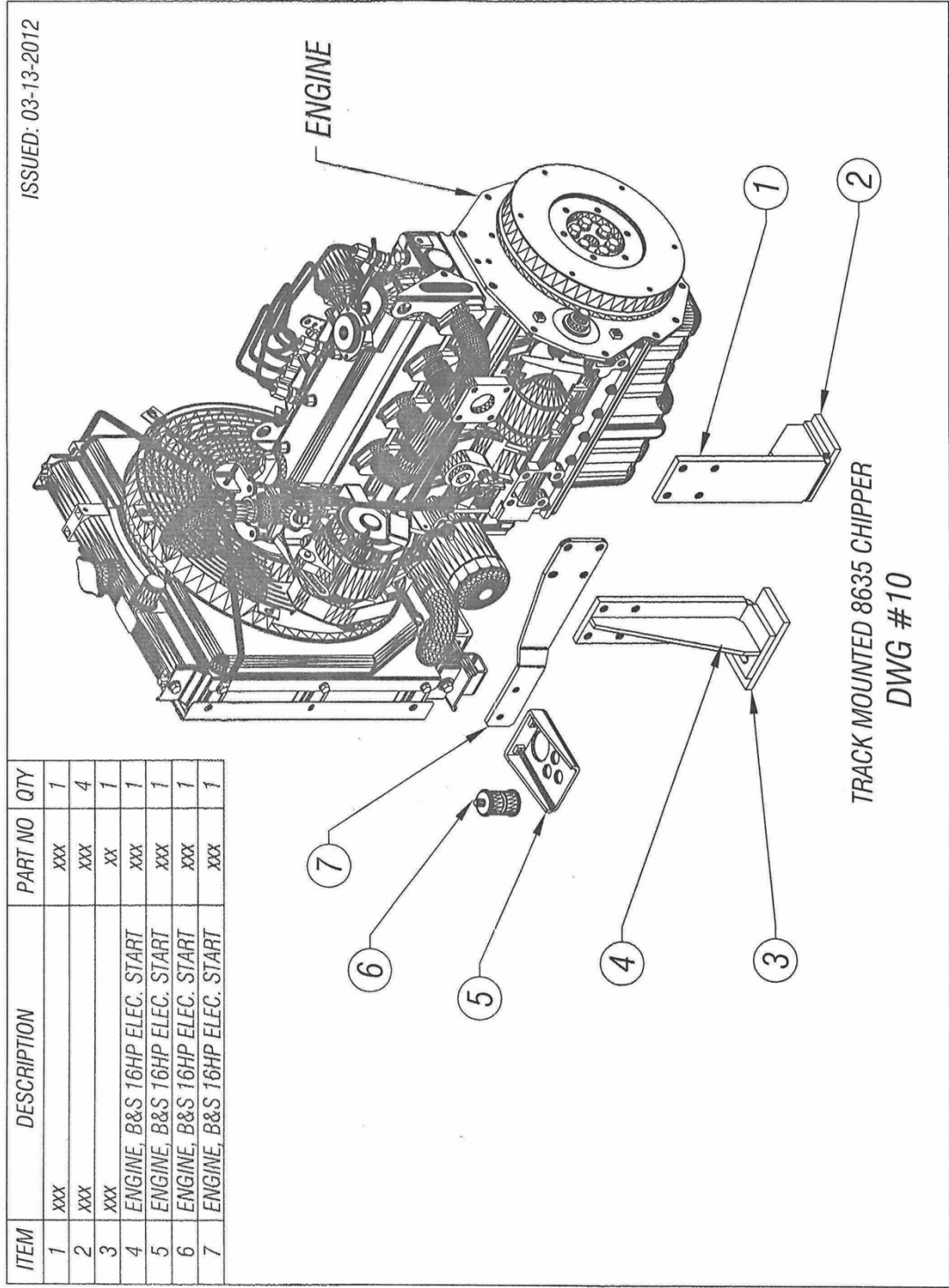
ITEM	DESCRIPTION	PART NO	QTY
1	BRACKET, MAG. PICK-UP MOUNTING	0488114	1
2	WASHER, FLAT	0353105	2
3	HEX NUT (.625-18)	0338045	2
4	MAGNETIC PICK-UP	0315128	1
5	COLLAR	xxx	1
6	BOLT, CARRIAGE .375-16 UNC x 1" LG	0346228	2
7	NUT, HEX JAM (.375-16 UNC)	0338052	2

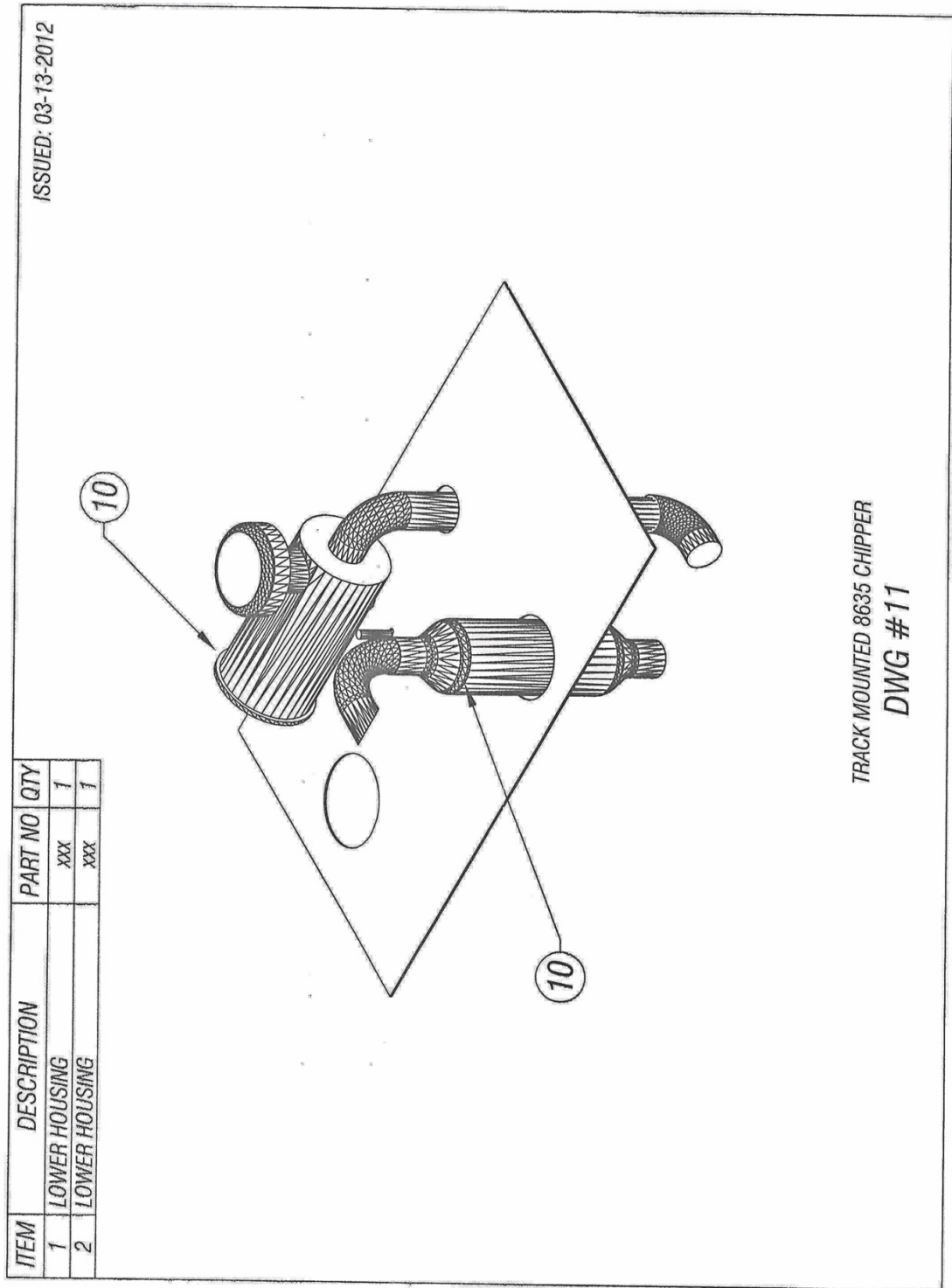
SPEED SENSING OPTION #xxxxx
TRACK MOUNTED 8635 CHIPPER
DWG #7A

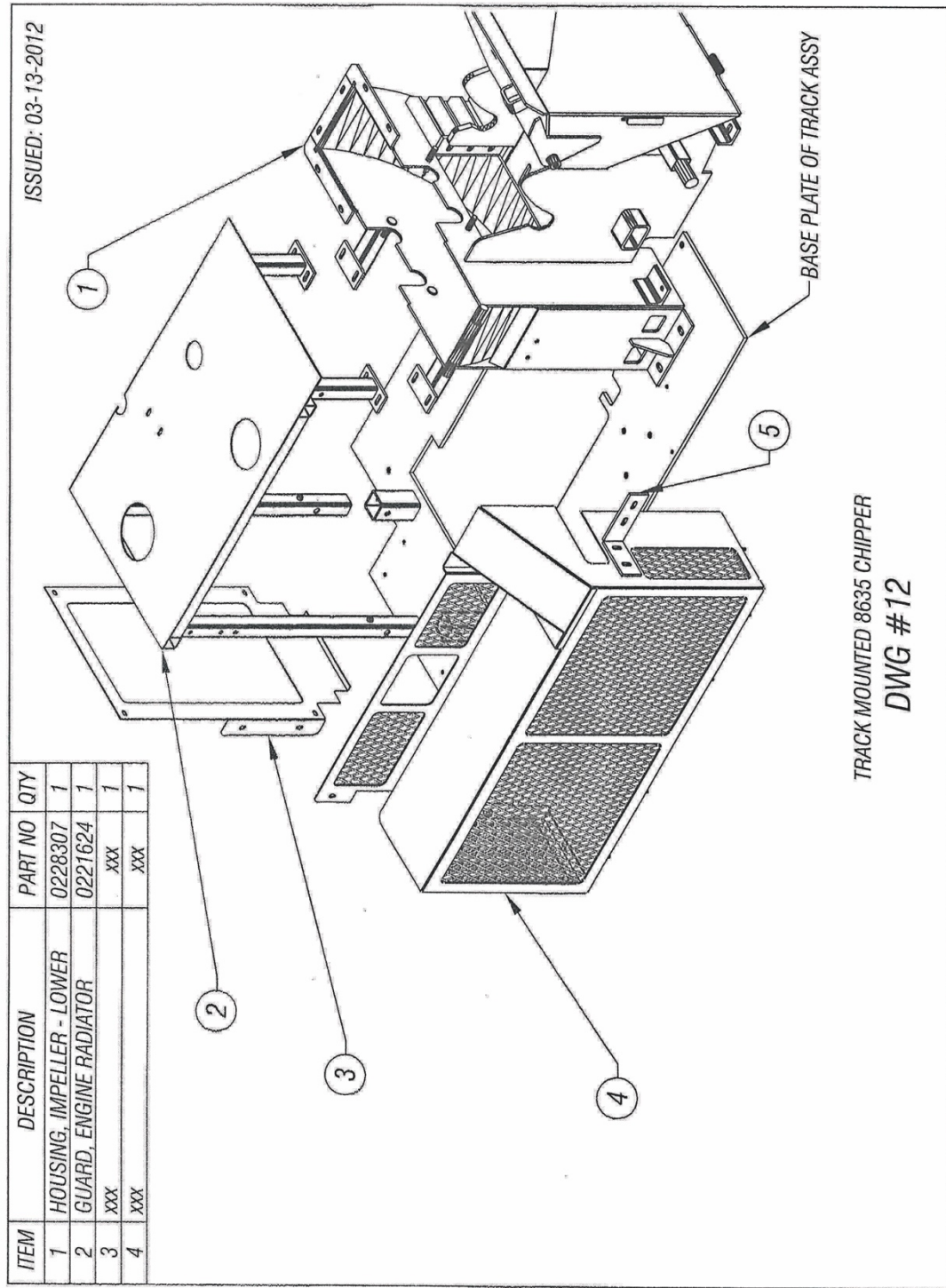


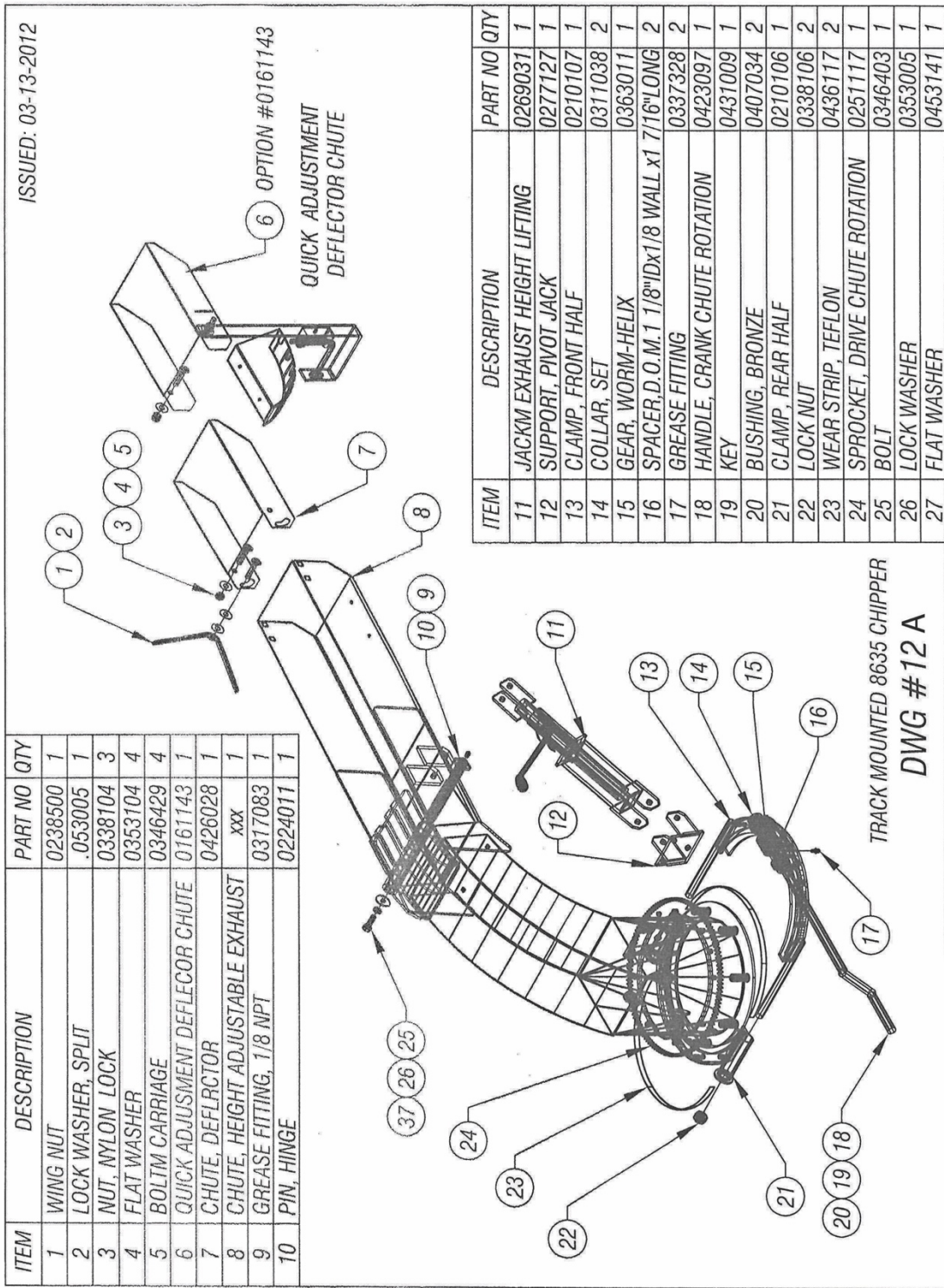
TRACK MOUNTED 8635 CHIPPER
DWG #8A





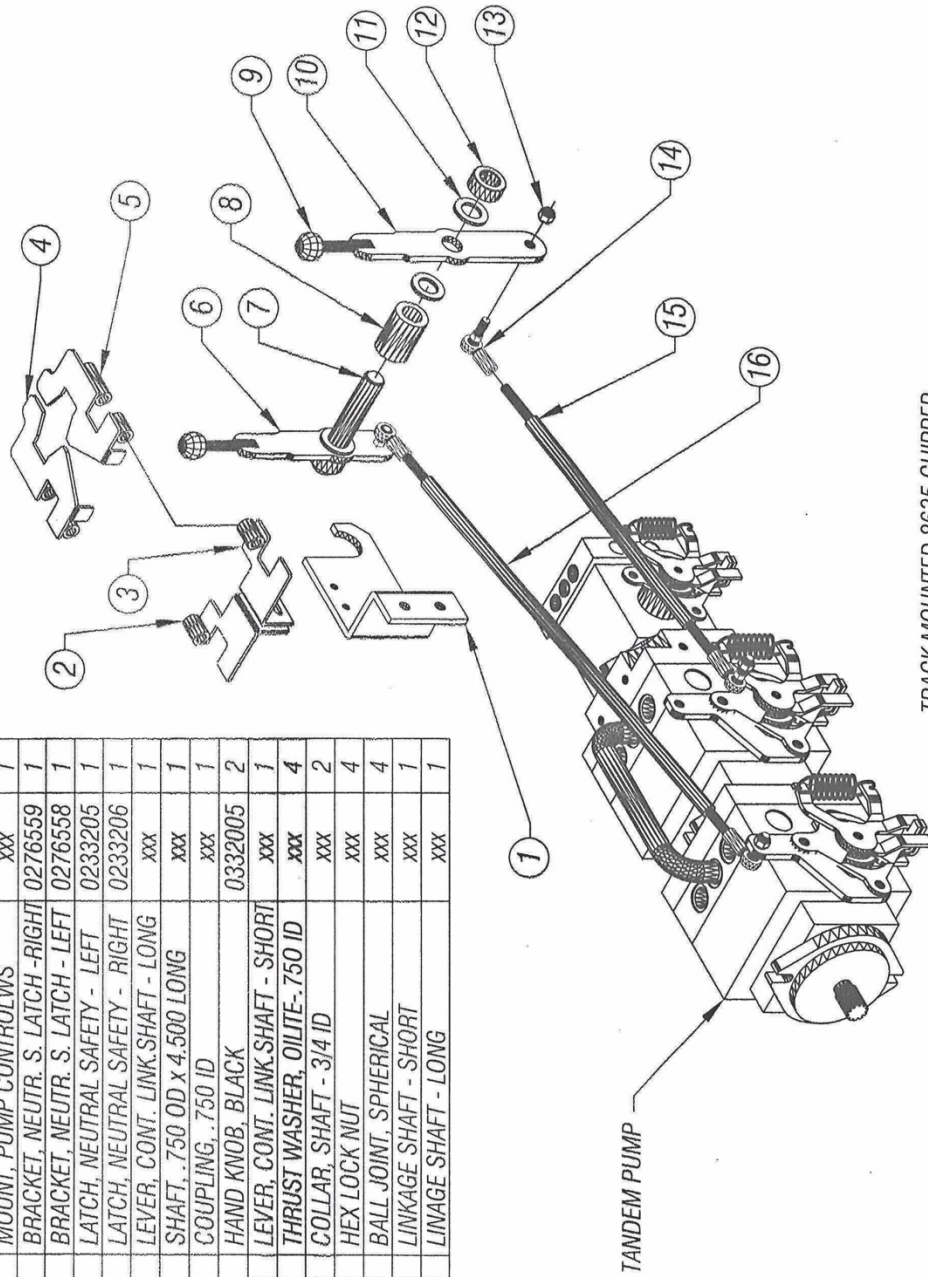




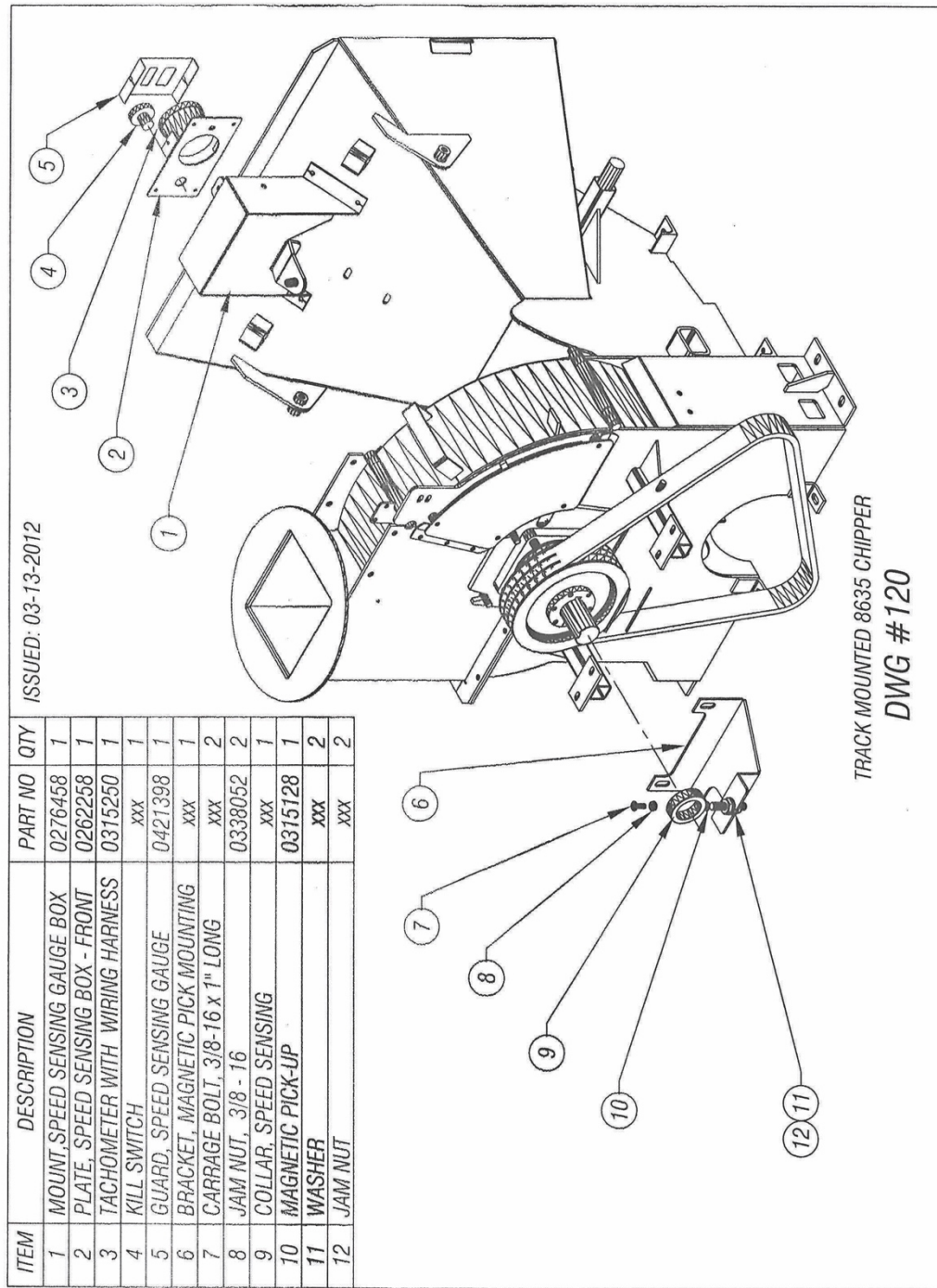


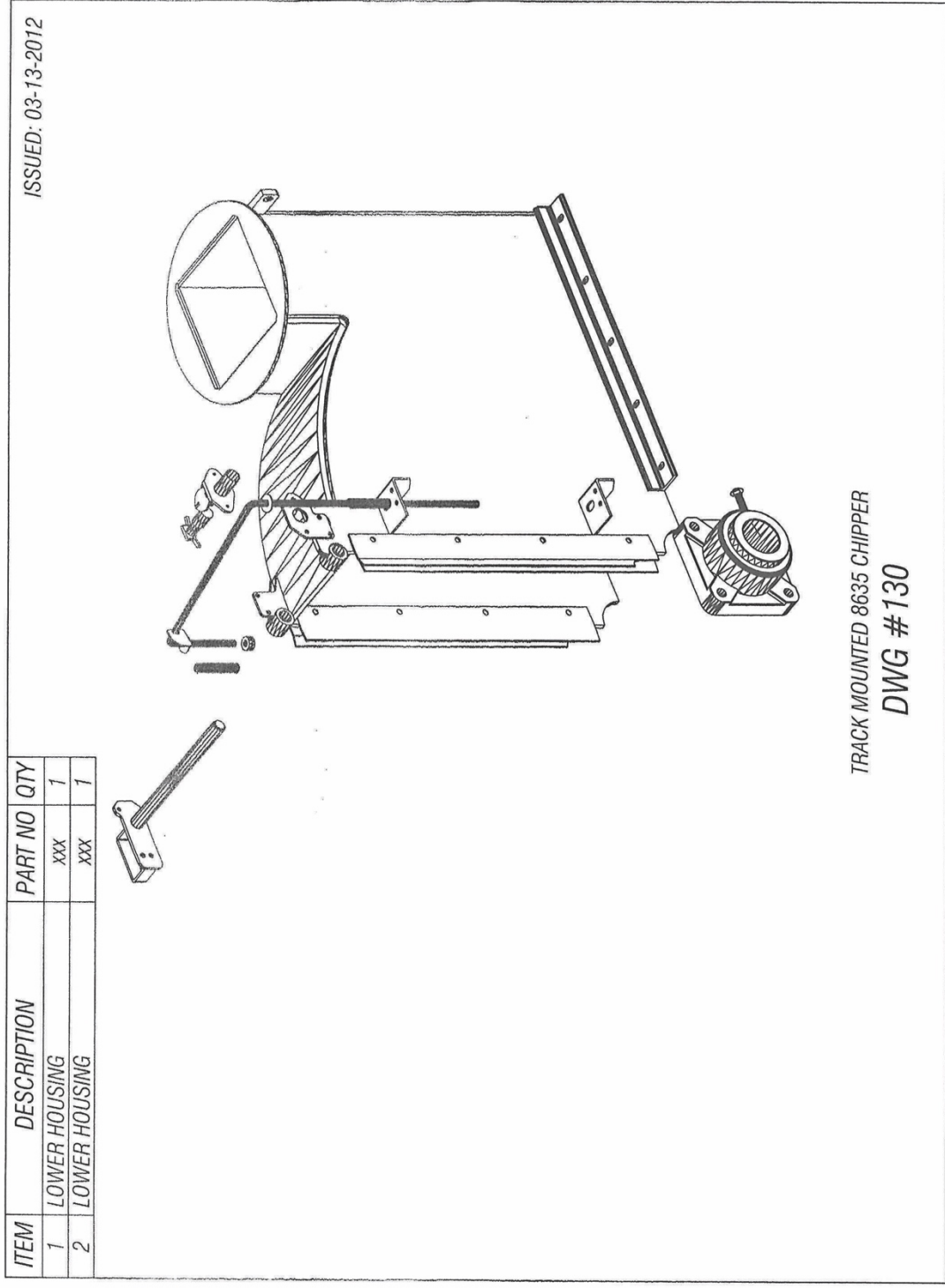
ISSUED: 03-13-2012

ITEM	DESCRIPTION	PART NO	QTY
1	MOUNT, PUMP CONTROLWS	xxx	1
2	BRACKET, NEUTR. S. LATCH - RIGHT	0276559	1
3	BRACKET, NEUTR. S. LATCH - LEFT	0276558	1
4	LATCH, NEUTRAL SAFETY - LEFT	0233205	1
5	LATCH, NEUTRAL SAFETY - RIGHT	0233206	1
6	LEVER, CONT. LINK SHAFT - LONG	xxx	1
7	SHAFT, .750 OD x 4.500 LONG	xxx	1
8	COUPLING, .750 ID	xxx	1
9	HAND KNOB, BLACK	0332005	2
10	LEVER, CONT. LINK SHAFT - SHORT	xxx	1
11	THRUST WASHER, OILITE-.750 ID	xxx	4
12	COLLAR, SHAFT - 3/4 ID	xxx	2
13	HEX LOCK NUT	xxx	4
14	BALL JOINT, SPHERICAL	xxx	4
15	LINKAGE SHAFT - SHORT	xxx	1
16	LINKAGE SHAFT - LONG	xxx	1



TRACK MOUNTED 8635 CHIPPER
DWG #13





WARRANTY POLICY - OTHER THAN GREENS ROLLERS

Please remember to complete and return your Warranty Card and Dealer Delivery Report. Warranty Claims will not be considered if your Warranty Card and Dealer Delivery Report has not been returned to Salsco.

Your Salsco Commercial or Turf Equipment product is a commercial type product and is normally manufactured and sold for commercial or industrial use. **Salsco will, for the original purchaser, for one (1) year from the date of purchase (90 days if used for rental purposes) repair or replace, free of charge, any SALSCO part or parts found to be defective in material, workmanship or both.** Any transportation or shipping charges will be borne by the purchaser. If, during the warranty period stated above, the product does not function properly due to defect, simply contact Salsco and follow the Warranty Procedures included in this manual.

This warranty **does not** include:

- Incidental or consequential damages and is exclusive of any implied warranties.
- Normal maintenance parts, including, but not limited to hoses, chains, belts, filters, lubricants, etc.
- Parts or components, which are covered under the original manufacturer warranty, including, but not limited to engines, pumps, and motors.

WARRANTY PROCEDURE

In order for Salsco to consider your warranty claims in a timely manner you must follow the simple procedures listed below:

MACHINE OR PART FAILURE

- Call our service department for helpful instruction on how to correct or repair the problem. Preventive maintenance will also be suggested.
- When ordering parts for Warranty issues, you **MUST** retain possession of the old parts in question until notified with respect to returning the parts to Salsco or other disposition.
- Warranty Claims **MUST** be filed within 30-days from completion of the work performed. Contact our office for an electronic warranty claim form.
- Fill in all information requested on warranty claim form, a copy of which is included in this manual, (date of purchase, company name, address, etc.). List all parts used. Make sure part numbers are correct. You can obtain these from your manual. (include good description of problem; i.e. "leaking from spool" rather than "leaking").
- It is our goal to consider and reach a disposition on each Warranty Claim within 30-days from the date that it is received. Therefore it is important that you respond promptly to any request for further information. Claims with no response to inquiries will be closed as **"denied for lack of response"** 90-days from the date of request.
- Email, Fax or Send Warranty Claim form to our Warranty Department. – **Warranty on parts most often requires return of the parts that were replaced.** **DO NOT DISCARD OLD PARTS UNTIL YOU HAVE RECEIVED A DETERMINATION AS TO WHETHER THESE PARTS MUST BE RETURNED.**
- Our Warranty Department will contact and instruct you on how to return the Parts to Salsco on an RA #. Returns **MUST** be made within 30-Days from issuance of RA #. **FREIGHT CHARGES ON RETURN OF PARTS IS THE RESPONSIBILITY OF THE CUSTOMER.** Normal pre-delivery adjustments are not covered under warranty. Labor Warranties are based on reasonable time allowances as determined by Salsco, Inc. **TRAVEL TIME IS NOT REIMBURSED UNDER THE WARRANTY POLICY.**
- Be sure to put the RA form inside the box that you are shipping back; also be sure to put on the outside of the box "Return of Goods" and the RA #.
- Ship returns via a traceable method such as UPS Ground Service. Be sure that the shipment is insured for the appropriate value. If uninsured parts are lost, we cannot issue a credit.

PLEASE NOTE: ***Warranty forms should be filled out completely.***

PREVENTIVE MAINTENANCE IS YOUR BEST INSURANCE AGAINST EQUIPMENT FAILURE. BE SURE TO READ THIS MANUAL, ESPECIALLY THE MAINTENANCE, OPERATING AND CAUTION SECTIONS.

**SALSCO, INC., 105 Schoolhouse Rd.
Cheshire, CT 06410
800-872-5726, 203-271-1682
203-271-2596 (Fax)
sales@salsco.com, www.salsco.com**

SALSCO WARRANTY CLAIM FORM

SALSCO, INC. 105 SCHOOLHOUSE RD. CHESHIRE, CT 06410		PHONE: 203-271-1682, 800-872-5726 FAX: 203-271-2596 EMAIL: f.carrington@salsco.com WEB: www.salsco.com	
END OWNER		PHONE:	
NAME:		FAX:	
EMAIL:			
ADDRESS:			
PURCHASED FROM:		PHONE:	
NAME:		FAX:	
EMAIL:			
ADDRESS:			
EQUIP/WARRANTY INFO: (MUST BE COMPLETE)			
PURCHASE DATE:		INV #:	DATE FAILED:
MODEL #:	SERIAL #		REPAIR DATE:
HRS USED:			
WARRANTY CLAIM/WORK ORDER #			
WAS A SALSCO RETURN AUTH. # ISSUED FOR REPAIRS OR RETURN OF PARTS: YES NO			
IF YES, RA #:			
PROBABLE CAUSE OF FAILURE:			

SALSCO WARRANTY CLAIM FORM - Continued

WORK PERFORMED/COMMENTS ON REPAIR:				
SHOP LABOR RATE:		SUBMITTED BY:		
TOTAL LABOR HRS TO REPAIR:		PRINTED NAME:		
SALSCO PART #: DESCRIPTION:	QTY	PRICE EACH	TOTAL	INVOICE #:
<p>FILL IN ALL INFORMATION REQUESTED ON WARRANTY CLAIM FORM. INCOMPLETE FORMS CANNOT BE PROCESSED & WILL BE RETURNED. LIST ALL PARTS USED. MAKE SURE PART NUMBERS ARE CORRECT. ANY PARTS THAT YOU BELIEVE TO BE DEFECTIVE OR ANY PARTS THAT BREAK SHOULD BE RETAINED FOR POSSIBLE INSPECTION UNTIL AFTER THE WARRANTY HAS BEEN PAID OR PART HAS BEEN RETURNED. INV. # NEEDS TO BE INCLUDED ON WARRANTY CLAIM.</p>				
OFFICE USE ONLY				
DATE REC'D:	DLR. DEL REPORT ON FILE: YES NO			
CUST ID:	WARRANTY CLAIM ON FILE: YES NO			
SALSCO WC:	PARTS TOTAL:			
SALSCO RA:	LABOR TOTAL:			
DATE APPROVED:	TOTAL APPROVED:			
DATE REJECTED:	REJECTED DATE:			
PROCESSED BY:	REASON:			

SERIAL # _____	MODEL NO. _____
SALSCO LIMITED WARRANTY CARD	
1. DATE PURCHASED: _____	
2. PURCHASER: _____	
3. PURCHASER ADDRESS: _____ _____	
4. EMAIL ADDRESS: _____	
5. DEALER: _____	
6. DEALER ADDRESS: _____	
7. WILL THIS EQUIPMENT BE USED COMMERCIALY? <input type="checkbox"/> YES <input type="checkbox"/> NO	
8. DID DEALER SERVICE THIS EQUIPMENT AND INSTRUCT YOU IN ITS CARE AND SAFE OPERATION ? <input type="checkbox"/> YES <input type="checkbox"/> NO	
9. DID YOU RECEIVE AN "OPERATION & SERVICE MANUAL" AND SAFETY PAMPHLET? <input type="checkbox"/> YES <input type="checkbox"/> NO	
NOTICE IMPORTANT: THIS CARD MUST BE FILLED OUT COMPLETELY AND MAILED TO THE FACTORY WITHIN 10 DAYS OF PURCHASE DATE, OR YOUR LIMITED WARRANTY WILL BE VOIDED.	SIGNED _____ Purchaser
WHITE - DEALER	YELLOW - OWNER
CARD - FACTORY	

SALESMAN ID # _____

SALES MANAGER'S NAME _____

Salsco, Inc.		105 School House Rd. Cheshire, CT 06410 203-271-1682		sales@salsco.com www.salsco.com
800-872-5726 203-271-2596 (Fax)				
DEALER DELIVERY REPORT				
MODEL _____		SERIAL NO _____		
DEALER _____		CITY _____	STATE _____	ZIP _____
PURCHASER (Last Name or Company) (First Name) (Middle Name)		ADDRESS _____	CITY _____	STATE _____ ZIP _____
<p>The undersigned dealer warrants that the above-described machine was carefully inspected, adjusted and prepared for delivery before delivery to the purchaser; that both the operation and maintenance of the machine were explained to the purchaser; and that a copy of the Owner's Instruction Manual were given to the purchaser and his attention called to Our Warranty and any operating instructions included in the manual and caution notes.</p> <p>_____ Date Dealer</p> <p>_____ Sign By</p> <p>_____ Phone</p>		<p>The undersigned purchaser certifies that the operation and maintenance of the above-described machine have been explained to him; acknowledges receipt of a copy of the Owners's Instruction Manual and Our Warranty Policy printed in said Instruction Manual and Caution Notes. I also understand that it is my responsibility to explain and make Salsco manuals available to new operators.</p> <p>_____ Date Purchaser</p> <p>_____ Sign By</p> <p>_____ Phone</p> <p>_____ Email</p>		

FACTORY COPY WHITE - DEALER'S COPY YELLOW - OWNER'S COPY PINK

SERVICE RECORD

If kept properly, this schedule will help track problems in the future.

[illegible]

MODEL # _____ S/N _____

DATE PURCHASED: _____