

**Quality of Workmanship  
Innovative Design  
Built to Last!**

**Salsco, INC.**  
LEADER BY DESIGN



## Track Chippers Models 8635TK & 8637TK



---

### MANUFACTURER OF OUTDOOR POWER EQUIPMENT

Products for Turf & Lawncare, Rental, Construction, Tree Care, Wood Processing, Nursery & Farm Industries

3-1/2" - 18" Capacity, Gas, Diesel, & PTO Wood/Brush Chippers - Slab Chippers  
Gas, Electric & Tow Behind Rollers - Tranz-Former Roller - CRV Core Recovery Vehicle  
Mini-Paver - Mini-Track Paver - Cobra Curbers - Scorpion Router - Concrete Paver  
Chipper Shredder Vacuums - Tailgate & Truckloader Vacuums  
9 cu. yds. - 50 cu. yds. Per Hour, Electric, PTO & Diesel Powered Shaving Mills

**Salsco, INC.**  
LEADER BY DESIGN

105 Schoolhouse Road  
Cheshire, CT 06410 U.S.A.  
800-872-5726 (Toll Free), 203-271-1682, 203-271-2596 (Fax)  
[www.salsco.com](http://www.salsco.com), [sales@salsco.com](mailto:sales@salsco.com)

**TABLE OF CONTENTS**

**TRACK CHIPPER, Models 8635TK & 8637TK**

COVER & TABLE OF CONTENTS.....Pages 1 – 2

STATEMENT OF FACT ..... Page 3

SPECIFICATIONS & FEATURES .....Page 4

SAFETY & OPERATING INSTRUCTIONS .....Pages 5 – 6

TORQUE CHART .....Page 7

PARTS DIAGRAMS .....Pages 8 - 25

SERVICE SCHEDULE LOG .....Page 26

**SALSCO, INC.**  
105 Schoolhouse Road  
Cheshire, CT 06410 USA  
800-872-5726, 203-271-1682  
203-271-2596 (Fax)  
[www.salsco.com](http://www.salsco.com), [sales@salsco.com](mailto:sales@salsco.com)

## **STATEMENT OF FACT**

You have just purchased the highest quality, most dependable, chipper on the market today. This unit has the ability to meet exact standards and perform for years with minimum downtime. **HOWEVER**, it cannot read nor will it understand this manual no matter how long you leave it on top of the machine.

It is your responsibility to read and understand this manual; it is also your responsibility to be certain this information is passed along to anyone who is expected to operate this equipment. Should you choose not to read, understand and pass along the information provided you, please expect equipment failure and possible injuries to persons around this equipment.

For the safety of the operator, it is imperative that this manual is carefully read and understood.

Once you have read this manual, it is your responsibility to be sure that all new operators read and understand this manual, especially all cautions stated.

As a manufacturer of equipment, we have a responsibility to design a safe piece of equipment. NOTE: The important safeguards and instructions in this manual are not meant to cover all possible conditions and situations that may occur. It must be understood that common sense, caution, and care are factors, which cannot be built into any product. These factors must be supplied by the person(s) caring for and operating this equipment.

**ONLY YOU CAN PREVENT ACCIDENTS!**

## SPECIFICATIONS & FEATURES

<b>ENGINE OPTION:</b>	37HP Briggs & Stratton, E.F.I. gas, electric start.
<b>FUEL TANK:</b>	7" x 31-7/8" x 22" steel tank. 20.5 gallon capacity, with lockable filler cap with dip stick.
<b>BATTERY:</b>	12 volt, CCA 650, automotive type, lockable box.
<b>CLUTCH:</b>	Centrifugal clutch, size 6 type P
<b>EXHAUST CHUTE:</b>	360° hand crank, height adjustable exhaust chute with easy adjust exhaust directional flap.
<b>INFEED OPENING:</b>	6" high x 12" wide opening at the infeed.
<b>INFEED TRAY:</b>	Extra wide, 57" wide x 33" high, 1/4" thick steel plate sides, with fold down infeed tray. Control bar positioned at top of infeed tray to control movement of the feed roll. High speed, low speed, neutral & reverse.
<b>FEED ROLL:</b>	One (1), 7" long x 12" diameter, weighted, replaceable blades, fully welded.
<b>IMPELLER HOUSING:</b>	1/4" thick steel, impeller housing is vented to provide more air flow for chip exhaust. Electric safety lock.
<b>IMPELLER:</b>	Fully balanced, 1" thick x 26" diameter steel impeller with four (4) welded and gusseted exhaust paddles. 200 lbs. (Approximately)
<b>CHIP BLADES:</b>	Four (4), 1/2" thick x 5" long x 4" wide, double-sided.
<b>BED KNIVES:</b>	Two (2), one horizontal, one vertical. Both are 1" thick steel, replaceable, sharpenable & adjustable
<b>BEARINGS:</b>	4-bolt, heavy duty, cast iron, greaseable & self-centering.
<b>HYDRAULIC COMPONENTS</b>	<b>Hoses:</b> SAE JIC hose ends & fittings. 3,000 P.S.I. working, 12,000 P.S.I. burst. <b>Motors</b> - Two (2), Char-Lynn 29.4 displacement, one (1) Char-Lynn 17.9 displacement. <b>Pump</b> - Hydro-Gear, variable speed piston type tandem pump.
<b>HYDRAULIC TANK</b>	7" x 18" x 10-7/8" steel tank. 4.6 gallon capacity, with lockable filler cap with dip stick.
<b>FRAME:</b>	Single piece welded box construction, 3/8" plate.
<b>TRACKS:</b>	Two (2), Bridgestone rubber tracks.
<b>OPTIONS:</b>	Speed sensing.
<b>PAINT:</b>	Orange, polyester powder coat paint provides excellent outdoor weatherability and offers protection against ultraviolet discoloration. All parts painted separately.
<b>GUARDS/DECALS:</b>	All moving parts guarded. Full set of safety decals.
<b>DIMENSIONS:</b>	Width: 2' 9", Height: 7' 6", Weight: 3,960 lbs. (Approximately)
<b>SPECIFICATIONS - Transport Trailer</b>	
<b>AXLE:</b>	3,500 lb. Torflex axle, features an independent suspension, cushioned with rubber, providing a smooth, quiet ride with no transfer of road shock from one wheel to the other.
<b>TIRE/WHEEL ASSEMBLIES:</b>	Two (2), ST225/80R16 LR "E", 10 Ply.
<b>TONGUE:</b>	2" x 3" x 1/4" wall, rectangular steel tube. Bolt on tongue bracket is 1/2" steel plate bracket with 1/4" gussets.
<b>HITCH:</b>	Adjustable height hitch. 2-5/16" ball or 3" pintle coupler.
<b>JACK:</b>	Side-wind swivel snap ring mount jack. 2,000lb. lift capacity.
<b>LOCKING PIN:</b>	Locking pin to accommodate 3" pintle coupler, welded to the chipper.
<b>FENDERS/LIGHTS:</b>	Extra heavy duty 1/4" thick diamond plate fenders with safety light guards. LED light package, D.O.T. approved.
<b>FRAME:</b>	Welded structural steel. 3" x 2" x 1/4" wall rectangular steel tube, continuous welds for strength and gusseted where needed.
<b>PAINT:</b>	Black, polyester powder coat paint provides excellent outdoor weatherability and offers protection against ultraviolet discoloration. All parts painted separately.
<b>DIMENSIONS:</b>	Width: 5' 9" Length: 10' Weight: 800 lbs. (Approximately) GVWR - 5,200 lbs.
<b>REV. 3/27/2020</b>	All Specifications and Options Subject to Change Without Notice

**BRUSH CHIPPERS**  
**ANSI Z133.1-2006**  
American National Standard for Arboricultural Operations  
Safety Requirements

**5.3 Brush Chippers**

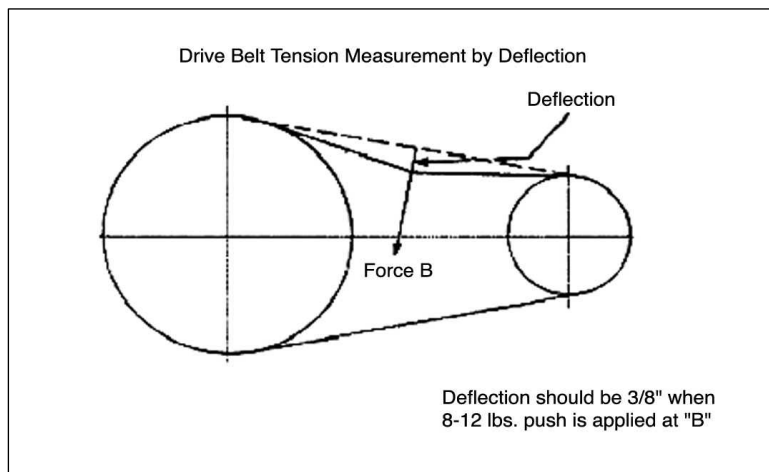
- 5.3.1 The items contained in section 5.1 shall always be included in the review of this section.
- 5.3.2 Access panels (for example, guards) for maintenance and adjustment, including discharge chute and cutter housing, shall be closed and secured prior to starting the engine of brush chippers. These access panels shall not be opened or unsecured until the engine and all moving parts have come to a complete stop (see Annex C, General Safety Procedures That Apply to All Tree Work).
- 5.3.3 Rotary drum or disc brush chippers not equipped with a mechanical infeed system shall be equipped with an infeed hopper not less than 85 inches (2.15 m) measured from the blades or knives to ground level over the center line of the hopper. Side members of the infeed hopper shall have sufficient height so as to prevent workers from contacting the blades or knives during operations.
- 5.3.4 Rotary drum or disc brush chippers not equipped with a mechanical infeed system shall have a flexible anti-kickback device installed in the infeed hopper to reduce the risk of injury from flying chips and debris.
- 5.3.5 Chippers equipped with a mechanical infeed system shall have a quick-stop and reversing device on the infeed system. The activating mechanism for the quick-stop and reversing device shall be located across the top, along each side, and close to the feed end of the infeed hopper within easy reach of the worker.
- 5.3.6 Vision, hearing, and/or other appropriate personal protective equipment shall be worn when in the immediate area of a brush chipper in accordance with section 3.4, Personal Protective Equipment.
- 5.3.7 Arborists, mechanics, and other workers shall not, under any circumstances, reach into the infeed hopper when the cutter disc, rotary drum, or feed rollers are moving.
- 5.3.8 When trailer chippers are detached from the vehicles, they shall be chocked or otherwise secured in place.
- 5.3.9 When in a towing position, chipper safety chains shall be crossed under the tongue of the chipper and properly affixed to the towing vehicle.
- 5.3.10 See section 8.6, Brush Removal and Chipping, for additional requirements.

**BRUSH REMOVAL AND CHIPPING**  
**ANSI Z133.1-2006**  
American National Standard for Arboricultural Operations  
Safety Requirements

**8.6 Brush Removal and Chipping**

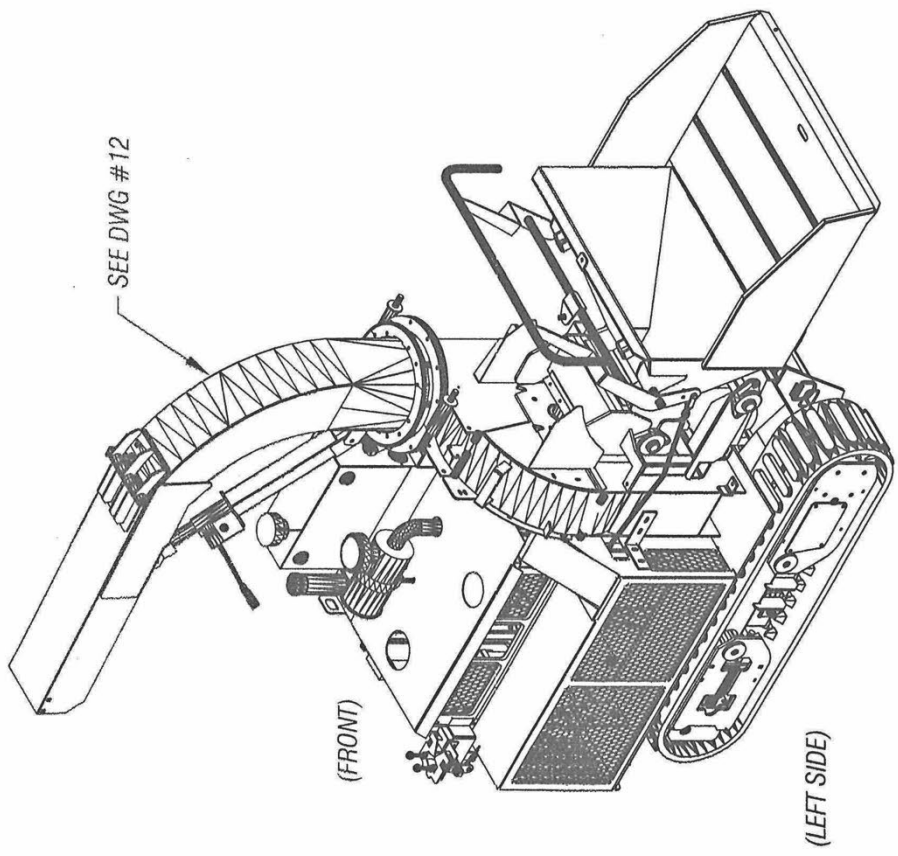
- 8.6.1 Traffic control around the jobsite shall be established prior to the start of chipping operations along roads and highways (see section 3.2, Traffic Control Around the Jobsite).
- 8.6.2 Brush and logs shall not be allowed to create hazards in the work areas.
- 8.6.3 To prevent an entanglement hazard, loose clothing, climbing equipment, body belts, harnesses, lanyards, or gauntlet-type gloves (for example, long-cuffed lineman's or welder's gloves) shall not be worn while operating chippers.
- 8.6.4 Personal protective equipment shall be worn when in the immediate area of chipping operations in accordance with section 3.4, Personal Protective Equipment, of this standard.
- 8.6.5 Training shall be provided in the proper operation, feeding, starting, and shutdown procedures for the chipper being used.
- 8.6.6 Maintenance shall be performed only by those persons authorized by the employer and trained to perform such operations.
- 8.6.7 Brush and logs shall be fed into chippers, butt or cut end first, from the side of the feed table center line, and the operator shall immediately turn away from the feed table when the brush is taken into the rotor or feed rollers. Chippers should be fed from the curb-side whenever practical.
- 8.6.8 The brush chipper discharge chute or cutter housing cover shall not be raised or removed while any part of the chipper is turning or moving. Chippers shall not be used unless a discharge chute of sufficient length or design is provided that prevents personal contact with the blades (see Annex C, General Safety Procedures That Apply to All Tree Work).
- 8.6.9 Foreign material, such as stones, nails, sweepings, and rakings, shall not be fed into chippers.
- 8.6.10 Small branches shall be fed into chippers with longer branches or by being pushed with a long stick.
- 8.6.11 Hands or other parts of the body shall not be placed into the infeed hopper. Leaning into or pushing material into infeed hoppers with feet is prohibited.
- 8.6.12 While material is being fed into the chipper infeed hopper chute, pinch points continually develop within the material being chipped and between the material and machine. The operator shall be aware of this situation and respond accordingly.
- 8.6.13 When feeding a chipper during roadside operations, the operator shall do so in a manner that prevents him or her from stepping into traffic or being pushed into traffic by the material that is being fed into the chipper.
- 8.6.14 When using a winch in chipper operations, the operator shall ensure that the winch cable is properly stored before initiating chipper operations.
- 8.6.15 Refer to section 5.3, Brush Chippers, for additional information.

BOLT SIZE	Thds Per Inch	SAE Grade 5	SAE Grade 8
1/4	20	10	14
	28	---	---
5/16	18	19	29
	24	---	---
3/8	16	33	47
	24	---	---
7/16	14	54	78
	20	---	---
1/2	13	78	119
	20	---	---
9/16	12	114	169
	18	---	---
5/8	11	154	230
	11	---	---
3/4	10	257	380
	10	---	---
7/8	9	382	600
	9	---	---
1	8	587	700
	8	---	---



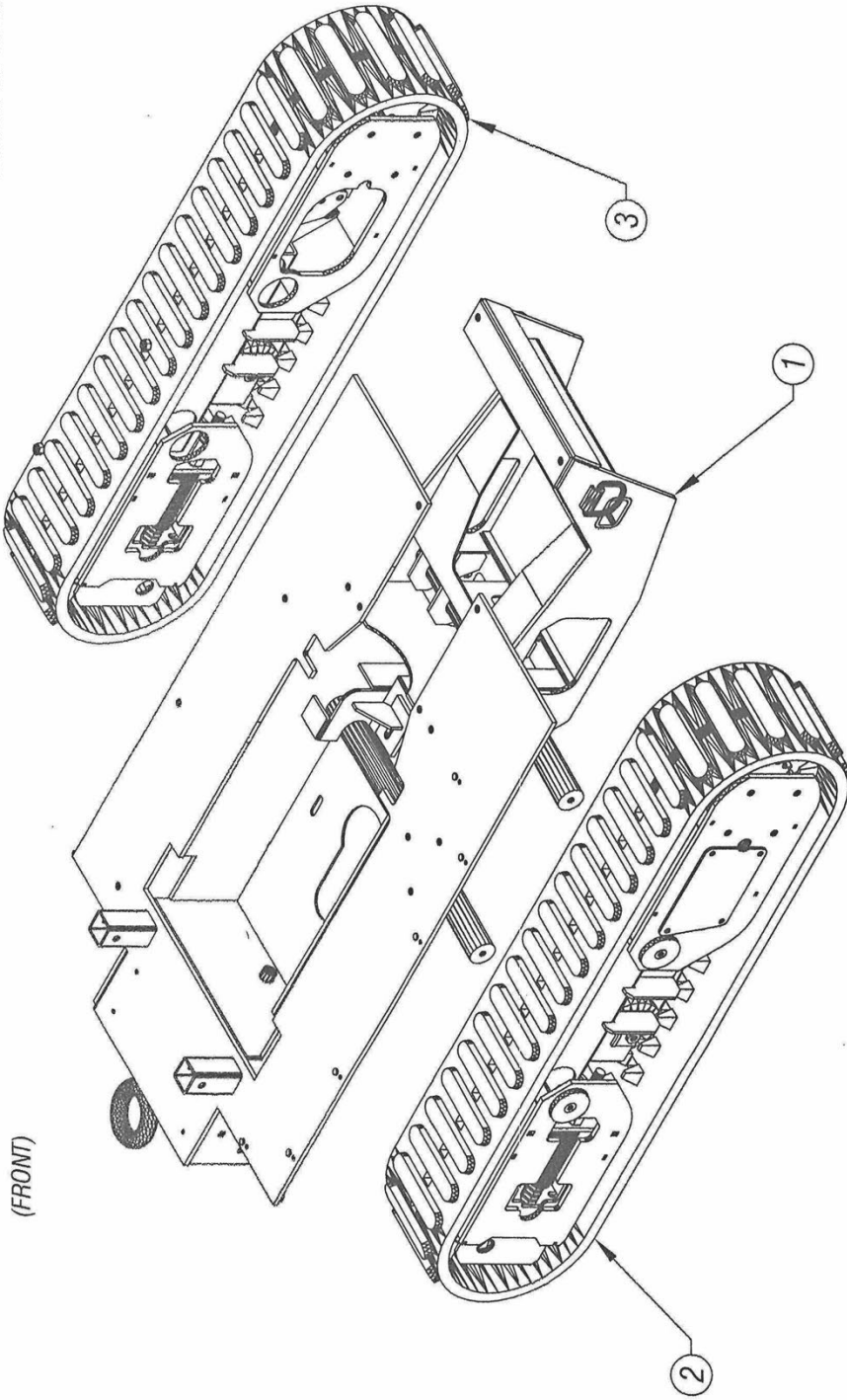
ISSUED: 03-13-2012

ITEM	DESCRIPTION	PART NO	QTY
	TRACK MOUNTED CHIPPER	0010175	



TRACK MOUNTED 8635 CHIPPER  
DWG #1

ISSUED: 03-13-2012



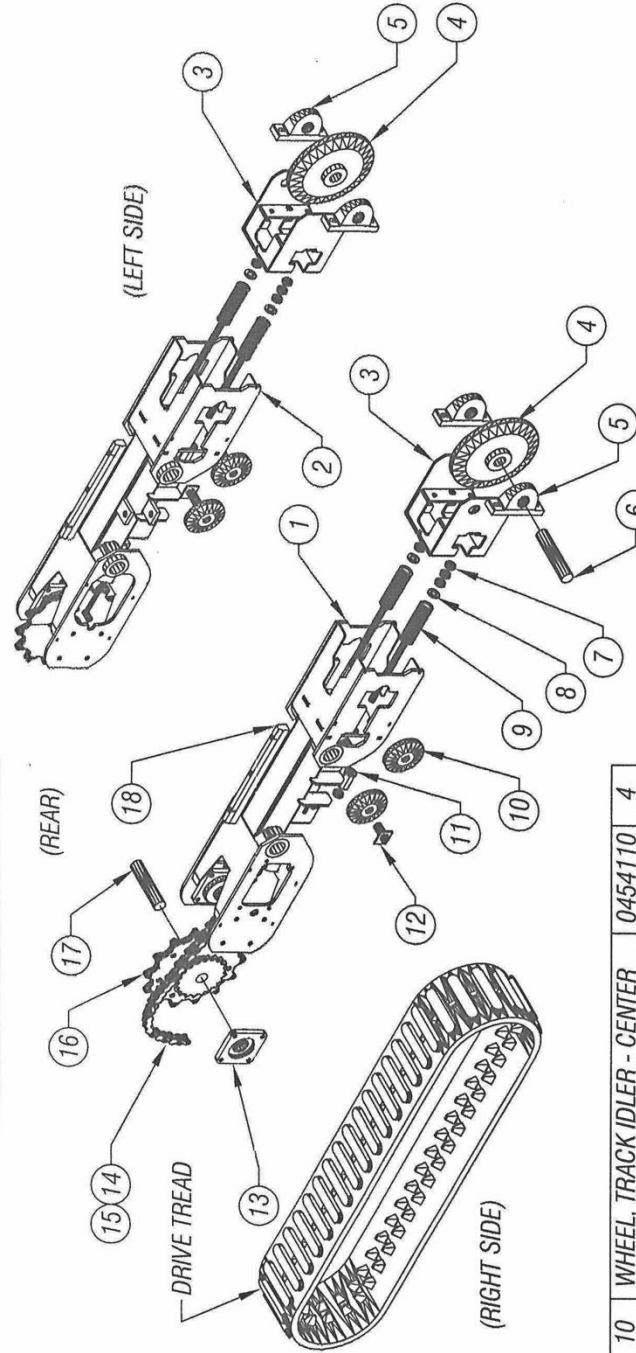
TRACK MOUNTED 8635 CHIPPER  
DWG #2

ITEM	DESCRIPTION	PART NO	ITEM
1	TRACK FRAME	0219513	1
2	LEFT SIDE TRACK ASSY	SEE DWG #3 & DWG #4	
3	RIGHT SIDE TRACK ASSY	SEE DWG #3 & DWG #4	

ISSUED:03-13-2012

14	DRIVE CHAIN, #80 x 33 PITCHES	0309079	2
15	MASTER LINK, #80 CHAIN	0309038	2
16	SPROCKET, TRACK DRIVE	0251171	2
17	SHAFT, DRIVE SPROCKET	0448326	2
18	GUIDE, TRACK DRIVE, UPPER	0422162	2

ITEM	DESCRIPTION	PART NO	QTY
1	FRAME, TRACK DRIVE - RIGHT	0219383	1
2	FRAME, TRACK DRIVE - LEFT	0219384	1
3	ADJUSTER, IDLER TENSION	0201029	2
4	WHEEL, TRACK IDLER - MAIN	0254104	2
5	BEARING, FOLLOW BLOCK	0303057	4
6	SHAFT, IDLER TRACK WHEEL	0448327	2
7	NUT HEX JAM - (3/4-10)	0338056	16
8	FLAT WASHER - (3/4 S.A.E.)	0353149	4
9	SPRING, COMPR. - (13 COIL)	0350044	4

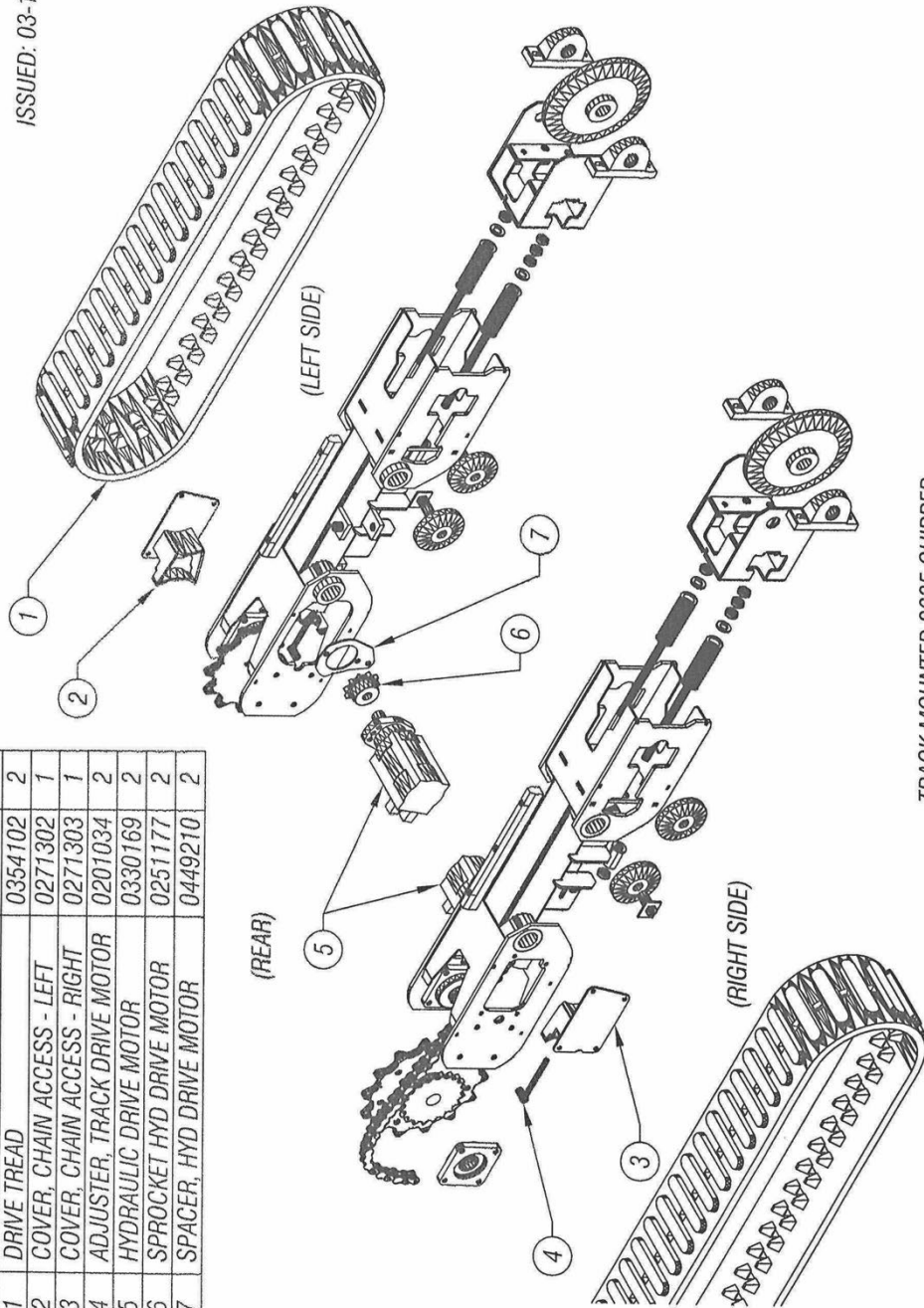


10	WHEEL, TRACK IDLER - CENTER	0454110	4
11	NUT, TRACK ADJUSTER COUPLING	0238506	4
12	TUBE, IDLER MOUNTING	0267429	4
13	BEARING, 4-BOLT FLANGED	0303002	4

TRACK MOUNTED 8635 CHIPPER  
DWG # 3

ISSUED: 03-13-2012

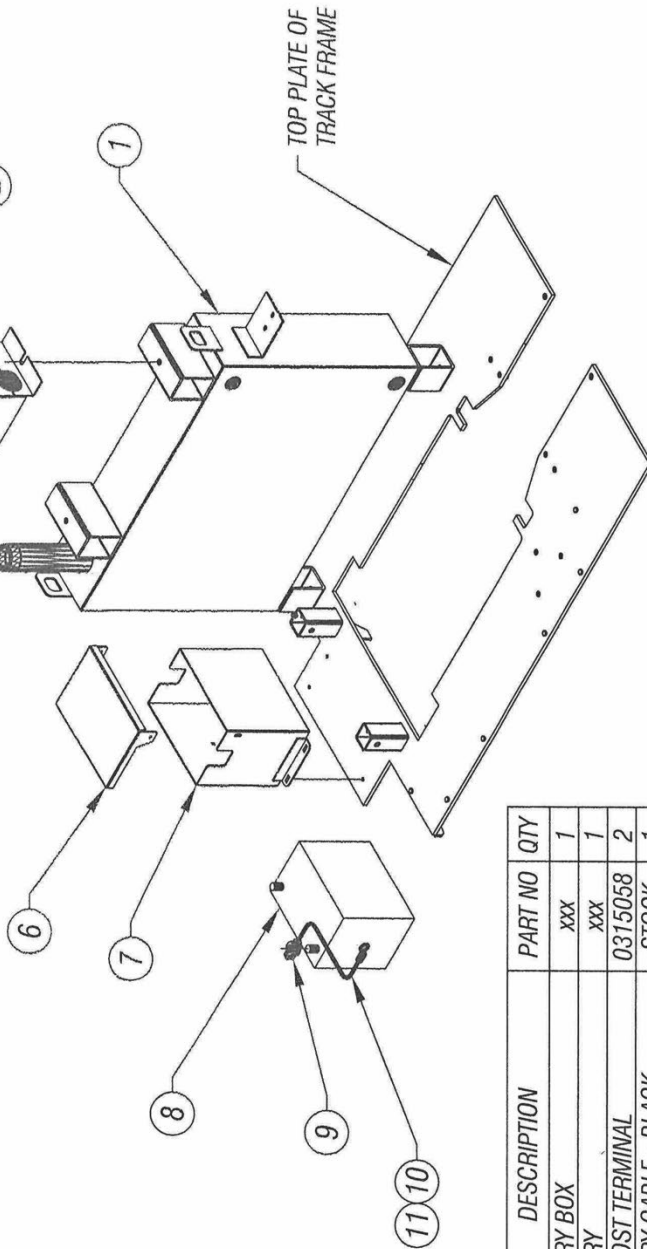
ITEM	DESCRIPTION	PART NO	QTY
1	DRIVE TREAD	0354102	2
2	COVER, CHAIN ACCESS - LEFT	0271302	1
3	COVER, CHAIN ACCESS - RIGHT	0271303	1
4	ADJUSTER, TRACK DRIVE MOTOR	0201034	2
5	HYDRAULIC DRIVE MOTOR	0330169	2
6	SPROCKET HYD DRIVE MOTOR	0251177	2
7	SPACER, HYD DRIVE MOTOR	0449210	2



TRACK MOUNTED 8635 CHIPPER  
DWG #4

ISSUED: 03-13-2012

ITEM	DESCRIPTION	PART NO	QTY
1	GAS TANK	xxx	1
2	HYDRAULIC TANK	xxx	1
3	CAP, FILLER	xxx	1
4	CAP, FILL LOCKING	0271024	1
5	CAP, FILLER	xxx	1
6	COVER, BATTERY BOX	xxx	1

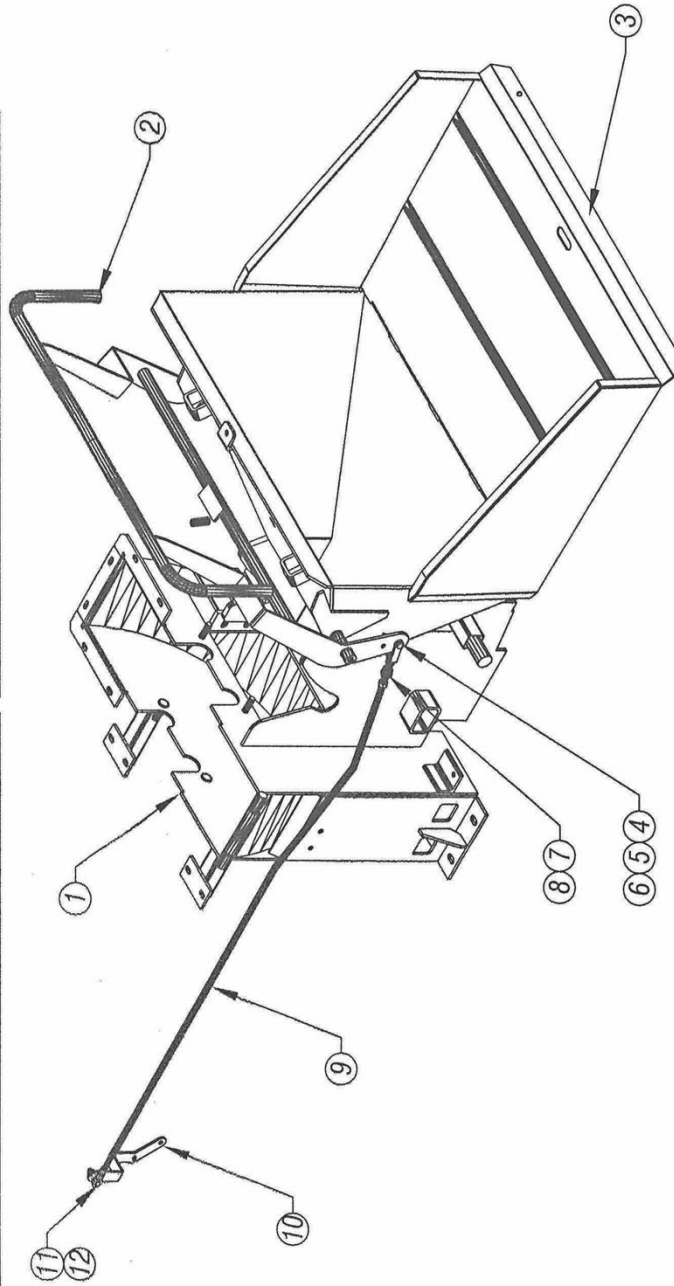


ITEM	DESCRIPTION	PART NO	QTY
7	BATTERY BOX	xxx	1
8	BATTERY	xxx	1
9	TOP POST TERMINAL	0315058	2
10	BATTERY CABLE - BLACK	STOCK	1
11	BATTERY CABLE - RED	STOCK	1

TRACK MOUNTED 8635 CHIPPER  
DWG #5

ITEM	DESCRIPTION	PART NO	QTY	ITEM	DESCRIPTION	PART NO	QTY
1	HOUSING, IMPELLER - LOWER	xxx	1	7	HOUSING, IMPELLER - LOWER	xxx	1
2	HOUSING, IMPELLER - LOWER	xxx	1	8	HOUSING, IMPELLER - LOWER	xxx	1
3	HOUSING, IMPELLER - LOWER	xxx	1	9	HOUSING, IMPELLER - LOWER	xxx	1
4	HOUSING, IMPELLER - LOWER	xxx	1	10	HOUSING, IMPELLER - LOWER	xxx	1
5	HOUSING, IMPELLER - LOWER	xxx	1	11	HOUSING, IMPELLER - LOWER	xxx	1
6	HOUSING, IMPELLER - LOWER	xxx	1	12	HOUSING, IMPELLER - LOWER	xxx	1

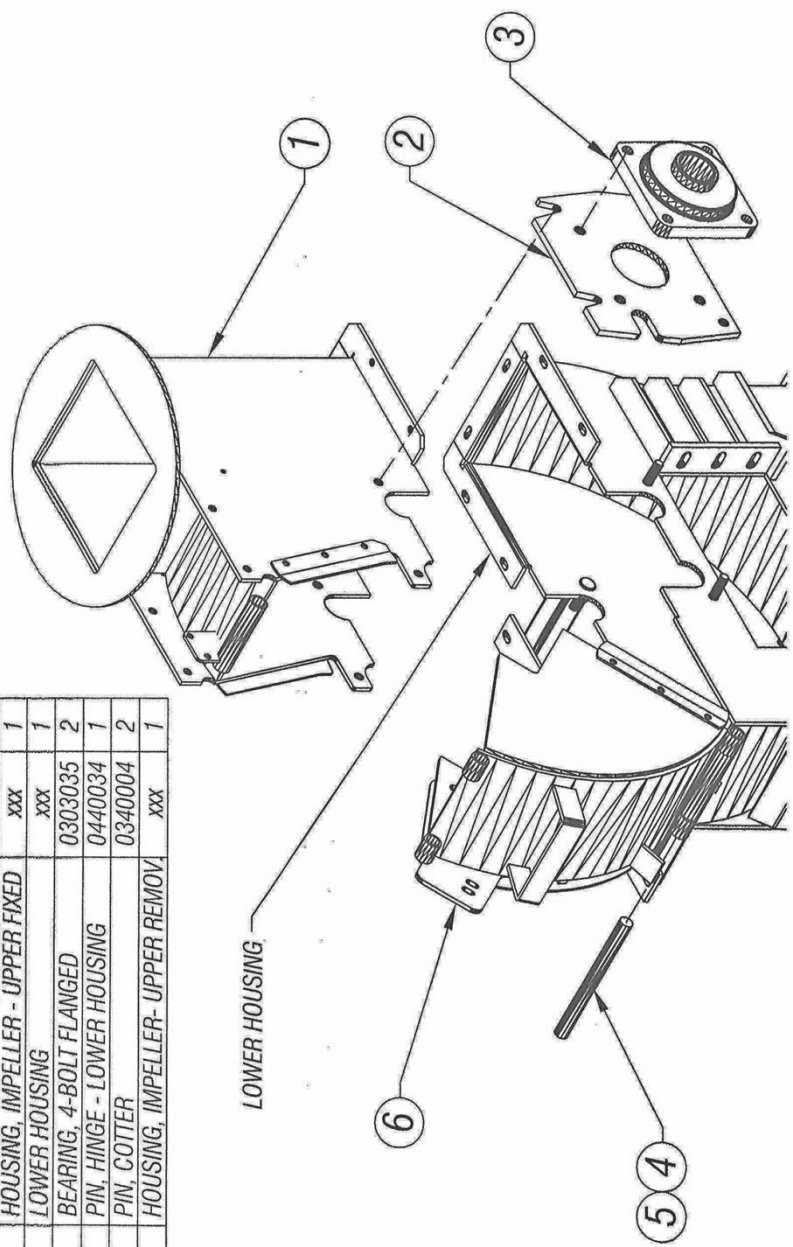
ISSUED: 03-13-2012



TRACK MOUNTED 8635 CHIPPER  
DWG #6

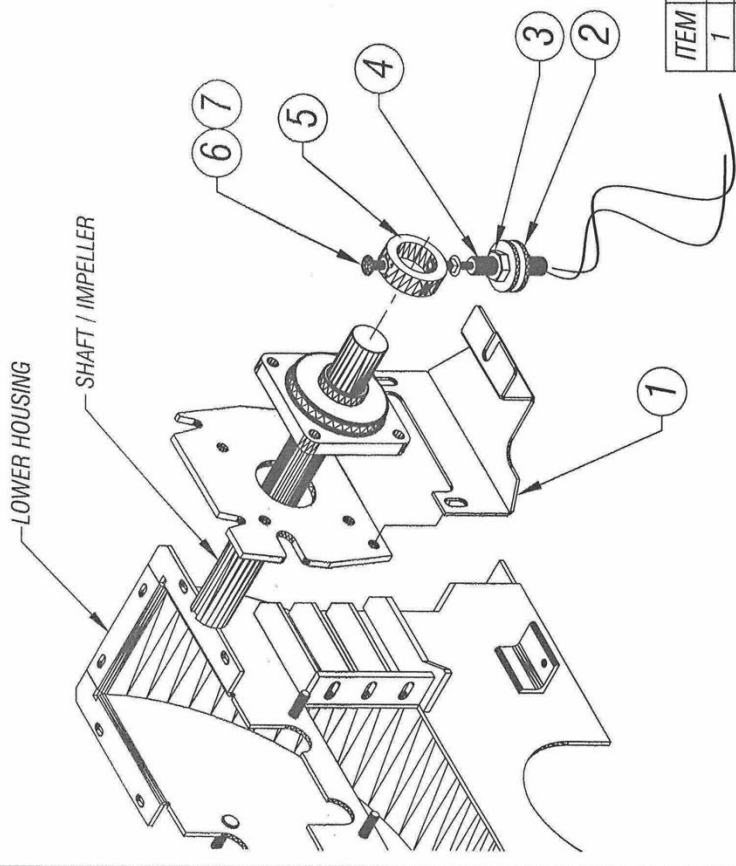
ISSUED: 03-13-2012

ITEM	DESCRIPTION	PART NO	QTY
1	HOUSING, IMPELLER - UPPER FIXED	xxx	1
2	LOWER HOUSING	xxx	1
3	BEARING, 4-BOLT FLANGED	0303035	2
4	PIN, HINGE - LOWER HOUSING	0440034	1
5	PIN, COTTER	0340004	2
6	HOUSING, IMPELLER- UPPER REMOV.	xxx	1



TRACK MOUNTED 8635 CHIPPER  
DWG #7

ISSUED: 12-18-2013



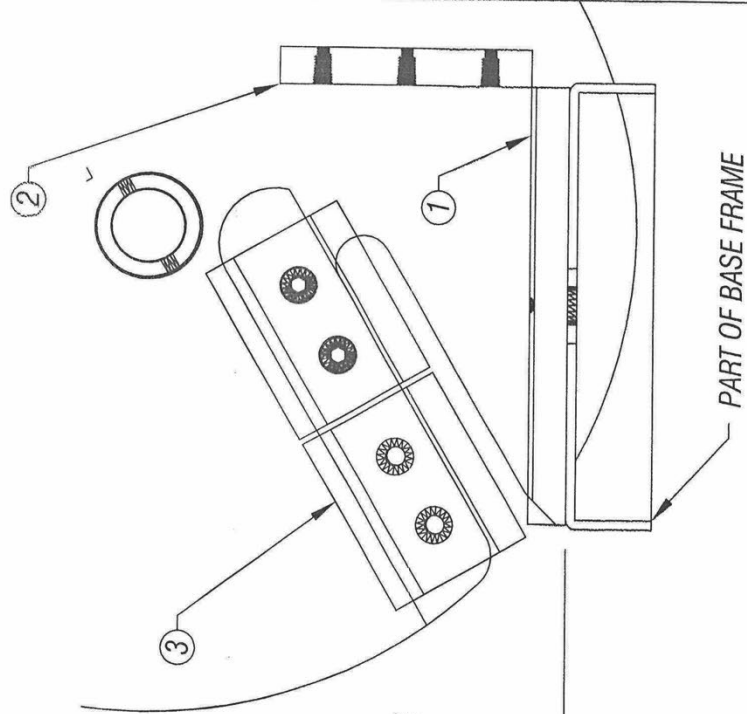
ITEM	DESCRIPTION	PART NO	QTY
1	BRACKET, MAG. PICK-UP MOUNTING	0488114	1
2	WASHER, FLAT	0353105	2
3	HEX NUT (.625-18)	0338045	2
4	MAGNETIC PICK-UP	0315128	1
5	COLLAR	xxx	1
6	BOLT, CARRIAGE .375-16 UNC x 1" LG	0346228	2
7	NUT, HEX JAM (.375-16 UNC)	0338052	2

SPEED SENSING OPTION #xxxxx  
 TRACK MOUNTED 8635 CHIPPER  
 DWG #7A



ITEM	DESCRIPTION	PART NO	QTY
1	HORIZONTAL BED KNIFE	xxx	1
2	VERTICAL BED KNIFE	xxx	1
3	CHIP BLADE	xxx	4

ISSUED: 03-13-2012



VERT. BED KNIFE

HORIZ. BED KNIFE

CHIP BLADE

.070 SPACE (FEELER GAUGE)  
CHIP BLADE TO VERTICAL &  
HORIZONTAL BED KNIVES

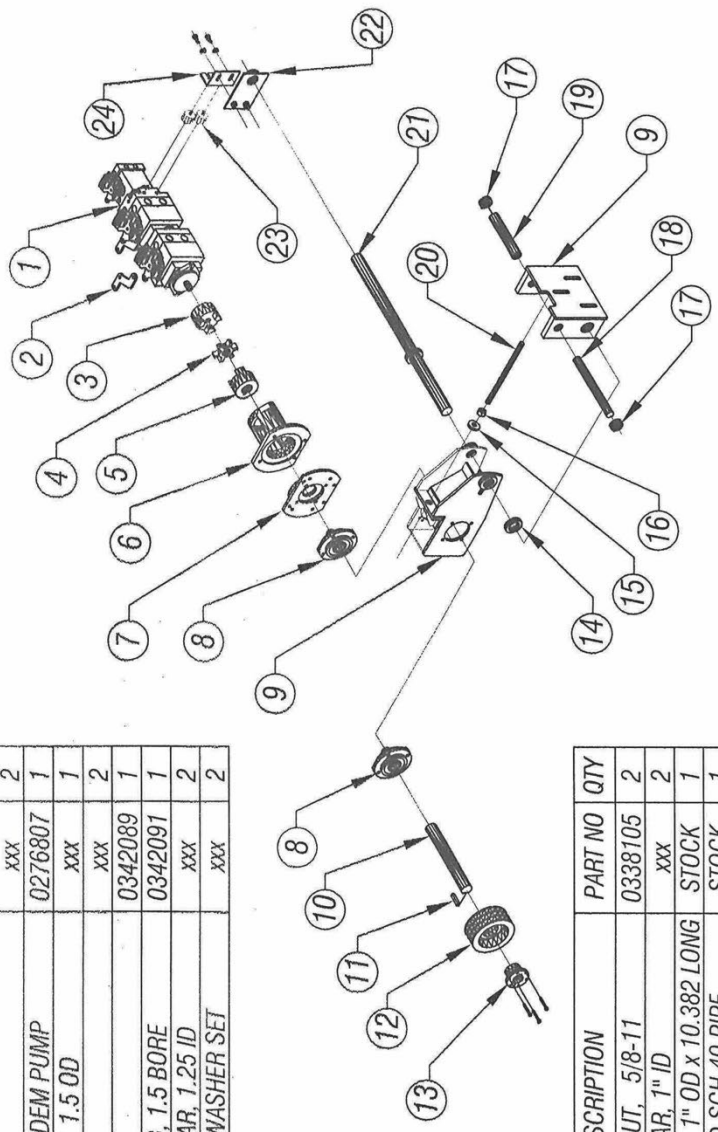
TRACK MOUNTED 8635 CHIPPER  
DWG #8A

ISSUED: 03-13-2012

ITEM	DESCRIPTION	PART NO	QTY
20	THREADED ROD, 5/8-11x11" LONG	STOCK	1
21	PIVOT SHAFT, CRS 1.5 OD x 28.25 LG	STOCK	1
22	PLATE, TANDEM PUMP	0290147	1
23	RUBBER MOUNT, VIBR. DAMPG	0376250	2
24	PUMP SUPPORT BRACKET	xxx	1

ITEM	DESCRIPTION	PART NO	QTY
1	TANDEM PUMP	xxx	1
2	LEVER, TANDEM PUMP	0433271	2
3	HUB, 17mm BORE (PUMP)	0313081	1
4	SPIDER COUPLING	0313004	1
5	HUB, 1" BORE	0313003	1
6	BELL HOUSING	0328059	1
7	MOUNT, TANDEM PUMP	0276807	1
8	BEARING,	xxx	2
9	MOUNT, TANDEM PUMP	0276807	1
10	JACK SHAFT, 1.5 OD	xxx	1
11	KEY	xxx	2
12	SHEAVE	0342089	1
13	SD BUSHING, 1.5 BORE	0342091	1
14	SHAFT COLLAR, 1.25 ID	xxx	2
15	SPHERICAL WASHER SET	xxx	2

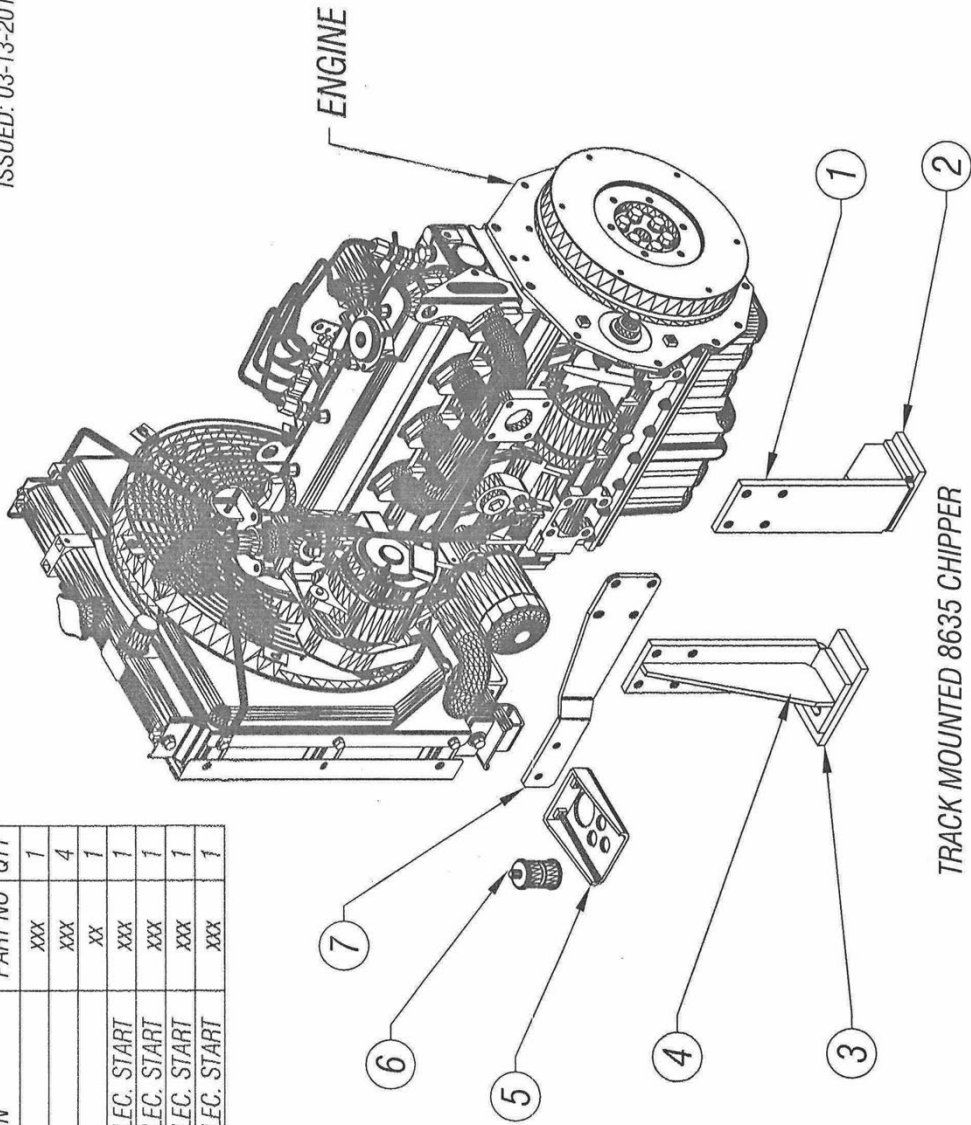
ITEM	DESCRIPTION	PART NO	QTY
16	HEX LOCK NUT, 5/8-11	0338105	2
17	SHAFT COLLAR, 1" ID	xxx	2
18	SHAFT, CRS 1" OD x 10.382 LONG	STOCK	1
19	SPACER, 1" ID SCH 40 PIPE	STOCK	1



TRACK MOUNTED 8635 CHIPPER  
DWG #9

ISSUED: 03-13-2012

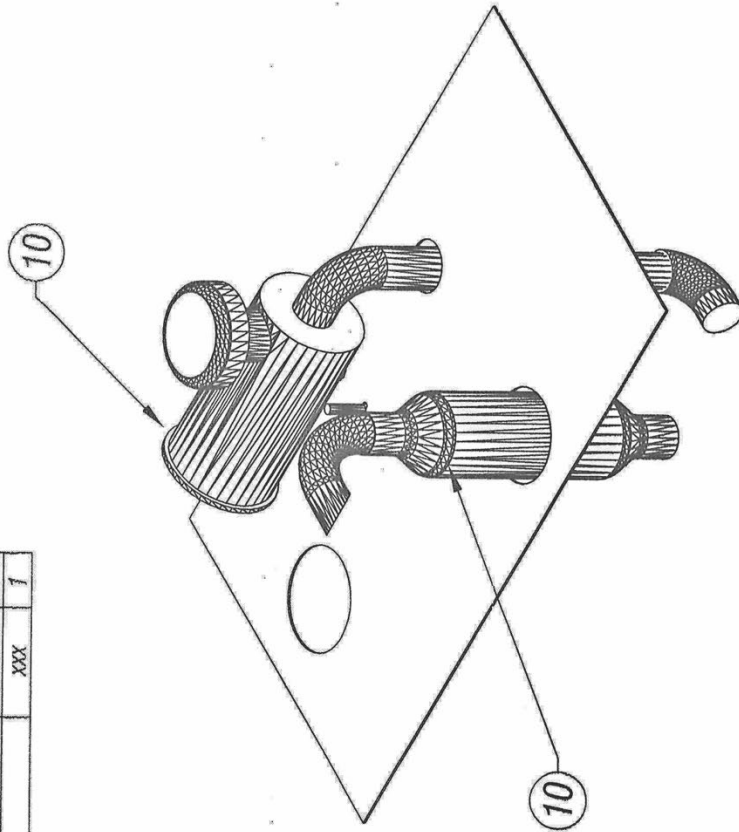
ITEM	DESCRIPTION	PART NO	QTY
1	xxx	xxx	1
2	xxx	xxx	4
3	xxx	xx	1
4	ENGINE, B&S 16HP ELEC. START	xxx	1
5	ENGINE, B&S 16HP ELEC. START	xxx	1
6	ENGINE, B&S 16HP ELEC. START	xxx	1
7	ENGINE, B&S 16HP ELEC. START	xxx	1



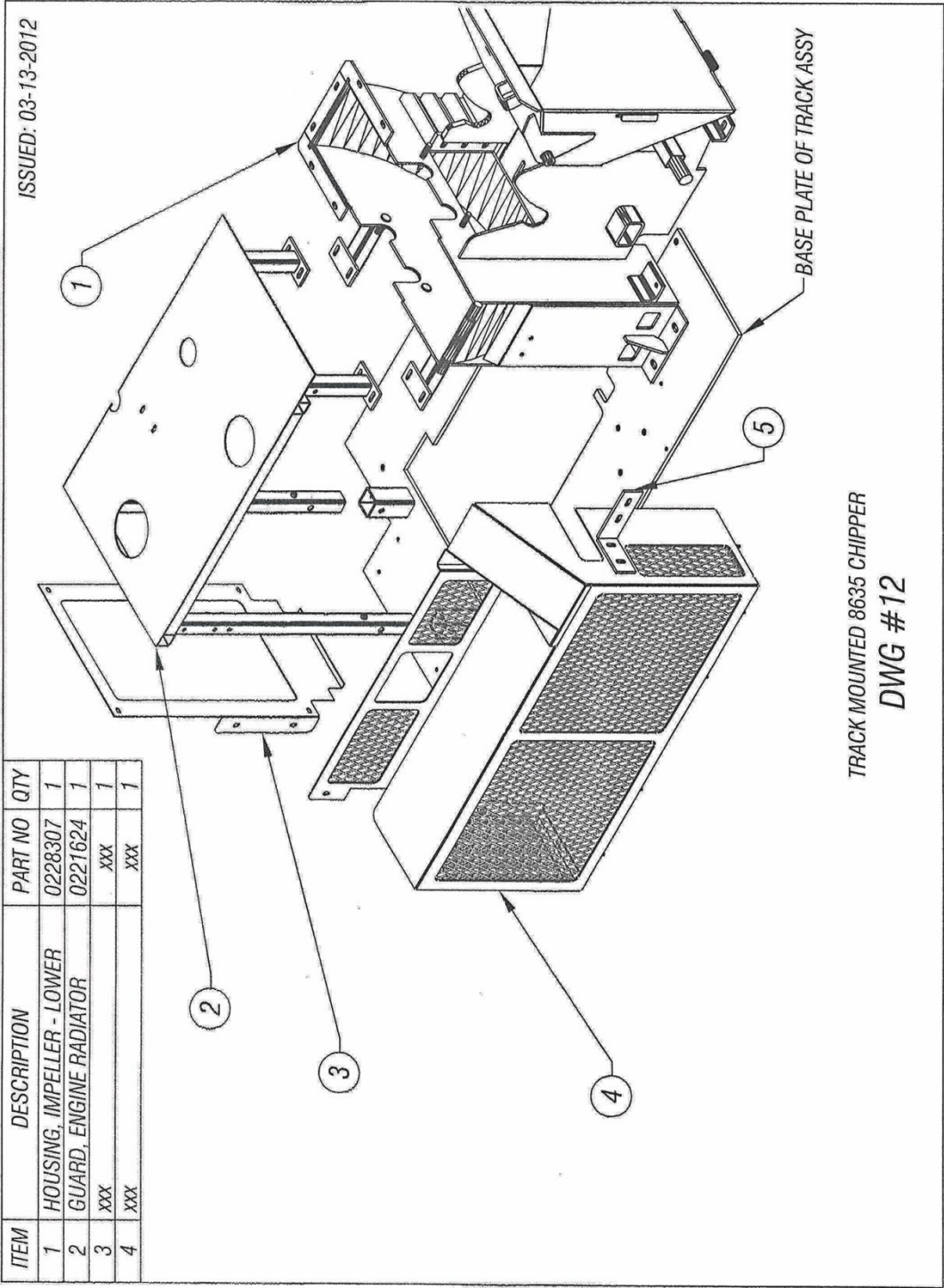
TRACK MOUNTED 8635 CHIPPER  
DWG #10

ISSUED: 03-13-2012

ITEM	DESCRIPTION	PART NO	QTY
1	LOWER HOUSING	xxx	1
2	LOWER HOUSING	xxx	1



TRACK MOUNTED 8635 CHIPPER  
DWG #11



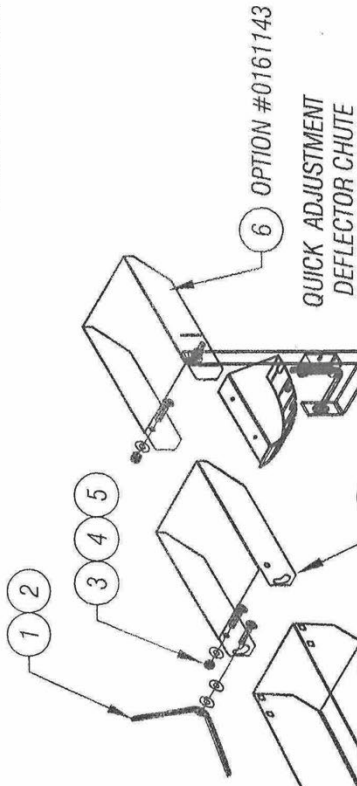
ISSUED: 03-13-2012

ITEM	DESCRIPTION	PART NO	QTY
1	HOUSING, IMPELLER - LOWER	0228307	1
2	GUARD, ENGINE RADIATOR	0221624	1
3	XXX	XXX	1
4	XXX	XXX	1

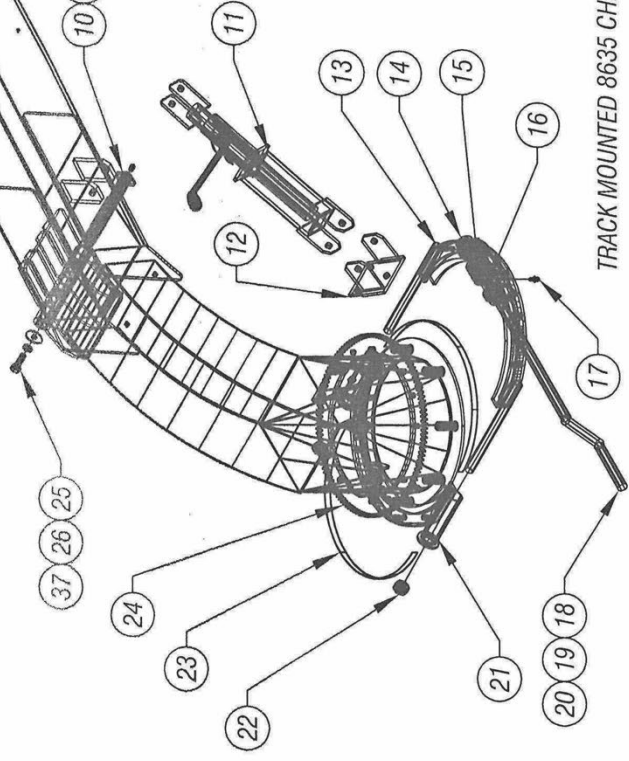
TRACK MOUNTED 8635 CHIPPER  
DWG #12

ISSUED: 03-13-2012

ITEM	DESCRIPTION	PART NO	QTY
1	WING NUT	0238500	1
2	LOCK WASHER, SPLIT	053005	1
3	NUT, NYLON LOCK	0338104	3
4	FLAT WASHER	0353104	4
5	BOLIM CARRIAGE	0346429	4
6	QUICK ADJUSTMENT DEFLECOR CHUTE	0161143	1
7	CHUTE, DEFLECTOR	0426028	1
8	CHUTE, HEIGHT ADJUSTABLE EXHAUST	xxx	1
9	GREASE FITTING, 1/8 NPT	0317083	1
10	PIN, HINGE	0224011	1



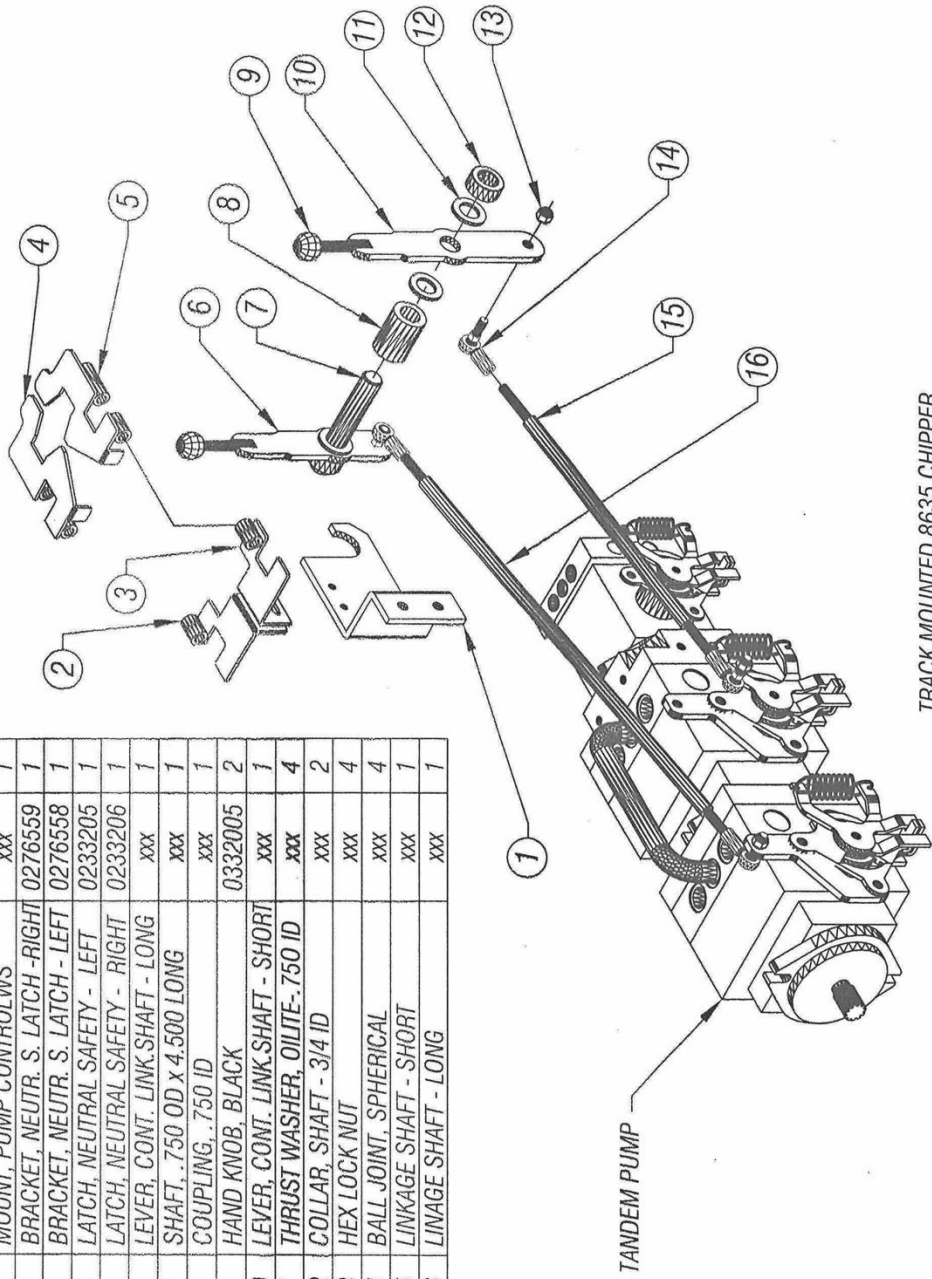
ITEM	DESCRIPTION	PART NO	QTY
11	JACKM EXHAUST HEIGHT LIFTING	0269031	1
12	SUPPORT, PIVOT JACK	0277127	1
13	CLAMP, FRONT HALF	0210107	1
14	COLLAR, SET	0311038	2
15	GEAR, WORM-HELIX	0363011	1
16	SPACER, D.O.M. 1 1/8"IDx1/8 WALL x1 7/16"LONG	0337328	2
17	GREASE FITTING	0423097	1
18	HANDLE, CRANK CHUTE ROTATION	0431009	1
19	KEY	0407034	2
20	BUSHING, BRONZE	0210106	1
21	CLAMP, REAR HALF	0338106	2
22	LOCK NUT	0436117	2
23	WEAR STRIP, TEFLON	0251117	1
24	SPROCKET, DRIVE CHUTE ROTATION	0346403	1
25	BOLT	0353005	1
26	LOCK WASHER	0453141	1
27	FLAT WASHER		



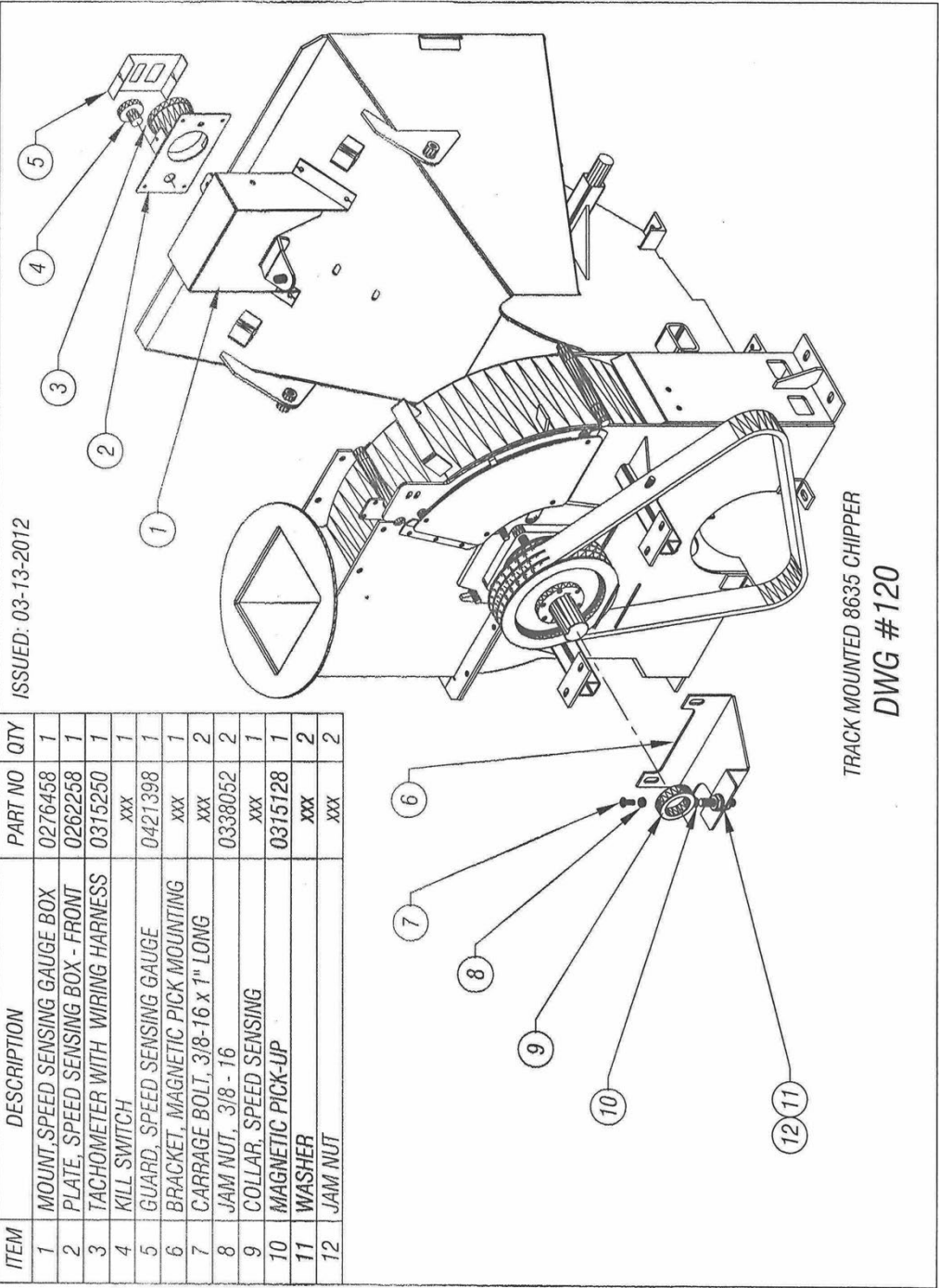
TRACK MOUNTED 8635 CHIPPER  
DWG #12 A

ISSUED: 03-13-2012

ITEM	DESCRIPTION	PART NO	QTY
1	MOUNT, PUMP CONTROLWS	xxx	1
2	BRACKET, NEUTR. S. LATCH - RIGHT	0276559	1
3	BRACKET, NEUTR. S. LATCH - LEFT	0276558	1
4	LATCH, NEUTRAL SAFETY - LEFT	0233205	1
5	LATCH, NEUTRAL SAFETY - RIGHT	0233206	1
6	LEVER, CONT. LINK.SHAFT - LONG	xxx	1
7	SHAFT, .750 OD x 4.500 LONG	xxx	1
8	COUPLING, .750 ID	xxx	1
9	HAND KNOB, BLACK	0332005	2
10	LEVER, CONT. LINK.SHAFT - SHORT	xxx	1
11	THRUST WASHER, OILITE-.750 ID	xxx	4
12	COLLAR, SHAFT - 3/4 ID	xxx	2
13	HEX LOCK NUT	xxx	4
14	BALL JOINT, SPHERICAL	xxx	4
15	LINKAGE SHAFT - SHORT	xxx	7
16	LINAGE SHAFT - LONG	xxx	1



TRACK MOUNTED 8635 CHIPPER  
DWG #13



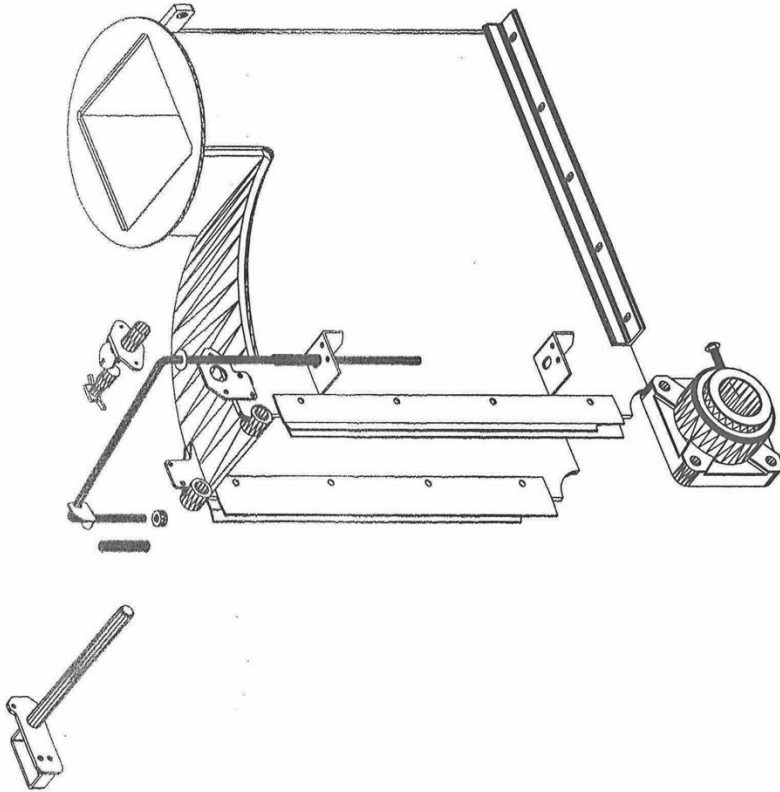
ISSUED: 03-13-2012

ITEM	DESCRIPTION	PART NO	QTY
1	MOUNT, SPEED SENSING GAUGE BOX	0276458	1
2	PLATE, SPEED SENSING BOX - FRONT	0262258	1
3	TACHOMETER WITH WIRING HARNESS	0315250	1
4	KILL SWITCH	xxx	1
5	GUARD, SPEED SENSING GAUGE	0421398	1
6	BRACKET, MAGNETIC PICK MOUNTING	xxx	1
7	CARRAGE BOLT, 3/8-16 x 1" LONG	xxx	2
8	JAM NUT, 3/8 - 16	0338052	2
9	COLLAR, SPEED SENSING	xxx	1
10	MAGNETIC PICK-UP	0315128	1
11	WASHER	xxx	2
12	JAM NUT	xxx	2

TRACK MOUNTED 8635 CHIPPER  
DWG #120

ISSUED: 03-13-2012

ITEM	DESCRIPTION	PART NO	QTY
1	LOWER HOUSING	xxx	1
2	LOWER HOUSING	xxx	1



TRACK MOUNTED 8635 CHIPPER  
DWG #130

