

# **SALSCO, INC.**

## LEADER BY DESIGN

\*\*\*\*\*

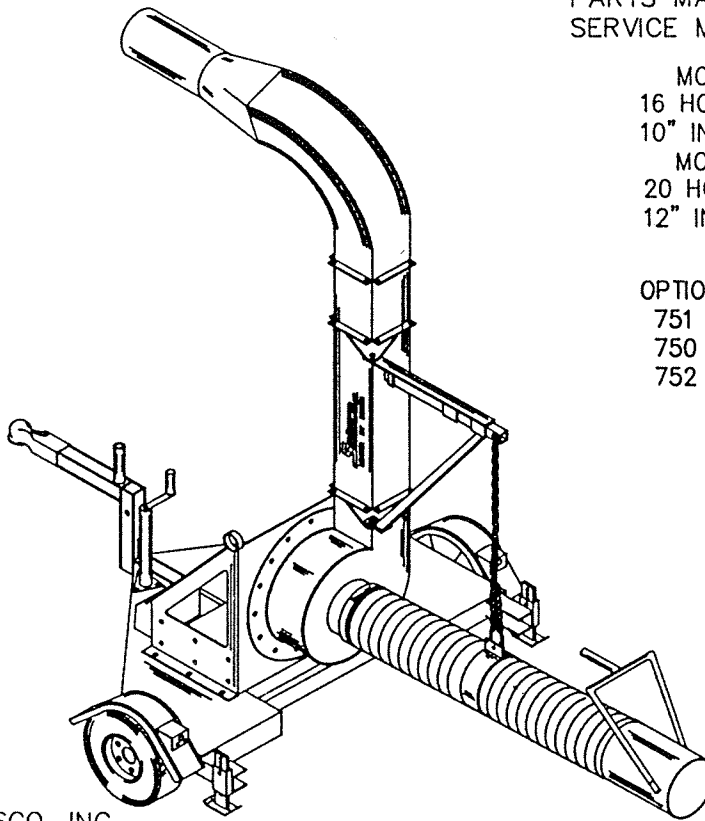
\*\*\*\*\*

MODEL 716 TRUCK LOADERVAC  
MODEL 720 TRUCK LOADERVAC

OWNER,S MANUAL  
PARTS MANUAL  
SERVICE MANUAL

MODEL 716  
16 HORSE POWER MOTOR  
10" INLET HOSE  
MODEL 720  
20 HORSE POWER MOTOR  
12" INLET HOSE

OPTIONAL  
751 WHEEL KIT  
750 TRAILER  
752 DELUXE TRAILER



SALSCO, INC.  
TURF EQUIPMENT DIVISION  
105 SCHOOL HOUSE ROAD  
CHESHIRE, CONN. 06410 USA

\*\*\*\*\*

\*\*\*\*\*

\* NOTE: PLEASE READ "CAUTIONS" IN THIS MANUAL

## STATEMENT OF FACT

YOU HAVE JUST PURCHASED THE HIGHEST QUALITY, MOST EFFICIENT TRUCKLOADER VACUUM ON THE MARKET TODAY. THIS UNIT HAS THE ABILITY TO MEET EXACT STANDARDS AND PERFORM FOR YEARS WITH MINIMUM DOWN TIME. HOWEVER, IT CANNOT READ NOR WILL IT UNDERSTAND THIS MANUAL NO MATTER HOW LONG YOU LEAVE IT ON TOP OF THE MACHINE. IT IS YOUR RESPONSIBILITY TO READ AND UNDERSTAND IT. IT IS ALSO YOUR RESPONSIBILITY TO BE CERTAIN THIS INFORMATION IS PASSED ALONG TO ANYONE WHO IS EXPECTED TO OPERATE THIS EQUIPMENT. SHOULD YOU CHOOSE NOT TO READ, UNDERSTAND AND PASS ALONG THE INFORMATION PROVIDED YOU, PLEASE EXPECT EQUIPMENT FAILURE AND POSSIBLE INJURIES TO PERSONS AROUND THIS EQUIPMENT.

FOR THE SAFETY OF THE OPERATOR, IT IS IMPERATIVE THAT THIS MANUAL IS CAREFULLY READ AND UNDERSTOOD.

HAVING READ THIS MANUAL, IT IS YOUR RESPONSIBILITY TO BE SURE THAT ALL NEW OPERATORS READ AND UNDERSTAND THIS MANUAL ESPECIALLY THE CAUTIONS ON PAGE FIVE.

AS A MANUFACTURER OF EQUIPMENT WE HAVE A RESPONSIBILITY TO DESIGN A SAFE PIECE OF EQUIPMENT. HOWEVER, ONLY YOU CAN PREVENT ACCIDENTS!!

DO NOT RUN MACHINE WITHOUT GUARDS IN PLACE

## DESCRIPTION

### 716 AND 720 TRUCKLOADER VACUUMS

Our larger vacs, 16 H.P. and up are considered the work horses of the line and are a must for anyone who has large clean up jobs in their future. As with the smaller vacs, these units also come standard with a wrapped spring steel wire hose, and the impellers are welded on a robotic welding system to insure a smooth balanced operation. No matter which model you choose, we're sure you'll agree, that not only have you purchased a unit that will increase profits; but also one that will give you years of service with minimal care. There are three great options to make the 716 and 720 independent trailer units: the LOADERVAC TRAILER 750 which makes highway trailing a cinch; the WHEEL KIT 751 which allows you to convert either truck loader to trailer units; and the 752 LOADERVAC TRAILER our deluxe model which comes standard with leaf springs, screwjack, and a place to carry two walk behind leaf blowers.

THINK

SAFETY

MANUFACTURED BY: SALSCO, INC.  
TURF EQUIPMENT DIVISION  
105 SCHOOL HOUSE ROAD  
CHESHIRE, CONNECTICUT 06410  
203/271-1682  
FAX (203) 271-2596

TRUCKLOADER VACUUM MANUAL

THIS MANUAL COVERS MODELS: 716 & 720 TAILGATE LOADERS  
751 & 752 TRAILERS

This company reserves the right to discontinue, add improvements to, or change the design of any model or product at any time without obligation to improve existing machines, either by changing the design or adding new parts.

It has been and will continue to be the policy of SALSCO to update existing machines at its own discretion. Whenever possible, new designs will be made in such a way, that they can be "Retro Fit" if so desired.

Record in space provided below the model and serial numbers of this unit. Please retain these numbers for future reference.

No parts orders will be accepted without Model numbers or parts numbers.

----- Model Number		----- Serial Number
<u>Model No.</u>	<u>Prefix</u>	Part Number Code: <u>Model</u> <u>Part Number*</u>
716	= 716	000 A 000

\* PART NUMBER PREFIX MUST BE USED WHEN ORDERING PARTS (\_\_\_A000).  
PREFIX NUMBER IS LISTED ABOVE.

\*\*\*\* CAUTION \*\*\*\*

READ AND UNDERSTAND THIS MANUAL BEFORE STARTING MACHINE!!

DO NOT RUN MACHINE WITHOUT GUARDS IN PLACE

SERVICE SCHEDULE

- |    |  |        |
|----|--|--------|
| 1. | CHECK ENGINE OIL (SEE ENGINE MANUAL)               | DAILY  |
| 2. | CHECK VIBRATIONS                                   | DAILY  |
| 3. | CHECK FOR TORN OR DAMAGED HOSE                     | DAILY  |
| 4. | VISUALLY CHECK FOR LOOSE BOLTS OR DAMAGE           | DAILY  |
| 5. | CLEAN MACHINE                                      | DAILY  |
| 6. | CHECK TIRES (TRAILER UNITS)                        | DAILY  |
| 7. | CHECK BATTERY FOR WATER AND ELECTRICAL CONNECTIONS | WEEKLY |

THINK

SAFETY

CAUTION

BEFORE YOU START THIS MACHINE:

1. READ AND UNDERSTAND OWNER'S MANUAL.
2. DO NOT RUN WITHOUT GUARDS AND OTHER SAFETY COVERS ON MACHINE.
3. NEVER LEAVE MACHINE RUNNING WHILE UNATTENDED.
4. NEVER REACH UNDER OR INTO MACHINE FOR ANY REASON WHILE MACHINE IS RUNNING AS IT CAN CAUSE SERIOUS INJURY.
5. ALWAYS REMOVE SPARK PLUG WIRE, MAKE SURE ENGINE SWITCH IS OFF, THROTTLE IS IN STOP POSITION, AND SHUT GAS OFF WHEN WORKING ON OR CHECKING INSIDE OF MACHINE.
6. NEVER CLEAN INLET TUBE OR OUTLET TUBE WHILE ENGINE IS RUNNING.
7. EYE PROTECTION SHOULD ALWAYS BE WORN WHEN RUNNING MACHINE.
8. BE SURE AIR INTAKE ON ENGINE IS CLEAR OF LEAVES AND DEBRIS.
9. WHEN UNHITCHING FROM TOW VEHICLE BE SURE REAR JACK STANDS ARE 2" FROM GROUND AND PINNED.
10. DO NOT REMOVE CAUTION DECALS.
11. SAFETY DECALS SHOULD BE REPLACED IMMEDIATELY AFTER REPAINTING OR WHEN THEY BECOME ILLEGIBLE. \*\* SEE NOTE BELOW \*\*

**\*\* NOTE \*\***

SAFETY IS A PRIME CONCERN AT SALSICO AND THE SAFETY DECALS ON YOUR MACHINE ARE A HIGHLY VISIBLE AND CONSTANT REMINDER TO ALL OPERATORS. REPLACEMENT SAFETY DECALS MAY BE OBTAINED FROM YOUR LOCAL DEALER OR BY CALLING TOLL FREE 1-800-8SALSICO.

DO NOT RUN MACHINE WITHOUT GUARDS IN PLACE

(082288)

## OPERATING INSTRUCTIONS

- 1) READ MANUAL THOROUGHLY.
- 2) ON TRAILER UNITS, LOWER TRAILER LEG STANDS.
- 3) BE SURE INTAKE HOSE IS CONNECTED TO BLOWER HOUSING.
- 4) PLACE INLET HOSE ON GROUND NEAR PILE OF DEBRIS.
- 5) START MOTOR AND LET IDLE TILL IT WARMS UP (SEE ENGINE MANUAL).
- 6) BRING UP TO FULL R.P.M. SLOWLY, CHECKING FOR VIBRATIONS.
- 7) YOU SHOULD BE ABLE TO DO 90% OF YOUR WORK WITH THE ENGINE AT 3/4 THROTTLE. THIS WILL LESSEN FUEL CONSUMPTION AND ADD TO ENGINE LIFE.
- 8) YOU CAN EITHER MOVE INLET BY HAND OR BLOW LEAVES TO INLET TUBE. IT WILL PICK UP MOST OF THE PILE BY ITSELF.

### \*\*\*\* NOTE \*\*\*\*

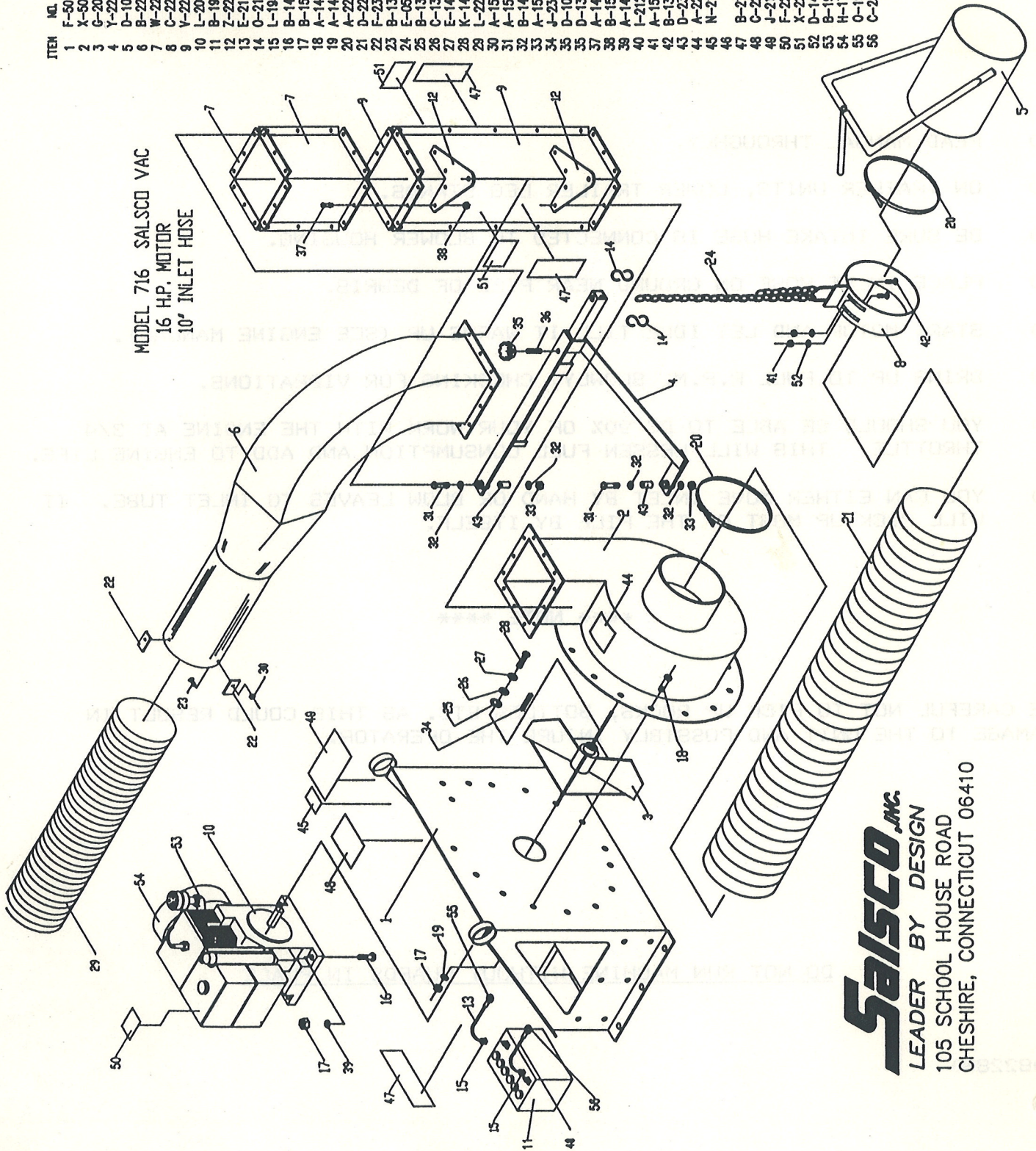
BE CAREFUL NOT TO PICK UP ROCKS, BOTTLES ETC. AS THIS COULD RESULT IN DAMAGE TO THE UNIT AND POSSIBLY INJURE THE OPERATOR.

DO NOT RUN MACHINE WITHOUT GUARDS IN PLACE

(082288)



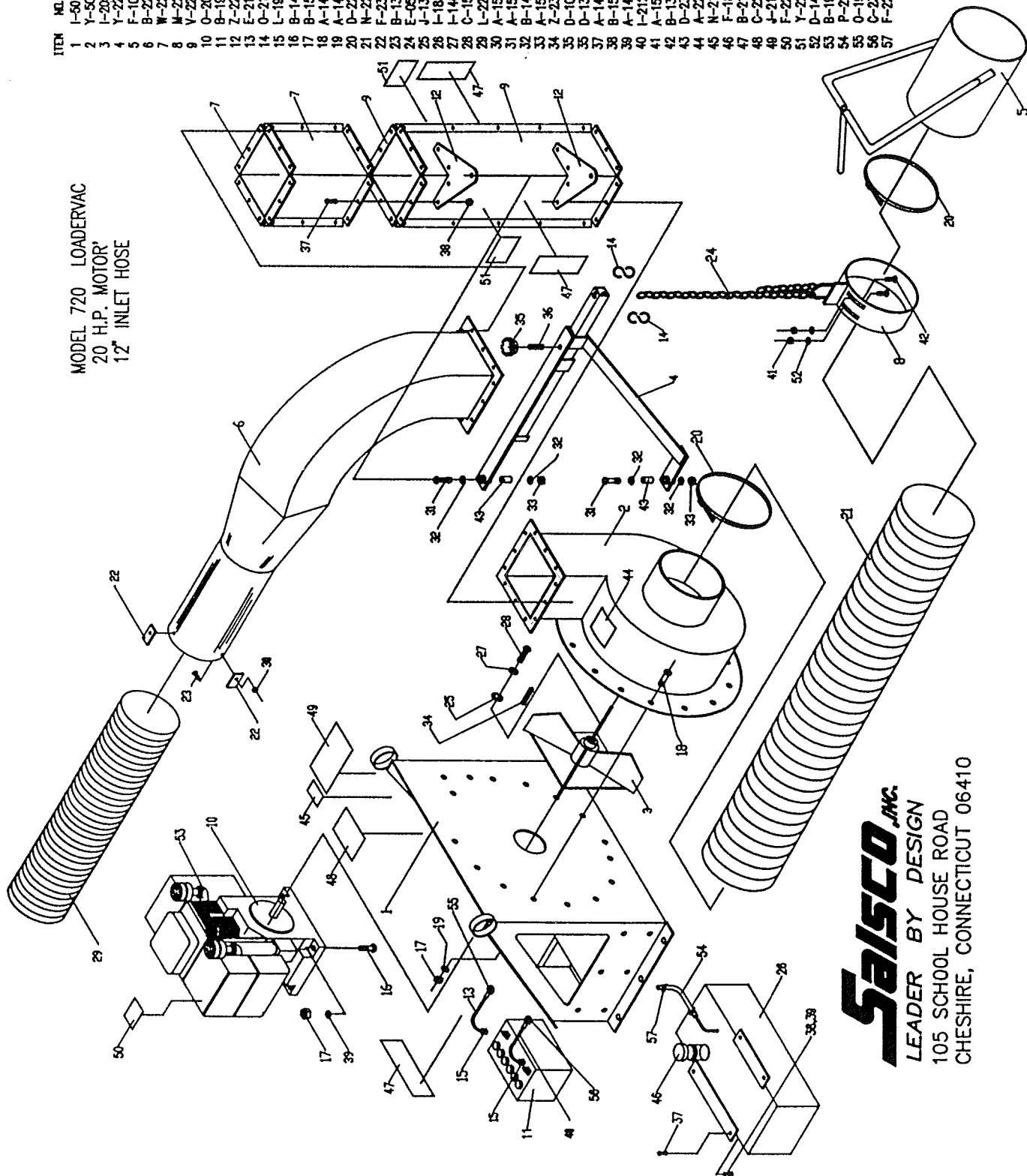
ITEM	QTY	NAME	QTY
1	1	FRAME	1
2	1	HOUSING	1
3	1	IMPELLER	1
4	1	HANGER ASSY	1
5	1	HOSE HANDLE	1
6	1	OUTLET TUBE 90°	1
7	2	SHORT TUBE	2
8	1	HOSE HANGER	1
9	1	LONG TUBE	1
10	1	16 H.P. MOTOR	1
11	1	BATTERY	1
12	2	HANGER PLATE	2
13	1	BATTERY CABLE 12"	1
14	1	S HOOK	1
15	1	BATTERY CLAMP	1
16	4	HEX SCREW	4
17	20	LOCK NUT	20
18	16	HEX SCREW	16
19	16	LOCK WASHER	16
20	1	HOSE CLAMP	1
21	2	10 FLEX HOSE	2
22	3	RETG PLATE	3
23	3	CARRIAGE BOLT	3
24	1	CHAIN	1
25	1	FLAT WASHER 1/2"	1
26	1	FLAT WASHER 7/16"	1
27	1	LOCK WASHER	1
28	1	HEX SCREW	1
29	1	FLEX TUBE	1
30	1	HEX SCREW	1
31	1	HEX SCREW	1
32	1	FLAT WASHER	1
33	1	LOCK NUT	1
34	1	SQ KEY	1
35	1	KNOB	1
36	1	THD ROD	1
37	1	HEX SCREW	1
38	1	LOCK NUT	1
39	1	LOCK WASHER	1
40	1	BATTERY CABLE 6"	1
41	1	LOCK NUT	1
42	1	CARRIAGE BOLT	1
43	1	SPACER	1
44	1	CAUTION	1
45	1	DECAL ID TAG	1
46	1	DECAL SALSCO	1
47	1	DECAL RECOIL SCREEN	1
48	1	DECAL SAFETY	1
49	1	DECAL OIL	1
50	1	DECAL MODEL	1
51	1	LOCK WASHER	1
52	1	ELBOW	1
53	1	ELBOW	1
54	1	5/16 CRIMP CONN.	1
55	1	5/16 CRIMP CONN.	1
56	1	3/8 CRIMP CONN.	1





ITEM	NO.	NAME	QTY
1	1-501	FRAME	1
2	Y-500	HOUSING	1
3	I-205	IMPELLER	1
4	Y-103	HANGER ASSY	1
5	F-103	HOSE HANDLE	1
6	B-223	OUTLET TUBE 90°	1
7	W-223	SHORT TUBE	2
8	M-223	HOSE HANGER	1
9	V-223	LONG TUBE	2
10	O-200	20 H.P. MOTOR	1
11	B-181	BATTERY	1
12	Z-228	HANGER PLATE	2
13	E-212	BATTERY CABLE 12'	1
14	O-219	S HOOK	2
15	L-193	BATTERY CLAMP	2
16	B-143	HEX SCREW	4
17	B-158	LOCK NUT	20
18	A-142	HEX SCREW	16
19	A-146	LOCK WASHER	16
20	D-224	HOSE CLAMP	2
21	N-223	12" FLEX HOSE	1
22	F-239	RET'G PLATE	3
23	B-136	CARRIAGE BOLT	3
24	E-053	CHAIN	1
25	J-135	FUEL TANK	1
26	I-183	FLAT WASHER 5/8"	1
27	I-148	HEX SCREW 5/8"	1
28	C-153	LOCK WASHER 5/8 X 2	1
29	L-223	FLEX TUBE	1
30	A-159	HEX SCREW	3
31	A-151	LOCK NUT	2
32	B-147	FLAT WASHER	4
33	A-158	LOCK NUT	2
34	Z-230	SO KEY	1
35	D-104	KNOB	1
36	D-130	TH'D ROD	1
37	A-141	HEX SCREW	54
38	B-158	LOCK NUT	54
39	A-146	LOCK WASHER	6
40	I-212	BATTERY CABLE 6'	1
41	A-159	LOCK NUT	2
42	B-136	CARRIAGE BOLT	2
43	D-237	SPACER	2
44	A-225	DECAL CAUTION	1
45	N-210	DECAL ID TAG	1
46	F-183	FILLER CAP	1
47	B-210	DECAL SALSICO	3
48	C-225	DECAL REDDOL SCREEN	1
49	J-210	DECAL SAFETY	1
50	F-225	DECAL OIL	2
51	Y-225	DECAL MODEL	2
52	D-146	LOCK WASHER	2
53	B-186	ELBOW	2
54	P-223	RUBBER FUEL LINE	1
55	O-183	5/16 CRAMP CONN.	1
56	C-238	3/8 CRAMP CONN.	1
57	F-224	HOSE CLAMP	2

MODEL 720 LOADERVAC  
20 H.P. MOTOR  
12" INLET HOSE



**Salsico** INC.

LEADER BY DESIGN

105 SCHOOL HOUSE ROAD  
CHESHIRE, CONNECTICUT 06410

### WARRANTY

Your Salsco Commercial or Turf Equipment product is a commercial type product and is normally manufactured and sold for commercial or industrial use. Salsco will, for the original purchaser, for one (1) year from the date of purchase (90 days if used for rental purposes; ) repair or replace, free of charge, any part or parts found to be defective in material or workmanship or both. Any transportation charges to be borne by the purchaser.

If, during the Warranty Period, the product does not function properly due to defect, simply contact your Salsco Dealer and provide the unit or part for inspection or contact directly:

SALSCO, INC.  
Service Department  
105 School House Road  
Cheshire, CT 06410

203/271-1682  
FAX: 203/271-2596

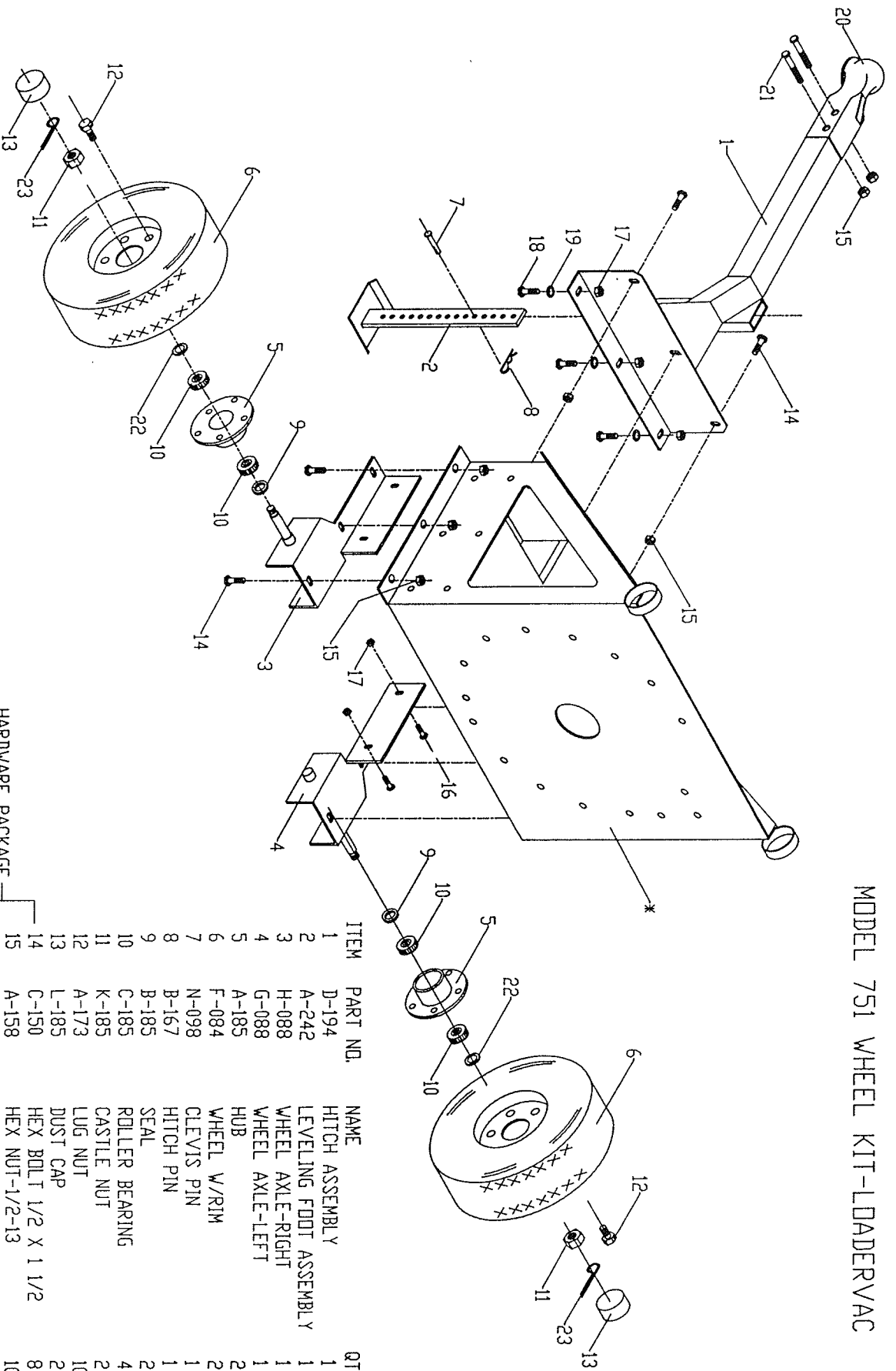
This warranty does not include incidental or consequential damages and is exclusive of any implied warranties.

This warranty does not include normal maintenance parts, including, but not limited to spark plugs, filters, lubricants, springs, tines, tine overlays, nylon bars, and blades.

This warranty does not include parts or components which are covered under the original manufacturers warranty, including, but not limited to engine and differential.

March 30, 1990

# MODEL 751 WHEEL KIT-LOADERVAC



ITEM	PART NO.	NAME	QTY
1	D-194	HITCH ASSEMBLY	1
2	A-242	LEVELING FOOT ASSEMBLY	1
3	H-088	WHEEL AXLE-RIGHT	1
4	G-088	WHEEL AXLE-LEFT	1
5	A-185	HUB	2
6	F-084	WHEEL W/RIM	2
7	N-098	CLEVIS PIN	1
8	B-167	HITCH PIN	1
9	B-185	SEAL	2
10	C-185	ROLLER BEARING	4
11	K-185	CASTLE NUT	2
12	A-173	LUG NUT	10
13	L-185	DUST CAP	2
14	C-150	HEX BOLT 1/2 X 1 1/2	8
15	A-158	HEX NUT 1/2-13	10
16	A-143	HEX BOLT 3/8-16	4
17	B-158	HEX NUT 3/8-16	7
18	A-143	HEX BOLT 3/8-16 X 1 1/2	3
19	G-135	FENDER WASHER-7/16	3
20	C-194	CODUPLING	1
21	E-151	HEX BOLT 1/2-13 X 4	2
22	B-139	FLAT WASHER-3/4 SAE	2
23	D-187	PIN	2

\* HOUSING SHOWN FOR ASSEMBLY PURPOSES ONLY-NOT SUPPLIED WITH KIT



[illegible]

***Salsco, INC.***

LEADER BY DESIGN  
105 SCHOOL HOUSE ROAD  
CHESHIRE, CONNECTICUT 06410