

6529560 TRAVERSE DRIVE REPLACEMENT KIT

INSTALLATION INSTRUCTIONS

REPLACEMENT OF TRAVERSE DRIVE IN THE AUTOMATED REEL GRINDER.

This traverse drive control board assembly will replace the current traverse drive. This kit is designed to be installed by somebody with knowledge of the machine and has necessary electrical knowledge and skill to reliably test and repair the electrical system. For those without this background, service should be arranged through your local distributor.

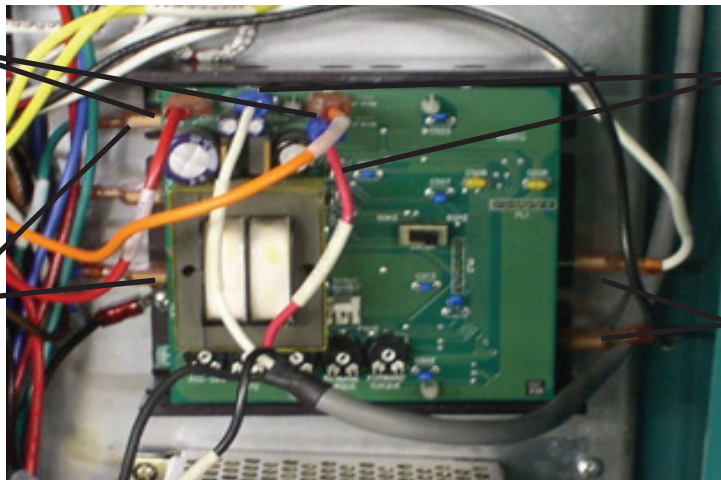
INSTRUCTIONS:

STEP 1: REMOVE POWER TO THE MACHINE! Unplug the machine. **!! FAILURE TO REMOVE POWER MAY RESULT IN INJURY, DEATH OR DAMAGE TO THE MACHINE!! READ ALL STEPS BEFORE STARTING TO FULLY UNDERSTAND WHAT IS REQUIRED.**

STEP 2: Open the control box and disconnect the nine wires connected to the traverse drive.

REMOVE TWO CONNECTED TO S1 AND S2 ON THE OLD TRAVERSE BOARD (1 orange and 1 red wire)

REMOVE THREE INCOMING POWER WIRES (1 green, 1 brown, and 1 light blue wire.)



REMOVE THE TWO TRAVERSE SPEED POTENTIOMETER WIRES (1 white and 1 red wire)

REMOVE THE TWO OUTPUT POWER WIRES (1 white and 1 black wire.)

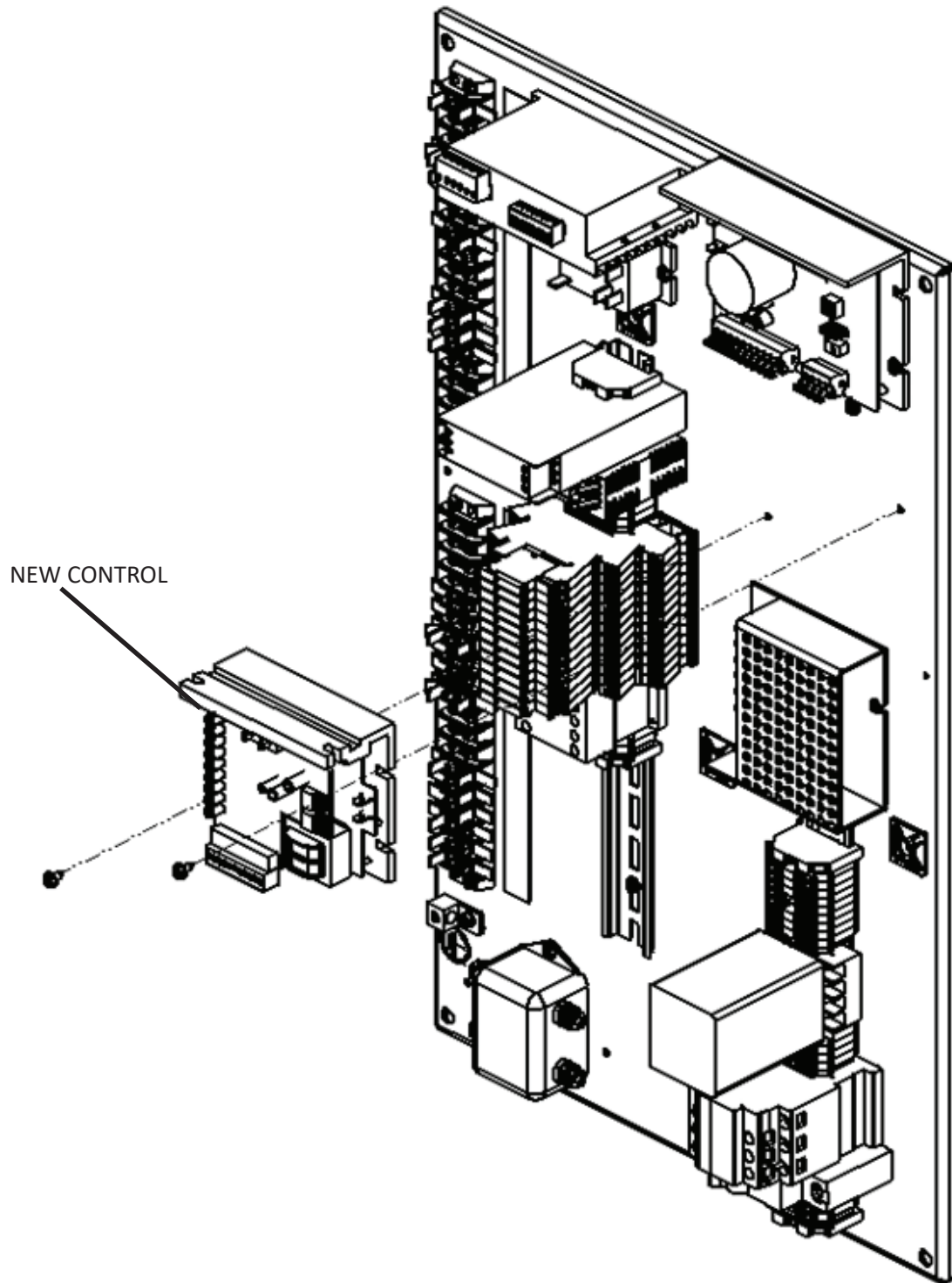
STEP 3: Remove the old traverse drive. To remove, unscrew the two screws holding the drive to the electrical control panel.

REMOVE THREE INCOMING POWER WIRES (1 green, 1 brown, and 1 light blue wire.)



REMOVE SCREW ON UPPER RIGHT SIDE

STEP 4: Mount the new control board onto the electrical control sub panel using the two screws that held the original board in place. NOTE: Be sure to mount ground wire from traverse speed pot using the lower left hand screw (SEE STEP 3).



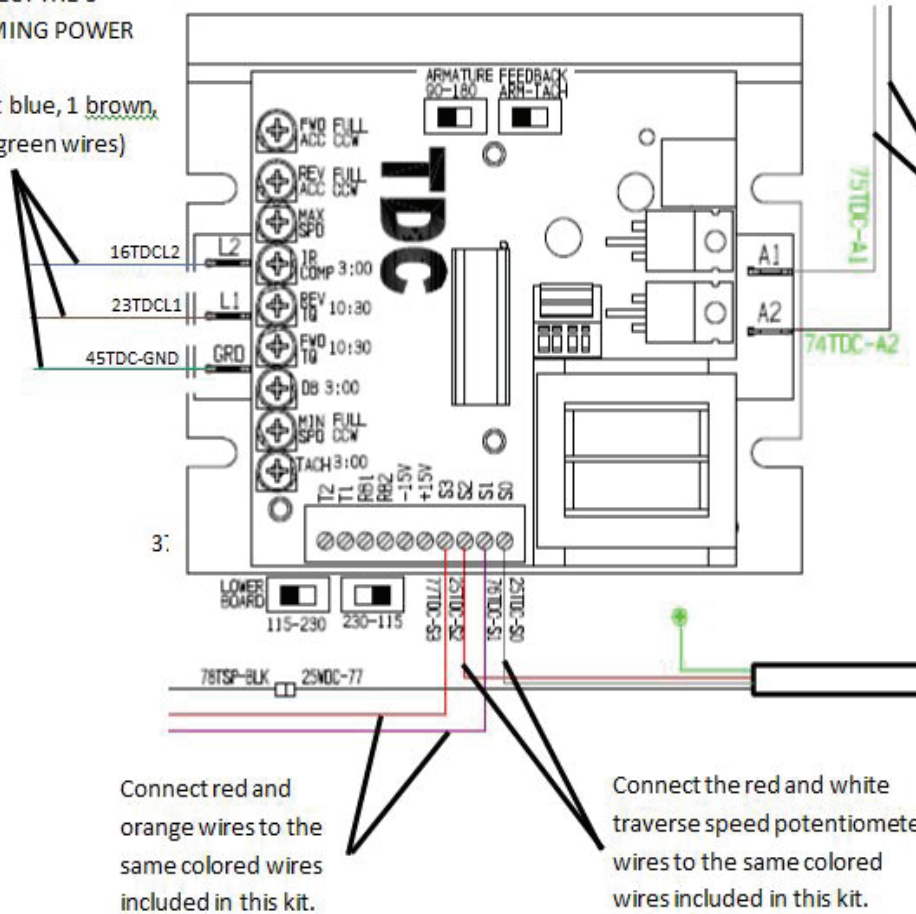
STEP 5: Connect the wires to the new control board as indicated below. Connect the 3 incoming power and 2 output power wires to the new control. Then install the 4 wires included with this kit to S0, S1, S2 and S3 on the new control. Connect the two wires from the traverse speed potentiometer and the other 2 control wires to the 4 wires that were just connected .

Verify that all wires are in place and tight.

NEW TRAVERSE CONTROL WIRING

CONNECT THE 3
INCOMING POWER
WIRES

(1 light blue, 1 brown,
and 1 green wires)



CONNECT THE 2
OUTPUT
POWER WIRES
(1 black and 1
white wire)

Connect red and
orange wires to the
same colored wires
included in this kit.

Connect the red and white
traverse speed potentiometer
wires to the same colored
wires included in this kit.

STEP 6: Close the control box and reconnect the power.

Turn the traverse speed potentiometer to maximum (full clockwise). From the spin or relief jog screen, verify that the carriage moves correctly in both directions.

** Discard the old traverse control board per your local code and regulations.