

**Salsco, INC.**  
LEADER BY DESIGN

MADE IN THE U.S.A

OPERATORS AND PARTS MANUAL  
MODEL 6235BXT



**MANUFACTURER OF OUTDOOR POWER EQUIPMENT**

Products for Turf & Lawn care, Rental, Construction, Tree care, Wood Processing, Nursery & Farm Industries

*Other Salsco Equipment*

**3-1/2" - 18", Gas, Diesel, and P.T.O, Wood/Brush Chippers  
Chipper Shredder Vacuums - Tailgate & Truckloader Vacuums  
Strawblowers - Slicer Seeder**

***Quality of Workmanship, Innovative  
Design, Built to Last!***

105 School House Road  
Cheshire, CT 06410 U.S.A.  
800-872-5726, 203-271-1682, 203-271-2596 (Fax)  
sales@salsco.com, www.salsco.com

**TABLE OF CONTENTS**  
**MODEL 6235BXT CHIPPER**

COVER & TABLE OF CONTENTS.....Pages 1 – 2

STATEMENT OF FACT ..... Page 3

SPECIFICATIONS & FEATURES .....Page 4

SAFETY & OPERATING INSTRUCTIONS .....Pages 5 - 8

SERVICE & MAINTENANCE INSTRUCTIONS .....Page 9

PARTS DIAGRAMS .....Pages 10 - 25

TORQUE CHARTS .....Page 26

SERVICE SCHEDULE LOG .....Page 31

**SALSCO, INC.**  
105 School House Road  
Cheshire, CT 06410 USA  
800-872-5726, 203-271-1682  
203-271-2596 (Fax)  
[www.salsco.com](http://www.salsco.com), [sales@salsco.com](mailto:sales@salsco.com)

## **STATEMENT OF FACT**

You have just purchased the highest quality, most dependable, chipper on the market today. This unit has the ability to meet exact standards and perform for years with minimum downtime. **HOWEVER**, it cannot read nor will it understand this manual no matter how long you leave it on top of the machine.

It is your responsibility to read and understand this manual; it is also your responsibility to be certain this information is passed along to anyone who is expected to operate this equipment. Should you choose not to read, understand and pass along the information provided you, please expect equipment failure and possible injuries to persons around this equipment.

For the safety of the operator, it is imperative that this manual is carefully read and understood.

Once you have read this manual, it is your responsibility to be sure that all new operators read and understand this manual, especially all cautions stated.

As a manufacturer of equipment, we have a responsibility to design a safe piece of equipment. NOTE: The important safeguards and instructions in this manual are not meant to cover all possible conditions and situations that may occur. It must be understood that common sense, caution, and care are factors, which cannot be built into any product. These factors must be supplied by the person(s) caring for and operating this equipment.

**ONLY YOU CAN PREVENT ACCIDENTS!**

## SPECIFICATIONS & FEATURES

### SPECIFICATIONS - MODEL 6235BXT - HYDRUALIC FEED

<b>ENGINE:</b>	35HP Briggs & Stratton, Electric Start, Gas Engine.
<b>FUEL TANK:</b>	6 Gallon, Carbon Canister Fuel Tank.
<b>BATTERY:</b>	12 Volt, CCA650, Automotive type.
<b>CLUTCH &amp; BELT:</b>	Centrifugal Clutch, Triple band cogged V-Belt.
<b>INFEED CHUTE:</b>	24" x 29" Opening at the outer edge of the infeed tray.
<b>INFEED OPENING:</b>	7" x 8" Opening to Dual infeed rolls. Infeed handle is easily accessible from either side of unit. (Reverse/Neutral/Slow/Fast)
<b>INFEED ROLLS:</b>	Quantity - 2. 12" long x 5-1/2" diameter, weighted, replaceable blades, fully welded.
<b>CHIPPER DISC HOUSING:</b>	7 Gauge thick steel impeller housing is vented to provide more air flow for chip exhaust.
<b>CHIPPER DISC:</b>	1" Thick x 29" Diameter, 6-welded and gusseted exhaust paddles, fully balanced. 210 Lbs.
<b>CHIPPER BLADES:</b>	Qty. 6, double edge chip blades.
<b>BEARINGS:</b>	4-Bolt, Heavy Duty, cast iron, greaseable & self centering.
<b>BED KNIFE:</b>	1/2" Thick Steel, replaceable, sharpenable & adjustable.
<b>EXHAUST CHUTE:</b>	360-degree Swivel Exhaust, 11 gauge steel, no tools necessary to adjust. Easy adjust exhaust flap.
<b>HYDRAULIC COMPONENTS:</b>	Hoses-2,500 PSI Operating & 10,000 PSI burst. (2) Motors-23.8 displacement. (1) 6 G.P.M. Pump.
<b>TRAILER FRAME &amp; TONGUE:</b>	7 gauge steel frame, fully welded and gusseted for strength. Top Wind 2,000 lb. Jack, 2" Ball Coupler.
<b>AXLE &amp; WHEELS:</b>	2,200 lb. capacity, Tor-Flex Axle, ST205/75R14 Tires, D.O.T. Light Package.
<b>OPTIONS:</b>	Speed Sensing
<b>GUARDS/DECALS:</b>	All Moving Parts Guarded. Full Set of Safety Decals.
<b>PAINT:</b>	Orange, Polyester Powder Coat Paint Provides Excellent Outdoor Weatherability and Offers Protection Against Ultra Violet Discoloration. All Parts Painted Separately.
<b>DIMENSIONS:</b>	Length: 11'      Width: 5'6"      Height: 6'9"      Weight: 1640 LBS.

REV. 1/2013

## CAUTIONS

READ THOROUGHLY THE OPERATOR SAFETY INSTRUCTIONS ON THE FOLLOWING THREE PAGES, WHICH ARE THE AMERICAN NATIONAL STANDARD OF POWERED SHREDDERS/GRINDERS, SAFETY SPECIFICATIONS PROVIDED BY ANSI AND THE O.P.E.I.

THE FOLLOWING CAUTIONS ARE PROVIDED BY SALSCO AS A QUICK REFERENCE ONLY AND ARE NOT MEANT TO REPLACE THE PRECAUTIONS ON THE FOLLOWING PAGES.

1. **ALWAYS** use protective eyewear when machine is in operation.
2. **ALWAYS** use gloves and wear ear protection when machine is in operation.
3. **NEVER** put hands, legs or any part of your body into or near Chipper intake or discharge openings.
4. **NEVER** run with guards removed.
5. **ALWAYS** allow machine to cool off, remove key and put engine in neutral before attempting any maintenance, or repair.
6. **BE SURE** machine has stopped completely, engine is off, key is removed and spark plug is disconnected before attempting any service or maintenance.
7. **NEVER** stand in front of chipper infeed hopper. It is possible for a chip or piece of wood to be thrown out.
8. **BE SURE** the machine is parked on a dry level surface before starting operation.
9. **DO NOT** operate with loose clothing or long unrestrained hair. Be sure vines and branches are not wrapped around your body parts.
10. **DO NOT** operate on ice or any other slippery surface. Be sure area around machine is clear and clean. You do not want to trip into the machine.
11. **NEVER** leave machine running unattended, especially around youngsters or persons not instructed in the safe operation of this machine.
12. **READ** and understand federal guidelines provided with this manual.

**BRUSH CHIPPERS**  
**ANSI Z133.1-2006**  
American National Standard for Arboricultural Operations  
Safety Requirements

**5.3 Brush Chippers**

- 5.3.1 The items contained in section 5.1 shall always be included in the review of this section.
- 5.3.2 Access panels (for example, guards) for maintenance and adjustment, including discharge chute and cutter housing, shall be closed and secured prior to starting the engine of brush chippers. These access panels shall not be opened or unsecured until the engine and all moving parts have come to a complete stop (see Annex C, General Safety Procedures That Apply to All Tree Work).
- 5.3.3 Rotary drum or disc brush chippers not equipped with a mechanical infeed system shall be equipped with an infeed hopper not less than 85 inches (2.15 m) measured from the blades or knives to ground level over the center line of the hopper. Side members of the infeed hopper shall have sufficient height so as to prevent workers from contacting the blades or knives during operations.
- 5.3.4 Rotary drum or disc brush chippers not equipped with a mechanical infeed system shall have a flexible anti-kickback device installed in the infeed hopper to reduce the risk of injury from flying chips and debris.
- 5.3.5 Chippers equipped with a mechanical infeed system shall have a quick-stop and reversing device on the infeed system. The activating mechanism for the quick-stop and reversing device shall be located across the top, along each side, and close to the feed end of the infeed hopper within easy reach of the worker.
- 5.3.6 Vision, hearing, and/or other appropriate personal protective equipment shall be worn when in the immediate area of a brush chipper in accordance with section 3.4, Personal Protective Equipment.
- 5.3.7 Arborists, mechanics, and other workers shall not, under any circumstances, reach into the infeed hopper when the cutter disc, rotary drum, or feed rollers are moving.
- 5.3.8 When trailer chippers are detached from the vehicles, they shall be chocked or otherwise secured in place.
- 5.3.9 When in a towing position, chipper safety chains shall be crossed under the tongue of the chipper and properly affixed to the towing vehicle.
- 5.3.10 See section 8.6, Brush Removal and Chipping, for additional requirements.

**BRUSH REMOVAL AND CHIPPING**  
**ANSI Z133.1-2006**  
American National Standard for Arboricultural Operations  
Safety Requirements

**8.6 Brush Removal and Chipping**

- 8.6.1 Traffic control around the jobsite shall be established prior to the start of chipping operations along roads and highways (see section 3.2, Traffic Control Around the Jobsite).
- 8.6.2 Brush and logs shall not be allowed to create hazards in the work areas.
- 8.6.3 To prevent an entanglement hazard, loose clothing, climbing equipment, body belts, harnesses, lanyards, or gauntlet-type gloves (for example, long-cuffed lineman's or welder's gloves) shall not be worn while operating chippers.
- 8.6.4 Personal protective equipment shall be worn when in the immediate area of chipping operations in accordance with section 3.4, Personal Protective Equipment, of this standard.
- 8.6.5 Training shall be provided in the proper operation, feeding, starting, and shutdown procedures for the chipper being used.
- 8.6.6 Maintenance shall be performed only by those persons authorized by the employer and trained to perform such operations.
- 8.6.7 Brush and logs shall be fed into chippers, butt or cut end first, from the side of the feed table center line, and the operator shall immediately turn away from the feed table when the brush is taken into the rotor or feed rollers. Chippers should be fed from the curb-side whenever practical.
- 8.6.8 The brush chipper discharge chute or cutter housing cover shall not be raised or removed while any part of the chipper is turning or moving. Chippers shall not be used unless a discharge chute of sufficient length or design is provided that prevents personal contact with the blades (see Annex C, General Safety Procedures That Apply to All Tree Work).
- 8.6.9 Foreign material, such as stones, nails, sweepings, and rakings, shall not be fed into chippers.
- 8.6.10 Small branches shall be fed into chippers with longer branches or by being pushed with a long stick.
- 8.6.11 Hands or other parts of the body shall not be placed into the infeed hopper. Leaning into or pushing material into infeed hoppers with feet is prohibited.
- 8.6.12 While material is being fed into the chipper infeed hopper chute, pinch points continually develop within the material being chipped and between the material and machine. The operator shall be aware of this situation and respond accordingly.
- 8.6.13 When feeding a chipper during roadside operations, the operator shall do so in a manner that prevents him or her from stepping into traffic or being pushed into traffic by the material that is being fed into the chipper.
- 8.6.14 When using a winch in chipper operations, the operator shall ensure that the winch cable is properly stored before initiating chipper operations.
- 8.6.15 Refer to section 5.3, Brush Chippers, for additional information.

## OPERATING INSTRUCTIONS

1. Be sure all guards are in place.
2. Check all chambers to be sure they are free and clear of debris.
3. Set direction of discharge chute.
4. Set feed handle in reverse position.
5. Check engine oil and fuel levels, as per engine manufacturer specifications.
6. Set engine throttle just above idle, and set choke.
7. Start engine and let idle for a few minutes to warm up. Open chipper feed tray, at this time.

## HINTS

1. When operating machine, stand off to the side of the feed hopper when feeding wood into the machine. **NEVER STAND DIRECTLY IN FRONT OF THE HOPPER WHEN FEEDING WOOD INTO THE MACHINE.**
2. When using the chipper and you have a short piece of wood bouncing around and not being grabbed by the feed roll, **LEAVE IT! DO NOT TRY TO PUSH IT THROUGH WITH ARMS OR LEGS!** The next limb will push it through.
3. When through with the job let the engine run at full RPM, making sure all material is run through the machine before shutting it down. This will prevent any injuries from flying debris when the machine is started up at the next job.

**WHILE PERFORMING MAINTENANCE OR REPAIR, ALWAYS REMOVE KEY FROM ENGINE AND REMOVE SPARK PLUG WIRE**

## **SERVICE SCHEDULE**

1. **ENGINE** – Follow service maintenance schedule set forth by the manufacturer in the engine manual.
2. **GREASE** - all main bearings once a day. **DO NOT OVER GREASE**. Wipe extra grease off bearings.
3. After using the machine, be sure to clean entire machine, especially around the engine.

**NOTE: SHOULD IT BECOME NECESSARY TO REMOVE THE EXHAUST CHUTE, OR WHENEVER SERVICING OR PERFORMING MAINTENANCE, REMOVE SPARKPLUG WIRES AND KEY FROM ENGINE. NEVER TURN ENGINE OVER WHILE THE EXHAUSTCHUTE IS REMOVED or THE IMPELLER HOUSING IS OPEN. BE SURE THE IMPELLER IS AT A COMPLETE STOP BEFORE OPENING THE IMPELLER HOUSING OR REMOVING THE EXHAUST CHUTE.**

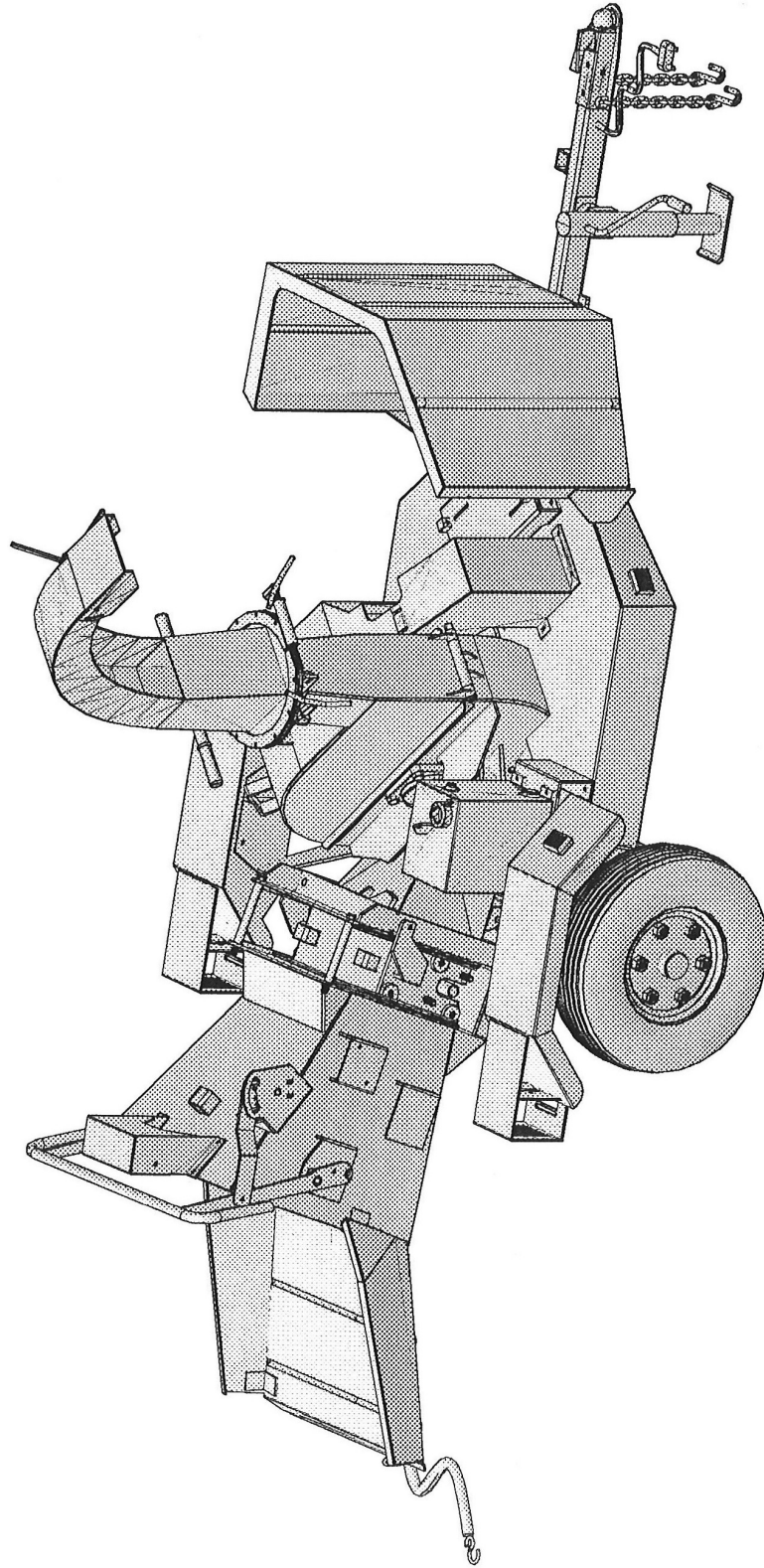
4. **SHARPEN/CHANGE CHIPPER BLADES** – Remove bolt from the impeller housing and open housing. **DO NOT** reach in and hold the impeller with your hand instead use a piece of 2” x 4” wood to push the impeller to desired position. When reinstalling the blades, be sure to use Loctite. We use **Loctite Blue 242**, removable at the factory. **BE SURE** to clean mounting surface before installing the blades, and **BE SURE** to follow the torque specifications in this manual. It is also **RECOMMENDED** that you replace the hardware whenever replacing or reversing the blades.
5. **BED KNIFE ADJUSTMENT** on hydraulic feed machines is .070. Check this clearance on all blades. **HINT:** Blades need sharpening after approximately 8-15 hours of use.

SERVICE SCHEDULE	AS NEEDED	DAILY	WEEKLY	MONTHLY
Clean Machine	X	X		
Grease Infeed Roll Bearing	X	X		
Grease Disc Shaft Bearing	X	X		
Sharpen Chipper Blades	X OR		X	
Check & Adjust Bed Knife	X OR		X	
Check all Nuts & Bolts	X	X		
Check Hydraulic Oil	X			X
Check Hydraulic Hoses	X			X

**NEVER, UNDER ANY CIRCUMSTANCES START THE ENGINE WHEN THE UNIT IS OPEN OR GUARDS HAVE BEEN REMOVED, OR AT ANY TIME DURING SERVICE OR ROUTINE MAINTENANCE.**

ITEM	DESCRIPTION	PART NO	QTY
	6235BXT CHIPPER	0010156	

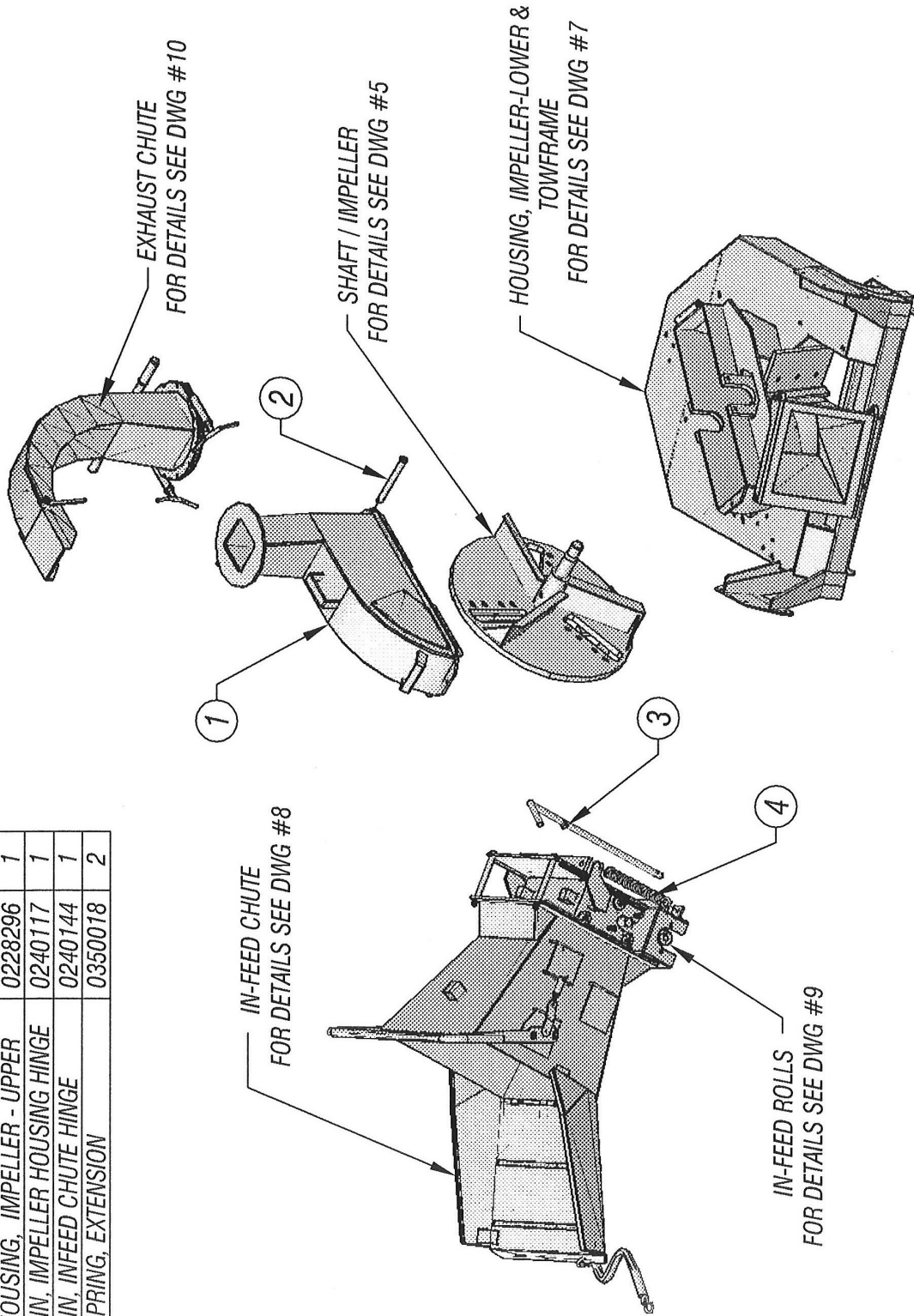
ISSUED:01-21-2013



6235BXT CHIPPER - DWG #1

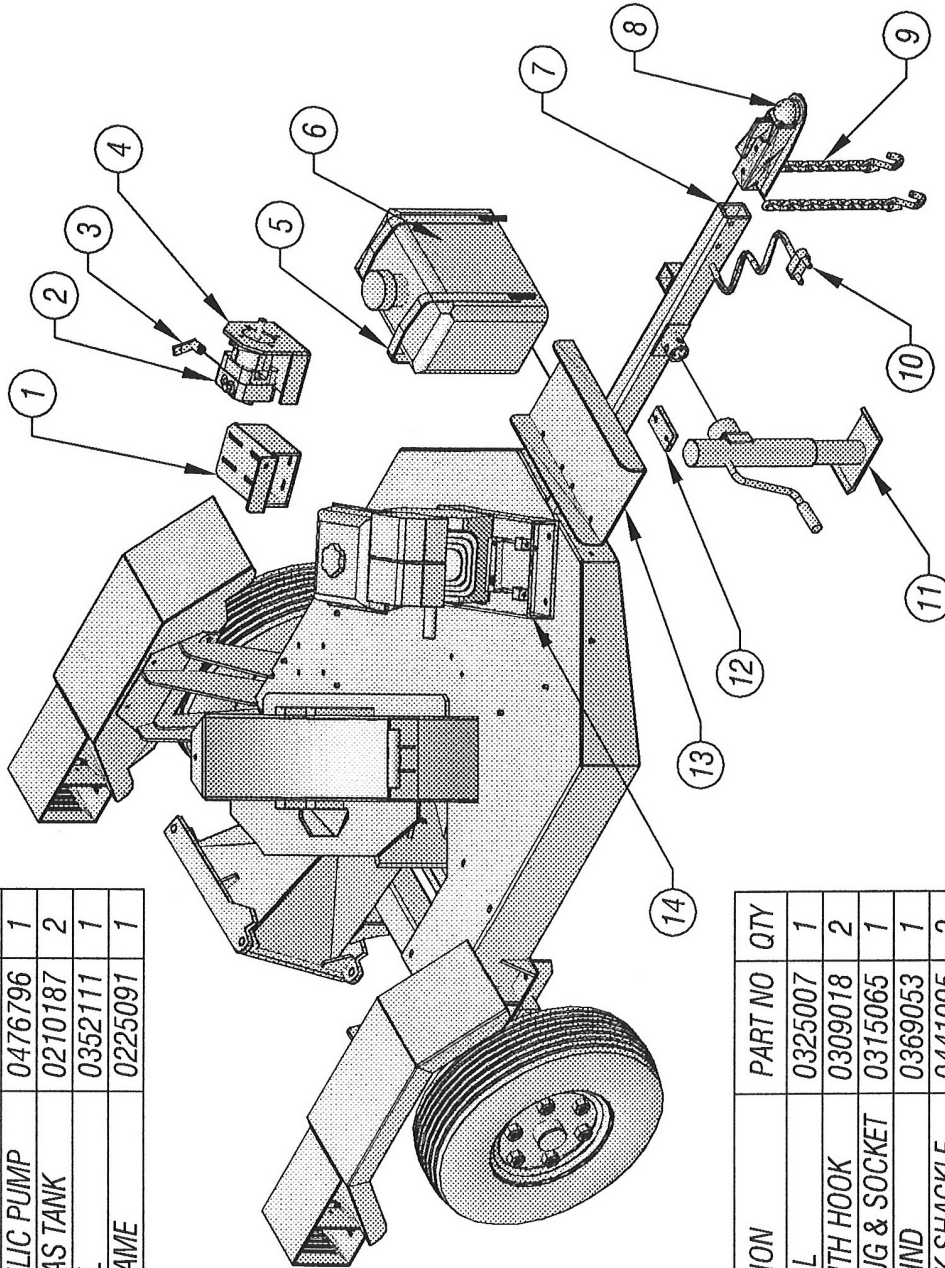
ISSUED: 01-21-2013

ITEM	DESCRIPTION	PART NO	QTY
1	HOUSING, IMPELLER - UPPER	0228296	1
2	PIN, IMPELLER HOUSING HINGE	0240117	1
3	PIN, INFEED CHUTE HINGE	0240144	1
4	SPRING, EXTENSION	0350018	2



6235BXT CHIPPER - DWG #2

ISSUED: 01-21-2013



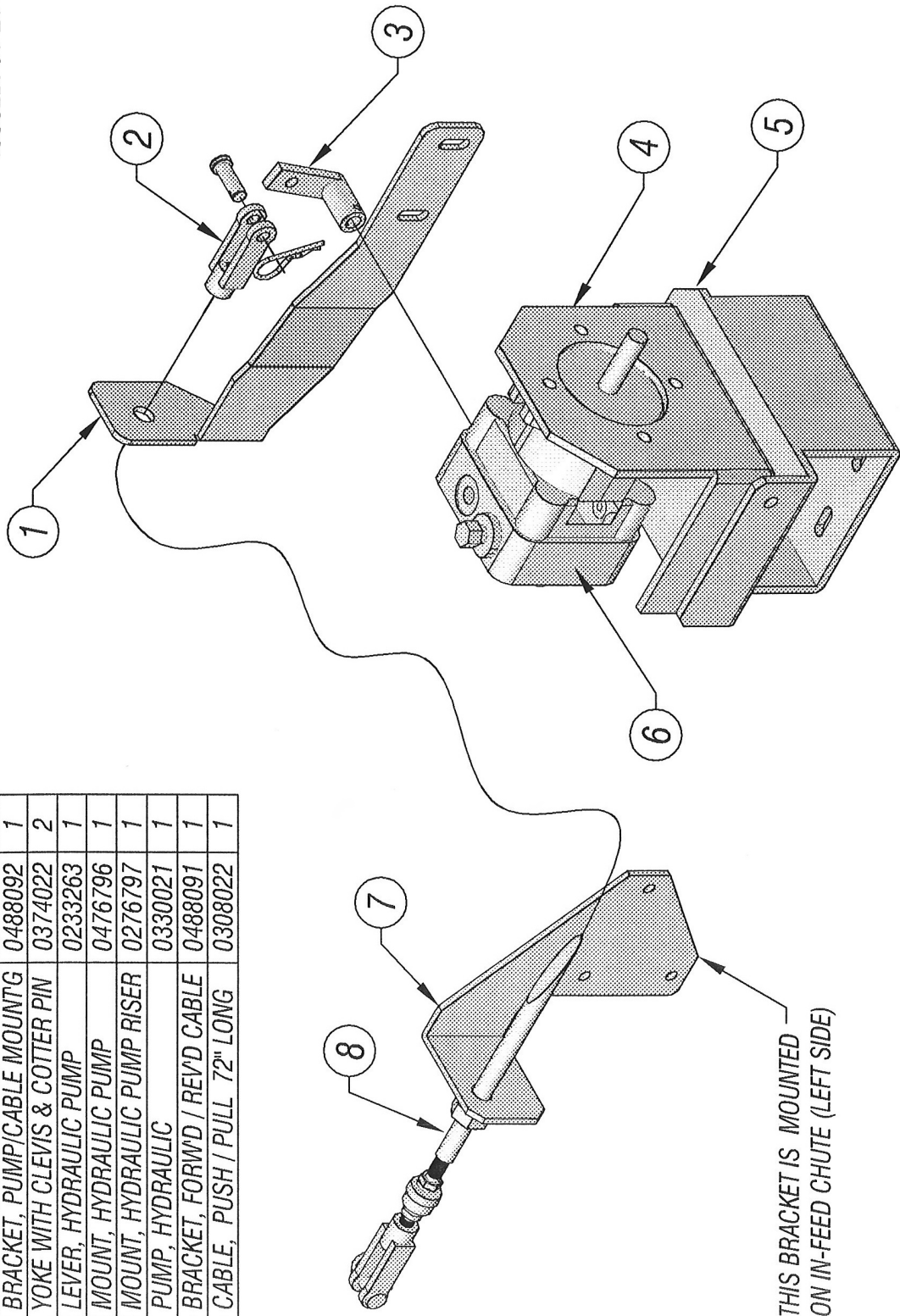
ITEM	DESCRIPTION	PART NO	QTY
1	MOUNT, HYD PUMP RISER	0276797	1
2	PUMP, HYDRAULIC	0330021	1
3	LEVER, HYDRAULIC PUMP	0233263	1
4	MOUNT, HYDRAULIC PUMP	0476796	1
5	CLAMP, 6 GAL GAS TANK	0210187	2
6	TANK, GAS 6 GAL	0352111	1
7	TONGUE, TOWFRAME	0225091	1

ITEM	DESCRIPTION	PART NO	QTY
8	COUPLER, 2" BALL	0325007	1
9	SAFETY CHAIN WITH HOOK	0309018	2
10	CONNECTOR, PLUG & SOCKET	0315065	1
11	JACK 10" SIDE WIND	0369053	1
12	PLATE, FUEL TANK SHACKLE	0441995	2
13	PLATE, TANK MOUNTING	0490047	1
14	FRAME, ENGINE MOUNTING	0219510	1

6235BXT CHIPPER - DWG #3

ISSUED: 01-21-2013

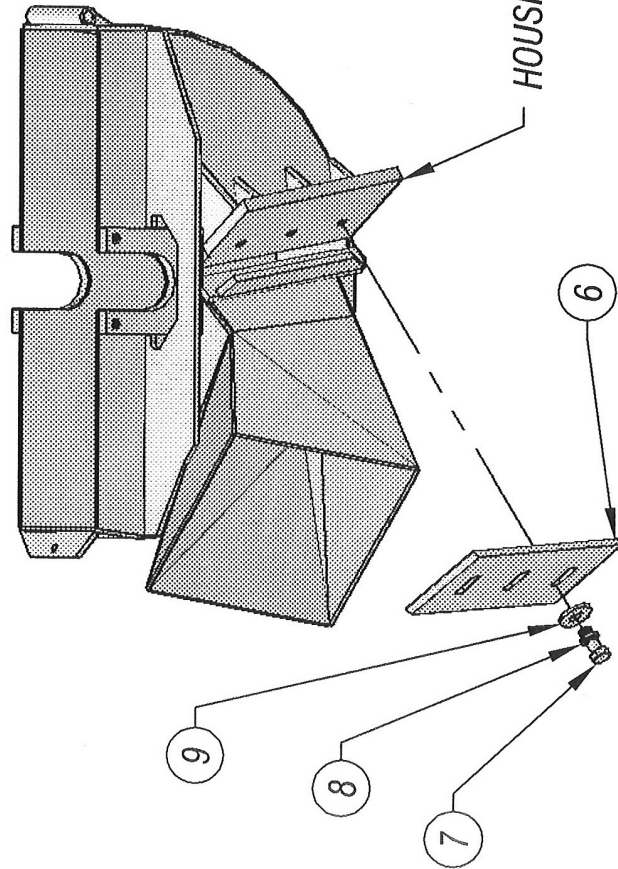
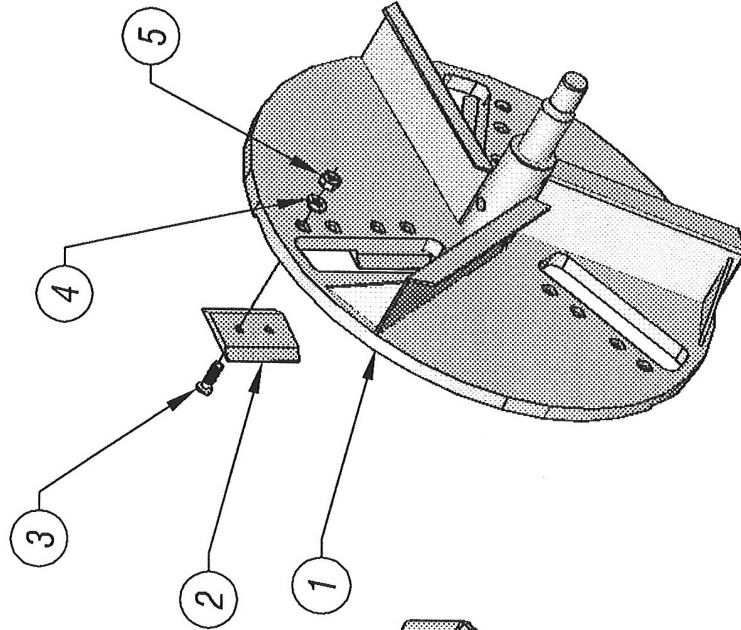
ITEM	DESCRIPTION	PART NO	QTY
1	BRACKET, PUMP/CABLE MOUNTG	0488092	1
2	YOKE WITH CLEVIS & COTTER PIN	0374022	2
3	LEVER, HYDRAULIC PUMP	0233263	1
4	MOUNT, HYDRAULIC PUMP	0476796	1
5	MOUNT, HYDRAULIC PUMP RISER	0276797	1
6	PUMP, HYDRAULIC	0330021	1
7	BRACKET, FORW'D / REV'D CABLE	0488091	1
8	CABLE, PUSH / PULL 72" LONG	0308022	1



6235BXT CHIPPER - DWG #4

ISSUED: 01-21-2013

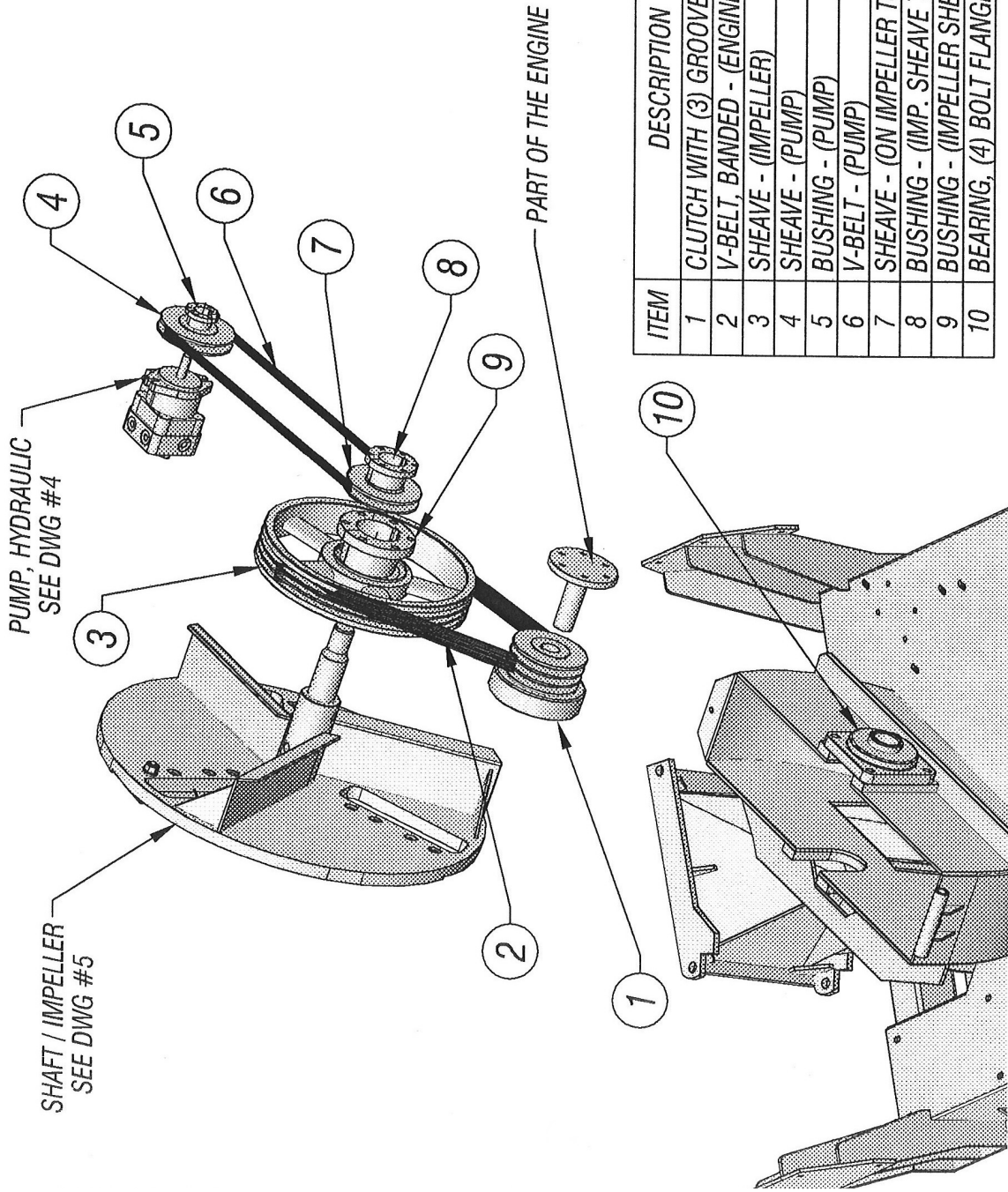
ITEM	DESCRIPTION	PART NO	QTY
1	SHAFT / IMPELLER	0248335	1
2	BLADE, CHIPPER, DOUBLE EDGE	0305090	6
3	FLAT HEAD SOC CAP SCREW	0346487	12
4	LOCK WASHER	0353017	12
5	NUT, STOVER	0338154	12
6	BLADE, BED KNIFE	0405128	1
7	BOLT, HEX HEAD	0346535	3
8	LOCK WASHER	0353014	3
9	FLAT WASHER	0353110	3



HOUSING, IMPELLER-LOWER  
SEE DWG #7

6235BXT CHIPPER - DWG #5

ISSUED: 01-21-2013

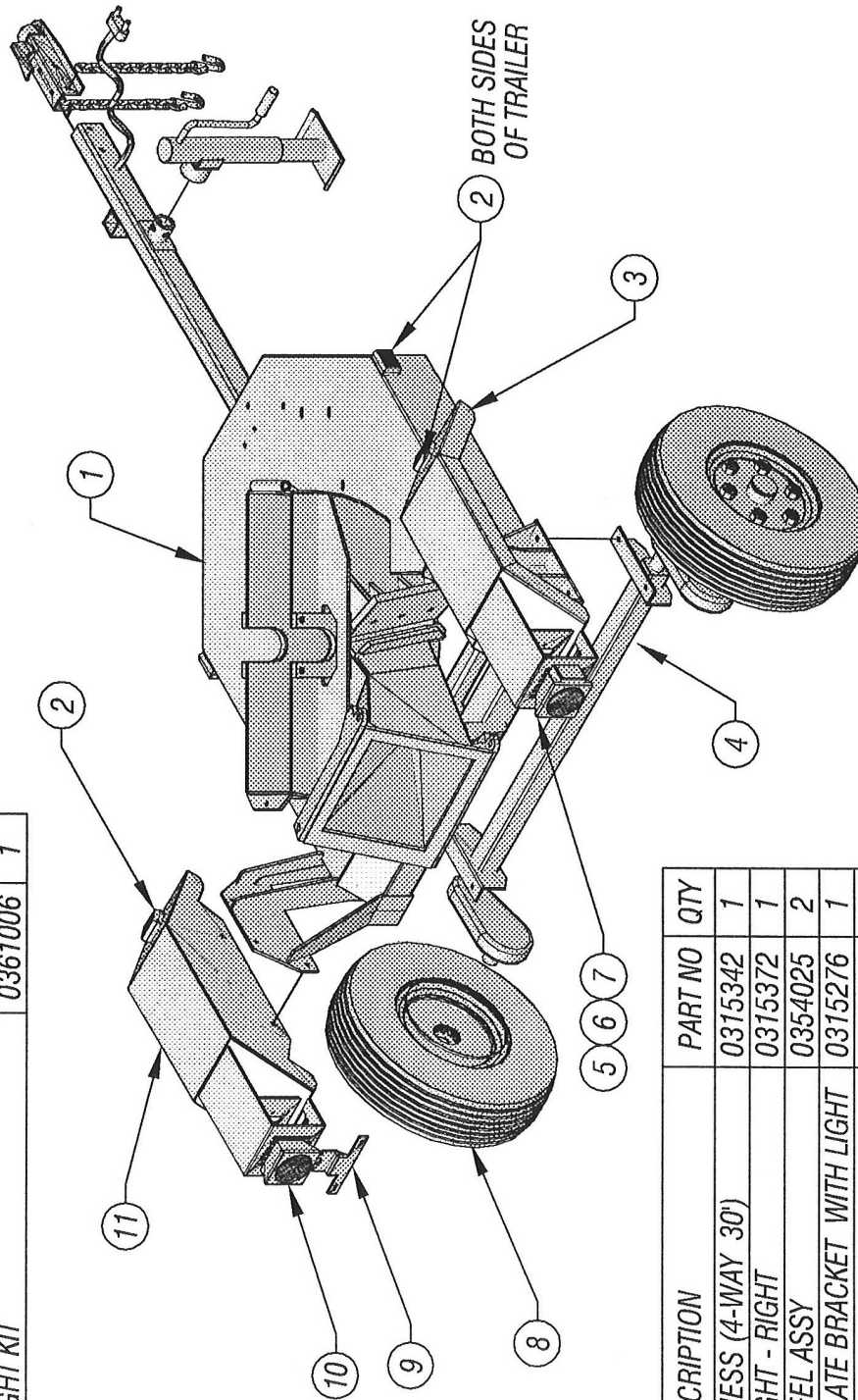


ITEM	DESCRIPTION	PART NO	QTY
1	CLUTCH WITH (3) GROOVE PULLEY	0337277	1
2	V-BELT, BANDED - (ENGINE)	0304183	1
3	SHEAVE - (IMPELLER)	0342166	1
4	SHEAVE - (PUMP)	0342086	1
5	BUSHING - (PUMP)	0342067	1
6	V-BELT - (PUMP)	0304126	1
7	SHEAVE - (ON IMPELLER TO PUMP)	0342085	1
8	BUSHING - (IMP. SHEAVE TO PUMP)	0342250	1
9	BUSHING - (IMPELLER SHEAVE)	0342069	1
10	BEARING, (4) BOLT FLANGE (IMPELLER)	0303059	2

6235BXT CHIPPER - DWG #6

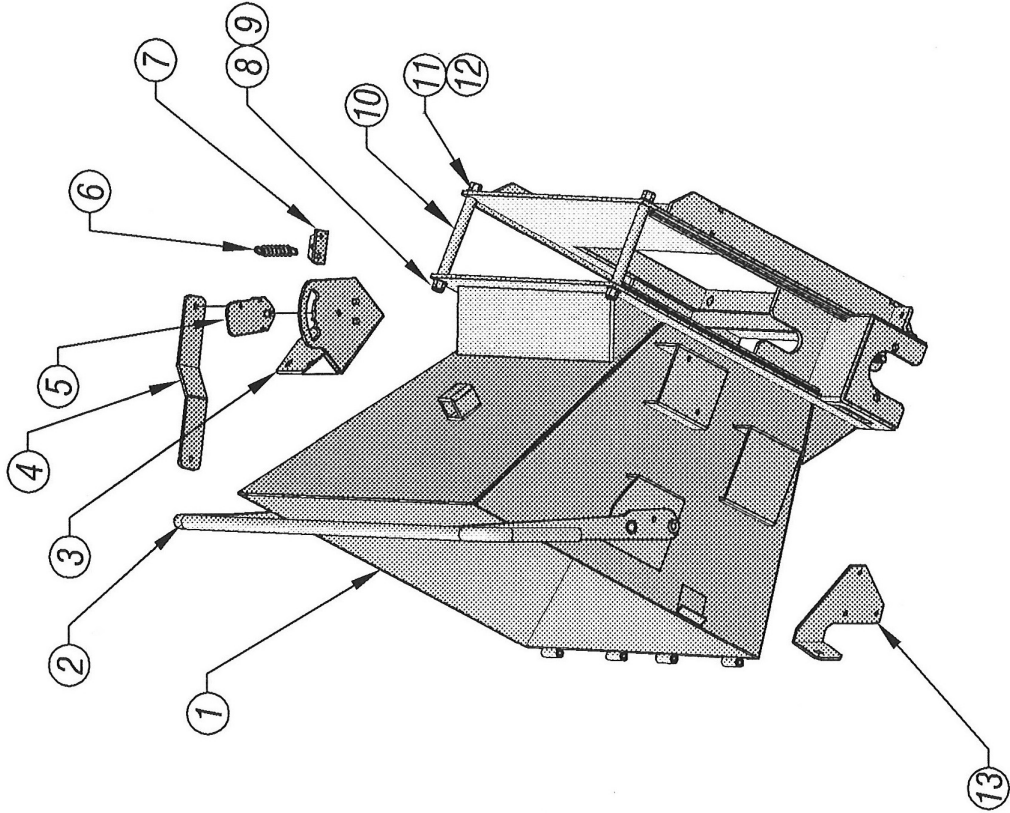
ISSUED: 01-21-2013

ITEM	DESCRIPTION	PART NO	QTY
1	HOUSING, IMPELLER-LOWER & TOWFRAME	0228295	1
2	AMBER LIGHTS	0315245	4
3	FENDER - RIGHT	0216057	1
4	AXLE, #9 TORFLAX	0302112	1
5	TRAILER LIGHT KIT	0361006	1

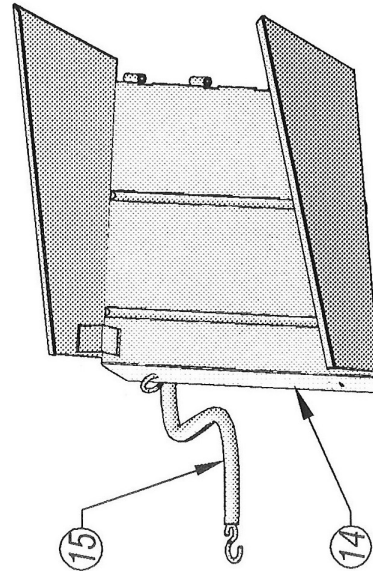


ITEM	DESCRIPTION	PART NO	QTY
6	WIRE HARNESS (4-WAY 30')	0315342	1
7	TRAILER LIGHT - RIGHT	0315372	1
8	TIRE & WHEEL ASSY	0354025	2
9	LICENSE PLATE BRACKET WITH LIGHT	0315276	1
10	TRAILER LIGHT - LEFT	0315373	1
11	FENDER - LEFT	0216056	1

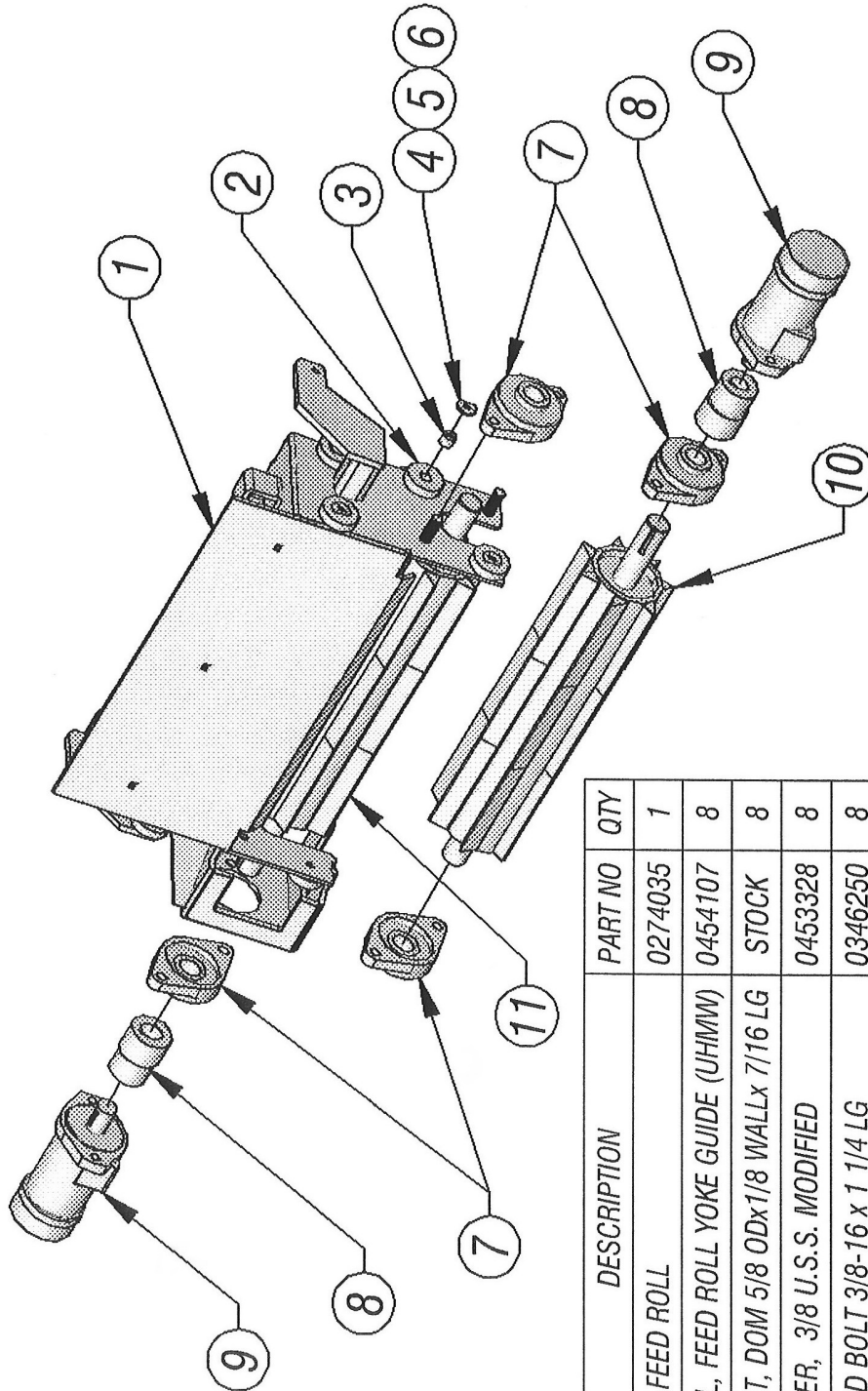
6235BXT CHIPPER - DWG #7



ITEM	DESCRIPTION	PART NO	QTY
1	CHUTE, POWER IN-FEED	0226163	1
2	HANDLE, FWD / REV POWER IN-FEED	0223133	1
3	MOUNT, FORWARD / REVERSE DETENT	0276799	1
4	LEVER, FORWARD / REVERSE DETENT	0433264	1
5	PLATE, DETENT SPRING MOUNTING	0290119	1
6	SPRING, EXTENSION	0350055	1
7	MOUNT, DETENT SPRING - LOWER	0476800	1
8	STUD, IN-FEED CHUTE SUPPORT	0279006	2
9	FLAT WASHER, - 1/2 I.D.	0353115	2
10	TUBE, DOM-3/4 OD x 1/8 WALL x 6 3/4 LG	STOCK	2
11	LOCK WASHER, SPLT - 1/2 I.D.	0353005	2
12	HEX NUT, - 1/2-13	0338005	2
13	BRACKET, FORWARD / REVERSE CABLE	0488091	1
14	DOOR, FOLDING IN-FEED CHUTE	0260071	1
15	BUNGIE CORD - 10"	0308013	1



6235BXT CHIPPER - DWG #8

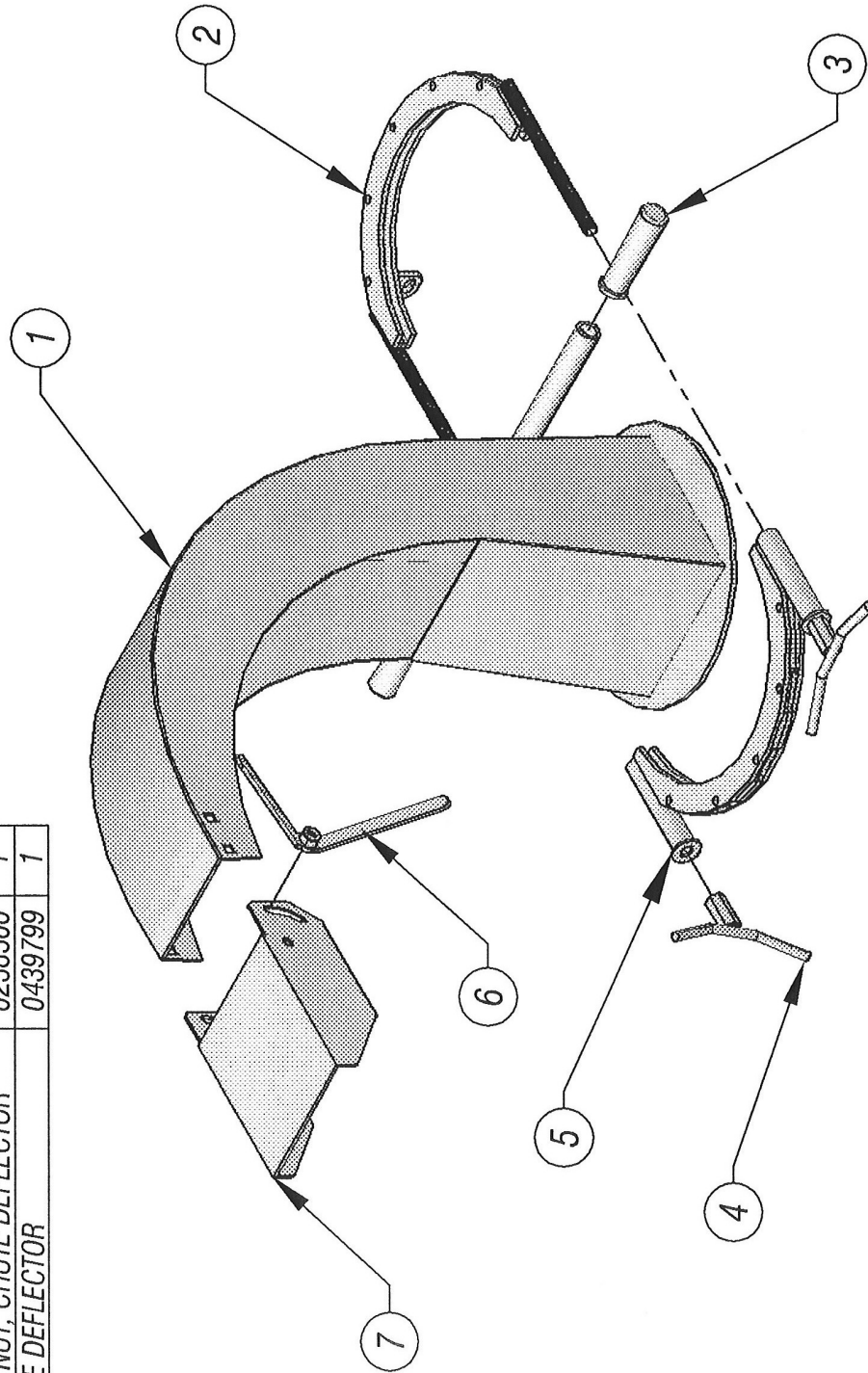


ITEM	DESCRIPTION	PART NO	QTY
1	YOKE, FEED ROLL	0274035	1
2	WHEEL, FEED ROLL YOKE GUIDE (UHMW)	0454107	8
3	INSERT, DOM 5/8 ODx1/8 WALLx 7/16 LG	STOCK	8
4	WASHER, 3/8 U.S.S. MODIFIED	0453328	8
5	HEX HD BOLT 3/8-16 x 1 1/4 LG	0346250	8
6	LOCK NUT, 3/8-16	0338102	8
7	BEARING, 2-BOLT FLANGED, 1 1/4 BORE	0303031	4
8	COUPLING, POWER FEED ROLLER	0213062	2
9	DRIVE MOTOR, HYDRAULIC	0330143	2
10	WHEEL, FEED ROLL - LOWER	0254106	1
11	WHEEL, FEED ROLL - UPPER	0254105	1

6235BXT CHIPPER - DWG #9

ISSUED: 01-21-2013

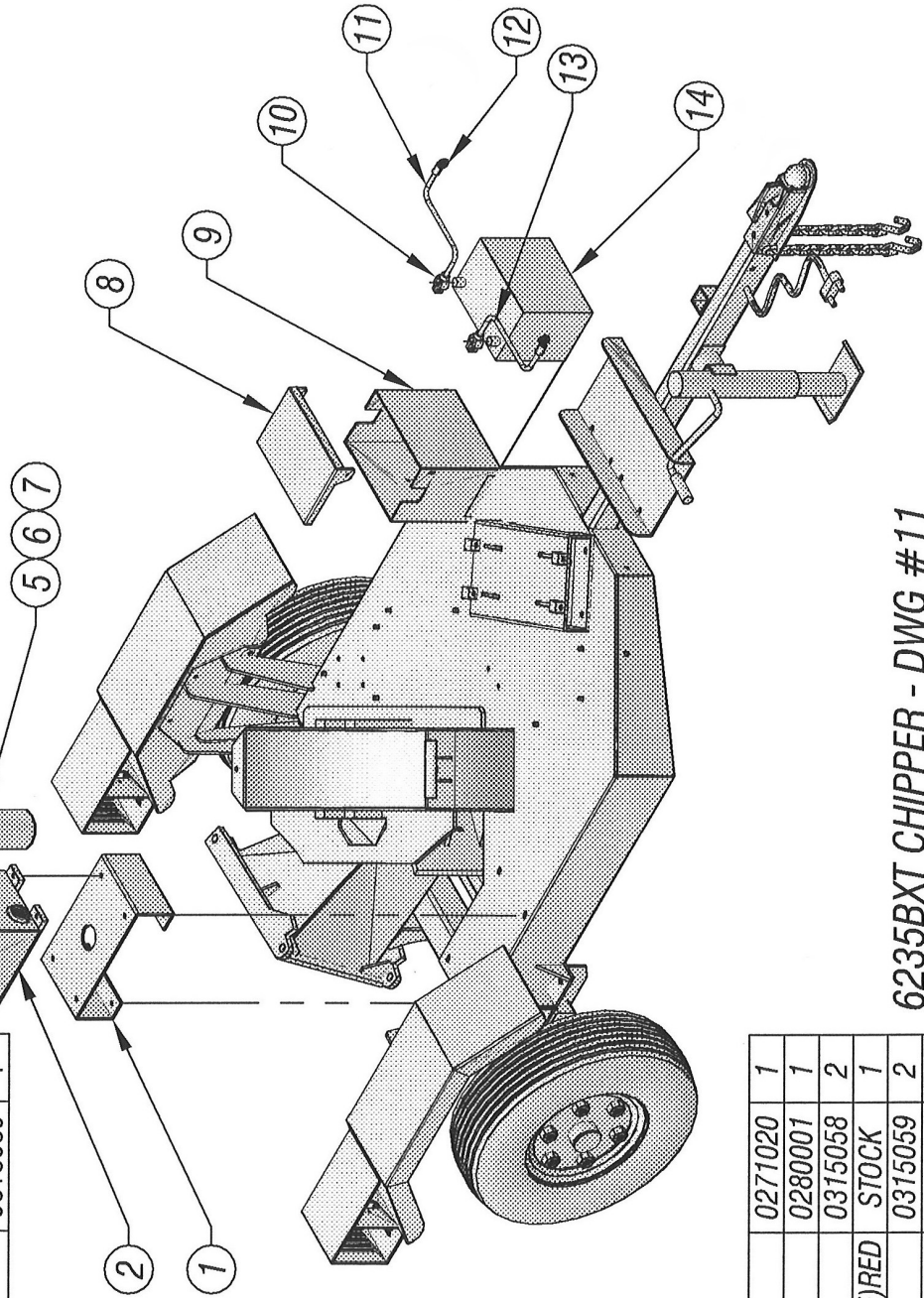
ITEM	DESCRIPTION	PART NO	QTY
1	CHUTE, EXHAUST	0226147	1
2	CLAMP, EXHAUST CHUTE - FRONT	0210147	1
3	RUBBER GRIP	0332009	2
4	WING NUT, EXHAUST CLAMP	0238504	2
5	CLAMP, EXHAUST CHUTE - REAR	0210148	1
6	WING NUT, CHUTE DEFLECTOR	0238500	1
7	CHUTE DEFLECTOR	0439799	1



6235BXT CHIPPER - DWG #10

ISSUED: 01-21-2013

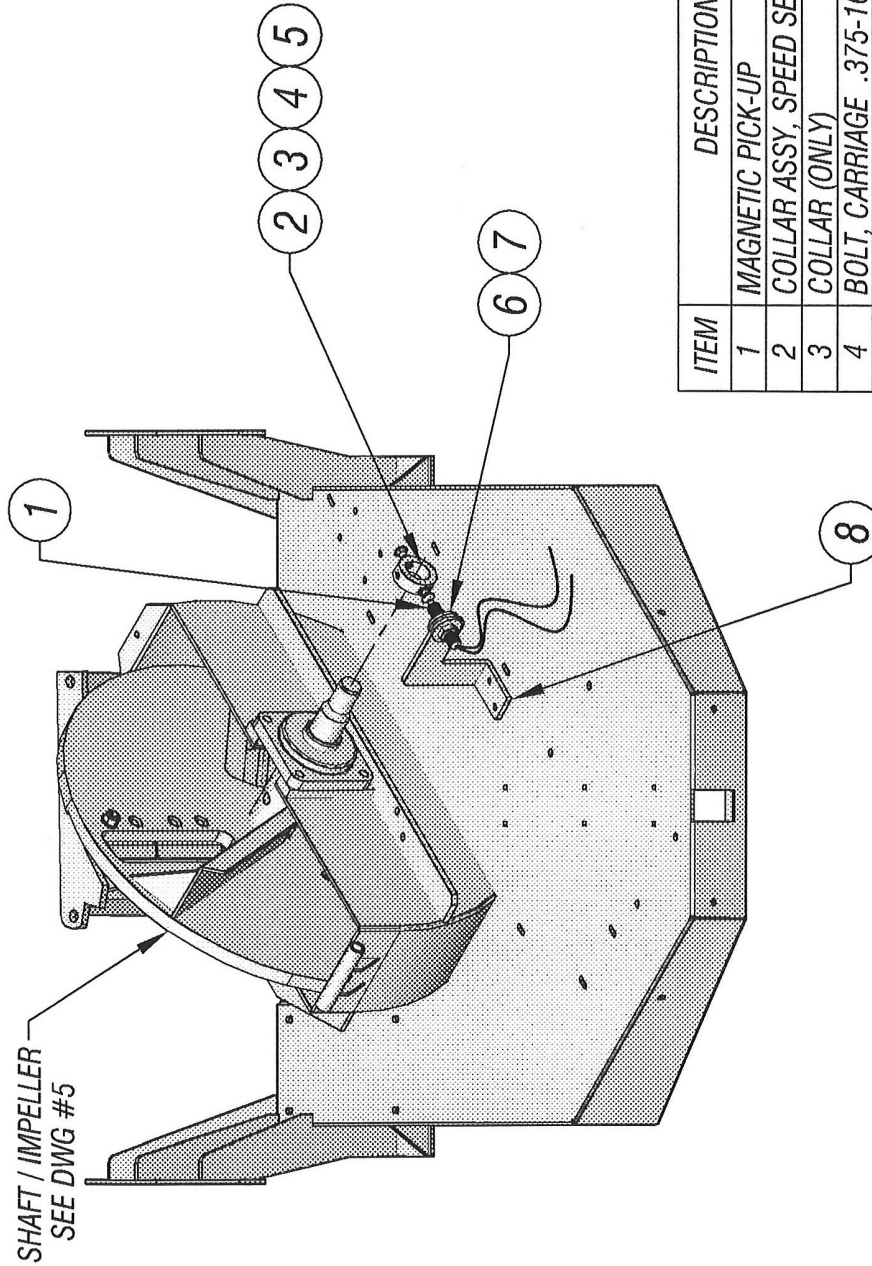
ITEM	DESCRIPTION	PART NO	QTY
1	MOUNT, HYDRAULIC OIL TANK	0476782	1
2	TANK, HYDRAULIC OIL-3.3 GAL.	0252110	1
3	CAP. OIL FILL LOCKING	0271024	1
4	CAP. OIL TANK	0371061	1
5	FILTER, HYD. WITH HOUSING	0318022	1
6	FILTER ELEMENT ONLY	0318023	1
7	FILTER HOUSING ONLY	0318039	1



8	COVER, BATTERY BOX	0271020	1
9	BOX, BATTERY	0280001	1
10	TERMINALS, TOP POST	0315058	2
11	BATTERY CABLE (POSITIVE)RED	STOCK	1
12	TERMINALS, EYELET	0315059	2
13	BATTERY CABLE (NEG.) BLACK	STOCK	1
14	BATTERY, 12 VOLTS	0315406	1

6235BXT CHIPPER - DWG #11

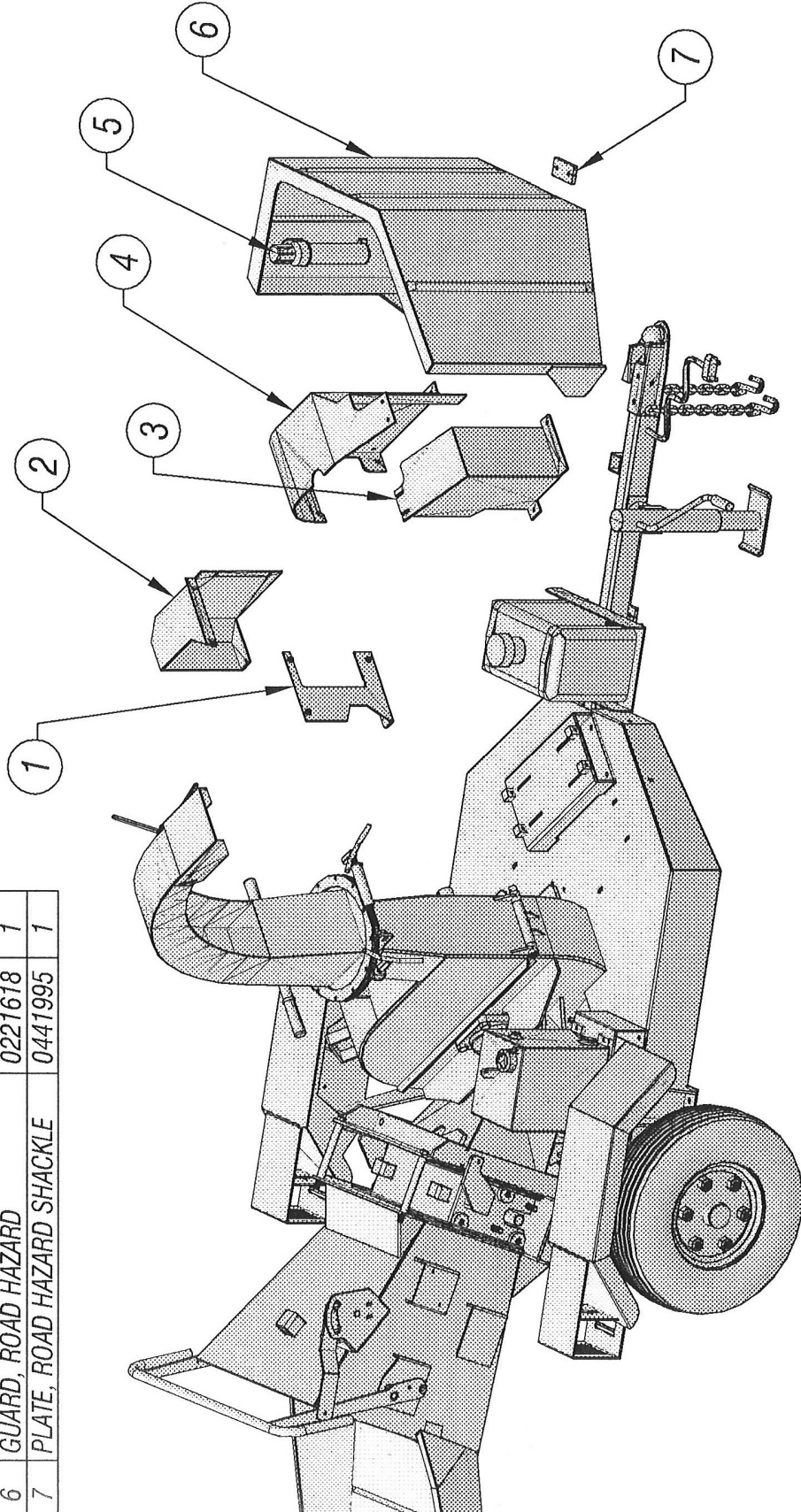
ISSUED: 01-21-2013



ITEM	DESCRIPTION	PART NO	QTY
1	MAGNETIC PICK-UP	0315128	1
2	COLLAR ASSY, SPEED SENSING	0111039	1
3	COLLAR (ONLY)	0411041	1
4	BOLT, CARRIAGE .375-16 UNC x 1" LONG	0346228	2
5	NUT, HEX JAM, .375-16 UNC	0338052	2
6	WASHER, FLAT	0353105	2
7	HEX NUT, .625-18	0338045	2
8	BRACKET, MAG. PICK-UP MOUNTING	0406878	1

MAG. PICK-UP FOR SPEED SENSING OPTION #0161284  
6235BXT CHIPPER - DWG #12

ISSUED:01-21-2013



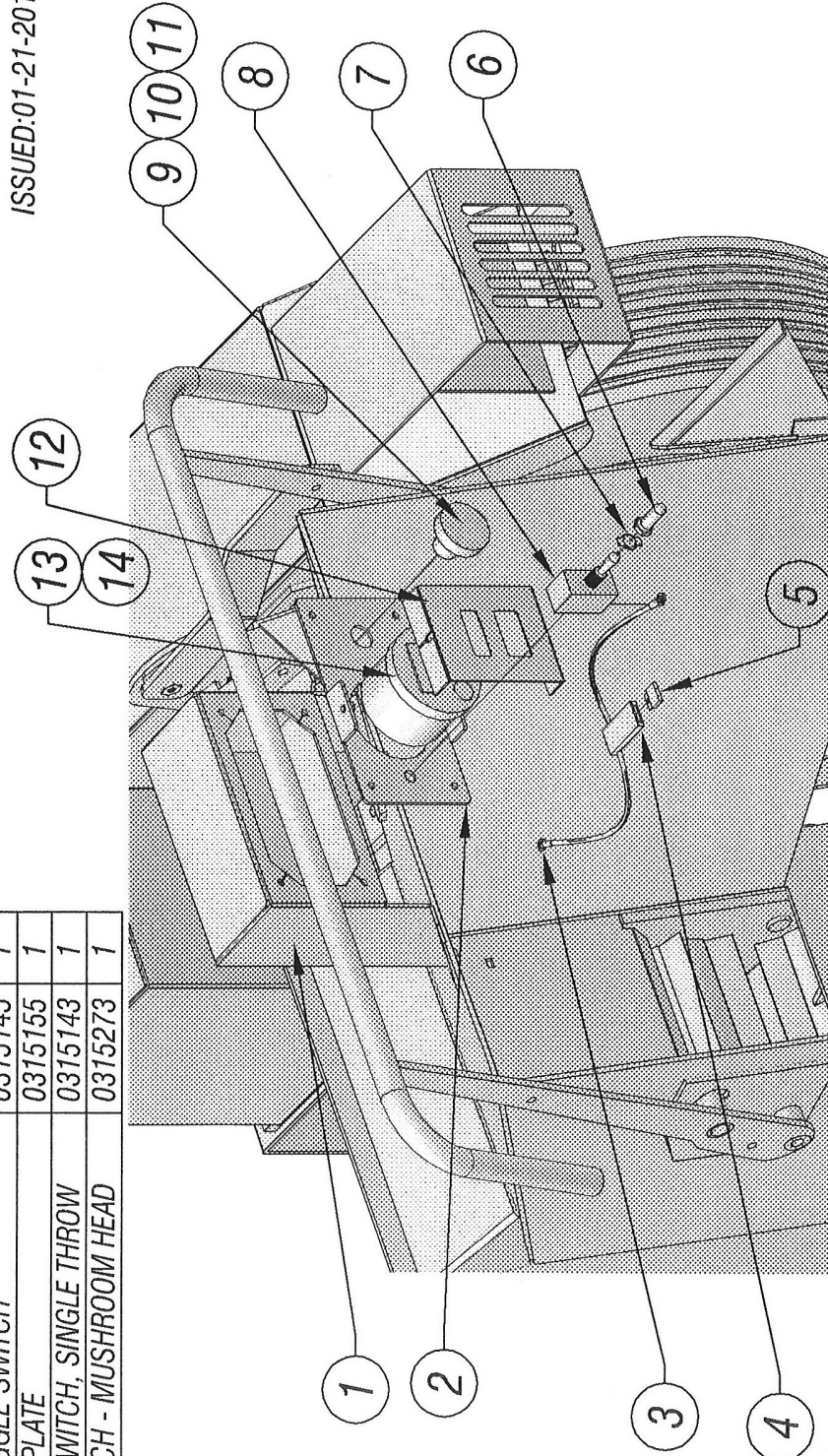
ITEM	DESCRIPTION	PART NO	QTY
1	PANEL, IMPELLER SHEAVE GUARD	0286753	1
2	GUARD, HYDRAULIC PUMP	0221611	1
3	GUARD, ENGINE SHEAVE	0221613	1
4	GUARD, IMPELLER SHEAVE	0221609	1
5	MANUAL HOLDER	0381057	1
6	GUARD, ROAD HAZARD	0221618	1
7	PLATE, ROAD HAZARD SHACKLE	0441995	1

6235BXT CHIPPER - DWG #13

http

ITEM	DESCRIPTION	PART NO	QTY	ITEM	DESCRIPTION	PART NO	QTY
1	MOUNT, SPEED SENSING GAUGE BOX	0276458	1	10	LEGEND PLATE - EMERGENCY STOP	0315275	1
2	PLATE, SPEED SENSING BOX - FRONT	0262258	1	11	CONTACT BLOCK	0315274	1
3	CONNECTOR, SWITCH	0315119	2	12	GUARD, SPEED SENSING GAUGE	0421398	1
4	HOLDER, FUSE	0315167	1	13	AUTOFEED TACHOMETER WITH WIRING	0315250	1
5	FUSE, (IN LINE)	0315168	1	14	SOLOINOD VALVE	0330106	1
6	BOOT, TOGGLE SWITCH	0315145	1				
7	ON / OFF PLATE	0315155	1				
8	TOGGLE SWITCH, SINGLE THROW	0315143	1				
9	KILL SWITCH - MUSHROOM HEAD	0315273	1				

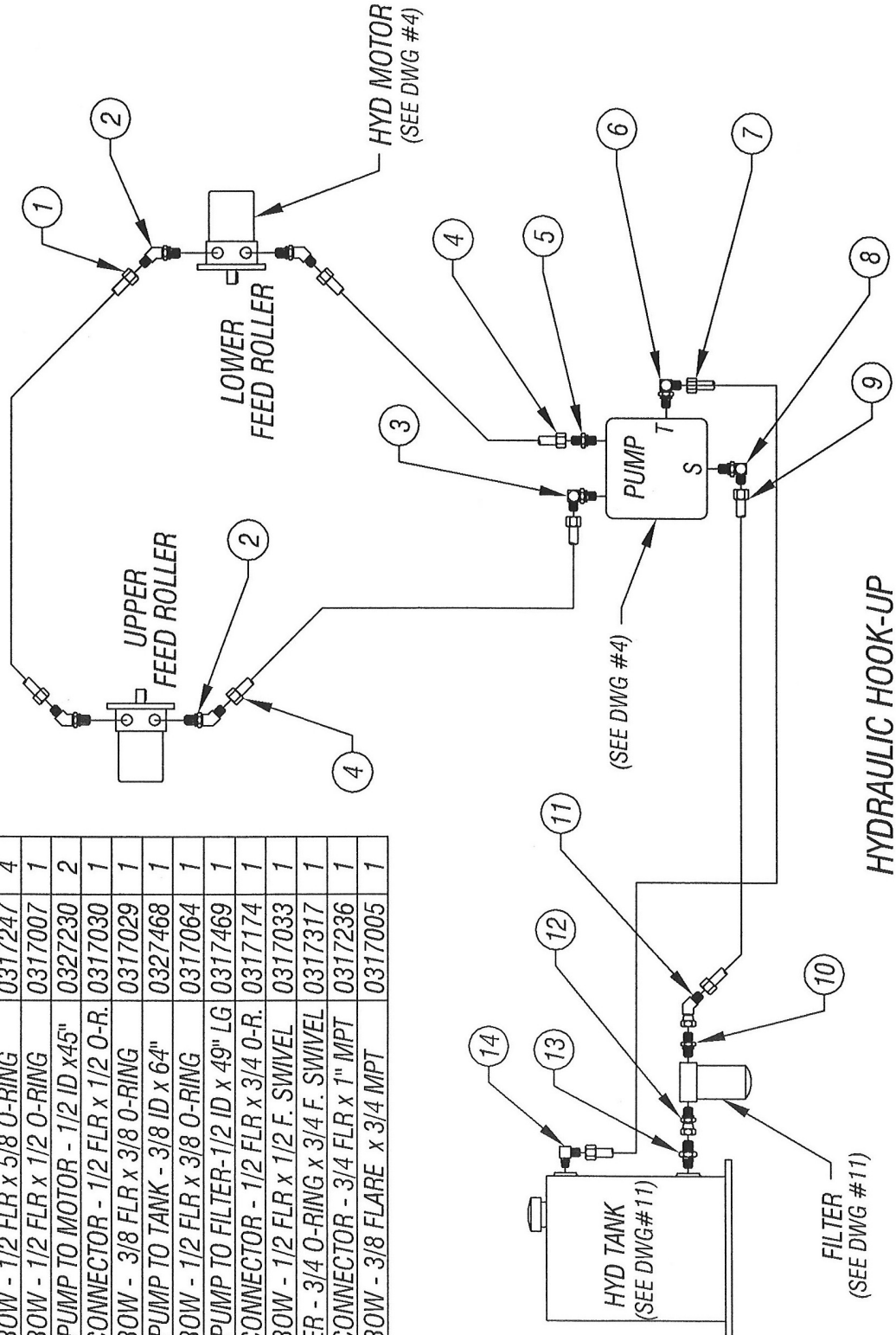
ISSUED:01-21-2013



GAUGE FOR SPEED SENSING OPTION #0161284  
 6235BXT CHIPPER - DWG #14

ISSUED: 01-21-2013

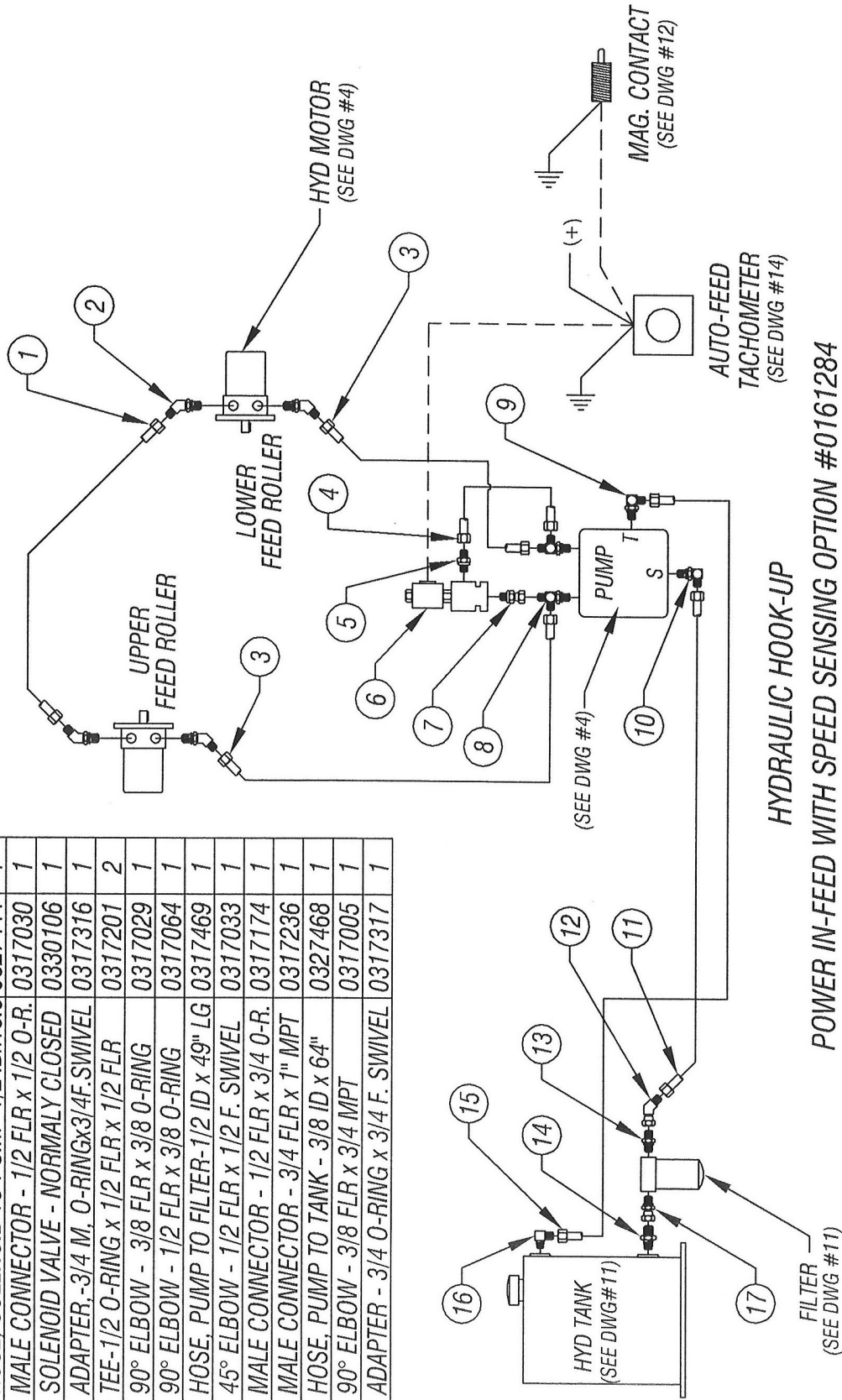
ITEM	DESCRIPTION	PART NO	QTY
1	HOSE, MOTOR TO MOTOR - 1/2 ID x 50"	0321152	1
2	45° ELBOW - 1/2 FLR x 5/8 O-RING	0317247	4
3	90° ELBOW - 1/2 FLR x 1/2 O-RING	0317007	1
4	HOSE, PUMP TO MOTOR - 1/2 ID x 45"	0327230	2
5	MALE CONNECTOR - 1/2 FLR x 1/2 O-R.	0317030	1
6	90° ELBOW - 3/8 FLR x 3/8 O-RING	0317029	1
7	HOSE, PUMP TO TANK - 3/8 ID x 64"	0327468	1
8	90° ELBOW - 1/2 FLR x 3/8 O-RING	0317064	1
9	HOSE, PUMP TO FILTER-1/2 ID x 49" LG	0317469	1
10	MALE CONNECTOR - 1/2 FLR x 3/4 O-R.	0317174	1
11	45° ELBOW - 1/2 FLR x 1/2 F. SWIVEL	0317033	1
12	ADAPTER - 3/4 O-RING x 3/4 F. SWIVEL	0317317	1
13	MALE CONNECTOR - 3/4 FLR x 1" MPT	0317236	1
14	90° ELBOW - 3/8 FLARE x 3/4 MPT	0317005	1



HYDRAULIC HOOK-UP  
 POWER IN-FEED ( STANDARD MACH. )  
 6235BXT CHIPPER - DWG #15

ISSUED: 01-21-2013

ITEM	DESCRIPTION	PART NO	QTY
1	HOSE, MOTOR TO MOTOR - 1/2 ID x 50"	0321152	1
2	45° ELBOW, 1/2 FLR x 5/8 O-RING	0317247	4
3	HOSE, PUMP TO MOTOR - 1/2 ID x 45"	0327230	2
4	HOSE, SOLENOID TO PUMP-1/2 IDx15.5	0327444	1
5	MALE CONNECTOR - 1/2 FLR x 1/2 O-R.	0317030	1
6	SOLENOID VALVE - NORMALLY CLOSED	0330106	1
7	ADAPTER, -3/4 M. O-RINGx3/4F.SWIVEL	0317316	1
8	TEE-1/2 O-RING x 1/2 FLR x 1/2 FLR	0317201	2
9	90° ELBOW - 3/8 FLR x 3/8 O-RING	0317029	1
10	90° ELBOW - 1/2 FLR x 3/8 O-RING	0317064	1
11	HOSE, PUMP TO FILTER-1/2 ID x 49" LG	0317469	1
12	45° ELBOW - 1/2 FLR x 1/2 F. SWIVEL	0317033	1
13	MALE CONNECTOR - 1/2 FLR x 3/4 O-R.	0317174	1
14	MALE CONNECTOR - 3/4 FLR x 1" MPT	0317236	1
15	HOSE, PUMP TO TANK - 3/8 ID x 64"	0327468	1
16	90° ELBOW - 3/8 FLR x 3/4 MPT	0317005	1
17	ADAPTER - 3/4 O-RING x 3/4 F. SWIVEL	0317317	1



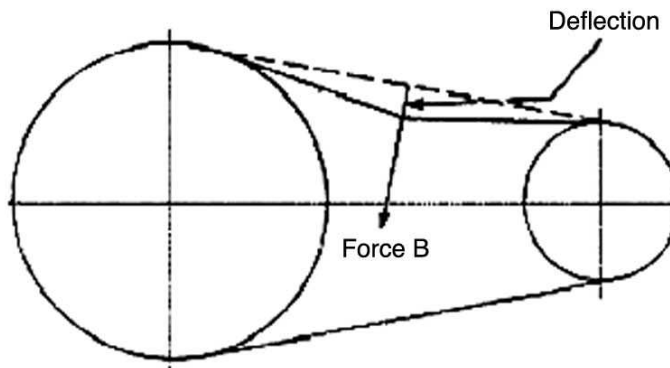
HYDRAULIC HOOK-UP  
 POWER IN-FEED WITH SPEED SENSING OPTION #0161284  
 6235BXT CHIPPER - DWG #16

Below is a quick reference chart for various "Flat Head Cap Screws" and the torque recommendations.

**VALUES ARE STATED IN FOOT POUNDS**

BOLT SIZE	Thds Per Inch	SAE Grade 5	SAE Grade 8
1/4	20	10	14
	28	---	---
5/16	18	19	29
	24	---	---
3/8	16	33	47
	24	---	---
7/16	14	54	78
	20	---	---
1/2	13	78	119
	20	---	---
9/16	12	114	169
	18	---	---
5/8	11	154	230
	11	---	---
3/4	10	257	380
	10	---	---
7/8	9	382	600
	9	---	---
1	8	587	700
	8	---	---

Drive Belt Tension Measurement by Deflection



Deflection should be 3/8" when 8-12 lbs. push is applied at "B"



# **CUSTOMER SUPPORT**

## **Contact Customer Support**

SALSCO

105 Schoolhouse Road

Cheshire, CT 06410 USA

800-872-5726, 203-271-1682

203-271-2596 (Fax)

[www.salsco.com](http://www.salsco.com)

## **Registration and Warranty Information**

[www.salsco.com/register](http://www.salsco.com/register)



105 School House Road  
Cheshire, CT 06410 U.S.A.  
800-872-5726, 203-271-1682, 203-271-2596 (Fax)  
sales@salsco.com, www.salsco.com