

# MODEL 6200990 MANUAL WINCH AND BOOM KIT

## INSTALLATION AND OPERATORS MANUAL



**WARNING**

You must thoroughly read and understand this manual before operating the equipment, paying particular attention to the Warning & Safety instructions.

# TABLE OF CONTENTS

- ORIGINAL INSTRUCTIONS -



This winch is designed to be installed on a model 555 Reel Grinder for lifting of reel type mower units **ONLY**. Any use other than this may cause personal injury and void the warranty.

To assure the quality and safety of your machine and to maintain the warranty, you **MUST** use original equipment manufactures replacement parts and have any repair work done by a qualified professional.

**ALL** operators of this equipment must be thoroughly trained **BEFORE** operating the equipment. Refer to the manual that came with your reel grinder for additional safety and operating instructions.

## TABLE OF CONTENTS

Safety Instructions .....	Pages 2-3
Installation .....	Page 4
Operating Instructions .....	Page 5
Exploded Parts List .....	Pages 6-9

Throughout this manual, the following safety symbols will be used to indicate the degree of certain hazards.



This symbol is used throughout this manual to call attention to the safety procedures.



The word **DANGER** indicates an immediate hazardous situation, which if not avoided, will result in death or serious injury.



The word **WARNING** indicates a potential hazardous situation, which if not avoided, could result in death or serious injury.



The word **CAUTION** preceded with a safety alert symbol indicates a potential hazardous situation which, if not avoided, may result in minor or moderate injury.

**Read carefully before attempting to operate or service your winch! Failure to comply with instructions could result in personal injury and/or property damage!**

**⚠ WARNING**

**FOR YOUR OWN SAFETY AND THAT OF OTHERS, THIS EQUIPMENT MUST BE USED AS RECOMMENDED BY THE MANUFACTURER. FAILURE TO HEED THE FOLLOWING RECOMMENDATIONS COULD ENDANGER YOUR LIFE.**

1. Maximum lifting capacity is 400 pounds (180 kg.) in single line winch operation. **DO NOT ATTEMPT TO MOVE LOADS GREATER THAN THESE RATINGS.**
2. **NEVER CARRY** personnel on the hook or the load.
3. **NEVER MOVE A LOAD** with this winch until all personnel are clear.
4. **NEVER HOOK THE WIRE ROPE BACK ON ITSELF. USE THE SPREADER BAR ASSEMBLY.** Hooking the wire rope back on itself creates an unacceptable strain on the wire rope.
5. **DO NOT ALLOW** unqualified personnel to operate this unit.
6. **KEEP CLEAR OF WINCH WIRE ROPE AND HOOK WHEN OPERATING WINCH. DO NOT ATTEMPT** to guide wire rope by hand as it rewinds.
7. **DO NOT** use the wire rope as a ground for welding.
8. **NEVER TOUCH** a welding electrode to the wire rope.
9. **WHEN SPREADER BAR ASSEMBLY IS USED** be sure it is properly seated in the saddle of the hook.
10. **AVOID** excessive inching and quick reversals of load.
11. **BE SURE** that the power supply is disconnected before performing maintenance and repair procedures.
12. **DO NOT OPERATE** this unit if it is not functioning properly.
13. **MAINTAIN A MINIMUM OF 4 TURNS OF WIRE ROPE** around the winch drum to prevent the wire rope from pulling off under load.
14. **KEEP WINCHING AREA CLEAR.** Do not allow people to remain in the winching area. Do not stand between the winch and load.
15. **INSPECT WIRE ROPE FREQUENTLY.** A frayed wire rope with broken strands should be replaced immediately. Never replace the wire rope with rope of any kind or with wire rope other than the type and size specified in the repair parts section of this manual.
16. **USE HEAVY LEATHER GLOVES** when handling the wire rope to eliminate the possibility of cuts or scratches from burrs and slivers from broken strands.
17. **ALLOW WINCH TO COOL DOWN FREQUENTLY,** as the motor is designed for intermittent duty only. When the metal motor housing is hot to touch, it is time to let the winch cool down. (Electric winch only).
18. **DO NOT OPERATE WINCH WHEN UNDER THE INFLUENCE OF DRUGS, ALCOHOL, OR MEDICATION.**
19. **DO NOT USE WINCH TO HOLD LOADS IN PLACE.** Use other means of securing loads, such as tie down straps.
20. **USE ONLY FACTORY APPROVED SWITCHES, REMOTE CONTROLS AND ACCESSORIES.** Use of non-factory approved components may cause injury or property damage and could void your warranty. (Electric winch only).
21. **DO NOT MACHINE OR WELD ANY PART OF THE WINCH.** Such alterations may weaken the structural integrity of the winch and could void your warranty.
22. **DO NOT OPERATE THIS WINCH OUT DOORS OR IN A CORROSIVE OR EXPLOSIVE ENVIRONMENT.**

# INSTALLATION

- ORIGINAL INSTRUCTIONS -

These instructions are designed for technicians who have the necessary knowledge and skills to reliably test and repair the Neary Technologies Model 555 Reel Grinder. For those without that background, service can be arranged through your local distributor. **READ ALL INSTRUCTIONS BEFORE STARTING.**

## INSTALLING WINCH AND BOOM

To install the Boom Housing Weldment to the right rear side of the grinder, attach the Boom Housing Weldment with the four socket head cap screws (B371611) 3/8-16 x 1", the four 3/8" flat washers (K370001), and the four lock washers (K371501) from the Bag Assembly. See FIG. 2 and Page 6 Exploded Assembly.

Install the Hook and Cable Assembly through the two pulleys on the Boom Assembly.

Install the Boom Assembly with cable into the Boom Housing Weldment. Feed the cable down the center of the vertical tube of the Boom Weldment.

Install the third Pulley (3709795) with (B372801) 3/8-16 x 1-3/4 Hex Head Cap Screw, (K370001) 3/8 Flat Washer (2) and 3/8-16 Locknut (J377100) into the bottom of the Boom Housing Weldment. See Page 6 Exploded Assembly.

Install the Winch 3708578 using (B371201) 3/8-16 x 3/4" Hex Head Cap Screw (2), (K371501) 3/8 Lockwasher (2), and (K370001) 3/8 Flat Washer (2). Install the winch handle.

Loop the cable around the lower pulley and install the cable on the winch per the winch instructions included with the kit.

Replace the lift handle (6329174) on the boom side of the rear slide up guard door with the included Short Handle (3706117) using the existing (2) 1/4-20 x 1/2 Button Head Socket Cap Screws (B250816), and (2) 1/4-20 Nylon Locknuts (J257100) that were used to fasten the old handle. See FIG. 3.



FIG. 1

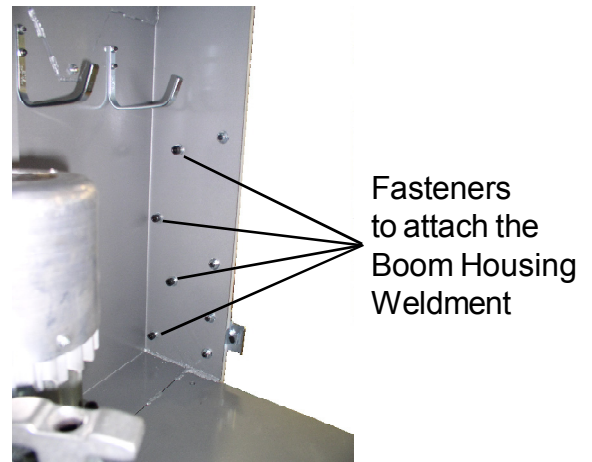


FIG. 2

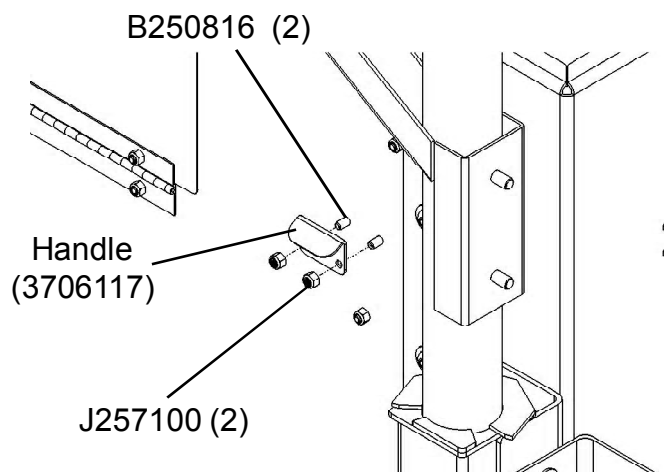


FIG. 3

### **LIFTING THE REEL INTO POSITION**

Position the reel at the rear of the grinder on the floor so that the front of the mower faces in the same direction as the front of the machine. See FIG. 3. Hook the winch spreader bar onto the reel. The clamps on the spreader bar should be spaced evenly along the mower, so they do not slide as the mower is being raised. Stand to the side of the mowing unit and at arms length, winch the mowing unit to height. Then guide it into position.



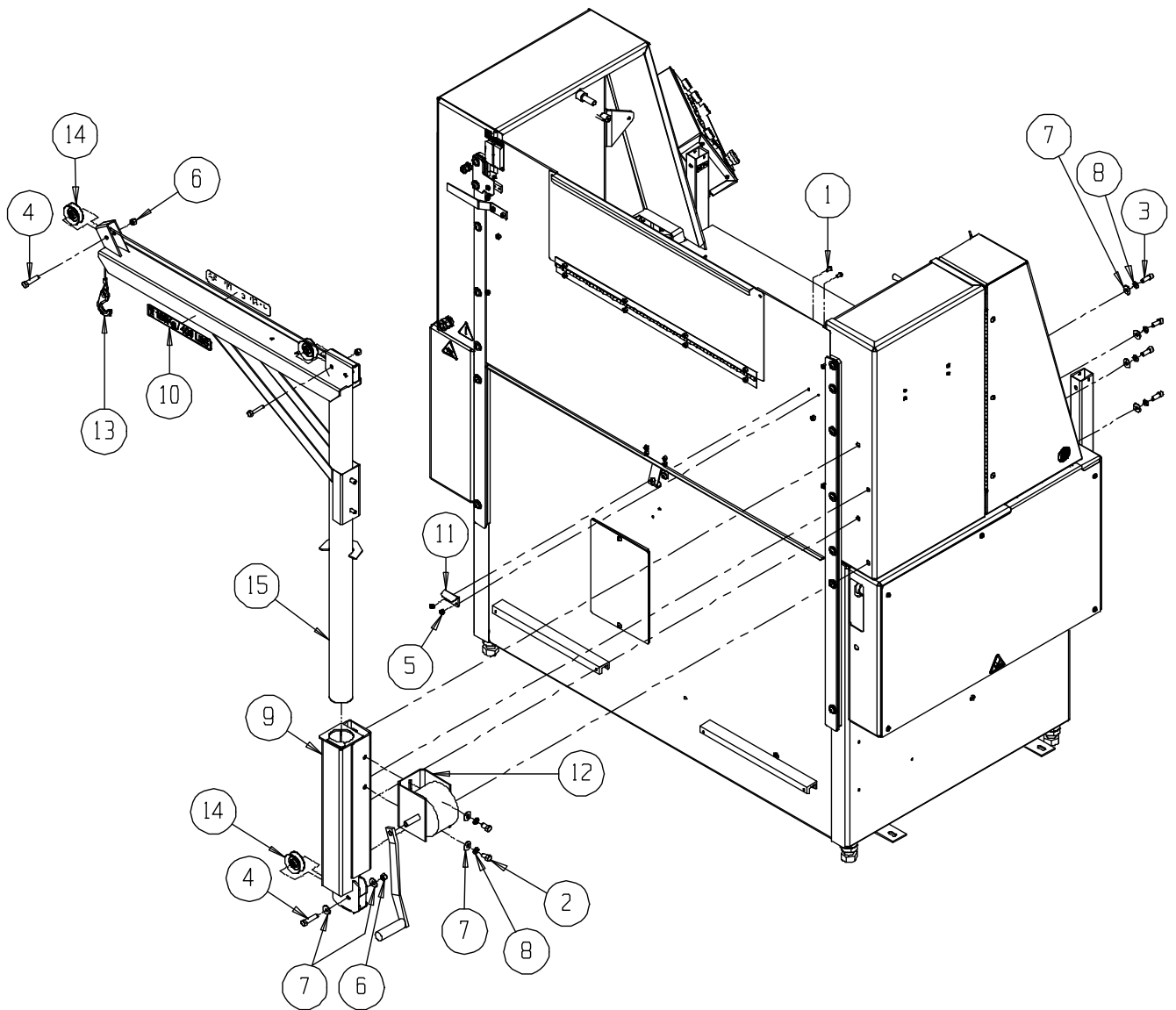
**FIG. 3**

### **⚠ WARNING**

**THE OPERATOR SHOULD BE POSITIONED AWAY FROM THE REEL. DO NOT STAND UNDERNEATH THE REEL AS IT IS BEING RAISED. GUIDE REEL AT ARMS LENGTH.**

# EXPLODED VIEW

- ORIGINAL INSTRUCTIONS -

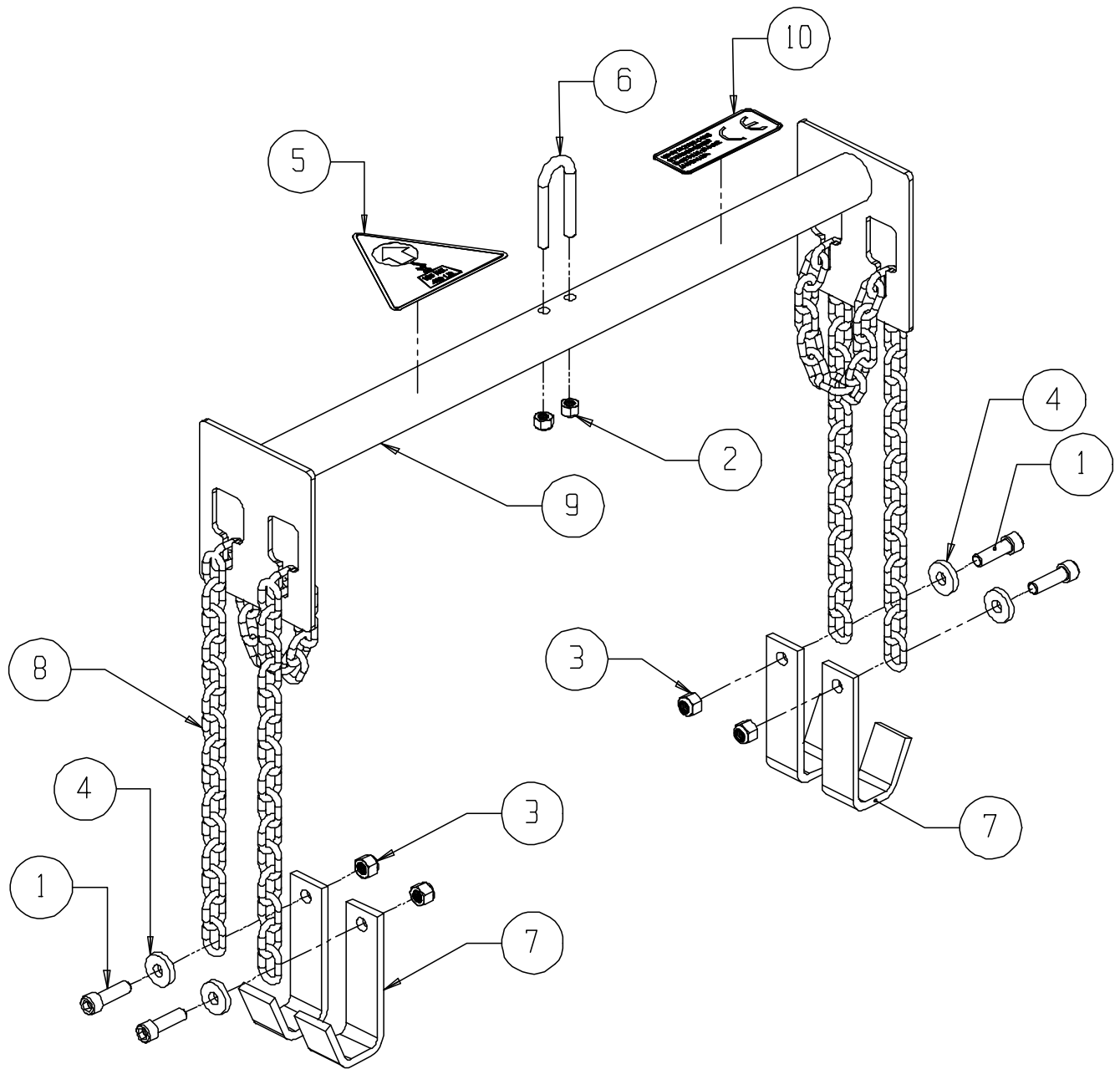


<u>DIAGRAM NUMBER</u>	<u>PART NUMBER</u>	<u>DESCRIPTION</u>
1 .....	B250816 .....	Button Head Socket Cap Screw 1/4-20 x 1/2 Long
2 .....	B371201 .....	Hex Head Cap Screw 3/8-16 x 3/4Long
3 .....	B371611 .....	Socket Head Cap Screw 3/8-16 x 1 Long
4 .....	B372801 .....	Hex Head Cap Screw 3/8-16 x 1-3/4 Long
5 .....	J257100 .....	1/4-20 Full Nylon Locknut
6 .....	J377100 .....	3/8-16 Full Nylon Locknut
7 .....	K370001 .....	3/8 Flat Washer
8 .....	K371501 .....	3/8 Split Lockwasher
9 .....	55484 .....	Boom Housing Weldment
10 .....	3706111 .....	Boom Capacity Decal
11 .....	3706117 .....	Door Handle (Short)
12 .....	3708578 .....	Winch
13 .....	3709407* .....	Hook and Cable Assembly
14 .....	3709795 .....	Pulley
15 .....	6059527 .....	Boom Weldment

\*Hook & Cable Assembly is packed in carton. Install as shown (cable runs down middle of boom tube).

# EXPLODED VIEW

- ORIGINAL INSTRUCTIONS -





<b><u>DIAGRAM NUMBER</u></b>	<b><u>PART NUMBER</u></b>	<b><u>DESCRIPTION</u></b>
1 .....	B372011 .....	Socket Head Cap Screw 3/8-16 x 1-1/4 Long
2 .....	J317100 .....	5/16-18 Nylon Locknut Full
3 .....	J377100 .....	3/8-16 Nylon Locknut Full
4 .....	3599028 .....	Flat Washer .375 x 1.0 x .188 Thick
5 .....	3708456 .....	Load Capacity Warning Decal
6 .....	3709316 .....	U-Bolt 5/16-18 x 3
7 .....	6009102 .....	Grab Hook
8 .....	6329061 .....	Chain 44.6"
9 .....	6509590 .....	Spreader Bar Weldment
10 .....	80432 .....	Spreader Bar Decal