

6200950 BED KNIFE FACING TOOL

OWNERS MANUAL



WARNING

You must thoroughly read and understand this manual before operating the equipment, paying particular attention to the Warning & Safety instructions.

SAFETY INSTRUCTIONS



Safety Awareness Symbols are inserted into this manual to alert you to possible Safety Hazards. Whenever you see these symbols, follow their instructions.



The **Warning Symbol** identifies special instructions or procedures which, if not correctly followed, could result in personal injury.

The **Caution Symbol** identifies instructions or procedures which, if not strictly observed, could result in damage to or destruction of equipment.

1. **KEEP GUARDS IN PLACE** and in working order.
2. **REMOVE WRENCHES AND OTHER TOOLS.**
3. **KEEP WORK AREA CLEAN.**
4. **DON'T USE IN DANGEROUS ENVIRONMENT.** Don't use facing tool in damp or wet locations. Machine is for indoor use only.
5. **KEEP ALL VISITORS AWAY.** All visitors should keep a safe distance from work area.
6. **DON'T FORCE THE FACING TOOL.** It will do the job better and safer if used as specified in this manual.
7. **WEAR PROPER APPAREL.** Wear no loose clothing, gloves, neckties, or jewelry which may get caught in moving parts. Nonslip footwear is recommended. Wear protective hair covering to contain long hair.
8. **ALWAYS USE SAFETY GLASSES.**
9. **DISCONNECT FROM THE AIR SUPPLY BEFORE SERVICING.**
10. **REDUCE THE RISK OF UNINTENTIONAL STARTING.** Make sure the throttle lever is released before connecting to an air supply.
11. **CHECK DAMAGED PARTS.** A guard or other part that is damaged or will not perform its intended function, should be properly repaired or replaced.
12. **KNOW YOUR EQUIPMENT.** Read this manual carefully. Learn its application and limitations as well as specified potential hazards.
13. **KEEP ALL SAFETY DECALS CLEAN AND LEGIBLE.** If safety decals become damaged or illegible for any reason, replace immediately. Refer to replacement parts illustrations in this manual for the proper location and part numbers of safety decals.
14. **DO NOT OPERATE THE FACING TOOL UNDER THE** influence of drugs, alcohol, or medication.



This tool is intended for grinding the front face of Bedknives **ONLY**. Any use other than this may cause personal injury and void the warranty.

To assure the quality and safety of your tool and to maintain the warranty, you **MUST** use original equipment, manufacturers replacement parts and have any repair work done by a qualified professional.

ALL operators of this equipment must be thoroughly trained BEFORE operating this equipment.

Do not use compressed air to clean dust from the tool.



BEFORE OPERATING OR CONNECTING TO AN AIR SUPPLY, READ THE PNEUMATIC GRINDER MANUAL INCLUDED.

NOTE: YOU MUST SUPPLY AN AIR HOSE CONNECTOR WITH 1/4-18NPT THREAD.

INTRODUCTION

The Model 6200950 Bed Knife Facing Tool allows an operator to dress the front face of a bed knife without removing the reel or bed knife from the mowing unit. (See Fig. 4)



THE REEL ON THE BED KNIFE MUST ROTATE FREELY. IT MAY BE NECESSARY TO LOOSEN THE REEL TO BEDKNIFE LOAD.

BED KNIFE ADJUSTMENT

To dress the bed knife you must match the grinding disc surface on the grinder to the face of the bed knife. To accomplish this loosen the two socket head screws on the guide cover. (See Fig 1 Item A.) Adjust the guide cover back and forth (See Fig1 Item B) until the grinding disc is matching the face of the bed knife. When this has been achieved use the 1/8 allen key to retighten the two socket head screws.

GRINDING HEAD ADJUSTMENTS

1. The grinding head can be loosened and rotated 45 degrees in either direction in relationship to the grinding body. To achieve this, loosen the Socket head screws on back of the grinding head (See Fig 2) with the 1/8 allen key provided with the unit. When loose, rotate the grinding head to the position desired and retighten the screws. If more adjustment is needed, remove the guide cover, grinding disk, and support. Remove the 3 screws that hold the rotate plate and rotate to new desired position. (See page 5)

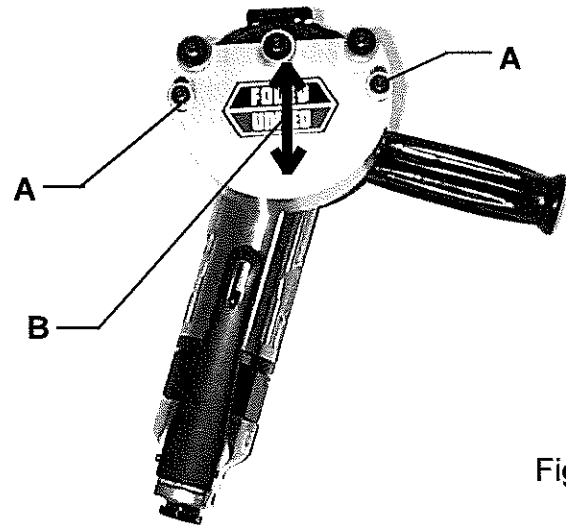


Fig. 1

Screws for Rotate

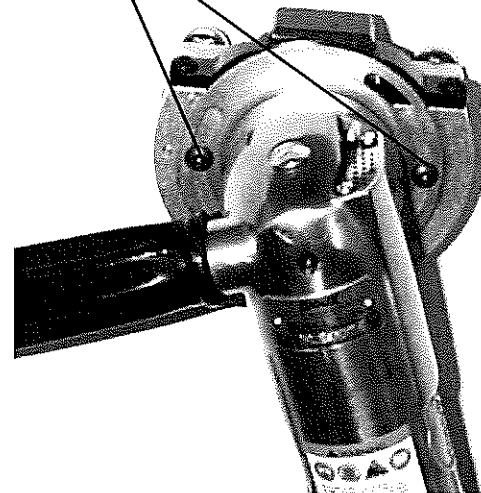


Fig. 2

GRINDING HEAD ADJUSTMENTS- CONT

2. The Guide can also be used to limit the amount of stock that is removed. To achieve this loosen the screws on the ends of the Guide and move it in and out until the sides of the guide are even with the grinding disc. (See Fig. 3) When in positioned retighten the screws. This will allow the grinding disc to only grind off a small amount. The sides of the guides will contact the bedknife and act as a depth gauge. If the grind is too heavy move the guide forward. If the grind is too light move the the guide back.

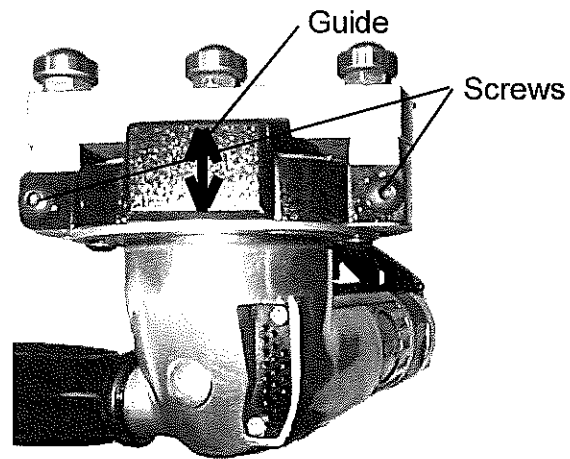


Fig. 3

GRINDING INSTRUCTIONS

Some operators place a coating of silicone lubricant along the bed knife surface to help the bed knife facing tool slide easier across the bed knife face. Make one complete pass along the bed knife surface. Inspect the surface and if necessary, repeat by making one long smooth pass from one end of the bed knife to the other. This process dresses the edge without the need of removing the reel. Continue this process until the face of the bed knife has been satisfactorily ground.

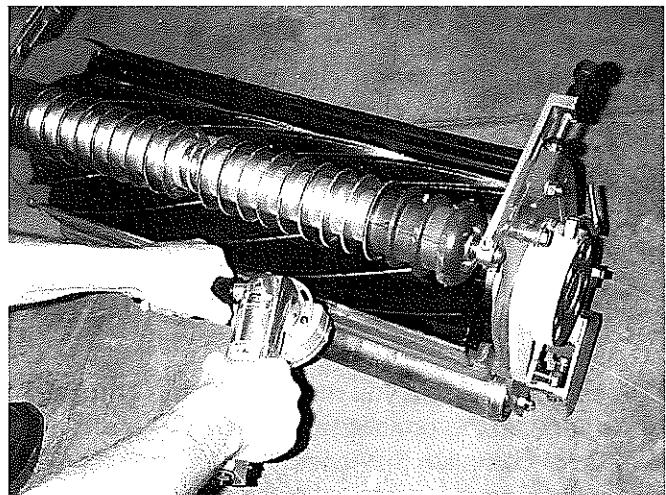


Fig. 4

GRINDING DISC REPLACEMENT

1. Loosen the two guide cover socket head screws (Fig. 1 Item A) and remove the guide cover.
2. Remove the bedknife Guide.
3. Loosen and remove the flange nut using the spanner and stamped wrenches that came with your unit (See Fig. 5).
4. Change discs and place the flange nut back on the unit. Firmly tighten the flange with the spanner and stamped wrenches.
5. Remount the guide cover and guide, firmly tighten it in place. Make any adjustments needed (See page 3).

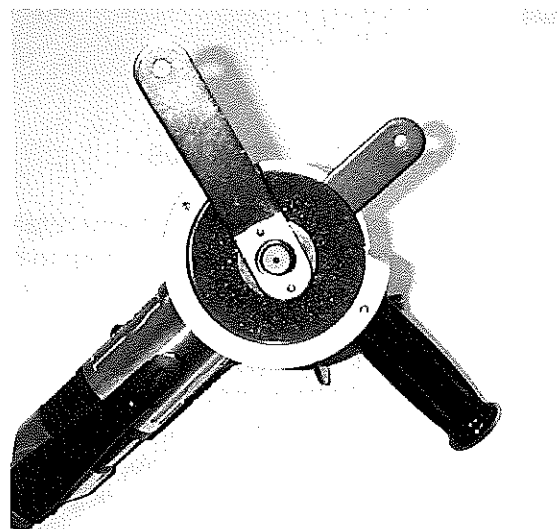


Fig. 5

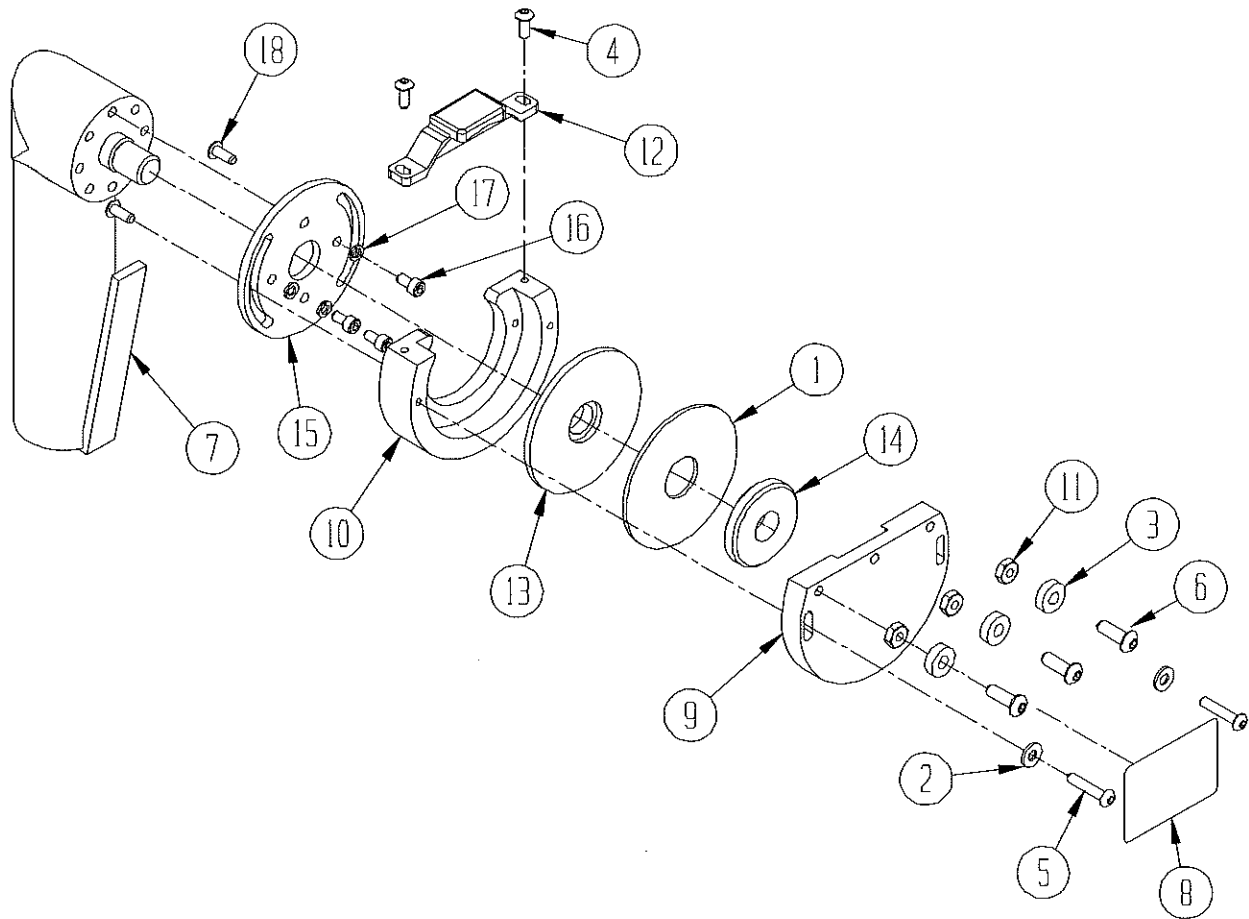


DIAGRAM NUMBER	PART	DESCRIPTION	QUANTITY
1	3708830	Grinding Disc	2
2	K190001	#10 Flat Washer	2
3	3708829	Ball Bearing - .63" OD	3
4	B190813	#10-24 Button Head Socket Screw x 1/2" long	2
5	B191413	#10-24 Button Head Socket Screw x 7/8" long	2
6	B251016	1/4 - 20 Button Head Socket Screw x 5/8" long	3
7	3708831	Grinder Pneumatic	1
8	6209065	Decal	1
9	6209060	Cover	1
10	6209064	Body	1
11	J252000	Hex Nut (Spacer) 1/4 - 20 Hex Nut Jam	3
12	6209061	Guide	1
13	6209062	Grinding Disc Support	1
14		Nut (Part of Grinder)	1
15	6209063	Facer Rotate Plate	1
16	B191011	#10-24 Button Head Socket Screw x 5/16" Long	3
17	K191501	#10 Lockwasher	3
18	B190613	#10-24 Button Head Socket Screw x 3/8" long	2
--	R000856	1/8 Allen Wrench (Not Shown)	1

