

Salsco, INC.
LEADER BY DESIGN

MADE IN THE U.S.A

OPERATORS AND PARTS MANUAL
62 SERIES HYDRAULIC FEED CHIPPERS



MANUFACTURER OF OUTDOOR POWER EQUIPMENT

Products for Turf & Lawn care, Rental, Construction, Tree care, Wood Processing, Nursery & Farm Industries

Other Salsco Equipment

**3-1/2" - 18", Gas, Diesel, and P.T.O, Wood/Brush Chippers
Chipper Shredder Vacuums - Tailgate & Truckloader Vacuums
Strawblowers - Slicer Seeder**

***Quality of Workmanship, Innovative
Design, Built to Last!***

105 School House Road
Cheshire, CT 06410 U.S.A.
800-872-5726, 203-271-1682, 203-271-2596 (Fax)
sales@salsco.com, www.salsco.com

TABLE OF CONTENTS

62 SERIES, HYDRAULIC FEED CHIPPERS

COVER & TABLE OF CONTENTS.....Pages 1 – 2

STATEMENT OF FACT Page 3

SPECIFICATIONS & FEATURESPage 4

SAFETY & OPERATING INSTRUCTIONSPages 6 - 9

SERVICE & MAINTENANCE INSTRUCTIONSPage 10

PARTS DIAGRAMSPages 11 - 26

TORQUE CHARTSPage 27

WARRANTY POLICY & PROCEDUREPage 28

COPY OF WARRANTY CLAIM FORM.....Pages 29 – 30

COPY OF WARRANTY CARD AND DEALER DELIVERY REPORT.....Page 31

SERVICE SCHEDULE LOGPage 32

SALSCO, INC.

105 School House Road
Cheshire, CT 06410 USA
800-872-5726, 203-271-1682
203-271-2596 (Fax)
www.salsco.com, sales@salsco.com

STATEMENT OF FACT

You have just purchased the highest quality, most dependable, chipper on the market today. This unit has the ability to meet exact standards and perform for years with minimum downtime. **HOWEVER**, it cannot read nor will it understand this manual no matter how long you leave it on top of the machine.

It is your responsibility to read and understand this manual; it is also your responsibility to be certain this information is passed along to anyone who is expected to operate this equipment. Should you choose not to read, understand and pass along the information provided you, please expect equipment failure and possible injuries to persons around this equipment.

For the safety of the operator, it is imperative that this manual is carefully read and understood.

Once you have read this manual, it is your responsibility to be sure that all new operators read and understand this manual, especially all cautions stated.

As a manufacturer of equipment, we have a responsibility to design a safe piece of equipment. **NOTE:** The important safeguards and instructions in this manual are not meant to cover all possible conditions and situations that may occur. It must be understood that common sense, caution, and care are factors, which cannot be built into any product. These factors must be supplied by the person(s) caring for and operating this equipment.

ONLY YOU CAN PREVENT ACCIDENTS!

SPECIFICATIONS & FEATURES

SPECIFICATIONS – 62 SERIES - HYDRUALIC FEED CHIPPERS

ENGINE:	35HP Briggs & Stratton, 40HP Subaru, 36HP Kohler
FUEL TANK:	6 Gallon, Carbon Canister Fuel Tank.
BATTERY:	12 Volt, CCA650, Automotive type.
CLUTCH & BELT:	Centrifugal Clutch, Triple band cogged V-Belt.
INFEED CHUTE:	24" x 29" Opening at the outer edge of the infeed tray.
INFEED OPENING:	7" x 8" Opening to Dual infeed rolls. Infeed handle is easily accessible from either side of unit. (Reverse/Neutral/Slow/Fast)
INFEED ROLLS:	Quantity - 2. 12" long x 5-1/2" diameter, weighted, replaceable blades, fully welded.
CHIPPER DISC HOUSING:	7 Gauge thick steel impeller housing is vented to provide more air flow for chip exhaust.
CHIPPER DISC:	1" Thick x 29" Diameter, 6-welded and gusseted exhaust paddles, fully balanced. 210 Lbs.
CHIPPER BLADES:	Qty. 6, double edge chip blades.
BEARINGS:	4-Bolt, Heavy Duty, cast iron, greaseable & self centering.
BED KNIFE:	1/2" Thick Steel, replaceable, sharpenable & adjustable.
EXHAUST CHUTE:	360-degree Swivel Exhaust, 11 gauge steel, no tools necessary to adjust. Easy adjust exhaust flap.
HYDRAULIC COMPONENTS:	Hoses-2,500 PSI Operating & 10,000 PSI burst. (2) Motors-23.8 displacement. (1) 6 G.P.M. Pump.
TRAILER FRAME & TONGUE:	7 gauge steel frame, fully welded and gusseted for strength. Top Wind 2,000 lb. Jack, 2" Ball Coupler.
AXLE & WHEELS:	2,200 lb. capacity, Tor-Flex Axle, ST205/75R14 Tires, D.O.T. Light Package.
OPTIONS:	Speed Sensing
GUARDS/DECALS:	All Moving Parts Guarded. Full Set of Safety Decals.
PAINT:	Orange, Polyester Powder Coat Paint Provides Excellent Outdoor Weatherability and Offers Protection Against Ultra Violet Discoloration. All Parts Painted Separately.
DIMENSIONS:	Length: 11' Width: 5'6" Height: 6'9" Weight: 1640 LBS.

REV. 1/2013

CAUTIONS

READ THOROUGHLY THE OPERATOR SAFETY INSTRUCTIONS ON THE FOLLOWING THREE PAGES, WHICH ARE THE AMERICAN NATIONAL STANDARD OF POWERED SHREDDERS/GRINDERS, SAFETY SPECIFICATIONS PROVIDED BY ANSI AND THE O.P.E.I.

THE FOLLOWING CAUTIONS ARE PROVIDED BY SALSCO AS A QUICK REFERENCE ONLY AND ARE NOT MEANT TO REPLACE THE PRECAUTIONS ON THE FOLLOWING PAGES.

1. **ALWAYS** use protective eyewear when machine is in operation.
2. **ALWAYS** use gloves and wear ear protection when machine is in operation.
3. **NEVER** put hands, legs or any part of your body into or near Chipper intake or discharge openings.
4. **NEVER** run with guards removed.
5. **ALWAYS** allow machine to cool off, remove key and put engine in neutral before attempting any maintenance, or repair.
6. **BE SURE** machine has stopped completely, engine is off, key is removed and spark plug is disconnected before attempting any service or maintenance.
7. **NEVER** stand in front of chipper infeed hopper. It is possible for a chip or piece of wood to be thrown out.
8. **BE SURE** the machine is parked on a dry level surface before starting operation.
9. **DO NOT** operate with loose clothing or long unrestrained hair. Be sure vines and branches are not wrapped around your body parts.
10. **DO NOT** operate on ice or any other slippery surface. Be sure area around machine is clear and clean. You do not want to trip into the machine.
11. **NEVER** leave machine running unattended, especially around youngsters or persons not instructed in the safe operation of this machine.
12. **READ** and understand federal guidelines provided with this manual.

BRUSH CHIPPERS
ANSI Z133.1-2006
American National Standard for Arboricultural Operations
Safety Requirements

5.3 Brush Chippers

- 5.3.1 The items contained in section 5.1 shall always be included in the review of this section.
- 5.3.2 Access panels (for example, guards) for maintenance and adjustment, including discharge chute and cutter housing, shall be closed and secured prior to starting the engine of brush chippers. These access panels shall not be opened or unsecured until the engine and all moving parts have come to a complete stop (see Annex C, General Safety Procedures That Apply to All Tree Work).
- 5.3.3 Rotary drum or disc brush chippers not equipped with a mechanical infeed system shall be equipped with an infeed hopper not less than 85 inches (2.15 m) measured from the blades or knives to ground level over the center line of the hopper. Side members of the infeed hopper shall have sufficient height so as to prevent workers from contacting the blades or knives during operations.
- 5.3.4 Rotary drum or disc brush chippers not equipped with a mechanical infeed system shall have a flexible anti-kickback device installed in the infeed hopper to reduce the risk of injury from flying chips and debris.
- 5.3.5 Chippers equipped with a mechanical infeed system shall have a quick-stop and reversing device on the infeed system. The activating mechanism for the quick-stop and reversing device shall be located across the top, along each side, and close to the feed end of the infeed hopper within easy reach of the worker.
- 5.3.6 Vision, hearing, and/or other appropriate personal protective equipment shall be worn when in the immediate area of a brush chipper in accordance with section 3.4, Personal Protective Equipment.
- 5.3.7 Arborists, mechanics, and other workers shall not, under any circumstances, reach into the infeed hopper when the cutter disc, rotary drum, or feed rollers are moving.
- 5.3.8 When trailer chippers are detached from the vehicles, they shall be chocked or otherwise secured in place.
- 5.3.9 When in a towing position, chipper safety chains shall be crossed under the tongue of the chipper and properly affixed to the towing vehicle.
- 5.3.10 See section 8.6, Brush Removal and Chipping, for additional requirements.

BRUSH REMOVAL AND CHIPPING
ANSI Z133.1-2006
American National Standard for Arboricultural Operations
Safety Requirements

8.6 Brush Removal and Chipping

- 8.6.1 Traffic control around the jobsite shall be established prior to the start of chipping operations along roads and highways (see section 3.2, Traffic Control Around the Jobsite).
- 8.6.2 Brush and logs shall not be allowed to create hazards in the work areas.
- 8.6.3 To prevent an entanglement hazard, loose clothing, climbing equipment, body belts, harnesses, lanyards, or gauntlet-type gloves (for example, long-cuffed lineman's or welder's gloves) shall not be worn while operating chippers.
- 8.6.4 Personal protective equipment shall be worn when in the immediate area of chipping operations in accordance with section 3.4, Personal Protective Equipment, of this standard.
- 8.6.5 Training shall be provided in the proper operation, feeding, starting, and shutdown procedures for the chipper being used.
- 8.6.6 Maintenance shall be performed only by those persons authorized by the employer and trained to perform such operations.
- 8.6.7 Brush and logs shall be fed into chippers, butt or cut end first, from the side of the feed table center line, and the operator shall immediately turn away from the feed table when the brush is taken into the rotor or feed rollers. Chippers should be fed from the curb-side whenever practical.
- 8.6.8 The brush chipper discharge chute or cutter housing cover shall not be raised or removed while any part of the chipper is turning or moving. Chippers shall not be used unless a discharge chute of sufficient length or design is provided that prevents personal contact with the blades (see Annex C, General Safety Procedures That Apply to All Tree Work).
- 8.6.9 Foreign material, such as stones, nails, sweepings, and rakings, shall not be fed into chippers.
- 8.6.10 Small branches shall be fed into chippers with longer branches or by being pushed with a long stick.
- 8.6.11 Hands or other parts of the body shall not be placed into the infeed hopper. Leaning into or pushing material into infeed hoppers with feet is prohibited.
- 8.6.12 While material is being fed into the chipper infeed hopper chute, pinch points continually develop within the material being chipped and between the material and machine. The operator shall be aware of this situation and respond accordingly.
- 8.6.13 When feeding a chipper during roadside operations, the operator shall do so in a manner that prevents him or her from stepping into traffic or being pushed into traffic by the material that is being fed into the chipper.
- 8.6.14 When using a winch in chipper operations, the operator shall ensure that the winch cable is properly stored before initiating chipper operations.
- 8.6.15 Refer to section 5.3, Brush Chippers, for additional information.

OPERATING INSTRUCTIONS

1. Be sure all guards are in place.
2. Check all chambers to be sure they are free and clear of debris.
3. Set direction of discharge chute.
4. Set feed handle in reverse position.
5. Check engine oil and fuel levels, as per engine manufacturer specifications.
6. Set engine throttle just above idle, and set choke.
7. Start engine and let idle for a few minutes to warm up. Open chipper feed tray, at this time.

HINTS

1. When operating machine, stand off to the side of the feed hopper when feeding wood into the machine. **NEVER STAND DIRECTLY IN FRONT OF THE HOPPER WHEN FEEDING WOOD INTO THE MACHINE.**
2. When using the chipper and you have a short piece of wood bouncing around and not being grabbed by the feed roll, **LEAVE IT! DO NOT TRY TO PUSH IT THROUGH WITH ARMS OR LEGS!** The next limb will push it through.
3. When through with the job let the engine run at full RPM, making sure all material is run through the machine before shutting it down. This will prevent any injuries from flying debris when the machine is started up at the next job.

WHILE PERFORMING MAINTENANCE OR REPAIR, ALWAYS REMOVE KEY FROM ENGINE AND REMOVE SPARK PLUG WIRE

SERVICE SCHEDULE

1. **ENGINE** – Follow service maintenance schedule set forth by the manufacturer in the engine manual.
2. **GREASE** - all main bearings once a day. **DO NOT OVER GREASE**. Wipe extra grease off bearings.
3. After using the machine, be sure to clean entire machine, especially around the engine.

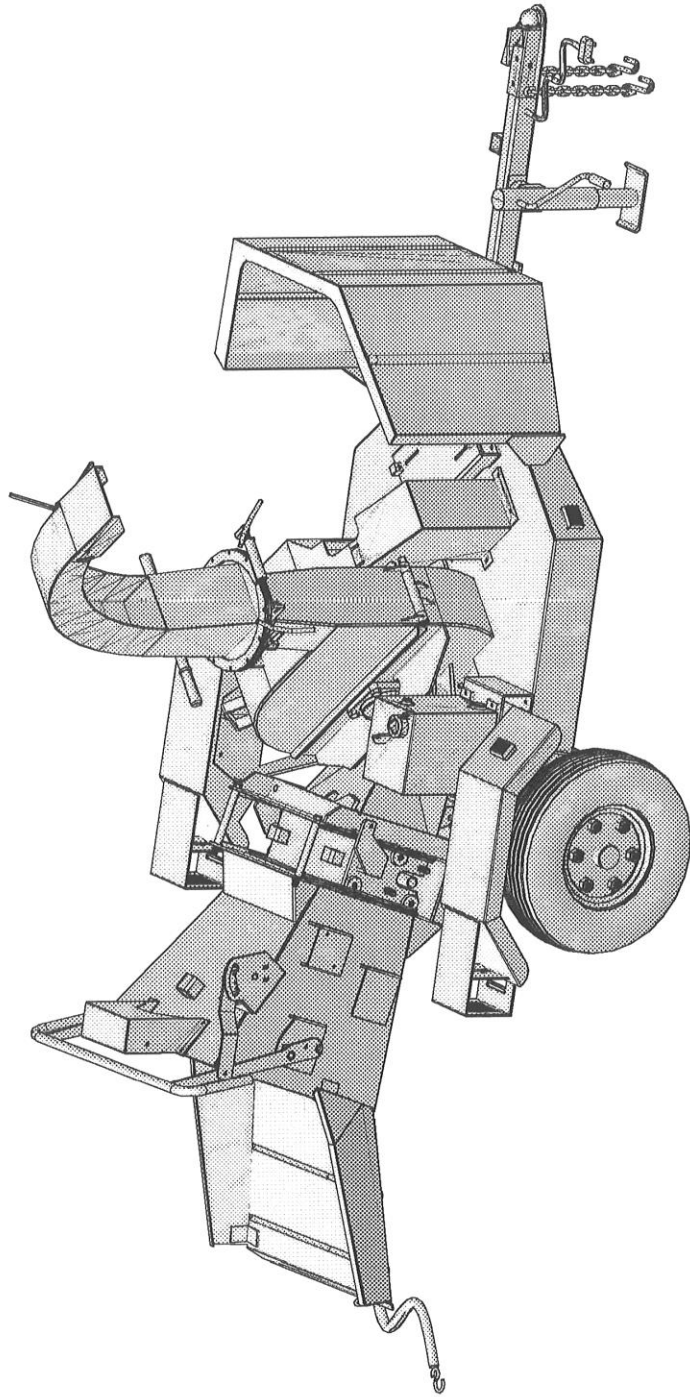
NOTE: SHOULD IT BECOME NECESSARY TO REMOVE THE EXHAUST CHUTE, OR WHENEVER SERVICING OR PERFORMING MAINTENANCE, REMOVE SPARKPLUG WIRES AND KEY FROM ENGINE. NEVER TURN ENGINE OVER WHILE THE EXHAUSTCHUTE IS REMOVED or THE IMPELLER HOUSING IS OPEN. BE SURE THE IMPELLER IS AT A COMPLETE STOP BEFORE OPENING THE IMPELLER HOUSING OR REMOVING THE EXHAUST CHUTE.

4. **SHARPEN/CHANGE CHIPPER BLADES** – Remove bolt from the impeller housing and open housing. **DO NOT** reach in and hold the impeller with your hand instead use a piece of 2” x 4” wood to push the impeller to desired position. When reinstalling the blades, be sure to use Loctite. We use **Loctite Blue 242**, removable at the factory. **BE SURE** to clean mounting surface before installing the blades, and **BE SURE** to follow the torque specifications in this manual. It is also **RECOMMENDED** that you replace the hardware whenever replacing or reversing the blades.
5. **BED KNIFE ADJUSTMENT** on hydraulic feed machines is .070. Check this clearance on all blades. **HINT:** Blades need sharpening after approximately 8-15 hours of use.

SERVICE SCHEDULE	AS NEEDED	DAILY	WEEKLY	MONTHLY
Clean Machine	X	X		
Grease Infeed Roll Bearing	X	X		
Grease Disc Shaft Bearing	X	X		
Sharpen Chipper Blades	X OR		X	
Check & Adjust Bed Knife	X OR		X	
Check all Nuts & Bolts	X	X		
Check Hydraulic Oil	X			X
Check Hydraulic Hoses	X			X

NEVER, UNDER ANY CIRCUMSTANCES START THE ENGINE WHEN THE UNIT IS OPEN OR GUARDS HAVE BEEN REMOVED, OR AT ANY TIME DURING SERVICE OR ROUTINE MAINTENANCE.

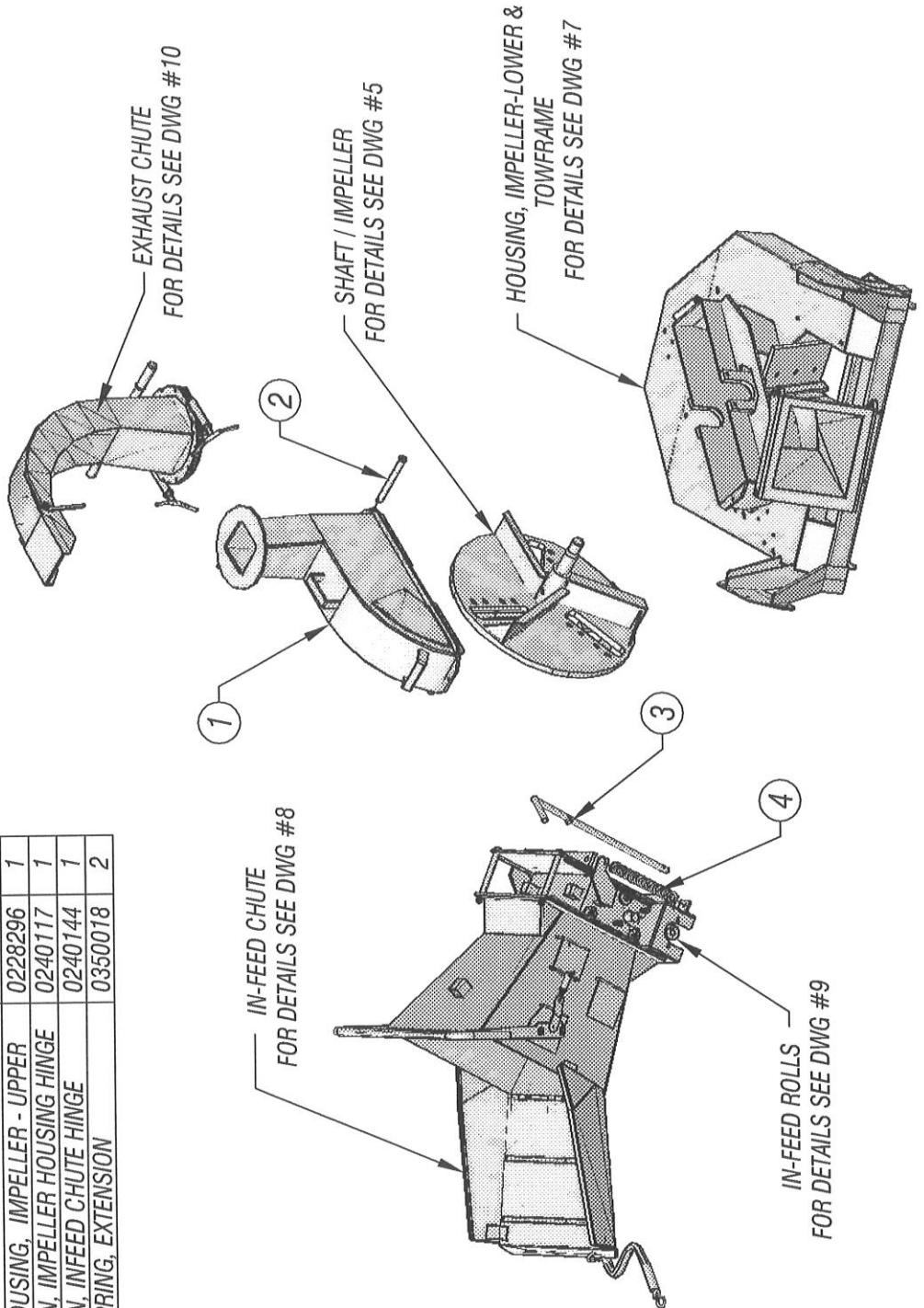
ISSUED:01-21-2013



6235BXT-6236KXT CHIPPER - DWG #1

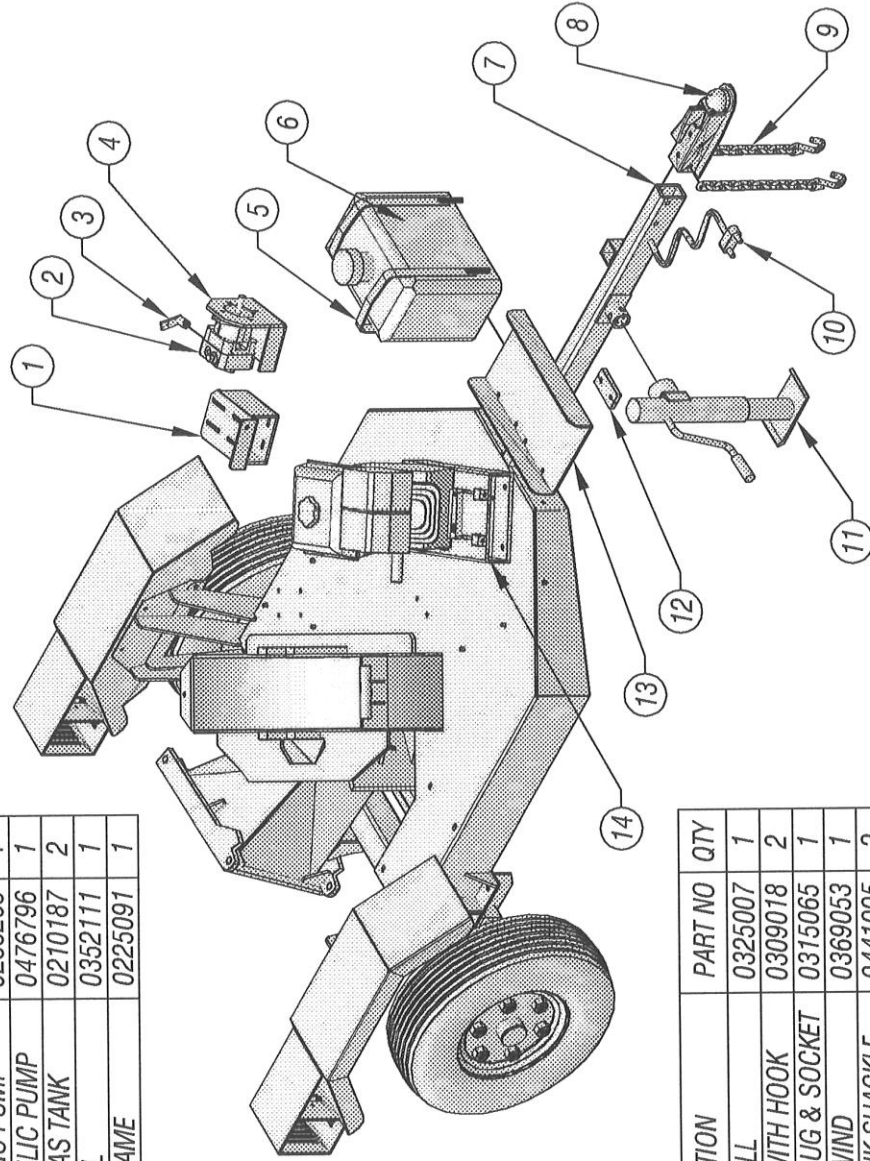
ISSUED: 01-21-2013

ITEM	DESCRIPTION	PART NO	QTY
1	HOUSING, IMPELLER - UPPER	0228296	1
2	PIN, IMPELLER HOUSING HINGE	0240117	1
3	PIN, INFEED CHUTE HINGE	0240144	1
4	SPRING, EXTENSION	0350018	2



6235BXT-6236KXT CHIPPER - DWG #2

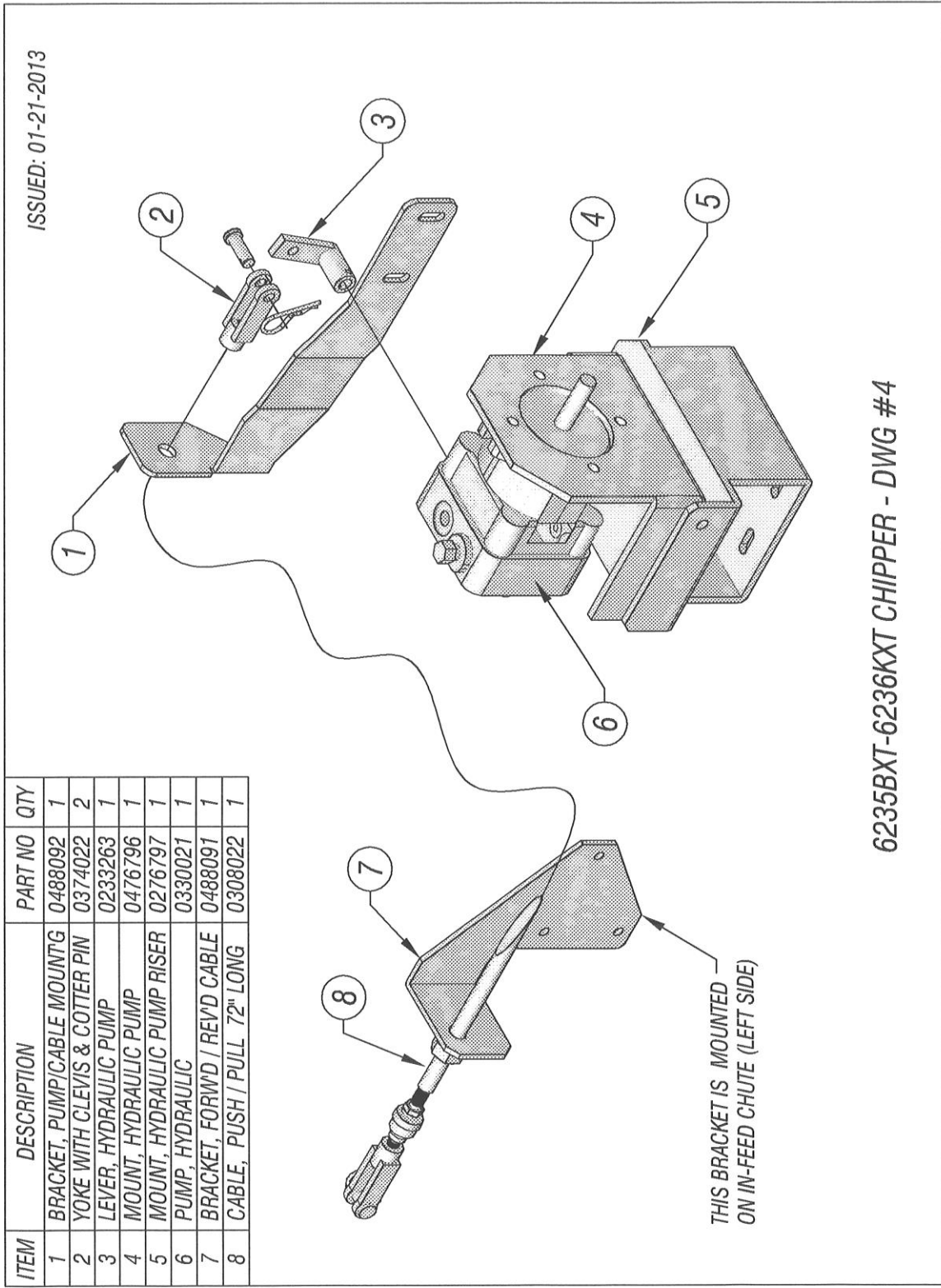
ISSUED: 01-21-2013



ITEM	DESCRIPTION	PART NO	QTY
1	MOUNT, HYD PUMP RISER	0276797	1
2	PUMP, HYDRAULIC	0330021	1
3	LEVER, HYDRAULIC PUMP	0233263	1
4	MOUNT, HYDRAULIC PUMP	0476796	1
5	CLAMP, 6 GAL GAS TANK	0210187	2
6	TANK, GAS 6 GAL	0352111	1
7	TONGUE, TOWFRAME	0225091	1

ITEM	DESCRIPTION	PART NO	QTY
8	COUPLER, 2" BALL	0325007	1
9	SAFETY CHAIN WITH HOOK	0309018	2
10	CONNECTOR, PLUG & SOCKET	0315065	1
11	JACK 10" SIDE WIND	0369053	1
12	PLATE, FUEL TANK SHACKLE	0441995	2
13	PLATE, TANK MOUNTING	0490047	1
14	FRAME, ENGINE MOUNTING	0219510	1

6235BXT-6236KXT CHIPPER - DWG #3



ITEM	DESCRIPTION	PART NO	QTY
1	BRACKET, PUMP/CABLE MOUNTG	0488092	1
2	YOKE WITH CLEVIS & COTTER PIN	0374022	2
3	LEVER, HYDRAULIC PUMP	0233263	1
4	MOUNT, HYDRAULIC PUMP	0476796	1
5	MOUNT, HYDRAULIC PUMP RISER	0276797	1
6	PUMP, HYDRAULIC	0330021	1
7	BRACKET, FORWD / REV'D CABLE	0488091	1
8	CABLE, PUSH / PULL, 72" LONG	0308022	1

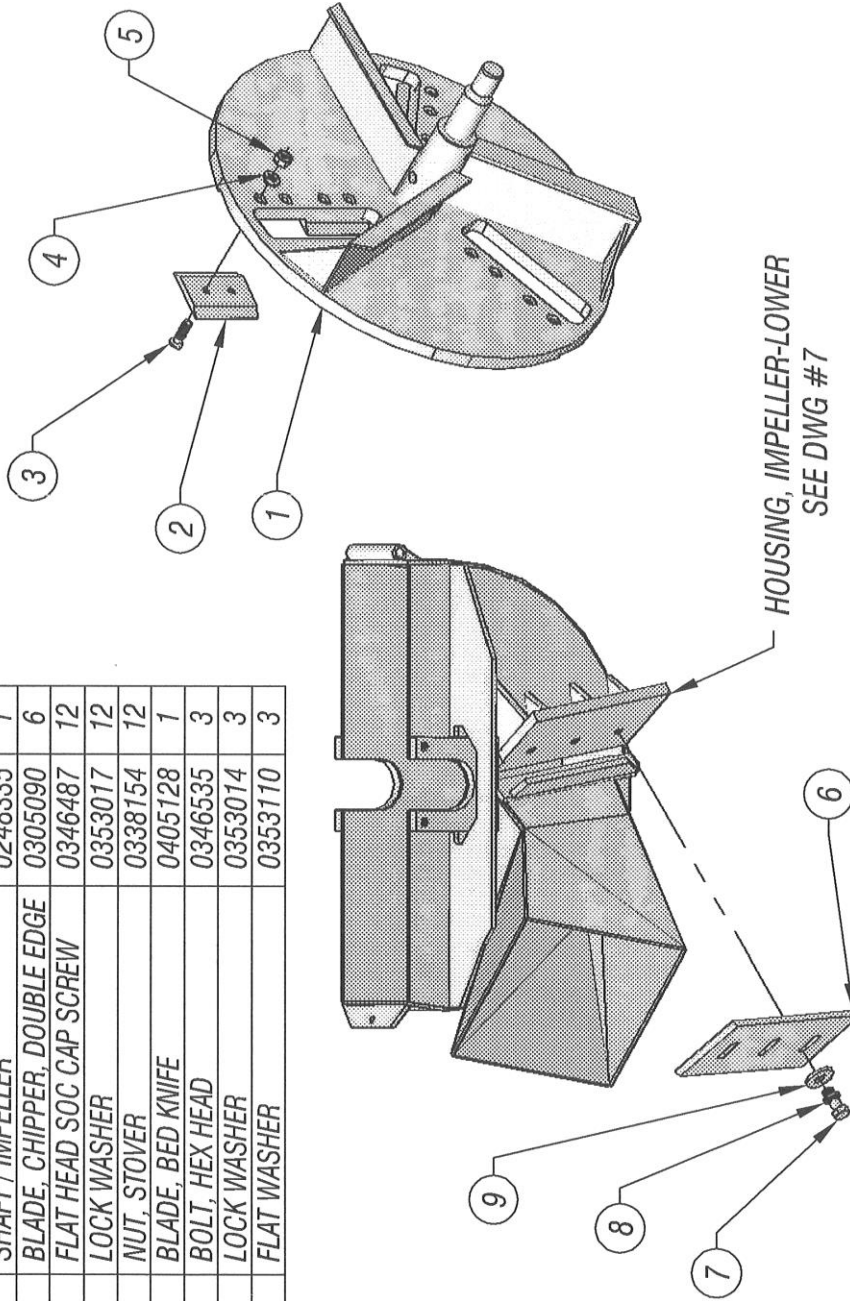
ISSUED: 01-21-2013

6235BXT-6236KXT CHIPPER - DWG #4

THIS BRACKET IS MOUNTED ON IN-FEED CHUTE (LEFT SIDE)

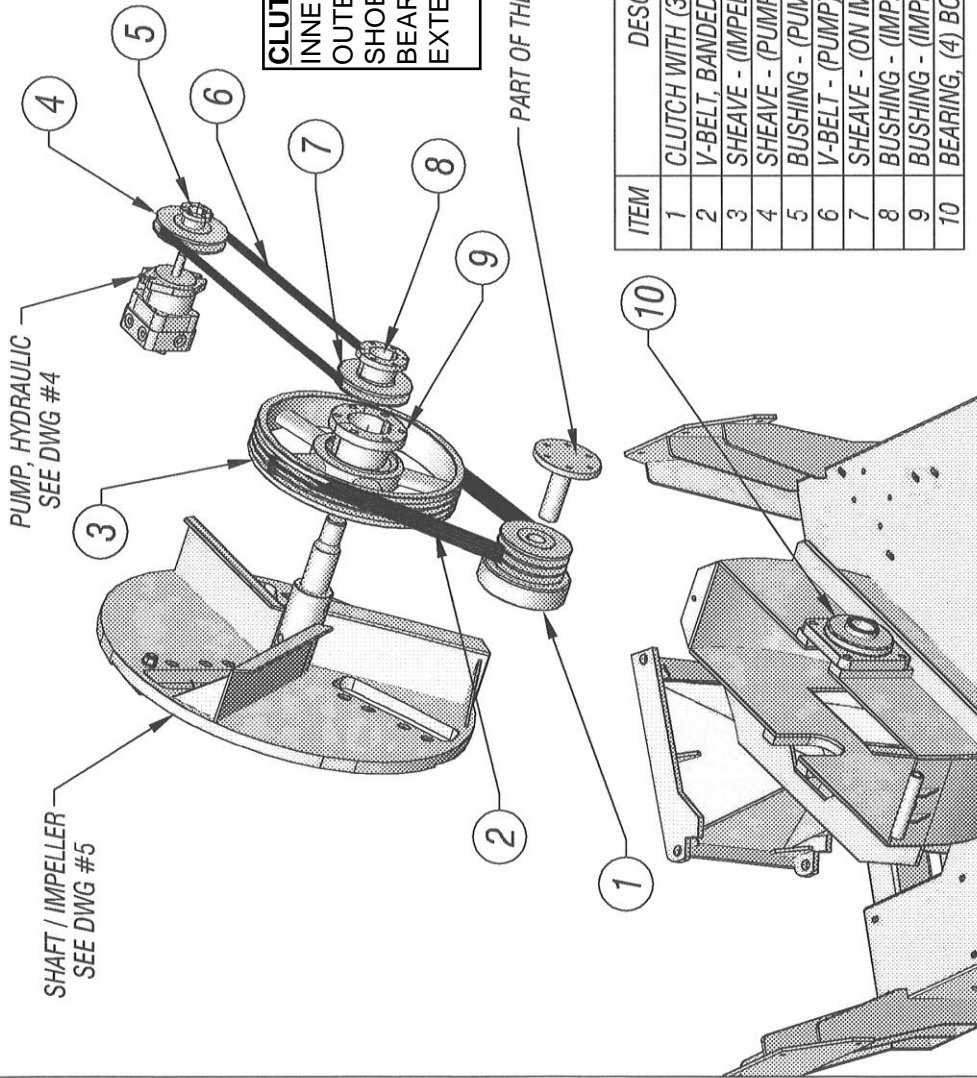
ISSUED: 01-21-2013

ITEM	DESCRIPTION	PART NO	QTY
1	SHAFT / IMPELLER	0248335	1
2	BLADE, CHIPPER, DOUBLE EDGE	0305090	6
3	FLAT HEAD SOC CAP SCREW	0346487	12
4	LOCK WASHER	0353017	12
5	NUT, STOVER	0338154	12
6	BLADE, BED KNIFE	0405128	1
7	BOLT, HEX HEAD	0346535	3
8	LOCK WASHER	0353014	3
9	FLAT WASHER	0353110	3



6235BXT-6236KXT CHIPPER - DWG #5

ISSUED: 01-21-2013



CLUTCH REPLACEMENT PARTS

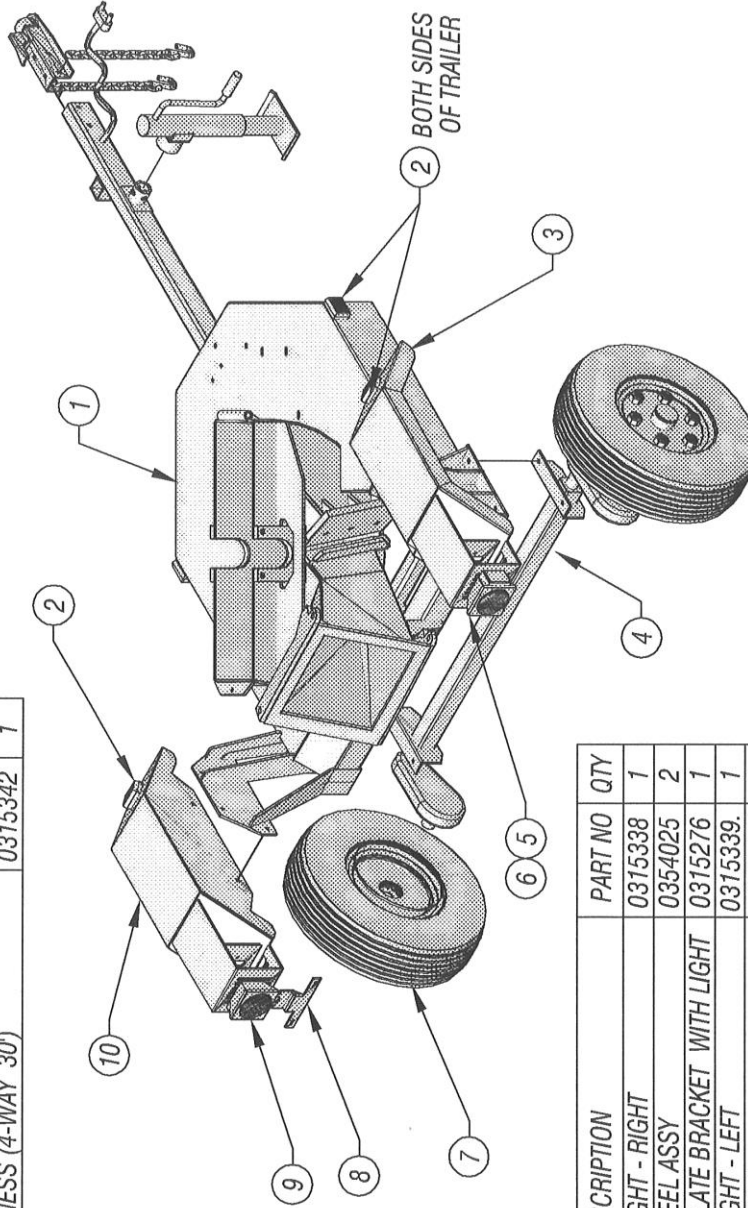
INNER SPRING - QTY.2 - 0337383-N
 OUTER SPRING - QTY.2 - 0337384-N
 SHOE - QTY.4 - 0337385
 BEARING-2 SEALS - QTY.2 - 0337431-N
 EXTERNAL RING/HUB SNAP RING - QTY.1 - 0337432

ITEM	DESCRIPTION	PART NO	QTY
1	CLUTCH WITH (3) GROOVE PULLEY	0337277	1
2	V-BELT, BANDED - (ENGINE)	0304183	1
3	SHEAVE - (IMPELLER)	0342166	1
4	SHEAVE - (PUMP)	0342086	1
5	BUSHING - (PUMP)	0342067	1
6	V-BELT - (PUMP)	0304126	1
7	SHEAVE - (ON IMPELLER TO PUMP)	0342085	1
8	BUSHING - (IMP. SHEAVE TO PUMP)	0342250	1
9	BUSHING - (IMPELLER SHEAVE)	0342069	1
10	BEARING, (4) BOLT FLANGE (IMPELLER)	0303059	2

6235BXT-6236KXT CHIPPER - DWG #6

~~ISSUED: 01-21-2013~~
 ISSUED: 11-12-2013

ITEM	DESCRIPTION	PART NO	QTY
1	HOUSING, IMPELLER-LOWER & TOWFRAME	0228295	1
2	AMBER LIGHTS	0315245	4
3	FENDER - RIGHT	0216057	1
4	AXLE, #9 TORFLAX	0302112	1
5	WIRE HARNESS (4-WAY 30')	0315342	1

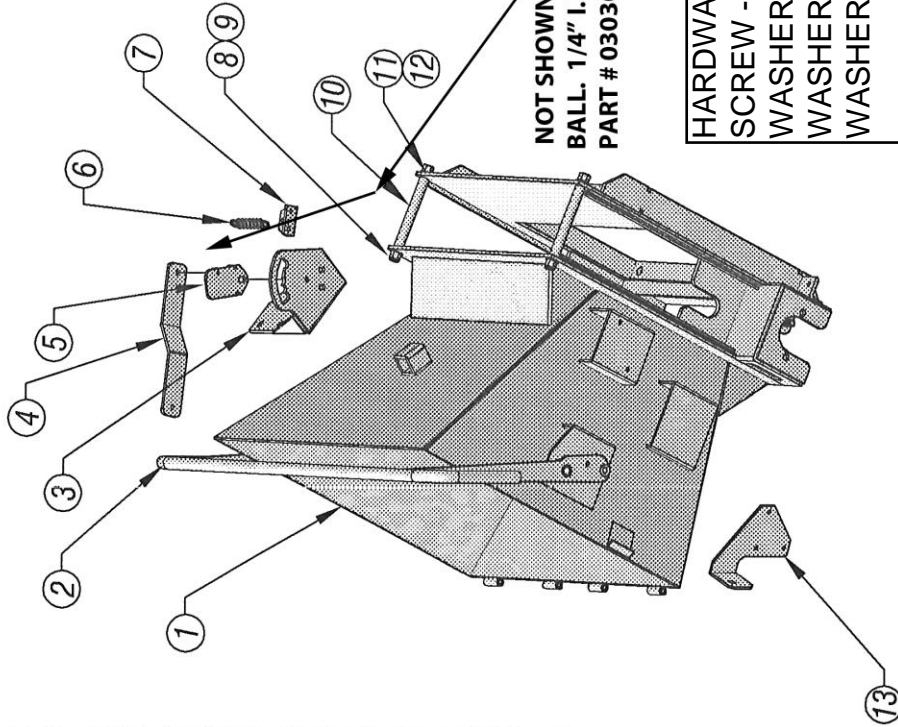


ITEM	DESCRIPTION	PART NO	QTY
6	TRAILER LIGHT - RIGHT	0315338	1
7	TIRE & WHEEL ASSY	0354025	2
8	LICENSE PLATE BRACKET WITH LIGHT	0315276	1
9	TRAILER LIGHT - LEFT	0315339	1
10	FENDER - LEFT	0216056	1

6235BXT-6236KXT CHIPPER - DWG #7

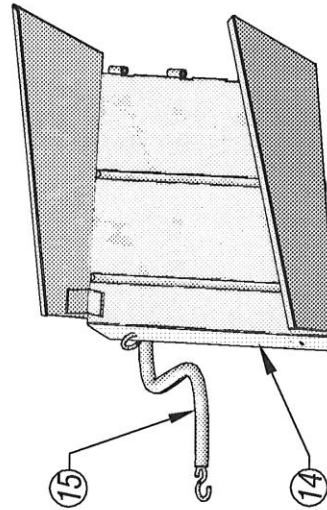
ISSUED: 01-21-2013

ITEM	DESCRIPTION	PART NO	QTY
1	CHUTE, POWER IN-FEED	0226163	1
2	HANDLE, FWD / REV POWER IN-FEED	0223133	1
3	MOUNT, FORWARD / REVERSE DETENT	0276799	1
4	LEVER, FORWARD / REVERSE DETENT	0433264	1
5	PLATE, DETENT SPRING MOUNTING	0290119	1
6	SPRING, EXTENSION	0350055	1
7	MOUNT, DETENT SPRING - LOWER	0476800	1
8	STUD, IN-FEED CHUTE SUPPORT	0279006	2
9	FLAT WASHER, - 1/2 I.D.	0353115	2
10	TUBE, DOM-3/4 OD x 1/8 WALL x 6 3/4 LG	STOCK	2
11	LOCK WASHER, SPLT - 1/2 I.D.	0353005	2
12	HEX NUT, - 1/2-13	0338005	2
13	BRACKET, FORWARD / REVERSE CABLE	0488091	1
14	DOOR, FOLDING IN-FEED CHUTE	0260071	1
15	BUNGIE CORD - 10"	0308013	1



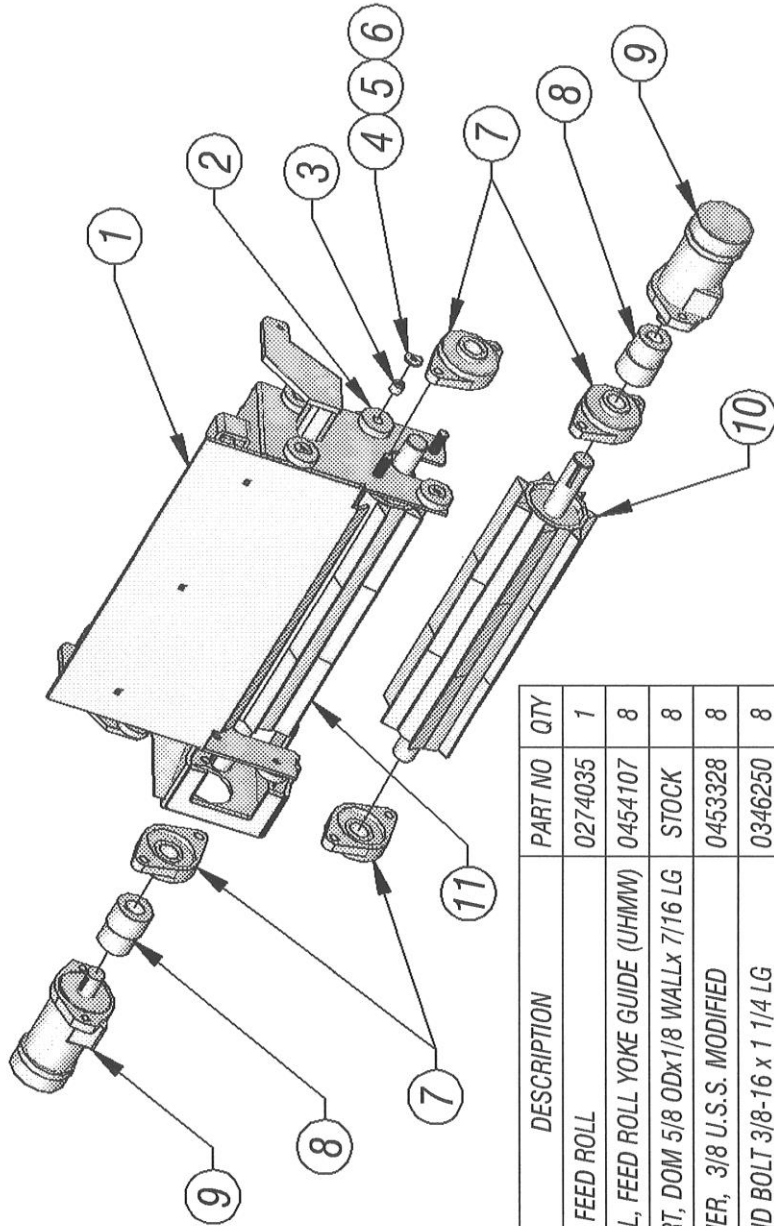
NOT SHOWN: BEARING,
BALL. 1/4" I.D. X 3/4" O.D.
PART # 0303034-N

HARDWARE - NOT SHOWN
SCREW - QTY.1 - 0346071-N
WASHER - QTY. 1 - 0353011-N
WASHER - QTY.1 - 0353201-N
WASHER - QTY. 2 - 0353121-N



6235BXT-6236KXT CHIPPER - DWG #8

ISSUED: 01-21-2013

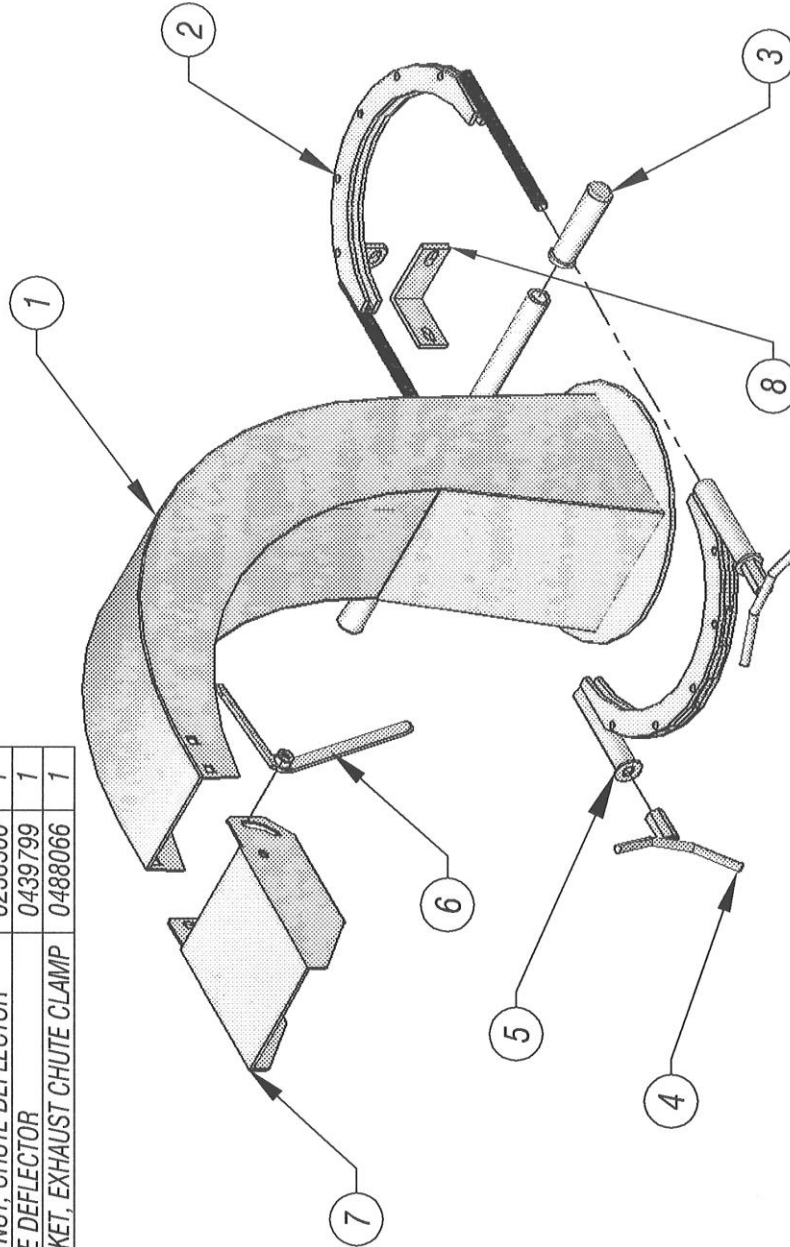


ITEM	DESCRIPTION	PART NO	QTY
1	YOKE, FEED ROLL	0274035	1
2	WHEEL, FEED ROLL YOKE GUIDE (UHMW)	0454107	8
3	INSERT, DOM 5/8 ODX1/8 WALLx 7/16 LG	STOCK	8
4	WASHER, 3/8 U.S.S. MODIFIED	0453328	8
5	HEX HD BOLT 3/8-16 x 1 1/4 LG	0346250	8
6	LOCK NUT, 3/8-16	0338102	8
7	BEARING, 2-BOLT FLANGED, 1 1/4 BORE	0303031	4
8	COUPLING, POWER FEED ROLLER	0213062	2
9	DRIVE MOTOR, HYDRAULIC	0330143	2
10	WHEEL, FEED ROLL - LOWER	0254106	1
11	WHEEL, FEED ROLL - UPPER	0254105	1

6235BXT-6236KXT CHIPPER - DWG #9

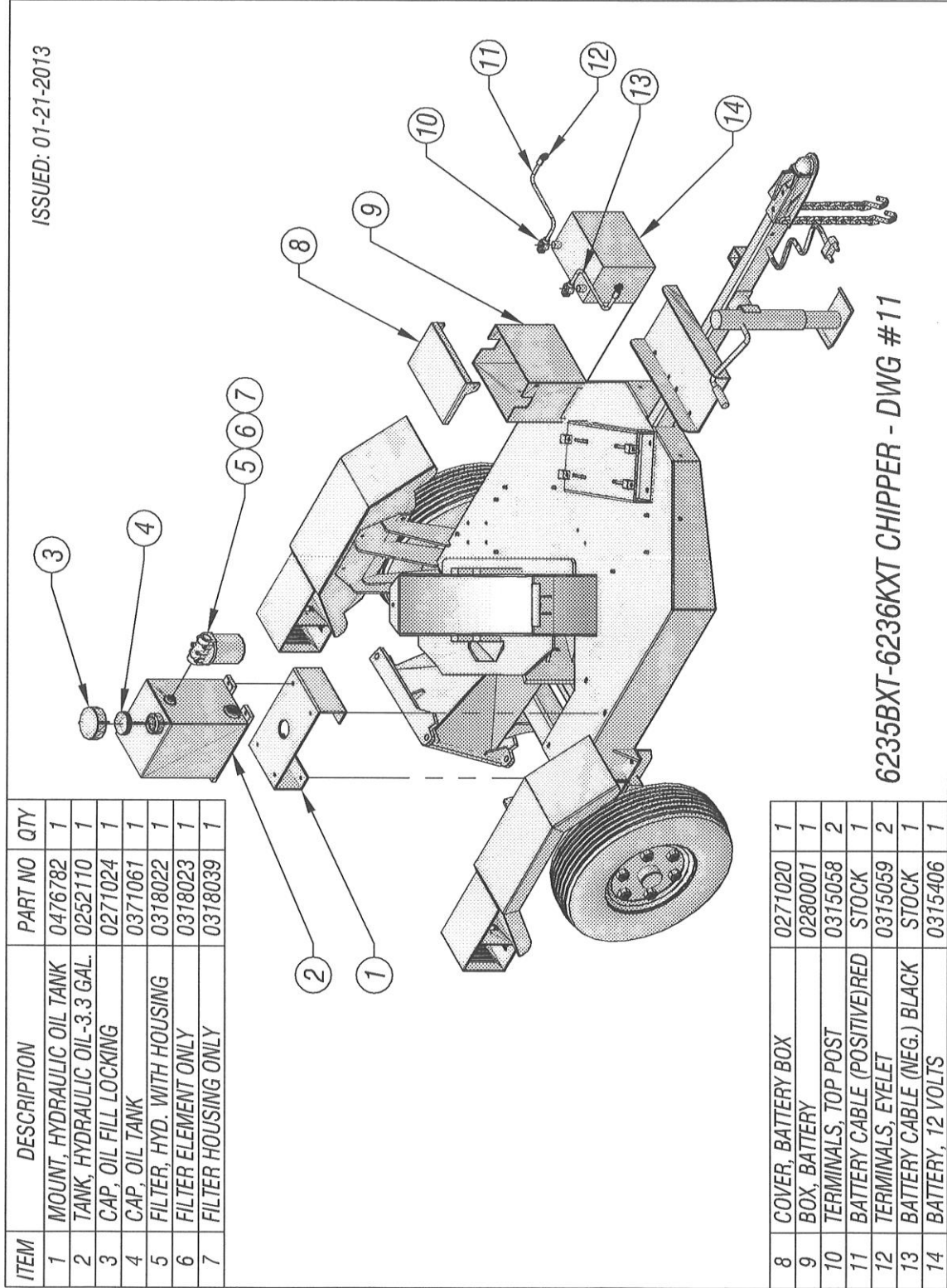
ISSUED: 01-21-2013
 ISSUED: 11-12-2013

ITEM	DESCRIPTION	PART NO	QTY
1	CHUTE, EXHAUST	0226147	1
2	CLAMP, EXHAUST CHUTE - FRONT	0210147	1
3	RUBBER GRIP	0332009	2
4	WING NUT, EXHAUST CLAMP	0238504	2
5	CLAMP, EXHAUST CHUTE - REAR	0210148	1
6	WING NUT, CHUTE DEFLECTOR	0238500	1
7	CHUTE DEFLECTOR	0439799	1
8	BRACKET, EXHAUST CHUTE CLAMP	0488066	1



6235BXT-6236KXT CHIPPER - DWG #10

ISSUED: 01-21-2013

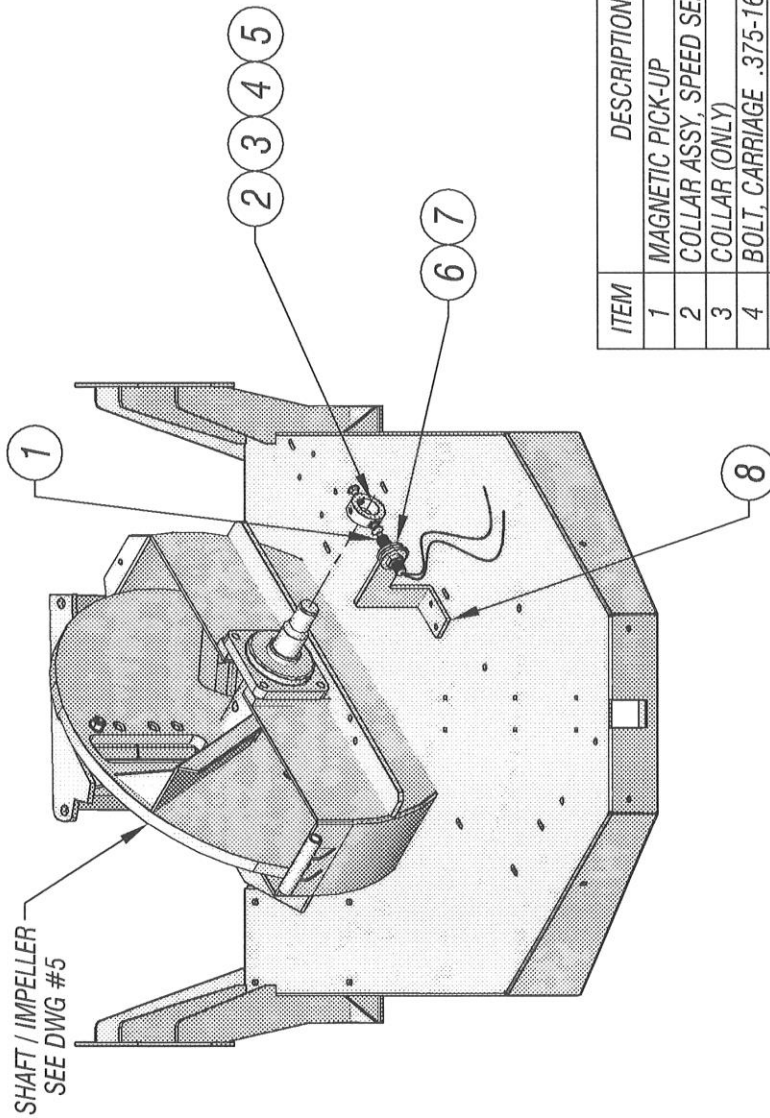


6235BXT-6236KXT CHIPPER - DWG #11

ITEM	DESCRIPTION	PART NO	QTY
1	MOUNT, HYDRAULIC OIL TANK	0476782	1
2	TANK, HYDRAULIC OIL-3.3 GAL.	0252110	1
3	CAP, OIL FILL LOCKING	0271024	1
4	CAP, OIL TANK	0371061	1
5	FILTER, HYD. WITH HOUSING	0318022	1
6	FILTER ELEMENT ONLY	0318023	1
7	FILTER HOUSING ONLY	0318039	1

8	COVER, BATTERY BOX	0271020	1
9	BOX, BATTERY	0280001	1
10	TERMINALS, TOP POST	0315058	2
11	BATTERY CABLE (POSITIVE) RED	STOCK	1
12	TERMINALS, EYELET	0315059	2
13	BATTERY CABLE (NEG.) BLACK	STOCK	1
14	BATTERY, 12 VOLTS	0315406	1

ISSUED: 01-21-2013

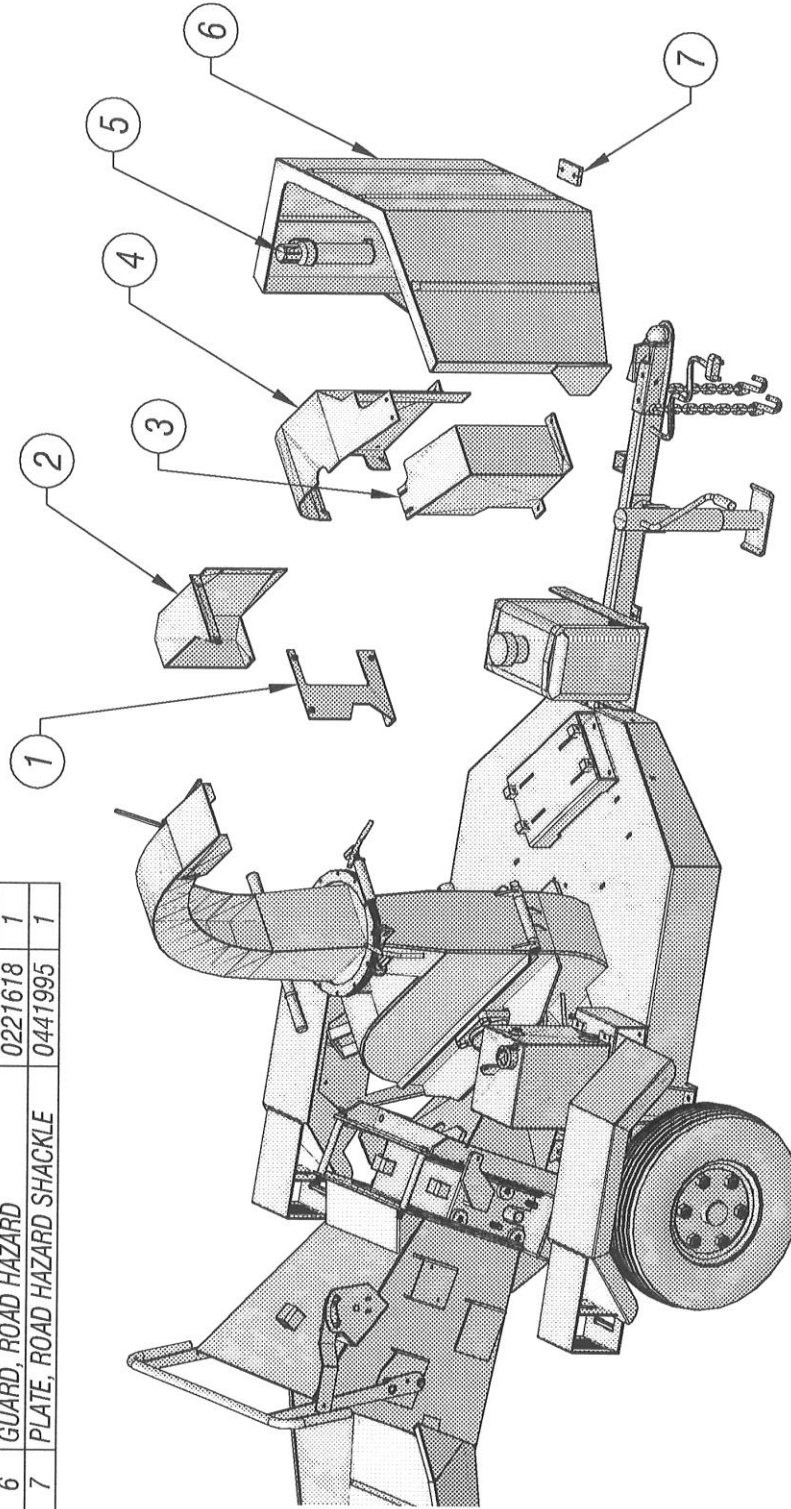


ITEM	DESCRIPTION	PART NO	QTY
1	MAGNETIC PICK-UP	0315128	1
2	COLLAR ASSY, SPEED SENSING	0111039	1
3	COLLAR (ONLY)	0411041	1
4	BOLT, CARRIAGE .375-16 UNC x 1" LONG	0346228	2
5	NUT, HEX JAM, .375-16 UNC	0338052	2
6	WASHER, FLAT	0353105	2
7	HEX NUT, .625-18	0338045	2
8	BRACKET, MAG. PICK-UP MOUNTING	0406878	1

MAG. PICK-UP FOR SPEED SENSING OPTION #0161284
6235BXT-6236KXT CHIPPER - DWG #12

ISSUED:01-21-2013

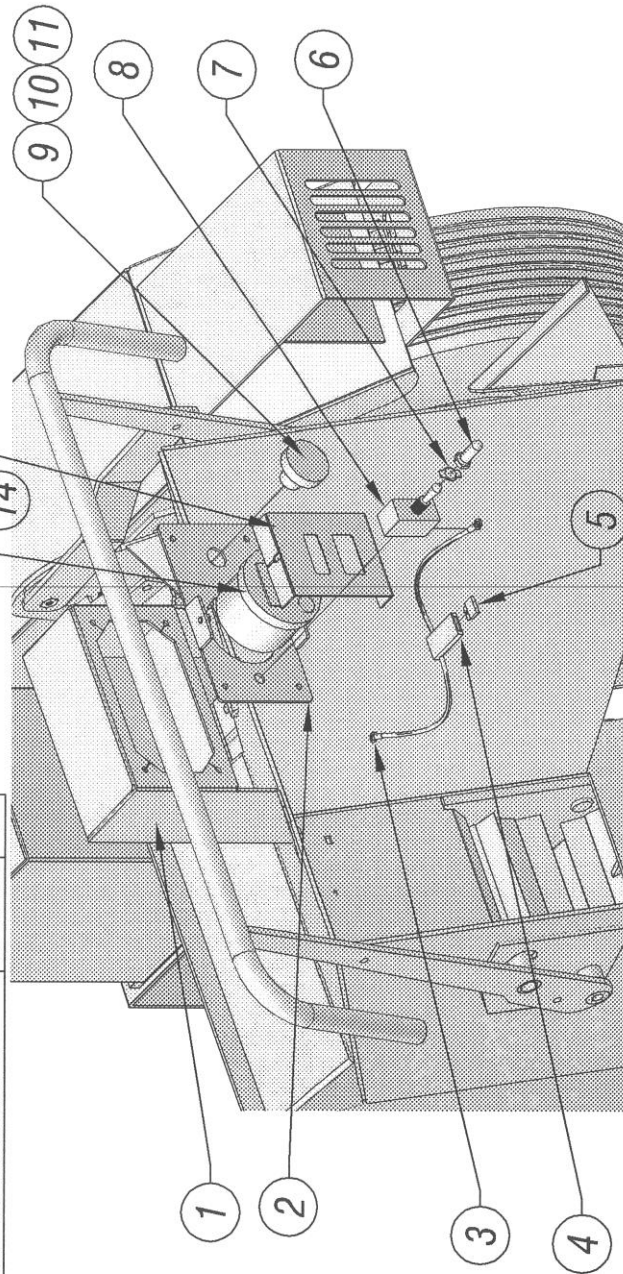
ITEM	DESCRIPTION	PART NO	QTY
1	PANEL, IMPELLER SHEAVE GUARD	0286753	1
2	GUARD, HYDRAULIC PUMP	0221611	1
3	GUARD, ENGINE SHEAVE	0221613	1
4	GUARD, IMPELLER SHEAVE	0221609	1
5	MANUAL HOLDER	0381057	1
6	GUARD, ROAD HAZARD	0221618	1
7	PLATE, ROAD HAZARD SHACKLE	0441995	1



6235BXT-6236KXT CHIPPER - DWG #13

ITEM	DESCRIPTION	PART NO	QTY	ITEM	DESCRIPTION	PART NO	QTY
1	MOUNT, SPEED SENSING GAUGE BOX	0276458	1	10	LEGEND PLATE - EMERGENCY STOP	0315275	1
2	PLATE, SPEED SENSING BOX - FRONT	0262258	1	11	CONTACT BLOCK	0315274	1
3	CONNECTOR, SWITCH	0315119	2	12	GUARD, SPEED SENSING GAUGE	0421398	1
4	HOLDER, FUSE	0315167	1	13	AUTOFEED TACHOMETER WITH WIRING	0315250	1
5	FUSE, (IN LINE)	0315168	1	14	SOLENOID VALVE	0330106	1
6	BOOT, TOGGLE SWITCH	0315145	1				
7	ON / OFF PLATE	0315155	1				
8	TOGGLE SWITCH, SINGLE THROW	0315143	1				
9	KILL SWITCH - MUSHROOM HEAD	0315273	1				

ISSUED:01-21-2013

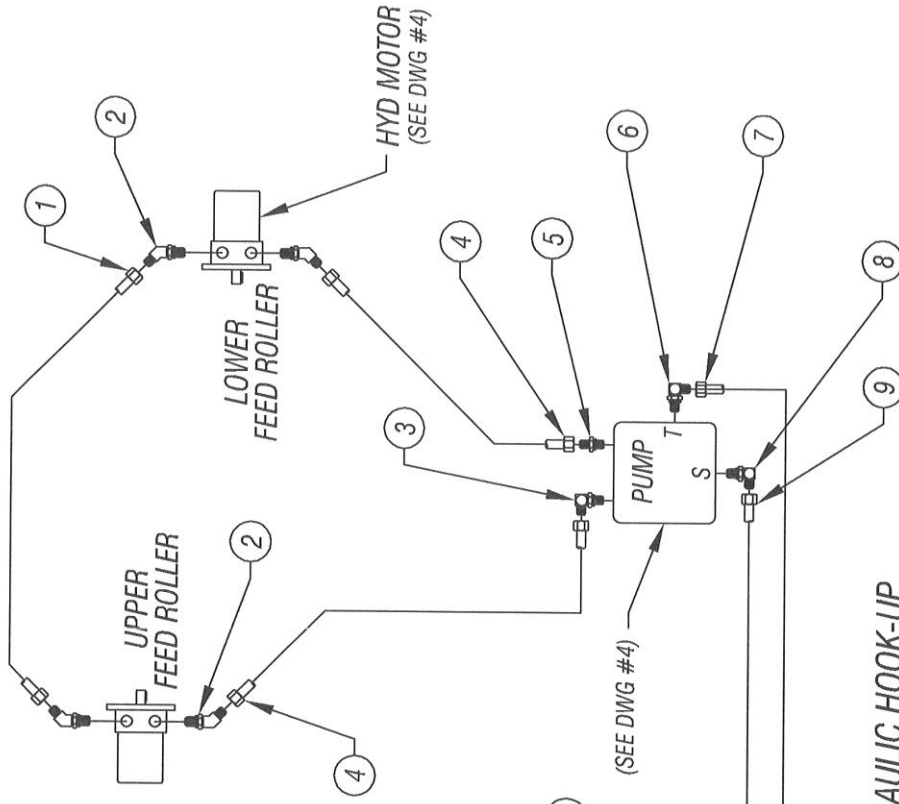


GAUGE FOR SPEED SENSING OPTION #0161284
6235BXT-6236KXT CHIPPER - DWG #14

SNAP ACTION SWITCH - 0315432-N

ISSUED: 01-21-2013

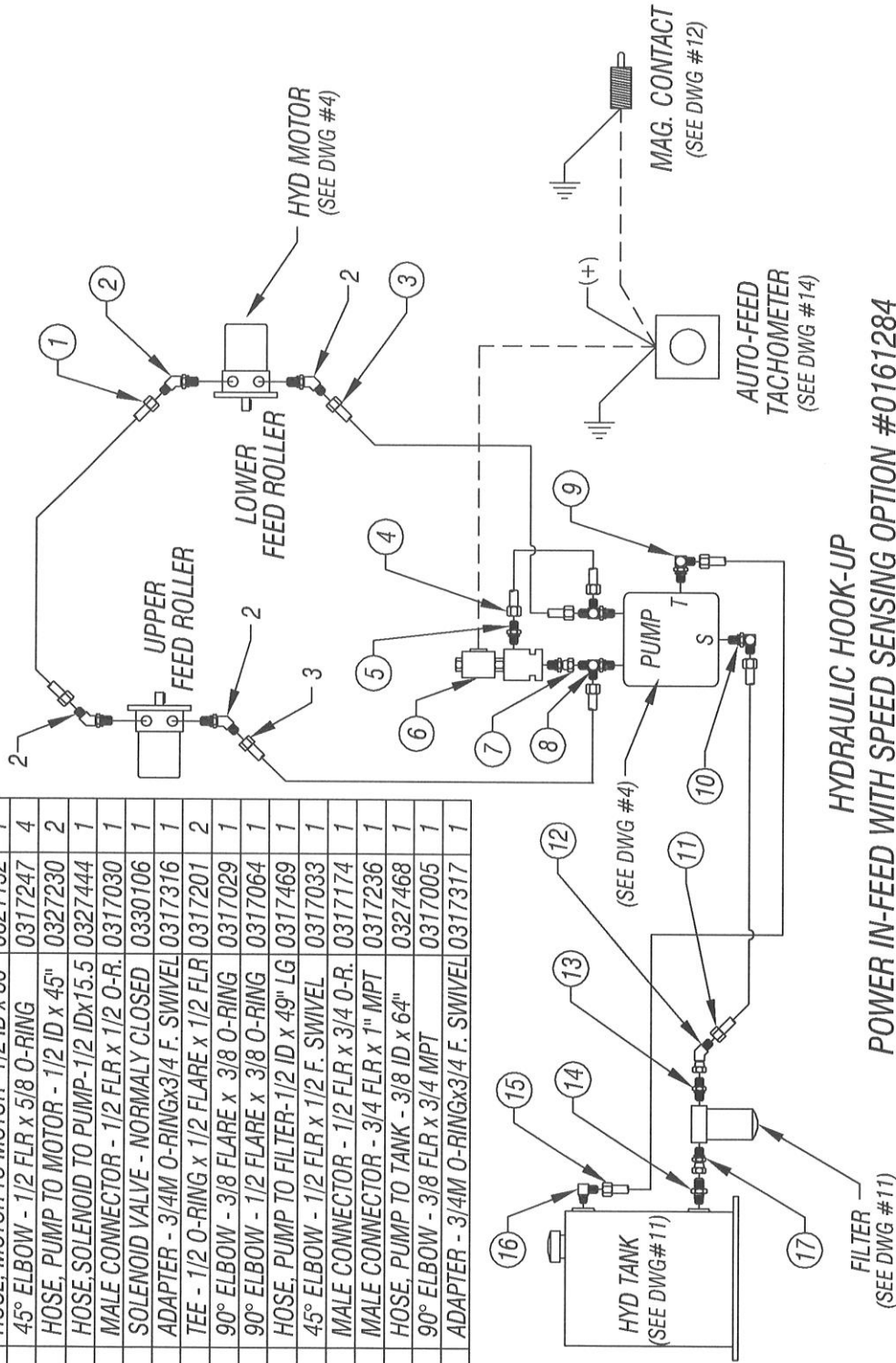
ITEM	DESCRIPTION	PART NO	QTY
1	HOSE, MOTOR TO MOTOR - 1/2 ID x 50"	0321152	1
2	45° ELBOW - 1/2 FLR x 5/8 O-RING	0317247	4
3	90° ELBOW - 1/2 FLR x 1/2 O-RING	0317007	1
4	HOSE, PUMP TO MOTOR - 1/2 ID x 45"	0327230	2
5	MALE CONNECTOR - 1/2 FLR x 1/2 O-R.	0317030	1
6	90° ELBOW - 3/8 FLR x 3/8 O-RING	0317029	1
7	HOSE, PUMP TO TANK - 3/8 ID x 64"	0327468	1
8	90° ELBOW - 1/2 FLR x 3/8 O-RING	0317064	1
9	HOSE, PUMP TO FILTER - 1/2 ID x 49" LG	0317469	1
10	MALE CONNECTOR - 1/2 FLR x 3/4 O-R.	0317174	1
11	45° ELBOW - 1/2 FLR x 1/2 F. SWIVEL	0317033	1
12	ADAPTER - 3/4 O-RING x 3/4 F. SWIVEL	0317317	1
13	MALE CONNECTOR - 3/4 FLR x 1" MPT	0317236	1
14	90° ELBOW - 3/8 FLARE x 3/4 MPT	0317005	1



HYDRAULIC HOOK-UP
 POWER IN-FEED (STANDARD MACH.)
 6235BXT-6236KXT CHIPPER - DWG #15

ISSUED: 01-21-2013

ITEM	DESCRIPTION	PART NO	QTY
1	HOSE, MOTOR TO MOTOR - 1/2 ID x 50"	0321152	1
2	45° ELBOW - 1/2 FLR x 5/8 O-RING	0317247	4
3	HOSE, PUMP TO MOTOR - 1/2 ID x 45"	0327230	2
4	HOSE, SOLENOID TO PUMP - 1/2 ID x 15.5"	0327444	1
5	MALE CONNECTOR - 1/2 FLR x 1/2 O-R.	0317030	1
6	SOLENOID VALVE - NORMALLY CLOSED	0330106	1
7	ADAPTER - 3/4M O-RINGx3/4 F. SWIVEL	0317316	1
8	TEE - 1/2 O-RING x 1/2 FLARE x 1/2 FLR	0317201	2
9	90° ELBOW - 3/8 FLARE x 3/8 O-RING	0317029	1
10	90° ELBOW - 1/2 FLARE x 3/8 O-RING	0317064	1
11	HOSE, PUMP TO FILTER - 1/2 ID x 49" LG	0317469	1
12	45° ELBOW - 1/2 FLR x 1/2 F. SWIVEL	0317033	1
13	MALE CONNECTOR - 1/2 FLR x 3/4 O-R.	0317174	1
14	MALE CONNECTOR - 3/4 FLR x 1" MPT	0317236	1
15	HOSE, PUMP TO TANK - 3/8 ID x 64"	0327468	1
16	90° ELBOW - 3/8 FLR x 3/4 MPT	0317005	1
17	ADAPTER - 3/4M O-RINGx3/4 F. SWIVEL	0317317	1



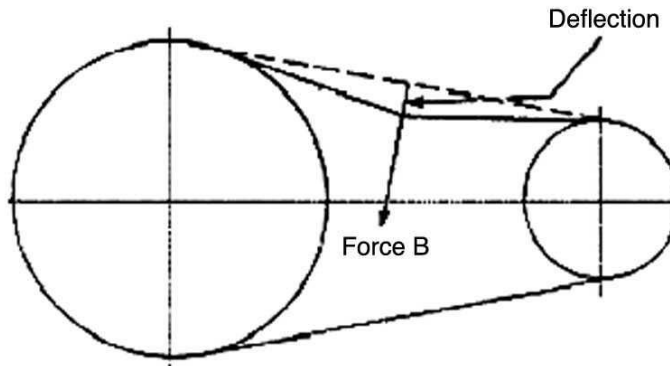
HYDRAULIC HOOK-UP
POWER IN-FEED WITH SPEED SENSING OPTION #0161284
6235BXT-6236KXT CHIPPER - DWG #16

Below is a quick reference chart for various "Flat Head Cap Screws" and the torque recommendations.

VALUES ARE STATED IN FOOT POUNDS

BOLT SIZE	Thds Per Inch	SAE Grade 5	SAE Grade 8
1/4	20	10	14
	28	---	---
5/16	18	19	29
	24	---	---
3/8	16	33	47
	24	---	---
7/16	14	54	78
	20	---	---
1/2	13	78	119
	20	---	---
9/16	12	114	169
	18	---	---
5/8	11	154	230
	11	---	---
3/4	10	257	380
	10	---	---
7/8	9	382	600
	9	---	---
1	8	587	700
	8	---	---

Drive Belt Tension Measurement by Deflection



Deflection should be 3/8" when 8-12 lbs. push is applied at "B"

WARRANTY POLICY - OTHER THAN GREENS ROLLERS

Please remember to complete and return your Warranty Card and Dealer Delivery Report. Warranty Claims will not be considered if your Warranty Card and Dealer Delivery Report has not been returned to Salsco.

Your Salsco Commercial or Turf Equipment product is a commercial type product and is normally manufactured and sold for commercial or industrial use. **Salsco will, for the original purchaser, for one (1) year from the date of purchase (90 days if used for rental purposes) repair or replace, free of charge, any SALSCO part or parts found to be defective in material, workmanship or both.** Any transportation or shipping charges will be borne by the purchaser. If, during the warranty period stated above, the product does not function properly due to defect, simply contact Salsco and follow the Warranty Procedures included in this manual.

This warranty **does not** include:

- Incidental or consequential damages and is exclusive of any implied warranties.
- Normal maintenance parts, including, but not limited to hoses, chains, belts, filters, lubricants, etc.
- Parts or components, which are covered under the original manufacturer warranty, including, but not limited to engines, pumps, and motors.

WARRANTY PROCEDURE

In order for Salsco to consider your warranty claims in a timely manner you must follow the simple procedures listed below:

MACHINE OR PART FAILURE

- Call our service department for helpful instruction on how to correct or repair the problem. Preventive maintenance will also be suggested.
- When ordering parts for Warranty issues, you **MUST** retain possession of the old parts in question until notified with respect to returning the parts to Salsco or other disposition.
- Warranty Claims **MUST** be filed within 30-days from completion of the work performed. Contact our office for an electronic warranty claim form.
- Fill in all information requested on warranty claim form, a copy of which is included in this manual, (date of purchase, company name, address, etc.). List all parts used. Make sure part numbers are correct. You can obtain these from your manual. (include good description of problem; i.e. "leaking from spool" rather than "leaking").
- It is our goal to consider and reach a disposition on each Warranty Claim within 30-days from the date that it is received. Therefore it is important that you respond promptly to any request for further information. Claims with no response to inquiries will be closed as "**denied for lack of response**" 90-days from the date of request.
- Email, Fax or Send Warranty Claim form to our Warranty Department. – **Warranty on parts most often requires return of the parts that were replaced. DO NOT DISCARD OLD PARTS UNTIL YOU HAVE RECEIVED A DETERMINATION AS TO WHETHER THESE PARTS MUST BE RETURNED.**
- Our Warranty Department will contact and instruct you on how to return the Parts to Salsco on an RA #. Returns **MUST** be made within 30-Days from issuance of RA #. **FREIGHT CHARGES ON RETURN OF PARTS IS THE RESPONSIBILITY OF THE CUSTOMER.** Normal pre-delivery adjustments are not covered under warranty. Labor Warranties are based on reasonable time allowances as determined by Salsco, Inc. **TRAVEL TIME IS NOT REIMBURSED UNDER THE WARRANTY POLICY.**
- Be sure to put the RA form inside the box that you are shipping back; also be sure to put on the outside of the box "Return of Goods" and the RA #.
- Ship returns via a traceable method such as UPS Ground Service. Be sure that the shipment is insured for the appropriate value. If uninsured parts are lost, we cannot issue a credit.

PLEASE NOTE: ***Warranty forms should be filled out completely.***

PREVENTIVE MAINTENANCE IS YOUR BEST INSURANCE AGAINST EQUIPMENT FAILURE. BE SURE TO READ THIS MANUAL, ESPECIALLY THE MAINTENANCE, OPERATING AND CAUTION SECTIONS.

**SALSCO, INC., 105 School House Rd.
Cheshire, CT 06410
800-872-5726, 203-271-1682
203-271-2596 (Fax)
sales@salsco.com, www.salsco.com**

SALSCO WARRANTY CLAIM FORM

SALSCO, INC. 105 SCHOOL HOUSE RD. CHESHIRE, CT 06410	PHONE: 203-271-1682, 800-872-5726 FAX: 203-271-2596 EMAIL: s.clark@salsco.com WEB: www.salsco.com	
END OWNER	PHONE:	
NAME:	FAX:	
EMAIL:		
ADDRESS:		
PURCHASED FROM:	PHONE:	
NAME:	FAX:	
EMAIL:		
ADDRESS:		
EQUIP/WARRANTY INFO: (MUST BE COMPLETE)		
PURCHASE DATE:	INV #:	DATE FAILED:
MODEL #:	SERIAL #	REPAIR DATE:
HRS USED:		
WARRANTY CLAIM/WORK ORDER #:		
WAS A SALSCO RETURN AUTH. # ISSUED FOR REPAIRS OR RETURN OF PARTS: YES NO		
IF YES, RA #:		
PROBABLE CAUSE OF FAILURE:		

SALSCO WARRANTY CLAIM FORM - Continued

WORK PERFORMED/COMMENTS ON REPAIR:

SHOP LABOR RATE:

SUBMITTED BY:

TOTAL LABOR HRS TO REPAIR:

PRINTED NAME:

SALSCO PART #: DESCRIPTION:	QTY	PRICE EACH	TOTAL	INVOICE #:	

FILL IN ALL INFORMATION REQUESTED ON WARRANTY CLAIM FORM. **INCOMPLETE FORMS CANNOT BE PROCESSED & WILL BE RETURNED.** LIST ALL PARTS USED. MAKE SURE PART NUMBERS ARE CORRECT. ANY PARTS THAT YOU BELIEVE TO BE DEFECTIVE OR ANY PARTS THAT BREAK SHOULD BE RETAINED FOR POSSIBLE INSPECTION UNTIL AFTER THE WARRANTY HAS BEEN PAID OR PART HAS BEEN RETURNED. **INV. # NEEDS TO BE INCLUDED ON WARRANTY CLAIM.**

OFFICE USE ONLY

DATE REC'D:	DLR. DEL REPORT ON FILE:	YES	NO
CUST ID:	WARRANTY CLAIM ON FILE:	YES	NO
SALSCO WC:	PARTS TOTAL:		
SALSCO RA:	LABOR TOTAL:		
DATE APPROVED:	TOTAL APPROVED:		
DATE REJECTED:	REJECTED DATE:		
PROCESSED BY:	REASON:		

SALESMAN ID # _____

SALES MANAGER'S NAME _____

800-872-5726, 203-271-1682 203-271-2596 (Fax)		SALSCO, INC. 105 School House Road Cheshire, CT 06410		www.salsco.com sales@salsco.com	
DEALER DELIVERY REPORT					
MODEL:		SERIAL NO:			
DEALER:		CITY:		STATE: ZIP:	
PURCHASER:		ADDRESS:		CITY: ST: ZIP:	
<p>The undersigned dealer warrants that the above-described machine was carefully inspected, adjusted and prepared for delivery before delivery to the purchaser; that both the operation and maintenance of the machine were explained to the purchaser; and that a copy of the Owner's Instruction Manual were given to the purchaser and his attention called to Our Warranty and any operating instructions included in the manual and caution notes.</p>			<p>The undersigned purchaser certifies that the operation and maintenance of the above-described machine have been explained to him; acknowledges receipt of a copy of the Owner's Instruction Manual and Our Warranty Policy printed in said Instruction Manual and Caution Notes. I also understand that it is my responsibility to explain and make Salsco manuals available to new operators.</p>		
DATE:		DATE: PURCHASER:			
SIGN BY:		SIGN BY:			
PHONE: FAXI		PHONE:			
E-Mail		EMAIL:			

MODEL:		SERIAL NO:			
SALSCO LIMITED WARRANTY CARD					
DATE PURCHASED:					
PURCHASER:		ADDRESS:		CITY: ST: ZIP:	
EMAIL:			PHONE:		
DEALER:			STATE: CT		
Will this equipment be used commercially?			Yes	<input type="checkbox"/>	No <input type="checkbox"/>
Did Dealer service this equipment and instruct you in its care and safe operation?			Yes	<input type="checkbox"/>	No <input type="checkbox"/>
Did you receive an "Operation & Service Manual" and safety pamphlet?			Yes	<input type="checkbox"/>	No <input type="checkbox"/>
Signed _____			Purchaser _____		
NOTICE: IMPORTANT: THIS CARD MUST BE FILLED OUT COMPLETELY AND MAILED TO THE FACTORY WITHIN 10 DAYS OF PURCHASE DATE, OR YOUR LIMITED WARRANTY WILL BE VOIDED.					



105 School House Road
Cheshire, CT 06410 U.S.A.
800-872-5726, 203-271-1682, 203-271-2596 (Fax)
sales@salsco.com, www.salsco.com