

**OPERATORS AND PARTS MANUAL
MODEL(S) 616 CSV**



MANUFACTURER OF OUTDOOR POWER EQUIPMENT

Products for Turf & Lawncare, Rental Construction, Tree Care, Wood Processing, Nursery & Farm Industries

Other Salsco Equipment:

3-1/2" - 18", Gas, Diesel, and P.T.O. Wood/Brush Chippers

Chipper Shredder Vacuum - Tailgate & Truckloader Vacuums, Strawblowers, Slicer Seeders

Shaving Mills - Gas & Electric Greens Rollers

***Quality of Workmanship, Innovative
Design, Built to Last!***

105 School House Road
Cheshire, CT 06410 U.S.A.
800-872-5726, 203-271-1682, 203-271-2596 (Fax)
sales@salsco.com, www.salsco.com

TABLE OF CONTENTS
MODEL 616CSV DESCRIPTION

COVER & TABLE OF CONTENTS.....	Pages 1 – 2
STATEMENT OF FACT	Page 3
SPECIFICATIONS & FEATURES	Page 4
MACHINE REGISTRATION	Page 5
SAFETY & OPERATING INSTRUCTIONS	Pages 6-8
SERVICE & MAINTENANCE INSTRUCTIONS	Pages 9 - 11
PARTS DIAGRAMS	Pages 12-16
TORQUE CHARTS	Page 17
WARRANTY POLICY/PROCEDURE	Page 18
COPYOF WARRANTY CLAIM FORM.....	Page 19
COPY OF DEALER DELIVERY REPORT & WARRANTY CARD.....	Page 20
SERVICE SCHEDULE LOG	Page 21

SALSCO, INC.
105 School House Road
Cheshire, CT 06410
800-872-5726, 203-271-1682
203-271-2596 (Fax)

STATEMENT OF FACT

You have just purchased the highest quality, most dependable, Chipper Shredder Vacuum, on the market today. This unit has the ability to meet exact standards and perform for years with minimum downtime. HOWEVER, it cannot read nor will it understand this manual no matter how long you leave it on top of the machine.

It is your responsibility to read and understand this manual; it is also your responsibility to be certain this information is passed along to anyone who is expected to operate this equipment. Should you choose not to read, understand and pass along the information provided you, please expect equipment failure and possible injuries to persons around this equipment.

For the safety of the operator, it is **imperative** that this manual is carefully read and understood.

Once you have read this manual, it is your responsibility to be sure that all new operators read and understand this manual, especially all cautions stated.

As a manufacturer of equipment, we have a responsibility to design a safe piece of equipment. NOTE: The important safeguards and instructions in this manual are not meant to cover all possible conditions and situations that may occur. It must be understood that common sense, caution, and care are factors, which cannot be built into any product. These factors must be supplied by the person(s) caring for and operating this equipment.

ONLY YOU CAN PREVENT ACCIDENTS!!

SPECIFICATIONS & FEATURES

CHIPPER INFEED OPENING:	Outer, 14-5/8" x 21" - Inner, 4-1/8" x 6-5/16". 7 Gauge Steel.
CHIPPER HOPPER COVER:	Hinged, 11 Gauge Steel.
CHIPPER DISC HOUSING:	Lockable, Hinged, 7 Gauge Steel, Continuous Welds.
CHIPPER/ SHREDDER ASSEMBLY:	3/4" thick x 16" Diameter Impeller with 4 fully welded and gusseted blower paddles. 1-1/2" TG&P x 27-36/64" Shaft, Welded Flail Shaft Bracket assembly on 2" Diameter Tube.
CHIPPER BLADES:	4" x 5" x 1/2" Thick, Double Sided, Qty. 2.
BED KNIFE:	1/2" x 4" x 6-3/4", Adjustable & Sharpenable.
SHREDDER INFEED OPENING:	Outer, 15-13/16" x 13-13/16" - Inner, 10" x 8". 11 Gauge Steel
SHREDDER HOPPER COVER:	Hinged, 11 Gauge Steel.
SHREDDER BLADES:	Quantity 12, Hardened Steel on 4- Hardened Steel Shafts.
VACUUM HOSE:	Clear PVC Flex Hose, 10" Diameter x 10' Long.
VACUUM HOSE HANDLE:	11 Gauge Steel, with Welded Handle and Rubber Hand Guard.
VACUUM HOSE HANGER:	Removeable Hose Hanger for Ease of Transportation & Operation.
EXHAUST CHUTE:	360 Degree Swivel, No Tools Necessary for Adjustment. Easy Adjust Exhaust Deflector.
ENGINE:	Briggs & Stratton, 16HP, V-Twin OHV Vanguard, Pull Start. 9Qt. Fuel Tank.
BATTERY:	12 Volt.
CLUTCH:	Centrifugal Clutch.
AXLE:	Torflex, 1100 lb. Cap. Idler.
TIRE/WHEEL ASSEMBLIES:	18.5 x 8.5-8 Over the Road Tires.
TONGUE:	2" x 3" x 1/4" Rectangular Steel Wall, Fully Welded and Gusseted.
HITCH:	2" Ball Coupler, with Safety Chains.
JACK:	1000 lb. Swivel, Height Adjustable, Bolt on with Castor Wheel.
FENDERS:	Heavy Duty, Diamond Plate Steel.
TOW FRAME:	3" X 4" X 3/16" Rectangular Steel, Fully Welded and Gusseted.
BEARINGS:	Heavy Duty, Cast Iron, Greaseable & Self Centering.
PULLEYS:	Cast Iron with Taper Lock Centers.
BELTS:	Heavy Duty Double Banded Belt.
DEBRIS BAG:	Heavy Duty, Nylon, 26" x 36" with Lockable Draw String.
OPTION STORAGE SHELF:	Bolted on 11 Gauge Steel.
GUARDS/DECALS:	All Moving Parts Guarded. Full Set of Safety Decals.
PAINT:	Orange, Polyester Powder Coat Paint Provides Excellent Outdoor Weatherability and Offers Protection Against Ultra Violet Discoloration. All Parts Painted Separately.
DIMENSIONS:	Length: 7' 11" Width: 5' Height: 4' to Top of Shredder Infeed

Specifications & Options are subject to change without notice. 11/08

MACHINE REGISTRATION

MANUFACTURED BY:

SALSCO, INC.

105 School House Rd., Cheshire, CT 06410

800-872-5726, 203-271-1682, 203-271-2596 (Fax)

sales@salsco.com www.salsco.com

THIS MANUAL COVERS MODEL (s): 616CSV, Chipper Shredder Vacuum

This company reserves the right to discontinue, add improvements to, or change the design of any model or product at any time without obligation to improve existing machines, either by changing the design or adding new parts.

It has been and will continue to be the policy of SALSCO to update existing machines at its own discretion. Whenever possible, new designs will be made in such a way that they can be "Retro Fit" if so desired.

Record in the space provided below the model and serial number of this unit. Please retain these numbers for future reference.

No parts orders will be accepted **WITHOUT MODEL NUMBERS OR PART NUMBERS**. All part numbers are listed in this manual.

Serial Number

Model Number

NOTE: Be sure to complete your warranty card. This will insure immediate processing of any warranty claims.

READ AND UNDERSTAND THIS MANUAL BEFORE STARTING THE MACHINE

11/08

CAUTIONS

SALSCO CHIPPER / SHREDDER / VAC

1. **ALWAYS** use protective eyewear when machine is in operation.
2. **ALWAYS** use gloves and wear ear protection when machine is in operation.
3. **NEVER** put hands into or near Chipper/Shredder/Vac intake or discharge openings.
4. **NEVER** run with guards removed.
5. **ALWAYS** allow machine to cool off, remove key and put engine in neutral before attempting any maintenance, or repair.
6. **DO NOT** operate with loose clothing or long unrestrained hair. Be sure vines and branches are not wrapped around your body parts.
7. **DO NOT** operate on ice or any other slippery surface. Be sure area around machine is clear and clean. You don't want to trip into the machine.
8. **NEVER** leave machine running unattended, especially around youngsters or persons not instructed in the safe operation of this machine.
9. **NEVER** do any work on this machine without disconnecting the spark plug.
10. **READ** federal guidelines (pages 9 - 10) provided with this manual.

BRUSH CHIPPERS
ANSI Z133.1-2006
American National Standard for Arboricultural Operations
Safety Requirements

5.3 Brush Chippers

- 5.3.1 The items contained in section 5.1 shall always be included in the review of this section.
- 5.3.2 Access panels (for example, guards) for maintenance and adjustment, including discharge chute and cutter housing, shall be closed and secured prior to starting the engine of brush chippers. These access panels shall not be opened or unsecured until the engine and all moving parts have come to a complete stop (see Annex C, General Safety Procedures That Apply to All Tree Work).
- 5.3.3 Rotary drum or disc brush chippers not equipped with a mechanical infeed system shall be equipped with an infeed hopper not less than 85 inches (2.15 m) measured from the blades or knives to ground level over the center line of the hopper. Side members of the infeed hopper shall have sufficient height so as to prevent workers from contacting the blades or knives during operations.
- 5.3.4 Rotary drum or disc brush chippers not equipped with a mechanical infeed system shall have a flexible anti-kickback device installed in the infeed hopper to reduce the risk of injury from flying chips and debris.
- 5.3.5 Chippers equipped with a mechanical infeed system shall have a quick-stop and reversing device on the infeed system. The activating mechanism for the quick-stop and reversing device shall be located across the top, along each side, and close to the feed end of the infeed hopper within easy reach of the worker.
- 5.3.6 Vision, hearing, and/or other appropriate personal protective equipment shall be worn when in the immediate area of a brush chipper in accordance with section 3.4, Personal Protective Equipment.
- 5.3.7 Arborists, mechanics, and other workers shall not, under any circumstances, reach into the infeed hopper when the cutter disc, rotary drum, or feed rollers are moving.
- 5.3.8 When trailer chippers are detached from the vehicles, they shall be chocked or otherwise secured in place.
- 5.3.9 When in a towing position, chipper safety chains shall be crossed under the tongue of the chipper and properly affixed to the towing vehicle.
- 5.3.10 See section 8.6, Brush Removal and Chipping, for additional requirements.

BRUSH REMOVAL AND CHIPPING
ANSI Z133.1-2006
American National Standard for Arboricultural Operations
Safety Requirements

8.6 Brush Removal and Chipping

- 8.6.1 Traffic control around the jobsite shall be established prior to the start of chipping operations along roads and highways (see section 3.2, Traffic Control Around the Jobsite).
- 8.6.2 Brush and logs shall not be allowed to create hazards in the work areas.
- 8.6.3 To prevent an entanglement hazard, loose clothing, climbing equipment, body belts, harnesses, lanyards, or gauntlet-type gloves (for example, long-cuffed lineman's or welder's gloves) shall not be worn while operating chippers.
- 8.6.4 Personal protective equipment shall be worn when in the immediate area of chipping operations in accordance with section 3.4, Personal Protective Equipment, of this standard.
- 8.6.5 Training shall be provided in the proper operation, feeding, starting, and shutdown procedures for the chipper being used.
- 8.6.6 Maintenance shall be performed only by those persons authorized by the employer and trained to perform such operations.
- 8.6.7 Brush and logs shall be fed into chippers, butt or cut end first, from the side of the feed table center line, and the operator shall immediately turn away from the feed table when the brush is taken into the rotor or feed rollers. Chippers should be fed from the curb-side whenever practical.
- 8.6.8 The brush chipper discharge chute or cutter housing cover shall not be raised or removed while any part of the chipper is turning or moving. Chippers shall not be used unless a discharge chute of sufficient length or design is provided that prevents personal contact with the blades (see Annex C, General Safety Procedures That Apply to All Tree Work).
- 8.6.9 Foreign material, such as stones, nails, sweepings, and rakings, shall not be fed into chippers.
- 8.6.10 Small branches shall be fed into chippers with longer branches or by being pushed with a long stick.
- 8.6.11 Hands or other parts of the body shall not be placed into the infeed hopper. Leaning into or pushing material into infeed hoppers with feet is prohibited.
- 8.6.12 While material is being fed into the chipper infeed hopper chute, pinch points continually develop within the material being chipped and between the material and machine. The operator shall be aware of this situation and respond accordingly.
- 8.6.13 When feeding a chipper during roadside operations, the operator shall do so in a manner that prevents him or her from stepping into traffic or being pushed into traffic by the material that is being fed into the chipper.
- 8.6.14 When using a winch in chipper operations, the operator shall ensure that the winch cable is properly stored before initiating chipper operations.
- 8.6.15 Refer to section 5.3, Brush Chippers, for additional information.

OPERATING INSTRUCTIONS

SALSCO CHIPPER / SHREDDER / VAC

1. Be sure all guards are in place.
2. Check both chambers to be sure they are free and clear of debris.
3. Check engine oil and fuel levels, as per engine manufacturers specifications.
4. Set engine throttle just above idle, and set choke.
5. Start engine and let idle for a few minutes to warm up.

***CAUTION: NEVER LOOK INTO EITHER CHUTE. NEVER REACH, FOR ANY REASON, INTO ANY PART OF THIS MACHINE.**

6. Bring engine up to full R.P.M. in small increments. Unit is ready to use when engine is running at full R.P.M.
7. In chipper side, machine will take a maximum of 3" diameter limbs and branches.
8. In shredder hopper, machine will take a maximum of 1" diameter branches, leaves, paper, etc.

***CAUTION: WHEN USING SHREDDER SIDE, BE SURE BRANCHES, VINES, ETC. ARE NOT WRAPPED AROUND YOUR BODY PARTS.**

9. Rake leaves, small branches and leftover debris into hose. **HINT:** Leave hose attached to bungee cord and if debris gets stuck in hose, shake hose to loosen debris.

HINTS

1. When putting brush in shredder hopper, throw material in and let it go, do not put it in. IF IT GETS STUCK, LEAVE IT. The next branch will pull it in. **DO NOT REACH INTO HOPPER.**
2. When using the chipper side and you have a **SHORT PIECE OF WOOD BOUNCING AROUND IN THE HOPPER, LEAVE IT.** The next branch will push it in. **DO NOT REACH INTO THE HOPPER FOR ANY REASON.**
3. When at low idle, you may hear a loud clanking noise. This is most likely the flail blades. Noise should disappear with a higher R.P.M.
4. When feeding leaves into the shredder hopper or vacuum hose, feed them slowly. A large volume of wet leaves at once can clog the machine.

OPERATING INSTRUCTIONS
(Continued)
SALSCO CHIPPER / SHREDDER / VAC

5. Before turning machine off, let it run at full RPM a few minutes to make sure that all material has been discharged.
6. When machine is new or when putting on a new belt: apply a finger full of grease to the underside of belt. Be sure engine is off. **NEVER REACH INTO BELT AREA OR BEHIND BELT GUARD WHILE ENGINE IS RUNNING.**

**NEVER REACH INTO, OR LOOK INTO CHUTES OR HOPPERS FOR ANY REASON
WHILE RUNNING MACHINE.**

**WHILE PERFORMING MAINTENANCE OR REPAIR, ALWAYS REMOVE KEY
FROM ENGINE. ENGINE IS IN NEUTRAL.**

SERVICE SCHEDULE

SALSCO CHIPPER / SHREDDER / VAC

1. ENGINE - Follow service and maintenance schedule set forth by manufacturer in engine manual.
2. Grease main bearings once a day or as needed. **DO NOT OVER-GREASE.** Wipe extra grease off bearings. Grease engine slides weekly.
3. Be sure to clean entire machine, especially around engine box, after using.
4. TO SHARPEN/REPLACE CHIPPER BLADES: Remove key from engine. Remove spark plug wire. Engine is in neutral. Remove bolts on impeller housing and open housing. Sharpen blades as you would sharpen a lawn mower, under angle edge only. Sharpen blades as evenly as possible.

CAUTION: DO NOT, UNDER ANY CIRCUMSTANCES, START ENGINE WHEN UNIT IS OPEN OR AT ANY TIME WHEN PERFORMING SERVICE OR MAINTENANCE.

CAUTION: When installing blades, be sure to use Locktite (Salsco uses Blue 242 Locktite) and replace all hardware.

CALL Salsco, Inc., 800-872-5726, OR EMAIL US sales@salsco.com AND REQUEST INFORMATION ON OUR BLADE SHARPENING SERVICE!

HINT: It is strongly recommended to have a set of blades and screws on the shelf to prevent downtime.

HINT: Blades need sharpening when unit stops or slows down feeding itself. If you have to push material in, then the chipper blades need to be sharpened.

5. **REPLACE FLAIL BLADES:** Remove key from engine. Engine is in neutral. Loosen split collars, remove damaged flail blades from shaft. Flail blades cannot be sharpened. Replace damaged flail blades and reassemble. Be sure when replacing flail blades to put biting edge on leading side into rotation.

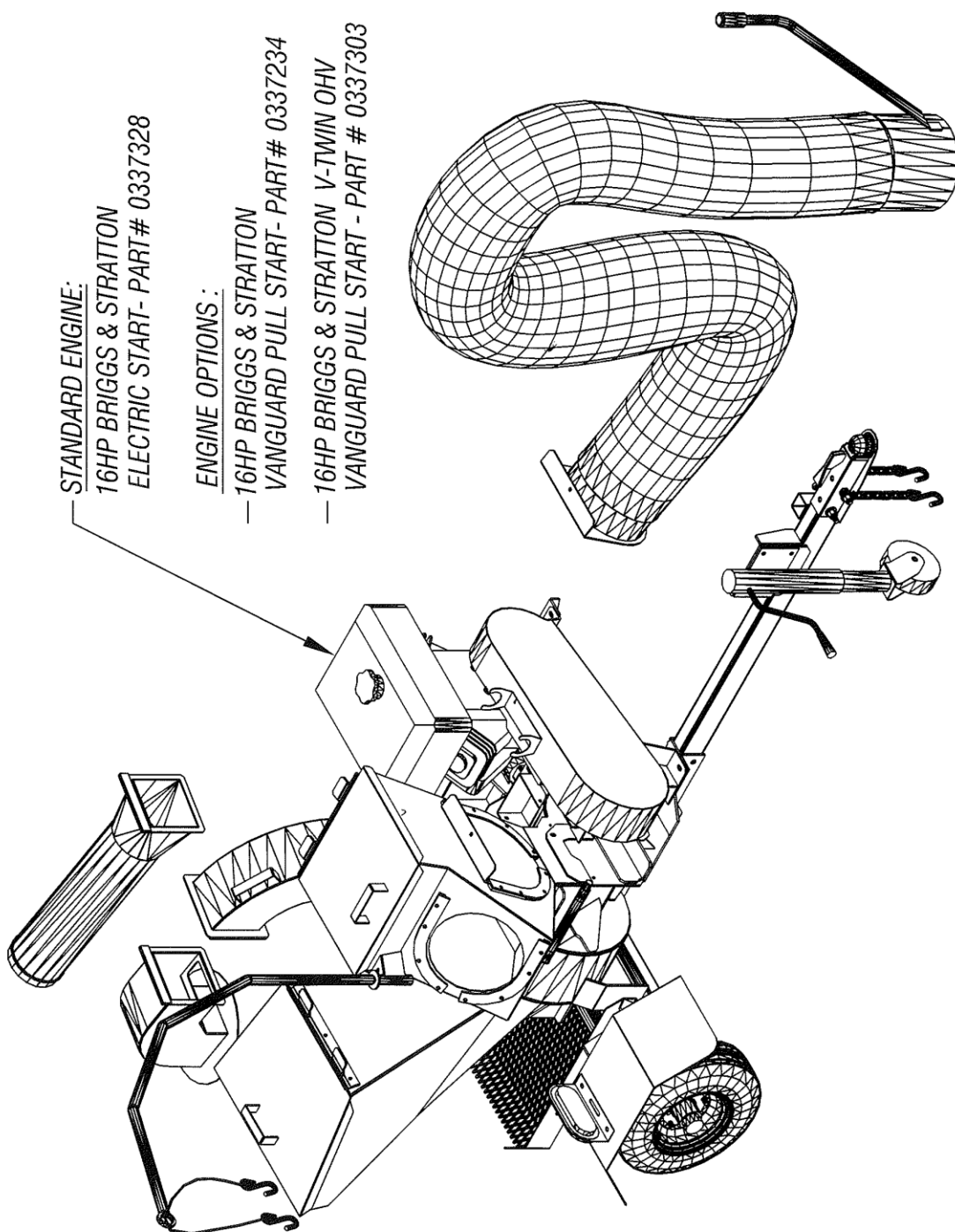
HINT: Pay attention to spacer positions.

Check belt periodically. Tighten as necessary. Remove key from engine, engine is in neutral. Remove belt guard to tighten belt.

HINT: When machine is new or when putting on a new belt, apply a finger full of grease to underside of belt.

ATTENTION TO SERVICE AND MAINTENANCE PREVENTS DOWNTIME

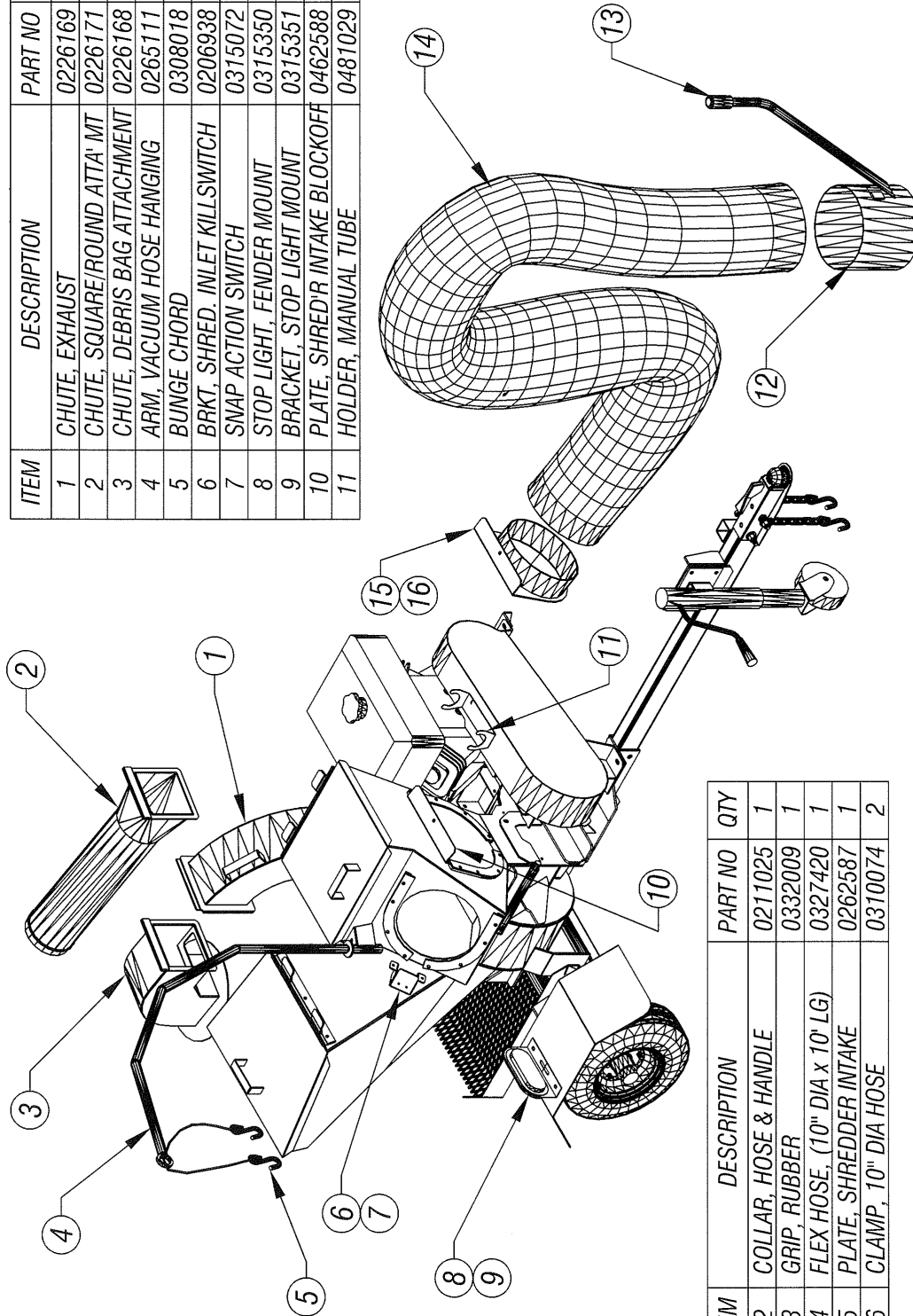
ISSUED: 10-06-2008



616CSV - CHIPPER / SHREDDER / VAC - DWG #1

ISSUED: 10-06-2008

ITEM	DESCRIPTION	PART NO	QTY
1	CHUTE, EXHAUST	0226169	1
2	CHUTE, SQUARE/ROUND ATTA' MT	0226171	1
3	CHUTE, DEBRIS BAG ATTACHMENT	0226168	1
4	ARM, VACUUM HOSE HANGING	0265111	1
5	BUNGE CHORD	0308018	1
6	BRKT, SHRED. INLET KILLSWITCH	0206938	1
7	SNAP ACTION SWITCH	0315072	1
8	STOP LIGHT, FENDER MOUNT	0315350	2
9	BRACKET, STOP LIGHT MOUNT	0315351	2
10	PLATE, SHRED'R INTAKE BLOCKOFF	0462588	1
11	HOLDER, MANUAL TUBE	0481029	1

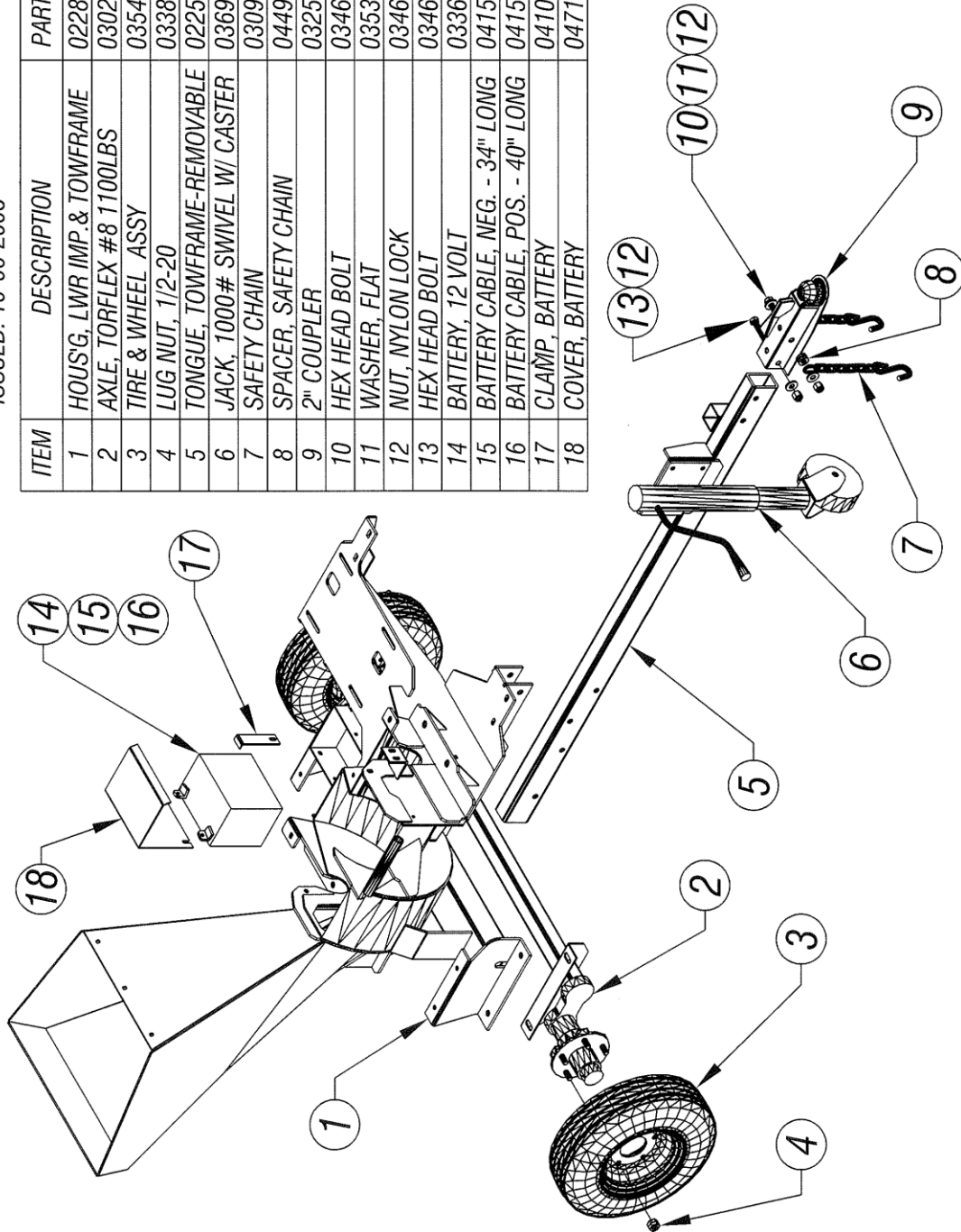


ITEM	DESCRIPTION	PART NO	QTY
12	COLLAR, HOSE & HANDLE	0211025	1
13	GRIP, RUBBER	0332009	1
14	FLEX HOSE, (10" DIA x 10' LG)	0327420	1
15	PLATE, SHREDDER INTAKE	0262587	1
16	CLAMP, 10" DIA HOSE	0310074	2

616CSV - CHIPPER / SHREDDER / VAC - DWG #2

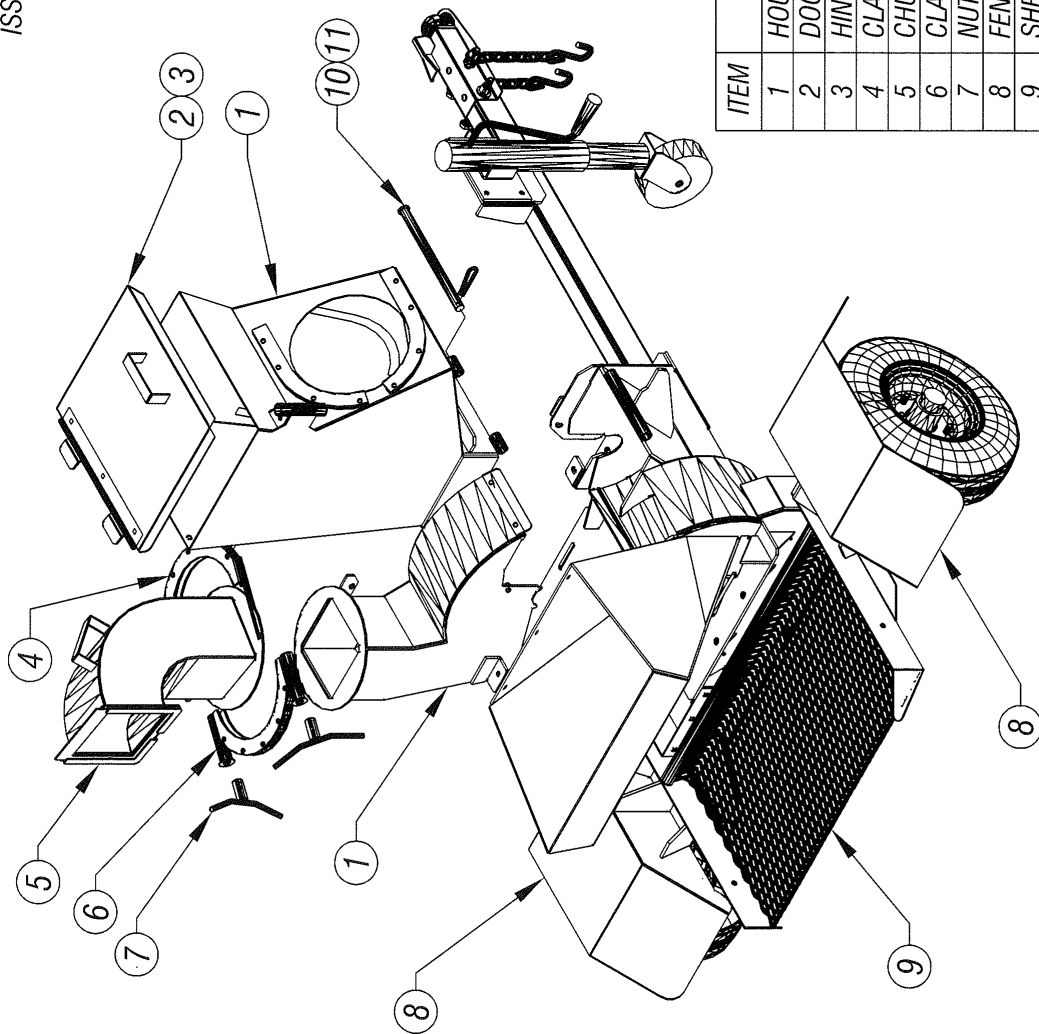
ISSUED: 10-06-2008

ITEM	DESCRIPTION	PART NO	QTY
1	HOUS'G, LWR IMP & TOWFRAME	0228265	1
2	AXLE, TORFLEX #8 1100LBS	0302100	1
3	TIRE & WHEEL ASSY	0354020	2
4	LUG NUT, 1/2-20	0338306	10
5	TONGUE, TOWFRAME-REMOVABLE	0225090	1
6	JACK, 1000# SWIVEL W/ CASTER	0369047	1
7	SAFETY CHAIN	0309018	2
8	SPACER, SAFETY CHAIN	0449203	2
9	2" COUPLER	0325007	1
10	HEX HEAD BOLT	0346422	1
11	WASHER, FLAT	0353181	2
12	NUT, NYLON LOCK	0346422	2
13	HEX HEAD BOLT	0346410	1
14	BATTERY, 12 VOLT	0336008	1
15	BATTERY CABLE, NEG. - 34" LONG	0415336	1
16	BATTERY CABLE, POS. - 40" LONG	0415337	1
17	CLAMP, BATTERY	0410028	1
18	COVER, BATTERY	0471330	1



616CSV - CHIPPER / SHREDDER / VAC - DWG #3

ISSUED: 10-06-2008

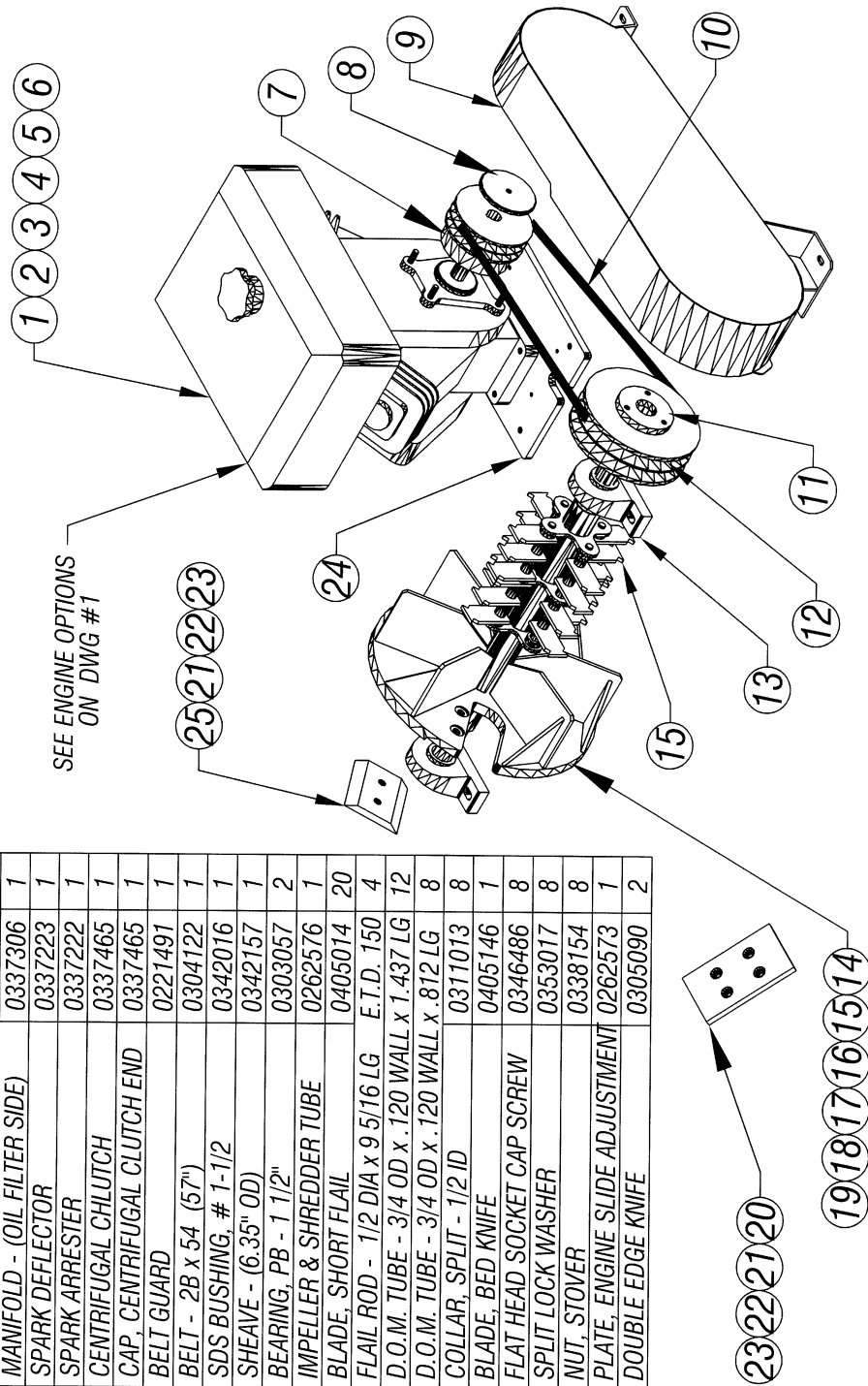


616CSV - CHIPPER / SHREDDER / VAC - DWG #4

ITEM	DESCRIPTION	PART NO	QTY
1	HOUS'G, UP'R IMPEL'R & SHRED'R	0228266	1
2	DOOR, SHREDDER IN-FEED	0260077	1
3	HINGE, SHREDDER IN-FEED	0424038	1
4	CLAMP, EXHAUST CHUTE-FRONT	0210170	1
5	CHUTE, EXHAUST	0226169	1
6	CLAMP, EXHAUST CHUTE-REAR	0210124	1
7	NUT, WING - 1/2 - 13	0238504	2
8	FENDER - LEFT & RIGHT	0216051	2
9	SHELF, ACCESSORY	0283067	1
10	PIN, HOUSING LOCKING	0240160	1
11	COTTER PIN	0340009	1

ITEM	DESCRIPTION	PART NO	QTY
1	ENGINE, B&S 16HP ELEC. START	0337328	1
2	MUFFLER - (OIL FILTER SIDE)	0337305	1
3	ADAPTOR - OIL FILTER & GASKET	0337307	1
4	MANIFOLD - (OIL FILTER SIDE)	0337306	1
5	SPARK DEFLECTOR	0337223	1
6	SPARK ARRESTER	0337222	1
7	CENTRIFUGAL CHLUTCH	0337465	1
8	CAP, CENTRIFUGAL CLUTCH END	0337465	1
9	BELT GUARD	0221491	1
10	BELT - 2B x 54 (57")	0304122	1
11	SDS BUSHING, # 1-1/2	0342016	1
12	SHEAVE - (6.35" OD)	0342157	1
13	BEARING, PB - 1 1/2"	0303057	2
14	IMPELLER & SHREDDER TUBE	0262576	1
15	BLADE, SHORT FLAIL	0405014	20
16	FLAIL ROD - 1/2 DIA x 9 5/16 LG	E.T.D. 150	4
17	D.O.M. TUBE - 3/4 OD x .120 WALL x 1.437 LG		12
18	D.O.M. TUBE - 3/4 OD x .120 WALL x .812 LG		8
19	COLLAR, SPLIT - 1/2 ID	0311013	8
20	BLADE, BED KNIFE	0405146	1
21	FLAT HEAD SOCKET CAP SCREW	0346486	8
22	SPLIT LOCK WASHER	0353017	8
23	NUT, STOVER	0338154	8
24	PLATE, ENGINE SLIDE ADJUSTMENT	0262573	1
25	DOUBLE EDGE KNIFE	0305090	2

ISSUED: 10-19-2009



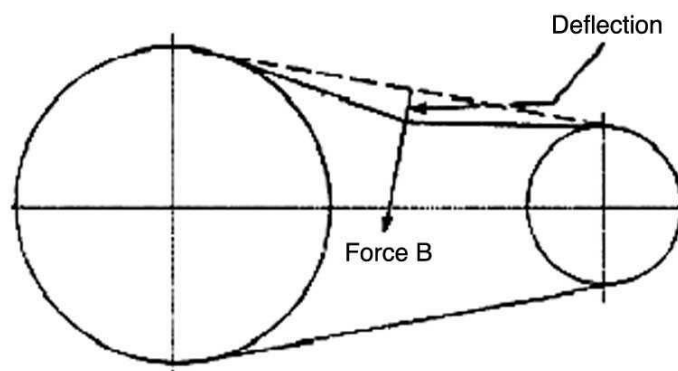
616CSV - CHIPPER / SHREDDER / VAC - DWG #5

Below is a quick reference chart for various “Flat Head Cap Screws” and the torque recommendations.

VALUES ARE STATED IN FOOT POUNDS

BOLT SIZE	Thds Per Inch	SAE Grade 5	SAE Grade 8
$\frac{1}{4}$	20	10	14
	28	---	---
$\frac{5}{16}$	18	19	29
	24	---	---
$\frac{3}{8}$	16	33	47
	24	---	---
$\frac{7}{16}$	14	54	78
	20	---	---
$\frac{1}{2}$	13	78	119
	20	---	---
$\frac{9}{16}$	12	114	169
	18	---	---
$\frac{5}{8}$	11	154	230
	11	---	---
$\frac{3}{4}$	10	257	380
	10	---	---
$\frac{7}{8}$	9	382	600
	9	---	---
1	8	587	700
	8	---	---

Drive Belt Tension Measurement by Deflection



Deflection should be $\frac{3}{8}$ " when 8-12 lbs. push is applied at "B"

WARRANTY POLICY

Your Salsco Commercial or Turf Equipment product is a commercial type product and is normally manufactured and sold for commercial or industrial use. **Salsco will, for the original purchaser, for one (1) year from the date of purchase (90 days if used for rental purposes) repair or replace, free of charge, any part or parts found to be defective in material, workmanship or both.** Any transportation or shipping charges will be borne by the purchaser. If, during the warranty period stated above, the product does not function properly due to defect, simply contact Salsco and follow the Warranty Procedures included in this manual.

This warranty **does not** include incidental or consequential damages and is exclusive of any implied warranties.

This warranty **does not** cover normal maintenance parts, including, but not limited to hoses, chains, belts, filters, lubricants, etc.

This warranty **does not** include parts or components, which are covered under the original manufacturer warranty, including, but not limited to engines, pumps, and motors.

WARRANTY PROCEDURE

In order for Salsco to process your warranty claims in a timely manner you must follow the simple procedures listed below:

MACHINE OR PART FAILURE

- a) Call our service department for helpful instruction on how to correct or repair the problem. Preventive maintenance will also be suggested.
- b) Fill in all information requested on warranty claim form, a copy of which is included in this manual, (date of purchase, company name, address, etc.).
- c) List all parts used. Make sure part numbers are correct. You can obtain these from your manual. Any parts that you believe to be defective or any parts that break should be retained for possible inspection until after the warranty has been paid or part has been replaced.

PLEASE NOTE: *Warranty Claims will not be processed if Warranty Cards and Dealer Delivery Reports have not been returned to Salsco*

**PREVENTIVE MAINTENANCE IS YOUR BEST INSURANCE AGAINST EQUIPMENT FAILURE.
BE SURE TO READ THIS MANUAL, ESPECIALLY THE MAINTENANCE, OPERATING AND
CAUTION SECTIONS.**

**SALSCO, INC., 105 School House Rd., Cheshire, CT 06410
800-872-5726, 203-271-1682
203-271-2596 (Fax)
sales@salsco.com, www.salsco.com**

12/99

WARRANTY CLAIM FORM

SALSCO, INC.
105 School House Rd.
Cheshire, CT 06410

Phone: (203) 271-1682, (800) 872-5726
Fax: (203) 271-2596
Email: s.clark@salsco.com
Website: www.salsco.com

END OWNER**Date Submitted:**

Name:		Phone:		Work Order #:	
Email:		Fax:		Office Use Only	
Address:				Date Rec'd	
				Cust ID:	
				Salsco WC	
				Salsco RA	
PURCHASED FROM				Date Approved:	
Name:		Phone:		Date Rejected:	
Email:		Fax:		Processed By:	
Address:				Dir. Del Report on File: YES NO	
				Warranty Card on File: YES NO	
				Part(s) Total:	
Equipment/Warranty Information (Must be complete)				Labor Total:	
Purchase Date:		Invoice #		Date Failed:	
Model #:		Serial #:		Repair Date:	
Hrs Used:		Primary Use:		Reason for Rejection:	
Warranty Claim/Work Order#:					
Was a Salsco Return Authorization # issued for repairs or					
Return of Parts? YES NO				Suggested Preventative Maint:	
Probable Cause of Failure:					
Work Performed/Comments on Repair:					
Shop Labor Rate:				Submitted By:	
Total Labor Hours to Repair:				Printed Name:	
Parts Required for repair					
Salsco Part #: Description:				Qty.	Price Each
					Total
					Inv #
					\$
					\$
					\$
					\$
<p>Fill in all information requested on warranty claim form.</p> <p>INCOMPLETE FORMS CANNOT BE PROCESSED & WILL BE RETURNED</p> <p>List all parts used. Make sure part numbers are correct. Any parts that you believe to be defective or any parts that break should be retained for possible inspection until after the warranty has been paid or part has been replaced.</p>					

SALESMAN ID # _____

SALES MANAGER'S NAME _____

800-872-5726, 203-271-1682 203-271-2596 (Fax)		SALSCO, INC. 105 School House Road Cheshire, CT 06410		www.salsco.com sales@salsco.com	
DEALER DELIVERY REPORT					
MODEL:		SERIAL NO:			
DEALER:		CITY:		STATE: ZIP:	
PURCHASER:		ADDRESS:		CITY: ST: ZIP:	
The undersigned dealer warrants that the above-described machine was carefully inspected, adjusted and prepared for delivery before delivery to the purchaser; that both the operation and maintenance of the machine were explained to the purchaser; and that a copy of the Owner's Instruction Manual were given to the purchaser and his attention called to Our Warranty and any operating instructions included in the manual and caution notes.			The undersigned purchaser certifies that the operation and maintenance of the above-described machine have been explained to him; acknowledges receipt of a copy of the Owner's Instruction Manual and Our Warranty Policy printed in said Instruction Manual and Caution Notes. I also understand that it is my responsibility to explain and make Salsco manuals available to new operators.		
DATE:		DATE:		PURCHASER:	
SIGN BY:		SIGN BY:			
PHONE:		FAX:		PHONE:	
E-Mail				EMAIL:	

MODEL:		SERIAL NO:			
<u>SALSCO LIMITED WARRANTY CARD</u>					
DATE PURCHASED:					
PURCHASER:		ADDRESS:		CITY: ST: ZIP:	
EMAIL:			PHONE:		
DEALER:			STATE: CT		
Will this equipment be used commercially?				Yes	No
Did Dealer service this equipment and instruct you in its care and safe operation?				Yes	No
Did you receive an "Operation & Service Manual" and safety pamphlet?				Yes	No
Signed			Purchaser		
<u>NOTICE:</u> IMPORTANT: THIS CARD MUST BE FILLED OUT COMPLETELY AND MAILED TO THE FACTORY WITHIN 10 DAYS OF PURCHASE DATE, OR YOUR LIMITED WARRANTY WILL BE VOIDED.					

SERVICE RECORD

If kept properly, this schedule will help track problems in the future.

[illegible]

MODEL # _____ S/N _____

DATE PURCHASED: _____