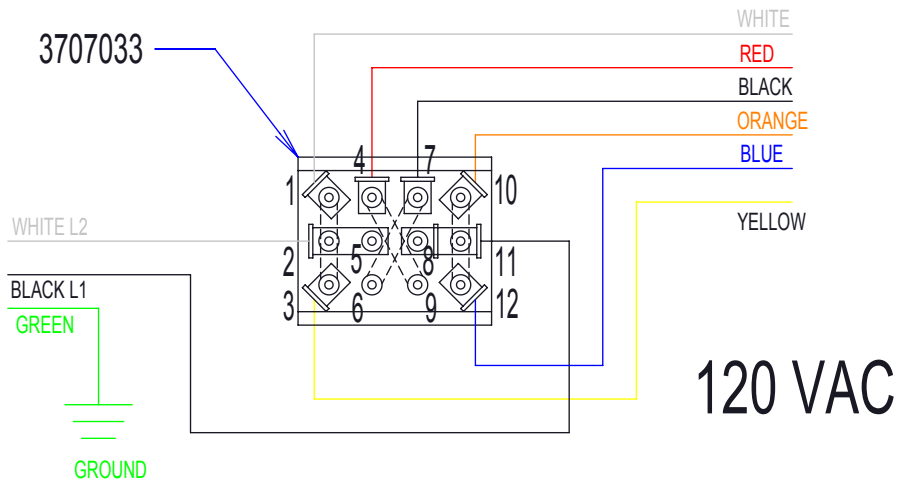
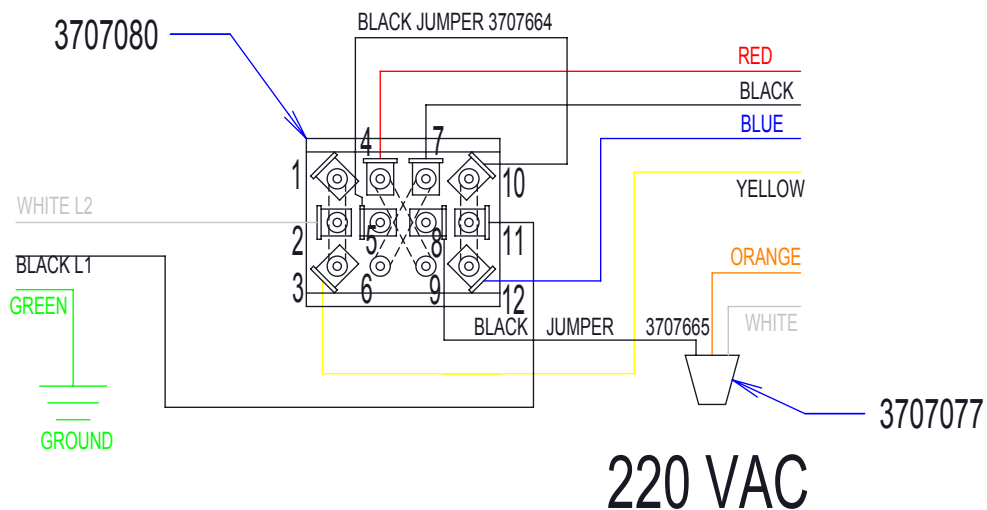


# 365 - WIRING FOR STANDARD PRODUCTION AT 115 VAC



MODEL 365 WITH MOTOR 3707770 COMES STANDARD WITH SWITCH 3707033

# 365 - WIRING CHANGE FOR 220 VAC APPLICATION



FOR 220 VOLT APPLICATIONS, CHANGE SWITCH TO 3707080, ADD JUMPER WIRE 3707664, JUMPER WIRE 3707665 AND WIRE NUT 3707077 AND WIRE AS SHOWN ABOVE.