

**Salsco, INC.**  
LEADER BY DESIGN

**MADE IN THE U.S.A**

**OPERATORS AND PARTS MANUAL  
12" PTO SHAVING MILL**



**MANUFACTURER OF OUTDOOR POWER EQUIPMENT**

**Products for Turf & Lawn care, Rental, Construction, Tree care, Wood Processing, Nursery & Farm Industries**

*Other Salsco Equipment*

**3-1/2" - 18", Gas, Diesel, and P.T.O, Wood/Brush Chippers  
Chipper Shredder Vacuums - Tailgate & Truckloader Vacuums  
Shaving Mills - Gas and Electric Greens Rollers**

---

***Quality of Workmanship, Innovative  
Design, Built to Last!***

105 School House Road  
Cheshire, CT 06410 U.S.A.  
800-872-5726, 203-271-1682, 203-271-2596 (Fax)  
sales@salsco.com, www.salsco.com

**TABLE OF CONTENTS**  
**12" PTO SHAVING MILL MANUAL**

COVER & TABLE OF CONTENTS.....	Pages 1 – 2
STATEMENT OF FACT .....	Page 3
MACHINE REGISTRATION .....	Page 4
CORRUGATED BLADE DRAWING.....	Page 5
PARTS DIAGRAMS .....	Pages 6 - 17
TORQUE CHARTS .....	Page 18
WARRANTY POLICY & PROCEDURE .....	Page 19
COPY OF WARRANTY CLAIM FORM.....	Page 20
COPY OF DEALER DELIVERY REPORT & WARRANTY CARD.....	Page 21
SERVICE SCHEDULE LOG .....	Page 22

**SALSCO, INC.**  
105 School House Road  
Cheshire, CT 06410 USA  
800-872-5726, 203-271-1682  
203-271-2596 (Fax)  
[www.salsco.com](http://www.salsco.com), [sales@salsco.com](mailto:sales@salsco.com)

## **STATEMENT OF FACT**

You have just purchased the highest quality, most dependable, Shaving Mill on the market today. This unit has the ability to meet exact standards and perform for years with minimum downtime. **HOWEVER**, it cannot read nor will it understand this manual no matter how long you leave it on top of the machine.

It is your responsibility to read and understand this manual; it is also your responsibility to be certain this information is passed along to anyone who is expected to operate this equipment. Should you choose not to read, understand and pass along the information provided you, please expect equipment failure and possible injuries to persons around this equipment.

For the safety of the operator, it is imperative that this manual is carefully read and understood.

Once you have read this manual, it is your responsibility to be sure that all new operators read and understand this manual, especially all cautions stated.

As a manufacturer of equipment, we have a responsibility to design a safe piece of equipment. NOTE: The important safeguards and instructions in this manual are not meant to cover all possible conditions and situations that may occur. It must be understood that common sense, caution, and care are factors, which cannot be built into any product. These factors must be supplied by the person(s) caring for and operating this equipment.

**ONLY YOU CAN PREVENT ACCIDENTS!**

## **MACHINE REGISTRATION**

MANUFACTURED BY:

SALSCO, INC.  
105 School House Rd., Cheshire, CT 06410  
800-872-5726, 203-271-1682, 203-271-2596 (Fax)  
[sales@salsco.com](mailto:sales@salsco.com) [www.salsco.com](http://www.salsco.com)

THIS MANUAL COVERS MODEL (s): \_\_\_\_\_, \_\_\_\_\_

This company reserves the right to discontinue, add improvements to, or change the design of any model or product at any time without obligation to improve existing machines, either by changing the design or adding new parts.

It has been and will continue to be the policy of SALSCO to update existing machines at its own discretion. Whenever possible, new designs will be made in such a way that they can be "Retro Fit" if so desired.

Record in the space provided below the model and serial number of this unit. Please retain these numbers for future reference.

**NO PARTS ORDERS** will be accepted **WITHOUT MODEL NUMBERS OR PART NUMBERS.** All part numbers are listed in this manual.

\_\_\_\_\_  
Serial Number

\_\_\_\_\_  
Model Number

NOTE: Be sure to complete your warranty card. This will insure immediate processing of any warranty claims.

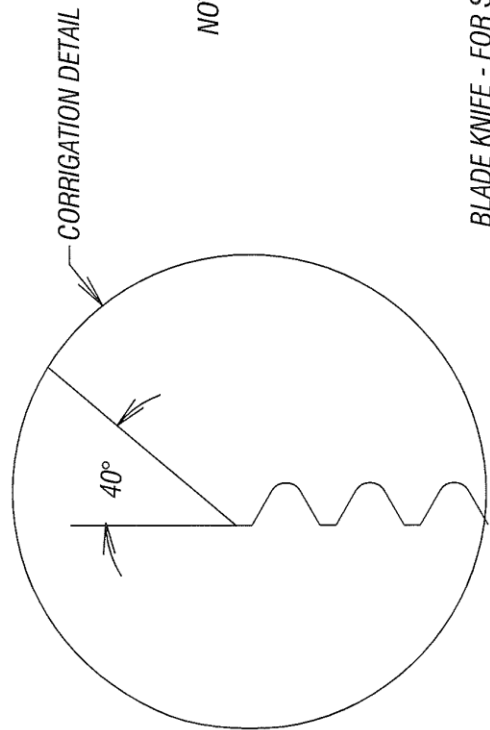
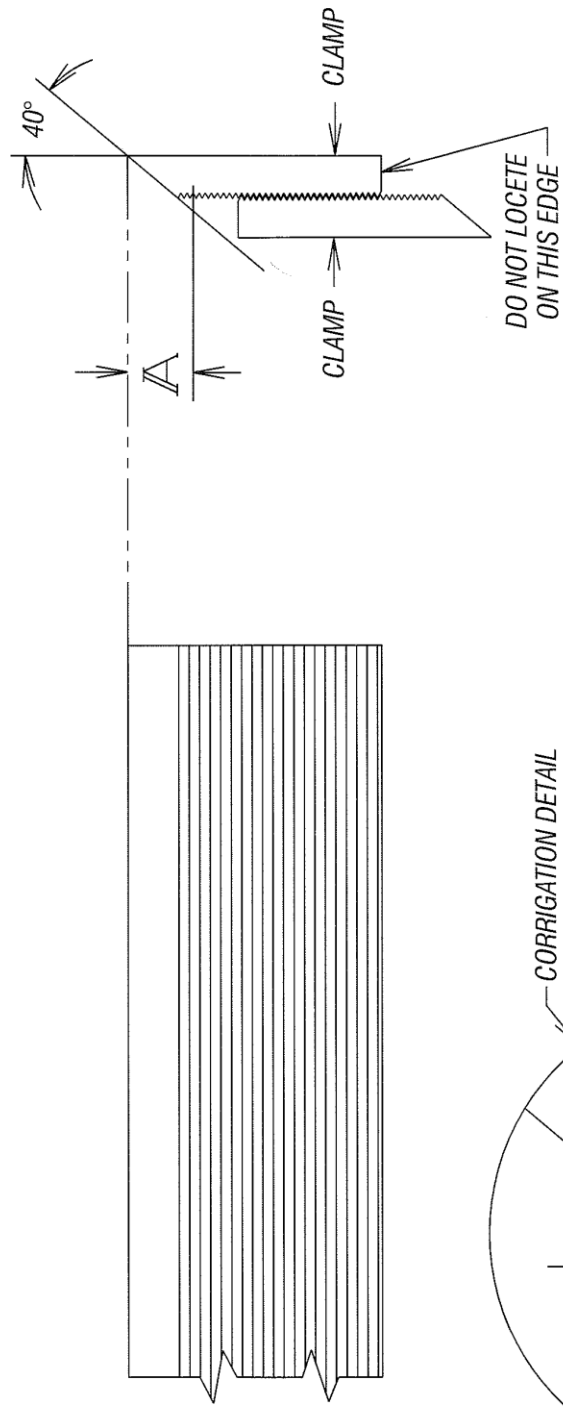
**READ AND UNDERSTAND THIS MANUAL BEFORE STARTING THE MACHINE**

1/06

ITEM	DESCRIPTION	PART NO	QTY
X	XXXXXXXXXXXXXXXXXXXXX	XXXXXX	X

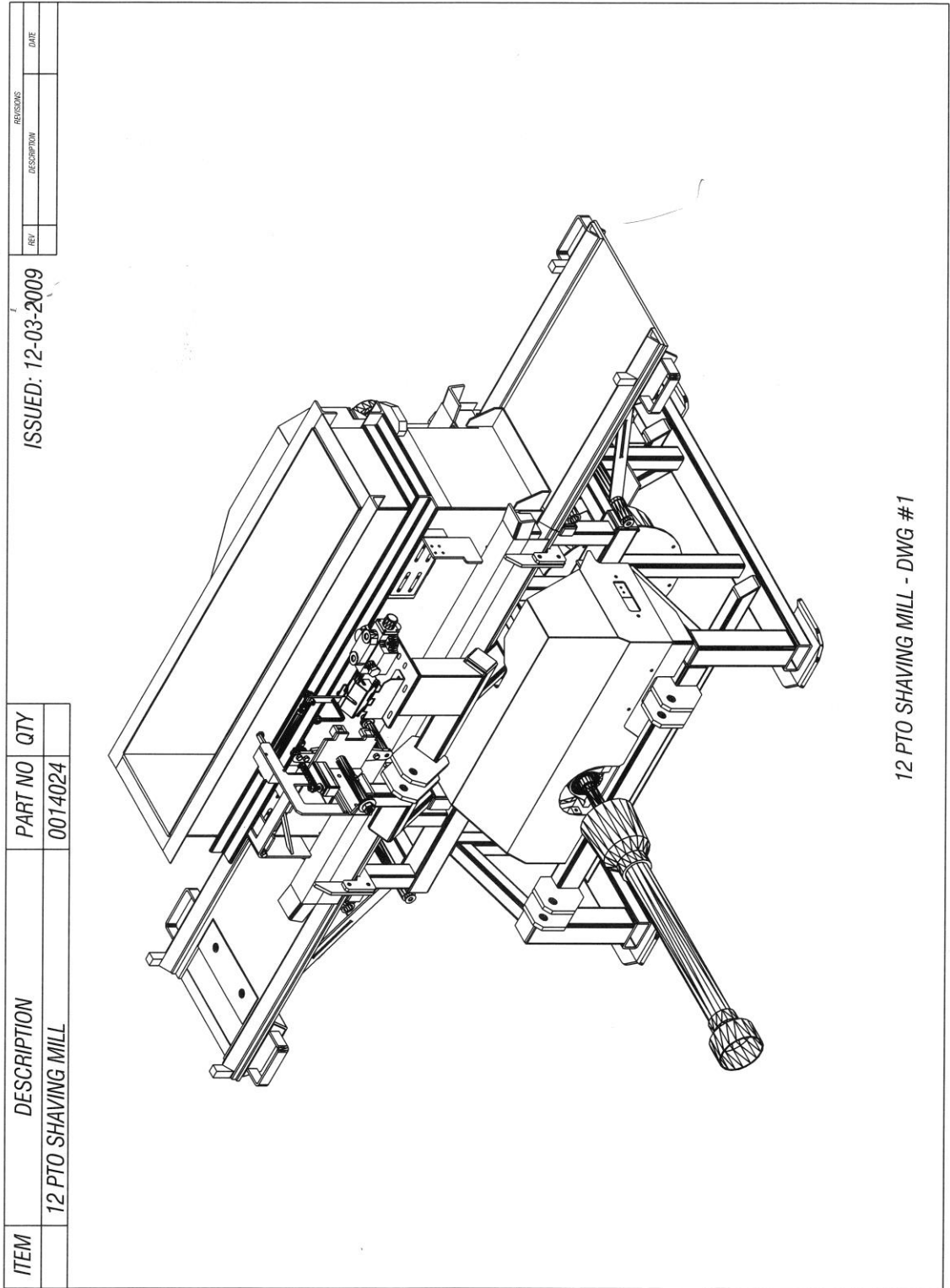
REVISES		
REV	DESCRIPTION	DATE

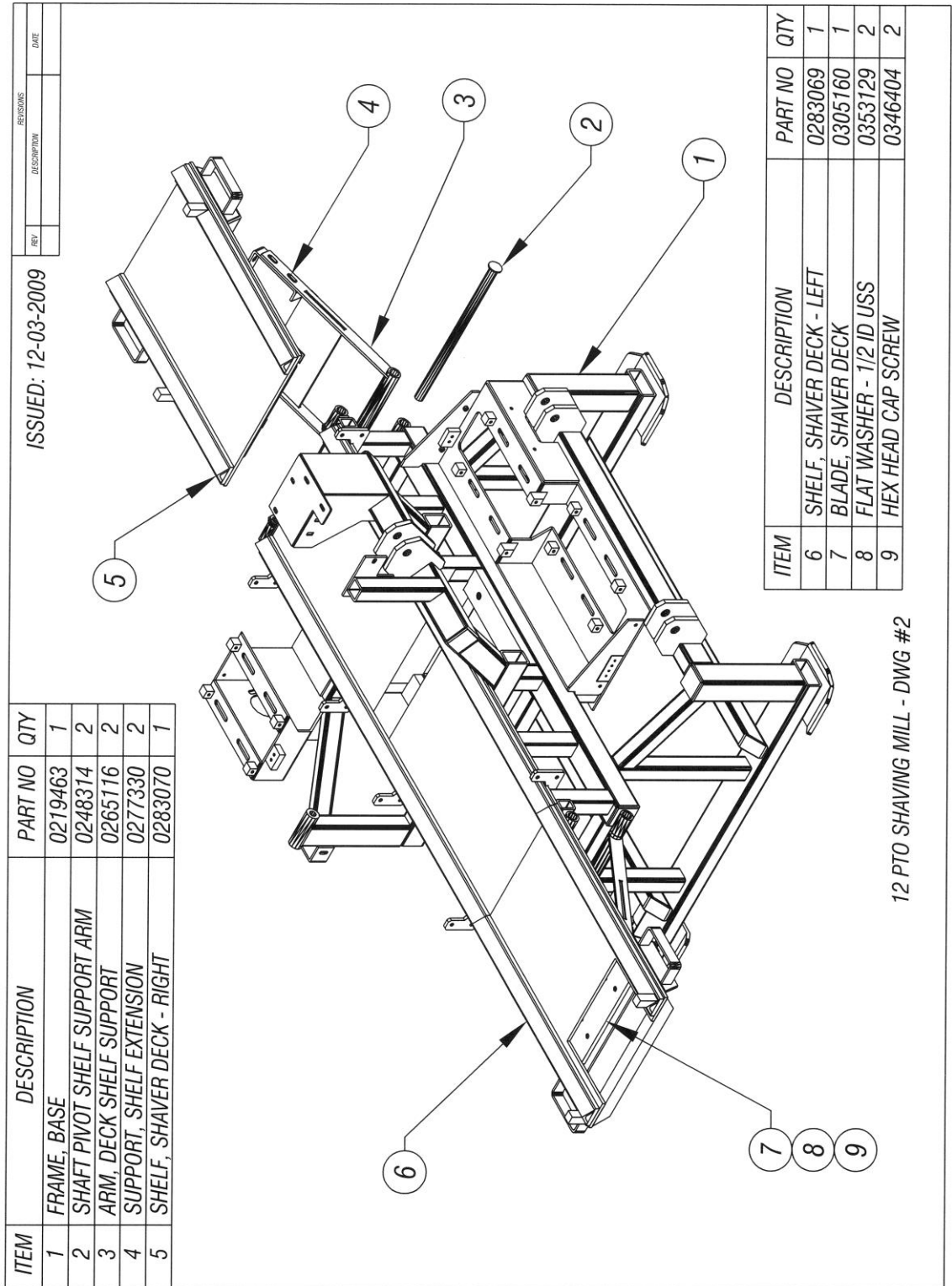
ISSUED: 01-24-2008

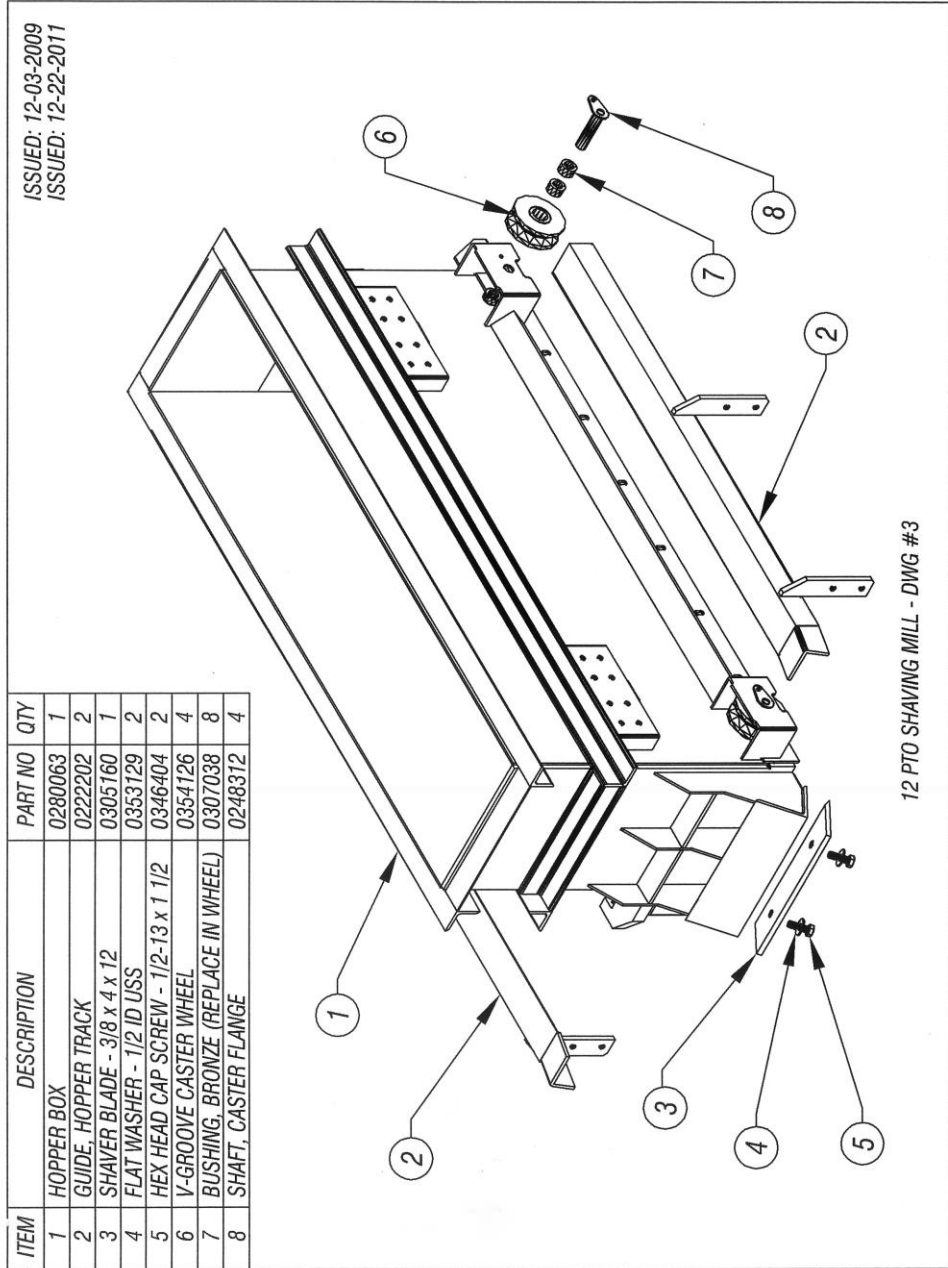


NOTE — DISTANCE *A* MUST BE CONTROLLED FROM CORRIGATION GROOVE (AS SHOWN) AND BE THE SAME ON ALL BLADE KNIVES

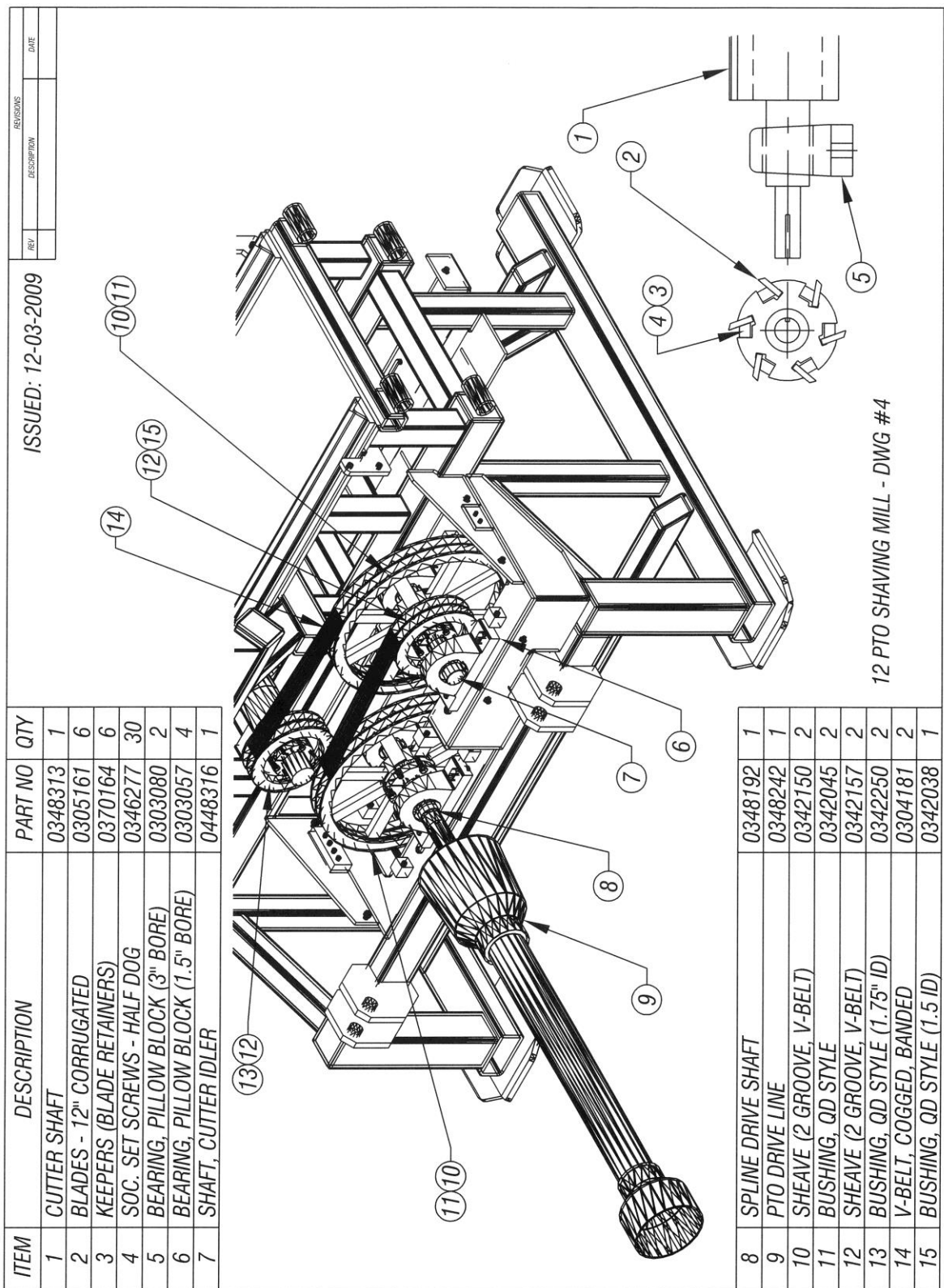
BLADE KNIFE - FOR SALSCO SHAVING MILL











ITEM		DESCRIPTION	PART NO	QTY
1		SPACER, HOPPER DRIVE MOTOR	0449270	1
2		CHAIN, ROLLER - #80 (CUT FROM BULK)	0309066	1
3		HYD DRIVE MOTOR	0330142	1
4		SPROCKET, HOPPER DRIVE	0351198	1
5		BEARING, PILLOW BLOCK - 1 1/2 BORE	0303057	2
6		SPROCKET, - 1 1/2 BORE	0351200	1

7	SHAFT, HOPPER BOX JACK SHAFT	0448317	1
8	SPROCKET, (WELDMENT)	0251196	1
9	CHAIN, ROLLER - #80 (CUT FROM BULK)	0309066	1
10	SPROCKET, - 1" BORE	0351136	1
11	HEX HEAD BOLT - GRD 8	0346637	1
12	FLAT WASHER	0353106	2
13	LOCK NUT, (NYLON INSERT)	0338106	1

ISSUED: 12-03-2009

REV	DESCRIPTION	DATE

12 PTO SHAVING MILL - DWG #5

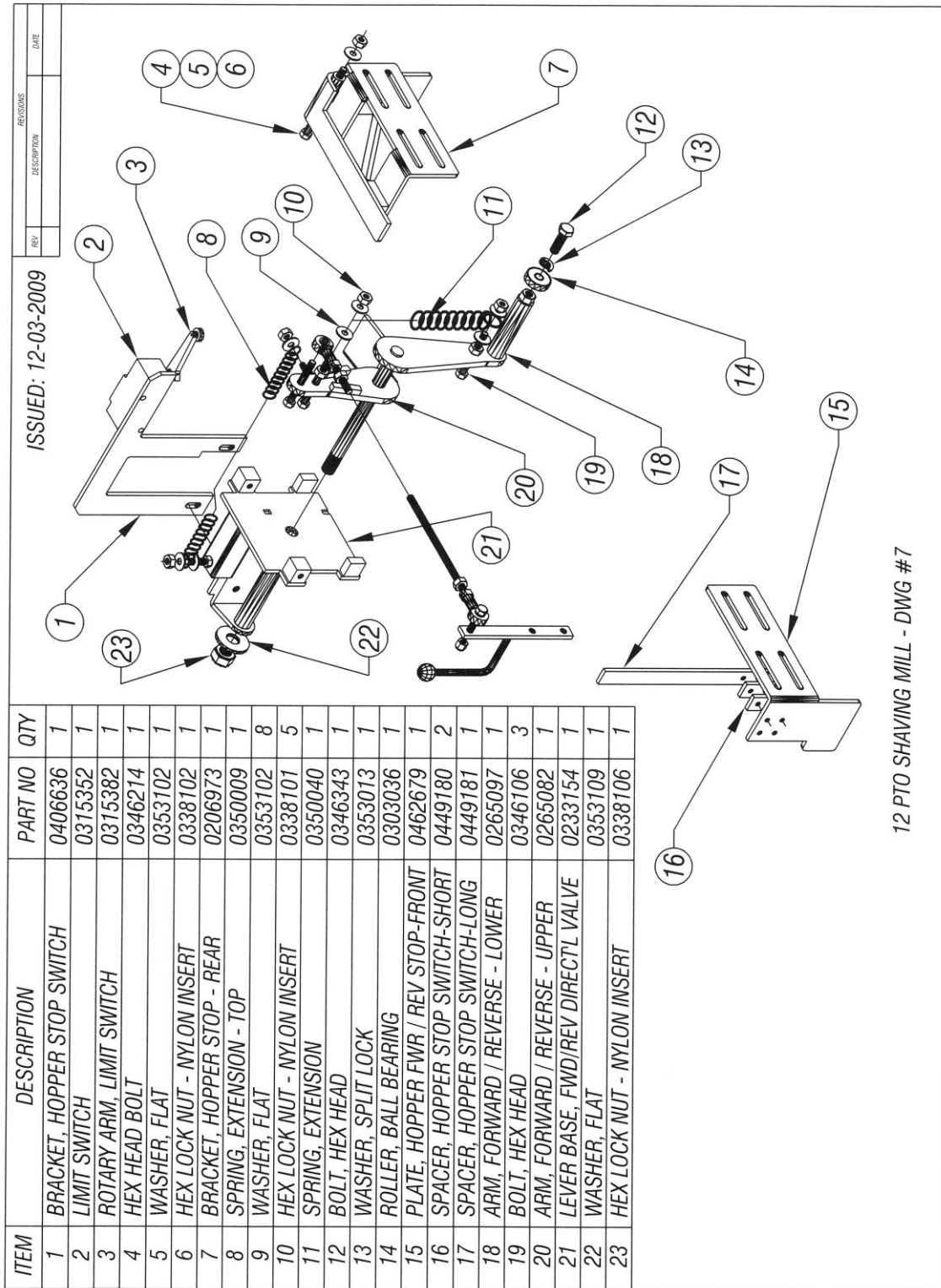
ISSUED: 12-03-2009

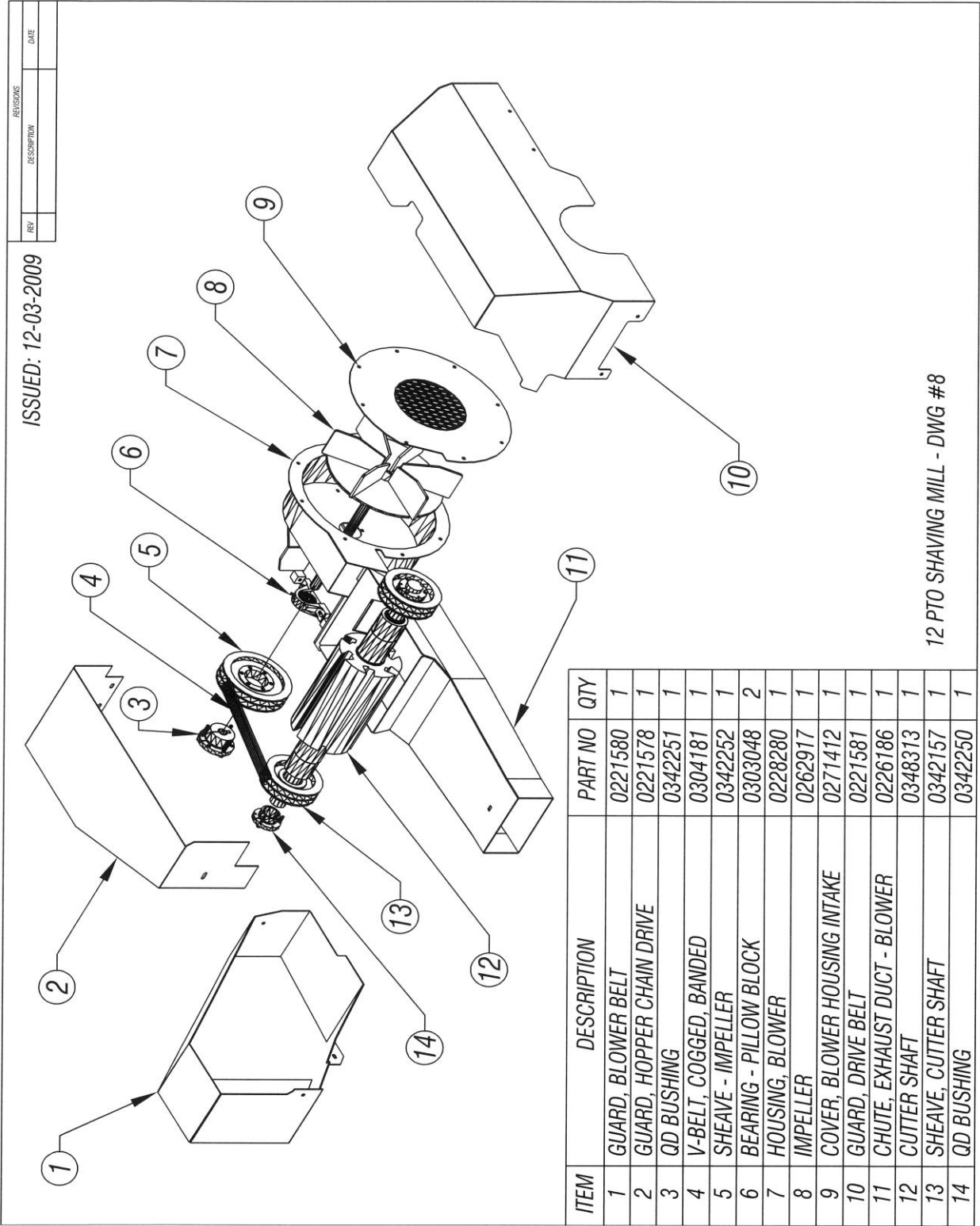
REV	DESCRIPTION	DATE

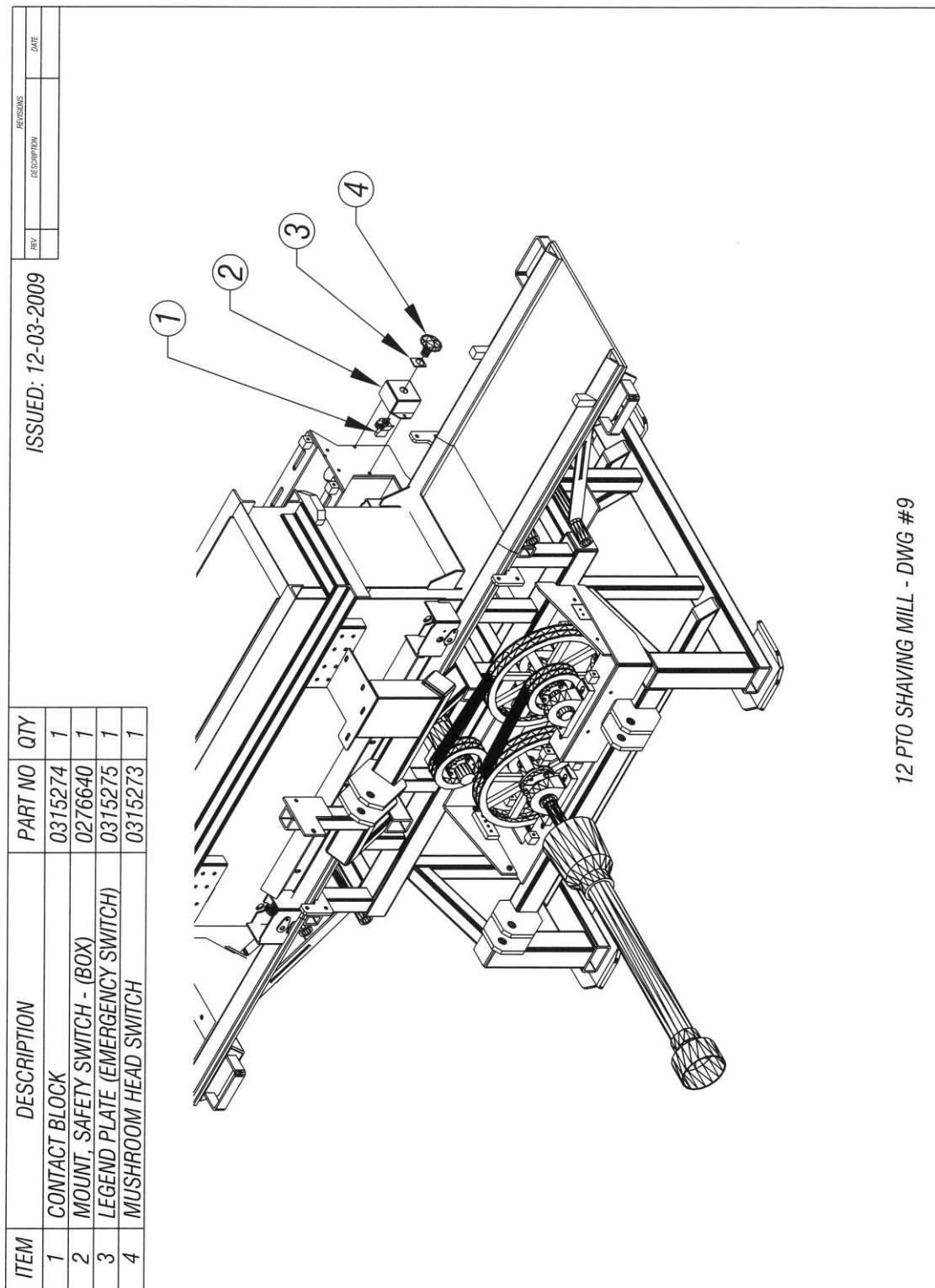
ITEM	DESCRIPTION	PART NO	QTY
1	BRACKET, NEUTRAL SAFETY - LOCKING	0206766	1
2	HEX HEAD BOLT	0346218	1
3	FLAT WASHER	0353102	1
4	HEX LOCK NUT - NYLON INSERT	0338102	1
5	BRACKET, NEUTRAL SAFETY	0206767	1
6	HYD DIRECTIONAL VALVE	0330205	1
7	KNOB, PLASTIC BALL	0332005	1
8	LEVER, FORWARD / REVERSE	0233178	1

9	ROD, FORWARD / REVERSE	0445185	1
10	BALL JOINT ROD END	0303019	2
11	HEX JAM NUT - 3/8-24 FINE THREADS	0338059	2
12	HEX HEAD BOLT	0346251	3
13	HEX LOCK NUT - NYLON INSERT	0338102	3
14	YOKE, FWD / REV VALVE	0274037	1
15	MOUNT, FWD / REV LEVER	0276502	1

12 PTO SHAVING MILL - DWG #6





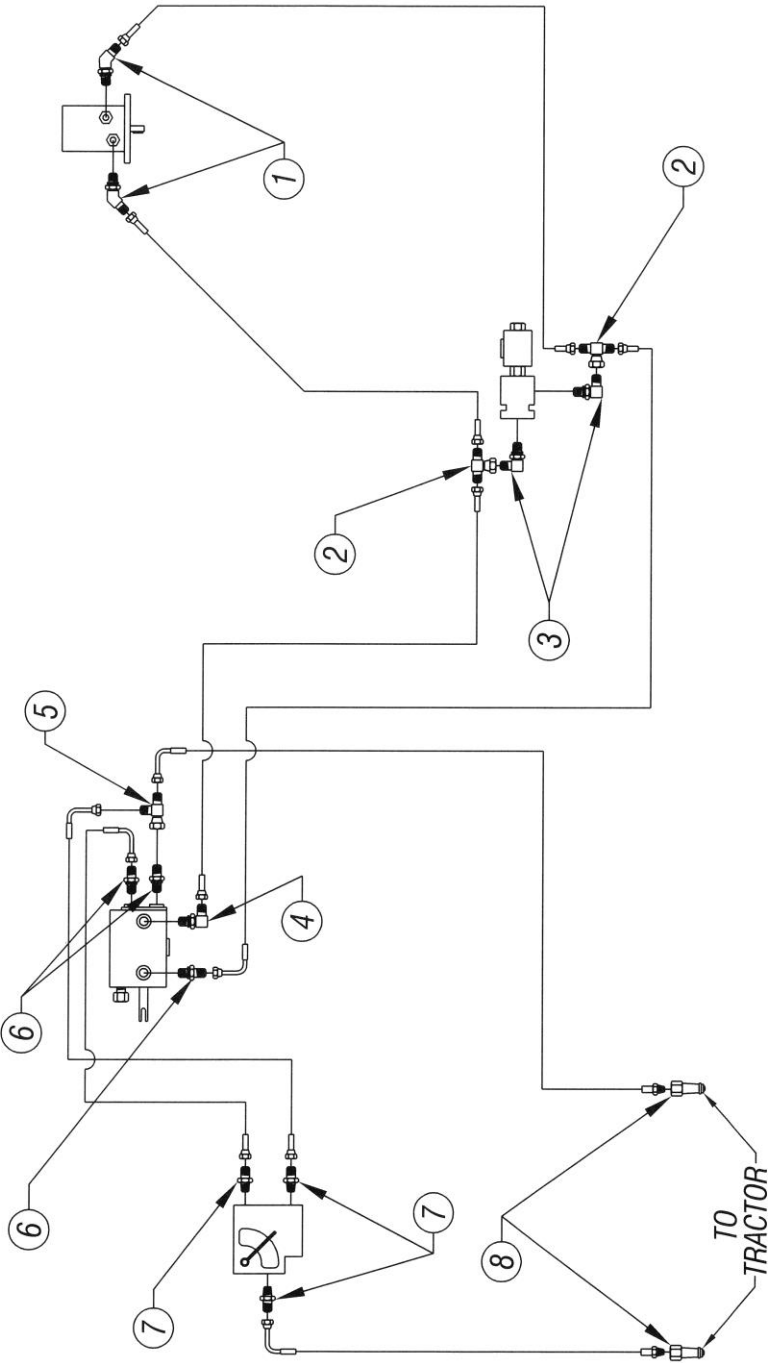




ITEM	DESCRIPTION	PART NO	QTY	ITEM	DESCRIPTION	PART NO	QTY
1	45° ELBOW, 1/2 FL x 5/8 O-RING	0317247	2	6	M. CONC'R, 1/2 FL x 3/8 O-RING	0317066	3
2	SWIVEL TEE, 1/2 FL x 1/2 NUT	0317171	2	7	MALE CONC'R, 1/2 FL x 1/2 MPT	0317054	3
3	90° ELBOW, 1/2 FL x 1/2 O-RING	0317007	2	8	JD QUICK DISCONNECT	0317279	2
4	90° ELBOW, 1/2 FL x 3/8 O-RING	0317064	1				
5	SWIVEL TEE RUN, 1/2 x 1/2 x 1/2	0317118	1				

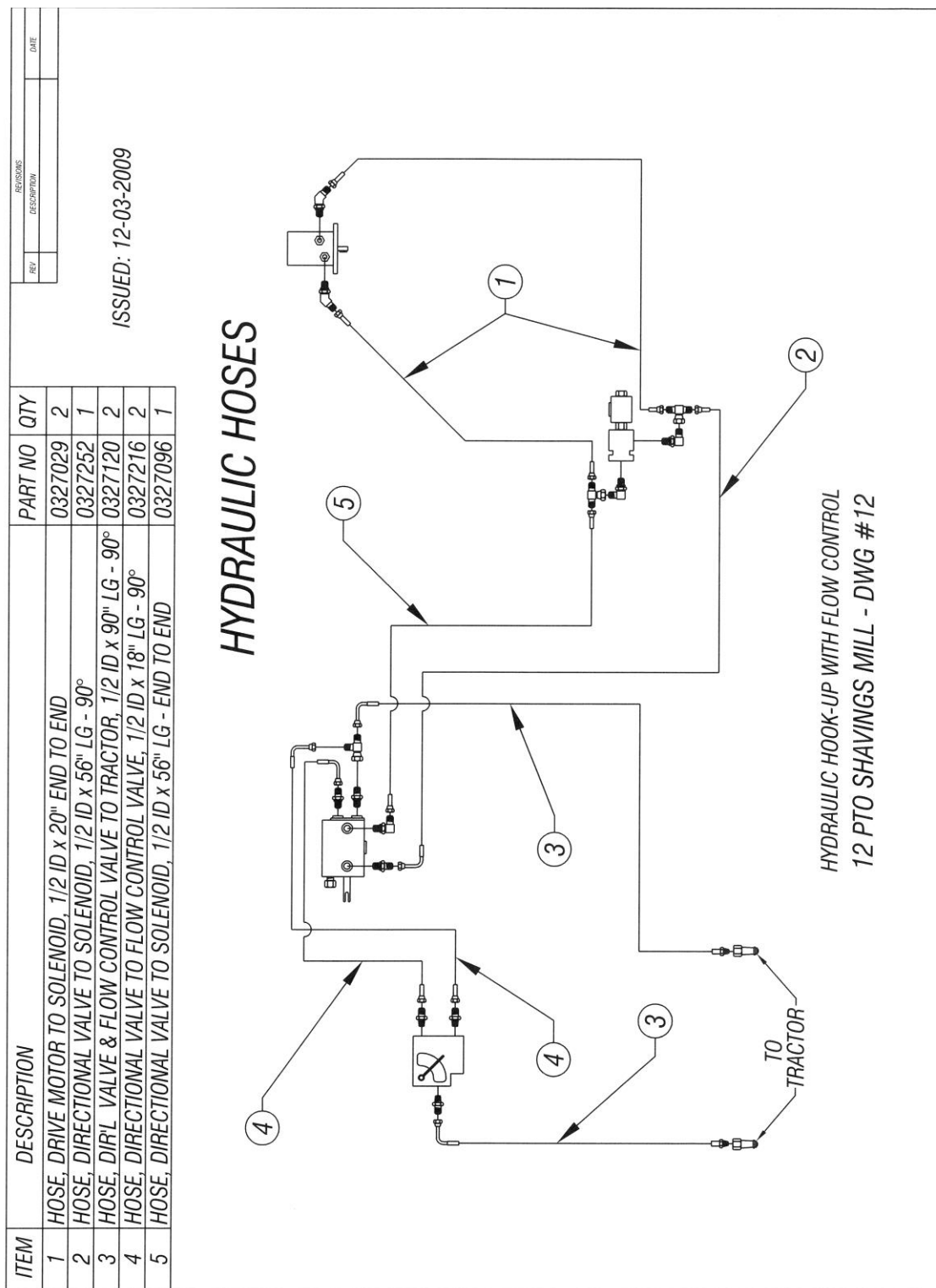
ISSUED: 12-03-2009

# HYDRAULIC FITTINGS



HYDRAULIC HOOK-UP WITH FLOW CONTROL  
12 PTO SHAVING MILL - DWG #11



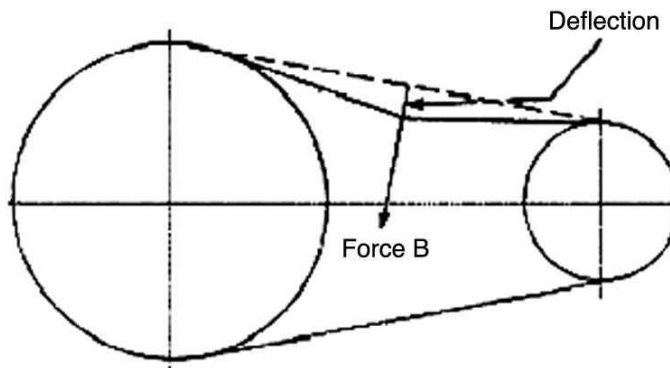


Below is a quick reference chart for various “Flat Head Cap Screws” and the torque recommendations.

**VALUES ARE STATED IN FOOT POUNDS**

BOLT SIZE	Thds Per Inch	SAE Grade 5	SAE Grade 8
1/4	20	10	14
	28	---	---
5/16	18	19	29
	24	---	---
3/8	16	33	47
	24	---	---
7/16	14	54	78
	20	---	---
1/2	13	78	119
	20	---	---
9/16	12	114	169
	18	---	---
5/8	11	154	230
	11	---	---
3/4	10	257	380
	10	---	---
7/8	9	382	600
	9	---	---
1	8	587	700
	8	---	---

Drive Belt Tension Measurement by Deflection



Deflection should be 3/8" when 8-12 lbs. push is applied at "B"

## **WARRANTY POLICY**

*Please remember to complete and return your Warranty Card and Dealer Delivery Report. Warranty Claims will not be considered if the Warranty Card and Dealer Delivery Report have not been returned to Salsco.*

Your Salsco Commercial or Turf Equipment product is a commercial type product and is normally manufactured and sold for commercial or industrial use. **Salsco will, for the original purchaser, for one (1) year from the date of purchase (90 days if used for rental purposes) repair or replace, free of charge, any SALSCO part or parts found to be defective in material, workmanship or both.** Any transportation or shipping charges will be borne by the purchaser. If, during the warranty period stated above, the product does not function properly due to defect, simply contact Salsco and follow the Warranty Procedures included in this manual.

This warranty **does not** include:

- Incidental or consequential damages and is exclusive of any implied warranties.
- Normal maintenance parts, including, but not limited to hoses, chains, belts, filters, lubricants, etc.
- Parts or components, which are covered under the original manufacturer warranty, including, but not limited to engines, pumps, and motors.

## **WARRANTY PROCEDURE**

In order for Salsco to consider your warranty claims in a timely manner you must follow the simple procedures listed below:

### **MACHINE OR PART FAILURE**

- Call our service department for helpful instruction on how to correct or repair the problem. Preventive maintenance will also be suggested.
- When ordering parts for Warranty issues, you **MUST** retain possession of the old parts in question until notified with respect to returning the parts to Salsco or other disposition.
- Warranty Claims **MUST** be filed within 30-days from completion of the work performed. Contact our office for an electronic warranty claim form.
- Fill in all information requested on warranty claim form, a copy of which is included in this manual, (date of purchase, company name, address, etc.). List all parts used. Make sure part numbers are correct. You can obtain these from your manual. (include good description of problem; i.e. "leaking from spool" rather than "leaking").
- It is our goal to consider and reach a disposition on each Warranty Claim within 30-days from the date that it is received. Therefore it is important that you respond promptly to any request for further information. Claims with no response to inquiries will be closed as "**denied for lack of response**" 90-days from the date of request.
- Email, Fax or Send Warranty Claim form to our Warranty Department. – **Warranty on parts most often requires return of the parts that were replaced.** DO NOT DISCARD OLD PARTS UNTIL YOU HAVE RECEIVED A DETERMINATION AS TO WHETHER THESE PARTS MUST BE RETURNED.
- Our Warranty Department will contact and instruct you on how to return the Parts to Salsco on an RA #. Returns **MUST** be made within 30-Days from issuance of RA #. **FREIGHT CHARGES ON RETURN OF PARTS IS THE RESPONSIBILITY OF THE CUSTOMER.** Normal pre-delivery adjustments are not covered under warranty. Labor Warranties are based on reasonable time allowances as determined by Salsco, Inc. and paid at 75% of posted labor rate. **TRAVEL TIME IS NOT REIMBURSED UNDER THE WARRANTY POLICY.**
- Be sure to put the RA form inside the box that you are shipping back, also be sure to put on the outside of the box "Return of Goods" and the RA #.
- Ship returns via a traceable method such as UPS Ground Service. Be sure that the shipment is insured for the appropriate value. If uninsured parts are lost, we cannot issue a credit.

**PLEASE NOTE:**      *Warranty forms should be filled out completely.*

**PREVENTIVE MAINTENANCE IS YOUR BEST INSURANCE AGAINST EQUIPMENT FAILURE. BE SURE TO READ THIS MANUAL, ESPECIALLY THE MAINTENANCE, OPERATING AND CAUTION SECTIONS.**

SALSCO, INC., 105 School House Rd.  
Cheshire, CT 06410  
800-872-5726, 203-271-1682  
203-271-2596 (Fax)  
sales@salsco.com, [www.salsco.com](http://www.salsco.com)

**WARRANTY CLAIM FORM**

Salsco, Inc.  
105 School House Road  
Cheshire, CT 06410

Phone: (203) 271-1682, (800)872-5726  
Fax: (203) 651-0072  
sales@salsco.com  
www.salsco.com

END OWNER (PLEASE TYPE OR PRINT CLEARLY)

DATE SUBMITTED:

Warranty Claim #:

Name:	Phone:
E-mail:	Fax:
Address:	

WORK ORDER#:
<i>Office Use Only</i>
Date Received:
Customer ID:
Salsco W/C #:
Salsco RA #:
Date Approved:
Date Rejected:
Processed By:
Dir. Del. Report on File:
Warranty Card on File:
Part(s) Total:
Labor Total:
Total Approved:
Approved/Rejected By:
Name:
Reason for Rejection:
Suggested Preventive Maint:

**PURCHASED FROM**

Name:	Phone:
E-mail:	Fax:
Address:	

**EQUIP/WARRANTY INFORMATION: (Must be complete)**

Purchase Date:	Invoice #:	Date Failed:
Model #:	Serial #:	
Hrs Used:	Primary Use:	
Warranty Claim/Work Order #:		
Was a Salsco Return Authorization # issued for repair parts or		
Return of parts?	YES	NO If Yes RA #
Probable Cause of Failure: (The word defective is not sufficient)		

**Work Performed/Comments on Repair:**


Shop Labor Rate:

SUBMITTED BY:

Total Labor Hours to Repair:

PRINTED NAME:

**PARTS REQUIRED FOR REPAIR**

SALSCO PART# -Description	Qty.	Price Ea.	Total	Inv. #
			\$ -	
			\$ -	
			\$ -	
			\$ -	
			\$ -	

Fill in all information requested on warranty claim form.

**INCOMPLETE FORMS CANNOT BE PROCESSED & WILL BE RETURNED**

List all parts used. Make sure part numbers are correct. Any parts that you believe to be defective or any parts that break should be retained for possible inspection until after the warranty has been paid or part has been replaced.

REV 04/06

Manuals/WARRANTY CLAIM FORM

SALESMAN ID # \_\_\_\_\_

SALES MANAGER'S NAME \_\_\_\_\_

800-872-5726, 203-271-1682  
203-271-2596 (Fax)**SALSCO, INC.**  
105 School House Road  
Cheshire, CT 06410**www.salsco.com**  
sales@salsco.com**DEALER DELIVERY REPORT**

MODEL: _____		SERIAL NO: _____	
DEALER: _____	CITY: _____	STATE: _____	ZIP: _____
PURCHASER: _____	ADDRESS: _____	CITY: _____	ST: _____ ZIP: _____
<p>The undersigned dealer warrants that the above-described machine was carefully inspected, adjusted and prepared for delivery before delivery to the purchaser; that both the operation and maintenance of the machine were explained to the purchaser; and that a copy of the Owner's instruction Manual were given to the purchaser and his attention called to Our Warranty and any operating instructions included in the manual and caution notes.</p>		<p>The undersigned purchaser certifies that the operation and maintenance of the above-described machine have been explained to him; acknowledges receipt of a copy of the Owner's Instruction Manual and Our Warranty Policy printed in said Instruction Manual and Caution Notes. I also understand that it is my responsibility to explain and make Salsco manuals available to new operators.</p>	
DATE: _____		DATE: _____ PURCHASER: _____	
SIGN BY: _____		SIGN BY: _____	
PHONE: _____ FAX: _____		PHONE: _____	
E-Mail _____		EMAIL: _____	

MODEL: _____		SERIAL NO: _____	
<b><u>SALSCO LIMITED WARRANTY CARD</u></b>			
DATE PURCHASED: _____			
PURCHASER: _____	ADDRESS: _____	CITY: _____	ST: _____ ZIP: _____
EMAIL: _____		PHONE: _____	
DEALER: _____		STATE: CT	
Will this equipment be used commercially?		Yes <input type="checkbox"/>	No <input type="checkbox"/>
Did Dealer service this equipment and instruct you in its care and safe operation?		Yes <input type="checkbox"/>	No <input type="checkbox"/>
Did you receive an "Operation & Service Manual" and safety pamphlet?		Yes <input type="checkbox"/>	No <input type="checkbox"/>
Signed _____		Purchaser _____	
<p><b><u>NOTICE:</u></b> IMPORTANT: THIS CARD MUST BE FILLED OUT COMPLETELY AND MAILED TO THE FACTORY WITHIN 10 DAYS OF PURCHASE DATE, OR YOUR LIMITED WARRANTY WILL BE VOIDED.</p>			

## SERVICE RECORD

If kept properly, this schedule will help track problems in the future.

[illegible]

MODEL # \_\_\_\_\_ S/N \_\_\_\_\_

DATE PURCHASED: \_\_\_\_\_