

TABLE OF CONTENTS

MODEL 09046 - POWER DRIVER & 09043 - BED DEFINER

STATEMENT OF FACT	Page 1
MACHINE REGISTRATION	Page 2
SAFETY & OPERATING INSTRUCTIONS	Page 3
COPIES OF DECALS	Page 4
SERVICE & MAINTENANCE INSTRUCTIONS	Page 5
PARTS DIAGRAMS	Pages 6 - 8
WARRANTY POLICY/PROCEDURE	Page 9
COPIES OF WARRANTY CLAIM & DEALER DELIVERY REPORT	Pages 10 - 11
SERVICE SCHEDULE LOG	Page 12

12/99

SALSCO, INC.

105 School House Rd., Cheshire, CT 06410

800-872-5726, 203-271-1682, 203-271-2596(Fax)

salscoinc@AOL.com, www.salsco.com

STATEMENT OF FACT

You have just purchased the highest quality, most dependable, Bed Definer with Power Driver on the market today. This unit has the ability to meet exact standards and perform for years with minimum downtime. HOWEVER, it cannot read nor will it understand this manual no matter how long you leave it on top of the machine.

It is your responsibility to read and understand this manual; it is also your responsibility to be certain this information is passed along to anyone who is expected to operate this equipment. Should you choose not to read, understand and pass along the information provided you, please expect equipment failure and possible injuries to persons around this equipment.

For the safety of the operator, it is **imperative** that this manual is carefully read and understood.

Once you have read this manual, it is your responsibility to be sure that all new operators read and understand this manual, especially all cautions stated.

As a manufacturer of equipment, we have a responsibility to design a safe piece of equipment. NOTE: The important safeguards and instructions in this manual are not meant to cover all possible conditions and situations that may occur. It must be understood that common sense, caution, and care are factors, which cannot be built into any product. These factors must be supplied by the person(s) caring for and operating this equipment.

ONLY YOU CAN PREVENT ACCIDENTS!!

MACHINE REGISTRATION

MANUFACTURED BY:

SALSCO, INC.

105 School House Rd., Cheshire, CT 06410
800-872-5726, 203-271-1682, 203-271-2596 (Fax)
salscoinc@AOL.com www.salsco.com

THIS MANUAL COVERS MODEL (s): 09046 Power Driver & 09043 Bed Definer Attachment

This company reserves the right to discontinue, add improvements to, or change the design of any model or product at any time without obligation to improve existing machines, either by changing the design or adding new parts.

It has been and will continue to be the policy of SALSCO to update existing machines at its own discretion. Whenever possible, new designs will be made in such a way that they can be "Retro Fit" if so desired.

Record in the space provided below the model and serial number of this unit. Please retain these numbers for future reference.

No parts orders will be accepted **WITHOUT MODEL NUMBERS OR PART NUMBERS**. All part numbers are listed in this manual.

Serial Number

Model Number

NOTE: Be sure to complete your warranty card. This will insure immediate processing of any warranty claims.

READ AND UNDERSTAND THIS MANUAL BEFORE STARTING MACHINE

SAFETY INSTRUCTIONS

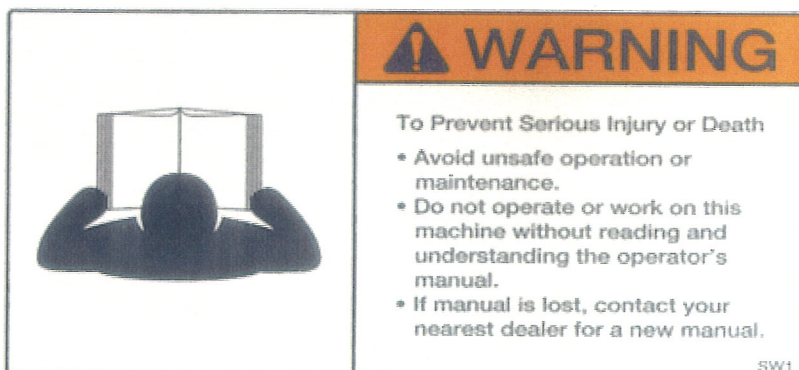
- 1) **DO NOT** run with out all guards in place;
- 2) **DO NOT** reach in, or under this machine while the unit is running;
- 3) **DO NOT** allow anyone to operate this unit who is under age, or has not been properly instructed in the operation of this machine.

OPERATING INSTRUCTIONS - BED DEFINER

- 1) Check all oil levels
- 2) Be sure the cutter head is raised and not in contact with the ground;
- 3) The cutter arm can be either in a straight or angled position, depending on the type of work and cutter to be used;
- 4) Be sure your feet and hands are clear of the cutter head;
- 5) Stand at the handle bars, push the throttle cable to full throttle;
- 6) Be sure the implement handle is in the off position;
- 7) Go to the right side of the unit and pull the start rope;
- 8) Once the engine starts, lower the throttle and allow the engine to warm up;
- 9) Squeeze the forward/reverse lever and the machine will begin to move. Raise the R.P.M. if necessary;
- 10) Drive the machine to the location where the work is to be done. Position the machine so that when the cutter is lowered, the trench will be where you want it;
- 11) Be sure there is no one near the machine;
- 12) Engage the implement handle slowly, raise the throttle to full R.P.M., hold the handles and lower the raise/lower handle slowly. The machine will begin to cut into the ground as you lower the cutter head;
- 13) Now, with the cutter head lowered, the R.P.M. full, and the cutter engaged, squeeze the forward control handle easily and the machine will begin to move forward, cutting a trench as it goes;
- 14) Slowly steer the machine so as to get the trench where you want it;
- 15) When you have finished, put the implement engage handle into neutral, raise the raise/lower handle, lower the R.P.M.;
- 16) Drive the machine to the next job;

CAUTION

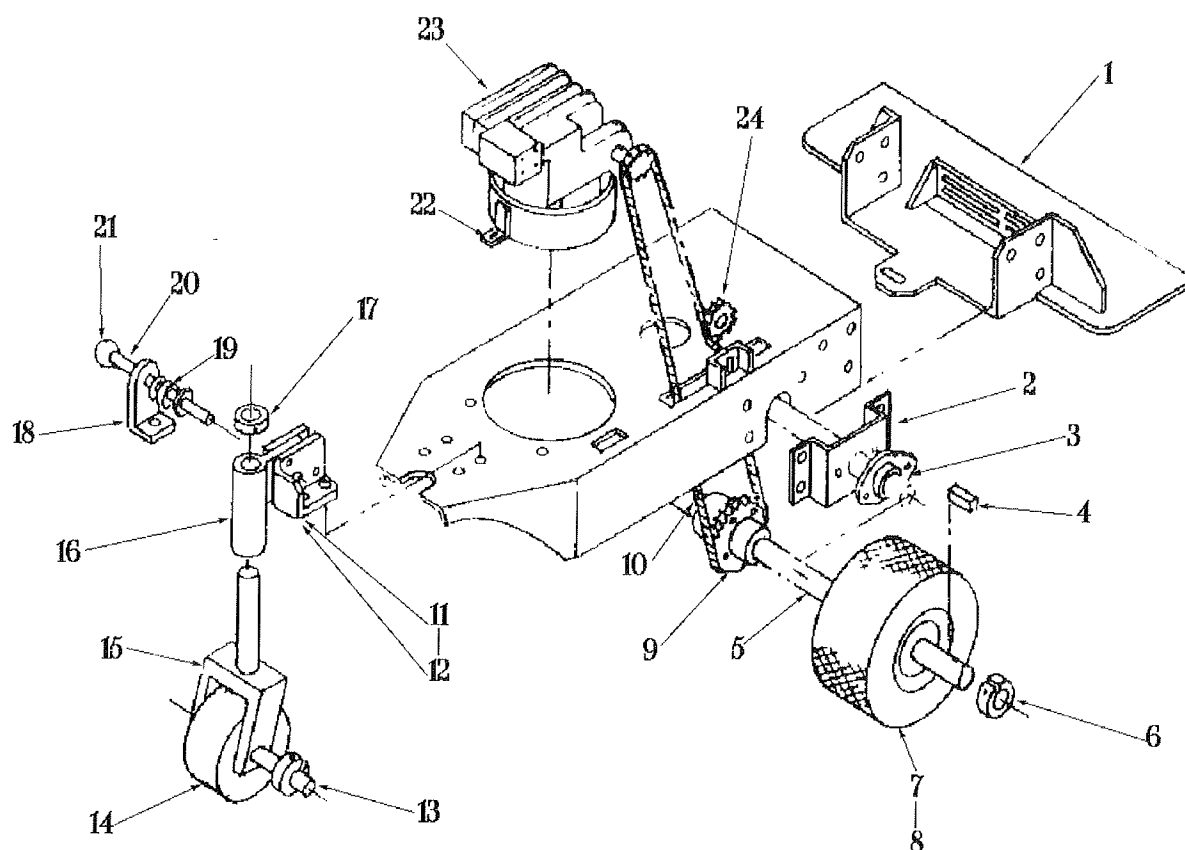
**DO NOT OPERATE
THIS MACHINE WITHOUT
COVERS IN PLACE**



SERVICE & MAINTENANCE

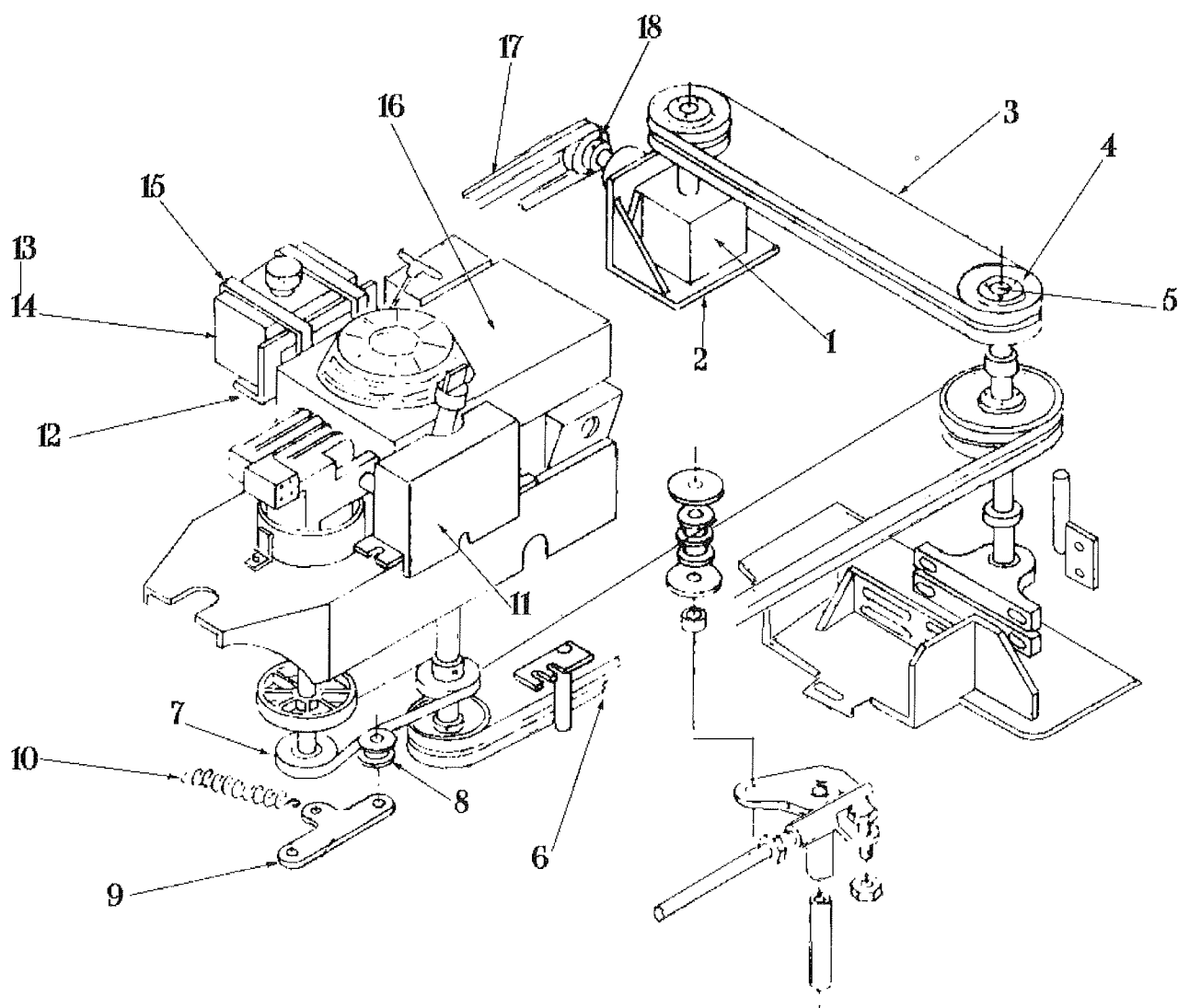
- 1) Check engine manual and service accordingly
- 2) Grease all grease fitting once a day
- 3) Check all nuts and bolts daily;
- 4) Check the cutter blades or the engaging bits to be sure they are sharpened in good working order
- 5) Check the air in the tires once a week.

MULTI - DRIVER DECK ASSEMBLY - MODEL 0009046



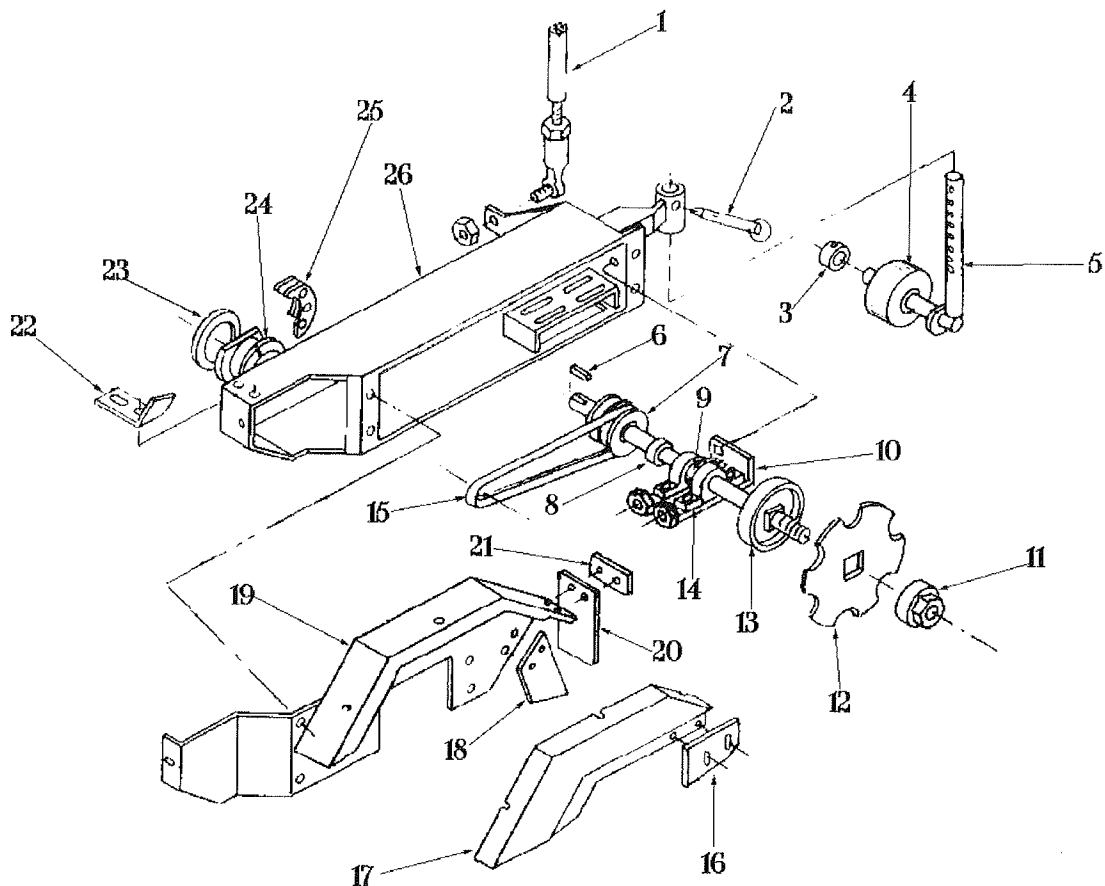
ITEM #	DESCRIPTION	PART # & QTY.
1	ADAPTER, "OUTLINER"	0275038 - 1
2	BRACKET, WHEEL ASSY.	0206484 - 2
3	BEARING, 2-BOLT FLANGE	0303052 - 2
4	KEY	0431016 - 2
5	SHAFT, DIFFERENTIAL	0337178 - 1
6	COLLAR, SINGLE SPLIT	0311001 - 4
7	WHEEL/TIRE ASSY.	0354053 - 2
8	(OPTIONAL WHEEL/TIRE ASSY.)	
	TIRE ONLY	0354055 - 2
	RIM ONLY	0254056 - 2
	VALVE STEM	0354057 - 2
9	SPROCKET, DIFFERENTIAL	0451074 - 1
10	CHAIN, ROLLER, 39" LONG	0309045 - 1
11	BRACKET, PIVOT REAR WHEEL, RIGHT	0206474 - 1
12	BRACKET, PIVOT REAR WHEEL, LEFT	0206473 - 1
13	SHAFT, PIVOT WHEEL	0448053 - 1
14	WHEEL/TIRE, ASSY.	0354008 - 1
15	BRACKET, PIVOT WHEEL	0206192 - 1
16	MOUNT, REAR AXLE	0176308 - 1
17	COLLAR, SET	0311006 - 1
18	BRACKET, AXLE SPRING	0406470 - 1
19	SPRING, COMPRESSION	0350030 - 2
20	PULL PIN, REAR WHEEL	0240073 - 1
21	KNOB, ROUND, BLACK	0332005 - 2
22	GUARD, HYDROSTATIC DRIVE FAN	0421211 - 1
23	HYDROSTATIC DRIVE	0337177 - 1
24	SPROCKET, IDLER	0351011 - 1

MULTI-DRIVER WITH "OUTLINER" ASSEMBLY



ITEM #	DESCRIPTION	PART # & QTY.
1	GEAR BOX	0363003 - 1
2	MOUNT, GEAR BOX	0276302 - 1
3	V-BELT, GEAR BOX TO IDLER	0304067 - 2
4	PULLEY, GEAR BOX & IDELR	0342103 - 2
5	QD BUSHING	1
6	V-BELT, ENGINE TO IDLER	0304003 - 2
7	V-BELT, ENGINE TO HYDROSTATIC DRIVE	0304056 - 1
8	IDLER PULLEY	0342008 - 3
9	LEVER, ARM TENSIONER	0433092 - 1
10	SPRING, EXTENSION	0350033 - 1
11	GUARD, IDLER CHAIN	0221210 - 1
12	MOUNT, FUEL TANK	0276301 1
13	FUEL TANK SHUT OFF	0337181 - 1
14	FUEL TANK	0337179 - 1
15	STRAP, FUEL TANK	0337180 - 2
16	ENGINE, 13 HP HONDA	0337182 - 1
17	V-BELT, GEAR BOX TO DISC	0304068 - 2
18	PULLEY, GEAR BOX	0342102 - 1

CUTTER ARM ASSEMBLY - MODEL 0009043, "OUTLINER"



ITEM #	DESCRIPTION	PART # & QTY.
1	ROD, DISC LIFT	0145102 - 1
2	PIN, RING GRIP	0340072 - 1
3	COLLAR, SET	0311006 - 1
4	WHEEL, 4"	0354051 - 1
5	AXLE, 4" WHEEL	0202058 - 1
6	KEY, DISC SHAFT	0331004 - 1
7	PULLEY, DOUBLE	0342100 - 1
8	SPACER, REAR	0449115 - 1
9	SPACER, FRONT	0449114 - 1
10	ARM, BEARING PUSHER PLATE	0265062 - 1
11	SPACER, DISC LCK	0249107 - 1
12	DISC, STANDARD	0336092 - 1
13	SHAFT, DISC DRIVE	0248119 - 1
14	BEARING, PILLOW BLOCK	0303047 - 2
15	V-BELT, GEAR BOX TO DISC	0304068 - 2
16	BLADE, SCRAPER	0405077 - 1
17	GUARD COVER	0405077 - 1
18	MUD FLAP, SIDE	0416027 - 1
19	GUARD, DISC	0221208 - 1
20	MUD FLAP, REAR	0416026 - 1
21	MOUNT, MUD FLAP	0476297 - 2
22	DISC GUIDE	0422085 - 1
23	BEARING, RING	0403049 - 1
24	BEARING, RING, SPLIT	0403050 - 1
25	FLANGE, RETAINER	0266062 - 2
26	COVER, ARM DISC	0265063 - 1

WARRANTY POLICY

Your Salsco Commercial or Turf Equipment product is a commercial type product and is normally manufactured and sold for commercial or industrial use. **Salsco will, for the original purchaser, for one (1) year from the date of purchase (90 days if used for rental purposes) repair or replace, free of charge, any part or parts found to be defective in material, workmanship or both.** Any transportation or shipping charges will be borne by the purchaser. If, during the warranty period stated above, the product does not function properly due to defect, simply contact Salsco and follow the Warranty Procedures included in this manual.

This warranty **does not** include incidental or consequential damages and is exclusive of any implied warranties.

This warranty **does not** cover normal maintenance parts, including, but not limited to hoses, chains, belts, filters, lubricants, etc.

This warranty **does not** include parts or components, which are covered under the original manufacturer warranty, including, but not limited to engines, pumps, and motors.

WARRANTY PROCEDURE

In order for Salsco to process your warranty claims in a timely manner you must follow the simple procedures listed below:

MACHINE OR PART FAILURE

- a) Call our service department for helpful instruction on how to correct or repair the problem. Preventive maintenance will also be suggested.
- b) Fill in all information requested on warranty claim form, a copy of which is included in this manual, (date of purchase, company name, address, etc.).
- c) List all parts used. Make sure part numbers are correct. You can obtain these from your manual. Any parts that you believe to be defective or any parts that break should be retained for possible inspection until after the warranty has been paid or part has been replaced.

PLEASE NOTE: *Warranty Claims will not be processed if Warranty Cards and Dealer Delivery Reports have not been returned to Salsco*

PREVENTIVE MAINTENANCE IS YOUR BEST INSURANCE AGAINST EQUIPMENT FAILURE. BE SURE TO READ THIS MANUAL, ESPECIALLY THE MAINTENANCE, OPERATING AND CAUTION SECTIONS.

**SALSCO, INC., 105 School House Rd., Cheshire, CT 06410
800-872-5726, 203-271-1682, 203-271-2596 (Fax)
salscoinc@AOL.com, www.salsco.com**

12/99

Salsco, Inc.

105 School House Rd.

Cheshire, CT 06410

203-271-1682

DEALER DELIVERY REPORT

			SERIAL NO.	
DEALER		CITY	STATE	ZIP
PURCHASER (Last Name or Company) (First Name) (Middle Name)		ADDRESS	CITY	STATE ZIP

The undersigned dealer warrants that the above-described machine was carefully inspected, adjusted and prepared for delivery before delivery to the purchaser; that both the operation and maintenance of the machine were explained to the purchaser; and that a copy of the Owner's Instruction Manual were given to the purchaser and his attention called to Our Warranty and any operating instructions included in the manual and caution notes.

Date

Dealer

Sign By

Phone

The undersigned purchaser certifies that the operation and maintenance of the above-described machine have been explained to him; acknowledges receipt of a copy of the Owner's Instruction Manual and Our Warranty Policy printed in said Instruction Manual and Caution Notes. I also understand that it is my responsibility to explain and make Salsco manuals available to new operators.

Date

Purchaser

Sign By

Phone

FACTORY COPY WHITE - DEALER'S COPY YELLOW - OWNER'S COPY PINK

FORM NO. 8204

MODEL -	SERIAL NO.
SALSCO LIMITED WARRANTY CARD	
1. DATE PURCHASED: _____	
2. PURCHASER: _____	
3. PURCHASER ADDRESS: _____	
4. DEALER: _____	
5. DEALER ADDRESS: _____	
6. WILL THIS EQUIPMENT BE USED COMMERCIALY? <input type="checkbox"/> YES <input type="checkbox"/> NO	
7. DID DEALER SERVICE THIS EQUIPMENT AND INSTRUCT YOU IN ITS CARE AND SAFE OPERATION? <input type="checkbox"/> YES <input type="checkbox"/> NO	
8. DID YOU RECEIVE AN "OPERATION & SERVICE MANUAL" AND SAFETY PAMPHLET? <input type="checkbox"/> YES <input type="checkbox"/> NO	

NOTICE

SIGNED _____

Purchaser

IMPORTANT: THIS CARD MUST BE FILLED OUT COMPLETELY AND MAILED TO THE FACTORY WITHIN 10 DAYS OF PURCHASE DATE, OR YOUR LIMITED WARRANTY WILL BE VOIDED.

WHITE—DEALER

YELLOW—OWNER

CARD—FACTORY

WARRANTY CLAIM

Salsco, Inc.
105 School House Road
Cheshire, CT 06410

Phone: (203) 271-1682, (800)872-5726
Fax: (203) 271-2596
salscoinc@aol.com, www.salsco.com

END OWNER**DATE SUBMITTED:**

Name:	Phone:
E-mail:	Other:
Address:	

Office Use Only

Date Received:
Date Approved:
Date Rejected:
Processed By:
Entered A/R:
Dir. Del. Report on File:
Warranty Card on File:

PURCHASED FROM

Name:	Phone:
E-mail:	Other:
Address:	

Part(s) Total:
Labor Total:
Total Approved:

Comments on Repair:

EQUIP/WARRANTY INFORMATION: (Must be complete)

Purchase Date:	Invoice #:	Date Failed:
Model #:	Serial #:	
Hrs Used:	Primary Use:	
Probable Cause of Failure: (The word defective is not sufficient)		

Work Performed/Comments on Repair:

Parts Required for Repair

Part # and Description	Qty.	Price Ea	Price Tot.

Total Labor Hours to Repair: **Shop Labor Rate:****Preventive Maintenance Suggested and by Whom:****Approved/Rejected By:**

Name:
Title:
Reason for Rejection:

By:

Dec-99

SERVICE RECORD

If kept properly, this schedule will help track problems in the future.

[illegible]

MODEL # _____ S/N _____

DATE PURCHASED: _____